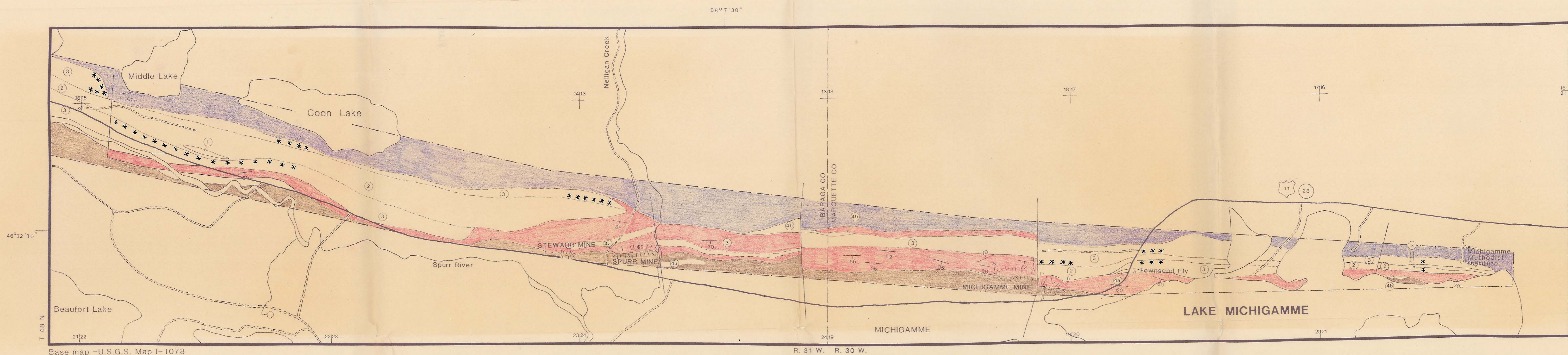


PLATE 1: GEOLOGIC MAP OF THE STUDY AREA, LAKE MICHIGAMME AREA, MARQUETTE AND BARAGA COUNTIES, NORTHERN MICHIGAN

SCALE 1:12000



Base map - U.S.G.S. Map I-1078

R. 31 W. R. 30 W.

SYMBOLS

- Fault
- Diamond Drill Hole, Inclined
- CONTACT - dashed where approximately located, short dashed where inferred
- Roadside Park
- Margin of surface mine
- 4-section Intersection (Nos. designate section)
- Strike and dip
- U.S. Hwy - State Hwy
- Secondary road
- Boundary of study

Strike and dip data, and faults are from Klasner and Cannon (1978).
The metadiabase is divided into 4 zones on the basis of petrography of samples from known locations (see Plate 2 - Sample location maps).

Klasner, J.S. and Cannon, W.F. 1978. Bedrock Geologic map of the southern part of the Michigamme and Three Lakes quadrangles, Marquette and Baraga Counties, Michigan. USGS Map I-1078

EARLY PROTEROZOIC (PRECAMBRIAN X)

- Metadiabase
 - Zone 4: Biotite Schist
 - Chlorite Schist
 - Zone 3: Chlorite-Hornblende-Garnet Metadiabase
 - B: without relict poikilitic texture
 - A: with relict poikilitic texture
 - Zone 2: Hornblende Metadiabase
 - Zone 1: Plagioclase-Clinopyroxene Metadiabase
- Goodrich Quartzite
- Negaunee Iron-Formation
- Siamo Slate

- 4b
- 4a
- 3
- 3A
- 2
- 1
- Goodrich Quartzite
- Negaunee Iron-Formation
- Siamo Slate

East boundary - Section 21