

2019



610  
103.9 **KDAL**  
NEWS · WEATHER · SPORTS

**BULLDOG  
COUNTRY**



## GREG CANE HEAD COACH

Few collegiate coaches in any sport can claim to have literally built his or her squad from the ground up, but UMD head coach Greg Cane has been there for every single step of the Bulldogs' transition from club-level to a perennial contender in the Northern Sun Intercollegiate Conference and, in 2013, one of the top teams in all of NCAA Division II, finishing the year ranked seventh by the National Soccer Coaches Association of America. Cane officially became the first head soccer coach in Bulldog history in 1994, and has paced the sideline for each of the team's 464 matches during the program's 25-year existence. During that time, the Duluth native has

won at a .611 clip, piling up an overall record of 258-160-46. The longevity has him not only as one of the top coaches in the NSIC, but also as one of the most successful coaches in the nation. With 273 collegiate victories under his belt, Cane sits 11th in most wins among NCAA Division II coaches entering his 26th season. His latest grand achievement came in 2017 when he notched his 250th win at UMD, making him the 10th coach at the Division II level to hit the milestone with a single program. As the longest active coach inside the UMD athletic department, Cane has directed the Bulldogs to 15 winning seasons and three NCAA postseason appearances.

After a debut season that produced a 2-4-1 overall record, UMD went on to post double-digit win totals every year from 1995-2003 under Cane. The Bulldogs joined the upstart NSIC in 1996 and have claimed the league crown five times (1997, 1998, 2001-03) as well as five conference tournament titles (1997, 1998, 2001, 2003, and 2009) in 19 seasons of NSIC competition (The Bulldogs spent four seasons in the now-defunct North Central Conference from 2004-07). Cane has twice led UMD to unblemished conference marks (1997 and 2003) and both times been named the NSIC Coach of the Year in those seasons. Cane and the Bulldogs took a big step in officially establishing themselves as a legitimate program when the team claimed its first-ever national ranking in 1999. One year later, UMD set a team record with 17 wins and would be ranked as high as eighth nationally en route to capturing the program's first NCAA Tournament berth. The team matched that win total in 2013 and made its biggest splash yet in the postseason, hosting the NCAA II Central Region Tournament where it knocked off No. 22-ranked Winona State 1-0 in the second round (As the top seed, UMD received a bye in the opening round) and Southwest Minnesota 2-0 in the regional final before being knocked off by eventual NCAA II National Champion Grand Valley State, 2-1, in the quarterfinals. UMD would finish seventh in the final National Soccer Coaches Association of America (NSCAA) poll besting its 15th-ranked finish from the turn of the century. The Bulldogs have been a model of consistency under the guidance of Cane in the upper Midwest. His keen eye for talent and development has harvested 27 different NSCAA/Daktronics All-Central Region players including three All-Americans in Clare Dahmen and Hannah Bengston in 2009 and Maria Leider the following season. Additionally, Cane has manufactured a trio of NSIC Offensive Players of the Year, a pair of NSIC Defensive Players of the Year and a NSIC Newcomer of the Year (Sheridan Reiners) in 2014. For a three-year period, Cane doubled as the head coach of UMD women's tennis starting in 1995. Under the watch of Cane, the Bulldogs produced a 30-15 overall record and won three-straight NSIC titles. In his first season, UMD set a single-season record for victories and winning percentage with a 15-2 mark as the Bulldogs made their first-ever appearance in the NCAA Division II Midwest Regional. For his efforts, Cane was named the 1995 NSIC Coach of the Year. Following his graduation from Duluth's Cathedral High School, Cane played varsity soccer for three seasons (1979-82) at the College of St. Scholastica. After graduating from CSS in 1983 with bachelor's degrees in both secondary education and history, he remained at his alma mater as the head coach of the men's soccer varsity team. In his nine years with the Saints, Cane rolled up a 104-55-12 mark while winning two National Small Colleges Athletic Association National Championships and five NIAA District 12 titles. The 1988 NSCAA Coach of the Year Award recipient averaged 12 wins per campaign with CSS and endured just one losing season. Cane later played an integral role in establishing the St. Scholastica women's soccer program in 1990 and posted an overall mark of 15-35-2 as the team's head coach from 1990-93. In September 2013, Cane was inducted into the St. Scholastica Athletic Hall of Fame. Cane lives in Duluth with his wife, Patti. Their daughter, Amanda, is a 2011 graduate of St. Scholastica and owns JaneCane Photography in Duluth.



## KELLY GRGAS-WHEELER ASSISTANT COACH

A name certainly familiar to those in the Duluth area soccer circles, Kelly Grgas-Wheeler returns for her 16th season with the Bulldogs in 2019. Since her arrival, Grgas-Wheeler has helped guide student-athletes to success on-and-off the pitch. UMD has had five All-American citations, as well as 38 All-Central region picks. Her mentoring help craft one of the program's best offensive players in Maureen Stormont. Stormont left with multiple records etched in her name including most goals and points in a single season (2013). Stormont was named the 2014 NSIC Player of the Year as she left

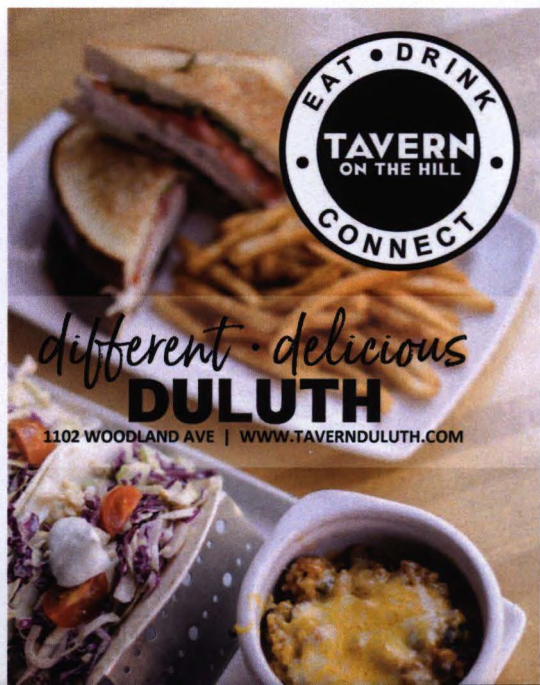
the program with the most goals and points. UMD has also seen a pair of conference Players of the Year honorees in Reagan Lloyd and Hannah Bengston during her time. In addition, Grgas-Wheeler has shaped Bulldogs into outstanding role models with a passion for community service. Four players (Sisley Ng, Kate McMahon, Kelli Klun and Kelly Duchene) have been awarded the Shjon Podein Community Service Award for best leadership qualities and volunteer contributions to the surrounding communities and 10 athletes have been bestowed with the Myles Brand All-Academic with Distinction Award (at least a 3.75 cumulative GPA), the most Duluth recent native Emily Fleissner in 2018. The longest-serving UMD assistant in program history, Grgas-Wheeler joined the Bulldog staff in 2004 with four years of previous high-level collegiate coaching experience tucked under her belt. That included a two-season assistant stint at NCAA Division-I University of Texas El Paso. While in El Paso, she helped mold the Miners into one of the most potent offensive clubs in the nation (UTEP led the nation in goals scored in 2002). In addition to duties behind the bench, her responsibilities with the Miners also consisted of scheduling, game management and recruiting. Before accepting the UTEP post, Grgas-Wheeler was an assistant coach at Cochise College (Ariz.) for two years. As a forward at Ottawa University in Ottawa, Kan., Grgas-Wheeler was a three-time All-Kansas Collegiate Athletic Conference (KCAC) First Team selection (1998, 1997, 1996). A two-year captain, she was voted the team's Most Valuable Player three times while rewriting the school's record books. She left Ottawa owning all-time marks for goals, assists, and points and still owns the number three mark for assists in a season (10 in 1997) and the eight spot for points in a single season (32 in 1997). Grgas-Wheeler was also a four-year letterwinner for the Braves on the basketball court and earned her bachelor of English degree from OU in 1999. Grgas-Wheeler received her NSCAA National Diploma in June of 2007. Since 2000, she has served as a Gitchi Gummi Club soccer coach, including as a technical coach for the U-9, U-10, U-12 and U-13 age groups the past four springs. She has directed multiple club teams to the MYSA state tournament, including in 2018, 2013 and 2010, as well as a U-13 runner-up in 2018, and a U-13 state title in 2003. Grgas-Wheeler is a graduate of Duluth East High School and also serves as the women's hockey sports information director at UMD, a role she has held since 2007. She lives in Duluth with her four-year old twin sons Lachlan and Luka.



## SONJA BARR GOALKEEPER COACH

Joining the Bulldogs for a fourth season, Sonja Barr will continue as the interim goalkeeper coach in 2019. A native of Duluth, Minn., Barr has ties associated to UMD as her father, Calvin, played football and her mother, Anita, played tennis. She is also familiar with Northern Sun Intercollegiate Conference play, as she competed four seasons at Bemidji State University as a goalkeeper. Barr earned numerous accomplishments over her stellar career - including holding the Beavers' record for lowest goals against average in a season (0.81). A NSIC all-conference selection in 2013,

Barr holds down the sixth most shutouts (16) in conference history. Barr graduated with a Bachelor's degree in exercise science with an emphasis in sports management and coaching specialist. Barr earned a level three goalkeeper coaching license.



**BLACK WOODS**  
**GRILL & BAR**

Locally-owned and Operated  
DULUTH | TWO HARBORS | PROCTOR

1102 WOODLAND AVE | WWW.TAVERNDULUTH.COM

different • delicious  
**DULUTH**



# GAME DAY

## 2019 Bulldog Soccer Schedule

| Date     | Opponent                     | Time(CST)  |
|----------|------------------------------|------------|
| Sept. 6  | Northern Michigan            | 6:00 p.m.  |
| Sept. 8  | Michigan Tech.               | 1:00 p.m.  |
| Sept. 12 | University of Bridgeport     | 6:00 p.m.  |
| Sept. 20 | Minnesota Crookston          | 5:00 p.m.  |
| Sept. 22 | Bemidji State                | 1:00 p.m.  |
| Sept. 27 | at Minnesota State           | 3:00 p.m.  |
| Sept. 29 | at Concordia-St.Paul         | 1:00 p.m.  |
| Oct. 4   | Augustana                    | 6:00 p.m.  |
| Oct. 6   | Wayne State (Neb.)           | 12:00 p.m. |
| Oct. 11  | at Northern State            | 3:00 p.m.  |
| Oct. 13  | at MSU-Moorhead              | 1:00 p.m.  |
| Oct. 18  | Winona State                 | 6:00 p.m.  |
| Oct. 20  | Upper Iowa                   | 12:00 p.m. |
| Oct. 25  | at Southwest Minnesota State | 6:00 p.m.  |
| Oct. 27  | at Sioux Falls               | 12:00 p.m. |
| Nov. 1   | at UMary                     | 3:00 p.m.  |
| Nov. 3   | Minot State                  | 12:00 p.m. |
| Nov. 8   | St. Cloud State              | 3:00 p.m.  |

## 2019 Bulldog Kicks For Causes Schedule

| Date     | Cause (Player)                           |
|----------|--|
| Sept. 6  | Special Olympics (Maddie Milbrath)       |
| Sept. 8  | Safe Haven (Mikayla Iaquinto)            |
| Sept. 12 | Bear Sanctuary (Morgan Rehnier)          |
| Sept. 20 | PAVSA (Gabby Bland)                      |
| Oct. 4   | MN Brain Injury Alliance (Jenna Eichten) |
| Oct. 6   | The Sanneh Foundation (Sophie Horn)      |
| Oct. 20  | Alzheimer's Association (Shannon King)   |



## Sports Fan Headquarters

- Complimentary Breakfast
- Complimentary Evening Reception (Mon-Thurs)
- Hotel Shuttle Service
- Indoor Pool, Kiddie Pool & Waterslide
- Near Miller Hill Mall

Country Inn & Suites Duluth North  
4257 Haines Road  
Duluth, MN 55811  
**(218) 740-4500**



## AmericInn<sup>®</sup> BY WYNDHAM

Next to Black Woods Grill & Bar

185 HWY 2, Proctor, MN 55810

[AmericInnDuluthSouth.com](http://AmericInnDuluthSouth.com)

**218-624-1026**

- Complimentary Breakfast
- Free WIFI
- Indoor Pool & Whirlpool
- Outdoor Fire Pit
- Meeting/Social Gathering

Local roots.

Global reach.

Wipfli combines a regional firm's personal service with a national firm's depth of experience.

Gain the valuable insights and support you need to achieve your goals.

[wipfli.com](http://wipfli.com)

Duluth: 218 722 4705

**WIPFLI**



FOLLOW US:

**umdstores.com**

1120 Kirby Drive - Duluth, MN 55812 - (218) 726-8520

VISIT OUR CAMPUS STORE - OPEN WEEKENDS!

## UMD ATHLETICS COUPON 2019-20 SEASON

**20% OFF**

ONE REG. PRICE UMD WEAR OR UMD IMPRINTED GIFT



ATH19

Coupon valid at campus store or on game day at Amsoil Arena, Malosky Stadium or Romano Gym.

Limit one coupon per item per purchase. Coupon not valid on sale items, prior purchases, or with other discounts or offers. Expires 4/30/20.



# BULLDOG SOCCER

## MEET YOUR 2019 UMD BULLDOGS



**#1 Sophia Grenz**  
Sophomore Goalkeeper  
Burnsville, Minn.  
Indiana State University



**#2 Maddie Milbrath**  
Senior Defender  
Eden Prairie, Minn.  
Eden Prairie H.S.



**#3 Julia Osborne**  
Sophomore Midfielder  
Plymoth, Minn.  
Robbinsdale Armstrong H.S.



**#4 Haley Ford**  
Sophomore Forward  
Apple Valley, Minn.  
Eastview H.S.



**#9 Logan Nash**  
Senior Forward  
Vail, Colo.  
Battle Mountain H.S.



**#10 Hannah Caldwell**  
Sophomore Forward  
Prior Lake, Minn.  
Prior Lake H.S.



**#11 Mikayla Iaquinto**  
Senior Defender  
Circle Pines, Minn.  
Centennial H.S.



**#12 Erin Walpole**  
Freshman Forward  
Superior, Wis.  
Superior H.S.



**#17 Brooke Scheuble**  
Sophomore Defender  
Webster, Minn.  
U.W. Stevens Point



**#18 Lauren Singstock**  
Freshman Forward  
Oshkosh, Wis.  
Oshkosh West H.S.



**#19 Tiana DeGrande**  
Freshman Forward  
Blaine, Minn.  
Blaine H.S.



**#20 Sarah Stange**  
Freshman Midfielder  
Andover, Minn.  
Anoka H.S.



**#25 Kristen Dagal**  
Sophomore Defender  
Eden Prairie, Minn.  
Eden Prairie H.S.



**#26 Jacqi Rae**  
Freshman Goalkeeper  
Eden Prairie, Minn.  
Eden Prairie H.S.



**#27 Becca Osborne**  
R.S. Freshman Goalkeeper  
Greenbay, Wis.  
Northern Michigan U.



**#29 Eliana Maricano**  
Freshman Defender  
Lino Lakes, Minn.  
Centennial H.S.



**#30 Lauren Hansen**  
Freshman Midfielder  
Grayslake, Ill.  
Grayslake North H.S.



**#31 Daisy Miller**  
Freshman Midfielder  
St. Michael, Minn.  
St. Michael-Albertsville H.S.



**#32 Holly Kaboord**  
Junior Forward  
Oregon, Wis.  
Oregon H.S.



# GAME DAY



**#5 Emily Hinz**  
Senior Midfielder  
St. Louis Park, Minn.  
St. Louis Park H.S.



**#6 Eblin Morales Benites**  
Sophomore Midfielder  
Minneapolis, Minn.  
Patrick Henry H.S.



**#7 Jenna Eichten**  
Junior Defender  
Rosemount, Minn.  
Rosemount H.S.



**#8 Mandy Conkel**  
Sophomore Forward  
Eagan, Minn.  
Eagan H.S.



**#13 Gabby Bland**  
Junior Midfielder  
Eagan, Minn.  
Eagan H.S.



**#14 Alli Jenkins**  
Sophomore Midfielder  
Coon Rapids, Minn.  
Andover H.S.



**#15 Megan Vatne**  
Sophomore Defender  
Andover, Minn.  
Andover H.S.



**#16 Kara Pascarella**  
Junior Forward  
Leawood, Kan.  
Johnson County C.C.



**#21 Shannon King**  
Sophomore Defender  
Batavia, Ill.  
Batavia Senior H.S.



**#22 Nan Glinsek**  
Senior Forward  
Lino Lakes, Minn.  
Centennial H.S.



**#23 Sophie Horn**  
Senior Midfielder  
Eagan, Minn.  
Eagan H.S.



**#24 Nora Griffin-Wiesner**  
Freshman Defender  
Golden Valley, Minn.  
Robbinsdale Armstrong H.S.

**INSPIRED**  
BY THOSE WHO NEVER GIVE UP



Proud to be the official  
Orthopedics & Sports Medicine  
team for the UMD Bulldogs.



**Essentia Health**

**OFFICIAL  
BULLDOG  
TAILGATE  
PARTIES**

**5-7 EVERY  
HOME GAME  
GIVEAWAYS  
& PRIZES!**

*The*  
**SPORTS  
GARDEN**  
BAR & GRILL





# GAME ON

with MP's  
new app!



Pay your bill, track energy use and monitor power outages from anywhere—giving sports fans on the go more time to **cheer on the Bulldogs**.

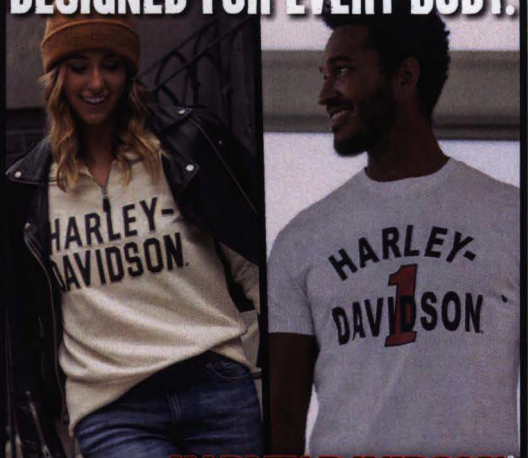
Proud to support UMD athletics.



[mnpower.com/MobileApp](http://mnpower.com/MobileApp)



## DESIGNED FOR EVERY BODY.



### HARLEY-DAVIDSON<sup>®</sup> Sport Center

Apparel, Motorcycles & Accessories!

Authorized Full-Line Dealer | Hwy 53 & Stebner Rd | Duluth, MN  
[hdduluth.com](http://hdduluth.com) | 218.729.9600 | 1.888.729.9600 | [f](https://www.facebook.com/hdduluth) | [i](https://www.instagram.com/hdduluth) | [y](https://www.youtube.com/hdduluth) | [in](https://www.linkedin.com/hdduluth)

## SMOKED TO PERFECTION.

Try our NEW naturally  
Pit-Smoked Brisket



Served on Italian bread with barbecue sauce.

Limited time only at participating restaurants from Sept. 5–Nov. 6, 2019. Subway is a Registered Trademark of Subway IP LLC. © 2019 Subway IP LLC.



Proud Supporters of UMD Athletics!



30 Store Locations Across 3 States MN, WI, MI



Visit us at: [superonefoods.com](http://superonefoods.com)



 RAV4



PROUD PARTNER  
OF UMD



Prototype shown with options. Two-tone color optional.



## PIEDMONT DENTAL

TRUSTED FAMILY PROFESSIONALS

Locally owned and operated for over fifty years

GENERAL FAMILY DENTISTRY - ORTHODONTICS

#### GENERAL DENTISTRY

Megan Ecker, DDS  
Clyde Finch, DDS  
David Haugen, DDS  
Brian Mart, DDS  
Jonathan Nash, DDS  
Heidi Spoelhof, DDS

#### ORTHODONTIST

Brian Landrigan, DDS MS  
Kirstin Carlson, DDS MS  
Luke Carlson, DDS MS  
Nathan Halstead, DDS MS

• Adult Dentistry • Children's Dentistry

### 218-722-0823

[www.piedmontheightsdental.com](http://www.piedmontheightsdental.com)