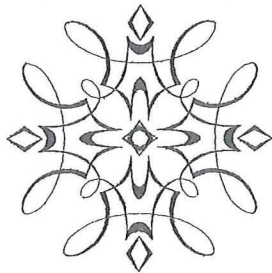

Tudor Rozette

From Glensheen's Volunteer Office

November 2000



Christmas is Coming

Christmas decorating starts November 1st with head elves, Joy Fon and Michelle Rutt, supervising 15 Volunteers who signed up to help. The decorating continues until Thanksgiving, and if you can volunteer any additional time to help, just call and let us know.

We are also preparing for the Christmas City of the North Parade. Several Volunteers have signed up to decorate the float on November 4th and 5th and then be in the parade on November 17. Watch for the Glensheen float and Volunteers on TV or in person at the parade!

The Holiday Premiere, which is a special invitation for all Volunteers and a guest to get a sneak preview of the Christmas exhibit, will be held on Monday, November 27th from 4 to 7 pm. Come and see "The Joy of Tradition" for yourself and be treated to refreshments on the lower level.

Next come the Christmas Brunches. So we are looking for Volunteers to help as hosts and hostesses and as room or area docents. We are encouraging Living History costumes if you wish. Here are the dates all in December:

Sat Dec 2 Sun Dec 3
Tue Dec 5 Thu Dec 7 Sat Dec 9 Sun Dec 10
Tue Dec 12 Thu Dec 14 Sat Dec 16 Sun Dec 17

Volunteers need to be here by 9:30 am and will be done by 11:00 am.

Finally, we need Docents to help give tours when we open the week after Christmas. Here is the schedule of extra days we are open: Tuesday, Dec 26; Wednesday, Dec 27; Thursday, Dec 28. Call 726-8918 to help!!!!!!!



Carol & Sam Leave

Both of our Volunteer Assistants, Carol Wolf and Samantha Smith, have finished up working in the office now that the busy visitor season has come to an end.

Neither Carol nor Sam are leaving town and both have offered to continue as Volunteers, so we are not really losing staff so much as gaining two really great Volunteers!

Carol continues to work as a server at Timberlodge in Canal Park and Sam has taken a new job as a server at Applebees in Superior, which just opened up.

We wish them both well and will call upon them to help out as Volunteers. Carol has already started helping me reproduce photos of the Congdon family for the Christmas exhibit.

GLENSHEEN VOLUNTEER PROGRAM RECEIVES AWARD

*The Junior
League of Duluth
presented us with
a "Community
Partnership
Certificate" at
their 80th
Anniversary
party on October
14, 2000 at the
Depot.*

*The award was
accepted by our
21 year
Volunteers, Fran
Lamberson and
Marion Ario.*

Plant Sale Ends

We have successfully found good homes for all the extra houseplants which needed to be removed from the furniture and windowsills of the house.

The biggest and best of the plants were all put in the Breakfast Room, giving that area a much improved image. All the other plants were sold and taken home by Volunteers, staff, and visitors who came on tour.

Thank yous go to Samantha for all her work repotting plants that were in original Congdon pots, to Lynn, Ken and Kevin for moving all the tall plants to the Winter Garden, and to everyone who adopted a plant to help us out.

The Volunteer Docent Council made about \$50 from the plant sale, which will be used for projects to improve Glensheen.

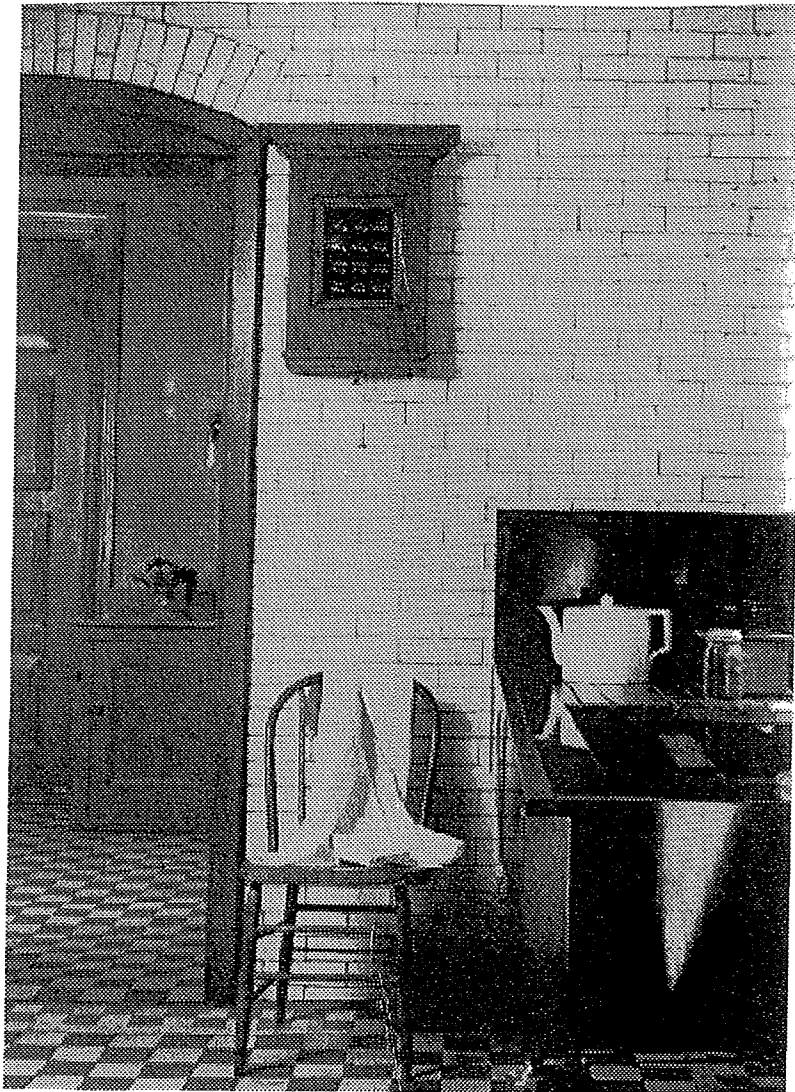
By Hedrich-Blessing,
Glessner House
Museum

EDUCATIONAL INSERT

The Annunciator was a 19th Century household innovation that employers loved and servants hated. It was a signal board placed prominently in the servants' portion of the house - in the kitchen in the Glessner House, seen here - and wired to call buttons in various rooms.

A wet cell battery powered this low voltage electrical system. When pressed, a button sent out an impulse that set off a bell and tipped up the arrow indicator for that location on the annunciator board.

The servant assigned that portion of the house was expected to drop everything



and fulfill whatever request was made. It was a call that had to be obeyed whenever it sounded: "The Butler, Footman, Ladies' Maid, and Housemaid are to alternate in staying in the house in the evenings;" reads Frances Glessner's instructions to her servants for summer 1892, "one is to be on duty every evening until ten o'clock, and stay where the bells can be heard and answered."

Persian Carpets

Where do Glensheen's Persian carpets come from? I've been studying up on carpets for our carpet exhibit in February and for a special tour I had to develop for a Weaver's Convention in October. Here's what I've found out so far.

The map below of Iran, formerly called Persia, shows the towns where a few of our carpets come from.



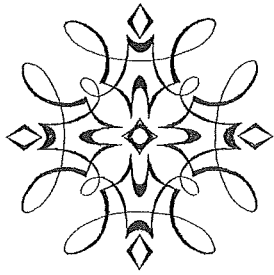
TABRIZ - Glensheen's Tabriz carpet hangs across from the Billiards Room.

SARUCK - Glensheen's Saruck carpet was in the Dining Room, a copy made in 1986 is there now.

MESHED - The Red Guest Bedroom has a carpet from Meshed.

KIRMAN - A Kirman carpet is in the 3rd floor Boy's Lounge.

BIJAR - Bijar is a small town near Kirman in the province of Kirmanshah in the south of Iran. We have two Bijar carpets, one in the Living Room and one in the Library.



MIA Visit Enjoyable

Ten Glensheen Volunteers and staff and 13 Tweed Museum of Art Volunteers and staff thoroughly enjoyed their outing to the Minneapolis Institute of Arts on October 24, 2000.

The purpose of the trip was to offer an opportunity for Glensheen and Tweed workers to see the traveling art exhibit from the Smithsonian Institution called "American Impressionism", before it left at the end of October. Glensheen and Tweed paid for the museum entrance fee as a thank you for their workers.

We boarded our bus at 8:00 am and got to the Art Institute by 11:00 am for our tour. Susan Hundman, Educator at Tweed arranged for 2 tour guides to give us tours.

The guide for our group explained the history and elements of American Impressionism, and pointed out how many of the art works included in the exhibit didn't fit this description exactly. We saw several Childe Hassam paintings, James Whistler and students, learned about Tonalism, and came away with a better understanding of this style of art.

VOLUNTEERS -

Remember to record your hours for your bus trip to the MIA.

Visitor Comments

This newsletter is made possible by the support of the Minnesota Humanities Commission in cooperation with the National Endowment for the Humanities and the Minnesota State Legislature.

Written and edited by Rachael Martin

GENERAL COMMENTS:

- This was our most enjoyable attraction we have experienced in Duluth. Thank you.
- The "group" tour was a much improved tour over the "individuals" in each room explaining it last time we were here. Each tour is informative - wonderful!

SECURITY ATTENDANTS:

- Amy - Excellent docent, good information and well spoken
- Andy - is exceptional guide - give him a raise.
- Bob - is an informative, enthusiastic, and wonderful guide, we enjoyed his tour immensely.
- Ellen - Excellent guide, I've been here before and learned much today.
- Jon - Was excellent, very friendly and informative, he maintained his mood even with a couple of unruly kids in our tour group.
- Steve - Wonderful job being sure all group members had time to look and were within ear shot of his narration, he provided the facts with fun and warmth.

VOLUNTEERS:

- Carol - Very nice, informed and helpful, she made the tour much more fun.
- Mary T - Excellent guide, so educational, Mary made it worthwhile.
- Samantha - Was great, extremely knowledgeable.
- Pearl E - She's wonderful! So enthusiastic - she brought the people to life.
- Pearl M - We thoroughly enjoyed our tour with Pearl, she was excellent!

*Thanks, Gordon Fon, for donating an office chair for the Volunteer Office.
We love it!!*

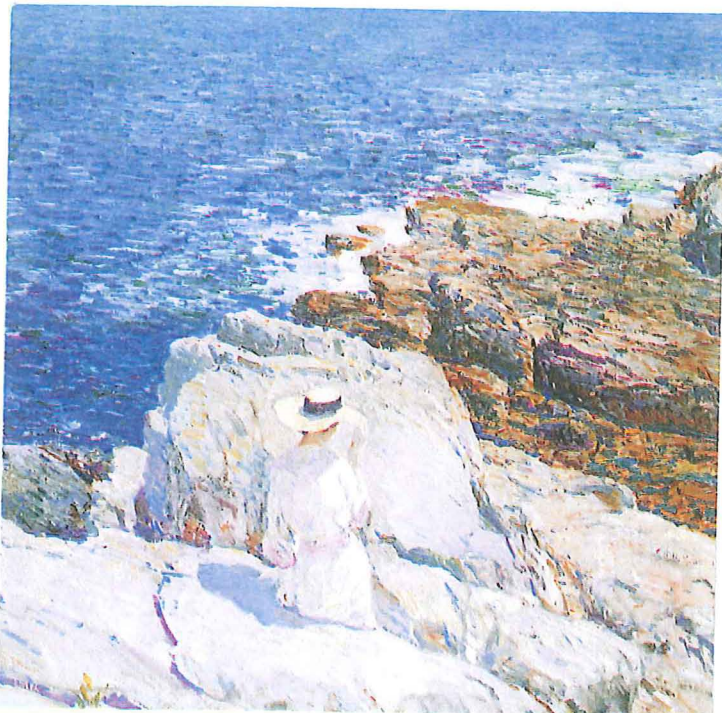
It was interesting to observe how the MIA does tours, how the use of the guide's flashlight helped, and how to keep us in the one hour time frame, not every painting was pointed out.

After the tour we went our own ways to either have lunch or look at more exhibits, or both. Some of us checked out the John Bradstreet Room from the Prindle House (now the John Duss Conservatory) in Duluth. That room could have fit right in anywhere at Glensheen.

Also an image of John Bradstreet and a fireplace facade from the Sellwood House in Duluth were on the 3rd floor. Exhibit labels referred to comparisons at Glensheen in both areas. Frank Lloyd Wright Arts and Crafts style furniture and furnishings were on exhibit, including William Morris wallpaper. All related to items at Glensheen.

We also met Jen Carlquist, Glensheen's former Education and Volunteer Coordinator, who now works at MIA. She gave us and Tweed a beautiful poster of the "American Impressionism" exhibit. Look for it on the door of the Volunteer Office.

At 2:00 pm we boarded the bus for our return to Duluth. We got to the Glensheen parking lot by 5:00 pm. Not only did we enjoy the visit to the Art Institute, but we met new people from Tweed Museum of Art who share our interests and experiences as Docents.



Childe Hassam, *The South Ledges, Appledore*, 1913
Smithsonian American Art Museum
Gift of John Gellatly

Calendar of Events

Nov 17 - Christmas City of the North Parade, Watch for Glensheen float

Mon, Nov 27 - Christmas Exhibit Premiere , 4:00 - 7:00 pm- all Volunteers invited!

Dec 2,3,5,7,9,10,12,14,16,17 - Christmas Brunches, 9:30 am - Need help, please call

Sun, Dec 24 - GLENSHEEN CLOSED, no tours today

Dec 26, 27, 28 - GLENSHEEN OPEN, Docents needed to give tours, please call



Volunteer Office
Glensheen
3300 London Road
Duluth, MN 55804