

1/8-
AdEm

Minority Enrollment Report

Fall Quarter 1983

University of Minnesota

Office for Student Affairs

Office of Admissions and Records

**Andrew Huang
Data and Reporting Services
260 Williamson Hall
376-1820
November, 1983**

Table of Contents

	<u>Page</u>
Notes	1
Definitions	2
Figure 1, Enrollment Trends, U of M, by Minority Group, Fall 1972 - Fall 1983 . .	3
 <u>Tables</u>	
1. Minority Enrollment, by Minority Group and Campus/College, Fall 1982 and 1983	4
2. Minority Enrollment, by Minority Group, Sex, and Campus/College, Fall Quarter 1983	6
3. Minority Enrollment, Twin Cities Campus, by Minority Group and Student Level, Fall Quarter, 1983	8
4. Comparison of Minority Enrollment by Minority Group and Campus, Fall Quarters 1979 through 1983	9

NOTES

1. All data in the report are based on the number of students registered as of the end of the second week of classes.
2. Ethnic background information of students comes either from application forms for admission, annual request for demographic data updating in spring term, and/or ethnic survey cards distributed to registered students during fall quarters before 1982. In all cases the supplying of ethnic data is optional.
3. Data for the years other than 1983 are taken from the annual Fall Quarter Minority Enrollment Report prepared by the Office of Admissions and Records.
4. The descriptions of the ethnic categories in the report are the latest version proposed and used by the United States Department of Education.

DEFINITION

ETHNIC BACKGROUND OF STUDENTS

Black (Afro-American, non-Hispanic origin)--A person having origins in any of the black racial groups of Africa (excluding persons of Spanish, Portuguese, Latin American, or other Hispanic origin).

American Indian or Alaskan Native--A person having origins in any of the original peoples of North America, and who maintains a cultural identification through tribal affiliation or community recognition.

Asian American or Pacific Islander--A person having origins in any of the original peoples of the Far East, Southeast Asia, the Indian subcontinent, or the Pacific Islands. The area includes, for example, China, Japan, Korea, the Philippine Islands, and Samoa.

Hispanic (Spanish Surname American)--A person of Mexican, Puerto Rican, Cuban, Central or South American, or other Spanish or Portuguese culture or origin, regardless of race.

All other Students--Includes the following two categories:

Caucasian/White, non-Hispanic--A person having origins in any of the original peoples of Europe, North Africa, or the Middle East (excluding persons of Spanish or Portuguese origin).

International Student (Foreign Student)--i.e., Non-Resident Alien: a person who is not a citizen of the United States and who is in this country on a temporary basis and does not have the right to remain indefinitely. Resident Aliens, non-citizens who have been lawfully admitted for permanent residence (who hold a green card, Form I 151) are included in the appropriate Race/Ethnic categories along with United States citizens.

STUDENT LEVEL

Undergraduate Students--Those who have met all requirements for admission to the University and who pursue programs which lead to either bachelor's or associate degrees.

First Professional Students--Those who are enrolled in a professional school or program which requires at least 2 academic years of college work for entrance and a total of at least 6 years for a degree.

Graduate Students--Those who hold the bachelor's or first-professional degree or equivalent and are working toward a master's or doctor's degree.

Unclassified Students--Those who are not candidates for a degree or other formal award and who are taking courses in regular classes with other students.

Enrollment Trends, U of M, by Minority Group
Fall 1972 - Fall 1983

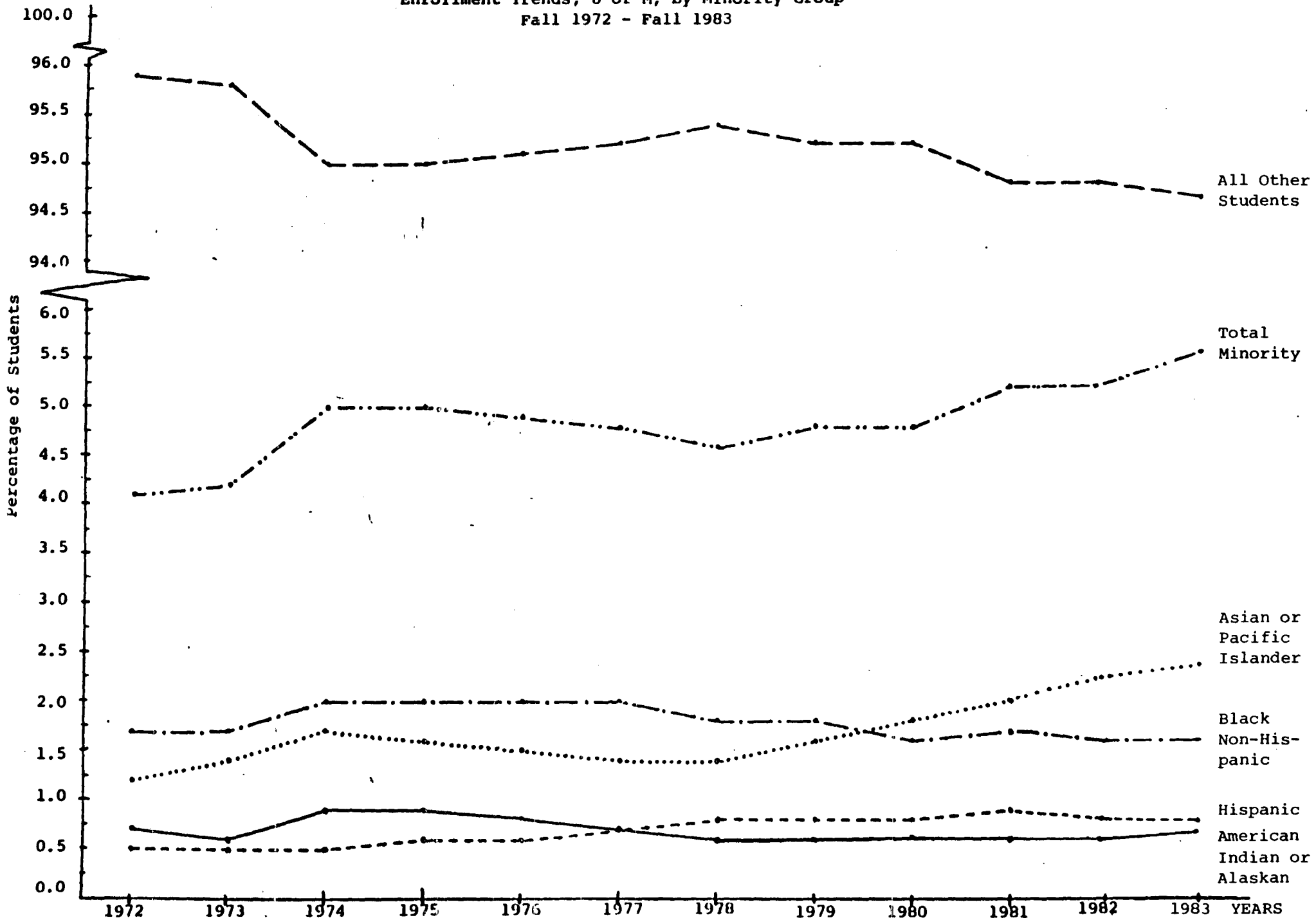


TABLE 1: MINORITY ENROLLMENT^a, BY MINORITY GROUP AND CAMPUS/COLLEGE, FALL 1982 AND 1983

Campus/College	Minority Group								Total Minority Students		ALL Other Students		TOTAL ALL STUDENTS		
	Black Non- Hispanic		American Indian or Alaskan		Asian or Pacific Islander		Hispanic American								
	1982	1983	1982	1983	1982	1983	1982	1983	1982	1983	1982	1983	1982	1983	
Crookston	N %	6 (0.5)	2 (0.2)	11 (1.0)	7 (0.6)	1 (0.1)	1 (0.1)	21 (1.8)	20 (1.7)	39 (3.4)	30 (2.6)	1110 (96.6)	1113 (97.4)	1149 (100.0)	1143 (100.0)
Duluth															
Business & Economics		4	3	10	12	6	5	0	0	20	20	1510	1429	1530	1449
Education		6	5	4	15	4	3	0	0	14	23	1018	999	1032	1022
Fine Arts		4	3	6	6	0	1	0	0	10	10	360	285	370	295
Graduate		1	1	5	7	0	3	0	0	6	11	241	239	247	250
Letters & Science		19	19	72	97	17	29	5	6	113	151	4244	4178	4357	4329
Medicine		0	0	2	3	0	0	0	0	2	3	93	94	95	97
Social Development		0	0	5	7	0	0	0	0	5	7	98	81	103	88
TOTAL Duluth	N %	34 (0.4)	31 (0.4)	104 (1.3)	147 (2.0)	27 (0.4)	41 (0.5)	5 (0.1)	6 (0.1)	170 (2.2)	225 (3.0)	7564 (97.8)	7305 (97.0)	7734 (100.0)	7530 (100.0)
Mayo-Graduate School	N %	1 (0.3)	3 (1.0)	1 (0.3)	0 (0.0)	9 (2.8)	4 (1.4)	2 (0.6)	2 (0.7)	13 (4.0)	9 (3.1)	315 (96.0)	282 (96.9)	328 (100.0)	291 (100.0)
Morris	N %	65 (4.1)	57 (3.6)	20 (1.3)	20 (1.2)	7 (0.4)	6 (0.4)	6 (0.4)	5 (0.3)	98 (6.2)	88 (5.5)	1485 (93.8)	1515 (94.5)	1583 (100.0)	1603 (100.0)
Twin Cities															
Agriculture		14	17	2	1	9	11	8	3	33	32	1504	1261	1537	1293
Biological Sciences		3	3	0	1	9	8	1	2	13	14	408	401	421	415
Education		26	31	4	3	8	12	10	11	48	57	1994	2183	2042	2240
Forestry		1	2	2	1	2	1	1	1	6	5	310	394	316	399
General College		295	279	67	62	227	240	55	74	644	655	2784	2696	3428	3351
Graduate School		81	69	14	17	200	135	60	59	355	280	7385	7340	7740	7620
Health Sciences															
Dental Hygiene		0	0	1	1	1	2	1	0	3	3	102	68	105	71
Dentistry		5	2	3	3	7	11	3	4	18	20	529	506	547	526

(continued on next page)

TABLE 1: MINORITY ENROLLMENT^a, BY MINORITY GROUP AND CAMPUS/COLLEGE, FALL 1982 AND 1983

Campus/College	Minority Group								Total Minority Students		ALL Other Students		TOTAL ALL STUDENTS	
	Black Non-Hispanic		American Indian or Alaskan		Asian or Pacific Islander		Hispanic American							
	1982	1983	1982	1983	1982	1983	1982	1983	1982	1983	1982	1983	1982	1983
Twin Cities (continued)														
Health Sciences														
Medical School	19	20	8	8	19	34	39	37	85	99	1935	1920	2020	2019
Medical Technology	0	1	0	0	0	1	0	0	0	2	64	58	64	60
Mortuary Science	0	1	1	0	0	0	0	1	1	2	70	85	71	87
Nursing	4	4	2	4	7	8	2	1	15	17	453	394	468	411
Occupational Therapy	1	1	0	0	0	0	0	0	1	1	74	64	75	65
Pharmacy	2	2	2	2	16	13	0	0	20	17	271	265	291	282
Physical Therapy	0	0	0	0	1	0	0	0	1	0	60	61	61	61
Public Health	7	6	3	4	3	3	3	2	16	15	241	246	257	261
SUBTOTAL Hlth. Sci.	38	37	20	22	54	72	48	45	160	176	3799	3667	3959	3843
Home Economics	16	26	0	3	22	19	4	5	42	53	1310	1309	1352	1362
Law School	28	25	11	9	4	0	23	29	66	63	654	652	720	715
Liberal Arts	292	290	73	84	407	452	151	148	923	974	16622	16173	17545	17147
Management	11	24	4	2	20	23	4	3	39	52	1538	1484	1577	1536
Technology	54	54	14	19	302	334	37	39	407	446	5873	5642	6280	6088
University College	6	4	1	0	3	0	5	1	15	5	141	123	156	128
Veterinary Medicine	0	0	1	1	2	2	1	2	4	5	306	303	310	308
TOTAL Twin Cities	N 865	861	213	225	1269	1309	408	422	2755	2817	44628	43628	47383	46445
	% (1.8)	(1.8)	(0.4)	(0.5)	(2.7)	(2.8)	(0.9)	(0.9)	(5.8)	(6.0)	(94.2)	(94.0)	(100.0)	(100.0)
Waseca	N 0	1	0	0	1	0	0	0	1	1	1112	1109	1113	1110
	% (0.0)	(0.1)	(0.0)	(0.0)	(0.1)	(0.0)	(0.0)	(0.0)	(0.1)	(0.1)	(99.9)	(99.9)	(100.0)	(100.0)
TOTAL ENROLLMENT	N 971	955	349	399	1314	1361	442	455	3076	3170	56214	54952	59290	58122
	% (1.6)	(1.6)	(0.6)	(0.7)	(2.2)	(2.3)	(0.8)	(0.8)	(5.2)	(5.4)	(94.8)	(94.6)	(100.0)	(100.0)

^aMinority students are based on 84.9 percent of the total student population who had provided ethnic background information through either one or the combination of the collection methods described in Notes on page 1. Data for Duluth-Medicine, Mayo-Graduate School of Medicine, Graduate School, School of Dentistry, Medical School, School of Pharmacy, Law School and College of Veterinary Medicine are supplied by the student records office from each college. Minority enrollment figures for the College of Education, General College, and School of Public Health are estimated from the institutional reports of the Office of Admissions and Records, Fall Quarter, 1983.

TABLE 2: MINORITY ENROLLMENT^a, BY MINORITY GROUP, SEX AND CAMPUS/COLLEGE, FALL QUARTER 1983

Campus/College		Minority Group								Total Minority Students	ALL Other Students		TOTAL ALL STUDENTS		
		Black Non- Hispanic		American Indian or Alaskan		Asian or Pacific Islander		Hispanic American			M	F	M	F	
		M	F	M	F	M	F	M	F						
Crookston	N	2	0	4	3	1	0	10	10	17	13	562	551	579	564
	%	(0.3)	(0.0)	(0.7)	(0.5)	(0.2)	(0.0)	(1.7)	(1.8)	(2.9)	(2.3)	(97.1)	(97.7)	(100.0)	(100.0)
Duluth															
Business & Economics		3	0	5	7	3	2	0	0	11	9	829	600	840	609
Education		4	1	9	6	2	1	0	0	15	8	378	621	393	629
Fine Arts		2	1	1	5	0	1	0	0	3	7	125	160	128	167
Graduate		1	0	4	3	0	3	0	0	5	6	124	115	129	121
Letters & Science		11	8	45	52	20	9	4	2	80	71	2324	1854	2404	1925
Medicine		0	0	3	0	0	0	0	0	3	0	66	28	69	28
Social Development		0	0	1	6	0	0	0	0	1	6	14	67	15	73
TOTAL Duluth	N	21	10	68	79	25	16	4	2	118	107	3860	3445	3978	3552
	%	(0.5)	(0.3)	(1.7)	(2.2)	(0.6)	(0.4)	(0.1)	(0.1)	(2.9)	(3.0)	(97.0)	(97.0)	(100.0)	(100.0)
Mayo-Graduate School	N	3	0	0	0	4	0	2	0	9	0	247	35	256	35
	%	(1.2)	(0.0)	(0.0)	(0.0)	(1.5)	(0.0)	(0.8)	(0.0)	(3.5)	(0.0)	(96.5)	(100.0)	(100.0)	(100.0)
Morris	N	35	22	10	10	3	3	4	1	52	36	775	740	827	776
	%	(4.2)	(2.8)	(1.2)	(1.3)	(0.4)	(0.4)	(0.5)	(0.1)	(6.3)	(4.6)	(93.7)	(95.4)	(100.0)	(100.0)
Twin Cities															
Agriculture		10	7	0	1	4	7	1	2	15	17	832	429	847	446
Biological Sciences		1	2	0	1	6	2	2	0	9	5	227	174	236	179
Education		11	20	0	3	6	6	6	5	23	34	777	1406	800	1440
Forestry		2	0	0	1	1	0	1	0	4	1	309	85	313	86
General College		130	149	28	34	173	67	42	32	373	282	1659	1037	2032	1319
Graduate School		42	27	12	5	88	47	32	27	174	106	4237	3103	4411	3209
Health Sciences															
Dental Hygiene		0	0	0	1	0	2	0	0	0	3	0	68	0	71
Dentistry		2	0	2	1	8	3	3	1	15	5	396	110	411	115

(continued on next page)

TABLE 2: MINORITY ENROLLMENT^a, BY MINORITY GROUP, SEX AND CAMPUS/COLLEGE, FALL QUARTER 1983

Campus/College	Minority Group										ALL Other Students	TOTAL ALL STUDENTS			
	Black Non-Hispanic		American Indian or Alaskan		Asian or Pacific Islander		Hispanic American		Total Minority Students			M	F	M	F
	M	F	M	F	M	F	M	F	M	F					
Twin Cities (continued)															
Health Sciences															
Medical School	16	4	3	5	28	6	23	14	70	29	1276	644	1346	673	
Medical Technology	0	1	0	0	0	1	0	0	0	2	16	42	16	44	
Mortuary Science	0	1	0	0	0	0	1	0	1	1	69	16	70	17	
Nursing	0	4	1	3	1	7	0	1	2	15	47	347	49	362	
Occupational Therapy	0	1	0	0	0	0	0	0	0	1	2	62	2	63	
Pharmacy	2	0	1	1	4	9	0	0	7	10	139	126	146	136	
Physical Therapy	0	0	0	0	0	0	0	0	0	0	6	55	6	55	
Public Health	1	5	3	1	1	2	1	1	6	9	76	170	82	179	
SUBTOTAL Health Science	21	16	10	12	42	30	28	17	101	75	2027	1640	2128	1715	
Home Economics	4	22	2	1	2	17	2	3	10	43	111	1198	121	1241	
Law School	12	13	6	3	0	0	22	7	40	23	384	268	424	291	
Liberal Arts	136	154	42	42	247	205	82	66	507	467	7970	8203	8477	8670	
Management	12	12	0	2	12	11	3	0	27	25	856	628	883	653	
Technology	43	11	14	5	252	82	29	10	338	108	4728	914	5066	1022	
University College	0	4	0	0	0	0	0	1	0	5	48	75	48	80	
Veterinary Medicine	0	0	0	1	2	0	0	2	2	3	158	145	160	148	
TOTAL Twin Cities	N	424	437	114	111	835	474	250	172	1623	1194	24323	19305	25946	20499
	%	(1.6)	(2.1)	(0.4)	(0.6)	(3.2)	(2.3)	(1.0)	(0.8)	(6.2)	(5.8)	(93.8)	(94.2)	(100.0)	(100.0)
Waseca	N	0	1	0	0	0	0	0	0	1	506	603	506	604	
	%	(0.0)	(0.2)	(0.0)	(0.0)	(0.0)	(0.0)	(0.0)	(0.0)	(0.2)	(100.0)	(99.8)	(100.0)	(100.0)	
TOTAL ENROLLMENT	N	485	470	196	203	868	493	270	185	1819	1351	30273	24679	32092	26030
	%	(1.5)	(1.8)	(0.6)	(0.8)	(2.7)	(1.9)	(0.9)	(0.7)	(5.7)	(5.2)	(94.3)	(94.8)	(100.0)	(100.0)

^aSee footnote at end of Table 1.

TABLE 3: MINORITY ENROLLMENT^a, TWIN CITIES CAMPUS, BY MINORITY GROUP AND STUDENT LEVEL, FALL QUARTER, 1983

Level	Minority Group								Total Minority Students		ALL Other Students		TOTAL ALL STUDENTS	
	Black Non- Hispanic		American Indian or Alaskan		Asian or Pacific Islander		Hispanic American							
	N	%	M	F	M	F	M	F	M	F	M	F	M	F
Undergraduate														
Freshmen	280	32.5	94	41.8	379	29.0	114	27.0	867	30.8	9423	21.6	10290	22.1
Sophomores	185	21.5	26	11.5	279	21.3	58	13.8	548	19.5	6602	15.1	7150	15.4
Juniors	131	15.2	33	14.7	238	18.2	53	12.6	455	16.1	7015	16.1	7470	16.1
Seniors	104	12.1	24	10.7	182	13.9	47	11.1	357	12.7	7381	16.9	7738	16.7
TOTAL Undergraduates	700	81.3	177	78.7	1078	82.4	272	64.5	2227	79.1	30421	69.7	32648	70.3
First Professionals ^b	45	5.2	21	9.3	37	2.8	70	16.6	173	6.1	2529	5.8	2702	5.8
Graduates ^c	79	9.2	21	9.3	138	10.5	63	14.9	301	10.7	7863	18.0	8164	17.6
Unclassified ^d	37	4.3	6	2.7	56	4.3	17	4.0	116	4.1	2815	6.5	2931	6.3
TOTAL ENROLLMENT	861	100.0	225	100.0	1309	100.0	422	100.0	2817	100.0	43628	100.0	46445	100.0

^aMinority enrollment figures are based on 85.9 percent of students at the Twin Cities campus who provided ethnic background information through either one or the combination of the collection methods described in Notes on page 1.

^bInclude regular students of the School of Dentistry, Medical School, Law School, and the College of Veterinary Medicine, and Doctor of Pharmacy students of the College of Pharmacy.

^cInclude students enrolled in the Graduate School, program students in the School of Public Health, M.Ed. degree students in the College of Education and M.Ag. degree students in the College of Agriculture.

^dInclude special students of all colleges.

TABLE 4: COMPARISON OF MINORITY ENROLLMENT, BY MINORITY GROUP AND CAMPUS, FALL QUARTER 1979 THROUGH 1983

Minority Group/Campus	1979	1980	1981	1982	1983	Increase in Attendance 1979-1983		Increase in Attendance 1982-1983		
						N	%	N	%	
Black Non-Hispanic										
Crookston	9	3	2	6	2	- 7	-77.8	- 4	-66.7	
Duluth	37	57	32	34	31	- 6	-16.2	- 3	- 8.8	
Mayo	6	1	0	1	3	- 3	-50.0	2	200.0	
Morris	38	60	65	65	57	19	50.0	- 8	-12.3	
Twin Cities	904	865	926	865	861	- 43	- 4.7	- 4	- 0.5	
Waseca	0	0	0	0	1	1	--	1	--	
TOTAL University	994	986	1025	971	955	- 39	- 3.9	- 16	- 1.6	
American Indian or Alaskan										
Crookston	12	7	12	11	7	- 5	-41.7	- 4	-36.4	
Duluth	87	80	73	104	147	60	68.9	43	41.3	
Mayo	2	0	1	1	0	- 2	-100.0	- 1	-100.0	
Morris	21	15	11	20	20	- 1	- 4.7	0	0.0	
Twin Cities	228	228	236	213	225	- 3	- 1.3	12	5.6	
Waseca	0	0	0	0	0	0	0.0	0	0.0	
TOTAL University	350	330	333	349	399	49	14.0	50	14.3	
Asian or Pacific Island										
Crookston	3	2	3	1	1	- 2	-66.7	0	0.0	
Duluth	30	18	23	27	41	11	36.7	14	51.8	
Mayo	8	15	15	9	4	- 4	-50.0	- 5	-55.6	
Morris	2	3	5	7	6	4	200.0	- 1	-14.3	
Twin Cities	845	996	1162	1269	1309	464	54.9	40	3.1	
Waseca	3	1	0	1	0	- 3	-100.0	- 1	-100.0	
TOTAL University	891	1035	1208	1314	1361	470	52.7	47	3.6	
Hispanic American										
Crookston	13	18	16	21	20	7	53.8	- 1	- 4.7	
Duluth	20	23	20	5	6	- 14	-70.0	1	20.0	
Mayo	4	6	1	2	2	- 2	-50.0	0	0.0	
Morris	3	4	4	6	5	2	66.7	- 1	-16.7	
Twin Cities	430	435	462	408	422	- 8	- 1.8	14	3.4	
Waseca	0	1	0	0	0	0	0.0	0	0.0	
TOTAL University	470	487	503	442	455	- 15	- 3.2	13	2.9	

(continued on next page)

TABLE 4: COMPARISON OF MINORITY ENROLLMENT, BY MINORITY GROUP AND CAMPUS, FALL QUARTER 1979 THROUGH 1983

Minority Group/Campus	1979	1980	1981	1982	1983	Increase in Attendance 1979-1983		Increase in Attendance 1982-1983	
						N	%	N	%
All Minority Students									
Crookston	37	30	33	39	30	- 7	-18.9	- 9	-23.1
Duluth	174	158	148	170	225	51	29.3	55	32.3
Mayo	20	22	17	13	9	- 11	-55.0	- 4	-30.7
Morris	64	82	85	98	88	24	37.5	- 10	-10.2
Twin Cities	2407	2524	2786	2755	2817	410	17.0	62	2.2
Waseca	3	2	0	1	1	- 2	-66.7	0	0.0
TOTAL University	<u>2705</u>	<u>2818</u>	<u>3069</u>	<u>3076</u>	<u>3170</u>	<u>465</u>	<u>17.2</u>	<u>94</u>	<u>3.1</u>
All Other Students									
Crookston	1072	1149	1128	1110	1113	- 41	- 3.8	3	0.3
Duluth	6681	7235	7376	7564	7305	624	9.3	-259	- 3.4
Mayo	402	363	293	315	282	-120	-29.8	- 33	-10.5
Morris	1386	1542	1605	1485	1515	129	9.3	20	2.0
Twin Cities	43358	44862	44647	44628	43628	270	0.6	-1000	- 2.2
Waseca	1108	1121	1101	1112	1109	1	0.1	- 3	- 0.3
TOTAL University	<u>54007</u>	<u>56272</u>	<u>56150</u>	<u>56214</u>	<u>54952</u>	<u>945</u>	<u>1.7</u>	<u>-1262</u>	<u>- 2.2</u>
All Students									
Crookston	1109	1179	1161	1149	1143	- 34	- 3.1	- 6	- 0.5
Duluth	6855	7393	7524	7734	7530	675	9.8	-204	- 2.6
Mayo	422	385	310	328	291	-131	-31.0	- 37	-11.3
Morris	1450	1624	1690	1583	1603	153	10.5	20	1.3
Twin Cities	45765	47386	47433	47383	46445	680	1.5	-938	- 2.0
Waseca	1111	1123	1101	1113	1110	- 1	- 0.1	- 3	- 2.6
TOTAL University	<u>56712</u>	<u>59090</u>	<u>59219</u>	<u>59290</u>	<u>58122</u>	<u>1410</u>	<u>2.5</u>	<u>-1168</u>	<u>- 2.0</u>