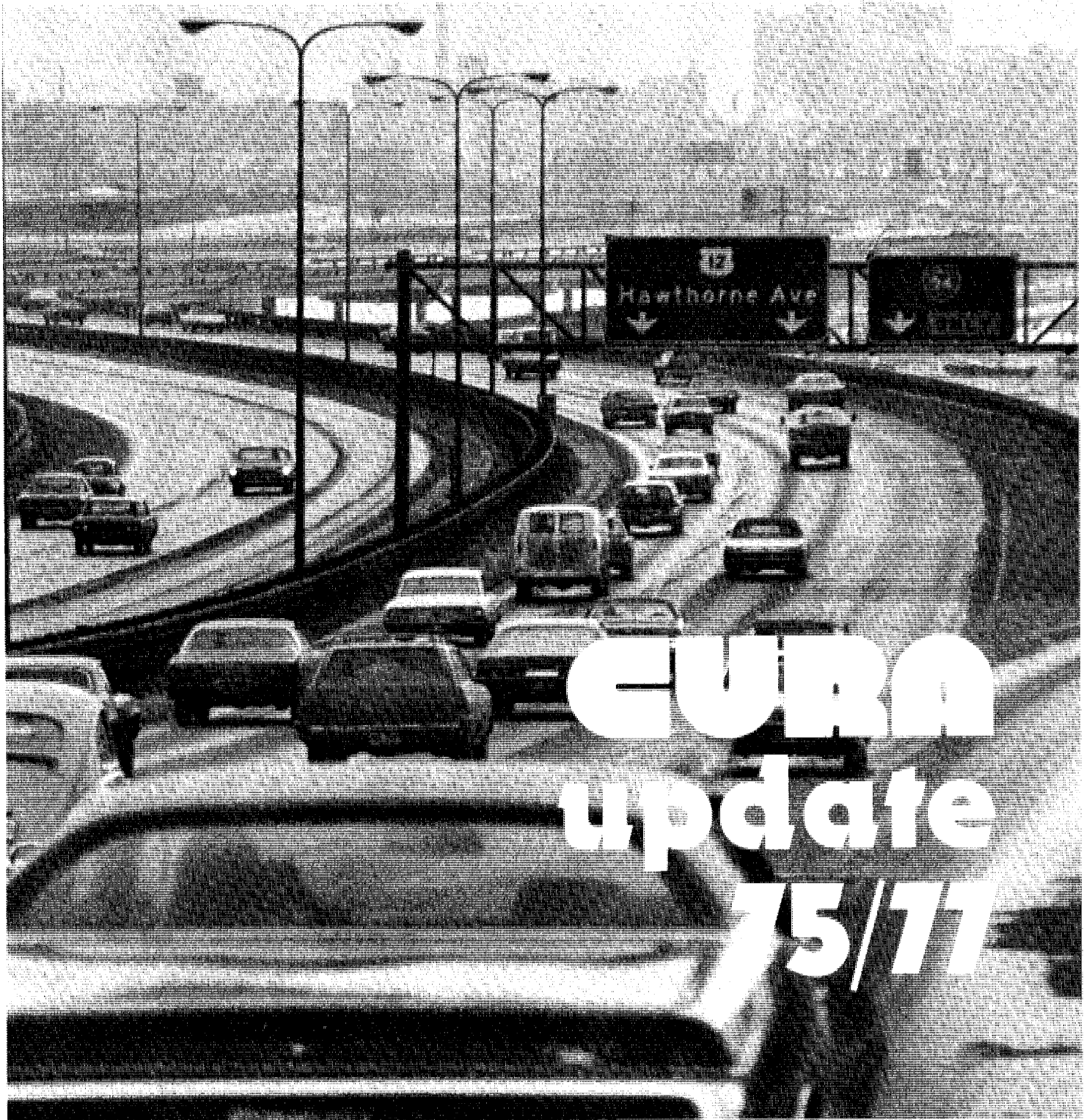


# CURA

# reporter

PUBLISHED BY THE UNIVERSITY OF MINNESOTA, CENTER FOR URBAN AND REGIONAL AFFAIRS



**CURA**  
**update**  
**75/77**

Since its inception in 1967, the Center for Urban and Regional Affairs (CURA) has maintained a continuous flow of projects. Many of the projects operate out of CURA-sponsored programs, others are individual projects administered through the CURA central office. The purpose behind all CURA programs and projects is three-fold:

- to allow the University of Minnesota to be more responsive to community needs by sponsoring projects that are cross-disciplinary; that address major problems in the community; that coordinate University and community resources; and that stimulate interactions between faculty, students and the wider community.
- to create experimental pilot projects that will help facilitate change.
- to spin-off successful projects into permanent operation with either community agencies or regular academic units in the University.

CURA projects are proposed both from the community and from within the University. CURA does not work independently but acts, rather, as a clearing house, making it possible for the University to serve as a pool of talent and resources for community groups and government agencies. Specific projects reflect the major problems facing our communities today, problems such as housing, urban transportation, community design, human services, land use, environment, and intercultural education.

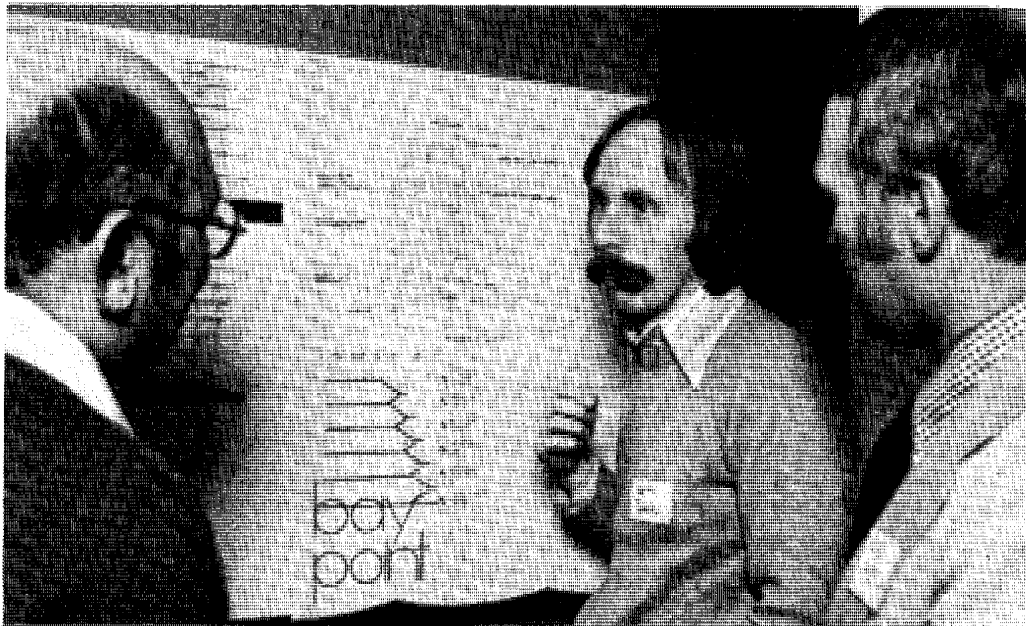
This issue of the *CURA REPORTER* presents a capsule view of CURA projects during the 1975-77 biennium. Earlier CURA projects were presented in summary form in CURA's seven-year report: *THE FIRST SEVEN YEARS: 1968-75*. Copies of that report are available from the CURA central office, 311 Walter Library, 117 Pleasant St. S.E., University of Minnesota, Minneapolis, Minnesota, 55455 (373-7833).

---

## COMMUNITY DESIGN

*under the direction of the Urban Education Center*

---



**Project Rediscovery** is a service and learning program which links students and faculty of the Collaborative Studio (School of Architecture and Landscape Architecture) with residents of small Minnesota communities. Students and residents engage in dialogue to help identify needs and potentials within the community and the region. Students then work on design proposals and receive critical review from townsfolk as well as faculty. Highlights of the full academic year effort are recorded in brochure or slide-tape form to serve as a continuing catalyst for the community.

In 1975-76, Project Rediscovery was supported in part by funds from the Minnesota State Arts Council and the National Endowment for the Arts. Centering in southeastern Minnesota, part of the year was spent studying the Root River valley towns with special emphasis given to recreation and redevelopment in Lanesboro. Wabasha was the focus for other projects including redevelopment of the downtown area, recreational development along the Mississippi river front, and studies of possible fair grounds sites. The project was assisted through collaboration with Agriculture Extension and their community agents. Teachers and students in the Wabasha public schools were involved, as well, through an environmental education program.

In 1976-77, Project Rediscovery continues to focus on southeastern Minne-

sota, now in the Lake Pepin area with a special focus on Lake City and Red Wing. Redevelopment, restoration, and recreation are continuing themes and an environmental education effort is again established, this time with one of the Red Wing public schools. Constructive interaction continues with government officials, citizens' committees, public school personnel, sixth graders, the news media, and the Red Wing Planning Commission.

**University Year for ACTION (UYA)** is largely supported by funds from the Federal ACTION Agency. The program provides students, individually or in small teams, with the opportunity to work as advocates for low income groups while earning a full year of academic credit. CURA has administered the program since 1973, working collaboratively with the Community Design Center, a non-profit advocacy design facility based in Minneapolis. Student participants are drawn from architecture, landscape architecture, interior design, and housing. During 1976 this program was spun-off to the University's Office for Special Learning Opportunities (OSLO) where it has been expanded to include more than thirty students from at least six additional disciplines. The program has expanded its sponsorship from one local non-profit agency to twelve and anticipates even further expansion in the 1977-78 academic year.

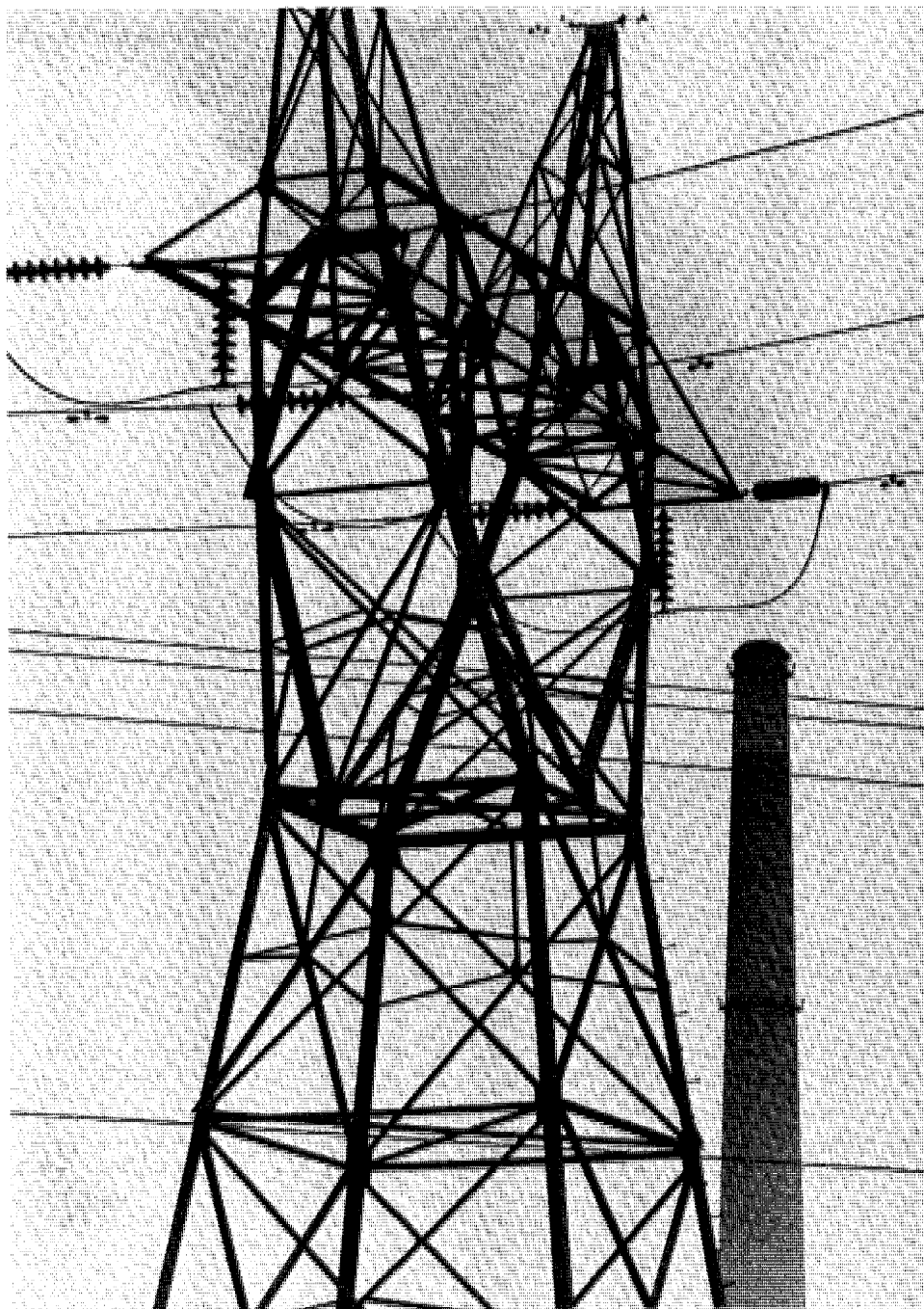
---

## ENVIRONMENT

*under the direction of the All-University Council on Environmental Quality*

---

**"Common Ground"** is an award-winning radio program begun in 1973 and produced through the University radio station, KUOM. The five minute daily programs present the facts and arguments involved in current environmental issues, and controversies. The program is offered free of charge to any radio station in Minnesota. About half (fifty) of Minnesota's radio stations broadcast Common Ground.



**University Bulletin: Courses and Programs in the Environment, Urban Problems, and Planning** is the first bulletin to describe related courses and programs throughout the University. Published every two years, it lists courses, programs, facilities, libraries, and other activities relating to the environment and urban planning. Community facilities are included along with programs from all of the University's campuses.

**Environmental Issues Seminar** meets monthly to discuss problems that will be facing Minnesota in the next ten to twenty years. University faculty and representatives from business and government in Minnesota are participating during the academic year 1976-77.

**Reports to the Public** is a proposed series of publications for the general public on environmental issues. The first report appeared in late 1975, presenting a study of *PUBLIC CONTROL OF PRIVATELY OWNED LANDS*. The report includes an account of the historical development of public restrictions and discusses some recent expansions of Minnesota's power to control private land use. Other possible topics in the series include sewage disposal and transmission lines.

**The Renewable Energy-Environment (TREE) Collection** is a small library housing papers, reports, documents, and books on various aspects of both the bio-energy and solar energy fields and their relationship to the environment. CURA assists in the maintenance of the collection.

**A Conference on Energy Information Services in the State of Minnesota** was held in October 1976. Members of the Minnesota Energy Agency, University faculty, environmental librarians, business people, and other government people gathered at the Spring Hill Conference Center to consider energy information services in Minnesota.

**Alternative Energy Sources: Technology and Applications for Minnesota** was a conference held in April 1976 coordinated through the Minnesota Energy Agency and sponsored by over forty local organizations. CURA prepared abstracts of the material presented in the conference and published these as a conference summary in late 1976.

---

## HOUSING

*under the direction of the Office of Planned Residential Development and Housing Research.*

---

**St. Paul Historic Preservation Program** began in the previous biennium and was completed at the end of 1975. Working with Old Town Restorations, CURA assisted in preparing grant applications to the National Endowment for the Arts and the Northwest Areas Foundation. These grants largely funded the historic preservation project. Close to 100 students and 6 faculty members from architecture, landscape architecture, geography, history, and American studies helped with the background research, assisted in the development of the plan, and aided in the preparation of a major report on the program in the historic hill area of St. Paul. CURA worked closely with local community groups, St. Paul housing and planning officials, the Minnesota Historical Society, the Minnesota Society of Architects, and many local architects and residents.

**Subsidized Private Multi-Family Housing** was a study undertaken for the St. Paul Housing and Redevelopment Authority. Residents (100%) were surveyed and intensive interviews conducted with management and administrative personnel in each of fourteen developments in St. Paul. The study concentrated on the attitudes of residents and management towards management, maintenance, project design, behavior of residents, and other aspects of life in the development. An overall report and separate reports for each of the developments were prepared for the Housing Authority. Faculty and graduate students from architecture, landscape architecture, and public affairs worked with the HUD area office, the Housing Authority, private sponsoring organizations, and the Metropolitan Council on the project.

**Peer Management in Multi-Family Housing** forms another study project emerging from the CURA study of St. Paul multi-family housing. There has been increasing concern locally and nationally about the quality of housing management in multi-family housing complexes. Over the past several years a good deal of varied experience with "peer" management of housing has developed in the Twin Cities through various schemes which involve residents directly in management policy and operations. This study will build on the earlier CURA study and involve detailed analysis of management experience in a number of metropolitan developments.

**Strategies for Conserving and Renewing Developed Urban Neighborhoods** will be analyzed and compared in a long term CURA study. Every indication is that in the future increasing dependence must be placed on existing neighborhoods and communities for our housing supply. Millions are already being spent on neighborhood conservation and residential rehabilitation yet the effect of varying tactics and strategies is poorly understood. This project will include a review of the literature on the subject, observation and analysis of programs that have been considered successful, and monitoring and evaluation of local programs in action. CURA will work with the State Planning Agency, the Metropolitan Council, other regional development agencies, municipal officials, private organizations, and businesses involved in conservation and rehabilitation.

**Financing Home Ownership** will be studied in a representative sample of home buyers. Despite the apparently skyrocketing costs of housing, more families bought houses last year than ever before and the proportion of housing that is owner occupied increases slowly but steadily. This project will study the actual source of mortgages and other loans, the amount and source of equity, and housing cost as it relates to income and other data. Interviews will be conducted with representative financial institutions as well as house buyers.

**Children's Living Environments** will be researched in a project to begin in the early summer this year. Apparently few multi-family developments are designed with a sophisticated understanding of the environmental needs of children. The CURA study of St. Paul multi-family housing revealed that children's rowdy behavior was the most pervasive and serious problem identified by residents. This project will be designed so that we may arrive at a better understanding of children's living environments.

**Post-War Housing Study** is now in process with the assistance of geography students. Small, usually tract built, single family houses were produced in abundance during the late 1940's and 1950's primarily in suburban metropolitan areas. They are being studied with special attention to the physical changes in the houses and neighborhoods, their occupancy since they were built, and the part they have played in the housing market.

---

## HUMAN SERVICES

*under the direction of the Office of  
Social Services Training Projects*

---

**Child Welfare Study** assessed the training needs of staffs in county welfare departments that are primarily engaged in child welfare activities. It is estimated that 75% of social service caseloads are primarily concerned with child welfare issues: adoption, child care, foster care, protection, and residential treatment, as well as the primary goal of preserving, rehabilitating, or reuniting families. Title XX has placed emphasis on local development of social service plans and accountability. Staff training programs have assumed increased importance, with almost a million dollars spent on training by Minnesota county welfare staffs in 1975-76. This project funded by a Title XX grant from the State Department of Public Welfare was intended to assist in Minnesota's state planning which is formulating new structures for integrating human services. The project assessed existing training programs in all Minnesota counties except the three urban counties (Hennepin, Ramsey, and

St. Louis). The final report, January 1977, focused on more effective ways to use available resources. Students in social work as well as social workers, allied staff, mental health centers, directors of county welfare agencies, and officials in public welfare cooperated in the child welfare study.

**Training Materials for Child Welfare** were developed over a two year period 1974-76. Two series of slide-tape shows were produced. "Caring for Children," under the Ramsey County Family Day Care Training Project, consists of eight slide-tapes on different aspects of early childhood and includes the award winning *CHILDHOOD AT RISK: HELPING YOUNG CHILDREN HANDLE HARSH REALITIES*. "If the Bough Breaks" under the Minnesota Child Welfare Training Project, is a series of five slide-tapes prepared as a training series for workers in child welfare and related fields. CURA worked under the auspices

of the Minnesota State Department of Public Welfare and the School of Social Work in producing the series. All of the slide-tapes have been distributed in appropriate offices and libraries throughout the state. Requests for these materials have been received from child care workers across the country.

**Mid-Life Careers for Women** was the subject of a workshop held in the Spring of 1975. The focus was on barriers for women in reentering the labor market. The workshop featured a report on occupational segregation by a nationally known economist and a profile of the economic status of women in Minnesota. A directory of metropolitan career counseling opportunities for women was prepared as an aid for those attending. The Higher Education Coordinating Commission and advisory representatives from private colleges and the various public education systems in Minnesota cooperated with CURA in making this gathering possible. The program was assisted by a grant from the Minneapolis Foundation.

**Public Forum Series on Title XX** was held in the spring of 1976. Two seminars dealing with the constraints and potential for planning social services in Minnesota were presented to public and private social service providers from all parts of the state.

**Our Clients: Our Selves** was the subject of a conference held in June 1976. Representatives from social agencies, county welfare systems, court services, and community alternative agencies brainstormed on how social services for women can be strengthened in Minnesota. A master bibliography, *WOMEN-A SOCIAL WELFARE PERSPECTIVE*, was prepared in conjunction with the conference.

**Public Forum Series on Funding Social Services in Minnesota** is being planned for the spring of 1977.

**Preparing Women for Paid Work Outside the Home** is projected as the subject of CURA's next major effort in the area of human services. CURA hopes to develop an instrument, based on role theory, for predicting the potential of women for paid work outside the home. In addition, CURA hopes to test the new social service responsibility for preparing women for this kind of work.

**Citizen Participation Models** may form the basis of another CURA study. Research design for this study is now underway.



---

## INTERCULTURAL PROGRAMS

*under the direction of the Office of Intercultural Programs*

---

**African Culture Project**, designed to dispel myths about Africa, operated during the 1975-76 school year in cooperation with Hallie Q. Brown House and Phyllis Wheatley Community Center. Neighborhood sessions were held weekly on African culture, concluding with an African dinner planned and prepared by University African students.

**Afro-American Newsletter** was developed with financial assistance from CURA. The quarterly publication is produced by the Department of Afro-American Studies.

**American Indian Resource Center** has been established in conjunction with the University's Department of American Indian Studies. The center includes a speakers bureau so that community groups can be provided with materials and presentations on the American Indian. Graduate and undergraduate students participate as speakers on various topics for school-age and adult audiences. The center is also evaluating audio-visuals and preparing a bibliography of resources.

**Bilingual Education Study** was prepared in cooperation with the American Indian Studies Department during the summer of 1976. The report was prepared in response to the federal Bilingual Education Act which offers funding to create bilingual education programs for Native Americans. Indian reservations were surveyed throughout Minnesota to determine which might apply for funding under the new act. A survey was also conducted of bilingual programs throughout the United States as an aid in preparing a "how to" manual for creating and operating bilingual education programs. The results have been distributed to Indian reservations in Minnesota.

**Chicano Studies** represents an ongoing liaison between the Office of Intercultural Programs (OIP) and the University Department of Chicano Studies. OIP has funded a community liaison worker in Chicano Studies. Objectives are to extend the department's services into the community via projects, programs, conferences, and lectures; to assist in student and staff recruiting; and to establish communications with existing Chicano community organizations. A survey of the needs of the Chicano community has been initiated and an attempt is being made to compile a list of all Chicanos in the metropolitan area. Chicano History Week, Spring 1976, was a part of this effort, funded by OIP and several other University groups as well as two Chicano organizations, the General Mills Foundation, and the Minnesota State Arts Board. During the 1976-77 school year, several University classes are being offered tuition free in the Chicano communities in West St. Paul and the North Side of Minneapolis. These were arranged through the Community Programs section of Continuing Education and Extension in response to the needs expressed in those communities.

**Correctional System Study** aimed at measuring by statistical methods the process by which an individual passes through the criminal justice system. It also sought to determine the effects of this process on the individual. The study was carried out with the cooperation of Minnesota correctional institutions (Stillwater, St. Cloud, and Shakopee) and their inmates.



**Ethnic Culture Centers** were partially funded for Black, Indian, and Chicano students at the University through the University's Office of Student Affairs.

**Growth of Minority Business in the Twin Cities** is featured in a study soon to be published by CURA. The report assesses minority business in the Twin Cities between 1969 and 1975 with particular attention to the effects that federal and local programs have had on business growth. Recommendations and a suggested model for community development are included.

**Minneapolis Urban League Street Academy** was evaluated through a questionnaire designed by a graduate student to determine the effectiveness of the Street Academy, especially as a form of alternative education for school drop-outs.

**A Minority Economic Cooperative** project surveyed local black business during 1975-76 in four areas (agriculture, computer, energy, and retail) to determine willingness to develop an economic cooperative. Twin City Minority Train and Exchange is a small group which organized as a result of the project. Project results will be available in June 1977.

**Minority Exchange Program** developed a proposal to establish a counseling office for minority students interested in studying abroad.

**Prepaid Legal Insurance Study** investigated the status nation-wide of systems for prepaying legal fees in a manner similar to those that prepay health expenses.

**Summit-University Adult Education Program** has prepared a proposal designed to help adults in the Summit-University area obtain a high school diploma. The average educational level in that area is less than the completion of high school, whereas the average level for the entire metropolitan area is one and a half years of college. CURA is working with Ramsey County Opportunities and Industrialization Center on the project. Also participating are the St. Paul Public Schools and the Martin Luther King Center.

**Variable Tuition Assistance Program** is designed to test new ways to deliver University education to the community. Since spring 1976, University courses taught on campus have been available to residents of South Minneapolis, the Near North Side of Minneapolis, and Summit-University St. Paul on a sliding tuition scale. Several methods of determining a "fair" tuition are being examined in this pilot project.

**Yard and Garden** was a demonstration project on the Near North Side of Minneapolis. Developed with the Agricultural Extension Service and Pilot City Regional Center, this Spring 1976 program provided information and limited supplies to residents interested in vegetable gardens, shrubs and trees, lawn care, and container gardens. Rakes, hoes, spades, forks, garden hoses, and a rotary plow were available along with expert advice on the care and feeding of yard and garden.

---

## LAND USE

*under the direction of the Office of Land Use Studies*

---

**Minnesota Land Management Information System (MLMIS)** has been an ongoing joint CURA-State Planning Agency project. A statewide information system about Minnesota's land has been developed and is now in use. Resource and cultural data items covering every forty-acre parcel in the state have been entered into the system. A complex computer system for spatial analysis and mapping of this data has been developed. Many short-term projects, including routing of high-voltage transmission lines, have been completed using these resources. Long-term planning projects,

such as the definition of prime and marginal farm lands, are also under way. Faculty and students from many University departments have been involved in the project as well as staff from state agencies and many local, regional, and federal agencies. During the next fiscal year MLMIS will be spun-off from CURA to become a service bureau within the State Planning Agency.

**Hennepin County Landfill Study** was initiated by the county Public Works Department. The department had seen an earlier MLMIS study report used to nar-

row choices for landfill site in Washington County. MLMIS staff used a map-overlay system to eliminate areas from consideration on a step-by-step basis. First, built up areas were removed. Then lands with potential soil, drainage, slope, and other physical problems were eliminated. The process of eliminating less-desirable lands continued until only a few candidate sites remained. A report was sent to the county. They will perform engineering studies on the remaining sites before making their final selection.

**Metropolitan Growth Trends** are being studied in a pilot project on 131 square miles in northwestern Hennepin County. Ten suburban municipalities are involved, ranging from areas built up at the turn of the century to areas that are still rural in nature. The study is looking at the land conversion process by mapping subdivisions and building permit data obtained through public offices. Development will then be compared with land type and location in an attempt to build a model describing the decision-making process of private developers. Findings will be used to evaluate land-use policies of public agencies.

**Wright County** is the subject of a related project now underway. Data on permits of all types are being collected from the county and from cities within the

county. Geographic identifiers will be appended to the permit data and maps showing where permits were issued will result. The purpose is to determine whether permits are an adequate device for locating changes in land use. Locations of changes in land use will be studied to determine the extent to which site characteristics determine development. The spill-over effect of land use controls in the adjacent metropolitan area will also be examined to determine the extent to which development skips over undeveloped land to rise in areas where controls are less stringent.

**Peat Deposit Maps** of northern Minnesota have been published as the result of an MLMIS staff project. Three maps show peat deposits categorized by energy potential. Maps of public ownership have been overlaid on these maps. Tables accompany the maps indicating the numbers of acres in each peat category, public ownership category, and the overlap of these two elements. The maps cover Koochiching County, the headwaters area to the west of Koochiching, and the southern Arrowhead Region (southern St. Louis and Itasca counties and Aitkin and Carlton counties). A graduate student has developed the Koochiching county area into a master's thesis evaluating the peat resources for their total energy potential.

---

## TRANSPORTATION

*under the director of the Urban Transportation Program*

---

**Transportation Seminars** are being held bi-weekly during the 1976-77 academic year. Topics are in the areas of transportation planning and operations. They have included such things as the 3M Vanpool Program, evaluating the energy impact of various transportation systems, transportation planning for the Twin Cities, and computerized traffic signal systems. The seminars are open to anyone interested in transportation.

**Minnesota's Intercity Bus Service Study** examined the estimated change in ridership that might result as a function of increased frequency of trips between various towns and cities in Minnesota. The study uses a standard model for estimating these changes and applies it to bus routes between the Twin Cities and surrounding cities in Minnesota and Wisconsin.

**Urban Transportation Collection** continues to be sponsored by CURA. The library contains a broadly based col-

lection of materials relating to transportation. Literature on problems ranging from urban transportation planning to intercity freight, passenger planning, and operations is included. The library, housed in the Experimental Engineering building, serves both the academic community and members of the transportation profession.

**A Transportation Advisory Group** has been formed. It consists of faculty members from a number of different departments, whose functions include: a) disseminating information to interested faculty and students as well as persons off-campus concerning course offerings, seminars, and special events in any area of transportation; b) furnishing information to interested faculty about potential research projects and research funding, and stimulating discussion concerning current and projected research; and c) advising CURA about investment in transportation and related activities.

---

## OTHER CURA PROGRAMS

---

**Ah-be-no-gee** aims at developing a community of child care and concern within the Native American community in Minneapolis. The project is administered through CURA and funded by the National Center for Child Abuse and Neglect (Department of Health, Education, and Welfare). Native American students are trained in family advocacy, to develop prevention services in child abuse and neglect, and to enhance the environment of the Native American community. The project now in its second year, is training fourteen graduate and undergraduate students. The students assist the Indian community where child protection cases are involved by helping residents to obtain full participation in public service agencies, by assisting public service agency personnel in coordinating services to the Indian community, and by providing a liaison between these agencies and the Indian community. The Ah-be-no-gee Center also provides traditional and family crisis counseling, a youth drop-in center with special events and weekend activities organized and supervised by the staff, emergency housing and emergency transportation for families in child crisis situations, youth counseling, and a 24-hour youth crisis service.

**Community-Based Residential Facilities** were studied by CURA during the summer and fall of 1975. The concept of caring for people within the community rather than in traditional institutions is an alternative that is becoming increasingly important. Group homes and half-way houses have sprung up in great numbers within our metropolitan community. They serve the retarded, the mentally ill, the chemically dependent, the criminal, the abandoned, and the delinquent. They serve both children and adults. CURA's study was designed to determine how many and what types of facilities are operating in the Twin Cities area and to investigate the process which determines the location of these facilities. Different types of community resistance to residential facilities were identified and the implications of this

resistance for further development were examined. The study results were published in a report in late 1975, organized to provide basic reference material for policy makers, program administrators, and community organizations.

Subsequent to publication, the study has been extended to include the regional scope of the problems involved in community-based facilities and the importance of community responsibility. Several local human services groups have requested consultations. A simulation game has been developed and a guide for community groups who wish to develop community-based facilities is projected.

**A Deer Hunters and Land Owners Attitude Survey** was conducted by CURA under contract from the state Department of Natural Resources. Attitudes of deer hunters and landowners were recorded as they related to the 1975 deer hunting season. Objectives of the study were to determine the amount of conflict between hunters and landowners and to learn citizen feelings about the 1975 season and the hunting regulations.

**Land Records and Computer Assisted Assessment** is the topic of a recently begun joint project operated by CURA and the state's Intergovernmental Information Systems Advisory Council. The year long study will develop specifications for systems that would be useful in Minnesota counties. The land records modules will be a model of the flows of information between all of the components of a complete land records system. The computer assisted assessment module will outline a package of algorithms useful for assessing all types of real property at any location in the state. The first six months will be spent reviewing the literature in both areas. From this list, several alternatives will be selected for further development in the second phase of the project. It is hoped that Minnesota will be able to adapt previously developed systems for use here. This work will terminate with the writing of a

request-for-a-proposal that would allow Minnesota to develop and implement the systems in several pilot counties.

**Local Government Training Service** is a new public, joint powers organization that provides training and consulting services to local public officials, employees, and employers in the state of Minnesota. Its members include the League of Minnesota Cities, the Association of Minnesota Counties, the University of Minnesota, the School Boards Association, State Planning Agency, and the State Department of Personnel. CURA cooperated and assisted in the development of the Government Training Service. The program is expected to eventually include all consumers and providers of local Minnesota government training. Government Training Service will be able to assess training needs systematically, develop new programs and techniques, and evaluate programs for its member organizations.

**Metropolitan Council Archives** is a CURA project seeking to determine whether an archive ought to be created which will detail the history and daily workings of the Metropolitan Council and, if so, where it ought to be located. A large and comprehensive collection of documents relating to the Council's formation is now being organized and efforts are underway to discover whether other documentary sources exist which could be combined with material already collected to form an archival base. There is a strong feeling among many concerned groups that because of the Council's uniqueness and prominence, some effort ought to be made to maintain a systematic record of its activities. Should a district Metro Council Archive prove impossible to organize the documents collected will then be deposited in a location which will permit wide public access—perhaps, the Minnesota Historical Society.

**Metropolitan Council Developmental History** is a CURA project that will be completed in September of 1978. Because the metropolitan area has been identified nation-wide as one that is quite progressive in initiating and implementing measures to cope with problems on a regional scale, CURA has felt that some attention to the background of this "progressiveness" might be instructive. This study will trace the current history of regionalism in the Twin Cities area, focusing on the rise of inter-governmental relations across the region, and particularly in the formation of the Metropolitan Council. The history will also discuss the regional climate for the arts, for sports, and for other broadly defined social forces.

**A Minnesota State Survey Research Center** feasibility study is underway. The center would be organized to service the survey research needs of University faculty and of state, local, and regional government agencies. The Center would relieve these groups of a substantial burden in the completion of research projects. Current work on the feasibility study involves surveying the potential users of such a center to solicit their feelings about the need for and value of such a center.

**Municipal Housing Policy in Minnesota** has been the subject of a study soon to be published by CURA. The report describes those programs and authorities (federal, state, and local) that municipalities in Minnesota can use in combination to create their own housing policy. Three case-studies—Bloomington, Robbinsdale, and St. Louis Park—illustrate municipal housing goals and how goals can be carried out through a combination of programs and authorities. The bulk of the work for this study was carried out by faculty and students in the School of Public Affairs with the cooperation of city officials in Bloomington, Robbinsdale, and St. Louis Park.

**Rapid Analysis Fiscal Tool (RAFT)** has been an ongoing CURA effort. An information system has been developed to support fiscal decision making. RAFT consists of a large base of fiscal data collected by several state agencies and a computer model of the state's current tax law. The models can be manipulated so that the impact of changes in the law (both on the individual and in total revenues) can be determined. The RAFT staff is currently using the system in work for four government-related agencies. The Legislative Tax Study Commission is looking at the effects of simplifying the state income tax forms. The State Planning Agency is studying the fiscal health of cities and, in a separate project, studying Minneapolis and St. Paul to try and isolate their unique fiscal problems. The Minneapolis Housing Authority is studying the impact of tax increment financing and is also examining the state's local government aid formula. The Citizens League uses RAFT every year to produce its comparative study of tax burdens in the Metropolitan area.

**Rural Services Delivery** has long been a concern of CURA. Support was provided for a graduate seminar in the Geography Department in the winter and spring of 1976. The seminar, conducted by a visiting professor from Sweden, studied rural services in the areas of education, health, and retail services for Minnesota's Aitkin County. Students

worked closely with service providers in the county. Descriptions of the current system of service delivery were written along with recommendations for improvement. A report is being prepared emphasizing the health delivery system. It will be distributed to citizens of Aitkin County and other interested persons.

**Vocational Assessment Clinic** has been established as a career counseling center at the University. Initial funding to test the value of and need for such a clinic came from CURA beginning three years ago. Since that time, 750 clients have used the clinic. It is open to the general public and staffed by advanced graduate students working in close contact with faculty in the Department of Psychology. The clinic helps people determine what types of work best suit them, both in terms of ability and interest. The tools of the clinic involve a broad range of psychological tests as

well as a closely monitored briefing and interview system. The clinic provides a service to citizens of the state while serving as an advanced training program for graduate students and an expanded research base for faculty. Follow-up inquiries with the clients to-date have shown that 90% are satisfied with the help they have received. CURA's role in the Vocational Assessment Clinic will terminate this year as the project is spun-off to self-sufficiency as a permanent part of the Department of Psychology. The Northwest Area Foundation provided funds to help bring this project through the transitional phase.

The photographs of power lines and a section of Hwy. 12 are by Henry Valiukas, courtesy of MECCA (Minnesota Environmental Control Citizens Association).

---

## CURA PUBLICATIONS 1975-76

---

### COMMUNITY DESIGN

*Lake Benton Community Study*, John Longbotham and Craig Wolfgram, Urban Education Center, September 22, 1975

*A Process for Rediscovery 1974-75: A Report of Activities on the Cuyuna Range in the Communities of Crosby-Ironton and Deerwood, Minnesota*, Urban Education Center.

*The Renville County Development Program—A Setting for Service-Learning*, Robert M. Morse, Urban Education Center, March 1976.

### ENVIRONMENT

*Alternative Energy Sources: Technology and Applications for Minnesota*, a conference summary, Center for Urban and Regional Affairs, December 1976.

*The Plutonium Economy: A Background Report*, Dean Abrahamson, All University Council on Environmental Quality, September 1975.

*Public Control of Privately-Owned Land: Approaching Land Use from the Legal Perspective*, All University Council on Environmental Quality, December 1975.

University of Minnesota Bulletin: *Courses and Programs in the Environment, Urban Problems, and Planning, 1976-78.*

### HOUSING

*Housing Rehabilitation Loan Programs in Minnesota*, James D. Fitzsimmons, Julia A. Nutter, and Kathleen A. Gilder, Office of Planned Residential Development and Housing Research, May 1975.

*Subsidized Private Multi-Family Housing in St. Paul, Minnesota*, a study based on resident and management attitudes, B. Warner Shippee and Carla Dickstein, Office of Planned Residential Development and Housing Research, May 1976.

### HUMAN SERVICES

*An Assessment of Child Welfare Training Needs*, Office of Social Service Training Projects, January 1977.

*Caring for Children*, a series of five papers on significant issues in child welfare, Rita Warren, Office of Social Services Training Projects, 1976.

*Caring for Children*, Ramsey County Day Care Training Project Slide Tapes, Office of Career Development, 1974-75.

*Ages and Stages*, the developmental relationship.

*Are You Listening?* parent, child, caregiver relationship.

*Because I Said So*, guiding behavior.

*Childhood at Risk*, helping young children handle harsh realities.

*Hurray for Me!* self-esteem in young children.

*Imagine That!* an introduction to creativity in children.

*Through Our Eyes*, cultural identity in child care.

*A Directory of Metropolitan Career Counseling Opportunities for Women*, Office of Career Development, 1975.

*Family Day Care: A Self-Portrait*, Office of Career Development, 1975.

*Final Report of the Ramsey County Family Day Care Training Project*, Office of Career Development, August 1975.

*If The Bough Breaks . . .*, Minnesota Child Welfare Training Project Slide Tapes, Office of Social Service Training Projects, 1975-76.

*Goodbye Again*, separation issues in child placement.

*If the Bough Breaks*, developmental needs in the first year of life.

*Like a Motherless Child*, toward understanding neglecting parents.

*She Was Always Hugging Me*, handling separation issues in child placement.

*The Theft of Childhood*, toward understanding abusive parents.

*Minnesota Family Day Care Training Project Final Report*, Esther Wattenberg and Sally Flax, Office of Career Development, June 1975.

## INTERCULTURAL EDUCATION

*Black History Focus, 1974-75*, Robert Gilmore and LeClair G. Lamber, Office of Intercultural Programs, 1975.

*Expand*, Office of Intercultural Programs Newsletter, Vol. I, Numbers 1 & 2, 1975 and Vol. II, Number 2, 1976.

## LAND USE

*A Comparative Analysis of the Land Use Laws of Minnesota and Selected Other States*, John Hoeft and William Borchers, Minnesota Land Management Information Systems, MLMIS# 5017, 1975.

*Data Manual for Itasca County*, Minnesota Land Management Information Systems, MLMIS# 3001A, 1975.

*Data Manual for Region 3, The Arrowhead Region*, Minnesota Land Management Information Systems, MLMIS# 3030, 1975.

*Differential Assessment of Farmland in Anoka County* (thesis), Gregg Larson, Minnesota Land Management Information Systems, MLMIS# 6001, 1975.

*DNR Land Use Classification Project Report*, Kirk Dahl, Minnesota Land Management Information Systems, MLMIS# 5018, 1976.

*ERTS-1 Applications to Minnesota Land Use Mapping*, Dwight Brown, et. al., Minnesota Land Management Information Systems, MLMIS# 5012A, 1975.

*Land Cover Change in the Mesabi Iron Range 1969-75*, Dwight Brown, et. al., Minnesota Land Management Information Systems, MLMIS# 5020, 1976.

*A Landfill Site Selection Study for Washington and Ramsey Counties*, Alan Robinette

and Dennis Asmussen, Minnesota Land Management Information Systems, MLMIS# 5015, 1975.

*Major Peat Resources in Minnesota* (maps), including:

Major Peat Resources of Minnesota

Peat Resources of Koochiching County, Minnesota Land Management Information Systems, MLMIS# 1004, 1976.

Peat Resources of the Northern Headwaters Region, Minnesota Land Management Information Systems, MLMIS# 1006, 1977.

Peat Resources of the Southern Arrowhead Region, Minnesota Land Management Information Systems, MLMIS# 1005, 1977.

*Mapping Twin Cities Minnesota Metropolitan Area Land Use With ERTS-1 Imagery*, Dwight Brown, Joseph Gibson, Deborah Pile, and Rob Warwick, Minnesota Land Management Information Systems, MLMIS# 5013, 1975.

*MLMIS Geocoding Procedures*, William J. Craig, Minnesota Land Management Information Systems, MLMIS# 4005, 1976.

*Monitoring Surface Water Dynamics in Minnesota*, Dwight Brown, Richard Skaggs, John M. Smiley, and Eliahu Stern, Minnesota Land Management Information Systems, MLMIS# 5014, 1975.

*Scenically Attractive Areas in the Arrowhead Region* (map), Minnesota Land Management Information Systems, MLMIS# 1003, 1976.

*Soils Information and Interpretive Procedures*, Jeffrey Anderson, Minnesota Land Management Information Systems, MLMIS# 4004, 1976.

*State Land Use Criteria: A Collection of Papers*, Center for Urban and Regional Affairs, August 1975.

*Wildlife Habitat Change and Seasonal Cultivation*, Dwight Brown, et. al., Minnesota Land Management Information Systems, MLMIS# 5012, 1975.

## OTHER

*Atlas of Minnesota Taxing Jurisdictions*, Jim J. Lee, Rapid Analysis Fiscal Tool (RAFT), November 1975.

*A City Examines Itself: The 1974 Duluth Attitude Survey*, Report No. 1, William J. Krossner, Center for Urban and Regional Affairs, February 1975.

*A City Examines Itself: The 1974 Duluth Attitude Survey*, Report No. 2, William J. Krossner, Center for Urban and Regional Affairs, May 1975.

*Community-Based Residential Facilities in the Twin Cities Metropolitan Area: Location and Community Response*, Alan S. Friedlob and Thomas L. Anding, Center for Urban and Regional Affairs, December 1975.

*CURA, The First Seven Years*, Center for Urban and Regional Affairs, September 1975.

*Field Experience Catalog*, a guide to field experience and service learning opportunities available to students of the University of Minnesota, Number Two, Office for Special Learning Opportunities (OSLO), 1975.

*Inventory of Inmate Education Programs by Minnesota Institutions of Higher Learning*, Edward J. Drury, Center for Urban and Regional Affairs, June 1975.



# reporter

VOLUME VII, Number 2    March 1977

The **CURA Reporter** is a publication of the Center for Urban and Regional Affairs, University of Minnesota. Comments and contributions are welcome. Judith H. Weir, Editor. Offices at 311 Walter Library, University of Minnesota, Minneapolis, Minnesota 55455.

---

CURA

311 Walter Library  
117 Pleasant Street S.E.  
University of Minnesota  
Minneapolis, Minnesota 55455

ADDRESS CORRECTION REQUESTED

---