

PRODUCTION OF EPP CANADA GEESE NEAR CAPE CHURCHILL IN 2005

Personnel: Field Investigators

David E. Andersen	Minnesota Coop. Fish & Wildlife Res. Unit, St. Paul, MN
Matthew Reiter	Minnesota Coop. Fish & Wildlife Res. Unit, St. Paul, MN
Timothy Pearson	Minnesota Coop. Fish & Wildlife Res. Unit, St. Paul, MN
Frank Durbian	U.S. Fish and Wildlife Service, Squaw Creek NWR, MO
Steve Gastfield	Iowa Department of Natural Resources, Decorah, IA
Steve Cordts	Minnesota Dept. of Natural Resources, Bemidji, MN
Rhonda Rimer	Missouri Department of Conservation, West Plains, MO
Garth Ball	Manitoba Conservation, Winnipeg, MB
David C. Fulton	Minnesota Coop. Fish & Wildlife Res. Unit, St. Paul, MN
Kevin Kotts	Minnesota Dep. of Natural Resources, Glenwood, MN
Jason Lewis	U.S. Fish and Wildlife Service, Big Oaks NWR, IN
Mike Widner	Arkansas Game and Fish Commission, Mayflower, AR
Vicki Trim	Manitoba Conservation, The Pas, MB

Collaborators and Cooperating Agencies

Frank Bowers	U.S. Fish and Wildlife Service, Atlanta, GA
Dale Caswell	Canadian Wildlife Service, Winnipeg, MB
Bob Reside	Parks Canada, Churchill, MB
Sarah Boyle	Parks Canada, Churchill, MB
Cam Elliot	Parks Canada, Churchill, MB
Brian Lubinski	U.S. Fish and Wildlife Service, Twin Cities, MN
Murray Gillespie	Manitoba Dept. of Natural Resources, Winnipeg, MB
Andy Raedeke	Missouri Dept. of Conservation, Columbia, MO
Jeff Lawrence	Minnesota Dept. of Natural Resources, Bemidji, MN
Steve Cordts	Minnesota Dept. of Natural Resources, Bemidji, MN
Steve Maxson	Minnesota Dept. of Natural Resources, Bemidji, MN
R. Andrew James	Arkansas Game and Fish Commission, Little Rock, AR
Steve Williams	Wildlife Management Institute, Washington, DC
Scott Walter	University of Wisconsin-Richland, Richland Center, WI
Steve Wilds	U.S. Fish and Wildlife Service, Twin Cities, MN
Guy Zenner	Iowa Dept. of Natural Resources, Clear Lake, IA
Ray Marshalla	Illinois Department of Natural Resources, Springfield, IL

Abstract:--Nest searching for Eastern Prairie Population (EPP) Canada geese was conducted on the Nestor One Study Area near Cape Churchill, Manitoba from 3-12 June 2005. A total of 69 Canada goose nests was found in initial searches of 732 ha of wetlands in 14 primary sample areas, 59 nests were located in initial searches of 6 coastal sample areas, and 44 nests were located during initial searches of 3 additional sample units south and east of primary units. Ten

nests were located subsequent to initial nest searches for a total of 182 nests located on the Nestor One study area in 2005. Nest density (unadjusted for observability) in the primary sample areas was 9.43 nests per 100 ha of wetland—the highest nest density recorded on the Nestor One study site since 1990, and >10 times higher than that estimated in 2004, a year of record low nesting density. Clutch size in 154 nests with eggs present when located averaged 3.79—slightly lower than the long-term mean of 3.87 (1976-2004) and near the clutch size expected based on the established relationship between mean clutch size and median hatch date. Estimated median hatch date was 28 June, and ranged from 20 June to 3 July 2005, with 23.8% ($n = 151$) of nests initiated on or before 23 May 2005 (the date used to define “bust” production). Nest success calculated as the average apparent success rate of nests active when first located during initial nest searching (0.81) and the 28-day survival of nests based on exposure days through nest location (0.51) was 0.66—slightly higher than the average estimated nest success of 0.63 observed during the 1990s. Based on these estimates of nest density, clutch size, and nest success, gosling production at Nestor One was approximately 22.95 per 100 ha of wetland—productivity similar to that observed in the early 2000s and mid-1990s, and slightly below the average of 33.48 goslings per 100 ha of wetlands observed during the period 1976-2004. Supplemental field investigations near the town of Churchill and the mouth of the Broad River were conducted and provided additional information about EPP Canada goose production in 2005.

In 2005, data on nest density and reproduction of Eastern Prairie Population (EPP) Canada geese were collected near Cape Churchill in order to:

- 1) obtain production indices for regulatory purposes;
- 2) aid in relating density, clutch size, and nest success of geese to long-term variation in weather, predation, and competition from snow geese, and
- 3) locate nesting Canada and snow geese as part of a study of factors affecting nest depredation.

Nest data were also collected near the town of Churchill and near the mouth of the Broad River—2 areas where nesting data have been collected in the past.

Methods

Data on numbers of nesting Canada geese, clutch sizes, and nest success were collected in 14 primary and 9 supplemental sample areas near Nestor One, 8 km south of Cape Churchill, Manitoba. Detailed methods and study areas were described by Didiuk (1980) and Walter (1999). Two survey crews searched sample areas for nesting birds and subsequently assessed nest fate of Canada goose nests located during surveys. The first crew conducted systematic searches of primary and supplemental sample areas from 3-12 June 2005. The second crew monitored nests located by the first crew and assisted in data collection related to assessing historic collared lemming (*Dicrostonyx richardsoni*) abundance, current arctic fox (*Alopex lagopus*) abundance, and anuran distribution and relative abundance. In addition, systematic nest searches were conducted near the town of Churchill (29-31 May 2005) and near the mouth

of the Broad River (2-7 June 2005) as part of ongoing research and monitoring efforts.

Results and Discussion

At Churchill, there were 593 heating degree-days in May 2005, considerably higher than the 807 heating degree-days recorded in May 2004, and near the long-term average for May (584, 1972-2004). Spring phenology at the Nestor One study area was close to average, with approximately 50% snow cover in early June. Field activities were planned to coincide with an average hatch at Cape Churchill—the first crew arrived in Camp beginning 1 June 2005, during early incubation. The estimated date of the earliest Canada goose egg laid on the study area in 2005 was 17 May, over 2 weeks earlier than in 2004.

Density of Nests:--A total of 69 nests was found in 2005 during initial searches of 732 ha of wetlands in 14 primary sample areas near Nestor One. Fifty-nine nests were located in searches of 6 coastal sample areas and 44 nests were located in 3 additional sample units (units 14E, 14S, and 8S) south and east of the 14 primary units. Ten nests were located subsequent to initial surveys for a total of 182 Canada goose nests located on the Nestor One study area in 2005. Nest density (unadjusted for observability) in the primary sample areas was 9.43 nests per 100 ha of wetland—the highest nest density recorded on the Nestor One study site since 1990, and >10 times higher than that estimated in 2004 (Table 1). Nest density estimated in 2005 was higher than that expected based on the long-term trend in nest density at Nestor One (Fig. 1).

Clutch Size:--Mean clutch size ($n = 154$ nests with eggs present when located) of Canada geese was 3.79 in nests located during initial nest searches at Nestor One (Table 2) in 2005; slightly lower than the mean clutch size observed at Nestor One during the period from 1976-2004 (Table 1) and near that expected from the established relationship between clutch size and median hatch date (Fig. 2).

Hatch Dates and Nest Success:--Ages of eggs were determined by flotation and candling in 152 Canada goose nests located during initial nest searching at Nestor One in 2005. Mean stage of incubation at the time of first visit was 8 days and median hatch date predicted from ages of eggs in the nest was 28 June, ranging from 20 June - 3 July, with 36 (23.8%) of 151 nests for which initiation date was determined being initiated on or before 23 May 2005 (the date used to define “bust” production). Predicted hatch date for 148 (97.4%) of 152 nests was within 5 days of the predicted median hatch date. Of nests found during initial nest searching ($n = 172$), 17 (9.9%) had been destroyed prior to being located. Nest success (28-day survival) calculated from the first day of incubation to the first nest visit was 0.507. This estimate is corrected for differences in the probability of discovery of active and depredated or abandoned nests (0.77 and 0.39, respectively; Walter 1996). Apparent nest success, calculated from termination visits (visits to the nest after eggs had hatched or the nest had been destroyed or abandoned) to nests that were active when first located, was 0.806 compared to 0.11 in 2000, 0.85 in 2001, 0.36 in 2002, 0.68 in 2003, and 0.15 in 2004. Nest success calculated as the average of apparent success rate of nests active when first located during initial nest searching (0.81) and the 28-day survival of nests based on exposure days (0.507) was 0.66—slightly higher than the average nest success of 0.63 observed during the 1990s (Table 1).

Production Forecast for 2005:-- Near average spring phenology at Cape Churchill apparently resulted in near average productivity of Canada geese at Nestor One in 2005. The median estimated hatch date of Canada geese at Nestor One in 2005 was 28 June—slightly later than the average hatch date during the period 1976-2004 (Table 1). The mean clutch size of 3.79 was near that predicted from the established relationship between breeding phenology and clutch size at Cape Churchill (Fig. 2). Nest density was 9.43 nests per 100 ha of wetland in the 14 primary survey areas at Nestor One—the highest recorded since 1990 (Fig. 1). Nest success was slightly higher than the average nest success observed during the 1990s (Table 1). Based on these estimates of nest density, clutch size, and nest success, gosling production at Nestor One was approximately 22.95 per 100 ha of wetland—production similar to that observed at Cape Churchill in the early 2000s and mid-1990s. Twenty-four percent of nests were initiated on or prior to 23 May, the date used in the EPP plan as indicative of a reproductive “bust.”

Fox density on the study area appeared to be relatively low, based on observations of foxes during field activities and indications of activity at dens. Only 1 (4.5%) of 22 dens visited exhibited evidence of fox occupation, and 8 (36.4%) dens exhibited evidence of intermittent fox use. Foxes were observed on the study area infrequently during nest searching. Lemming density appeared to be low on the study site, with few burrows, winter nests, droppings, and lemmings observed during nest searching.

Sixty-nine snow goose nests were located on the study area in 2005 (45 in the core study area). In 2001, 55 snow goose nests (32 in the core study area) were located during nest searching. In 2002, 6 snow goose nests were located in the core study area, and 8 snow goose nests were located in total. In 2003, 94 snow goose nests were located at Nestor One and in 2004, no snow goose nests were located on the study area. The number of snow geese nesting on the study area appears to be increasing, perhaps as a result of birds produced on the study area in 2001 returning as breeders in 2003, but a late year in 2004 with high snow cover through mid-June apparently resulted in reduced nesting or relocation by nesting snow geese at Nestor One. In 2005, snow geese nested at densities similar to those observed in 2001 and 2003.

Churchill and Broad River:--In 2005, we searched for nests both near the town of Churchill and near the mouth of the Broad River, in part to repeat surveys that had been conducted in the early 1990s and late 1980s. At the Broad River, we located 393 Canada goose nests, 359 of which were active when found. Apparent nest success was 0.77, and Mayfield nest success based on the period from discovery to fate, was 0.72. Clutch size averaged 3.68 ($n = 359$), with estimated median hatch of 24 June 2005. Canada goose nest density was 55.9 nests/100 ha—higher than the average nest density of 24.97 nests/100 ha calculated from nest searches of the same units from 1987 to 1989 and again in 1994 and 1995. In the surveyed area, we also located 150 lesser snow goose nests. Of 5 fox dens checked for occupancy, 1 exhibited evidence of fox occupation, and 1 was occupied by a wolf (*Canis lupus*).

At Churchill, we located 124 Canada goose nests, and we subsequently assessed fate at 45 nests. Apparent nest success was 0.87 and Mayfield nest success (based on survival from discovery to subsequent fate assessment) was 0.82. We estimated nest density at approximately 20 nests/100

ha, and clutch size averaged 3.80 ($n = 120$). Estimated median hatch date was 22 June 2005.

Literature Cited

- Didiuk, A.B. 1980. Summer movements and distribution of Canada geese near Cape Churchill, Manitoba. M.S. Thesis, Univ. of Wisconsin, Madison. 44pp.
- Walter, S.E. 1996. Aspects of Canada goose nesting ecology in northern Manitoba: Age, visibility, and Arctic fox predation. M.S. Thesis, Univ. of Wisconsin, Madison. 63pp.
- Walter, S.E. 1999. Nesting ecology of Eastern Prairie Population Canada geese. Ph.D. Thesis, University of Wisconsin, Madison. 204pp.

Table 1. Indices to production of Canada geese at Nestor One near Cape Churchill, Manitoba, 1976-2005.

Year	Median Hatch Date	Nests per 100 ha ^a	Mean Clutch	% Nest Success ^b	Goslings per km ²
1976	21 June	37	4.2	87	135
1977	15 June	33	4.3	97	137
1978	1 July	20	3.2	76	49
1979	30 June	26	4.3	85	95
1980	9 June	27	4.6	65	81
1981	23 June	21	4.1	57	49
1982	14 June	23	4.4	60	61
1983	10 July	4	3.2	51	7
1984	26 June	13	3.7	46	22
1985	21 June	16	3.4	45	24
1986	23 June	14	4.2	52	30
1987	30 June	5	3.4	62	11
1988	28 June	13	3.7	65	31
1989	29 June	10	3.5	42	15
1990	29 June	12	4.0	47	22
1991	23 June	9	4.1	69	24
1992	1 July	5	3.5	40	7
1993	16 June	8	4.0	42	14
1994	28 June	6	3.9	79	17
1995	30 June	5	3.9	63	18
1996	29 June	6	4.0	63	15
1997	28 June	6	4.2	87	20
1998	13 June	6	4.6	67	19
1999	15 June	3	3.9	72	9.3
2000	29 June	3	3.2	19	1.9
2001	18 June	8	4.5	83	30.2
2002	4 July	6	3.6	57	11.9
2003	25 June	8	4.5	63	22.2
2004	11 July	<1	2.2	24	0.4
2005	28 June	9.43	3.79	66	22.95
Mean ± SD	23 June ± 8	12.1 ± 9.3	3.87 ± 0.53	61.0 ± 18.3	33.4 ± 35.2

^aCalculated as the number of nests per 100 ha of wetland habitat in the 14 primary sample areas on the Nestor One study area.

^bCalculated as the average of 1) the probability of nest survival from the onset of incubation to the first visit (adjusted for visibility bias) and 2) apparent nest success from the first visit to final nest fate.

Table 2. Clutch size of Canada geese at Nestor One, Broad River and, Churchill, 2005.

1	2	<u>Clutch Size</u>		5	6	7	No. Destroyed Clutches ^a	Total No. Nests	Mean Clutch Size ^b
		3	4						
<i>Nestor One</i>									
5	18	34	53	36	7	1	17	171	3.79
<i>Broad River</i>									
16	43	81	123	79	15	0	36	393	3.68
<i>Churchill</i>									
5	12	26	40	33	4	0	3	123	3.80

^aThe number of nests that had been destroyed when they were first located.

^bCalculated from the number of eggs in nests that survived the interval between onset of incubation and our first visit.

Figure 1. Canada goose nest density estimated in primary sample areas on the Nestor One study area near Cape Churchill from 1976 through 2005. Nest density is reported as the \log_{10} of nests per 100 ha of wetland in the 14 primary nest areas searched at Nestor One. (Regression equation: $\text{LOG NEST DENSITY} = 62.07 - 0.03070(\text{YEAR})$; $r^2 = 0.5839$, $F_{1,28} = 39.29$, $P < 0.0001$).

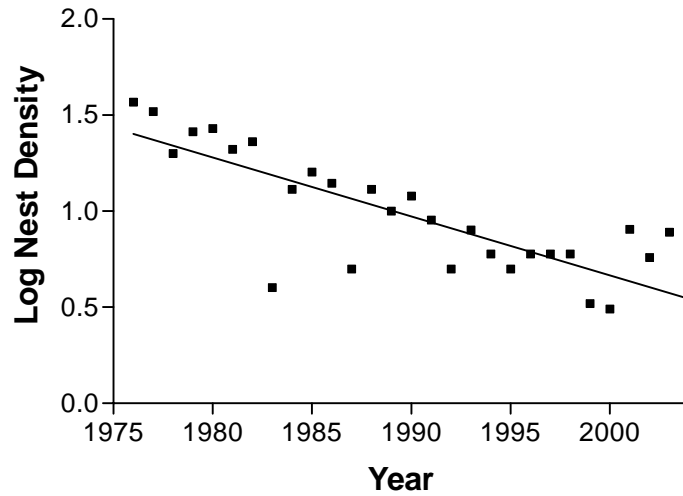


Figure 2. Relationship between mean clutch size and median hatch date for Canada geese nesting near Cape Churchill from 1976 through 2005. (Regression equation: MEAN CLUTCH SIZE = 12.65 – 0.04999(MEDIAN HATCH DATE [Julian date]); $r^2 = 0.548$, $F_{1,28} = 33.98$, $P < 0.0001$).

