

# Needs Assessment for Immigrant Groups in Rosemount

**Prepared by**

*Alex Kaizer, Jenna Campbell, Atticus Jaramillo, and Owen Hawkins*

*Students in PA 5281 – Immigrants, Urban Planning, and  
Policymaking in the U.S. (Instructor: Ryan Allen)*

**On behalf of**

*The City of Rosemount*

**With support from**

*The Resilient Communities Project*

**December 10, 2014**



This project was supported by the Resilient Communities Project (RCP), a program at the University of Minnesota that convenes the wide-ranging expertise of U of M faculty and students to address strategic local projects that advance community resilience and sustainability. RCP is a program of the Center for Urban and Regional Affairs (CURA) and the Institute on the Environment (IonE).



This work is licensed under the Creative Commons Attribution-NonCommercial 3.0 Unported License. To view a copy of this license, visit

<http://creativecommons.org/licenses/by-nc/3.0/> or send a letter to Creative Commons, 444 Castro Street, Suite 900, Mountain View, California, 94041, USA. Any reproduction, distribution, or derivative use of this work under this license must be accompanied by the following attribution: “Produced by the Resilient Communities Project at the University of Minnesota. Reproduced under a Creative Commons Attribution-NonCommercial 3.0 Unported License.”

This publication may be available in alternate formats upon request.

### **Resilient Communities Project**

University of Minnesota  
330 HHHSPA  
301—19th Avenue South  
Minneapolis, Minnesota 55455  
Phone: (612) 625-7501  
E-mail: [rcp@umn.edu](mailto:rcp@umn.edu)  
Web site: <http://www.rcp.umn.edu>

*The University of Minnesota is committed to the policy that all persons shall have equal access to its programs, facilities, and employment without regard to race, color, creed, religion, national origin, sex, age, marital status, disability, public assistance status, veteran status, or sexual orientation.*

## Table of Contents

Key Findings.....	3
Introduction.....	4
Summary of Demographic Information.....	5
Focus Group Design and Methodology.....	6
Why do Immigrants Move to Rosemount?.....	8
Children.....	9
Available Facilities – Developing Places of Belonging.....	11
Cultural Celebrations and Events.....	12
Transportation.....	14
Communication Problems.....	16
Conclusion.....	18
Appendix.....	21

## **Key Findings**

### **1) Lack of accessible information on activities for children**

Foreign born populations in Rosemount suffer from a lack of accessible information on activities for children. Moreover, almost all focus group participants expressed interest in having their children more involved in community activities, whether they be sports, seasonal festivals, or other recreation activities.

### **2) Lack of youth oriented facilities**

Many focus group participants noted that there is a lack of youth oriented facilities for children throughout Rosemount, making it difficult for their children to interact with native born children, and thus making it difficult for them to integrate into the community. Specifically, participants noted that lack of youth oriented facilities during the winter months.

### **3) Inadequate community spaces to hold cultural and religious celebrations**

Regardless of ethnicity, country of origin, or race, participants indicated that there is a lack of community spaces that could be used for cultural and religious celebrations. Consequently, most participants noted that they have to travel to Minneapolis or St. Paul if they do want to participate in culturally specific events.

### **4) Public transportation deficiencies**

All focus group participants indicated that current transportation options are limited and inadequate, making it difficult for them to commute to work and community events.

### **5) General communication issues**

Participants noted that both language and lack of internet access present significant communication issues. Many participants noted that this is frustrating because it inhibits them from participating in community events, seasonal celebrations, and makes it difficult for them to seek out activities for their children.

## Introduction

In recent decades, Rosemount, Minnesota has become an increasingly popular destination for immigrant populations, a change that has the potential to redefine the city's social dynamics. Whereas in the past, Rosemount was primarily a white suburban community, there now exist notable concentrations of foreign born populations, including Latino, Russian, East African, and Southeast Asian immigrants. However, this trend is not necessarily a unique situation in the United States because growing numbers of immigrants continue to move into suburban communities.<sup>1</sup> That being noted, both the demographic makeup of immigrants and the "context of reception" they face are unique to Rosemount, presenting a distinct set of practical and theoretical issues for foreign born populations who are hoping to integrate into the community.<sup>2</sup> Not only does the ability of immigrants to integrate hinge upon practical circumstances such as language, but this process also depends upon how they are received by and interact with the rest of the community. The purpose of this memo is to outline the unique context of reception that immigrants living in Rosemount face by presenting summations of their feedback that highlight the various barriers they face when attempting to integrate into the broader community.

In response to City staff's request to explore possible cultural integration strategies, we held a series of immigrant focus groups with the intent of using their feedback to guide the creation of a survey that can be distributed to immigrants throughout the community. City staff noted that they have relatively little contact with immigrants or knowledge of the barriers to integration they face. Therefore, we decided that conducting initial focus groups that acquire knowledge directly from Rosemount immigrants would be a useful first step toward creating a

survey that helps the City facilitate the successful integration of its immigrant population. We were interested in getting a general understanding of why the immigrants came to Rosemount, what they liked about the city, and what they thought could be improved, all of which underscore their ability, and perhaps willingness, to integrate into the community.

Subsequently, our focus group questions were aimed towards drawing out these perspectives and identifying issues that may or may not be common to the immigrant experience in Rosemount. We conducted three separate focus groups with Latinos, Russians, and a family from Togo. We identified several common barriers to integration, including (1) a lack of accessible information on activities for children; (2) a lack of youth oriented facilities; (3) inadequate community gathering spaces that can be used to hold cultural or religious celebrations; (4) public transportation deficiencies; and (5) general communications issues. In addition to our focus groups, we also conducted a basic spatial and demographic analysis of the foreign born population. In the following pages, we explore this information and use it to create some sample questions that we believe could be used in a more extensive survey.

## **Summary of Demographic Information**

There has been a notable influx of immigrants in Rosemount since 2000, which is reflected in the changing demographic composition of the City; all demographic information is further outlined in Table 1 provided in the appendix. From 2000 to 2013, the immigrant population in Rosemount rose from 368 (2.5 percent of the total population) to 2,037 (9.2 percent of the total population). This indicates a growth rate of 454 percent within this time period.

Rosemount's racial composition shifted from being 92.8 percent white to 82.1 percent,

reflecting the diversity of the new immigrant populations. In terms of race, the immigrant population in 2013 was made up of similar levels of blacks (5.6 percent), Asians (5.1 percent), and Latinos (5.3 percent), suggesting that at least three separate racial identities are represented in Rosemount's new immigrant streams. As of 2013, 18 percent of the City's immigrants were originally from Africa, 42.1 percent were from Asia, and 26.7 percent were originally from Latin America. Among the total Rosemount population over five years of age, 87.9 percent spoke English only at home, while 12.1 percent spoke a language other than English in 2013. Rosemount experienced a decline between 2009 and 2013 in the number of individuals who spoke English less than "very well" (from 3.3 percent to 3.1 percent, respectively). In general this indicates a high level of English fluency among foreign born populations living in Rosemount. In sum, these numbers illustrate that Rosemount is experiencing a rising pattern of diversity driven primarily by the arrival of recent immigrants.

### **Focus Group Design and Methodology**

On November 15, 2014 we conducted three focus groups at 360 Communities in Rosemount. The groups were composed of the three most prominent immigrant populations, including a Latino immigrant group, a Russian immigrant group, and a West African immigrant group. Both the Latino and Russian groups were comprised of about ten individuals from their respective communities and were all women. The West African group included a family with children who also provided feedback on their experiences in Rosemount. Each focus group session lasted approximately fifty minutes, and participants were provided with \$10.00 gift cards from Resilient Communities Project.

The data collected from the focus groups was entirely qualitative, and the product of dialogue between participants. While questions were formulated prior to the focus group, discussion was allowed to move freely around a variety of topics that the group may have found especially important. This flexibility allowed for the collection of relevant information that could be useful to various actors in the region while also ensuring that information was collected on a variety of topics. Since these were only focus groups with a limited number of people that did not represent all of the immigrant groups in Rosemount, the recommendations made by the groups represent a small sample of views in the community. While this means that we should be careful not to accept all feedback as definitive, it does provide a useful starting point for the creation of a more widely distributed survey.

A survey could be a beneficial tool for the City of Rosemount to use in the collection of additional information about the growing immigrant community. A future survey could go into greater detail on some of the specific issues mentioned in this report and those that are of particular interest to various departments in the City. Surveys are also beneficial in that they provide the opportunity for a more flexible way to provide feedback since people are not necessarily required to attend an event that may conflict with their schedule. Two difficulties that will need to be considered in creating a survey are those of accessibility and distribution. Accessibility refers to populations who may not be proficient in English and would need their surveys to be translated. Distribution refers to identifying the immigrant populations in Rosemount and then getting the survey in their hands. The city could partner with community groups, such as 360 Communities, to overcome the challenges of distributing the survey to as many immigrant residents as possible. Please see the attached appendix for a variety of



potential questions that Rosemount could consider utilizing in a future survey, but keep in mind that these are not exhaustive and future input will be required to determine how to prioritize issues of interest.

### **Why Do Immigrants Move to Rosemount?**

Focus group participants primarily identified Rosemount as an attractive location to raise a family because of its quiet and safe atmosphere, parks, and other amenities. Rosemount was identified repeatedly as a good place for children. Most of the participants were concerned with their family's upward socioeconomic mobility, and suggested that they felt that better opportunities were available in Rosemount compared to their home country, and perhaps even compared to other parts of the metropolitan area

Several of the focus group participants moved to Rosemount because of their ties to siblings or relatives who already lived in the area. Some participants moved into the area first, and were followed by additional friends and/or family members. Some of these ties may not have necessarily been between people who are very close. For example, one Latina participant stated that she moved to Rosemount because her husband's friends were in the area – not her own family. One of the Russian participants stated that her mother had lived in the United States and then returned to Russia with news that in the U.S., it is possible to get “free stuff.” She was referring to government aid and welfare programs which are not available in Russia. These observations suggest that economic incentives are important factors in encouraging family members to think about immigrating to the United States and illustrate how established immigrant networks facilitate the arrival of additional immigrants.

The responses of focus group participants indicated that before coming to the United States, they actively weighed choices about which location appeared to be better suited for their future needs. In some cases, the participants moved to Rosemount because their previous economic situation was undergoing hardship. They generally moved to attain better financial stability. Some family members had obtained a green card which appeared to encourage others to follow them in hopes that it would be easy to attain legal status for themselves. This suggests that immigrants are well aware that their legal status plays a substantial role in shaping their experience in the United States. If a family member can attain a green card or citizenship, it signals to them that they have a chance to do the same, although the question of whether different locales in the United States facilitate better or worse chances at obtaining a green card remains to be studied.

For many in the Russian focus group, the “future” appeared to be better in the United States than in their home country, although some aspects of life in the United States were not identified as being clearly superior. For example, a lack of public services, low quality of life for the impoverished, safety in the streets, and public drug use were identified as particularly important conditions in Russia that motivated immigration to the United States. These observations suggest that immigrants weigh a variety of tradeoffs by comparing their home country with the projected opportunity structures of their receiving country.

## **Children**

Nearly all of the focus group participants talked about how their children’s success and interests were the most important things for them to consider as parents. These participants

said that one of the most important reasons for why they moved to Rosemount was because of the high quality of the schools. Though most of the participants were very satisfied with the schools in Rosemount overall, they did mention that it would be helpful to have more school options, especially ESL courses and Family Schools. Family Schools offer parents an opportunity to learn English while their children play together in an early-childhood classroom setting. Currently, parents have to go to Apple Valley to find a Family School.

Each group that we interviewed also said that they believe it is important for their children be involved in school sports and other activities, like homework help, to keep them active and out of trouble. Some of the parents in our focus groups raised the concern that they did not know how to sign up their children for these school activities, and that they tend to receive sign-up information too late. Some of the participants we talked to also said that they would like to see their children involved in community-based sports leagues, even beyond the sports activities available through school, and especially in the summer months. Facilitating sporting events could be an extremely important way that Rosemount can encourage networking, solidarity, and strong social ties in general among new immigrant communities.

The focus group members particularly emphasized the importance of childcare, especially for young children. The participants were aware of a daycare called Anna's Bananas that will not expand into Rosemount because the owner feels that the community is not growing enough. The participants find this frustrating because they feel that daycare options in Rosemount are limited and too expensive. Most of the participants we talked to said that they cannot afford to put their children in the daycare that they think is the best. This was a

particularly important issue among participants, and is therefore a key avenue for the City to consider.

The overall well-being of children is extremely important to these immigrant families. They feel that Rosemount is a good place to raise children, but wish there were more options that would help stabilize their day-to-day schedules. The participants said that their children want to be involved in more sports and other activities as a way to build friendships and to expand their ties to the community. Some of the participants moved from countries that experience a lot of youth homelessness and crime. They therefore hope that their children can avoid this in Rosemount by keeping busy and off the streets. Facilitating the safety and wellbeing of immigrant families is an important consideration for the city because it is one of the areas that focus group participants most highly prioritized.

### **Available Facilities – Developing Places of Belonging**

The ability of immigrants to develop connections with other immigrants and native born members of their receiving community, to integrate in other words, largely depends on the various opportunities they have to ‘create places of belonging.’<sup>3</sup> Typically these places range from ethnic markets and restaurants to public parks and community spaces. Generally speaking, places of belonging are critical to integration because they allow immigrants to re-establish traditional cultural identities, and thus foster a new, placed-based identity partially rooted in the receiving community. However, a common theme that ran throughout all of the immigrant focus groups was the lack of youth oriented facilities and community gathering spaces; both of which provide opportunities to create places of belonging, enabling social

solidarity, networking, and general opportunities to advance economically. While insights regarding the lack of youth oriented facilities were very similar, perceptions of how the lack of community gathering spaces makes it difficult to maintain cultural and religious identities differed depending on the ethnicity of the focus groups.

In terms of recreational facilities, focus group participants ultimately indicated that Rosemount does not necessarily have all the amenities that they desire. The focus group participants reported that their children utilize the city's basketball courts very frequently in the summer and the hockey rink in the winter. However, one participant said that she wanted an indoor pool in Rosemount so her children can learn how to swim, especially because this would allow them to attend the indoor water-park in Burnsville. In addition, the participants were satisfied with the soccer fields at Rosemount High School, but also would like an indoor soccer field like the one in Burnsville. The focus group participants frequently said that they had to look outside of Rosemount to find facilities that their children want to use.

Outside of parks and recreation facilities, participants were generally satisfied with the various youth-oriented and appreciated cultural events currently provided throughout the City, but did voice concerns about the lack of culturally specific events. Focus group participants were very pleased with the Rosemount Haunted Woods Trail. They said it was a fun event for their whole family and that they are looking forward to this event next year. We asked participants if they also participated in Leprechaun Days, but they said they did not participate in this event as much. In general, focus group participants were satisfied with the current offering of cultural events and celebrations, but voiced concerns about the lack of culturally specific events.

## **Cultural Celebrations and Events**

Since the traditional customs of immigrant groups commonly differ from those of the receiving community, they often times use culturally specific places of worship, ethnic gathering spaces, and general community gathering spaces to hold cultural celebrations and create places of belonging.<sup>4</sup> Typically places of belonging and cultural celebrations act as a “bonding” mechanism within immigrant groups, and as a “bridging” mechanism between these groups and the rest of the community. That is, these places and celebrations allow immigrants to develop relationships with one another, and help them establish new, place-based identities partially rooted in the receiving community. In Rosemount, however, immigrants encounter limited opportunities to engage in cultural celebrations because there are few available facilities that can support these functions. Not only are immigrants unable to participate in the religious traditions commonly associated with their cultural celebrations, they also lack the general facilities needed to hold these celebrations. The following paragraphs outline the specific cultural celebrations that immigrants cannot engage in, and outline the difficulties of maintaining their cultural identities in general.

Each of the focus groups noted the difficulties of maintaining their cultural traditions and celebrations due to the lack of culturally-specific places of worship and community gathering spaces. Members of the Latino focus group indicated that there are few places of worship specific to their religious and ethnic denominations; however, they also said that they were still able to fulfill their religious needs through other places of worship. The Russian focus group indicated a strong reliance upon a “Russian church,” which enabled them to solidify their social ties and to obtain from one another the resources that they require on a regular basis.

All of the focus groups highlighted that it is difficult to maintain traditional ethnic identities since, to their knowledge, so few community gathering spaces exist that they can use to hold cultural celebrations. While the Latino focus group participants expressed this issue in terms of wanting to celebrate Cinco de Mayo and the Russian focus group stated the same sentiments in terms of their traditional New Year's celebration, the Togolese focus group noted that maintaining their cultural traditions is generally difficult, possibly due to the lack of co-ethnics throughout the Rosemount community. Once again, the absence of culturally relevant places of worship and community gathering spaces makes it difficult for immigrants to hold cultural celebrations, and to re-establish their traditional ethnic identities in the context of Rosemount.

Because of the insufficient quantity of relevant religious institutions and the general lack of community gathering spaces, participants in each focus group noted that opportunities to participate in traditional cultural celebrations primarily exist outside of Rosemount. The Latino focus group indicated that they typically have to travel to east St. Paul if they want participate in cultural celebrations such as Cinco de Mayo. In contrast, the Russian and Togolese focus groups noted that they mostly travel to Minneapolis for similar, culturally-specific celebrations. Moreover, all of the focus groups indicated that if they wanted food products specific to their culture, they have to travel into the Twin-Cities. In general, immigrants indicated that most opportunities to engage in culturally specific celebrations were found in the Twin-Cities. However, participants were not excessively frustrated by this reality, although the general consensus stated that it would be nice if Rosemount could support their cultural traditions and

celebrations by providing additional facilities. Doing so could boost social solidarity among their respective ethnic communities.

## **Transportation**

Adequate transportation is a vital need for any resident to be able to access resources, obtain employment, and transport dependents, such as children or the elderly, from one place to another. Some issues raised in the focus groups may be more easily addressed within Rosemount, but other issues may require work with outside groups, such as the Minnesota Valley Transit Authority or the Metropolitan Council, to help arrive at long-term, successful solutions. Transportation was discussed as having a substantial impact on residents' abilities to take advantage of labor market opportunities since poor access to transit makes getting to these destinations difficult, if not impossible.

One concern raised by focus group participants was that the transit websites were difficult to navigate and understand. Some participants mentioned that they would input their starting and ending destinations, only to be told by the program that the route was effectively impossible to accomplish within the given time constraints or that it would require multiple transfers and hours of transit. Clearer scheduling, options for translation, and a more streamlined website may benefit users who are new to navigating the MVTA and MetroTransit websites.

The lack of covered bus shelters in Rosemount was also brought up as an issue of concern. Many times the stops are on the side of the road with little or no coverage to protect someone from the elements while waiting for the bus. The Latino focus group participants



identified this as a particular problem during harsh Minnesota winters. A possible solution to this issue would be to work on identifying those bus stops that are more heavily used according to transit data and working to upgrade facilities to provide bus shelters with additional information on the bus schedule or potential connecting routes.

Although Rosemount is an outer-ring suburb, it is located within transit corridors that experience high-volume traffic. However, there are few bus routes that go to communities outside of Rosemount besides Bloomington. Participants discussed that even to get to Eagan they would often need to take a bus to the Mall of America transit area in order to transfer to a route that would take them to their destination. Working with MVTA or MetroTransit could lead to the creation of new routes that might provide access to Eagan to the northeast and Burnsville to the west without having to first transfer in Bloomington.

Many of the focus group participants reported owning or having access to a car for personal transportation. This was not because they did not want to use public transportation, but rather, they found public transportation to be inefficient and too inflexible for many of the activities they used it for (employment, school, shopping, etc.). An additional reason for feeling that personal cars were necessary is that public transit often is seen as an inefficient use of time. Having to transfer multiple times to get to work or any other destination means that it is possible to spend over two hours per day on public transportation, which is valuable time that could otherwise be spent with their family, working additional hours, or pursuing other activities.

## Communication Problems

The immigrants in our focus groups identified communication problems as a key area in which they need further support. They asked not only for services to help them learn the English language, but also for more effective means of sharing public information and keeping updated on community events. Additionally, translation of public documents into the native languages of the foreign born was appreciated when it occurred, although focus group immigrants suggested that translation of important forms was not always available to them.

Boosting language acquisition has been identified as a key means of increasing immigrant participation in labor markets and public participation. In the U.S., being unable to speak English prevents access to numerous potential avenues of socioeconomic mobility and public engagement. English as a Second Language (ESL) programs are an important means of encouraging integration of immigrants because they provide a context to facilitate the acquisition of the new language within a “safe” and embarrassment-free space in which it is considered alright to make mistakes and to learn at one’s own pace. Being without such a venue depresses the level of participation and engagement in the community that immigrants can accomplish – a Latina focus group participant suggested that one outcome is that generally, “they don’t want to speak up.” The focus group participants identified this as an essential aspect of their ability to learn English. Learning the language in a more public context and without an instructor who is trained to help develop language acquisition was identified as being very difficult. This sentiment may have been driven by feelings of embarrassment, fears of being punished, and a general sense of inadequacy stemming from the feeling of being judged by members of the native born population.

An extension of the standard ESL program could include a section that is specifically geared towards providing help with schoolwork for adults and children. Because it is harder to learn English at a later age, it is essential to not only focus on linguistic attainment among youth, but to support older members of the community in this regard as well. An ESL program set within a church or other neighborhood-level institution that facilitates solidarity within immigrant communities may also be a way forward. Some participants in the Russian focus group suggested that the low availability of childcare facilities in Rosemount made attending ESL classes difficult. Coupling ESL and childcare facilities in a community center, for example, could remedy this problem. What would make these services more salient to immigrants with very remedial English skills is for them to be led by bilingual speakers with fluency in both English and the native language used by the immigrants themselves. Relying upon a facilitator of an ESL class who speaks only English could have a negative effect upon immigrants whose skills are extremely rudimentary. Rosemount could actively seek out bilingual members of the community and rely upon them as facilitators of immigrant integration.

Focus group participants suggested that improvements could be made to current methods of communication that notify them about community events, school activities, requirements to apply to specific programs, and deadlines in general. One Latina participant said, "It is like a scavenger hunt to find information." The most common system that immigrants relied upon to become aware of community and school events was through fliers sent home with children from school. This method was described as being extremely frustrating and undependable. The children could easily lose the fliers, for example, or teachers could forget to distribute them with enough time ahead of the event to plan to attend it. Overall, the

participants suggested that they need more than just flyers sent home with their children to be informed about community events. A potential avenue to address these issues could involve the construction of a website translated into the most commonly-used languages that catalogs public events.

## **Conclusion**

Our main conclusion is that Rosemount should actively promote strong solidarity among members of the same ethnic group since it has the potential to boost mobility and economic stability, thereby lowering the costs imposed upon the City for providing public services. One Latina participant suggested that the city should figure out where the Latino population is and help them network among themselves. This was an interesting point, because it suggests that, counterintuitively, immigrants may not themselves know where other members of their own ethnic groups are. Members of the Latino and Togolese groups suggested that they view themselves as being widely dispersed throughout Rosemount and that ethnic enclaves are not significantly established. When asked if there are any ethnic meeting or community spaces, one of the Latinas remarked, "It would be nice to know!" By providing supporting frameworks and venues for immigrants to network, Rosemount could enable positive mobility and community stability.

Working with immigrants to assess if their needs are being met in Rosemount is an essential step toward facilitating their successful integration. Moreover, Rosemount has an interest in ensuring that new immigrant arrivals can attain positive economic mobility. The City should acknowledge that a lack of economic opportunities for the immigrant community has the

potential to translate into areas of concentrated poverty, which generate lowered property values and incentives to commit crimes.

The engagement of immigrants within formal business networks and paths toward economic mobility, as facilitated by supporting institutional structures and effective public services, will translate into better outcomes for Rosemount as a whole, vibrant community. The varied responses as to why immigrants chose Rosemount for their new home suggest that they do not possess a unified set of interests. That being noted, the insights provided in this memo outline a framework for future inquiry on the needs and desires of immigrants living in the community. In sum, although many in the focus groups shared similar perspectives on why they moved to Rosemount, an additional survey could shed light on the nuances of how the City can help immigrants attain what they were looking for by moving here.

## Appendix 1: Potential Survey Questions

### Possible Demographic Questions of Interest:

1. Race/ethnicity?
2. What is your country of origin?
3. Do you have access to your own personal automobile?
4. How long have you lived in Rosemount? In Minnesota?
5. Do you have children in your household? If so, how many?

### Possible Thematic Questions of Interest:

1. **On a scale from 1 to 7, how welcomed do you feel as part of the Rosemount community, where 1 represents feeling very unwelcomed and 7 represents feeling very welcomed?**

1	2	3	4	5	6	7
Very Unwelcomed	Neither Welcomed nor Unwelcomed			Very Welcomed		

2. **On a scale from 1 to 7, how satisfied are you with public transportation within Rosemount and as a connection to other areas in the metro area?**

1	2	3	4	5	6	7
Very Unsatisfied	Neither Satisfied nor Unsatisfied			Very Satisfied		

**3. On a scale from 1 to 7, how satisfied are you with the availability of community gathering space in the Rosemount community, where 1 represents being very unsatisfied and 7 represents being very satisfied?**

1	2	3	4	5	6	7
Very Unsatisfied			Neither Satisfied nor Unsatisfied			Very Satisfied

**4. Do you have specific comments in regards to your satisfaction with public transportation?**

[Leave space for people to write in responses.]

**5. What cultural celebrations do you wish the City would promote?**

[Leave space for people to write in responses]

**6. What is the greatest barrier to participating in community activities such as youth sports leagues, Leprechaun days, or Haunted Trails?**

- A. Cost
- B. Language
- C. Lack of information
- D. Lack of transportation
- E. None of the above

[Leave space for people to write in responses if they please]

**What kind of recreational activities do people in your household enjoy? (could have a set of 10 activities with instructions to check all that apply, plus an area to write in ideas)**

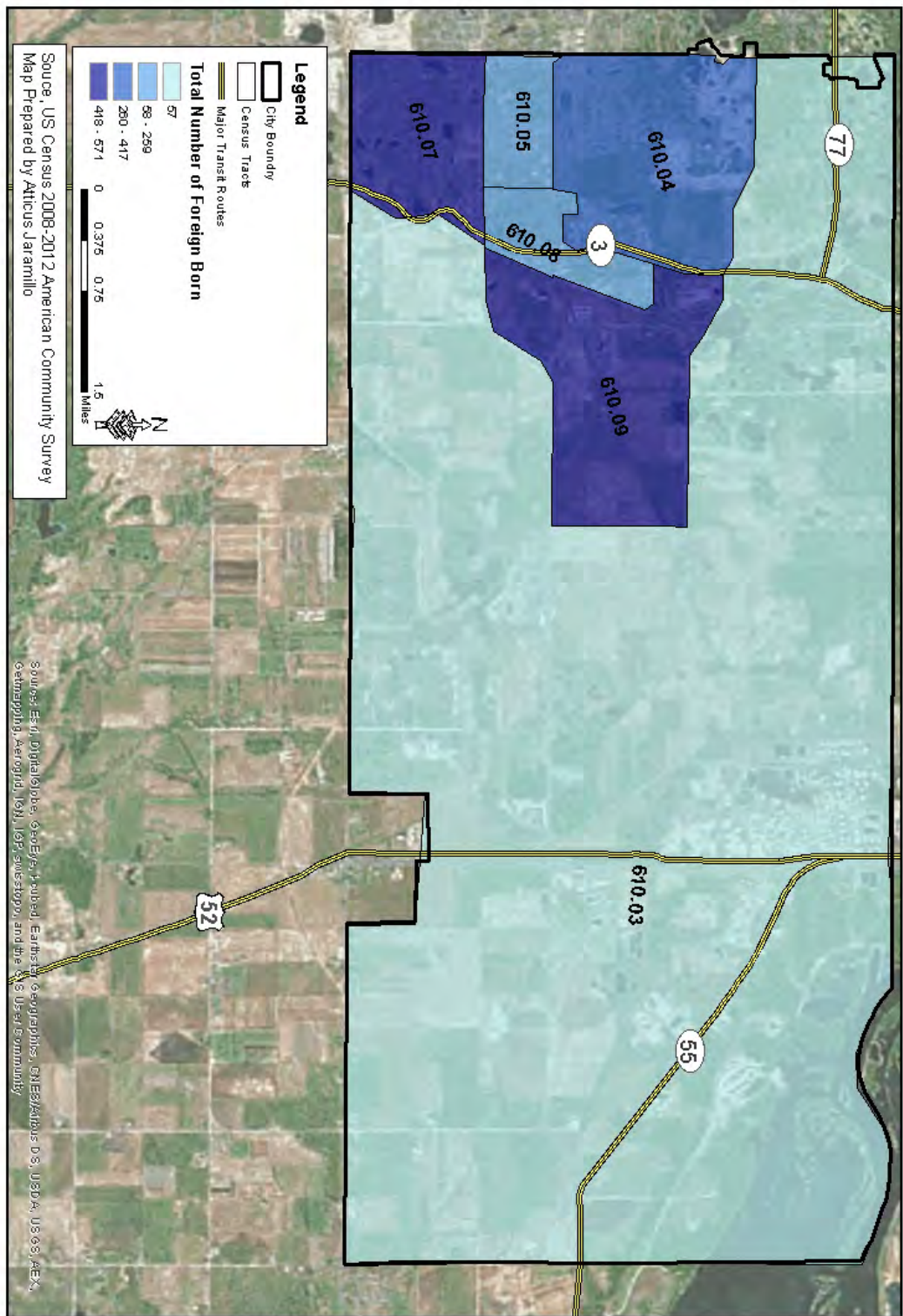
## Appendix 2: Social Characteristics – Rosemount, Minnesota

Table 1. Social Characteristics of Rosemount, 2000-2013.	2000		2009		2013	
	Number	Percent	Number	Percent	Number	Percent
Total population	14,615	100	20,710	100	22,131	100
Native	14,247	97.5	19,037	91.9	20,094	90.8
Foreign born	368	2.5	1,673	8.1	2,037	9.2
Naturalized citizen	174	1.2	656	39.2	1,802	53.1
Not a citizen	194	1.3	1,017	60.8	955	46.9
Race & Ethnicity						
White	13,564	92.8	18,093	87	18,177	82.1
Black or African American	297	2	985	4.7	1,251	5.6
American Indian or Alaska Native	44	0.3	42	0.2	21	0.09
Asian	311	2.1	1,022	5	1,129	5.1
Native Hawaiian and Other Pacific Islander	0	0	0	0	0	0
Hispanic or Latino Origin	268	1.8	450	2.1	1,168	5.3
Some other race	199	1.4	265	1.2	544	2.4
Region of birth of foreign born						
Europe	126	34.2	203	12.1	153	7.5
Asia	90	24.5	781	46.7	857	42.1
Africa	30	8.2	398	23.8	366	18
Latin America	65	17.7	220	13.2	543	26.7
Language spoken at home						
Population 5 years and over	13,263	100	18,821	100	20,479	100
English only	12,843	96.8	17,227	91.5	18,010	87.9
Language other than English	420	3.2	1,594	8.5	2,469	12.1
Speak English less than 'very well	177	1.3	629	3.3	637	3.1

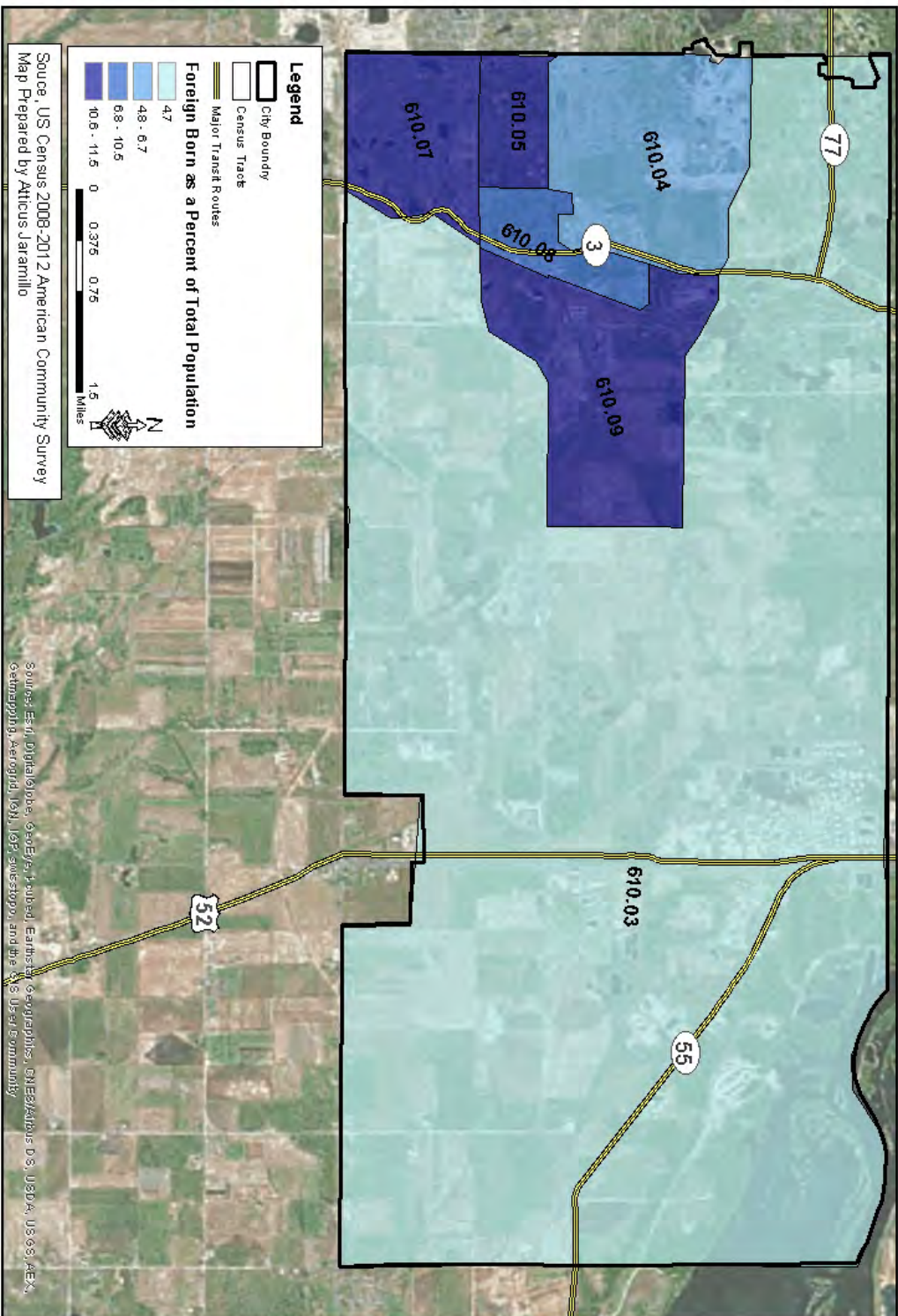
Source: US Census Bureau 2000 Census; 2009 ACS 5 Year Estimates; 2013 ACS 5 Year Estimates



**Rosemount, Minnesota: Spatial Dispersion of Foreign Born Population by Census Tract**



# Rosemount, Minnesota: Spatial Dispersion of Foreign Born Population by Census Tract



---

<sup>1</sup> Wilson, Jill H. and Audrey Singer. 2011. *Immigrants in 2010 Metropolitan America: A Decade of Change*. Washington, DC: Brookings Institution. Figure 2: Residence of the Foreign-born Population in the United States, 1980-2010.

<sup>2</sup> Ellis, Mark and Gunnar Almgren. 2009. "Local Contexts of Immigrant and Second-Generation Integration in the United States." *Journal of Ethnic and Migration Studies* 35(7): 1059-1076.

<sup>3</sup> Main, Kelly and Gerardo Francisco Sandoval. Forthcoming. "Placemaking in a Translocal Receiving Community: The Relevance of Place to Identity and Agency." *Urban Studies* 52(1): 71-86.

<sup>4</sup> Main, Kelly and Gerardo Francisco Sandoval. Forthcoming. "Placemaking in a Translocal Receiving Community: The Relevance of Place to Identity and Agency." *Urban Studies* 52(1): 71-86.