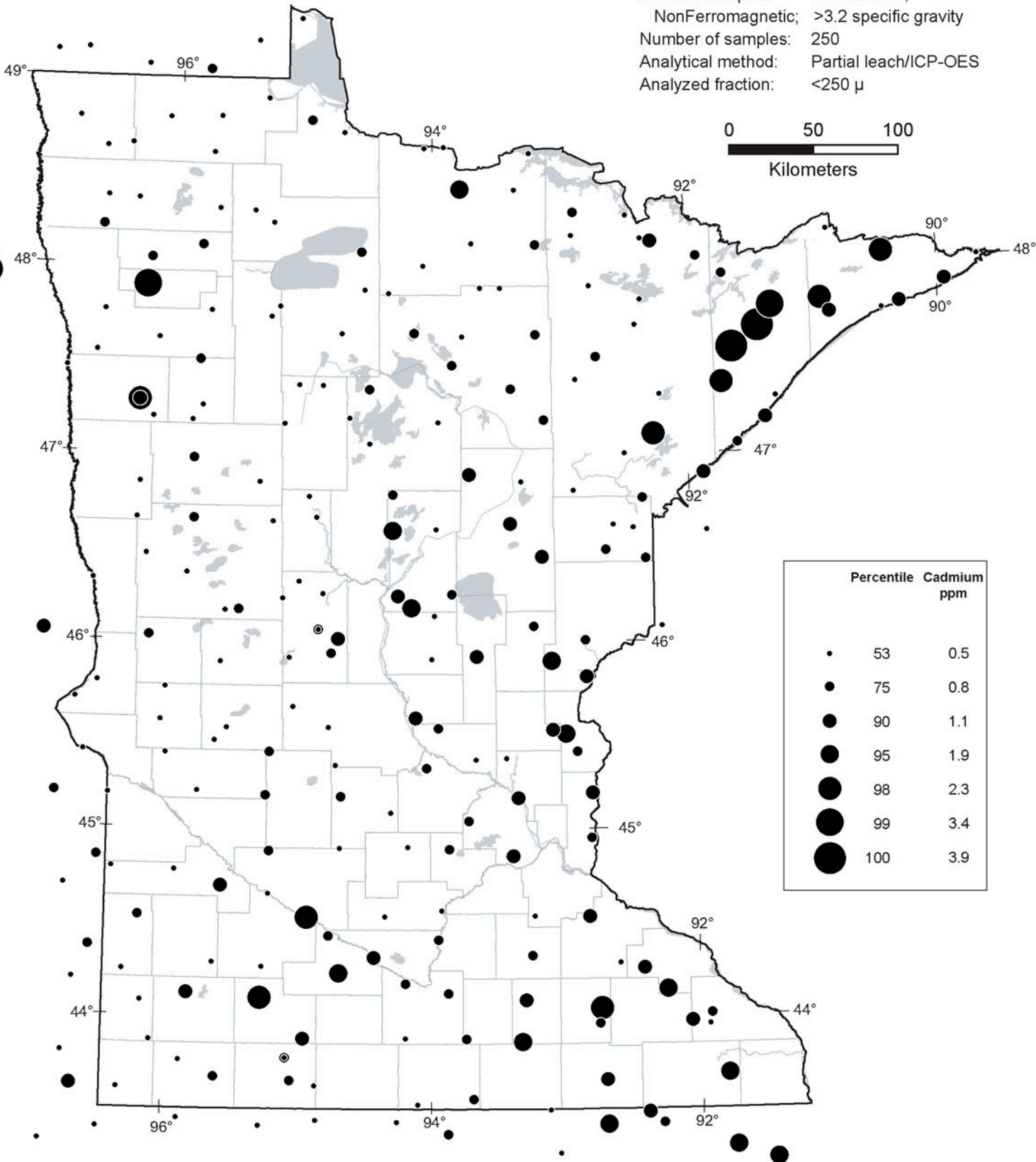


Appendix; Geochemistry of the heavy mineral fraction; ICP; maps

Soil Geochemical and Indicator Mineral Reconnaissance Survey of Till in Minnesota

Cadmium

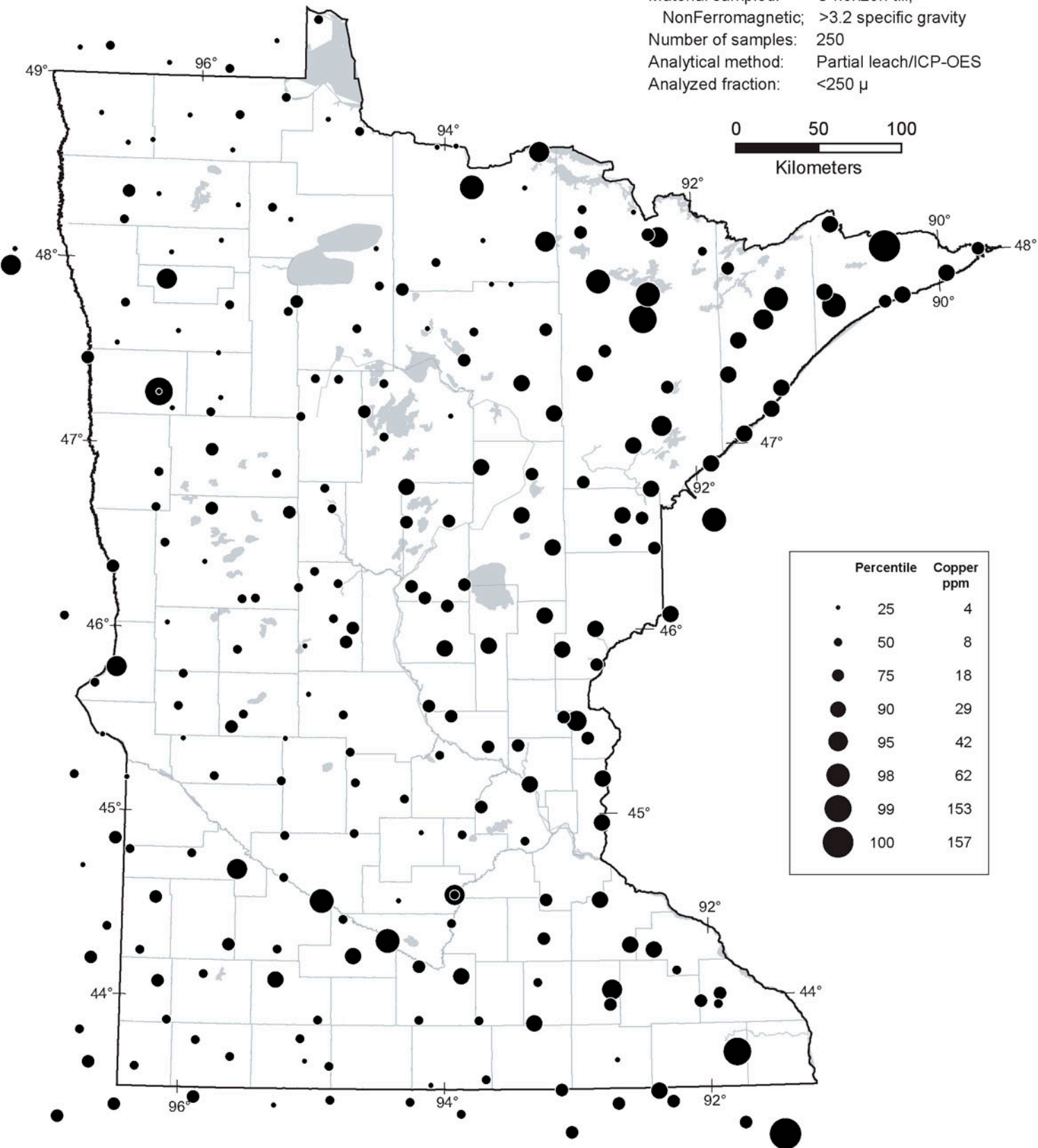
Year of collection: 2004
Material sampled: C horizon till;
NonFerromagnetic; >3.2 specific gravity
Number of samples: 250
Analytical method: Partial leach/ICP-OES
Analyzed fraction: <250 μ



Soil Geochemical and Indicator Mineral Reconnaissance Survey of Till in Minnesota

Copper

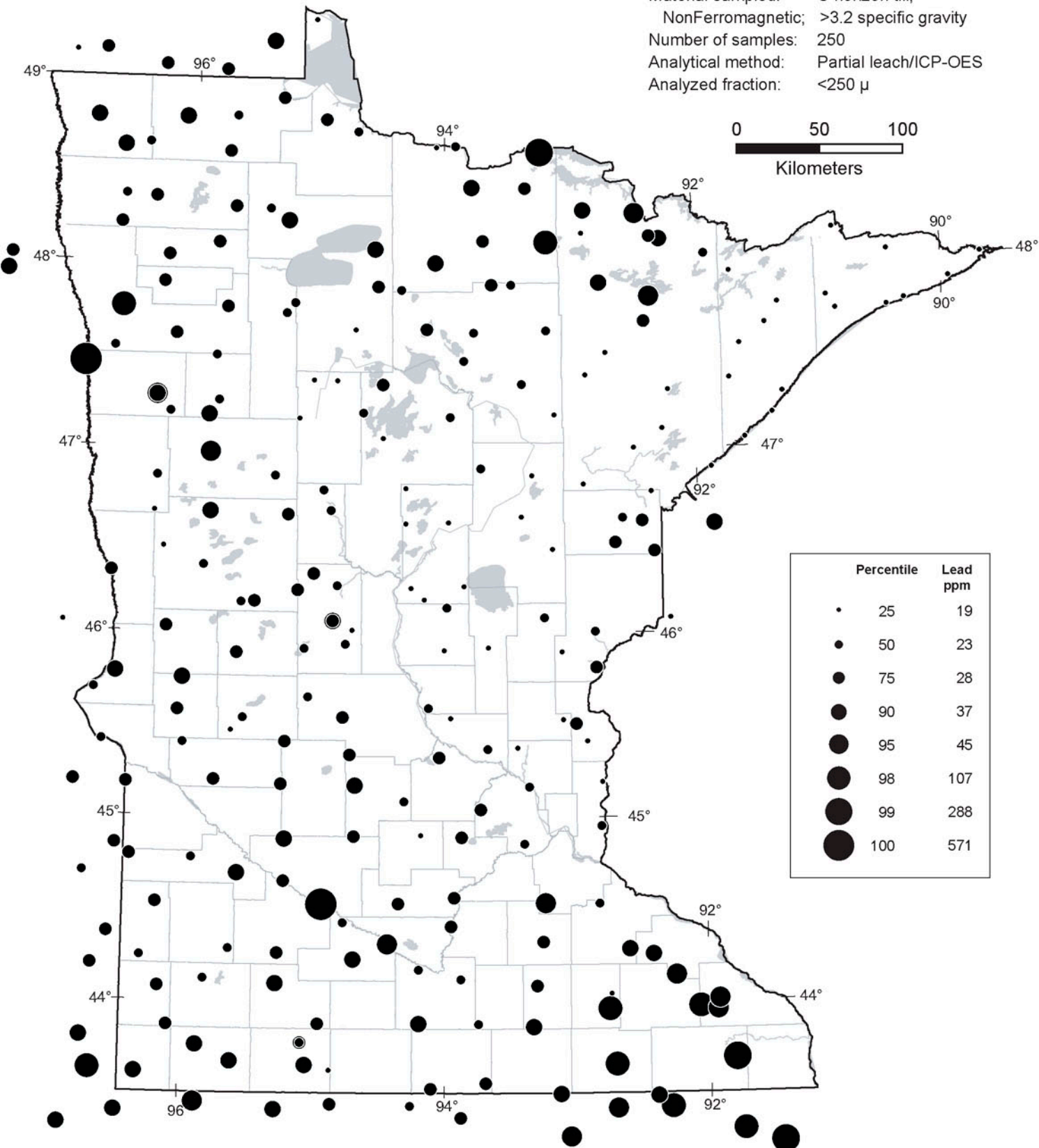
Year of collection: 2004
Material sampled: C horizon till;
NonFerromagnetic; >3.2 specific gravity
Number of samples: 250
Analytical method: Partial leach/ICP-OES
Analyzed fraction: <250 μ



Soil Geochemical and Indicator Mineral Reconnaissance Survey of Till in Minnesota

Lead

Year of collection: 2004
Material sampled: C horizon till;
NonFerromagnetic; >3.2 specific gravity
Number of samples: 250
Analytical method: Partial leach/ICP-OES
Analyzed fraction: <250 μ



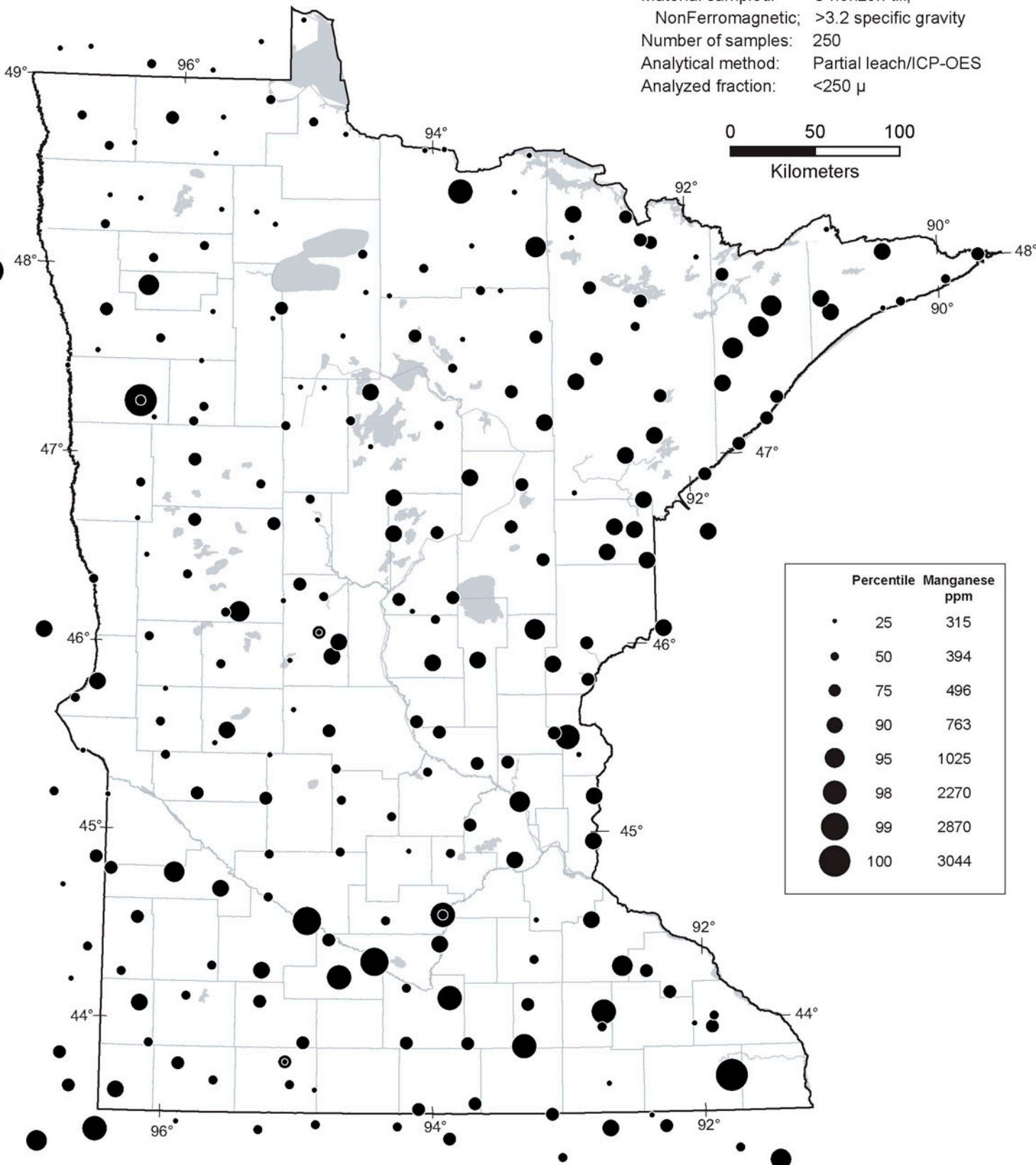
Percentile	Lead ppm	
•	25	19
•	50	23
•	75	28
•	90	37
•	95	45
•	98	107
•	99	288
•	100	571



Soil Geochemical and Indicator Mineral Reconnaissance Survey of Till in Minnesota

Manganese

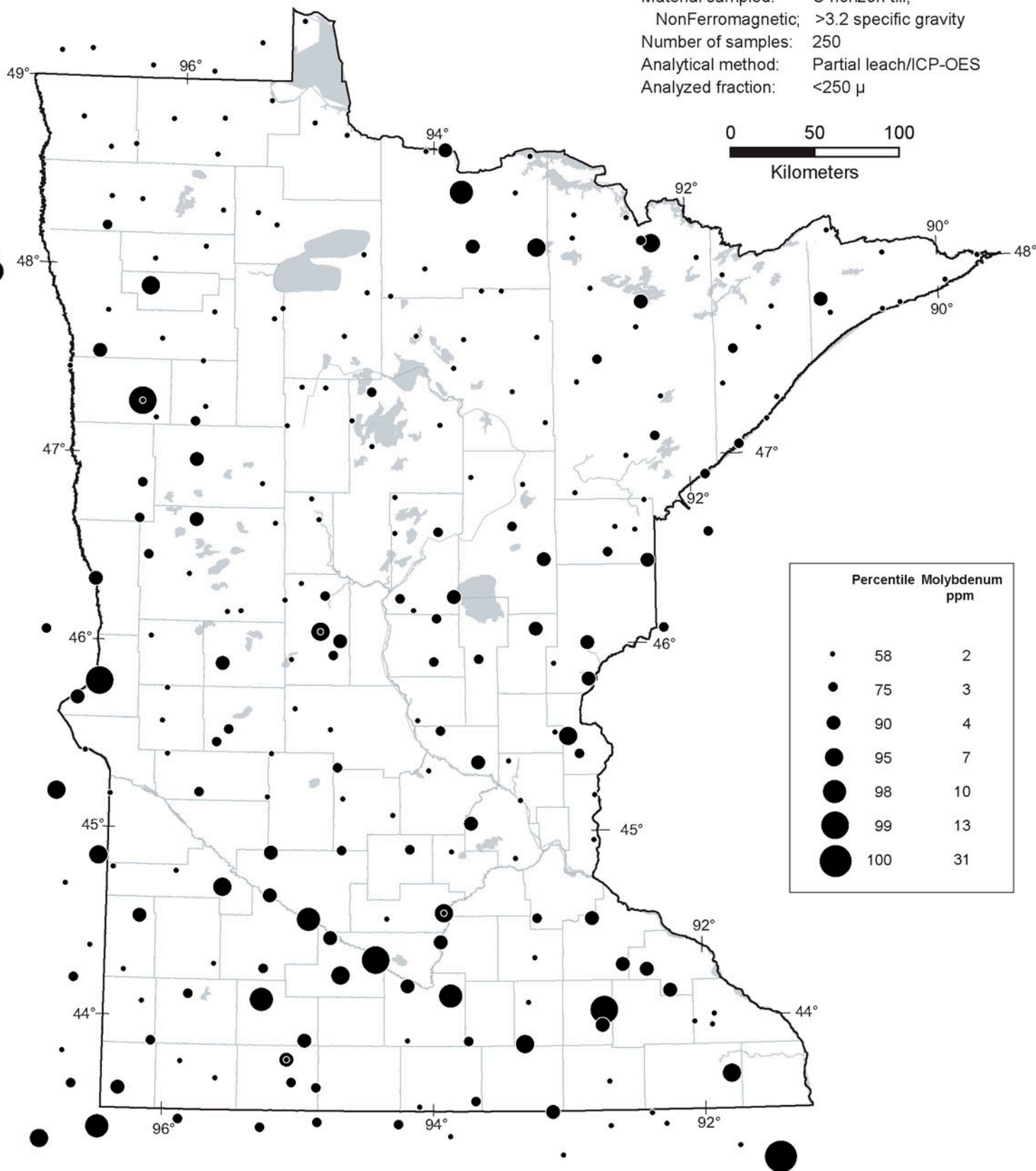
Year of collection: 2004
Material sampled: C horizon till;
NonFerromagnetic; >3.2 specific gravity
Number of samples: 250
Analytical method: Partial leach/ICP-OES
Analyzed fraction: <250 μ



Soil Geochemical and Indicator Mineral Reconnaissance Survey of Till in Minnesota

Molybdenum

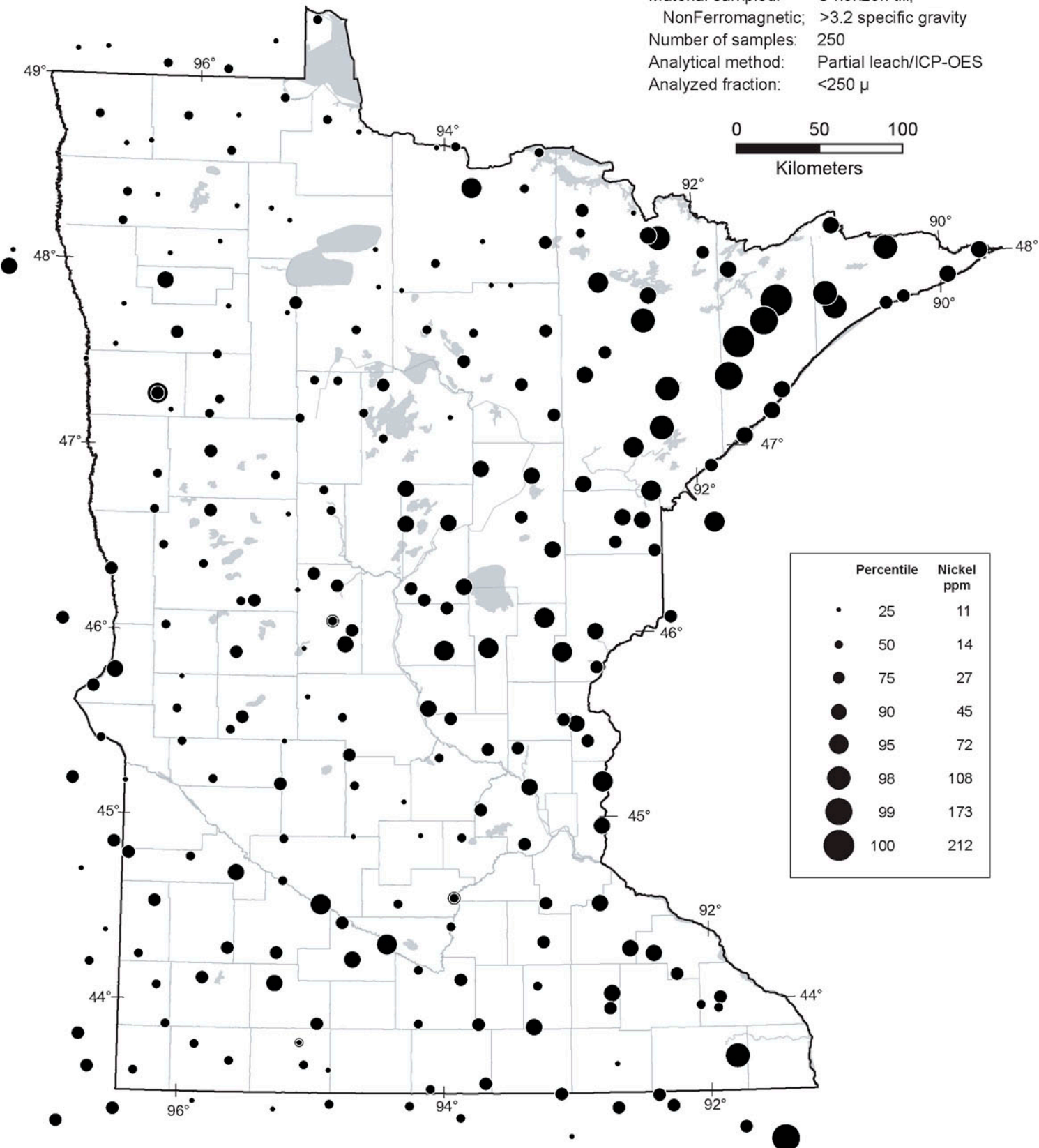
Year of collection: 2004
Material sampled: C horizon till;
NonFerromagnetic; >3.2 specific gravity
Number of samples: 250
Analytical method: Partial leach/ICP-OES
Analyzed fraction: <250 μ



Soil Geochemical and Indicator Mineral Reconnaissance Survey of Till in Minnesota

Nickel

Year of collection: 2004
Material sampled: C horizon till;
NonFerromagnetic; >3.2 specific gravity
Number of samples: 250
Analytical method: Partial leach/ICP-OES
Analyzed fraction: <250 μ



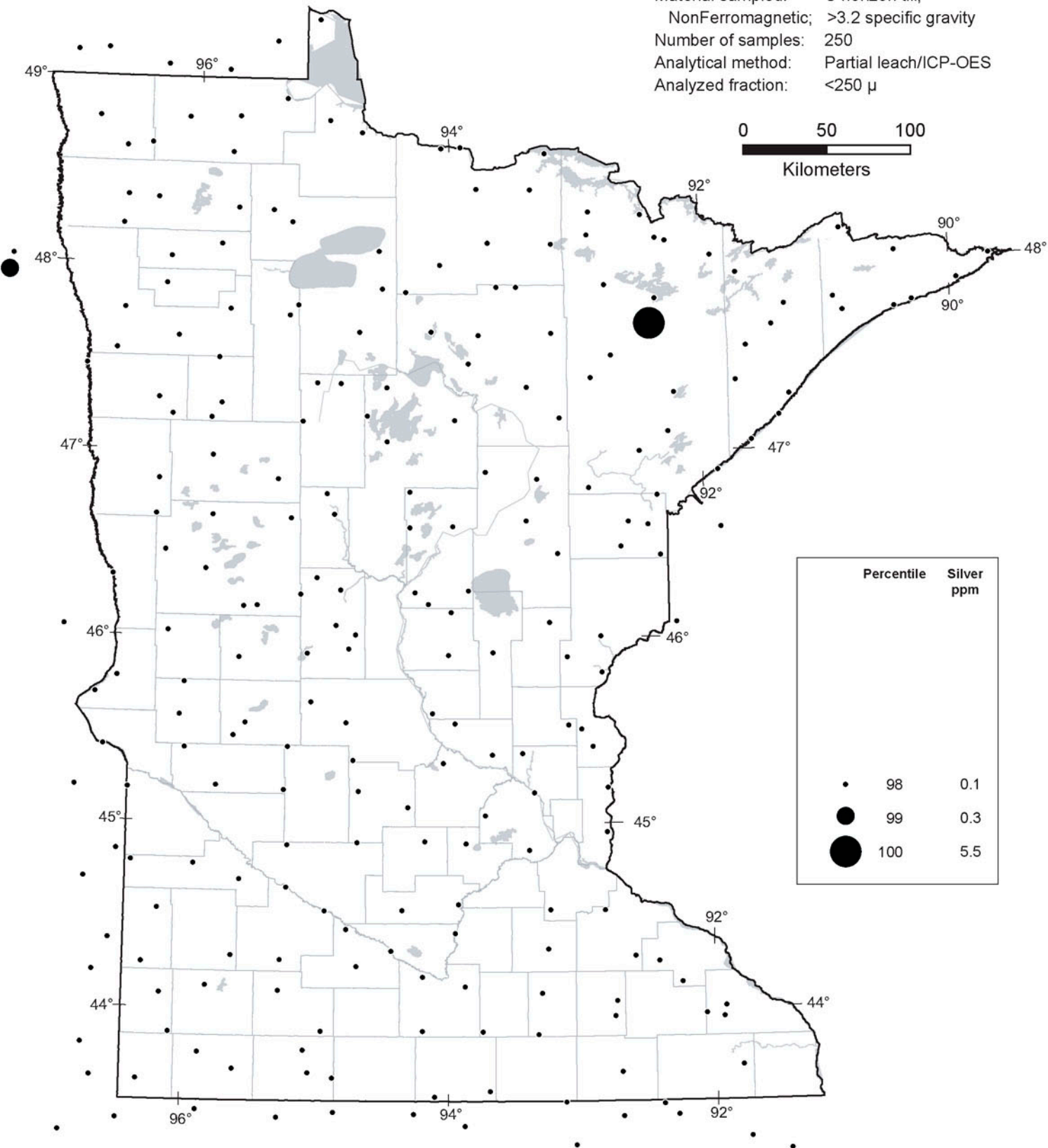
Percentile	Nickel ppm	
•	25	11
•	50	14
•	75	27
•	90	45
•	95	72
•	98	108
•	99	173
•	100	212



Soil Geochemical and Indicator Mineral Reconnaissance Survey of Till in Minnesota

Silver

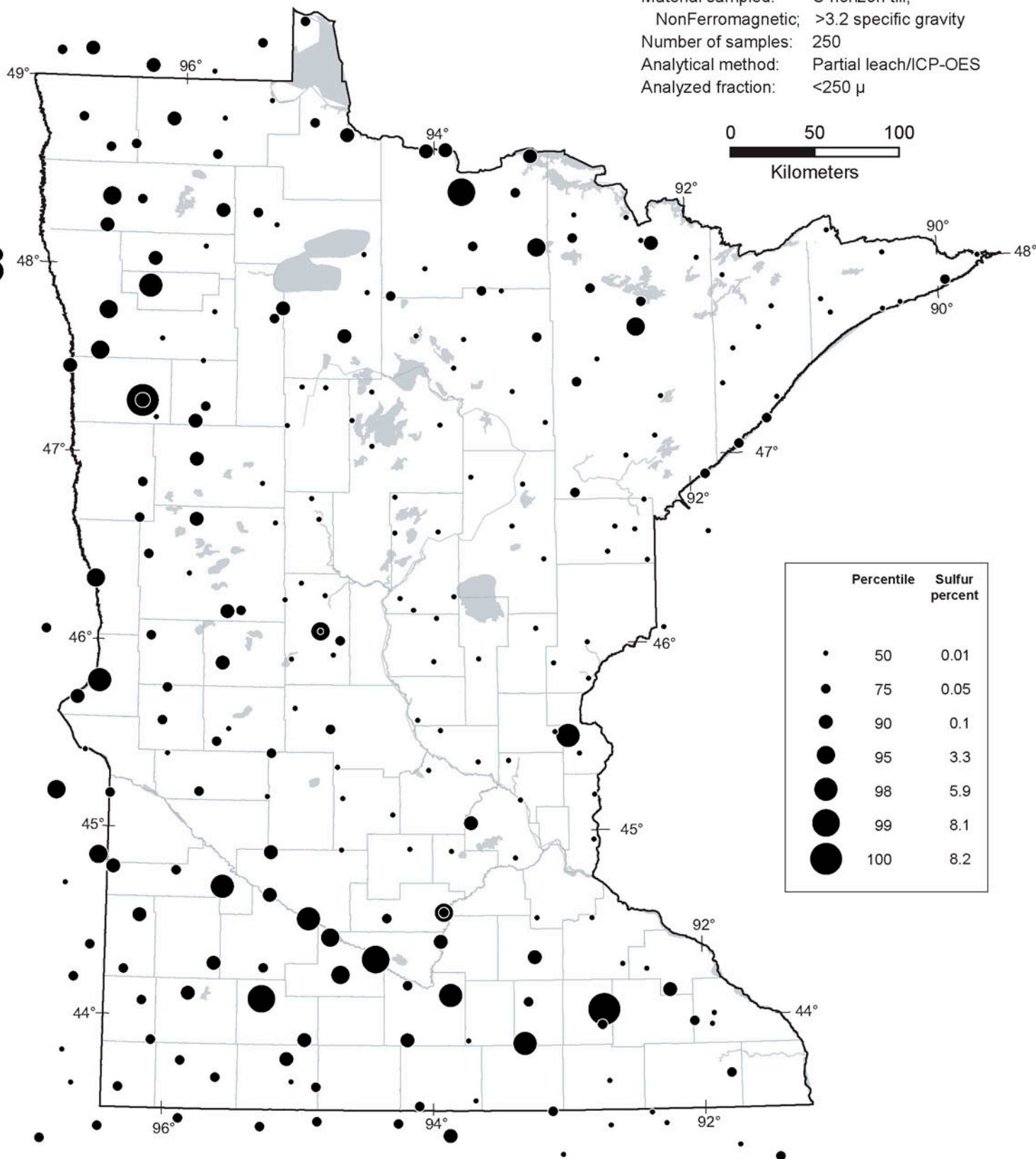
Year of collection: 2004
Material sampled: C horizon till;
NonFerromagnetic; >3.2 specific gravity
Number of samples: 250
Analytical method: Partial leach/ICP-OES
Analyzed fraction: <250 μ



Soil Geochemical and Indicator Mineral Reconnaissance Survey of Till in Minnesota

Sulfur

Year of collection: 2004
Material sampled: C horizon till;
NonFerromagnetic; >3.2 specific gravity
Number of samples: 250
Analytical method: Partial leach/ICP-OES
Analyzed fraction: <250 μ



Soil Geochemical and Indicator Mineral Reconnaissance Survey of Till in Minnesota

Zinc

Year of collection: 2004
 Material sampled: C horizon till;
 NonFerromagnetic; >3.2 specific gravity
 Number of samples: 250
 Analytical method: Partial leach/ICP-OES
 Analyzed fraction: <250 μ

