



Symptom Categories of Pest Damage

John Davidson
University of Maryland

1. Chewed leaves or blossoms



A. Defoliation
large caterpillars,
sawflies, slugs,
grasshoppers



B. Shot holes
small caterpillars,
leaf beetles



C. Margins notched
black vine weevil,
strawberryroot weevil



D. Skeletonization
elm leaf beetle,
Japanese beetle



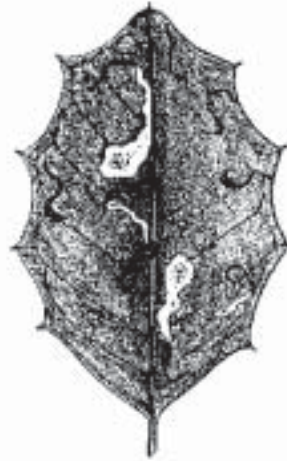
2. Discolored leaves or blossoms



A. Stippling
spider mites,
lace bugs,
plant bugs,
leafhoppers



B. Streaking
thrips



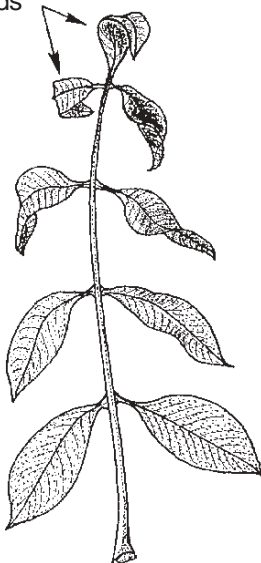
C. Mining
boxwood leafminer,
birch leafminer, locust
leafminer and oak
blotch leafminer (blotch
mines); native holly
leafminer (serpentine
mine)



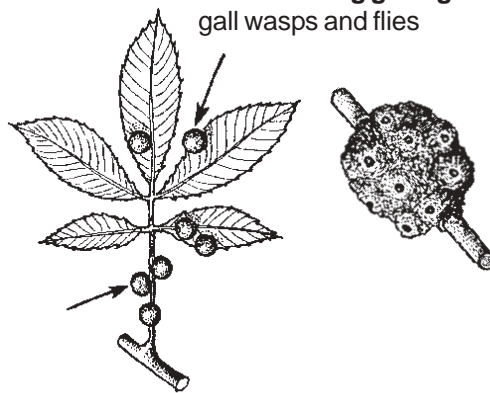
D. Yellowing
aphids,
mealybugs,
whiteflies

3. Distorted leaves, branches, or trunks

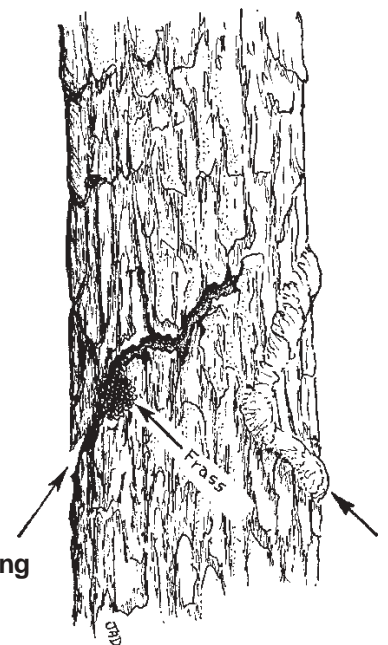
A. Leaf cupping
boxwood psyllid,
aphids



B. Leaf or twig galling
gall wasps and flies

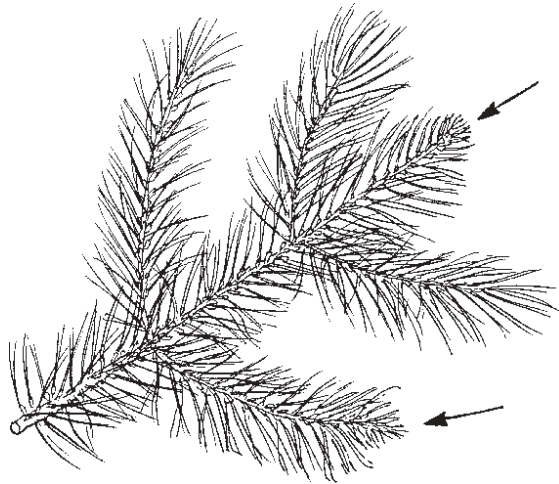


C. Bark rippling or cracking
moth and beetle borers

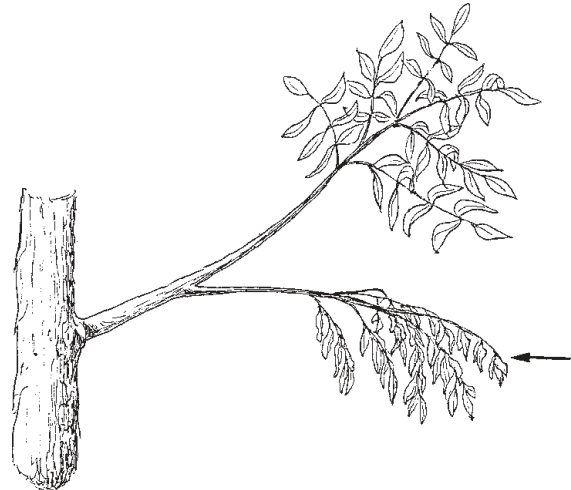




4. Dieback of shoots, twigs, branches

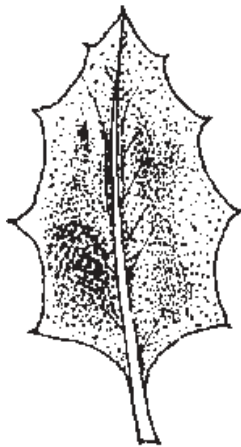


A. Shoot dieback
pine tip moths

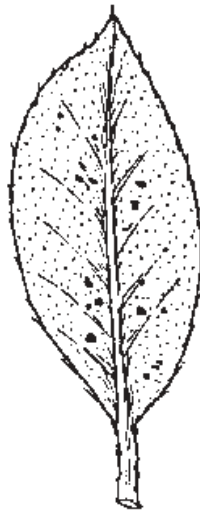


B. Branch dieback
Wood-boring beetles and moths, twig girdler, twig pruner, root feeding beetle larvae, scale insects

5. Products of insects



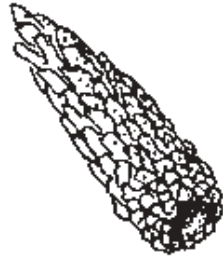
A. Honeydew and sooty mold
aphids, soft scale insects, leafhoppers, treehoppers, planthoppers, whiteflies, psyllids, mealybugs



B. Fecal spots
lace bugs, thrips, some plant bugs, leaf beetles



C. Silk
tent caterpillars, webworms, leaf tiers



D. Protective coverings
bagworms, case bearers



E. Fluffy white wax
adelgids, mealybugs, some
aphids, some scale insects, some
planthoppers



**F. Soft or hard white, brown, gray to
black wax covers**
armored scale insects