

MINNESOTA vs INDIANA

MEMORIAL STADIUM, NOVEMBER 7, 1953

THE GOALPOST

GOPHER

WISCONSIN

INDIANA

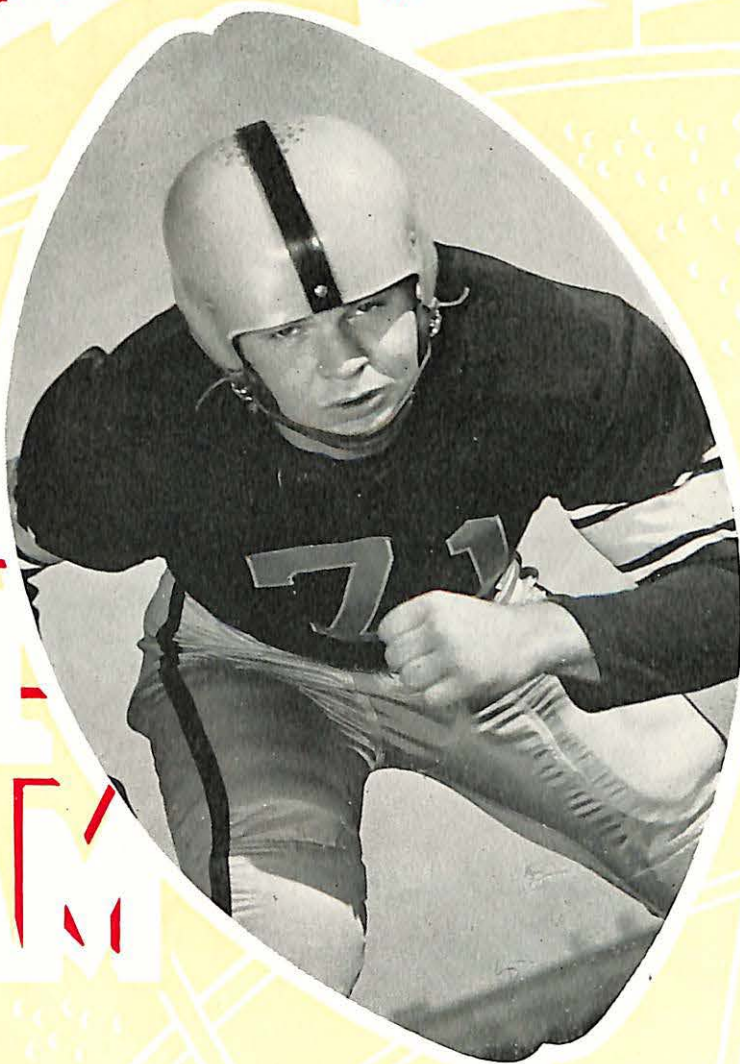
PITTSBURGH

MICHIGAN

MICHIGAN STATE

OFFICIAL PROGRAM

25c



RON HANSEN
Left Tackle

Minnesota Welcomes Its Alumni

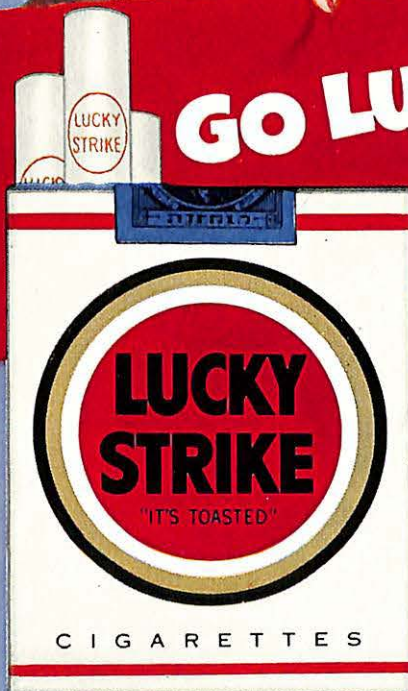
Team Rosters
Page 26 & 27

LUCKIES TASTE BETTER!

Cleaner, Fresher,
Smoother!

Be Happy

GO LUCKY!





Outfitters to the Greatest Names in Sports



SPORTING GOODS - ATHLETIC GOODS



Distributors



MacGregor
Sports Equipment



"THE CHOICE OF THOSE
WHO PLAY THE GAME"
EVERY SORT FOR EVERY SPORT



- | | | |
|---------|---------------|---------------|
| BOATING | VOLLEYBALL | BADMINTON |
| BOWLING | SKATING | BASEBALL |
| CAMPING | SKIING | BASKETBALL |
| FISHING | TENNIS | BOXING |
| GOLFING | TOBOGGANS | FOOTBALL |
| HUNTING | TRAP SHOOTING | HOCKEY |
| SOCCER | ARCHERY | TRACK & FIELD |
| | SOFTBALL | |



820-22 MARQUETTE AVE BR. 7793



OFFICIAL PROGRAM

OTIS DYPWICK, Editor

MARSHALL RYMAN, Business Manager of Athletics

Represented for National Advertising by Don Spencer Co., Inc., New York, N. Y.

Free Parking — Remaining Games and Ticket Information — Free Parking

For better seating purchase by Mail Order in Advance. Free convenient parking for ticket purchasers next to Cooke Hall. Enter from University Avenue.

At Home Games	Date	Price	Mail Orders Close	Availability	Public Sale Opens
Wisconsin*	November 21	3.60	November 9	Bench and Bleacher	Mon., Nov. 16
*Note: approximately 3,000 tickets remain for sale for Wisconsin.					
Away Games	Date	Price	Mail Orders Close	Availability	Public Sale Opens
Iowa	November 14	3.60	Closed	Behind Goal Line	Mon., Nov. 9

CAMERAS AND RADIOS—Under a ruling of the Big Ten Conference, the taking of still or moving pictures at Home games is prohibited. Spectators are requested to comply with this regulation. Guards and ushers have been instructed to enforce the rule.

Many complaints have been registered with the Athletic Department that portable radios detract from the spectators' enjoyment of the game. Consequently ushers have been authorized to pick up portable radios when complaints are registered and retain them until after the game.

LOST AND FOUND DEPARTMENT

—The Ticket Office operates a Lost and Found Department with the aid of the Boy Scouts. Articles found in the stands may be handed to any Boy Scout for delivery to the Lost and Found Department. Articles lost in the stands may be traced by calling the Athletic Ticket Office, Main 8101 or Nestor 2261. Every effort will be made to locate lost articles. Found articles are retained in the Ticket Office for two days. Thereafter, they will be sent to the Lost and Found Department in the University Post Office, Coffman Memorial Union, and should be called for there.

FIRST AID ROOM—Located on the concourse in room 122 near the Processional Entrance. Staffed by Red Cross Trained Boy Scout Civilian Defense Personnel.



PERSONAL PAGING—Because University authorities have found it extremely difficult to administer requests for emergency announcements over the public address system, all such requests for personal paging and announcements will be refused. Any patron expecting an emergency call is instructed to leave his name and specific seat location on file with the Ticket Office representatives located in the Tower office adjacent to patron's section.

THINK OF THE OTHER FANS—Spectators are requested not to stand in the aisles or leave the stands during the last few minutes of the final quarter because of the inconvenience occasioned by the majority of patrons who desire to have a clear view of the field. Those patrons seated near the aisles will appreciate your courtesy in remaining seated until the end of the game.

TO OUR PATRONS—The use of intoxicating liquors in this Stadium is prohibited. Ushers and officers have been instructed to refuse admission to ticket holders who are intoxicated. We shall revoke the license conferred by the ticket and

eject from the Stadium anyone violating this restriction.

IKE ARMSTRONG, Director of Athletics.

PLEASE — Arrive and Be Seated Before Kickoff — Remain in Seats to End — PLEASE

SENATE COMMITTEE ON INTERCOLLEGIATE ATHLETICS 1953-54

T. F. Barnhart, <i>Chairman</i>	Henry Rottschaefer	Chester W. Wood	Louis Gross
David W. Louisell	Ike Armstrong	John Williams	Robert H. Allen
H. S. Diehl	Wm. T. Middlebrook	Max O. Schultze	Don McGrath
J. Lewis Maynard	J. W. Stehman	Francis Lund	

TABLE OF CONTENTS

	Page		Page
As Wes Sees It	4	Basketball Ticket Information and Schedule	28-29
Homecoming	6-7	Where Do the Gophers Come From?	30
The Minnesota Band Today	10-11	Minnesota's Individual Statistics	31
Big 10 and Nationally Important Games Today	11	Autographed Souvenir Picture—Bob McNamara	32
Indiana vs. Minnesota	14-15	Hoosier Star—Florian Helinski	34
Indiana Coaching Staff	14	Penalties	35
Minnesota Coaching Staff	15	Know Your Football	36
Meet the Hoosiers	16-17	What Playing Football at Minnesota Has Meant to Me	
Meet the Gophers	18-19	—Frank Rog	37
Hockey Ticket Information and Schedule	21	Reminiscing with Bernie	38
Indiana Starting Lineup, Squad	22	Inside Cooke Hall—Physical Education	40
Minnesota Starting Lineup, Squad	23	Meet Our Cheerleaders	42
Indiana's Complete Roster	26	Minnesota Serves—Pig Nutrition	43
Program of Events Today	26	Parking Hints	44
Minnesota's Complete Roster	27		

A Touchdown in any League . . .

THE FINEST STEAKS IN THE NORTHWEST

CULBERTSON'S CAFE, INC,

5916 Excelsior Boulevard, St. Louis Park • Minneapolis

We Serve Luncheons Daily Except Sunday and Monday

T. J. Culbertson, *President* Eldon S. Rothgeb, *Vice President* C. T. Vandenoever, *Secretary-Treasurer*



CHET VANDENOEVER

For Better Service . . .
Please Make Reservations

TELEPHONE MOHAWK 9-8544

Dinner Music 7 P.M. — 9 P. M.

Dancing 9 P. M. — 12:45 P. M.



TED CULBERTSON

CO-MANAGERS

DIRECT BUS SERVICE FROM CULBERTSON'S CAFE TO STADIUM AND RETURN

OFFICIAL WATCH FOR THIS GAME



Longines



The World's Most Honored Watch



LONGINES WATCHES ARE OFFICIAL
FOR TIMING
CHAMPIONSHIP SPORTS IN ALL
FIELDS THROUGHOUT THE WORLD

*Product of
Longines-Wittnauer Watch Company*



WES FESLER

As Wes Sees It

Coach Wes Fesler sizes up today's game with Indiana

Today is Homecoming and I know our fellows are exceedingly anxious to play their best possible game.

Certainly just the thought of Homecoming should key our Gophers. However, make no mistake, Indiana has a good, sound football team.

Scout Wally Johnson reports that they have been the victim of several bad breaks this year. They played Iowa to a standstill and lost by only six points; they made USC look bad for three quarters and then ran out of gas.

The return of Bobby Robertson, a fine left half, gives coach Bernie Crimmins quite a backfield. Quarterback Florian Helinski and right half Jerry Ellis are both seasoned veterans. Helinski, especially, is an all-around player who can pass, punt, run, and kick extra points.

I remember Robertson's performance against Notre Dame two years ago. He practically tore the Irish to shreds singlehandedly.

Lyal Clark, Dick Fisher, and I have had good luck in previous years against the Hoosiers. The late "Bo" McMillin beat us our first season at Ohio State but since then we have been able to come out on top each time. We hope our good fortune continues today.

Many of you fans may be wondering about a comparison between the Michigan and Pittsburgh games. This is extremely difficult because the Wolverines and Panthers are two different types of teams.

In the Michigan game we played real good football but made several mistakes. Our fumbles, missed interceptions, and the like prevented us from scoring at least two more touchdowns.

We eliminated these mistakes against Pitt and as a result, the fellows gave their best team performance.

**DIRECT FROM LONDON CORONATION SEASON!
THE ROYAL OPERA HOUSE, COVENT GARDEN, LTD.**

DAVID L. WEBSTER, General Administrator
in association with The Arts Council of Great Britain

presents

**SADLER'S
WELLS
BALLET**

**THE
FABULOUS**

Director: NINETTE DE VALOIS
Associate Director: FREDERICK ASHTON
Under the management of S. HUROK

COMPANY OF 150 WITH SYMPHONY ORCHESTRA

presented by

University Artists Course

November 9, 10 and 11 at 8:30 P. M.

TICKET INFORMATION

TICKETS AVAILABLE: \$2.00, \$2.50, \$5.00
TICKET OFFICES: 105 Northrop, University of Minnesota,
Downtown Ticket Office, Minneapolis, Field-Schlick, St. Paul

Northrop Memorial Auditorium, University of Minnesota

Next game...

Leave your car
in the loop!

Take a
Twin City Lines
streetcar or bus—

or

Go in a Group—Charter a Bus

*It's cheaper,
more comfortable,
faster, and
more convenient!*

TWIN CITY LINES

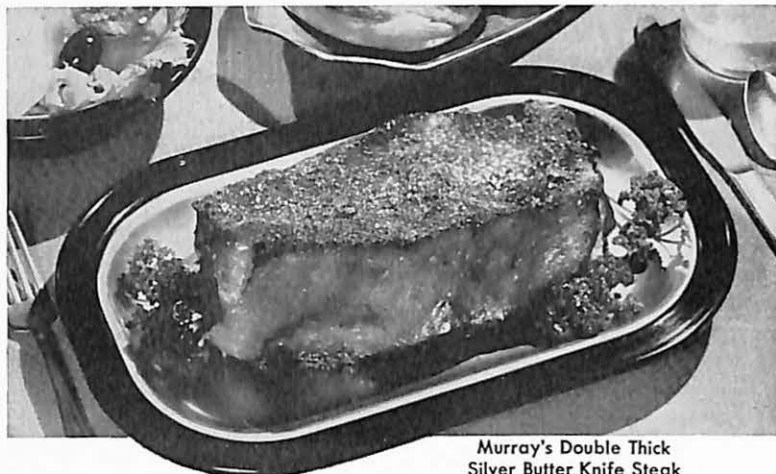
.... Dinner for Two!



M-m-m Man!!!

Here's the steak of your dreams

... so tender you can cut it with a butter knife ... double thick and broiled to perfection. After the game, bring your appetites to Murray's for this nationally famed Silver Butter Knife Steak ... Murray's complete dinner for two.



Murray's Double Thick
Silver Butter Knife Steak

Murray's

RESTAURANT and LOUNGE

SIXTH STREET BETWEEN NICOLLET AND HENNEPIN
MINNEAPOLIS, MINNESOTA



Fly the Finest!

**COAST TO COAST • HAWAII • ALASKA
CANADA • The ORIENT**

SEE YOUR TRAVEL AGENT OR

NORTHWEST *Orient* AIRLINES

Short route to the Orient

Homecoming—1953

The long-awaited 1953 Homecoming game against the Indiana Hoosiers has come at last, and with it, we hope, a "Hoosier Harvest."

"Harvesting" of said Hoosiers is being left to Wes Fesler and his mighty Gopher Gladiators—the Homecoming activities off the gridiron have been capably handled by Dick Hancock and his committee.

Although many activities from previous Homecomings are included in this year's festivities, several innovations have been added. Among them are the following: Crowning of the Queen by the Alumni King at the Coronation Ball on Thursday evening; Conversion of the Annual Pep dance Friday night into a gala street dance following the pep fest and bonfire.

Already a matter of history are the annual parade on Friday noon which started from downtown Minneapolis and wended its way to the campus; and the Varsity Show on Thursday and Friday evenings. This was written and produced by students.



DICK HANCOCK
General Chairman



LEN FELDMAN
Public Relations

The 1953 Homecoming Committee

DICK HANCOCK, *Chairman*

JIM CADLO, *Assistant Chairman*

LEN FELDMAN, *Public Relations*

HARRY KASTEN, *Business Manager*

JEAN BIGELOW

IRV CORNWELL

BOB ENGSTROM

DALE EPLAND

MURIEL DRONGESON

JOAN HANCOCK

LOU JOHNSON

SUZANNE JOHNSON

MIKE UBL

ALYCE KATZENMEYER

ED MARKS

DALE PETERSON

BOBBIE QUICK

MARY ANN RYDER

JACKIE STEVENSON

MARY SUNDBERG

JIM TRUNK



JIM CADLO
Assistant Chairman



HARRY KASTEN
Business Manager



By the time this issue of the **GOPHER GOALPOST** reaches you, one of the five lovely University of Minnesota coeds pictured above will have been named 1953 Homecoming Queen.

They are (left to right) Faye Bye, Marty Scharmann, Lois Kiecker, Mary Ann Brooks, and Carol Lundstrom.

These girls survived earlier eliminations in which scores of undergraduate women were taken into consideration as candidates for the coveted honor of reigning over Homecoming festivities.

EDUCATOR AND BASKETBALL STAR BECOMES MINNESOTA ALUMNI KING

Grant H. "Spike" Johnson, former basketball player at Minnesota and now Superintendent of schools in Detroit Lakes, was selected as Minnesota's third annual Alumni King.

The selection was made by a student-alumni committee from a dozen or more nominations submitted by alumni clubs throughout the United States and the MAA executive committee from the Twin Cities. Congratulations, "Spike."

The Homecoming committee takes this opportunity to thank the Alumni, the many University Departments, and the friends of the "U" for their help and cooperation.



GRANT JOHNSON
Alumni King

Nelson

MASTER ROOFS



The Color-Key to Exterior Decorating

Use color for effect as well as for beauty, and you can completely change the appearance of your house. The right colors will accentuate its best features—and subdue the less attractive ones. They will make it appear longer or shorter, lower or higher, depending upon your wishes. The important thing is this—your roof is the natural starting point for remodeling with color.

Tall, older houses can be handled in several ways. An appearance of dignity and formality can be attained by using a black roof and harmonizing grey side walls. Or you can make this house look lower—longer, by using Nelson Pine Green asphalt shingles and matching shutters against a cheery, bright side wall.



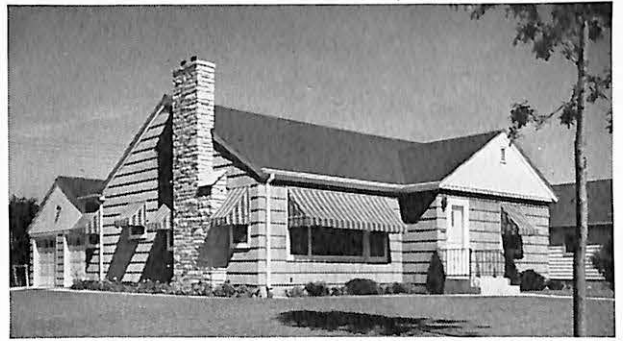
This roof has so much slant it dominates the entire house. It can be made to recede by using Nelson Cool Blend shingles. The wide shadow line of the siding and a shutter color to match the asphalt roof, will give this home a longer look.



This modernistic ranch house brings the roof down close to the eye. A Nelson Solid Blue shingle and gay light side walls give this house an appearance of greater length plus a warm inviting atmosphere. Accent the color-plan with blue trim.

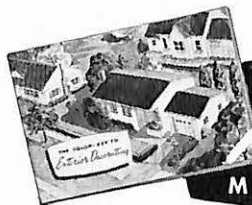


The Nelson Amber Blend roof and brown side walls harmonize to give unity to the length of this rambler. It fits right into the more suburban surroundings in which this type of home would be built. White and orange trim spark up windows and doors.



This story-and-a-half house had a rather boxy appearance. Here, a dark red roof flecked with green (Nelson Warm Blend) is used to give a lower effect. The side walls pick up the green of the roof for harmony, white trim adds the right note of accent.

"The Color-Key to Exterior Decorating", colorful new booklet giving ideas of decorating the exterior of your home. For your copy send 25¢ with your name and address.



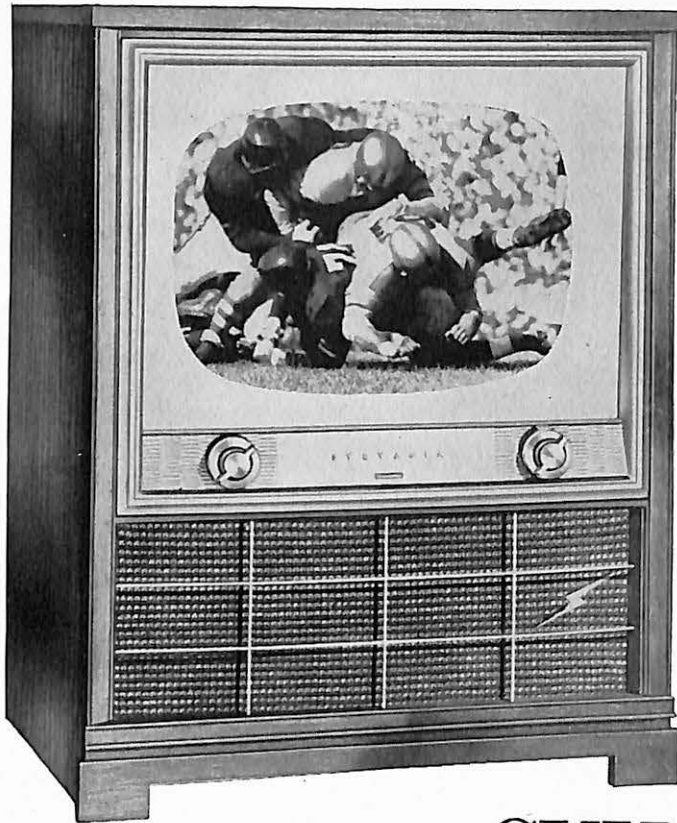
Nelson
MASTER ROOFS

THE B. F. NELSON MFG. CO.

MINNEAPOLIS

Wherever You Live...

SYLVANIA TV



TOPS 'EM ALL

for...

- ★ FRINGE AREA RECEPTION!
- ★ ALL-CHANNEL UHF-VHF TUNING!
- ★ BRIGHTEST, CLEAREST PICTURES!
- ★ MUCH GREATER EYE-COMFORT!

Only

SYLVANIA TV

has

HALOLIGHT *and* PHOTOPOWER

The Frame of Light That's Kinder to Your Eyes

For Photographic Clarity Even in Distant Reception

HALOLIGHT, the eye-comfort feature becomes more popular every day. When you see it for yourself, you, too, will know that for complete television pleasure . . . there's no substitute for **HALOLIGHT!** It even makes the pictures seem larger!

City or country, Sylvania TV with new **PHOTOPOWER** Performance can't be beat when it comes to the best reception. When you own a new 1954 Sylvania TV receiver, you can be sure to enjoy the best pictures and sound in your neighborhood.

See Your Sylvania Dealer

DISTRIBUTED BY STERLING ELECTRIC CO.

even better'n ever
smoo-o-other
spreading!



GOOD FOODS, INC. • MINNEAPOLIS, MINNESOTA

THE MINNESOTA BAND TODAY

On October 10th, the Minnesota Football Marching Band traveled to Evanston to play at the Minnesota-Northwestern game. For the fans at that game, the band presented its "TV IN '53 SHOW." Today, between halves of this big Homecoming game, the band will repeat this show for our home-staters.

The first formation is a TELEVISION SET which the band turns on. We hear the set hum as it warms up, and—as it reaches full volume—the "Cavalcade of Sports" fanfare bursts forth.

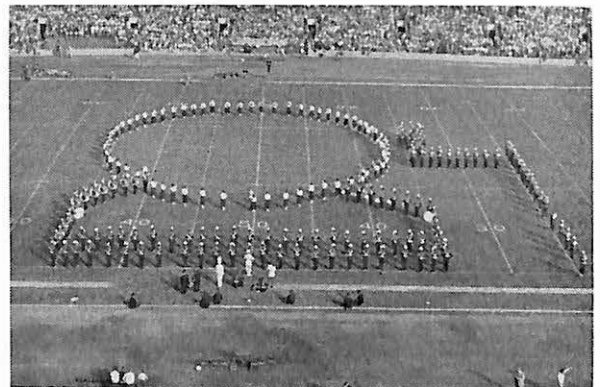
In the BOXING BELL formation typifying just one variety of the many sports programs on TV, the clapper moves and the sound of the bell is heard.

The HOURGLASS with the sand running out and the "Dragnet" musical theme indicate that time is running out on the criminal. The hourglass quickly changes to a JAIL WINDOW, and the "prisoner" is caught behind bars as the band plays "Prisoner's Song."

The band plays "Deep in the Heart of Texas" for the many western shows seen on television. As the cowboy's hat is placed on his head, we see that this COWBOY apparently should have had a "5-gallon hat," because this one completely covers his head and his legs are bowed even more under the added weight.

The popular "Hoosier" Herb Shriver is represented by the band today, as we all pay tribute to our 1953 Homecoming Queen. From the band's "LOOK" formation, this well-known television comedian fol-

(Continued on next page)





A Great Idea . . .

FOR FOOTBALL DAYS

• • • luncheon at the **CRITERION** • • •

• • • leave your car in
the **CRITERION'S** private parking lot • • •

then ride the **CRITERION'S** bus to all home games!

• • • parties for 6 to 80 • • •

1½ miles west of the State Capitol on University

the *Criterion* restaurant

739 University, at Grotto • • • rated as one of America's top fifteen restaurants • • • Midway 4262

THE MINNESOTA BAND

(Continued from page 10)

looks the queen with his eyes as she proceeds around the cinder track, and he exclaims "Oh, You Beautiful Doll."

- Following is the staff for the Minnesota Band:
- Gerald R. Prescott *Director of Bands*
 - Gale L. Sperry *Director of Marching Bands*
 - Butler Eitel *Director of Women's Division*
 - Bill Anderson *Student Director and Asst. to Mr. Sperry*
 - James Wetherbee *Drum Major*



BIG TEN GAMES TODAY

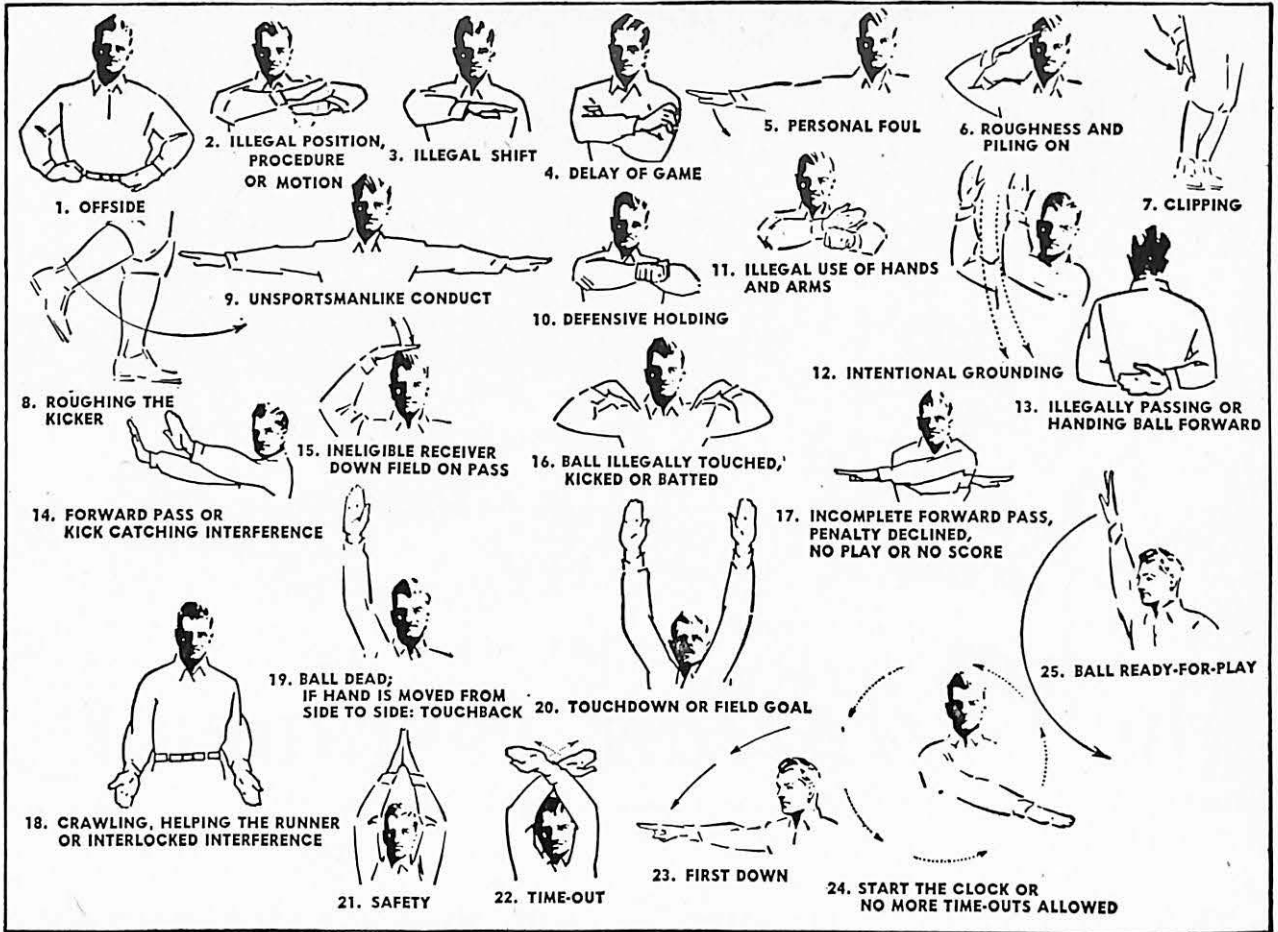
Indiana	at	Minnesota
Michigan	at	Illinois
Iowa	at	Purdue
Michigan State	at	Ohio State
Wisconsin	at	Northwestern

Big Ten Games Next Week

Minnesota	at	Iowa
Illinois	at	Wisconsin
Northwestern	at	Indiana
Michigan	at	Michigan State
Purdue	at	Ohio State

Games in the National Limelight

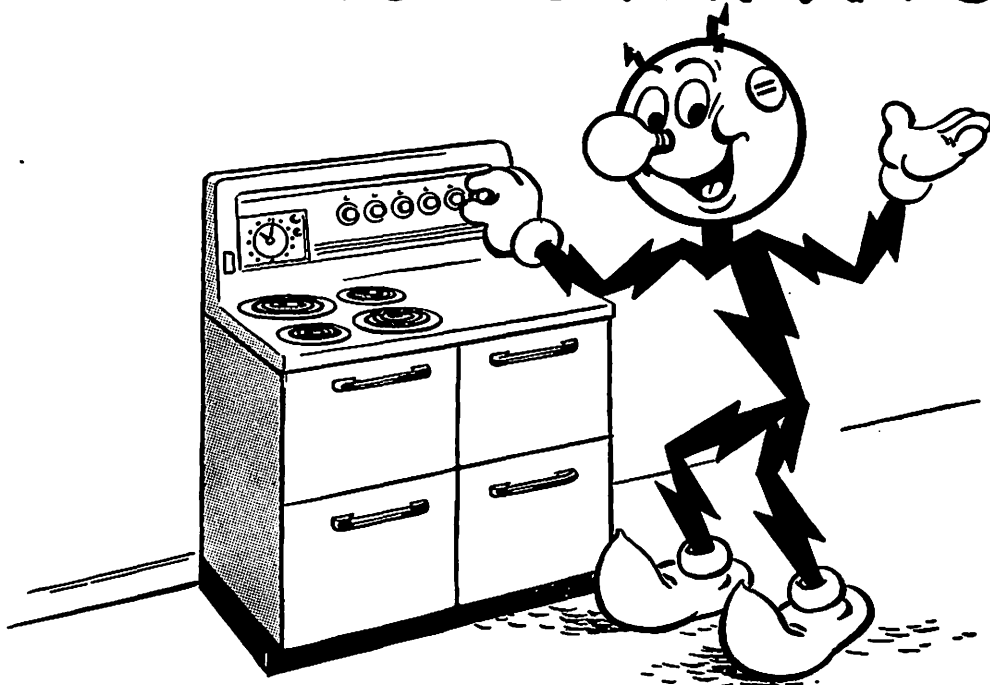
Arkansas	at	Rice
Baylor	at	Texas
Washington	at	California
Duke	at	Navy
Harvard	at	Princeton
Kansas State	at	Kansas
Oklahoma	at	Missouri
Notre Dame	at	Pennsylvania
Stanford	at	USC
Pittsburgh	at	Virginia



GOOD...any old time!

AMERICA'S LARGEST SELLING CHEESE CRACKER

Electric Cooking is **AUTOMATIC**



Once you set the time and temperature controls on your Electric Range, there's nothing more to do until time to serve! Speed, accuracy and perfect temperature control are assured.

• See the New Electric Ranges at your
Electric Appliance Dealer or—

NORTHERN STATES POWER COMPANY



INDIANA COACHING STAFF

Freshman Coach Ted Whereatt, Line Coach Chris Dal Sasso, Line Coach Bob Maddock, Head Coach Bernie Crimmins, End Coach Bob Fitch, Backfield Coach Mick Connolly.

INDIANA v

The Minnesota-Indiana football series started in 1906 with an 8-6 Gopher win November 24 on frozen and slippery Northrop Field.

Since 1906 19 games have been played. Minnesota has copped 13, Indiana 4, and 2 have ended in ties.

While Fielding Yost's Michigan teams were known as "point-a-minute" outfits, "punt-a-minute" might well describe that 1906 Gopher-Hoosier affair. Both sides punted 28 times; Minnesota for 858 yards and Indiana for 820 yards.

The next meeting occurred in 1917. The Gophers, led by captain George Hauser's spirited line play and quarterback Neil Arnston's running, walloped the Hoosiers 33-9. Because of the war and the late opening of school, enabling students to take part in the fall harvests, Dr. Williams could not start practice until October 1 that year.

In 1919 Indiana kicked two early field goals and had possession of the ball for the first ten minutes before the Gophers could get going. After that, it was strictly a Minnesota show, winding up 20-6.



MINNESOTA COACHING STAFF

Front row, left to right: Dick Fisher, backfield coach; Wes Fesler, head coach; Lyal Clark, line coach; Bud Svendsen, assistant coach. Back row: John McNally, assistant J-V coach; Wally Johnson, head J-V coach; George Nash, assistant coach; John Kulbitski, freshman coach.

S MINNESOTA

Indiana's first victory came in 1920. The Hoosiers allowed Minnesota a first period TD and then unleashed their passing attack for a 21-7 triumph.

Minnesota stayed on top until 1942 winning 6-0 in 1921, 20-0 in 1922, 21-12 in 1928, 19-7 in 1929, 6-0 in 1930, 30-0 in 1934, and 6-0 in 1937. Two ties marred the otherwise perfect Gopher record, 14-14 in 1927 and 6-6 in 1933, a year which found the Maroon and Gold playing four deadlocks.

"Bo" McMillin's 1942 team finally ended the In-

diana victory drought with a 7-0 win; Pete Pihos catching a fourth quarter pass for the lone touchdown.

In 1944 the Gophers triumphed 19-14 and then were blanked twice by the Hoosiers. McMillin's 1945 conference champs trounced the "Giants of the North" 49-0 and won again in 1946 21-0.

The last two meetings have resulted in Minnesota wins, 30-7 in 1948 and 16-14 in 1951, Wes Fesler's first season at Gopherville.

Meet the

Richard Barnhart

John Bartkiewicz

Ray Bragalone

Tom Cassidy

John Connors

Dan Coughlin

Nate Borden

George Crowe

Tom Dailey

Don Domenic

Jerry Ellis

Wayne Ethridge

Pat Fellingner

Ernie Ferrario

Earl (Pete) Fisher

Tom Hall

Florian Helinski

Bill Holzbach

I

Hoosiers

Harry Jagielski

Ted Karras

Conney Kimbo

Paul Kobulnicky

Lou Kollias

Lester Kun

Bob Peake

Ron Rauchmiller

Charles Razmic

David Rogers

Ernie St. Jacques

Ken Schermer

Robert Skoronski

Edward Slosky

Brock Strom

Jim Vessel

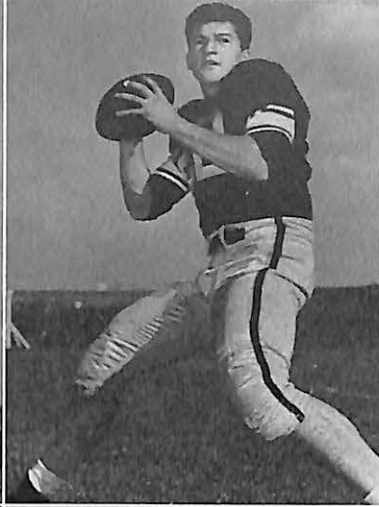
Charles Young

John Zuger



I

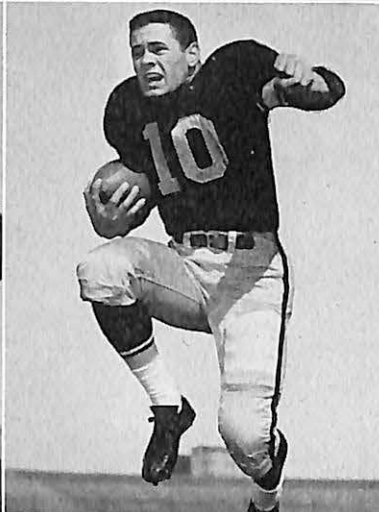
Meet the



John Baumgartner

Geno Cappalatti

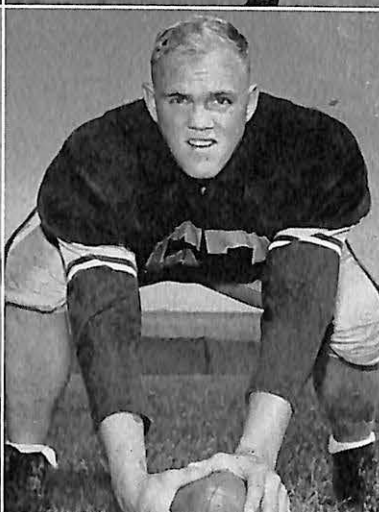
Harry Coates



Rocky Elton

Mike Falls

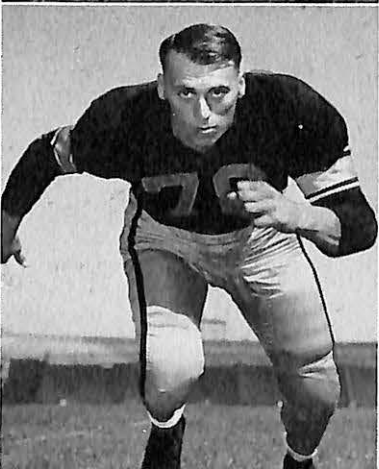
Paul Giel



Bob Hagemester

Ron Hansen

Jerry Helgeson



Mel Holme

Gordon Holz

Gary Johnson

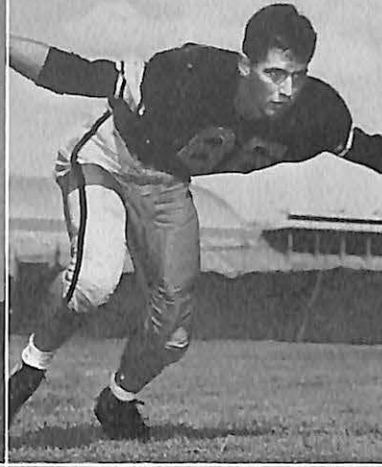
M

Gophers

John Kapotas

Phil McElroy

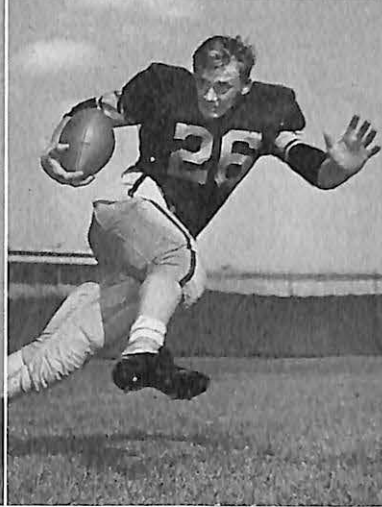
Bob McNamara



Steve Myhra

Dale Quist

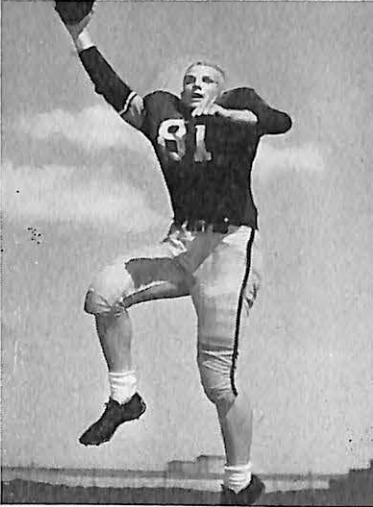
Jerry Rau



Bob Rutford

Max Schmitt

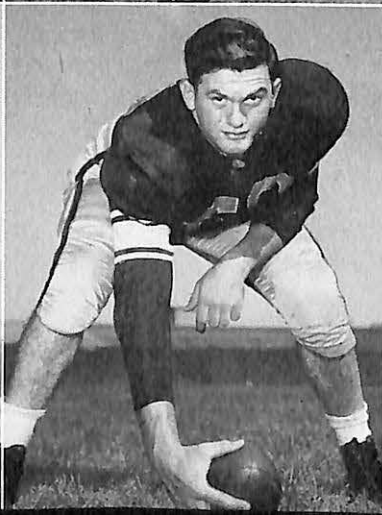
Ron Smith



Jim Soltau

Chuck Stamschor

Mike Sullivan



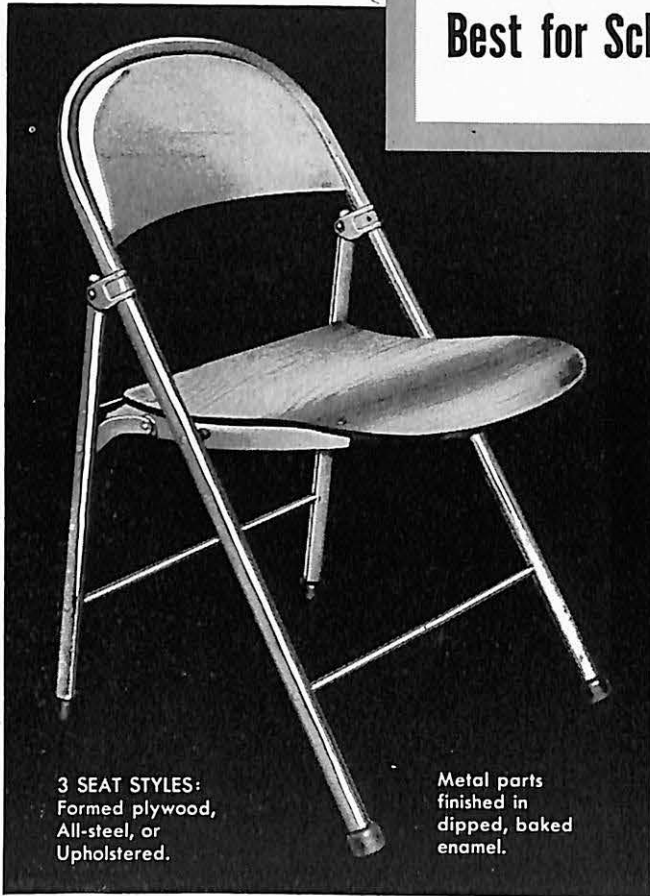
M

NEW!

American

FOLDING CHAIRS

Best for Schools, Colleges and Universities



3 SEAT STYLES:
Formed plywood,
All-steel, or
Upholstered.

Metal parts
finished in
dipped, baked
enamel.



HANDY STORAGE TRUCKS

In two styles: for general or under-stage use. Permit easy, convenient storage. Swivel casters—removable handles—ample capacity.

ST. PAUL BOOK & STATIONERY CO.

CORNER 6TH AND CEDAR ST. PAUL 1, MINN.

GA. 5894

Phones

PR. 5511

"Convenient Parking in Nearby Lots"

BUILT FOR COMFORT AND DURABILITY

by the world's leader in public seating

STRENGTH ★ SAFETY ★ SILENCE!

Newly styled and ruggedly built with triangular steel tubing, American Folding Chairs are famous for the extra comfort of their wider, deeper, shaped seats and wider, deeper, formed back panels. More than 65 years of public-seating experience have gone into these chairs, to make them the finest folding chairs in the world!

American Folding Chairs have no sliding or binding parts, no snagging, cutting, or soiling hazards. They fold quickly, quietly, compactly, and can't tip forward in use. They are light in weight, easy to carry and to store. *Write Dept 12.*

EXCLUSIVE LONG-LIFE FEATURES:

BACK PANEL is deep-formed for comfort from one piece of steel, inserted and welded into the frame. Bottom edge is rolled for rigidity.

HINGE SECTION has solid reinforcing bar within frame, extending 4" above and 7" below hinge rod, distributing load.

CROSS BRACES are of solid steel, shouldered against inside of legs and securely riveted on outside of legs, resisting load from any direction.

STEEL GLIDES are crimped around each leg and capped with durable rubber shoes that won't mark floor.

Clamps, for Sectional Grouping—Permit fastening chairs in sections of two or three, 1 inch apart.

Steel Threshold permits locking chairs into position at ends of rows, 30" back to back, for three or more rows.

OVER 8 MILLION IN USE!

SEE CHAMPIONSHIP HOCKEY

Yes, the University of Minnesota hockey team that won the 1953 Midwest Collegiate Conference championship is back virtually intact.

Coach Johnny Mariucci promises more of the same exciting and speedy action plus all the thrills of the finest collegiate hockey in the land in the season ahead.

Such great favorites as Captain Gene Campbell, Johnny Mayasich, Dick Dougherty, Dick Meredith and Goalie Jimmy Matson are being augmented by many stars up from the best Gopher freshman squad of the past decade.

You'll want to see this great hockey show that last season drew sellout crowds of more than 7,000 to Williams Arena.

In addition to a schedule of 17 games including some of Canada's top amateur teams and the best of the United States collegians, there will be an outstanding high school preliminary game preceding each home game at 7 p.m.



Captain Gene Campbell

THE COMPLETE HOME SCHEDULE

8:30 P.M.	PRELIMS 7:00 P.M.
Friday, December 4	ST. BONIFACE H. S. Prelim—Washburn vs. St. Paul Wilson
Saturday, December 5	ST. BONIFACE H. S. Prelim—Roosevelt vs. Coleraine Greenway
Friday, December 11	FT. WILLIAM H. S. Prelim—Mechanic Arts vs. Henry
Saturday, December 12	FT. WILLIAM H. S. Prelim—St. Louis Park vs. Hibbing
Tuesday, December 22 *	HARVARD H. S. Prelim—Duluth Denfeld vs. Harding
Tuesday, December 29	DARTMOUTH COLLEGE H. S. Prelim—Breck School vs. Roseau
Wednesday, December 30	DARTMOUTH COLLEGE H. S. Prelim—Blake School vs. Southwest
Friday, January 1	COLORADO COLLEGE H. S. Prelim—Eveleth vs. Johnson St. Paul

**PRE-NEW
YEAR HOME
GAMES**

Friday, Saturday, December 4-5	St. Boniface of Winnipeg
Friday, Saturday, December 11-12	Ft. William Canadiens
Tuesday, December 22	Harvard University
Tuesday, Wednesday, December 29-30	Dartmouth College

Harvard University
Tues., Dec. 22
Dartmouth College
Tues. & Wed., Dec. 29-30
\$1.25 and \$1.75

TICKET PRICES	GENERAL ADMISSION	\$ 1.00
	RINK SIDE	\$ 1.50
	SEASON RINK SIDE	\$13.20

ALL BUT HARVARD
INCLUDED IN
SEASON TICKET

Tear Out and Mail

Name, Address and Postal Zone Above

UNIVERSITY OF MINNESOTA
ATHLETIC DEPARTMENT

1953-54 Hockey Season Ticket Application

Mail Orders open Monday, Nov. 16

All Seats Reserved

**A Thrill a Minute
World's Fastest Sport**

**FOLLOW YOUR
GOPHERS**

**End Ticket Problems
Purchase a Season Ticket**

* Harvard Dec. 22 not included
in Season Ticket

Est. Price \$11.00
Fed. Tax 2.20
TOTAL \$13.20

Note: Season TICKET ADMITS TO SPECIAL HOLIDAY SERIES
WITH DARTMOUTH AT NO EXTRA CHARGE.

Tickets @ \$13.20 \$ _____
Insurance and Postage .25

Total Remittance \$ _____

SAVE \$10.80 - SINGLE GAME VALUE \$24.00

Address All Mail to: Athletic Ticket Office, University of Minnesota, Minneapolis 14

MAIL ORDERS CLOSE
FRI., NOV. 27TH

Date	Sec.	Row	Seats
------	------	-----	-------

INDIANA

PROBABLE STARTING LINEUP

No.	Name	Position
85	JOHN ZUGER	LE
64	JOHN CONNORS	LT
37	TOM DAILEY	LG
53	WAYNE ETHRIDGE	C
69	TED KARRAS	RG
73	HARRY JAGIELSKI	RT
75	NATE BORDEN	RE
25	FLORIAN HELINSKI	QB
40	BILL HOLZBACH	LH
16	JERRY ELLIS	RH
43	LESTER KUN	FB

THE HOOSIER SQUAD

16 Ellis, RH	52 Vesel, C
17 Crowe, FB	53 Ethridge, C.
18 Stone, RH	55 Strom, C
23 Domenic, QB	60 Coughlin, RG
25 Helinski, QB	61 Barnhart, LG
26 Cassidy, QB	64 Connors, LT
27 Bragalone, QB	65 Kollias, LG
31 Peake, FB	66 Hall, LG
32 Young, FB	68 Schermer, RE
35 Rogers, RH	69 Karras, RG
36 Slosky, RG	71 St. Jacques, LT
37 Dailey, LG	72 Skoronski, RT
40 Holzbach, LH	73 Jagielski, RT
42 Gentile, FB	75 Borden, RE
43 Kun, FB	76 Landefeld, LT
45 Bell, RH	79 Kimbo, LT
46 Robertson, LH	80 Rauchmiller, RT
47 Bodart, LE	81 Kobulnicky, LE
49 Bartkiewicz, FB	82 Alverson, RE
51 Razmic, C	85 Zuger, RE
	86 Moon, LG

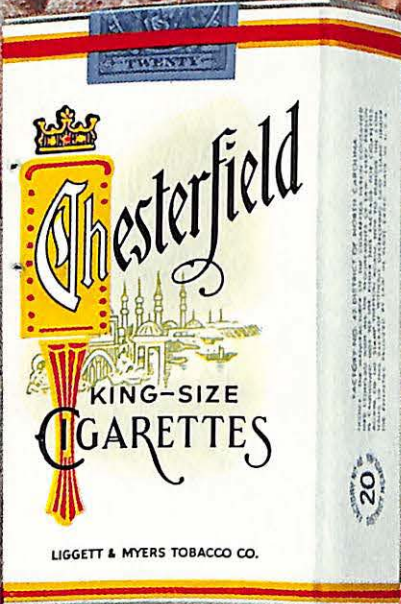
CHESTERFIELD
BEST FOR YOU

Choice of You
CHESTERFIELD



FIRST WITH PREMIER

ing America
CHESTERFIELD



MIUM QUALITY

MINNESOTA

PROBABLE STARTING LINEUP

No.	Name	Position
88	JAMES SOLTAU	LE
78	GORDON HOLZ	LT
67	BOB HAGEMEISTER	LG
57	JERRY HELGESON	C
62	JERRY RAU	RG
79	STAV CANAKES	RT
81	ROBERT RUTFORD	RE
15	GENO CAPPELLETTI	QB
10	PAUL GIEL	LH
44	BOB McNAMARA	RH
33	MEL HOLME	FB

THE GOPHER SQUAD

10 Giel, LH	60 Garbe, LG
12 Schmitt, QB	61 Stannard, LG
14 Krohnfeldt, QB	62 Rau, RG
15 Cappelletti, QB	64 Kauffmann, LG
18 Sauer, QB	66 Coates, RG
19 LaPage, QB	67 Hagemeister, LG
20 Meredith, LH	68 Elton, LG
21 Jennett, LH	69 Falls, RG
22 Arthur, LH	70 Andrus, RT
24 Yackel, RE	71 Hansen, LT
25 McMahon, LH	72 Smith, LT
26 Quist, LH	73 Kubes, RT
28 Hofland, LH	76 Swisher, LT
32 Johnson, G., FB	77 Myhra, LT
33 Holme, FB	78 Holz, LT
35 Johnson, D., FB	79 Canakes, RT
36 Baumgartner, FB	80 Rog, RE
40 Goode, RH	81 Rutford, RE
41 McNamara, RH	82 Fischman, LE
42 Heinz, RH	84 Jacobson, RE
44 McNamara, RH	85 Koeneke, RE
45 Purmort, RE	86 McElroy, RE
46 Sullivan, RH	87 Kapotas, LE
48 Meighen, RH	88 Soltau, LE
50 Stamschror, C	89 Smith, LE
51 Frye, C	91 Rossman, LG
55 Knippenberg, C	92 Weisbrod, RG
56 Reis, C	93 McLeod, LE
57 Helgeson, C	97 Ammentorp, LT

CHESTERFIELD
BEST FOR YOU

"RED-HOT" FAVORITE

**WITH SPORT FANS
EVERYWHERE!**



"Dinner-Quality" meat makes

**SWIFT'S PREMIUM
FRANKS** *America's favorite!*

The luscious links you're now enjoying are that coast-to-coast favorite, Swift's Premium Franks. They're extra-good because every tasty bite is all "Dinner-Quality" meat—*tender beef and juicy pork*. Always delicately, carefully seasoned to assure the *same delicious flavor*. And just as rich in body-building, high-quality proteins as more costly cuts of meat. Your best bet for barbecues and speedy, hearty suppers.



**Plump!
Tender!
Juicy...**

AND MADE FRESH DAILY FROM COAST TO COAST!



Twin Cities' handiest spot for

STEEL

- Reinforcing—Wire Mesh—Fabricated Structural—Bar Joists— Roof Deck—Windows
- PACAL Grader Blades, Scraper Blades, Bulldozer Blades and Snowplow Blades
- Galvanized and Hot Rolled Sheets, Corrugated Roofing Steel Angles, Bars, Beams and Channels
- Black Annealed Wire—Nails
- Snow Fence Posts, 1.33 pounds per ft. with and without anchors
- Sign Posts, 2.25, 2.60, and 2.75 pounds per ft.
- Hammers for Feed Mills



Write Department 0000 For Our Complete Stock List Showing More Than 15,000 Items.



PAPER-CALMENSON & COMPANY

COUNTY ROAD B AND WALNUT ST. . . . ADJOINING HIGHWAY 36, ST. PAUL 8, MINN. TELEPHONE NESTOR 9456

INDIANA UNIVERSITY FOOTBALL ROSTER

No.	Name	Pos.	Age	Ht.	Wt.	Class	Hometown
**16	Jerry Ellis	RH	21	5-9	170	Senior	New Castle
17	George Crowe	FB	19	5-11	190	Soph.	Highland (Griffith)
18	James Stone	RH	19	5-11	165	Soph.	Whiting
*23	Don Domenic	QB	20	6-1	175	Junior	Latrobe, Pa.
**25	Florian Helinski	QB	20	5-10	170	Junior	Hurley, Wis.
26	Thomas Cassidy	QB	19	5-10	170	Soph.	Chicago (Mt. Carmel)
27	Ray Bragalone	QB	22	6-2	175	Senior	Campbell, O.
31	Robert Peake	FB	21	5-10	191	Junior	Peoria, Ill.
32	Charles Young	FB	20	6-0	200	Soph.	Patterson, N.J. (E. Side)
35	David Rogers	RH	19	6-0	195	Soph.	Warren, O.
36	Edward Slosky	RG	21	5-10	188	Junior	California, Pa.
*37	Tom Dailey	LG	20	5-11	185	Junior	New Castle
**40	William Holzbach	LH	22	5-10	175	Senior	E. Chicago (Roosevelt)
42	John Gentile	FB	20	5-11	190	Soph.	Struthers, O.
*43	Lester Kun	FB	20	6-0	186	Soph.	Chicago (Fenger)
45	George Bell	RH	21	5-11	190	Junior	Gary (Froebel)
**46	Bobby Robertson	LH	24	5-10	190	Senior	South Bend, Ind.
47	Joseph Bodart	LE	21	6-1	180	Junior	Westville, Ill.
*49	John Bartkiewicz	FB	21	6-0	185	Soph.	Chicago (Tilden Tech.)
**51	Charles Razmic	C	22	5-10	191	Senior	Homestead, Pa.
*52	James Vesel	C	21	5-11	190	Junior	South Bend (Central)
53	Wayne Ethridge	C	18	5-11	195	Soph.	Riverdale, Ill. (Th'nton)
55	Brock Strom	C	19	6-0	200	Soph.	Ironwood, Mich.
60	Daniel Coughlin	RG	22	5-11	205	Soph.	Rochester, N. Y. (Aq'nas)
*61	Richard Barnhart	LG	23	6-0	185	Junior	South Bend (Central)
**64	John Connors	LT	21	5-11	205	Senior	Chicago (St. Patrick)
65	Louis Kollias	LG	20	6-0	200	Soph.	Elizabeth, Pa.
66	Thomas Hall	LG	20	5-9	215	Soph.	Springfield, Pa.
*68	Ken Schermer	RE	21	6-0	185	Junior	Pekin, Ill.
69	Theodore Karras	RG	19	6-1	200	Soph.	Gary (Emerson)
71	Ernest St. Jacques	LT	20	6-2	201	Soph.	Laconia, N. H.
72	Robert Skoronski	RT	19	6-3	215	Soph.	Derby, Conn.
**73	Harry Jagielski	RT	21	5-11	215	Senior	Chicago (Tilden Tech.)
**75	Nate Borden	RE	21	6-0	197	Junior	Jersey City, N. J.
76	Kent Landefeld	LT	21	6-2	210	Junior	Connellsville, Pa.
*79	Conney Kimbo	LT	22	6-1	200	Junior	McKeesport, Pa.
80	Ronald Rauchmiller	RT	20	6-1	215	Soph.	Maplewood, N. J.
**81	Paul Kobulnicky	LE	22	5-11	175	Senior	McKeesport, Pa.
82	Dewey Alverson	RE	19	6-2	190	Soph.	Rossville, Ga. (Lakeview)
**85	John Zuger	RE	23	5-11	185	Senior	Homestead, Pa.
86	Leroy Moon	LG	21	6-1	190	Junior	Indianapolis (Manual)

*Major Letters Won

PROGRAM OF EVENTS

INDIANA vs. MINNESOTA

November 7, 1953

12:00 Noon Gates Open	1:28 p.m. Field Clear
12:00-1:05 p.m. Music	1:30 p.m. Kickoff
12:50-1:15 p.m. Squads Warm Up	Half — See Clock
1:05-1:15 p.m. Entry of Minnesota Band	15:00-7:00 Minnesota Band
1:15-1:16 p.m. Introduction of Cheerleaders	7:00-2:00 Introduction of Homecoming King and Queen
1:16-1:18 p.m. Flag Ceremony	2:00 Field Clear
1:18-1:22 p.m. Band	0:00 Kickoff
1:22-1:30 p.m. Announcements	

The Official Watch for Timing Today's Game is Longines—"The World's Most Honored Watch."

UNIVERSITY OF MINNESOTA ROSTER

No.	Name	Pos.	Age	Ht.	Wt.	Class	Home and High School
**10	Giel, Paul (Captain)	LH	20	5-11	185	Senior	Winona
*12	Schmitt, Max	QB	20	6	170	Junior	Grand Rapids, Michigan
14	Krohnfeldt, Jerome	QB	19	6	179	Soph.	Alexandria
*15	Cappelletti, Geno	QB	20	5-11	178	Junior	Keewatin
18	Sauer, Dave	QB	21	5-8	160	Soph.	St. Cloud
19	LaPage, Richard	QB	18	6-1	180	Soph.	International Falls
20	Meredith, Robert	LH	18	5-8	160	Soph.	Mpls. (Southwest)
21	Jennett, Duane	LH	21	5-9	155	Soph.	Montevideo
22	Arthur, Don	LH	19	5-10	170	Junior	Mankato
24	Yackel, Kenneth	RE	23	5-10	180	Soph.	St. Paul (Humboldt)
25	McMahon, Michael	LH	20	5-10	160	Junior	Iron River, Michigan
*26	Quist, Dale	LH	20	5-10½	175	Junior	Lonsdale
28	Hofland, Neil	LH	18	5-9	155	Soph.	Chisago City
*32	Johnson, Gary	FB	22	5-10½	185	Junior	Mpls. (South)
**33	Holme, Melvin	FB	21	5-11	205	Senior	Stambaugh, Michigan
35	Johnson, Donald	FB	18	5-11	195	Soph.	Grove City
**36	Baumgartner, John	FB	20	6-1	200	Junior	Bismarck, No. Dakota
*40	Goode, Ralph	RH	20	5-8	170	Junior	Madelia
41	McNamara, Richard	RH	20	5-9	168	Soph.	Hastings
42	Heinz, Ed	RH	21	5-9	180	Sr.	Hastings
**44	McNamara, Robert	RH	22	6	190	Junior	Hastings
45	Purmort, John	RE	25	6-1½	178	Soph.	Anoka
**46	Sullivan, Mike	RH	20	5-11	180	Junior	Mpls. (Roosevelt)
**48	Meighen, Joe (Buzz)	RH	20	6-1	185	Junior	Preston
*50	Stamschror, Charles	C	20	6	198	Junior	Kellogg
51	Frye, Vernon	C	20	6-2	193	Junior	Big Falls
55	Knippenberg, Robert	C	22	6	203	Soph.	St. Paul (Monroe)
56	Reis, Robert	C	18	6	191	Soph.	St. Paul (Cretin)
**57	Helgeson, Jerry	C	19	6-3	215	Junior	St. Cloud
60	Garbe, William	LG	19	6	200	Soph.	So. St. Paul
61	Stannard, James	LG	18	6	195	Soph.	Williston, No. Dakota
*62	Rau, Jerry	RG	20	5-8	195	Junior	Prior Lake
*64	Kauffmann, Richard	LG	21	5-11	188	Senior	Robbinsdale
**66	Coates, Harry	RG	22	6-1	200	Senior	Yankton, So. Dakota
*67	Hagemeister, Bob	LG	25	6	200	Soph.	Manfred, No. Dakota
*68	Elton, Burnham (Rocky)	LG	20	5-10	200	Junior	Fergus Falls
69	Falls, Mike	RG	18	6-1	211	Soph.	Bemidji
*70	Andrus, Clinton	RT	20	6-3	215	Junior	Mpls. (Southwest)
**71	Hansen, Ron	LT	21	5-11	215	Senior	Northfield
72	Smith, Alonzo	LT	18	6	200	Soph.	Sioux Falls, So. Dakota
*73	Kubes, Charles	RT	22	6-1	228	Junior	Northfield
76	Swisher, Robert	LT	19	6-3½	204	Soph.	Mpls. (West)
77	Myhra, Steve	LT	19	6-1	215	Soph.	Wahpeton, No. Dakota
**78	Holz, Gordon	LT	20	6-4	215	Junior	Rosemount
**79	Canakes, Stavros	RT	22	6-1	220	Senior	Mpls. (Southwest)
80	Rog, Frank	RE	22	5-11	180	Senior	Mpls. (Edison)
*81	Rutford, Robert	RE	20	6	191	Senior	St. Paul (Murray)
82	Fischman, Kenneth	LE	19	6	187	Soph.	Mpls. (St. Thomas)
84	Jacobson, Robert	RE	22	6-1	195	Soph.	Cloquet
85	Koeneke, Franz	RE	18	6-2	205	Soph.	St. Paul (Murray)
*86	McElroy, Phillip	RE	20	6-3	185	Junior	Preston
87	Kapotas, John	LE	22	6-2	195	Soph.	Mpls. (West)
*88	Soltau, James	LE	21	6-2	185	Junior	Duluth (Central)
89	Smith, Ronald	LE	20	6-1	190	Junior	Canby
91	Rossmann, Ed	LG	21	5-11	190	Soph.	Duluth
92	Weisbrod, Thomas	RG	18	6-2	210	Soph.	Montevideo
93	McLeod, Robert	LE	25	6	190	Soph.	Onamia
97	Ammertorp, Ray	LT	23	6-1	200	Junior	Withee, Wisconsin

*—Winners of one letter
 **—Winners of two letters

This Winter in Williams Arena . . .

BASKETBALL

Captain Ed Kalafat, All-American Chuck Mencil, Buzz Bennett, Glen Reed, Bob McNamara and others are back from the great Gopher outfit that whipped Indiana's National and Big 10 champions in the 1953 finale.



Chuck Mencil, guard

REMEMBER—THE SEASON TICKET SALE OPENS NOVEMBER 9

Getting in EARLY with your order means BETTER SEAT LOCATION . . . a \$4.25 SAVING on each season ticket . . . PARKING ADVANTAGES.

Here is the "Dope"

SAVINGS AND BETTER SEAT LOCATIONS—The actual face value of tickets to Minnesota's 11 home games is \$19.25. The *special* price for a season book is \$15.00. And they will admit you to main floor seats between the baskets and equipped with back rests—the best possible location in the world's finest basketball arena.

PARKING ADVANTAGES—As the purchaser of one or more season tickets to Minnesota's home basketball games you are *guaranteed* parking space in one of three University parking lots nearest Williams Arena—lots 1—2—7.

To assure yourself these advantages, REMEMBER NOVEMBER 9. That is the day Season Ticket mail order sales open.

Tear and Mail

Name, Address and Postal Zone		UNIVERSITY OF MINNESOTA ATHLETIC DEPARTMENT 1953-54 Basketball Season Ticket Application MAIL ORDERS OPEN MONDAY, NOV. 9	
11 HOME GAMES WILLIAMS ARENA Indicate Seat Preference and Parking Choice <input type="checkbox"/> Last Year's Seats <input type="checkbox"/> Last Year's Seats or Better <input type="checkbox"/> High <input type="checkbox"/> Low Parking Lot Choice Lot No. 1 <input type="checkbox"/> Lot No. 2 <input type="checkbox"/> Lot No. 7 <input type="checkbox"/> Space Limited—Filled in order of application	SAVE \$4.25	Regular Single Game Price Including Tax \$19.25 SEASON TICKET Reduced Price \$12.50 Federal Tax 2.50 TOTAL \$15.00	
			_____ Season Tickets @ \$15.00 \$ _____ Insurance and Postage _____ .25 Total Remittance \$ _____
All season tickets on Main Floor, seats with back rests.			
Athletic Ticket Office, University of Minnesota, Minneapolis 14, Minnesota			
Mail Orders close Saturday, November 28			
Date	Sec.	Row	Seats

AT ITS BEST

There are some pleasing newcomers, too, including Dick Garmaker, All-American Junior College star from Hibbing.

This means more outstanding basketball for Gopher fans this season.

NEVER A BETTER SCHEDULE

Coach Ozzie Cowles of the Gophers has arranged a home schedule that all real basketball fans will heartily approve.

The non-Conference contests before New Year's bring TULSA, OKLAHOMA A. & M., COLORADO UNIVERSITY, and MARQUETTE — each an established power in its league — to Williams arena.

THEN — It's INDIANA'S great NCAA and Big 10 champions with a full complement of returning veterans kicking off Minnesota's Conference campaign in Williams Arena on January 9. All who saw Minnesota's sensational 1953 triumph over the Hoosiers (the only setback they suffered in Big 10 play) won't want to miss on January 9. PURDUE, MICHIGAN STATE, IOWA, MICHIGAN, NORTHWESTERN, and WISCONSIN follow in order.

And More, Too

Again this winter there will be high school preliminaries to each home Minnesota game featuring the State's best prep teams.

And Coach Wally Johnson of the Gopher wrestling squad invites you to remain after three of the games to watch his powerhouse wrestling squad in action — at no extra charge.

There Is a Winter of Great Attractions Ahead in Williams Arena

FOLLOW THE GOPHERS

1953-54 HOME BASKETBALL SCHEDULE

8:00 p.m.—Minnesota vs.

Mon., Dec. 7—Tulsa University

Thurs., Dec. 10—Oklahoma A & M

Sat., Dec. 19—Colorado University

Wed., Dec. 23—Marquette

Sat., Jan. 9—Indiana

Mon., Jan. 25—Purdue

Sat., Jan. 30—Michigan State

Sat., Feb. 13—Iowa

Mon., Feb. 22—Michigan

Sat., Feb. 27—Northwestern

Sat., March 6—Wisconsin

HIGH SCHOOL PRELIMS—6:25 P.M.

Faribault vs. Wayzata

Cambridge vs. St. Paul Wilson

Hibbing vs. Pipestone

St. Louis Park vs. Chisholm

Duluth Denfeld vs. Jackson

St. Paul Humboldt vs. Elbow Lake

Bemidji vs. Fergus Falls

Mpls. North vs. LaCrosse Logan

St. James vs. Minnehaha Academy

Welcome vs. Melrose

Freshman Inter Squad Game



Captain Ed Kalafat, center



Buzz Bennett, guard

WHERE DO THE FOOTBALL GOPHERS COME FROM?



MINNESOTA'S CUMULATIVE FOOTBALL STATISTICS—1953

RUSHING	Times Carried	Yards Gained	Yards Lost	Net Gain	Ave.	TD	PAT Att.	PAT Made	FG	Total Points
Giel, LH	133	680	136	544	4.2	6	0	0	0	36
Baumgartner, FB	25	82	0	82	3.6	0	0	0	0	0
Holme, FB	26	86	11	75	2.9	0	0	0	0	0
McNamara, RH	39	184	10	174	4.5	0	0	0	0	0
Cappelletti, QB	19	28	21	7	.3	2	13	11	0	23
Swanson, QB	1	1	0	1	1	0	0	0	0	0
Quist, LH	21	61	11	50	2.4	2	0	0	0	12
Schmitt, QB	1	0	22	-22	-22	0	1	0	0	0
G. Johnson, FB	9	23	0	23	2.6	0	0	0	0	0
Sullivan, RH	9	27	1	26	2.9	0	0	0	0	0
Meighen, RH	2	3	0	3	1.5	0	0	0	0	0
McMahon, LH	1	5	0	5	5	0	0	0	0	0
TOTALS	286	1180	212	968	3.4	10	14	11	0	71

PASSING	Att.	Comp.	Int.	Yds.	Pct.	TD Passes
Giel, LH	57	30	3	360	.526	3
Cappelletti, QB	28	9	3	145	.321	1
Schmitt, QB	3	1	1	2	.333	0
McNamara, RH	1	1	0	-1	1.000	0
Quist, LH	6	5	1	73	.833	0
McMahon, LH	1	0	1	0	.000	0
Heinz, QB	1	0	0	0	.000	0
TOTALS	97	46	9	579	.474	4

PASS RECEIVING	No.	Yards Gained	TD Passes
Cappelletti, QB	5	32	0
Rutford, RE	2	15	2
Soltau, LE	11	149	0
R. Smith, LE	4	79	0
Kapotas, LE	1	6	0
Sullivan, RH	2	11	0
G. Johnson, FB	1	2	0
Swanson, QB	1	13	0
McNamara, RH	10	153	1
Giel, LH	2	19	0
McElroy, RE	2	13	1
Holme, FB	2	31	0
Goode, RH	2	31	0
Rog, RE	1	25	0
TOTALS	46	579	4

PUNTING	No. Punts	Total Yards	Average
Cappelletti, QB	17	611	35.9
Giel, LH	13	411	31.6
Quist, LH	4	178	44.5
Schmitt, QB	1	48	48
Heinz, QB	1	35	35
TOTALS	36	1283	35.6

Enjoy a Bag of

"Perfection"

BRAND

Salted-in-the-Shell PEANUTS

PACKED IN FOIL

Manufactured by

SACHS NUT AND SHELLING CO.
MINNEAPOLIS, MINNESOTA

BUY PEARSON'S NUT GOODIES

FAMOUS SINCE 1912

PEARSON CANDY COMPANY

ST. PAUL, MINN.

On Sale in Concession Stands in Stadium
Concourse



Autographed Souvenir Picture

Now—great new sets
with the greatest
Automatic yet!

RCA Victor Television

with Rotomatic Tuning



CLICK—there's your station!

More to see

More detail—a stronger and sharper picture wherever you live! The MAGIC MONITOR *automatically* screens out static and interference.

More stations—with television's tremendous new expansion.

...and less to do!

Less "dialing"—every station *pre-tuned*; all automatic on one knob.

Less "adjusting"—the MAGIC MONITOR *automatically* holds the finest sound and picture.



Above, the CRAIG in rich ebony finish. Price includes Federal Excise Tax and full-year picture tube warranty. Model 17S349,

\$189.95

More to see! Less to do! New *Rotomatic Tuning* brings you these 2 exclusive RCA Victor advances:

1. The great new Rotomatic Tuners! You *automatically* pin-point your program with new accuracy, new precision. Turn *one knob*—there's your station!
2. The famous MAGIC MONITOR Circuit System! *Automatically* "monitors" the whole show. *Automatically* ties in finest "Golden Throat" sound

to clearest picture, screens out static and interference, controls power level. You'll see a stronger, sharper picture. And you'll see the handsomest choice of cabinets in television's entire history.

TUNE IN!

Channel 11 WTCN-TV
"Football Predictions"
Every Wed. at 7 p.m.

Channel 5 KSTP-TV
"Big Ten Highlights"
Every Sat. at 10:45 p.m.

Suggested list price shown, subject to change without notice.

FOR A FREE DEMONSTRATION SEE ANY OF THESE RCA VICTOR Dealers:

MINNEAPOLIS
VOLKENANT'S
1119 W. BROADWAY
JOHNSTON'S
3025-29 NICOLLET AVE.

ST. PAUL
McGOWAN'S
23 W. 6TH ST. 799 GRAND
BENIKE'S
473 N. SNELLING 585 UNIVERSITY

Every year more people buy **RCA VICTOR** than any other television  

Tmks. ® Division of Radio Corp. of America



HOOSIER STAR

Florian Helinski, shown giving the foot to the football, is rapidly developing into a top-flight quarterback for Indiana's Hoosiers.

The 5-10, 170-pound junior from Hurley, Wisconsin, was always known as a good punter, having been number one in 1951 and 1952. This year, however, the happy-go-lucky Helinski has been running and passing with equal brilliance and has earned the title "iron man."

Against Ohio State, he played 57½ minutes. He then stayed in for 55 minutes against USC and a full 60 against Marquette. In his two previous Hoosier seasons, Helinski had seen action only 59½ minutes.

Besides doing all the punting, the Indiana burr-head has also been engineering the split-T effectively, carrying the ball more than most quarterbacks, and passing with great success.

Through the first three Hoosier conference games this season, Helinski was third in total offense behind Paul Giel and J. C. Caroline.

PENALTIES

1. Taking more than five times out during either half (except for replacement of injured player).
2. Illegal delay of game.
3. Failure to complete substitution before play starts.
4. Violation of kickoff formation.
5. Player out of bounds when scrimmage begins.
6. Putting ball in play before
15. Team not ready to play at scheduled time.
16. Violation of rules during intermission.
17. Illegal return of suspended player.
18. Interference by member of offensive team with defensive player making pass interception. (Also loss of down.)
29. Striking an opponent with fist, forearm, elbow or locked hands, kicking or kneeling - Mandatory disqualification of offending player plus loss of fifteen yards.
30. Foul within the one yard line - half the distance to the goal.
31. Interference by defensive team

LOSS OF FIVE YARDS

- Referee signals "Ready-for-play".
7. Failure to maintain proper alignment of offensive team when ball is snapped. Also, backfield man illegally in motion.
 8. Offside by either team or encroachment on neutral zone.
 9. Attempt to draw opponents

LOSS OF FIFTEEN YARDS

19. Interference with opportunity of player of receiving team to catch a kick.
20. Illegal use of hands or arms by offensive player.
21. Tackling or blocking defensive player who has made fair catch.
22. Roughing the kicker.

OTHER PENALTIES

- on forward pass - passing team's ball at spot of foul and first down.
32. Forward pass being touched by ineligible receiver beyond the line of scrimmage - loss of fifteen yards from spot of preceding down and loss of a down.
 33. Illegal touching of kicked ball

offside.

10. Crawling by runner.
11. Illegal forward pass (includes intentional grounding of forward pass). Also loss of down.
12. Taking more than two steps after Fair Catch is made.
13. Player on line receiving snap.
14. Any violation of the scrimmage formation.
23. Piling up, hurdling, clipping.
24. Tackling player out of bounds, or running into player obviously out of play.
25. Coaching from sidelines.
26. Failure to stop one full second following shift.
27. Defensive holding.
28. Invalid Signal for Fair Catch.

within opponent's ten yard line - touchback.

34. Flagrantly rough play or unsportsmanlike conduct - Mandatory disqualification plus loss of fifteen yards.
35. Eligible pass receiver who goes out of bounds and later touches a forward pass - loss of down.



Jax Round Table Room

Jax Cafe

Famous for Steaks

20th and Univ. N.E.

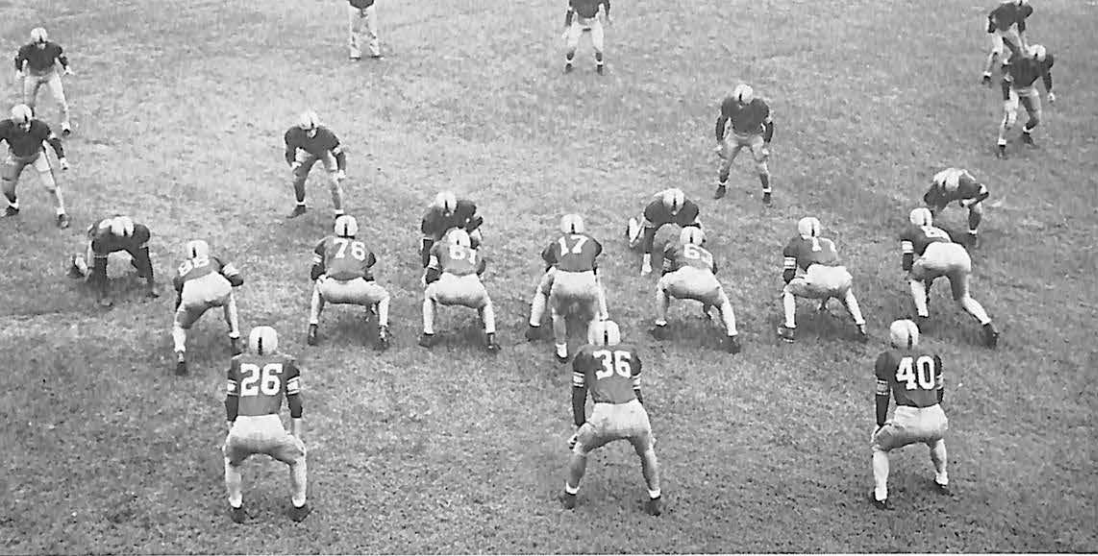
Reservations:
Sterling 1-4395

Featuring
"Lively", the
Lobster
from

Jax Ocean Tank

BUS SERVICE TO ALL GOPHER HOME GAMES

KNOW YOUR FOOTBALL



NOTE: With modern day football being as complex as it is coaches have had to design all types of defenses to counter the "razzle-dazzle" offenses. Fans, as a result, have had many confusing moments.

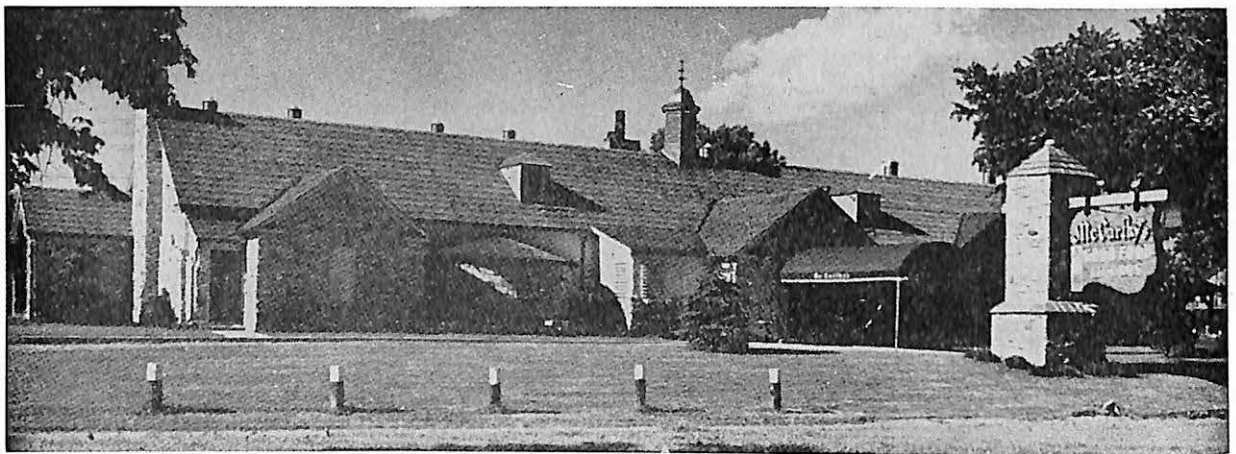
This year our Gopher Goalpost will continue a feature that proved very popular in 1952—Know Your Football.

Know Your Football consisted of five basic offensive patterns last fall. This fall the Goalpost will switch to the defense and picture five basic defensive formations along with a brief description of the advantages and disadvantages of each.

Actually, the defense pictured above, the 4-4-2-1, is a 6-2-2-1 with the ends dropped off the line.

It has all the balance of the 6 and by moving the ends up or dropping them deep, these men may be used to rush the passer or to cover the pass receivers. Against running plays the ends can move into the line as defensive ends, thus making it a six man line, or they can drop off when the run goes away and play the safety position on their side.

Michigan has employed this defense at times as a variation of their 6-2-2-1.



McCARTHY'S CAFE

AT TOWN'S EDGE

5600 WAYZATA BLVD.

ST. LOUIS PARK, MINN.

The Twin Cities Finest Cafe

* * PRIVATE BANQUET ROOMS FOR FOOTBALL PARTIES * *

AIR CONDITIONED

* * * * *

DINNER MUSIC

"Lunch Before—Dinner After"

ORCHARD 5-8866

RIDE OUR BUSES TO ALL HOME GAMES

ORCHARD 5-8866



Frank Rog

WHAT PLAYING FOOTBALL AT MINNESOTA HAS MEANT TO ME

I had always thought I wouldn't have a chance to play football at Minnesota or any other big school so I enrolled at Mankato Teachers College following graduation from Edison High School in 1950.

Although I had played as a freshman and had earned my "M" I quit Mankato and came back to Minneapolis. After being home a short time my girl friend talked to me about going to Minnesota. Pete Guzy, Edison's football coach, also advised me to try Minnesota.

When I started the U in the fall of 1951 I had no intentions of going out for football. Even if I had wanted to play that first year here it would have been impossible because of the Big Ten's transfer rule which makes any transferring athlete ineligible for a full year.

In 1952 I decided to give football a whirl and have never regretted it. One of the finest lessons I've learned from playing football at Minnesota is how to budget my time. There is only a certain amount of time to study, to play football, and so forth, whereas in high school I wasted a lot of time.

My grades during football season are always as good as and usually better than my grades for winter and spring quarters. The friends I've made, learning to cooperate with a group, and the fun of playing have also been worth-while benefits.

For five years I've been doing part-time recreation work at the St. Anthony Community Center. After two years of army duty following graduation I would like to return to Northeast Minneapolis and continue this work.

Before closing I would like to pay tribute to a wonderful friend of all Edison athletes, Mrs. Helen Curry. Mrs. Curry teaches ninth grade social studies and has helped us many times with our studies and also financially. All former Edisonites are very grateful to her.—*Frank Rog*

CALL

MAin 7171

FOR INSTANT TAXI SERVICE

Sit Back, Enjoy Your Ride as You Enjoy These Games

**Radio Equipped 7-Pass. Limousine Taxicabs
Designed for Comfort and Safety**

Giving Minneapolis 37 Years of Continuous Service

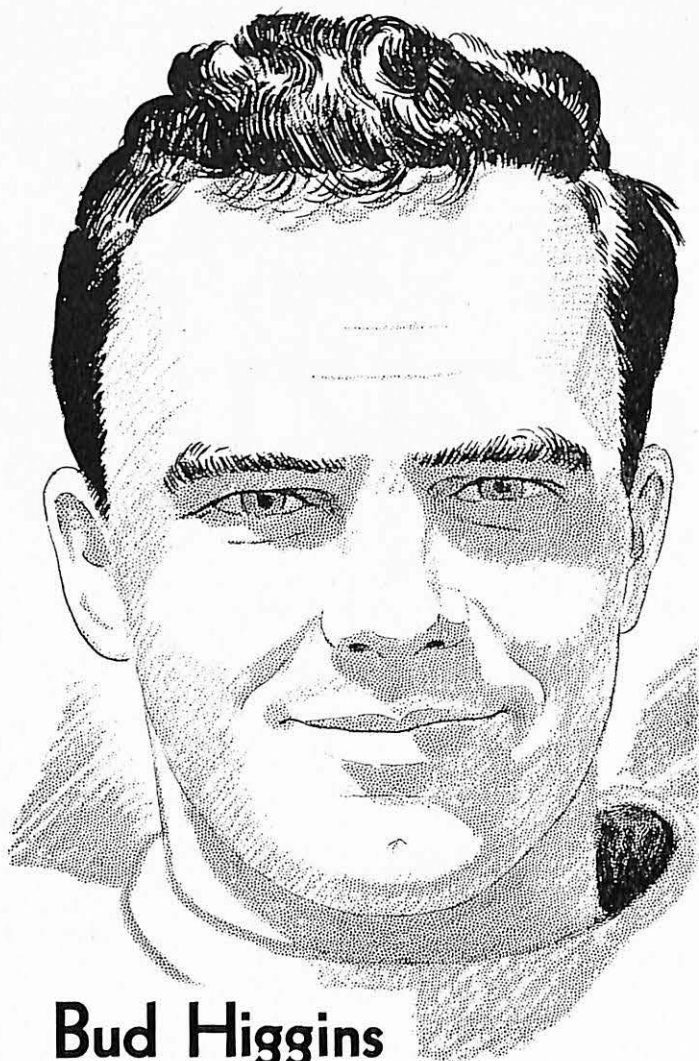
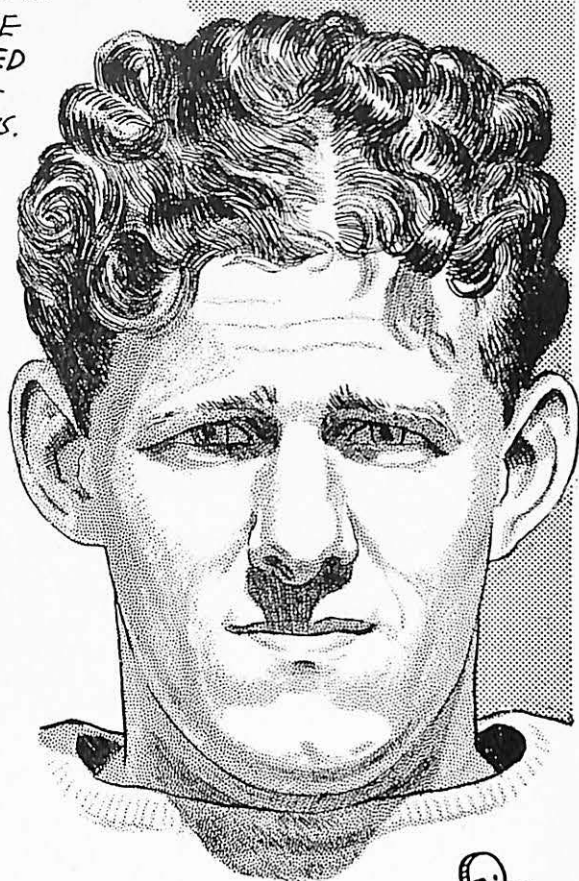
**YELLOW TAXI COMPANY
OF MINNEAPOLIS**

CABS AT WASHINGTON AVE. SIDE OF STADIUM (SOUTH TOWER)

Reminiscing with Bernie.....

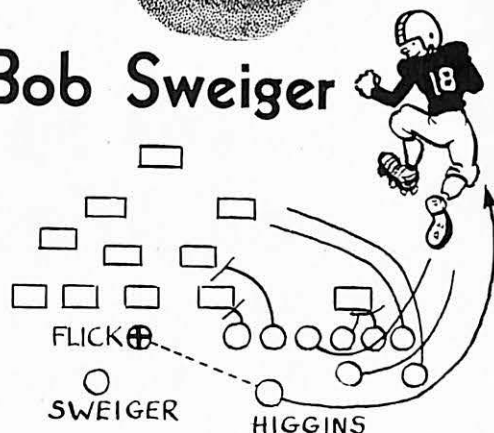
TRAILING 7-2 IN THE THIRD PERIOD OF THE 1941 GAME WITH NORTHWESTERN THE GOPHERS STAGED THE PLAY THAT IS CALLED THE MOST DECEPTIVE IN GOPHER HISTORY - THE PLAY WITH 63,000 DIFFERENT VERSIONS.

"ON THE PREVIOUS PLAY, THE BALL HAD BEEN DOWNED NEAR THE SIDE-LINES. AS THE REFEREE CARRIED THE BALL TO THE SIDELINE STRIP, OUR TEAM LINED UP CASUALLY AND ASSUMED CARELESS LOOKING STANCES... AS SOON AS THE BALL WAS PLACED, OUR CENTER PASSED IT TO BUD HIGGINS WHO SWUNG TO THE RIGHT AND WENT ALL THE WAY FOR THE TOUCHDOWN!"



Bud Higgins

Bob Sweiger



"THE NW TEAM WAS NOT IN POSITION. JUST BEFORE THE BALL WAS PASSED, BOB SWEIGER WAS STANDING AND TALKING TO THE NW PLAYERS... THE LINEUP AS THE BALL WAS PASSED WAS AS SHOWN ABOVE." FINAL SCORE WAS MINNESOTA 8 NORTHWESTERN 7.

-BILL ALLEN

In this series in your Gopher Goalpost, Cartoonist Bill Allen relives with Bernie Bierman the highlights of his coaching career at Minnesota.



it takes dependable MEN to build dependable MACHINES

If you could take a trip through all five of the Minneapolis-Moline factories, and if every member of the MM Old-Timers Club were wearing his pin . . . you'd find that well over ten per cent of the approximately 8,000 MM employees have given more than 20 years of their lives toward building MM Modern Machines. You'd discover that such a tenure record proves "*MM is a good company to work for.*" And, you'd learn that dependable MM employees *build* dependability into MM Tractors, Farm Machinery and Power Units. In fact, you'd probably agree that for *progressive engineering, quality production, and the kind of knowledge it takes to provide top-value machinery . . .* there's just no substitute for experience, and MM people have it!



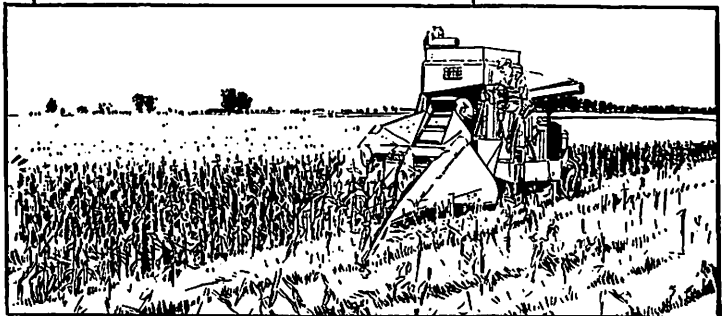
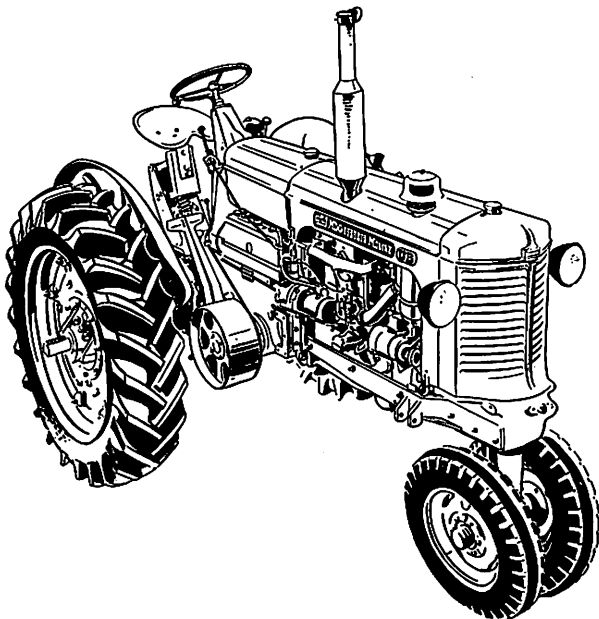
ACTIVE MEMBERS—MM OLD TIMERS' CLUB (As of January, 1953)

LOCATION	50-Yr.	40-Yr.	30-Yr.	20-Yr.
Lake Street Plant	0	18	108	212
Hopkins Plant	1	21	51	95
Home Office	1	6	24	32
Como Plant	0	2	1	4
New Brighton Plant	0	0	0	2
Moline Plant	0	22	24	58
Louisville Plant	1	13	51	86
Divisions	1	8	11	36
Argentina	0	0	7	8
	4	90	277	533

TOTAL Old-Timers, Company-Wide—904 (active)

This new MM Model UB Tractor is tomorrow's tractor available today! The UB, offering a new high in comfort, power, and safety . . . is another dependable MM machine built by dependable MM men.

Dependable MM men build for the future of farming, too. Typical of advanced MM machines, the Uni-Harvester, at right, harvests corn, grain, seed and bean crops by mounting interchangeable harvesting machines onto the prize-winning MM Uni-Tractor.



MINNEAPOLIS-MOLINE
MINNEAPOLIS 1, MINNESOTA

Inside Cooke Hall . . .

THE PHYSICAL EDUCATION PROGRAM

Closely allied with the Recreation Training Division, last week's Inside Cooke Hall subject, is the Physical Education Area of the Department of Physical Education and Athletics.

Whereas the Recreation program endeavors to train professional recreation workers, the Teacher Education section of the Physical Education Area has as its objective "the training of men to be teachers of physical education and coaches of athletics."

A second section of the Physical Education Area involves the Sports Education classes for general college and college of education undergraduates who are required to take an activity course in such sports as bowling, basketball, touchball, and others, and for other colleges within the university that allow these activity courses to be selected by their students as electives.

Supervisor of this important area is Dr. Louis F. Keller, professor of physical education and assistant director of the Department of Physical Education and Athletics. Eighteen men do the instructing in both sections of the area. Five of them teach full-time and the other thirteen are coaches and trainers who offer courses in their fields.

An idea of the scope of the area can best be obtained by reviewing the staff and the courses they teach.

The five full-time instructors and their specialties

are Dr. Keller, undergraduate and graduate level, including courses in the Introduction to and the History of Physical Education and Administration of Physical Education in Colleges; Dr. Ralph Piper, major adviser for undergraduate work and courses in administration and activities; Dr. Carl Nordly, general supervisor of graduate work and graduate courses in administration and research and an undergraduate course dealing with the Officiating of Sports; Clarence Osell, supervisor of the gymnasium for the physically handicapped in Memorial Stadium and courses in the Mechanics of Movements and First Aid; and Maurice Ostrander, activity courses on the undergraduate level.

Among the coaches who teach on a part-time basis are Dick Siebert (Baseball Fundamentals and Coaching), Joe Vancisin (Basketball Fundamentals), Ozzie Cowles (Basketball Coaching), Wes Fesler, Dick Fisher, and Lyl Clark (Football Coaching), Bud Svendsen (Football Fundamentals), Les Bolstad (Golf Fundamentals), Phil Brain (Tennis Fundamentals), Wally Johnson (Wrestling and Boxing), Lloyd Stein (Care and Prevention of Injuries), and Lloyd Boyce and Neils Thorpe (Aquatics).

Four degrees are offered: a B.S. in education for all undergraduates and an M.Ed., M.A., and Ph.D. on the graduate level. Dr. Keller estimates that 600 men have received B.S. degrees, 200 M.Ed.'s, 12 M.A.'s (only granted since 1948), and 2 Ph.D.'s. The latter two are Manfred Schrupp (1950), now at San Diego Teachers College, and Donald Adee (1952), former track coach at St. Thomas College and currently teaching at Ft. Hays, Kansas, Teachers College.

Ninety-eight undergraduate students are enrolled in the area this quarter and 123 others are active graduate students, many primarily during the two summer sessions. Back in 1946 and 1947 the enrollment reached as high as 250 undergraduates.

Minnesota Physical Education graduates are scattered far and wide today, coaching, teaching, administering athletics and physical education programs, and working in other fields. Some of the most notable are Biggie Munn, football coach at Michigan State; John Roning, football coach at Utah State; Marshall Wells, line coach at Colorado; Wally Hass, athletic director and football coach at Carleton College; Johnson, Svendsen, Butch Nash, and John Kulbitski, of the Minnesota football staff; and Win Brockmeyer, one of the "winningest" high school football coaches in the country. Brockmeyer's Wausau, Wisconsin, teams have won 120, lost only 8, and tied 5 since 1937.



Dr. Louis F. Keller, Professor of Physical Education
and Assistant Athletic Director

SCOTTY MacTAPE SAYS:
 "WATCH FOR MY EXCITING
 NEW CHRISTMAS PROGRAM
 THIS YEAR ON

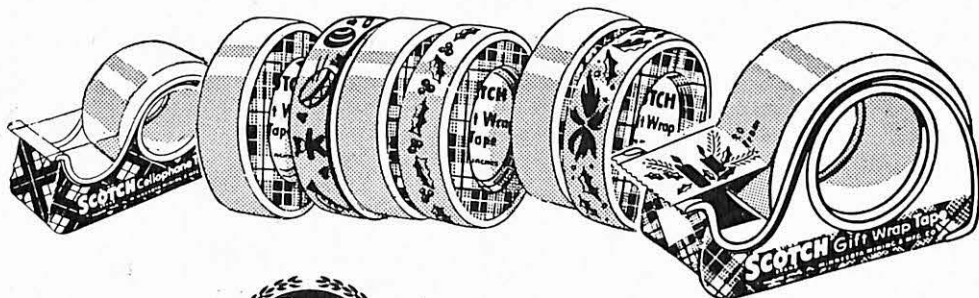
REG. U.S. PAT. OFF.
SCOTCH
 BRAND
Cellophane Tape"

America's No. 1 Household Helper!



LOOK FOR THE MAGIC TREE

Your Favorite Store will have the details



MINNESOTA MINING &
 Saint Paul 6



MANUFACTURING CO.
 Minnesota

Meet Our Cheer-Leaders

Kneeling:

Maryellen Schuck
 Jean Berkwitz
 Romona Rienstra
 Lois Magnuson
 Beverly Bowers
 Joan Carlin
 Shannon Duffy

Bottom Boys:

Bill Frantzich
 Kenneth Christy
 Paul Carpenter

Middle:

Cleve Tucker
 Burton Johnson

Top:

Robert Delvin



**STILL ON A CHAMPIONSHIP TEAM
 NATIONAL CHAMPIONS SIX SUCCESSIVE YEARS
 AND ON THE BALL AGAIN**

The leading agency among the company's
 60 agencies throughout the United States.

BOB BJORKLUND AGENCY MANAGER
 BANKERS LIFE COMPANY
 Des Moines, Ia.

GENE FLICK SPECIAL AGENCY SUPERVISOR
BABE LEVOIR SPECIAL AGENCY ASSISTANT

PIG RESEARCH INCREASES FARMING EFFICIENCY

Those pigs you see above show what research in one field of agriculture has done to increase the efficiency of farming in Minnesota and the nation.

Late last spring the University's Department of Animal Husbandry started an unusual demonstration. Staff members took litter mates (brothers and sisters) from five different litters of pigs. They placed one from each litter on rations typical of 1910 and 1930 and one from each litter on a 1953 ration featuring the University developed "Minnesota Supplement".

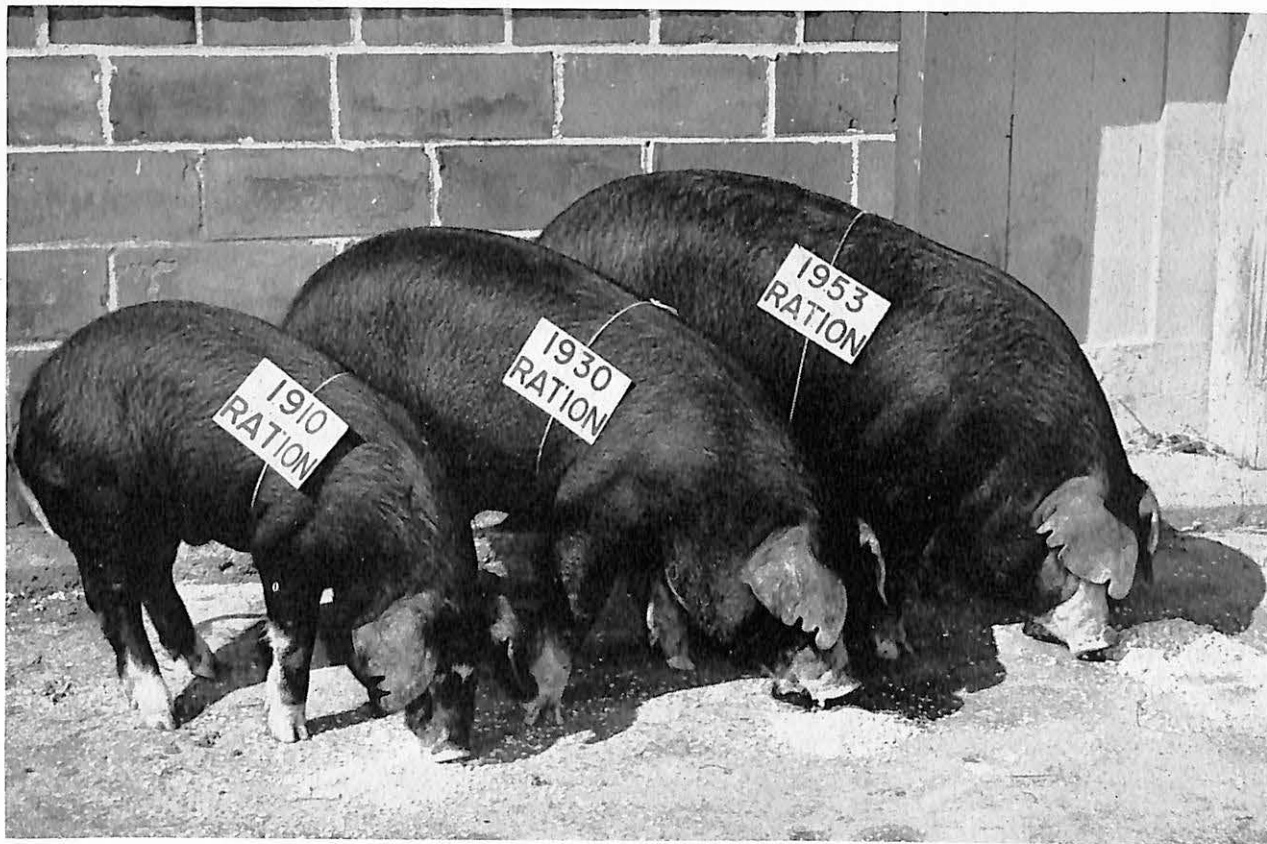
The pigs had the same start until they were nearly two months old, then they went on the experimental rations. The results were amazing! Three months later the 1910-fed pigs had gained only 55 pounds, the 1930-fed pigs 85 pounds, and the 1953-fed pigs 150 pounds.

Figured on the basis of dollars and cents this means that the 1953-ration saves the modern farmer \$9 on every 225-pound pig he raises. Over the entire state this adds up to \$50,000,000 saved each year as a result of modern feeding methods based on research by Universities, such as Minnesota, private companies and others.

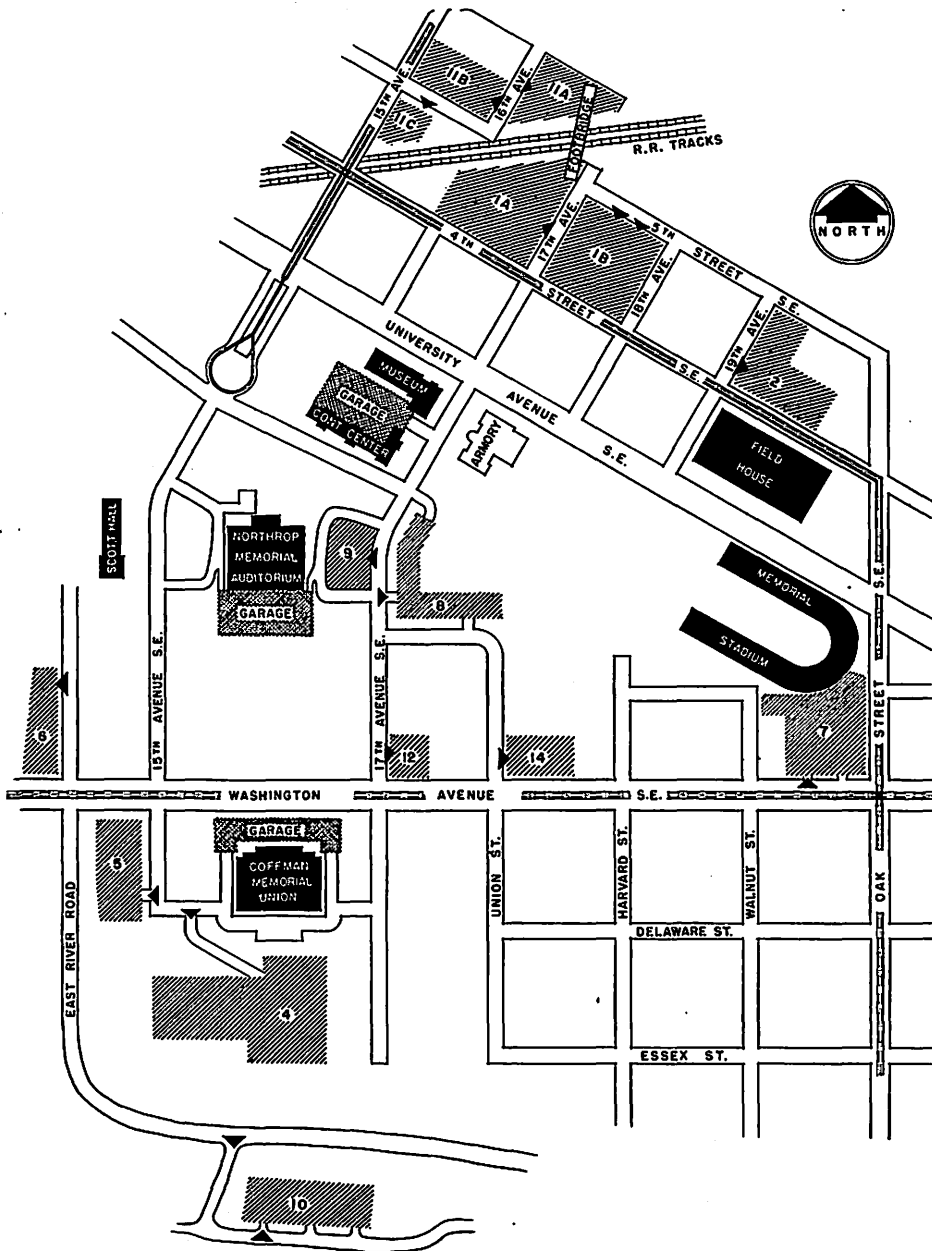
The consumer benefits, too, because without these modern methods of feeding meat prices would be higher than they are today.

Behind this success story are years of painstaking work not only in the University's Institute of Agriculture but also in other parts of the University where basic principles on nutrition, physiology, etc. were developed. The spectacular developments of today are based on the accumulated knowledge of years in many fields.

Demonstration showing difference in litter mates fed on rations typical of 1910, 1930 and 1953. The 1953 pig ration featured a University-developed "Minnesota Supplement."



WE'D LIKE TO HELP YOU TO BETTER PARKING



The above chart shows you the location of the parking lots that are available for your convenience. In order to expedite traffic movements to and from these parking lots, the following traffic schedule has been arranged:

Pre-game traffic:

University Avenue traffic will be one-way Eastbound.
4th Street traffic will be one-way Westbound.

Post-game traffic:

Reversal of pre-game.

It is suggested that those automobiles approaching the stadium from the South make use of parking lots 4, 5, 6, 8, 9, 10, 12, and 14. Those approaching from the North should use lots 1A, 1B, 11A, 11B, and 11C.

Please do not attempt to park in the immediate area of the stadium. There will be no parking space available and automobiles in this area will only congest the traffic situation.

Below is the schedule that will be in effect for the parking lots on football Saturdays.

Lot 1A will open at 9:30 A.M. Parking charge will be 50c.
Entrance on 17th Ave.

Lot 1B will open at 11:00 A.M. Parking charge will be 50c.
Entrance on 5th St.

Lots 2 and 7 will be closed all day except to authorized commercial buses.

Lots 4, 5, and 6 will be open all day for 20c.

Lot 8 will open at 11:00 A.M. Parking charge will be 50c.

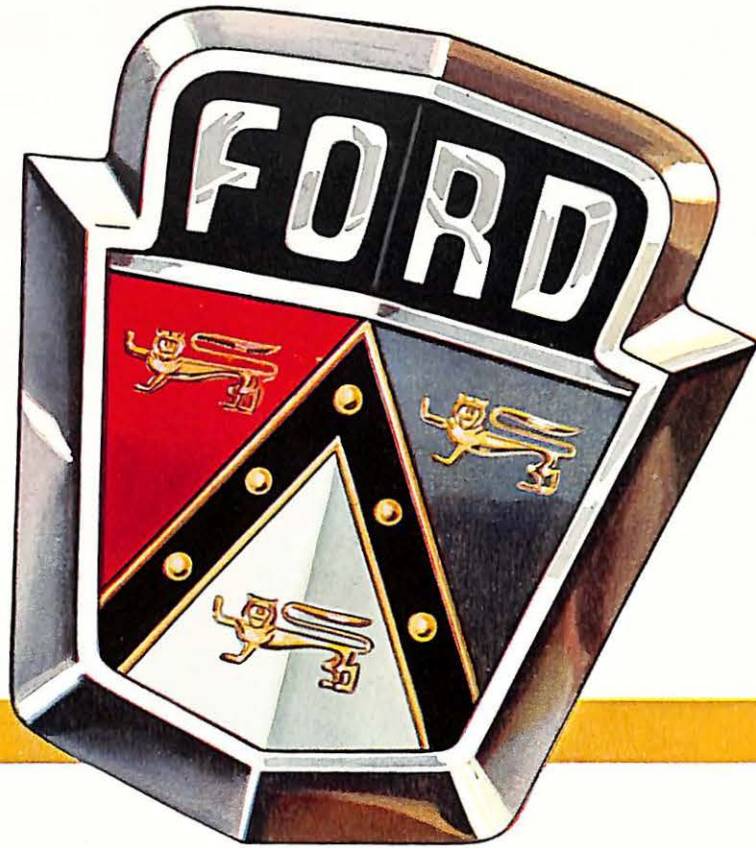
Lot 9 will be open until 11:00 A.M. at 20c after which time the charge will be 50c.

Lot 10 will be open all day for 10c to automobiles and 50c to school buses.

Lots 11A, 11B, and 11C will open at 10:00 A.M. Parking charge will be 50c. A foot-bridge connects these lots with the main part of the campus.

Lot 12 will be open until 11:00 A.M. at 20c after which time the charge will be 50c.

Lot 14 will open at 11:00 A.M. Parking charge will be 50c.
Entrance on Union Street.



FORD

**Worth more when you buy it . . .
Worth more when you sell it!**

SEE YOUR NEAREST FORD DEALER

CAMEL

America's most popular cigarette!



*So Mild -
So Flavorful!*