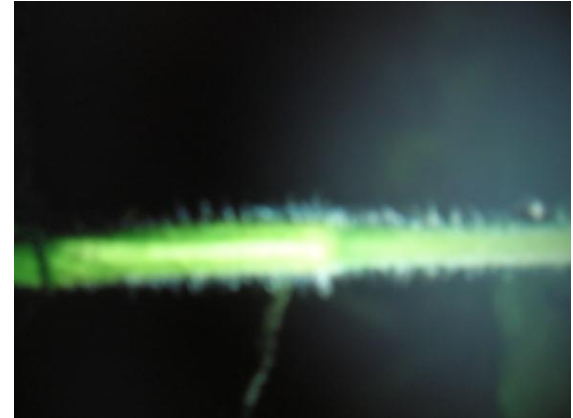


Commelina erecta



- DAYFLOWER,
SLENDER
DAYFLOWER,
WHITEMOUTH
DAYFLOWER,
WIDOWS TEARS,
NARROW LEAF
DAYFLOWER,
HIERBA DEL
POLLO

Characteristics



- Family: Commelinaceae
- Stems: There are many stems emerging from the base. Each stem is very erect, hence it's name.
- The stems and leaves are finely pubescent with often reddish purple shades towards the nodes.

Characteristics con't

- Leaves: Alternate, lanceolate to oblong, entire, glabrous
- Inflorescence: Terminal cymes of about 3 flowers that are surrounded by a folded spathe which join into a basal.
- Flower: 3 petals that are blue and 1 whitish/clear petal beneath. 4 lobed, yellow anthers, the filaments are glabrous and pale yellow. There are 3 unequal stamen and 2 typical stamen that are at the base of the bottom petal. There are 2 or 3 filaments that are a lavender color that curl inward at the apex.



○ Characteristics Con't

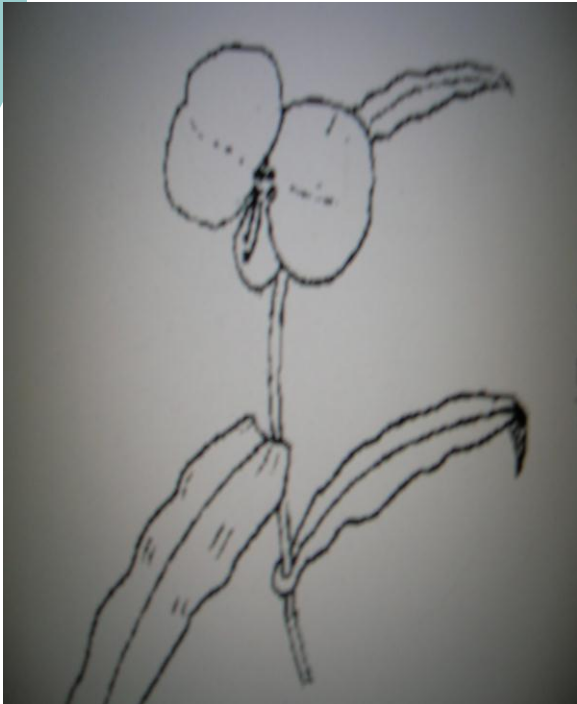
- Herbaceous perennial that can get up to 18 inches.
- *Commelina erecta* flowers from May to October in Minnesota and from March until December in Texas.
- It is native to the United States.
- Habit: It likes ditches, roadsides, sandy or gravelly areas, wooded slopes and other glades, any dry open areas.
- *Commelina erecta* is called the Dayflower because the flowers wither a day after they open during midday.



- Classification:
 - Commelina erecta* L.
 - Kingdom Plantae –
 - Subkingdom Tracheobionta –
 - Superdivision Spermatophyta –
 - Division Magnoliophyta –
 - Class Liliopsida –
 - Subclass Commelinide –
 - Order Commelinales –
 - Family Commelinaceae - Spiderwort fam.
 - Genus Commelina L. Dayflower

 - Species Commelina erecta L. – whitemouth dayflower

Marketing Nitch



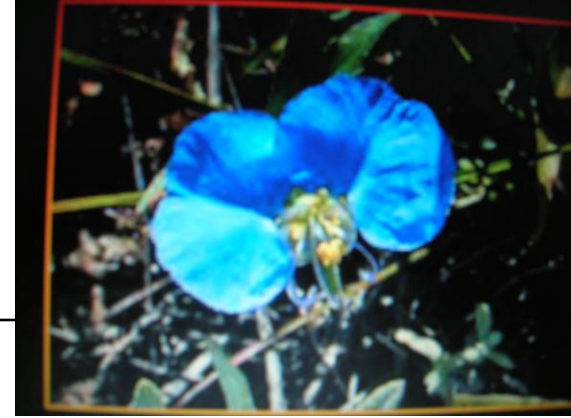
- The dayflower is the perfect plant to sell in a greenhouse. It has amazing true blue color and a very unique looking petal arrangement.
- It flowers all the way into October and is hardy to zone 4.
- This flower can be used for all kinds of holidays such as Mothers day, the 4th of July, Memorial day, Easter, etc...
- The dayflower is also said to be a preferred food source for deer, so it is very good if you are establishing deer feeding plots.
- The Erect Dayflower is also a wonderful plant for native area restoration

Production Schedule

- Growing the seeds is fairly easy except for the fact that the seeds are hard to harvest. Each plant only produces a few seeds and they are hard to get at.
- Transplant cuttings and seedlings 6-8 weeks after germination. Make sure the seedling are at least 6 inches in height before transplanting.
- Germination may take up to 4 weeks.
- Flowering will occur sporadically after transplanting.



ESTABLISHMENT



- Erect Dayflowers can be grown from seeds and cuttings.
- It's germination is 87% when it can receive 12 hours of sunlight at 75 degrees F, and 12 hours of dark at about 50 degrees F.
- The cuttings have about an 80% survival rate with between 1 to 3 node stem cuttings.

MANAGEMENT



- Weed control can be a problem with the Dayflower because it tends to be a long leggy plant that likes to utilize it's surrounding plants as support systems, then when you go to weed the area you have to dig through them. However, with the beautiful flowers it is worth your time!

LITURATURE CITED

- Ajilvsgi, G. 1984. *Wildflowers of Texas*. Shearer Publishing, Fredericksburg, TX.
- Chamrad, A.D. & T.W. Box 1968. "Food habits of white-tailed deer in south Texas." *Journal of Range Management* 21: 158-164.
- Correll, D.S. & M.C. Johnston 1996. *Manual of the Vascular Plants of Texas*. The University of Texas at Dallas, Richardson, TX.
- Drawe, D.L. 1968. "Mid-summer diet of white-tailed deer on the Welder Wildlife Refuge." *Journal of Range Management* 21: 164-166.
- Everitt, J.H., D.L. Drawe, & R.I. Lonard 1999. *Field Guide to the Broad-Leaved Herbaceous Plants of South Texas: Used by Livestock and Wildlife*. Texas Tech University Press, Lubbock, TX.
- Gleason, H.A. & A. Cronquist 1991. *Manual of Vascular Plants of Northeastern United States and Adjacent Canada, 2nd edition*. The New York Botanical Garden, Bronx, NY.
- Jones, F. B. 1982. *Flora of the Texas Coastal Bend*. Welder Wildlife Foundation, Sinton, TX.

Lit. Cited Con't



- Commelina Erecta page
plants.usda.gov/plantguide/doc/pg_coera.doc
- Plant Info Database
www.plantinfo.umn.edu
- (Dayflower) Commelina Erecta
http://www.missouriplants.com/Bluealt/Commelina_erecta_page.html
- Commelina erecta archives
<http://2bnthewild.com/plants/H65.htm>
- Plant Profile for Commelina erecta
- <http://www.lib.ksu.edu/wildflower/erectdayflower.html>