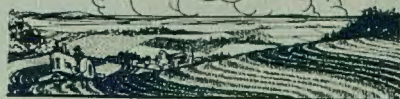


University Farm News
University of Minnesota
University Farm
St. Paul 1 Minnesota

June 8, 1950

Our LAND



Appearing in newspapers of the Minnesota Editorial Association through the cooperation of the U.S. Soil Conservation service and conservation authorities at University Farm.

Prepared and distributed
by the Minnesota Agricultural Extension Service.

For use during the week
of June 12, 1950.

Prepare now for that mid-summer pasture slump by having a liberal acreage of alfalfa-brome-timothy available during late July and August. Ralph Crim, U Farm Extension Agronomist, says to cut the first crop for hay in the bud to early bloom stage. The second crop, which is very nutritious and palatable, will then be ready for a choice supplementary pasture when most needed.

* * * * *

The Dodge county Soil Conservation District supervisors, headed by Klaus Alberts, conducted two tours in May for local school students. The schools provided the buses. The district provided guides and a free lunch.

* * * * *

Proper cultivation can double the growth of young trees. Marvin Smith, U Farm Extension Forester, recommends a spring-tooth digger or duck-foot for shelterbelt trees. Be sure to cultivate during the dry summer months to conserve soil moisture. Weed competition is eliminated, too, at a time when seedlings are being hit hard by sizzling heat.

* * * * *

Einar Lomen, South Goodhue Soil Conservation District cooperator, has his farm conservation plan written in Norwegian. Einar, who came to the United States five years ago to take over a farm left by his uncle, didn't take long to figure out the value of conservation. His plan, developed with the help of farm planner Robert Anderson, was translated into Norwegian by Alf Larson, Wanamingo school principal.

* * * * *