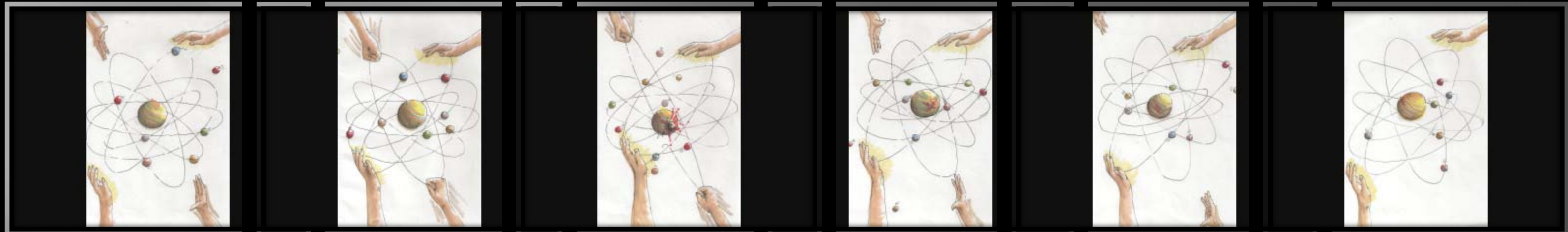


adaptation...

Mexican identity defined



cultural links...negative influences...cultural links...adaptation...

Adaptation defines the Mexican's cultural identity. The positive, negative and neutral influences are integral in making up the cultural identity of Mexican's living in the United States. Mexican cultural identity is represented by the core which is ever changing and adapting due to the shifting balance of the positive and negative influences, that are represented by the rotating protons and neutrons.

The cradling hands represent support through *cultural links*. These include the Mexican peoples cultural roots, religious ideals, appreciation for art, food and music, and most of all, the importance of family. The *cultural links* strengthen the Mexican identity by providing support and comfort to the core.

The other set of hands represent the struggle from the *negative influences*, such as economic inequality, language barriers, discrimination, and the feelings and realities of being a displaced people. The pulling hands cause stress and tension, ultimately breaking the balance. These *negative influences* are constantly pulling at the core of the Mexican's cultural identity.

Adaptation is represented by the absorption of influences which are integrated into the core. The Mexican's *cultural links* help stabilize the core as the Mexican's adapt to the American mainstream. At the same time they maintain an awareness of their own unique cultural identity.

...all areas revolve around the core

Concept:

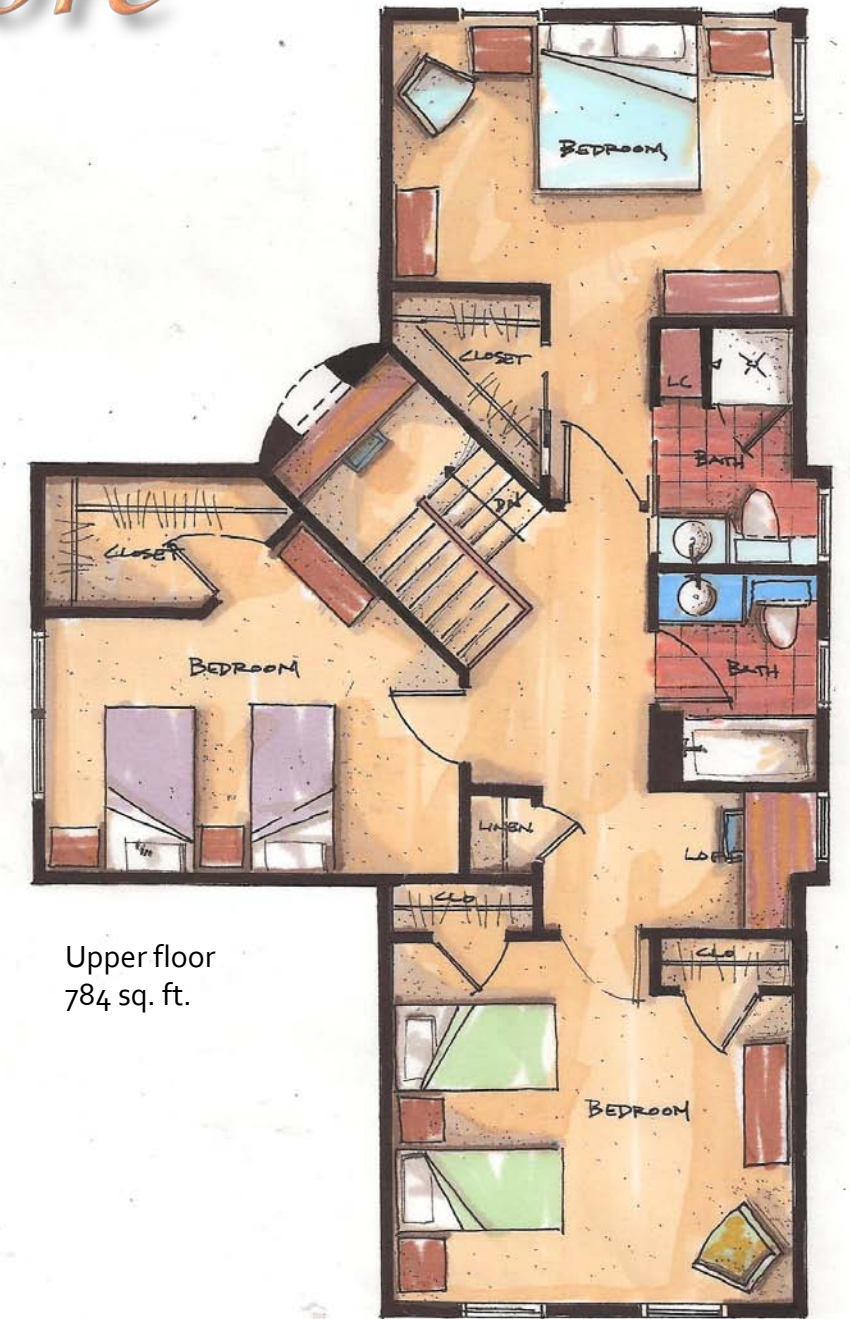
- angled entry draws you to the core and represents the negative outside influences
- curved dining room window and curved exterior fence protect and comfort the Mexican identity
- on the main floor traffic patterns revolve around the core
- entries to living room and main floor bedroom and bathroom areas are "protected" by archways
- stairs lead to the central core where a study area becomes a place for enlightenment
- tile is laid linear to the street and adds to the tension of the angled passageway like the hands that pull at the core. In areas of activity, the tile is once again linear providing stability
- upstairs rooms are laid out linear to the core to provide stability for the private areas
- all bedrooms have direct access to the core

Program:

- An altar is planned in a niche located at the base of the stairs to reinforce the Mexican's religious ideals.
- The living room is large enough to accommodate large family gatherings
- The kitchen is large enough for many family members to gather and cook
- there are many closets for storage
- materials are repeated throughout the house to maintain continuity and affordability



Main Floor
1264 sq. ft.



Upper floor
784 sq. ft.

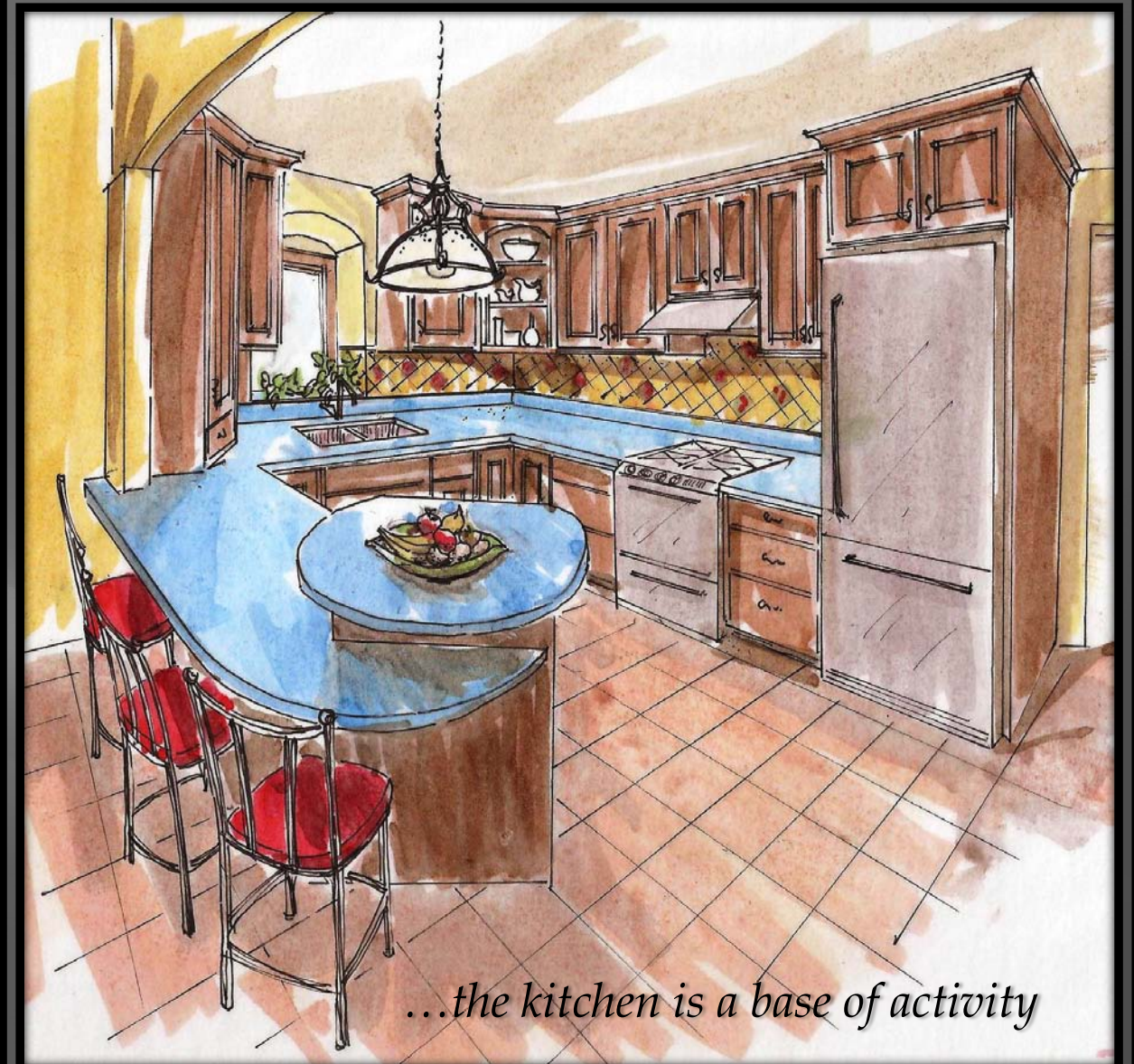
Universal design:

- Main floor bathroom and bedroom
- Main floor laundry
- minimum 36" doorways
- minimum 42" hallways

...social and family activities are connected to the core



...the dining room is a base of socialization



...the kitchen is a base of activity

Concept:

- The portal in the core represents the influences that penetrate the core and lead to adaptation and enlightenment.
- The vaulted ceiling in the dining room represents the negative influences and tensions
- arched openings provide comfort and draw your attention to the core

Program:

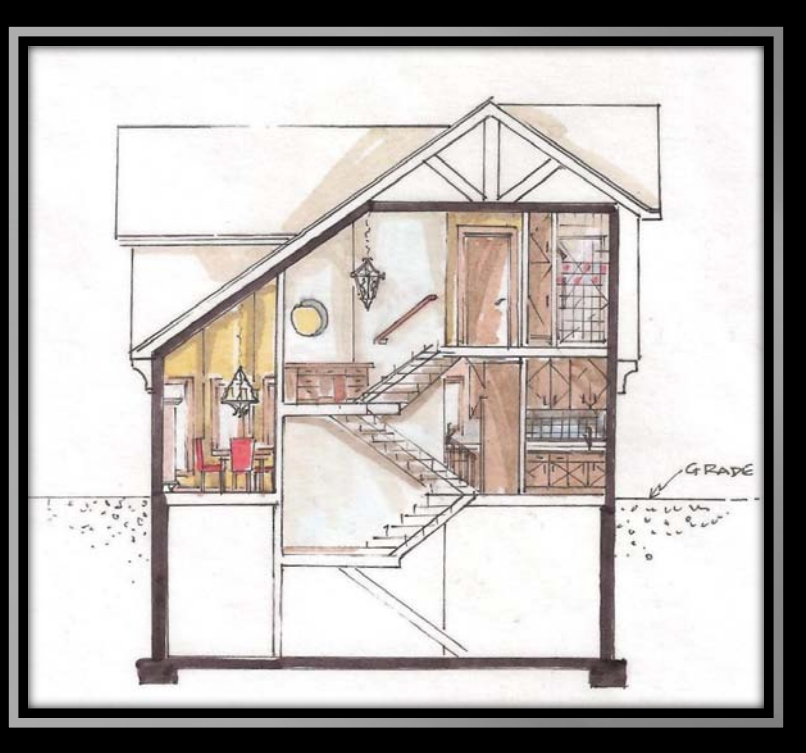
- Vaulted ceilings in dining room add to sense of achievement
- open plan encourages family participation and social interaction
- tile floors and back splashes are reminiscent of the Mexican's cultural roots
- open shelving provides a place to display personal items
- the blue on the core is symbolic of the Mexican's idea of safety and comfort
- the spaces are functional and aesthetically pleasing, a home to be proud of.

Universal design:

- kitchen has multiple counter heights
- range has front controls
- drawers used for accessible storage
- minimum 42" clearances for traffic patterns between rooms

...adapting to the community

...maintaining cultural identity



Section drawing

Front elevation showing existing homes to the south

Kitchen message center



Concept:

- Angled entry represents the negative influences on the core
- cantilevers on upper floors represent the different orbits and energies of the positive and negative influences
- arches comfort and support the private upper floor
- Strong angles shown in the section draw through the core
- The Mexican identity is reinforced with the core as a base of activity

Program:

- views to the backyard connect the Mexicans to the outdoors
- Fenced backyard provides safety and privacy
- covered arbor offers protection from the elements and a place to cultivate plants
- patios in the front and back for socializing
- community center and gardens on adjacent lot give families a sense of community
- traditional exterior prevents alienation from neighbors



Living room entertainment center built ins

Universal Design:

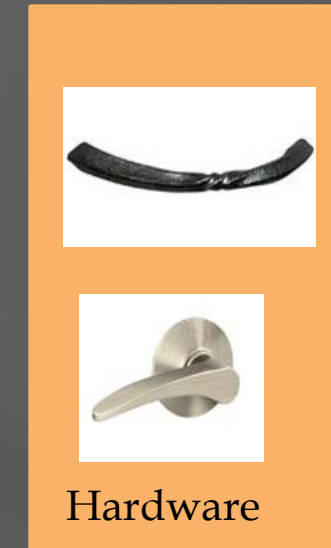
- rear entry is flush for accessibility
- stairway is 36" wide with handrails

Site plan showing adjacent community center and existing house to the south

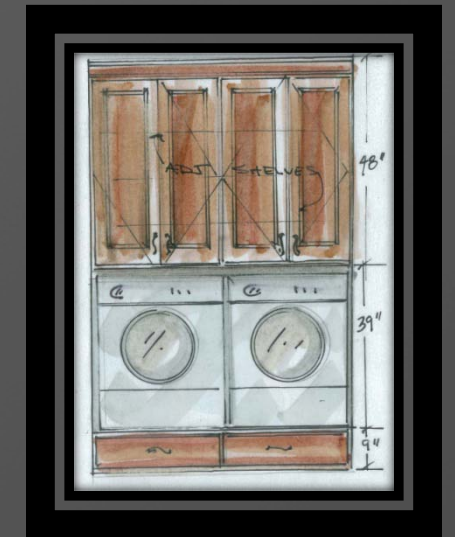
*...sensitive to the unique issues of the Mexican population
 ...reflecting the needs of a diverse population*



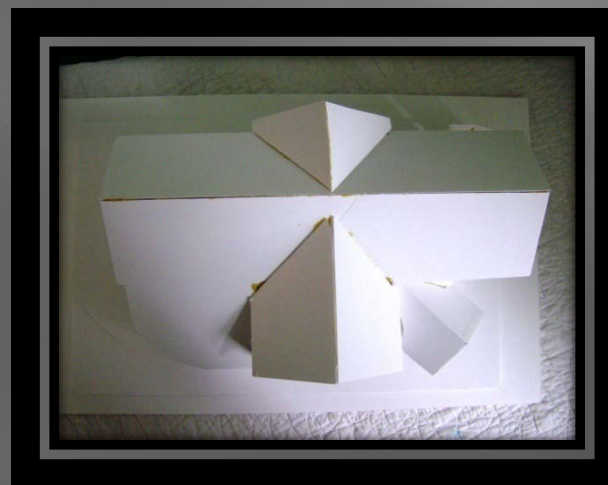
Plumbing fixtures



Hardware

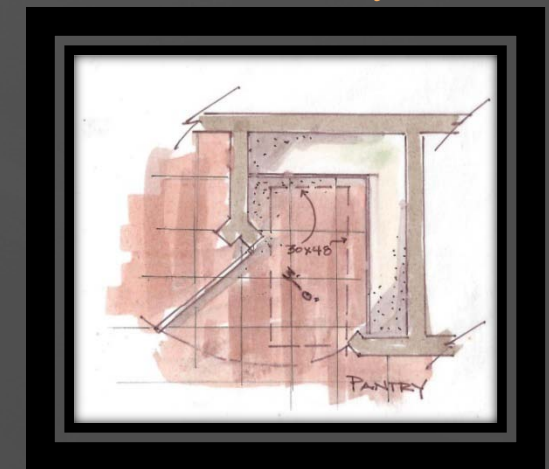


Accessible laundry



Universal design:

- lever handles for door hardware
- cabinet hardware ADA compliant
- single handle faucets
- handheld shower for main floor bathroom
- ADA compliant toilet with low flush
- front load washer and dryer raised on built in drawer base
- cabinets above washer and dryer pulled forward for accessibility
- walk in pantry has adequate floor space and reachable shelves
- kitchen has many pull out drawers for accessible storage
- flush transitions at all floor covering changes



Accessible pantry

Concept:

- “wings” of house radiate from core
- upper floors cantilever over main floor to represent varying energies
- multiple roof lines emphasize the different and dynamic energies

Program:

- exterior is of paintable materials so home owner can personalize
- house has a “presence” so homeowner can feel a sense of achievement
- overall plan is designed to be affordable to build and maintain



Accessible kitchen storage