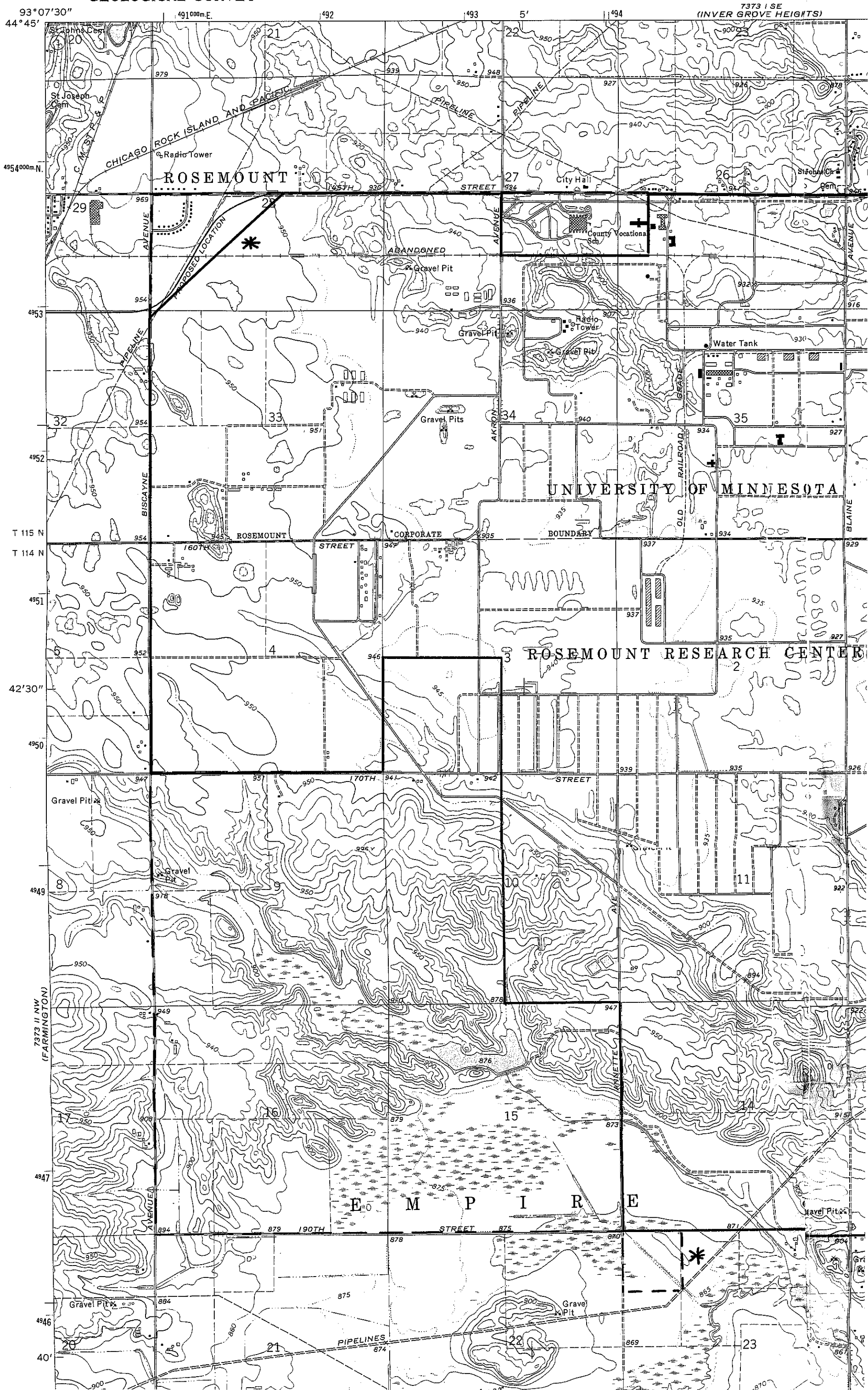


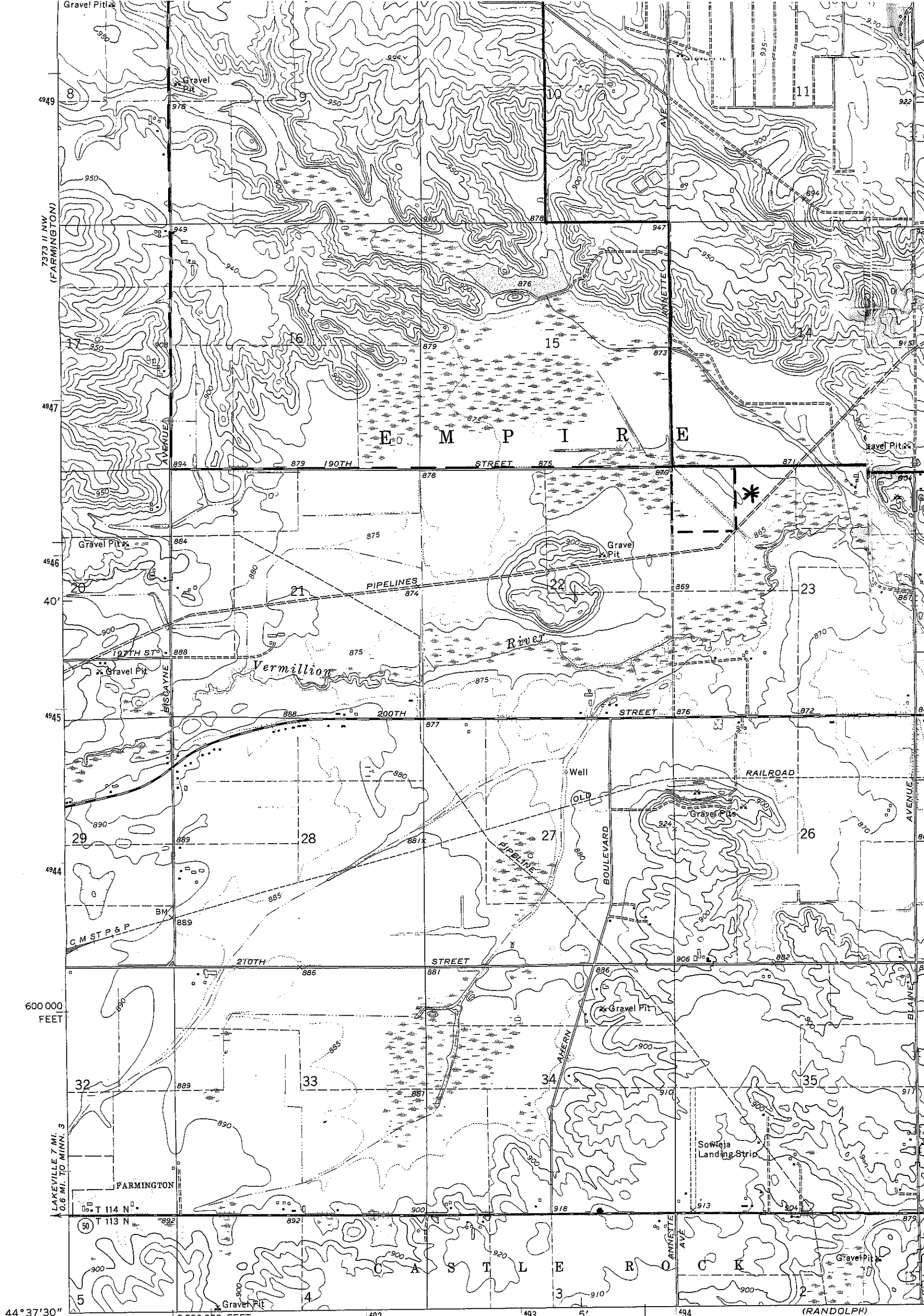
Attach. 1

7373 I SW
(ST. PAUL SW)

UNITED STATES
DEPARTMENT OF THE INTERIOR
GEOLOGICAL SURVEY

STATE OF MINNESOTA
DEPARTMENT OF ADMINISTRATION



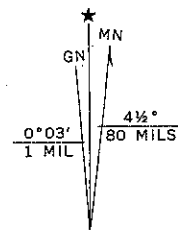


44° 37' 30" 93° 07' 30"

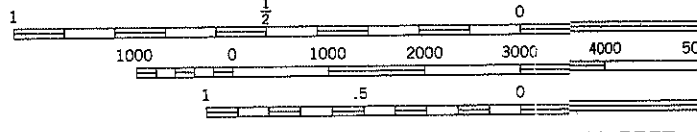
2 230 000 FEET 492 493 494

(RANDOLPH) 7373 II SE SCALE 1:24 000

Mapped, edited, and published by the Geological Survey
 Control by USGS, NOS/NOAA, and Minnesota Highway Department
 Topography by photogrammetric methods from aerial
 photographs taken 1973-74. Field checked 1974
 Projection and 10,000-foot grid ticks: Minnesota coordinate
 system, south zone (Lambert conformal conic)
 1000-metre Universal Transverse Mercator grid ticks,
 zone 15, shown in blue. 1927 North American datum
 Fine red dashed lines indicate selected fence and field lines
 where generally visible on aerial photographs
 This information is unchecked



UTM GRID AND 1974 MAGNETIC NORTH
 DECLINATION AT CENTER OF SHEET



CONTOUR INTERVAL - 10 FEET
 DOTTED LINES REPRESENT 1-FOOT CONTOUR
 NATIONAL GEODETIC VERTICAL DATUM OF 1983

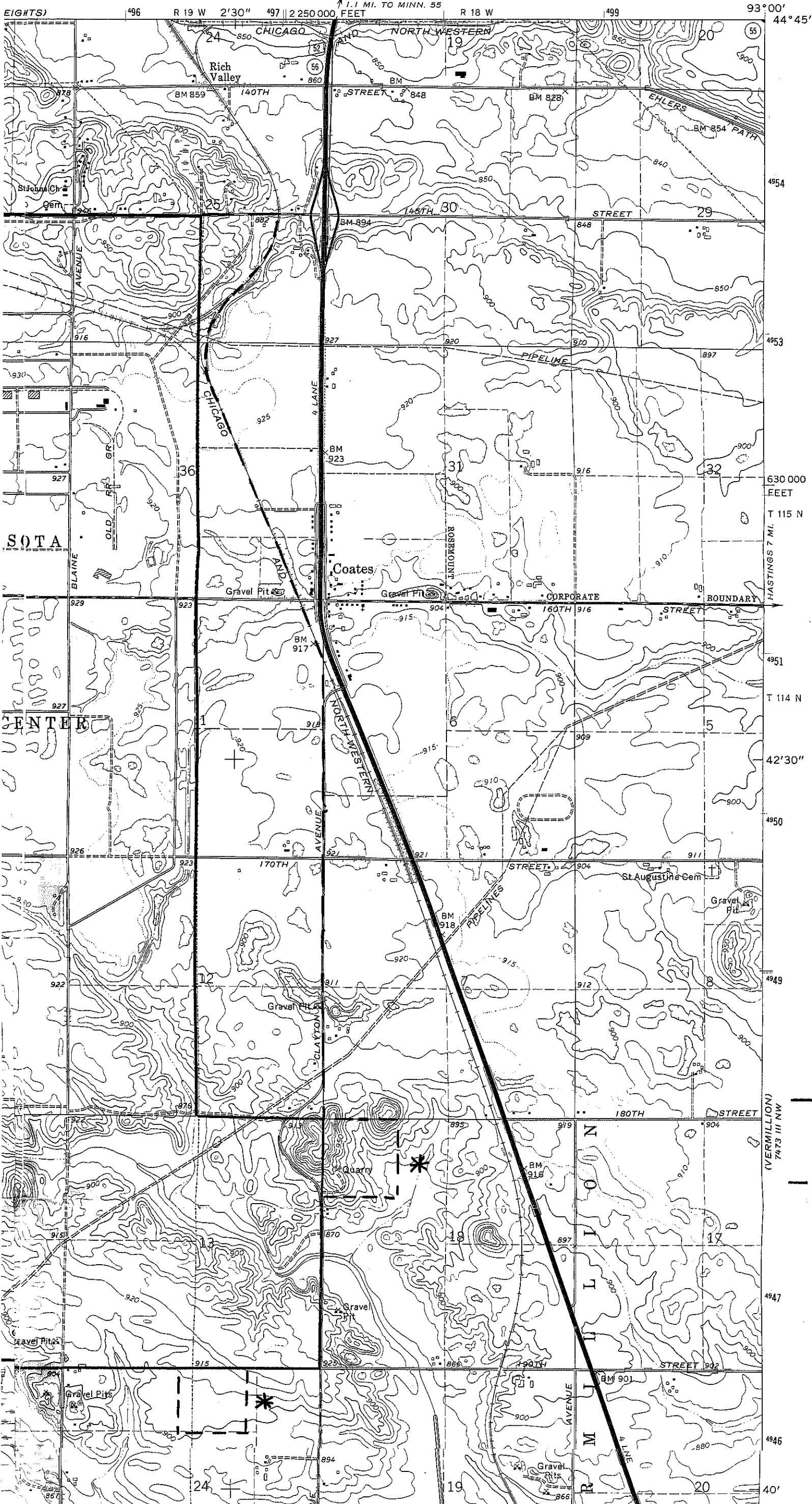
THIS MAP COMPLIES WITH NATIONAL MAP ACCURACY STANDARDS
 FOR SALE BY U. S. GEOLOGICAL SURVEY, RESTON, VA
 A FOLDER DESCRIBING TOPOGRAPHIC MAPS AND SYMBOLS IS AVAILABLE

(CASTLE ROCK)
 7373 II SW

COATES QUADRANGLE
 MINNESOTA-DAKOTA CO.
 7.5 MINUTE SERIES (TOPOGRAPHIC)
 NE/4 FARMINGTON 15' QUADRANGLE

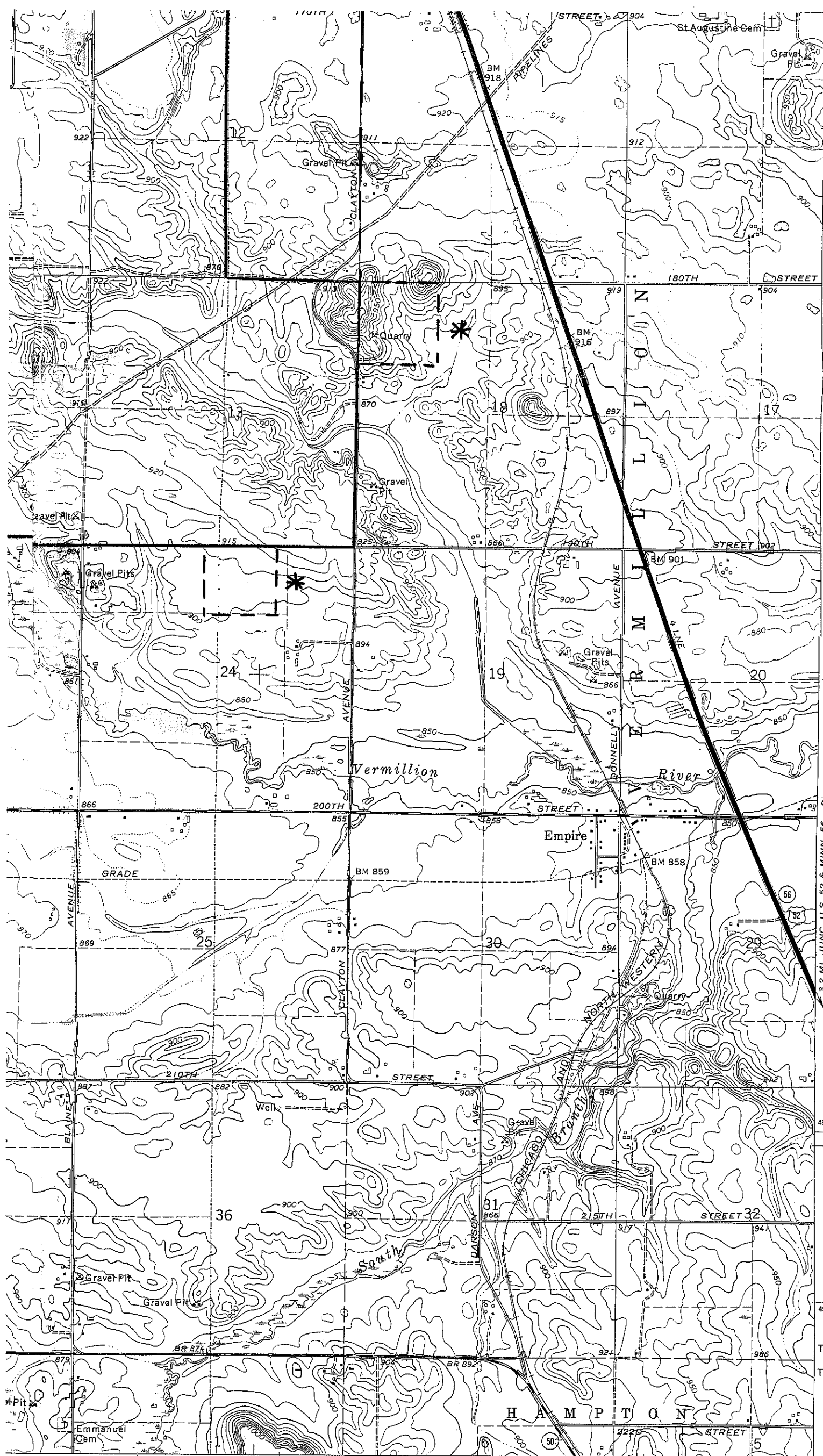
7473 IV SW
 (ST. PAUL PARK)

MINNESOTA
 ADMINISTRATION

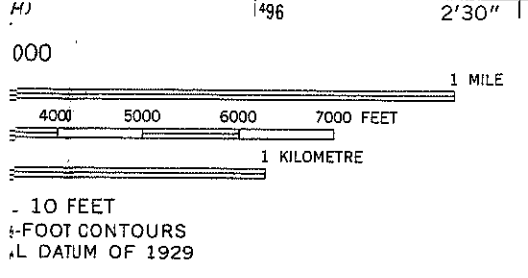


ATTACHMENT 1

- Present Boundary
- - - - Past Boundary (Gopher)
- * Approx. Boundary



——— Present Boundary
 - - - Past Boundary (Gopher)
 * Approx. Boundary



ROAD CLASSIFICATION
 Primary highway, hard surface ———
 Secondary highway, hard surface ———
 Light-duty road, hard or improved surface ———
 Unimproved road ———
 Interstate Route (circle with red border)
 U. S. Route (circle with blue border)
 State Route (circle with black border)

4942000m.N.
 T 114 N
 T 113 N
 44° 37' 30"
 93° 00'
 (CANNON FALLS) 7473 III SW

COATES, MINN.
 NE/4 FARMINGTON 15' QUADRANGLE
 N4437.5—W9300/7.5

1974
 AMS 7373 II NE—SERIES V872