



Women's Soccer | 9/1/2015 1:08:00 PM | Don Stopa

## Soccer Completes Preseason and on to Bemidji for NSIC Play



**CROOKSTON, Minn.-** The Golden Eagle soccer team wrapped up their 2015 preseason play this weekend and now they prepare to open up the regular season with a conference match at Bemidji State University on Thursday. In the midweek tilt, UMC will travel to Bemidji, Minn. where they look to avenge a 3-1 loss that opened up NSIC play in 2014.

Head coach [Joe Alianiello](#) enters his fourth campaign at the helm of the Golden Eagle soccer program and he looks to better the program's best ever finish, in 2014, where they went 6-6-6. "I thought we did some good things during preseason, said Alianiello. "We came in fitter than last year which is a big help. We have seen positive signs in each of our scrimmages; however there is much work to be done as we have also seen plenty of mistakes that need to be corrected. Once we get everyone on the same page, I think we will be a tough opponent to play on a consistent basis."

2014's top scorer, [Courtney Armbrorst](#) (Sr., West St. Paul, Minn./Biology) will be looked upon to lead the way on offense as she bested her squad with eight goals last year. The forward was the only player to score against the Beavers last season and she will look for some offensive help from fellow senior [Delaney McIntyre](#) (Flin Flon, Manitoba/Sport and Rec. Management) whose speed on the wing could add some offensive punch.

Junior goalkeeper, [Lexie Gauger](#) (Green Bay, Wis./Criminal Justice) started 17 of the Golden Eagles 18 games last year where she gave up less than one goal a game with a 0.95 goals against average. Gauger did give up a pair of goals in the BSU game last year but the full year of experience will help her stand tall in net in the Golden Eagle season opener.

Bemidji State is coming off a 2014 where they finished 9-9-1 and eighth place overall in the NSIC regular season. The Beavers also return their top scorer from last season as Sarah Stram (Jr., Elk Grove Village, Ill.) led the way with 12 goals and 6 assists. UMC will look to test a pair of young Bemidji goalkeepers as Catherine Arneson (So., Fort Collins, Colo.) returns with two starts under her belt while their other keeper, Anne Fobbe (Fr., St. Paul, Minn.) will be making her college debut.

"Bemidji is a tough opponent to play," noted Coach Alianiello. "They have one of the best front lines in our conference this year and it will be a tough task to get something out of the game. If we are disciplined and organized, we'll be in the game and hopefully can capitalize on the chances we generate."

Opening kick in Bemidji is scheduled for 7:00 p.m.

[Print Friendly Version](#)

PLAYERS MENTIONED ▾

**#9 Courtney Armbrorst**

F / 5' 8" / Senior

**#12 Delaney McIntyre**

MF/D / 5' 3" / Senior

**#0 Lexie Gauger**

GK / 5' 9" / Junior

**Related Stories**

03.21.23



Minnesota Crookston Soccer Adds California-Native Burnes to Signing Class

03.20.23



Minnesota Crookston Soccer Adds VanOverbeke to Signing Class

02.14.23



Minnesota Crookston Soccer Announces Morgan Philliber as Assistant Coach

02.09.23



Minnesota Crookston Soccer Announces Signing of Mantorville Midfielder Bebee

12.29.22



Minnesota Crookston Soccer Announces Three Signees

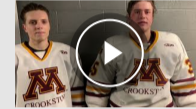
**Related Videos**

03.13.23



Post-Game vs. D'Youville and Illinois-Springfield

02.26.23



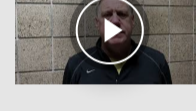
Post-Game Reaction vs. Michigan State: Jackson Fuller and Jared Aarnold

02.26.23



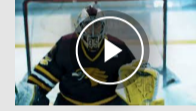
Post-Game Reaction vs. Michigan State - Steve Johnson

02.10.23



Mike Roysland Post-Game vs. MSU Moorhead

02.06.23



2022-23 Minnesota Crookston Hockey Hype Video



UNIVERSITY OF MINNESOTA CROOKSTON

© 2023 University of Minnesota Crookston Athletics

The University of Minnesota is an equal opportunity educator and employer