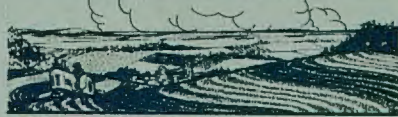


Our LAND



Appearing in newspapers of the Minnesota Editorial Association through the cooperation of the U.S. Soil Conservation service and conservation authorities at University Farm.

University Farm News
University of Minnesota
Institute of Agriculture
St. Paul 1 Minnesota

February 24 1955

Prepared and distributed
by the Minnesota Agricultural
Extension Service.

For use during week of
March 14 1955

Woodlot Management Cuts Costs -- Building maintenance and new construction are jobs most farmers face fairly often. Like Vernon Nielson, a Brown County farmer, many find the farm woodlot an economical source of material. Nielson harvested logs during slack periods, had them sawed into lumber at a portable mill and last spring built a new machine shed. Homegrown lumber cut his building costs to just a third of what they'd been if he'd bought finished material. This story comes to us from Marvin Smith, Extension forester at the University of Minnesota.

* * * * *

Rothsay Slough Project Ready Soon -- The Rothsay Slough Project soon will become a reality -- so report the Wilkin Soil Conservation District supervisors. The Rothsay Slough is a wildlife project which District farmers started planning soon after they organized. It is about 2,000 acres three miles northwest of Rothsay. Most of it is land not good for cultivation. The supervisors had strong backing of many area sportsmen's clubs and the help of the Minnesota Conservation Department in drawing plans. Part of the area will be game refuge, part public hunting grounds. Emil Frank, Minnesota Conservation Department, says 90 per cent of the land has now been bought or is under options, so it won't be long before the development is under way.

* * * * *

Son's a Comer -- Russell Taatjes, Clara City, reports that one of his son's fields of contour-grown soybeans outyielded Dad's by 10 bushels per acre. Taatjes Senior is a new supervisor in the Chippewa County Soil Conservation District.

* * * * *

"Ugh -- Gotum Soil Wrong Side Up" -- The early American Indian was no grammarian but he could express himself dramatically and clearly. An old Indian chief was watching a pioneer plow up some virgin prairie. The chief finally shook his head and said "Ugh -- no good! White man have land wrong side up." This story comes from Floyd Higgins, SCS farm planner, with the Carver County Conservation District.