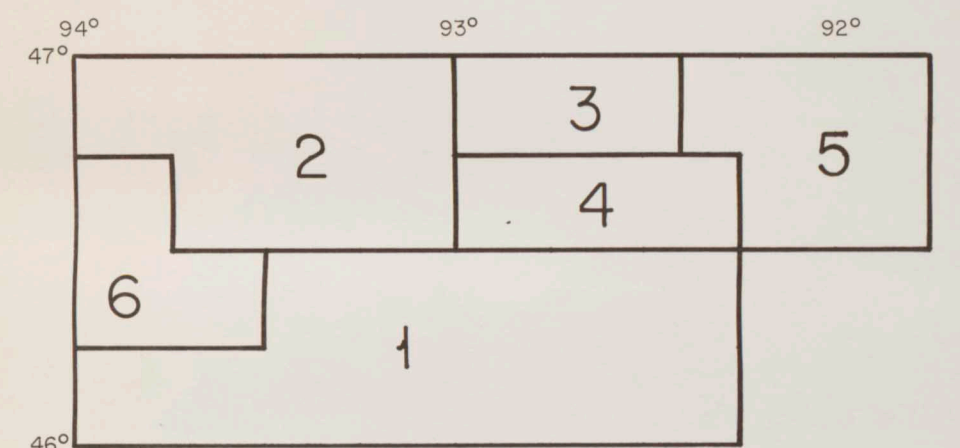


EXPLANATION

— 40 —  
Gravity contours  
dashed where approximate  
Contour interval at 1 milligal.  
Assumed density is 2.67 grams  
per cubic centimeter

○ 30 ○  
Gravity contours enclosing  
area of low gravity

•  
Gravity station  
(Stations not shown in area 1)

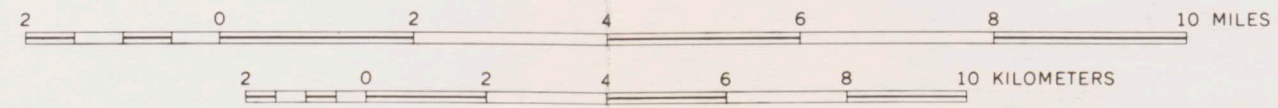


INDEX TO MAPPING

1. McGinnis, L. D., Carlson, D. R. and Hepperly, J. T.
2. McGinnis, L. D., Pottorf, B. R. and Clark, C. C.
3. Hess, G. R. and Molitor, G. W.
4. Ikola, R. J., 1967. A geophysical investigation of the geologic structure of Carlton County, Minnesota: Unpub. MS thesis, Univ. of Minn., Minneapolis.
5. Ikola, R. J., 1968. Simple Bouguer gravity map of southern part of Duluth Complex and adjacent areas, Minnesota: Minn. Geol. Survey Misc. Map M-4.
6. Durfee, G. A., 1957. A regional gravity survey of the Cuyuna iron range, Minnesota: U.S. Geol. Survey, Open File Series 415.

Base from U.S. Geological Survey  
Duluth, 1953-63 and Ashland, 1953-63

SCALE 1:125 000



# SIMPLE BOUGUER GRAVITY MAP OF MINNESOTA DULUTH SHEET

By  
Kelly A. Krenz and C. Patrick Ervin  
1977