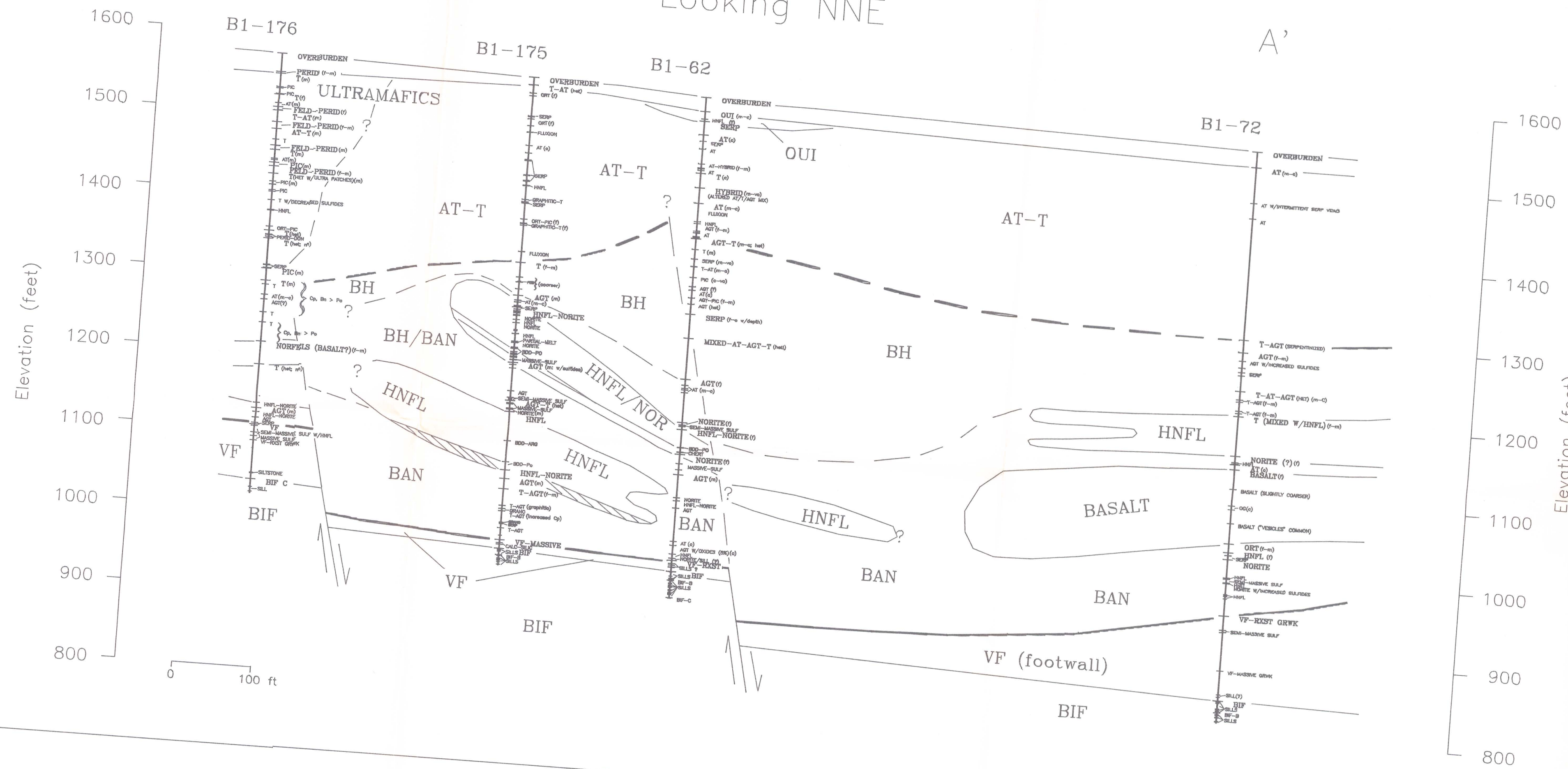
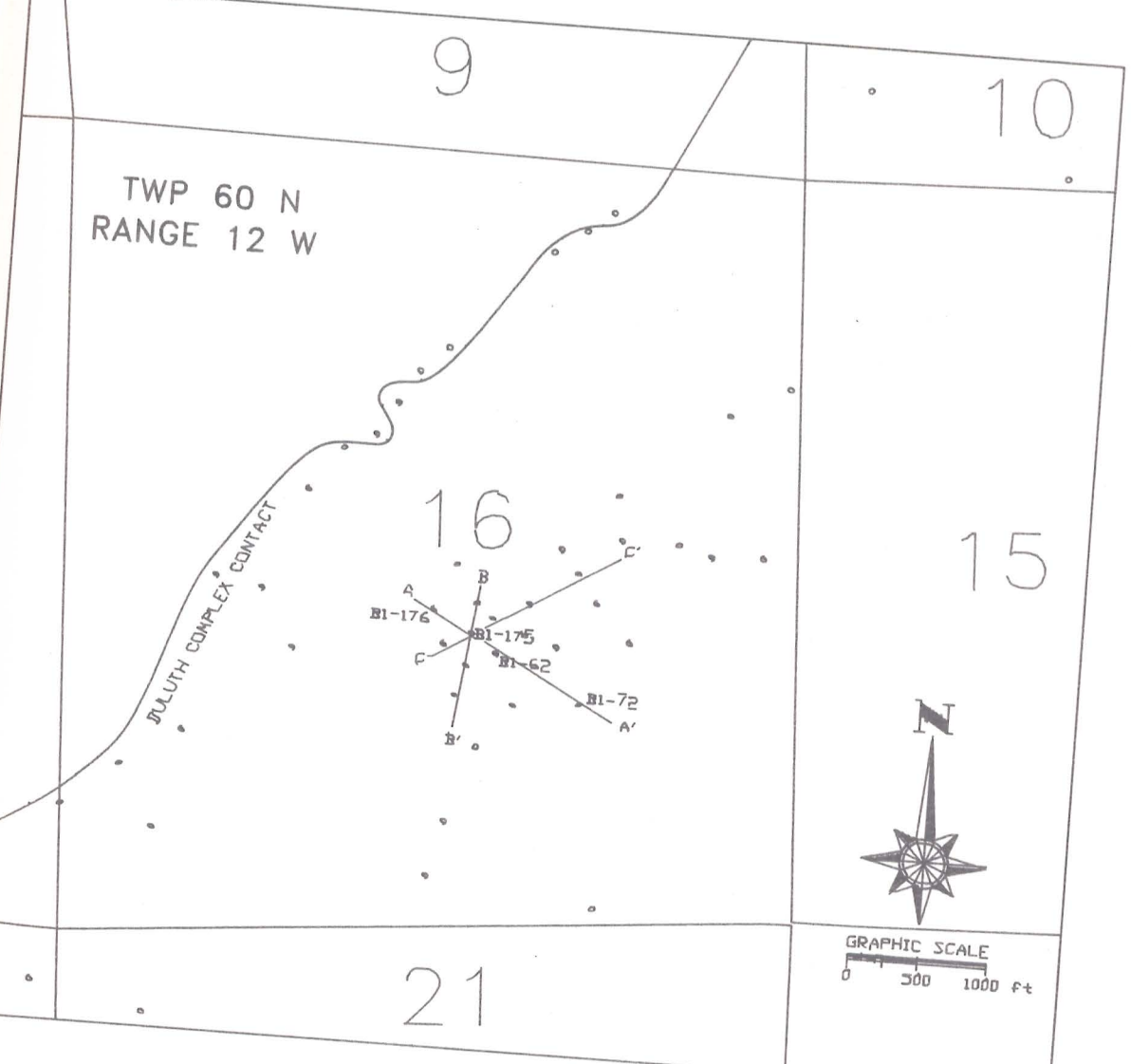


# SERPENTINE DEPOSIT (Cross-section A-A')

Looking NNE



- TEXT LEGEND**  
UNIT DESIGNATION & DESCRIPTION
- AGT augite-tractolite
  - AGT-OG augite-tractolite-olivine gabbro (variable)
  - AGT-PIC augite-tractolite-picrite (variable)
  - ANORITE augite-tractolite-tractolite (variable)
  - AT augite-norite
  - AT-HYBRID anorthositic tractolite
  - AT-PIC anorthositic tractolite w/ picrite
  - AT-T anorthositic tractolite-tractolite (variable)
  - BAN basal augite-norite
  - BASALT basal
  - BASALT-AGT mixed basalt-augite-tractolite
  - BASALT-HNFL mixed basalt-hornfels
  - BDD-ARG bedded argillite
  - BDD-PO bedded pyrrhotite
  - BH basal heterogeneous
  - BIF basal Banded Iron-Formation
  - BIF-A Banded Iron-Formation - submember A
  - BIF-B Banded Iron-Formation - submember B
  - BIF-C Banded Iron-Formation - submember C
  - BIF-D Banded Iron-Formation - submember D
  - CALC-SILIC calc silicate
  - CHERT chert
  - FELD-PERID feldspathic peridotite
  - FLUXION s.l.s.a. primary igneous foliation
  - GRAND granophyre
  - GRAPHITIC graphite-bearing
  - GRWK graywacke; associated with Virginia Formation
  - HNFL hornfels
  - HNFL-MASS-SULF hornfels mixed w/ massive sulfides
  - HNFL-NORITE hornfels-norite
  - HYBRID hybrid rock type (not specific)
  - MASS-SULF massive sulfides
  - MELA-GAB melagabbro
  - MIXED-AT-AGT-T mixed anorthositic tractolite-augite-tractolite and tractolite
  - NOR norite
  - NORFELS recrystallized basalt?
  - NOR-MELA-GAB noritic melagabbro
  - OG olivine gabbro
  - ORT olivine rich tractolite
  - ORT-PIC olivine rich tractolite and picrite
  - OUI oxide ultramafic intrusive
  - OVERBURDEN overburden/glacial material
  - PEG pegmatite
  - PERID peridotite
  - PERID-DUN peridotite-dunite (variable)
  - PIC-ORT picrite (or melagabbro)
  - PIC-OUI mixed picrite-olivine rich tractolite
  - QUARTZITE quartzite
  - SEMI-MASS semi-massive sulfides
  - SERP serpentinization
  - SERP-FELD-PERID serpentinized feldspathic peridotite
  - SERP-PIC serpentinized picrite
  - SIL siltstone
  - SILTSTONE siltstone
  - SLICKED slickensided
  - T taconite
  - TA taconite
  - T-AGT tractolite-anorthositic
  - T-AT tractolite-augite-tractolite (variable)
  - T-HNFL tractolite-anorthositic tractolite (variable)
  - T-PIC-OUI mixed tractolite and hornfels
  - ULTRAMAFIC ultramafic
  - VF Virginia Formation
  - VF-MASSIVE Virginia Formation-massive
  - VF-RST Virginia Formation-recrystallized
- TEXTURE AND COMPOSITION KEY**
- f fine grained
  - m medium grained
  - c coarse grained
  - vc very coarse grained
  - peg pegmatitic
  - homog homogeneous
  - het heterogeneous
- MINERAL ABBREVIATIONS**
- Cp Chalcopyrite
  - Bn Bornite
  - Py Pyrrhotite



CROSS SECTION LOCATION MAP

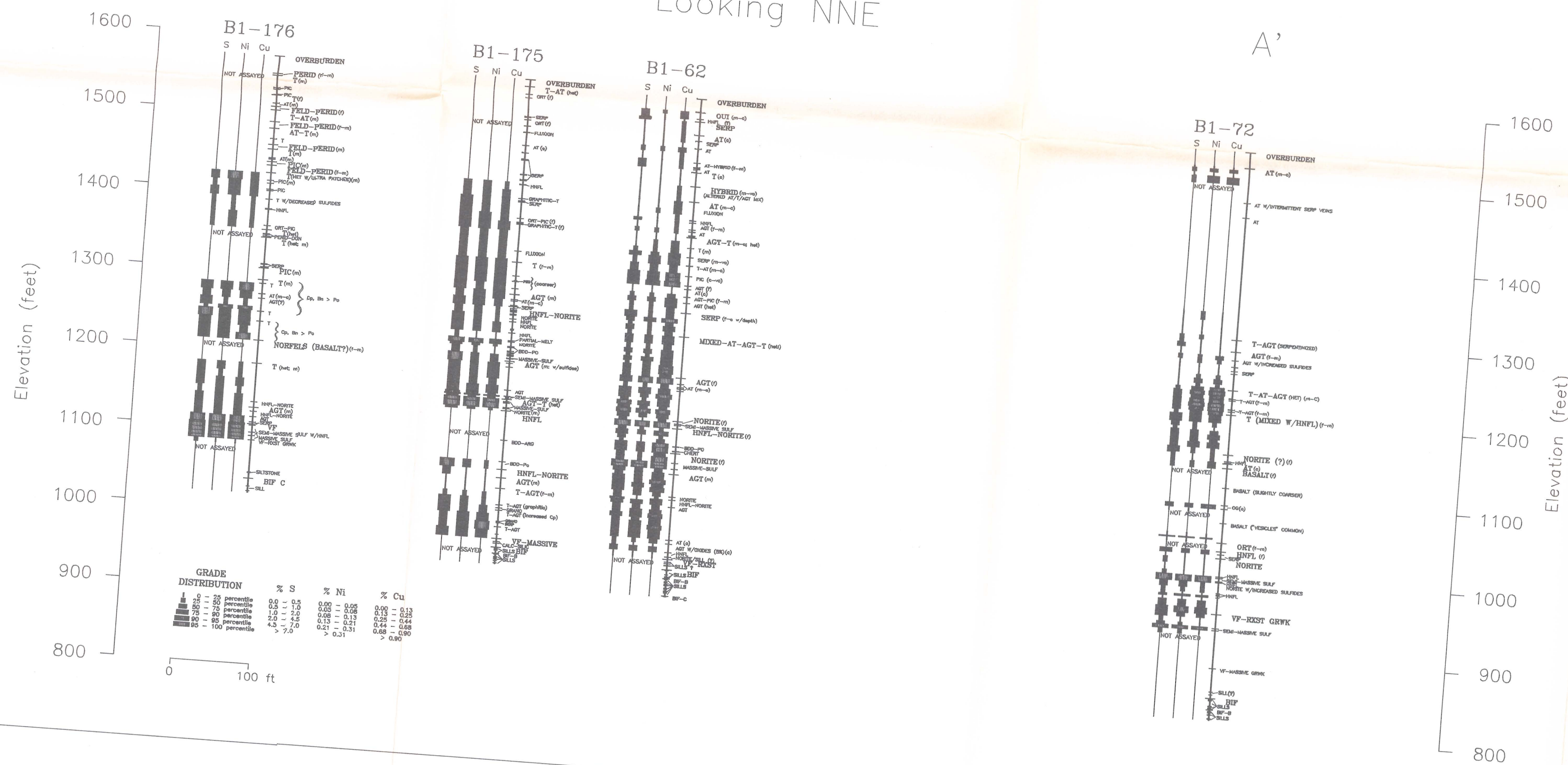
## PLATE 1A GROSS GEOLOGY (Cross-section A-A')

Data compilation and interpretation by L. Zanko and M. Severson  
NRRI Minerals Division: 1992 - 1994

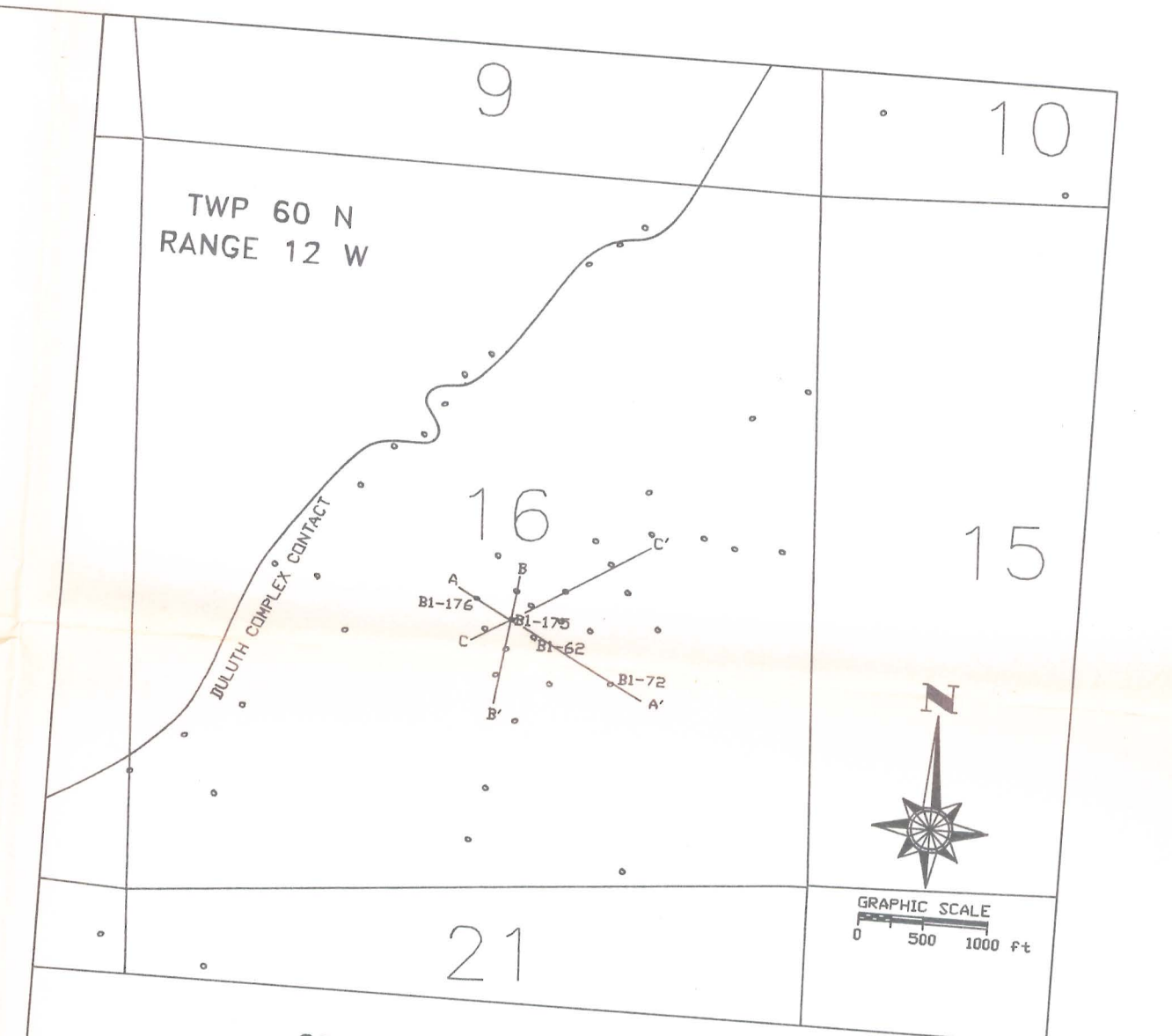


# SERPENTINE DEPOSIT (Cross-section A-A')

Looking NNE



- TEXT LEGEND**  
UNIT DESIGNATION & DESCRIPTION
- AGT augite-tractolite
  - AGT-OG augite-tractolite-olivine gabbro (variable)
  - AGT-PIC augite-tractolite-picrite (variable)
  - ANORITE augite-tractolite-tractolite (variable)
  - AT augite-norite
  - AT-HYBRID anorthositic tractolite
  - AT-PIC anorthositic tractolite w/ picrite
  - AT-T anorthositic tractolite-tractolite (variable)
  - BAN basal augite-norite
  - BASALT basal
  - BASALT-AGT mixed basalt-augite-tractolite
  - BASALT-HNFL mixed basalt-hornfels
  - BDD-ARG bedded argillite
  - BDD-PO bedded pyrrhotite
  - BH basal heterogeneous
  - BIF basal Banded Iron-Formation
  - BIF-A Banded Iron-Formation - submember A
  - BIF-B Banded Iron-Formation - submember B
  - BIF-C Banded Iron-Formation - submember C
  - BIF-D Banded Iron-Formation - submember D
  - CALC-SILIC calc silicate
  - CHERT chert
  - FELD-PERID feldspathic peridotite
  - FLUXION s.l.s.a. primary igneous foliation
  - GRAND granophyre
  - GRAPHITIC graphite-bearing
  - GRWK graywacke; associated with Virginia Formation
  - HNFL hornfels
  - HNFL-MASS-SULF hornfels mixed w/ massive sulfides
  - HNFL-NORITE hornfels-norite
  - HYBRID hybrid rock type (not specific)
  - MASS-SULF massive sulfides
  - MELA-GAB melagabbro
  - MIXED-AT-AGT-T mixed anorthositic tractolite-augite-tractolite and tractolite
  - NOR norite
  - NORFELS recrystallized basalt?
  - NOR-MELA-GAB noritic melagabbro
  - OG olivine gabbro
  - ORT olivine rich tractolite
  - ORT-PIC olivine rich tractolite and picrite
  - OUI oxide ultramafic intrusive
  - OVERBURDEN overburden/glacial material
  - PEG pegmatite
  - PERID peridotite
  - PERID-DUN peridotite-dunite (variable)
  - PIC-ORT picrite (or melagabbro)
  - PIC-OUI mixed picrite-olivine rich tractolite
  - QUARTZITE quartzite
  - SEMI-MASS semi-massive sulfides
  - SERP serpentinization
  - SERP-FELD-PERID serpentinized feldspathic peridotite
  - SERP-PIC serpentinized picrite
  - SIL siltstone
  - SILTSTONE siltstone
  - SLICKED slickensided
  - T taconite
  - TA taconite
  - T-AGT tractolite-anorthositic
  - T-AT tractolite-augite-tractolite (variable)
  - T-HNFL tractolite-anorthositic tractolite (variable)
  - T-PIC-OUI mixed tractolite and hornfels
  - ULTRAMAFIC ultramafic
  - VF Virginia Formation
  - VF-MASSIVE Virginia Formation-massive
  - VF-RST Virginia Formation-recrystallized
- TEXTURE AND COMPOSITION KEY**
- f fine grained
  - m medium grained
  - c coarse grained
  - vc very coarse grained
  - peg pegmatitic
  - homog homogeneous
  - het heterogeneous
- MINERAL ABBREVIATIONS**
- Cp Chalcopyrite
  - Bn Bornite
  - Py Pyrrhotite



CROSS SECTION LOCATION MAP

## PLATE 1B S-Ni-Cu DISTRIBUTION (Cross-section A-A')

Data compilation and interpretation by L. Zanko and M. Severson  
NRRI Minerals Division: 1992 - 1994

