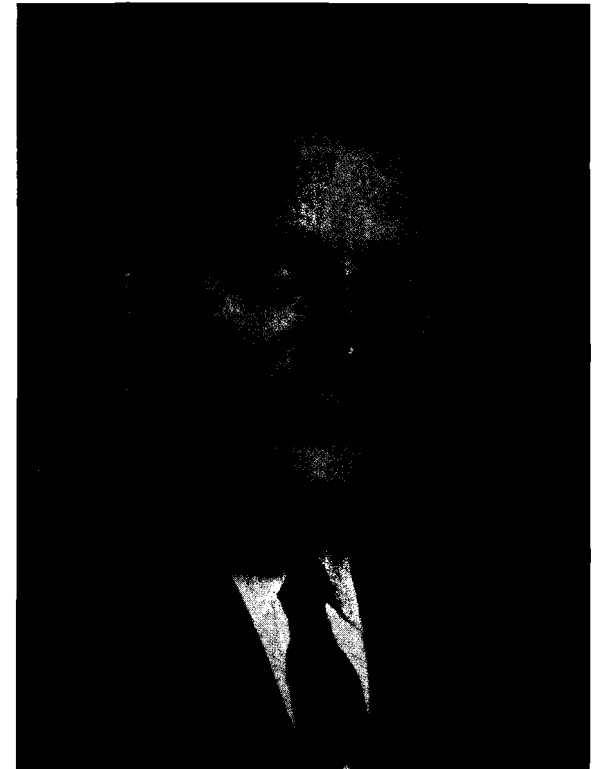


O. MEREDITH WILSON LIBRARY / UNIVERSITY OF MINNESOTA

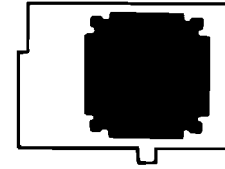
O. MEREDITH WILSON LIBRARY



The new library building of the University of Minnesota, Minneapolis, opened for service on September 23, 1968. It is a seven-story structure, with four floors and a roofhouse level above ground, and two larger floors below ground. The library has a capacity of 1,500,000 volumes and 2,200 reader stations, including 138 faculty and 60 graduate studies.

The library bears the name of Dr. O. Meredith Wilson, President of the University of Minnesota, 1960-1967, whose continued personal support was instrumental in obtaining the funds for the new building. To Dr. Wilson and the members of his staff, the Board of Regents, the Legislature, the U.S. Office of Education, and all others who contributed to making this facility a reality, the University is deeply grateful.

INTRODUCTION



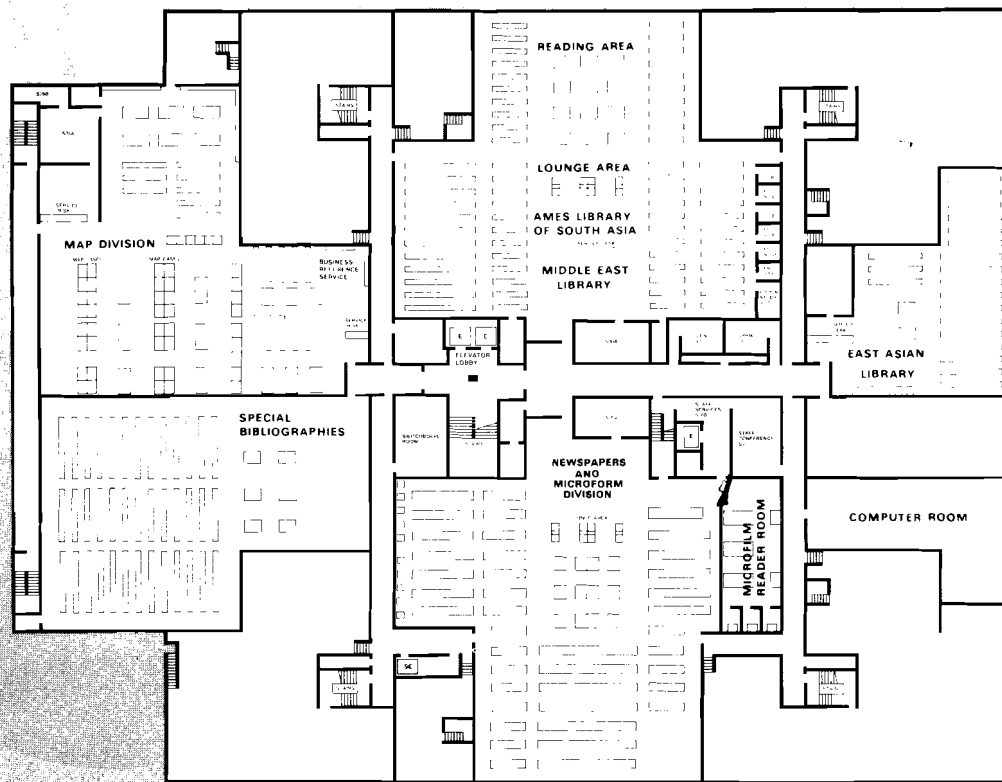
By the late 1950's the need for library expansion at the University of Minnesota had become critical, and planning a major new library facility developed as the University projected how best to serve an enrollment of approximately 49,000 students by 1970. In 1958 the decision was made to relocate the Humanities and Social Sciences departments, the School of Business Administration, and certain other academic units on the West Bank of the Mississippi River. Since the library holdings in these fields constitute a large percentage of its total collections, recommendations were formulated to design the proposed West Bank library facility to house the Social Science and the Humanities collections, and also to serve as a new "main library" for the University library system. The new building is located at the heart of the West Bank development.

There are two main entrances to the new library: one of them is at grade level, entering from a Plaza area, and the other is at the Basement level, with access through a wide underground concourse that connects the library with all other buildings on the West Bank.

The Wilson Library provides "open stack" access to all material except for special collections and rare books, which are housed in a secure closed stack area with adjoining reading room space for supervised use of these materials.

The interior design of the building has successfully combined aesthetic attractiveness with function. The central reading spaces on each floor are flanked by stack areas where books are arranged on open shelves. A wide variety of reading areas permit patrons to select the type of study facility at which they wish to work. They may have the privacy of an individual carrel, or they may choose a large table to spread out their work, or they may prefer a lounge chair for relaxation.

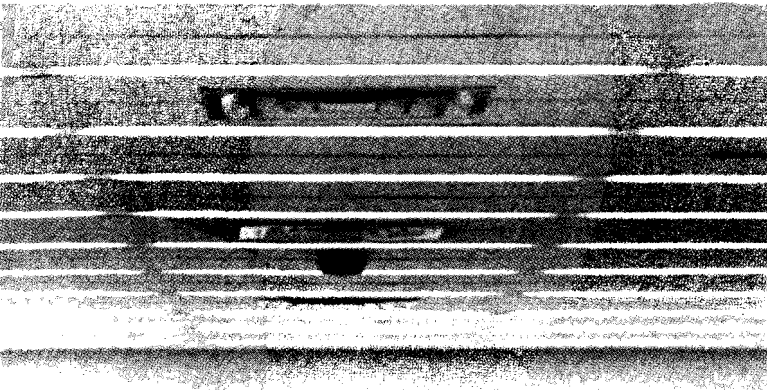
SUB BASEMENT LEVEL



On the library's lowest level are the Newspaper and Microform Division, Map Division, Business Reference Service, Ames Library of South Asia, Middle East Library, and the East Asian Library. Space on this level has also been provided for computer and other automation equipment.

The Newspaper and Microform Division has a separate room with special lighting to accommodate the users of the microform readers.

The Ames Library of South Asia and the Middle East Library are housed within the same room with each having separate stack areas but sharing other facilities.



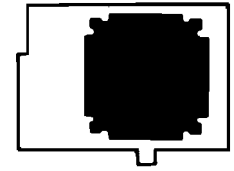
a.



b.



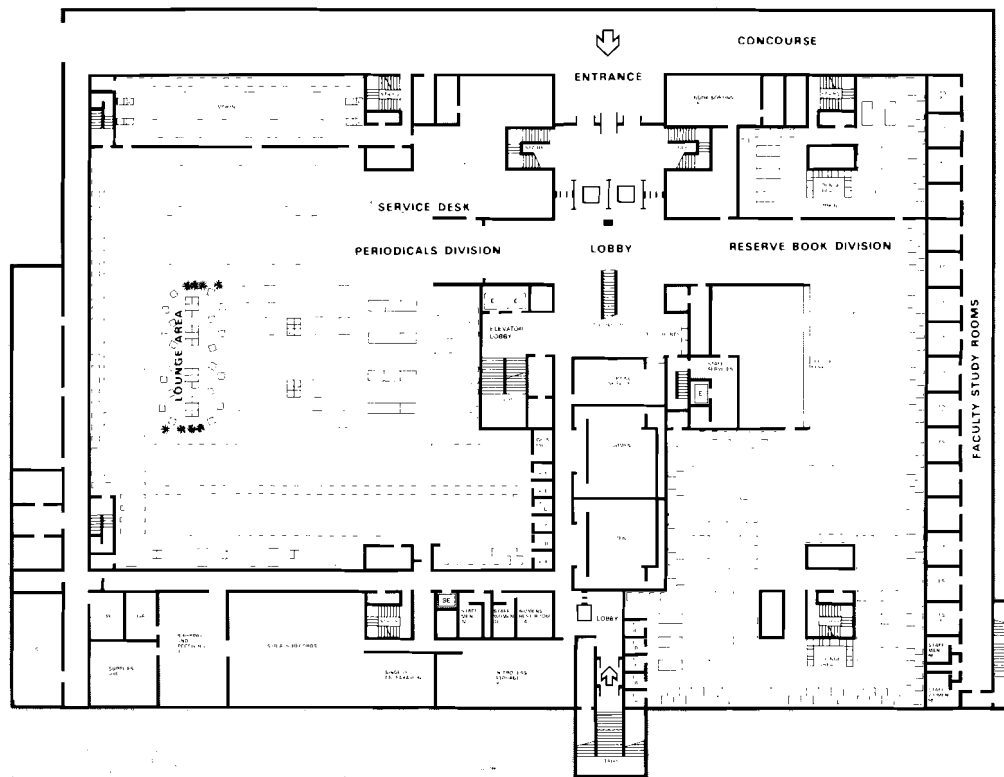
- a. Ames Library of South Asia and Middle East Library
- b. Microfilm readers
- c. Modern office and map division area



c.



BASEMENT



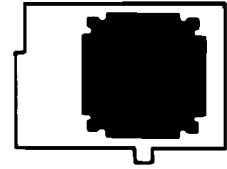
The Basement level is the most heavily used area of the library. It houses the Reserve Book Division and the Periodicals Division. Since most of the materials in these units are used on the scene, this floor has been provided with extensive seating capacity. More than 800 study stations are available in these two divisions. The building design allows closing off all other levels so that this large service floor may be kept open for extended hours of use without keeping the entire library building open.

Also in the Basement are the Copying Service, Shipping and Receiving Room, Serials Records Section, and Bindery Preparations.

The mass seating areas on this level are accessible through an entrance from a 25-foot wide concourse connecting the library with nearby office and classroom buildings.

A one-way escalator moves patrons entering from this concourse up to the First Floor, which is the bibliographic center of the library.

a.



- a. Skylighted lounge area in periodicals division
- b. Periodicals division reading area
- c. Fast, efficient service in reserve room
- d. Reserve room general seating area

b.



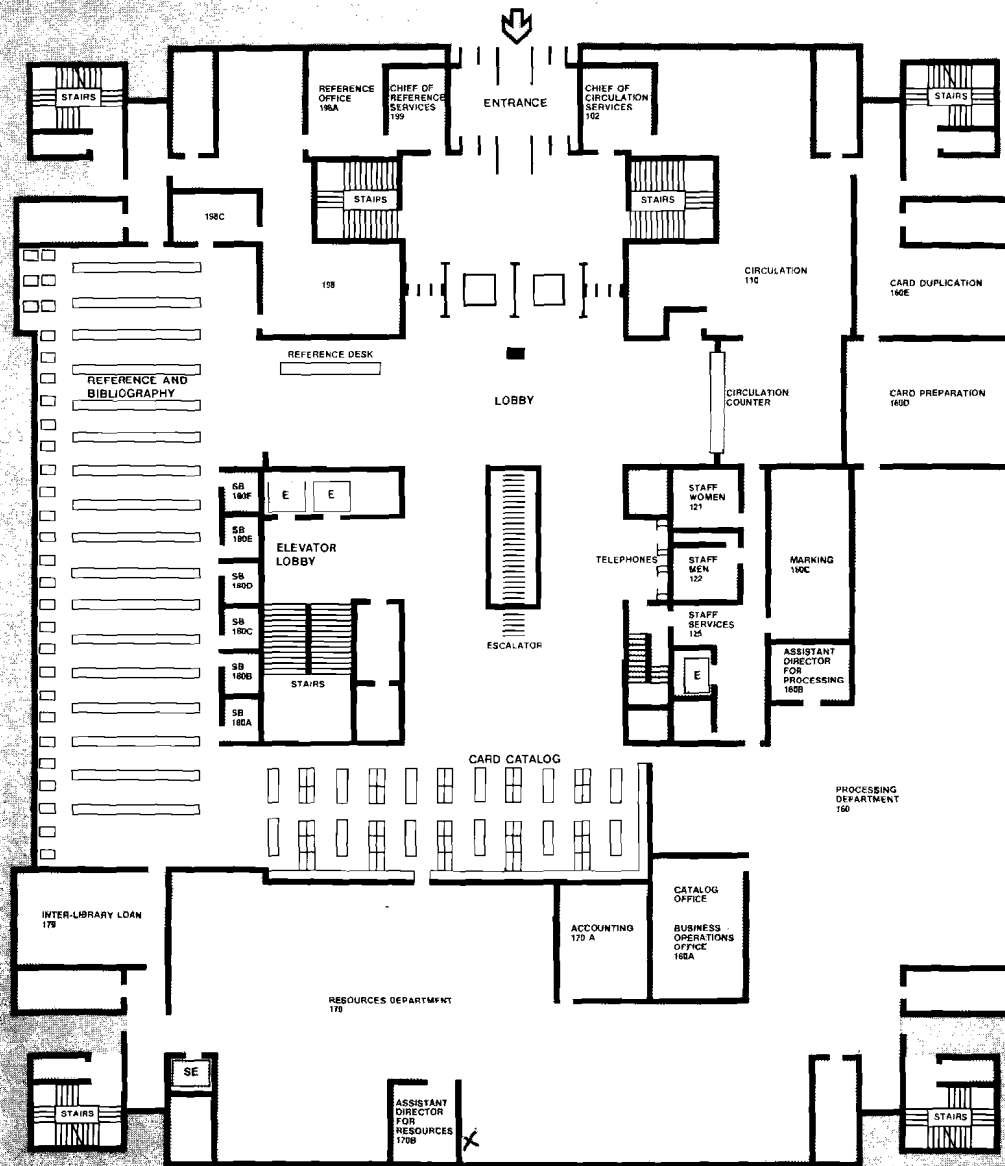
c.



d.



PLAZA LEVEL



The main entrance of the library is on the Plaza (First Floor) level. This level houses the public card catalog, the technical services departments, a Reference and Bibliography area, Interlibrary Loan Service, the main Circulation Desk, and a General Information Desk. The accessibility of these central service points facilitates the effective use of the entire library.

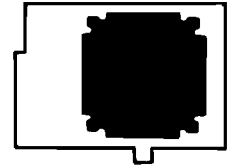
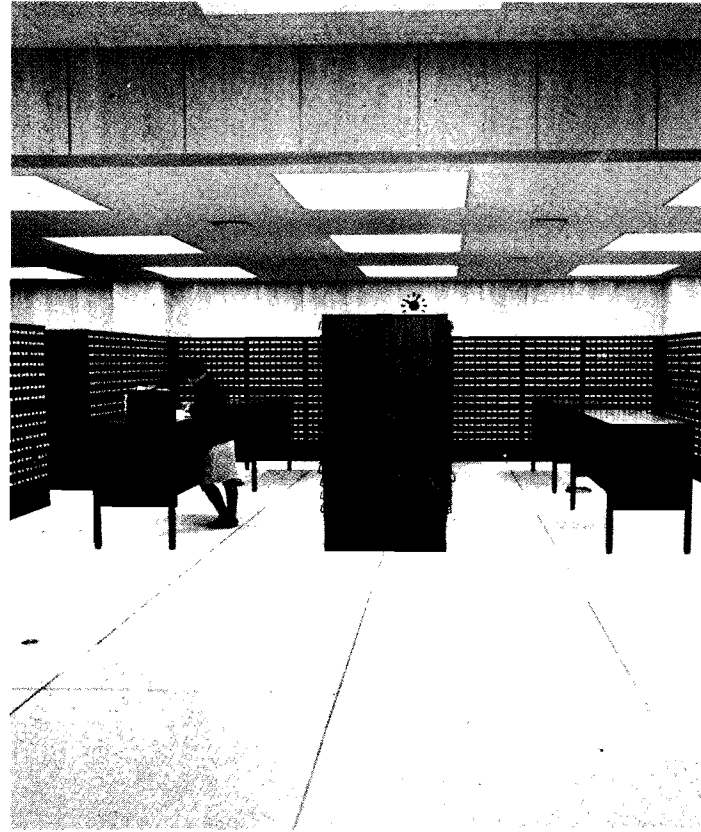
The arrangement of the technical service units provides smooth "assembly line" flow of library acquisitions from Resources to Processing to Circulation. Also the location of these departments gives them easy access to the official card catalog.

The library is designed as a self-service facility, so paging of books for patrons is done only in cases of special need. A book lift and pneumatic tube system is available, connecting all floors of the library.

a.



b.



- a. Catalog work stations in processing department
- b. Main card catalog section
- c. Office in resources department
- d. Lobby, reference and bibliography area
- e. Hardwood book stacks in carpeted reference and bibliography area

c.



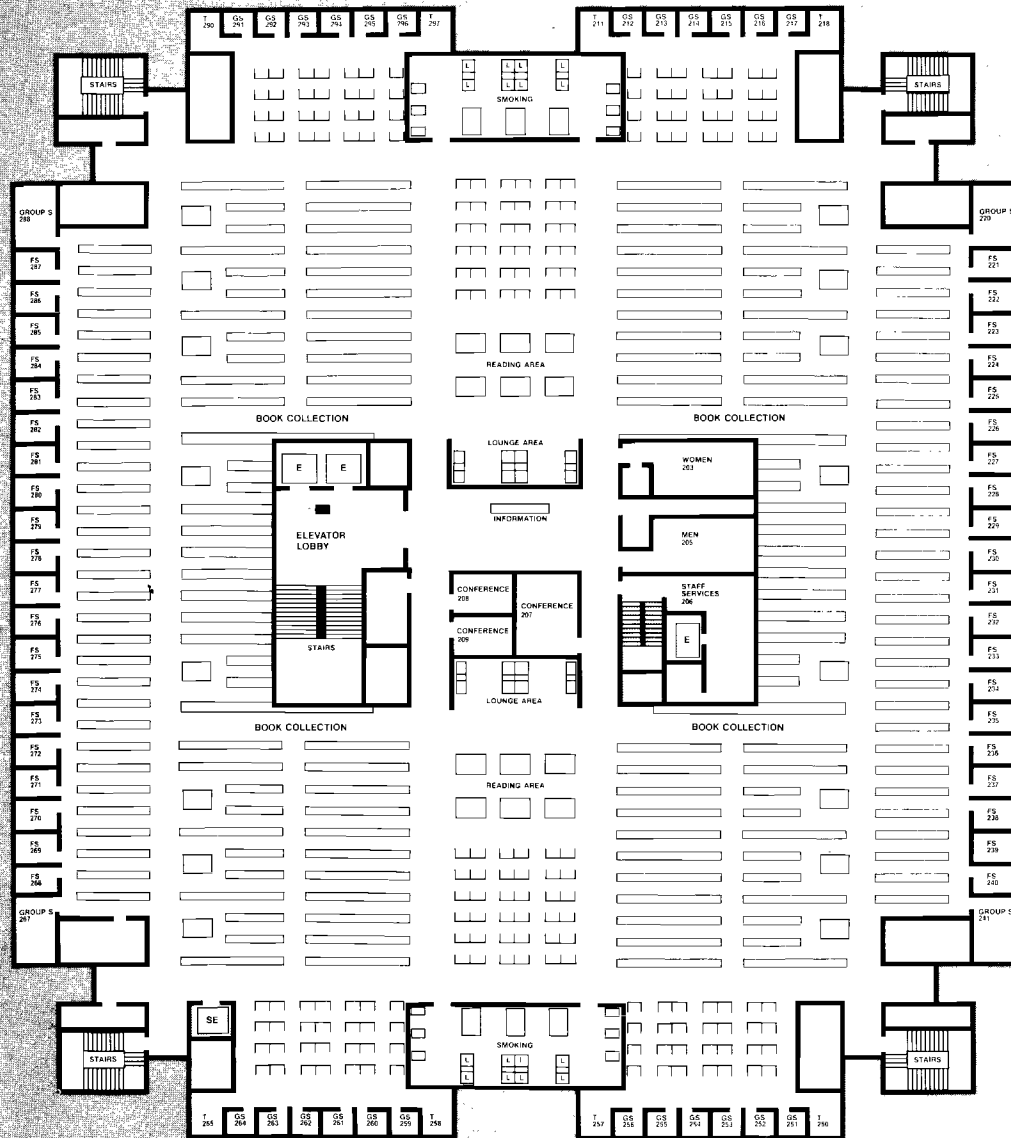
d.



e.



LEVEL TWO



Levels two and three are identical in design. Here are housed the general book collections of the library, and the reading areas for their use. Each floor has 24 graduate carrels, 8 typing rooms, 40 faculty studies, 3 conference rooms for group discussion or audition of spoken word recordings piped in from the Listening Room on the Fourth Floor. Each floor also has two large reading rooms where smoking is permitted, offering a variety of seating plus views of the campus through large "picture windows."

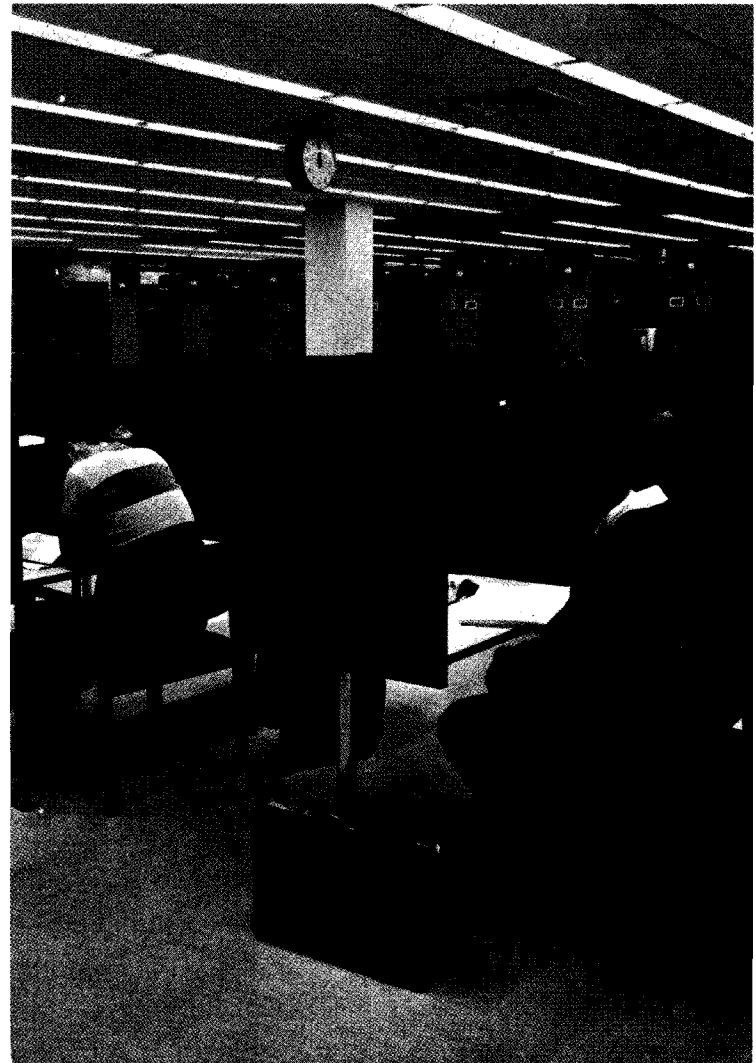
Each of these floors has 500 study stations with 65-70% of these being individual tables or carrels. Several of the tables are interspersed throughout the stacks for the convenience of patrons.



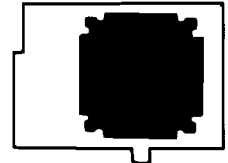
a.



b.

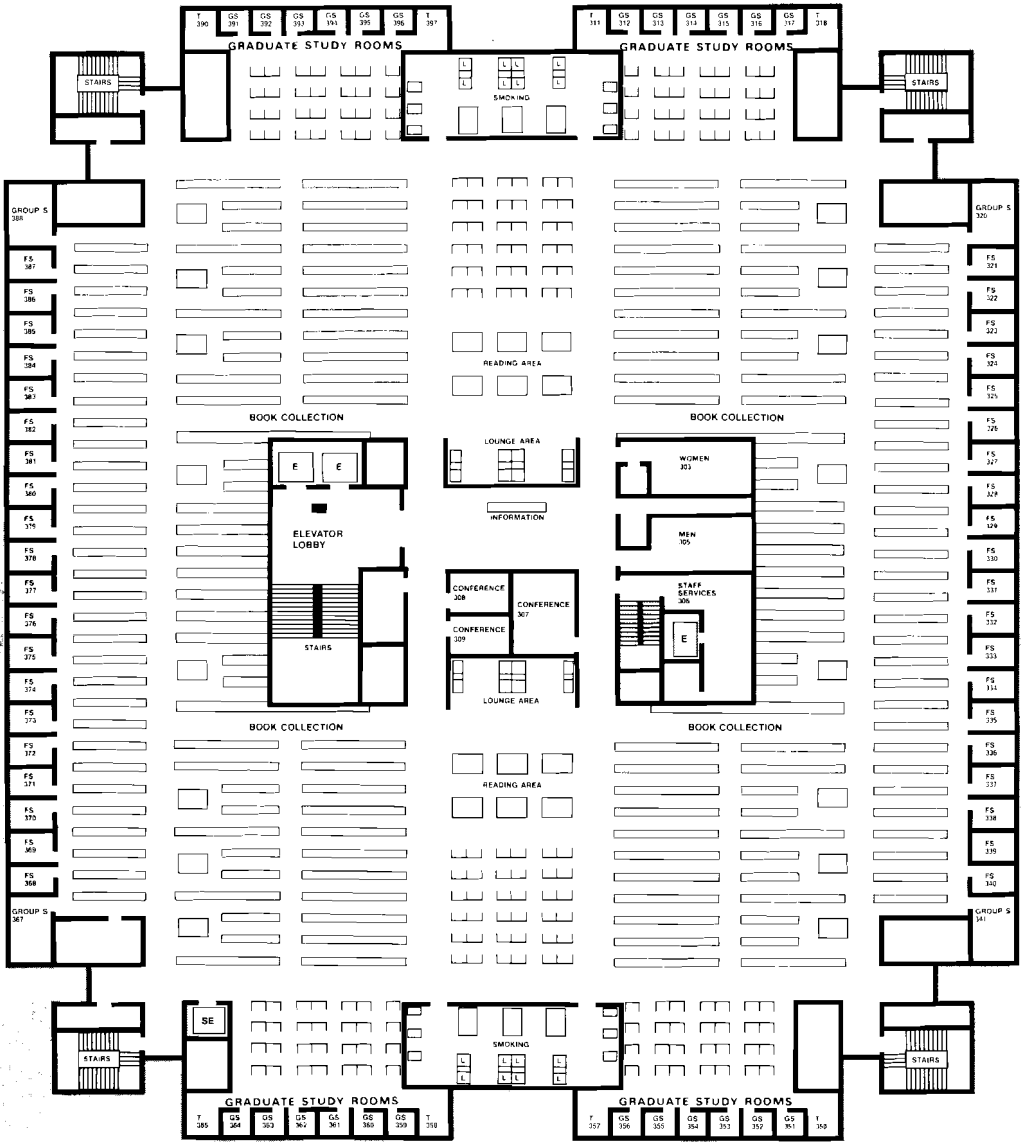


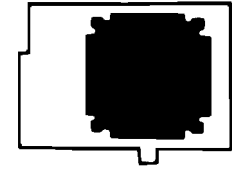
c.



- a. Stack ranges housing the general book collections
- b. General reading area
- c. Study carrels in reading area

LEVEL THREE





- a. Reading and study area
- b. Smoking room
- c. Lounge area
- d. Conference room

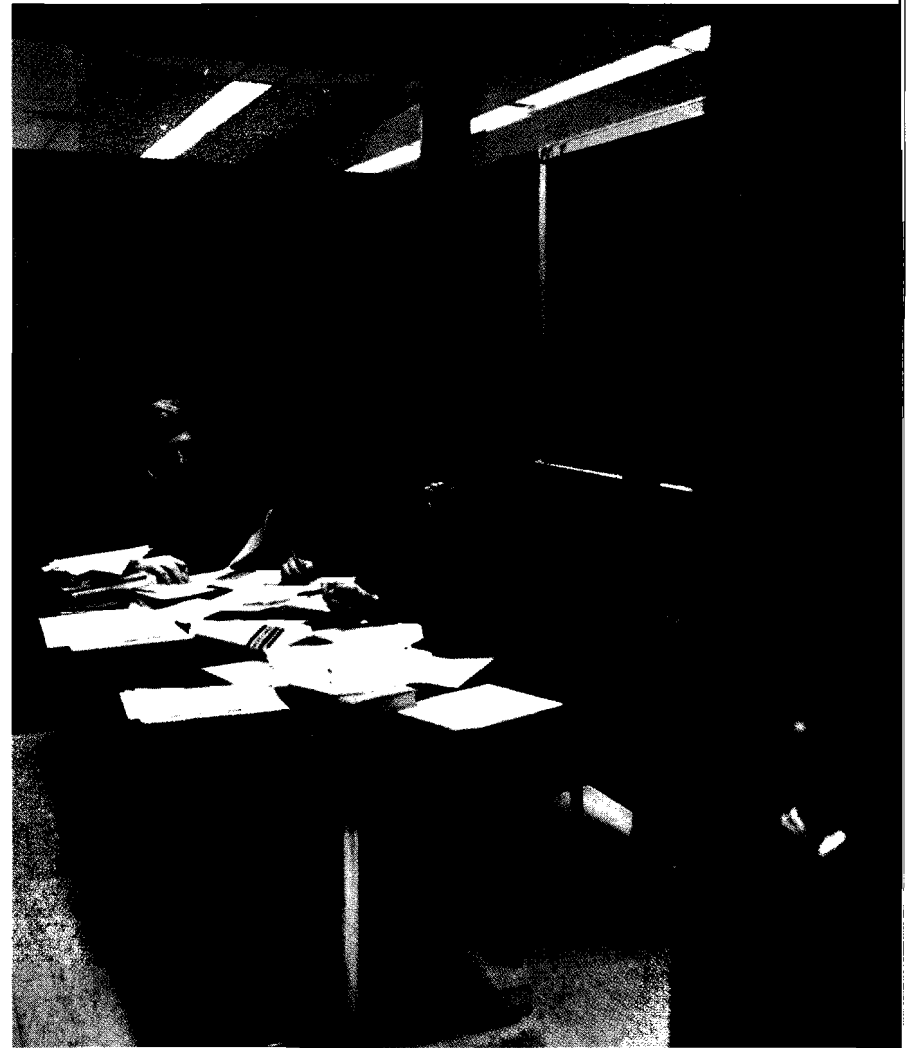
a.



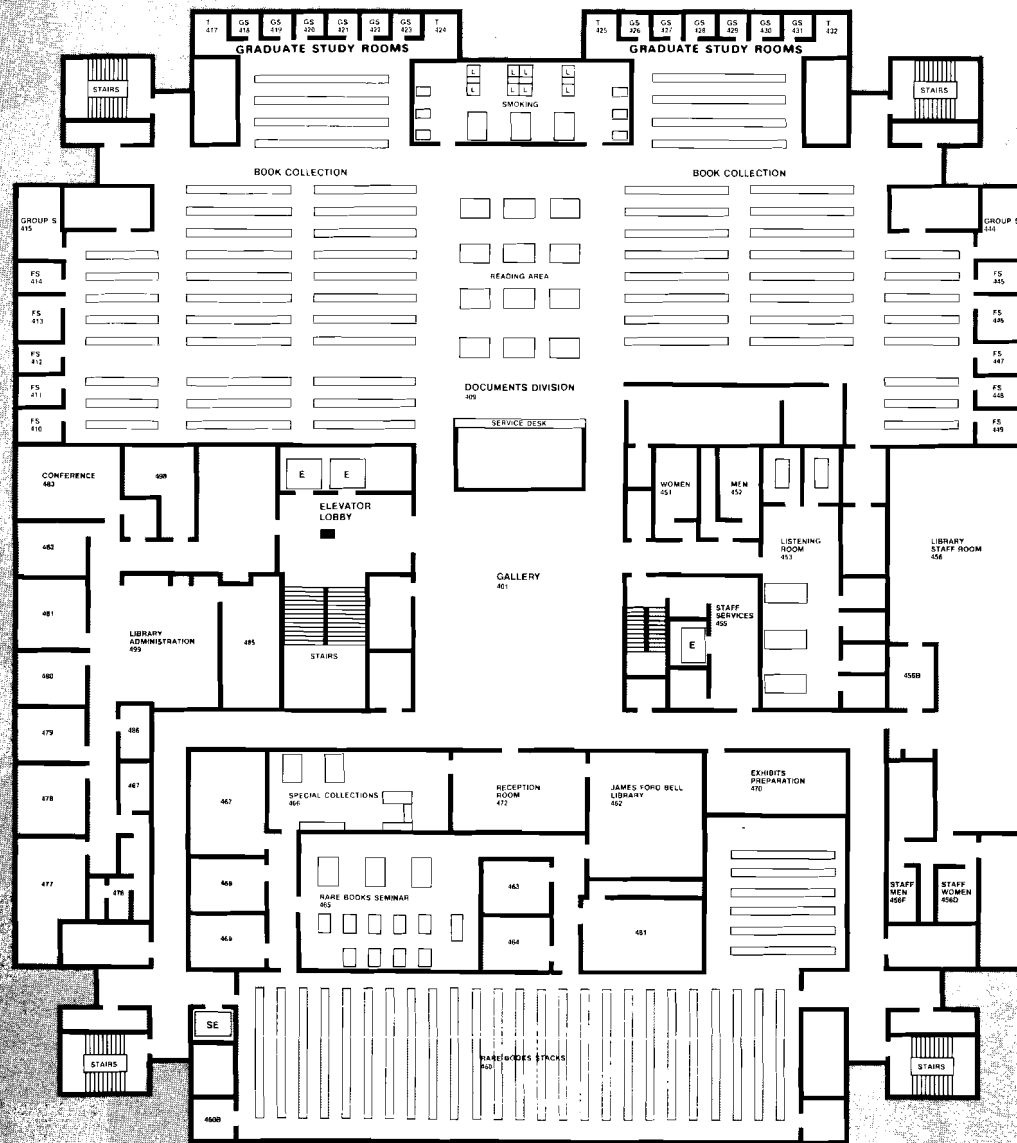
b.



d.



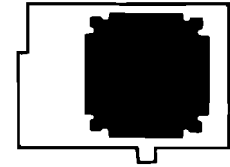
LEVEL FOUR



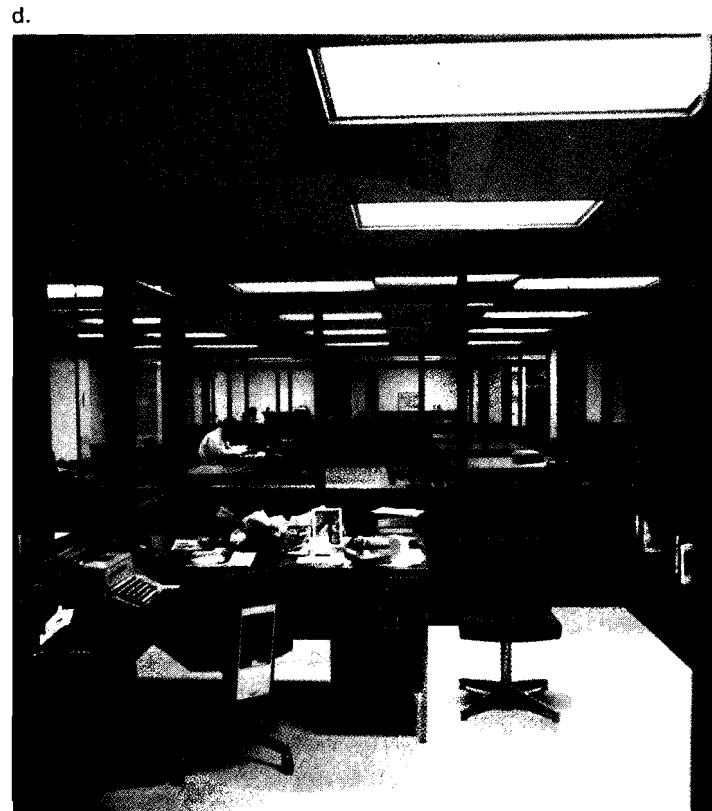
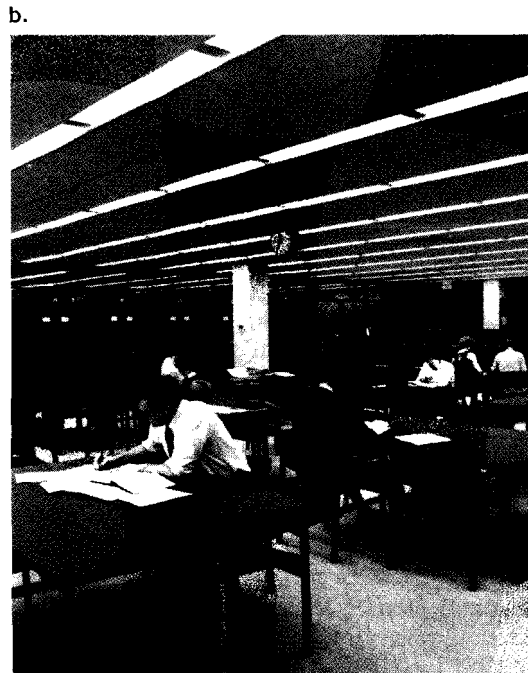
Although four stories above ground, this level is easily accessible from the central stairway or the two main public elevators. On this floor are the library's administrative offices, the James Ford Bell Library, and the Special Collections and Rare Books Department, which share large vault facilities. Their beautifully furnished reading room provides study space for using rare materials which cannot be loaned for outside use.

The east half of this floor houses the newly formed Documents Division, which brings together the library's vast collection of public documents: United States, United Nations, state and foreign papers.

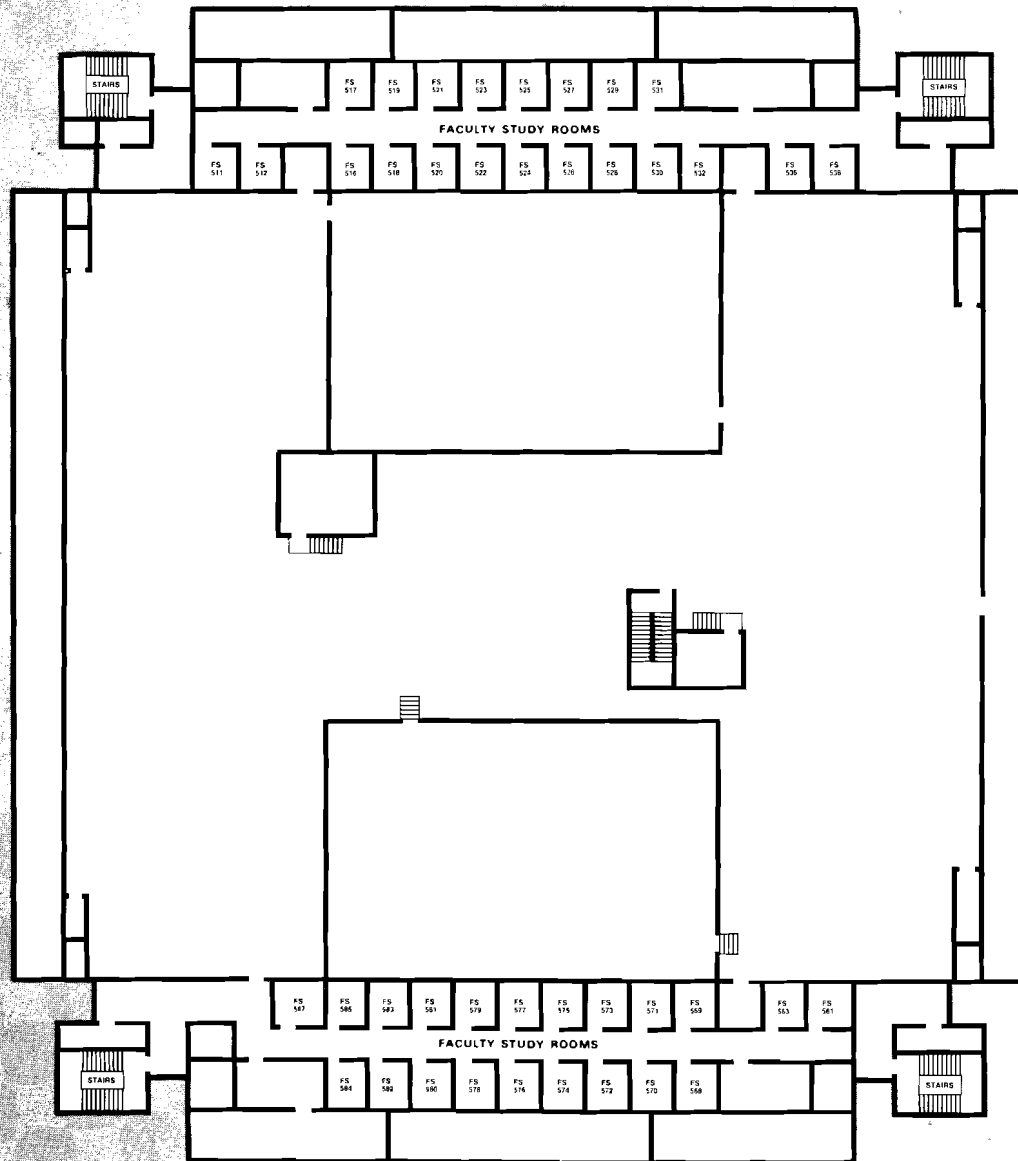
On this floor also are the library's "staff room" and a Listening Room which provides space and equipment for housing and listening to selections from the library's spoken word recording collection.



- a. Staff lounge
- b. Reading area in documents division
- c. Special collections and James Ford Bell Reading Room
- d. Office adjacent to reading room, one of many modern offices



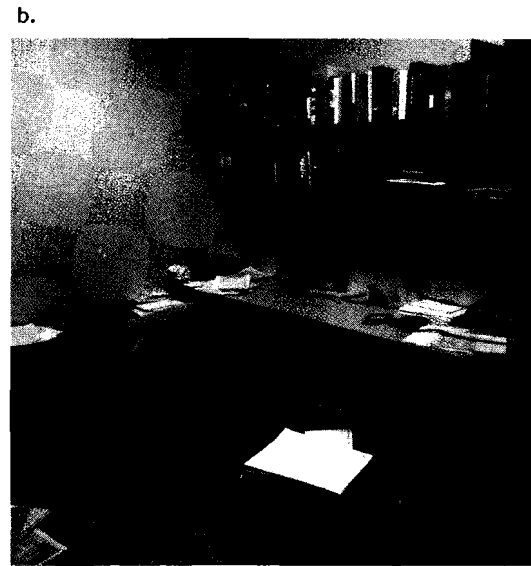
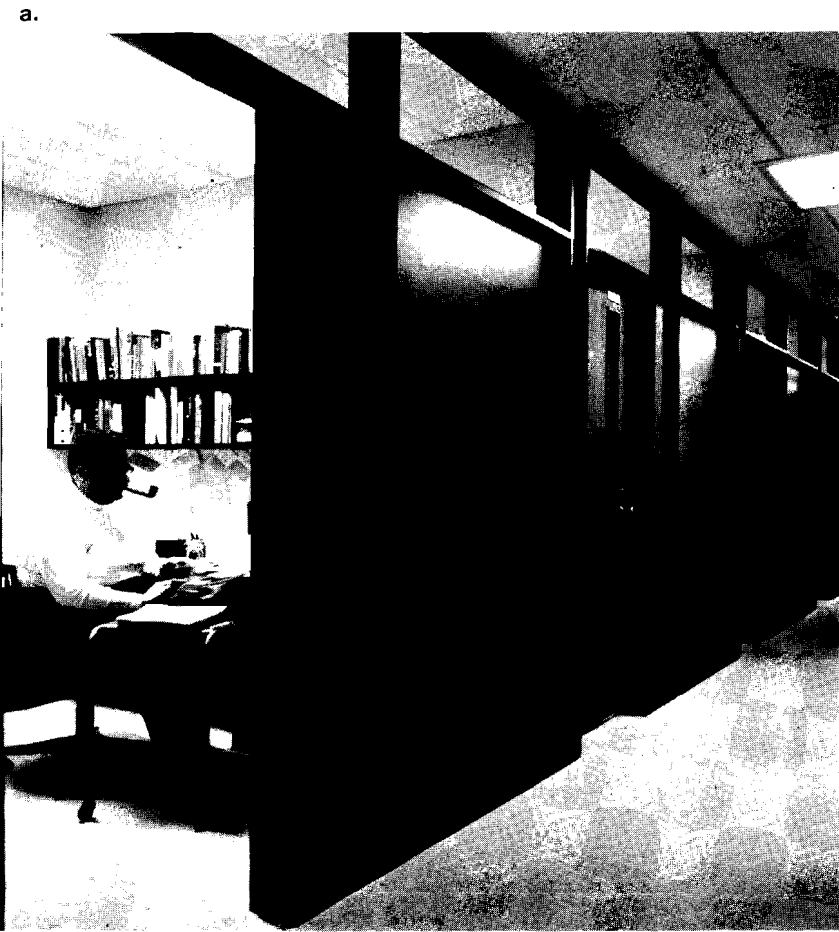
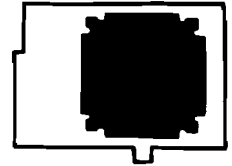
PENTHOUSE LEVEL



On the library's top floor are forty-two faculty studies, the cooling tower and air-conditioning system, and the air handling units for most of the library.

The mechanical equipment is all housed in the center core area with the faculty studies evenly divided along the east and west sides.

The faculty studies in this area are accessible only by stairways from the fourth floor. This makes the area private and quiet for the users of the studies. Although the studies do not have exterior windows they are larger than those found in other areas of the library to compensate for this difference.



a.b. Faculty study room
c. Across the Mississippi

BUILDING DATA

Cost

Two-thirds state appropriations and one-third federal grants from Higher Education Facilities Act.

| | |
|-----------------------------------|--------------|
| Construction | \$8,868,045* |
| Movable Equipment and furnishings | 1,112,418 |

| | |
|--|-------------|
| Total project cost | \$9,980,463 |
| Unit cost (based on 382,313 gross sq. ft.) | |
| Construction cost per square foot | \$23.19* |
| Total project cost per square foot | \$26.23 |

Exterior Dimensions

| | |
|--|----------------|
| Sub-basement and Basement Levels (260' x 340') | 88,400 Sq. Ft. |
| Plaza and Levels 2, 3, and 4 (202' x 228') | 46,056 Sq. Ft. |

Interior Square Footage

| | |
|---------------------|-----------------|
| Assignable area | 245,116 Sq. Ft. |
| Non-assignable area | 137,197 Sq. Ft. |

| | |
|------------------------------|-----------------|
| Total (gross area) | 382,313 Sq. Ft. |
| Ratio of Assignable to gross | 65.4 |

Book and Periodical Capacities

| | |
|--|-----------|
| Individual seating (incl. 138 Faculty Studies) | 2,200 |
| Shelf capacity in volumes | 1,500,000 |

* Includes site preparation and architects' fees

Architects Cerny Associates, Mpls.

Library Consultant Dr. Keyes Metcalf

Contractors

General Watson Construction Co., Mpls.

Plumbing and Heating J. McClure Kelly Co., Mpls.

Venting and Air Conditioning Como Specialty Co., St. Paul

Electrical Premier Electric Construction Co., Mpls.

Elevators R & O Elevator Co., Mpls.

Book Lift, Conveyor, and Pneumatic Tube

System Standard Conveyor, North St. Paul

Escalator Haughton Elevator Co., St. Paul

Caissons M. A. Mortensen Co., Mpls.

Equipment and Furnishings

Stacks Aetnastak

Wood Shelving Knoll

Desks and Chairs General Fireproofing, Knoll, Herman Miller

Vertical Files General Fireproofing, Supreme Steel

Reader Tables and Carrels Hugh Acton and Jens Risom Design

Reader Chairs Hanseatic and Jens Risom Design

Lounge Furniture Herman Miller

Card Catalog Jens Risom Design

Technical Services Area Herman Miller

Library Movers Ray Hamilton and Co.