

2-4	In the Halls
5	In Memory
6-8	Out and About
9	Make a Difference
9	Course Work
10-11	Events



Letter from the Department Head

Greetings!

Hal Grotevant Moves East

In June 2008, Hal will join the faculty of the University of Massachusetts - Amherst as the Rudd Family Endowed Chair in Adoption, in the Clinical Division of the Psychology Department. The position is dedicated to the study of complex issues surrounding adoption.

Join us for Hal Grotevant's farewell party. We don't want to see him go but we do want to wish him well with conversation and refreshments on Friday April 18th, from 3-5 PM in the Department of Family Social Science, University of Minnesota 1985 Buford Avenue, McNeal Hall, Fireside Room (274). RSVP by April 1: fsosrsvp@umn.edu or (612) 625-6202



COLLEGE OF EDUCATION
 + HUMAN DEVELOPMENT
 UNIVERSITY OF MINNESOTA

I am pleased to provide you with our newly redesigned Family Social Science Interactions. It has been a while since you received this publication. We have been undergoing a lot of change lately. I have fondly named this our "Saying Good-bye / Saying Hello" phase.

As you read about FSoS in this issue, you will see that we have sadly lost important colleagues and friends this year – Dr. Wayne Caron, Dr. Gerry Neubeck, and Mrs. Deborah Ann Hovander. We are also saying good-bye to Dr. Hal Grotevant, a faculty member in FSoS since 1990. Hal has accepted an exciting position at the University of Massachusetts as the Rudd Family Endowed Chair in Adoption.

Simultaneously, we are saying "hello" to new faculty, new staff, and our 2007 Graduate Student cohort. I don't think there is anything more exciting or necessary for an academic department than the addition of new folks to help forge and carry on our work. In this issue, we are pleased to introduce you to one of the three new faculty: Abigail Gewirtz, Ph.D., and in upcoming issues we will feature Shonda Craft, Ph.D., and Blong Xiong, Ph.D. – these three individuals bring with them new ideas, energy, and diverse ideas. We also welcome three new FSoS staff members: Susan Andre, Informational Representative; Mary Flesner Beard, Executive Administrative Assistant; and Zachary (Zac) Jenkins, Principal Office and Administrative Assistant. In addition, we welcome our 2007 Graduate Students, a cohort of 11!

What an exciting time for us – in addition to these changes, faculty, staff, and students continue to be involved in challenging work, meaningful outreach and engagement, and multidisciplinary and multicultural scholarship.

This time of transition reminds us to cherish our time together – we never know when things will change and our ability to work side by side will be altered forever. We have honored those who have died and are working hard to carry forward the legacies they left for us; we celebrate the departure of colleagues who are accepting new and rewarding challenges; and we embrace all the new faces among us!

Through it all, Family Social Science continues to thrive and plan for the future.

My Best Wishes,



Abigail Gewirtz

Assistant Professor

CRISIS: A TIME FOR OPPORTUNITY
Parenting, resilience, and the prevention of psychopathology among children exposed to domestic violence, homelessness and other traumatic stressors

Abigail Gewirtz, Assistant Professor, comes to FSoS by way of the U of M's Department of Psychiatry and Institute of Child Development. Prior to that, she was Director of Operations for the National Center for Children Exposed to Violence at Yale University's Child Study Center. She has extensive experience in clinical and policy work with children and families exposed to violence and in the provision of training and technical assistance to communities across the USA implementing multi-system efforts to intervene with children exposed to violence.

Abi's research interests are situated between two distinct yet interrelated areas related to trauma, resilience, and development 1) the impact of exposure to cumulative traumatic stressors (violence and homelessness) on parenting, child and family functioning, and 2) the development and implementation of evidence-based, family-focused interventions in community settings, using community-based participatory methods. Her research and discovery are capable of synthesizing profoundly in the fusion of the two.

Abi's work focuses on children exposed to domestic violence, homelessness, and other traumatic stressors and provides tools to support parents and help them manage their emotions and improve their parenting skills. Her research and discovery are conducted in the community, and in collaboration with community partners,



including domestic violence, mental health, and supportive housing agencies throughout the Twin Cities, as well as the Minneapolis Public Schools, the Minneapolis Police Department, and the State of Minnesota Dept of Human Services' Division of Children's Mental Health. Abi is Co-Investigator on an NIMH-funded grant (Gerald August, Ph.D., PI) to assess the Early Risers intervention as a tailored, selective prevention delivery system for formerly homeless children in supportive housing.

In her almost herculean ambition to bridge the chasm that separates traumatized homeless and formerly homeless children and families from a portal of intervention, Abi and her team focus their work on a tailored, selective prevention delivery system. As Project Director of the Minnesota Child Response Center (Mn-CRC), a Center of the National Child Traumatic Stress Network (NCTSN), Abi is raising the standard of care for traumatized children by adapting and disseminating evidence-based treatments and approaches.

Operating as a virtual center, the Mn-CRC is housed at the U of M, but is a

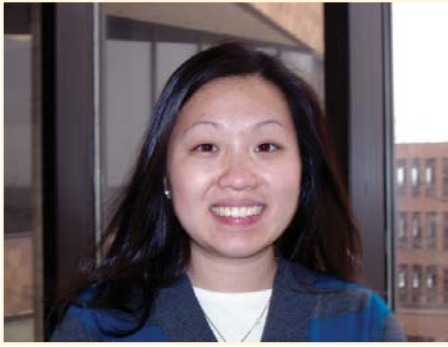
community-university partnership involving fourteen different private and public entities. The partnership was built over several years prior to receiving federal funding in 2005, and was developed to meet the mental health and trauma-informed service needs of children exposed to violence in the Minneapolis-St. Paul area. This broad base of community experts includes mental health providers, culturally specific and mainstream social service providers, supportive housing agencies, schools, police, child service systems, and University of Minnesota researchers.

The goal of MnCRC is to integrate evidence-based interventions into community systems of care for traumatized homeless and formerly homeless children in the Minneapolis/St. Paul metro area, and to create a continuum of care for highly diverse groups of underserved children and families, including refugee and immigrant children. Abi notes that MnCRC's "broad community partnership allows us to pool our resources and expand our reach beyond what any single agency or system could accomplish." Support from both government and private insurers enables sustainability efforts to focus on developing and accessing new and current funding streams. By bridging and sustaining collaborative efforts among and between their partner agencies, MnCRC is able to forge new pathways of care for its target population.

For example, agencies within the Center collaborate to increase access to care for traumatized children by partnering mental health clinics and community 'frontline' agencies (e.g. shelters, supportive housing, police, and schools). Mental health professionals work closely with frontline staff to provide training and ongoing consultation in trauma and child development, to facilitate screening of traumatized children and families, and to adapt and deliver evidence-based trauma-focused interventions. Mental health providers are currently implementing Trauma-Focused Cognitive

“Broad community partnership allows us to pool our resources and expand our reach beyond what any single agency or system could accomplish.”

continued on page 4



Graduate Student: Sheena Thao

Sheena completed her undergraduate work at Carleton College where she majored in Psychology with a concentration in Educational Studies. After graduating with her bachelor of arts degree in 2006, Sheena left the pastoral setting of Northfield and returned to the Twin Cities to begin working for the Center for School Change at the Hubert H. Humphrey Institute as an Outreach Specialist.

In this position, Sheena works with school administrators, adolescent students, parents, and community members to help promote college prep programs, such as Post Secondary Enrollment Options. She also provides outreach assistance to minority students and serves as a mentor for the St. Paul Public School's Multicultural Excellence Program.

Sheena has written articles about educational opportunities for various community newspapers such as *Hmong Today* and *Asian American Press*. In January, Sheena was interviewed by Don Shelby of WCCO radio about the benefits of small schools across the United States.

Sheena is currently pursuing a masters degree in Family Social Science (Plan B track). Her main research interests are parent-adolescent relationships, multicultural families, and immigrant families. Sheena resides in Burnsville with her husband and is expecting their first child in April.



Undergraduate Student: Annie Johnson

Annie Johnson is a third year student in the FSoS department. In-between high school and college, Annie took a year off from the classroom environment to plunge into work at an inner-city orphanage in San Jose, Costa Rica. This hands-on experience provided her the opportunity to blend daily practice with her keen insight, setting in motion her commitment to focus her education on social issues.

Annie is working towards completing the Family Social Science major program, as well as minor programs of Family Violence Prevention, Social Justice, and Youth Studies. Her current goals include completing a research internship with the Minnesota/Texas Adoption Research Project, attaining a field work internship with Children's Home Society and Family Services, and further working towards graduate studies at the U's School of Social Work.

Annie was William Goodman's nomination to attend the U of M's Social Justice Leadership Retreat in January. This three-day retreat provides an amazing and unique forum for students to hold open dialogue about issues of cultural pluralism and social justice. Annie said the retreat was a significant, meaningful, and energizing experience for her at this time in her undergraduate career. Annie is currently a Co-President of the Roundtable with Alie Sobczak.

"Annie has engendered relationships between students and faculty that exemplify her kindness, trustworthiness, and goodness. Her behavior demonstrates hospitality for all students with a mind that is inclusive of varied ideas as well as cultures. She has proven her unique leadership energy here in the department/college, the local community, and the wider world. She behaves with respect, politeness, and a deep goodness that marks her difference."

William Goodman

Abigail Gewirtz cont.

Behavioral Therapy (TF-CBT) in supportive housing locations and, through a collaborative effort with the Minnesota DHS, Division of Children’s Mental Health, over 40 clinicians from eight different agencies across the state are being trained on Trauma Focused Cognitive Behavioral Therapy. The MnCRC’s child development-policing program (CDPP) increases access to care for traumatized children by reaching families who call the police for violent incidents involving children; more than 70% families reached by CDPP over a two-year period had never previously accessed social or mental health services for violence exposure. CDPP team members from several agencies reflect the diversity of the community served and provide psycho-educational material for families in several languages.

Significant numbers of traumatized children served by shelter and housing agencies do not meet diagnostic criteria for PTSD or trauma-related distress, but do exhibit acting-out symptoms. Homeless parents may be overwhelmed with multiple stressors and are more likely to have been maltreated as children themselves, providing them little in the way of positive parenting role models. Moreover, frontline providers rarely have access

to evidence-based preventive interventions that they can implement (rather than relying on sometimes elusive mental health professionals!) For these reasons, the MnCRC is adapting and implementing a group-based model parenting curriculum, Parenting Through Change (Forgatch & DeGarmo, 1999), aimed at reducing trauma-related conduct problems in homeless children by supporting parenting and improving family interactions.

Parenting through change (PTC) uses the Oregon model of Parent Management Training (Patterson, 1986, 2005), which is based on decades of research with high-risk (including violence-exposed) children and families and which has been used in several effective treatment models. Because of its focus on parenting in the context of conflict and crisis, PTC is appropriate for adaptation and dissemination with homeless and violence-exposed families. Although the training is extensive, the intervention does not require delivery by mental health professionals,

thus MnCRC’s adaptation and implementation team includes frontline providers such as shelter and housing advocates. The group intervention format offers: (i) social support to mothers who are often isolated and lacking in social support (ii) cost-effectiveness, and (iii) an appropriate delivery mode for domestic violence and homeless shelters or supportive housing.

Through their collaborative work in the Minneapolis-St. Paul metropolitan area, MnCRC hopes to provide the seeds for the development of a model network that will be replicable throughout the larger NCTSN.

Abi is folding together a diverse collection of agencies and indeed, the stretching boundaries of best practices today. Her innovations and influences bring together numerous resources and her research and discovery create collaborative opportunities in times of crisis.

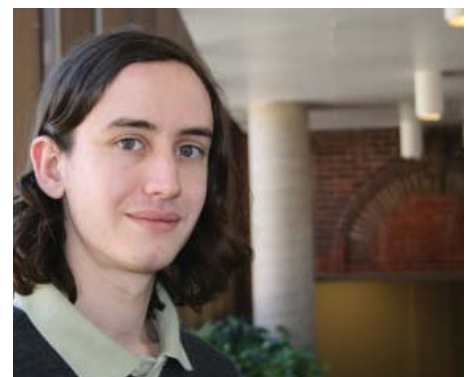
Susan Andre, Informational Representative, began working at FSoS in January. She received her B.F.A. from the San Francisco Art Institute and M.F.A. from the School of Visual Arts in New York City. She has worked in marketing/communications positions for museums, foundations, and architects. Susan is currently working on a series of paintings/drawings that range in scale from pocket-sized samples of water from around the world to life-sized environmental settings. She shares a busy life with her husband, whom she fell in love with at age 13, their precocious eight year old daughter, their silly cat, and an adorable 1906 fixer-upper house that one day this century will be renovated.

Zachary Jenkins joined FSoS in December 2007 as a Principle Administrative Specialist and Business Support Liaison. He moved to Minneapolis shortly after graduating with a B.A. from Hampshire College this past spring, and briefly worked in the University of Minnesota’s School of Social Work before accepting his current position. While in college, Zac studied a combination of traditional and modern music theory alongside cognitive science and psychoacoustics, producing an interactive “intuitive composition machine” as his qualification for graduation. In his spare time, Zac continues his work on a variety of music-related software, reads, and bicycles.

Attention Alumni
We are looking for you
 Specifically, we’re looking
 for content for
INTERACTIONS

Send news of your educational achievements, promotions, recent awards or project announcements, and images (300dpi, min 3 x 3, jpg, less than 3MB) to sandre@umn.edu

Reconnect with FSoS



Gerhard (Gerry) Neubeck 1918-2008

It is with great sadness that we say goodbye to our dear friend, colleague, and mentor Gerhard (Gerry) Neubeck. Gerry began his professional career at University of Minnesota in 1948 after already experiencing a lifetime of fortune and tumult.



As a Jewish teenager from Dortmund, Germany, Gerry nearly qualified for the 1936 Berlin Olympic Games in the 3000m run. Soon after, he realized he had to leave his home country. After immigrating to the United States with his wife Ruth in the late 1930s, Gerry became one of the nation's foremost leaders in the fields of human sexuality and marriage and family therapy (MFT). He served terms as president both of the National Council on Family Relations (NCFR) and the American Association for Marriage and Family Therapy (AAMFT). After graduating from Columbia University, he went on to accomplish a number of 'firsts' in his field. In the 1960s he taught the first college course on human sexuality.

Profiled in Look magazine, this course gained Gerry scores of attention for his work. He is credited for being the first to use group sessions for marriage therapy and also was the first to pen a book on the topic of extramarital affairs. In 1972 he joined the department of Family Social Science, where for many years he ran the marriage and family therapy program. Over the course of his tenure, Gerry was pivotal in training countless MFT experts including David Olson and Jim Maddock.

After retiring in 1986, Gerry and his wife Ruth spent much of their time keeping busy with their long-time hobbies. Gerry was a prolific writer of poetry and Ruth a potter (dubbed the "Poet and the Potter). Some of Gerry's poetry has been published and crossed over into the academic world to appear in textbooks focusing on family relations. Since his retirement, Gerry has remained a regular around the department. He read his poetry at everything from new graduate student welcoming functions to faculty retirement parties. Gerry said during a 2004 interview: "Family Social Science has always stood on the strength of great faculty. Not only the talent of the faculty—including multiple NCFR and AAMFT presidents—but also the intimacy. The faculty has always been very close." Gerry will be greatly missed. Donations honoring Gerry's life can be made to the Family Social Sciences Neubeck Scholarship Fund (2191) at the University of Minnesota 800-755-2187 or www.giving.umn.edu

Deborah Ann Hovander 1949 - 2008

FSoS extends deepest condolences to David Horstmann and his daughters, Eve and Camille, upon the passing of, wife and mother, Deborah Hovander on January 21st. Deborah received her master's degree from FSoS and was a beloved therapist in private practice. Deborah, known for being a sensitive, articulate, and brilliant person, had the warmth of an understanding heart. Her presence will be sorely missed. A memorial service to celebrate her life is being planned for May 25th, the anniversary of Deborah's birth, at 2 PM in the Festival Hall of the Minnesota Waldorf School, 70 East County-Road B, Maplewood, MN. For more information contact davidhorstmann@msn.com

**Wayne Caron
Senior Lecturer and
Assistant Professor**

Our friend and colleague Wayne Caron died unexpectedly on August 24, 2007.

**"First I am a father.
Then I'm a therapist.
Next a teacher.
Then a scientist.
But mostly a friend."**

The department has created a Memorial Page (http://blog.lib.umn.edu/hgroteva/caron_page). Send tributes, memories, poems, stories or pictures to: caron@umn.edu (submissions go to those of us who are managing the blog entries). We hope that this Memorial Page will be helpful to all of Wayne's family and many friends — whenever any of us need a little smile about Wayne.



We have established a memorial fund to honor his extraordinary life — his dedication to teaching, mentorship, and families dealing with dementia. The name of the fund is the Wayne Caron Memorial Fund. Funds contributed in honor of Wayne will be used for strategic initiatives around families and gerontology. If you wish to contribute to the fund, please forward your contributions to the University of Minnesota Foundation www.giving.umn.edu with a notation that the monies are for the Wayne Caron Memorial Fund (1938).

William Turner was named a Robert Wood Johnson Health Policy Fellow for 2007-2008.

As part of the fellowship, Turner and seven other health professionals from around the country are spending a year in the nation's capital helping to shape American health care policy. Following is an excerpt of his mid-year of his report:

The RWJ Fellowship has been an incredible experience and has exceeded my expectations. It has opened my eyes to the overwhelming health care needs of this nation and enlightened me toward the manner in which those of us in academia can help find solutions.

the Heritage Foundation, the American Enterprise Institute, Families USA, American Medical Association, Pharma, American Association of Medical Centers, Health Affairs, the Bureau of Indian Affairs, the Food and Drug Administration, the Department of Health and Human Services, the AARP, the National Institute on Aging, the Centers for Medicaid and Medicare, the Centers for Disease Control and Prevention, the National Institutes of Health, the Congressional Black Caucus, the Congressional Hispanic Caucus, as well as the leaders of the nation's leading schools of Public Health including Harvard, Johns Hopkins, the University of North Carolina, Emory University, and George Washington University.

say that regardless of how you might feel about his politics, that he is truly a wonderful person). My office is located right next to his in the Hart Senate office building. Even though he is heavily engaged in his presidential campaign, I have been able to speak with or meet with him on a weekly basis. His health team is headed by Dr. Dora Hughes, an incredibly talented person who is one of the most widely respected health advisors on Capitol Hill. She is enormously talented and has a B.S. in biomedical engineering from Washington University, an M.D. from Vanderbilt Medical School, and an M.P.H. from the Harvard School of Public Health. Dora is my mentor and I work closely with her on a daily basis. I was brought on board to head up Senator Obama's mental health agenda and am in charge of a portfolio of legislation for the Senator that includes both mental and physical health. Senator Obama is a member of the powerful Senate HELP (health, education, labor, and pensions) Committee, chaired by Senator Ted Kennedy, and as such, I am his representative on that committee.

Specifically, the Senate legislation that I am responsible for includes the following:

- *The Paul Wellstone Mental Health Parity Act* sponsored by Senator Kennedy, Senator Enzi, and Senator Obama.
- *The Minority Health Improvement and Health Disparities Elimination Act* sponsored by Senator Kennedy and cosponsored by Senators Obama and Clinton. Those of you who know me know this legislation is especially close to my heart, moreover, given the bills cosponsors, it is a particularly interesting time to be working on this legislation.
- *The Stop Stroke Act* in addition to the physiological treatment of stroke, this bill focuses great attention on the social determinants of treatment, family interventions, mental health interventions, and culturally appropriate interventions.
- *The Melanie Blocker Stokes MOTHERS Post Partum Depression Act* which focuses on both prevention and treatment of post-partum depression.

continued on page 7



2007-2008 Robert Wood Johnson Health Policy Fellows L to R: Renee Fox, M.D., Deborah E. Trautman, Ph.D., R.N., Nancy Ridenour Ph.D., R.N., C.S., F.N.C., F.A.A.N., Susan Hinck, Ph.D., R.N., Kathleen Klink, M.D., Lupita Salazar Letscher B.S.N., M.S., R.N., Daniel Derksen, M.D., William Lofton Turner, Ph.D.

The RWJ Fellowship is a two part experience. The first part involves an intense four-month orientation at the Institute of Medicine. During this orientation, I, and the other seven RWJ Fellows, met with leaders in the federal government with a role in the health care system - from the President and his cabinet, to the justices of the Supreme Court, to each U.S. Senator and Congressman who plays a major role in health care. In addition, we have been engaged with the Kaiser Family Foundation, the Brookings Foundations,

Currently I'm in part two of the fellowship. One of the special features of the RWJ Fellowship is that each fellow gets a nine-month capitol hill assignment in a Senate or congressional office wherein the fellow becomes a member of the legislative team of the senator or congressman and helps him/her to develop and implement his/her health policy agenda. I am very fortunate to have been chosen by Senator Barack Obama to be a member of his health policy team (I must

Jan McCulloch Reappointment as FSoS Department Chair

After reviewing candid and informative comments provided as a part of the review process, Dean Bailey was pleased to announce the feedback was supportive for the continuation of Jan's appointment. The Dean offered the reappointment invitation on January 17th and Jan accepted.

RWJ Health Policy Fellow cont.

- *The National Healthy Start Reauthorization Act* which focuses on early childhood development and parenting.
- *Substance Abuse and Mental Health Services Association Reauthorization Act*. It's nice after years of being evaluated by them for grants that I get to be a part of their evaluation (smile).
- *Indian Health Services Reauthorization Act*. This has been especially rewarding work and I have gotten to know quite well the leaders at the Indian Health Service.

For all of the above legislation, I have been able to add MFTs to the list of preferred providers. In closing, I am very busy, learning a lot and hopefully contributing to Senator Obama's legislative agenda as well.

In addition to Senator Obama, this year's RWJ fellows are in the offices of Senators Clinton, Rockefeller, Bingaman; Speaker Pelosi; the House Ways and Means Committee; Senate Finance Committee; and the Congressional Budget Office.

I am having a great experience. Although I love Washington, I look forward to being back with all of you in September.

Take care,

William Turner

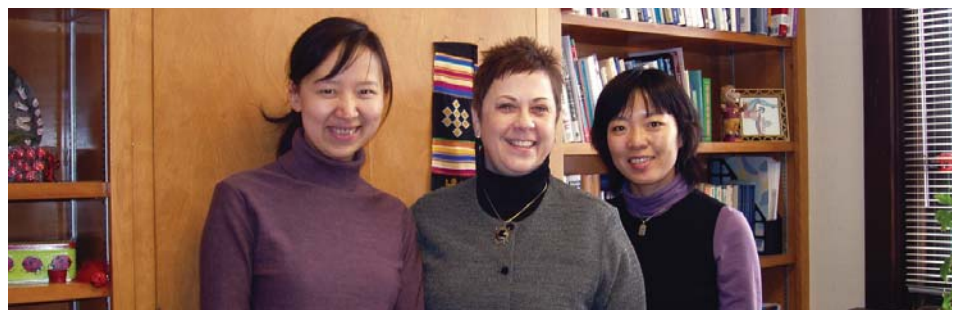
Faculty News

Sharon Danes was elected Vice Chair of the Family Business section of the U.S. Association for Small Business and Enterprise.

WCCO radio interviewed **Bill Doherty** in January to discuss Birthdays without Pressure, a project he launched in 2007 with a group of parents and professionals to start a local national conversation on what's happened to birthday parties. www.BirthdaysWithoutPressure.org

Hal Grotevant was quoted in the New York Times article *With Open Adoption, a New Kind of Family* (2/24/08).

David Olson and **M Janice Hogan-Schiltegen** were named National Council on Family Relations (NCFR) fellows. Fellows are nominated by their peers and selected for their history of outstanding contributions Family Studies."



L-R: Yang Qing, Catherine Solheim, Yan Hongyan

Yan and Yang were participants in the Bilingual Teachers Training Program organized by the Beijing Educational Committee and the University of Minnesota China Center during fall 2007 semester. Yan teaches a course on personal finance. She observed several of Dr. Solheim's classes in her Personal and Family Finance course to learn about the content covered and the teaching methods used. She was particularly interested in the use of case studies to help students apply concepts to different family situations. They also spent time exchanging information and ideas about our two countries' approaches and experiences with personal finance.

INTERACTIONS is published quarterly by the Department of Family Social Science, University of Minnesota. It is distributed to alumni, students, faculty, staff, and friends of the department. We welcome your comments, ideas, suggestions, opinions, and news items which you can send to sandre@umn.edu

B. Jan McCulloch, Department Head
Susan Andre, Editor and Layout Design

The University of Minnesota is committed to the policy that all persons shall have equal access to its programs, facilities and employment without regard to race, color, creed, religion, national origin, sex, age, marital status, disability, public assistance status, veteran status or sexual orientation. ©2008 Regents of the University of Minnesota. All rights reserved.

Paul Rosenblatt has received a contract from the State University of New York Press for a book tentatively called, *Shared Obliviousness in Family Systems*. Paul is speaking this Spring at the annual meeting of the Association of Deaths Educators and Counselors (in Montreal) on "Interracial Relationships in End of Life Care."

MN Daily covered the **Liz Wieling** and **Paul Orieny** 02/22/08 Kenyan event in the article: *Group helps Kenyans cope with violence*.

Virginia Zuiker was quoted in the MN Daily article *Loan Refunds: Spend on spring break or rent?* (2/21/08).

Student News

Dorothy Rombo, is recipient of an International Peace Scholarship Fund. The Fund provides scholarships for international women students pursuing graduate **continued on page 8**

Student News cont.

study in the United States and Canada. Dorothy, featured in P.E.O. Record (Philanthropic Educational Organization magazine), is also the Designated Award student who received uninterrupted time to work on her studies this past summer while her four children spent a week of summer fun and activities with a BL Chapter host family in Madison, WI.

Jaerim Lee received the Phi Upsilon Omicron, Alpha Chapter, 2008 Margaret Drew Fund Graduate Scholarship. The scholarship provides financial assistance to Alpha Chapter members who demonstrate scholastic ability, leadership, and professional promise in the field of family and consumer sciences or a related area.

Paul Orieny is the Center of Victim of Torture's new Psychology Fellow. In this position he uses his teaching skills to serve clients and also to help clients understand the ways one person's trauma might affect their whole family.

Seohee Son received the Sookmyung Women's University Alumnae Scholarship. It is awarded to one alumnae for scholarship and future leadership potential. Seohee received two degrees from Sookmyung Women's University in Seoul Korea.

The FSoS undergraduate academic organization **Roundtable** received recognition from Feed My Starving Children (FMSC) for their volunteer work. On January 25, 10 students prepared 8,640 meals for international disbursement. The group from FSoS learned about FMSC services and how FMSC's food involvement impacts the world.

Nikki Buckholz has been selected to participate in the 2008 Tom Burnett Advanced Leadership Program. Each spring 15 University students are chosen to participate in this program featuring life and career mentoring, leadership workshops, and in-depth assessment of student's personality traits, potential career paths, and leadership skills, so that each one can make a difference one person at a time. FSoS faculty member, Cathy Solheim nominated Nikki for this program.

Jane Newell was named Alumni of

Distinction at Anoka Ramsey Community College in August 2007. Jane received her Associates of Art degree from Cambridge Community College in 1989. She was nominated by her mentor and advisor Claudia Kittock who sparked her interest in the study of families.

Jason Wilde was recipient of the 2007 Neubeck Scholarship. Jason has received \$500 in professional development funds for presentations and work at NCFR.

2007 Dean's List

Congratulations!

Byron Adams
 Megan E. Ander
 Chelsea M. Barnes
 Lauren H. Behnke
 Stephanie Lynn Bonsen
 Jennifer Nicole Bradley
 Nicole Lea Buckholz
 Lee Robert Chriske
 Corie Christine Custer
 Lindsey M. Gau
 Erica L. Hagelberg
 Zoua Her
 Kendra L. Hess
 Cora Jean Hietpas
 Gabrielle Marie Hurd
 Ann C. Johnson
 Krystal K. Kaminski
 Diane Hanna Kim
 Amber Marie Klause
 Allison S. Klug
 Christa J. Lane
 Allison N. Lapham
 Dana B. Laudolff
 Stephanie Mae Levine
 Sara Mae Lybeck
 Kelli J. Mattson
 Nicole Jean Mortensen
 Zondwayo Nkindu Mulwanda
 Meredith K. Neumann
 Julia Andrews Perkins
 Ann L. Person
 Emily Helen Przybylski
 Judith L. Ross
 Erin K. Ryan
 Teri Joyce Schweiger
 Melinda Jo Serbus
 Sarah G. Siems
 Brianne Leigh Simon
 Laura Ann Skubic
 Kendra Wells Sorge
 Cherry Vang
 Jade E. Wageman
 Emily Kaye Worms
 Lucia M. Yess

The following graduate students successfully defended their dissertations:

Jared Russell Anderson

Award Date: 10/31/2007
 Advisor: William Doherty
 Thesis/Project Title: Developmental Trajectories in Lower-Quality Marriages: Predictors and Outcomes

Kevin Green

Award Date: 12/31/2007
 Advisor: William Doherty
 Thesis/Project Title: Understanding College Students' and Parents' Perception of Cell Phone Communication in Family Relationships: A grounded Theory Approach

Memory Gremes

Award Date: 12/31/2007
 Advisor: Kathryn Rettig
 Thesis/Project Title: Important Topics Regarding Financial Education Voiced by Minnesota Spanish Speakers

Liddy Hope

Award Date: 10/31/2007
 Co-Advisors: Martha Rueter and Catherine Solheim
 Thesis/Project Title: Exploring the Family Loves of People in Prostitution: A Contextual Approach Using a Human Ecological Systems Model

Gina Kelly

Award Date: 12/31/2007
 Co-Advisors: Jean Bauer and Catherine Solheim
 Thesis/Project Title: Quality of Life Family Congruence in Nursing Homes

Nicola Dominique Rodrigues

Award Date: 11/30/2007
 Advisor: Paul Rosenblatt
 Thesis/Project Title: Meanings Underlying Parent Narratives of Living with and Caring for their Preadolescent Child with Cerebral Palsy

Make a difference

Your gift is an investment in our collaborative learning community and your support will help us keep our community vital. With your donation we can continue to educate and support families, train students of all disciplines, and reach out to connect with and train professionals in your community.

Together, we can make a difference.

You may make a gift to the Department of Family Social Science through the University of Minnesota Foundation. You may choose to designate your gift to any of the funds below:

- Friends of the Family Assistantship (3911)
- Shirley Zimmerman Fund (5487)
- David Olson Fellowship (5816)
- FSoS Strategic Initiative (2748)
- Jan Hogan Fellowship (5734)
- Family Caregiving Program (5995)
- Neubeck Scholarship Fund (2191)
- Wayne Caron Memorial Fund (1938)
- Ott International Student Fellowship (1883)
- David H. and Karen Olson Marriage and Family Fellowship (1920)
- Family Stress and Resilience Endowment (7645)

You may also choose to memorialize a loved one by donating in their name. Visit www.foundation.umn.edu or call 612-626-8560 or 1-800-775-2187 for more information.

Thank you,

Brian McCulloch
Family Social Science



A Sampling of Summer Classes 2008

Are you looking for a few extra credits before leaving on your summer holiday? FSoS graduate students are teaching classes to inspire, intrigue, and enliven your academic pursuits. Check out these two-day classes. For a complete listing go to: <http://fsos.cehd.umn.edu/courses.html>

Ethical Issues in Family Therapy (4150 Sec 101) Cynthia Meyer
May 30 - 8:30 to 4:55 and May 31 - 8:30 to 3:50

This course introduces students to ethical issues that helpers, particularly those who work with couples and families, will face in their practices. While awareness of codes of conduct and legal statutes that regulate practice is essential, this course also focuses on helping students recognition of themselves as helpers and ways their own values and beliefs impact their client work.

Families in Television from the 1950s to Present (4150 Sec 102) Julie Zaloudek
June 6 - 8:30 to 4:55 and June 7 - 8:30 to 3:50

This course explores the portrayal of families on television from the 1950s to the present. Students will view a variety of television sitcom families, comparing them with historical trends in family development; read chapters that examine the impact of the media's portrayal of families on real-life families; and consider whether or not the depictions of families on television accurately reflect the functioning of American families. Issues of family diversity will also be discussed.

Working with Immigrant Families (4150 Sec 104) Dorothy Rombo
June 13 - 8:30 to 4:55 and June 14 - 8:30 to 3:50

The course explores unique characteristics immigrant families while focusing on family processes that sustain them and gives voice to immigrants through their family dynamics. Immigrants' stories (anecdotes) and employees from agencies that work with them will contribute to the learning.

Interfaith Families: U.S. Trends and Experiences (4150 Sec 001) Julie Zaloudek
June 20 - 8:30 to 4:55 and June 21 - 8:30 to 3:50

This course explores the topic of interfaith families by examining trends in interfaith marriages and domestic partnerships in the United States and the challenges that accompany such unions. Students will learn about the diverse nature of interfaith families, their strengths and resiliences, challenges, and resources. The macro level impact of increased interfaith unions on family life will also be addressed.

The Ties that Bind: Working with Stepfamily and Blended Family Formations (4150 Sec 003) Holli Trombley

June 27 - 8:30 to 4:55 and June 28 - 8:30 to 3:50

This course focuses on gaining in-depth understanding of how stepfamilies successfully manage complex family dynamics and relational histories as well as challenges many face in the process of becoming a cohesive unit. Stressors examined include; complexity of family structures and relationships, role ambiguity, financial pressure, former spouse relationships, stereotyping, unrealistic expectations, family conflict, lack of legal status, and kinship terms. Laws and policies that help or hinder the formation and development of a stepfamily identity are studied. Furthermore, various cohorts of the stepfamily unit discussed include couple relationship, parent/child relationship, stepparent/child relationship, influence of the developmental status of the child regarding adjustment to stepfamily life. Theoretical frameworks, solutions, interventions and clinical techniques are presented to enhance greater competence, effectiveness and sensitivity in working with stepfamilies/blended families.



Heros Never Die

What's a hero you may wonder,
Is it only those who save us?
Or someone who was like Gerry,
Who introduced ideas to ponder.

He shared with FSoS right up to the end,
Poetic words aplenty he would write.
So a memorial cannot be held,
Without a poem dedicated to his life.

Gerry, who has left much to this world,
Better it is because we knew him.
For a "hero" of ideas he certainly was,
A legacy of words that lasts an eternity.

Sharon M. Danes
Family Social Science



Lindiwe Sibisi, graduate student guest lecturer at William Goodman's February 11th class FSoS 2101: Preparation For Working With Families.

Lindiwe's presentation (included traditional Swaziland clothing, cultural artifacts, and everyday household items) created a meaningful lecture for the 70 undergraduate students. After the class, a student from Laos commented that she was able to see connections between Lindiwe's culture and her own. This surprised her and at the same time made her feel culturally recognized in the classroom. Therefore, the goal of having students comprehend, and appreciate, their own cultural heritage through the listening to the knowledge of another culture was achieved!

Hal Grotevant's Farewell Party

Friday, April 18

McNeal Hall

Fireside Room (274)

3 - 5 PM

RSVP: fsosrsvp@umn.edu

Cake Day**Last Day of Instruction**

Celebrate the completion
of the Spring 2008 Semester

Thursday May 8

McNeal Hall

Commencement Party**Open House**

Wednesday May 14

McNeal Hall

Fireside Room (274)

3 - 4:30 PM

Spring 2008**College of Education and****Human Development****Commencement**

Wednesday May 14

Northrop Memorial Auditorium

7:00 - 9:00 PM

<http://cehd.umn.edu/students/Commencement.html>

**American Association for
Marriage & Family Therapy****66th AAMFT Annual
Conference**

Ethical Legal Challenges in
Contemporary Family Therapy
October 30 - November 2, 2008
Memphis Convention Center
Memphis, TN

**National Council on Family
Relations****70th NCFR Annual
Conference**

Lenses on Family
November 5-8, 2008
Peabody Hotel - Little Rock, AR



Jaerim Lee accepting the 2008 Margaret Drew Fund Graduate Scholarship in February.



Nikki Miller, Volunteer Coordinator with Planned Parenthood was guest lecturer at William Goodman's March 3rd class FSoS 2101: Preparation For Working With Families.



Jean Bauer and Dorothy Rombo at the College of Education and Human Development Research Day in February.

Family Social Science Spring Colloquium

Wednesdays 12:00 to 1:00 PM, 274 McNeal Hall, Fireside Room
open to all faculty, staff, students, and interested persons

March 5

The Journey of Living with Dementia. The Work of The Wayne Caron Family Caregiving Center, A Collaborative Learning Community
Adine Stokes, Wayne Caron Family Caregiving Center

March 12

The Family and Community Neighborhood in CEHD: What's Happening and How to Plug In
Bill Doherty, Family Social Science

March 26

Getting Married in Korea: Economic, Historical, and Legal Contexts
Jaerim Lee and Soehee Son, Ph.D. students, Family Social Science

April 2

Couple Relationships, Deployment Stress, and Posttraumatic Stress in Returning Iraq/Afghanistan Soldiers
Christopher Erbes and Melissa Polusny, Minneapolis VA Medical Center

April 9

Online Research Methods among Family Social Scientists: The Diffusion of an Innovation
Heather R. Haberman, Ph.D. Candidate, Family Social Science

April 16

The CEHD Survey Tool: An Overview
Victoria Neau, Project and Support Coordinator, CEHD Academic Technology Services

April 23

Family Professional Needs and Opportunities in China: Observations and Reflections on a Recent Visit
Jason L. Wilde, M.S., Family Social Science graduate student

April 30

Assessing Student Learning: Instructional Activities and Behavioral Outcomes
William Goodman, Family Social Science

May 7

Senior Portfolio and Research Review Day

For more information contact Sara Axtell, Community-Campus Health Outreach Liaison axtel002@umn.edu



Herb Grant, Ph.D. candidate, FSoS, February 27 Colloquium:
An Overview of Historical Trauma



Betty GreenCrow, University of Minnesota American Indian Elders Council
February 20 Colloquium:
History of Boarding Schools



Atum Azzahir, Executive Director, Elder Consultant in African ways of knowing Cultural Wellness Center
January 23 Colloquium:
Sharing Intellectual Authority in Research



Susan Walker, Associate Professor, Families, Youth, and Communities, Curriculum and Instruction, February 6 Colloquium:
Low income, rural mothers' decisions about child care: How are they affected by family structure, commitments, and relationships?



(L-R) Rosa E. Garcia-Peltoniemi, Senior Consulting Clinician, Center for Victims of Torture (CVT), Liz Wieling, Family Social Science, and Neal Porter, Director of International Services, CVT, January 30 Colloquium:
Center for Victims of Torture and Collaborative Initiatives with FSoS