

TEXT LEGEND

UNIT DESIGNATION & DESCRIPTION

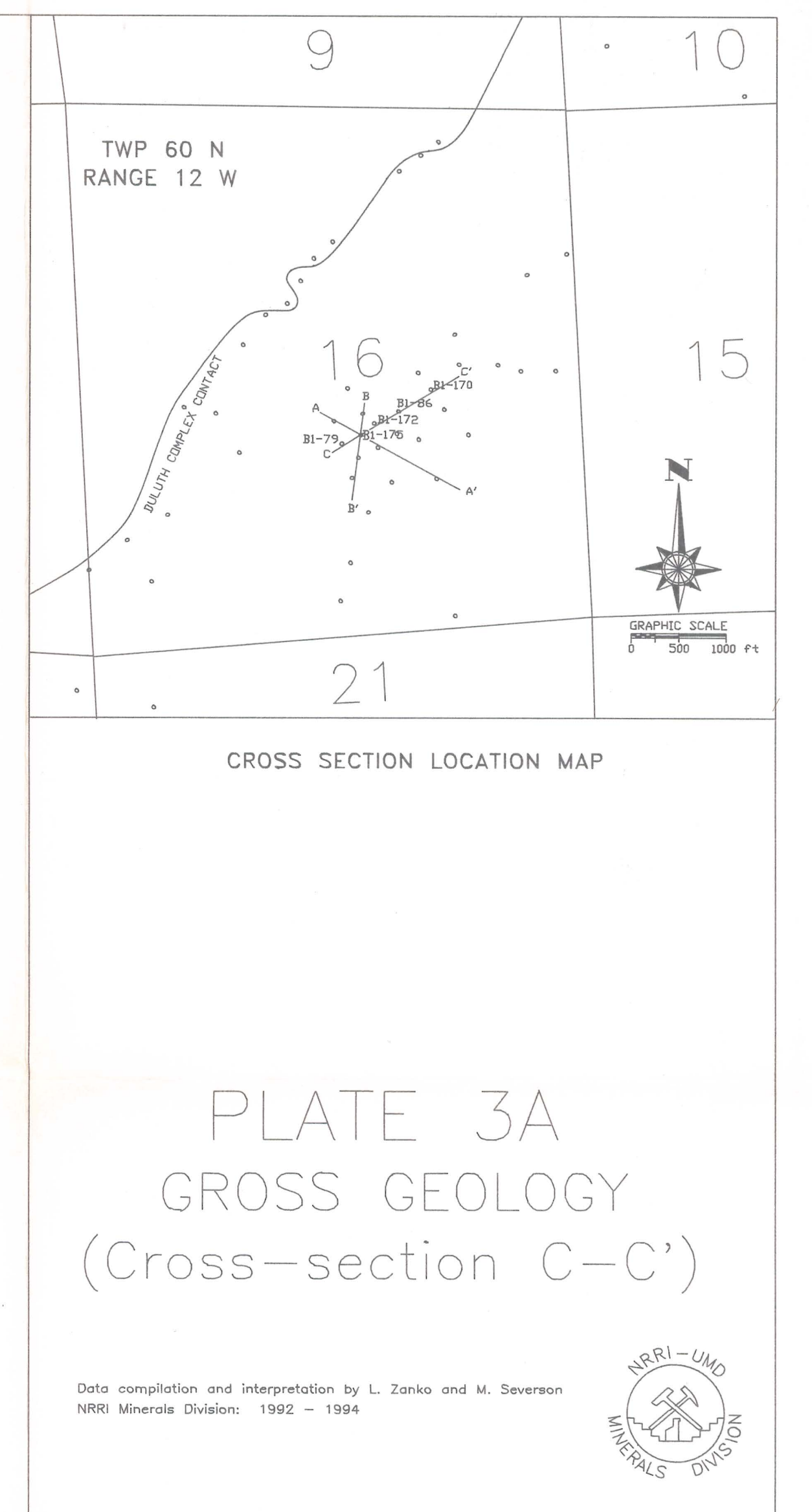
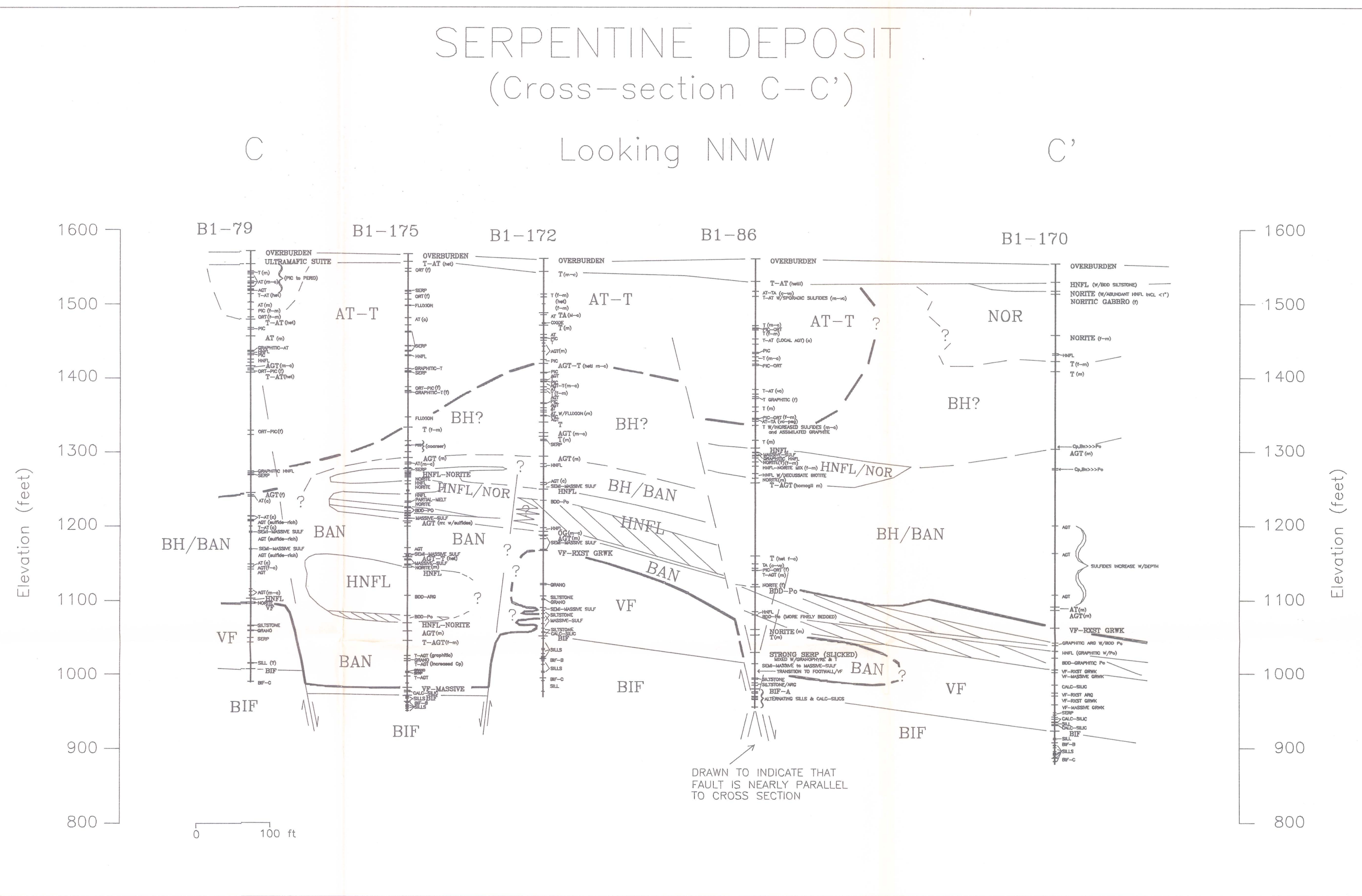
| | |
|-----------------|--|
| AGT | augite troctolite |
| AGT-OG | augite troctolite-olivine gabbro (variable) |
| AGT-PIC | augite troctolite-picrite (variable) |
| AGT-T | augite troctolite-troctolite (variable) |
| ANORITE | augite-norite |
| AT | anorthositic troctolite |
| AT-HYBRID | anorthositic troctolite hybrid |
| AT-PIC | anorthositic troctolite w/ picrite |
| AT-T | anorthositic troctolite-troctolite (variable) |
| AT-TA | anorthositic troctolite-troctolite anorthosite (variable) |
| BAN | basal augite-norite |
| BASALT | basalt |
| BASALT-AGT | mixed basalt-augite troctolite |
| BASALT-HNFL | mixed basalt-hornfels |
| BDD-ARG | bedded argillite |
| BDD-PO | bedded pyrrhotite |
| BI | basal heterogeneous |
| BIF | Blwabik iron-formation |
| BIF-A | Blwabik iron-formation - submember A |
| BIF-B | Blwabik iron-formation - submember B |
| BIF-C | Blwabik iron-formation - submember C |
| BIF-D | Blwabik iron-formation - submember D |
| CALC-SILIC | calc silicite |
| CHERT | chert |
| FELD-PERID | feldspathic peridotite |
| FLUXION | a.k.a. primary igneous foliation |
| GRANO | granophyre |
| GRAPHITIC | graphite-bearing |
| GRWK | graywacke; associated with Virginia Formation |
| HNFL | hornfels |
| HNFL-MASS-SULF | hornfels mixed w/ massive sulfides |
| HNFL-NORITE | hornfels-norite |
| HYBRID | hybrid rock type (not specific) |
| MASS-SULF | massive sulfides |
| MELA-GAB | mela-gabbro |
| MIXED-AT-AGT-T | mixed anorthositic troctolite-augite troctolite and troctolite |
| NOR | norite |
| NORFELS | recrystallized basalt? |
| NOR-MELA-GAB | noritic mela-gabbro |
| OG | olivine gabbro |
| ORT | olivine rich troctolite |
| ORT-PIC | mixed olivine rich troctolite and picrite |
| OUI | oxide ultramafic intrusive |
| OVERBURDEN | overburden/glacial material |
| PEG | pegmatite |
| PERID | peridotite |
| PERID-DUN | peridotite-dunite (variable) |
| PIC | picrite (or mela troctolite) |
| PIC-ORT | mixed picrite-olivine rich troctolite |
| PIC-OUI | mixed picrite and OUI |
| QUARTZITE | quartzite |
| SEMI-MASS | semi-massive sulfides |
| SERP | serpentinization |
| SERP-FELD-PERID | serpentinized feldspathic peridotite |
| SERP-PIC | serpentinized picrite |
| SILL | siltstone |
| SILTSTONE | siltstone |
| SILICKED | siltstone |
| T | troctolite |
| TA | troctolite anorthosite |
| T-AGT | troctolite-augite troctolite (variable) |
| T-AT | troctolite-anorthositic troctolite (variable) |
| T-HNFL | mixed troctolite and hornfels |
| T-PIC-OUI | mixed troctolite-picrite-OUI |
| ULTRAMAFIC | ultramafic |
| VF | Virginia Formation |
| VF-MASSIVE | Virginia Formation-massive |
| VF-RXST | Virginia Formation-recrystallized |

TEXTURE AND COMPOSITION KEY

| | |
|-------|---------------------|
| f | fine grained |
| m | medium grained |
| c | coarse grained |
| vc | very coarse grained |
| peg | pegmatitic |
| homog | homogeneous |
| het | heterogeneous |

MINERAL ABBREVIATIONS

| | |
|----|--------------|
| Cp | Chalcopyrite |
| Bn | Bornite |
| Po | Pyrrhotite |



TEXT LEGEND

UNIT DESIGNATION & DESCRIPTION

| | |
|-----------------|--|
| AGT | augite troctolite |
| AGT-OG | augite troctolite-olivine gabbro (variable) |
| AGT-PIC | augite troctolite-picrite (variable) |
| AGT-T | augite troctolite-troctolite (variable) |
| ANORITE | augite-norite |
| AT | anorthositic troctolite |
| AT-HYBRID | anorthositic troctolite hybrid |
| AT-PIC | anorthositic troctolite w/ picrite |
| AT-T | anorthositic troctolite-troctolite (variable) |
| AT-TA | anorthositic troctolite-troctolite anorthosite (variable) |
| BAN | basal augite-norite |
| BASALT | basalt |
| BASALT-AGT | mixed basalt-augite troctolite |
| BASALT-HNFL | mixed basalt-hornfels |
| BDD-ARG | bedded argillite |
| BDD-PO | bedded pyrrhotite |
| BI | basal heterogeneous |
| BIF | Blwabik iron-formation |
| BIF-A | Blwabik iron-formation - submember A |
| BIF-B | Blwabik iron-formation - submember B |
| BIF-C | Blwabik iron-formation - submember C |
| BIF-D | Blwabik iron-formation - submember D |
| CALC-SILIC | calc silicite |
| CHERT | chert |
| FELD-PERID | feldspathic peridotite |
| FLUXION | a.k.a. primary igneous foliation |
| GRANO | granophyre |
| GRAPHITIC | graphite-bearing |
| GRWK | graywacke; associated with Virginia Formation |
| HNFL | hornfels |
| HNFL-MASS-SULF | hornfels mixed w/ massive sulfides |
| HNFL-NORITE | hornfels-norite |
| HYBRID | hybrid rock type (not specific) |
| MASS-SULF | massive sulfides |
| MELA-GAB | mela-gabbro |
| MIXED-AT-AGT-T | mixed anorthositic troctolite-augite troctolite and troctolite |
| NOR | norite |
| NORFELS | recrystallized basalt? |
| NOR-MELA-GAB | noritic mela-gabbro |
| OG | olivine gabbro |
| ORT | olivine rich troctolite |
| ORT-PIC | mixed olivine rich troctolite and picrite |
| OUI | oxide ultramafic intrusive |
| OVERBURDEN | overburden/glacial material |
| PEG | pegmatite |
| PERID | peridotite |
| PERID-DUN | peridotite-dunite (variable) |
| PIC | picrite (or mela troctolite) |
| PIC-ORT | mixed picrite-olivine rich troctolite |
| PIC-OUI | mixed picrite and OUI |
| QUARTZITE | quartzite |
| SEMI-MASS | semi-massive sulfides |
| SERP | serpentinization |
| SERP-FELD-PERID | serpentinized feldspathic peridotite |
| SERP-PIC | serpentinized picrite |
| SILL | siltstone |
| SILTSTONE | siltstone |
| SILICKED | siltstone |
| T | troctolite |
| TA | troctolite anorthosite |
| T-AGT | troctolite-augite troctolite (variable) |
| T-AT | troctolite-anorthositic troctolite (variable) |
| T-HNFL | mixed troctolite and hornfels |
| T-PIC-OUI | mixed troctolite-picrite-OUI |
| ULTRAMAFIC | ultramafic |
| VF | Virginia Formation |
| VF-MASSIVE | Virginia Formation-massive |
| VF-RXST | Virginia Formation-recrystallized |

TEXTURE AND COMPOSITION KEY

| | |
|-------|---------------------|
| f | fine grained |
| m | medium grained |
| c | coarse grained |
| vc | very coarse grained |
| peg | pegmatitic |
| homog | homogeneous |
| het | heterogeneous |

MINERAL ABBREVIATIONS

| | |
|----|--------------|
| Cp | Chalcopyrite |
| Bn | Bornite |
| Po | Pyrrhotite |

