



The Minnesota Daily

MINNESOTA HISTORICAL SOCIETY

WEATHER
If everything looks fuzzy today, it isn't because of too much to do, there is just too much of that white fluffy stuff obstructing your vision. Hi 20, Lo 12.

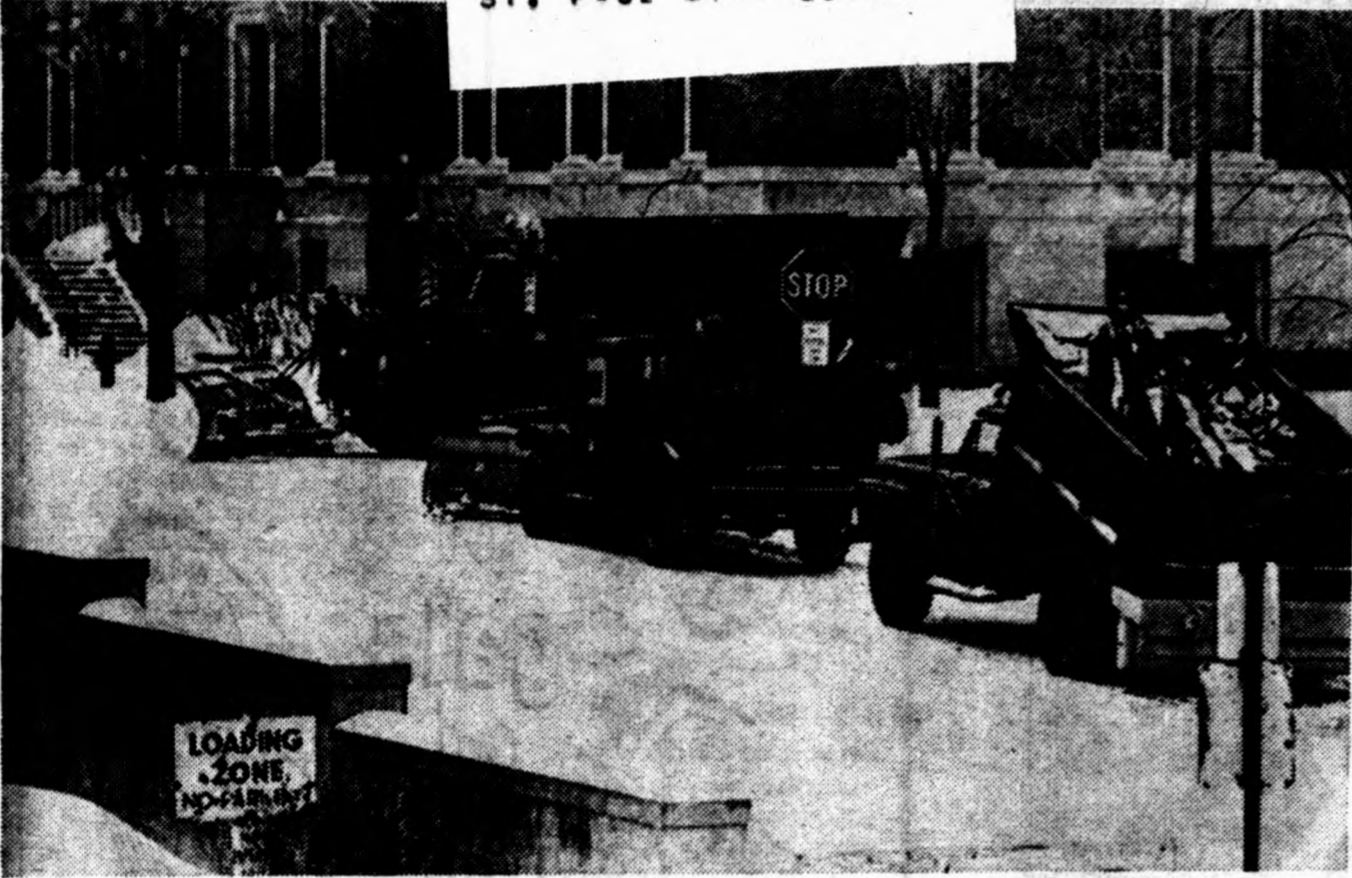
Volume 66

STATE HISTORICAL SOC.
SC
ST. PAUL MINN 55101

Largest College Circulation

St. Paul, Minn., Wednesday, March 3, 1965

Number 109



Plows Primed for Attack

Campus snow crews move in quickly to attack the drifts which could prove hazardous to University students. Snow must be hauled from campus streets to the Mississippi River Flats where it melts and flows into the river. The crews also have applied 700 tons of sand to University streets and sidewalks this winter.

Late-Comers Frustrated By Fast-Filling Classes

By MICKEY KLESSIG

A rash of red dots on the big CLA class reservations board designated 409 classes closed at noon yesterday. Monday, class reservations swung into their second half, and harried late-comers lined up before the big board in tense concentration. "This is neither the time nor the place to start filling out a schedule," remarked one frustrated bystander.

Six students with furrowed brows scanned the board where 40 black dots hopefully marked classes still to be opened.

A SIGN in the Johnston 205 office warns against smoking, saying, "Excessive amounts of paper are a fire hazard." This is a grand understatement in perhaps the busiest room on campus from 8 a.m. to 5 p.m.

An example of disappearing classroom space is English 3B with

80 sections, 42 of which are closed.

Students anticipating spring exercise have filled scores of physical education classes. Men's judo, karate, life saving, beginning tennis and water safety instruction courses are closed, and golf and weight training are filling fast. Coeds interested in self defense have filled rifle marksmanship, beginning fencing and archery. There are no places left in women's beginning swimming, posture and exercise, golf, tennis, ballroom dance or social games and mixer courses.

Red dots glare next to every section of Anthropology 2A. French 55 is closed as are Art 11, 40, 45, 120, 121 and 122. More closings include Economics 20, English 162, German 78, and Theatre Arts 22.

BERNICE HEIDEMAN, principal clerk, reports that class reservations are "going very smoothly" and tapering off. She and a staff

of ten have twice steered 1,400 students through lines in a single day in 205 Johnston Hall.

"About two years back someone tried to duplicate early date slips," she recalled. Some have tried using ink eradicator and forging an early date, but the office now rejects all mutilated slips.

She named Psychology 1 and 2 as the largest fall and winter classes. They enroll about 2,000 for lectures in Northrop Auditorium. She could not predict what the largest spring class would be.

Reservation for those with date slips continues until 5 p.m. March 9, and open reservations begin March 10. Cancel-adds begin March 11. When spring quarter classes begin March 29, the office will be open from 7 to 8:30 p.m. for adjustments in Monday-Wednesday-Friday freshman English courses.

CLA Board Project . . .

Classes, Profs Scrutinized

Courses and instructors will come under close scrutiny by students participating in several upcoming CLA Intermediary Board projects.

At last night's meeting the Board appointed a committee to examine a course evaluation project. The purpose of the committee will not be to evaluate the courses but to determine a feasible method of putting an evaluation project to good use, according to Bob Bue-low, CLA senior and vice president of the board. The committee will examine "the problems involved in putting something like this together," he said.

ANOTHER PROJECT, which will start during the second week

of spring quarter, involves a series of meetings among selected students majoring in an area specified by the Board. These students will also meet with instructors who teach in these areas. The purpose of these meetings will be to evaluate the prerequisites for the course, the courses offered, the type of instruction given and the relevance of certain courses to a major sequence.

Even the classrooms will come under the examination of a Board committee which has been assigned to do a survey of campus classroom conditions.

A list of positive and negative questions concerning facilities in the classrooms will be sent to 200 students selected at random. Each

Snow Not Allowed to Melt—Plow Crews Work All Night

By MICHAEL LARSON

The snow, sleet and slush that have plagued the Twin Cities this week is not allowed to melt in peace on campus.

The University snow removal team, in fighting accumulations of drifting snow, often works through the night during and after a heavy snow storm. J. L. Tauer, who heads the Minneapolis Campus division, commented yesterday on the team's task:

"WHEN IT CONTINUES snowing like it has the past few days, we begin a 24-hour operation. Sweepers start clearing sidewalks about 2 a.m. and we continue working throughout the night. We don't try to haul snow away before 11 p.m. because the traffic is too thick.

"Students are the biggest problem during the day. The traffic between classes forces our men to slow up the work."

Tauer's organization employs 16 men to clear sidewalks and steps. In addition, four plows and four sidewalk sweepers help clear streets and sidewalks. The sweepers often travel "over 50 miles in one night."

"WE CONDUCT a difficult operation," Si Peterson, foreman of the Minneapolis Campus crew, said. "We have a unique problem here on the Minneapolis Campus. There are no boulevards so we must haul all the snow from the streets.

"City snow removal units in Minneapolis and St. Paul face the same problem with their downtown

areas, while suburbs with lawns between sidewalks and curbs can dump the snow along the roadside and let it melt."

Five trucks—three 10-yard trucks and two 5-yard trucks—haul the snow from campus streets to the dumping area on the Mississippi River Flats. There it melts and flows into the river.

"WE HAVE FEW problems if the river stays open," Peterson commented, "but if it freezes over and we have a large snow storm, we have trouble."

Red Hornby controls the trucks, plows and sweepers. Already this winter his men have applied 700 tons of sand to University streets and sidewalks.

"We can't use salt on concrete since it causes corrosion," Tauer said. "This makes ice and sleet especially rough to clear. Sand doesn't seem to help at all. The (Continued from Page 2)

Last Day to Buy Dinner Tickets

Today is the last day for residents of the St. Paul Campus dormitories to purchase tickets for the Inter-Dorm Semi-Formal Dinner Dance to be held at 7 p.m. Saturday at the Twins Motor Hotel at 1975 University Ave., St. Paul.

Tickets will be sold from 5 p.m. to 6:30 p.m. in the Dining Center at \$5 a couple.

Committee to Design Higher Education Bill

A sub-committee to design a bill coordinating higher education in Minnesota will be appointed today by Rep. Robert Mahowald (C., St. Cloud). He wants a bill "that will make everyone happy."

Seven bills designed to coordinate the development of higher education have been introduced so far this session in the Legislature. Mahowald, chairman of the House State and Junior Colleges Com-

mittee, has introduced a bill that would establish a state department of education. A commissioner of education would be appointed by the Governor under Mahowald's bill.

"IT IS MY HOPE that the sub-committee I will appoint will produce a bill that will be effective. We are going to be spending more and more on higher education and if we don't spend it well we're not going to have anything," Mahowald said yesterday in an interview at the Capitol.

University officials have not given active support to any of the bills introduced; but have said that they favor something along the lines of a voluntary liaison committee.

A commissioner of education would not be as effective in coordinating higher education as university and college administrators who are closer to the scene according to Stanley Wenberg, vice-president for educational relationships and development.

"IT'S DIFFICULT to examine ourselves objectively and to analyze our own operation," explained Mahowald who maintains that a commissioner not involved in college administration would be more effective than a liaison committee.

Mahowald would not comment on just what sort of bill he thinks the sub-committee will produce.

Conservatives Offer Regent-Legislator Bill

A bill to create a 13th University Regent—who would have to be a State legislator—was introduced in the State House of Representatives Monday.

The Board of Regents currently has 12 members. An amendment to the State Constitution would have to be approved by the voters in order to create this position. The 12 member Board was first provided for in the Territorial Laws of 1851 and incorporated in the Constitution.

The proposal was introduced by (Continued on Page 11)

123 Undergraduates Get Snow . . . Straight A's Fall Qtr.

Forty-four Upper Division and 79 Lower Division students who carried 12 or more credits and had no incompletes earned a 4.0, all A's, during fall quarter.

The following are students who earned a 4.0:

UPPER DIVISION

James S. Bendel; Steven G. Blons; Richard S. Burns; Sharon L. Chodos; Paul H. Crane; David P. Doreau; Velma H. Dyck; Richard R. Erickson; Dennis H. Finden; Margaret A. Gandrud; Roger L. Gehard; Kenneth R. Gehner; Richard L. Good; Robert A. Heiberg; Susan E. Hill; Gregory R. Howard; Helen L. Hoxmeier; James J. Huble; Christine E. Isenman; Donna M. Johnson; James E. Johnson; Marna L. Johnson; William R. Kere; Gerald W. Lange; Franklin H. Martin; James D. Miller; Raymond L. Murray; Elaine M. Neils; Nancy L. Newman; Janice M. Olsen; Virginia M. Pedersen; Michael T. Rehmman; Eleanor M. Saari; Sue A. Schmidt; John N. Schoen; Peter C. Sederberg; Carol R. Smith; Lee Sonsteng; Karen L. Tattling; Barbara W. Tigley; William O. Twet; John A. Wangness; Hans O. Weber; Sara L. Zeese.

LOWER DIVISION

Roberta A. Ames; Linda L. Amley; Kathleen E. Bachman; Richard G. Ballentine; Richard L. Beck; Beverly J. Bie; Jeffrey M. Blustein; Robert L. Bunker; Joseph W. Burnett; Darlene J. Carrigan; Thomas M. Co-griff; James A. Davies; Mark A. Donicht; Jane W. Elkinton; Joan A. Emerson; Sara R. Frisch; Myra S. Garber; Michael J. Gardner; Jeanne M. Gates; Dale E. Hammerschmidt; Kathleen L. Hartje; Eric J. Heller; Barbara M. Johnson; Linda M. Johnson; Jerilynn H. Jordan; Elaine M. Jorgenson; Madelyn F. Kajer; Stephen E. Kaufman; Douglas A. Keller; Cheryl A. Kern; Joseph J. Klugman; Anne Knickerbocker; Judith R. Krantz; Jean K. Lawrence; Judith A. Levitt; Sanford D. MacDonald; Carolyn A. Malm; Sharon L. Marrinson; Mark T. Moberg; Patricia Moldenhauer; Jeffrey W. Nelson; Nicholas J. Neubauer; Bonnie Jo Newman; Claire L. Olsen; Gary M. Olson.

Barbara A. Patrek; Dorothy K. Pederson; Naomi M. Quast; Gail P. Raamussen; Martha M. Rice; Nancy C. Richardson; Diane M. Rollins; Irene E. Rutchick; Michale J. Ryan; Kathleen A. Schneider; Susan M. Schoengart; Richard H. Schumann; Karl H. Schwarzkopf; Patricia E. Seuly; Teresa A. Shazape; Marsha J. Siegel; James C. Smith; Merrily A. Smith; Kenneth Sorenson; Janice W. Stauby; Sarah A. Stevenson; Diane M. Storm; Thomas L. Stuart; Susan E. Taylor; Steven J. Thorson; Joan C. Tonn; Charles L. Turchick; Nadine J. Turner; John O. Viesselman; Judith A. Walters; Susan J. Wandseher; John B. Warren; Alexander Wilkinson; Julie H. Williams.

Snow . . .

(Continued from Page 1)

snow removal project during this last snow storm was mild in comparison to last week's sleet storm.

"THE DEPARTMENT allows us to use a limited amount of calcium chloride on the streets, but no salt. We also use a de-icer."

Tauer said the men clear not only Campus streets, sidewalks and steps but they also clear out 47 parking lots.

"Sometimes we clear University and Washington Aves. within the campus. Minneapolis is supposed to clear them, but it is often much

handier for us to reach them before the city."

Tauer said the street cleaning function was started in 1922. "We have about the same number of men now that we had then. There is more work now, but machines save on wages. The men working for us are very skillful. They need to be to operate all our new machinery."

"A NEW MACHINE seems to cost quite a lot, but savings on wages pays for the machine within a year. We buy new machinery with funds received from the State Legislature," Tauer continued. "They appropriate so much for

our yearly operation. The Legislature disregards the severity of the winter so we get the same amount each year.

"If this winter remains as stormy as it has been, we may all have to stop work," Tauer laughed. "But I suppose that's just part of the job," he added.

"We realize it's an intricate operation, but it is satisfying and for the most part, snow makes the day more interesting."

**PATRONIZE YOUR
ADVERTISERS**

AVALON THEATRE
FINE ARTS
LAME ST. & BLOOMINGTON
PA 4-1111

CONTINUOUS FROM 2:00 P.M.
ADULTS ONLY

THE AQUA SEX

PLUS:
THE LAUGHING GASSER OF THE YEAR!
...A WILD AND JOYOUS COMEDY
THAT WILL MAKE YOUR DENTURES CLICK!

DENTIST IN THE CHAIR

special

Fifteen years ago, our Company pioneered the idea of an internship program for college students interested in life insurance careers. Time has proved its worth.

Our campus agents are trained while they're still at school, given a chance to make a proper career decision before graduation. 37% of those participating in this program in the last 10 years are currently enjoying successful careers with the Company in sales, supervisory, and management spots. 22% of the Company's 50 top agents began their insurance careers while college students.

We think our campus internship program is pretty special—so do others. We'd be glad to tell you more about it.

MARK M. MOORE, JR., CLU
1611 Park Avenue
Minneapolis, Minnesota
Phone FE 9-8127

**PROVIDENT
MUTUAL LIFE**
INSURANCE COMPANY OF PHILADELPHIA

YOUNG-QUINLAN ROTHSCHILD

Claybrooke Shop



sero OF NEW HAVEN

Spring calls for dress shirts with color...blue, camel and olive tones in tattersal checks and well-spaced stripes...tailored along traditional lines with tapered body, button-down collar, short sleeves. Cotton oxford cloth or broadcloth; 6.50 and 6.95
Second Floor 901 Nicollet

BIG BUYS



BRAZIER

Char-broiled

BURGERS

TENDER, TASTY, FLAVORFULL BEEF ON A TASTY, TOASTED SESAME SEED BUN!

EVERY SUNDAY NITE
IS CAMPUS NITE
5 Regular 35c
Burgers for

AT YOUR
FRIENDLY
BRAZIER



EAST HENNEPIN and JOHNSON STREET N.E.
MINNEAPOLIS, MINNESOTA



we're just

A MINUTE AWAY . . .

Use This COUPON to

**GET A FREE HOT DOG
WHEN YOU PURCHASE A REGULAR
MALT OR SHAKE**

Mar. 5, 6 & 7

GOOD ONLY AT YOUR FRIENDLY
DAIRY QUEEN BRAZIER

EAST HENNEPIN and JOHNSON STREET N.E.
MINNEAPOLIS, MINNESOTA

Insurance Policy Okayed For Students by MSA

By JUDIE MARTZ

A life insurance program that will provide coverage of student risks at a low cost has been endorsed by the Minnesota Student Assn. (MSA).

The insurance, to be offered to all University students between the ages of 18 and 33, will cover one for a limited time against death, according to Jerry McKay, chairman of the Student Services Commission.

IN A RECENT interview, McKay pointed out that the program is a yearly, renewable, term life insurance plan which guarantees payment of \$10,000 to the beneficiary upon death of the insured. The insurance program costs \$20 a year, offered by the American Health and Life Insurance Company of Baltimore, Md.

Sponsoring the program is the U.S. National Student Assn. (USNSA), a national organization for student governments.

"We feel this type of insurance will best benefit students who have great financial responsibilities and cannot afford a permanent form of insurance," McKay said. "It will also be useful to students who take dangerous summer jobs and

want unrestricted temporary insurance."

McKAY SAID the plan was first made available to member schools at the USNSA Congress held here last summer. The plan was considered by the MSA and referred to its Student Services Commission for further study. Final selection was based on findings and recom-

mendations of local attorneys, accountants and actuaries.

"Although it is definitely a good project," he said, "we do not feel that every student needs this type of life insurance. While the insurance program may be fine for many people, it may not meet the needs of others. Thus, we did not exclusively endorse it."

A Stewardess Career is a Challenge!

Executives, scientists, actors, athletes are but a few of the people who will be your guests aboard American Airlines Astrojets.

Each day is something new. There's responsibility and hard work mixed with the excitement of going places and doing things. You'll fly to cities like New York, San Francisco, Washington, D.C., Los Angeles, Dallas, Chicago, Toronto and Mexico City, to name a few.

To learn more about this challenging career, send coupon today.



AMERICAN AIRLINES
AMERICA'S LEADING AIRLINE

Manager of Stewardess Recruitment
American Airlines, Inc., Dallas Love Field, Dallas, Texas 75235.

I meet all qualifications and am interested in an interview.

Single
 Age 20-29
 Height 5'2"-5'9"
 Weight up to 140, in proportion to height

Normal vision without glasses (contact lenses may be considered)

Name _____
Address _____
City _____ State _____

I do not meet all qualifications now but would like additional information.

"An Equal Opportunity Employer"

tising by National Advertising Service, 15 East 50th Street, New York. Printed at Commercial Press, 418 Third Street South, FE, 6-6644.

Subscription price \$6.00 a year, \$2.00 a quarter. Single copies 5 cents.

Second class postage paid at Minneapolis. EDEBOE
BUS. MANAGER Geoffrey Coffman
Advertising Manager Richard Cunnell
Associate Editor Denis Wootley
Managing Editor Blair Chamberly
City Editor Dan Winose
Asst. City Editor Joyce Schubert
News Editor Don Smar
Copy Editor Gladys Johnson

NIGHT STAFF

Night Editor Gladys Johnson
Asst. Night Editor Betty McMillan
Asst. Night Editor Kettle Schmidt
Night Sports Editor Bob Abbott

RIALTO THEATRE
Chicago & Lake TA. 4-5024

*These are words that mean big trouble in **The Cool World**

HOOKER! JUNK! RUMBLE!

Features 7:25 & 9:30



Would you like to work in a European resort this summer?

PAYING JOBS IN EUROPE

Grand Duchy of Luxembourg—Thousands of jobs in Europe, including resort hotel, office, factory, sales, farm, child care and ship-board work are available through the American Student Information Service. Wages can reach \$400 a month, and ASIS is giving travel grants up to \$390 to the first 5000 applicants. Job and travel grant applications and full details are available in a 36-page illustrated booklet which students may obtain by sending \$2 (for the booklet and airmail postage) to Dept. M, ASIS, 22 Ave. de la Liberte, Luxembourg City, Grand Duchy of Luxembourg.



(Enlarged to show detail)

Delicately beautiful . . .

A diamond set of unusual beauty and grace, the two rings designed to fit together as one. .22 ct. marquise diamond solitaire, 176.00; wedding ring, 77.00. Both of 14K white gold. Tax included; no down payment.



J.B. Hudson
JEWELER

Minneapolis • St. Paul • Southdale

NOTICE TO ALL STUDENTS!

The Minnesota Student Association

has elected to make available

low cost life insurance plan

sponsored by the United States National Student Association of which the Minnesota Student Association is a member.

This service is available to graduate and undergraduate students on a voluntary basis. Neither the University or the Minnesota Student Association are involved in the sale of life insurance but these students or their families, who have need for coverage, are invited to explore the plan in detail.

A \$10,000 policy, without restrictions of any kind, is underwritten by the American Health & Life Insurance Company of Baltimore, Maryland for as little as \$20 a year.

Descriptive material is available at the Minnesota Student Association's office in Coffman Memorial. It is suggested that those interested pick up the offering material as soon as possible since the enrollment period ends March 31, 1965.

JAMES W. RUSTAD
President
Minnesota Student Association

Views expressed on this page in the Daily's unsigned editorials represent those of the paper. Signed columns, reviews and letters to the editor represent the personal views of the writers. In neither case is the opinion necessarily that of the University administrators, faculty, staff or other students, and titles and positions are listed for identification only.

The Die is Cast

We don't even need a reason any more.

Yesterday some 160 American planes attacked North Vietnam, apparently not aiming entirely at military targets. Ambassador-General Maxwell Taylor admitted there was no relationship between these attacks and provocation of equal intensity. We can only reach sinister conclusions.

American foreign policy in Vietnam seems to have gone over the brink. Washington seems intent upon eventually involving Hanoi. Perhaps the only way to defeat that regime is to bomb it.

This still won't affect much in South Vietnam, however. Hanoi could disappear tomorrow and the revolution in the South would still go on. The peasants there are united, for a change, in wanting a nation free from domination by anyone — the United States or China.

If President Johnson would apply the zeal for freedom he displays toward the American South in the direction of Southeast Asia, perhaps we would practice what we preach with a bit more consistency.

A New University Theatre

Everybody else says it, so we will, too.

We have a pet item in the University budget, at least from the aesthetic viewpoint.

For a number of years now it has been obvious that the Theatre Department needs a new building. Crammed into Scott Hall with the Department of Music, and forced to share its auditorium with classes, and restricted by the crudest variety of proscenium stage, it must be a frustrated department indeed.

Sharing an auditorium with classes reduces the amount of time available for backstage work such as set construction, and rehearsals and other work with individual cast members. Also—and this has aesthetic significance for theatre people — it is simply a misuse of the facilities.

But perhaps the greatest drawback is the proscenium stage—"theatre in the square," we like to call it—which exercises a severe restraint on the variety of production possible there. Proscenium stages only came into style in the 19th Century, scarcely the high point in the history of drama. Those of us who have seen the attempts to do Athenian tragedy or Shakespeare or some of the most modern drama are aware of the restrictions the director must face and sense the frustration he must feel with these afflictive limitations.

We hope the Legislature sympathizes.

'Your Name Has Been Selected'

The Republicans seem to be having an awful time finding a candidate to oppose Mayor Arthur Naftalin. While they say that a "large number" of candidates have expressed interest, only one name has appeared in the papers.

Naftalin is seeking his third term, after four frustrating years under a weak-mayor system. In that time he has been instrumental in transferring General Hospital to Hennepin County, improving police service, assisting urban renewal and lower loop redevelopment, improving the zoning laws, city planning, and the first steps toward metropolitan government. Most important of all, he has helped to educate the voters of Minneapolis to exactly what is wrong with their government and why the City Charter needs a major overhaul.

We sympathize with the Republicans. We'd hate to have to find anyone to run against a record like that, too.

The Slattengren-Wingard Race

We wonder what the people will decide in the case of Linn Slattengren.

Slattengren won the election for State Representative from the 30th District by 339 votes over the incumbent. While John Wingard's lawsuit struck us initially as merely a device to overturn a defeat, it now appears there was substance to it.

The bipartisan support for the House elections committee's report refusing to seat Slattengren is another indication of the validity of the charges. Slattengren's "technical errors" on Wingard's voting record on health care legislation, to name only one, strike us now as justifying the House's action.

We hope the people take steps of their own.

Private Power Companies Overcharge, Mislead Public

By Lee Warren Smith

(This is the first of two columns.)

Privately owned power companies which commonly refer to themselves as "investor-owned utilities," are guilty of grossly overcharging and misleading the public, according to Sen. Lee Metcalf (D., Mont.) who has researched the problem extensively. Metcalf has spoken many times on the Senate floor about these companies he calls the "IOU's," and he recently published a pamphlet entitled "20 Questions About Your Loaded Light Bill."

Seventy-five per cent of the electricity in the U.S. is supplied by 220 IOU's which enjoy legal monopoly rights almost without exception. In most cases these companies are regulated by state commissions. Ideally, these commissions establish rates which allow the IOU's a six per cent return on investment. However, lax regulation has allowed some companies' returns to climb as high as nine per cent.

Other more insidious means of overcharging are employed by IOU's, according to Metcalf. He cites the failure of power companies to refund tax overcharges as an example. Since power companies pay no taxes, but charge the consumer to pay for them and count them as expenses, too much is often charged, and when this happens, the companies keep the money. Metcalf points out that numerous and generous tax reductions have only rarely been followed by lowered rates. (E.g., IOU's have received over a billion dollars in tax relief through accelerated amortization since 1954, and over half a billion through liberalized depreciation. They annually save

\$50 million in investment tax credits, and will save \$100 million annually under the tax cut.)

If other charges exceed expenses because of incorrect estimation, the money thus collected remains with the company under the "water over the dam" principle, a situation again accenting the laxity with which power commissions police the IOU's.

Metcalf explains how both the consumer and stockholder suffer when company officials benefit from restricted stock option plans. The stockholders lose when stock options are substituted for higher salaries or bonuses because options are not deductible, whereas salary increases and bonuses are. Furthermore, it is impossible for even responsible regulatory commissions to take account of option profits in setting rates because the potential value of option stock cannot be estimated. The profits made by officials on these options are tremendous (e.g., the president of the Montana Power Company made \$370,000 in one transaction; increased value has boosted this figure now to \$800,000), and the equity of ordinary stockholders is diluted by the process.

The answer to the problem of protecting consumers against these abuses, proposed by Metcalf, is twofold: strengthen regulatory commissions by providing them with more qualified staff, and give the IOU's more competition in the form of consumer-owned electric companies. (Comparison shows that rates charged by IOU's neighboring municipal power systems and rural electric co-operatives are more reasonable than those charged by IOU's with exclusive monopolies over a broad area.)

(Lee Warren Smith is Assistant Associate Editor of the Daily and vice president of the Young Democrats.)

Full-Scale War in S.E. Asia Not Dodged by Ignoring China

By David C. Balcom

(This is the second of two articles.)

Three factors seem to be developing which will shape events in Asia for many years.

In the first place, the ideological gulf between China and the Soviet Union is growing. Indications are very strong that the split is such that it cannot be healed in the near future. The Soviet Union has reach-

ed the peak of its expansion. The prospects of further territorial gains are slim, simply because expansion into adjoining nations would not be advantageous, nor would expansion into geographically remote nations be worth the risk of war. With the tendency toward replacing state socialism with a form of incentive system, the Soviet Union may very well prefer to concentrate on raising the standard of living within its own borders.

This does not mean that the Soviet Union is no longer a threat to peace or world order, but there are very strong indications that the old revolutionary spirit is waning. It may well be that the Soviet Union will soon have a very large stake in the preservation of the global status quo.

Communist China, on the other hand, represents the old Bolshevik wing of the Party. China has little or no stake in the preservation of the present world order. Territorial expansion is an attractive means of diverting attention from internal problems, extending its power, and realizing an ancient destiny. Southeast Asia is the natural target for such expansionistic aims.

In the second place, the Soviet Union has very little to gain from the policy which China is now pursuing. Moscow would have no interest in involving itself in a war in Southeast Asia. Any Communist victories in Southeast Asia would be enjoyed by China, not the Soviet Union. Moscow's failure to support China during the border clash with India is indicative of the divergence of interests of the two powers in Asia. As far as military practicalities are concerned, the only threat in Southeast Asia is Communist China.

In the third place, a firm policy of containment in Southeast Asia could forestall further immediate drives by China. The mistakes of our policy in dealing with the Soviet Union during its expansionistic period are now evident. When we enjoyed military superiority, we failed to exercise it, and the Soviet brand of communism engulfed much of Europe and Asia. China, although it possesses a large infantry, has virtually no navy and an out-dated air force. Therefore, China is unable to adequately support guerrilla efforts which it cannot supply directly by land. It is obvious that China's military efforts, at least in the near future, (Continued on Page 10)

DFL Congressmen Back HUAC, Abrogate Party Responsibility

From the Campus Democrat

After last week some of us are ready to ask some searching questions about just exactly what it means for a political party to take a stand on an issue.

Last August 1, the DFL State Central Committee almost unanimously passed a resolution calling for abolition of the House Un-American Activities Committee (HUAC). The resolution, a condensed version of the one originally passed by this Club, was referred to it by the State Convention of 1964.

On February 25 the annual appropriation for HUAC was approved by the House. A motion to recommit the motion with instructions to hold public hearings was defeated by 58-332. The appropriation itself, a record \$370,000, was approved by 358-29.

Three of the four Minnesota Democrats voted "yes" on the appropriation.

Only Rep. Donald Fraser voted no. Rep. John A. Blatnik voted for the motion to recommit, but Reps. Alec Olson and Joseph Karth voted against it.

It is enough to make one wonder whether in the last analysis it necessarily means anything for a party to go on record about something. If Congressmen can feel so free to ignore the consensus of the party faithful, what is to happen to party responsibility?

It will be interesting to hear the defense these three Congressmen give for their support for this committee and its roving sideshows and constant violations of basic civil liberties. None of them ventured to speak up during the House debate. One New York Congressman even quoted a statement by Blatnik in 1949 saying he hoped to see the committee's demise. What has happened to him and to the others?

Perhaps in defending their vote they would also care to comment on whether they feel any obligation toward the stated policies of their party. Before persons in the senior DFL venture to criticize the junior DFL, perhaps they should look to their own elected officials.

(The Campus Democrat is the tri-weekly newsletter of the University Young Democrats.)

CAMPUS OPINION

For Clark-Neuberger

To the Editor:

I think your editorial in the March 1 issue opposing the bill to provide humane treatment to experimental animals shows calousness toward the suffering of lower forms of life. I believe protection for experimental animals should be provided by the federal government because if left to individual institutions excesses occur and tactics are used which are beyond what a humane people want to allow.

Opponents state that those who favor the Clark-Neuberger Bill should not express this opinion because they do not understand medical research. Does it take a doctor's degree in medicine to realize that fitting a three foot dog into a two foot cage is not merely a discomfort; when the animal must remain there for a period of time it is pure torture? When dogs are in cages stacked five high and there are no floors on the cages it must be more than distressing for those in the lower cages. How much knowledge of medicine does

it take to imagine that cleaning a cage with a blast from a water hose must be terrifying to an animal in a post-surgical state? But these are far from the worst cases on record. I mention these because some of these conditions exist here in our own state as recently witnessed by a representative from the Society for Animal Protective Legislation.

Support for the Clark-Neuberger Bill does not come from laymen alone. Hearings before the sub-committee considering the bill revealed many doctors and researchers who favor this legislation. They tell of the unnecessary suffering they have witnessed and

their testimony is on the record for interested parties. Some opponents say all medical men who favor this bill are simply off-beat practioners. If this be so then I salute all such off-beat practioners, one of whom is Dr. Albert Schweitzer.

Jerry Anderson
Graduate

On 'The Crown Bride'

To the Editor:

Mr. Berger's critique of University Theatre's fine and daring presentation of Strindberg's *The Crown Bride* was not only indiscrete, but incoherent. What does he mean by a "hodge-podge of symbolism or goeey moralizing?"

I have heard such trite expressions before, but I have no idea of how he applies them to Strindberg's slightly eccentric, but deeply imaginative drama. I do not know what constitutes the apparently sacred term, "Theater," but I enjoyed the incredibly credible jobs done by both Ina Rae Stanton and David Flaten as Kersti and Mats.

There was more than finesse involved in portraying the complex mixture of Barbara Allen and Lady

Macbeth which was Kersti, and the gentle but somewhat Philistine Mats. The grand mythological ending was not intended as an anodyne or soporific, and it was by no stretch of the imagination a "Bible scene." I know of no actions in the Bible which take place in Sweden. I congratulate University Theatre on being below commercialism, for he that lowers himself shall be exalted, and it was in-

(Continued on Page 10)

Would You Like to EARN While You LEARN?

The ACADEMY OF ACCOUNTANCY, through its class scheduling, student placement service, and practical education can make this possible, and practical education can make this possible for you. Why not call or write us and let us explain this unique program to you?



ACADEMY of ACCOUNTANCY
Accounting Education — Our Specialty
800 Northwestern Federal Building
Minneapolis 55403 339-9635

U FILM SOCIETY

First Minneapolis Showing

7:30 p.m. Fri.-Sat.-Sun. — Museum Nat. History

SALVATORE GULLIANO

directed by Francesco Rosi; Italy, 1962;
The story of the famous Sicilian bandit, Gulliano, and the conditions of his death in 1950 constitutes one of the most astonishing enigmas in the history of modern Italy. The film is a stroke-of genius, said the Cahiers du Cinema. Film first shown in U.S. at 1964 N.Y. Film Festival. It has the drama of SEDUCED AND ABANDONED and the style of BANDITS OF ORGOSOLO... PLUS...

THE METROPOLITAN BUILDING

by Edward Goldberg, Arts Senior
The glory and shame of this Mpls. landmark, sacrificed to Washington Avenue parking lots. You can't beat progress in the All-American City.

HAPPY MOTHERS DAY

What the folks in Aberdeen really thought about the Fischer Quints. Made by top U.S. director Richard Leacock, 1964.
ADM. \$1 — ALL THREE FILMS



CAMPUS JEWELERS
1319 Fourth St. S.E. FE 1-5121

Whether you like 'Professional' or 'Student' Beauty Services, at

You'll find both types

ROBINSON BEAUTY SCHOOLS

The choice is yours!

Call now for an appointment:

Robinson Beauty Schools, Inc.

1413 S.E. 4th St. (Dinkytown) 331-5981
3913 S. 27th Ave. (Open Eves) 721-6241

The Center Arts Council
of Walker Art Center
presents

AMERICAN FOLK MUSIC
AT THE GUTHRIE THEATRE



8 P.M. SATURDAY, MARCH 6

ALMEDA RIDDLE

OZARK BALLAD SINGER

MAINER'S MOUNTAINEERS

OLD-TIMEY STRING BAND

KIRK McGEE

MOUNTAIN BANJO PLAYER

8 P.M. SATURDAY, MARCH 20

THE LILLY BROS.

5-PIECE BLUEGRASS BAND

CLARENCE ASHLEY

OLD-TIME SONGS WITH BANJO

8 P.M. SATURDAY, APRIL 3

REV. GARY DAVIS

BLIND STREET SINGER

ELIZABETH COTTON

GUITAR STYLIST AND COMPOSER

JESSE FULLER

ONE-MAN BAND FROM GEORGIA

Tickets at Guthrie Theatre, Dayton's, Field-Schiel, Minnesota Co-op, Jr. SERIES: 7.00, 5.00, 3.00. SINGLES: 2.50, 1.50.

Wednesday, March 3, 1965

Major
in
action!



Minor
in
price!

Olds Jetstar 88 really cuts it, come exam-time. Test it out on action first. This baby can put down 315 horses, eager to go anywhere. Now score it on ride: whip-cream smooth, thanks to four coil springs and other goodies. Now room: stretch yourself in interiors that say Olds is out to win the space race. Now price: Jetstar 88 prices start below 30 models with "low-price" names. Actually, these tests are hardly fair to the other thirty... Olds is in a class by itself!

'65 OLDSMOBILE

Jetstar 88

The Rocket Action Car!

Oldsmobile Division • General Motors Corporation

Program Trains Students . . .

Center Plans Int'l Projects

Developing a university in Chile, supervising an agricultural extension service in Argentina and building a graduate school in economics at the University of the Andes in Columbia are a few of the projects students may participate in through the Center for International Relations and Area Studies.

"Actually the Center is supposed to take the place of a departmental office for courses in the University's international program," Prof. Charles McLaughlin, director of the Center, said in an interview Monday. "The program trains students for jobs in the State Department, the U.S. Information Agency, the foreign service and international offices in various government departments."

McLAUGHLIN SAID some stu-

dents work for international organizations, some go into international business and some go into teaching. Majors are available in the program for bachelors, masters and doctoral degrees, he said. Students may plan majors in East and South Asia, Russia, Western Europe and

Latin America, he said.

Future plans for the Center include a major in overseas development, McLaughlin said. Faculty seminars in the field will begin this year. He foresees more emphasis on international business in area studies.

Harold Deutsch, history professor, is working on a program studying the impact of European integration movements, such as the Common Market, on the rest of the world, according to McLaughlin, who is anticipating an area-study program on Scandinavia.

"THE UNIVERSITY has the largest library in this area outside of Scandinavia," he said. "It is the natural place for such a program, but there doesn't seem to be much student demand for one."

In addition to administering academic programs, the Center brings speakers on international topics to the University, arranges institutes on international topics to the University, arranges institutes on international affairs and works with the student International Relations Club. The Center also runs an international relations library. McLaughlin said it includes books, magazines and newspapers from all over the world.

Evening Students' Open House Set

An open house for students in evening classes and their guests will be held tonight from 7 to 11 p.m. in the West Bank Student Lounge in the Business Administration Tower.

The open house is being co-sponsored by the General Extension Division, the West Bank Highlights committee and the Union Board of Governors. Refreshments will be served.

See Phil Hesli, Jr.

FOR A GOOD USED CAR OR A NEW PONTIAC OR TEMPEST
ARROW PONTIAC CO.
MI 5-8161 331-5467

AUTO INSURANCE

FOR MATURE, SINGLE DRIVERS UNDER 25
MATURITY + PSYCHOLOGICAL TEST = REDUCED RATES

Sample Rates: AGE RATES
21-24 125.00
20 145.00
18-19 169.00

Call to see if you qualify (10/20/5 Liability)

STEINKE AGENCY

2325 Hennepin Ave. FR. 7-1234
AUTO — LIFE — FIRE

RENT A CAR AT ECONO-CAR FOR:

QUARTER BREAK TRANSPORTATION

TO ARIZONA - FLORIDA - CALIFORNIA
MEXICO OR ANYWHERE

Econo-Cars are safe, trouble-free, and will get you there at the Lowest Possible Cost

GET ECONO-CAR'S SPECIAL PACKAGE DEAL

WE'LL TAILOR A PLAN

THAT WILL MEET YOUR NEEDS

EXAMPLE: FORT LAUDERDALE, FLORIDA

4 Door Sedan — includes 4,000 miles of driving, insurance coverage, maintenance — for 10 days from the evening of 18 Mar. to the morning of 29 Mar. only \$219⁰⁰

4 OR 5 CAN GO FOR THE PRICE OF ONE

ECONO-CAR

World's fastest growing car rental system

620 3rd Ave. So. "Heart of the Loop" 333-5542

Good Reading Abounds In Spring Class Schedule

By DOUG ARMSTRONG

Although it might seem as dry as the telephone book, the spring quarter class schedule offers interesting reading to anyone who has the time.

Courses about subjects you never knew existed fill the 100-page booklet. Museology, helminthology and ethnology are just a few.

To begin with, good courses to understand the schedule itself would be Classics 48, Technical Terms of Science, Medicine and Humanities.

BREEZING THROUGH the booklet, you see the University offers a course in driver education, Education 101. It has an apparent course in a different department called Introduction to Weaving 53.

Although the French are often thought to be the epitome of romance in Europe, the German Dept. offers a course entitled the Active Approach.

Also in the section on German there is a course of Lyric Poetry from Goethe to Rilke. The question remains: Why would Goethe write poetry to Rilke?

BOTANISTS ARE proud of their tradition. One female botanist from Minnesota achieved national prestige, and now Botany 115 is devoted to a study of her life. It is called Flora of Minnesota.

In today's space age, computers are beginning to challenge the minds of men and actually achieve personalities. Evidently in an attempt to keep up with the times, the University now offers a course designed to increase knowledge of space-age etiquette: Introduction to Electronic Computers.

The curriculum in naval science, seemingly misplaced from the Medical School, includes two contrasting courses: Naval 53 and 56. The first is entitled Celestial Navigation and the second Modern Basic Strategy and Tactics.

MORTUARY SCIENCE, morbid as it may seem to the average Arts student, offers several immortal courses: Restorative Art, Mortuary Law, Embalming, Business Methods, Psychology of Funeral Service and a seminar, Dynamics of Grief.

Faculty to Display Guitars, Chess Sets at Hobby Show

At the Faculty Hobby Show tomorrow students will have a chance to see how faculty members relieve their tensions.

The Show will start at 11:30 a.m. and end at 8:30 p.m. in the Union main ballroom.

Such extracurricular pastimes as the guitars Asst. Math Prof. Robert C. Sine has made; the chess sets Librarian Henry Scholberg has collected; and the "musical

walking stick" of Physics Prof. George D. Freier, will be exhibited at the Show.

In addition to the displays of hobbies and collections of the faculty, faculty women will present a separate show of crafts.

The show is sponsored by the Artcraft Committee of the Union Board of Governors, and is free to the public.

PARK-LAKE CAR WASH FOR EXPERT WASH & WAX

"A clean car rides better"

HOURS: 8:00 a.m. — 10:00 p.m. weekdays
8:00 a.m. — 6:00 p.m. Saturday
8:30 a.m. — 3:00 p.m. Sunday

637 EAST LAKE STREET

FLORIDA BOUND SPRING BREAK -- LAST CALL MARCH 20-28

JET \$129.95

- ROUND TRIP—NON STOP
- CHARTER FLIGHT—STUDENT, FACULTY & STAFF
- FREE TRIP INSURANCE
- COMPARE PRICES, AND SAVE MONEY

GOPHER FLIGHTS Call Weekdays, 926-1611
Mr. Fisher Evening 929-3170

LOOK



AUTHORIZED VOLKSWAGEN DEALER

QUALITY COMPACTS

100% FINANCING AVAILABLE ON THESE SELECT COMPACT CARS

'64 Chevy II 2-Dr. Standard transmission, 6-cylinder, radio, WSW tires, deluxe interior. Low \$1695
miles. Full price . . .

'64 Corvair Monza Spyder Convertible. 4-speed transmission, radio, WSW tires. Low miles. Full Price . . . 2095

'63 Falcon Futura 4-Door. 170 engine, standard transmission, radio, WSW tires. Full price . . . 1395

'63 Monza Coupe. 4-speed trans., radio, WSW tires, bucket seats. Low miles. Full price . . . 1595

'63 Olds F85 Deluxe 4-Dr. V8 engine, automatic transmission, radio, WSW tires. Like new. Full price . . . 1895

'62 Rambler 660 Classic 4-Door. Overdrive, radio, WSW tires. Like new. Full price . . . 895

'62 Ford Fairlane, V8 engine, automatic, WSW tires. Low miles. Full price . . . 1195

'62 Chevy II 4-Door. Automatic trans., radio, WSW tires, deluxe interior. Full price . . . 1295

'61 Rambler Classic 6-pass. Station Wagon. Radio, WSW tires. Full price . . . 895

'60 Valiant 6-passenger 4-door Station Wagon. Radio, automatic trans. Full price . . . 495

'60 Ford Falcon 4-Door 6-pass. Station Wagon. Standard trans., radio, WSW tires. Full price . . . 695

An Additional 115 Cars to Choose From Including a Large Stock of Fully Guaranteed Used Volkswagens.

SCHMELZ BROS. INC.

494 & PENN SO.
UN 6-6212
ACROSS FROM WARD'S SOUTHTOWN

DAILY AUTO CENTER

Continuing Contact for Grads Provided by U Alumni Assn.

After graduation, what? The Minnesota Alumni Assn.

According to Ed Haislet, executive director, the Association is the one continuing contact the student has with the University after graduation.

All graduates and former students who have worked toward a University degree are entitled to membership, according to Haislet. Membership now is more than 22,000.

"ONE OF OUR BIGGEST and toughest jobs is addresses—keeping track of people," Haislet said. The 14,000 addresses representing 51 graduated classes are kept active by means of a tape-computer.

The Association, a non-profit oriented to increase membership

among new graduates. The first year out of college, membership is free. The second year the fee is \$1, and the rate increases \$1 for every additional year out of college until the regular membership fee of \$5 is reached.

The Association, a non-profit organization, gets 90 per cent of its income from membership fees, Haislet said. The other 10 per cent comes from the University and special projects including the sale of records, rings and blazers.

"WE DON'T TRY to make money on records and such," Haislet said. Using the record, "Songs of the University of Minnesota," as an example, Haislet explained that 700 of 900 records were used for complimentary purposes or sold

at cost to band and chorus members. "In three to five years we expect to get our money back," he said.

The Association's Board of Directors of 40 alumni determines policy. Fourteen colleges in the University are represented by members of the Board. "We want to organize General College and the departments of journalism, social work and other specific groups that aren't organized in the Alumni Assn. as they are in their own colleges," Haislet said.

The Association also raises money to finance scholarships and fellowships. "For example," Haislet said, "there was not a single freshman scholarship before 1948." Students had to get here before scholarships were awarded, Haislet explained. "We need 1,000 freshman scholarships; we have 450."

A THIRD FUNCTION of the Association is to support its legislative steering committee which serves as a "continued education project," Haislet said. Under the direction of Stanley Wenberg, University vice president for educational relationships and development, the steering committee determines what role the University should play in legislative matters.

In addition to these purposes and functions, the Association recommends distinguished alumni for the University's Outstanding Achievement Award and for the Alumni Service Award.

Prof Takes Trip, Says Danger Lurks in Selma

"It's just like a guerilla war. I never went anywhere alone, and I was afraid to walk down the street on Washington's Birthday."

Dr. Matthew Stark, assistant professor and coordinator of human relations programs for the University, spoke Thursday about his recent trip to Selma, Ala. "It's worse than the papers report, and I was appalled at the unbelievable conditions existing there and throughout the South," he said. "The whites are mentally sick with hatred."

Stark returned this week from a week's tour of the South sponsored by the American Civil Liberties Union (ACLU). Stark is a member of the Minnesota ACLU board.

Stark visited southern universities to recruit law students and faculty to help the ACLU with its civil rights efforts and to explain the human relations policies and activities of the University.

While in Selma and Marion, Ala., Stark met with Dr. Martin Luther King, who is conducting a voter registration drive in the communities. "He is fabulously effective as a teacher and a very moving speaker," Stark said. "Dr. King is preaching love, nonviolence and enforcement of the Constitution, but Gov. George Wallace and the whites are preaching hate, racism and the violation of the Constitution."

Stark said that white officials

are doing everything possible to prevent Negro registration. "There are some 30,000 Negroes in Dallas County, Ala., and yet only about 150 have their vote," Stark said.

Calling himself "one of those white, northern agitators," Stark said that things cannot get much worse in the South. "Everybody can do more," he said. "The University is doing very well and if it continues to really educate people, then it will be doing a lot for civil rights."

What's Doing

Today

Alpha Mu Sigma meeting—7:30 p.m. "Tokyo Olympics." Keith Carlson. B-52D Union.

Dance Instruction—7 to 8:30 p.m. Union main ballroom. Instructor: Gerry Moore.

Minnesota Bird Club "Members Night"—8 p.m. Members will show slides of birds. Museum of Natural History auditorium.

UBOG Ethnic Dance Committee Hungarian dances—8 to 10 p.m. Instructor: Myrtle Hoppe. Union men's lounge.

University Toastmasters meeting—7 p.m. Toastmaster: Ramki. Topicmaster: Tim Eastman. General Evaluator: John Sturm. Guest speaker: Prof. Raj, visiting Fulbright professor from India. "India's Population Problem." 355 Union.

Wednesday Night Dance presents The Stompin Underbeats—8:30 to 11 p.m. Union main ballroom.

YDFL executive board meeting—3:30 p.m. 344 Union.

WEST BANK

Society for Advancement of Management election meeting—8 p.m. 130 BA.

West Bank Hi-Lites Committee Hospitality Night—7 to 11 p.m. BA 170.

West Bank Hi-Noon Varieties Committee "State of the Union" film—Noon. CB 5.

ST. PAUL CAMPUS

Forestry Club—7:30 to 10 p.m. Rouser Room A and B.

(Continued on Page 10)

FOR YOUR FREE DEMONSTRATION DRIVE IN THE ALL NEW SIMCA
CALL ROBERT UTNE
227-5564
DAY OR NIGHT

NEW LOW COST RATES

AUTO INSURANCE

FOR YOUNG DRIVERS

| | | | |
|----------|---------------|----------|---------------|
| 18 to 19 | from \$172.00 | MARRIED | |
| 20 | from \$148.00 | 18 to 21 | from \$115.00 |
| 21 to 25 | from \$128.00 | 21 to 25 | from \$ 86.00 |

ALL NATION AMERICAN ALLIED

Days 339-9661 RICHARD DORNFELD, AGENT Eves. 425-3685
MONTHLY PAYMENTS — WE CAN INSURE ANYONE

Pick your model...



but finance in advance and save!

Phone: 339-8741

Yes, we're here to help you...

4th N. W. NATIONAL BANK CEDAR & RIVERSIDE

Bank on the West Bank



THIS IS THE MGB THAT CAN BE YOURS

You need not race to enjoy the fruits of racing. The MGB is a pleasure to drive under any conditions. The 1798 cc engine develops 98 HP at 5400 rpm, cruises at 100 and has a top speed over 110 mph. Four-speed gear box, twin carbs, responsive rack and pinion steering, racing type disc brakes up front, 10-inch drums in the rear. Cockpit and bucket seats upholstered in English leather, roll-up windows, removable hard top and/or easy stowing convertible top, lockable trunk and room for a couple of kids in the back. Like to drive the new MGB? Stop in. There's one at our showroom now.



SEE THE MGB AT: **FRED BAKER IMPORTED MOTORS**

1197 UNIVERSITY AVENUE ACROSS FROM THE PROM ON THE MIDWAY

Call us FIRST Before Buying Anything for Your Car.
EXPERTS in USED AUTO PARTS
— Transmissions —
— Engines — used & rebuilt parts or complete
— Body Parts —
— Tires —
SUSSMAN AUTO PARTS
1529 WASHINGTON JA. 1-3603

DAILY AUTO CENTER

Cagers Grope Past Iowa 78-70

By DAVE MONA
Daily Sports Editor

IOWA CITY, Iowa — In what was unanimously hailed as the worst officiated game of the year, Minnesota sweated out a 78-70 vic-

tory over Iowa at Iowa City last night.

The victory, a tribute to a travel-weary team, brought the Gophers' conference record to 10-2 and strengthened their hold on second

place. MEANWHILE, at Madison, Wisconsin, Michigan's Wolverines clinched at least a tie for their second straight Big Ten title by virtue of a 98-75 win over the

Badgers. Michigan stands atop the conference with a 12-0 mark.

Minnesota travels to Michigan in a final desperation attempt to unseat the defending champions on Saturday afternoon.

But here in the tightly compact Iowa field house Tuesday night things were far from cozy for the few brave Gopher rooters who mingled in a sellout crowd totaling 7,300.

For a while Minnesota, taking advantage of Iowa's defensive confusion, jumped to an early lead which they never relinquished.

PACED BY Lou Hudson, who made seven of his first nine shots, the Gophers outran the Hawkeyes to stake a commanding 39-23 half-time lead.

Iowa took play away from the Gophers in the early stages of the second half. Minnesota committed four turnovers in the first 150 seconds.

The Hawks kept chipping at the Gopher lead and with the help of a bothersome press and some hot shooting by Chris Pervall and Gerry Jones outscored their neighbors to the north in the second half 47-42.

THE GOPHER FORCES were noticeably weakened when leading scorer Hudson fouled out with 20 points with 6:43 left to play.

Here Don Yates took up the slack. Playing his best game of the season he gunned in 18 big points and hauled down 12 rebounds.

Needing possession of the ball,

Iowa took a multiple choice test and chose to foul Dennis Dvoracek. But they flunked. Denny made five free throws in the last six minutes.

The closest Iowa came was at 68-65 with 3:21 remaining.

Minnesota outrebounded the Hawkeyes 38-34 and shot 47 per cent for the game. Iowa shot a 33.8 field goal percentage, a frigid 22.5 for the first half.

CAGE NOTES: The Gophers were on the train for nine hours and were unable to practice when they reached Iowa City . . .

Branch McCracken, Indiana basketball coach, has ended speculation that he would retire at the end of this basketball season. He announced that he would do so yesterday . . .

Minnesota's basketball team is rated the sixth best team in the nation by the Associated Press. They are ranked eighth by United Press International . . .

Illinois trampled Northwestern last night 93-70.

Box Score

| MINN. (78) | FGA | FG | FTA | FT | PF | TP |
|------------|-----|----|-----|----|----|----|
| Hudson | 14 | 9 | 2 | 2 | 5 | 20 |
| Clark | 14 | 4 | 3 | 2 | 0 | 10 |
| Northway | 11 | 5 | 7 | 6 | 2 | 16 |
| Yates | 14 | 8 | 9 | 2 | 2 | 18 |
| Dvoracek | 4 | 1 | 11 | 2 | 4 | 10 |
| Martins | 3 | 2 | 0 | 0 | 1 | 4 |
| Presthus | 0 | 0 | 1 | 0 | 1 | 0 |
| TOTALS | 61 | 29 | 28 | 20 | 18 | 78 |

| IOWA (70) | FGA | FG | FTA | FT | PF | TP |
|-----------|-----|----|-----|----|----|----|
| Rodgers | 12 | 3 | 3 | 1 | 5 | 7 |
| Jones | 16 | 7 | 5 | 3 | 3 | 17 |
| Pervall | 26 | 8 | 7 | 5 | 4 | 21 |
| Riddle | 4 | 0 | 0 | 0 | 4 | 0 |
| Bamaszek | 2 | 0 | 0 | 0 | 0 | 0 |
| Peoples | 15 | 7 | 8 | 4 | 3 | 18 |
| Chapman | 4 | 2 | 3 | 3 | 3 | 7 |
| TOTALS | 80 | 27 | 26 | 16 | 22 | 70 |

For Big Ten Meet this Weekend . . .

Wrestlers Well Prepared

With a rugged season's schedule behind them, Minnesota's wrestling team enters the Big Ten conference meet at Columbus, Ohio this weekend full of confidence and determination.

The Gopher grapplers got plenty of preparation for the meet last weekend in Oklahoma. Pitted against the nation's two best teams, Minnesota lost twice, to Oklahoma State 26-0 and to Oklahoma U. by 17-9.

COACH WALLY JOHNSON was quick to report that despite the lopsided scores his boys performed real well.

"We wrestled better than we have all year," stressed Johnson. "The boys certainly got a tremendous workout against some of the very best wrestlers in the country."

The squad returned from the weekend journey in good shape with the possible exception of junior heavyweight Jon Staebler. He was thrown to the mat very hard Friday night and might have suffered an injury to his back.

"We had Jon X-rayed when we got back," said Johnson worriedly, "and we expect the doctor's final report Wednesday. We just don't know if he'll be able to go (to Columbus); his loss would hurt us."

LEE GROSS IS hoping that reoccurring minor ailments will not slow down his chances for defending his championship in the 157-pound class. "We're shooting for the top," assured Gross. "We know that we are the underdogs."

Gross will face his toughest competition from Michigan's Rick Bay, who was the 157-pound champ in 1963 but was injured last year.

Lewis Kennedy, who was Minnesota's other Big Ten winner in 1964, is currently serving as Johnson's aide at all practice sessions. "It takes a certain amount of luck, both in referee's decisions and in the opponents you draw, to win a tournament," said the experienced tutor.

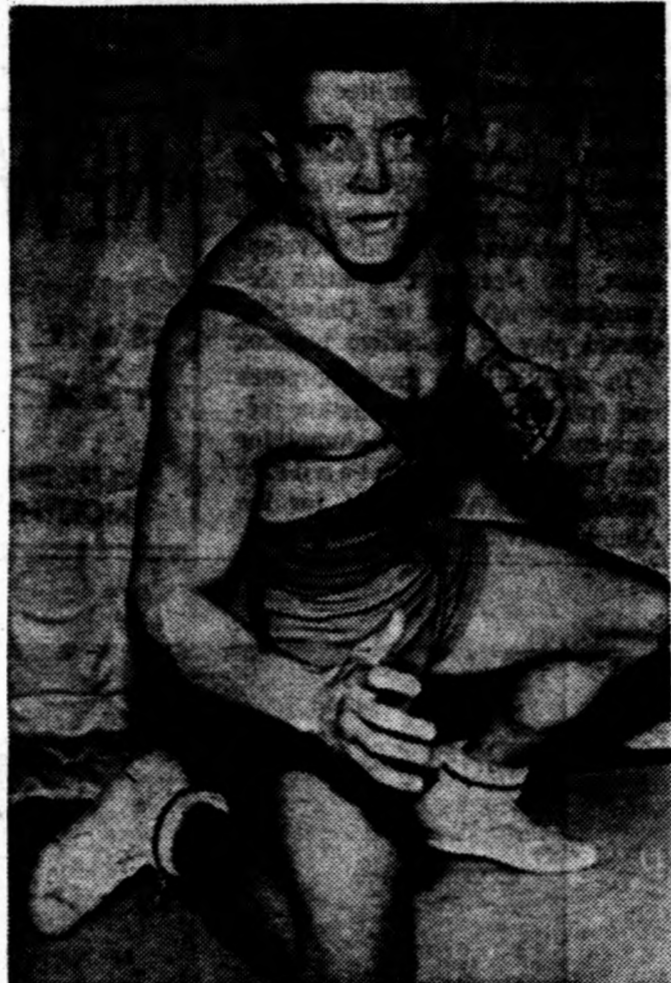
KENNEDY AND JOHNSON both agree that all squad members have a good chance to place, but that inexperience could take its toll.

"The 'old heads' around the league have the advantage in a tournament," said Johnson, "but we have been getting a tremendous effort from our young-

sters so far and I believe we'll continue to get the same. Any one of them is capable of placing in the top four."

The eight men who will make the trip tomorrow include: Jim Anderson, 123-pounder who is undefeated in the conference; Larry Lloyd, 130-pounds; Terry Barrett, 137 pounds; Ron Ankeny, 147 pounds; Gross, Klein, 167 pounds; Bob Ramsted, 177 pounds; and either Staebler or senior John Patton, heavyweight.

"This team has been a real joy to me," smiled Johnson. "They sure aren't afraid of competition."



GOPHER 157-POUNDER LEE GROSS
He defends his Big Ten title this weekend.

Woog Misses Scoring Title by Three Points

Doug Woog fell three points short in his bid for the Western Collegiate Hockey Assn. (WCHA) individual championship.

The Minnesota center finished with 27 points on 13 goals and 14 assists. Ahead of him were Mel Wakabayashi of Michigan and

Dennis Hextall of North Dakota. Wakabayashi totaled 30 points, Hextall had 28.

GARY HOKANSON was the only other Gopher to find a spot in the top ten. His 10 goals and 13 assists for 23 points were worth eighth place in the final statistics.

Five other Minnesota hockey players finished in the top 25 scorers. Craig Falkman finished in 12th place with 19 points. Roy Nystrom, Larry Stordahl and Jack Dale were deadlocked for 18th with 17 points. Bruce Larson and Denny Zacho were only one point behind.

The Gophers travel to Houghton, Michigan this weekend to face second place Michigan Tech in a two-game total goal series. The winner moves to the WCHA finals.

Problems of the less than adequate Michigan Tech rink will be complicated by the balanced scoring the Huskies have displayed this year. They placed four men in the top 20 conference scorers and had several within a few goals of the group.

All-Star Basketball

Territorial Hall faces Frontier Hall tomorrow night in an all-star dormitory basketball contest. Game time is 7 p.m. in Williams Arena. The public is invited.

Teams are composed of intramural basketball players living in the two men's residence halls. Starting for Territorial are Rick Hampton, Denton Jakobitz, Charles Sanders, Tom Sakel and Glen Wirtanen. The Frontier line-up includes Ray Tanner, Robb Totushek, Dennis Zelinski, John Wilkins, Rog Michalski and Gene Hatfield.

Minnesota Daily

I-M Slate

| TODAY | | Court |
|---|-----------|--------------------------|
| Basketball | 7 p.m. | |
| Territorial Hall vs. Frontier Hall | 7:25 p.m. | Wms. Arena |
| 3rd Graders vs. Phi Gamma Delta Beaters | 8:25 p.m. | |
| Ranger AC vs. Phi Delta Theta Blue | | Wms. Arena |
| Cavell All-Stars vs. Wildcats | | |
| ESA Greyhounds vs. I.M.C. | | Wms. Arena |
| Winner: Phi Epsilon Pi Gold or Lakers vs. Territorial VI or Phi Delta Epsilon | | Volleyball at Cooke Hall |
| Physiology vs. Geology | | 3 |
| Microbiology vs. Counselors | | 4 |
| Phi Chi Setters vs. Phi Beta Pi Machine | | 3 |
| Sigma Chi vs. Evans Scholars Dwarfs | | 3 |
| Territorial IV Horsemens vs. Frontier III | | 2 |
| Centennial VIII Blue vs. Frontier X | | 3 |
| Territorial IX White vs. Tri-House | | 4 |
| Centennial VIII Schults vs. Frontier V | | 2 |
| Evans Scholars Green vs. Sigma Nu | | 3 |
| Minn. Commons Club vs. Goldfinks | | 4 |
| Jolly Testators vs. Andrews House | | 2 |
| Bowling - Minneapolis Campus | | |
| Open-Independent League | | |
| Osterichs vs. 3 D's | | 5-6 |
| Cavaliers vs. M.D.'s | | 7-8 |
| Splits vs. L.B.J. | | 9-10 |
| Bel Aires vs. Chasers | | 11-12 |
| Misfits vs. No Names | | 13-14 |
| Splitfinders vs. Guttermen | | 15-16 |
| Women's Staff League | | 5:50 p.m. |
| Passsetters vs. Untouchables | | 5-6 |
| Physical Medicine vs. Pin Busters | | 7-8 |
| Go Getters vs. Burton Rebels | | 9-10 |
| Coordinates vs. The Cations | | 11-12 |
| Mixups vs. Alley Cats | | 13-14 |
| Gutterbells vs. Diehards | | 15-16 |
| M.R.H. League | | 6:15 p.m. |
| Centennial IV Red vs. Centennial VII | | 3-4 |
| M.R.H. League | | 8:15 p.m. |
| Territorial V Fiftys vs. Centennial VIII | | 1-2 |
| Centennial I vs. Frontier IV Fows | | 3-4 |
| Frontier X vs. Centennial III | | 5-6 |
| Frontier VIII vs. Centennial IX | | 7-8 |
| Territorial IV vs. Frontier VI | | 9-10 |
| Frontier III vs. Merritt-Andrews | | 11-12 |
| Territorial III vs. Centennial II | | 13-14 |
| Territorial X vs. Centennial III | | 15-16 |
| Bowling - St. Paul Campus | | |
| Faculty League | | 5:30 p.m. |
| Agronomy vs. Horticulture | | 1-2 |
| Game Birds vs. Imperfect Competitors | | 3-4 |
| Timber Cruisers vs. Forest Products | | 5-6 |
| Biochemistry vs. Lake States | | 7-8 |
| Faculty League | | 7:30 p.m. |
| Weeds vs. Plant Pathology | | 1-2 |
| Soils II vs. Horticulture | | 3-4 |
| Crops vs. KTC-A-TV | | 5-6 |
| Bowl Weevils vs. Engineers | | 7-8 |
| Hockey at Williams Arena | | 6:40 p.m. |
| Redlighters vs. ESA Barflys | | 6:50 p.m. |
| Phi Kappa Psi vs. Campus Cobblers | | 7:50 p.m. |
| Turfside 7 vs. Syndicate AC | | 8 p.m. |
| Clubbers vs. Sigma Alpha Epsilon | | 9:05 p.m. |
| Dents vs. All-Stars | | 9:15 p.m. |
| Skuzzers vs. Viaduct Inn | | 10:15 p.m. |
| Delta Theta Sigma vs. Alpha Tau Omega | | 10:25 p.m. |
| Misfits vs. Surshots | | |

I-M Scores

| BASKETBALL | |
|--|--|
| Aggies 56, St. Clairs 46 | |
| Evans Scholars Green 55, Newman Blue 44 | |
| Acacia 53, Foresters II 28 | |
| Territorial I Roadrunners 59 | |
| Delta Sigma Delta Black 47 | |
| Jolly Testators 48 | |
| Sigma Alpha Epsilon Lions 41 | |
| Mayo-Goodhue 64, Counselors 37 | |
| Lakers 44, Phi Epsilon Pi Gold 37 | |
| Territorial VI 52, Phi Delta Epsilon 33 | |
| Hornet AC 86, Phi Beta Pi Machine 20 | |
| Nu Sigma Nu Amks 45, Centennial X 34 | |
| VOLLEYBALL | |
| Centennial III 5, Centennial I Black 0 | |
| Territorial I 4, Territorial II Titana 1 | |
| Xi Psi Phi Blue 4, Phi Chi Spikers 1 | |
| Centennial IV 5, Frontier IV Fows 0 | |
| Frontier VII 3, Centennial II 2 | |
| Nu Sigma Nu Cadavers 4 | |
| Delta Sigma Delta Gold 1 | |
| Psi Omega B 5, Alpha Kappa Psi 0 | |
| Chinese Students 5, Korean Students 0 | |
| Delta Sigma Delta A 4 | |
| Gamma Eta Gamma 1 | |
| Forest Lakers 4, D-Necks 1 | |
| Alpha Chi Sigma 4, Xi Psi Phi Black 1 | |
| Dugans AC 5, Delta Sigma Delta Foilers 0 | |

Coaches' Wives Tell Real Story of Feud

By ANNE GILLESPIE

Well-informed sources recently revealed that the infamous Kundla-Mariucci feud is a fraud.

Wives have a way of shattering illusions. Pauline Mariucci and Marie Kundla say that Johns Kundla and Mariucci not only make civil remarks to each other occasionally, but that the couples see each other socially often.

BUT THERE'S MORE to the story than that. Each wife claims allegiance to her husband's sport. "Hockey is my favorite sport," Mrs. Mariucci said.

"I really enjoy watching basketball," Mrs. Kundla said. "Mrs. Mariucci says that I've been brainwashed though. I'm from Minnesota and she says that my husband talked me into liking basketball better than hockey. But Mrs. Mariucci is from Champaign, you know, and that is a real basketball hotspot."

Questioned about her past, Mrs. Mariucci admitted that she is from Champaign and that Champaign is a town wild for basketball. "Illinois did have a hockey team when I was in school," Mrs. Mariucci said, "but I had only been to one hockey game before I met John." Hockey did bring the Mariuccis together, however. "Illinois had to import hockey players from the Iron Range and they introduced me to John," she said.

Mrs. Kundla goes to hockey games when the basketball team is out of town. "I find that I can relax at hockey games. I'm not so tense." Mrs. Mariucci goes to an occasional basketball game, too.

Added fuel for the fire is the next generation of Mariuccis and Kundlas. The Kundlas have a 13-year-old son who "lives every play at University games" according to his mother. The Mariucci's only son (John, 11) is a defenseman for a park board hockey team.

Both women are happy as coaches' wives. "It would only be difficult to be a coach's wife if you didn't understand the sport at all. I'm not an expert," she added, "I'm just a fan."

Mrs. Mariucci also finds it necessary to know hockey fairly well. "I had to learn about it after I married John. I really don't think that it's hard to understand."

Class B Field Trims ... I-M Basketball Continues

By JOHN MOON

All-University Class B intramural basketball moved another step closer to the final game as the Territorial I Roadrunners, Mayo-Goodhue, and the Jolly Testators posted quarterfinal wins.

Dave Larson paced the Testators to their fifth straight victory without defeat, a 48-41 margin over the Sigma Alpha Epsilon Lions. Larson had 17 points, high for both teams.

JIM LAMMERS with 14 and Warren Litynski with 10 also aided the Testators' scoring attack. It was 12-all at the quarter and 26-20 for the winners at intermission. A slow third period saw the Lions pull to within 30-28 with one quarter to play, but then the Jolly Testators exploded for 18 points.

Bill Johnson had 14 for SAE, which is now eliminated from further competition with a 2-2 record. The Jolly Testators face Mayo-Goodhue in the semifinals.

Chuck Schultz had 18 points to pace Mayo-Goodhue to its fifth consecutive win, a 64-37 romp over the St. Paul Campus Counselors.

THE WINNERS outscored the Counselors 29-12 in the final quarter to seal a 35-25 lead after three periods. It was 13-6 after one quarter and 19-13 at the half.

Keith Carey was one of four Roadrunners in double figures as his team hiked its record to three

wins in four starts, a 59-47 decision over Delta Sigma Black.

Craig King and Bob Hietala chipped in 12 apiece and Bruce Uttermark added 10. For the losers, Phil Fabel got 15, Steve Christensen and Max Thompson 14 each.

IN CLASS C action, Mark Stageberg poured in 23 points as Acacia won a first-round clash over Foresters II 53-28. Acacia faces Centennial III in the semifinals.

Other Class C quarterfinal contests saw Territorial VI drop Phi Delta Epsilon 52-33 and the Lakers edge Phi Epsilon Pi Gold 44-37. The two victors meet in

the lower bracket semifinals.

Don Neisen picked up 19 points for the Lakers, while Rick Hamp to carried Territorial VI to victory with 20. Neisen's performance helped the Lakers overcome a 14-12 deficit at the quarter to race to a 26-18 advantage at intermission.

I-M Free Throw Contest
Intramural free throw contest entries will be accepted through Saturday. Today's hours are 2:30 to 10 p.m. in Cooke Hall and 5:30 to 10 p.m. in the Field House.
Contestants shoot two rounds of 25, and those making 40 of 50 are eligible to shoot 50 more for the individual title. Bill Johnson of Sigma Alpha Epsilon leads with 93 of 100.

Readers' Theatre Presents
ROBERT SPEIGHT
In A Program Commemorating
T. S. ELIOT
Minneapolis Public Library
Wednesday 3rd March
at 8:30 p.m.
Admission Free

**SORORITY
SPRING RUSH**
APRIL 7-13
\$3 REGISTRATION FEE AND TRANSCRIPT
REGISTER: MARCH 29 - APRIL 5, 225 CMU


CAMPUS FINE ARTS
OAK AT WASHINGTON S.E.
FE 1-5400 - PARK FREE

ACADEMY AWARD

NOMINATION!
"BEST FOREIGN FILM"
Woman in the Dunes

HELD OVER!
2ND GREAT WEEK!

Features at 7:20 & 9:40




TARSITY NEAR U of M
12th AND 4th ST. S.E.
FE 1-2492

STARTS TONIGHT!
Features at 7:35 & 9:45

WINNER OF 4
ACADEMY AWARD Nominations!
"BEST ACTOR" — Peter Sellers
"BEST PICTURE of the Year"
"BEST DIRECTOR" and "BEST SCREENPLAY"

Peter Sellers • George C. Scott
Stanley Kubrick's
Dr. Strangelove
or: How I Learned To Stop Worrying And Love The Bomb

the hot-line
suspense comedy



**LET US HELP YOU PLAN
YOUR BUSINESS CAREER**

Check the courses you want at
MINNEAPOLIS BUSINESS COLLEGE
Upper Midwest's Leading Business College
90 years of training people
to plan a business career

CLIP AND MAIL

| | |
|---|--|
| <input type="checkbox"/> Private Secretarial | <input type="checkbox"/> Business Administration |
| <input type="checkbox"/> Medical Secretarial | <input type="checkbox"/> Accounting (C.P.A.) |
| <input type="checkbox"/> Receptionist Secretarial | <input type="checkbox"/> Salesmanship and Merchandising |
| <input type="checkbox"/> Office Machines | <input type="checkbox"/> Speed Shorthand |
| <input type="checkbox"/> Receptionist Clerical | <input type="checkbox"/> Key Punch—IBM and Remington Rand Automation |
| <input type="checkbox"/> Comptometer | |
| <input type="checkbox"/> Data Processing, Wiring, Programming | |

Check your interests and mail this coupon
Get FREE complete catalog

NAME _____
ADDRESS _____

Classes Start April 5 - May 3
DAY AND EVENING CLASSES

COMPLETE OR REFRESHER COURSE
FREE LIFETIME EMPLOYMENT SERVICE
APPROVED FOR VETERAN TRAINING

Accredited—Accrediting Commission for Business Schools
MINNEAPOLIS BUSINESS COLLEGE
NICOLLET AT 10th (Zone 3) FE 2-4338

BOOKCASES
All Sizes—Redwood, Pine, Walnut in Stock. Special Sizes to Order.
from \$12.50

CREATIVE FURNITURE PARTS
642 Second Ave. No.

AUTO INSURANCE
Lowest Rates!
DUNN & CURRY
4820 W. 77TH ST.
WA 7-8401 644-8217

AIRLINE STEWARDESSES

FLY with the World's Most Experienced Airline!
PAN AMERICAN WORLD AIRWAYS

Needs girls to fly to Europe, United Kingdom, Africa, Asia and the Far East.

Must be single; age 21 to 27; height 5'3" to 5'8"; weight 105-185 pounds; well proportioned and attractive.

Must have good health and good vision without glasses.

Must be High School graduates (2 years college preferred.)

MINIMUM SALARY TO START
\$301.50 per month with frequent increases

Many other benefits including 90% discount vacation travel, 30 days vacation per year.

STEWARDESSES WILL BE BASED IN NEW YORK, SAN FRANCISCO OR SEATTLE

You should apply only if you meet the above qualifications. Interviews in Minneapolis will be conducted on Saturday, March 6, 1965. Appointments can be made by phoning 332-8071.

United RENT A CAR & TRUCK

UNDER 21? (BUT 18 OR OLDER)

RENT A CAR!

UNITED BREAKS TRADITION. RENT A CAR IF YOU'RE UNDER 21.

- ★ MUSTANGS, BARRACUDAS
- ★ FULL SIZE CARS
- ★ CAMPUS LOCATION (WASHINGTON AT UNIV.)
- ★ COMPACT SEDANS, HARDTOPS
- ★ RATES INCLUDE GAS, OIL, INS.
- ★ 17 OTHER CONVENIENT LOCATIONS

DUE TO STUDENT RESPONSE WE ARE INCREASING OUR CAMPUS FLEET

NEW RATES IN EFFECT

Under 21 Years Old (Weekdays) Compacts, \$4.50/day + 8c/mile.
Mustangs & Full Size Cars, \$5.50/day + 10c/mile.
WEEKENDS—Compacts \$5.50/day + 8c/mile.
Mustangs & Full Size Cars, \$6.50/day + 10c/mile.

REDUCED RATES FOR OVER 21

CALL **332-1359** CALL

UNITED RENT-A-CAR SYSTEMS
155 IRVING AVENUE NORTH

WHAT'S DOING

(Continued from Page 7)

Skeewaksurs — 9 to 10 p.m. 202-4-6 Student Center.
SCBOG dance instruction—7 to 8 p.m. North Star Ballroom.
Monthly meeting—3 p.m. Student Center lounge.

FOUNDATIONS

B'nai B'rith Hillel Foundation luncheon forum—12:30 p.m. Prof. Leonard Bart. "The Value of Giving Extremists a Hearing." Hillel cafeteria. 1521 S.E. University Ave.

Conservative Baptist Student Union meeting—12:30 to 1:20 p.m. "The Seventy Weeks of Daniel." Dr. W. Vanhetloo. 343 Union.

Inter-Varsity Christian Fellowship prayer meeting—8 to 8:20 a.m. 30 Ford Hall. CLA prayer meeting—1 to 1:20 p.m. 327 Union. Christian Issues discussion—12:30 to 1:20 p.m. 326 Union.

Lutheran Student Assn. non-credit course—12:30 p.m. R. K. Wiedenhoft. "Luther and the Reformation." Classroom. LSA Business meeting—3:45 p.m. Classroom. Vespers—7:30 p.m. The Rev. Louis Ulrich. "What About Heaven?" Chapel. 1813 S.E. University Ave.

Newman Student Assn. Scripture I—9:30 a.m. Father Conroy. "Book of Acts of God." Sacramental Theology—10:30 a.m. Father O'Leary. "Christ Acts Through the Sacraments." Introduction to Catholicism — 7:30 p.m. Father Garrelts and Father Conroy. "Catholicism." John Fisher room. Discussion group—6:15 p.m. Father Conroy. "National Catholic Reporter." Comstock Hall. 1701 S.E. University Ave.

Student Religious Liberals meeting—7:15 p.m. "Medical Ethics." Dr. John Wolf. 608 Washington Ave.

United Campus Christian Fellowship Jesus and the Gospels study group—9:30 p.m. Evening prayer—10:30 p.m. 507 S.E. Oak St.

University Episcopal Center Holy Communion — 7:45 a.m. Morning prayer—8:15 a.m. Holy Communion—10:30 a.m. Evening prayer—4:30 p.m. Litany, Penitential Office and Holy Communion—7:30 p.m. Choir practice—8 p.m. 317 S.E. 17th Ave.

University Lutheran Chapel Ash Wednesday Lenten—8 p.m. Holy Communion.

Wesley Foundation study group—4 p.m. The Rev. Ouradnik. "Confessions of a Liberal." Wesley Council—6:45 p.m. Seminar room. 1209 S.E. 4th St.

ST. PAUL CAMPUS
Lutheran Student Assn. choir—8 p.m. Luther Hall. 1407 N. Cleveland Ave.

Opinion . . .

(Continued from Page 5)
 deed an exalted performance.

I imagine that Wallace Stevens is turning in his grave on hearing his wonderful religious poem, "Sunday Morning" quoted in so meretricious an article in such an off-hand way.

Gerald Gene Granroth
 CLA senior

Disagrees on Lens

To the Editor:

Sidney Lens has visited both Indonesia and Malaysia recently and has done extensive research into their respective governments, economics, histories and points of view. He came to the University Friday to tell us what he has learned concerning those countries. Howie Kaibel, Daily columnist, arrived after the speech was over and the question-answer session had begun. Yet Mr. Kaibel somehow feels qualified to tell us what Mr. Lens said and how wrong he was.

Mr. Lens did not speak "in favor of . . . Indonesia's unwelcome aggression." These would indeed be strange sentiments for a pacifist—as is Sidney Lens—to voice. Mr. Kaibel speaks of Malaysia as a "British-protected state." Had he come to the speech he would have heard that Malaysia is an artificial federation established by an imperialist Britain in order to give Caucasians in that area a stronger voice in the government than is their numerical due. This was managed by joining together groups of people who do not have common ties of nation, language or interest.

I am disappointed in Mr. Kaibel's irresponsibility in reviewing for us what he himself has not witnessed. And I am disappointed in the Daily's Associate Editor, who attended Mr. Lens' speech and must have known that Mr. Kaibel did not, for printing Mr. Kaibel's column. I would not expect the editor to run a review of a play, movie or symphony by a person who has not seen it, and I fail to see why he should run what purports to be a review of a speech by a person who has not heard it.

Francis Galt
 CLA sophomore

Couldn't Get Tickets

To the Editor:

Things are getting pretty low when hundreds of students are turned away from the Minnesota-Michigan basketball game because of the student section being filled. What the hell do we season pass-

EXPRESS BUS
 TO CAMPUS
 788-4909
 SERVING: Col. Hts., Fridley, Spring Lake Park, Blaine, St. Anthony Vll.
 Arrive 7:45—Leave 3:30 & 5:10

holders pay our \$12 for—to be turned away? Whoever was responsible for this disgusting situation had better realize that our basketball team is supported first of all by the students and that we should have first priority to seats in a big game such as that in which we were refused seating.

Lauren Kennison
 CLA freshman
 Stephen Paul Uppman
 GC freshman

Asia . . .

(Continued from Page 4)

must be focused into a rather limited sphere. Viewed in this light, any policy which would allow Red China to extend this sphere is indefensible. If our commitment is firm in Southeast Asia, China's expansion will be frustrated.

Looking into the future, it is not altogether impossible that China's revolutionary fervor will also wane, or at least be channeled into the pursuit of internal goals. A large-scale war is not inevitable, but it certainly will not be avoided by allowing China to enlarge its sphere of operation in Asia.

(David C. Balcom is a Law freshman and co-chairman of the Society for Conservative Studies.)

PATRONIZE YOUR ADVERTISERS

Masterpiece
ROBERT MERRILL
 BARITONE
 Thurs., March 4
 8:30 p.m.
 NORTHROP AUDITORIUM
 \$2.00 \$2.50 \$3.00
 \$3.50 \$4.00
 105 NORTHROP, U. OF M.
 DAYTON'S (ALL STORES)
 FIELD-SCHLICK (ALL STORES)


BRANCH
LIBRARIAN WANTED
 JULY 1, FOR NEW BRANCH
 Opportunity to develop a community program. Building now under construction—15,000 sq. ft.; 50,000 volumes; serve a population of 97,000; meeting room seating 125.
 5th year degree and three years' professional experience required. Salary \$7,228 - \$8,788 in five-increment steps. Good fringe benefits. Write:
DAN A. WILLIAMS
 Director of Public Library of Des Moines
 Des Moines, Iowa 50309

CMU Presents:
DANCE INSTRUCTION
 taught by
GERRY MOORE
 Wed: 7 - 8:30 p.m.
CMU GOPHER HOLE
 Girls 25c — Guys 50c
 (UBOG)

Professor Leonard Bart
"The Value of Giving"
EXTREMISTS
A Hearing"
 12:30 TODAY
 1521 Univ. Ave.
 B'nai B'rith Hillel Foundation
 Luncheon Forum
 Across from Fcwell Hall

On Wings of Love

A special way of saying how very much you mean to him, thoughtfully expressed by one of the fine diamonds from our gem collection. Further evidence of his love is shown by the care he uses in selecting your ring from a firm noted for value and integrity, as shown by our membership in the American Gem Society.



MEMBER AMERICAN GEM SOCIETY
 CERTIFIED GEMOLOGISTS

Gustafson JEWELERS
 BUDGET TERMS AVAILABLE
 505 MARQUETTE AVE. EST. 1927

SEE EUROPE ON A BUDGET

Americans Abroad TRAVEL SERVICE

Enjoy more than a month touring in England, Holland, Germany, Switzerland, Liechtenstein, Austria, Italy, San Marino, Monaco and France for as little as \$547 all expense. Travel with a congenial young group of students of your own age and interests. We also provide steamship or jet accommodations to tour rendezvous (for transoceanic swimmers). Over 20 tours to choose from—no service charge on tickets.

317 14th AVE. S.E.—IN DINKY TOWN NEXT TO PERINE'S
 Your nearest ticket office to anywhere

SYMPOSIUM ON
"THE PUBLIC RESPONSIBILITY OF THE NATURAL SCIENTIST"

Panel:
 CYRUS B. BARNUM, Physiological Chemistry
 MAURICE VISSCHER, Physiology
 ERNAN McMULLIN, Philosophy
 ALBERT LINCK, Plant Pathology and Physiology
 RUSSELL HOBBIIE, Physics

THURSDAY, MARCH 4, 4:00 P.M.
 17th Avenue UCCF Center, 331 17th Ave. S.E.
 PUBLIC INVITED

Bill . . .

(Continued from Page 1)

Reps. M. K. (Mac) Hegstrom (C., St. James) and Kenneth E. Scott (C., Fairmont). A similar bill has not been introduced in the Senate.

This would be the first time a legislator has been on the Board of Regents, if the bill passes. It provides that if the legislator ceases to be a member of the legislature, he will also cease to be a member of the Board.

The additional member would be elected by the Legislature from the membership in the same manner as the other at-large regents are elected. University regents are elected by the Legislature now for six-year terms. One is elected from each of the state's eight Congressional districts, and the remaining four are elected at large. If a vacancy occurs, the Governor fills the position by appointment.

According to the proposal, an amendment would be submitted to the voters in the 1966 general elec-

tion. The voters would vote yes or no on the following amendment: "Shall Art. III Sec. 3 of the State Constitution be amended so as to provide for election of one additional member of the Board of Regents of the University, such member to be a legislator?"

RADIO - TV - HI-FI

Need Repairing?
We CARRY and SERVICE Radios
Hi-Fi, TV and Traffic Appliances
COLOR TV
419 14th Ave. S.E. FE. 2-3777

"Go FOR PIZZA the GO-FER"

Orders To Go
712 WASHINGTON AVE. S.E.



Delivery on Campus
FE. 1-5815

CLASSIFIED ADS

FOR RENT

20TH AVE. S., 915. Brand new. Now renting. 26 unit bldg. Deluxe 1 sec. urity locks, intercom. Efficiency & 1 B.R. apts. Cptn., furn. & unfurn. Adults. Close to U. of M., Augsburg, 3 hospitals. FE. 8-0433, 929-6753.

120 UNITS fully carpeted and fully air conditioned + large swimming pool. Just opened. Immediate occupancy. Directly across from Har Mar Shopping Center at 36th and Snelling, St. Paul. Reasonable rents from \$100 up. See resident manager.

AVAIL NEXT FALL. Quart. Beaut. 3 yr. old 2 b.r. 2 bath house. Bicy. dist. to U. Comp. furn., well equip., fire pl., att. garage. Exact dates flex. \$200 mo. & util. MI 5-5478.

20TH AV. S.—915—Brand new. Now renting. 26 unit bldg. Deluxe security locks. Intercom. Efficiency & 1 b.r. apts. Cptn., furn. & unfurn. Adults. Close to U. of M., Augsburg, 3 hospitals. FE 8-0433, 929-6753.

LGE. 1 B.R. Married eple. Small child welcome. Walking dist. U. 331-9380.

5 ROOM unfurn. apt. Avail. Mar. 1. Ldry. furn. Prospect Park. 338-0126.

APTS. FURNISHED

UNIVERSITY AVE. S.E., 304. Nice, clean, 1 B.R. apt. 335-6197.

APARTMENTS furnished, reas. 2 bks. on West Bank. FE. 8-9257.

4TH ST. S.E., \$109. Lga. furn. 1 bdr. apt. Newer bldg. Cptn. air-cond. See caretaker or WA. 6-2092.

WEST BANK Manor Apartments, 418-423 Cedar Ave. Newly furn. and carpeted, sleeping rooms at \$40 and up. Apartments at \$75 and up. Many conven. WA 7-9567.

FOR PROF. COUPLE. All incl. Avail. Mar. 1. \$100 per mo. 509 7th Ave. S.E. FE. 6-0036 eves.

SPACIOUS 1 B.R. Apt. \$70. FR. 4-5589 or FR. 7-5145 aft. 6 p.m.

FURN. BEDROOM APT. U. dist. Married couple. April 1st. FE. 1-2250.

NR. W. BANK. 3 rms. Pvt. bath. Avail. immed. \$75. JA. 9-5535.

MAHOGANY paneled Studio Apt. 5 min. bus to U. \$75. Avail. Mar. 15. WA. 7-5065.

1129 8TH ST. S.E. Furn. 2 bdr. apt. Near U. FE. 5-5916—331-6828.

4 ROOMS, share bath. JA 1-0884.

FURN. Efficiency apts. 1629 6th St. S.E. 331-2912.

LGE. EFFICIENCY APT. 212 Walnut St. S.E. 1 blk. from U. 331-1399.

L.G. 3 BDRM. Furn. Apt. w. fireplace nr. U. \$150 mo. ut. pd. FE 1-2562 after 5 p.m. 1008 8th St. S.E.

APTS. UNFURNISHED

2054 BREWSTER. New, 2 B.R., mod. elec. kitch. Near Farm campus, trans., shopping. 645-5377 & 699-2608

5TH AVE. S.E. 621. 1 B.R., eptd., air cond. WA. 6-2092 or FE. 5-0885.

LGE. UPPER DPLX. 3 B.R., Liv. rm. Din. room. Stove & ref. Families only. \$115. & util. 17th & Como S.E. 331-2322.

1405 5TH ST. S.E. Avail. immediately. Air cond., furn. avail. 3 min. to Campus. 331-4121 or 331-4566.

1 B.R./poss. 2: Lg. kitch., cl. porch, lg. l.r., d.r. gar. \$125 mo. Adults. FE. 8-3437. Avail. April.

ROOMS FOR RENT

INTERNATIONAL HOUSE—Room & board or board only. Friendly atmosphere. 600 9th Ave. S.E. 331-1346.

GIRLS: Brand new, reas. TV lounge. 215 5th Av. S.E. FE 9-1279 aft. 6 pm

U 1/2 blk. \$5/11 wk. Club kit. FE 6-5026

MAN \$7 wk. U 1/2 blk. Kit. FE 2-5710.

EXTRA LARGE hskpg. room. Refrig. range & water. Pvt. bath. \$65. WA. 2-1432.

ROOM for girl in exch. for 6-7 hrs. of wky. cleaning. Near U. FE. 8-1322.

GIRLS: clean, nicely furn. Single & dbl. rms. Nr. Hosp. Refrig., phone. Call 331-9402.

SLEEPING ROOMS, MAN, nr. campus. Newer home. Refrig. \$37. FE 1-5198.

SINGLE YOUNG ADULTS. Choice

homelike Co-ed Residence near U. Excel. meals. Andrew House, 708 5th St. S.E. 331-4292, 9-5 wkdays.

ROOMMATES WANTED

NEED A ROOMMATE to share expenses? For the roommate of your choice, Call 722-6939. Roommates Unlimited.

GIRL TO SHARE w/3. 617 Univ. S.E. Call aft. 5. 333-4744.

GIRL TO SHARE 5 Rm. Apt. w/1. \$32.50 plus utilities. 336-1988.

GIRL TO SHARE 2 B.R. Apt. w/3. \$40 mo. Near U. 339-3851 eves.

GIRL TO SHARE APT w/3. Rent \$34. 406 Erie St. S.E. 331-4633.

2 GIRLS to share 2 bdr. apt. 2 blocks from U. Immed. 335-2346.

1-2 GRAD. School males. 700 Univ. SE. 373-3997. Female.

1 MALE to sh. apt. \$45 mo. FE 1-3021.

1 GIRL to sh. apt. w/2. Rent \$50 mo. Call aft. 5:30. 331-7381.

GIRL TO SHARE large furn. house w/3 near Dinkytown. Call 339-1723.

GIRL GRAD or 21+ to sh. w/2 Inter-camp. bus line, 2 b.r. 644-4168.

WANTED TO RENT

SMALL INEXP. HOUSE w/fenced in backyard, or yard that can be fenced. Pref. nr. U. & S.E. Stove & refrig. nec. Will redecorate. 373-3585 days or 374-4594 eves.

HOMES FOR SALE

1956 E. RIVER Terr. 3 B.R. colonial near Shrine Hospital. Mr. Everson, FE. 5-0701 owner-agent.

FOR SALE

MICROSCOPES: Sales & Repair. New, used, guaranteed. Bower & Haack, 414 14th Ave. S.E. FE 1-5791

IMPORTED AM-FM radios \$26.95 plus Color TV. 419 14th Ave. S.E.

FRONTIER HALL dorm contract. Spring qtr. Call 331-6400. Rm. 137.

REGAL 12 STRING GUITAR. 6 mos. old. Ex. cond. Call 335-8296 aft. 6.

DORM CONTRACT. Pioneer Court, Spring quarter. 373-6028.

DORM CONTRACT, double, rest of winter & spring. Centennial rm. 6109 FE 9-7421.

FOR SALE: Single room contract in Comstock—Spring qtr. 333-2161. G-45. FE. 3-2161, Room 520E.

2 RM. CONTRACTS for double rm.—Comstock—Spring qtr. 333-2161, 645.

COMSTOCK dbl. rm. dorm cont., Sp. qtr. Leslie Champs, 531E, FE 3-2161.

POWELL HALL dorm contract for spring quarter. Dbl. rm. 331-6078.

COMSTOCK dorm contract, spring qtr. 333-2161, M35, call or message.

HI-FI EQUIP.—privte party, like new. 772-8894.

DORM contract for sale, Sanford Hall, sprg. qtr. FE. 9-0934, Room 400.

WEDDING DRESS, sz. 12. Call 331-9067 after 6.

DORM CONTRACT—Powell Hall for Spring quarter. Call 349, 439-9531.

STEREO—All transistor port. Magnavox. 374-4594 eves. 333-3932 days.

ATTENTION all hockey players. Used Tacks. Good cond. 331-2678 eves.

NEW STEREO system w/sterero tuner. Best offer over \$225. 373-6569.

RACING SKIS, Castinger boots, & A&T poles, best offer. Must sell. Mike. WE. 5-2054.

AUTOS FOR SALE

'60 VW radio, heater, WSW, light grey. \$700. 777-6316 after 1 p.m.

'62 VW. radio, Good mech. cond. Some body damage. 644-7559, eves.

'63 FORD 406, 4 spd., tri-power, reas. Call after 7 p.m. 488-7880.

'62 IMPALA Sport Coupe, 327, stick, 19,000 act. miles. Call 224-7019.

'63 CORVAIR Monza, 4 speed, 2 dr., H.T., buckets, like new. Make offer or take over payments. 645-9828 eves.

'61 DODGE LANCER 4 dr., 36,000 mi., R&H, red, good cond. WE 8-9259 eves

'61 VOLKS. Sunroof. Radio, waw, white. Extra clean. 38,000 miles. 339-1141 or Liberty 5-3162.

'57 PLYMOUTH. New tires & radio. Excel. mech. cond. Not attractive. 374-4594 eves. 333-3932 days.

'58 MERC. Mont'y 2 dr. 50,000 act. mi. Radio. New tires, brakes, btry. & SB. Very cl. Y.&wh. Must sell. MI 5-8231

FOR SALE TYPEWRITERS

TYPEWRITERS cleaned, \$4 incl. ribbon. Sales, rntls. Crane's, Dinkytown.

NEW & USED FURNITURE

SAVE—FACTORY TO YOU UNPAINTED FURNITURE Desks, Chests, Bookcases, Chairs CEDAR LAKE FURN. TA. 4-1033 13 W. 26th St.

SEWING MACH. & Factory Off. 121 Main St. S.E., 14 blks. from U. has Xmas trade-in Singers, White, zig-zags, now recon., like new, \$5 to \$25. For appt. call MI 4-5627 or FE 5-2764.

STUDENT SPECIAL 3 piece mod. walnut bedroom set. Rec. \$199.—Now \$148. Modern styles. 4046 Central Ave. N.E. 788-9040.

HELP WANTED

DRIVERS 21-30 yrs. of age. Short part time shifts or full time shifts. 1st class equipment, vacation with pay, accident & sickness benefits, hospitalization & life insurance. Apply in person: YELLOW CAB CO., 127 1st Ave. N.E.

COLLEGE MEN PREFERRED Six men 18-25 for part-time work thru school year. Car nec. 724-6497.

4 MEN needed for part time. Immediate opening. Also full time. 226-1918

OPPORTUNITY 4 men needed for pt. time—immed. opening. Also full time. 226-1918.

NEED AN extra \$50 to \$60 per week? Car necessary. TA 2-8717 after 3 pm.

PERSONNEL SEARCH 332-6546 2606 Foshay Tower

RADIO-TV, Electronic Serviceman. Experienced. Apply Ken-Craft Hi-Fi. 404 14th Ave. S.E.

STEREO DIVISION of Nat'l Company has openings for part or full time men in its sales division. 1965 Impala bonus. Call Mr. Boyd at 866-7429 for appt. from 10 a.m. to 2 p.m.

NEED LOVING care for boys 2 & 3. Prefer nr. U w/yard. 722-4074 eves.

FEMALE TYPIST. Full time in our sales off. S.E. loc. Dict. mach. exp. nec. Will also ans. phone. Please call Evelyn for details. 335-7604. Victor Comptometer Corp.

PART-TIME TYPIST. Close to U. Flexible hours. Fee depending on ability. 645-0431.

ACCOUNTANT FEE PAID ACTING. MAJOR FURN FROM UPPER HALF OF CLASS W/A LITTLE EXP. SALARY OPEN, \$500 TO \$700.

ELECTRONIC TECHS. WHILE TRAINED \$4-\$600 SERVICE OR TRADE SC. TRAINED ADDIT. FORMAL TRAINING. CO. PD. FOR QUALIFIED MAN.

ELECTRICAL SALES TRAINEE FEE PAID TRAINING POS. AS ASST. TO NAT. SALES MGR. 2-3 YRS. COLL. OR SERV. TRAINED ELECTRONICS OR ELECTRICITY—ALL EXPENSE PD. START \$565. POTENTIAL \$1200.

LIFE EMPLOYMENT, INC. 512 NICOLLET RM. 900 FE. 6-5326

COLLEGE MEN AVERAGE \$50 FOR 15 HOURS.

SECRETARY—All-around office wk. Office manag. 8 to 5 p.m. Single 25 or older, good salary. FE. 1-3437. Ask for Kay.

2 BUS BOYS at Kappa Kappa Gamma Sorority. Call FE. 5-8307.

WANT: Young man; intelligent, quick. Work part time with insurance concern. Can lead as far as right person wants. WAGES + small apt. 825-2491—Mr. Goode.

NOW interviewing students for part time sales work. Rep. nat'l-known product. Excel. comm. pd. wky. Call Jeanne Nadal Cosmetics, MI. 5-9168.

WANTED: 2 busboys at Kappa Kappa Gamma sorority. Call FE. 5-8307.

SECRETARY—to work 8:30 to 5:00 Wed. thru Fri. Type, operate mimeo, answer phone, at First Congregational Church, 500 8th Ave. S.E., FE. 8-8789.

PART TIME. Car necessary. \$45 week guar. Call FR. 7-0804 or 339-1531.

MISCELLANEOUS AUTO INSURANCE—Phone 544-2708, Extension 300 or 646-3863.

SPANISH TUTORING—translation—interpreting. 881-6450.

NEW AUTO INSURANCE RATES for young drivers: 18-19 from \$172. 20 from \$148. 21-24 from \$128. Married: 18-20 from \$115. 21-24 from \$ 86 over 25 from \$ 68

RICHARD DORNFELD, AGENT All Nation-American Allied Call 339-9661 or 425-3685

AUTO INSURANCE Young drivers. New low rates (eff. March 1). If you can score well on Psych test?? Lyndale Agency. Inc. 7646 Lyndale Ave. So. 866-4908.

FRENCH TUT. by exper. teacher. Call eves. & wkends. TA 7-2354.

LOST & FOUND

LOST: Nursing pin from San Jose College. Reward. 777-5832.

REWARD! Bk. loose-leaf mtbk. & econ bk lost CMU 2/25. 699-0971, 644-6071

LOST: Hand-knit green & black neck scarf. Lost at film at Museum of Nat. Hist. Fri. aft. Sentimental value. Return to Daily editor, 10B Murphy Hall. Reward.

LOST: Br. wallet in vic. of McDonalds. Please drop in mailbox or call FE. 1-1071. Reward.

LOST: Ladies' wrist watch, gold face w/mesh band. Reward. PA 4-0439.

LOST: Men's glasses with dark gray gray frame. Rew. 331-6400. Rm. 256.

REWARD for return of camel colored suede coat taken from Pioneer Hall Fri., Feb. 26. Call Don, 373-3536. No questions asked.

Typing & Mimeographing

Typing—Electric typewriter. Experienced. Call Essene 560-2460.

Prof. Typing, on intercampus bus line. 645-1998.

Prof. Typist. Thesis, etc. 645-9514.

ELEC. TYPR. English major & exp. proofreader. GE. 4-9425.

Typing, exp. thesis, etc. 788-4311.

Typing, electric. PA. 2-6084.

Exp. Typing. 25c 336-7178.

Typing — 615 Oak St. — 331-3034

Typing, 25c incl. carbon. 698-6434.

PROFESSIONAL TYPG: IBM. Thesis, term paper. Mrs. Beaulieu 336-1422.

EXPERIENCED MBS., thesis, dissertation editing, typing. Call CA. 6-2016

Prof. Typing, thesis, etc. FE. 6-9289

Exp. Typist, prompt. TA. 4-5768.

Typing—will pick up at U. 537-9348.

Typing (near campus). 331-9233.

WILL DO TYPING. ST 1-7885.

Exp. Typing by U grad, former typing teacher. Elec. SU. 8-1207.

TYPING, EXP. Manuscripts and thesis.

936-8739.

TYPIST: Elec. typewriter. Specializing in Masters, Ph.D. 521-6639 after 5.

EXPERT & prompt thesis & manuscript typing. IBM. Ref. WA 6-0071

WILL DO THESIS or theme typing in my home. ST. 1-7885.

MIMEOGRAPHING. IBM elec. typing. Near St. Paul Campus. 645-9611.

Typing — Exp., prompt. WA. 6-3381

EXPERIENCED TYPIST — Call 330-4290 days, 8 a.m. - 5 p.m.

EXPERIENCED, dependable thesis typing. Mimeographing and Duplicating—Donalene—824-1608.

THESIS TYPING. 529-5865.

Typing. Manuscript & thesis. 459-3006.

Typing (NEAR CAMPUS). 331-9233

Typing 25c incl. carbons. 825-9794.

ORCHESTRAS

BOB LEE COMBOS "The Nightclub Sound" 920-1753 926-3626

JIM SUTHERLAND COMBO. 927-8390 MI. 6-9194

THE MARVE LEVINE ORCHESTRA "All Campus Favorites" 699-0933

THE VELVETONES Dick Marrone 861-1845

CHRIS KALOGERSON MUSIC Ronald Wlati FR. 4-1549

JIM RHODES ORCHESTRA "Superb Dance Music" 824-5187 881-7842

OFFICIAL DAILY BULLETIN

Students and staff are urged to read the Official Daily Bulletin as they are answerable for notices that affect them. They are also answerable for information on department bulletin boards.

Notice must be received by noon two days prior to publication and should be sent to Official Daily Bulletin, 217 Morrill Hall. Except for certain notices of unusual campus-wide importance, notices will be printed only once.

Volume 66 Number 109
Wednesday, March 3, 1965

ALL STAFF AND STUDENTS
• Anthropology Lecture
There will be a lecture entitled "The Ethnography of Communication" by Pro-

fessor of Anthropology Dell Hymes, University of California at Berkeley, today at 8:00 p.m. in 155 Ford Hall. It is sponsored by the Department of Anthropology and the Department of Concerts and Lectures. The public is invited.

• War Orphan Certification
P.L. 634 War Orphans must be properly in training and certify attendance from February 1, 1965 through February 28, 1965. War Orphans should certify no earlier than March 1, and no later than March 10, 1965. No certification means no check.

PROCEDURE

1. P.L. 634 War Orphans obtain form 7-5496 at 105 Morrill Hall.
2. If you dropped or changed to audit any courses, you are required to present a Last Date Slip (Form A126 or the green slip) signed by your instructor involved, showing precisely the last date you attended that class. The necessary forms are available at the same place at which you present your attendance certification form.
3. Report change of address or of num-

ber of dependents on forms available at 105 Morrill Hall, or 220 Coffey Hall.

- OFFICES: For Minneapolis Campus:
1. Information booth, first floor Morrill Hall.
 2. 105 Morrill Hall.
 3. Window 18, first floor Morrill Hall.
- For St. Paul Campus:
1. 220 Coffey Hall.

• Addition to Spring Quarter Class Schedule

Anthropology 122, Ethnology of Mexico and Guatemala, IV, MWF, (classroom to be announced at a later date), will be given spring quarter by Professor Wigberto Jimenez-Moreno, visiting professor from the National Museum of Mexico. He will also be offering the

Anthropology 206 Seminar, Ethnology. ALL DEPARTMENTAL SECRETARIES

• Research Contracts and Grants
The Training Division of the Office of Civil Service Personnel will present a four-session workshop on Research Contracts and Grants in Murphy Hall Auditorium beginning March 18. This is the schedule:

- March 18—General Information
March 25—N.I.H. Grants
April 1—Contracts (A.E.C., D.O.D., N.A.S.A., E.D.U.C., etc.)
April 8—Training Grants, N.S.F., Institutes, etc.

All sessions will begin at 1:30 p.m. Investigators as well as office staff are welcome to attend. Will you please notify those in your department who might be interested in this program? For further information, call extension 4366.

Band Will Give Concert Sunday

The University 50-member Concert Band Ensemble will appear in concert at 4 p.m. Sunday in Northrop Auditorium. The concert will be free to the public, according to University Bandmaster, Frank Beniciscutto.

LAST WEEK TO SIGN UP FOR 10 DAYS OF EXCITEMENT IN WASHINGTON & NEW YORK

Don't miss this opportunity to meet the people who live and work in these exciting cities.

YMCA 15th & University Ave.

COURT REPORTING WITH STENOGRAPH*

Provides an interesting and rewarding career for those desiring a position of importance and professional stature.

Financial rewards are exceptionally good with starting salaries \$6,000 to \$8,000 per year minimum range. Employment opportunities are ample throughout the entire country for official court reporters—free lance—and Federal court reporters.

Spring Quarter

DAY CLASSES MARCH 29
EVENING CLASSES MARCH 30

Visit the School—Write or Phone FE 8-6721 For Complete Information

The Court Reporting Course of MSB is approved by the National Shorthand Reporters Association.

Accredited by—The Accrediting Commission for Business Schools, Washington, D.C.

*The Stenograph—a silent, word at a time shorthand machine is featured in this course. Stenograph shorthand enables a person to take dictation at incredibly fast speeds over an extended period without fatigue or note distortion.

Lifetime Placement Privileges for Graduates

Minnesota School of Business

24 South 7th Street, Minneapolis FE 8-6721

TYPEWRITERS RENTAL - SALES AND REPAIR

MINNESOTA CO-OP JR.
612 WASHINGTON AVE SE
Between Harvard & Walnut

THEATRE SAINT PAUL

ST. PAUL ARTS AND SCIENCE CENTER

- "MARRIAGE GO ROUND" March 4, 5
"LONG DAY'S JOURNEY INTO NIGHT" March 6
"JEZEBEL'S HUSBAND" March 7

30 EAST TENTH STREET
224-2858



New! Dream Diamond Rings by Art Carved®

From the name most honored in diamonds—striking news in engagement ring design! Oh, so slender sculptures raising the diamond to utmost freedom, utmost glory. Come, compare! Each style from \$150.

- | | | |
|------------------|--------------------------|-------------------------|
| A. CATHEDRAL SET | Engagement Ring \$400.00 | Bride's Circlet \$15.00 |
| B. RAPTURE SET | Engagement Ring \$300.00 | Bride's Circlet \$15.00 |
| C. DOMINIQUE SET | Engagement Ring \$350.00 | Bride's Circlet \$20.00 |
- Rings arranged to show detail

As seen in SEVENTEEN, GLAMOUR, VOGUE

Willis
JEWELER

814 Nicollet

AFTER LAST NIGHT

(WILL JONES)

"Mama Rosa's is one of the top 31 restaurants in the Twin Cities. I still claim they make the best Pizza in town."

Mama Rosa's NOW OPEN!

NEW LOCATION—NEW ATMOSPHERE
COME ON OVER—RELAX—WE'LL TAKE GOOD CARE OF YOU

1827 RIVERSIDE

ONE BLOCK AWAY FROM THE OLD PLACE

338-9453



"KING OF PIZZA"

948 Raymond Ave.
St. Paul
PHONE 644-5868

15c OFF ON SMALL PIZZA
25c OFF ON LARGE PIZZA

WITH THIS COUPON
LIMIT: ONE COUPON PER ORDER

CMU PRESENTS:

'THE STOMPIN'

UNDERBEATS

8:30-11:00

TONIGHT

CMU Main Ballroom

STUDENTS, 50c

GUESTS, \$1.25

(UBOG) (Girls, No Slacks)