

County Level Reports

Please select your county from the drop down.

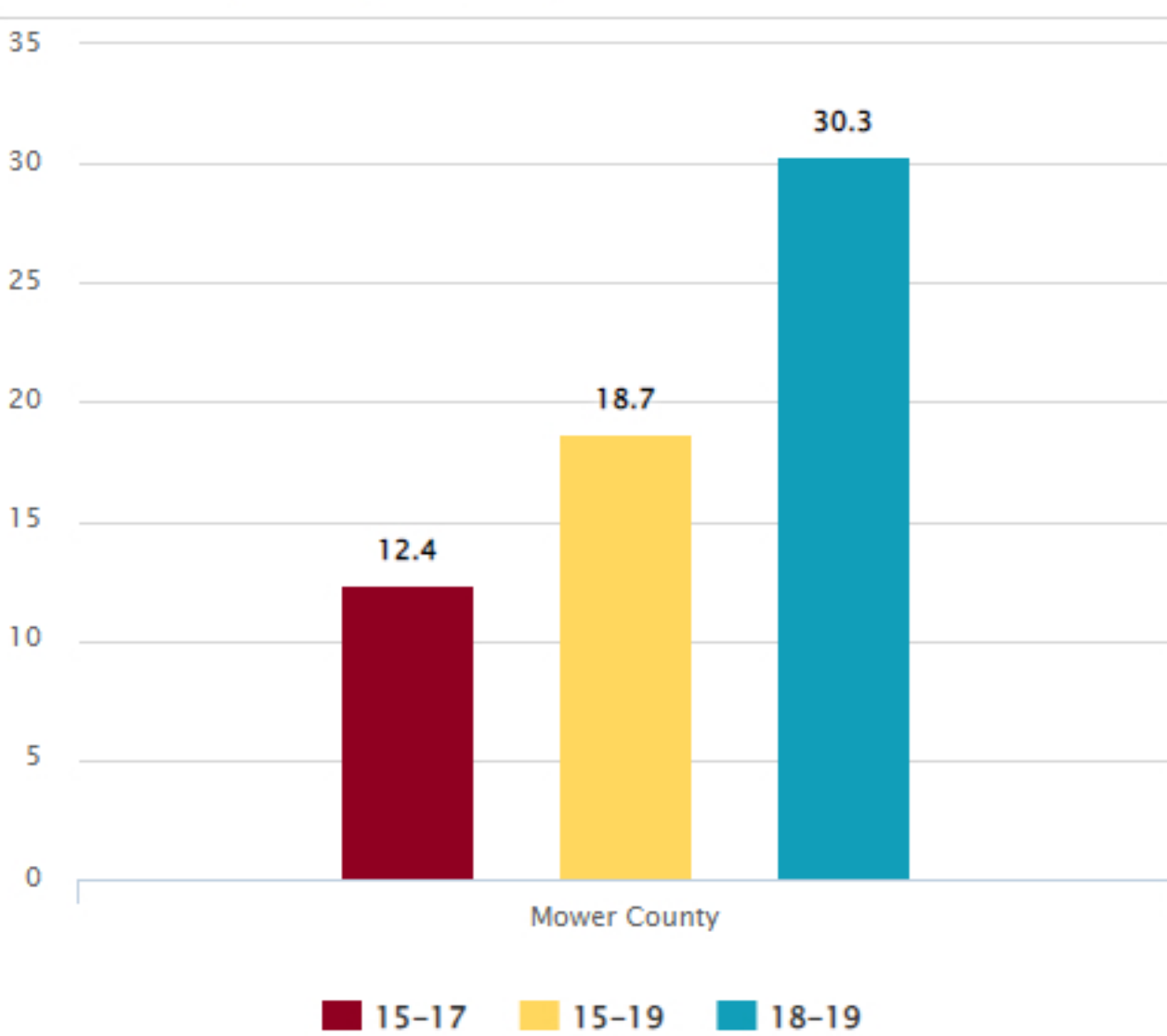
--Filter by Location
Mower County

Download your county report (PDF) ▾

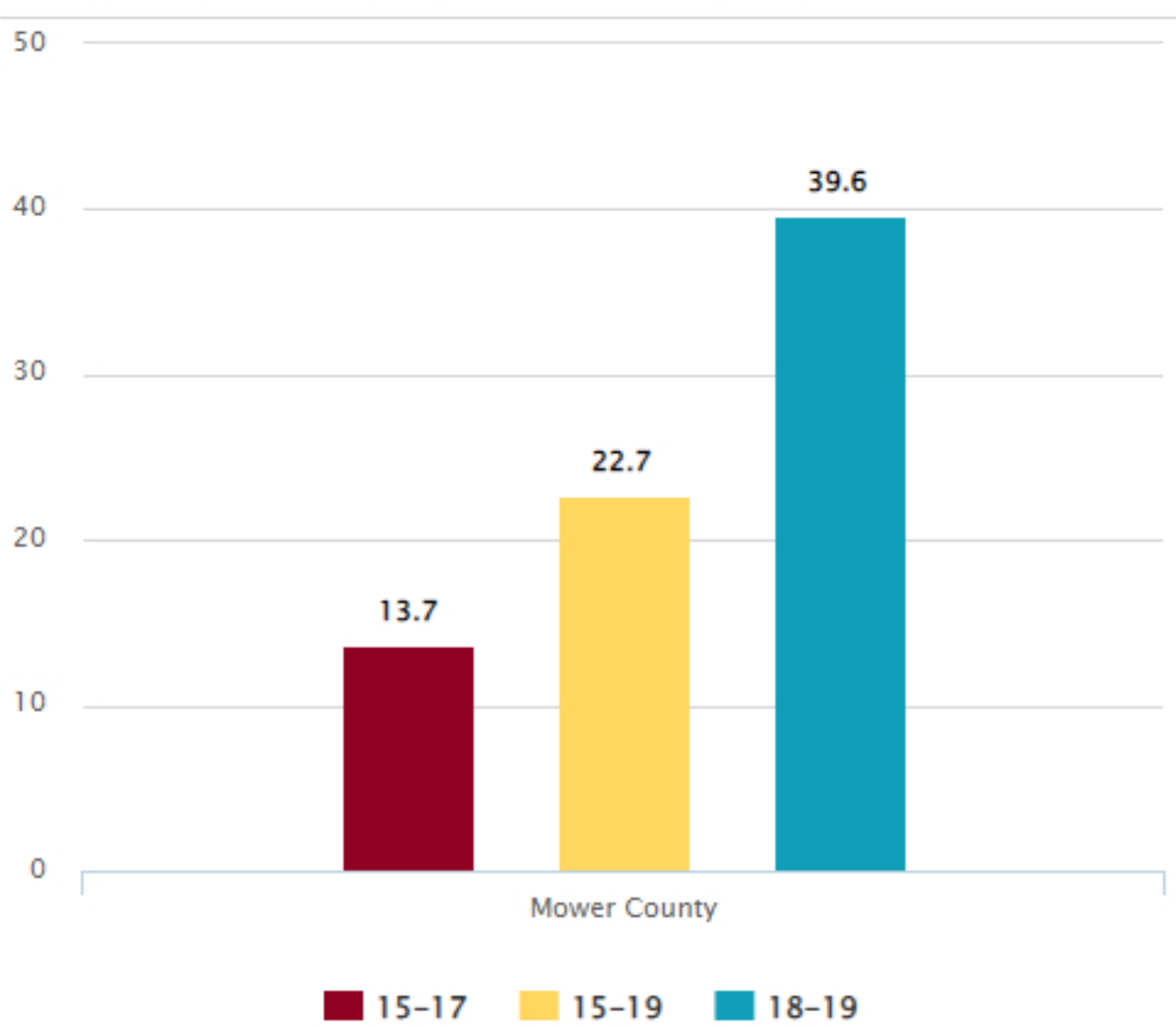
Pregnancy and Birth

From 1990 to 2020, the birth rate among adolescents aged 15-19 in the United States dropped 75%, reaching a record low of 15.4 births per 1,000.(1,2) The decline in adolescent pregnancy over the past two decades is likely due to a combination of improved contraceptive use and delayed initiation of sexual activity.(3) More recent declines have mainly been driven by increased use of highly effective contraceptive methods (IUDs and implants) and dual methods.(4,5)

Birth Rate (Births per 1,000)



Pregnancy Rate (Pregnancies per 1,000)



Sexually Transmitted Infections (STIs)

Although they account for only 6.5% of the population in Minnesota, adolescents age 15-19 accounted for (24.3)% of the chlamydia and 13.7% of the gonorrhea cases in Minnesota in 2021.(9,11)

Although they account for only 6.5% of the population in Minnesota, adolescents age 15-19 accounted for 25.2% of the chlamydia and 16.3% of the gonorrhea cases in Minnesota in 2020 (9,11).

1,125
Chlamydia Rate per 100,000 population (2021)

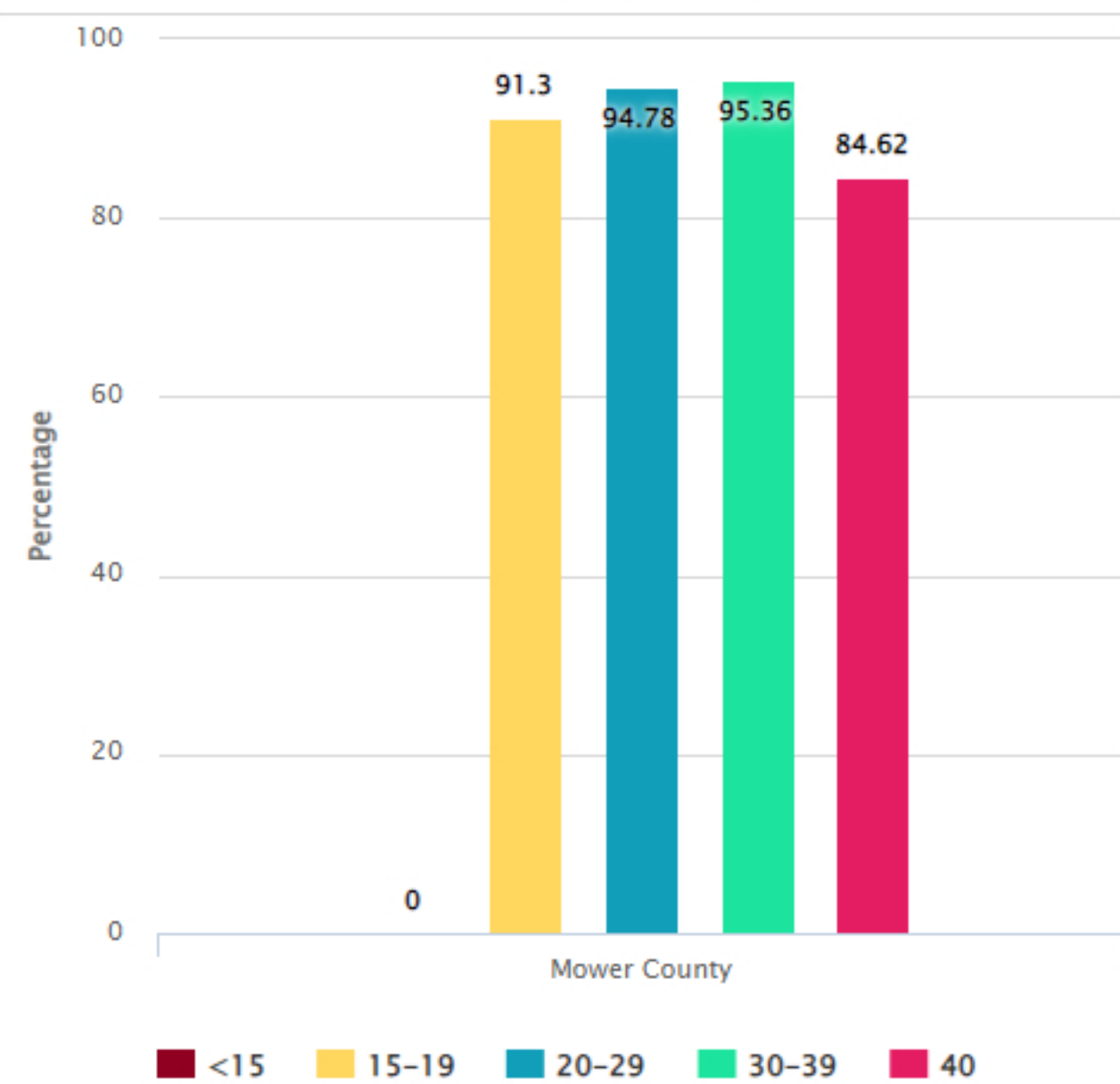
0
Gonorrhea Rate per 100,000 population (2021)

Prenatal Care and Low Birth Weight

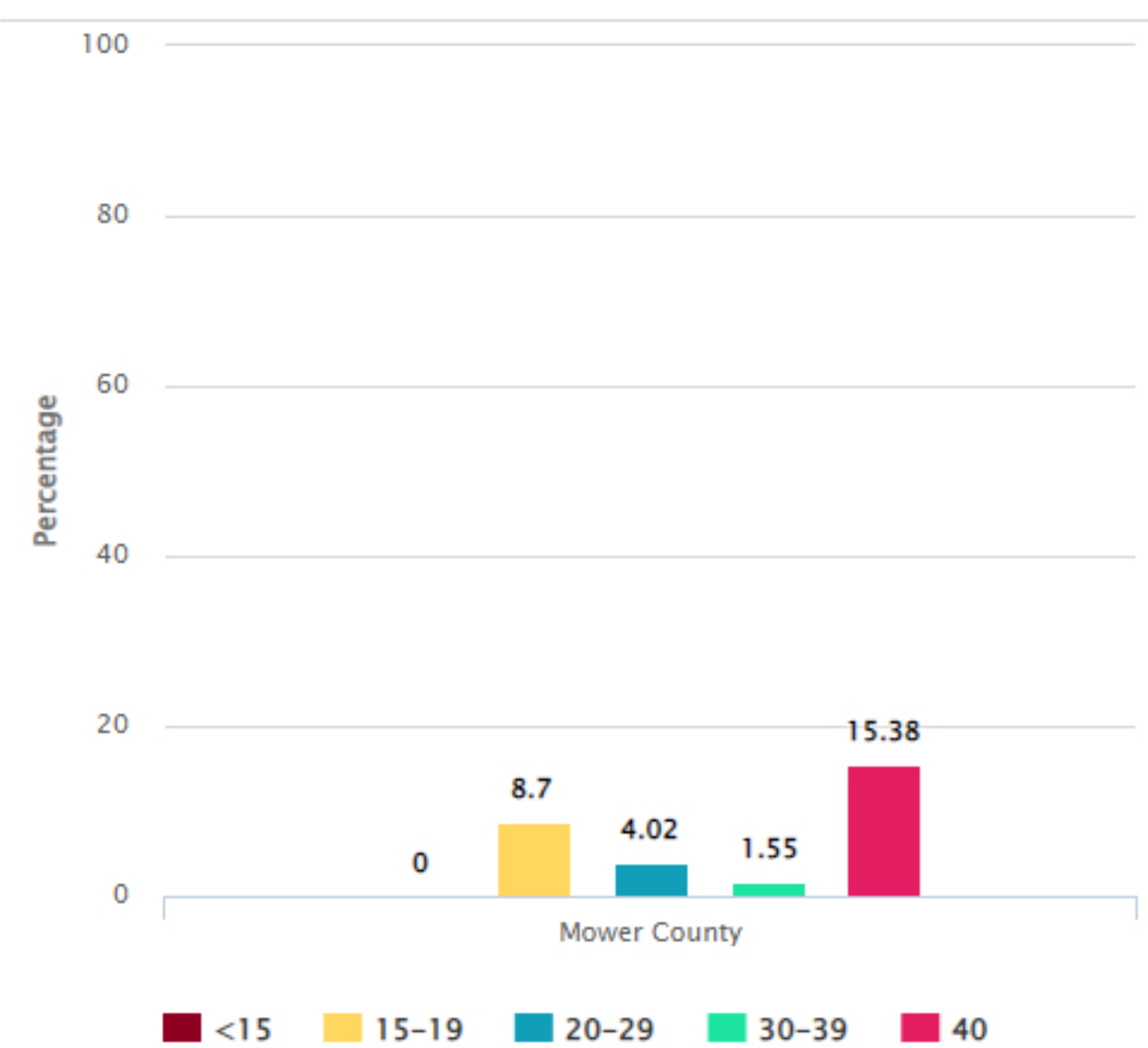
Access to prenatal care and support from family members may be the most important factor for improving the birth outcomes for adolescent mothers (18).

Infants born at a low birth weight are more likely than infants born at a normal weight to die within the first year of life. There are many factors associated with giving birth to a low birth weight infant, such as maternal age, health, nutrition, access to prenatal care, education level and contact with alcohol, cigarette smoke and lead (19).

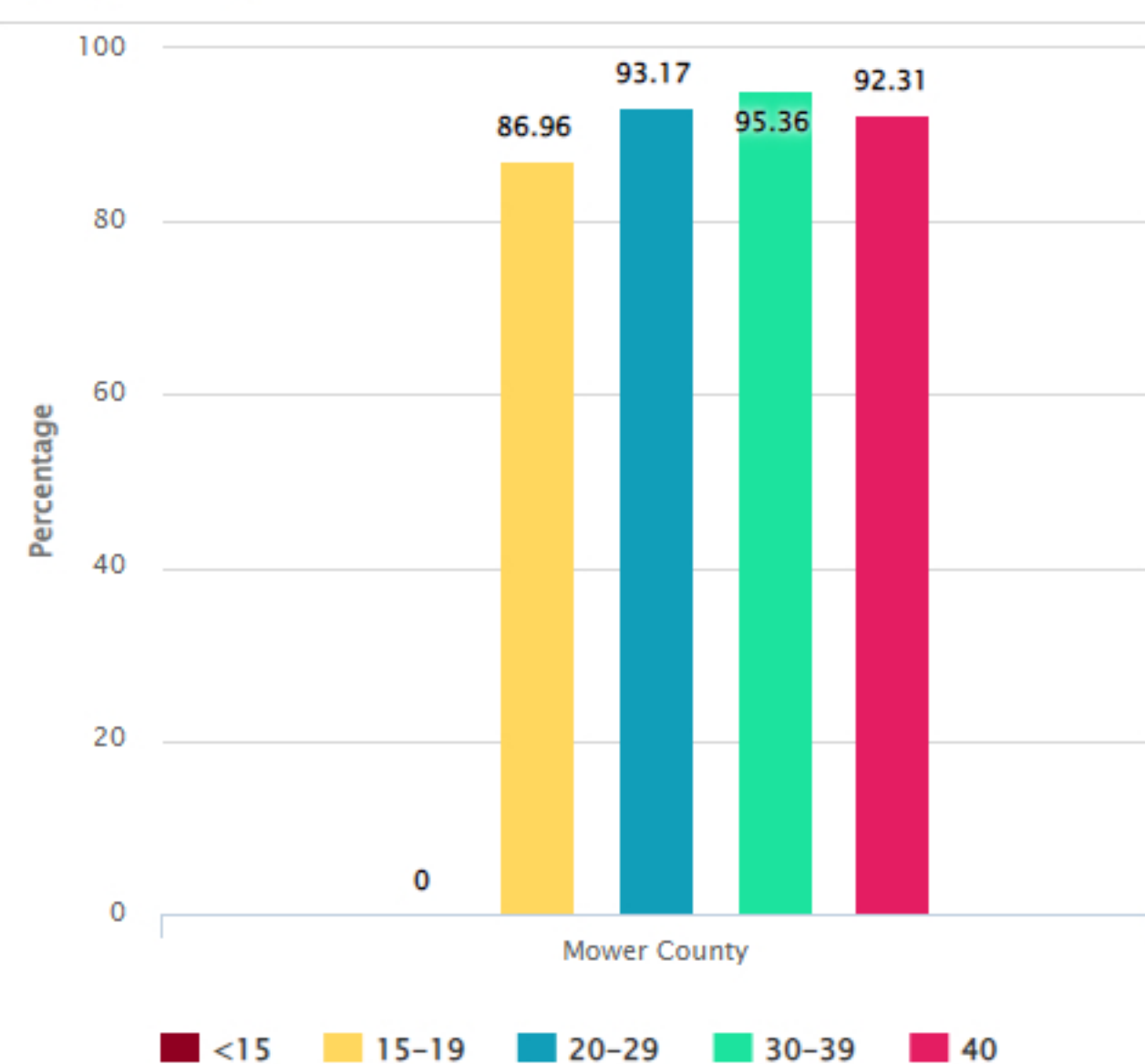
Percent of Pregnancies that Received Prenatal Care in the 1st or 2nd Trimesters by Age Range



Percent of Pregnancies that Received No Prenatal Care or Prenatal Care in the 3rd Trimester by Age Range



Percent of Births with Birth Weight over 2500 grams by Age Range



Percent of Births with Birth Weight under 2500 grams by Age Range

