

TWIN CITY CONVERSIONS

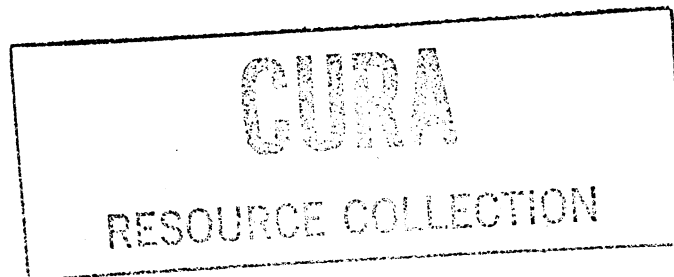
H1010

THE COMPLETE INVENTORY:

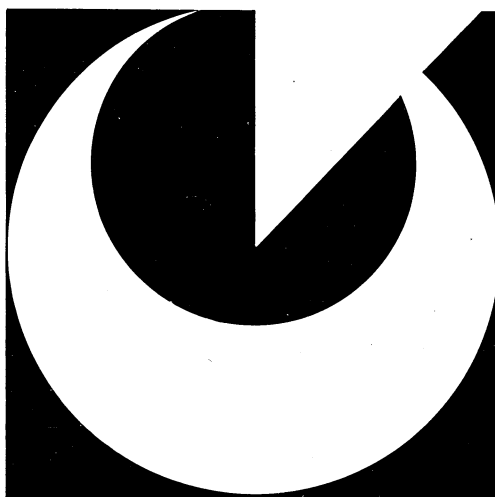
1970-1980

Milo Pinkerton





TWIN CITY CONVERSIONS



THE COMPLETE INVENTORY: 1970-1980

by
Milo Pinkerton

A publication of the Center for
Urban and Regional Affairs, 313
Walter Library, 117 Pleasant St.
S.E., University of Minnesota,
Minneapolis, Minnesota 55455

The content of this report is the
responsibility of the authors and
is not necessarily endorsed by CURA.

1981

Publication no. CURA 81-9

This report is not copyrighted.
Permission is granted for repro-
duction of all or part of the
material, except that reprinted
with permission from other sources.
Acknowledgement would, however, be
appreciated and CURA would like to
receive two copies of any material
thus reproduced.

Edited by Judith H. Weir

Cover design by Janet Huibregtse

CONTENTS

Publisher's Note	v
Introduction	1
Converted Buildings	3
Dakota County Condominiums	4
Scott County Condominiums	4
Ramsey County Recorded Condominiums	5
Ramsey County Unrecorded Condominiums	11
Hennepin County Recorded Condominiums	12
Hennepin County Unrecorded Condominiums	21
HOP IV	22
Ramsey County Cooperatives	23
Hennepin County Cooperatives	24
New Buildings	27
Hennepin County Recorded Condominiums	28
Hennepin County Unrecorded Condominiums	34
Hennepin County Cooperatives	34
Ramsey County Recorded Condominiums	35
Ramsey County Unrecorded Condominiums	36
Ramsey County Cooperatives	36

PUBLISHER'S NOTE

This work is part of a series of publications that developed from a study of housing conversions in the Twin Cities metropolitan area. The conversion studies were directed by Barbara Lukermann. Milo Pinkerton worked with her as project assistant. Graduate students in the Humphrey Institute of Public Affairs conducted most of the survey work in conjunction with a workshop in the Institute's Planning Program during the spring of 1980. Titles of the complete series of conversion publications are:

Twin City Conversions of the Real Estate Kind. Barbara Lukermann and others. CURA 81-5.

Twin City Conversions. The Condominium Market: Surveys of Activity, Developers, and Buyers. Barbara Lukermann and Milo Pinkerton. CURA 81-6.

Twin City Conversions. The Displacement Factor: A Survey of Out-movers. Thomas L. Anding and Rebecca Smith, CURA 81-7.

Twin City Conversions. The Case Studies: How the Finances Work. Milo Pinkerton. CURA 81-8.

Twin City Conversions. The Complete Inventory: 1970-1980. Milo Pinkerton. CURA 81-9.

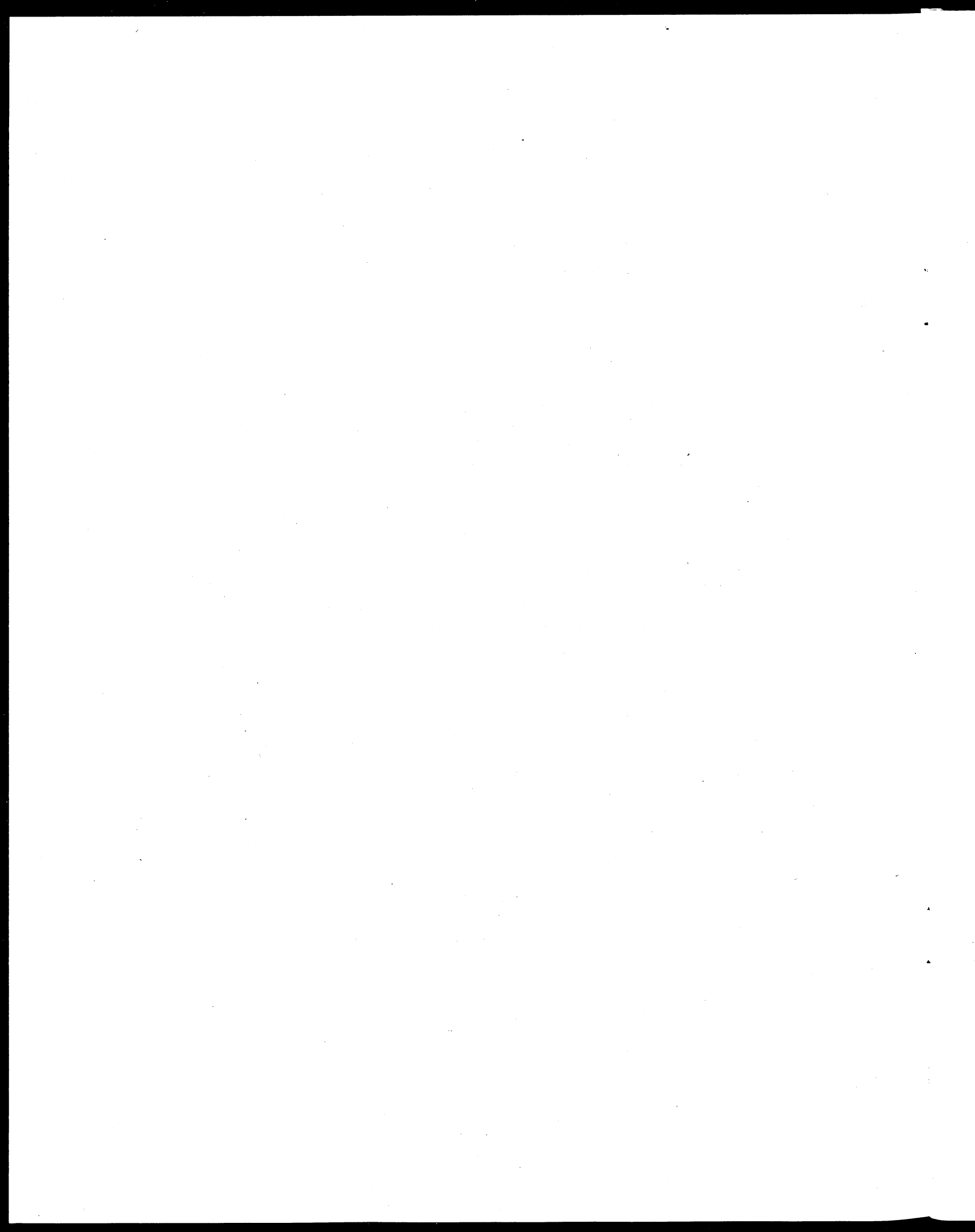
INTRODUCTION

The inventory here lists, to the best of our knowledge, all condominium and cooperative housing developments in the Twin Cities metropolitan area between January 1, 1970 and December 31, 1979. The list was collected from each County Recorder's office. Those buildings marked as "unrecorded" were identified by the County Recorder as being developed but had not at the time of our survey been legally recorded.

Our survey of condominiums, both converted and new, covered the seven county metropolitan area. The cooperative survey was for Hennepin County and Ramsey County only. Data on new condominiums in Carver, Dakota, Scott, and Washington Counties were taken from the Twin Cities Metropolitan Council tabulations (derived from Assessors Office) and are therefore not listed in this inventory.

The inventory is organized by county and presented chronologically by date of recording. "Year Built" refers to the date of construction of the building. "Number of Units" refers to the units following construction. "H.O." and "I.D." numbers were assigned by us to each project for the purposes of our study. Where developments were converted in phases, the H.O. numbers of related phases are listed in parentheses for all recordings under the same address.

Our inventory includes for converted units: 6,643 condominium units and 993 cooperative units (7,636 TOTAL); and for new units: 4,873 condominium units and 672 cooperative units (5,545 TOTAL).



CONVERTED CONDOMINIUMS & COOPERATIVES

IN

HENNEPIN COUNTY

RAMSEY COUNTY

DAKOTA COUNTY

SCOTT COUNTY

DAKOTA COUNTY CONDOMINIUMS

H.O. #	CONDOMINIUM	YEAR BUILT	DATE RECORDED	# OF UNITS
401.	Regency 2005-07, 09, 11 E. 122nd St. Burnsville	1970	1974-5	96
402.	Windham Hills 401 E. Burnsville Pkwy. Burnsville	1972-3	1974	123
403.	Ridgeview 12808-12992 Nicollet Ave. So. Burnville	1970	1975-7	402
404.	Woodhurst East 12600 Parkwood Drive Burnsville	1971	1972	50
405.	Woodhurst West 705 E. Burnsville Pkwy. Burnsville	1971	1972	49
406.	Scandia 13701-05 Nicollet Ave. So. Burnsville	1972	1976	36
			TOTAL	<u>756</u>

SCOTT COUNTY CONDOMINIUMS

H.O. #	CONDOMINIUM	YEAR BUILT	DATE RECORDED	# OF UNITS
501.	Lakeside Manor 5230 Candy Cove Trail Prior Lake	Pre-1970	8-33-78	6

RAMSEY COUNTY RECORDED CONDOMINIUMS

H.O. #	CONDOMINIUM	YEAR BUILT	DATE RECORDED	# OF UNITS
1.	Cleveland Terrace 1261-1269 Cleveland N. St. Paul	1969	3-4-70	14
2.	The Malloy Apartments 614 Grand - 62 S. Dale St. Paul	1906	12-28-71	12
4.	St. Albans Condominiums 62 S. St. Albans St. Paul	1901	11-17-72	6
5.	Summit Condominium 550 Summit St. Paul	1904	3-27-73	6
6.	Evergreen Place 854 Linwood & 855 St. Clair St. Paul	1915	4-4-73	8
9.	Parkview Terrace 2670-2680 Oxford St. N. Roseville	1968	5-25-73	108
10.	Williamsburg Green 1347-1411 Colonial Ave. Roseville	1960	6-8-73	51
12.	Cochrane Park 436 Holly - 56 Arundell St. Paul	1914	7-18-73	12
13.	Mirror Lake Condominiums 3912-4099 Foss Rd. NE St. Anthony	1972	12-26-73	148
15.	River Drive Condo 200 N. River or Mississippi River Blvd. St. Paul	1962	5-22-74	20

H.O. #	CONDOMINIUM	YEAR BUILT	DATE RECORDED	# OF UNITS
17.	Summit Court Condo 442 Summit & 11 Summit Court St. Paul	1898	9-4-74	16
18.	Bonaventure Condominium 3090 Lexington Pkwy. No. Roseville	1973	12-13-74	30
19.	F. Scott Fitzgerald 477-481 Laurel St. Paul	Pre-1900	5-22-75	12
20.	Firenze Condominiums 117 Mackubin St. Paul	1900	11-20-75	9
21.	McConville-Stewart 933 Lincoln Ave. St. Paul	Pre-1950	10-29-75	2
22.	The Dayton Ave. Rowhouses 568-574 Dayton St. Paul	1904	5-7-76	4
23.	The Phoenix Condominium 528 Ashland St. Paul	1896	9-23-76	6
24.	Laurel Flats 434-438 Laurel & 120 Arundel St. Paul	1897	9-12-76	13
25.	Fillmore and Walter Condo 30-42 S. St. Albans St. Paul	1906	11-18-76	12
26.	St. Albans Court Condo 20-28 N. St. Albans St. Paul	1911	6-29-77	8
27.	Nathan Hale Condo 387-389 Portland St. Paul	Pre-1900	9-1-77	2

H.O. #	CONDOMINIUM	YEAR BUILT	DATE RECORDED	# OF UNITS
28.	Elm Tree Condominium 91-93 Kent St. Paul	1901	9-6-77	6
29.	Oak Tree Condominium 87-89 Kent St. Paul	1901	9-6-77	6
30.	Hawthorn West Condo 599 Laurel St. Paul	1901	10-17-77	6
31.	North Western Condo 102 N. Western St. Paul	1907	10-25-77	4
32.	Riverridge 334 Cherokee Ave. St. Paul	1964	12-30-77	42
33.	Lincoln Avenue Condo 666 Lincoln Ave. St. Paul	1914	1-12-78	7
34.	Avon Place Condo 51-57, 63 S. Avon St. Paul	1904	1-31-78	19
35.	Sutton Place 697-703 Laurel St. Paul	1892	3-23-78	20
36.	St. Albans Place Condo 24 S. St. Albans St. Paul	1901	6-1-78	6
37.	The Fairmont Condo 126-134 S. Victoria St. Paul	1921	7-6-78	8
38.	Summit Ave. Condo 345 Summit Ave. St. Paul	1909	8-2-78	3

H.O. #	CONDOMINIUM	YEAR BUILT	DATE RECORDED	# OF UNITS
40.	Clairwood Condo 807 St. Clair & 806 Linwood St. Paul	1915	8-4-78	11
41.	Hamline House Condo 2800 Hamline Ave. N. Roseville	1969	8-9-78	150
42.	The Hawthorn-East Condo 593 Laurel St. Paul	1901	8-15-78	6
43.	Elgin Condo 180-184 Kent St. Paul	1900	9-1-78	6
44.	Kenesaw Condo 504 Selby St. Paul	1904	9-8-78	10
45.	Montrose Court Condo 111, 113, & 115 N. Western St. Paul	1900	9-22-78	9
47.	Kenilworth Condo 223 Arundel St. Paul	1895	10-18-78	6
48.	Kirkwood Condo 735 Laurel St. Paul	1890	12-8-78	4
49.	Ashmar Condo 586 Ashland St. Paul	1888	12-8-78	4
51.	Marshall Place Condo 451 Marshall Place St. Paul (see 52)	1895	1-22-79	12
52.	447 Marshall Place Condo 447 Marshall Place St. Paul (see 51)	1895	1-22-79	

H.O. #	CONDOMINIUM	YEAR BUILT	DATE RECORDED	# OF UNITS
53.	Woodland Park Condo 464-468 Dayton St. Paul	1903	3-16-79	13
54.	Summit Condo 456 Summit St. Paul	1966	4-4-79	23
55.	Pike Lake Manors Condo 1453, 1476-2150 14th St. NW New Brighton	1965	4-9-79	54
56.	The Dayton Condo 617 Dayton St. Paul	1916	5-9-79	5
57.	Midland Grove Condo 2210-2250 Midland Grove Rd. Roseville	1969	6-4-79	174
58.	O'Halloran House Condo 460 Marshall St. Paul	1895	6-26-79	4
59.	Lauer Flats Condo Western, 7th, St. Clair St. Paul	Pre-1950	8-31-79	21
60.	Gardner Row Condo 89-97 Leech St. St. Paul	1891	9-17-79	5
61.	Iglehart Condo 444 Iglehart St. Paul	1886	9-20-79	4
62.	Elmwood Condo 235-237 Arundel St. Paul	1894	9-25-79	6
63.	Lake Josephine Apts. 3076 N. Lexington Ave. Roseville	1969	10-10-79	23
64.	River Road Condo 404 N. Mississippi River Blvd. St. Paul	1926	10-17-79	3

H.O. #	CONDOMINIUM	YEAR BUILT	DATE RECORDED	# OF UNITS
65.	Geneva Flats 110 N. St. Albans St. Paul	1892	10-19-79	6
66.	Executive Manor 3153 Old Highway 8 Roseville	1967	10-3-79	72
67	Chatsworth Condo 215 S. Chatsworth St. Paul	1922	11-5-79	6
68.	Kent Square West Condo 551-555 Selby St. Paul	1885	11-15-79	9
69.	Cathedral Place Condo 220 Marshall Ave. St. Paul	1884	11-19-79	8
70.	Ashland Manor Condo 1540 Ashland St. Paul	1917	11-21-79	21
72.	Benjamin Commons 764 Dayton St. Paul	1913	12-19-79	4
73.	Panama Flats South 234 S. Exchange St. Paul	1886	12-19-79	10
74.	Canabury Square 120, 122, 130, 132 Demont Little Canada	1973	12-21-79	236
76.	Ashland Condo 436 Ashland St. Paul	1885	12-28-79	6

RAMSEY COUNTY UNRECORDED CONDOMINIUMS

H.O. #	CONDOMINIUM	YEAR BUILT	YEAR OF CONVERSION	# OF UNITS
101.	Woodland Terrace 464-8 Dayton St. Paul	1903	1976, 78, 79	5
102.	Ramsey Terrace 333-349 Ramsey St. Paul	1890	1978	10
103.	Mackubin Row 71-79 Mackubin St. Paul	1887	1978, 79	6
104.	Summit Place 140 Farrington St. Paul	1977	1979	3
105.	Kenosha 505 Selby St. Paul	1905	1979-80	14
117.	Fleur Royal 179-181 & 183 Little Canada Rd. St. Paul		1979	117
			TOTAL	1712

HENNEPIN COUNTY RECORDED CONDOMINIUMS

H.O. #	CONDOMINIUM	YEAR BUILT	DATE RECORDED	HOP IV	# OF UNITS
1.	Wilhite Apts. 2733 Girard Ave. So. Minneapolis	1922	8-9-70		18
4.	The Yorker 6400 York Ave. Edina	1969	3-6-72		84
5.	Edina-Brookside 4380 Brookside Court Edina	1966	9-11-72		43
6.	26 Arthur Ave. SE (Prospect Park) Minneapolis	1970	11-9-72		12
8.	Seahorse 5430 3 Points Blvd. Mounds	1964	10-20-72		108
9.	Briarwood Apt. 2300 Unity Ave. Golden Valley	1960	12-18-72		53
10.	Chateau Minnaqua of Edina 6415 York Ave. So. Edina	1967	4-13-73		14
17.	3824-26 W. Lake Calhoun Pkwy. Minneapolis	1964	6-73		2
19.	Prospect Park 1821 Franklin Ave. SE Minneapolis	1910	9-14-73		6

H.O. #	CONDOMINIUM	YEAR BUILT	DATE RECORDED	HOP IV	# OF UNITS
21.	Hampshire House 2309 Hampshire Ave. So. St. Louis Park	1972	6-27-73		13
22.	Lynwood 4516 State Hwy. 7 St. Louis Park	1965	10-31-73		12
23.	River Towers 15 So. 1st St. Minneapolis	1964	6-15-73		500
41.	Greensboro 7316-7414 W. 22nd St. 7207-7453 Franklin Ave. W. 2004-2040 Louisiana Ave. S. St. Louis Park	1969	7-18-74		260
43.	York of Edina 6450 York Ave. So. Edina	1967	2-15-74		80
46.	3810-12 W. Lake Calhoun Pkwy. Minneapolis (see 47 & 48)	1964	8-19-74		6
47.	3814-16 W. Lake Calhoun Pkwy. (see 46)	1964			
48.	3820-22 W. Lake Calhoun Pkwy. (see 46)	1965			
50.	231-9 26th Ave. NE Minneapolis	1971	2-11-75		5
67.	4360 Brookside Ct. Edina (see 70 & 71)	1969	8-15-75		189

H.O. #	CONDOMINIUM	YEAR BUILT	DATE RECORDED	HOP IV	# OF UNITS
70.	4370 Brookside Ct. (see 67)	1967			
71.	4350 Brookside Ct. (see 67)	1968			
72.	Bassett Creek 1336 Edgewood Ave. No. Golden Valley	1965	2-26-76		12
73.	Parklawn East & West 4351,4401,4480 Parklawn Ave. Edina	1968	12-18-75		59
75.	1832-34 Buchanan St. NE Minneapolis	1967	1-26-76		2
77.	Sagamore 10750 Rockford Rd. Plymouth (see 82, 90)	1976	1-21-77		180
82.	Sagamore 1 (see 77)				
83.	Westwood Villa 2200 Nevada Ave. So. St. Louis Park	1970	1977		66
84.	Calhoun Ambassador 2928 Dean Pkwy. Minneapolis	1959	8-17-77		42
85.	Greenbriar Village 10411 Cedar Lake Rd. Minnetonka (see 93, 102, 125, 126, 127)	1975	6-21-77		462
87.	Southdale Gardens of Edina 6309 York Ave. So. Edina	1965	4-15-77		48

H.O. #	CONDOMINIUM	YEAR BUILT	DATE RECORDED	HOP IV	# OF UNITS
88.	Heatherton of Edina 4100 & 4120 Parklawn Ave. Edina	1971	8-8-77		105
90.	Sagamore 3 (see 77)				
92.	2867 James Ave. So. Minneapolis	1915	12-9-77		4
93.	Greenbriar Village #2 (see 85)		10-3-77		
94.	Valley View Estates 6201 Brookview Edina	1961	8-16-78		5
99.	7500 Cahill Rd. Edina	1972	7-3-78		207
100.	2600 & 2602 37th Ave. NE St. Anthony	1960's	1-20-78		2
102.	Greenbriar Village #3 (see 85)				
104.	Presidential Estates 2801 Flag Ave. No. New Hope (see 124)	1970	8-9-78		72
105.	Brookview Condos 9141-7 Olson Mem. Hwy. Golden Valley	1963	8-16-78		71
107.	Edina Place on York 7300-7350 York Ave. So. Edina	1973	10-3-78		140
108.	6108 Sumter Ave. No. New Hope	1971	6-28-78		6

H.O. #	CONDOMINIUM	YEAR BUILT	DATE RECORDED	HOP IV	# OF UNITS
109.	1901 Emerson Ave. So. Minneapolis	1964	6-13-78		32
111.	Sunrise Bay Estates 1304 W. Medicine Lake Dr. Plymouth	1977	1-24-79		82
113.	3527 Pleasant Ave. Minneapolis	1921	10-25-78		4
114.	Sungate I 2569 Alabama Ave. So. St. Louis Park (see 117 & 118)	1967	11-9-78		60
115.	920 25th St. E. Minneapolis	1806	3-30-79		4
117.	Sungate II (see 114)		11-9-78		
118.	Sungate III (see 114)		1978		
120.	6308 Barrie Rd. Edina	1964	2-7-79		100
124.	Presidential Estates II 2800 Hillsboro Ave. No. New Hope	1970	5-21-79		72
125.	Greenbriar Village #4 (see 85)				
126.	Greenbriar Village #5 (see 85)				
127.	Greenbriar Village #6 (see 85)				

H.O. #	CONDOMINIUM	YEAR BUILT	DATE RECORDED	HOP IV	# OF UNITS
130.	Fountain Lake 4575 80th St. Cir W. Bloomington	1973	3-29-79		120
131.	Cedarwood of Edina 4101 Parklawn Ave. So. Edina	1971	10-11-79		120
134.	Bellevue 13th & Hennepin Minneapolis	Pre-1900	12-28-79		16
135.	Harriet Place 2616 Harriet Ave. Minneapolis	1970	4-11-79	HOP	57
136.	3533 Pleasant Ave. Minneapolis	1921	3-6-79	HOP	4
138.	Hidden Park Condo 6007-6051 W. Broadway New Hope	1969	11-28-79		68
139.	910 Oliver Ave. No. Minneapolis	1921	10-9-79	HOP	4
140.	Garfield Gables 2610 Garfield Ave. So. Minneapolis	1973	5-25-79	HOP	36
143.	Pleasant Place 2717 Pleasant Ave. So. Minneapolis	1913	6-7-79		4
145.	1715 Stevens Ave. So. Minneapolis	1892	5-8-79	HOP	14
146.	Powderhorn Condo 3105 16th Ave. So. Minneapolis	1930	8-21-79	HOP	4
147.	Vermont 2716 Humboldt Minneapolis	1926	9-19-79	HOP	14

H.O. #	CONDOMINIUM	YEAR BUILT	DATE RECORDED	HOP IV	# OF UNITS
148.	2630 Pleasant Ave. So. Minneapolis	1969	8-3-79	HOP	18
149.	Aldrich 2446 Aldrich Ave. So. Minneapolis	1971	8-10-79	HOP	36
150.	Dupont Manor 2536 Dupont Ave. So. Minneapolis	1968	9-19-79	HOP	17
151.	7 Oak Condominium Homes 3412 Oakridge Rd. Minnetonka	1971	11-7-79		60
152.	Brownstone Apts. 707-709 W. 25th St. & 2500-2514 Lyndale Minneapolis	1900	7-10-79	HOP	20
153.	Calhoun Lake Homes 3100-3128 W. Lake Calhoun Pkwy. Minneapolis	1938	10-30-79	HOP	48
155.	Keystone Condo 2524 Stevens Ave So. Minneapolis	1900	12-26-79		4
158.	Ridgewood Hills 415 Ridgewood Ave. Minneapolis (see 159)	1958	11-7-79	HOP	22
159.	401 Ridgewood Ave. Minneapolis (see 158)	1959	7-31-79	HOP	
160.	Ridgewood Ave. 412 Ridgewood Ave. Minneapolis	1888	10-19-79		4
161.	504 Franklin West Minneapolis	1960	9-4-79	HOP	17

H.O. #	CONDOMINIUM	YEAR BUILT	DATE RECORDED	HOP IV	# OF UNITS
162.	Wolverton 3212 Portland Ave. So. Minneapolis	1889	7-30-79	HOP	3
163.	3133 Girard Minneapolis	1915	7-23-79	HOP	4
164.	2628 Harriet Minneapolis	1912	7-23-79	HOP	4
166.	6936 Nicollet Richfield	1960	10-25-79		4
170.	East Isles 2112 Emerson Ave. So. Minneapolis	1908	10-23-79	HOP	4
171.	Morgan Manor 501-509 Morgan Ave. No. Minneapolis	1966	9-18-79	HOP	5
173.	3 Fountains 3522 Harriet Ave. Minneapolis	1965	10-5-79	HOP	21
174.	Clinton Ct. 1718 Clinton Ave. So. Minneapolis	1915	8-16-79		8
176.	4625 Nicollet Minneapolis	1930	6-23-79	HOP	5
177.	1508 West Lake St. Minneapolis	1912	8-10-79		8
178.	Lowry Hill East 2212 Aldrich Ave. So. Minneapolis	1968	8-30-79	HOP	18
182.	3108 Bryant Minneapolis	1923	9-14-79	HOP	4

H.O. #		YEAR BUILT	DATE RECORDED	HOP IV	# OF UNITS
183.	3140 Bryant Condo Minneapolis	1916	10-23-79	HOP	4
185.	In the Park 1805 Franklin Ave. SE (Prospect Park) Minneapolis	1916	10-23-79		4
186.	5757 Sander Dr. Minneapolis	1961	11-13-79	HOP	11
187.	Fremont Plaza 3216 Fremont Ave. So. Minneapolis	1923	11-2-79		4
188.	Lake Park 2912 34th Ave. So. Minneapolis	1929	11-4-79		4
189.	Parkwood View 5725 Blake Rd. Edina	1966	12-13-79		20
190.	Parkwood Manor 6005 Eden Prairie Rd. Edina	1969	12-13-79		19
191.	2016 Portland Minneapolis	1916	10-29-79	HOP	4
192.	1800 Fourth Minneapolis	1889	11-15-79	HOP	18
208.	4456 Lake Harriet Pkwy. W. Minneapolis	1901	10-10-79		10
TOTAL					4135

HENNEPIN COUNTY UNRECORDED CONDOMINIUMS

<u>I.D.#</u>	<u>NAME AND ADDRESS</u>	<u>YEAR BUILT</u>	<u>YEAR CONVERTED</u>	<u>FINANCE</u>	<u># UNITS</u>
301	1224 Newton Ave. No.	1923	1979	HOP	4
302	2630 1st Ave. So.	1971	1979	HOP	12
303	1916 2nd Ave. So.	1888	1979	HOP	4
304	3128 4th Ave. So.	1925	1979	HOP	4
305	2210 E. 24th St.	1892	1979	HOP	4
306	17 E. 54th St.	1928	1979	HOP	6
				TOTAL	<hr/> 34

HOP IV (fourth annual Home Ownership Program)

CITY OF MINNEAPOLIS BELOW MARKET FINANCING FOR CONDOMINIUMS, 1979.

H.O.#	ADDRESS	# OF UNITS
135	2616 Harriet Ave.	57
136	3533 Pleasant Ave. S.	4
139	910 Oliver N.	4
140	2610 Garfield	36
145	1715 Stevens Court	14
146	3105 16th Ave.	4
147	2716 Humboldt S.	14
148	2630 Pleasant Ave. S.	18
149	2446 Aldrich	36
150	2536 Dupont	17
152	707-09 W. 25th St.	20
153	Calhoun Lake Homes	48
158	410-15 Ridgewood	22
161	504 W. Franklin	17
162	3212 Portland Ave. S.	3
163	3133 Girard S.	4
164	2628 Harriet	4
170	2112 Emerson Ave. S.	4
171	501-509 Morgan	5
173	3522 Harriet S.	21
176	4625 Nicollet	5
178	2212 Aldrich	18
182	3108 Bryant	4
183	3140 Bryant	4
186	5757 Sander Dr.	11
191	2016 Portland	4
192	1800 4th Ave. S.	18
301	1224 Newton Ave. N.	4
302	2630 1st Ave. S.	12
303	1916 2nd Ave. S.	4
304	3128 4th Ave. S.	4
305	2210 E. 24th St.	4
306	17 E. 54th St.	6
TOTAL		450

RAMSEY COUNTY COOPERATIVES

I.D. #	ADDRESS	YEAR BUILT	DATE CONVERTED	# OF UNITS
1.	393-399 Eichenwald St. St. Paul	1892	1978	4
2.	123-127 Lexington Parkway So. St. Paul	1921	1951	18
3.	647 Lincoln Ave. St. Paul	1904	1959	5
4.	500 Grand Ave. (Grand Hill) St. Paul		1955	7
* 5.	Shoreview Estates Condominium 4045 Hodgson Rd. Shoreview (Clustrominium)		1978	71
6.	525 Ashland Ave. St. Paul	1887	1976	4
* 7.	Hillendale Meadow Lark Ridge Eagan (Clustrominium)	1975	1980	100
			TOTAL	209

* Clustrominiums are cooperatives, but marketed as "condos."

HENNEPIN COUNTY COOPERATIVES

I.D. #	COOPERATIVE	YEAR BUILT	DATE RECORDED	# OF UNITS
1.	510 Groveland Assoc. Minneapolis	1927	3-13-68	48
2.	717-19 19th Ave. So. Assoc. Minneapolis	1900	3-2-69	4
3.	Clearview Coop 1220 Powderhorn Terrace Minneapolis	1915	4-15-70	19
4.	Wellington Apts. Coop 1303-11 Yale Place Minneapolis	1903	3-12-69	25
5.	1524 LaSalle Coop Minneapolis	1919	3-13-68	26
6.	1907-09 11th Ave. So. Assoc. Minneapolis	1916	3-11-68	4
7.	So. Aldrich Apts., Inc. 2007-09 Aldrich Ave. So. (2) Minneapolis	1913	1970	13
8.	Hillcrest Apts., Inc. 2009 Harriet Ave. Minneapolis	1921	1969	9
9.	2309 Grand Ave. Assoc. Coop Minneapolis	1919	1969	19
10.	Ansonia Apts. Coop 2407 Girard Ave. So. Minneapolis	1913	3-20-72	7
11.	Isles Coop 2536-38 Humboldt Ave. So. Minneapolis	1908	1969	7
12.	2615 Park Ave. Assoc. Minneapolis	1929	4-5-68	112
15.	Royal Apts. Coop 3340 Blaisdell Minneapolis	1924	4-8-68	8
16.	3346 Blaisdell Assoc. Minneapolis	1924	4-8-68	8

I.D. #	COOPERATIVE	YEAR BUILT	DATE RECORDED	# OF UNITS
17.	3528 Emerson Ave. So. Coop Minneapolis	1924	4-20-69	9
18.	3540 James Ave. Inc. Minneapolis	1963	4-20-74	15
19.	3701 Grand Ave. Assoc. Minneapolis	1922	4-18-74	10
20.	Colonial Ct. Apts. Inc. (2) 3909 Aldrich Ave. So. Minneapolis	1913	6-19-70	17
24.	4311 Minnehaha Ave. So., Inc. Minneapolis	1924	7-9-76	4
25.	3652-54 Lyndale Ave., Inc. Minneapolis	1915	9-9-76	4
26.	Park Cooperative Apts. (LE)** 619-625 E. 32nd St. Minneapolis	1898	9-6-78	13
27.	Moya Mwanzo Coops, Inc. (LE)** 1230 Morgan Ave. No. Minneapolis	1917	9-28-79	4
32.	2317 Bryant Ave. So. Minneapolis	1912	1977	6
* 33.	Riverview Tower 1920 So. 1st St. Minneapolis (Clustrominium)	1972	1979	206
* 34.	Oak Ridge Manor Co. Rd. 18 & T.H. 7 Minnetonka (Clustrominium)		1979	44
35.	3201 Bloomington Ave. Minneapolis		late 1940s	4
36.	1915 2nd Ave. So. Minneapolis		late 1940s	20
37.	3306 Humboldt Ave. So. Minneapolis		late 1940s	4
38.	3756 18th Ave. So. Minneapolis		1948	4

* Clustrominiums are cooperatives, but marketed as "condos."

** (LE) = Limited Equity

I.D. #	COOPERATIVE	YEAR BUILT	DATE RECORDED	# OF UNITS
39.	Whittier School (LE)** 26th & Blaisdell Ave. Minneapolis		1979	45
40.	Old Town in Town (LE)** 726-733 E. 16th St. Minneapolis		1979	55
41.	3450 Portland (LE)** Minneapolis		1979	11
			TOTAL	<u>784</u>

** (LE) = Limited Equity

NEW CONDOMINIUMS AND COOPERATIVES *

IN

HENNEPIN COUNTY

RAMSEY COUNTY

*NOTE: New condominiums and cooperatives identified in Carver, Dakota, Scott and Washington Counties were totals derived from Metropolitan Council tabulations (Assessors Offices) and are not included in this inventory.

HENNEPIN COUNTY RECORDED CONDOMINIUMS

H.O.#	CONDOMINIUM	DATE RECORDED	# OF UNITS
2.	Lanterns of Edina 51st & Hallifax Edina	9-24-71	44
3.	Bay Shore Manor 401 Lake St. Excelsior	5-12-72	20
7.	Zarathan No. 2660-2668 Zarathan Ave. St. Louis Park (See 14 & 20)	10-31-72	32
11.	Fairway Wood 14314 Fairway Dr. Eden Prairie (See 15)	12-7-72	40
12.	Concept 21 7241-7265 Brunswick Ave. N. Brooklyn Park	2-12-73	56
13.	Woodstock Condo 7500 Old Shakopee Rd. Bloomington (See 27,35,57,81,165)	6-22-73	161
14.	Zarathan Central (See 7)	4-13-73	
15.	Fairway Condo #2 (See 11)	6-6-73	
16.	Stonybrook 6408-83rd Brooklyn Park (See 28,33,39,62)	4-18-73	208
18.	Chelsea Woods 1808 Yuma Lane Plymouth (See 25,30,31,37,38,40,42,52-6, 64-6,68,69)	6-27-73	96
20.	Oak Ridge Trail (See 7)	4-13-73	

H.O.#	CONDOMINIUM	DATE RECORDED	# OF UNITS
25	Chelsea Woods (See 18)	6-22-73	
27.	Woodstock #2 (See 13)	8-24-73	
28.	Stonybrook (See 16)	9-7-73	
29.	Edina West 6074 Lincoln Dr. Edina	12-18-74	162
30.	Chelsea (See 18)		
31.	Chelsea (See 18)		
33.	Stonybrook #3 (See 16)		
35.	Woodstock (See 13)		
36.	3033 E. Lake Calhoun Pkwy. Minneapolis	11-30-73	9
37.	Chelsea Woods (See 18)		
38.	Chelsea Woods (See 18)		
39.	Stonybrook (See 16)	12-14-73	
40.	Chelsea (See 18)		
42.	Chelsea (See 18)	4-19-74	

H.O.#	CONDOMINIUM	DATE RECORDED	# OF UNITS
44.	Ridgewoods 8952 Neill Lake Rd. Eden Prairie (See 80)	4-24-75	70
45.	Lochmoor 5120 W. 102nd St. Bloomington (See 61)	7-19-74	100
51.	3801-9 45th St. E. Minneapolis	10-7-74	5
52.	Chelsea (See 18)		
53.	Chelsea (See 18)		
54.	Chelsea (See 18)		
55.	Chelsea (See 18)		
56.	Chelsea (See 18)		
57.	Woodstock (See 13)		
58.	Blake Ridge A Edina (See 59, 60)	7-17-75	20
59.	Blake Ridge B (See 58)		
60.	Blake Ridge D (See 58)		
61.	Lochmoor II (See 45)	7-1-75	

H.O.#	CONDOMINIUM	DATE RECORDED	# OF UNITS
62.	Stonybrook (See 16)		
64.	Chelsea (See 18)		
65.	Chelsea (See 18)		
66.	Chelsea (See 18)		
68.	Chelsea (See 18)		
69.	Chelsea (See 18)		
76.	White Hall 6105 Whitehall Rd. Edina	8-30-76	32
78.	Girard Park West 8441 Irwin Rd. Bloomington (See 91)	10-20-76	120
79.	Point of France 6566 France Ave. S. Edina	8-23-76	150
80.	Ridgewoods (See 44)	10-11-76	
81.	Woodstock V (See 13)		
86.	York Condo (York Plaza) 7200 York Ave. Edina	8-15-77	122
89.	Strawberry Commons 7400 N. 72nd Lane Brooklyn Park (See 119)	12-6-77	230

H.O.#	CONDOMINIUM	DATE RECORDED	# OF UNITS
91.	Girard Park East (See 78)	10-30-77	
95.	Lake Point 2950 Dean Pkwy. Minneapolis	5-17-78	107
97.	6100 Blake Ridge Rd. Edina	2-28-78	10
101.	1200 on the Mall Minneapolis (See 128)	2-10-78	282
103.	5545 Chicago Minneapolis	5-24-78	27
106.	Galaxy 8800 Aldrich Ave. S. Bloomington (See 197)	5-5-78	28
110.	Wayzata Place 520 Indian Mound E. 521 East Lake St. Wayzata	10-5-79	35
112.	Gleason No. 16605 13th Ave. N. Plymouth	2-28-79	4
116.	Neill Lake 9026-9056 Neill Lake Rd. Eden Prairie (See 180,207)	6-5-79	46
119.	Strawberry Commons (See 89)	11-24-78	
121.	9600 Portland Ave. Bloomington	12-27-78	66
123.	Wynmoor 3200 Virginia Ave. S. St. Louis Park	3-16-79	57

H.O.#	CONDOMINIUMS	DATE RECORDED	# OF UNITS
128.	Tower of 1200 on the Mall (See 101)	3-21-79	
132.	Twin Fountains 300 Shelard Park St. Louis Park	2-23-79	88
133.	Isles Condo 1717 The Mall Minneapolis	11-30-79	56
137.	St. Albans Mill 3000 St. Albans Mill Rd. Minnetonka	9-14-79	45
141.	Twin Lake North 4710 58th Ave. N. Crystal	10-4-79	66
154.	Golf Vista Edgewood 7292 Mitchell Rd. Eden Prairie (See 169,195,198,204)	7-24-79	56
165.	Woodstock Condo (See 13)	9-19-79	
169.	Golf Vista Dunwood 7264 Mitchell Rd. Eden Prairie (See 154)	10-22-79	
175.	Marsh Park 7900 Xerxes Bloomington	1-2-80	88
180.	Neill Lake Condo (Phase II) (See 116)	10-30	
194.	Loring Way Minneapolis	12-7	192
195.	Golf Vista Cedarwood 7248-7262 Mitchell Rd. Eden Prairie (See 154)	1-7-80	
197.	Galaxy X (See 106)	12-20	

H.O.#	CONDOMINIUM	DATE RECORDED	# OF UNITS
198.	Golf Vista Briarwood (See 154)	1-7-80	
204.	Golf Vista (See 154)	1-7-80	
207.	Neill Lake (Phase III) (See 116)	1-23-80	

HENNEPIN COUNTY UNRECORDED CONDOMINIUMS

H.O.#	CONDOMINIUM	YEAR	# OF UNITS
307.	Tudor Oaks	79-80	300

HENNEPIN COUNTY COOPERATIVES

I.D.#	COOPERATIVE	DATE RECORDED	# OF UNITS
14.	3200 W. Calhoun Pkwy. Inc. Minneapolis	5-1-70	23
28.	7000 Sandell Edina	1968	8
29.	7500 York Coop Edina (Elderly)	4-5-79	348
	The Chateau 425 13th Ave. S.E. Minneapolis	1973	130

RAMSEY COUNTY RECORDED CONDOMINIUMS

H.O.#	CONDOMINIUM	DATE RECORDED	# OF UNITS
3.	Maplewoods Townhouses 1709-1794 McKnight Maplewood	10-27-72	60
8.	Park Homes 132-154 Ruth St. St. Paul	3-30-73	11
11.	Canabury 2485 Canabury Dr. Little Canada	7-9-73	101
14.	Connemara I 2465-85 Lordin Lane Maplewood (See 50)	4-19-74	192
16.	Oakmont Condominium 135 Viking Dr. E. Little Canada	8-22-74	74
46.	Panama Flats Condo 6-16 Irvine Park St. Paul	10-3-78	24
50.	Connemara II (See 14)	1-12-79	
71.	Canabury Pond 175 E. County Rd. B2 Little Canada	12-31-79	84
75.	The Wilder Park Condo 1105-1186 Edgecumbe 1164-1178 St. Clair St. Paul	12-21-79	283

RAMSEY COUNTY UNRECORDED CONDOMINIUMS

<u>H.O.#</u>	<u>CONDOMINIUM</u>	<u>YEAR</u>	<u># OF UNITS</u>
112	624 Dayton Ave. St. Paul	1979	8

RAMSEY COUNTY COOPERATIVES

<u>H.O.#</u>	<u>CONDOMINIUM</u>	<u>YEAR</u>	<u># OF UNITS</u>
	Wilder Square 750 N. Milton St. Paul	1969	163

CURA
RESOURCE COLLECTION



CENTER FOR URBAN AND REGIONAL AFFAIRS

313 Walter Library
University of Minnesota
Minneapolis, MN 55455
(612) 373-7833