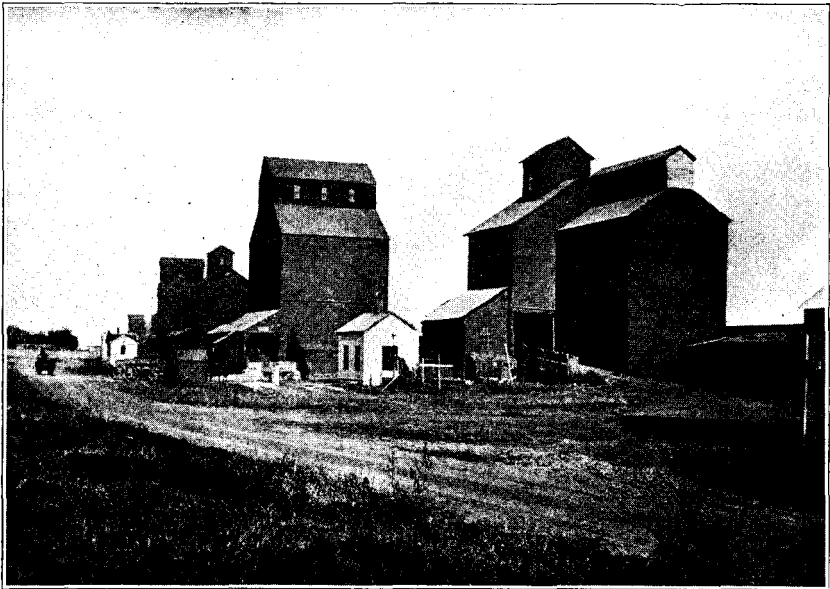


SCHOOL OF AGRICULTURE

—oOo—

A COURSE IN LOCAL GRAIN ELEVATOR MANAGEMENT

Opportunities on the home farm do not exist for all farm boys. However, many of these young men appreciate that the best thing for them to do is to prepare for some business where their farm experience can be used to advantage. Local grain marketing offers an opportunity of this kind.



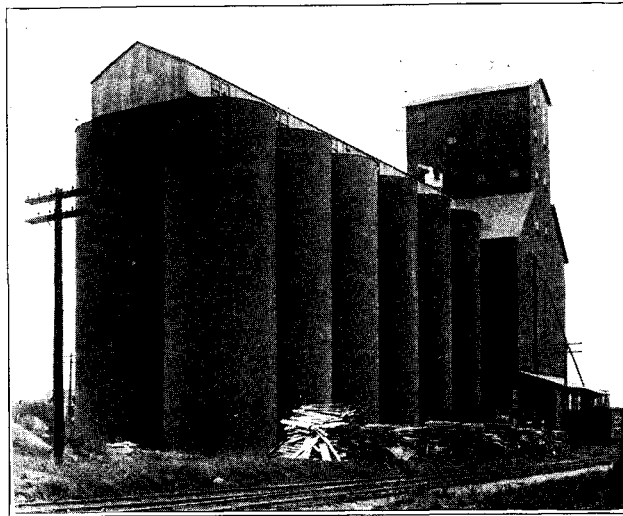
Typical Country Grain Market in Minnesota

UNIVERSITY FARM, ST. PAUL, MINN.

GRAIN ELEVATOR MANAGEMENT COURSE

There is now organized in the School of Agriculture a course which offers opportunity to farm boys who wish to enter the local grain business. It is adapted to the needs of young men in the local elevator business, and prepares them to assume leadership in the social and economic life of the community. It not only gives instruction as to how to do things, but reasons for doing them in the ways advised.

The field of opportunity for young men who have received this training is among the hundreds of local grain markets and the 5000 country grain elevators in the territory tributary to Minneapolis and Duluth, and in the terminal grain markets themselves. Special training is given in the management problems of local elevators. Study is also made of the problems of agriculture underlying the local grain business.



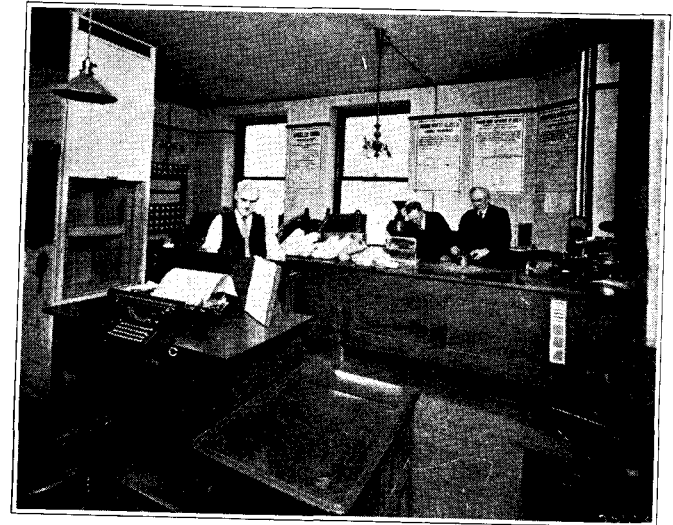
Terminal Grain Elevator

Many local farmer, independent, and line elevators are looking for assistants who have a training similar to that received by graduates from this course. Salaries for such positions are generally from \$75 to \$100 per month. Successful grain dealers consider the work of these positions as excellent training for the more responsible position of manager of a local elevator. Many of them attribute their later success to their early experience in a country elevator, and now look to the country markets for new recruits in their business.

ENTRANCE REQUIREMENTS FEW AND SIMPLE

Students who have finished the studies required in rural schools, or who have completed the eighth grade work in city or village schools and have had six months farm experience, may be admitted to the School of Agriculture without examination. Adult students who have not the required entrance certificates may be given instruction in the School in subjects that they show an ability to master, but before graduation all entrance conditions must be removed. Those who are under seventeen years of age are not admitted unless they have completed one year of high school work. Other exceptions are printed in the official bulletin of the School.

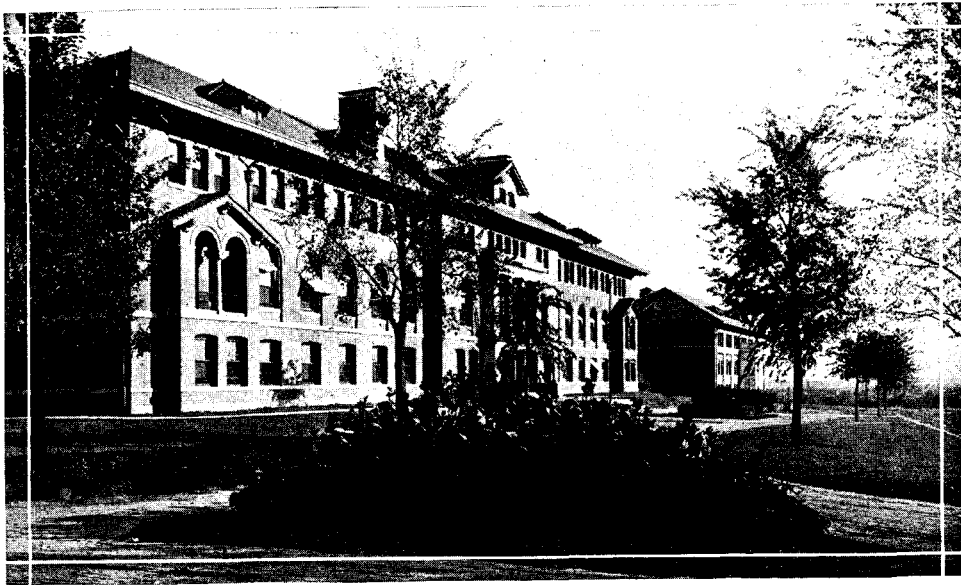
These few simple requirements for admission leave the doors open wide for young men who wish to obtain a business training.



State Board of Grain Appeals at Work

SCHOOL IS IN COUNTRY AND CITY

Where is this gateway to splendid opportunity? It is both in the country and in the city. It is at University Farm, midway between Minneapolis and St. Paul, about a fifteen-minute walk from the Como-Harriet interurban electric line. Students may reach it from either city by taking a Como-Harriet or Como-Hopkins car to Eustis Street and an Inter-Campus car direct to University Farm. The location of the school gives all the advantages of the fresh air and quiet life of the country, and it is close enough to Minneapolis and St. Paul to give the benefits of metropolitan life. Students at the School see enough of the life of the cities not to be lured by its glamour



Administration Building



Class in Farm Accounts

from the wholesome life of the country, and they are far enough from the cities not to be corrupted by their evils. Moreover all the surroundings of this useful school are ideally beautiful. Even the every-day life at the school, therefore, is an education in that which is both useful and beautiful.

CONTACT WITH A GRAIN MARKET

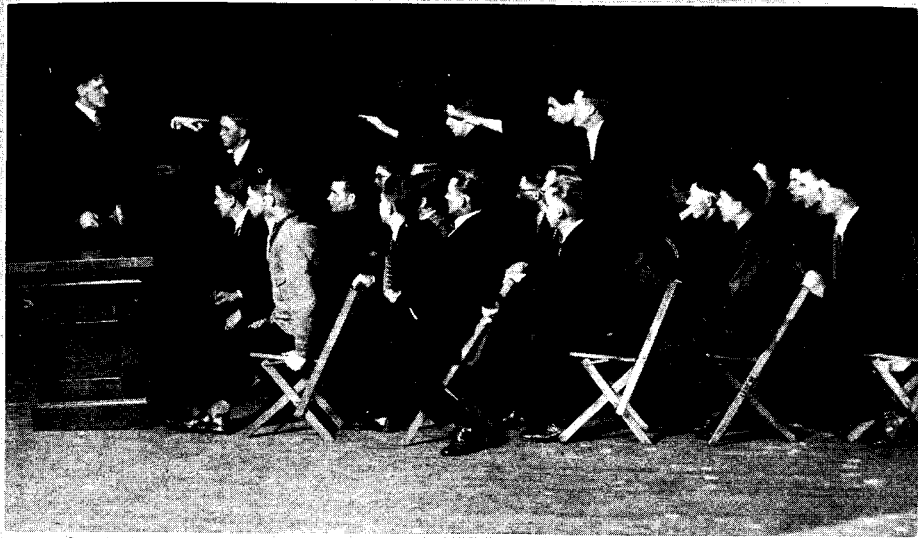
The School of Agriculture has an especial advantage in being located near the great Minneapolis terminal grain market and milling district. Grain inspection, terminal elevator operation, the commission business, the purchase and sale of "cash grain" and "futures" at the Minneapolis Chamber of Commerce, the milling of flour and feeds, and the flax seed crushing industry, can be studied at first hand by classes in grain marketing. Another valuable feature is the contact with successful men in various branches of the grain business gained through field trips.



Dairy and Engineering Buildings

WORK IS SYSTEMATIC

In these surroundings the student spends six months of each year for three years. The idea is that students shall attend the School during the six months of winter when the farm work is not pressing and that in the other six months, for at least one summer, they shall put into practice the lessons they have learned at the School, in the form of supervised project work at a local elevator. A day's work



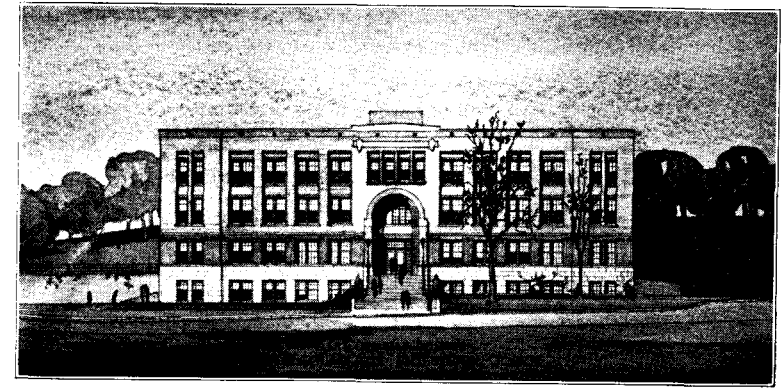
Class in Parliamentary Law



Class in Typewriting

at the school is systematically apportioned. The mornings are given largely to recitation, the afternoons to practice work, and the evenings to study.

A graduate of a high school may receive credit in subjects covered by the courses he has pursued. It is possible, therefore, for this student to finish the course of study at the School of Agriculture in two years instead of three. Or, if he prefers to be more thorough, he may so plan the work as to finish in two and a half years. Students are not, however, allowed to vary the courses of study assigned. They must take them in the order in which they are presented.



New Chemistry Building

COMPREHENSIVE COURSE OFFERED

Every important phase of the management of local elevators is considered in this course. Training in accounting, commercial law, economics, and marketing is essential as preparation for handling the business aspects of an elevator. Practice in grading and handling, as also an understanding of the use of motors, belts, pulleys, and dumps is a prerequisite to efficient buying and selling of grain and economical operation of the elevator. Such courses as feeds and feeding, farm machinery, and judging livestock prepare young men to handle the chief side lines of the local grain business. As farming becomes more diversified, this part of the elevator business grows in importance, and the success of an elevator increasingly depends upon the income from side line enterprises. Training in public speaking, parliamentary law, and other similar courses fits boys to conduct meetings and to act as farm advisors. Thus a well balanced program is offered to train farm boys for one of Minnesota's most important local market businesses.

GRAIN ELEVATOR MANAGEMENT

Course of Study

Freshman Year

Required—First Term	(f, fall term; w, winter term)	Required—Second Term	(f, fall term; w, winter term)
English I	3 credits (f,w)	English II	3 credits (f,w)
Hygiene I	1 " (f,w)	Soils	3 " (f,w)
Farm Arithmetic	3 " (f,w)	Farm Crops II	3 " (f,w)
Farm Crops I	3 " (f,w)	Advanced Farm	
Tractor and Auto Work	3 " (f,w)	Arithmetic	3 " (f,w)
Social Problems for Boys	1 " (f,w)	Farm Mechanical Training	3 " (f,w)
Gymnasium	2 " (f,w)	Gymnasium	2 " (f,w)
		Free electives, 3 credits	

Limited electives, 3 credits at least required from this group:

Agricultural Botany	3 credits (f,w)
Chemistry of Plant and Animal Life I	3 " (f,w)
Judging Types and Market Classes of Livestock	2 " (f,w)
Penmanship	1 " (f,w)

Free electives, 2 credits

Electives

Drawing and Farm Buildings	3 credits (f,w)
Judging Breed Types of Livestock	3 " (f,w)
Animal Biology	3 " (f,w)
Physiology	3 " (f,w)
Elementary Beekeeping I	3 " (f,w)
Spelling	1 " (f,w)
Plant Propagation	3 " (f,w)
Floriculture	3 " (w)
Dramatics	½ " (f,w) ²
Debating	1 " (w)
General Office Practice	3 " (f,w)
Landscape Gardening	3 " (f)
Elementary Beekeeping II	3 " (f,w)
Elements of Music I	2 " (f,w)
Elements of Music II	2 " (f,w)
Violin	½ " (f,w) ¹
Piano	½ " (f,w) ¹
Instrumental Music	½ " (f,w) ¹
Voice	½ " (f,w) ¹
Orchestra	½ " (f,w)
Chorus	½ " (f,w)
Hand	½ " (f,w)
Harmony I	2 " (f,w)
Harmony II	2 " (f,w)
Appreciation of Music	3 " (f,w)
Instrumentation and Conducting	3 " (f,w)

¹ A special fee of \$10 is charged for this course.

² Credit for this course is allowed only under the conditions specified in the booklet of Faculty Regulations.

Junior Year

Required—First Term

Required—Second Term

(f, fall. w, winter)

English Classics	3 credits (f,w)	Business English	3 credits (f,w)
Feeds and Feeding	3 " (f,w)	Seed Testing	2 " (f,w)
Bookkeeping	3 " (f,w)	Co-operative	
Commercial Law	3 " (f,w)	Accounting	3 " (f,w)
Gymnasium	2 " (f,w)	Elementary Economics	3 " (f,w)
Limited Electives, 3 credits at least required from this group:		Parliamentary Law	1 " (f,w)
Farm Buildings	3 credits (f,w)	Plant Pests	3 " (f,w)
Mechanics and Water Supply	3 " (f,w)	Gymnasium	2 " (f,w)
Typewriting I	3 " (f,w)	Free electives, 3 credits	

Free electives, 3 credits

Electives

Advanced Livestock Judging	3 credits (f,w)	Heat and Electricity	3 credits (w)
Dairy Stock Judging	2 " (f,w)	Incubating and Brooding	3 " (w)
Farm Horticulture	3 " (f,w)	Tractor and Auto Work II	3 " (f,w)
Farm Dairying	3 " (f,w)	Commercial Vegetable Gardening	3 " (w)
Poultry	3 " (f,w)	Veterinary Studies	5 " (w)
Algebra I	7 " (f,w)	Weeds	2 " (f)
Geometry I	7 " (f,w)	American History	3 " (f,w)
Industrial History	3 " (f,w)	Forest Nursery Methods and Tree Planting	3 " (w)
Management of Laying Flock	1 " (f,w)		
Physiology and Hygiene of Breeding	2 " (f,w)		
Orchard Fruit Growing	3 " (f)		
Small Fruit Growing	3 " (w)		
Elements of Bacteriology	3 " (w)		
Potato Production	3 " (w)		
Advanced Beekeeping	3 " (f,w)		
Dairy Stock Judging	2 " (f,w)		
Stock Judging Practice	3 " (f,w)		
Land Clearing	3 credits (w)		
Greenhouse Construction and Management	3 " (f)		
Special Problems in Horticulture	(w)		
Algebra II	7 " (f,w)		
Geometry II	7 " (f,w)		
Meats	3 " (f,w)		
Chemistry of Plant and Animal Life II	3 " (f,w)		

Senior Year

Required—First Term

Required—Second Term

Public Speaking	3 credits (f,w)	English VI	3 credits (f,w)
American Government	3 " (f,w)	Crop Breeding	3 " (w)
Farm Management I	3 " (f,w)	Farm Management II	3 " (f,w)
Grain Marketing I	3 " (f,w)	Cereal Technology	3 " (w)
Grain Inspection	3 " (f,w)	Grain Marketing II	3 " (w)
Gymnasium	2 " (f,w)	Gymnasium	2 " (w)
Electives, 3 credits		Electives, 3 credits	

Electives

Rural Sociology	3	credits (f,w)
Livestock Breeding	3	" (f,w)
Livestock Feeding and Management	3	" (f)
Dairy Stock Feeding	3	" (f)
Drainage and Roads	3	" (f)
Farm Implements	3	" (f)
English Literature I	5	" (f)
Advanced Public Speaking	3	" (f,w)
Plant Diseases	3	" (f)
Rural Economics	3	" (f,w)
Milk Production	3	" (w)
English Literature II	5	" (w)
Dairy Stock Selection	3	" (w)
Judging and Grading Farm Crops	3	" (w)

For Full Information Regarding the School of Agriculture Write

PRINCIPAL D. D. MAYNE

University Farm

St. Paul, Minn.