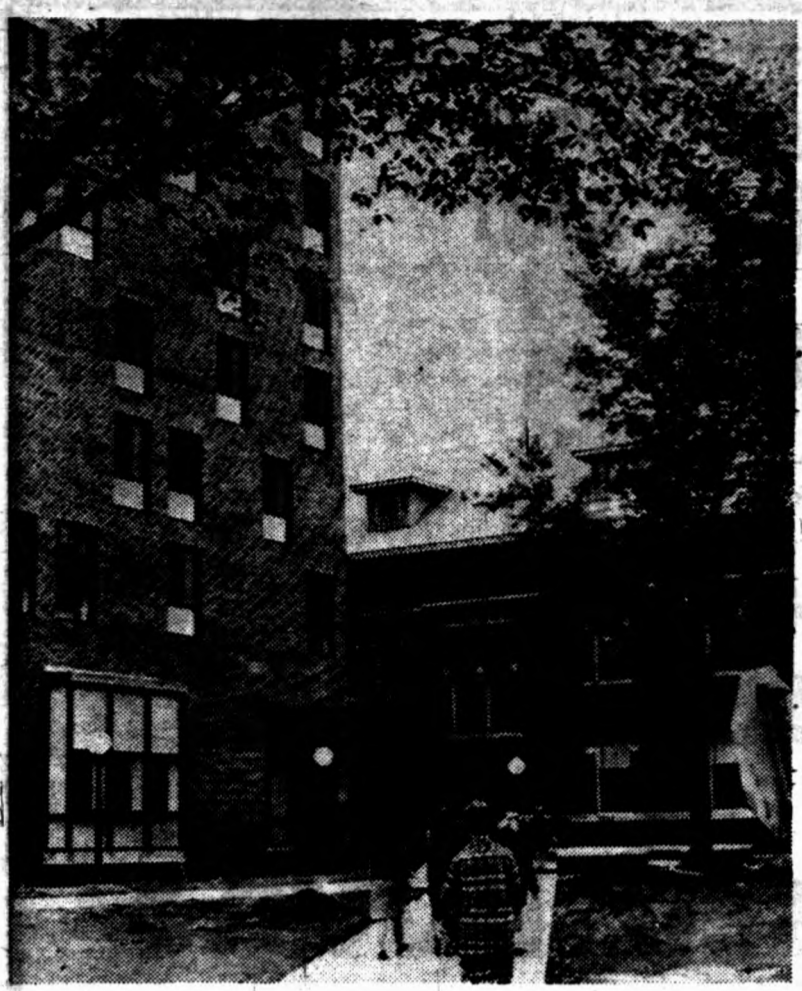


MINNESOTA HISTORICAL SOCIETY

Minnesota Daily

An Independent Student Publication

Volume 68 Minneapolis - St. Paul, Minnesota — Tuesday, September 27, 1966



What a home!

The march to Sanford Hall is much more pleasant this year for the lucky coeds living in Sanford's new tower. Finishing touches on the addition are just being completed, and a formal open house will be held during the Thanksgiving holiday.

Stanford addition:

Plush new Tower gets coeds' sighs

Three coeds sprawled luxuriously on the wall-to-wall carpeting in a room of the new \$1.18 million Sanford Tower to discuss the merits of the new dormitory. Comments were invariably ecstatic. "It's beautiful. It's just lovely." "I LOVE IT. It's so new and clean and cheerful."

"Before I came up here, I said to myself, 'I hope I get into that new dorm. It looks so cool.' Well, here I am and I just love it."

The new dormitory consists of a 9-story tower attached to the older Sanford Hall, with eight resident floors, including a lounge and kitchenette for each floor (or house) of 32 women. There is a resident counselor on each floor.

The main floor includes public and private lounges and office facilities for a receptionist.

There are two elevators. About 240 women will occupy the structure.

Individual rooms may be singles, doubles or triples. All are fully carpeted, with white walls and dark woodwork, walk-in closets include a clothes rack, shoe rack, drawer space, and lighted mirror. Each room has eight feet of fluorescent lighting on either side under a shelf.

According to one coed, "If you turn them all on it's so bright you just couldn't get it any brighter. But it's a good quality of light. It's soft."

THE BASEMENT area contains laundry and storage facilities. Plans for the basement area are somewhat indefinite. Proposals include installing vending machines and constructing a snack bar.

Pres. Marie Kittleson, CLA sophomore, had more praise.

"It's going to be so much easier for studying. The carpeting combined with the special ceiling cushions the noise between floors and helps tremendously."

The special ceiling, usually referred to as "the cartoon for giant dinosaur eggs," looks more like a huge waffle, with depressions about a foot deep. According to head counselor Betty Schriver, it functions not only to absorb inter-floor noises, but also adds "texture and variety to the decor." Sandblasted walls with a pebbled ef-

Plush new tower (Continued on Page 10)

Two counseling bureaus unite, name director

The Student Counseling Bureau and the Residence Counseling Program have been consolidated under one office, Martin L. Snoko, associate dean of students, announced last week.



Harold R. Marquardt, coordinator of the residence counseling program since 1960, has been named to head the new office under the Dean of Students. He will have two assistants yet to be named.

Mabelle G. McCullough, director of the Student Housing Bureau since 1949, has been appointed assistant Dean of Students. She succeeds R. Edith Stedman who left the University last winter to get married.

THE NEW offices will direct the counseling program in the residence halls and Greek houses

Counseling (Continued on Page 14)

Burger King in Dinkytow SEMPAC opposes building

By PAUL GRUCHOW Burger King Corp. is ready to move a drive-in food shop into the burned-out property on the corner of S.E. 14th Ave. and S.E. Fifth

St. in Dinkytown, according to Mrs. Bonnie Blackmore, executive secretary of the Southeast Minneapolis Planning and Coordinating Committee (SEMPAC).

Mrs. Blackmore said yesterday she got the information from Minneapolis Alderman Robert MacGregor.

General practice

New Med School proposal debated

The University Medical School may not be the only medical school in Minnesota if a St. Paul medical group has its way.

Based on a recent study sponsored by the Hill Family Foundation, the Northern Association for Medical Education (NAME) asked the state legislature to finance a second medical school in St. Paul.

THE REQUEST is based on the Health Manpower Study for the Upper Midwest and complaints that the University school is not providing the state with enough general practitioners.

According to the Minnesota Academy of General Practice, the Medical School is responsible for the serious shortage of family doctors through over-emphasis on specialization.

In its study the Health Manpower commission suggested the establishment of a medical school but did not indicate under what auspices it should be formed.

Robert H. Howard, dean of the Medical School, testifying before the state legislature's house appropriations sub-committee said, however, he questioned that any medical school would succeed without being associated with the University.

HE SAID THE requirements of various accrediting agencies "are such as to render it a virtual uncertainty that any medical school could be developed in Minnesota in the foreseeable future" except under the University.

In order to meet the need for Medical school (Continued on Page 14)

BUT THE OWNERS of the property, John W. Olmscheid and Julius F. Bonello, both of Minneapolis, say that they have formalized no negotiations with Burger King.

Olmscheid said he and his partner have been talking to a Burger King representative for some time, but the talk has come to nothing yet.

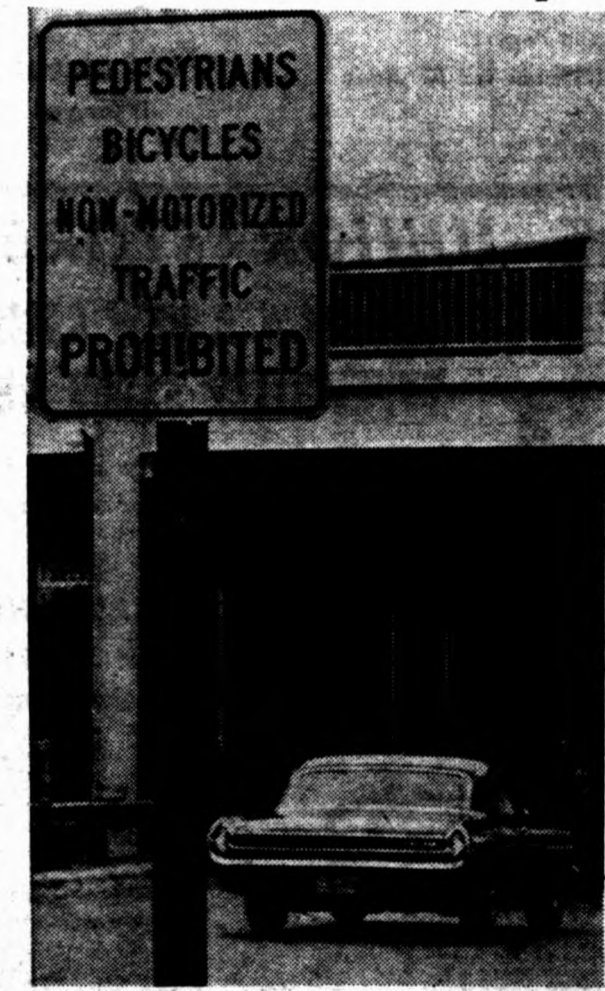
"If you find out anything," Olmscheid said in a telephone interview yesterday, "let me know, because I'd sure like to sell that property."

Olmscheid said he was aware that Burger King had applied for a food license from the City of Minneapolis, but that he didn't know what action had been taken on the application.

BONELLO SAID yesterday that he thought the license application had been approved. He added, however, that he and Olmscheid still own the property and that Burger King is only one of the several possible buyers.

Neither MacGregor nor Alfred Peterson, the man doing the negoti- (Continued on Page 3)

Police, Highway Dept., U bewildered by illegal sign



Who put it there? This sign is an orphan. Nobody will claim it. The sign is illegal since under state law bicycle riding is legal on the lower bridge. Neither the University, the city or the highway department knows where the sign originated.

By JOHN OLSON Pedestrians, Bicycles, Non-Motorized Vehicles Prohibited!

Who put up this sign at the entrance to Washington Ave. bridge? The University denies it. The Highway Dept. denies it. The Highway Dept. has jurisdiction over the bridge and the University the land around it.

ACCORDING TO STATE Highway Commissioner John R. Jamieson, the sign is illegal because it restricts bicycles. Yet the highway dept. cannot remove the signs because it has no jurisdiction over the land on which they stand.

The University Police and Plant Services deny any connection with the sign.

Recently, two University coeds cycling on the bridge were told by a University police officer that riding bicycles on the lower half of the bridge is illegal.

"According to state traffic laws, bicycles are covered as any other moving vehicle," Jamieson said, "and to restrict them is like restricting Fords or Chevrolets."

The sign, he said, cannot restrict bicycles since the bridge belongs to the highway department.

JAMIESON SAID when the bridge opened, University police had requested the posting of the signs. "We turned them down flat," he said.

This request was made by Howard Heck, staff engineer of Plant Services, on behalf of the University and University Police Chief C. B. Hanscom. "We were turned down, and naturally we were disappointed," Heck said.

The University has no authority to put the sign up but it can suggest or request traffic signs just as anyone can, Heck said.

"I've called the city officials, and they deny any connection with the placement of the sign," he said.

"The restriction is probably for the safety of the people," U Police Capt. John McDonough said. "If the sign is posted then bicycles are restricted."

"The University Police have nothing to do with the sign," he said. "Maybe Plant Services put them up."

"AS FAR AS I know, the University never put up illegal sign (Continued on Page 14)



SHOP CO-OP FIRST FOR GREATER SAVINGS
Save 25% On Used BOOKS

— NO STORE OFFERS MORE —

Largest Selection of Used Texts

SUPPLIES

COMPLETE SCHOOL SUPPLIES — RING BINDERS, SPIRALS, NOTEBOOKS, PADS
A CHECK LIST OF OUR SERVICES AND DEPARTMENTS

- Hallmark Cards for Those Who Care Enough to Send the Very Best
- P & E Post Engineering Supplies
- Stationery—U of M Imprinted and Eaton Papers
- Champion Sweatshirts, T Shirts and Knitwear for All Ages
- Adler Socks
- U of M Souvenirs—Jewelry, Mugs, Steins & Banks with U of M Seal
- Ceramic Gifts and Wood-Carved Novelties
- IF WE DON'T HAVE THE BOOK YOU WANT we'll special order it for you at no additional charge.

AT JUNIOR STORE ONLY

Typewriters

AND NOW A NEW COMPLETE SERVICE!
TYPEWRITER SALES, RENTALS, SERVICE

\$6.00 monthly rental charge on late model Royals, Smith-Corona and Portables. Up to 3 months rentals may be applied toward purchase price.

IMPROVE YOUR GRADES WITH WORK DONE ON A TYPEWRITER FROM THE MINNESOTA CO-OP JR.

MINNESOTA CO-OP Jr.

612 Washington Ave. S.E.
 (Between Harvard and Walnut)

MINNESOTA CO-OP

1501 University Ave. S.E.
 (Across from Folwell Hall)

TWIN LOCATIONS FOR BETTER SERVICE TO THE UNIVERSITY COMMUNITY

CONTRIBUTING TO EDUCATION THROUGH SERVICES AND TAXES

Dinkytown...

(Continued from Page 1)

ations for Burger King, was available for comment.

Wayne Field tried to establish a Burger King a block away at the corner of S.E. 13th Ave. and S.E. Fifth St. early last year.

The effort was dropped when community organizations, led by the Marshall High School PTA, St. Lawrence Church and SEMPAC, put up enough opposition so that a food license was denied the developers.

THE PTA ARGUED that the establishment would cause discipline problems. Marshall students are not permitted to leave the school grounds during school hours and the Burger King would have been located directly across the street from the school.

Because of the increased traffic from the new business, the PTA also argued there would be an increased hazard to the young bicycle riders attending the school.

St. Lawrence Parish, a Roman Catholic Church serving 750-1000 families in Southeast Minneapolis, objected to the proposed Burger King because they had plans to expand their facilities with a new chapel next to the drive-in. The establishment would be a serious detraction to the planned expansion, church officials said.

SEMPAC was opposed to the drive-in on aesthetic grounds. "The type of establishment proposed tends to be a garish establishment that contributes to the ugliness of an area," said one SEMPAC report.

The Burger King would also have destroyed, with its necessity for access rights, a University neighborhood greenway proposed by the committee for S.E. Fifth St. The greenway would provide a major pedestrian route to the University campus.

RATHER THAN face adverse publicity, according to SEMPAC, the developers of the Burger King dropped plans to pursue the license denial in court.

SEMPAC, Mrs. Blackmore says,

is still opposed to a Burger King in Dinkytown.

SEMPAC's president, Mrs. Cyrus P. Barnum Jr., says she doesn't know what stand SEMPAC will take on the present plans for a Burger King.

The committee will meet this morning, and the Burger King will be one of the items on the agenda. Reporters were asked to stay away.

Olmscheid said he thought Burger King had a letter of blessing from SEMPAC for the project. The proposed establishment has, he pointed out, offered to make some modifications in its standard design.

AMONG THE modifications are the use of used brick, some landscaping and the installment of striped awnings.

Mrs. Blackmore says that "of course" no letter of approval for the project was ever sent.

Don Hambergren, president of the Marshall High School PTA and superintendent of juvenile detention for Hennepin County, said that he couldn't say whether the PTA will continue its old fight against Burger King, but that he was personally opposed to its development in Dinkytown.

"These spots are prone to producing problems," Hambergren said.

Minnesota Daily

The student newspaper of the University of Minnesota, Minneapolis/St. Paul. Published daily except Saturdays and holidays during the academic year and semi-weekly during summer session by the Board in Control of Student Publications. Thomas Gagnon, President. Main offices: 10 Murphy Hall, University of Minnesota, Minneapolis 14. Editorial phone 373-3381. Business phone 373-3385. St. Paul Bureau: 254 North Hall, University of Minnesota, St. Paul 1. Phone 647-3425. Represented for National Advertising by National Advertising Service, 18 E. 50th St., New York. Printed at Commercial Press, 418 E. Third St. P.E. 6-2644. Subscription \$6 per year, \$2 per quarter. Singles 5 cents. Second class postage paid at Minneapolis.

NEWS STAFF
 City Editor Mike Anderson
 Copy Editor Paige Prillaman
 News Editor Susan Wells
 Photo Editor Greg Cummins
 Night Editor Doug Armstrong
 Ass't Night Editor Jon Halvorsen
 Ass't Night Editor Paige Prillaman
 Ass't Night Editor Susan Spiegel
 Sports Editor Tony Swan

DFL nominee fund-raiser set

A fund-raiser for Harlan Christianson, extension student and DFL-endorsed candidate for state treasurer in the November election, will be held from 8 p.m. today at the Coffeehouse Extempore, 2200 Riverside Ave.

Entertainment and food will be provided. Donations are \$2, \$1.50 for students. The money goes to the Christianson campaign. Performers will include Bill Dockens on the flamenco guitar.



RED BARN MENU

Chicken Dinner	69c
Big Barney	39c
Hamburger	15c
Fish Fillet	29c
Cheeseburger	20c
French Fried Potatoes	15c
French Fried Onion Rings	25c
Milk Shakes	25c
Soft Drinks	10c & 15c
Lemonade	10c & 15c
Coffee	10c
Barn Full of Chicken	\$1.69

RED BARN

313 Oak St. S.E.

UNIVERSITY ARTISTS COURSE *Masterpiece* SERIES 1966-1967

Forty-Eighth Season

Wednesday, October 5, 1966
JOSEPH FUCHS, Violinist

Wednesday, November 9, 1966
RIGOLETTO, Goldovsky Opera Company

Tuesday, November 22, 1966
THE VIENNA JOHANN STRAUSS ORCHESTRA

Tuesday, November 29, 1966
EMIL GILELS, Pianist

Wednesday, January 11, 1967
WILLIAM WARFIELD, Bass-baritone

Saturday, January 21, 1967
Ruth Page's INTERNATIONAL BALLET

Wednesday, February 15, 1967
BYRON JANIS, Pianist

Tuesday, February 21, 1967
VIENNA CHOIR BOYS

Wednesday, March 1, 1967
MARY COSTA, Soprano

Tuesday, March 28, 1967
THE BALLET FOLKLORICO OF MEXICO

SEASON TICKET APPLICATIONS ACCEPTED NOW!
 Main Floor: \$15.00, \$18.00, \$22.00, \$25.00
 Balcony: \$10.00, \$15.00, \$18.00, \$22.00

**NORTHROP MEMORIAL AUDITORIUM
 UNIVERSITY OF MINNESOTA**

GANT SHIRTMAKERS



McKenzie

Great Gant shirt for indoors or out. In mellow-rich shades that hold their colorings in sun or suds. The fabric: a fifty-fifty wrinkle-free blend of Orlon® acrylic and rayon. Tapered body. In distinctive plaids of brown and gold, blue and mid-blue or turkey-red and gold—all blended with olive.



MEN'S WOMEN'S
 DINKYTOWN



What makes a traditional Shetland print authentic?

Resilio
 TRADITIONAL NECKWEAR

When you select a printed Shetland tie be sure it has the characteristic soft texture and weight that makes for easy tying and a properly sized knot. Resilio Shetland prints are woven of fine soft woolsens then hand block printed in authentic paisley patterns. Perfect complement to sports jackets, tweedy suits and leisure wear. Be truly knowledgeable about traditional ties. Send for free brochure "Tiemanship". Resilio Traditional Neckwear, Empire State Building, New York, N. Y. 10001.

P.S. All Resilio Shetland prints are soft, knot easily and have authentic hand blocked patterns.

AT FITWELL MEN'S STORES, MINNEAPOLIS - CRYSTAL - ST. LOUIS PARK, MINN.

The Minnesota Daily is an independent student newspaper. The views expressed in the column below are those of the editors. Opinions elsewhere on the editorial pages are those of the students who write them.

Move over, McDonald's

The news that Burger King plans an establishment in Dinkytown is most discouraging, especially since Dinkytown already has a McDonald's.

The charm of the Dinkytown community is already threatened—in part by a group of apathetic absentee landlords, in part by an inability of the community's merchants to join in solving a crucial parking problem, in part by an exodus of many of the University's interesting people to the West Bank.

THE GREEN CONCRETE and neon lights of McDonald's are a blaring reminder of the growing crisis the Dinkytown community faces. It can hardly stand another cheap, gaudy hamburger heaven.

The Southeast Minneapolis Planning and Coordinating Committee (SEMPAC) is still opposed in principle to the development of another eating joint.

The owners of the property on which Burger King hopes to build have given SEMPAC months to find an alternative use for their expensive property.

No alternative has been found.

PART OF THE BLAME belongs to University students who have shown little interest in Dinkytown's future.

They could help save the community from Burger King by clamoring for some more satisfactory retail development; for example, the reopening of Dayton's old branch store in Dinkytown.

Great Society talk

Vice Pres. Humphrey spoke to a group of bankers and loan financiers at the Radisson Hotel Friday, and made an analogy between the poverty program and the long-sought cure for cancer.

He defended the War on Poverty against charges of waste by talking percentages, and pointing out how much medical research money is "wasted" on experiments that fail. But he said when a cure for cancer is finally found, no one is going to criticize the doctors for spending too much money.

He said the same is true of the poverty program. There is some waste, he tacitly admitted, but it is a function of experimentation, and cannot be begrudged.

At the DFL state central committee meeting Sunday he pointed to the increases for education, poverty, medicare and conservation voted by the 89th Congress and termed it "substantial progress."

In neither address did he mention the drop in the bucket this becomes when compared to the money being poured down a rathole in Vietnam. The "2½-fold increase" for education is nothing like the 20-fold increase in war expenses he didn't even mention.

It becomes a bit fatuous to defend the Great Society as if its only aspects were domestic. When the Vice President—or, better yet, the President—explains to the people where he is taking us in Asia, and how many dollars and lives he proposes to sacrifice in the process, we'll be in a better mood to listen to him pat himself on the back for medicare.

It's a sign of the times

The minor controversy over the appearance and attempts to remove the signs prohibiting bicycles on the lower deck of the Washington Ave. bridge (See story page 1) rather reminds us of a comic opera crisis in the bureaucracy.

Who put up the signs? Was it the Highway Dept., which knows the signs are illegal, or the University Police, who were refused original permission to put them up, or University Plant Services?

Will the University Police continue to enforce the illegal ruling because the signs exist, and would the courts throw out attempts to fine "violators"?

Can the Highway Dept. take down signs which are illegal, or must they wait a whole month until the Board of Regents can authorize the removal?

Will the poster of the illegal signs be found, and if so, what will happen to him or them?

Let's wait for the next exciting installment. Meanwhile, why doesn't someone surreptitiously take down the signs which were illegally posted in the first place?

American policy in Vietnam could mean war with China

(This column is an excerpt from an article in the Aug. 13, 1966 issue of *De Groene Amsterdammer*, a Dutch weekly newspaper. Translation is by Thomas Kando, graduate student in sociology.)

By W. G. WOLTERS

America is planning to continue the destruction of North Vietnam until the Hanoi government stops supporting the Liberation Front. The question is: will Peking allow North Vietnam to surrender? If the answer is no, there is a large chance that China will send in troops to prevent North Vietnam's defeat. There is some disagreement on this.

According to one version, China will do everything it can to stay out of the game. There are signs that Peking is pressuring Hanoi and the Liberation Front to switch over to a lower level of guerilla activity, to fall back to a level where the Viet Cong can maintain itself without support from the North. This would have to be done until happier days, when American troops have been withdrawn.

According to this version, China considers it unwise to allow North Vietnam's total destruction and to risk a war with America (itself). Since Peking and Hanoi are unwilling to accept peace on America's terms, a curtailment of guerilla activities is the only way to avoid an expansion of the war.

The second version is that of the French journalist and China expert Robert Guillain, expounded in "Le Monde." Guillain emphatically warns against Washington's thesis that China will remain passive if America forces Hanoi to its knees. According to Guillain it is dangerous to believe that the boundary of China's patience coincides with its political boundary.

America's goal is the destruction of the Tonkin area, and this is something which the Chinese will not tolerate. They will not allow Giap's army to be defeated because they see North Vietnam as a bastion for China's own defense. If this bastion collapses, the whole political and military balance of

Central China will be upset. South China, which is traditionally anti-Peking, will exhibit political unrest and Chiang Kai-shek will not hesitate to invade the mainland.

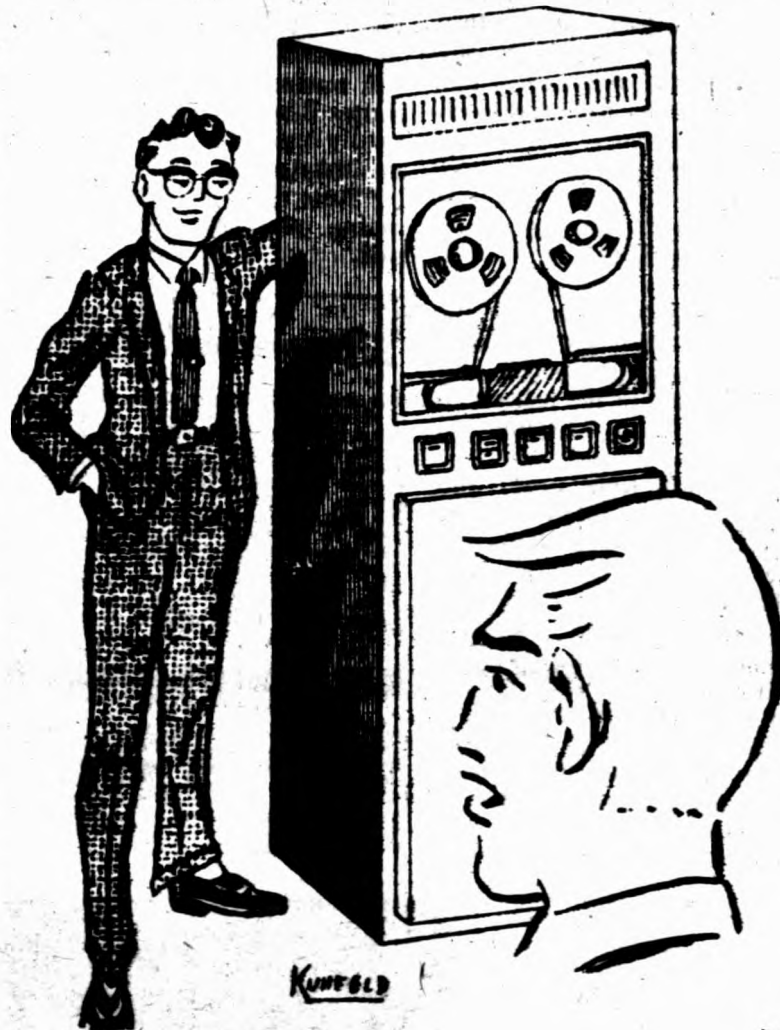
Moreover, the war in Vietnam is the test case for the Chinese conception of guerrilla warfare. Vietnam involves the most fundamental principles of Mao Tse-Tung's interpretation of Marxism-Leninism: the people's war of "Liberation" is invincible and America is a paper tiger. These principles are at the heart of the Chinese-Russian ideological conflict. They will not be abandoned lightly.

Guillain's conclusion is that China is preparing itself for war. The decision not to avoid war with the United States must already have

been taken last fall. During a military conference in Peking in January of this year, preparations were made to resist an American offense.

In February the military command in South China was reorganized and centralized. All this was accompanied by a fervent anti-imperialist campaign. The strengthening of the position of Defense Minister Lin Biao, the perpetuation of the orthodox line by means of the "cultural revolution," the renewed indoctrination and the purges, are all closely related to the expectation of war.

According to Guillain, Washington commits a serious mistake by persistently believing in China's passive attitude. During the past



Uh, Jack are you sure you understand this computer dating?

'Grew like Topsy'

Parking rates need changing

By Tom Mortenson

There must be any number of more rational and defensible bases from which to develop a parking rate structure for the University than the present system. The parking rates structure has no rationale; it has grown like Topsy without any overall guiding principles and is in desperate need of an overhaul. Its only defense for perpetuation for another year is that it has always been this way (which it has not) and that, anyway, it is too late to change it now (which in fact it is, now).

Let me note some of the discrepancies between reality and reason which exist within the present system:

1. According to data for the 1964-65 fiscal year supplied by Walter Johnson, parking facilities supervisor for the University Police Department, contract parking spaces operated by the University earned \$39 per space for the parking system while transient spaces earned \$124.

2. On the new parking lot on

the State Fairgrounds near the St. Paul Campus, full quarter parking contracts will be sold to dormitory resident students for \$5 and to commuting students for \$8 for exactly the same parking spaces.

3. In time-charge transient lots, the present rate of 25 cents for the first hour and 10 cents for each additional hour defeats the purpose of short-term, high-turnover, strategically-located, visitor-oriented facilities by encouraging long term parking. A more rational rate structure for these spaces to encourage short term parking would be 25 cents for the first hour, 50 cents for the second hour, 75 cents for the third hour, etc.

4. Regardless of where they are located, faculty-staff contract parking spaces are charged \$70 to \$80 per year, whether they be indoors or out, beyond McDonald's or adjacent to a faculty-staff office building.

The purpose of the parking facilities operated by the University is to accommodate people—as many

people as possible in the limited facilities available. To inject this rationale into the present parking rate structure and to begin to accomplish the objective of accommodating more and more people in less and less space, this author as chairman of the Student Planning Commission of MSA proposed a plan to completely readjust the day-charge transient parking rate structure to favor car pools. This plan (the only one of its type in memory) was presented to the Parking Advisory Committee in January, 1966, and was unanimously rejected by the members present. The Committee did not present an alternative, and again this fall we are stuck with the archaic, defenseless, utterly illogical hangover from the inadequacy of previous planning.

We should expect President Wilson's ad hoc Committee on Long Range Circulation and Parking Planning for the Twin Cities Campus to propose a reasonable change

(Continued on Page 5)

campus forum

to the editors:

• Greeks dying?

I think it is apparent to almost everyone that the Greeks (frats) are not dying. They are dead!

The strangest thing about it is that those within the system either don't realize this or refuse to admit it.

The fraternities have what they jokingly call the "boiler room tours." Its purpose is to discourage undesirable rushers. All rushers might change their minds about joining a fraternity if they saw the attic, boiler room, kitchen, or garbage cans of the fraternity they are interested in joining.

Some fraternities, like my own, may appear to be reviving with a

sudden burst of activity. It is only the contraction of the muscles before rigor mortis sets in.

Rick Theis
CLA junior

• Co-op misnamed

A note to new students: The Minnesota Co-op is not a cooperative; it is a retail book store that charges prices in line with all the other book stores in the area.

The only book stores that maintain any semblance of profit-sharing are the University book stores. They turn a large per cent of their profit into student scholarships. So buy accordingly.

Lewis Hyde
CLA senior

Parking rates need changing...

(Continued from Page 4)

out too much projected hindsight, we should expect parking rates to be revised generally (but not in all cases) upward. To the extent that special considerations should be paid for accordingly. And if contract parking is to be subsidized in the future as it appears to have been up until now by the transfer fall quarter, 1967. And without parking system, then the transient parking system deserves a proportional subsidy.

Certainly there are logical bases from which a defensible parking rate structure can be developed. Here are a few for consideration:

1. A graduated parking rate scale according to ability to pay would more reasonably put the supporting burden for the total parking system on faculty and staff.

2. A graduated parking rate scale favoring car pools would accomplish the objective of accommodating more people in what few spaces remain by encouraging large scale car pooling.

3. A graduated rate scale based on proximity of parking spaces to campus would preserve spaces closest to campus for faculty and staff, and would permit students a range of choices according to their ability to pay and desire for proximity to campus.

4. A graduate rate scale based on length of time parked would encourage high turnover for short term transient parkers near the heart of the campus and encourage day-long parking farthest from campus.

5. A rate scale reflecting special privileges, such as a reserved and guaranteed parking space somewhere in a particular lot, or a parking space in a heated garage, or a protected but unheated parking ramp would justify the special expenses involved in the creation and provision of such facilities.

Any one or combination of these alternatives would provide a more reasonable alternative to the present system, and their consider-

Music instructor becomes director

Jerome S. Kleinsasser, a new instructor in music, has been appointed to replace Johannes U. Dable as the director of the University Men's Glee Club and the St. Paul campus chorus.

Kleinsasser, a graduate of St. Paul Central high school, received his M.A. in music at the University.

READ THE
YELLOW PAGES
OF YOUR
STUDENT DIRECTORY

China confrontation...

(Continued from Page 4)

half year China has frequently warned that its determination should not be underestimated, and that Vietnam's interests are also China's interests. On July 22 President Liu Shao-chi said "Do not make any miscalculations," and "American imperialist aggression against Vietnam is aggression against China."

Robert Guillain fears that we are on our way to a war between China and America. His argument is more convincing than the argument that China wants to remain out of shooting range at any price.

There is a new political doctrine in the United States, Johnson's Asian policy which foresees a lasting American presence in Southeast Asia. This means decades of war between America and China.

Letter policy

Letters for this column are always welcome in 10B Murphy Hall. Students and faculty are urged to write their opinions in letter form. The only restrictions are on length and time: letters should be 300 words or less; they must be submitted before noon on the day before publication.

Washington is tempted to try to shorten this conflict by a preventive attack on China.

McNamara's statements to the effect that China will soon have long-range nuclear missiles at its disposal clearly point in that direction. America does not like long wars and wishes for rapid pragmatic solutions. It is possible that America, fancying itself to be in the right, and taking its opponent for the devil, will no longer wait for the great showdown.

Director leaves for European TV, radio study

Burton Palu, director of radio and television in the General Extension Division, is now visiting 8 European cities to accumulate final research material on a new book.

Palu will attend a conference on educational television in Berlin and will meet with radio and television program directors in Stockholm and Oslo. In Russia he will meet with members of the Radio Moscow broadcasting staff.

The basic material for his study, Radio and Television Broadcasting on the Continent of Europe, was gathered in Geneva in 1964-65.

Natural
Color
portraits from
our custom lab

KALLMAN STUDIO
1321 4th St. S.E. FE. 1-2255

Xerox Copies

As Low as
5c Per Copy

(Lowest Prices in Town)

BACHMAN
DOWNTOWN LETTER
SERVICE
603 2nd Ave. So.
FE 9-9518

U Film Society

MPLS. PREMIERE



It's Terzon vs. IBM, with the computerized world of Dr. Von Braun as the villain in this important new film by one of the world's young great directors. Eddie Constantine as Detective Lemmy Caution, alias reporter Ivan Johnson for Figaro-Pravda. Anna Karina as the rescued Natasha Van Braun.

7:30 Friday, Saturday, Museum of
Nat. History Adm. \$1

Swingline Puzzlements



[1] How far
can a dog
run into
the woods?
(Answers below)

[2] A storekeeper
had 17 TOT Staplers.
All but 3 were sold.
How many did
he have left?



This is the

Swingline Tot Stapler



98¢

(including 1000 staples)
size CUB Desk
stapler only \$1.49

No bigger than a pack of gum—but packs the punch of a big deal! Refills available everywhere. Unconditionally guaranteed. Made in U.S.A. Get it at any stationery, variety, book store!

Swingline[®] INC.
Long Island City, N.Y. 11101

ANSWERS: 1. How far can a dog run into the woods? As far as it can get. 2. A storekeeper had 17 TOT Staplers. All but 3 were sold. How many did he have left? 14.

Use Our Special
U. of M. Budget Account

National
JEWELERS
520 NICOLLET AVE

ZIPP'S LIQUORS

2618 EAST FRANKLIN

Mr. Zippy Says:

FAST SERVICE WITH
ZIPP'S
FE 6-8686

- COLD KEG BEER
- IMPORTED & DOMESTIC BEER & WINE
- ALL YOUR PARTY NEEDS

GIANT PARKING LOT FE. 6-8686

ANSWERS: 1. How far can a dog run into the woods? As far as it can get. 2. A storekeeper had 17 TOT Staplers. All but 3 were sold. How many did he have left? 14.

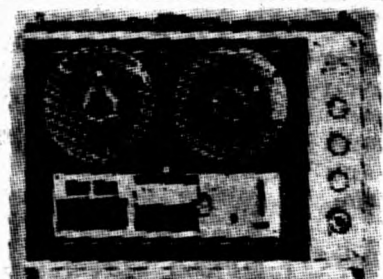


GRAND OPENING!

Sound of the Northwest features the finest in Stereo Sound Systems
REGISTER FOR FREE DOOR PRIZES

KLH

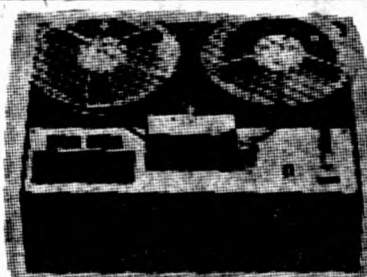
SONY SUPERSCOPE



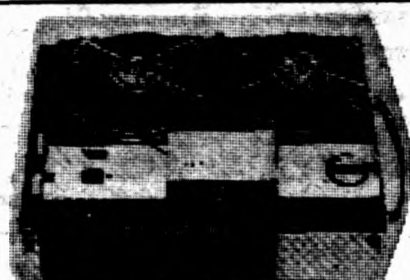
Sony Model 260
 Our Price \$229.50



Sony Model 200
 Our Price \$179.50



Sony Model 250A
 Our Price \$135.00



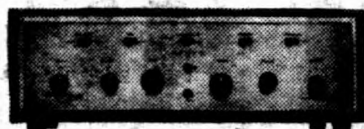
Sony Model 104
 Our Price \$99.50

SONY The leading manufacturer of Tape Recorders. The largest research and engineering staff in the world produces exceptional reliability and performance at remarkable values. Their comprehensive product line ranges in price from \$39.00 to \$700.00. And of course the famous SNW year labor and parts warranty is standard with every Sony.

SCOTT 342



342 Solid State 65 Watt
 FM Stereo Receiver
 Our Price \$259.95



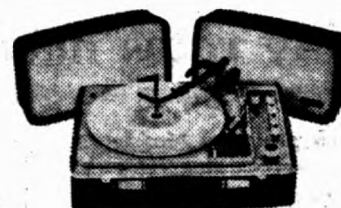
LK 72B 80 Watt Amplifier Kit
 Our Price \$124.95



344 B Solid State 85 Watt
 FM Stereo Receiver
 Our Price \$339.95

SCOTT The innovators—together with studio specialists at Sound of the Northwest proudly display and recommend the incomparable. Scott products. The most advanced circuit developments and Scott's traditional reliability provide breathtaking stereo sound.

Scott—Where Innovation is a Tradition.
 SNW—Where Value is a Tradition.



KLH Model 11
 Our Price \$199.95



KLH Model 19
 Our Price \$299.95



KLH Model 20
 Our Price \$399.95

KLH The originators of audio fidelity perfect portable and compact stereo systems. Recognized as a leader in advanced air suspension speaker design. Internationally famous for their five year labor and parts warranty. KLH and SNW, where quality and performance, value and service are our way of doing business.



Sound of the Northwest

DINKYTOWN—404 14TH AVE. S.E.
 PHONE 331-5252

ST. PAUL—242 SO. HAMLINE
 PHONE 698-8927

1/2 PRICE
 ON
 TUBES

Who can replace Wilson? Talent hunting a delicate art

(This is the second in a 2-part series discussing Pres. O. Meredith Wilson's planned resignation.)

By **MIKE ANDERSON**

Daily City Editor

"The task is one of the most important ever faced by an institution's board of trustees. The problem is intricate, and the selection process is a delicate art. Errors of judgment on the part of those making the choices can be costly in both tangible and intangible ways."

The "task" and the "problem"

mentioned above are discussed in a report issued recently by the American Council on Education (ACE) and directly related to an issue presently confronting the 12 members of the Board of Regents.

FOR THE RECENT decision by Pres. O. Meredith Wilson to leave the University in July to become director of the Center for Advanced Study in the Behavioral Sciences at Stanford, California, has started a talent hunt by the Board for a new president.

According to the ACE report, every year some 200 colleges and universities seek new presidents.

"There is no single method, no guaranteed formula for the selection of the right man. Indeed, there is no single 'right man' who will suit all colleges and universities," the report said.

IN A REPORT on how colleges select new presidents, the council said the task of replacing a college president is "one of the most difficult—finding exceptional leaders is not easy in any enterprise, be it industry, government, or academic."

"At the college or university the difficulty is often complicated if the researcher—laymen, for the most part, more at home in business or industry than in academic—are undertaking such a task for the first time in their lives."

The report continued, "Errors of judgment on the part of those making the choice can be costly,

in both tangible and intangible ways. On occasions, in the history of some colleges and universities, they have been disastrous."

AT THE UNIVERSITY the Regents are the final authorities on a successor to Wilson. However, a faculty committee and an alumni committee have been asked to advise the Regents.

No time table has been set by the Board to name the new president nor has it publicly discussed what kind of man it will seek to head the University.

HOWEVER, THE ACE study listed the following criteria among those used by colleges in naming a new president:

- Academic stature (Most schools surveyed said their president had to at least possess the doctorate degree).

- Personality traits (How well does the new man get along with the state legislature and what will his "image" be).

- "Administrative acumen."

- "A good wife."

- Religion (The heavy majority of the 116 newly-appointed presidents who responded to the survey were Protestant).

- Political affiliations.

NROTC lowers eye standards

Vision requirements for entrance into NROTC's 4-year contract program have been lowered for students majoring in science or engineering.

Major fields included are chemistry, mathematics, meteorology, and statistics. Students with visual acuity between 20/40 and 20/100 correctable to 20/20 or students with defective color perception are now eligible.

The change will help meet the increasing need for commissioned officers in the restricted line and the Civil Engineering Corps of the Naval Reserve, according to Capt. James M. Marshall, ROTC unit commanding officer.

NATIONAL ZIP CODE WEEK
OCTOBER 16th THRU 18th



ZIP CODE ALL YOUR MAIL

AUTO INSURANCE
● NEW LOW RATES
● UNDER 25
● OVER 25
"Be Sure—Insure"
with the
Arthur Gleason Agy.
4908 Viking Drive, Edina 24, Minn.
Tel. 920-5373
Free rate quotation. No obligation.

home cooked
MEALS

9.50 A Week For Women
10.50 A Week For Men

- 3 MEALS A DAY
- 6 DAYS A WEEK
- BAG LUNCHES AVAILABLE FOR NOON
- ALL YOU CAN EAT

ARROW INN
CO-OP DINING CLUB

338-5804 1209 4th St. S.E.

Have a blast!

Addition to fallout shelter sign on Classroom Bldg.: "BYOB."

GOPHER BARBER SHOP

818 Washington S.E.

Near Oak & Washington
Regular or Razor Cuts
\$2.25 331-9878

You mean,
because I'm a student
or teacher I get
special rates at all
Hilton Hotels in the U.S.?

Hilton Hotels Corporation,
National Sales Office, Palmer House,
Chicago 90, Ill.

Please send the Faculty-Student
Rate Brochure that tells all.

I am a Faculty Member Student

NAME _____

HOME ADDRESS _____ STREET _____

CITY _____ STATE _____

COLLEGE NAME _____

STREET _____ CITY _____ STATE _____

We're full of it!

Inside information on music, that is. And you can be full of it, too.

Get smart. Bone up on background. And embarrass your wisecrack friends the next time cocktail-party conversation turns to music.

Send for The Crossroads Digest of Musical Minutiae. No Beethoven-Brahms-and-Bachophile will ever bully you again.

Wise up. With this. For once in your life, would it kill you to clip a coupon? (It's even free.)



Gentlemen: I'm sick and tired of having the conversational sand kicked in my face. Rush me "POOF!—YOU'RE AN EXPERT" and I'll show the world!

NAME _____

ADDRESS _____

CITY _____

STATE _____ ZIP CODE _____

This ad is brought to you as a public service by Crossroads Records, the most exciting new name in music.

Records, P.O. Box 748
Port Washington,
New York 11050

U profs fear Viet war spread, want U.S. out of Thailand

Three University professors, disturbed by the possible spillover of the Vietnam war into Thailand, are seeking signatures to a petition which demands that the United States stay out of Thailand.

James Beck, associate professor of physiology; Joseph Rosenstein, assistant professor of mathematics; and Allan Spear, professor of history; are looking for faculty support for their position on the

Southeast Asia problem.

ACCORDING TO the petition, William Bundy, assistant secretary of state for far eastern affairs, has stated that there are 35,000 U.S. troops in Thailand—up 10,000 from a few weeks ago. The petition also outlines the clause in the Tonkin Bay Resolution which allows the President to give military aid to any SEATO nation (Thailand is one) without first getting approval from Congress.

The paper concludes that "the way is open for another costly land war in Southeast Asia, another commitment of men and material to ends which involve direct confrontation with China and, perhaps, the Soviet Union."

Beck said the petition was written because "We are now at a very tractable stage in Thailand. People say about Vietnam . . . 'we're there now, we can't do anything about it.' But the situation in Thailand can be modified quite readily by administrative decisions."

THE PETITION will be circulated among the faculty for several weeks and then will be sent to the Congressional delegation from Minnesota, the President, and the State Dept.

Copies of the statement will be available for signatures between 11:30 a.m. and 1:30 p.m. Wednesday, Thursday, and Friday at the Campus Club or from any of the men.

Russian violinist concert canceled by Soviet gov't

The scheduled appearance of a young Russian violinist in the first concert of the Masterpiece Series has been canceled by the Russian government.

Joseph Fuchs, a violinist who has made world tours and more than 80 New York appearances, will replace 19-year-old Liana Isakadze Oct. 5 in Northrop Auditorium.

THE CONCERT WAS to have been Miss Isakadze's western hemisphere premiere.

In a letter to series patrons, James S. Lombard, director of the University Artists Course, wrote that "With the international news this summer . . . and my own experiences in Russia in July, it isn't hard to guess the reason" for the cancellation.

In an interview yesterday, Lombard said he traveled for 8 weeks last summer viewing opera, ballet, and orchestra performances in Europe, the Philippines, Greece, Thailand, and the United States.

In Leningrad "we were supposed to have hotel rooms for 4 nights," he said. "Instead we spent 2 nights on the train and 2 in the hotel."

"We were supposed to see 2 ballets, 1 concert and 1 opera," he added. "We saw only 1 major opera—'The Magic Flute'."

THE RUSSIAN government canceled 2 U.S. appearances of pianist Sviatoslav Richter, once in 1963 and again last year, when he was replaced in Northrop by the Boston Symphony.

"It all depends upon the Cold War relations between the United States and Russia at the time," Lombard said.

Season tickets for the 10-concert Masterpiece Series are available in 105 Northrop.

U Debate Team seeks members

The University Debate Team invites interested students to meet at 12:45 p.m. today in 308 Folwell Hall.

No experience is necessary to join the team. About 20 tournaments are scheduled across the country this year. The first will be Oct. 21 and 22 at Northern Illinois University.

The team will debate a British team from Oxford Oct. 25 on the St. Paul campus and Oct. 26 at Morris.

Those unable to attend may call Bernard L. Brock, professor of speech and theatre arts, at 373-2570.

Page 8

The Black Forest Inn

The best in authentic, home-made German foods.

Light and dark beer on tap
Also different imported beer.

26TH AND NICOLLET

Must be 21

YOU CAN EAT

Very Well

From 7:30 A.M. to 2:00 P.M.

at

The University Episcopal Center

312 17th Avenue S.E.

Come Try It!

You don't have to be a genius to work at G.E.

Near genius is okay.

A near genius with drive, stamina and imagination, that is.

And it doesn't really matter what subject you're a near genius in. General Electric is looking for top scientists — and for top graduates in economics, business, law, accounting and the liberal arts.

Nobody who joins G.E. is going to feel cramped. This is a worldwide

company, and it makes over 200,000 different products. So there's plenty of room to feel your strength — and in some of today's most challenging fields: transit design, urban lighting, jet propulsion, computers, electronics, aerospace, you name it.

Challenges like these have raised a new generation of idea men at G.E. If you're good enough to join

them, you'll find responsibilities come to you early. Your talents are recognized, your work is rewarded — in money and in opportunity.

This time next year, you could be on your way. Talk to the man from G.E. next time he visits your campus. And don't be surprised if he's young, too. At General Electric, the young men are important men.

Progress Is Our Most Important Product

GENERAL  ELECTRIC

Passengers for bus service exceed MSA's goal by 50

A "beautiful" start began the Minnesota Student Assn. express bus project, co-director Tom Mortenson said yesterday.

Only 2 of 17 scheduled routes failed to run, and all persons signed up for these routes were informed of the failures ahead of time.

STUDENTS can still sign up for all routes until the end of next week, although no reduced rates for rides missed can be allowed, Mortenson said. The average contract sells for \$40, and can be purchased in front of 213 Union.

Signed contracts for bus service from 350 persons have already been returned. That's a total of 50 over the goal that Mortenson and co-director Marty Eldridge, CLA sophomore, had set. The only serious problem Monday morning was overcrowding on the busses, Mortenson said. Three lines were congested, including South St. Paul, which packed 60 passengers on a 40-passenger bus.

"WE DON'T KNOW what to do about this yet," he said. "We

have a funny problem of having too many people on a bus and not having enough money to pay for more busses."

The lines were on schedule until they reached the campus area, Mortenson said. There, the usual early-quarter traffic jam slowed the busses a few minutes.

The two routes which did not run yesterday were West St. Paul and Edina. Bus companies refused service unless their busses reached the full quota of passengers set by them.

OTHER COMPANIES agreed to give service even though most of the routes could not fill their quotas. The average quota is 40 persons per bus.

When most routes failed to fill by last Friday, the freshmen serving as coordinators for the system bargained with the bus companies for more time. Most were successful, Mortenson said.

He added that he hoped to have the West St. Paul and Edina routes ready by next Monday, while a

proposed line to Roseville will not be ready until winter quarter.

The quota for winter quarter is 1,000, he said.



HURRAH FOR RED BARN!

Football heroes, cheerleaders, the Big Man on campus... everyone goes for Red Barn's tasty

BIG BARNEY

39¢

Double hamburger sandwich — two pure beef patties, creamy cheese, pickle and a savory sauce in a toasted double-decker bun

RED BARN

313 Oak St. S.E.

UNIVERSITY ARTISTS COURSE
Celebrity Series
UNIVERSITY OF MINNESOTA
1966-1967

Wednesday, October 19, 1966 (Optional)
MANTOVANI and His Orchestra

Wednesday, November 2, 1966
THE MITCHELL TRIO, GODFREY CAMBRIDGE, CAROLYN HESTER

Wednesday, November 16, 1966
SABICAS, Flamenco Guitarist

Wednesday, December 7, 1966
AMERICAN FOLK BALLET

Tuesday, January 17, 1967
VAN CLIBURN, Pianist

Saturday, February 4, 1967
PORGY AND BESS

SEASON TICKET PRICES—5 CONCERT SERIES

Main Floor: \$9.00, \$11.00, \$13.00, \$15.00
Balcony: \$5.00, \$9.00, \$11.00, \$13.00

Optional 6 Concert Series

Includes above 5 concerts plus Mantovani
Main Floor: \$11.00, \$13.00, \$16.00, \$18.00
Balcony: \$6.00, \$11.00, \$13.00, \$16.00

**NORTHROP MEMORIAL AUDITORIUM
UNIVERSITY OF MINNESOTA**

**BUY
SELL** **CLASSIFIED ADS** **TRADE
LEASE**

Call 373-3385

U Theatre plans tryouts

Anyone interested in University Theatre is invited to a coffee hour from 3:30 to 5 this afternoon in the Union Women's Lounge.

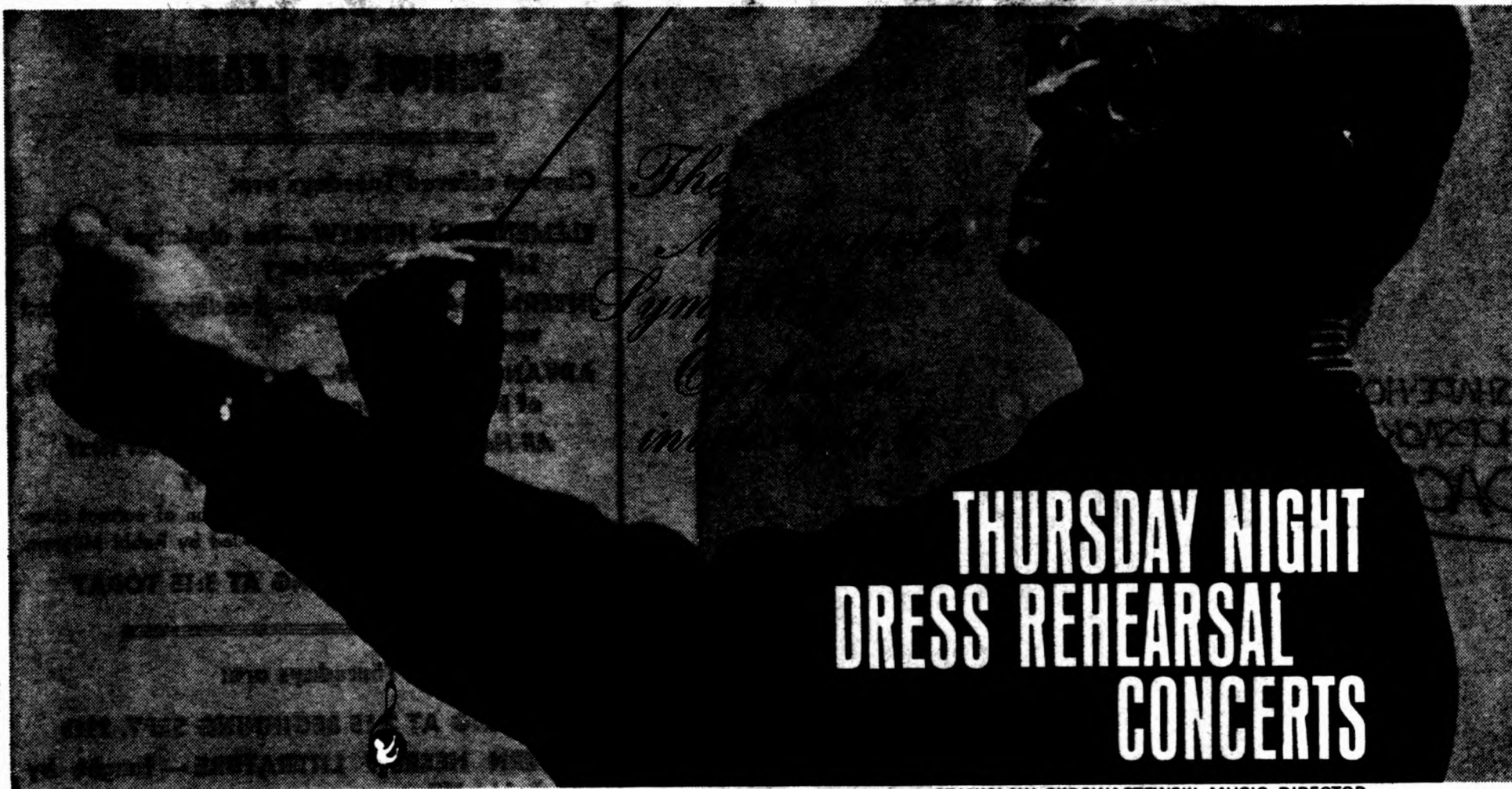
The University Theatre faculty and active students will be there to meet new students. Tryouts for 3 fall quarter productions will be announced.

Tryouts for "Revelation," a play about Yugoslavian villagers trapped in a church during a Nazi invasion, will be held at 7 p.m. today

and at 2:30 p.m. tomorrow. Director Edward Payson Call of the Tyrone Guthrie Theater said he needs at least 32 cast members. He'll take freshmen and non-theater majors as well as veteran actors.

Those trying out should prepare two contrasting readings, neither longer than 1½ minutes. The selections may not be from the play itself.

"Revelation" opens Nov. 3 in Scott Hall.



**THURSDAY NIGHT
DRESS REHEARSAL
CONCERTS**

STANISLAW SKROWACZEWSKI, MUSIC DIRECTOR

5 CONCERTS/ANY SEAT/ONLY \$8.50

SPECIAL FACULTY PRICES—5 CONCERTS FOR \$15

Introducing a "first" for symphony-goers... and a special money-saving opportunity for students. Enjoy the "Friday Night" concerts on *Thursday!* Five special "dress rehearsal"

presentations of the entire Minneapolis Symphony programs, complete with guest artists. All five concerts for a low \$8.50... and you can reserve any seat in Northrop Auditorium.

ALL CONCERTS THURSDAY NIGHT AT 8:00

OCTOBER 20—Ruggiero Ricci, Violinist
DECEMBER 8—Christian Ferras, Violinist
JANUARY 5—Aaron Copland, Guest Conductor
MARCH 30—Minneapolis Symphony Orchestra Artists
APRIL 6—Clifford Curzon, Pianist

ORDER YOUR TICKETS NOW. APPLY AT THE SYMPHONY TICKET OFFICE, 106 NORTHROP AUDITORIUM. PHONE 373-2331 OR USE YOUR DAYTON'S CHARGE ACCOUNT.
Tuesday, September 27, 1966

Plush new tower...

(Continued from Page 1)
fect, also unique in University residence halls, serve a similar purpose.

"IT'S DIFFERENT," commented Miss Schriver. "They worked for more texture in this building to relieve the monotony you usually find in a dorm."

The new addition is coordinated with the older Sanford Hall and the two function practically as one. A common cafeteria is located in the older building and changes have been made in it recently to provide for the new combined structure. During the summer of 1965 the cafeteria was remodeled to accommodate the added students.

Last summer a small library, a study alcove and an office combined into a small dining room.

FUTURE PLANS include converting the former private lounge of the old building to a study lounge including a small library lounge and making the former public lounge into a TV, stereo, and piano lounge.

According to Miss Schriver, "Things are a little hectic right now. Everything is new and just a bit stiff. Until Friday two rooms

**PATRONIZE YOUR
ADVERTISERS**

and one hallway on the fourth floor were yet to be carpeted. Last Wednesday night we had a fire drill and couldn't get the alarm turned off for quite a while.

The residents cite their own little problems. LaVona Peabody, CLA sophomore, complained that the elevators occasionally run a little slow, "because people push the buttons for every floor to see what color the carpeting is on each level."

"IT GOES GREEN, green, aqua, aqua, rust, rust, gold, gold and aqua, from top to bottom." She added, however, that the elevators are running closer to schedule now that most residents have become familiar with the building.

The official open house is scheduled for the Thanksgiving weekend.

Ceremonies today to dedicate Heart Club Hospital addition

A million-dollar addition to the Variety Club Heart Hospital at the University will be dedicated today with a reception and dinner for all club members and women's auxiliary.

The ceremonies will begin with a reception at the Minneapolis Club from 6 to 7 p.m. Guests will be taken by bus to the Union for a 7:30 p.m. dinner in the main ballroom.

UNIVERSITY OFFICIALS and most Regents will also attend. Dr. Charles W. Mayo, chairman of the board, will receive a gold key to the new addition from Donald Swartz, chairman of the Variety

Club Heart Hospital Assn.

An honored guest will be Pamela Schmidt who, in 1954, became the first successful open-heart patient at University Hospitals, where doctors used a new technique of by-passing the heart during the operation by having a donor's heart pump the patient's blood.

Another honored guest will be Col. James Carreras, of London, England, international president of the Variety Clubs of the world,

who will speak briefly during the evening's program.


THE VARIETY CLUB Heart Hospital was begun in 1948, when the club presented the University with a \$300,000 check to start construction. By March 1951, when the hospital was dedicated, about one-third of its entire cost had been raised by the club.

The hospital is the first in the nation devoted exclusively to the

Hospital

(Continued on Page 11)

the
P
O
D
I
U
M



PIPE SMOKERS!!
FINEST QUALITY
DOMESTIC & IMPORTED PIPES
& TOBACCOS - SMOKING
ACCESSORIES - PIPE REPAIR

MUSICIANS!!
MUSICAL SUPPLIES
INSTRUMENTS - STRINGS
SHEET MUSIC AND A COMPLETE
LINE OF ACCESSORIES

music and tobacco shop
417 14th Ave. S. E. • 332-9006

CAMPUS
OAK & WASH SE FE 1-5600

Free Parking!
Last Times Tonight
JULIE CHRISTIE
(Best Actress of the Year) in
"DARLING"
Rec. Adults at 7:15

PLUS!
RITA TUSHINGHAM in
"LEATHER BOYS"
Once at 9:20
Tomorrow: "Ten Little Indians"

VARSITY
13th & 4th SE FE 1-2492

"A stunning film."
—New York Times
"An Unusual and
Worthwhile film."
—Don Morrison

"DEAR JOHN"
Rec. Adults at 7:20 & 9:40

BLAZER CUM LAUDE
MAVEST GIVES YOU A
GREAT NEW
LINE-UP OF COLORS

IN SHAPE-HOLDING
HOPSACK WITH
DACRON®



BLAZER SHOWN: 55% DACRON® POLYESTER, 45% WORSTED WOOL.
About \$47.50 in seven top colors. *Du Pont's registered trademark.
Du Pont makes fibers, not fabrics or clothes.



Better Things for Better Living... through Chemistry

Get Your Mavest Blazer with "Dacron" at

DAYTON'S

MINNEAPOLIS

THE B'NAI B'RITH HILLEL FOUNDATION

1521 University Ave. S.E.

announces the first session
of this year's

SCHOOL OF LEARNING

Classes offered Tuesdays are:

ELEMENTARY HEBREW—The alphabet and the 1st steps in vocabulary

INTERMEDIATE HEBREW—Reading, writing and vocabulary

ADVANCED HEBREW—Syntax and vocabulary of Modern Hebrew

All Hebrew classes will have a joint first meeting at 2:15 today

Modern Jewish Humanities—A discussion of current question asked by Jews and non-Jews—led by Rabbi Milgrom.

FIRST CLASS MEETING AT 3:15 TODAY

Classes offered Thursdays are:

MEETING AT 2:15 BEGINNING SEPT. 29th

MODERN HEBREW LITERATURE—taught by Rabbi Milgrom

MEETING AT 8:15 A.M. BEGINNING SEPT 29th

MISHNAH, with Emphasis on Ethics—taught by Rabbi Milgrom

MEETING AT 2:15 BEGINNING SEPT. 29th

All Classes are Tuition-Free
Everyone is Welcome

Doctor prescribes questioning minds for medical answers

Edward Jenner, William Harvey, and many other famous medical researchers challenged medical teachings in their graduate days which led in their later years to great discoveries of the 19th and early 20th centuries.

Medical students today should also question teaching today for "we are indeed not short on problems."

We need answers for cancer and heart disease — our two biggest killers today, said Dr. James R. Jude, professor of Cardiovascular and Thoracic Surgery at the Miami University School of Medicine. His talk was entitled, "Medical Students and Research—The Development of an Idea."

HE SPOKE last night before 64 student scholarship winners at the annual Minnesota Medical Foundation dinner, meeting and honors program.

A brief introduction by Dean Robert Howard of the Medical School, a financial report by the Foundation's secretary - treasurer Dr. N. L. Gault, a report on the Foundation by executive director Eivind Hoff, Jr., and a teaching fellowship award were also part of the meeting.

He also said: The present pressure of learning—"the lack of mental space"—due to the great deal of material to be studied and due to class competition doesn't allow room for research. But we cannot allow the

past to seal our future, he said. Advances in medicine have come about when men have had open minds and were not afraid to challenge.

Developing and encouraging students to inquire into medical fields besides just absorbing books will open minds of students to solving the present problems of medicine.

STUDENTS FLOCK today to groups of the "investigative spirit," asking questions from their professors and wanting to find out for themselves when they can't get the answers.

Dr. Jude also pointed out: Medical problems needing solutions are more complex today, "we are in an era of teamwork in research, and cooperation with other sciences, such as engineering and physics, have led to the development of equipment needed in, say, intercardiac surgery.

"The patient will reap the harvest of new discoveries," he said.

DR. HOWARD noted the importance of medical manpower in this region due to the "gret public concern over" needs of the future.

A teaching fellowship, the Cyrus P. Barnum Jr. Memorial Teaching fellowship was presented to Thek-ke G. K. Nair, a junior staffman in Biochemistry who is from India.

The award is to commemorate "Dr. Barnum's excellent teaching," said Dr. W. D. Armstrong, head of the Biochemistry Department, who made the presentation of the award.

Dr. Barnum, a noted biochemist, died in the summer of 1965 after 23 years of teaching and research at Minnesota. Memorials established the fund.

Dr. Jude, 38, is a 1953 graduate of the Minnesota Medical School, and was named one of America's Ten Outstanding Young Men in 1962 on the basis of his work in closed-chest resuscitation.

SAB announces personnel changes

Several changes in the Student Activities Bureau (SAB) were announced last week by director Donald Zander.

Roger Harrold is the new coordinator of the Orientation Office. He succeeds Leon Rottmann who left the University in November to become a psychologist at the University of Nebraska.

Robert Ross is the new SAB student personnel worker advising the fraternities. He succeeds Eugene L. Holcomb who is leaving

the University to work for the Agency for International Development (AID).

Zander also announced that James H. Reeves, assistant SAB director, is on leave from the University through January.

He is in South America advising the University of Concepcion in Chile on student activities.

Sell it Fast with a Want Ad.

HERMES

3000

PROFESSIONAL PORTABLE



FREE: STEEL TYPEWRITER STAND

"THE BEST" **KIRK** EXPERT REPAIRS

617 S.E. 14th Ave. PE 1-7277
(3 Blocks from Campus)
Easy Parking in Driveway

6 new professors on staff; Regents confirm positions

Six major staff appointments were confirmed by the Board of Regents.

Chester L. Bower was named professor in the School of Social Work. Bower comes to the University from the Resources Development Associates of Pennsylvania.

William J. Boylan was appointed associate professor of animal husbandry. Boylan, who comes from the University of Manitoba, earned both his M.S. and Ph.D. degrees at the University.

John R. Cannon will join the School of Mathematics as associate professor. Cannon served on the staff at the University of Purdue in the same capacity.

S. Stephen Chapman will become an associate professor of pediatrics and microbiology. Chapman attended Harvard and Michigan and has worked in both private industry and in universities.

Lee Roy Martin was named professor of agricultural economics.

Val W. Woodward will assume the position of professor of genetics on Feb. 1, 1967. Woodward received his degrees from Utah State (B.S., M.S.), Kansas State (M.S.), and Cornell (Ph.D.).

Hospital...

(Continued from Page 10)
care of heart patients and heart disease research.

The Variety Clubs of America were organized in the 1920s for the purpose of fraternal fellowship among persons in all facets of show business.

nsa
speaks your language

nsa
NOI TIẾNG ÔNG

nsa
說你的話

nsa
ГОВОРИТ ВАШ ЯЗЫК



And furthermore, if you are especially adept in a foreign language, the National Security Agency is ready to give you immediate linguistic assignments or may even train you in an entirely new language.

Demonstrated ability in language research can lead to more complex and sophisticated duties. The systematic accumulation of information, examination of data and preparation of special reports are important parts of these assignments. And scientific linguists will find nowhere else the opportunities for practical applications of their craft.

At NSA you will be joining an Agency of national prominence—a unique civilian organization responsible for developing "secure" communications systems to transmit and receive vital information.

NSA offers you this opportunity to further broaden your knowledge of modern language or area studies, and to use your talents in a challenging and rewarding career while you enjoy also the broad, liberal benefits of Federal employment. In return, we ask that you not only know your language, but that you be flexible, naturally inventive and intellectually curious. That's a lot to ask.

Do you fit the picture?

Where to go... what to do
Language applicants must take the Professional Qualification Test (PQT) as a prerequisite to NSA interviews for employment. Pick up a PQT Bulletin at your Placement Office, the sooner the better. It contains a brief registration form which must be received in Princeton, N.J. by October 12 (for the October 22 test).

national security agency

1600 Wilson Avenue, N.W., Washington, D.C. 20505 • An equal opportunity employer M/F
... where imagination is the essential qualification

Judges confirm discrimination charge

Suspension of Colorado's Sigma Chi upheld

A U.S. District Court recently upheld the University of Colorado's suspension of Sigma Chi fraternity's rushing and pledging privileges on campus for violating the school's anti-discrimination rules.

The University chapter of Sigma Chi, under the terms of a decision handed down last April by the All-University Judicial Council, is under suspension effective Jan. 1, 1968, for similar reasons.

THE SUSPENSION will be lifted if Minnesota's chapter can show that the Council's charges are unjust, but the chapter has decided to appeal the decision this year.

The Colorado decision came in a suit filed by Sigma Chi national and local fraternities against the University's Regents, who placed the Beta Mu chapter on probation last September for failing to show it was free to pledge and initiate members without discrimination.

The fraternities charged that Colorado's requirement of non-discrimination in its selection of members violated the federally protected right of free association.

They also argued that the Regents acted without evidence and violated the right of the fraternity to due process of law.

THE REGENTS HAD ordered an investigation of Sigma Chi in

April, 1965, after the fraternity's national executive committee suspended a local chapter at Stanford University in Palo Alto, Calif., for allegedly failing to "keep the ritual and maintain a clean chapter house."

The Sigma Chi committee acted just before the Stanford chapter was to pledge the first Negro in the national fraternity's 110-year history.

Jim Billings, 1965-66 president of Minnesota's Sigma Chi chapter, recently accused the press of giving

his organization bad publicity and said newspaper accounts had taken a distorted view of what really happened at Stanford.

SIGMA CHI HAS no stated discriminatory policy, but a "social acceptability" clause in its charter requires that no chapter propose anyone for membership "who for any reason is likely to be considered personally unacceptable by any chapter or any member anywhere."

After the investigation it requested was completed, the Colorado

Regents decided that the Stanford chapter was suspended by the national organization for pledging a Negro and concluded that the Boulder chapter was violating the University's prohibition against discrimination.

The University's anti-discrimination rule was adopted in 1956 by the Regents. It provided that a fraternity would be placed on probation after 1962 if its constitution, rituals, or government refused membership to any person because of his race, color, or religion.

IN REVIEWING the Regents' action, a 3-judge federal court ruled that the Regents could constitutionally bar the fraternity from discriminating in membership selection on the basis of race.

Following the suspension of the Stanford chapter by the national Sigma Chi committee in April, 1965, several university administrations, besides Colorado and Minnesota, made investigations of the fraternity's rushing and pledging procedures on their own campuses.

Recent law gives some students social security

Many University students are now eligible to receive social security benefits, according to W. E. Holtan, district manager of the social security administration.

Recent changes in the Social Security Act now permit some full-time unmarried students, aged 18 through 21, to receive payments even though they may earn up to \$1,500 a year.

The student must be the child of a deceased worker who died while insured under social security, or of a retired or disabled worker who is receiving social security benefits.


If a student earns more than \$1,500 a year, he still may receive some benefits depending on his total annual earnings and on the number of months he worked. All benefits may be retroactive for 12 months.

Further information can be obtained at the Minneapolis social security office at 110 S. Fourth St., 339-7511. St. Paul students should contact the St. Paul office at 175 Aurora, 228-7811.

Parking rates spark meeting

A meeting to discuss parking rates and lot priorities will be held tomorrow between administration and Minnesota Student Assn. (MSA) representatives.

The discussion will center on MSA proposals concerning adjustment of reserve lot rates for car pools. A report prepared by Tom Mortenson, former MSA Planning Commissioner, outlining the changes requested, is said to be critical of the administration's handling of parking rates.





NEW STUDENTS! Enrollment Period for Supplemental Blue Cross-Blue Shield Coverage

DESIGNED TO SUPPLEMENT YOUR HEALTH SERVICE COVERAGE

Take advantage of this special coverage which provides benefits not included in your Health Service program. Your Health Service benefits, supplemented by this special Blue Cross-Blue Shield coverage, assure you comprehensive, year-round health care protection. This special coverage is available under both "single" and "family" plans at low student rates. Enroll today.

ENROLLMENT NOW OPEN AT ROOM W235 HEALTH SERVICE YOU MUST ENROLL BY FRIDAY, SEPTEMBER 30, 1966



'Grueling fight' on officers election

NSA delegates met, voted, but not without dissent

By HANS KNOOP
Daily Editor-in-chief
(Second of two articles)

Although reactions to the National Student Assn. (NSA) Congress by University representatives were generally favorable, some strong criticisms, primarily aimed at the election of national officers, were also voiced.

Liberal Eugene Groves, Rhodes Scholar and holder of a doctorate in physics, overwhelmingly defeated Danny Boggs, Conservative from the University of Chicago



Groves

GROVES was attending Oxford when he was asked to run for the presidency by Phil Sherburne, outgoing president. Because he needed delegate status from an NSA member school to run for the presidency, Groves applied for admission to Roosevelt after having been refused credentials by an University of Chicago student court.

Groves received delegate status from Roosevelt and Boggs challenged it on the plenary floor. But the Congress, by a 278 to 95 vote, approved Groves' credentials, although it was not until later that day that he received official notice of his admission to Roosevelt.

Dave Edstrom, law sophomore, and former president of the Uni-

versity Young Americans for Freedom, called Groves' election "the biggest farce of the Congress."

DENIS WADLEY, education senior, said "the Congress disgraced itself by validating the credentials of a man who had never attended the school he claimed to represent, and had no intention of ever doing so."

"The outgoing NSA president flew to England on NSA money to talk this fellow into postponing the second year of his Rhodes to make the race. The whole thing was a shabby in-group maneuver which can only reflect badly on NSA."

St. Paul Student Council Pres. Martin Berg had nothing but unkind words for the elections:

"When all but 4 nominated candidates out of 20 withdraw, when a delegate rises and speaks during voting to keep from being elected by write-in, when the delegate to be elected president receives his credentials only after a long and heated floor fight, it makes me wonder how well NSA is upholding the ideals it so loudly applauds."

(The opponents of National Affairs Vice Pres. Ed Schwartz of New York University and International Affairs Vice Pres. Rick Stearns from Stanford withdrew shortly before the voting.)

MINNESOTA Student Assn. Pres. Howard Kaibel, who supported Groves, Schwartz, and Stearns, was pleased with the outcome of the elections: "We witnessed this year the demise of the 'old order' and the ushering in of major new directions for the national student movement," he said.

"As a result, I look forward to NSA becoming more reflective of and relevant to the schools that

participate," Kaibel said.



Theis

"First when one participates in discussion with student leaders from across the country and foreign lands it is impossible not to do some real serious thinking, perhaps for the first time in one's life."

"SECOND, a tremendous amount of information was consumed and digested at the Congress with seminars and workshops on every topic of interest to students."

"Finally, writing and debating resolutions that would represent the views of NSA as the U.S. National Union of Students was exceedingly difficult, forcing the brains of students beyond normal capacity, sometimes 36 or more hours without stopping."

MSA senator Robert Canfield said he was "extremely troubled by the fact that many of the ideas and policies coming from the Congress were not representative of the entire student body."

"It would seem, from the balance of time given to national and campus issues, that many of the delegates were more interested in perpetuating their own political ambitions and ideals, than in serving their fellow students and in solving campus problems."

Canfield also saw benefits in the Congress: "The seminars and workshops were extremely valuable, for

they gave the students ideas and information which they could take back to their own campuses," he said.

To Jo Ann Hayenga, CLA sophomore, the Congress at first seemed "to exude a mood of radicalism and general fear of the current state of our union. This tone then seemed to change to one of knowledge and understanding of mistakes being made and suggestions for betterment."

"EITHER THE radicalism disappeared or I drifted farther 'left'—I can't decide which," she said.

Although MSA senator Richard Saliterman thought the Congress was "productive and of great value," he said there was room for improvement.

He suggested more conserva-

tively oriented speakers should be invited in the future in order to provide "greater balance." But the liberal speakers who did address

NSA report

(Continued on Page 18)

Masterpiece Series

WED., OCT. 5
8:30 P.M.

JOSEPH FUCHS
Violin Virtuoso
"Electrifying Brilliance"
Northrop Auditorium

\$4.00 \$3.50 \$3.00
\$2.50 \$2.00

105 NORTHROP U. OF M.
DAYTON'S (ALL STORES)

PAPERBACKS IN REVIEW

A publisher's survey of what's new in the way of unrequited reading

While he was writing it, John Barth described his new novel, GILES GOAT-BOY as "a longish story about a young man who is raised as a goat, later learns he's human and commits himself to the heroic project of discovering the secret of things."

When GILES GOAT-BOY was published last month, the critics displayed none of Barth's restraint. GILES GOAT-BOY has become one of the most celebrated literary events of the new publishing season, and John Barth has been variously described as:

"the most prodigally gifted comic novelist writing in English today... Who else but Barth would dare create a hero who was sired by a computer out of a virgin?..."

"No summary, no excerpting can possibly convey the fantastic richness of the novel, its profligate bounty. Barth could have cut it by a third (though one would hate to see a line of it go) and made the reputation of a dozen novelists by distributing the pieces among them." —Newsweek Magazine

"clearly a genius..."

"What is one to do about John Barth? Is he — as so many people interested in original, funny, creative, and brilliant writing agree he is — the most original, funny, creative, and brilliant writer working in the English language today? Or merely, as these same people hasten to add, the most impertinent and long-winded? Is GILES GOAT-BOY the great American novel, come at last into being, or just a long, though expert, shaggy-goat story? And if so — or indeed, if not so, or both — whose beard is being pulled? Mr. Barth is clearly a genius... but what does that mean? Intoxicated by GILES GOAT-BOY, I would suggest it applies to someone who by force of will and wild connections in the mind, intoxicates..."

"What is one to do about John Barth? Well, first of all, partake, eat, quaff, enjoy. Whatever the doubts and recriminations, they will keep till morning; I'm not sure they matter in the slightest." —ELIOT FREMONT-SMITH, New York Times

"like Mephistopheles — or perhaps Batman."

"(GILES GOAT-BOY is) a gothic fun-house fantasy of theology, sociology, and sex, leaping across great tracts of human history... Prodigious... Reading GILES GOAT-BOY, and debating its meaning, will be one of the most bracing literary exercises of 1966 and beyond. It is a satire of major import." —Time Magazine

"a rarity among American novelists in having a brilliant mind... a mind that invents ideas only to flout them..."

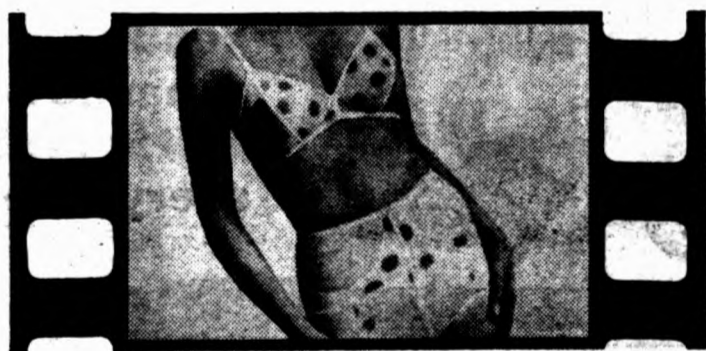
"With this fourth novel, John Barth at 36 increases the likelihood that the years since World War II are among the most rewarding in the history of American fiction." —RICHARD FOIRIER, Washington Post Book Week

"the best writer of fiction we have at present and one of the best we have ever had..."

"His audience must be that same audience whose capacities have been extended and prepared by Joyce, Proust, Mann and Faulkner. For some time we have been wondering what to do with the training given us by those giants of modern fiction... The answer now seems clear. The difference between competence and genius can hardly be made clearer. And Barth is a comic genius of the highest order." —ROBERT SCHOLLES, front page New York Times Book Review

GILES GOAT-BOY is published by Doubleday & Company, Inc., Garden City, New York, which usually devotes this column to Anchor Books, but felt that plugging this particular hard-cover novel was irresistible. GILES GOAT-BOY is \$6.95 at one of the best-equipped booksellers in the country — your college store.

Plaza 8. What the underground girls are wearing underneath.



DOTS AND DAFFY. SHEER NYLON WAFER-DOT BRA. PADDED; \$5.00. UNPADDED; \$4.25
MATCHING PANTIE GIRDLE. WHITE WITH YELLOW, GREEN, PINK DOTS; \$7.00
FROM THE NEW PLAZA 8 COLLECTION BY PERMA-LIFT®

Dayton's

4th Floor Corsets & Lingerie

● MINNEAPOLIS

● SOUTHDALE

● BROOKDALE, ST PAUL

Four Icelanders to visit campus, tour State Capitol

Four Icelandic student government leaders will be guests at an informal coffee hour with students at 3:30 p.m. today in 320 Union.

Katrin Fjeldsted, Hoskuldur Thrainsson, Gardar Valdimarsson, and Gudmundur Thorgeirsson will be visiting the University for the week before going to Boston, Mass.

While in Minnesota, they will tour the Capitol, meet state officials, attend classes here, and see a Guthrie production.

The tour is sponsored by the U.S. National Student Assn. with local arrangements made by the Minnesota Student Assn.

Counseling...

(Continued from Page 1)

and supervise off-campus student housing by assisting students in finding housing, approving off-campus living arrangements, and settling student and house owner complaints, Snoke said.

Snoke said the structural change in the Office of the Dean of Students "doesn't represent as radical a change as it may look from the outside." The same functions formerly performed by two offices will now be under one office and director, he said.

Snoke said he expects the new arrangement to "put together in one office a greater amount of knowledge and skill in dealing with students needs for appropriate living conditions."

John M. Huebner, associate Housing Bureau director under Miss McCullough, will become part of the new office and will have major responsibility for collecting data on students in areas not directly connected with the classroom, according to Snoke.

Applications for Britian study

Interested in earning your degree at a British university?

The British government, in appreciation for Marshall post-war aid, established Marshall scholarships in 1953 for American students. Twenty-four awards are given annually to men and women under 26 and allow for a wide range of study.

The two-year study program includes living allowance, travel, and school expenses. Interested students should contact Earl Craig at 117 Temporary North of Mines (373-4162). Applications must be in by Oct. 22.

Typewriters

Sales



Rental



Repairs



MINNESOTA CO-OP Jr.

612 WASHINGTON AVE SE
DULUTH, MINN.

Medical School...

(Continued from Page 1)

doctors, the Medical School has increased its entering class size to 167 students this year. It is a first step in building a class of 200 to 250 students.

Last summer in anticipation of the increase, the University asked the legislature for \$27 million for additional research and hospital space. Construction of the buildings would start in 1969.

"I believe that Minnesota needs not only an expansion of our present medical school but, ultimately, another school as well," Howard said, "under the banner of the University."

NAME, however, indicates that it would be able to carry out the direction of a new school. The organization has a number of

private financial aids if the school has assurance of adequate financial help.

The organization has asked the legislature for \$500,000 to finance planning.

HOWARD SAID last summer that the University would stress the Board of Regents' request for funds to study the future family medical practice.

"Many thoughtful people in the medical community have concluded that the family doctor will be quite different from the general practitioner of the past," Howard said.

In addition, he urged the legislature to develop a subsidy program to encourage new doctors to locate in small communities and rural areas.

Illegal sign...

(Continued from Page 1)

the sign," Jerome Nelson, assistant superintendent of engineering, said. "We never designed it, in fact, had nothing to do with it. Perhaps the city engineers put it up."

(No one could be reached at the city offices late yesterday.)

Jamieson said the department is very annoyed with the situation because the police cannot fine anyone for riding bicycles on the lower bridge. In fact he has sent a letter to the Board of Regents concerning the matter.

However, McDonough said as yet no cyclists have been ticketed but it could happen in the future.

THE POLICE, Heck said, never know when a sign is legal or who put it up. "As far as I know the police have been tagging people in accordance to the sign."

Hanscom has indicated, though,

that no cyclists would be tagged in the future until the matter is solved.

Now most cyclists ride on the top of the bridge which, according to Jamieson, is illegal. "No vehicle can travel on pedestrian walkways (such as autos on the sidewalk). Since bicycles are, again, covered in the traffic laws with autos, they cannot be ridden on top."

SO, THOSE who ride bicycles on the lower half are within the law but will probably be arrested for breaking the law. Those who ride on top won't get arrested but are breaking the law.

Maybe the predicament will be solved if Plant Services gets approval from the Board of Regents to remove the sign.

But in the meantime, does anybody know who put up the sign?

LUTHER HALL

(L.S.A.)

1813 University Avenue S.E.

WEDNESDAY, Sept. 28

Vespers, followed by refreshments and discussion, 7:30 p.m.

FRIDAY, Sept. 30

Hayride and dance, 7:30 p.m.

SUNDAY, October 2

WORSHIP, 11:00 a.m.
Cost Supper 50c at 5:30 and WELCOME PARTY — L.S.A., 6:30 p.m.

MONDAY, October 3

"THE BIBLE ILLUSTRATED, Pastor Louis E. Ulrich, Jr., Instructor. Eight week non-credit course, Luther Hall classroom, 7:30 p.m. Fee \$5.00, includes text.


FRIDAY-SUNDAY, October 7-9

Retreat at Luther Park, Danbury, Wisconsin. New students especially invited. Register by Oct. 3. Cost \$5.


ROW!

ZOO!

ZAP!



BIC Medium Point 100



BIC Fine Point 200

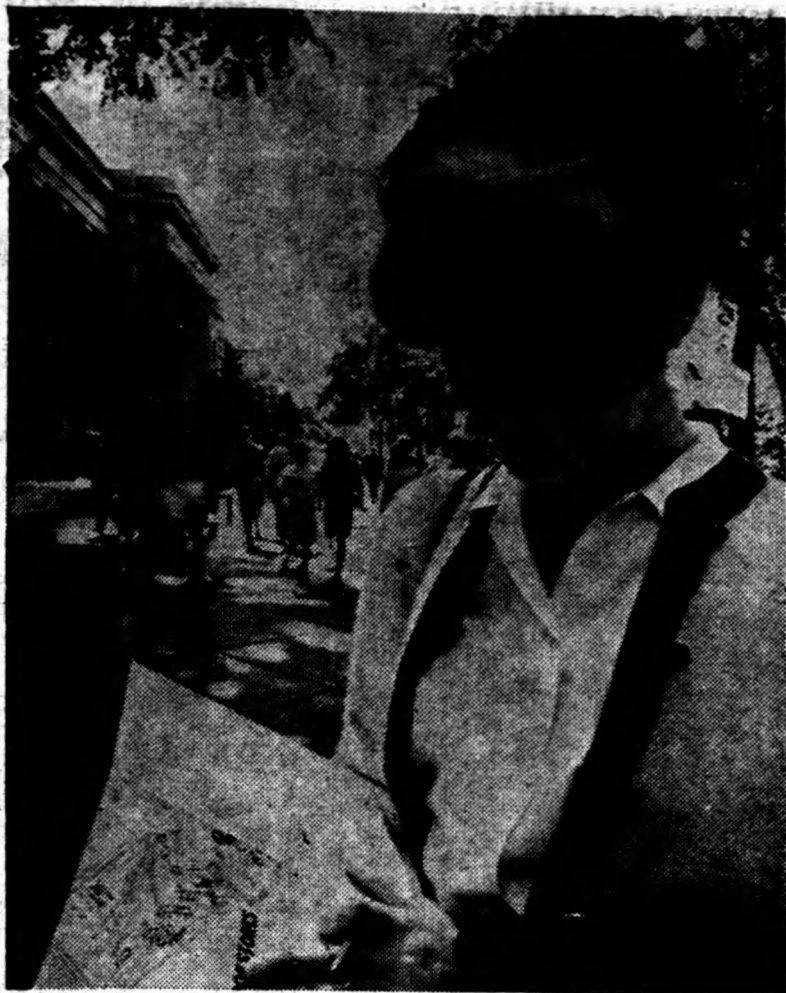
BIC's rugged pair of stick pens wins in unending war against ball-point skip, clog and smear!

Despite horrible punishment by mad research scientists, BIC still writes first time, every time. And no wonder. BIC's "Dynamite" Ball is the hardest metal made, encased in a solid brass nose cone. Will not skip, clog or smear no matter what devilish abuse is

devised for them by sadistic students.

Get both BICs at your campus store now. The BIC Medium Point for lecture notes, sneak exams and everyday use. The BIC Fine Point for really important documents... like writing home for cash.





Confused?

"I found all my classes all right, but I spent 45 minutes in one building looking for the ladies' room." Just one of the many problems the 10,000 incoming freshman faced during their first day of college life.

I think I know you— are you a freshman too?

By ANNE MCKINSEY

They are easily discernible. In groups of three on the grass, wearing stay-pressed pants, toting orientation portfolios. They appear to know where they are going, but their glassy-eyed stares betray them. They're the 10,000 incoming freshmen, and their comments and reactions to the first day of college life are many.

"I got off to a great start! I was late to my first-hour class, and when I got there the door was locked."

"IT CERTAINLY IS a change from Welcome Week. Then everything was more intimate; now it seems so big. But I think I'm going to like it."

"I went to the wrong class in the wrong building . . . at the right time, though!"

"I haven't gotten lost yet, but my boyfriend is late for lunch!"

"I came in a car pool and got here at 8 this morning. I've been walking back and forth from one end of campus to the other; I don't

have a class until 11:15!"

"Yes, I'm a freshman. . . why? Hey—I can't talk to you now; I think I see someone I know!"

"There are so many different types of people. No matter what kind of extreme individual you are, you are not alone. I still can't get over the enormous amount of people all over this big campus."

"I SLIPPED ON that stupid ramp over Washington Ave. I don't want to think about crossing that thing in the winter."

"I found all my classes all right, but I spent 45 minutes in one building looking for the ladies' room!"

"I'm as confused as any freshman here. My first hour class is larger than Macalester's enrollment."

Friday set as deadline

Enroll now in health care plan

Students have until Friday to enroll in the student supplemental health care plan providing added protection for service not covered by the University Health Service.

Students may sign up in W235 Health Service.

The Health Service provides students paying incidental fees with

certain hospital and medical care 24 hours a day, 7 days a week.

However, this plan does not pay surgeon's fees, cover students unable to get treatment at the Health Service due to an emergency illness or accident, nor protect students when they are not actually enrolled, such as during summer

vacation.

The plan, underwritten by Minnesota Blue Cross and Blue Shield, will provide these coverages:

- The rate for single students is \$21 annually to be paid at the time of enrollment.

- The annual rate for married students and dependents is \$124 annually to be paid at the time of enrollment or in quarterly payments.

- Maternity-obstetrical benefits are not included in this plan.

A pamphlet describing the plan can be obtained in W235 Health Service.

St. Paul campus art exhibition

Water colors, oils and primitive paintings are now being featured at an art exhibition on the St. Paul campus.

Showing until Oct. 15 are paintings by Mrs. Bessie Hanson. The primitive paintings of Minnetonka by Ralph Newberg can be seen until Oct. 7.

Both exhibitions are in the St.

Paul Campus Student Center galleries. Gallery hours are 8 a.m. to 11 p.m. Monday through Saturday. Sunday hours are noon to 11 p.m.

HURRAH FOR RED BARN!

Football heroes, cheerleaders, the Big Man on campus . . . everyone goes for Red Barn's tasty

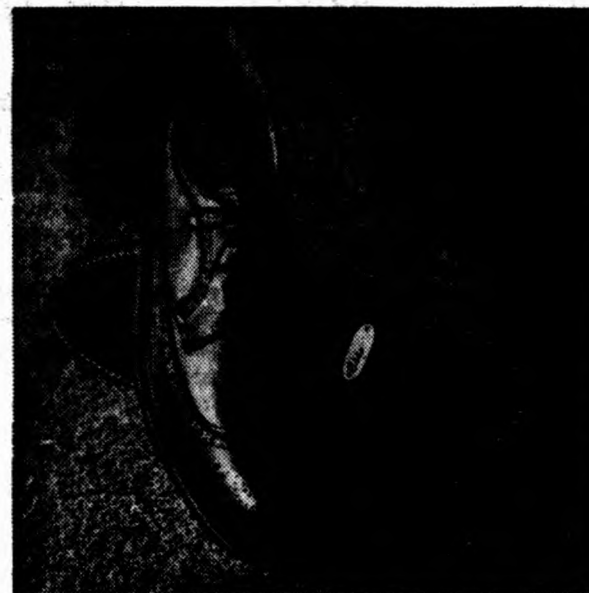
"DIGNIFIED" CHICKEN DINNER

69¢

four pieces of fried chicken and a heaping order of french fries.

RED BARN

313 Oak St. S.E.



... From the makers of Weejuns®

Bass MONOGRAMS™

The lusty brogue redefined. Ounces lighter, doubly flexible. The Monogram™ plate on the instep is our mark of quality . . . your mark of distinction.



There's a Plain Toe style, too. Both in Black, Golden and Hawthorn Brown grain calf and Cordovan color Corfam®.

G. H. BASS & CO., 159 Main Street, Wilton, Maine
CAMPUS HEADQUARTERS

Bass MONOGRAMS™ CAMPUS COBBLER

321 14th AVE. S.E.

DINKYTOWN — SHOPPERS CHARGE

the Sasson cut
"Prince Valiant"
the shape of things
to come!!



for the stunning
New Cuts

Nina Lee's
BEAUTY SALON
327 - 14th Ave. S.E.
Above Gray's Drug Store
FE. 6-6907

Keep It Under Your Hat



The Gopher Yearbook Has a New Format.

4 Books—that's right, 4 different sized books to choose from—one designed to appeal to you and your interests!

- Book #1: 160 pages highlighting sports and student life . . . \$5.00
- Book #2: Book #1 + 80 page senior section . . . \$6.00
- Book #3: Book #1 + 160 page organizations section . . . \$7.00
- Book #4: Book #2 + 160 page organizations section . . . \$8.00

\$2 WILL RESERVE YOUR GOPHER YEARBOOK

SEND TO MURPHY HALL, RM. 5

NAME _____

ADDRESS _____

CITY _____

Wilson hobbled by knee

Gophers swap QB's

By DAVID SHAMA

Minnesota's football team returned to drills yesterday afternoon faced with the possible loss of quarterback Curt Wilson for Saturday's Kansas game.

Wilson, the Gophers' most dangerous offensive threat, is hobbled by a knee sprain. He was dressed in pads yesterday but did not run on any offensive units and report-

ed a stiffness in his knee while jogging.

IF WILSON is not ready to go within a day or two the quarterback job against the Jayhawks will fall to Larry Carlson. Carlson ran with the first unit yesterday while most of the Gopher injured returned to practice.

Other players out with injuries or just recovering from them in-

clude end Ken Last, halfback Dick Seitz, tackle Ed Duren, linebacker Jerry Newsom, end Charley Sanders and halfback Dick Peterson.

Last said Monday that the swelling in his knee has receded and he expects to play Saturday. Seitz, who has an injured knee, is almost sure to miss Saturday's action and will probably be out for several weeks.

DUREN RETURNED to drills after a week's absence and is ready to go after recovering from a foot injury. Newsom and Sanders have hyper-extended elbows. Sanders had contact work yesterday but Newsom's elbow is more serious. He may not be ready for this weekend. Peterson's shoulder bruise is improving and the injury is not believed to be serious.

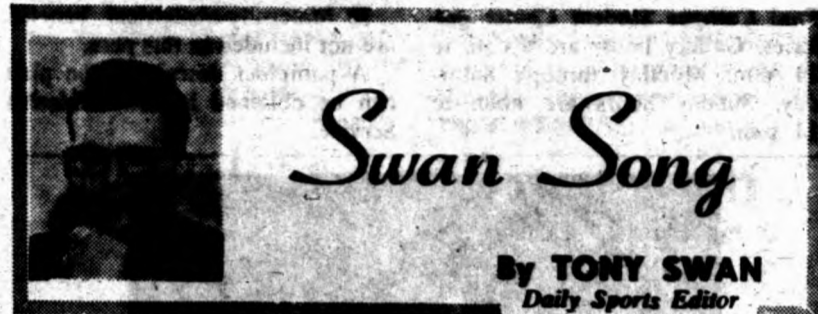
Monday's practice was devoted to corresponding errors made in last Saturday's game and introducing the squad to Kansas' plays and defenses.

After viewing films of Minnesota's 35-21 victory over Stanford the coaches were able to comment more accurately on the line play. The offensive blocking was much sharper than against Missouri according to the coaches and several individuals stood out.

"RIGHT END Chet Anderson and right tackle Ron Klick surprised us with their blocking," said asst. coach Bob Bossert. Anderson credited a relaxed attitude for his improved play.

Last day

Today is the last day to purchase reserved student athletic tickets at Williams Arena. The ticket booths will be open from 9 a.m. to 4 p.m.



Swan Song

By TONY SWAN
Daily Sports Editor

Not long ago Minneapolis Tribune sports writer Dick Cullum authored a column under the headline "Soldiers or Gridders at West Point?"

The crux of Cullum's complaint was that Army sports officials were recruiting athletes instead of soldiers.

"They are going to West Point to play football, then get out of uniform as quickly as possible," charged Cullum.

"I wonder if these are the times when West Point should be training boys for civilian careers in order to be strong in football."

CULLUM'S ARGUMENT comes very close to the old "students not athletes" theme which has led to a major movement in de-emphasizing intercollegiate athletics. It's the same old song about grades first, football later which is making the Big Eight (with its lower academic standards) one of the top football conferences in the country. It is an attitude which could very likely ruin collegiate football if it becomes widely accepted.

The University of Chicago, for example, found out that it couldn't play football with schoolboys. Result: after 11 straight Big Ten (Western Conference) losses through three seasons, Chicago dropped football.

That was before the days of the great increase in professional football popularity, a factor which complicates the grid situation at the military academies.

Here are the facts. No one wants to watch a loser, not cadets, midshipmen or anyone else. It's part of the Army tradition to win. Winning takes top players. Top players these days are interested in playing professional football. Professional football isn't interested in drafting men who have four or five years of active military service staring them in the face. And after those four or five years very few football players are capable of making a comeback against the ruthless competition of pro ball.

NATURALLY WEST POINT officials are interested in top athletes. Consider, for example, the rush they gave South St. Paul ace Jim Carter before he signed a University tender. They have to have good men to uphold a tradition—and if all of the athletes don't stay in the fold after their tour of duty, they have a least gives their best years.

To point an accusing finger at West Point recruiting is stupid, as stupid as it is to do the same thing to any college. A strong football school not only pays for its grid program but supports other less popular sports and spills over into academic areas as well.

As far as wanting to be soldiers—well, no one has yet complained that West Point was exclusively taking athletes into its halls. There are plenty of career men leaving the Point who never touch a football. But if Army football teams were made up exclusively of such individuals, it wouldn't be long before Army football went the way of Chicago.

Spartan shortage

Michigan State may have a houseful of aces this season but it's likely the Spartans will be pretty humble come 1967.

Of State's 11 defensive starters, eight are seniors. This includes all-Americans Bubba Smith and George Webster. While the offensive unit loses only three starters, two of the names are Clint Jones and Gene Washington, another brace of all-Americans.

Thrice blessed

Northwestern University football coach Alex Agase is one of the few men ever to win all-American honors three times—and one of the fewer still to do it on two different teams.

Agase made his first two honor rolls as an Illinois guard, and he third as a guard at Purdue where he was a wartime marine trainee.

Tough slate

While Big Ten schools are worrying over the fate of their various football entries, University of Chicago soccer coach Bill Vendl is tearing his hair over Chicago's "most ambitious schedule" ever.

"Our 1966 schedule is a tough one, both in the total number of games and in the quality of our opponents," says Vendl.

The Maroons open with ever-powerful Rockford College and also list such perennial toughies as Kendall College, Aurora College, Roosevelt University, Wheaton College, Principia College, Lake Forest and Ball State.

It fairly boggles the mind.

Hip Hawks

The University of Iowa has nominated five of its football players for the all-Big Ten academic team.

The quartet consists of Scott Miller, 4.00 pre-med student; Sterling Laaveg, 3.84 also in pre-med; Craig Miller, 3.27 in pre-law; John Hendricks, 3.12 in pre-med; and Bob Gibbs, 2.96 in business administration.

All but Hendricks are sophomores and all are on one of the Hawks' top two units.

Page 16

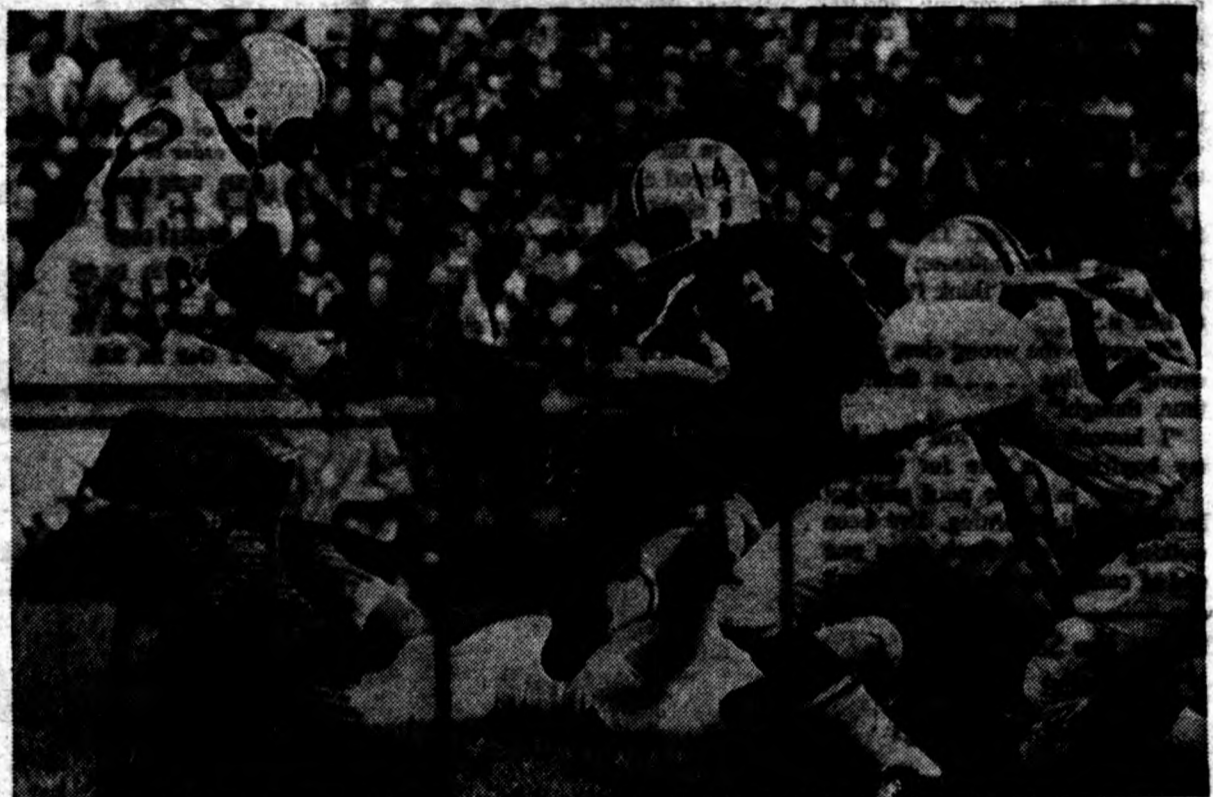


Blue Monday

A sore knee may keep Curt Wilson out of action this week

Monday night three-deep

- LEFT END—Chip Litten, John Williams, Del Jessen.
- LEFT TACKLE—McKinley Boston, Jerry Hermann, Ezell Jones.
- LEFT GUARD—Andy Brown, Bill Laakso, John Darkenwald.
- CENTER—Chuck Killian, Pat Parr, Steve Lundeen.
- RIGHT GUARD—Dick Enderle, John Walsh, Roger Christison.
- RIGHT TACKLE—Ron Klick, Ron Kamzelski, Ed Duren.
- RIGHT END—Chet Anderson, Charley Sanders, Bob Stein.
- QUARTERBACK—Larry Carlson, Ray Stephens, Matt Rauh.
- LEFT HALFBACK—Dick Peterson, Maurice Forte, Dennis Hale.
- RIGHT HALFBACK—Ray Whitlow, Hubie Bryant, Bobby Lee.
- FULLBACK—Dennis Cornell, Chip Christian, Mike Danielson.
- LINEBACKERS—Tim Wheeler, Gary Reiersen, Noel Jenke.
- DEFENSIVE BACKS—Tom Sakal, Gordon Condo, Gene Hatfield.



Curt Wilson in action against Stanford

Junior quarterback is rated as the Gophers' best running quarterback since all-American Sandy Stephens after picking up 109 yards Saturday.

Fourth consecutive year

FFFFFFF rides again

For the fourth consecutive year, the Daily sports page will feature its Friday's Fearless Forecasts for Feverish Football Fans.

THIS YEAR'S contest will consist again of 10 games to be predicted each week for eight consecutive weeks along with the

point spread of each game.

Weekly leaders will be determined by the number of correct picks. Ties will be broken by differences in point spreads.

Each week's contest will appear on Friday's sports page. Entries must be received by 3 p.m. each

Friday in the Daily office, 10B Murphy Hall.

ALL UNIVERSITY students are eligible except varsity athletes and members of the Daily sports staff. Participants must enter predictions every week to be eligible

(Continued on Page 17)

Minnesota Daily

Student ticket sales run slower than '65

Student athletic ticket sales this year are running substantially behind last year's, Minnesota Ticket Manager Shirley Korblick reported yesterday.

"Our ticket sale through Saturday totaled 7,995," said Miss Korblick. "Last year 9,938 tickets had been purchased by the first home game."

SHE FEELS there is no definite reason for this season's decrease in sales. "Possibly the students suffer from a lack of money, but more than likely most just haven't made it to Williams Arena to buy them," she said.

The total student sale last year was 13,116. Miss Korblick hopes today's final day of sales will boost the straggling total closer to last year's mark.

FFFFFFF . . .

(Continued from Page 16 for the prizes. Every entry must include the student's name and ID card number.

This year's prizes total over \$80. There will be four winners at the contest's end.

The Prize List Includes:

200 U.S. Savings Bond	University National Bank
\$10 gift certificate	Huntley's Limited
\$10 gift certificate	Minnesota Co-op
\$5 gift certificate	Campus Cobbler
\$5 gift certificate	Al Johnson's
\$5 gift certificate	Discount Records
\$5 gift certificate	Gray's Drugs
\$5 gift certificate	Perine's
\$5 gift certificate	Sheffield's Flowers
\$5 gift certificate	Ski Den

BARBER SHOP

Oscar's Barber Shop

5 Barbers to Serve You
1302 4th St. S.E.
333-9251

Harvard Barber Shop

604 WASH. AVE. S.E. 331-3739

Mitchell steps in as U drum major

Dick Johnson, high stepping major of the University Football Marching for the last five years, is stepping down.

He will be replaced by James Mitchell, former drum major for the North High School Band.

Grad student William Travis will fill the Gopher suit again this year.

University Bandmaster Dr. Frank P.A. Bencrisutto will have a new assistant, Richard J. Jackoboice, who will work with the marching band during the football season and with the symphonic bands for the rest of the school year. Jackoboice comes from Cornell University, Ithaca N.Y., where he worked with the Cornell marching band.



Mitchell

This fall the Minnesota band has grown from 210 to 240 members. The band, with a marching block of 80 members, will be one of the largest in the country, according to Bencrisutto.

Tennis meeting

There will be a meeting for all varsity and freshman tennis candidates this afternoon at 4:30 in 215 Cooke Hall.

AVALON
LAME ST. & BROADWAY
215-2157

ADULTS ONLY
CONTINUOUS FROM 2 p.m.

THE WORST CRIME OF ALL

Tales of a Salesman

DO YOU HAVE HOLES IN YOUR POCKETS?

If money burns a hole in your pocket, Student Employment Service has a part-time job to keep your pockets somewhat full. Among the thousands or so jobs now available, there is an urgent need on campus for:

- General Food Service Workers Both men and women
- Parking Lot Attendants—Men
- General Laborers—Men
- Office Help—Men and Women

STUDENT EMPLOYMENT SERVICE . 30 Welling Hall

PHY ED SUPPLIES

Converse Basketball Shoes	9.50
Jack Purcell Tennis Shoes	9.50
P.F. Oxforbs	5.95
Athletic Sox	3 for 2.00
U of M Sweat Shirts	3.25
Touch Football Shoes	6.95

Supplies for —

Handball Squash Golf
Table Tennis Tennis Skiing

Hours:
9:30-5:30
Mon. & Thurs.
to 6:00
Sat. to 5:00

The Ski Don
SPORTING GOODS

724 Washington Ave. S.E. 331-2310
Opposite Memorial Stadium
Next to University Nat'l Bank

Hold that crease?

You bet it will. If the fabric is one of the great, new permanent-press blends of 2-ply polyester and cotton masterminded by Galey & Lord. For the new dimension in collegiate slacks, look to

Galey & Lord



VAN HEUSEN "417"

TRAVELS WHERE THE ACTION IS!

For the man on the go, a shirt that can get him there in carefree style... "417" Vanopress. Permanently pressed, this traditional fashion never needs ironing. V-tapering assures elegant fit and sharp, virile lines. Precisely-cut tab or button-down collar gives a finishing touch for action!

for added self assurance, try



Passport
360

the influential line of men's toiletries. You'll go for its brisk, clean scent and rugged overtones!

VAN HEUSEN
younger by design

NSA report...

(Continued from Page 13)
the Congress "generally seemed to be very excellent," he said. Edstrom also criticized "the one-sided speaker program."

SALTERMAN said the amount of legislation should be limited at future Congresses: "The tremendous volume of legislation with which delegates were confronted during the plenary session may have made it difficult for the delegates to make intelligent decisions." Wadley, who has attended 5 NSA Congresses, said this last one had much less controversy than the others and that "significant progress in the direction of greater representivity and accountability" was made.

He pointed out that "two constitutional amendments, both providing for referral of selected issues to the campus constituencies,

SOME KEY CONGRESS VOTES

(Delegates: Martin Berg, Bob Canfield, Donna Goehle, Howard Kaibel, Hans Knoop, Jane Miller, Bill Newell, Dick Salterman, Rick Theis.)
Alternates: David Edstrom, Peg Foraman, Joel Gruhn, Irene Hadley, Jo Ann Hayenga, James Miller, Denis Wadley, James Wolf.)

Acceptance of the credentials of Eugene Groves as delegate from Roosevelt University.

FOR: Berg, Kaibel, Knoop, Jane Miller, Newell, Salterman, Theis.

AGAINST: Canfield, Wadley.

Constitutional amendment requiring previous enrollment at school a delegate represents at the Congress.

FOR: Berg, Kaibel, Knoop, Jane Theis, Wadley.

AGAINST: Kaibel, James Miller.

Amendment to drug resolution calling for legalization of LSD.

FOR: Foraman, Goehle, Gruhn, Kaibel.

AGAINST: Berg, Hayenga, Knoop, Wadley.

Drug resolution as amended, containing the above, calling for legalized marijuana and further research.

FOR: Foraman, Goehle, Kaibel.

AGAINST: Berg, Hayenga, Knoop, Theis, Wadley.

ABSTENTION: Gruhn.

Constitutional amendment requiring the submission of 3 Congress resolutions to member schools for confirmation or rejection as NSA policy.

FOR: Foraman, Goehle, Kaibel.

AGAINST: Berg, Hayenga, Knoop, Theis, Wadley.

Resolution on Vietnam, criticizing government policy, calling for cessation of bombing, negotiations with the Viet Cong, and a policy of withdrawal from Southeast Asia.

FOR: Canfield, Hadley, Kaibel, Knoop, Jane Miller, Theis, Wadley.

AGAINST: Berg, Goehle.

President of NSA, Eugene Groves (Roosevelt University), the "liberal" candidate, vs. Danny Boggs (University of Chicago Law School), the "conservative."

GROVES: Berg, Canfield, Kaibel, Knoop, Jane Miller, Theis, Salterman.

BOGGS: Goehle, Newell.

were given majority but not two-thirds approval, and so were referred to student governments for action."

IF THERE WAS a single universal opinion at the Congress, Berg said, "it was that there is a serious need for educational reform. It was apparent, however, that the students hadn't come to

many more conclusions on what type of action is needed than have the professional educators.

"The only way NSA can keep up with the expanding demands of the delegates and member schools, and the best way to influence the student movement at large, is to increase the educational experience of the Congress," Berg said.

WHAT'S DOING

Today

University Chorus — 8 p.m. Charles Schwartz, director. Begin rehearsals. 325 Science Classroom Bldg.

U of M Skydivers—7 p.m. Business meeting and information for interested persons. 327 Union.

MSA International Affairs Commission. Icelandic Student Leaders Delegation — 3:30 p.m. Coffee Hour. 320 Union.

University Folkdancers Teaching for Beginners—7 to 8 p.m. Union Game Room. Folkdancing — 8 to 10:30 p.m. Union Mall or

Union Game Room if rain.

FOUNDATIONS

Paul Brith Hillel Foundation School of Learning—2:15 p.m. Elementary, Intermediate and Advanced Hebrew. Hillel Study Room. School of Learning—3:15 p.m. Rabbi Milgrom. "Modern Jewish Humanities." Hillel Study Room. Out of Town 'Students' Night—6 to 10 p.m. 1521 University Ave. S.E.

Intervarsity Christian Fellowship chapter meeting—12 noon. Coffee Time. "What's Your Line." 320 Union.



BRITISH WALKERS
MADE IN THE U.S.A.

Burnt Ivory
Boot

Hand-burnished
to a deep-toned glow.

CAMPUS COBBLER

DINKYTOWN

OFFICIAL DAILY BULLETIN

Vol. 68 September 27, 1966 No. 22

ALL STAFF AND STUDENTS
Inter-campus Bus, Line 13
From September 19 to June 9, except during vacation periods, buses leave both campuses Monday through Friday as follows:
7:00 a.m.—7:20 a.m.—10 min. intervals
7:20 a.m.—10:00 a.m.—5 min. intervals
10:00 a.m.—6:30 p.m.—10 min. intervals
6:30 p.m.—7:30 p.m.—20 min. intervals
Evening buses Monday through Friday

run as follows:
Leave Minneapolis Leave St. Paul
8:45 p.m. 9:05 p.m.
9:45 p.m. 10:05 p.m.
10:45 p.m. 11:05 p.m.
Beginning Saturday, September 24, the Saturday bus schedule will be as follows:
Minneapolis campus:
7:00 a.m.—1:55 p.m.—20 min. intervals
1:55 p.m.—4:55 p.m.—20 min. intervals
St. Paul campus:
7:00 a.m.—1:40 p.m.—20 min. intervals
1:40 p.m.—5:10 p.m.—20 min. intervals
There will be no bus service on Sundays or holidays.
No fare will be charged passengers, with exception to those boarding the bus at stops other than the Minneapolis campus at 15th Ave. S.E. and Pillsbury Terminal, or at 4th St. and 16th Ave. S.E., or on the St. Paul campus at the Carter
(Continued on Page 19)

WHAT'S ON THE MENU?

TUESDAY, SEPTEMBER 27, 1966

MAIN CAFETERIA* Lunch served 11:10 a.m. to 1:30 p.m. Mon. thru Sat.

SPECIAL COUNTER PLATE LUNCH:
Baked Macaroni and Cheese with Pork Link Sausages 59¢
Chilled Tomato Juice, Buttered Broccoli

A LA CARTE COUNTER SUGGESTIONS:
Soup—Large Bowl of French Onion Soup with Crackers 20¢
Chicken Fried Top Round Steak with Mushroom Gravy 60¢
Union Chow Mein with Crisp Noodles and Steamed Rice 45¢
Escalloped Turkey and Sage Dressing with Fricassee Gravy 45¢
Oven Baked Beans 25¢
Cold Plate—Assorted Cold Meats, Cheese, Relish, Potato Salad, Roll and Butter 60¢
Freshly Baked Pies—Pumpkin with Whipped Topping, Apple, Raisin or Cherry 20¢
Fruit Jello with Whipped Topping 15¢
Lemonade—Tall Refreshing Glass 10¢
Good Coffee (2nd cup Free with Lunch or Dinner) 10¢

FOUNTAIN GRILLE—
Serving Monday thru Friday—9:30 a.m. to 4:45 p.m.
GOPHERETTE—
Serving Monday thru Friday—10:30 a.m. to 3:30 p.m.
SKI U MAH ROOM—
Serving Monday thru Friday—10:30 a.m. to 2:00 p.m.
NORTH STAR ROOM—
Complete Vending Service Daily—7:00 a.m. to 10:00 p.m.
GOPHER HOLE
Vending Service Daily—7:00 a.m. to 10:00 p.m.
*Cafeteria also serves Breakfast 7:00 a.m. to 10:35 a.m. and Evening Dinner 4:45 to 7:00 p.m. Monday thru Friday.

 Coffman union
Food Service

Need Some
Extra Cash
for Tuition?
Books?
or Carfare?
We have several
**GOOD
PAYING**
Jobs, that can be
TAILORED
TO MOST ANY
CLASS SCHEDULE
There is
No Charge
to you
so give us a call
FE 2-0421
Personnel Department
OR COME IN
BAKER
Properties Inc.
510 Baker Bldg.
An Equal Opportunity Employer

livelier lather
for really smooth shaves!



lasting freshness
glides on fast,
never sticky! 1.00



brisk, bracing
the original
spice-fresh lotion! 1.25



Old Spice...with that crisp, clean masculine aroma!

Bulletin

(Continued from Page 18)

Ava. and Coffey Hall bus terminal.
● East and West Bank bus, Minneapolis Campus, Line 24
Effective September 19, buses will leave the East Bank terminal (Architecture Building) and the West Bank terminal (Classroom Building) at 5 minute intervals from 7:30 to 8:30 p.m., and at 10 minute intervals from 8:30 p.m. to 5:30 p.m., Monday through Friday.
Beginning September 24, the Saturday schedule will be as follows:
Leave East Bank:
8:00 a.m.-12:00 noon—30 min. intervals
Leave West Bank:
8:15 a.m.-11:45 a.m.—30 min. intervals
No fare is charged passengers on this line.
● Fairgrounds bus, St. Paul Campus, Line 5
Effective Monday, September 26, a bus will operate Monday through Friday between the fairgrounds and the St. Paul campus on the following schedule:
Leave fairgrounds:
7:00 a.m.-9:00 a.m.—10 min. intervals
9:00 a.m.-4:00 p.m.—15 min. intervals
4:00 p.m.-6:00 p.m.—10 min. intervals
No fare will be charged passengers on this line.
● Walker Library Hours 1966-1967
Regular Hours:
Monday-Friday 7:45 a.m.-10:00 p.m.
Saturday 7:45 a.m.-5:00 p.m.
Sunday 2:00 p.m.-6:00 p.m.
Extended study hours, Reserve Reading Room and Basement Lobby
only Sunday 6:00 p.m.-10:00 p.m.

Changes from regular schedules
August 22-September 23
Monday-Friday 7:45 a.m.-5:00 p.m.
Saturday-Sunday closed
September 24 (Reserve Reading Room and Basement Lobby) 7:45 a.m.-5:00 p.m.
September 25 closed
September 26-27 Regular hours
September 28 7:45 a.m.-5:00 p.m.
October 1 (Thanksgiving) closed
October 2-3 7:45 a.m.-5:00 p.m.
October 4-5 closed
October 6-7 Regular hours
October 8-9 Final Examination Period, Dec. 10-16
October 10-11 Regular hours
October 12-15 7:45 a.m.-10:00 p.m.
(Reserve Reading Room and Basement Lobby) 7:45 a.m.-5:00 p.m.
October 16-17 10:00 p.m.-11:00 p.m.
(Reserve Reading Room and Basement Lobby) 5:00 p.m.-10:00 p.m.
October 18 (Reserve Reading Room and Basement Lobby) 7:45 a.m.-5:00 p.m.
October 19-23 7:45 a.m.-5:00 p.m.
October 24-26 closed
October 27-30 7:45 a.m.-5:00 p.m.
December 31-January 2 closed

ALL STUDENTS
● Fall Quarter Off-Campus Student Teaching
All Secondary Academic Education students planning to student teach off-campus in mathematics, science, social studies, foreign languages, language

arts, during fall quarter must attend one of the following orientation meetings on Thursday, September 29:
10:15 a.m.—155 Chemical Engineering Building
1:15 p.m.—325 Science Classroom Building
● Elementary and NKP Student Teaching
All students planning to do Elementary and NKP student teaching fall quarter must attend the following orientation meeting on Tuesday, September 27:
9:15 a.m.—201 Westbrook Hall
● Framed Pictures for Student Rental
A Student Rental Collection of framed pictures is available to all students registered for Fall Quarter for use in their rooms. Please note change of time for rental period:
Time: 9:00-11:00 and 2:00-4:00, Monday through Friday, for two weeks only, September 28 through October 7. No pictures may be rented for Fall Quarter after October 7.
Place: 306 Northrop Memorial Auditorium
Fee: 50¢ per picture for each quarter
Limit: 2 pictures per student
Bring fee statement for Fall Quarter and I.D. card. Rules are posted in Rental Collection Room. Inquiries regarding rentals may be made by calling extension 3225.
GRADUATE STUDENTS
● Required Language Test for Advanced Degree Candidates
Language tests required for advanced degrees will be given Thursday, October 6. Students repeating the language test must present a receipted \$5.00 fee statement upon admission to the examination.

The French and Spanish examinations are mainly oral, but are preceded by a brief written test on basic elementary material to determine eligibility for the oral examination. The written test begins promptly at 1:30 p.m. in 200 Folwell Hall.
The German test is written and starts promptly at 2:30 p.m. in 308 Folwell Hall. The Latin test is written and begins at 3:30 p.m. in 310 Folwell Hall. Sample copies of old German, French, and Spanish examinations are available in the Reserve Room of the University Library.
Forms for the examination are available at the Graduate School Office, 316 Johnston Hall.
Students who have completed a minimum of 15 credits in a foreign language with the grade of "A" in the third quarter or a minimum of 20 credits with a grade of "B" in the fourth quarter at the University of Minnesota within the past five years, may be excused from the language proficiency test, regardless of grades received in previous quarters of the language. They should present their transcripts to the language department concerned for certification.
MEDICAL STUDENTS
● Medical College Admission Test and Minnesota Medical Aptitude Test Battery
All pre-medical students who hope to enter the University of Minnesota medical school in fall 1967, must take two tests which will be given in October. October 7 is the deadline for applying to take the Medical College Admission test which will be given at the University on October 22. Application forms and

bulletins of information are available in the Student Counseling Bureau, 101 Eddy Hall, and must be sent to the Psychological Corporation in New York City before October 7.
The Minnesota Medical Aptitude Test Battery will be given from 8:00 a.m. to noon on October 8 in 201 Westbrook Hall. The fee for this test battery is \$3.00. All students planning to take this battery must pick up a fee statement in 101 Eddy Hall and pay their fee to the University bursar in advance of the test date. A paid receipt will be required for admission to the testing room.
IT STUDENTS
● Placement Meetings for Students Expecting to Receive Degrees in 1966-1967
Two placement meetings will be held for Institute of Technology students planning to graduate with a Bachelor's degree in December 1966, March 1967, June 1967, or I and II Summer Session 1967. All such students should arrange to attend one of these meetings. All graduate students who plan to interview through the Placement Office should also plan to attend one of these meetings. It is very important that all bachelor degree candidates attend one of these meetings as interviews with companies during Fall and Winter quarter will be given out at this time. These meetings will not be repeated during the year. For December and March graduates interviews with visiting companies begin Monday, October 10.
DATE TIME PLACE
Wednesday, Sept. 28 3:30 p.m. ME 4
Thursday, Sept. 29 3:30 p.m. ME 4

BUYERS SELLERS AND
of Goods and Services Use
THE WANT ADS
STOP IN AT:
Room 11 Murphy Hall
Tele. 373-3385
Cash Rate: \$.50 per line 1st day,
\$.35 per line additional days.
Charge Rate: \$.60 per line 1st day,
\$.40 per line additional days.
Deadline: By noon day preceding publication.

FOR RENT
E. RIV. TERR. Twin B.R., study, gar. & use of house. 373-2255, 336-0875. S28

RENT IT CENTER
TV—Phono.—Radio—Misc. Items.
COLOR TV, 419 14th Ave. S.E. FQ

FARM CAMPUS: Lge. 2 bdr., bath, 645-5298 and 451-2738. UG

4 & 3 B.R. APTS. Newly furn., cptd. & redeco. Gar. Bryn-Mawr area. Nice for 2 or 3 students. 929-6987. S30

ROOM & bath, upper dplx. Gar. Rent: See to appreciate. 10 min. drive to U. FE. 6-8586. S27

APTS FURNISHED
621 5th Ave. S.E.—\$111 4th St. S.E. 1 B.R. See or call 4:30-6:30. 335-4085 or WA. 6-2092. UC

ATTN: Grad student couple: Lge. 2 rm. apt. Huge, B.R. Very attractive. Furn. & decorated. Clean & quiet. Near 1 way route to campus. \$17.50 wk. TA. 7-3558. S27

MEN—Grad students pref. Apt. & gar. Good loc. 333-2668. \$80. O3

2619 S. 7th St. 4 girls, nr. St. Mary's Hosp., 2 b.r., lower dplx. comp. furn. Avail. Oct. 1. TA 3-1483. S30

11TH AVE. S. Large 2 bdrm. newly remodeled, near bus & shop, util. pd. 333-4665 evenings. O3

FURN. or unfurn. 1 bdrm., \$115. 331-3589. 1100 Como Ave. S.E. S28

APTS UNFURNISHED
335 5TH ST. S.E. 2 B.R. upper dplx. \$95 + util. 869-6058. S30

CEDAR AVE. S., 5028: 3 bdr. upper dplx. overlooking Lk. Nokomis. Frpl. Newly cptd. L.R. & D.R. New kit. stove, refrig. Gar. Washer & dryer. \$180. 724-7088. O3

HOUSE, 6 b.r., 2 baths, unfurn. W. Bank, \$165. 823-6264. O3

NR. W. BANK, 6 rms., bath, 4-5 students. Partly furn. 451-6605 evs. or 333-2577. S28

ENTIRE UPSTAIRS, bath, much privacy. Reas. 522-1186. S28

ROOMS FOR RENT
MEN, 21 yrs. or over—ROOMS, share or sgl. \$30 to \$55 mo. West Bank. 1810 Wash Ave. So. Mr. LeRoy, FE. 6-5026. S30

DOUBLE & sgl. rooms & gar. St. Paul near St. Thomas College. Men only. 699-9788 after 6 p.m. S30

SGL. ROOM for man. Walking distance to U. FE. 2-5813. O3

HOMES FOR SALE
10 MIN. TO U. S.B.R. rambler in choice loc. Cptd., drapes. L.R., lge. kitchen, w/disposal & all copper-tone built-ins. Many other features. \$230 Pierce St. N.E. 781-2460. S30

FOR SALE by owner: 5 rm. house, lge. B.R.'s, fenced yard, gar. Mortgage can be assumed. 732-6234 evs. Longfellow Field area. S30

ROOMMATES WANTED
OCT. 1-3 guys share 5 bdr. house. 33rd & Pillsbury, M. Bronk. 331-3974. S28

GRAD. STUDENT to share apt. w/ female roommate 24-30. Avail. Oct. 1. 333-2524. S28

1 MALE grad. shr. 2 br. luxury apt. w/1. 699-1450. O3

GIRL GRAD, nice WB apt, 336-0035 after 5. O3

MALE to share apt. with 3 sophomores. I.T. student preferred. 415 Erie St. Apt. 2F after 5 p.m. S29

NEED 3 MEN to share. 4 B.R. Apt. with 1. 514. 8th Ave. S.E. 374-5737. S28

MALE to share new apartment. Close to "U." 335-0411. S28

1 GIRL to shr. emp. apt. w/3. 632-1782, 484-2065. O3

FOR SALE
SLIDE RULES
Scientific Instrument Co. 10" Log-Log Duplex—25 Scales—White Plastic—Leather Case—Instruction Book—Regular \$27.50 postpaid \$14.95

ANALYTICAL BALANCES
Pine in Glass and Wood Case Less Weights \$20.00

HARRIS MACHINERY CO.
501-30th Ave. S.E. 331-1829 S30

FOR SALE: 4 black kittens, part Siamese, \$1.50. Call 331-5252 evs. S27

SAVE—FACTORY TO YOU UNPAINTED FURNITURE
Dress - Chests - Bookcases - Chairs TA. 4-1033 13 WEST 26TH ST. FQ

MICROSCOPES: Sales & Repair. New & Used. BOWER & HAACK, 1826 Como Ave. S.E. 331-5791. FQ

SANFORD Contract avail. 1st week of school. 339-0931. Room 106. Snc. S30

5 YR. OLD Norge refrig. w/Freezer. 57x24". Perf. cond. \$95. 588-2113. S27

THERMOFAX machine w/40 worth of paper. \$60. 721-6237. S30

KOREAN MOVIE POSTERS—\$1 ea., 50 to choose from. Call 920-2350. S27

ORIENTAL Screens—3 panels painted on silk, 18th century. 920-2850. S27

SOFA, easy chair, dining table, chairs, refrigerator, stove, rugs. Must sell! 331-5712-373-5459. S28

DORM CONTRACT FOR SALE. Comstock Hall Room 244W, Roberta. O3

LARGE RED VELVET COUCH with chair, only \$20. Ph. 331-3708 after 5. S28

15 CU. FT. PHILCO freezer, 1 yr. old, \$175; lge. Frigidaire refrig., \$70; Danish mod. style dining rm. table w/5 chairs, \$125; 1962 Rambler Classic sedan, recently overhauled, new muffler & tailpipe, almost new snow tires, \$700. 647-3547 Deane. S28

STEREO Tape Recorder & extras, still on warranty, \$170.00. Call Paul at 474-6516 after 6. S27

WEBCOR Regent tape recorder, like new. 633-6211. O3

STEREO Console, ext. speaker, \$70. Evs., 339-8729. O3

STUDY DESK, 3 dr. wood, like new! \$25. 933-4131. O3

MAHOGANY Dbl. bed frame, \$10. Call Pat aft. 2:30. 338-5444. O3

HELP WANTED
WAITRESS: EVES, NICK'S BAR, 1501 S. 6TH ST. FE. 8-0188. UC
PART TIME stock room S. S. Kresge, Southtown—888-6665. S30

MALE STUDENTS for 1 hr. psychological experiment. 1 day only. Approx. \$5. 331-4141 ext. 5008. Must provide own trans. Honeywell Inc., 2345 Walnut St., St. Paul, Minn. S30

COLLEGE STUDENTS to drive school bus. Working schedules available to sit with class programs. 633-3001 or 645-3959. Columbia Transit Corporation. FQ

BILLER part time evs. Must type 50 wpm. Mid-Continent Freight Lines, 11 Oak St. S.E. 339-7831. S30

MALE WANTED to help handicapped college boy. Room, board & salary. 10 min. from campus. 789-7388. S30

PART TIME HELP
Local store has opening in sales dept. for a sharp young man willing to work 3 evs. 5-9 p.m. and Sat. 9-5 p.m. Car necessary. For interview call 544-2776. O7

STUDENT'S wife wanted as helper for physician's family of 3 children. Little cooking. Air-cond. furn. apt. + salary. 1 child O.K. 739-4895 evs. S30

WAITRESSES—Eves. Can arrange 12-20 hrs. wk. Apply Valli Pizza aft. 5. Dinkytown 331-1561. S27

MOTHER'S helper. Rm. & bd. + salary for lt. hawk. & babysng. 935-9466. S30

PHONE WORK
for ambitious young man or lady. Attractive salary + incentives. Priv. office. Hrs. 1-5 p.m. Will train beginner w/good phone voice. Call Mrs. Shear at 435-7653 evs or 377-4911 during day. Builders and Remodelers Inc. S30

STEREO SALES
Appn't furn. \$50-\$100 wk. Work own hrs. Car necessary. TA. 7-5705. S30

MARQUETTE CORP. has openings 2 nites a week & Sat. Nr. \$80 wk. 346-5429. S30

GOOD DRIVER to make early morn. deliveries. Must have chauffeurs lic. Call Brown Photo, 522-3651. S30

NIGHT AUDITOR—DESK CLERK 11 p.m.-7 a.m. 3 nites wk. Plenty of time avail. for study. Call after 3 p.m. 588-4665. S30

WAITRESSES, morn. 7-9 or noon 11-1. Bridge Cafe, 1500 S.E. 4th St. S27

GIRL to live in weekends help with 2 children. Transp. provided. 544-1129 S30

SOME JOBS available part & full time. 15-20 hr. wk. guar. For appt. call 789-1877. S30

FULL or part time. Near. E. Henn. shopping area. Elect. Cords, Inc., 207 4th St. S.E. 333-0005. O7

MEDICAL Laboratory Tech. Eves. and night call & Sunday work in a smaller hosp. every other night & evn. Alternative schedule just every other weekend. Work load & schedule suited for a student. Medical technician (A.S.C.P.) pref. A good military lab & blood bank tech. acceptable. Contact pathologist, Eitel Hospital, 335-5241. S30

PART TIME \$2.25 hr. All the hours you want. Bloomington, Richfield area. Open to men & women. Call Jerry Tuffel 699-7763. S28

MOTHER'S helper. Girl for dinner time help & child care. 3 evs. wk. Near U. bus. Salary + meals. 338-1389. S30

BUS BOYS for sorority. FE. 5-4022. S27

NURSES AIDES, PART TIME, 2 DAYS WK. ALSO LPN's, NEAR U. CAMPUS. HRS. AVAIL TO FIT CLASS SCHEDULE. FE 3-3664 O3

MAINTENANCE MAN, pref. early morn. hrs. if possible. Hyatt Lodge Motel, 8625 Waysata Blvd. 544-3601. O3

PART TIME MAID, hours flexible. Hyatt Lodge Motel, 8625 Waysata Blvd. 544-3601. O3

MALE DESK CLERK, 4 nites week. Hyatt Lodge Motel, 8625 Waysata Blvd. 544-3601. O3

NITE DESK CLERK, \$1.85, 3 nites. Cross Keys Motel, TA. 7-4056. UC

3 BUSBOYS, \$20 mo. + 3 meals per day. Alpha Delta Pi, 336-3101. UC

BABYSITTER for 3 yr. old. Reliable girl, about 15 hrs. wk. Reg. hours. Pay commensurate with reliability. Prof. Kahne, 373-5746, 331-8767. O3

NEEDED
MALE & FEMALE group workers for Loring - Nicollet Community Center, aft. & evs. M-S. Exp. w/elementary or teens helpful. Call 332-0645 for interview. S30

BUS BOYS WANTED immed. Kappa Kappa Gamma sorority, 329 10th Ave. S.E. 335-8307. O3

BUS BOY for sorority, 928 S.E. 5th St. Eves. meal, 5 day wk. Good pay. \$31-2056, FE. 3-0298 House Director. S28

WOMAN for pt. time typist aft. & some Saturdays. Work involves mailings & some gen. corres. Loc. nr. U. Call Lynn Olson, 331-7715. O3

BUS BOYS for Sorority. 331-5112. UC

AUTOS FOR SALE
'68 VW. Good cond. New tires, brakes, battery. May be seen on campus. 537-6488 after 6 p.m. S30

'65 JAGUAR XK 140 convert. Good cond. New top & paint. \$995. 225-3874 S30

1960 FALCON 4 dr. Auto. trans. good tires, new btry. \$250. 454-4143. S30

'61 ENGLISH Escort Ford wagon. Runs well. New points, plugs & btry. Good trans. WA. 7-9058. Bill after 6 p.m. S30

'61 SPRITE. Excel. cond. 729-2574. S30

'60 PONTIAC Bonneville convert. PB. PS, auto. trans., white w/red interior \$550. 865-9794 after 6. S30

'65 PONTIAC Hearse, 4-track stereo tape player, bed & bar. \$583. 644-4340. O3

1964 MGB. Very good condition. White with wire wheels. 30,000 mi. Price open. 331-5694. Q10

'60 FIAT 1100 & dr. sedan. \$235. 331-9444. S29

'63 VW. Radio, heater, new tires, ski rack. \$975. 645-5283. O3

1962 CORVAIR conv., white, bucket seats, 3-speed, 23 mpg. clean. Call Dave Skelton 331-1106 after 5. O3

1960 CHEV. 6, 4 dr., auto.trans., PS, radio, new tires, battery, clean, approx. 50,000 mi., good woman's car. 451-6482. S29

'61 SPRITE, excel. cond. 646-5690. S27

'62 MERCURY, good cond. Accept best offer. 633-6464. O3

'60 CHEV. Impala 2 dr. hrdtp. V-8, auto., PS & PB. 1122 Como, 331-7485. O3

MOTORCYCLES & SCOOTERS
SALE ON VESPA SCOOTERS!
\$225 to \$425
\$50 down, \$17 per month
CUSHMAN, 2909 E. Franklin, Mpls. UC

1966 YAMAHA, 1,500 ml., new cond. 454-3513. S30

'66 TRIUMPH T 120 R (62 hp), 6,000 mi. I can't ride it in the army but I'll help you finance it. Mickey Lord. GR. 4-9657. S28

1966 SUZUKI X-6 Hustler. Good cond. \$500. UN. 9-8157. UC

1964 50cc HONDA. Like new. Make offer. John 729-3458 after 7. S30

YAMAHA 250 YDS 3. Asking \$400. Roger Meisner, 373-3341 days. O3

'68 VESPA G.S. New condition. Excel. transportation. TTH. 522-1601. O3

1964 HONDA 305 Scrambler. \$575.00. Owners graduating. 331-3809. S29

'65 LAMBRETTA, lo. ml. 825-8089. O3

'66 YAMAHA 60, new, no mileage, won in contest, \$250. 522-3132. S28

'68 HONDA 160 cc, 900-mi., \$400. 377-6383. O4

TYPEWRITERS: Rent, Sell, Repair. KIRK, 617 S.E. 14th Ave. FE. 1-7277

TYPING & MIMEOGRAPHY
THESIS — Stencil & Ditto. 646-6405. FQ

EXP. TYPIST — PROMPT — 724-1963. FQ

TYPING & instant copying. 929-9470. FQ

FAST, reas. Ph.D. Exp. IBM. 866-2456. FQ

FAST, reas. Ph.D. exp. 533-3234 Pat. FQ

TYPING—615 Oak St.—331-3034. FQ

ACCURATE TYPIST — 529-1914. FQ

TYPING—30c incl. carbon. 698-6434. FQ

EXP. TYPIST—IBM exec. typewriter. Sp. in Masters, Ph.D. 521-6629 aft. 5. FQ

TYPING: Exp. Prompt. WA. 6-5331. FQ

TYPING, any job, any amount, carbon ribbon if desired. 335-8114. FQ

EXPERIENCED TYPIST — 522-2330. FQ

EXP. TYPIST, term & thesis. 533-6235. FQ

EXPERIENCED TYPING — 488-5337. FQ

EKC. TYPING. Immed. serv. 331-5465. FQ

TYPING IN MY HOME—484-1436. FQ

EXPERIENCED TYPING—336-7178. FQ

TYPING my home. 12 yrs exp. 645-8920. FQ

Hanley's "TypeRight" — 938-4557. FQ

EXPER. dependable thesis typing, mimeographing & duplicating. Donalene, 824-1008. FQ

PROF. TYP., Intercampus bus line. Call Lois, MI 5-1998. FQ

ORCHESTRAS
BOB LEE COMBOS
545-5477. FQ

THE MARV LEVINE ORCHESTRA
"All Campus Favorites" 699-0933



University
BOOKSTORES

***For Your Textbooks
For College Supplies***

Nicholson Hall

Main Engineering

Coffey Hall

Coffman Union

Mayo Memorial

West Bank