

The Minnesota Daily

World's Largest College
Minneapolis, Minn., Tue

Vol. 58

MINNESOTA
HISTORICAL
SOCIETY

Aug 7, 51

No. 17

Big 10 Meeting Shows Problems CAN Be Met

By WILL SHAPIRA
Daily Sports Editor

Judging by the results of last weekend's Big Ten meeting on subsidization of athletes, the Look Magazine "scare" article of last week has turned out to be a bust.

Look came out with its piece titled "Football Scandal Hits the Big Ten" but nothing of the sort has occurred.

INSTEAD, THE LEAGUE commissioners and faculty representatives, headed by Kenneth "Tug" Wilson, sat down in Chicago's LaSalle Hotel, talked over the current problems, and came up with the basis for a future plan regarding financial aid to athletes as well as regulations for work programs.

Now it remains for the conference to act according to what it terms the White Resolution. This calls for a special committee to draft the necessary legislation discussed at the meetings.

The legislation will then be turned over to the faculty representatives of the league. They will study the proposed action for a period of 60 days, after which time a vote will be taken.

SINCE SUCH A procedure is time-consuming, it is not expected that the Big Ten will have its program in working order until next year—possibly next spring at the earliest.

Ike Armstrong, Minnesota's athletic director who attended the meeting, describes the new plan this way. "We will, in the future, grant aid to athletes on the basis of need," says Ike.

"We've had this special committee working on all sorts of possible solutions to the problem and now it appears we've hit on the final answer. Now all that remains is for the legislation to be drafted and for the schools around the league to approve."

ALSO DISCUSSED at the meeting was the extent of aid to an athlete. It was decided that limits should be uniform around the conference. This should help considerably in meeting the perennial problem of recruiting. Since one school can (if the new rules are passed) offer only the same and no more than the next, competition is likely to decline between schools bidding for the services of an outstanding high school athlete.

MEANWHILE, IT'S interesting to compare the Big Ten situation with the West Coast dilemma. Things are still tense west of the Rockies. The latest move has occurred up at the University of Washington—where the whole West Coast rumblings first erupted into an avalanche of accusations, investigations and quickly-meted out punishments.

The Huskies were earlier found to be operating a "downtown slush fund" which aided athletes financially, contrary to Pacific Coast Conference regulations. After brief but stormy sessions at Southern Cal and UCLA, the scene has switched to the north country again.

NOW THEY'RE asking Washington officials to come clean and please give the Conference the names of the boys who were helped out under the old "Evergreen Club" donations!

This should prove highly interesting to watch, for obvious reasons. Meanwhile, the Big Ten goes about quietly but competently mapping out its plan of action in dealing with the very same problems the PCC has so far bungled.

And as for the Look Magazine article, Minnesota's Armstrong phrases it quite well with "They're sort of left hanging on the line, aren't they?"

Stations to Carry Last in Series On State's Future

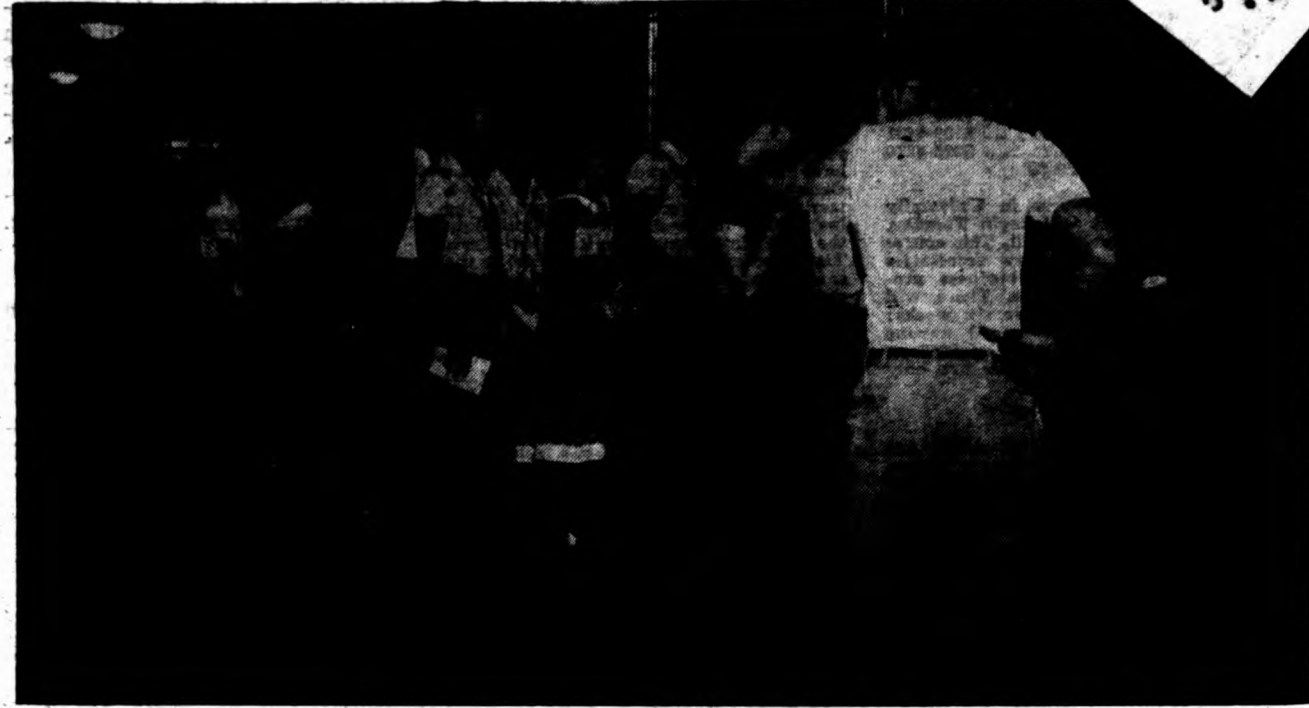
The last in a series of broadcasts entitled "Minnesota's Tomorrow: The Economic Future of Our Region" will be aired by Stations WCCO and KUOM in three programs this month.

"THE PROBLEMS of Our Region in National Perspective" is the topic of the first talk to be delivered at 5 p.m. Saturday on WCCO and 7 p.m. Monday on KUOM. The speaker will be John C. Weaver, dean, School of Arts and Sciences, Kansas State College, Manhattan, Kan.

The next program entitled "Education and the Economy" will be delivered by Pres. J. L. Morrill.

The last program, "How Much Education, Research and Development can our Area Afford?" will be given by John Cowles, publisher of the Minneapolis Star and Tribune.

THE SECOND program will be broadcast at 5 p.m. Aug. 18 and the third at 5 p.m. Aug. 25 on WCCO. KUOM's programs will be heard at 7 p.m. Aug. 20 and 27.



U Theater, Artists Course Season Ticket Sales Open

Eighty musical events will be included in the 1956-57 Artists Course. For University Theater's 1956-57 season five major productions will be put on. Season tickets for both the Artists Course and University Theater are now on sale by mail order.

Artists Course

Headlining the Artists Course series will be the Philadelphia Symphony Orchestra under the baton of Eugene Ormandy, the Canadian National Ballet Company and the Gosskor Boy's Choir from Stockholm, Sweden.

The Philadelphia Orchestra returns to the Artists Course after an absence of ten years. Eugene Ormandy, the conductor, is former conductor of the Minneapolis Symphony Orchestra.

THE NATIONAL BALLET of Canada is a relatively new company, which has earned praise for the vigor and precision of its leading dancers and corps de ballet.

The Gosskor Boy's Choir from St. Mary's Church, Stockholm, will appear on the Artists Course as part of its first American tour.

Rise Stevens, mezzo soprano of the Metropolitan Opera Company will make her third Artists Course appearance.

BARITONE ROBERT McFerrin, who was one of three artists featured in a special program presented in 1954-55, will offer his first full recital under Artists Course sponsorship. He is now in Italy appearing with Italian opera companies for the first time.

Robert Casadesus, noted French pianist, will also return to the Northrop stage and the Artists Course. Another pianist, Gina Bachauer, will make her first Northrop appearance.

ISAAC STERN, noted American violinist, is featured violinist in the series. He left July 30 to begin a 12-week European tour including three appearances at the Edinburgh Festival. Stern recently returned from a six-week tour through eight South American countries, a schedule he undertook six days after returning in May from the Soviet Union where he was the first American concert artist to perform in more than a decade.

Season tickets at \$10, \$8, \$6, and \$4.50 may be ordered by mail from the Artists Course ticket office, 105 Northrop Auditorium. A few single season tickets at \$15 and \$13 are available.

Season tickets represent a saving of 40 to 53 percent of the cost of tickets to the eight individual concerts.

Theater

George Bernard Shaw's "Androcles and the Lion" will open University Theater's twenty-sixth season Nov. 1 through 3 and 6 through 11.

The play will serve as a part of the theater's centennial commemoration of Shaw's birth.

OTHERS OF THE FIVE major productions will be Bertoldt Brecht's "Mother Courage," Nov. 29 through Dec. 1 and Dec. 4 through 9, directed by Arthur H. Ballet, assistant professor at University High School; "Finian's Rainbow," by Harburg and Lane, directed by Robert D. Moulton, instructor of speech, Jan. 31 through Feb. 2 and Feb. 5 through 10.

"Richard III" by Shakespeare, Feb. 28 through Mar. 2 and Mar. 5 through 10, directed by Kenneth L. Graham, associate professor of speech.

"Midsummer Night's Dream" also by Shakespeare, April 4 through 6 and 9 through 14, directed by Whiting.

YOUNG PEOPLE'S Theater is planning two plays for the season: "Buffalo Bill" by Auran Harris, Oct. 13 and 20 through 21, directed by Merle W. Loppnow, Theater business manager; "Noah" by Andre Obey, April 28 and May 4, directed by Ballet.

A special production of "Land of the Dragon" by Madge Miller, directed by Helen Aungst, Graduate student, will be presented Feb. 15 through 16 and 22 through 23 by the Scott Hall Studio Theater.

As a further commemoration of the Shaw centennial three of his plays will be presented in the Arena Theater in Shevlin Hall: "Mrs. Warren's Profession," Nov. 14 through 18; "Candida," Jan. 23 through 27; "Arms and the Man," May 15 through 19.

THE SCOTT HALL Studio Theater also will present a special production of "Love's Labours Lost" by Shakespeare on May 6 through 12 in the Shevlin Hall Arena Theater.

Tuesday matinee season tickets are now on sale for \$2 at the Scott Hall Lobby box office. A special freshman rate of \$1 is being offered.

Regular season tickets at \$4 may be obtained by mail order. Tickets go on sale about Sept. 17 at the box office.

Lines of impatient registrants—a sure bit of evidence that summer's almost over and at least some of the over 20,000 students are beginning to give a serious thought to next year's classes. Lines of junior college students in Johnston Hall waiting to pick up materials and tally wound down the steps to the first floor yesterday morning. But by afternoon the lines were shorter. Maybe the students were realizing that they still had two full months to register. Whatever the reason, things seemed back to normal.



Giving a pleasant change of scene to students who had resigned themselves to a summer of slickers and soaked notebooks was this ray of sunshine which streamed across the front of Ford Hall yesterday. Ford Hall should look about the same today too because the forecast is for mostly fair with little change in temperature. The high today will be about 85 degrees.

STATE HISTORICAL SOC. ST. PAUL 11, MINN. 58

Official Daily Bulletin

Students and staff are urged to read the Official Daily Bulletin as they are answerable for notices that affect them. Please note that notices must be received by noon two days prior to publication. All notices should be sent to the Department of University Relations, 218 Administration. Except for certain notices of campus-wide importance, notices will be printed only once.

Vol. 58 Tuesday, Aug. 7, 1956 No. 17

ALL STAFF AND STUDENTS

Daily Recreational Activities
 Tuesday, Aug. 7
 Union Record Lending Library.
 1 to 3 p.m. 229 Union.
 Educational Films. Area: Music Education, Films: Listening to Good Music, Playing Good Music, and Music in America.
 3 p.m. Nicholson Hall Auditorium.
 Union Ballroom Dance Instruction. (Single Lessons, 50 cents.)
 6:30 to 8 p.m. Union Game Room.
 Summer Session Symphony. Conductor, a Henry Denecke. Soloist, Calvin Marsh, Baritone.
 8 p.m. Northrop Auditorium.
 Wednesday, Aug. 8.
 Newsreel Theater.
 Noon. Northrop Auditorium.
 Excursion to the State Capitol and Minnesota Historical Museum. (Leave from the Seventeenth Ave. entrance of the Administration Building. No tickets necessary. Trip by public transportation.)
 1:45 p.m.
 Feature Film: Ugetsu, a Japanese film. (Summer session students admitted upon presentation of fee statement. University staff member admission 50 cents, tax included.)
 8 p.m. Northrop Auditorium.
 Thursday, Aug. 9
 Union Folk and Square Dance Instruction. (Single Lessons, 50 cents.)
 1 to 3 p.m. Union Game Room.
 University Theater: Midsummer Night's Dream by Shakespeare. (Single tickets \$1.20. Box office, lobby of Scott Hall.)
 8:30 p.m. Scott Hall.
 Friday, Aug. 10
 Excursion to the Minneapolis Institute of Arts. (Leave from the Seventeenth Ave. entrance of the Administration Building. No tickets necessary. Trip by public transportation.)
 1:30 p.m.
 University Theater: Midsummer Night's Dream by Shakespeare. (Single tickets \$1.20. Box office, lobby of Scott Hall.)
 8:30 p.m. Scott Hall.
 Friday Night Dance. (Summer session student and partner admitted upon presentation of fee statement.)
 9 p.m. to midnight. Union Terrace.
Fall Quarter Class Changes
 Additional Courses
 Hist. 224—Seminar: Modern European History (3 cr., #224-225-226). Ar, Steel.
 Soil 202—Research Probs (2-5 cr).
 Soil 203—Seminar (1 cr).
 Soil 204—Soil Colloids (3 cr; prereq AgBI 119).
 Additional Sections
 AgEd 1, sec 2—1 F, Hr 301.
 BA 74, sec 2—IV MWF, Vh 6.
 BA 77, sec 5—I MWF, Z 211.
 Econ 73, sec 9—IV T, Vh 307.
 Econ 80, sec 5—III MWF, Vh 2.
 Econ 81, sec 2—IV MWF, Vh 2.
 Econ 85, sec 2—III MWF, ForH 115.
 Cancellations
 Ba 180A.
 Fren 1, sec 2.
 Fren 1A, sec 2.
 GC 1a, sec 2.
 Mus 93.
Hour Changes
 AgEd 1, sec 1—1 Th, Hr 301.
 BA 134—1 MTWF, Vh 115.
 DyHu 107, Lab—VI-VIII Th.

Ent 51, Lect—VI MWF, Z 313.
 1, Lab—III-IV MWF, Z 208.
 2, Lab—VII-VIII MWF, Z 208.
 Fren 1B, Lect—III MWF, P 110.
 1—III Th, ForH 305.
 2—III Th, ForH 305.
 3—IV Th, ForH 305.
 4—VI Th, ForH 302.
 Law 144—VII-IX T.
New U Press Publication
 University Press announces publication of:
The Potentials About a Point Electrode and Apparent Resistivity Curves by Harold M. Mooney and W. W. Wetzel. viii plus 146 pages, cloth, 6 zincs. Text and set of 2268 Master Resistivity Curves, \$18; text alone, \$4.50; set of 2268 Master Resistivity Curves alone, \$15.
On Aug. 15.
Civil Service Vacancies
 The following full-time vacancies exist in the University Civil Service as of Aug. 3. Interested applicants may obtain additional information at 17 Administration Building. Employees are invited to inquire about promotion opportunities. Any full-time Civil Service positions open to students are listed with the Student Employment Bureau, 183 TSE. In the listing below, the symbol (M) refers to male and (F) to female.
ENGINEERING-MECHANICAL
 Associate Scientist (M) \$370-\$450
 Engineer (M) \$433-\$526
 Engineering Assistant (M) \$260-\$316
 Kinematic Apparatus Mechanician \$370-\$450
 Junior Scientist (M) \$342-\$416
 Junior Engineer (M) \$342-\$416
 Principal Engineer (M) \$547-\$667
 Senior Engineer (M) \$487-\$592
 Senior General Mechanic (M) \$292-\$356
 Senior Laboratory Machinist (M) \$342-\$416
 Utility Man (M) (Rosemount) \$222-\$270
CLERICAL-SECRETARIAL
 Clerk (F) \$175-\$218
 Clerk-Stenographer \$199-\$231
 Clerk-Typist (F) \$192-\$222
 Dental Clinic Attendant (F) \$189-\$231
 Editorial Assistant, Secretary (F) \$260-\$316
 Key Punch Operator (F) \$197-\$240
 Principal Account Clerk (F) \$292-\$356
 Principal Clerk (F) \$260-\$316
 Principal Secretary (F) \$222-\$270
 Secretary (F) \$260-\$316
 Senior Account Clerk (M, F) (R.R.C.) \$250-\$304
 Senior Clerk (M, F) \$205-\$250
 Senior Clerk-Typist (F) \$213-\$260
 Senior Secretary (F) \$240-\$292
SCIENTIFIC
 Junior Scientist (M, F) \$342-\$416
 Laboratory Technologist (M, F) \$316-\$358
TECHNICAL
 Electronics Mechanic (M) \$304-\$390
 Laboratory Technical Assistant (M) \$205-\$250
 Production Assistant (F) \$197-\$240
 Printing Assistant (Mul. Opr.) (F) \$213-\$256
 Proofreader (F) \$205-\$250
SUPERVISORY
 Assistant to the Superintendent R.R.C. (M) \$329-\$400
 Student Technologist Supervisor (F) \$316-\$358
PROFESSIONAL
 Accountant (M, F) \$292-\$356
 Editorial Assistant (F) \$260-\$316
 General Staff Nurse (F) \$281-\$316
 Junior Librarian (M, F) \$316-\$358

Librarian (M, F) \$342-\$416
 Principal Librarian (M, F) \$400-\$487
 Psychometrist (F) \$292-\$356
 Radio Program Supervisor (M, F) \$356-\$433
 Senior Dietitian (F) \$316-\$356
 Senior Librarian \$370-\$450
 Senior Student Personnel Worker (M, F) \$416-\$506
 Social Worker (M, F) \$329-\$400
 Student Personnel Worker (M, F) \$329-\$400
SPECIAL SERVICES
 Building Caretaker (M) \$222-\$260
 Clerk-Draftsman \$231-\$281
 Creamery Worker (M) \$231-\$281
 Food Service Worker (F) (Ag. Campus) \$175-\$218
 Hospital Janitor (M) \$182-\$218
 Hospital Aide (F) \$222-\$260
 Laborer (M) (Rosemount) \$205-\$250
 Printing Assistant (Multilith Opr.) (F) \$213-\$260
 Senior Laboratory Animal Attendant (M) \$250-\$304
 Senior Tabulating Equipment Opr. (M) \$260-\$316
 Storehouse Stock Clerk (M) \$340-\$392
 Telephone Operator (M, F) \$189-\$231
 Truckdriver (M) \$222-\$270
ADMINISTRATIVE STAFF
Employee Training
 The next training course in University Business Procedures will begin Tuesday, Sept. 4 at 208 Johnston Hall. This course is designed to acquaint new secretaries with standard University business procedures, policies, and rules. There will be two sessions a week for six weeks. Departments wishing to enroll anyone are urged to call ext. 6497 or 6895 as soon as possible, since there are only a few vacancies remaining.
CIVIL SERVICE STAFF
Regents' Scholarships
 Tuition free Regents' Scholarships are again available to Civil Service employees who want to take University courses related to their work. Sixty scholarships have been established for the fiscal year 1956-57. Twenty of these are offered for the fall quarter. You may apply for a scholarship if you are a full-time civil service employee of the University. You can apply to take one or more University courses which do not total more than six credits or meet more than six hours a week. These scholarships allow you time off from your job to attend class and permit you to register tuition free. The Civil Service Committee makes the final decision on all applications and awards the scholarships taking into consideration: relation of the course to your present job and promotional possibilities; your length of service; work load in your department; efforts you are making on your own initiative to acquire training; and availability of the same or similar courses in evening schools. Scholarships are not awarded to any one employee for more than three consecutive quarters. You can get full instructions and application blanks for Regents' Scholarships from the Civil Service Personnel Office, 14 Administration Building, or from its Training Division in 201 Johnston Hall. Return applications to 14 Administrative Building completely filled in with the necessary approval by the department head and dean or administrative officer by Sept. 3. Applications must be in by that time to allow the Civil Service Committee time to make selection of 20 scholarship winners before fall quarter begins.
ALL STUDENTS
Veterans Certification
 PL 550 veterans certification for July 1 to July 31 due during the first seven days of August. (If term-only students for period July 17 to July 31.) To obtain your benefits, the VA re-

quires that you fill out your part of the Form 1-1996a after you complete each period of training. The University completes this "Monthly Certification of Training" and forwards it to the VA, showing how much credit load you are carrying. The VA then sends you your check.
Procedure:
 1. Obtain a copy of Form 1-1996a. On the Minneapolis campus, do this at the information booth on the first floor of the Administration Building. On St. Paul Campus, do this at 220 Coffey Hall.
 2. Fill out the top part of the form. You must include your "C" or claim number or the form will not be accepted. Your signature must be in ink.
 3. Present this form at Window 18 on the first floor of the Administration Building on Minneapolis Campus, or at the counter in 220 Coffey Hall on St. Paul Campus.
 4. As you turn in the form, show your summer session fee statement and inform the clerk whether or not you are still attending all the classes for which you registered for this term. If you have stopped attending any of these classes, you are required to present a last date slip (Form A126) signed by the instructor involved, showing precisely the last date you attended that class. The necessary forms are available at the same window or counter at which you present your Form 1-1996a.
Commencement Information
 The packets containing information and announcements for the Aug. 16 commencement are now ready and may be picked up from 7:45 a.m. to 4:30 p.m., Monday through Friday, in the Alumni office, 205 Union through Aug. 16.
Admission Test for Graduate Study in Business
 The Admission Test for Graduate Study in Business will be given from 9 a.m. to 1 p.m. on Saturday, Aug. 18 in 101 Webhook Hall. Only students who have made application to Educational Testing Service and received a "Ticket of Admission" are permitted to take this examination. Students with questions concerning this may call ext. 585.

Registration Open For LSA Ashram

Registration is now open at the Lutheran Student House, 1813 University Ave. S.E., for the LSA's Ashram Friday, Saturday and Sunday at Onamia, Minn.

The theme of the Ashram ((an Indian word meaning "corporate spiritual quest") will be "The Life You Live."

Guest speaker Paul Helmer, professor of philosophy, will talk on "The Responsibility of Life." The "Purpose of Life" will be the topic of Don Anderson, assistant executive director of the Lutheran Student Foundation of Minnesota.

There will be Bible studies, discussions and recreation programs.

MCF Plans Chapel Hour

Minnesota Christian Fellowship will hold its final devotional chapel hour of the summer session at noon Thursday in 346 Union.

The Minnesota Daily

World's Largest College Circulation

Official Newspaper of the University of Minnesota in Minneapolis, Minn.

Published daily during the college year except Saturdays, Sundays, holidays and days following holidays, and twice weekly during Summer Sessions by the Minnesota Daily at the Commercial Press, 418 Third St. S., FE. 6-6644.

Entered as second class matter Aug. 30, 1900, at the postoffice in Minneapolis, Minn., under act of Congress March 3, 1879.

Subscription price, \$5 a year. Single copies, 5 cents.

Editorial and Business Offices—10 Murphy Hall, University of Minnesota

Vol. 58 No. 17
 EDITOR JOHN TOMSICH
 BUSINESS MGR. H. RADEMACHER
 Associate Editor: Pauline Bierke
 Managing Editor: Don Casey
 City Editor: Bev Kroona
 News Editor: Bev Beckman
 Copy Editor: Pat Jaster
 Sports Editor: Will Shapiro
 Ivory Tower Editor: Lavonne Heller
 Photo Editor: Don Gangloff

Night Editor: Bev Beckman
 Asst. Night Editor: Carol Watson

Prof Elected to Post In Education Group

Maynard C. Reynolds, professor of educational and psycho-educational clinic director, has been elected to the governing board of the International Council for Exceptional Children. He also was named editor of the council's special publications.

The council is the major organization of educators which helps handicapped and exceptional children with adjustment problems.

Staffer Gets Assn. Post

Erwin C. Welke, audio-visual extension service adviser, was elected president of the Educational Film Library Association at its annual summer meeting last month in Chicago.

BLOOD NEEDED!

Blood, Group O Rh: Negative needed for open heart surgery of Dale Dohal from Cleveland, Ohio, in University Hospitals. Call days—Monday thru Friday, FE. 9-7311, Extension 2704.

Campbell Fine Arts
 1-1-3600
 404 W. WASHINGTON ST.
 Gay and a Little Bit Naughty!
 HIS NEW SMASH COMEDY HIT
 "MAURICE CHEVALIER" My Seven Little Sins
 in his new hit

TRAPEZE
 FR. 1-2492
 13TH & 4TH ST. S.E.
 LAST THINGS TONIGHT!
 TECHNICAL COLOR
 JEFF CHANDLER
 LAMARNE DAY
 and TIM HOWEY
 CELE BRILLOW RICHARD HEDIN-BAND JENSEN
 STARTS TOMORROW!
 Burt Lancaster Tony Curtis
 Gina Lollobrigida
 "TRAPEZE"

PIZZA
 Our Specialty
 We serve delicious Italian and American foods. All orders can be prepared to take out.
VENICE Cafe
 726 1st Ave. N.
 Open 7 Nites Each Week
 'Til 2:30 A.M.

Typewriters Rented — Sold Repaired
 FE. 2-9557
"KIRK"
 617 S.E. 14th Ave.
 (3 Blocks from Campus)

BARBER SHOP
Harvard Barber Shop
 604 Wash. Ave. S.E.
 FE. 6-3236
Oscar's Barber Shop
 1302 Fourth St. S.E.
 FE. 3-9251
Mohn's Barber Shop
 1323 Fourth St. S.E.
OSCAR MOHN, Prop.
 For Better Haircutting

TYPEWRITERS Are Always The Best Buy at CRANE'S
 ★ New Ribbon
 ★ Air Cleaned
 All for \$2.50 Only
BARGAINS IN SLIGHTLY USED MACHINES
CRANE'S
 1417 4th St. S.E. FE. 1-5949

DANCE AT THE FABULOUS NEW PROM
 NORTHWEST'S LEADING ENTERTAINMENT CENTER
This Saturday, August 11th—In Person
PRIDE OF RCA VICTOR
RALPH FLANAGAN
 and his Fabulous Orchestra
 Call ML. 6-6121 for Booths! Admission \$1.47 plus tax

Minnesota Daily . . . bulletin board of the campus

WANTADS

FOR RENT
 ONE and TWO-ROOM furnished apartments. FE. 2-6941.
 15TH AVE. & 8th St. S.E. 4 room furnished apartment, private bath, 4 students, \$100 per month. WA. 2-4562.
 3 ROOM furnished apt. near U. Available Aug. 20. FR. 1-7098 after 5 p.m.
 2 ROOM apartment, sublet until Sept. 1st or 15th, \$40 month, 712 - 16th Ave. S.E. Call FR. 1-2797 or FR. 1-1284.

WANTED TO RENT
 FACILITIES suitable for professional society's evening meetings once each week during school year. Gloria, PL. 0395 after 5:30 p.m.

FOR SALE TYPEWRITERS
 150 TYPEWRITERS FOR SALE or RENT Quick Delivery—Expert Repairs "KIRK" 617 14th Ave. S.E. FE. 2-9557

PASSENGERS WANTED
 LEAVING Minnesota for Johns Hopkins, Baltimore, Md., about Sept. 23. Two riders, driver preferred, share expenses. Write: Craig Staudenbaur, Jeffers, Minn.

INSTRUCTIONS
 CARLETON'S French class for graduates starts Sept. 24. If enough enroll, a German class will start Sept. 18. Call Carleton now. FR. 1-3156.

TYPING AND MIMEOGRAPHING
 TYPING. Penrl, 1220 5th St. S.E. 9 a.m. to 9 p.m. FR. 1-9242.
 ELECTRIC Typewriter. Experienced typist. Thesis and manuscript. Reasonable rates. Call FR. 1-9270.
 TYPING—Clara, 1422 Portland Ave. FE. 5-7446 after 4 p.m.
 GUARANTEED work by experienced typist on campus. FR. 1-9102.
 EXPERT and prompt. Thesis and manuscript typing. WA. 6-0071.
 TYPING and mimeographing. Reasonable. Call Donalene. LO. 1003, 3415 Elliot Ave. S.
 TYPING. Legal, Medical and Nursing experience. Evenings. FE. 8-1798 Winona LaFave.
 TYPING—Marie, 718 8th Ave. S.E. FR. 1-1733.
 DORIS, 729 8th Ave. S.E. FR. 1-1122. Hours 9 a.m. to 9 p.m.
 TYPING (also shorthand) expert & prompt. Thesis and manuscript. Call Fern. PA. 2-7638.
 TYPING—Thesis, manuscript. On campus. Days. FE. 2-8158 Extension 6943. Evenings. FR. 1-2658.
 EXPERIENCED typist, pick-up and delivery on campus. Reasonable rates. FR. 1-2653.
 EXPERIENCED typist. Grad student in English. FE. 9-2642 after 3 p.m.

WANTED
 ONE or two women between ages 25 and 30 to share apt. with one other. Convenient to both campuses. Call ML. 6-1072 or ML. 6-6683.

HELP WANTED
 WAITRESS from 3 to 8. Sundays off. Comet Cafe. 1822 Como Ave. S.E. FE. 8-9238.
 SUMMER WORK. Part or full time—your free hours. WE. 9-8575 or JU. 1429.
 SALESMAN WANTED. Six calls net you \$120. Call ML. 6-2791 for appointment.

TEACHERS WANTED
 WE CAN place you quickly, anywhere, Minn., N.W. and Coastal States. Free enrollment. Minnesota Teachers Service, 800 Plymouth Bldg., FE. 3-1630.

RIDES WANTED
 LEAVING Aug. 17, share driving expenses and help drive to Seattle. MI. 8-8463 or MI. 9-2976.

FOR SALE
 3-BEDROOM family home on Arthur Ave. Prospect Park. Attractively decorated throughout. Large closets. Gas h.w. heat. Insulated. Screened porch. Garage. Fenced yard. Call for appointment. FR. 1-6886.
 MICROSCOPES—Repair, rentals, sales. New and used, all accessories. Bower and Haack, 414 14th Ave. S.E. FR. 1-5791.

We're overstocked and Out They Go!

OVER 60 SUMMER SUITS

at 1/2 Price

Sale!
Year Round
SUITS
3988

Reg. 60.00 Value
Tweeds and
Imported Flannels

Reg. 39⁹⁵ 1/2 Price → **19⁹⁵**

Reg. 49⁹⁵ 1/2 Price → **24⁹⁵**

Reg. 59⁹⁵ 1/2 Price → **29⁹⁵**

Get yours today! These will not last long at these terrific sale prices!

Sale!
Group
SPORT COATS
1/2 price

Sale!
Group
SHOES
20% off

Sale!
SPORT SHIRTS
299

Sale!
SOX
49c

No Returns
All Sales Cash

The College Shop
FOR MEN

One Block East of the Union at
500 Washington Ave.

Slight Charge
For Alteration

1/2 PRICE TABLE

ODDS & ENDS
Jewelry, Shoes, Ties, Shirts
Slacks, Jackets, Belts

Sale!
SLACKS
1/4 - 1/3 - 1/2 OFF



Frank Whiting, director of University Theater, plays Bottom.
Bottom is the object of Queen Titania's affection.

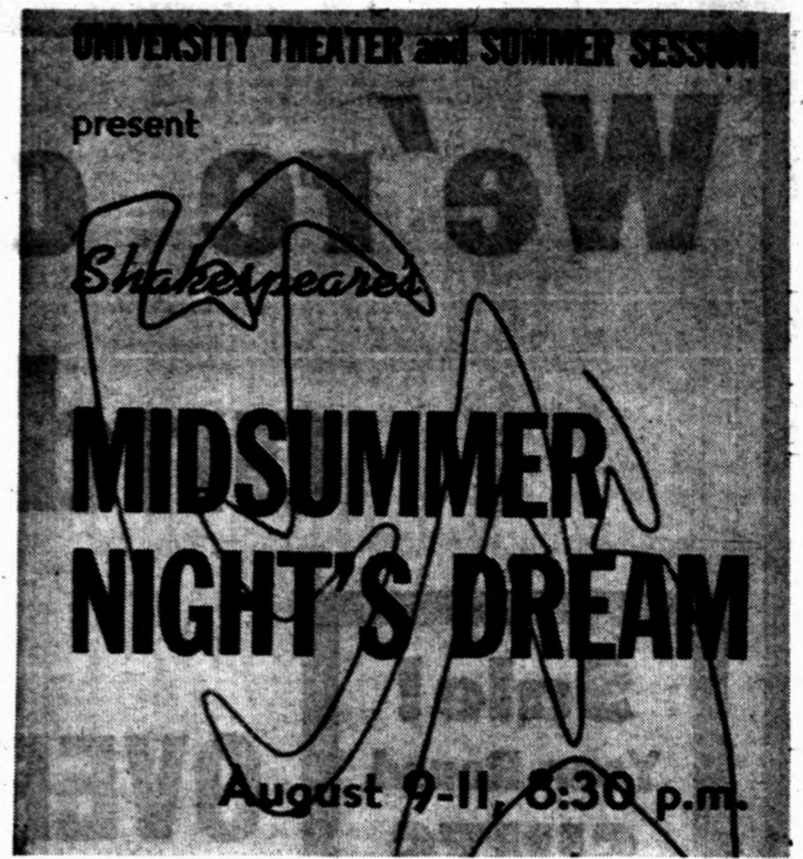
An almost fantastic amount of fantasy characterizes the University Theater's production of "A Midsummer Night's Dream" by William Shakespeare, the theater's last play of the summer.

The play revolves around the romantic confusion caused by the careless dispensing of a love potion by a mischievous sprite, Puck. The love potion causes the victim to fall asleep and to fall in love with the first person he sees upon waking.

Problems arise when the various victims of Puck's prank haphazardly fall in love with someone other than their real sweet-hearts.

The play will be given at 8:30 p.m. Thursday, Friday and Saturday in Scott Hall auditorium.

Tickets are \$1.20 and may be purchased from 9 a.m. to 5 p.m. today through Friday at Scott Hall lobby box office. They also may be obtained at the Downtown Ticket office in Minneapolis and Field Schlick in St. Paul.



Elizabeth Earl (left), SLA sophomore, accompanies David Daheim (right) SLA junior.
Hermia, loved by Demetrius, is attracted to Lysander.



John P. Blue (right), General College instructor, gallantly greets a lady.
The captivated Duke of Theseus falls in love with Hippolyta.



Jean Eastman (right), SLA sophomore, idolizes Gerald Ness (left), Education senior.
Helena is infatuated with Demetrius, who is vaguely interested.



Janis Benson, Graduate student, portrays woodland royalty.
Queen Titania delicately rules the Fairy Host.

U
La
Fore
noun
south
Minn
the s
The
prim
and t
ta co
Th
south
dian
Twin
A
every
hard
with
bird
Co
paid
to th
Max
Nevs
fores
Co
the
brool
to th
Con
const
heati
Plum
\$21.8
Robb
780.
Th
Mag
neap
work
Univ
Wins
archi
Pl
ture
with
space
A
perso
a cla
as s
Ther
of th
at th
will
area,
will
north
Th
lead
Each
scop
ment
lecte
area.
A
set s
room
draw
logic
the s
Ge
for
cinde
tile
and
Us
ited
tists
and i
indiv
acco