

THE MINNESOTA DAILY

Wednesday, October 12, 1988

Volume 90, Number 16

Minneapolis

Regent revives hopes of saving Memorial Stadium

By Lisa Remwolt
Staff Reporter

Memorial Stadium was given a last-minute stay of execution by Board of Regents Chairman David Lebedoff late Monday night.

In the wake of student and alumni protests, construction of a \$20.7 million Olympic-size pool on the Memorial Stadium site was halted until the board reconsiders its March decision to demolish the 64-year-old structure.

Lebedoff said the issue will be discussed later this week at the regents' meeting in Duluth.

But a decision to begin demolition would be irrelevant if the Memorial Stadium Committee is granted a request for a temporary restraining order in Hennepin County District Court.

Stadium pool construction delayed

By Lisa Remwolt
Staff Reporter

School spirit was alive and well Tuesday morning at Memorial Stadium, despite the 35-degree weather and the early hour. About 150 people — including students, alumni and band members — marched inside the

stadium and sang "The Rouser" at 6:30 a.m. to protest the planned construction of a \$20.7 million Olympic-size pool on the stadium site.

Shechy Construction Co. of St. Paul had planned to set up equipment at the site early Tuesday. But Board of Regents Chairman David Lebedoff said he called Associate Vice President for Physical Planning Clin-

ton Hewitt late Monday night and asked him to delay the project until after Thursday's regents meeting in Duluth.

Although University officials have said the issue has been decided, many who favor use of Memorial Stadium for Gopher football insist it isn't too late for the Board of Regents to reverse

See Stadium page 16

A judge will likely decide today whether to grant the restraining order, which is expected to be filed in court this morning.

"We will do whatever is necessary to stop this travesty," said Bill Semans, head of the commit-

tee that for five years has fought to bring football back on campus.

Lebedoff said student opinion influenced his decision to call Clinton Hewitt, associate vice president for physical planning, and ask him to halt construction.

Lebedoff said he also would like to see football return to campus.

But Lebedoff said philosophical considerations also were a motivating factor.

"What is particularly attractive to me is, in wake of all of the

controversy about athletics at the University, I think of a better symbol of student-oriented athletics use of Memorial Stadium that (renovating the stadium) be fiscally and physically possible. I want to take a fresh look at it, but I don't want to raise hopes."

Lebedoff said he would not support refurbishing the stadium if costs were prohibitive, and that he would not recommend approaching the state Legislature for funds. However, he said it might be possible to launch a public campaign to refurbish the stadium.

University Physical Planning is in the process of preparing reports on the demolition costs and the costs of moving the pool to a

See Regents page 17

Perpich focuses on reducing dropouts

By R. George Smith
Staff Reporter

Gov. Rudy Perpich said Tuesday that open enrollment, a new mentor program and more input from the nation's business community will be his chief educational priorities next year.

Perpich unveiled his plan, aimed at stemming the high school dropout rate, at Hamline University in St. Paul. He criticized the two U.S. presidential candidates for not emphasizing education enough.

"One-third of our 40 million students face the risk of dropping out of school," said Perpich, who is also chairman of the Education Commission of the States. "If you don't invest in education, you're going to pay the price later."

The non-profit commission is composed of governors, legislators, education officials and parent-student organizations representing all 50 states. The organization conducts research and publishes its findings.

Perpich said he is trying to start a partnership with the national business community to give business interests more say in education policy-making decisions.

In Minnesota, the business community, policy-makers and educators already are working together on policy-making issues, business and government officials said.

Under the mentor plan, currently in its planning stage, college students would tutor at-risk students in secondary schools. The plan, which assumes that struggling students respond better to individualized help, would later broaden to include peer advising, he said.

Perpich contends the program, to be called Partners in Learning, would help attract more college students to teaching.

See Perpich page 5

Waterway



Photo/Paul Sponholz

A passing bicyclist contemplated the possibilities of a quick wash when workers tested the fire pumps at the new Electrical Engineering and Computer Science Building.

U audit reports history department fraud

By J.C. Kish
Staff Reporter

The University history department made fraudulent overtime payments totaling \$4,450 to eight clerical workers during the last four years, according to the University Department of Audits.

The payments, documented in a report released by the University auditor in July, were authorized beginning in 1985 by then-department chairman Russell Menard and administered by administrative secretary Suzanne Cave Haskins.

"I certainly admit that I made a mistake in overseeing the budget," said Menard, a history professor whose term as chairman ended in June. "I made a mistake in not knowing about some rule I should have known about."

University Police officials conducted their own investigation based on the report and submitted their findings to the Hennepin County Attorney's office, which decided not to prosecute, said University Police Capt. William House.

The fraudulent payments were distributed as "bonuses" to history

department workers, the audit report said. An additional \$669 was dispersed through what the audit called "questionable payments." The payments came from extra money remaining at the end of the year from a salary fund.

Most overtime payments were made at the end of the year, when history department officials were sure money was available, the report said.

Arrangements are being made to repay the misappropriated money, according to a statement by James Tracy, professor and chairman of the history department. Four of the eight recipients of the funds — Haskins, Margaret Beegle, Shashi Chopra and Barbara Kesser — currently are employed by the department as clerical workers.

Haskins refused to comment. An emotional Menard said Tuesday he believed the payments were proper and suggested that department heads should receive more management guidance from the University administration.

"I didn't know it was improper until I talked to the auditor," he said. "We are given no support from the college or the University in how to run the department. It's not surprising that mistakes happen."

See History page 3

MINNESOTA HISTORICAL SOCIETY

CC 8/84

MN HISTORICAL SOCIETY
NEWSPAPER DEPARTMENT
690 CEDAR STREET
ST. PAUL, MN 55101-0000

daily
7
88
es
ps
1100
1300
1360
1400
1350
1200
1300
er For
itres
it the
info

International

Militant reverend calls Pope 'anti-Christ'

Strasbourg, France — The Rev. Ian Paisley, a militant Protestant leader from Northern Ireland, disrupted Pope John Paul II's unity speech to the European Parliament on Tuesday by shouting: "I renounce you as the anti-Christ!"

The pontiff had just begun delivering the key speech of his four-day trip to northeastern France, a talk in which he urged Europe to adopt a common political structure. The European Parliament is an advisory body to the 12-member European Economic Community.

Paisley stood by his desk in the back of the assembly chamber during welcoming remarks by Lord Plumb, president of the Parliament. As the pope began speaking, he was immediately interrupted by Paisley, standing about 11 rows from the pontiff.

"I renounce you! I renounce you as the anti-Christ," shouted Paisley, leader of the Irish Protestant Democratic Unionist Party, who was instantly surrounded by about a dozen deputies to the Parliament. They shouted to drown out his insults, threw paper at him and tore from his hands a crude orange banner reading: "Pope John Paul II, anti-Christ."

Plumb twice called for order and then evicted Paisley to the applause of deputies and an estimated 300 spectators in the gallery.

A group of deputies dragged and shoved Paisley from the hall. He later told journalists, "I was hammered. I was beaten about the ears and body."

John Paul smiled briefly at the outburst and resumed his speech that was again interrupted, this time by a round of applause.

Wife wants Pinochet to run

Chile — The wife of President Augusto Pinochet apparently wants her husband to stay in office, but his chief of staff said Monday it's too early to discuss whether the general will run in the open presidential election next year.

Pinochet has said nothing on the issue, but the widely read conservative daily *El Mercurio* on Monday quoted Pinochet's wife, Lucia, as urging supporters to "form a grand support movement so that the president will change the constitution and can be re-elected."

When asked whether the 72-year-old general might run in the election, planned for December 1989, Orlando Poblete told reporters the question was "premature."

Poblete is secretary-general of the military government, a Cabinet-level post similar to chief of staff. He spoke after the 15-member Cabinet met with Pinochet, who lost a plebiscite last week on extending his presidency to 1997.

Pinochet "ratified his confidence in our carrying out the functions of our various portfolios" and discussed the economic, social and political future, Poblete said. All Cabinet members offered their resignations after the plebiscite defeat, but Pinochet rejected them.

Lawyers disagree on whether Pinochet's 1980 constitution allows him to be a candidate in open elections.

Most, including several supporters, say he cannot because of the stipulation that presidents cannot succeed themselves. The general seized power in September 1973, ousting the elected government of President Salvador Allende, an avowed Marxist who died in the coup.

Defense Minister Patricio Carvajal, a retired admiral, said lawyers told him Pinochet could run "if he stepped down a little before" the election, in which case there would be an interim president and Pinochet technically would not be succeeding himself.

Carvajal told reporters he thought changing the constitution "could be more complicated" than stepping down before the vote.

National

Petition urges ban on fetal tissue research

Washington — Nearly 500 physicians and others, in a letter sent to President Reagan on Monday, called for an executive order banning the use of intentionally aborted fetal tissue for research.

The plea came 10 days before a National Institutes of Health special advisory committee meets to finalize its recommendations on the controversial subject.

Although its actions at a three-day meeting last month were informal, the discussions and a series of "straw" votes left no doubt — even among opponents — that a majority of the 21-member

panel will formally recommend going ahead with such research.

However, the advisory committee will not officially forward its recommendations to a standing NIH ethics committee until Nov. 15 — a week after the presidential election — and it is unlikely any recommendations will make their way up through the federal health bureaucracy until after a new president takes office.

At least some officials in the White House are pushing for an early order from Reagan, regardless of what the NIH panel recommends.

Regional

NRA loses challenge to Minnesota law

Washington — The National Rifle Association, for the second time in two years, lost a Supreme Court challenge Tuesday to a Minnesota law that required it to disclose the names of more than 20,000 NRA members.

The Court, without comment, refused to hear arguments that the Minnesota controversy never should have landed in federal court.

The justices in 1986 let stand, again without comment, rulings that the Minnesota Ethics in Government Act does not violate the free-speech or associational rights of NRA members.

The law requires lobbying groups to register with the state, and disclose the names, addresses and places of employment of all those who contributed more than \$50.

The Minnesota Ethical Practices Board, which enforces the law, said the NRA is a lobbying group because, in part, it spent thousands of dollars on mailings attacking former State Attorney General Warren Spannaus in his 1982 gubernatorial campaign.

U.S. District Judge Miles Lord upheld the law in a May 2, 1984, ruling. Subsequent NRA appeals to the 8th U.S. Circuit Court of Appeals and the Supreme Court failed.

The association in late 1984 complied with the law — supplying the board with the names, addresses and places of employment of more than 20,000 Minnesota members to whom letters had been sent in connection with the 1982 elections.

Records show that \$23,256 was spent in connection with the mailings.

In its 1986 appeal, the NRA contended that no group should be held accountable to government regulation because it communicates with its members concerning candidates for state office.

— compiled from The Associated Press



Elmo sold his soul

Elma wept in the 48-degree wind as the Prince of Darkness appeared to seize his prize. All she had left were the memories of tailgating and beer swilling. Elmo had sold his soul in 1983, hoping to cash in on non-skid Astroturf and inflatable ceilings. You can't break deals with the devil...

THE MINNESOTA DAILY

The Minnesota Daily (USPS 351-480) is an independent, student-written and student-managed newspaper for the Twin Cities campus of the University of Minnesota. Opinions expressed here are not necessarily those of the student body, faculty, or the University administration.

Published daily Mon-Fri during the regular school year and three times weekly during the summer by the Board of Student Publications.

Complaints concerning Daily coverage, after first being brought to the publication editors, may be referred to the Board of Student Publications, c/o Tomia Cornelius, 235 Coffman Memorial Union, University of Minnesota, Minneapolis, MN 55455.

Daily Editorial Office: 10 Murphy Hall, 206 Church St. SE, Minneapolis, MN 55455. Phone: (612) 625-6666.

Business Office: 720 Washington Ave. SE, Minneapolis, MN 55414. Business Phone: (612) 627-4081.

Classified advertising: 627-4140. Classified display advertising office: Room 208, 627-4079.

Display advertising office: Room 349, (612) 627-4080.

Subscription rates (in advance): \$14 per quarter (50 issues), \$45 per year (180 issues), \$12 for the summer. Second class postage paid at Minneapolis, MN, and at Shakopee, MN.

© 1988 The Minnesota Daily

Editor in Chief: Stephen Lorinser
Managing Editor: J. Trout Lowen
Assistant Managing Editor: Dan Eggen
News Editors: Blake Morrison
Editorial Page Editor: Jon Gordon
Opinions Page Editor: Jeff Cook
Readers' Representative: Randel Shard
University Administration Editor: Leslie Cole

Community Editor: Kurt Erickson
Student Lifestyle/Issues Editor: Rose Farley
Sports Editor: Tim Kelly

Photo Editor: Todd Cornelius
Assistant Photo Editor: Geoff Hansen
Art Director: John Haselmann

Assistant Art Director: Constance Long
Day Desk Editor: Jeff Henneman
Chief Copy Editor: Audrie Krause

Chief Night Editor: M. S. Masters
A&E Co-Editors: Jeff Cook
Jim Meyer

Words Worth Co-Editors: Jim Walsh
Judith Lewis
Margaret O'Donnell

Complement Co-Editors: Michael Hopp
Mary Ann Welch

Worldviews Editor: Thorunn Barnadottir

Business Manager: Paul Burke
Controller: Christopher G. Edwards

Asst. Controller: Russell S. Chadinha
Accounting Manager: Debbi Williams

Credit Manager: Randall D. Sellnow
EDP Manager: David Freeman

Hardware Manager: Brian McEllan
Software Manager: Maurizio Torres

Applications Manager: Scott Hanson
Production Manager: John Slothower

Advertising Production Manager: Lisa Austin

Advertising Creative Director: Leisa Knych-Johnson
Asst. Adv. Creative Dir.: Doug Adkins

Editorial Production Manager: Steven M. Spencer
Production Services Manager: Paul Dols

Retail Display Advertising Manager: Beth Fuller
Chris Thompson

Asst. Retail Display Adv. Managers: Jason Berg
Beth Fuller

Classified Sales Manager: Tom Piechura
Susan E. Johnson

Assistant Classified Sales Manager: Loan Vo

Classified Operations Manager: Daniel Larson

Assistant Operations Manager: David Hubbard

Human Resources Manager: Jeff Johnson
Circulation Manager: Andy Ernst

Advertising Supplements Editor: Tim Chisser

The Official Daily Bulletin appears on page 16.



VOLUNTEERING PAYS OFF!

COFFMAN UNION PROGRAM COUNCIL
KNOWLEDGE - FRIENDSHIP - EXPERIENCE

CUPC does hundreds of programs for the University community each year. Here's a chance to be creative, do programming and have fun in the process.

We have dozens of positions open in our cultural, educational, multicultural, international and social/recreational program areas. Special opportunities are available in our PR/Publicity Agency and in personnel.

C'mon! Do something exciting and valuable.

Call Krista McCallum or Bernie Molitor at 625-4455 or stop by 220 Coffman.

Special Open House - Thurs. Oct. 27th
10:00 - 3:00pm 230 CMU.

Free Food - Good Talk
Coffman Union Program Council

COMPLETE WINE LIST - ONION RINGS - B-B-Q RIBS - COMPLETE WINE LIST - ONION RINGS - B-B-Q RIBS - COMPLET

Manning's Cafe

(Now serving strong beer)

FAMOUS FOR DRAFT BEER
FRIED CHICKEN
HAMBURGERS
AND OUR HOMEMADE ONION RINGS

A COLLEGE TRADITION
FOR OVER 55 YEARS

2200 Como Ave. S.E.,
Mpls. 331-1053



Open 7am - 1am Mon - Fri
7am - 1am Saturday
10am - 1am Sunday



MEXICAN PATTI MELT - MEXICAN PATTI MELT - MEXICAN PATTI MELT - MEXICAN PATTI MELT - MEXICA

Fast turnover caused by low pay, Minneapolis cops say

By Julie Inglebret
Staff Reporter

Sipping steamy fast-food coffee, three Minneapolis police officers met Tuesday outside a northwest Minneapolis Burger King to metaphorically show how their low salaries force many officers to take part-time jobs.

Officer Christopher Hildreth said the police force's low pay compares to trends in fast food restaurants.

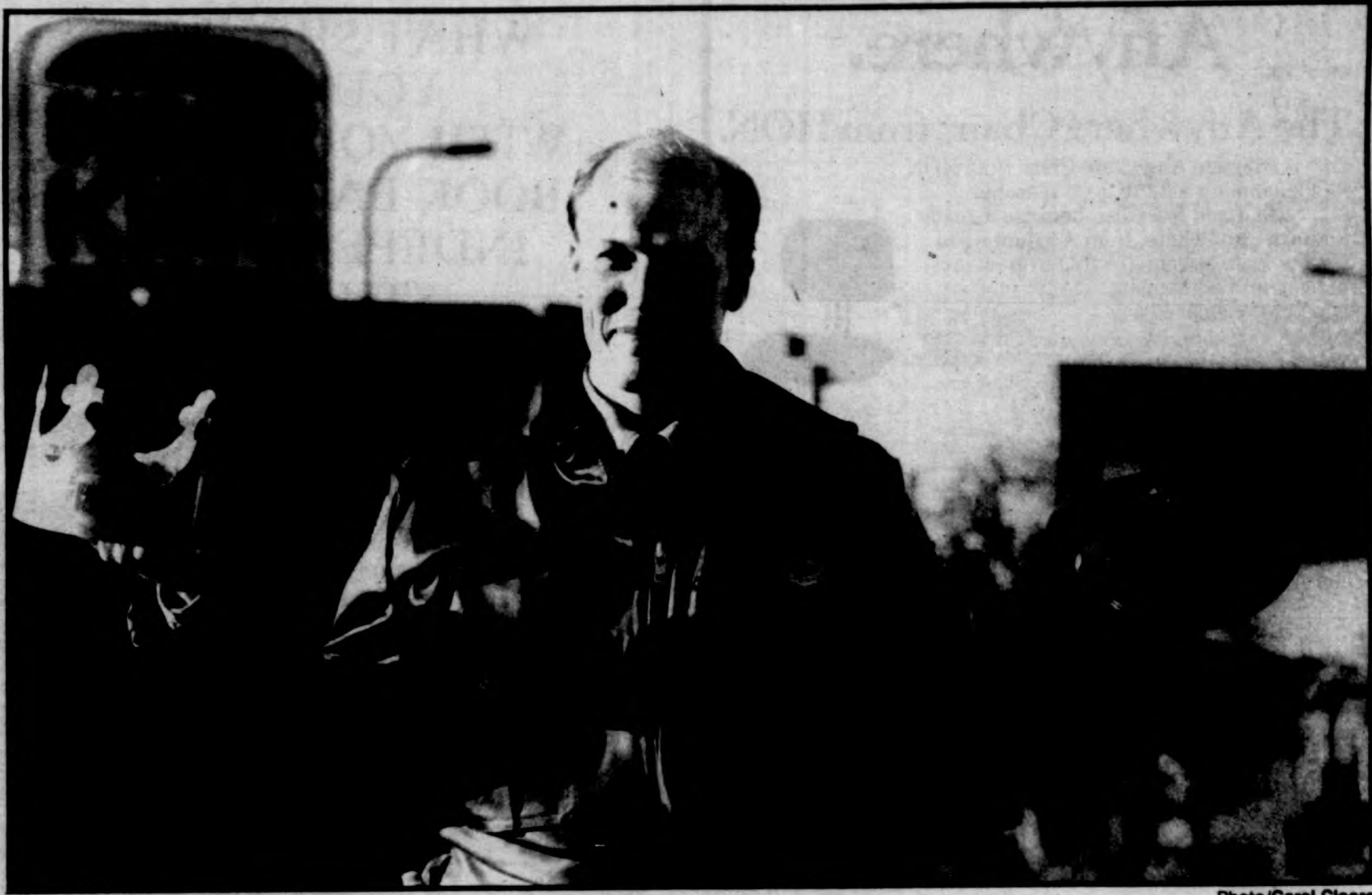
"Nobody wants to work there; it's essentially the same," said Hildreth, a first-year Minneapolis officer.

The officers, representatives of the Minneapolis Police Federation, said low salaries are causing a high turnover rate on the force and keeping away qualified recruits, especially minorities and women.

Not including benefits, starting salary for a Minneapolis officer is about \$20,000. In St. Paul, officers start out at \$27,000 a year.

The pay discrepancy has led to a 51 percent retention rate of new recruits in Minneapolis, said Lance Zentzis, president of the Police Officers Federation, the officers' union.

"We have a real problem maintaining and recruiting people," Zentzis said. "If they can get paid more, they will go somewhere



Photo/Carol Cleere

Officer Christopher Hildreth of the Minneapolis Police Federation says low salaries have forced many officers to wear more than one hat. The predicament in Minneapolis has caused a high turnover rate and kept away qualified recruits, according to the federation.

See Police page 5

U audits note unauthorized use of funds by departments

Women's athletics, Spanish-Portuguese departments cited

By Shanthy Nambiar
Staff Reporter

Two University departments have been involved in the unauthorized use of University funds, according to the University Department of Audits.

The Department of Spanish and Portuguese and the Department of Women's Intercollegiate Athletics were two of seven departments cited in auditors' reports issued this summer. No evidence of fraudulent activity was found in either case, according to the audit office.

An August report said the Spanish and Portuguese department opened several bank accounts without appropriate University approval and it supported a nonprofit printing company using University resources.

A second auditor's report, completed in July, recommended that the Women's Intercollegiate Athletics staff stop charging personal long-distance phone calls to University telephones. During the 1986-87 period, some \$640 worth of personal calls were made. The University was later reimbursed for the calls, the report says.

Officials in the Department of Spanish and Portuguese are studying ways to implement suggestions found in the audit report, said Antonio Ramos, professor and chairman of the department. He declined to comment further on the audit findings.

The Women's Intercollegiate Athletics department has implemented the auditor's recommendations, said Donna Olson,

associate women's athletics director. "Now, when long-distance calls have to be made, personnel have to use a pay phone or a personal phone card."

Problems for the Spanish and Portuguese department started with the opening of the bank accounts, said Patrick Spellacy, University director of audits.

All of the accounts were used for publishing materials related to the department, according to the audit report. One of the accounts, the Prisma Institute, funded printing and publications services for department-related literature that cost the University approximately \$30,000.

The report recommended that the Spanish and Portuguese department close three bank accounts — the Prisma Institute account, the Hispanic Issues account and the Institute for the Study of Ideologies and Literature account.

The report also recommended that the department:

- deposit the money currently in these unauthorized accounts into the University's accounting system;

- follow University printing guidelines; and
- increase the separation of duties between the department's finances and inventories.

"The big thing is to bring the activity back on the University accounting system," added Spellacy.

Although the procedures for purchasing are clear, "on the whole, the University could do a much better job by providing clear, consistent and up-to-date policy and procedure manuals," said Carol Campbell, acting vice president for finance and operations.

University officials will meet representatives of the Spanish and Portuguese department to discuss procedures that comply with University policies, a finance and operations official said.

History from 1

However, a University finance department official disagreed.

"I think that University payroll policies have always been quite clear," said Carol Campbell, acting vice president for finance and operations.

In his statement, Tracy said "there was no intention of defrauding the University," and that "the payments were made because of a mistaken understanding of what University policy permits."

Beginning in fiscal year 1988, merit payments in addition to regular salary were allowed by the University. The College of Liberal Arts, to which the history department belongs, did not adopt this policy.

"Overtime had been paid to the individuals, but not as a result of actual overtime worked," the report found. Time cards supporting those payments were fabricated only after the auditor requested them.

The practice of paying the overtime at the end of the year began in 1985 when the salary fund had extra money due to the

termination of an employee.

Patrick Spellacy, director of audits, called the practice "highly unusual."

CLA's acting dean, Craig Swan, said the overtime payments were not according to University policy.

"I think Menard made a serious mistake. An unfortunate misunderstanding of U policy. But one must put this into perspective. This is not a Luther Darville situation."

Darville, a former acting director of the Office of Minority and Special Student Affairs, was indicted by a grand jury on two counts of theft by swindle in relation to the disappearance of approximately \$198,000 of University funds.

Swan added that the policy of making lump-sum payments for overtime at the end of the year rather than when the overtime occurs has "never really been the U's policy."

He said the history department is now making overtime payments as overtime occurs.

Know

U FILM SOCIETY 627-4430

Bell Aud. 17th & University

COMMISSAR Nightly 7 & 9 pm
(5 pm Sat., Sun. also)

Newly released after 20 yrs suppression - A pregnant Soviet Commissar's intimate decisions cross barriers of prejudice and politics.

"DAZZLING...sheer lyricism and passion." —L.A. Times

SPECIAL SHOWING 7:30 ONLY THURS. OCT. 13.

A reception & discussion, sponsored by the B'nai B'rith Hillel Foundation and the Minnesota/Dakotas Action Committee for Soviet Jewry, will follow film. Speakers are:

Nick Hayes, Assoc. Prof. of History - Hamline Univ. & Political Consultant and Commentator on the Soviet Union for KTCA-TV.

Patrick Dale, Asst. Prof. - St. Olaf College, Coord. Soviet Studies, Oberlin College

Robert Aronson, Immigration Atty. - Jerome Ingber & Assoc., Fulbright Scholar, Moscow Univ. 1978-79, Dir. - Control Data Corp. in Moscow, 1981-84.

At Nicholson Hall Aud. (1 blk SW of Bell) Nightly 7:30 & 9:30 (5:30 Sat., Sun. also) 3:30 bargain matinee Sunday.

"WONDERFUL" ...get over there this minute and watch it." - City Pages

Vincent

Fiesta!

Residence Hall Students
CMU Rec Center invites you to an old-fashioned Latin American Fiesta!

Thursday, October 13
7:00 - 10:30pm

Come to Coffman Underground

- Free use of the Rec Center
- Free Tacos
- Free Bowling Instruction
- A chance to win great prizes

Sign up for Fall Bowling Leagues! Only \$5.00 team entry fee (\$2.75 per person per night). Champions will win T-shirts!!

CMU REC CENTER

Seating that works. Anywhere.

The Anywhere Chair™ from HON.

The new Anywhere Chair from HON got its name for a lot of good reasons.

First and foremost, because it really does work anywhere, from Accounting to X-Ray—even at home! A fingertip pneumatic height adjustment helps fit the chair to any worker.

And the sleek, modern styling looks good... anywhere!

What's more, The Anywhere Chair is American-made. Built to last. And our low price makes it the best value *anywhere*.

So come see the chair you'll want to use everywhere. The Anywhere Chair, from HON.



Model 5820

\$97.95

Burgundy, brown, black, cinnamon

NELSON'S
Office supply
SOUTHDALE • RIDGEDALE • ROSEDALE • NORTHTOWN
BURNSVILLE CENTER • MIDWAY • U OF M
In Dinkytown next to McDonalds

WHAT SHOULD YOU DO WITH YOUR *FREE* BOOK BAG FROM INDEPENDENT STUDY?

Put your *free* bulletin from Independent Study in it. Bring in this ad and pick up both at 45 Westbrook Hall on the east bank of the Minneapolis campus. Then find out about over 380 correspondence credit courses you can take on your schedule in your own place.

INDEPENDENT STUDY UNIVERSITY OF MINNESOTA

Continuing Education and Extension: Opening Doors for 75 Years.
An equal opportunity educator and employer.

CBS drops offensive references

Minneapolis (AP) — After a group of American Indians complained that a Thanksgiving-related "Peanuts" cartoon is offensive, CBS-TV has dropped references in the program to native Indians as "savages," a CBS executive said Tuesday.

Carol Altieri, vice president of program practices for the CBS Broadcast Group in Hollywood, said the producer's notes on the script to "The Mayflower Voyagers" indicate that the word "savages" has been dropped throughout.

The "Peanuts" special is scheduled to air Oct. 21 as part of an animated historical mini-series called "This Is America, Charlie Brown."

Altieri said the change was made because of concerns raised by the Concerned American Indian Parents group of Minneapolis and the CBS affiliate in Minneapolis, WCCO-TV. She said no other affiliates had complained.

Among other things, WCCO consultant Tom Cousins said the cartoon wrongly portrays Indians as giving "war whoops" and unfairly portrays the Indian Squanto, who befriended the Pilgrims, as a "grateful slave."

FRIGHT STUFF
MASKS • COSTUMES • ACCESSORIES

EXCLUSIVELY AT **spencer**
AMERICA'S HALLOWEEN HEADQUARTERS

Southdale Center
(612) 922-5966
VISA • MASTERCARD • DISCOVER

378-9561
☆☆☆☆
FOUR STAR AUTO SERVICE AND TIRE CENTER

3324 University Avenue SE
Mpls., MN 55414

COOLING SYSTEM FLUSH AND FILL
\$21.95
plus anti-freeze

LUBE, OIL CHANGE AND OIL FILTER
\$12.95
with tune-up.
reg. \$17.90
Includes: Top off fluids in trans., diff. mast. cyl., power steering, battery & washer.

MOST CARS, to 5 Qts. oil.

Front Disc Brake Reline
\$59.90
Rear Brake Reline
\$49.90
Most cars, metallic pads extra.

Call for super tire specials!

TUNE UP: 4 cyl. **\$44.90**
6 cyl. **\$49.90**
8 cyl. **\$54.90**

Includes: Points, plugs cond. and up to two plug wires, electronic engine check, adjust timing, idle speed, and mixture where applicable.

CALL FOR WARRANTY DETAILS
378-9561

Open: 7am-6pm M-F
8am-4pm Sat

Task force suggests tougher sentences for rape

By Delores Lutz
Staff Reporter

Longer supervision after prison also recommended

Rapists who can't be treated should be locked up forever, a Minnesota task force on sexual violence recommended Tuesday.

The state also should change sentencing guidelines so either violent or repeat sex offenders could get the 20-year maximum sentence, according to a preliminary report by the Attorney General's Task Force on the Prevention of Sexual Violence Against Women.

And along with tougher punishment, the state also should require long-term supervision and

early treatment of sex offenders, especially adolescents, stated the report released Tuesday at a Capitol press conference.

"Most rapists who are caught are not doing it for the first time," said task force co-chairperson Fern Sepler-King, who is also executive director of the Minnesota Crime Victim and Witness Advisory Council. "It is compulsive and repetitive behavior, and without intervention, it is likely to occur again and again."

The current system allows for a maximum of 15 months of supervision after release from a 28-month prison sentence for forcible

rape. The task force recommends that supervision for those offenders be extended to 20 years.

"The short time we have (now) to work with a person does not allow for successful treatment," said Hennepin County Attorney Tom Johnson, task force co-chairperson.

But some dangerous offenders will refuse treatment or remain unresponsive to it, and they should be handled under civil commitment procedures, Johnson said.

The 20-member task force was appointed June 26 to find solutions to the problem of sexual

violence after a two-year series of sexual assaults in the Twin Cities left five women dead.

The man who pleaded guilty to the June 12 rape and murder of Mary Foley in a Honeywell parking ramp confessed that he had sexually assaulted eight women in the month after he was released from prison in May.

A mid-summer Minnesota Poll found that two-thirds of the women in the metropolitan area had restricted their activities or armed themselves, and half had changed where they park.

"If we allow rape to remain unchecked and let offenders prey

on our citizens, women will continue to be condemned to violence in their homes and fear in their own neighborhoods and work places," said Attorney General Hubert H. Humphrey III.

The task force's preliminary recommendations include:

- Increasing guideline sentences for sex offenses involving force.
- While the offender is in prison, providing treatment aimed at changing his behavior when he is released.
- Providing extended prison sentences for offenders who fail to make progress during treatment.
- Improving evidence collection

See Violence page 17



Photo/Clara Wu

Self-defense instructor Mary Brandl was one of those who helped University staff members look for solutions to sexual assault on campus, in a Tuesday workshop at the St. Paul campus.

Self-defense methods, rape myths discussed at awareness workshop

By Stephanie Armour
Staff Reporter

A young girl, wearing a mini skirt and plenty of makeup, is walking carefree down a dark, deserted alley.

But hiding in the shadows, stalking her, is a man in an overcoat.

Suddenly, the man leaps in front of her. He presses a knife to her throat and rapes her.

Although this situation does occur, it's not nearly as common as some think, said Irene Greene, director of the University's Sexual Violence Program.

In fact, 90 percent of all sexual assaults occur between people who know each other, she said Tuesday at a Personal Safety

Awareness Workshop, held to increase women's awareness of potential assault situations. The workshop was held in Coffey Hall on the St. Paul campus.

Sexual assault "can happen with dating partners, in parking ramps and even in the office," said Greene.

During the workshop, about 40 staff members of the University Student Support Services discussed three major issues: the myths surrounding rape, high-risk rape zones on campus and self-defense tactics.

Workshop participants later split into groups to discuss unsafe areas on campus.

Most support services staff members said the University needed to make improvements —

See Defense page 9

Daily Briefs

Miera urges support for grape boycott

Suspended Ramsey County Judge Alberto Miera urged University students to boycott table grapes at a lecture Tuesday sponsored by the Law Forum.

"Do we care in our hearts to suffer with farm workers and their children?" Miera asked in urging support for the grape boycott sponsored by the United Farm Workers union. The union has called for a boycott of table grapes to protest the use of farm pesticides that union officials blame for health problems among migrant farm workers and their families.

"Together, we can do anything," Miera said.

About 50 people attended Miera's lecture, and in urging them to stop eating grapes Miera told them that, by standing by apathetically, they were contributing to the problem.

"Are we willing to get involved in a little way even though it takes some effort?" Miera asked. He added that if the health of farm workers is left in the hands of growers, the lives of migrant farm workers will never change.

The current grape boycott began in 1984, organized primarily by farmers' union president Cesar Chavez, who fasted for 36 days last summer to draw attention to the boycott.

Miera, who was suspended for a year in connection with charges of harassment of a court employee, is spending the year trying to raise awareness of the grape boycott.

— Brenda van Dyck

Front pages taken from newspaper display

Two front pages from the Minnesota Daily were discovered missing Monday from the historical exhibit on display at the St. Paul Student Center.

The 30-issue exhibit has been on display on the second floor of the St. Paul Student Center.

Gary Muellerleile of the St. Paul Student Center speculated that the two items may have been taken by someone who found them offensive.

One of the missing pages featured the "Christ Speaks" joke issue that depicted people lying dead in front of Northrop Auditorium. The other contained a photograph of a protest in which a female student was holding a sign which contained an expletive, according to Stephen Lorinser, editor in chief of The Daily.

Muellerleile said there had been no complaints about either of the pages.

The exhibit will be on display at the St. Paul Student Center until November.

Union blames two-tier wage scale

Police from 3

Minneapolis police administrators agreed that raising starting salaries would attract more officers, but said the low wages are not causing a high turnover rate.

Minneapolis Deputy Chief David Dobrotka said in a separate interview that although some Minneapolis officers have left to work for the St. Paul police department, others "have been approached by St. Paul and have refused."

The number of Minneapolis officers who move to other police departments is not available, according to Dori Kaibel, a senior accountant in the Minneapolis police department.

But Minneapolis Mayor Don

Fraser said attracting and retaining officers is not a problem.

"We're getting a lot of new and really good officers," Fraser said.

Zentzis blamed the low salaries on the city's two-tier wage scale. The city council adopted the scale in 1984.

Under the two-tier system, officers must work 10 rather than six years before reaching the top officer salary of \$35,000.

In negotiations four years ago, union leaders agreed to decrease starting salaries in exchange for raising salaries of top officers, according to Council Member Kathy O'Brien (DFL-2nd Ward).

Dobrotka said the two-tier system is unfair to officers, since St. Paul police are being paid more.

But O'Brien said the officers'

union is responsible for the current pay structure.

"The current wage structure didn't just come out of nowhere, it came from the bargaining table," O'Brien said.

Because the city and union leaders are currently negotiating contracts (which go into effect Jan. 1), O'Brien refused to say whether officers could expect a salary increase. But she said that a \$7,000 increase — the amount necessary to equalize the salary disparity — is "an awfully big jump."

In September, the Minneapolis City Council approved a plan to add 72 officers to the force over the next two years. O'Brien said the increase, combined with limited city funds, will affect any salary increase.

Perpich from 1

About 140 colleges and universities currently participate in similar mentor programs nationwide, Perpich said, adding that he hopes to involve about a million college students in the program.

Perpich said the peer-tutoring program at the Marshall School in Duluth has convinced him that the mentor program can work. As part of their service requirement, students who excel in certain areas assist those who are weak, said Joe Giesen, dean of academics at Marshall.

"One week a student may help, and the next week he or she may get help," Giesen said. "Peer tutors add another dimension (to the educational process)."

Open enrollment, currently honored by some schools on a voluntary basis, will become compulsory in 1990, allowing students to attend schools outside their districts.

The open enrollment policy, however, has drawn opposition, Perpich said. About 50 percent of Minnesota's students in grades K-12 can choose schools outside of their school districts because of voluntarily implemented open enrollment programs, said Lani Kawamura, commissioner of the State Planning Agency.

The open enrollment policy also is gaining support and recognition locally and nationally, Kawamura said.

"If I were to explain it in a picture," said Mike Huerth, assistant principal at South High School in Minneapolis, "it's like a pond that suddenly has a stream going through it. It's not that dramatic, but I can see that competition between districts being good."

Fifteen states, including New York, South Dakota and Colorado, have implemented open enrollment on a more limited

basis compared with Minnesota, state officials said.

Metro-area schools such as South High School, which has 17 National Merit Scholarship winners, should be able to use the open enrollment program to compete more actively for top students, Huerth said.

Michael West, director of the Martin Luther King Program, one of the University's most successful support programs, lauded Perpich's efforts.

"Anything that is done to help at-risk students is a step in the right direction," West said.

But West said the dropout problem cannot be solved from the governor's office alone. He said Perpich should seek ways to educate parents and develop an education consortium of students, parents, legislators and educators to study problems.

THE MINNESOTA DAILY

Founded May 1, 1900

Stephen Lorinser / Editor in Chief
Carmen Peota / Editorial Page Editor

Dan Eggen, Jon Gordon, J.C. Kish,
J. Trout Lowen, Meleah Maynard,
Blake Morrison, Susan Severeid, Randel Shard,
Robert Vernon / Editorial Board Members

Foul play

It's fourth down of the final quarter with inches to go, and the student team has called for a time-out. While the referee's back is turned, the administration scrambles, picks up the wrecking ball and heads for the goal. It is the final play in a game that was actually decided three years ago when U officials signed away on-campus football.

The crowd is stunned. The students cry, "Unfair!" And the media descend upon the University once again, asking questions about secrecy, cost overruns and lack of communication between administrators and regents.

Is this an instant replay of last year's Eastcliff spectacular? Or is this merely another play by an administration that simply refuses to learn from its mistakes and improve its game plan?

Why is the demolition scheduled immediately after a week of growing student and community support for saving Memorial Stadium? Why was a press release announcing the arrival of the wrecking crew sent out after office hours the day before the scheduled demolition when it had been scheduled for several months? Why weren't regents consulted about the projected \$540,000 cost overruns when their guidelines require notification for any overrun of \$100,000 or more? And why are students always the last to know the answers to any of these questions?

It's not the result of the game with which we take issue, today. It's the way the final play was executed — in secret by an administration that seems always to be scrambling to achieve its goals.

Good neighbors

Corporate competition in a free market provides the foundation for capitalist systems. Even in the most open markets, however, some restrictions are necessary to keep powerful corporations from taking over weaker businesses and forming monopolies. The same is true, on a larger scale, when dealing with trade between countries.

The pending U.S.-Canada Free Trade Agreement would create a North American free trade zone by Jan. 1. If ratified by the Canadian Senate, it would eliminate tariffs and dismantle investment barriers over the next 10 years. Canada's Conservative-controlled House of Commons passed the trade bill in late August, but the Senate's Liberal Party majority has so far blocked its passage. If enacted, the trade bill would harm Canadian businesses while providing a field day for U.S. corporations. President Reagan signed the bill in September.

If the two countries' economies were roughly equal, free trade across the continent would make sense. However, the size of the U.S. economy is about 10 times that of Canada, and powerful U.S. companies could easily undercut Canadian businesses, placing them at the mercy of their American counterparts.

Canada's Liberal Party is concerned, and rightly so, that Canadian sovereignty will be seriously jeopardized if the bill is enacted. With increased dependence on the United States, Canada could lose control over its economy and culture. Without tariffs to balance the wide discrepancies between the two countries' economies, Canadian businesses would have difficulty competing with American businesses.

Canadian Prime Minister Brian Mulroney recently called for a Nov. 21 election, after polls indicated that Conservatives had an 11-point lead over the Socialist New Democratic Party and a 14-point lead over the Liberals. If Mulroney's Conservatives win the election, the Senate has agreed to stop blocking the trade bill.

The United States and Canada are the world's largest trading partners, and both nations would benefit from an equitable trade relationship. But entirely free trade will not accomplish this, since adopting the agreement forces Canada into a potentially fatal reliance on the United States.



Letters

Unjust

I was disappointed in The Daily staff for its failure to capture the true spirit of Homecoming again this year. Are people arrested at parties the only newsworthy activity the reporters could find ("Police arrest 19 in party sweeps," Oct. 10)? Where were your cameras just hours before, during a spectacular parade, bonfire and coronation? Are those 19 people the only individuals who merit recognition?

Thousands of students, staff and alumni had a positive effect on this year's Homecoming. When do the people who spent long hours planning events, constructing floats and practicing in the marching band get recognized?

All of the people involved in this year's Homecoming worked hard to unify our campuses and celebrate 75 years of University tradition. The Daily's biased, limited coverage did these people and our school a great injustice.

Ann Henkels
College of Agriculture senior

False identity

Although I'm reluctant to tarnish my new party-hardy image, I've just got to say, "Will the real Kenneth Purcell please stand up?"

Now that I'm standing, I'd like to also say that, after checking with our front office, I'm the only Kenneth Purcell in mechanical engineering. In fact, I'm the only one in the phone book. And contrary to The Daily's story ("Police arrest 19 in party sweeps," Oct. 10), I wasn't at a party in northeast Minneapolis last weekend. I didn't challenge the police and I wasn't issued a citation.

Maybe this guy just plucked my name from the student directory, but I suspect otherwise. I think it was really my alter ego that was busted Saturday night. While I was home having dinner with my wife and listening to Vivaldi, he raced around on his motorcycle, drank half a keg, cranked the tunes and wrestled with the cops.

One thing's for sure, though: It's going to be my alter ego that pays the \$700 fine.

Kenneth Chin-Purcell
Graduate student

Heritage

I have never been inside Memorial Stadium. I came to the University in 1986, and by that time it had been empty for years. However, I have walked up to and looked through the fences surrounding it.

Memorial Stadium is more than a place to play football: It is a monument to Minnesota war dead. Like other historic buildings on campus, it is an important part of the University's heritage and history. It should be treated as such.

Minnesotans, especially University students, are rightfully proud of this building. This is a case where pride ought to prevail. Surely, a way can be found to save Memorial Stadium.

If you haven't done so, I encourage you to take a moment and look through the fences. See if you agree.

Gary Hornseth
CLA senior

My school too

Michael Hartmann's Tuesday column ("An alternative view," Opinions, Oct. 10) presented an argument that said it doesn't really matter where the football team plays. "It's not the place," he wrote. "It's the people."

I'll buy that: It's the people (regents, faculty, students and alumni) who were told by Paul Giel and his downtown gang that the move to the dome would help recruiting, attendance and, thus, the team's performance. We're all for that, aren't we?

Let's check the results. After several years in the plastic palace, the team has improved to the point where it can tie Northwestern. Wow!

When some of us finally began to speak up in support of moving football back to campus (I know, I know — a pathetic, "too little, too late" move), Clinton Hewitt and friends decided to undercut the regents' authority by surreptitiously beginning construction in the wee hours of Oct. 11.

Yes, it is the people: the people who keep getting jerked around by a University hierarchy that doesn't give a damn about them. Could that be why Hartmann sees a difference between Wisconsin fans, who turn out and have a great time seeing their team lose

to Northwestern, and Minnesota fans who see the same thing happen? It just doesn't feel like it's *our* team. If it did, I'd be at the games, win or lose. But because the team has been whored to the god of almighty downtown bucks, it doesn't represent those same people about whom Hartmann spoke.

Do me a favor, regents: Do the right thing. Use some of your 18 percent tuition hike and bring Minnesota football back to Minnesota's campus. Otherwise, please change the team's name to the Downtown Athletic Club or something. You might as well — the team sure doesn't have any ties to the University of Minnesota anymore.

Bill Zipp
Graduate student

Another number

This is the first University Homecoming I've been to in 11 years. Coffman was near deserted, save a few alumni revisiting fond memories. Incredibly, the streets of Dinkytown were not bustling with people anticipating the game. As I walked to the mall to do homework in front of Northrop, my heart jumped at the sounds of drum corps bringing memories of Homecomings past to life.

The longer I was at the mall, the more depressed I became at the lack of students and alumni present to share the festive atmosphere of Homecoming. I remembered it was football games I attended as a youngster that made me want to earn my degree from the University. I longed to write an eloquent letter to the regents that would capture my feelings, but the words wouldn't come.

Then I read the words inscribed above Northrop. It occurred to me that the regents need no more eloquent words than those to remind them of their duty.

The alumni have fond memories of Homecomings at Memorial Stadium. Will today's students be tomorrow's alumni with fond memories? I fear not. Regents: Please bring Homecoming home!

R. David Larkin
Student 0967126

Republican platform has little appeal for women

Bush cannot deny his part in Reagan administration's years of sexist policy-making

By Barbara Scott

Todd Metoxen's Opinions piece ("Bush may have trouble stepping over gender gap," Oct. 4) once again revealed the shortsightedness and skewed priorities of the right wing and its lack of appreciation for the principles upon which this country was founded. Let's take a look at the Reagan-Bush record, the record of which George Bush and Dan Quayle claim to be so proud.

How about the Reagan-Bush attempts to gut child nutrition and immunization programs, their hostility toward health care for the poor (mostly women and children) and their negative attitude toward education from Head Start programs to college aid programs? Not to mention their ambiguous stand on equal rights for women and minorities and their attempts to gut Title IX. Sorry, George, but the fact that your boss nominated one woman (no minorities) to the Supreme Court does not put you at the head of the civil rights movement. The word "token" springs more to mind.

And the Republicans wonder why there is a gender gap. Well, maybe it's because women are tired of the Reagan-Bush administration's attempts to take away hard-won rights through legislation, unilateral action by the Justice Department and high-court appointees. Reagan and Bush like to spout off *ad nauseam* about "the family" and "family values." I'd like to know exactly what it is they support. Could they be endorsing the idea of parental leave, so families can give their children a healthy start in life, and so the parents of sick children can look after their kids without losing their jobs? Could they be for health insurance for the poor, so the poor can afford to keep their kids healthy and take jobs that offer no health benefits, thereby getting off welfare? Could they be advocating reasonable day care?

"And the Republicans wonder why there is a gender gap."



Well, Bush seems to be back-pedaling now, but he certainly hasn't been pushing these family-oriented measures for the last 7 1/2 years. I guess he got the word from his image-makers that a lot of people in this country — women and men — feel these issues are more important for the well-being of this country than throwing more money into that rat hole otherwise known as the Pentagon. Maybe it's beginning to dawn on old George that real support of families and education might reduce the problems of teenage pregnancy, crime and drug abuse, problems that cost us a lot of money. Maybe he's coming to realize that the old saying isn't so silly after all: An ounce of prevention is worth a pound of cure. Maybe, but George has flip-flopped on so many issues since 1980, it's hard to know what he believes.

Look at his record, he says. Well, I'm looking, and I don't see anything to brag about. Remember, it's the Reagan-Bush administration that gave us Ann Gorsuch Burford, James Watt, Ed Meese, Michael Deaver and dozens of other public officials with questionable ethics, to say the least. It's the Reagan-Bush administration that has been a disaster for the environment. It's the Reagan-Bush administration that has been consistently trying to restrict free access to information about what our government is doing. And it's the Reagan-Bush administration that sold arms for hostages and bypassed the laws of this country in doing so. Maybe that's why George is avoiding the issues and keeps concentrating on such right-wing hobby-horses as prayer in the schools and the Pledge of Allegiance.

I guess the Republicans have forgotten, or perhaps never learned, that not everyone in this country is Christian. More importantly, they seem to have forgotten the constitutional requirement of separation between church and state. How do the Republicans propose to deal with non-Christian teachers who don't feel they can lead prayers? Are they going to say they are unfit to teach our children? And how are they going to decide which prayer to use? It is totally irresponsible to inject such a personal and divisive issue into such a public arena. If parents are that concerned about their children's spiritual development, then it is their responsibility to nurture it themselves, either at home or by sending their children to parochial schools. Furthermore, there is nothing to keep a child from praying silently anytime he or she feels the need.

And now, the Pledge of Allegiance. You'd think those few sentences had been written in stone. Actually, the pledge is less than 100 years old and the phrase "under God" was added during the McCarthy era — hardly a recommendation. Maybe George and the rest of the Republicans should make the words "liberty and justice for all" a reality before forcing people to say them.

Judging by his uncritical support of Reagan's policies, both legal and illegal, by his complete lack of understanding of the problems faced by ordinary Americans, and his total lack of feeling for those not born rich, white and male, I'd say the prospects for this country under a Bush-Quayle administration are pretty grim. It's time to admit that this country has many serious problems that are not going to disappear in spite of the Bush-Quayle attempts to ignore them.

It's time to elect a president who is willing to face up to these problems, not sweep them under the rug with a few pseudo-patriotic phrases. That's why we need Michael Dukakis and Lloyd Bentsen.

Barbara Scott is a graduate student in the Center for Ancient Studies.



Illustrations/Greg Nesbitt

Bush and Quayle will find that there are no coattails to pull them over the gender gap

By Melanie F. Wright

The Opinions piece by Todd Metoxen, "Bush may have trouble stepping over gender gap" (Oct. 4), is so laden with sexist stereotypes that it is difficult to know where to begin a reply.

By all means, let's recall the 1984 election. That was the year in which the voters, fed up with the anti-poor, anti-woman, warhawking attitudes of a Republican Party that had strayed too far to the right, elected Democratic majorities in the House and in dozens of state legislatures, and elected the most Democratic governors in recent memory. In those pre-Contragate days, President Reagan's Teflon coat was in good shape, and hence he escaped the general Republican rout. And of course, Georgie came along for the ride.

I am appalled by Metoxen's dismissal of day care as a frivolous issue that doesn't compare to "important" things such as "standing tough on crime." Of course, one needn't actually do anything about crime (Reagan's savaging of the Coast Guard's budget proves that); macho posturing is enough. It is this outdated *machismo* that leads us to spend billions on a Star Wars system that every respectable scientist has assured us will not work. Our military budget is the highest it's ever been, yet we are supposedly at peace. It is this macho mindset that engineered blatantly false pretexts for the invasion of Grenada and the bombing of Tripoli. There is one candidate who is talking about the important issues in this campaign, such as child care, housing, poverty, education and a woman's right to choice. That candidate is Michael Dukakis.

It is truly amusing to me to hear the National Organization for Women referred to as "leftist" and "militant" (the complaint of most feminists is that it is far too middle-class, WASPish and conservative); but what disturbs me is Metoxen's evident glee that these uppity women are no real threat to the misogynist domination of the GOP. Metoxen has failed to grasp the most obvious lesson of the '84 election: It was Reagan as a person who received a lot of support, not his conservative positions. Poll after poll has shown that the majority of people in this country support a woman's right to choose an abortion. The majority of people support the Equal Rights Amendment! (this majority comes close to

unanimity when people are read the text of the ERA without identifying it as such). The GOP's misogyny is not only morally reprehensible, but it is also clearly out of touch with the majority of American opinion.

It is a hard but clear fact that under the Reagan-Bush regime, the rich have gotten richer and the poor have gotten poorer. The disparity between rich and poor is larger now than it has ever been. There are thousands more homeless people now than in 1980, the majority of whom, studies show, are not mental patients, but ordinary people who have experienced the ravages of Reaganomics firsthand. The budget deficit of the Reagan-Bush years is larger than all previous deficits combined, and yet George Bush proposes a tax cut for the richest among us! The statistics prove that trickle-down just doesn't work. When will George learn?

Under Reagan-Bush, we have seen the feminization of poverty. For the first time, the vast majority of poor people in this country are women and children. Most families living in poverty are headed by single mothers. Nearly a quarter of our children now live in poverty, and nearly half of all black children. Analysts say that, in addition to the inadequacy of the minimum wage, the biggest reason why single mothers stay on welfare is the lack of adequate child care. Children growing up in poverty are far more likely to become school dropouts, welfare dependents and criminals. The lack of a national family policy (we are the only industrialized nation in the world without one) is ravaging this country. Oh, but of course these are just women's issues, not as important as "standing tough." Did George ever think of eliminating crime at its roots, instead of macho posturing when it's too late?

Fortunately for all of us, William F. Buckley Jr.'s wishes notwithstanding, not just the rich can vote in this country. Bush is running an image campaign, trying to tell us that things have never been better, that all we need is more of the same. Well, maybe for rich white men, but not for the rest of us. This election is not about standing tough; it is about child care, housing, education, health insurance and an end to a military madness that is mortgaging our future. That is why Michael Dukakis will win this November.

Melanie F. Wright is a graduate student in the Center for Ancient Studies.



Macintosh Users! Now Try Our LaserWriter.

Also available at Dinkytown II store only: high resolution flat-bed scanner, and IBM LaserWriter and Kyocera print-outs.

Kinko's offers self-serve Macintosh terminals and LaserWriters at four Twin Cities locations (see below). Call the store nearest you to reserve time on a terminal, or to reserve a spot in one of our free introductory classes on the use of this equipment.

kinko's copies

Dinkytown II
-24 Hours-
331-3080

Uptown
-24 Hours-
822-7700

St. Paul I
-24 Hours-
699-9671

Richfield
NEW!
866-1900



Eucharist Today



October 12
12:15 p.m.

Music • Eucharist • Soup

Episcopal/Lutheran Center
317 17th Ave. SE, Mpls • 331-3552

THE BIKE SHOP

Bicycles, Sales, Service, and Parts



FALL BIKE CLEARANCE

ALL BIKES IN STOCK

10% OFF - \$18⁰⁰ to \$85⁰⁰

215 Oak St. (Stadium Village)
331-3442

Hours: M-TH 9am-8pm • Fri 9am-6pm • Sat 9am-5pm • Sun 12pm-5pm

Police catch suspect in pizza robbery

St. Paul (AP) — A man who was caught with a stolen, half-eaten pizza in his oven was arraigned on felony charges Tuesday in Ramsey County District Court.

James Robert Carriger, 24, appeared before Ramsey County District Court Judge Robert Marsden, who set bail at \$2,500.

Carriger is suspected of calling a pizza delivery service Sunday about 9:30 p.m. and asking for a Canadian bacon pizza to be delivered to another address. When the pizza was delivered, the deliveryman was robbed of it, according to police reports.

The deliveryman called police, who tracked the suspect using a dog that followed the pizza scent to Carriger's apartment several blocks away, according to the police.

Inside, they found a phone book opened to the page containing the number of the pizza delivery service and the half-eaten pizza in his oven, police said.



YOU'RE NEEDED ON THE WEST BANK UNION BOARD APPLY NOW AND BE A GOVERNOR

DESCRIPTION: You can be a part of the WBU governing board, help formulate policy, set goals and see results in partnership with the WBU staff.

BENEFITS: You can learn management, leadership and communications skills — along with meeting new people and building your resume — while performing a valuable service to the WBU and the University.

APPLICATION DEADLINE: October 21, 1988, 4:00 p.m.

Pick up applications at 130 WBU or call 624-5200 for more information.

7813

The Gang's All Here.



Meet up with the crowd at Big 10

Great Food
Low Prices

It's the other Student Center

Dinkytown Dome (upstairs)
Stadium Village

10 A.M. to 10 P.M. 331-3687
10 A.M. to 1 A.M. 378-0467

Picture I.D. Required

Hockey STUDENT SEASON TICKETS

ORDERING INSTRUCTIONS

1. Pay by check or money order only. Make payable to the University of Minnesota.
2. COMPLETE THE APPLICATION CAREFULLY.
3. Applications will be accepted by mail or in person at the Bierman Building Ticket Office. More applications will be available at the Bierman building.
4. GROUP ORDERS MUST BE SUBMITTED AT THE SAME TIME. No additions will be made to groups once the order is in the Ticket Office. Groups must be limited to 10 or less.
5. All locations will be assigned by lottery. Only those applications received by October 7 will be considered in the first lottery.
6. An unrestricted GUEST season ticket may be purchased at the student rate.
7. Pick up tickets in person beginning Monday, October 17. At that time show ID card and paid Fall Fee Statement.

FOR MORE INFORMATION, PLEASE CALL 624-8080

ATHLETIC TICKET OFFICE
Bierman Field Athletic Building
516 15th Avenue S.E.
University of Minnesota
Minneapolis, MN 55455



\$73⁵⁰
21 HOME HOCKEY GAMES

Student Season ticket to a specific reserved seat
Only \$3.50 per Game on Season Ticket rate only.

PLEASE PRINT
Student
Name: _____

Phone: _____

Zip: _____

PRINT INITIAL
OF LAST NAME

HOCKEY

READ INSTRUCTIONS BEFORE ORDERING

Height Preference (if available when order is assigned).
Hockey: "A" Deck "B" Deck "C" Deck

This is to certify that I have read the regulations and agree to abide by conditions set forth. I will pick up my own ticket (s) and show my ID and proof of student status at that time.

I.D. NO. _____

Signature _____

University of
Minnesota
1988-89

HOCKEY TICKET APPLICATION STUDENTS

RESERVED

Student at \$73.50 ea. \$ _____

Student Guest at 73.50 ea. \$ _____

Remittance payable to U. of Minn. \$ _____

For Office Use Only

Participants: Attentiveness, improvements stop assaults

Defense from 5

such as upgrading lighting, installing mirrors in hallway corners and placing safety alarms in bathrooms.

Sam Lewis, director of the University's registrar office, said the suggestions will be forwarded to physical plant officials.

Workshop participants said safety improvements on campus were long overdue.

"I park my bike in the racks (behind Williamson Hall) and it is pitch black," said Cynthia Ryg, a University office specialist. "They could bang you on the head and drag you in the bushes. It makes me very nervous."

But being nervous plays an important part in helping women defend themselves, said Mary Brandl, a self-defense instructor who also spoke at the workshop.

Fear helps women to be more aware of their surroundings and to distance themselves from potential attackers, she said.

"Learn to trust what your body is telling you," said Brandl. "Don't wait to see if it's going to get worse. Know what your options are in every situation."

To fight off sexual assault, Brandl suggests women strike the attacker's windpipe with a fist, stab his neck with a pointed object or slam both hands over his ears.

Stun guns, mace and shriek alarms are not always reliable or practical, she said.

"Weapons can be turned against the victim," Brandl said. "Don't get physical unless nothing else is available. And if you're going to fight back, give it everything you've got."

Most staff members agreed that the workshop provided them with tools to defend themselves.

"There are a lot of things at our disposal without having to take karate lessons," said Steve Hawras, a senior office assistant in records maintenance.



Gathering celebrates coming out for gays

But going public can be complicated in a homophobic world, speaker says

By Michael Olenick
For The Daily

When Brian Coyle wrote an article about not being ashamed to be gay, he wasn't very open about it.

The Minneapolis City Council member used a pseudonym to hide his identity.

Realizing the contradiction, he wrote a second article using his real name.

Memories of days past returned Tuesday for Coyle (DFL-Sixth Ward) and two other gay community leaders, who recalled their anxiety over becoming openly gay.

The atmosphere was tense but friendly as the three spoke to University students at West Bank Union during the Universi-

ty's celebration of National Coming Out Day.

Gays and lesbians across the nation celebrated on Tuesday the experience of going public about their sexual orientation.

"It's easy to come out, but everyone has to do it in their own time and their own way," Coyle said.

But Gary Thomas, a University humanities professor, said coming out is complicated because the fear of gays and lesbians runs rampant at the University and elsewhere.

"Homophobia is not only alive and well but deeply entrenched at the University of Minnesota," said Thomas, who also spoke at the event.

He said being openly gay never stops — gays and lesbians have to keep reaffirming their status to friends and family.

Consequently, Thomas said, being open is a lifelong process and, as a result, jobs, family and friends are often lost.

"What it ultimately comes down to is choosing life (coming out) over death (hiding your sexuality)," Thomas said.

State Rep. Karen Clark (DFL-Minneapolis) said coming out as a lesbian is primarily a political decision.

She said the Vietnam War made feminists out of many women and the women's movement made lesbians out of many feminists.

The three speakers, however, agreed that it is important for gays and lesbians to be open about their sexual orientation.

"We can learn from the blacks, Hispanics and American Indians about reclaiming our own history and from the Jews about the

horrible consequences of silence," Thomas said.

Clark recalled a meeting on state agriculture when a colleague suggest the state should "invest in dikes across Minnesota."

At first, Clark said she found the wording funny, thinking about the slang term for a lesbian — dyke. But when she realized no one else was thinking as she was, Clark said it only made her feel lonely.

For people who have AIDS, Coyle said, the coming-out experience occurs a second time. But he said the AIDS crisis has pulled the gay and lesbian community together.

"To my straight sisters and brothers I say share our joy," Thomas said. "To my gay (and) lesbian brothers and sisters I say break the silence."

FALL FOR OUR LOOKS



\$3 Off A Designed Haircut (Reg. \$14-16) With selected stylists only. Valid only with this ad. Not valid with other discounts. Offer expires Oct. 19, 1988.

\$10 Off Perm And Cut Special (Reg. \$52-54 long hair extra) Valid only with this ad. Not valid with other discounts. Offer expires Oct. 19, 1988.

Appointments available but not always necessary. Featuring Aveda, Paul Mitchell, And Sebastian products. Refills available.

KR
KENNETH RILEY
M.E. GORSKY


321 14th Avenue S.E.
Dinkytown • 331-9030

24 hours **7 Days a Week**


We're Always Open Great Service for Great People

- * 24 hr. Towing 378-2065 *
- 24 hr. Mechanical Service
- Tune-Ups • Brakes
- Tires • Batteries • Exhaust
- All Types of General Repairs
- Snacks • Pop • Cigarettes
- Tires Of All Types

Southeast Amoco Service
10th and University Ave. SE
331-2244



Mr. Tire Southeast
10th and University Ave. SE
331-2248



Lightning Lube 15 Minute Oil Change



10% OFF TIGHTS & BIKE SHORTS
Until 10-15-88

Save \$\$\$ by joining the Outdoor Store. The annual fee is \$2.50/students, \$5.00/staff & faculty. Lower prices good for members only. (No membership fee required for rental.)

OUTDOOR STORE

IN THE ST. PAUL STUDENT CENTER
Hours: Tues-Sat 9-5
Mon 8-5
Wed til 8 pm

VISA & MASTERCARD ACCEPTED
625-8790

TO GET A BLUE RIBBON, COME IN FIRST.





STUB & HERB'S
Oak & Washington Stadium Village
379-1880

You don't have to be the first person in to enjoy specially-priced Pabst beer Thursday from 7 to 11pm. But you will want to get here early. And don't forget that Wednesday is pitcher night.

Sue Sauer contributes her time and dollars to United Way and the American Heart Association.



“I volunteer at the American Heart Association because I can see the direct effects my United Way contribution is having in helping in the fight against heart disease. Every day I work with children here at the University of Minnesota Hospital who will be able to go home and lead healthy lives because of the education and research efforts of the American Heart Association. I know my contributions are making a difference—that’s why I support the United Way.”

**Sue N. Sauer, RN, MA
Clinical Nurse Specialist
Pediatric Cardiology & Nephrology
University of Minnesota Hospital
Board Member,
American Heart Association**


Sue and other university employees are deeply committed to a system that makes life better for all of us. They know their dollars are being responsibly distributed to 360 health and human service programs at the 116 agencies listed below.

This year, please help respond to our community’s challenges and join Sue in answering...

I Will!

The United Way
If you don't give, who will?

- | | | | | |
|--|--|---|--|--|
| <ul style="list-style-type: none"> AccessAbility, Inc. Accessible Space Alexandra House, Inc. American Cancer Society American Diabetes Association, MN Affiliate, Inc. American Heart Association, MN Affiliate, Inc. American Indian OIC, Inc. American Red Cross, Carver County American Red Cross, Mpls. Chapter (Dakota County) American Social Health Association Anoka County Health & Social Services Department Arthritis Foundation, MN Chapter Association for Retarded Citizens—Anoka County Association for Retarded Citizens—Hennepin County Association for Retarded Citizens—Suburban Big Brothers/Big Sisters of Greater Minneapolis Bloomington Public Health Service Boy Scouts of America—Viking Council The Bridge for Runaway Youth Camp Fire, Minneapolis Council | <ul style="list-style-type: none"> Carver County Care Center Carver-Scott Cooperative Center Catholic Charities, St. Paul/Minneapolis Center School, Inc. Central Center for Family Resources Centro Cultural Chicano Centro-Legal Charities Review Council of MN Children’s Dental Services Association Children’s Home Society of MN Chrysalis Center for Women The City, Inc. Community Action Council, Inc. Community Clinic Consortium The Annex, Beltrami Health Center, Community University Health Care Clinic, Health Etc. Clinic, Southside Community Clinic, West Suburban Teen Clinic Community Emergency Assistance Program Courage Center Division of Indian Work Domestic Abuse Project, Inc. East Community Family Center East Side Neighborhood Service, Inc. Ebenezer Society Eden House | <ul style="list-style-type: none"> Emergency FoodShelf Network, Inc. Emergency Fund Service, Inc. Epilepsy Foundation of MN Episcopal Community Services Family & Children’s Services Family Networks, Inc. Freeport West, Inc. Genesis II for Women, Inc. Girl Scout Council, Greater Minneapolis Glenwood-Lyndale Community Center, Inc. Greater Minneapolis Council of Churches Greater Minneapolis Food Bank Harriet Tubman Women’s Shelter Illusion Theater & School, Inc. Indian Family Services Indian Health Board of Minneapolis, Inc. Institute on Black Chemical Abuse International Institute of MN Jewish Community Center of Greater Minneapolis Jewish Family & Children’s Service Judicare of Anoka County, Inc. Katahdin, Inc. Learning Disabilities Association, Inc. (LDA) Legal Advice Clinics, Ltd. Legal Aid Society of Minneapolis Legal Rights Center, Inc. | <ul style="list-style-type: none"> Loaves and Fishes, Too Loring Nicollet-Bethlehem Community Centers Lutheran Social Service of MN Management Assistance Project MELD Mental Health Association of Minnesota Metropolitan Visiting Nurse Association Minneapolis American Indian Center Minneapolis Crisis Nursery Minneapolis Society for the Blind Minneapolis Urban League Minneapolis Youth Diversion MN Alliance for Health Care Consumers MN Assn. For Children & Adults with Learning Disabilities MN Citizens Council on Crime & Justice MN Foundation for Better Hearing and Speech Multi Resource Centers, Inc. National Council on Aging, Inc. National Council on Crime & Delinquency Neighborhood Involvement Program Opportunity Workshop, Inc. PPL Industries, Inc. Phyllis Wheatley Community Center Pillsbury United Neighborhood Services, Inc. | <ul style="list-style-type: none"> Pilot City Health Center Plymouth Christian Youth Center Relate, Inc. Rise, Inc. Sabbathani Community Center The Salvation Army Scott-Carver-Dakota Community Action Agency, Inc. Senior Community Services Senior Resources Sojourner Shelter Southern Valley Alliance Southside Family Nurturing Center Storefront/Youth Action Survival Skills Institute TCOIC United Service Organization (USO)—Vail Place Washburn Child Guidance Center Wayside House, Inc. Wellspring Therapeutic Communities YES/NEON Young Men’s Christian Association (YMCA) Young Women’s Christian Association (YWCA) |
|--|--|---|--|--|



COFFMAN MEMORIAL UNION - HELP WANTED: VOLUNTEER OPPORTUNITIES

COFFMAN UNION BOARD OF GOVERNORS

Provide leadership and gain experience as a voting member of the Coffman Memorial Union Board of Governors (CMUBOG). You, in partnership with the CMU staff, will formulate policy, determine how your student fees will be used, and help oversee CMU operations, programs and services. You help make the decisions affecting your campus life!

Choose a leadership position as a representative for:


| | |
|---|---|
| <input type="checkbox"/> College of Liberal Arts | <input type="checkbox"/> College of Education |
| <input type="checkbox"/> General College | <input type="checkbox"/> Graduate School |
| <input type="checkbox"/> MISA (Minnesota International Student Association) | <input type="checkbox"/> CHIP (Council on Health Interdisciplinary Participation) |
| <input type="checkbox"/> Institute of Technology | <input type="checkbox"/> COGS (Council of Graduate Students) |

Applications (available in 220 Coffman Union) are now being accepted for the 1988-89 term. For more information, contact Rufus Simmons or Bobbee Bengston at 625-4455.

CMU MISSION

- To contribute to the University community;
- To provide services, conveniences and amenities to the University Community;
- To provide services and programs to meet students' needs;
- To make free-time activity a cooperative factor in the students' total education;
- To provide opportunities for growth and group effectiveness;
- To provide for an open forum for diversity of people and ideas.

COFFMAN UNION PROGRAM COUNCIL (CUPC)



You don't have to apply for leadership positions to become involved in what's happening in Coffman Union. In addition to the leadership posts, there are other volunteer openings in each of the following:

- Cultural
- Educational
- The CUPC Public Relations/Publicity Agency
- Personnel
- Multicultural Programs
- International Programs
- Social/Recreational

The University of Minnesota is committed to the policy that all persons shall have equal access to its programs, facilities, and employment without regard to race, religion, color, sex, national origin, handicap, age, veteran status, or sexual orientation.

CUPC offers a variety of opportunities in programming, leadership and communication skills. As a CUPC member, you'll plan, implement and evaluate educational, cultural, social/recreational, multicultural and international programs.

The following positions are available for the 1988-89 school year:

- CULTURAL COORDINATOR** oversees the planning, implementation, and evaluation of performing arts, the Whole, film arts, and visual arts programs.
- MULTICULTURAL COORDINATORS** oversee the planning, implementation, and evaluation of programs which address issues of racism and other forms of oppression.
 - Hispanic Coordinator
 - Asian/Pacific Coordinator
- INTERNATIONAL COORDINATOR** oversees the planning, implementation, and evaluation of programs focused on issues of cross-cultural understanding and global citizenship.

QUALIFICATIONS
All COORDINATOR positions require a minimum of two quarters of programming and/or student leadership experience in the Unions or within another organization, and preferably some previous involvement in the kind of programming related to the specific area.

Contact Bernie Molitor or Krista McCallum at 625-3502 or Richard Melton at 625-4455. Applications are available in 220 Coffman Union.

The test: better than a college degree

Test Your Cultural Literacy

Diane Zahler and Kathy A. Zahler
Paperback, 288 pages
ARCO, \$7.95

I hate books like *Test Your Cultural Literacy* for the same reasons I hate Trivial Pursuit and its clones. I hate that fake tension of "taking a test." I hate

Meg Spilleth is a columnist for Arts and Entertainment, a writer for the Twin Cities Reader, a frequent contributor to Words Worth, and still finds time to watch Pee Wee's Playhouse.



Culturally literate authors Diane and Kathy A. Zahler: the women with the answers.

the fake feeling of accomplishment when I know the answer to some esoteric question that has nothing to do with the real world. I hate feeling embarrassed when I don't know the answer to some obvious question so necessary to cultural functioning it's published in a book.

Reviewed by Meg Spilleth

When I miss questions, I blame it on a deprived childhood. Or I get self-righteous about all the concepts I know that are too profound and brilliant for authors of books like these. "Of course," I think, "if these were essay questions, I would have done much better."

I hate this kind of book. Unfortunately, they're multiplying along with the education-reform books — you know,

the ivy-league authors complaining that today's teenagers don't know, as one professor put it bluntly, "shit from Shiloh." You see those reports on the news about kids who don't know when or where the Civil War was fought, and you buy a book like this, work through it in a closet, and hope you're smarter than those acid-washed-denim twinkies on the Coast.

"Cultural literacy" is defined by the authors of this book in a way that would be infinitely pleasing to former Secretary of Education William Bennett. It would also please his doomsaying crony, Allan Bloom, who would have everyone quothing Virgil and pooh-poohing such ungodly "academic" trends as, good heavens, *feminist criticism*. It conforms well to that bare-minimum expectation of the average public-university liberal-arts graduate, who took the freshman "humanities" courses before moving on to business administration.

It is that implication of "minimum" that makes this sort of book particularly volatile. Who is to say what is a relevant question; who can judge what someone ought to know? Reams of history are left out — entire continents and peoples are left out. But this is only a paperback, and this is only a test: a liberal-arts degree diminished to cocktail chatter.

The book's 14 tests cover everything from civics to physical science to literature to music to world history. There is a fairly standard, comprehensive bibliography to each chapter — perhaps the most valuable part of the book — and the answers to each question are briefly but succinctly explained. The format, however, is multiple-choice. There may be no other suitable structure for such a book

for such a purpose, but the authors are occasionally a bit flip in the options: Joan of Arc, for instance, is characterized as "a French peasant who was burned at the stake for witchcraft" (a little simplistic); and a possible identification for Walden Pond is "the body of water in which Virginia Woolf drowned herself."

The "cultural literacy" advocated here, then, provides that basic gloss of metaphors and Latin terms needed to work through a medium-brow dinner-table conversation, or the editorials in certain news and opinions magazines. But the danger lies in believing that what is contained in this book is *enough*.

It's not. For one thing, the culture we live in every day, the culture of modern America, gets only the most cursory treatment. Television, sports, and the cinema are not considered at all. The implication has always seemed to be that if it's not somehow restricted — if it's readily available to "the masses" — then it isn't "culture." It seems ridiculous to expect someone to know classical mythology, but not to apply its themes to analyses of modern "entertainment." It seems ridiculous to settle for a passing knowledge of facts — wide and shallow, and not easily disturbed.

I took all the tests in this book (and didn't get any credit, either). I did just fine in the artsy-fartsy sections on music, art, and literature; less well on history; and miserably in math and economics. No surprises there. But I gained no deep insights into American culture, and I still wouldn't attempt a Business Week editorial. Maybe I'm stubborn. Maybe I'm culturally illiterate.

Maybe this expensive liberal arts degree isn't worth the trouble. •

Local Corner

Writing about growing old

Full Measure: Modern Short Stories on Aging

Edited by Dorothy Sennett
Graywolf Press, 399 pp.
Paperback, \$10.00

Those of us who do not die young will participate in the inevitable democracy of old age. This great leveler holds a lurid fascination and chilly repulsion for us; we all hope to "do it" with grace, if not panache.

Reviewed by Elizabeth Mische John

Still, death is inevitable. If we survive our youth, it remains the certain outcome. And this certainty leaves us confused and foolish about what it is to be old; socially, old age is viewed with much the same embarrassment as dirty pictures.

Dorothy Sennett, the editor of *Full Measure: Modern Short Stories on Aging* recognizes old people as survivors in the pause between coming-of-age and going-home. In her preface to this anthology of 23 stories about the elderly, Sennett provides a litany of survival themes: "We survive in our attachment to living things. . . . We survive in our attachment to places. . . . We survive in things we have loved in our youth. . . . We survive in the connectedness of generations. . . . We survive in those we love profoundly. . . ."

Elizabeth Mische John is a graduate student in English.

This book beckons us to face what we are becoming, to consider both the vulnerability and toughness we each attain. This is all we finally carry, these stories tell us: what we are, what we might be. We confront ourselves in these pages from the point of view of aged characters: In Carol Bly's "Gunnar's Sword," a woman finds that the dependency of retirement-home living contradicts her sense of self and ethics and good taste. In other stories we view life from the perspective of mature children with aged parents, as in Hortense Calisher's "The Middle Drawer," in which a daughter mourns her mother and learns to forgive.

We also see the plight of the elderly from the frosty vantage point of the parent in the middle caring for the elderly mother or father and anticipating his or her own future dependency on adult children. Stanley Ellin's speculative "The Blessington Method," concerns a middle-aged son-in-law who logically justifies unburdening himself of the constraints imposed by his wife's elderly father.

The anthology is not a complaint against the coming of old age, but a challenging examination of the continuing nature of growth and heroism. In Joyce Carol Oates' story of an aging, isolated professor, comradery supplies the courage to rescue a tortured young boy failed by law and reason. It is not the professor's "Theory of Knowledge" that saves the child's life, but his understanding of suffering.

The failure of courage and the capitulation to hidebound opinion is the subject of Louis Auchincloss' "Suttee,"

where death wins a meaningless victory over comfort and tenderness. Jean Rhys' "Sleep It Off, Lady" is perhaps the most frightening story in the anthology and certainly the most bitter. In it, an old woman dies alone, a victim of booze and the sting of public opinion.

Several of these stories provide a peculiar sense of triumph, as in John Cheever's "The World of Apples" (from his early collection of the same title) and John Sayles' "At the Anarchists' Convention." In "The Resurrection Man" by Wallace E. Knight, the desire for death on one's own terms competes with the instinct to preserve one's own life. Knight ably upholds the dignity in small pleasures — hot soup and the friction of skin — and in principles well-defended.

Other writers represented in the anthology include the late Raymond Carver, Conrad Aiken, Saul Bellow, Nadine Gordimer, Bernard Malamud, and Grace Paley. Many stories are reprinted here for the first time, so that even the best-read reader will discover new gold between these covers.

The book is an act of inspiration on the part of Sennett, a retired Twin Cities social worker. For nearly ten years, this was her determined labor of love. With the encouragement of Carol Bly, and some serendipity, the book finally found its way to local Graywolf Press, where the project's value was recognized. The result is a contemporary book with a plurality of voices and quirkiness. Old age is part of life, the collection reveals, not some oddball phenomenon. *Full Measure* is brilliantly conceived and brilliantly accomplished. •



Illustration/Jeff Henneman

Not quite a life

Teddy Kollek:

Mayor of Jerusalem

Naomi Shepherd
Harper and Row, 175 pp.
Hardcover, \$16.95.

If you stop to think about it, there's a shocking paucity of prominent men in the world today who answer to the name "Teddy." In fact, off the top of my head, I can only come up with three: Teddy Kennedy, the liberal icon who, while remaining an undeniable force in American politics, seems to get sillier as he gets older; Teddy Higuera, the enormously talented but underrated baseball pitcher for the Milwaukee Brewers; and Teddy Kollek, Jerusalem's mayor-in-perpetuity.

Reviewed by
Jaime Henry Belland

Frankly, even after having examined Naomi Shepherd's slim volume, *Teddy*

Jaime Henry Belland is a less-frequent-than-he'd-like-to-be contributor to *Words Worth*.

Kollek: Mayor of Jerusalem, I am still less well-acquainted with Mayor Kollek than with Messrs. Higuera and Kennedy.

Part of the problem is Shepherd's *modus operandi*. Inexplicably, she attempts to fashion a biography of a 77-year-old man by focusing in large measure upon a narrow six-month period (late 1986 to early 1987). Hence, her material is limited to mundane events: Teddy mediates disputes; Teddy encounters the public; Teddy broods about running for re-election.

That Mayor Kollek is an extraordinarily compelling human being and Jerusalem a turbulent city of international significance makes Shepherd's failings particularly unfortunate. The situation is exacerbated by her pedestrian, almost perfunctory, literary style. She seemingly subscribes to the "he did this, she did that" school of writing.

Analysis is yet another skill that Shepherd never mastered. At one point she seeks to address Mayor Kollek's inextricable hold on the populace of Jerusalem. Her "explanation" boils down to a single quotation from a municipal employee: "Teddy Kollek is our father" — a heart-warming sentiment, but not much of an insight. Would that Shepherd



Jerusalem mayor Teddy Kollek.

had possessed the minimal curiosity required to pursue the obvious line of inquiry.

Readers anticipating lofty historical insights into the age-old conflict between Arabs and Jews will be sorely disappointed by this biography. At least, on this score, Shepherd merits points for candor; the foreword specifically (and unpretentiously) instructs us not to expect what we might otherwise have naturally expected.

The tome's six chapters are each titled in a gratingly predictable manner: "The View from the Mayor's Office," "The View from City Hall," "The View from the Alleys." Well, the view from this corner is that Naomi Shepherd's volume is cursory, ill-conceived, poorly-written, and, worst of all, boring. In short, *Teddy Kollek* the book inadvertently does a disservice to Teddy Kollek the man. •

Physics for

Interactions

A Journey Through the Mind of a Particle Physicist and the Matter of This World

Sheldon Glashow with Ben Bova
Warner Books, 347 pp.
Hardcover, \$19.95

Interactions, like so many others of its ilk and breed, suffers from a selfish duplicity. It tries to do two things at once. On one hand it strives to tell us the story of elementary particle physics, that

William Gruber is a graduate student in English who contributes frequently to *Words Worth*.

fleeing atoms insists on author-fessor, w show. Tl fascinat indulgen

Rev

Glashow assistant an explic discuss a pencha dishing himself with suc the real

History

How the west was financed

The Far West and the Great Plains in Transition 1859-1900

Rodman W. Paul
Harper & Row, 381 pp.
Hardcover, \$24.95

American history's most basic conflict — the resistance by Native Americans to white invaders — reached a climax on the Western frontier after the Civil War. When the U.S. Census declared the frontier closed in 1890, centuries of warfare had reduced by 90 percent the number of indigenous people; white settlements covered nearly the entire North American continent.

Until recently, this central conflict dominated histories of the post-Civil War frontier. Academic specialists of late, however, have written about specific

Bill Huntzicker, who grew up on an eastern Montana ranch, is a post-baccalaureate student in social studies education.

historical concerns of the area, such as law enforcement, vigilantism, immigration patterns, ethnic conflict, cattle drives, railroad building, mining, ranching, homesteading, feminism, gambling, prostitution, and social life. Yet historians rarely undertake a comprehensive overview.

Reviewed by Bill Huntzicker

The late Rodman Paul's *The Far West and the Great Plains in Transition* partially fills this void. But in his otherwise successful effort to reflect the ethnic diversity of the region, which was settled by European, Asian, African, and Mexican immigrants, Paul neglects the central conflict between Native Americans and whites. His treatment of the issue fills a mere 10 pages. Eighteen pages, however, are devoted to Spanish-speaking people, 12 to the Chinese, and eight to white ethnic groups.

Paul's appreciation of ethnic diversity reflects scholarship priorities popular in the 1970s. He addresses concerns of the 1980s as well, covering the concentration of capital, construction of transportation systems, abuse of animals and the land, and ethnic conflict. Despite his somewhat stiff academic writing, he avoids jargon in describing the region's infra-

structure and the massive accumulation of money by a few capitalists.

His story of railroad-building focuses as much on complexity as on villainy. Railroad investment carried considerable risk, he notes, despite massive federal land grants and competition among towns to provide economic incentives. Therefore corruption and scandal may have been the inevitable result of the quick accumulation of massive amounts of necessary capital.

Economic strife also influenced the development of Western mining. In the later days of mining, large companies bought up claims for huge operations to mine minerals more efficiently than individual miners could. From the Comstock Lode to Butte, mining degenerated into conflicts among ethnic groups and between workers and large mining companies. As newer processes required less labor, greater capital and larger mines became necessary. Farmers complained about the miners' environmental destruction, but city dwellers often sided with the miners, who were better customers.

Significantly, with its increasing dependence on technology, capital, and cheap labor, mining provided both the motivation for massive migration into the continent's interior, and the frontier's symbolic closing. The book is strongest



Glashow (left) and colleagues champion their tenuo

here, reflecting Paul's original research from two of his earlier books.

In a fascinating chapter focusing on the economic centers that emerged at Denver, Salt Lake City, and Portland, Paul covers the growth of the urban West, including San Francisco's dominant influence on the frontier economy. Paul also relates Western economic development to other markets: Wool production, for instance, depended upon industry in distant Boston, Philadelphia, New York, and Chicago.

Paul briefly considers the inclusion of the military with mining, livestock, and agriculture as a basic frontier industry, but then dismisses the theory in a single sentence. Still, he provides considerable evidence throughout that conflicts with this dismissal. For example, U.S. soldiers, sent to Utah to control the Mormons, actually provided an economic boost to the region with consumer purchases, governmental contracts, and the transportation necessary to sustain an army in a distant territory.

Yet Paul agrees that federal agencies became a major factor in the economy. The federal government, he writes, is the largest single employer in the Dakotas, Arizona, Utah and New Mexico. The author stops just short of calling the West a collection of interior American colonies, as some other historians and economists have done in recent years. These analyses contrast sharply with the mythical lone cowboy or pioneer at the mercy of nature.

All survey texts necessarily neglect some topics in favor of others; Paul's book slights recent social history and addresses work by women in the West only briefly in its conclusion. Unfortunately, these limitations prevent the book from representing a complete synthesis of recent scholarship. Yet Paul's strong contribution, especially on interest groups and economic history, cannot be ignored by future historians who undertake the unfinished challenge. •



Illustration/Jeff Henneman

C
A
A
F

Transla
Graywo
Paperba

A
E
notabl
Parodi
orable
donyr
repute
and se
Casart
for Es

A
Pi
has a
appea
sent o
ambig
of Dev
for bei
Bioy-C
ily on
and th
the mi

The
Casart
mixes

M.R.
tive Li

Science

s for "enquiring" minds

mind of the

fleeting stuff that springs forth when atoms are smashed; on the other hand it insists on telling us the life story of the author — Nobel laureate, Harvard professor, would-be writer — Sheldon Glashow. The result is a strange mixture of fascinating science and impertinent self-indulgence.

Reviewed by William Gruber

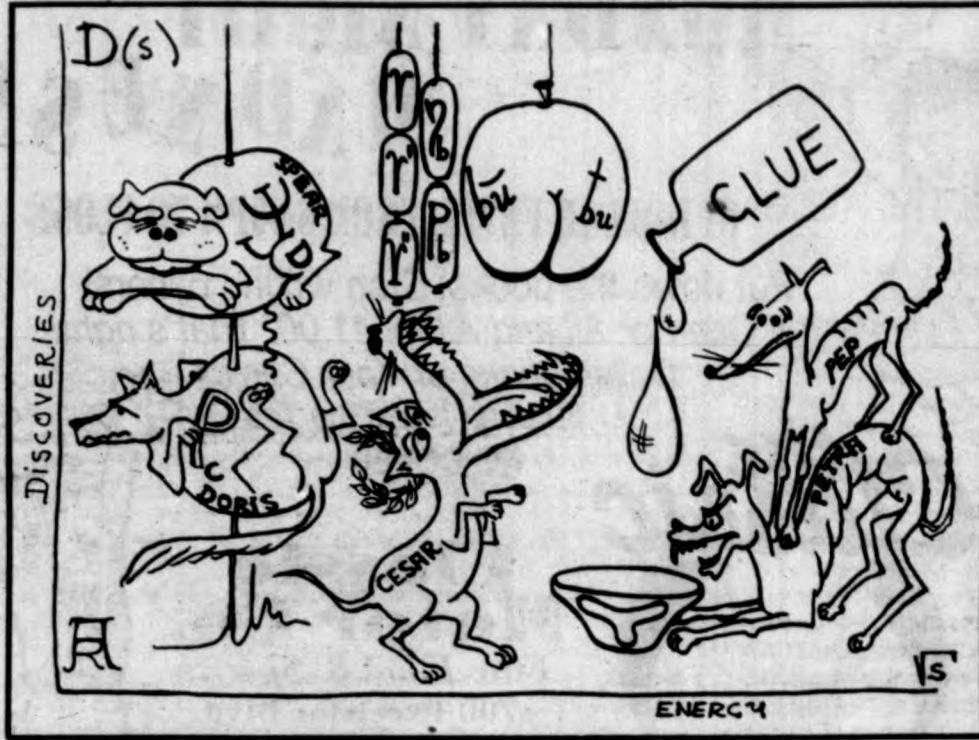
Glashow's book, written with the assistance of Ben Bova, is not so much an explication of particle physics as a discussion of the discipline. Glashow was a penchant for dropping names and dishing out desultory praise — both to himself and his colleagues. He does this with such regularity that it obtrudes on the real subject: particle physics.

Of course, there are oodles and boodles of physics in this book — all told in simple prose without mathematical sophistry — but the main thrust is: Who discovered what, when? A veritable *Who's Who* among the trendy atom-smashing crowd.

Stylistically, this makes for easy reading, even for the uninitiated. Beginning with the discovery of the electron in 1897 (thought to be the elementary particle at the time), Glashow marches us up to 1983 and the discovery of the W-Boson. In between we are introduced to myriad theories and discoveries, each one serving as a stepping stone for the next. Because Glashow chooses to reveal science through history we have a coherent storyline to follow. And though this is certainly not an original rhetorical device, it does make things flow. Glashow never jumps the gun by mentioning a breakthrough in 1962 while we're still discussing 1932. The greatest benefit of this style is that, as the theoretical foundations for each discovery grow more and more complex, Glashow can take us aside and give us an understanding of the basic physical concepts involved. Such things as gravity, special relativity, and group theory all come together in sensible fashion.

Still, *Interactions* suffers from a nearly universal flaw: disregard for the audience. Perhaps the greatest difficulty in writing science for the layman is bringing the audience and the subject together in a way that is both fascinating and informative. It takes a skillful writer to do this. Unfortunately, Glashow is not such a writer. He, like many other scientist-writers, fails to ask the cogent questions: Who is the audience? How much do they know?

Ironically, understanding the intricacies of a particular science often requires a basic familiarity with science. One does not study Shakespeare before one learns



A drawing prepared for Glashow by Alvaro De Rujula, reprinted from *Interaction: Science made easy?*

to read. The problem is that most scientist-writers refuse to accept this. They try to appeal to everyone. And either they lose the attention of the familiar reader by explaining tedious, mundane facts, or they confuse the eager neophyte by simply explaining too much. Incredibly, *Interactions* does both.

In the beginning Glashow takes it for granted that we are scientific dolt. He needlessly explains too much. Yet by the middle of the book we are supposed to understand such complex things as Gauge Theory and Lie Groups. It is hard to say who this book was written for. In the effort to attract a vast readership Glashow has sorely neglected his audience.

Unsettling though this may be, it is not the most annoying flaw. For reasons obscure and self-centered, Glashow deems it necessary to put his life on display. Interspersed amidst solid science is something akin to "Tales from the Dark Side of a Brilliant Physicist." We are treated to numerous impertinent episodes, such as: the time Glashow smoked hashish in Turkey and then gave the greatest lecture of his life, the years he spent gallivanting through Europe in sporty cars, the time he and 20 colleagues

wrote a letter to the New York Times regarding the injustices of the Vietnam War. What has this to do with particle physics? We wonder. It's not even told with amusing style.

There is one chapter, however, that will prove invaluable to those who believe they may win the Nobel Prize someday. Gratuitously, Glashow takes us with him as he embarks for Stockholm to collect his Nobel booty. Amidst all the pomp and circumstance there is something sure to catch the eye of Jackie Collins fans: gorgeous women in Oscar de la Renta dresses, men in black ties, elegant hotels and parties. And for no rational reason whatsoever the menus from these pompous soirees are included in the text. My, how impressive.

When we finally finish this technical tome we realize that even in the world of elementary particle physics, where the goal is simplicity, there is a complicated bureaucracy that confuses and confounds. To say everything stems from the quark will not suffice. A quark must be qualified with charm, beauty, strangeness. And so it is with this book. It is charmless and strange, and utterly lacking in beauty. •



es champion their tenuous theories.

al research
cs.
ocusing on the
ged at
Portland,
he urban
sco's domi-
er economy.
conomic deve-
Wool produc-
d upon
Philadelphia,

: inclusion of
vestock, and
er industry,
ry in a single
considerable
onlicts with
s, U.S. sol-
of the Mor-
economic
numner pur-
acts, and the
sustain an

ral agencies
he economy.
e writes, is the
he Dakotas,
exico. The
alling the
r American
torians and
ecent years.
rply with the
ioneer at the

ily neglect
ers; Paul's
istory and
in the West
on. Unfortu-
event the book
ete synthesis of
ul's strong
interest
ry, cannot be
is who under-
ge. •

Comparing styles: Adolfo vs. Jorge

A Plan for Escape

Translated by Suzanne Jill Levine
Graywolf Press, 116 pages
Paperback, \$7.50

Adolfo Bioy-Casares met Jorge Luis Borges in 1930 and collaborated with him on several projects, most notably *Seis Problemas Para Dom Isidro Parodi* (1941) and *Dos Fantasias Memorables* (1946), both written under pseudonyms. After the encounter, Borges reputedly declared Bioy-Casares "really and secretly the master" and Bioy-Casares wrote *Plan de Evasion (A Plan for Escape)*.

Reviewed by M.R. Axelrod

A Plan for Escape, like Kafka's *Castle*, has a main character, Nevers, who appears out of nowhere. He is curiously sent off to French Guiana to fill an ambiguous position on the penal colony of Devil's Island. At any rate, his reason for being there seems less important than Bioy-Casares' style. The work is primarily one of stylistics, at least in translation, and the novella seems to owe more to the manner of Borges than Bioy-Casares.

The most distinctive technique Bioy-Casares uses is a narrative structure that mixes past and present. He achieves this

by using a complex epistolary system throughout the novella, blending time into an indiscernible past and present.

Bioy-Casares uses historical figures imaginatively, as well as characters from other novels or titles of other works. The most unusual aspect of these references is the stylistic homage they pay — if not to Borges, than certainly with Borges in mind. The surfeit of allusions sounds as if Bioy-Casares sat at Borges' knee while the latter dispersed, in increments, all of the wisdom he gleaned while working in the libraries of Buenos Aires.

Though *A Plan for Escape* is an engaging text which amalgamates Bioy-Casares' penchant for suspense and his Latin sensibilities for imaginative literature, it is not of the magnitude of Borges' *Ficciones* (1944) or *El Aleph* (1949), both written at approximately the same time. Yet *A Plan for Escape* is a novel worth exploring. •



M.R. Axelrod holds a Ph.D. in Comparative Literature.

Calendar

Authors and artists on hand this week at the Hungry Mind include Mary La Chapelle, who will autograph copies of her first collection of short stories, *House of Heroes*, Friday at 8:15 p.m.. On Sunday at 1 p.m. Lynda Barry, a former Wisconsinite known for her cartoons ("Ernie Pook's Comeek"), coloring books, and novels will be around to sign her work. Both events are free and open to the public. The Hungry Mind is located at 1648 Grand Avenue, St. Paul. Call 699-0587 for more information.

The Rivendell Group, a local organization devoted to the study, discussion, creation, and enjoyment of myth, fantasy, and imaginative literature, will host a discussion Saturday afternoon at 1:30 p.m. in Coffman Union (room 327). Caroline Stevermer will discuss her two fantasy novels: *The Serpent's Egg* and *Sorcery & Cecelia*.

Yet another interpretation of Walt Whitman will be presented in "A Thousand Discords: The Civil War Penned by Poets and Composers", Thursday at 8 p.m. and Sunday at 3 p.m. in the Minneapolis Bakken Library. "A Thousand Discords" is the first concert in a series entitled Poets and Musicians which explores the connections between poetry and music. In this performance, featuring baritone David Harris, Whitman's prose and Jill Breckenridge's book *Civil Blood* will be combined with songs by Charles Ives, Leonard Bernstein and Minnesota composer David Edminster. Tickets are \$7 at the

door or by reservation. For more information call 227-2583.

As usual, the Loft is hosting an event of international proportions. Saturday at 11 a.m. Derek Walcott, a West Indian playwright and poet, will appear at a poetry workshop as part of the Mentor Series. Admission is free to University students and Loft members, \$2 for all others.

News flash

We really hate having to report this, but perhaps someone who makes millions out of telling people publicly that he's way too shy for public scrutiny had this coming to him.

Garrison Keillor, Minnesota's most familiar mascot next to Babe the Blue Ox — Garrison Keillor, whose turncoat tendencies faded in memory only when Pat (s)Miles abdicated to KARE — Garrison Keillor, who left St. Paul in a huff for New York and a certain very bland literary magazine — has just made an appearance in the very un-shy *Spy* magazine.

The October issue of *Spy* lists the 100 "most annoying, alarming, and appalling people, places, and things." Number 55 was "the Garrison Keillor industry." (Sort of like "the Mickey Mouse industry.") Among the faults that make *Spy* editors gag are "his exaltation of the killing cuteness and gemütlichkeit of life in these rural United States."

Hey... maybe Gary should write campaign commercials for George Bush.

— Meg Spilleth

Classic Cafe & Bar Presents
MONDAY NIGHT MADNESS

\$1 DOLLAR FEVER FROM 8:00PM TO CLOSE

Put down the books! Stop writing papers!
 It's One For All and All for \$1.00. That's right!
 Dollar Drinks of Your Choice
 \$1.50 Long Island Ice Tea
NO COVER

the Classic
 CAFE & BAR

Classic Motor Co.
 Fine Food & Spirits
 4700 Excelsior Blvd.
 St. Louis Park
 927-5666



GRADUATION REMINDER

Students planning to attend Fall Commencement should pay the graduation fee by Friday, Oct. 14, in 150 Williamson Hall.

For information, call 625-5333

NEW VISION ON CAMPUS
 Come and talk with CARP on:


- Spiritual Renewal
- New Moral Commitment
- Positive Solutions for Global Injustices

Wed. Oct. 12 Video Presentation
 12:15-1:45 **FREE**
 CMU-Room 306 Refreshments



Collegiate Association for Research of the Principle

st. paul student center presents
FRED SMALL new folk collective
 Friday, October 14, 8 p.m.
 St. Paul Student Center Theater



Fred Small gave up a successful career as an attorney in 1980 to write and sing songs that make people think. Tackling topics like racism, greed, and militarism, Small has been compared with Woody Guthrie, Pete Seeger and Tom Paxton.

Reserved Seating \$7 advance, \$8 door
 \$1 off for U of M students with ID and fee statement.
 Tickets on sale at St. Paul Student Center.

WE'VE GOT THE JOB FOR YOU.

Peace Corps is an exhilarating two year experience that lasts a lifetime.

Work at a professional level that ordinarily could take years to achieve. Develop skills important for career growth while helping to make a difference in other people's lives.

Reps on campus: Oct. 11 - 13
 Coffman & Willey 9 - 4 St. Paul Student Ctr. 9 - 3

Film showings:

| | | |
|---------|---|-------------------|
| Oct. 11 | Blegen/115 | 3:15 p.m. |
| Oct. 12 | St. Paul Student Ctr./207 Blegen/105 | noon 3:15 p.m. |
| Oct. 13 | St. Paul Student Ctr./207 Blegen/210 | 3 p.m. 7 p.m. |

Watch for announcements of additional showings.

Info interviews:

| | |
|-------|---------|
| CLA | Oct. 25 |
| Mgmt. | 26 |
| Educ. | 27 |
| IT | 28 |

sign up in respective placement office

Peace Corps.
 The toughest job you'll ever love.

Beautify and Energize Yourself



Services:

- Aromatherapy shampoo, haircut, and style \$5.00
- Permanent wave starts at \$14.00
- Color/tint \$9.00
- Therapeutic aromatherapy facial \$9.00
- Manicure or pedicure \$4.00

All services performed by supervised students. Call 331-1400; appointments not always necessary.

Maximum Convenience:

- Free parking behind Institute/bike racks
- Located on bus lines

Become a Student at the Horst Education Center for Cosmetology

- **Cosmetology Course** (1,550 hours)
- **Skin Esthetics Course** (700 hours)
- **Nail Esthetics Course** (350 hours)

Financial aid and loan counseling available. Call (612) 378-7400 for more information.

The Education Center uses Aveda Aromatherapy
AVEDA
 products made with pure flower and plant essences.

horst education center
 FOR COSMETOLOGY

Horst Institute, 400 Central Avenue S.E., Minneapolis
 Corner of 4th Street and Central Avenue

St. Paul Computing Services OPEN HOUSE

**90 Coffey Hall
October 13 and 14
10:30am -4:00pm**

- Electronic Mail (BITNET and other networks)
- Statistical Computing
- Data Base Management and Access
- Micro to Mainframe Connection
- Public Microlab Internet Communications/Servers
- Graphics
- Videos and Tours
- Featured Demonstrations:
 - Agricultural Experiment Station
 - College of Agriculture (Project Harvest)
 - Dairy Herd Improvement Association (DHIA)
 - LUMINA and CD ROM
 - Outdoor Store
 - Soil Testing Laboratory

• REFRESHMENTS

RELIGIOUS EXPERIENCE & GOD'S EXISTENCE

A Lecture by
Keith Yandell
Professor of Philosophy &
South Asian Studies
University of Wisconsin, Madison

Thursday, 2:15
351 Coffman Union

Sponsored by
The MacLaurin Institute, The Department of Philosophy, The
Graduate Student Christian Fellowship, With the Support of The
Minnesota Students Association.

GRADUATE STUDENT WINE & CHEESE

Grads: Take a break
from your hectic
schedules for a relaxing,
fireside get-together
with fellow students.

THURSDAY, OCTOBER 13
4:15 p.m.



B'nai B'rith Hillel Foundation
1521 University Ave. S.E.
379-4026



Candidates spar over trade issues


(AP) — Michael Dukakis and George Bush sparred at a distance Tuesday over trade issues in a prelude to this week's prime-time debate. The Democrat vowed to stand up for American companies and jobs, while the vice president charged that his rival was guilty of "protectionist demagoguery."

"My opponent needs an issue, and he's willing to scare people to find it," Bush said of Dukakis' recent emphasis on a need to regain American dominance in world economic competition.

Dukakis counterpunched a few hours later as he left Boston for the West Coast. "I'm for more trade, not less trade. I want to export American products, not American jobs," he said.

Dukakis also took a fresh swipe at the Republican vice presidential candidate as new polls indicated Bush's ticketmate is draining support from the GOP. Said Dukakis: "Dan Quayle asks us to believe that if he ever had to fill in for George Bush, America could get by on a right wing and a prayer."

Bush defended his pick for vice president, saying Quayle had helped draft legislation that created jobs for the poor.



Today — October 12
**KATHAK DANCE
OF INDIA**
Performance by
PANDIT VIJAI SHANKAR
NOON FREE
Coffman Union Theater
Brought to you by CMU Performing Arts

LOWER YOUR CHOLESTEROL VOLUNTEERS NEEDED FOR STUDY

U Staff and Employees with high cholesterol. New study through the Dept. of Family Practice provides FREE diet counseling, cholesterol level checks and treatment with Niacin, a safe and effective way to lower your cholesterol. Seeking healthy subjects ages 20-70, preferably no meds.

CALL 627-4928 FOR DETAILS

FREE SCREENING TONIGHT!

At Wiley Hall

Room 125 On the West Bank

Wednesday Night, October 12

Movie Starts at 8:00 P.M.

Doors Open at 7:30 P.M.



SEATING LIMITED

Seats on a First Come, First Serve Basis Only.

Sponsored by the University of Minnesota Advertising Club

UNLIMITED TOPPINGS ONE PRICE



Combine Any Number of Toppings on a Large
Pizza for Only \$9.95 with the Coupon Below

ONLY \$9.95

Large Pizza with any
Toppings

Redeem this coupon and
get a 16" pizza covered with
your choice of toppings for
\$9.95. No double toppings.

Offer expires 12/3/88



Valid at participating stores only. Not valid with any other
offer. Prices may vary. Customer pays applicable sales
tax. Limited delivery area. Our drivers carry less than
\$20.00. ©1988 Domino's Pizza, Inc.

Call Us:

331-3030

1822 Como Ave. SE

339-3030

2211 East Franklin

644-3030

1231 Pierce Butler RT.

Open for Lunch

**DOMINO'S
PIZZA
DELIVERS**

hot & fresh!

ODB
Official Daily Bulletin

Vol. 90 October 12, 1988 No. 16
Important information for students, faculty, and staff is disseminated through the Official Daily Bulletin; you are encouraged to read it regularly to seek items that may affect you.

No notices today.

To be included, notices must be sent to Official Daily Bulletin, 6 Morrill Hall—not to the Daily—two working days prior to publication.

Data

What's Doing

Items for WHAT'S DOING must be submitted by 10 a.m. two working days prior to publication. Notices are printed free of charge at the discretion of the Daily, 625-6666. Forms may be obtained at 10 Murphy Hall.

MEETINGS — PUBLIC BUSINESS

Inter-Varsity Christian Fellowship meeting, 3:15 p.m., CMU 351-52. Commuter large group. All welcome.

Amnesty International meeting, 12:15 p.m., CMU 354.

Community Service informational meeting, 4 p.m., CMU 306. Learn about community service opportunities available to you.

LECTURES — SEMINARS

Molecular Cloning and Expression of Fish Viral Genes, Jo-Ann Leong, 10:15 a.m., Hodson 490.

The Advanced Glaucoma Intervention Study seminar, "Children's Culture and Literature in Norway," Ase Enerstvedt, 9:15 a.m., Walter 109.

Anishinabe Akeeng White Earth Indian Reservation, John Morris and Marvin Manypenny, 7 p.m., Law Center 30.

Citizen Education Seminar Series, "Hubert Humphrey's Presidential Campaign Speaking: A Retrospective to 1968," Analyzing public process, policy and politics, 8 p.m., Humphrey Center 205.

"Peleo-climate in South Asia with Special Attention to Kashmir," Dr. D.P. Agrawal, noon, Folwell 206.

MSI Seminar: Bivariate B-Spline Finite Element Method, Jiachang Sun, 1:15 p.m., MN Supercomputer Institute 3125.

Career Planning workshop, 12:15 p.m., Eddy 402. Choosing a direction: Step One — finding out about myself (3 sessions). Strong-Campbell Interest Inventory given before workshop.

"Boiling and Condensation—the Odd Couple in Heat Transfer Education," Ernst R.G. Eckert, 3:15 p.m., ME 108.

ARTS — MEDIA

KUOM 770 AM "Talking Sense," Improvisational Theatre! Dudley Riggs and Kent Neely, 1:30 p.m.; Alberto Ginastera's "Estancia," Antonio Soler's "Fandango" and Joaquin Rodrigo's "Concierto de Aranjuez," 3:30 p.m.

Information — ANNOUNCEMENTS

IRSEP Exchange to Iceland informational meeting, noon, CMU 353. Presentation, question/answer session, application info.

"Living with Grief and Loss," 7:30 p.m., Normandale Community College, Anderson Room. For information, call 896-4844.

Supporters of Memorial Stadium turn out early
Stadium from 1

what Memorial Stadium Committee chairman Bill Semans calls a "terrible mistake."

And students at the rally seemed to agree. Protesters of the plans toted signs that read, "Dome Ball Sucks," "Hell No — It Won't Go," and "Don't Make Memorial Stadium a Memory." A large banner hung from the stadium's wrought-iron fence that read "Don't Tear Me Down."

Semans and others at the rally said they believe the University, in the wake of a growing fervor over the impending destruction of the stadium, had rushed the construction process to avoid allowing students and alumni a chance to mobilize against the move. University officials have denied the allegation.

The University News Service announced approval of Sheehy's bid for the project, which came in \$540,000 over University estimates, at 5:20 p.m. Monday, 14 hours before construction was slated to begin.

"(The late announcement of construction) just shows how venal the other side is," Semans said. "They realize that there was a coming together of the press, the students and the alumni, and they got scared and are trying to push this thing through."

"I think that now the student body realizes the importance of Memorial Stadium in terms of the overall University community," he said. "While the regents think this is a done deal, the students and the faculty better have a say in this. This isn't just 12 people sitting in a room who can make the decision to tear down a football stadium, a war memorial and a historic campus landmark all at the same time."

Humphrey Institute graduate student Nona Narvaez, chairwoman of the Ad Hoc Committee for Memorial Stadium, said she sold 200 "Save Memorial Stadium" buttons at the rally.

"There is absolutely no opposition to (saving the stadium)," she said.

Other protests are scheduled

for 7 a.m. every day this week, and organizers say they expect much larger crowds because few people knew that construction was slated to begin Tuesday. Several University Marching Band members said they would bring their instruments to the protests.

"We really want to save Memorial Stadium," said fourth-year mellophone player Andy Maas. "We didn't think there was a chance for a while, but I've always wanted to play here. Now that Memorial Stadium is getting so much (media) attention, now there's a chance."

Band alumnus Beth Christianson, who played flute and piccolo from 1980 to 1983, said the Metrodome ruins the collegiate spirit and feeling that once thrived in Memorial Stadium.

"It's so different now in the dome," she said. "There's really no life. When games were at Memorial Stadium, we'd march down University Avenue. And when we'd march into the tunnel, we'd just go crazy."

"There would be a shaft of light at the end of the tunnel and we'd come out march in a quick cadence and then everybody in the stands would go nuts," she said. "That was college football. In the dome, you feel almost manipulated. Everything is climate controlled. It's like you're a rat in a cage."

Another protester, Institute of Technology student Jim Graham, agreed that the dome didn't provide a collegiate atmosphere, adding that he attended one game at the dome and refused to return.

"You walk around the campus now, and half the people here have never even seen a game at Memorial Stadium," he said. "They don't know what it was like. Memorial Stadium was a focal point on campus, and once it's gone, it's gone."

Horizons
A Weekly Series Giving You an Opportunity to Meet with Faculty and Staff

TODAY - October 12, Wednesday
COPING WITH STRESS and GROWING with COLLEGE LIFE.
12:15pm CMU 351

Prof. Ludwig Spolyar, Consulting Psychologist, University Counseling Services.

ISSUES and IDEAS

Lectures Free
Sign Language Interpreter available upon request call Voice/TTY 624-4037.
Lemonade and cookies available

Meyer's Foods

1412 5th Street SE
Mpls., MN 55414
DINKYTOWN, USA
378-0491

Pepsi, Diet Pepsi, & Mountain Dew
12 Pack
\$3.39
2 Liter Bottles
\$1.29
Expires Oct 22nd

CAMPUS
NOW SHOWING!
Tom Hanks big
A wonderful new comedy
Nightly 7:30-9:30 • Sunday at 1:30-3:30-5:30-7:30-9:30 • PG

WORLDS OF PERFORMANCE
focus on INDIAN DANCE & MUSIC
LECTURE DEMONSTRATION
WEDNESDAY
OCTOBER 12TH
7:30 - 9:30 PM
ST PAUL STUDENT CENTER U OF M

BHARATANATYAM DANCE With Krishnaveni Lakshmanan star performer of dance-dramas. 8:30 p.m.
 KATHAK DANCE with internationally acclaimed dancer Pandit Vijai Shankar. 7:30 p.m.
Sponsored by Performing Arts, Dance program of Theatre Dept., IndoAmerican Club and Nrityajyoti Dance Company

Bharata Natyam - Classical Indian Dance
KRISHNAVENI LAKSHMANAN

Thursday October 13th, 7:30pm
Wiley Hall, Rm 125 West Bank Auditorium
\$8 each, \$5 students
for info call 894-9785

BME labstore
retail sales of:
• glassware
• chemicals
• lab apparatus
646-5339
Bio-Medical Engineering
2459 University Ave.
St. Paul

GRADUATE STUDENTS
Be involved in the decision making
COUNCIL OF GRADUATE STUDENTS GENERAL ASSEMBLY MEETING
Wed., Oct. 12 3:15pm 101 Fraser (East Bank)

Elections

| | | |
|--|--------------------------------|--|
| University Senate (4) | Policy and Review Councils | College of Liberal Arts (CLA) |
| University-wide Committees | Education and Psychology (3) | (open to grad students in CLA) |
| Graduate School Grievance Committee (1) | Health Sciences (15) | Appeals Committee on Academic Freedom and Responsibility (2) |
| CLA International Studies Advisory Committee (2) | Language, Literature, Arts (7) | Assembly (2) |
| University Legal Services Board of Directors (1) | Plant and Animal Sciences (6) | Career Development Committee (1) |
| | Social Sciences (8) | Composition and Communications Advisory Board (3) |
| | | Consultative Committee (2) |
| | | Council on Curriculum, Instruction and Advising (2) |
| | | Distinguished Teaching Award Committee (1) |
| | | Faculty Awards Committee (1) |

Continuing COGS Issues

| | |
|------------------------------|------------------|
| Taxation of Tuition Stipends | Health Insurance |
| Libraries | Child Care |
| | Governance |

Issues/Concerns 1988-9
Student Regent Position

Contact COGS 418 Johnston 626-1612 for additional information

THE EARLY BIRD
PREPARE FOR
DEC. 3 LSAT
CLASSES STARTING OCT 12 OCT 18
NOV 2
KAPLAN
STANLEY H. KAPLAN EDUCATIONAL CENTER LTD.
CALL 641-1200

Lebedoff: Saving the stadium will hinge on renovation costs

Regents from 1

different location, Lebedoff said. "And I want accurate information," he said.

When the regents considered signing a 27-year lease at the Metrodome in 1984, physical planning presented estimates of Memorial Stadium refurbishment costs to the board. The estimates, intended to determine how much it would cost to return the Gophers to the stadium, included many costs not related to football.

Several regents were surprised by the announcement that construction would begin Tuesday despite \$540,000 in cost overruns on the bid for the initial phase of the project.

Both administrators and regents agree that board approval is needed for cost overruns of

\$100,000 or more. But administrators contend the policy applies only to the total project cost; many regents say they feel it is applicable at several stages throughout the construction process.

Regent Wally Hilke, who cast the lone dissenting vote in 1984 when the Gophers signed the long-term contract to play in the Metrodome, said he was "very pleased" by Lebedoff's request.

"When you're before the firing line, you realize how important some things are," he said. "A lot of people around the state, including regents, are realizing that before we ruin a structure that would cost \$30 or \$40 million to rebuild, we better look long and hard."

Minnesota Student Association President John Bradford also was

pleased by Lebedoff's decision.

"I think this is an issue that is important enough for (the regents) to put off, because there is enough public as well as student support for saving the stadium," he said.

Jim Turman, director of recreational sports, said a request to halt construction for a few days was "reasonable."

Hilke added that it is possible to move the pool and refurbish the stadium. Although additional funding would be needed, Hilke said the interests of students and taxpayers should come first.

"In a way, demolishing Memorial Stadium will be like driving a stake through the heart of a lot of people," he said.

Panel urges supervision, early treatment for rapists

Violence from 5

to prosecute marital rape.

• Using DNA "fingerprinting" and other new technologies to increase control over sex offenders.

The report emphasizes improved treatment, particularly for juveniles, who often go on to become adult rapists.

The state's new comprehensive

sive approach also must take account of family violence so adolescents are prevented from becoming offenders in the first place, according to Sen. Allan Spear (DFL-Minneapolis).

"Many of them were abused as children, so we have to look at prevention programs that are going to pay off 20 to 25 years down the road," he said.

MINNESOTA DAILY

9 am to 6 pm Today through Fri., Oct. 14
Great Hall-Coffman Union



MOVIE POSTER SALE

Thousands of titles, both classic and current. Publicity stills, lobbycards, & movie memorabilia. sponsored by U FILM SOCIETY

GIVE US A SHOT & WE'LL GIVE YOU A SHOT. WEDNESDAY

\$2.00 cover allows you to purchase ANY BEER ALL NIGHT FOR ONE BUCK!

or Show college I.D. and get in for \$1.00

GATSBY'S WIN A CHANCE TO HAVE YOUR WINTER CLOTHING PAID FOR!

VCR

Great Films Not On Video
Pasolini's "The Gospel According to St. Matthew"
8 p.m. West Bank Union Auditorium
Sponsored by CMU Films.
\$1.50 students; \$3 others.
Discussion after film:
Comparison/contrast with Scorsese's "Last Temptation of Christ"

Video Documentary on Director Pier Pasolini - Free
"Whoever Tells the Truth Shall Die"
Noon in the CMU WHOLE - see it before the evening's film.



CMU FILM



Levi's Jeans Reg. \$24.99-\$34.99 **15% OFF**

Turtlenecks Reg. \$7.99 **2/\$10.00**

Used Wool Skirts-Great Selection **\$3.50 & UP**

Used Flannel Shirts-Perfect for Fall and Winter **2/\$4.00**

Swiss Long Johns Reg. \$6.99 **\$5.99**

Swedish 3 Button Shirts Reg. \$7.99 **NOW \$4.99**

Wool Berets Reg. \$5.49 **\$3.99**

RAGSTOCK

New Warehouse 830 N. 7th Oakdale & 8th Ave. 333-8520

Bloomington 8913 Penn Ave. S. 881-6411

Warehouse 909 2nd St. S. Near Metrodome 333-8003

Uptown 1433 W. Lake St. 823-6690

Dinkytown 315 14th Ave. S.E. 331-6064

Store Hours: CHECK EACH STORE FOR INDIVIDUAL HOURS

Prices Good Thru: Oct. 12th

"A DIFFERENT KIND OF CLOTHING STORE"



Big plan on campus.

Why do more University staff members and employees in the Twin Cities choose Group Health as their HMO? Because we offer quality health care and preventive medicine.

For example, Group Health started the first Preterm Birth Program in Minnesota. Today, our rate of premature births is nearly 50% lower than the state average.

Another example of our emphasis on preventive medicine is our extensive mammography program. This year we're giving mammograms to over 18,000 women because early detection may be the best defense against breast cancer. As a result, the percentage of our female

members over age 40 receiving mammograms in compliance with American Cancer Society guidelines is more than three times the national average.

And Group Health, working with University researchers, was the first to do a 10 year study on the effectiveness of dental sealants. The results were an impressive reduction in tooth decay.

We're conveniently located at over 40 medical centers throughout the Twin Cities near your home or work. Join us now during open enrollment. For more information, call 623-1919. For more information about our plan for University retirees, call 623-8600.

**GROUP
HEALTH
INC.**

Quality health care for life™

Friends! Gophers! Football fans! Rally 'round Memorial Stadium!

By Todd Cornelius

Dear students:
It's not too late to save Memorial Stadium. It's up to you to save the World War I memorial that University students funded in 1922. It's up to you to get off your duffs and not let big business take away what is rightfully yours. It's up to you to stop the faceless bureaucrats from destroying a dream.

The destruction of Memorial Stadium may be imminent, unless you act now. Without quick action, the Gophers will be forever wed to the Metrodome, according to regent Wally Hilke.

Grab a pencil and paper and write the Board of Regents, 220 Morrill Hall. Better yet, pick up the phone and call 625-6300 today, because Thursday the regents will be at the Kirby Student Center in Duluth. Sprinkles won't make an impact. A hurricane will.

This morning, and on Thursday and Friday at 7 a.m., Memorial Stadium supporters will be rallying near the open end of the stadium. If you have an hour (or even five minutes) to spare, and if you want football to return to the U of M campus, bring yourself and 10 others. The stadium was built by U students to honor the Minnesotans that were killed in World War I. Let it be saved by students.

In 1922, every time \$25,000 was raised by the students, they shot off a cannon and shouted, "BOOM-BOOM Stadium!" The students exceeded their goal of \$500,000, and Memorial Stadium was built in 1924.

How dare they forget.

Last Friday University officials approved a bid



Illustration /Greg Nesbitt

difficult to understand why so many people favor a return to Memorial Stadium, although the Gopher football team has a lease to play in the Metrodome until the year 2009. Those who want Gopher football to remain at the dome have the money. We need numbers.

Who is college football for, anyway? Students or downtown businessmen? The football team represents the University. Dammit, the Gopher football team is ours, it belongs to the students — not the stuffed shirts downtown who want to entertain clients in their glass Metrodome booths. Do they really give a crap about football? No, they care more about drinking martinis and keeping their \$1,500 suits from getting wrinkled.

In 1982 the Gopher football team moved to the dome for a three-year "experiment." Then, in 1984, the Gophers committed to a 27-year lease at the dome. Amidst the hoopla, the students were had by a skinny wizard named Lou Holtz. So slick and fast was the sham that barely anybody flinched at the move.

The Daily's Memorial Stadium series woke me up. Sure, I was always against the dome; it sucks. Now, I've seen some price estimates to renovate Memorial Stadium, and have compared them with the estimates former Men's Intercollegiate Athletics Director Paul Giel gave The Daily.

In 1981 Giel estimated the short-term renovation cost of Memorial Stadium for football at \$13 million to \$15 million. Three years later the University's physical planning report estimated the short-term renovation cost at \$3.6 million.

The estimated cost for the recreational sports center and the planned construction of an Olympic-size swimming pool on the Memorial Stadium site is \$20.7 million.

Saturday afternoon, when the Gophers play Indiana at Bloomington, Ind., go to Memorial Stadium. Bring your radio, a Frisbee, a football and your thermos. If we can't watch a game at Memorial Stadium, maybe we can at least listen to one.

Most of you haven't witnessed a football game at Memorial Stadium. I have. I've basked under the warm autumn sun at Memorial Stadium. I've shivered in the brisk northwest winds. I've heard the band booming and echoing through fraternity row as I walked with my dad to the stadium, the leaves crunching beneath our feet.

They don't have to be just memories. They can become a reality again — for you.

For the sake of Bronko Nagurski. For the sake of the men and women of Minnesota who served their country in World War I. For pete's sake. For your sake. Let's not give up.

Todd Cornelius is The Daily's sports editor.

REC SPORTS SPOTLIGHT



Collin Moriarty, 20, a civil engineering major from Albert Lea, scored an incredible two-thirds of his team's points as the PTPers rolled to a 15-5, 15-8 win in intramural three-on-three basketball. Moriarty scored 20 of the PTPers 30 total points and also played a major part in his football team's 24-8 win. He caught two passes, intercepted another and collected two sacks to help the Beer Dorks win.



Amy Elverum, 22, a park and recreation major from Fargo, N.D., is a two-year veteran of the undefeated and defending national champion women's rugby club. Elverum, who plays second row, will lead the Gophers into the Midwest Championships this weekend in Madison, Wis.



Mr. Football, an ageless student working on his Ph.D. in B.S., missed last week's gridiron contests due to a suspension for illegal pine tar usage. The Fer denied any wrongdoing and said, "I'm pretty unclad over the whole thing. I thought it would make my hairline stop receding."



Bob Moen, 21, a school of management senior from Bloomington, has been associated with rec sports since his freshman year. He was an official for more than a year and also plays broomball, football and softball. He plays center for the intramural team, the Wivenhoe Warriors, but has never won a championship T-shirt.

Editor's note: The "Rec Sports Spotlight" features University recreational sports participants who have done something spectacular, unusual, unspectacular or just plain embarrassing. Any University student, male or female, who participates in intramurals, club sports or other related activities is eligible. Submit names, a phone number and any other available information to: Minnesota Daily sports staff, 10 Murphy Hall, 206 Church Street S.E., Minneapolis, MN, 55455.

Timeout

for construction of a swimming pool in the open end of Memorial Stadium. Several members of the University Board of Regents said they were not aware of the approval. Apparently the University officials are starting to panic. They are acting hastily. They do not want more students, alumni or Gopher football fans to learn the truth of the situation and attempt to stop this thievery.

Tuesday morning a handful of protesters, including St. Paul Pioneer Press Dispatch columnist Nick Coleman, gathered at the Memorial Stadium gates, just outside Cooke Hall. They sang the rouser. It was enough for me to develop a lump in my throat. I had to fight back tears.

But Tuesday's gathering was not large enough. It was not even close. We need hundreds more. Or thousands.

As you read this letter, people have already gathered at Memorial Stadium. They need your support. We must show the Board of Regents and everyone else that we care. And we don't have much time. It's not enough just to write letters, although that will help too. We must rally *en masse*. We must gather around Memorial Stadium. Now.

Any day now — perhaps even today — the wrecking ball will begin the destruction of Memorial Stadium and 58 years of tradition will be lost forever.

In a Minnesota Student Association poll conducted Oct. 7-8, 97 percent of the respondents said they wanted football back on campus. It's not

North Stars trade Lawton

Bloomington, Minn. (AP) — Brian Lawton, the No. 1 draft choice overall in the 1983 NHL draft, and two other players were traded Tuesday from the Minnesota North Stars to the New York Rangers in exchange for four players and a draft choice, a North Stars spokesman said.

The North Stars traded Lawton, a center who had been sent to the minor leagues before the start of the season, as well as left wing Igor Liba and the rights to

Rick Bennett, a sophomore at Providence College who was taken third in the 1986 draft.

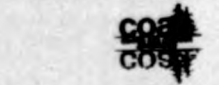
The Rangers traded defenseman Paul Jerrard and Mark Tinordy and the rights to center Mike Sullivan, a junior at Boston College, and right wing Brett Barnett, a sophomore at Lake Superior State.

Minnesota also will receive the Rangers' third-round choice in the 1989 draft.

Fall 1988 Mini Courses and Trips

| | | |
|---------------------------------|-----------------|--------|
| Bike Day Trips | Oct. 23, Nov. 6 | \$100 |
| Outdoor Photography | Oct. 22 | \$300 |
| International Student Overnight | Oct. 22 & 23 | \$360 |
| Bike Touring Weekend | Oct. 29 & 30 | \$400 |
| Horseback Riding | Nov. 5 | \$350 |
| Caving-Mystery Caves | Nov. 12 | \$200 |
| Back packing in Missouri | Dec. 11-17 | \$2300 |

Sponsored by: Center For Outdoor Adventures



Sign up in person at the Outdoor Store 625-8790 for more info

ATTENTION ALL INTERNATIONAL STUDENTS

TAX FREE INVESTMENT OPPORTUNITIES FOR INTERNATIONAL STUDENTS

Featuring: **Bruce Pomper**
Regional Vice President
The Kemper Group

WHEN: Thursday, October 13, 1988, 11:30-12:30 p.m.

Lunch provided
RSVP: 541-8404 or 625-6119

WHERE: Coffman Union, Presidents Room, Rm. 320

Sponsored by: Minnesota International Student Association
The Kemper Group
Offerman and Company, Inc.

BEAT THE CLOCK WITH GUEST TO BE ANNOUNCED

Friday, Oct. 14
Picked by Sara Jordan
of WMCN Radio.

Doors open at 8:30 p.m.
\$2.00 with U of M student I.D.
\$3.00 all others.
Must be at least 18 years of age
or have a valid student I.D.
The Whole is a program of
Coffman Union.
For more information call 624-8638.

whole
UNDERGROUND AT
The Whole is a non-alcoholic music club.



THE MINNESOTA DAILY CLASSIFIED

627-4140
Classifieds Display: 627-4080

St. Paul Office: Student Center Ticket Office
(Across from Information) Hours 10am - 3pm
Deadline at St. Paul for next day: 2:45pm

Minneapolis Office: Coffman Union Ticket Office
(Across from Information) Hours 9am - 3pm
Deadline at Coffman Union for next day: 2:00pm

Main Office: Room 208, 720 Washington Ave SE
Hours 8:30am - 5pm
Deadline at Main Office for next day: 3:45pm

Announcements

005 Personals

Congratulations TED & CHRIS
1988 Homecoming King & Queen
YOU LOOK MAHAVALOUS!
LUV, YOUR ROYALTY COURT

THANKS Homecoming Exec!
1988 Homecoming Was The Best
WE LOVE YOU ALL!
HOMECOMING ROYALTY

HAPPY BIRTHDAY BUTTHEAD
Love, Fred Smith

Mystery, Intrigue, Romance
Prison inmate seeks correspondence
w/female 18-26 to share thoughts &
ideas. Write: W. Pratley Box 55
Stillwater, MN 55082

010 Fraternities and Sororities

Alpha Kappa Psi Pledges
Congratulations on making the right
choice. I'm looking forward to work-
ing with you all this quarter let's
make it a fun one!

Great job with Homecoming
Love, Your sisters at SDT

ATO Little Sister
Meeting
Tonight 5pm

PHI SIG RUSH
...the chance of a lifetime!!!

Rush info and Upcoming Events:
call Greg or Paul at 331-3864

What's Nu??
Sigma Nu Little Sisters
Meeting for all Actives
Wednesday 7:30

It started last spring
With the roses and song
There was absolutely no doubt
We would all get along
The bid was accepted
The houses we're together
Were destined to be
The best houses ever!
Construction was awesome
Everyone gave it their all
Every minute was worth it
Because we came out walking
tall!
After all our hard effort
There was simply no doubt
Pi Kappa Alpha, Gamma Phi
Would make all other houses
pout!
When Gamma Phi and Pike
Were announced #1
We jammed through the night
And were sad when it was done
After all is said and done
The bonds we all share
Give us a sense of pride
No one can ever tear!
Gamma Phi Beta
and Pi Kappa Alpha
will FOREVER be #1!

Congrats to our overalls and
Thanks for the great job...

Stephanie Thomas
Chris Martinson
Deb Rocheford
Jim Eischens
Lisa Rivers
Chad Pointer
Elizabeth Warner
Erich Bertsch
Anne Koenig
Terri Liesen
Mike Holland

P.S. And thanks to all the
Other Gamma Phis and
Pikes who put in a
helping hand!

Delta Theta Sigma and
FarmHouse thanks all of
our friends who helped
with our float

DKE
JJJ
WE LOVE YOU!!

DKE-SDT Cheer 88!
Brad King, Kamala Jaci, Zieps,
Konehead, Edgardo, Jenele, Holly,
Pam-Face it We're AWESOME!
With love-Jeff & Chewy-From Hell

LADIES NIGHT AT AGR
Wed., Oct 12
9:00-10:30pm
St. Paul Campus
BE THERE

Questions, call 645-3591 - Ann

TODAY is the last day to
apply for the Camus Carni
Executive Committee! Apps
available in the SODC office
340 Coffman Union
GET IN THERE AND APPLY!

TO JENSINE FROST OF AXO
The men of Beta Theta Pi
Love you and thank you for
Your help During Homecoming

To the ladies of
GAMMA PHI BETA
Homecoming '88 was the best and
We will all remember
The great times of Homecoming
You're the greatest girls around
LOVE,
The men of
PI KAPPA ALPHA

LOWER YOUR CHOLESTEROL
VOLUNTEERS NEEDED FOR STUDY
U Staff and Employees with high cholesterol.
New study through the Dept. of Family Practice
provides FREE diet counseling, cholesterol level
checks and treatment with Niacin, a safe and
effective way to LOWER YOUR CHOLESTEROL.
Seeking healthy subjects ages 20-70, preferably
no meds.
CALL 627-4928 FOR DETAILS



Shhhhhhhhh!
It's Classified
627-4140

To The Amazing Ladies of AOTT:
Now that all is said and
Homecoming's done
A formal thanks for so much
Fun,
Hardware is nice and some will
Boast.
But no one has more reasons to
Drink a toast.
We raided, pumped, pafiglianod
And zoomed
And throughout all of this the
Radio boomed
Kickoff with Katie in her
Wedding tunic
And who can forget the bloated
Eunich!
So we say see ya soon, but not
Good-bye
To the best of them all, AOTT.

Love,
The Sammys

To The **Headbangers** of Alpha Phi:
We had a blast but it went too fast.
WE WERE GREAT IN '88
#1 AC/DC, KE and Alpha Phi #1
p.s. Let's do it again sometime!

015 Homecoming

Amy Salita
Your the greatest
co-director ever!!!
Love ya, Andy

SEND A MESSAGE
TO A FRIEND IN
THE MINNESOTA DAILY!
CALL 627-4140

020 Announcements

NURSING STUDENTS
We need 3rd & 4th yr nursing
stdnts at U of M Bethel or St
Catherine's to take part in a
group discussion on nursing
careers. Discussion is in
dwnntn Mpls & lasts approx 2 hrs.
There's a \$50 cash comp for
participating. Please call Mary or
Sue 344-1140.

Services

035 Educational Services
Save your neck!
"Students Guide to Calculus"
*Simple, non-tech. explanation
*All beginning calculus courses.
Williamson Bookstore

SPRING BREAK IN MEXICO FROM \$269.00

| Destination | Departure dates | Air only * | 7 Night Pkg ** |
|-----------------|-----------------|------------|----------------|
| MAZATLAN | Friday | Mar. 17-24 | \$279.00 |
| | Tuesday | Mar. 21-28 | \$279.00 |
| CANCUN | Mar. 17-24 | \$289.00 | \$329.00 |
| ACAPULCO | Mar. 20-27 | \$269.00 | \$425.00 |
| MANZANILLO | Mar. 18-25 | \$379.00 | \$445.00 |
| PUERTO VALLARTA | Mar. 22-29 | \$279.00 | \$590.00 |
| | | | \$489.00 |

* Air Price only-Does not include Mexican departure tax.
**7 Night Pkg includes air/hotel/taxes & tips/transfers.
Does not include Mexican departure tax.
(Wanted — Group Co-ordinators. Earn money for your organization or earn a free trip.)

Call Mark IVP Travel
1-612-497-2707 Local
1-800-221-6606 MN WATTS
1-800-328-8969 US WATTS

065 Insurance
All lines of insurance-lowest rates-
Call 938-6343

070 Typing
Low cost insurance for good drivers
over 21, or 3+ GPA. 559-3030

051 Health Services
ALWAYS PERFECT -WP
7 day wk 871-6489

MIDWEST HEALTH CENTER FOR WOMEN
Caring qualified Professionals
Meeting Your Health Needs
•Low Cost Birth Control
•Morning After Treatment
•Free Pregnancy Testing
•Confidential Abortion Services
•Indecision and Partner Counseling

332-2311

Rape...Sexual Assault...Incest
24-Hour Crisis...626-1300
101 Eddy Hall...625-6512
UM Sexual Violence Program
University Counseling Services

Pregnant? Worried? We'd like to help! U Life Care Center

- FREE PREGNANCY TESTING
- PREGNANCY COUNSELING
- REFERRALS FOR FINANCIAL AID AND LOW-COST PRE-NATAL CARE
- ABORTION ALTERNATIVES
- WALK-IN SERVICE MON-FRI. (Saturday by Appointment)

720 Washington Ave. S.E.
378-1920

PREGNANT? WORRIED? UNCERTAIN? We care about you!

- FREE pregnancy testing
- FREE indentation counseling
- FREE abortion information
- FREE alternatives to abortion
- FREE abortion aftermath counseling

CASSIA CRISIS PREGNANCY CENTER
1101 Univer. Ave. S.E. • 623-8528
Across from Sanford Hall

055 Legal Services

Are you looking for someone to help you through legal matters, including personal injury? Find reliable help from Bruce Gershman, Attorney. Bruce will give you the personal attention you deserve. Bruce's fee for injury is % of the recovery. If there's no recovery, there's no fee. 332-3100, free appt.

IMMIGRATION PROBLEMS?
For help, call Jay Hambridge
Attorney at Law, at 334-5899.

Immigration, Personal Injury
William Latchana, Atty 333-7888

Unplanned Pregnancy? There is another choice Adoption!

The Adoption Option Committee
P.O. Box 24132
Minneapolis, MN 55424
(612) 944-0866
Resources Available

085 Resumes
Professional Resumes 379-3871
QUALITY RESUMES 872-1637
RESUMES affordable & professional. Can meet days or eves & guarantee rapid turnaround...631-8144

095 Wanted
CASH FOR BASEBALL CARDS
I will buy your collection, old or new. Call for more info
Lyle or Eric 623-8157

105 Wedding Needs
Budget wedding photos 645-1370
Wedding Photos Iga 724-4717

ALWAYS OPEN 24 HOURS PAGES TO GO
MACINTOSH. Randy 925-4377

KRISTA LABIE WP 546-4980
Laser printer/math & foreign symbols/resumes/tapes/rush jobs
PRO TYPING SERVICES 699-9476
Roseville Typist LYN 636-6562

SANDRA 339-6677
•PhDs, MAs, Plan Bs, manuscripts
•Thesis consultation and editing
•APA, Campbell, MLA, Turabian...
•High quality/full-time since 1971

Star Office Services 333-2207
708 N I St. #235, Mpls MN 55401
Resumes, Letters, Reports, Etc.
Let us make you look good!

Term paper, Report, Res., Lit., Tape Trans., etc. Prof. WP/Type E. Metro Rush Jobs 774-7686.

Theses Papers Resumes Letters
RUSH JOBS ALICE 560-8905

TYPING FAST & CHEAP
Kay 571-3559 Chris 788-5441

WEBER SERVICES
IBM/Word Proc/Data Entry
Nr St Paul Campus 644-9746

Word process 646-1790 Rhonda
Word Processing 646-7342
1 block form St. Paul campus

W.O.R.D.S.—Word Processing
Resumes, papers, letters, fast
306 15th Av SE. 379-4649

075 Lost and Found

Found: Watch on Campus Sat PM
call if its yours 378-3886

Lost a blue and white contact lens
case with contacts in it 922-0386

Lost blue 3 ring binder on Oct 5
Blegen Hall Reward 824-6847

\$25 reward for lost camera. Left on
route 13 bus on 10/05/88. 644-2469

080 Travel

Share ride to Seattle
Leave 10/17. Call 731-2604.

Vail emp. Send \$3.00/m.o.: J.Olson
P.O.Box 22284 Mpls., MN 55422

Your Worldwide Travel Consultant
Tokyo From \$775
Hong Kong From \$795

Japan Rail Pass is available.
SAKURA AGENCY INC 339-0770
Ask for Keiko or Ritsuko

CAMPUS TRAVEL CENTER
It's not too early to book Thanksgiving, Christmas and Spring Break trips. Don't wait until the last minute! Student travel specialists.

2500 RIVERSIDE AVENUE
MINNEAPOLIS, MN 55454
HOURS: 9-5 MON-FRI, 10-3 SAT
Domestic 338-6705
International 338-5616

Jobs Available

125 Help Wanted

Able-bodied student to do yard
work. \$6 per hour. Prof's home near
Franklin Ave Bridge 724-1769

Activist
Help the homeless and help your-
self. Above average earnings for
part time work. No pressure, re-
laxed environment, ideal for ex
convicts. This is a job that will fit
into your social and academic
schedule. Call Gary 827-2331 or
John 870-1557

Attendant, Sgl. to answer phone and
do Lt Maint at funeral home Alt
nights and wkndy Room and salary
Refs. No Smkg 789-8889 8-5

Auto Detailing
PT pos. for exp. detailer
Auto Buff 378-0767

A very unique sales opport for
individuals interested in human
resource mngmt, seeking someone
full or PT. People who should
consider apply must be sales
oriented and have strong interest in
personel work 374-1178

Baker's Square
210 N Blake Rd
Hopkins

Now hiring cashiers & hostesses
starting pay \$6-7/hr + bonuses. FT
& PT pos avbl w/benefits. EOE
935-0171

BANK TELLER
PT position eves, some Sats S Mpls
Bank Call David 822-8395

Big Profits Daily
wk at home
Process phone orders
874-9118 ext L

BROOKLYN PARK
Focus Homes Inc, foster care pro-
vider has PT hrs av. Work with
individuals who are blind and deaf
must know sign lang 771-5531
Dawn

Campus Club
Food Service Worker M-F
11-2 Call 625-9696.

Campus Rep Positions for Junior &
Senior Accounting majors. Work 2-
3 hr/per week on campus distribut-
ing information for nat'l CPA Re-
view Course. Generous tuition
discounts & Cash incentives for
outgoing, industrious, energetic fu-
ture CPAs. Call Mary 338-1977 M-
F 9am to 4pm.

CARETAKING TEAM needed for
nice clean 16 unit sec bldg in
Seward area close to U PT duties
for rent reduction No mice exp req
perfect for students 926-3247 M-F

Caretaking couple needed on site
for 28 units-200 Dupont S. Includes
apt and salary 823-0983

Cashier/Stockperson: PT. in Lowry
Hill area, \$4.50/hr start. Call Jim or
Gary 871-2500.

CHRISTMAS HELP WANTED
Bakery/packaging PT, flex hrs, day
or eve, start \$4.50/hr. 331-3523

Phone Interviewers
Market research PT. No sales.
Roseville, \$4.75/hour, 631-1977.
Evening shift 5-10. Call 4-9pm.

Market Research Interviewers
If you like variety and talking to
people on the phone, consumer
research interviewing is for you We
need phone interviewers to work 3
or more nights/wk 3-9:30pm and
some wknds during the day Conven-
iently located in dwnntwn Mpls
Paid training and flex scheduling
Call Sue 344-1133

Great PT!
WEEKENDS FREE!
Are you tired of part time jobs with
little or no personal satisfaction,
limited wages and inconvenient
hours? Then help us raise funds for
a well known national charity. We
offer paid training, convenient East
bank U of M location, and a
guaranteed salary and generous
bonuses that will help you earn
between \$100-200/week. Work in a
professional atmosphere with peo-
ple you enjoy, you must be hard-
working, able to communicate well
with others and able to work from
4-9 PM, 3-5 evenings per week. For
interview call Steve or Don after
10AM at 379-2034.

Holiday Project NE MPLS
Customer service oriented individ-
uals needed to work with the public
over the phone, in a fast paced
environment. Good phone etiquette
& the ability to deal w/ pressure are
required. 6-8 wk commitment. PT
hours available. Must be dependa-
ble & have reliable transportation.
Call 339-2220
DOBB'S Temporary Services

School Bus Drivers

ISD 196-Rosemount needs school bus drivers am & pm. Will train starting pay \$8/hr. Apply at: Employment Systems 14445 Diamond Path, Rosemount. Or call 423-9349.

Market Research Interviewers

If you like variety and talking to people on the phone, consumer research interviewing is for you. We need phone interviewers to work 3 or more nights/wk 3-9:30pm and some wkdns during the day. Conveniently located in dntwn Mpls. Paid training and flex scheduling. Call Sue 344-1133.

AAA DANCERS

Earn \$800-1400/mo. Dancing at stag parties one eve/wk. Also, male needed to escort performers to shows. Must be at least 6'4" 230lbs. 633-1361 (h msg.)

Entry Level-\$7.10

Local branch of nat'l firm must fill several FT & PT positions immed. Will train. flex hrs. Internships & scholarships avbl. Call 897-3758. S Mpls: 535-9761 N Mpls 12-5pm.

DO YOU LOVE ITALIAN FOOD? then BRAVO! Italian specialties restaurant needs PT, FT help for pasta and Pizza prep. Call Tony 922-5815 or Apply at 4936 France Ave South.

DRIVERS needed for wheel chair van service. Must be over 21 yrs. know city well, good driving record. Morn. aftn or flex FT. Metro Ride. 800 24th Ave SE 55414

CLOSE TO CAMPUS 331-4200

Earn Holiday Cash NO EXP. NEC. ASSEMBLY/LIGHT PROD. Lifetouch Nat'l School studios has fall season opp. for you to earn extra \$5 by Christmas. We offer: *Good pay/benefits/pd. training *Flex. Hrs/Day & Night shifts

Stop by: Lifetouch Nat'l School Studio 7800 Picture Dr. Bloomington, MN (hwy 494 & 100) or call 835-3400 ext. 249 EOE.

Exp. PT shoe salesperson needed in Calhoun Square, Commission. Call Debby 824-5574.

Factory Temporary FT opening for reliable & hardworking people in our new & technologically advanced plant in the St Paul Midway area. Involves some physical labor. 2 shift operation starting pay - bonuses, presently averaging \$7 per hour apply at Milson Inc. 2286 Capp Road, St Paul, 646-2709 EOE.

Fitness Consultant/Instructor work in a corporate fitness setting. PT. Flex hrs. Twin Cities locations. Exp. in wt training - aerobic class instr. pref.591-6064 after 11:00 am.

Flex hrs day, eve & wkend. telephone interviewers. \$4.75 hr. no selling. sidnt loan prog avbl. near Southdale/bus route TK Associates Edina 926-7886

Foster care person to live-in with 4 mildly retarded adults in Randolph Salary + room Call Judy 460-8208

FREE HAIRCUT & STYLE ANYONE? Int'l Famous hairstylist Yosh Toya friend of Rocco & Horst needs Female models for haircutting class. Hair should be med. to long. No bizarre haircuts. Report to Radisson South Hotel 2:30pm Sat 10/15/88 to Room 201 for pre-screen FREE T-SHIRTS GIVEN TO EACH MODEL. Questions? Call 893-1011

F to babysit in my Stp home. 4pm-4am. M-Th for 3 girls. \$125/wk! Call Roseann 487-2987.

Gymnastic Coaches Private Club looking for Gymnastic coaches. Call 424-3442

Handyman needed for Dnkytwn apt bldg in SE Mpls. Eves 452-7643.

Help wanted immed flex hrs. close to U. 339-9766 ask for Tom L.

Highland Park area group home has PT pos wking w/6 young adult men who are severely handicapped 17 hrs wk \$5.50/hr call Susan or Maureen at 644-7680 for more info

Inventory auditors for the Midway Roseville team. Exc. opportunity for students working nights & wkdns. Some daytime positions. Starting at \$5.25 & earning up to \$6.75 in 1 year. Good potential for advancement. 10-20 hrs/week. Must have personal transportation. 10 key exp. preferred but will train. Call RGIS 835-7858 for interview.

Kitchen, lunch hour & evenings. Mike or Terry: 331-2975

Lab Technician immed FT perm pos Excellent opportunity in small independent analytical testing lab using surface analytical instrumentation BS in Chem. Phys or Chem E req 227-3243

LIQUOR STORE CASHIER & STOCKPERSON 30-40 hrs. eves & Sat. David 522-5412 before 1pm

Live in Male. Light Housekeeping in exchange for room Near U and bus Available 11/1 544-0388

Cleaning person needed FT or PT good pay excel opportunities excel wking cond 874-1531. 870-9796.

Cleaning people PT. Flexible work schedule. work alone. Own trans. Hourly - miles 331-7646

Cleaning. \$6/Hr. Reliable person for housework 1 weekday Aft/wk. Steady work. Prof's home near Franklin Ave Bridge. 724-1769

Clerk/Delivers person dntwn Mpls liquor store. \$4.25/hr. PT 333-5519 Apply in person

Clerk/Stockpersons. flex hrs. Apply in person eves. Greenway Wine & Spirits. 105 W Grant St. Mpls 871-9230

CNA's to \$8.50/hr LPN's to \$14 -/hr. LIFELINES 874-0696.

Comp/aide PT for retired Edina resident. Must have very neat appearance. exc hrly wage. Call between 8am-4pm M-F 944-1360.

Computer Programmer. FT. CSci Degree or candidate. business experience or PC knowledge preferred. call Ceil at 452-1000.

Computer tutor 2hr wk w/bright 11yr old boy. Must like kids - challenge his program. Skills on Apple IIC. Pay by hr. Contact Dr. O'Fallon 624-9800 eve 827-6971.

Coordinator of Geriatric education center. Masters - 1 yr exp. start 11/1/88. Salary 25-30,000. Appl. due Oct 21st. For info call 627-4944. U of M is an equal opportunity educator and employer.

Counselors PT 4-8p & 5-9p M-F wk in Blmtn w/4 low functioning MR 7hr alternate wkend shifts 8-4p or 4-11p wk w/2 mild MR adult women. Both \$7.00/hr Ed or EXP perf Call Tammi 881-5095 aft 2pm

Counselors PT every other wkend all shifts. Nighthift-It hskping group home for MR SW Mpls 924-0438

Counter agent at airport. Need enthusiastic poised and energetic person to work afts. eves and wkdns. Starting salary \$4/hr pkg provided. Call Michele 726-9338

Dental Hygienist Needed for days/eves/wkdns in S Mpls clinic near U of M on Lake St Will consider PT/FT candidates Please call 721-6290 ask for Pat

Soaring demand for pure water. Distributors needed for drinking water systems. Call 729-3278.

Southdale YMCA is seeking energetic and creative people for PT latch key positions in Eden Prairie schools. Hours avail M-F 6:30-9:30am exp in recreation education or childcare helpful. Starting salary \$5.25 per hour. YMCA membership included. Contact Kathy Weiland at 835-2567 EOE & AA

Sr van driver/Eve recep wanted PT driver must have class B license, able to drive handicap equipped veh. Call Program office 933-1833

Star 1. Cellular phone sales position attn: Jim Engel call 868-9090

Tele-marketing PT. Friendly office in downtown Mpls needs 8 fun-loving people to set appointments for Midwest resorts earn up to \$10/hour + cash bonuses and weekly pay. Pleasant phone, voice and good handwriting a must. Choose from 2 shifts 3-9pm or 5-9pm M-F Call Sandy 2:30-7:30pm M-F 375-9500

Nationwide company needs Marketing Representative! Call (312)922-0302 Today!

Needed immed pt eve receptionist. Must be reliable, courteous & indpt worker. Hrs Mon-Thurs 3:30-8:00pm & Sat 7:30am-12:00. Bridget 721-5738

General Ledger Tech PT Branden's, a new division of Dayton Hudson Co is looking for an individual interested in PT position with at least 1 yr business exp to join our team Responsibilities would include charge retrieval, bad check processing, filing and mail distribution We offer competitive salary and a Dayton's discount If interested call 540-8330 EOE

Parking attendants PT 2-6pm M-F. Valet positions wkdns PT Sat & Sun 7-7pm. Cashier ramp \$4.50 to start. Apply in person after 1pm at 81 South 9th St Suite 320 Mpls

PT resid. couns. Alt. weekends & overnights. Inner city adolescent girls group home. Resumes by Oct 14th. 1988 to the City Inc. 1545 E Lake St Mpls MN 55407.

PT support staff person needed at FACS. in a positive wk environment on the WB you'll wk afts M-F affixing labels & preparing lists for fundraising calls. We raise money for progressive non-profit org. Call Terre or Jodi 332-9061

PT 20 hours during M-F. 8-4:30. warehouse. lifting. 545-7979

NEWS FLASH! Are you will to learn and earn? We are willing to train you and pay you. If you are energetic and have great interest in the photo finishing field call 920-6425 or 788-3320 FT & PT pos avl. Flash Foto wants you!

OVERSEAS JOBS. Summer. yr round. Europe. S.Amer., Australia. Asia. All fields. \$900-2000 mo. Sightseeing. Free info. Write IJC. PO Box 52-MN03 Corona Del Mar, CA 92625.

Person for maintenance and cleaning for small museum/library 25-30hrs/wk exp preferred \$6/hr Call Dorina or Jim at 927-6508

POLITICAL ACTIVIST Work for economic and social justice. MN COACT is now hiring concerned ind. to do political outreach, education and fundraising by phone. Hrs. 5:30-9:30 pm M-F \$8/hr Call 379-7571 btwn 10-6pm.

PRESCHOOL TEACHER Unique environment - a.m. hours - S Mpls. Keith at 722-3717.

PUR YOUR MOUTH WHERE YOUR HEART IS! GREENPEACE seeks articulate, environmentally-conscious folks to join our citizens outreach/fundraising staff. Help to stop the slaughter of endangered species and save Mother Earth from nuclear holocaust and toxic poisoning. Earn \$175-250/wk plus benefits. Hours: 2:30-10pm. FT/PT available. Call Jackie or Norm at 874-0320 10am-2pm.

GREENPEACE 2637 NICOLLET AVENUE SOUTH MINNEAPOLIS, MN 55408 (612) 874-0320

300 NEW JOBS! at the new **MARRIOTT MINNETONKA** If you're interested in a hospitality career with terrific opportunities for advancement. Plan to attend our

Employment Center Monday - Friday, October 10th - 14th 9:00 a.m. to 7:00 p.m. Saturday, October 15th 9:00 a.m. to 1:00 p.m. at **Bren Road Business Court** 10550 Bren Road East, Minnetonka, MN 55343 (2 blocks from hotel)

Directions: Bren Road exit from 18, just north of the Crosstown Highway 62, in Opus 2 office park. (on MTC Bus Routes 4N, 12G, & 12J.)

Equal Opportunity Employer M/F/H/V

ACCOUNTS RECEIVABLE CLERK Part time openings for a person with good calculator skills to add invoices, open mail and count cash. Previous cashiering experience required. Hours are Saturday 8am - 4:30pm and 1 or 2 afternoon/evening hours per week.

Call 861-7627 or Apply in person. **BACHMAN'S** General Office Building 6010 Lyndale Ave. Mpls. EOE

Restaurant **JOIN THE NEWEST ARBY'S TEAM!** 20 years of making the difference continues at our newest Arby's located downtown Minneapolis. Positions available for day & evening employment both full & part time.

At Arby's we offer you: **Competitive wages** **Flexible scheduling** **Free uniforms** **Extensive training program** **Exclusive employee discount** **New equipment & modern decor**

Apply in person at our location in the Northstar building, street level, 7th & Marquette next to the Northwest Airlines ticket office or call 339-6848 & ask for Mike.

Priv. Postal clerk FT and PT. salary DOQ. Apply: Calhoun Square mgmt office

PT asst teacher and aides infant-toddler cntr. S Mpls on busline 869-5358

PT Attendant for disabled woman. M. W. Thur. 3pm to 10pm Every other wknd \$388 for 2 weeks. No experience nec. Call 341-4414.

PT. FT EMPLOYMENT FLEXIBLE HOURS Focus Homes Inc. an adult foster care provider. has variety of FT, FT, and Live-in pos. avbl. Pleasant, small home environment. Excellent orientation & in-service training. For info on salary, hrs, and appl process contact Dawn at 771-5531.

PART TIME SECRETARIAL ASSISTANT \$5.75/HR. 50 WPM, word processing exp. required. **MSA** Room 240 CMU 625-9992

Marketing Flexible Hours **IDEAL FOR STUDENTS** Turn extra time into extra money by becoming an important part of the nation's #1 telemarketing firm. Light customer contact work, no cold calling involved. If you are articulate with a good speaking voice, you can earn through salary/incentives: \$5.50 - \$8.50/hr. or more Convenient Mpls. DT location (on bus line). Immediate Openings Avail. **339-5552 Dial America Marketing**

Salespeople needed. ret exp nec. Hiring for morn & aft shifts only. M-Sat. Apply in person: Haute Stuff. 400 14th Ave SE, Dinkytown. Sales pull tabs several PT pos avl several shifts wkdns and wkdns must be at least 21 \$4 hr - tips Call Rick at 522-0673

SANTAS WANTED \$10-30/hr call 755-5881

Sec/recep students study while you work Sat & Sun nights Call 871-2149

Sewing machine operator. sew canvas, web, leather. 15-20 hrs/wk Flex schedule. Call John at 721-1627

DRIVERS SCHOOL BUS Medicine Lake Lines is now training and hiring drivers for am & pm routes. Will work around your schedule. Excellent part-time hours. Located adjacent to St. Paul Campus. **ST. PAUL 647-9290 GOLDEN VALLEY 545-9417**

Mechanical Engineering Student PT small hware manuf co. seeks 2nd or 3rd yr stud. w/gd mechanical/machine knowledge for drafting & other office duties. 646-6771. Model/receptionist PT M.Th.Sat Rush's Bridal 927 Nicollet Mall.

Models/Actors Immed need for models & actors for current & future print work commercials & fashion shows. For more info 291-0058.

Target MIDWAY is now accepting applications for the following positions: **DAYTIME CASHIERS** **SALES FLOOR (DAYS, NIGHTS, WEEKENDS)** **NIGHT & WEEKEND CASHIERS** **OVERNIGHT STOCK (ADDITIONAL \$06/HOUR)** Immediate openings. Apply in person at customer service desk. **Target** 1300 University Ave. St. Paul **Equal Opportunity Employer**

CLA STUDENT ACADEMIC SUPPORT SERVICES Graduate assistant opening Scholastic committee representative Masters degree preferred. Applications accepted until October 19, 1988 114 Johnston Hall

The Holiday Rush Means An Extra Push And that means we're hiring lots of Holiday Helpers at JC Penney. Join us this holiday season: no experience is necessary. The extra money you'll earn, combined with the store discount will help you stuff everyone's stockings and bring you plenty of holiday cheer.

There's something for everyone at Penney's. Choose a flexible part-time schedule in a commission or non-commission department. All bring competitive pay and the satisfaction of working with a great bunch of people.

So great that once you start with us during the holidays, you'll want to stay on in a permanent position. Join the JC Penney team by stopping by our Rosedale store and applying today!

JC Penney Rosedale **Equal Opportunity Employer**

Restaurant We have a variety of full and part-time positions available. At Arby's we offer you: **\$4.50/hr starting pay** **Advancement opportunities** **Flexible scheduling** **Free uniforms** **Discounted meals**

If interested, please stop by and see manager for an application or call 331-2757

1016 Washington Ave SE Minneapolis

PART-TIME JOB OPPORTUNITIES Finally, a job that understands your need for flexibility. A job so close, you can walk to work. A job that is interesting and fun.

Starting wage is \$4.75 per hour with automatic increases. NO SALES! You tell us what days you want to work. Days, evenings and weekend hours available.

Sound like your kind of job? Call PROJECT RESEARCH at 331-9222. Located 2 blocks from campus.

Project Research, Inc.

Personal care attendant nr St Paul Cathedral. Must be reliable, work 2 weekends/month 222-4545

Telemarketing Pos avbl immed. The I-R party of MN is currently hiring individuals w/sales or telemarketing exp for PT wrk. Flex hrs M-F eve & wknd days Base salary \$5.50/hr + bonus. For interview call 644-8227 & lv mess.

Telephone room supervisor 3/4 days week, 2-10pm good with detail & people, exp pref, competitive pay, stndt loan prog avail, TK Associates Edina 926-7886

Temp PT data entry-LOTUS 1,2,3 Call 870-7099 Paul

Transporter to transport. AMs and PMs From Randolph to Mpls and back Call Judy 460-8208

Video Store clerk position part time/eve wknds. Competitive wages. 824-0716 manager

Wanted: PT sales wknd. Maternity shop in Uptown. Judy 824-8100.

WE HAVE WORK TO FIT YOUR SCHEDULE NEVER LESS THAN \$4.50/HR ROSEVILLE 636-8869 BROOKLYN CENTER 560-3300 GOLDEN VALLEY 546-4583 BLOOMINGTON 831-0213 CDI TEMPORARY SERV. INC.

X-country ski coach at Blake School. Paid position. Starts beginning of Nov. If interested contact Bill Marton 938-5564.

Youth Director for United Methodist Church. Junior & senior high 10-12hrs/wk. 721-5025

23 year old male qud seeking live-in nighttime attendant. Must make supper at 5pm then needed at 11pm 332-0728

'FREE MOVIES' When you are an employee at Pavilion Place Now Hiring cashiers, confection attendants, ushers, ice cream parlor, afts eve and wknds FT/PT Flex-scheduling UA Movies Pavilion Place 631-2452

125a Help Wanted Child Care

Aftn childcare job nr Lk Harriet (SW Mpls) 4 day wk 1-5:30 some full days. Supervise 7yr old boy 3-5:30 do indry study 1-3pm Must be reliable nsmkr refs 823-3849 aft 6

Babysitter 4 adorable children ages 2-7 Must have trans & relate well with kids. \$5/hr 698-3236

Child care and it hskping M-F aftnoons. Kenwood exc pay must have car call aft 6pm 377-7651

Child care in my Shoreview area home 2-6pm 3 days/wk + occ eves Trans needed non-smkr preferred \$4.50/hr 481-7957

Children's World FT & PT pos avbl immed. M-F great hrs & loc. Kelly 623-4642

Nannies Needed 18 & over, 1 yr commitment. East or West coast—minimum \$500/mo. rm & brd, airfare & vacation. Save \$ while seeking career goals. Call Judy eyes 933-7555

NANNY DIMENSIONS INC Especially For Children/Edina Energetic positive individual to wrk w/preschoolers 15-30hrs/wk aftns. Call Min at 926-4534. Substitutes also needed.

Mother's helper child care 4 kids flex hrs 3pm-8pm 4 days a week. must drive call 927-5623.

Need Childcare provider to come to our home for 2 year old, M-F mornings 7:15 to 1:15. You may bring your child 644-0337

Seeking a creative energ. person who loves children to care for 2 toddlers in our home. approx 30 hr/wk, good pay, live in/out. call Deb at 374-3862.

Seeking Exp. child care for 4 children, PT aft. and eve. need own transportation to SW Mpls. Call John 925-0128.

125b Help Wanted Health Care

Ambitious professionals Sensitive self-motivated professionals needed for 4 FT/PT counseling positions in residential setting serving women who are MR \$14,300-16,600 plus excellent benefits 488-0579

FT counselor Sun-Th midnite-8am it hskping, group home for MR SW Mpls. 924-0438

Wait & bar assistant positions avbl D'Amico Cucina in Butler Square 100 N 6th St Apply Mon-Fr 2-5, 338-2401.

125e Help Wanted Sales

Video Movie Rental PT \$4.50-\$4.75 to start. Video Universe Robbinsdale 536-9932

125g Help Wanted Telemarketing

Student telemarketers needed: FT/PT, tailor your work hrs to your studies. Earn big bucks-\$5-\$9/hr + bonuses. Call 378-7276

Telemarketing\$ Twenty people needed to set appointments. No selling involved.\$6 base per hour plus comm. Call Tim after 2 pm 546 2277.

How did 100 recent University graduates:

Gain practical work experience? Build local & national support for the U? Earn a steady income with lots of growth potential? And have a heck of a lot of fun doing it?

By signing up for the Minnesota Alumni Association telemarketing program, that's how!

We offer PT positions to enthusiastic students who think they'd be successful selling the University, 6-9pm, Monday-Thursday

\$5.50/hr with merit increases after 3 months Pick up application at 100 Morrill Hall Minnesota Alumni Association

Banking MAIL TELLER Part Time Noon-4pm, Mon-Fri We have an opening for a Mail Teller in our Payments Services Department at our East Hennepin location. Responsibilities include: logging in documents and preparing and balancing customer transactions received through mail. Qualified applicants will have 10-key by touch and good figure aptitude. Previous teller experience helpful. In addition to a convenient location with free parking, we offer competitive salary and opportunity for advancement. If interested, please apply in person at: First Minnesota Savings Bank, FSB, 77 South 7th Street, Suite #308, Minneapolis, MN 55402. Equal Opportunity Employer. FIRST MINNESOTA SAVINGS BANK FSB

Political Staff CAMPAIGN WORK • Develop your Communication and Political Skills • Work for Environmental Quality • Make a Real Difference in 1988 Elections Progressive Environmental Lobby now hiring for FT & PT career oriented organizing positions. You'll need effective communication and public relations skills, and a demonstrated commitment to environmental, social, and political issues. FT hours: 1-10:30pm, M-F, \$235-325/wk plus 2-3 week paid vacation, health/dental/life insurance plan. PT hours: 5:30-9:30 98/hr • Offices & Affiliates from Coast-to-Coast • Near U of M on busline Clean Water Action If interested in FT position, call 623-3749; PT position call 623-3941 Established 1971 Equal Opportunity Employer

Clerical DATA ENTRY OPERATOR 2nd Shift First Minnesota has a 2nd shift Data Entry Operator position open in its User Support Department located at East Hennepin & 35W in Minneapolis. Responsibilities include entering new account/loan information into CRT, entering changes to existing accounts/loans, and making volume changes to accounts/loans. Qualified applicants will accurately type 40+ wpm and be detail oriented. Previous CRT experience is preferred. We offer a competitive salary plus shift differential, benefits, and free parking in a convenient location. If interested, please apply in person at 77 South 7th St., Ste. 308, Minneapolis, MN 55402. Equal Opportunity Employer. FIRST MINNESOTA SAVINGS BANK FSB

BOOKKEEPING HOLIDAY \$\$\$ 1-9 PM Need 7 people for a great opp. in DT Mpls. Need 6 mos. bookkeeping experience and data entry experience. Must type 40 WPM. Train for 2 weeks, working M-F 8 am-5 pm for a 2 month position. After training work M-F 1-9 pm. This position gives you 40+ more chances to win \$1000.00 or other great prizes in our 'ticket to paradise giveaway.' Call Brittany 371-7480 dolphin TEMPORARY HELP SERVICES, INC.

ENGINEERING STUDENT AIDES Honeywell Underseas Systems Division has openings for student engineering aides. Candidates should be EE or AE (Aerospace) or CS students in their junior or senior years with a knowledge of Fortran, C, or PASCAL, able to work 20 hours a week. There is also a need for a Chemical Engineering Student Aide with no programming skills required. Interested candidates should send resume and transcript to: N. Merrit or J. Westbrook Honeywell Underseas Development 600 2nd St. SE Hopkins, MN 55343

PART TIME POSITIONS OPEN Walk to work from campus Plasma Alliance has a variety of PT positions available in a clinic-type setting. Must be able to work 1-2 evenings per week and most week-ends. Approximately 20 hrs/wk. Good experience for those in the Health Care field. Contact Steve or Rich at 331-9180.

RYDER STUDENT TRANSPORTATION SCHOOL BUS DRIVERS Applications are now being accepted for fall employment with the nation's leader in school transportation services. • PAID TRAINING & PHYSICALS • FREE SHUTTLE SERVICE U of M • TUITION AID PROGRAM • \$6.60/hr + BONUS • HIGHER PAY FOR EXPERIENCE • FLEXIBLE HOURS • CREDIT UNION • PENSION PLAN • MEDICAL PLAN AVAILABLE 645-3959 SNELLING 631-1755 MOUNDVIEW Equal Opportunity Employer

INTERVIEW WITH NORWEST Meet with our hiring personnel & take a tour of the Proof Department at our OPEN HOUSE/INFORMATIONAL SESSION AT NORWEST OPERATIONS CENTER 255 2nd Ave. South Minneapolis, MN Tuesday, Oct. 11th at 1:30pm Wednesday, Oct. 12th at 6pm Thursday, Oct. 13th at 3pm & 5pm If you're interested in a career with real advancement potential, consider joining Norwest as a Proof Operator. We're a major affiliate of Norwest Corporation—a company with a history of developing great careers in the financial industry. ENTRY LEVEL CAREER OPPORTUNITIES You'll be responsible for encoding entries using our new NCR single pocket proof machine. These positions require previous office experience, an excellent figure aptitude, good 10-key skills and a high school education or equivalent. Teller experience considered a plus. Hours: 1st Shift—Monday 11am-8pm; Tuesday-Friday noon-6pm 2nd Shift—Monday-Friday 3:30-11:30pm 3rd Shift—Sunday-Friday (with 1 day off during week) 9:30pm-8am ALL SHIFTS HAVE VARIABLE START & END TIMES In addition to a competitive salary, we offer: • Medical, Dental, Life Insurance • Savings Investment Plan • Pension Plan • Paid Vacations & Holidays • Free Banking Benefits • Excellent Career Advancement Opportunities We invite you to attend this special event and meet with our hiring personnel. Norwest Operations Center, 255 2nd Avenue South, Minneapolis, MN 55479. If you are unable to attend, please forward your resume or letter of interest to the Human Resources Department. Equal Opportunity Employer. NORWEST TECHNICAL SERVICES, INC.

Telemarketing STUDENTS: WORKING TO PAY YOUR EDUCATION? We Offer Great Pay AND Tuition Reimbursement! If you need part time employment to help with the costs of your education, Fingerhut's your solution. We're leaders in the fast-growing direct marketing industry, with entry-level opportunities available for telephone sales representatives. In these positions, you'll contact existing Fingerhut customers, seeking additional orders -- no cold calling is involved. Complete training will be provided; all you need to qualify are good reading skills and an articulate phone voice. In addition to an attractive hourly wage and tuition reimbursement, we offer: bonus and incentive plans; profit sharing; paid vacation; a variety of shifts to choose from (8am - noon, noon-5pm & 5pm-10pm); free parking, and MORE. Start giving your education the extra boost in needs. THE LOCATIONS: MINNEAPOLIS Hours: 8am-noon, 12:15-5:15pm or 5:30-10pm (shift differential for evening hours) Some Saturdays required. Call 379-8800 2021 E. Hennepin, Ste. 338 Minneapolis, MN 55413 BROOKLYN CENTER Hours: 8am-noon, noon-5pm & 5pm-10pm (shift differential for evening hours) Some Saturdays required. Call 566-2710 6860 Shingle Creek Pkwy Brooklyn Ctr, MN 55430 FINGERHUT Equal Opportunity Employer

The Minnesota Daily Classifieds F work PT for Handicapped woman personal care clean/cook. Hours flexible. Shelia 379-4721 125c Help Wanted Office Burnsville, immaculate colonial home, 4BR, 2 1/2 baths, fpic, central air, deck, 2 car garage, drapes, wooded lot, fine school system, excellent family location. Avail immed \$1100/mo 338-4616. Dispatcher FT 2-8pm M-F coordinate dispatch duties, scheduling, must be able to work under stress & a hectic place, knowing Metro area a plus 331-4200 FT computer data entry & phone answer, must be accurate & detail minded, pleasant phone manners, CRT & previous exp a plus. 7-3:30 M-F. Can be trained, we can train the right person 331-4200 EOE 125d Help Wanted Restaurants Friendly energetic cafe needs friendly energetic drivers and counter help. Day and eve hrs 331-9006 PT cook or prep day or night, wkends 378-0467. The Big Ten 606 Washington Ave.

2BR & 1BR. \$425 & \$375. 2841 33rd Ave S 625-0789.724-3482 Jim

1319 7th St SE rm in Dkyn club kit all utl furn men 521-4755 338-4895 378-0797

1115 14th Ave SE eff \$299 A/C 623-9289 631-9111, 1115 14th Ave. SE 1BR \$299 623-9289 or 631-9111

140 Unfurnished Apartments

A Lrg Completely Remod 2BR \$450 and Studio \$285 all new kitchen and bath, ceiling fan, Levolor mini blinds, lrg sunny windows, very quiet sec bldg on bus to U/dtwn 872-7318

A-1 Large 2 BR SE nr U. cpt. pkg. sec. Indry, \$550-625 hid 331-6564.

Bryant Ave S 2401. Spacious 1BR, nat hwd flrs, built-in buffet, bay window, ht pd, \$450 377-1527.

Central Ave 18xx 2BR,street lvl, newly reurn, addl storage, prvt prkg, busline. No pets. \$490. Brandon 781-6924

Special effs. and 1 BR \$299 gas & water pd. Nr. U 378-2036

CLEAN & QUIET 1BR AC No pets. Lease \$235 + util 2441 Bloomington Ave Call 729-3526 920-5681

AVAIL NOW Classic brownstones with beautiful hardwood floors. Convenient to U of M.

CALL RESIDENT MANAGER at 879-0240

East River Terrace Quiet neighborhood overlooking river btwn Franklin & Lake St bridges. 1 BR \$450-475. 2 BR townhouse \$595, AC, no pets. Call 333-2057.

Student Discount Convenient to U of M. Lndrv, near bus. off st prk, ht pd, free cable tv 9mo lease avbl. Studio \$275/mo, 1BR \$340/mo. 870-9697.

U/West Bank 1BR \$358 333-1935 631-9111

600 UNIV. SE. Affordable 1BR(s) \$328-\$348 nr U Cln. Quiet, Sec Bldg, AC, Lndry, Off Str Prkg, Cats OK, Cable TV. Call 331-8421

Clean and quiet 1 BR on 8th St, sec, free prking, \$350, 379-1663 or 644-7745.

Four biks to E Bank 1BR \$390 Off st pkg, sec, lndry. 378-0055

Dinkytown, spacious 2BR, wlk to U, \$430 ht pd 920-4779.

Dupont Ave S 2705 garden view 1BR, nat hwd flrs, built-in buffet lndry, sec, on bus \$335 871-4651

Dwntwn Mpls studio kitch & bath pkg aval \$230/mo 872-8260

Eff. Near St Paul Campus \$300 + Elec. 647-9378, 647-1642

Eff \$385/mo near WB A/C, pool, carpet. 339-5780 eves/wknds

Essex St SE 1015: 3 bks from UM hosp. Lg efficiency from \$300, 1BR from \$320, A/C, off st parking, cptd, basic cable, cats may be ok. 331-5333 378-2799

Fall Special eff \$199 1BR \$299 2BR \$399 nr U 378-2036

F nonsmkr to shr large house own room, \$125+1/6 utils 788-6679

Garfield & Franklin, quaint 1BR nat hwd flrs & wdwk, new kit, sec & lndry, \$340 871-1823

Garfield & 28th: 1BR apt nr Lakes, prkg, express bus to U, ht pd \$340. Call Lois 872-6935

Harriet Ave S 2304 spacious 1BR, refinished hwd flrs, quiet sec bldg, lndry, \$350 874-0367

Interesting Eff. unit share bath & skylite studio on 52 bus. N Mpls. \$215 all pd. 788-6692

1/2 month free. S Mpls. Lrg renovated 1BR. \$300-360/mo. 559-1248.

"Dinkytown" 817 12th Ave SE spacious 2BR sec bldg, off-st prkg, lndry, \$495 331-4258 560-9499

Nr U of M. 1BR. mo/rent \$399. Pay elec. sec. Deposit \$350 11mo.lease. pkg/bus line/ride van. 338-4574.

Oct rent free reduced, 1&2BR, big, clean, new carpet, sec, cable, lndry, prkg. 378-0769 or 452-7643

1BR avbl imm. Huge beauf, high ceiling, nat wdwk, 3 bks to U book store. Allow roommates, previously a motel so definitely worth seeing. 813 University Ave 379-1843

Walk to U. on the bus. Newer bldg. EFF \$340, spacious 2BR \$535 AC, cptd, ht pd, off st pkg, lndry, no pets, mo to mo lease. Call 331-3127

Walk to U StP campus. Reasonable rent, lg 1BRs. Cable TV, gar, nr bus to U. 644-5110, 645-2205, 451-9034

Walk to West Bank & Downtown. 1BR, quiet, clean bldg. \$320-\$330. 333-4001 371-9335.

924 17th Ave SE LG 2BR A/C, sec bldg. \$580 11/1 623-0524 927-9106.

2841
Jim
lub kit
8-4895

3111,
9 623-

ned
nts

1 2BR
ll new
Levons-
dows,
bus to

pt. pkg.
6564.

is 1BR,
et. bay
7-1527.
ect lvl.
t. prvt

036

ET
5 + util
e 681

DW
ith
rs.
I.

AGER

race

ooking
Lake St
2 BR
its.

unt

dry, near
able tv
5/mo.
870-9697.

ik

ll

SE.

348 nr U
C. Lindy,
Table TV.

in 8th St.
9-1663 or

\$390 Off

R. wk to

rden view
t-in buffet
1-4651

ch & bath
50

us \$300 +

A/C, pool,
nds

from UM
\$300, 1BR
y be ok.
378-2799

\$299 2BR

house own
4-6679

aint 1BR
ew kit, sec

it nr Lakes,
ht pd \$340,
135

icious 1BR,
et sec bldg,
874-0367

are bath &
is. N Mpls.

Lrg reno-
559-1248.

us 2BR sec
\$495

y/rent \$399.
150

ce/ride van.

1&2BR, big
cable, Indry,
7643

beaut, high
ks to U book
s, previously
orth seeing.
379-1843

Newer bldg,
R \$535 AC,
ldry, no pets,
1-3127

Reasonable
gar, nr bus
05, 451-9034

Downtown.
t. \$320-\$330.
371-9335.

2BR A/C, sec
24 927-9106.

QUIET 1BR sec. crpt. ht pd. Indry, off-street pkg. walk-to U/on bus line. 425 Univ SE \$355. 331-6262

Rose Hill Apts nr St Paul cmpls. ht. water. assigned prkg. pool. on bus. 1&2BRs \$375-465 Denise 644-4823

Sharon Ave SE. Prospect Park. 2BR w/rent lower for caretaker couple. 11 units. Nov 1. 935-5670

Sunny efcs \$205, \$240, \$250; inc all util. off-street pkg. Indry. on bus line 2206 1st Ave S nr Mpls Art Inst 854-0054 or 874-7389.

Unf eff. avail immediately. \$350/mo plus util. 1 yr lease req. 1st mo rent free. \$450 deposit. Call Barry at 379-1732 or Samuel 623-7849.

Free Color TV
500 Eric St SE. 1 blk to U hosp. LG 2 BR. sec bldg. Indry. off str pkg. sec caretaker #5 \$575/mo. 331-3073 560-9499.

Upper duplex unfurnished, adults only. No smoking, parties or drinking. Available now. 529-4112

Virginia Ave S 3117
St Louis Park spacious 2BR ceiling fan track lighting \$480 938-9122

Walk to Mpls U 1409 SE Como Large 1 & 2BR's 378-2361 451-9034

Lake of the Isles/Uptown 1rm eff. in house to shr bath. Indry. off-bus line, no pets, nsmkr. \$230. all util incl. avail immediately. 377-9184

Large 1BR nat wood floors wall-to-wall closet mini-blinds A/C Indry off str parking walk to U 331-5107

Large 1BR w/sunny view in Prospect Park. Walk to U. beat wood flr. Avbl immed 623-3369

LET THEM DRIVE!
You relax on UofM bus from this 2BR apt living + dining. lots of storage. rsvd. pkg. AC. private balcony, laundry, pool \$150 BONUS to move by Nov 1 \$465+util. \$150 deposit. Call Sharon 646-2209. 378-2838

Cedar & Lake Area
us own

Clean, quiet complex in convenient location to major freeways. On busline to U of M and Brown Institute. Shopping only 2 blocks away.

CALL NOW!
729-2942

MANAGERS WHO CARE
1100 Como
The Vogue
2026-30 Brewster

We have beautiful 1 BR apartments, newly remodeled, close to either St. Paul or Minneapolis Campus. Child O.K. On busline. Newly setting.
Call now 646-1507

RIDGEWOOD 601 & 1820 STEVENS
EXPRESS BUS TO U OF M

Dear Student,
I want you for tenants. I can offer you the best value in town on spacious units with hardwood flooring, windows that look out on elegant residential streets — not garbage cans! Walk to Guthrie, downtown, & major cultural attractions of the city. Come see for yourself. I know how tight your budget is trying to get through school, so now about a \$100 MOVE-IN ALLOWANCE?

Sincerely,
The manager
871-3157/874-0278
Studios & 1BR from \$275

WHERE DOWNTOWN & UNIV. OF MN MEET
Come live in an exciting apt. community in the heart of the Mpls. theater/entertainment district Cedar Riverside. Large apartments with floor to ceiling windows. spectacular views. Walk to the Dome, U of M, dining, theaters, cinema, musical entertainment, parks & scenic bike paths.
Studios, 1,2,3, & 4 Brs.
Utilities paid
A.C., pool, 5 bus lines, heated & covered ramp parking avail. Convenience store on premises.
Call Today 338-8925
Monday - Friday 9-6
1600 S. 6th Street
Equal Opportunity Housing

CEDAR SQUARE WEST

Lg 1BR on University Ave. sec. carpeted. Indry. free prkg. 331-5107.

Lg 1 BR on 4th St. cptd. AC. Indry. prkg. 379-1657 or 644-7745.

Looking for an Apt. Room. House or Rm/mt? We have FREE Listings, Maps and other info. Come to the U.M HOUSING SERVICES, Comstock Hall East 624-2994

325 8th Ave S. effec near East Bank. clean well maintained. bld. \$315+elec. avail now. 378-0108 or 338-4616.

1BR \$335-325 Huge rooms super excellent view through large windows Clean quiet sec bldg on bus Stevens Square area 938-4050

18th and Garfield NE 2BR nr bus 1 1/2 miles to U Avail immed \$420 788-1132

15th Ave 3200 Bright cozy 1BR great area, near park, \$320 ht pd avail now, 920-4779.

14th Av N 18xx
Lg 3BR new carpet 2 full baths ht pd avarl now \$475 871-1112

1405 5th St. SE. 1BR \$445. cptd. off str prkg. 331-7965

1327 7th St. SE. 1BR \$385. cptd. air cond., off st. prkg. 379-2352

1319 E Hennepin, lrg 1 & 2BR, sec bldg, AC, off street parking, no pets, call 378-2710

1010 Essex SE near U Hosp eff \$345. 1BR \$435 379-7541.

MIDWAY AREA Opportunity 1862 Feronia

Spacious, 2BR in small, quiet building. \$495 incl. ht & water paid. Balcony, off st. pkg. easy access to U of M-194.
Cat OK, 6 month lease.
Call 331-7771 for appointment/info.

Minnehaha-3455
Newly remodeled apartments
GREAT LOCATION

- Newly decorated apartments
- On busline
- Great location
- Cable T.V.

Ask about our special \$\$ Saving Offer Today.
729-2431

COME SIGN UP NOW!
WE'VE RE-DEFINED STUDENT HOUSING APARTMENT HOMES AVAILABLE NOW

- Is fitness a part of your life?
- Is time a priority?
- Is quality housing important?
- Pool, sauna, fitness center, AC
- Free shuttle to U of M
- Close to both downtowns, on MTC busline
- Lovely 1 & 2 BR apt. homes

WE WILL SATISFY YOUR NEEDS
338-4574
RIVERSIDE 94

Located at 94E and 24th Ave. Open days and evenings
Professionally managed by Rixmann Properties

FALL SPECIALS!
WALK TO U OF M AND RIVERPLACE
UP TO \$500 MOVE-IN ALLOWANCE!

Eff fr \$360 1 BR fr \$370

2 BR fr \$575
RENT INCLUDES HEAT

| | | |
|-----------------|-------|----------|
| 301 5th St. SE | 1BR | 378-2944 |
| 326 6th Ave SE | 1BR | 331-6009 |
| 320 7th St. SE | 1+2BR | 331-4666 |
| 323 7th St SE | 1BR | 378-3934 |
| 309 6th St SE | Eff | 623-8266 |
| 407 7th St SE | 1BR | 331-7529 |
| 209 5th St SE | 1+2BR | 331-3065 |
| 200 5th St SE | 1BR | 378-9005 |
| 520 2nd Ave SE | 1+2BR | 378-2090 |
| 624 Huron St SE | 1BR | 378-2425 |
| 1503 8th St. SE | 1BR | 623-1978 |
| 325 6th Ave SE | Eff | 331-6009 |
| 600 10th Ave SE | Eff | 623-9052 |
| 519 3rd Ave SE | 1BR | 623-7854 |

On busline, intercom system, cable TV available, offstreet parking, walk to shops, laundry & storage. Free NW Tennis Clubs initiation fee. Up to \$500 move-in allowance with lease. Some restrictions apply.

For more info, call
544-5228
Professionally managed by
Z & S CO.

7 Barton Ave SE 2BR. \$570/mo+util. avbl now. Call 331-5069 or 378-9368.

7th Ave SE. 414: Very nice 1BR apts from \$365. Very close to U, A/C, off str prkg. carpeted, basic cable, cats may be ok. 378-0501

6xx East 3rd St St Paul. eff & 1BR avail now. \$265-350/mo. 338-4616.

615 E 16th St. Cln Eff & 1BR 5 min bus ride from U & 8 blks from Dwtwn. Start at \$270. 338-6913

414 7th St SE 1 BR quiet, secure A/C \$370 379-3336 475-7532 Yom

34xx Cedar Ave. 1BR 1bath. no pets. \$315/mo+util. 338-4616.

33xx 15th Ave S. 1BR in 5plx. Heat Pd. Nr Park. Bus to U. Nat Wd. Laundry. Immed 823-2172

3312-3320 Bloomington spacious 1BRs. cln quiet loc. Off str prk. Avbl now. \$360-\$380. 1/2 months free rent w/6mo lease. 338-4616.

310-330 8th St SE
Spend your winter
Fireside

1 & 2 BR w/frplc, eff. lg cln mod balc. prkg. Indry & bus. 874-7104.

307 W 15th St Loring Pk studio & 2BR nat wdwk & hwd flrs built-in buffet ldry \$325-\$460 871-5902

LAKewood ISLES
Walk to Lake Calhoun just minutes from Calhoun Square and Hwy 100. On express route to downtown and "U." Private landscaped courtyards, top quality upkeep and service.

- Sunken living room
- Fireplace available
- Party room
- Indoor pool
- Sauna
- Private sundeck
- Underground garage

Studios, 1 and 2 BR apartment homes
LakeWood Isles
3031 Euwing Ave. So.
925-4191

MINNEHAHA COURTS

- 2 Bedroom for \$499 per month*
- 1 Bedroom for \$399 per month*
- luxury 1 & 2 bedroom apt. homes
- paid heat/AC
- sauna, exercise room, outdoor pool, BBQ, and sundeck
- garage and off street park. available
- minutes from DT, U of M, Augsburg, St. Mary's Hospital
- families welcome

Call 339-5590
1901 Minnehaha Ave. S.
*for new residents only

FREE RENT
Invest w/your parents in a hm nr the UofM so you live rent free & they get a break on taxes.
Rick Selbick Edina Rlty
926-4606/378-3816

In Prospect Park 2BR upper dplx. Cozy, sunny, deck, prvt entrance, off-st prkg. NS please. Avbl 11/1 \$500 + dep ht pd. 379-2833

KENWOOD DPLX: 3BR flpc nr bus wshr/dr \$800 11/1 377-5840

Large lower duplex 2+BR & 2 baths renovated \$500 Como area 927-7280 days 331-6696 eves

Large 1BR near west bank nice cond. Dog OK \$270 plus 472-4213

Lg Dplx 6BR's, 2baths, LR w/frplc, DR kit w/dshwshr, crptd, prch & sundeck, cable, off str prkg, nr DT \$185/BR.
871-5716 Sally

3BR dplx util pd cls to Mpls campus 870-6615 days 378-0852

3236 Nicollet 2BR Busline, Bmt \$450 Heat pd. Avail now 825-5554

3209 E 25th St. Nr U, 2+BR, full gar. avail 12/1. \$695. 920-3636

2BR just off Univ Ave avbl immed \$450 + util wshr/dryer incl. petoff str prkg. lrg kit. 424-3489 aft 5.

2416 Bloomington Ave S. 7 room 1 1/2 bath house, double garage, newly decorated. \$495 874-1440

17th Ave SE 2BR upper duplex fireplace, garage, near intercampus bus, \$500/mo + util 331-2322

15th Av SE 3BR house W/D \$675/mo + util 623-3296

155 Rooms
AAA. 501 5TH ST SE Coed rms in beaut old mansion, very charming, fireplace, newly decorated. Don't miss! \$205 623-0588 378-2311

First Month Free
LG EFF \$325/MO
5 min to U 333-8228

Sleeping rooms near campus Reasonable 755-9621 ask for Mary or 623-7699

1 Nov Xrlg rm 5mn to U nr bsln crpt, prvt, Indry, kitchn prkg micwv \$180/m util pd res area Call Scott 788-4031.

2+BR Como and Snelling Nr St Paul campus \$560 ht pd 647-1642

2BR Monroe St NE 330. off str pkg. near U. on bus. avail now. \$420 util pd. 378-2512 or 941-4985

2 BR \$528 Nr U. Cln. Quiet. Sec Bldg AC. Lindry. Off Str Prkg, Avbl Imm. Contact Bruce, Dan 331-2907

2nd Ave S 21xx unique efficiencies & 1BR \$250-\$450 fireplaces, newly remodeled with cedar, cable avbl. Art Institute area. off str & garage prkg avbl. no pets, quiet bldg. adults please. 870-1179 870-9796

2nd Ave S 1817-31 facing Steven's Park. Must see to appreciate sparkling clean, sec bldg. w/large 1BR. LR, DR, nr loop, busline, Art Institute, etc 872-1586

24xx Chicago Ave. spac 3BR apts w/frplc and hrdwd floors, \$625+util, 338-4616.

2413 Chicago lrg redecorated effncy \$350 inc util 874-6538 338-4616

200 WEST 15TH STREET
Studio & 1BR Apts avail in clean, quiet, adult bldg. Hardwood flrs & lots of sunlight. Studios from \$275. 1BRs from \$300. 870-7878

2BR all util pd. 2222 Pillsbury complete privacy, spacious \$375 871-8360

1BR Como and Raymond quiet older bldg \$375+elec 645-2395

1BR Near Saint Paul campus \$340+elec avl 12/1 645-7082

1BR walk to St Paul Campus \$380 +elec. 644-1636. 641-0856. 647-1642

1BR \$380/\$390 A/C, cable, free prkg. crpted, Indry 378-9033

150 Duplexes and Houses

Aldrich S 20xx: Lg 2/3BR lower close to bus Adults Avbl 11/1 \$495 + util and dep 920-9001

OCT SPECIAL
Walk/Bike W Bank
MUST SEE TO APPRECIATE
633-0609 (lv msg)

1. Upr 2 levels 5BR+LR+DR+sunrm w/view +beautiful nat wdwk, hwd flrs + FREE Indry & MUCH MORE +++ ALL for \$795 (note: same old rent as of 9/87)

II. Lower 2 levels 3BR+3 studrms+LR+DR+2bath + enclosed porch beautiful nat wdwk, hwd flrs/cpts FREE Indry & MUCH MORE+++ \$695 only.

III. GORGEOUS 3-story HOUSE 7+BR+ 2+ bath, lge LR+DR enclosed porch w/custom drapes patio w/built-in grill, beautiful nat wdwk, hwd flrs/cpts FREE Indry & MUCH MORE+++ ENJOY the privacy ALL for \$995 including 1+ garage. This won't last long. SO HURRY & CALL NOW!

Duplex Apt 4 rent 2 BR garage Indry storage 5 min to U and Dwtwn \$480+ util avbl Nov 1 Call 378-0891 After 5:00

For rent 1BR up dplx 10 min to U \$340/mo w/garage 824-4830

FREE RENT
Invest w/your parents in a hm nr the UofM so you live rent free & they get a break on taxes.
Rick Selbick Edina Rlty
926-4606/378-3816

In Prospect Park 2BR upper dplx. Cozy, sunny, deck, prvt entrance, off-st prkg. NS please. Avbl 11/1 \$500 + dep ht pd. 379-2833

KENWOOD DPLX: 3BR flpc nr bus wshr/dr \$800 11/1 377-5840

Large lower duplex 2+BR & 2 baths renovated \$500 Como area 927-7280 days 331-6696 eves

Large 1BR near west bank nice cond. Dog OK \$270 plus 472-4213

Lg Dplx 6BR's, 2baths, LR w/frplc, DR kit w/dshwshr, crptd, prch & sundeck, cable, off str prkg, nr DT \$185/BR.
871-5716 Sally

3BR dplx util pd cls to Mpls campus 870-6615 days 378-0852

3236 Nicollet 2BR Busline, Bmt \$450 Heat pd. Avail now 825-5554

3209 E 25th St. Nr U, 2+BR, full gar. avail 12/1. \$695. 920-3636

2BR just off Univ Ave avbl immed \$450 + util wshr/dryer incl. petoff str prkg. lrg kit. 424-3489 aft 5.

2416 Bloomington Ave S. 7 room 1 1/2 bath house, double garage, newly decorated. \$495 874-1440

17th Ave SE 2BR upper duplex fireplace, garage, near intercampus bus, \$500/mo + util 331-2322

15th Av SE 3BR house W/D \$675/mo + util 623-3296

155 Rooms
AAA. 501 5TH ST SE Coed rms in beaut old mansion, very charming, fireplace, newly decorated. Don't miss! \$205 623-0588 378-2311

Clean/quiet/furnished \$180 includes whole house privileges/housekeeper/free laundry + 1/10 of the util 14

EDEN GARDEN
CHINESE BUFFET
ALL YOU CAN EAT

\$3.75 LUNCH BUFFET
with soup, appetizer, rice, reg. price \$4.25

\$4.45 DINNER BUFFET
with soup, appetizer, rice, reg. price \$4.95

FREE PARKING IN DINKY TOWN

WEEKDAYS OPEN 11:30 am - 10:00 pm
 WEEKENDS OPEN 11:30 am - 9:00 pm

425 13th Ave. SE
 Mpls., MN 55414
 331-1854

Now open in Dinkytown...

Your full service Travel Agency

MAINLINE TRAVEL

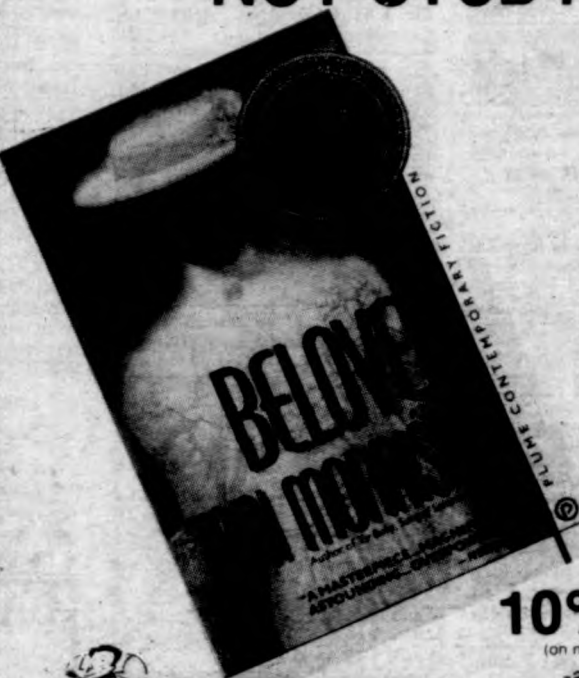
- ... Reserve Now for your Holiday Vacation
- ... MLT Vacations
- ... ITA, Trans-global, Twin City Tours & Crest Tours Representatives
- ... Low Cost Cruises
- ... International & Domestic Airline Tickets

MAINLINE TRAVEL

1316 S.E. 4th St.
 Mpls., MN 55414
 331-7909

Open House Today 5pm - 9pm

GET A BOOK TO READ, NOT STUDY



10% off
(on non-text books) -always

University Bookstores

Mary Z. Johnson
 For State Representative
Because it's time for a change

Paid by students for Mary Z. Johnson for legislature
 700 Washington Ave. S.E. P.O. Box 88

Wednesday Night **BULLWINKLES**
 Seven Corners, Mpls.
 Phone: 338-8520

Beer Special 8-11 p.m.

Corona \$1.50 a bottle



STUDENT SEASON TICKETS
GOPHER BASKETBALL
\$72.00

ONLY \$4.50 PER GAME SEASON TICKET RATES ONLY.
 ORDER BY MONDAY OCTOBER 31, 1988

INSTRUCTIONS

1. Pay by check or money order only. Make payable to the University of Minnesota.
2. COMPLETE THE APPLICATION CAREFULLY.
3. Applications will be accepted by mail or in person at the Bierman Building Ticket Office. More applications will be available at the Bierman Building.
4. GROUP ORDERS MUST BE SUBMITTED AT THE SAME TIME. No additions will be made to groups once the order is in the Ticket Office. Groups must be limited to 10 or less.
5. All locations will be assigned by lottery. Only those applications received by October 31 will be considered in the first lottery.
6. An unrestricted GUEST season ticket may be purchased at the student rate.
7. Pick up tickets in person beginning Monday, November 21. At that time show ID card and paid Fall Fee Statement.

FOR INFORMATION, PLEASE CALL 624-8080
ATHLETIC TICKET OFFICE
 Bierman Field Athletic Building
 516 15th Avenue S.E.
 University of Minnesota
 Minneapolis, MN 55455

READ INSTRUCTIONS BEFORE ORDERING

PLEASE PRINT PRINT INITIAL OF LAST NAME

Student Name: _____
 Address: _____
 City: _____ State: _____
 Zip: _____ Phone: _____

FOR OFFICE USE ONLY

Height Preference (if available when order is assigned):
 Low A-B Deck CC Deck

This is to certify that I have read the regulations and agree to abide by conditions set forth. I will pick up my own ticket(s) and show my ID and proof of student status at that time.

I.D. NO. _____
 Signature _____

University of Minnesota
 1988-89
BASKETBALL TICKET APPLICATION-STUDENTS
 16 Home Basketball Games
 ALL SEATING RESERVED

Student at \$72⁰⁰ ea. (limit 1) \$ _____
 Guest at \$72⁰⁰ ea. (limit 1) \$ _____
 Remittance payable to U of M \$ _____

Complete order, include remittance, and mail to:
 Athletic Office, Bierman Field Athletic Bldg.,
 516 15th Ave. S.E., Minneapolis, Minnesota 55455
 FOR MORE INFO, PLEASE CALL 624-8080