

'Singing Greeks' Plan Meet

Leaders of the "singing Greeks" will meet in Phi Delta Theta house at 4 p.m. today to plan Greek Week's song fest to be held Feb. 17. Eventual winner of the singing groups will be auditioned for an appearance on the Ed Sullivan Show on CBS television.

Finalists for the song fest are 12 fraternities and sororities who were chosen in tryouts last Tuesday and Wednesday. The sorority finalists are Chi Omega, Kappa Kappa Gamma, Pi Beta Phi, Delta Phi, Delta Gamma, Alpha Gamma Delta and Kappa Alpha Theta.

FRATERNITY finalists are Phi Delta Theta,

Delta Tau Delta, Alpha Delta Phi, Sigma Nu, Phi Gamma Delta and Kappa Sigma.

Greek Week officially starts Monday when a convocation will feature George Grim, Minneapolis newsman, as speaker. Grim will narrate movies about crippled children and a crippled children's camp, Camp Courage, which Greek Week is co-sponsoring. Monday evening Greek chapters will hold a Tunic Twirl dance and queen coronation in the Prom Ballroom. At these events, Greeks will wear tunics or togas and laurel wreaths. The garb will be made by the members and will be original.

TUESDAY is scheduled as Social Service Day with the houses giving parties for handicapped children. (Continued on page 2)

MINNESOTA HISTORICAL SOCIETY

Largest College Circulation

Minneapolis, Minn., Friday, February 8, 1957 No. 95

SCSA Will Discuss Bias Clause Deadline

By Ken Langbell

A deadline for bias clause removal will be the main topic for discussion and possible debate at a meeting of the Senate Committee on Student Affairs (SCSA) at 3:30 p.m. today in 109 Nicholson Hall.

Maynard E. Pirsig, professor of law, has been invited to give the pro-deadline argument to the All-University Senate in December.

A motion to send Pirsig the invitation was altered to include an open invitation to anyone wishing to present the opposite side of the question. The 10 fraternities who still have bias clauses in their constitutions were among those to be contacted.

All fraternities contacted by the Daily yesterday reported that they planned to be represented at the meeting. In the majority of cases the fraternity president said he would be there in person.

Most plan to attend for the main purpose of hearing what Pirsig has to say, but some expressed a readiness to reply if the opportunity arises.

Sigma Kappa, academic sorority, was not certain that it would be represented. President Donna Clausen, Education senior, is ill at present. (Sigma Kappa was recently placed on the bias clause list as a result of action of the All-University Judicial Council.)

Main points in Pirsig's presentation to the Senate and those likely to be mentioned at the SCSA meeting are: groups given a deadline will speed up bias clause removal efforts; and groups existing with bias clauses are operating contrary to an anti-segregation decision handed down by the U.S. Supreme Court recently.

"How can anybody discriminate against a few groups by setting a deadline," Nicholas Linheim, SLA sophomore and past president of Kappa Sigma academic fraternity, said yesterday.

"Gradual progress is taking place now, which is what we want and what the University wants. But we won't be able to do any good if we aren't a part of the University any more."

This seems to be the main contention of the fraternities and Sigma Kappa.

Pupils Learn Skills by TV Says Director

By Pete Mohn

Students can be taught skills as well as academic subjects over television and not lose a thing, Dr. John Schwarzwalder, program director for the new educational TV station, KCTA-TV, told a group in the Union yesterday.

"Such skills as home nursing, typing and even piano playing can be taught by TV," he said. "In one third of the cases, students learned as much or more considerably faster, than the classroom taught control group. In no case did they learn less."

DR. ALEXANDER J. Stoddard, television consultant to the Ford Foundation, said that educational television is "a dream, a matter of vision, money and hard work." Pointing to the fact that KCTA-TV needs \$200,000 to operate for one year, he said it will enrich the lives of many people in its viewing area.

"Television is a powerful, versatile and flexible instrument," he said. "It extends many forms of culture to many different walks of life. People of all ages know more about everything now because of television."

Stoddard said that many schools (Continued on page 8)

U Bowling Team Meets NDAC in Regional Play

By Jim Lee

The University's bowling team, winner of three Big Ten championships in the last seven years, will meet North Dakota Agricultural College (NDAC) at 3 p.m. tomorrow at the Union Bowling Alleys.

BECAUSE BOWLING is not recognized by the NCAA as an intercollegiate sport, it is sponsored at Minnesota and other colleges by student unions.

"Bowling and the other games held by the Games Area of the Union serve the same purposes as the minor sports supported by the Athletic Department," Union program consultant Ron Barrett said yesterday.

The Gophers and Illinois have dominated Big Ten rollofs, each winning three championships since 1949. Minnesota titles have come in 1950, 1954 and 1955, and the Gophers' Morrie Brownstein, SLA sophomore, was the Big Ten singles champ in 1955.

WISCONSIN took the title last year, as eight teams competed at Iowa City.

Greek Week

Queen candidates: Molly Long, SLA sophomore; Mary Paschke, Education junior; Mary Jeanne Van Valkenburg, Home Economics sophomore; Judy Van Valkenburg, SLA junior.

Photo by Dan Perlmutter and Art Sear



U Ships Turkey Eggs to Seoul

Twelve crates of turkey and chicken eggs were brought to Wold-Chamberlain Field yesterday afternoon and put aboard a Western Airlines plane. Their final destination is Seoul (Korea) National University.

The eggs were from specialized stocks developed in the University's breeding program on St. Paul Campus. The program is guided by Elton Johnson, professor and head of poultry husbandry, and Tracy Tyler, professor and coordinator of what is called "the Korean project."

The project was given to the University by the United Nations as part of a cooperative program in agriculture.

"The idea behind the Korean project," said Johnson, "is that it will help rejuvenate Seoul National University. Our eggs, which are the result of special breeding, will be used as a base for a breeding program of their own."

A type of egg not available in Korea was delivered to the airport. Johnson said that the eggs are from American hens known for outstanding production.

URC Endorses Judge Youngdahl For High Court

The University Republican Club has announced it will endorse Luther Youngdahl as candidate for justice of the U. S. Supreme Court.

The club passed the resolution at a meeting yesterday and last night expected to inform President Eisenhower of their endorsement.

Carolyn Burdick, SLA sophomore and Republican Club member-at-large, said, "We felt Youngdahl would be the best candidate. He has the experience and knowledge for the position."

Rheumatic Fever Strikes Despite Research Work

By Gordon Bourgin

Despite research advances, rheumatic fever—cause of rheumatic heart disease—still strikes large numbers of young people, recent surveys show.

These surveys are being emphasized during the campus Educational Heart Week. As part of the week's activities, a color film, "Pump Trouble," will be shown at the Union Noon Varieties today. Tonight eight Queen of Hearts candidates will appear at the Powell Hall carnival.

In a state-wide survey it was found that 1,428 cases of rheumatic fever existed in 1955 among children 15 years old or younger. This is an average of 1.7 cases per 1,000 children.

THE SURVEY was conducted by the Minnesota Heart Assn., (Continued on page 2)

All-U Senate Discusses U Enrollment

The main topic for discussion at the All-University Senate meeting yesterday concerned implications of an increasing University enrollment.

This is in line with an alternative to expansion presented to the Governor by the Governor's Committee on Higher Education recently which suggested:

"THAT THE opportunity to attend a college in this state be denied in the future to many capable young people who today would have that opportunity."

The Committee report immediately goes on to reject this alternative.

The Senate, made up of 104 faculty members, seemed to do the same. Presently each of the five schools of the University determines its own entrance requirements.

THESE requirements range greatly from the high-school education requirement of General College to the 75 percentile high school rank specification of the College of Agriculture, Forestry, and Home Economics.

The possibility of establishing an all-University requirement was suggested and a dozen speakers presented their views.

President Morrill talked for 15 to 20 minutes on the same subject, touching on junior colleges and how they would not relieve the enrollment pressure on the University if set up on a state-wide basis.

THE DISCUSSION was the result of a report by the Senate Subcommittee on Education, which was presented by Theodore Horhberger, professor and chairman of the English Department and subcommittee chairman.

Government Reveals Mid-East Activities

From the Wires of the Associated Press
By Linda Ascher

Any new Soviet arms deliveries to Egypt, the State Department said yesterday, "could be regarded as a violation" of the U.N. ban on such shipments to the Middle East.

Press officer Lincoln White said the department is deeply interested in widespread reports that Russia has sent fresh weapons to Egypt since the end of the fighting there in November.

He said he was unable to confirm or deny the reports, but that if they were true they would "not contribute to the restoration of peace and stability in the area."

There were these other developments in Washington yesterday in the Middle East situation:

● Visiting Crown Prince Abdul Ilah of Iraq went on record with a broad endorsement of American policy in the Middle East, including President Eisenhower's proposals for blocking an expansion of communism there.

● Visiting King Saud of Saudi Arabia said, "There is no real danger of communism in the Middle East." At the same time he praised Eisenhower's anti-aggression program as "a good proposal worthy of consideration."

● Saud held another consultation with representatives of Iraq, Iran, Jordan, Lebanon and Greece. At the end of this meeting Prime Minister Charles Malik of Lebanon told newsmen: "I find the King a real friend of the United States."

King Saud will pay a final visit to Eisenhower this morning and leave with his party for Sapin tomorrow. Murray Snyder, assistant White House press secretary said "I anticipate there will be a communique" after Saud's meeting with the President.

Officials said the communique probably will reflect agreement on extending the pact under which the U.S. Air Force uses the strategically situated Dhahran Air Base and possibly agreement on increasing Saudi Arabia's 15,000-man military force with U.S. aid.

In Utah . . .
defiant convicts, rulers of Utah State Prison in a 12-hour spree of violence, surrendered their hostages and retreated to their cells yesterday.

In return, Gov. George D. Clyde promised them an impartial investigation of a list of grievances handed to him by a negotiating committee.

The prisoners first insisted that Clyde bargain with them on the grievances as a condition of releasing their 27 hostages, who included members of a church basketball team and several teachers. Clyde, who has been in office only about a month, refused. He told the convicts he wouldn't even consider their complaints until all hostages were freed.

The convicts gave up just before dawn. About 500 of the prison's 618 inmates were involved.

The United States . . .
announced yesterday it will open negotiations with Communist Poland soon on that country's proposal to borrow American dollars and buy American goods. The idea is to shore up Poland's newly won independence of Russia.

Lincoln White, State Department press officer, said the Polish government has been invited to hold the economic talks in Washington and has accepted. He thought the negotiations would start soon. Other sources said the United States was ready to begin them early next week.

The Warsaw government hopes to get trade credits here totaling about 100 million dollars at least. It wants these to finance the purchase of urgently needed cotton, modern farm machinery, new mining equipment, fats and oils, chemical fertilizer and grains for cattle food.

Southern Witnesses . . .
denounced President Eisenhower's civil rights program yesterday as containing the seed of a "Soviet-type gestapo."

Critics from Georgia and Alabama opened such a broadside before a House Judiciary Subcommittee that Northern members protested against what they called "inflammatory" statements.

"Enactment of this legislation," Atty. Gen. Eugene Cook of Georgia said, "would result in creation of a federal gestapo which would hold needless investigations, pry into the affairs of the states and their citizens, and intimidate a majority of our citizens solely to appease the politically powerful minority pressure groups inspired by the Communist ideologies of the police state."

Rep. Lanham (D., Ga.), appearing as a witness against the civil rights legislation, said "Stalin himself could not have conceived" as effective a surrender of local powers as the program would authorize.

Dr. Clifford C. Furnas . . .
Assistant Secretary of Defense for research and development, confirmed officially yesterday that work on an atomic-powered airplane is being "stretched out." But he said the reasons are technical, not budgetary.

Furnas, who will leave the Pentagon next week to return as chancellor of the University of Buffalo, was asked as a news conference about reports of a cut back in the A-plane project. Sen. Symington (D., Mo.), among others has said a slowdown has been ordered.

Furnas said the project is being "stretched out for technical reasons." Then he added that "we originally were a little optimistic" on the program.

Fever . . .

(Continued from page 1)

Minnesota Medical Assn., and the State Health Department.

As a comparison, polio figures among children from the ages of 5 to 19 show that .38 cases exist per 1,000 children in a minimum year. In an epidemic year 2.92 cases are reported for 1,000 children. These figures were released by the State Heart Assn.

Rheumatic fever, according to the State Heart Assn., is the second highest killer among children five to 19.

THE SURVEY also showed that each year 3,000 cases of rheumatic fever are reported in Minnesota. This is an average of .73 cases per 1,000 population.

Of 3,063 Minnesota doctors questioned in the survey, 50.8 per cent replied. Figures released in the survey were compiled from those replies.

A follow-up survey of rheumatic fever cases in 1956 has been completed. Although figures are not yet available for release, this survey "substantiates" the earlier one, according to the State Heart Assn.

In another survey, conducted last fall, University Health Service doctors found 22 cases of "definite" and seven cases of "possible" rheumatic heart disease among incoming freshmen.

THIS SURVEY was part of a larger study by the U.S. Health Service on rheumatic fever and rheumatic heart disease among college freshmen.

As a result of questionnaires filled out by 4,510 examined freshmen, 425 students were given further examinations. Rheumatic fever histories were confirmed in 91 cases. There were 27 "questionable" histories. The remaining cases were not confirmed as having had rheumatic fever.

Rheumatic fever causes damage to the lining and valves of the heart, as well as to the heart's muscle and covering, according to Dr. Robert Good, University Heart Hospital.

OUT OF ANY 100 cases of throat infections caused by certain streptococcus organisms, three cases of rheumatic fever will develop, Dr. Good said.

Greeks . . .

(Continued from page 1)

dren. This is also fund day with Greeks selling buttons on Twin Cities streets. The Greeks will wear Abe Lincoln hats and will carry signboards.

Discussion forums begin Wednesday and will be participated in by both Greeks and independents. Representatives of both groups will discuss student-faculty problems.

THE ANNUAL Greek Week Olympics will be held in the Field House next Thursday. These are competitive events and include a chariot race in which are entered chariots from Greek organizations. Tug-of-wars, shotput contests and various types of relay races also will be held.

Have a WORLD of FUN!

Travel with SITA
Unbelievable Low Cost Europe
Orient

43-65 Days from \$525
Many tours include college credit.

Also low-cost trips to Mexico \$169 up, South America \$699 up, Hawaii Study Tours \$528 up and Around the World \$1398 up.

Ask Your Travel Agent
332 S. Michigan Ave.
Chicago 4
HA. 7-2557

Minnesota Daily
World News

Ski Bus to . . .
Loch Lomond, Canada

Package Price: \$28.50
(*5 meals, *First-Class Motel *T-Bar Tickets *Bus Fare)

Leaving Friday Night
Back Sunday Night

For reservation and information, also other trip schedules—JA. 2-7676

TATRA SKI SHOP
2418 Golden Valley Rd.
JA. 2-7676
Open 10-9 P.M. Weekdays,
9-6 P.M. Saturday
(Bring this ad with you)

ANNOUNCEMENT BY
Illinois College of
OPTOMETRY

Applications for admission to classes beginning September 9, 1957 are now being received.

Three year course of professional study leading to the Degree of Doctor of Optometry

Requirements for Entrance:
Two years (60 semester hours or equivalent quarter hrs.) in specified liberal arts and sciences.

WRITE FOR BULLETIN TO: REGISTRAR
ILLINOIS COLLEGE OF OPTOMETRY
3241 So. Michigan Ave.
Technology Center, Chicago 16, Ill.

Minnesota Daily . . . bulletin board of the campus

WANT ADS

| | | |
|---|--|---|
| <p>HELP WANTED</p> <p>NEAR UNIVERSITY. Part-time work. car necessary. Call Mr. Rice, WE. 9-2691 or JU. 8-1429.</p> <p>ATTENTION COLLEGE MEN Placement offer to suit your schedule. Are you qualified? Call WA. 6-3811, Mr. Decker or Mr. Eckstein daily before 9 p.m.</p> <p>LICENSED Practical Nurse, four days a week near campus. FE. 8-2084.</p> | <p>FOR SALE</p> <p>MICROSCOPES—Repair, rentals, sales — New and used, all accessories. Bower and Haack, 414 14th Ave. S.E. FR. 1-5791.</p> <p>COMSTOCK contract. Available immediately. Call Judy Fawcett, FR. 1-1339.</p> <p>6 1/2" HEAD SKIS and ski-free bindings. WA. 2-7931.</p> <p>SANFORD contract. Single room at 20% discount. Available immediately. Contact Mr. Rarig, CA. 2-3565.</p> <p>EXAKTA I, with accessories for close up, slide copying and micrography. Ext. 6634.</p> <p>DORM contract, single room. Call room 121 Pioneer Hall after 6 p.m.</p> <p>BEAUTIFUL overcoat and other clothing for a tall man. TA. 5-1650 Sat. after 2 p.m. and Sun.</p> <p>WEBCOR tape recorder, 3 speakers. Used 30 hours. DuWayne Kloos, FR. 1-2164.</p> <p>PIONEER contract available immediately. Call Carlos Avery, Rm. 724.</p> <p>1949 MODEL dormitory door. Jet black finish. Complete with number and probably repairable 19520. Must sacrifice; terms arranged. Ron Evans, Centennial. WE. 9-3614</p> <p>HI-FI PHONO for sale; low triode power amplifier, per 1948 RCA Tube Manual; separate pre-amp, per "Radio & Television News," November, 1952, p. 50; G.E. LP turntable w/Var. Rel. pickup; 20W 12" coax speaker in matched base reflex enclosure; all contained in custom cabinet, approx. 30" x 40" x 20"; asking \$100.00, complete. Noah S. Rosenbloom, Redwood Falls, Minnesota.</p> <p>4 YR. OLD — 3 BEDROOM HOME. Beautiful fireplace in livingroom-dining L. 538 Otis — \$16,500 — Terms. Near Town and Country Club. MI. 4-8338, MI. 8-5949, off. CA. 4-9694.</p> | <p>TYPING AND MIMEOGRAPHING</p> <p>DORIS TYPES EVERYTHING, almost 729 8th Ave. S.E. FRANKLIN 1-1122</p> <p>TYPING. Thesis, term papers, reports. Quality work. Experienced typist. Reasonable. TA. 3-3117.</p> <p>IBM ELECTRIC, theses, prompt, U sec'y. B.A. Call even., weekends. FR. 1-2658.</p> <p>ELECTRIC TYPEWRITER. Experienced typing, thesis and manuscript. Reasonable rates. Call FR. 1-9270.</p> <p>TYPING. FE. 9-6140 615 Oak St. S.E.</p> <p>EXPERIENCED term paper and thesis typing. Reasonable rates. FE. 5-5710.</p> <p>SECRETARY—thesis, manuscripts, types expertly, reasonable. FE. 6-8096 or FE. 2-8158, ext. 7083.</p> <p>THESES, reports. Expert, reasonable. Pick up and delivery on campus. FR. 1-2527.</p> <p>THESIS typing, expert typing. Free pick up, delivery. ST. 1-9923.</p> <p>ELECTRIC TYPEWRITER—experienced, reasonable. U Village, FR. 1-2844.</p> |
| <p>WANTED</p> <p>STUDENT to lead YMCA Club 3-5 p.m. Choice of Mon., Wed., or Thurs. Paid leader. Contact Bill Beck, TA. 7-2837.</p> <p>GIRL, prefer grad student, to share newly redecorated rooms with one. Kitchen shared with 2 other students. 3 blocks from Folwell. FR. 1-5009.</p> <p>CHEM. students to eat supper meal at Chem. Frat. FR. 1-5951.</p> | <p>ORCHESTRAS</p> <p>DICK & DON MAW ORCHESTRA Northwest's top college and high school attraction. Phone days—FE. 6-8041 or FE. 6-6986. Evenings—FR. 7-9983.</p> <p>For a Musical Treat That Can't Be Beat: "CREOLIANS," PA. 2-2085 Any Time.</p> <p>ROD AABERG ORCHESTRA—TU. 1-8188</p> <p>"VELVETONES" 1-8 pieces. Dick Yvonne, JU. 8-8168.</p> <p>"THE CHORDSMEN" TED NASTOFF — ST. 1-8528.</p> | <p>FOR SALE TYPEWRITERS</p> <p>TYPEWRITERS, all makes sold, rented and repaired. New portables, easy terms. We deliver. Crane's, 1417 4th St. S.E. FR. 1-5969.</p> <p>TYPEWRITERS repaired and rented. FE. 9-8086.</p> <p>NEW REMINGTON Quietwriter portable. No payment until Feb. 1, 1957. \$1.00 per week thereafter. AAA Typewriter, 1006 Marquette, Minneapolis. FE. 9-3086 or 95 East 5th St., St. Paul. CA. 4-7881.</p> <p>150 TYPEWRITERS FOR SALE OR RENT. Quick Delivery—Expert Repairs. "KIRK" 617 14th Ave. S.E. FE. 2-9357.</p> |
| <p>TRAVEL SERVICES</p> <p>TRAVEL for less. 3 to 9-week Europe trips only \$335 to \$1095. Ship and airline tickets anywhere in world. Call Reservations Department, AMERICANS ABROAD. Your campus travel service. FR. 1-7909.</p> | <p>LOST AND FOUND</p> <p>LOST: Fraternity pin, Sigma Alpha Mu. Initials M.D.S. on back. Reward \$5. Harry Silver, FE. 3-6527.</p> <p>LOST: Phi Epsilon Pi frat. pin. Gold lettering on blk. field, pearl trim. Initials L.G.A. '56 on back. Harvey, TA. 2-8578.</p> <p>LOST: Box of slides from Johnston Hall. Call FR. 1-3856.</p> | <p>FOR RENT</p> <p>FURNISHED apt. 2 blocks from campus. \$55 mo. 1612 7th St. S.E. FR. 1-2049.</p> <p>TWO ROOM apartment. Sleeping rooms and cooking privileges. 400 Oak St. S.E. JA. 9-1151.</p> <p>TWO separate sleeping rooms. Kitchen privileges, near bus and shopping center. JA. 9-1151.</p> <p>FURNISHED apartment, 5 rms. Near campus. Accommodate 4. FR. 1-5243.</p> <p>909 4TH ST. S.E. Two rm. furnished apt., 2 girls or mother and child. FE. 5-3765.</p> <p>TWO FURNISHED rooms, 1105 Pierce St. N.E. ST. 9-5989 after 5 p.m.</p> <p>ONE OR 2 girls to share 5 rm. apt., kitchen privileges. FE. 5-1051, FE. 8-1307.</p> |
| <p>FOR SALE AUTOS</p> <p>'48 FORD V8 2-dr. radio, 2 heaters—Runs like a top! Call Denny, JA. 2-8265.</p> <p>'48 PLYMOUTH 4-cy. epe., spec. del., R & H. Call Larry Sanford, FR. 7-2156 after 6 p.m.</p> | <p>MISCELLANEOUS</p> <p>HYPNOTISM — Amateur hypnotists and persons desiring to participate in hypnotism experiments please call TA. 4-7626.</p> | <p>INSTRUCTIONS</p> <p>LEARN to dance—Waltz, Fox Trot, Lindy, Rumba, Samba, Tango, Mambo. 5 private lessons, \$10. Palm Dance Studio, 708 Henn. Ave. Phone FE. 2-9816. Hrs. 1 to 10 p.m.</p> <p>CARLETON'S French for Graduates begins March 20th, German begins March 9th (tentative). Call FR. 1-1132 now.</p> |
| <p>APPLICATION PHOTOS</p> <p>RETOUCHED and nicely finished. Half doz. \$1.25. Sussman Studio, 704 Hennepin Ave. FE. 3-1912.</p> | <p>WANTED TO RENT</p> <p>FURNISHED apartment, 2-5 rms. for 1 or 2 girls. Near U. Call Rosemarie, MI. 4-1625.</p> | |



Giving a preview of what can be seen in the National Canadian Ballet's 8:30 p.m. performance today in Northrop Auditorium is dancer David Adams. Tonight's program includes "Les Rancesous," "Fisherman and His Soul," and "Offenbach in the Underworld." A few tickets for tonight's performance remain as well as some for tomorrow's 2 and 8:30 p.m. performances. Tickets are available in 105 Northrop.

Kerlan Collection Now On Display in Library

Over 100 of the 3,500 volumes constituting the Kerlan Collection of Children's Literature now are on display in the Main Hall of the Library.

The entire collection was presented to the University of Minnesota in 1949 by Dr. Irvin Kerlan, associate medical director of the Food and Drug Administration.

ONE OF THE 12 cases in which the display is housed contains illustrated tales from Germany, Poland, Brazil, Italy, Denmark, Sweden and Austria. The sign "Round the World" is appropriate because that is exactly where the collection has traveled under the auspices of the State Department.

Some of the specially designed volumes in the collection are "pop-up" stories with three-dimensional scenes, a book that folds into a circus tent, a Merrily-Go-Round book with miniature cages containing animals and even a glow-in-the-dark story.

In another fable, "Hoppie" the grasshopper on a plastic spring jumps from page to page as the story progresses. "Alice in Wonderland" cut-outs and a stand-up train, with 10 miniature stories about a trip on the railroad also are included in the collection of literature for young readers.

WHEN KERLAN became attracted to the field of children's literature, he began to select and accumulate illustrated books, many of them first editions autographed by the author or illustrator.

He also acquired original drawings, manuscripts and original layouts made by the authors.

Though his main interest was procuring contemporary children's books, he sought early editions of classics such as Mark Twain's "Tom Sawyer." He also made a point of securing each year's annual Newberry and Caldecott awards selections made by the American Library Assn.

When he presented his collection to his alma mater because it had outgrown his home, the University's Board of Regents cited him for his "generosity and unflagging interest."

Tuition Exemption Offered Students Studying Abroad

Tuition exemption grants for University students interested in studying abroad now are available from the Free University of Berlin.

Under the grant, a student who wishes to study on his own funds may be exempted from all tuitions at the Free University of Berlin. An American student can easily support himself in Berlin on \$50 per month, according to an announcement from the German university.

Interested students should apply for a recommendation from the Dean of Students, 200 Eddy Hall.

2 Law Scholarships Currently Available

Two scholarships for first-year students entering the law school in the summer or fall of this year currently are available, according to William B. Lockhart, dean of the Law School.

Interested students may obtain application forms from the Law School office. The form, college transcript and letters of recommendation must be submitted by March 15.

The scholarships, covering resident tuition and books, will be awarded on the basis of ability and need. They are granted from the Wilbur H. Cherry Fund, established by law alumni in memory of the former law professor.

Greek Week Duplicate Bridge Tourney Planned

A duplicate bridge tourney for Greek Week will be held from 7 to 10 p.m., Thursday in the Union Main Ballroom. Prizes will be trophies and the entry fee will be 50 cents per person. Those interested may register with Mrs. Estelle Lambertson in the Union Game Room.

This event is sponsored by the Union Board of Governors.

Prof Appointed to Allergy Council

Dr. Jerome T. Syverton, head of the Department of Bacteriology and Immunology, has been appointed to the National Advisory Allergy and Infectious Diseases Council.

The Council is responsible for making recommendations regarding grant activities of the National Institute of Allergy and Infectious Diseases, Bethesda, Md. It also provides guidance on broad research policies related to the programs of the Institute.

CANTERBURY CLUB PRESENTS . . .

THE REV. R. S. LEE, M.A., B. OF LITT., PHD.

Author of "Freud and Christianity," Vicar of St. Mary's, the Virgin, Mother Church of the University of Oxford.

Subject:

"GOD AND THE OEDIPUS COMPLEX"

7:00 P.M. * WEDNESDAY, FEB. 13

1015 7th St. S.E.

WANTED — MAN TO FILL

BEST STUDENT JOB ON CAMPUS!

Job: Manager of Chateau Coop Club

REQUIREMENTS OF APPLICANT:

1. Must have had some accounting.
2. Training period starts in early March.
3. Must have 2 years of school remaining.
4. General business experience is helpful.
5. Must be willing to work year around.
6. Must possess fact and be interested in management.

COMPENSATION:

Board, Room, plus GOOD pay. SEND complete letter of application and transcript of grades before Feb. 15, 1957 to

CHATEAU COOP CLUB

1419 5th St. S.E.
Minneapolis 14, Minn.

THEY'RE TERRIFIC!
GIRLS
Downhills
by SNOW VALLEY

Now's the time to get these smartly tailored Wool Gabardines in Navy & Black! Sizes 8 to 18. Two front zipper pockets.

\$15 value, only . . .

\$9.95

STYLE TOGS

31 So. 5th St. Minneapolis AND KNOLLWOOD PLAZA

New!

Old Spice
HAIR GROOM TONIC

Old Spice
HAIR GROOM TONIC

IN UNBREAKABLE PLASTIC!

Grooms your hair while it treats your scalp. Controls loose dandruff. 1.00 plus tax

SHULTON New York • Toronto

PHI MU ALPHA Professional Music Fraternity

WILL HOLD

TRYOUTS FOR YEOMEN OF THE GUARD

BY

GILBERT AND SULLIVAN

To Be Presented May 9th to the 12th in Scott Hall Auditorium

ON

Feb. 12 From 2:00 p.m. to 5:00 p.m.

Feb. 14 From 7:00 p.m. to 9:00 p.m.

in Room 104 SCOTT HALL

All singers are required to sing part of some work by Gilbert and Sullivan and to bring their own accompanist.

Tryouts will also be held for dancers and piano accompanists.

20% Raise Will Help Fight Industry's Appeal for Profs

OF HIGHEST priority in this year's legislative requests is a 20 per cent "across the board" increase for all faculty salaries over the next biennium.

When President J. L. Morrill first made this request public last quarter, the Daily published material comparing University salaries unfavorably to those of comparable schools. Even if the University and neighboring schools have their salaries boosted this year as requested, the University would still lag behind.

The results of a national survey by Prof. John D. Akerman, quoted on today's editorial page, indicate how low faculty salaries have affected one scientific field.

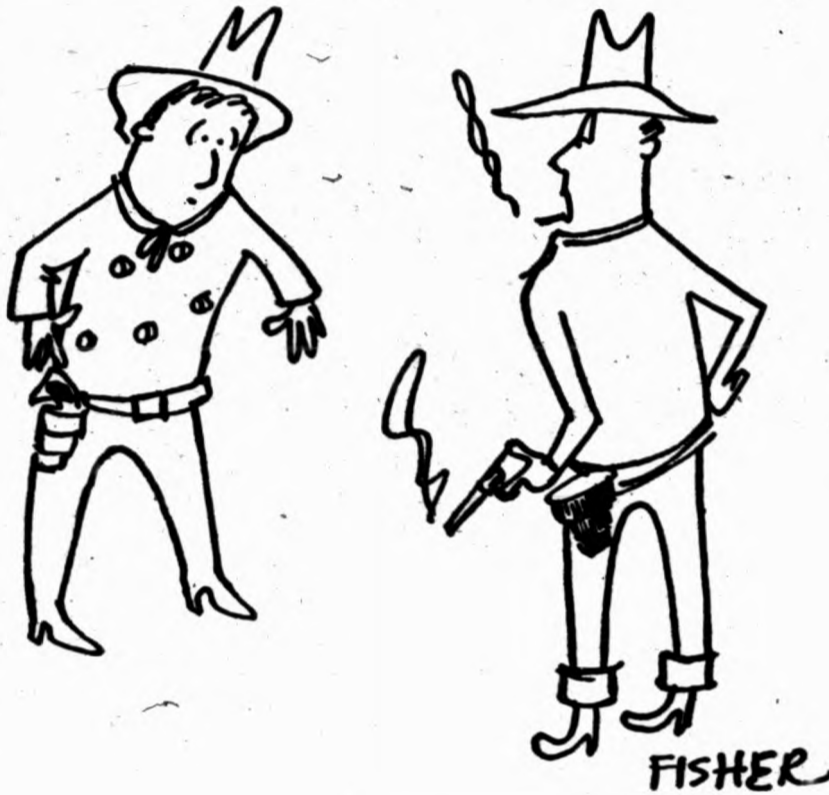
A survey of 23 aeronautical engineering departments showed that 61 faculty members left for jobs with industry. Of these, 57 received salary raises of from 50 to 100 per cent.

AND THESE switches to industry are occurring not

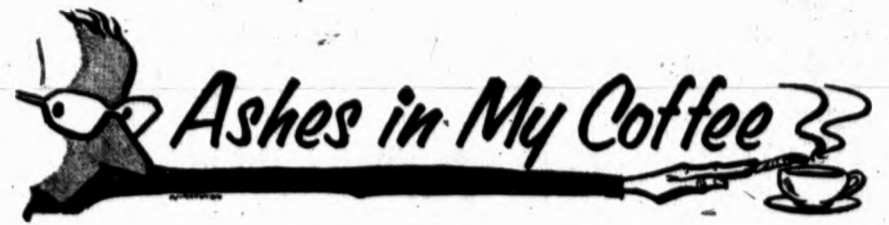
only in the sciences. Wherever industry has vacancies that can be filled with academic staff members, it has comfortable salaries with which to entice them.

Obviously, universities cannot compete financially with industry. But it occasionally becomes too difficult for faculty members who do prefer a university environment to resist industrial offers.

Granting the requested raise to the University faculty would help the matter.



"You're pretty slow on the draw there, Joe."



By Allen Simpson
Of the Daily editorial page staff

* Leonard Lackluster, chosen to judge the Slush Queen of 1957 Contest, passed up his customary avocation of sticking pins in wax effigies of girls who had refused to go out with him, and approached his task with zealous objectivity.

After surveying the bevy of hopeful candidates for several minutes, he approached the first girl, a professional queen candidate with lanky blonde hair and a dazzling though blank smile.

"HELLO, LITTLE girl," began Leonard, pinching her. She swiped him one across the moustache and he moved on to the next contestant, Miss Library Stacks of '56.

"And what have you done to warrant being our queen?" he asked, with a fatherly gleam in his eyes.

"I was classroom monitor in the sixth grade and have many letters from boys attesting to my worth at fraternity parties," she replied.

"Will you go out with me?" asked Leonard.

"Not even if you were the last man on earth," she replied.

"FOR THE PURPOSES of this contest, you may consider me the last man on earth," snapped Leonard, no amateur when it came to repartee.

The third contestant was Constance Caldwell, General College freshman.

"And you, Constance Caldwell," said Leonard Lackluster. "Will you tell me of your talents?"

"Certainly," she cried. "I play the piano, baby-sit and can recite Hamlet's soliloquy."

"Which one?"

"The one in the play by Shakespeare," she replied without hesitation.

BY THE TIME Leonard had gone down the line, all but three candidates were eliminated. Those remaining were Lois Lane, who had called Leonard an uncouth bore the year before; Phyllis Taylor, who had thrown stones at him at a freshman picnic; and Mabel Petersen, 30 times a candidate for various queen contests, runner-up during the war years for Greek Week Queen, and a junior after 16 years at the University. All three candidates were lovely, graceful and nice to look at—except possibly Mabel, who in her 36 years had grown somewhat slatternly.

The choice was a hard one for Leonard, and since the results will not be officially released until Monday, it would be unfair to reveal them here.

In a recent interview with the Minnesota Daily, Leonard Lackluster announced his engagement to Mabel Petersen, which was revealed at a simple dinner attended by the couple's parents.

Industry Offers Profs Inducements to Leave Academic Life

"There will be awarded in sciences, in the whole United States, 3,000 Ph.D.'s this year. Our company must and will hire 1,500."

This is one of the "below the belt" tactics that some industries use in their attempts to "raid" university faculties, according to Prof. John D. Akerman, head of aeronautical engineering.

Akerman addressed a New York conference of aeronautical engineers Jan. 30.

"The conflict between universities and industries became particularly acute last spring," he said. "Then most departments found that they had to increase their staffs to meet the advancing wave of increased enrollment in senior and junior years—where staffs were at a minimum, as a result of the preceding low enrollment."

In this situation, the loss of faculty members of senior rank was very critical for three reasons, Akerman said. The reasons he cited were:

- No free supply of experienced personnel.
- Experienced personnel were particularly in demand by industry.
- Top teaching positions could not be filled with young men from teaching assistant or instructor ranks.

Akerman had conducted a survey on loss of aeronautical engineering department faculty members to industry at the end of the 1956-57 school year. In replies from 23 departments, he discovered a total of 15 teaching staff members and 46 research staff members had been hired by industry.

Of the 61 faculty members who left for jobs with industry, only four reported a salary increase of 40 per cent or under. The other 57 received increases of from 50 to 100 per cent.

"However, if anybody makes the conclusion that money is the only attraction to

industry, he would make a grave mistake," Akerman commented. "There are some very weak spots on the universities' side and some very good inducements on the side of industry."

- He mentioned, as examples:
- Slow advancement in academic life.
 - Requirements of doctor's degree to reach top positions in education.
 - Better opportunity to select specializations in industry.

"A sad picture unfolds when we look into the future," Akerman continued. The same 23 departments questioned on his survey reported that as of last September they had vacancies for 11 professors, 10 associate professors, 20 assistant professors and 17 instructors.

"We can see that if the industries would not have hired away from the universities the 15 teaching staff members they did take, the aeronautical school still would be 41 teaching staff members short as of last September," he said.

Therefore, the problem of shortage of teaching staff is critical by itself and has to be solved by the universities by some other means, he remarked.

"It is obvious that the transfer from universities to the industries is not the major cause of complaints, but that the need for the larger staff at the universities is the real cause and that the hiring by industry—and particularly some bad ethics or 'blows below the belt'—are only the effects of the situation.

"I would like to emphasize," Akerman added, "that established older companies, big or small, in this respect follow sound and decent hiring policies."

Raiding by industries is not so vicious, he commented, except for some exceptionally unethical cases.

"The shortage of scientific personnel now

plaguening this country is for the first time reaching the universities," he explained. "The time is gone when men with scientific abilities had a chance only at the universities to satisfy their desire for research and teaching, and they had to work for universities for unbelievably low compensation.

"It is foolish for industry to imagine that with money and numbers of employes hired, it will accomplish the same as what universities are doing or could do.

"It is just as unreasonable for the universities to assume that they can keep the best brains in the ivory towers, isolated in a 'status quo,' without adjusting university policies to the expense, at his own tempo or not at all, while the other creates opportunity for himself and a number of assistants to do research in a specialty requiring facilities and equipment which the university cannot provide.

• Since industry needs outstanding professors not for eight hours of routine work but for their ideas, their experience and advice, proper arrangements can be made where the university allows a certain time for outside consultation and the industry makes a long-range contract for consultations at fixed salaries and fixed maximum time requirements.

• It may be wise for universities to realize that there are outstanding men in industry who would like to join the academic staff—even though lacking a doctor's degree, a must for modern world."

Recommendations made by Akerman to "solve this dilemma" are:

- Provide opportunities for professors to do research work with necessary equipment and assistants in their chosen fields.
- Provide opportunities to earn a decent living through liberal scholarships or part-time work to graduates, so that they can remain at universities and pursue studies towards a higher degree.

• Provide increases in salaries to academic people, whether they are or are not on a nine- or 12-month appointment. It certainly is not a help to universities to have a man go out for three months into industry to secure a paycheck, so that he can work at low compensation for the next nine months.

• Provide extra compensation for outside contract research work carried on by teaching personnel. It is very unjust that two men of the same rank, doing approximately the same teaching, should get the same compensation when one does his research at the university's top academic rank. As it is now, who will join a faculty if he sees that a lack of a doctor's degree is an iron curtain for him from the start?

The Minnesota Daily

World's Largest College Circulation

Official Newspaper of the University of Minnesota in Minneapolis, Minn.

Published daily during the college year except Saturdays, Sundays, holidays and days following holidays, and twice weekly during Summer Sessions by the Minnesota Daily at the Commercial Press, 418 Third St. S., FE. 6-6644.

Entered as second class matter Aug. 30, 1900, at the postoffice in Minneapolis, Minn., under act of Congress March 3, 1879.

Subscription price, \$5 year. Single copies, 5 cents.

Editorial and Business Offices—10 Murphy Hall, University of Minnesota

Vol. 38 No. 95

EDITOR JOHN TOMSICH

BUSINESS MANAGER HOLLIS RADEMACHER

Managing Editor Don Casey

Associate Editor Pauline Bierke

City Editor Ron VanDoren

News Editor Bev Beckman

Copy Editor Pat Jaster

Sports Editor Will Shapira

Night Editor Night Staff

Assistant Night Editor Howie Seemann

Assistant Night Editor Myrna Schwartz

Night Sports Editor Carol Johnson

Wire Editor Phil Meyer

Linda Ascher

'One World' Theme Report Shows Of St. Paul Campus Yearbook Sales Brotherhood Week Up This Year

"One World" is the theme chosen for the St. Paul Campus observance of Brotherhood Week, Feb. 17 to 23.

The week will open with an annual banquet, Feb. 17 in St. Anthony Park Methodist Church.

The weekday program includes an afternoon coffee hour Feb. 19, in the St. Paul Campus Union, a dinner for foreign students in the living units that evening, and a showing of the prize-winning movie, "Cry, the Beloved Country," Feb. 20.

Brotherhood Week on St. Paul Campus will emphasize the oneness of man, according to Ann Snyder, Agriculture sophomore, general chairman of the event, and Mrs. Shirley Carlson, Congregational-Presbyterian Fellowship adviser.

More Gopher yearbooks already have been sold this school year than were sold by June of last year, it was reported to the Board of Publications at its meeting last night.

Gopher business manager Richard Thomas, Business junior, told the board that 2,416 books have been sold, compared with 2,375 last year.

He added, however, that the Gopher was running over its budget and that total sales of 2,600 would be needed for the publication to break even this year.

"Sales in recent weeks have been particularly good," Thomas said.

St. Paul Campus Judging Contests Close Tomorrow

The winter judging contests will end tomorrow on St. Paul Campus, and the winners of four divisions of judging will be named.

Meats will be judged at 9 a.m. in the Meat Shop, and crops will be judged at 1 p.m. in 101 Agronomy Building. Close to 140 men from the campus will compete.

Wednesday the agriculture students will hold an all-Ag stag chicken barbecue at 6 p.m. in the Livestock Pavilion. The dinner will cost \$1.25 and tickets may be obtained from Ag Club members. Tickets must be purchased by Monday.

The judging awards will be presented at the dinner, with the overall winner receiving a watch.

St. Paul Union Splash Party Set

A splash party will be held at 8 p.m. today in the pool of the Ag Gym on St. Paul Campus.

The party will feature a water polo match between the foresters and the agriculture engineers. The winners will present the game ball to one of the coeds present.

Admission is 25 cents per person, or 35 cents per couple.

The party is sponsored by the St. Paul Union Board of Governors.

Ticket Sales Will Open

Tickets will go on sale Wednesday for University Theater's production of Shakespeare's "Richard III." Mail orders now are being accepted in the Scott Hall lobby box office for the March production.

TRY-BUY PLAN
Rent A Typewriter —
First Month Rent Applies on Purchase.

"KIRK" 617 S.E. 14th Ave.
(3 Blocks from Campus)
FE. 2-9387

to Place a Daily Want Ad
Phone Extension 6217

The Cardinal Players Present . . .
"HARVEY"
That Rabbit's Back Again!
Adm. 65c and 75c
8:30 P.M. Fri. and Sat., Feb. 8-9
☆ ☆
NEWMAN HALL AUDITORIUM

Regional Bowling, Billiards Match Set

The Regional Bowling and Billiards match between the University and North Dakota Agricultural College will be held at 3 p.m. tomorrow in the Union Bowling Alleys and Billiards Room.

The University pocket billiards team members are: Richard Bowe, SLA junior; Dennis Hymanson, Walt Maynagh and Morrie Brownstein, SLA sophomores; Bob Diamond, Medical Technology freshman; Tom Heinke, Engineering senior.

Spectators are allowed. The event is sponsored by the Union Board of Governors.

Conservation in Mexico Lecture Topic Sunday

Conservation of the natural areas of Mexico and Central America will be the subject of a lecture to be given at 3 p.m. Sunday in the Museum of Natural History Auditorium. The speaker is Dwain W. Warner, assistant professor of zoology and Museum curator of ornithology.

The lecture is open to the public.

INTERVIEWS FOR CAREERS WITH HERCULES

Here's an opportunity for a career with one of the nation's most rapidly expanding chemical companies. If you will have a BS or MS degree in . . .

- CHEMISTRY
 - ENGINEERING
- Chemical Mechanical
Civil Electrical Mining

. . . a Hercules representative will be on the campus to discuss with you employment opportunities in . . .

- RESEARCH
- SALES
- PRODUCTION
- ENGINEERING

Arrangements for interviews should be made through your placement office.

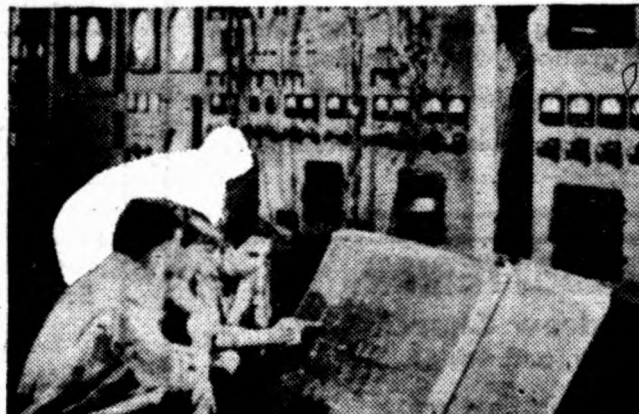
HERCULES POWDER COMPANY
INCORPORATED
Wilmington 99, Del.
FEB. 11



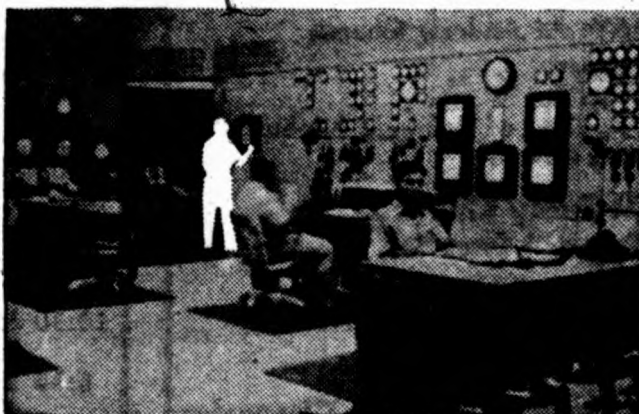
Metallurgical Instrumentation



Atomic Reactor Controls



Design, Manufacture, etc., of L&N Products



System Control for Utilities



Step into the Expanding Field of Instrumentation

Automatic control, or automation, or data reduction are all instrumentation, and offer some of the broadest and most satisfying careers available to today's engineers and scientists.

Atomic energy, iron and steel, aircraft and automobiles, chemicals and chinaware, petroleum and electric power are only a few of the many industries which need instruments. This need creates permanent opportunities in many of our operations, including research and development, product engineering, industrial engineering, production, inspection, market development and customer contacts.

The products with which you would be concerned include automatic, high-precision instruments for controlling, recording and indicating temperature, chemical concentration, radiation phenomena, frequency and load and many other conditions. For heat-treaters we make furnaces and process equipment. For the worker in science—whether student or researcher—we make both automatic and manual laboratory-type instruments, with which you may already be familiar.

The Company has about 3000 people—is one of the biggest in its field, yet is compact enough for you to be able to "follow the score." Its reputation for progressiveness in industrial relations, and for quality of product is world wide.

Wayne L. Besselman, our Coordinator of Technical Employment, will be on the campus on February 18, 1957 with information which he will cordially share about our very modern opportunities and rewards for engineers and scientists. Your placement bureau will arrange an appointment with Mr. Besselman, at your request.

LEEDS NORTHROP
Instruments Automatic Controls • Furnaces
4850 Stenton Ave., Philadelphia 44, Pa.

- | | | | |
|------------|--------------|---------------|--|
| Atlanta | Columbus | Los Angeles | Seattle |
| Boston | Denver | Milwaukee | St. Louis |
| Buffalo | Detroit | New York | Tulsa |
| Chicago | Hartford | Philadelphia | Integr. Leeds & Northrup, Birmingham, Eng. |
| Cincinnati | Indianapolis | Pittsburgh | |
| Cleveland | Houston | San Francisco | |

Official Daily Bulletin

Students and staff are urged to read the Official Daily Bulletin as they are answerable for notices that affect them. Please note that notices must be received by noon two days prior to publication. All notices should be sent to the Department of University Relations, 213 Administration. Except for certain notices of campus-wide importance, notices will be printed only once.

Vol. 55 Friday, Feb. 8, 1957 No. 95

ALL STAFF AND STUDENTS

- **Inter-campus Bus**
There will be no daytime service on the inter-campus bus on Lincoln's Birthday, Tuesday, Feb. 12; however, the evening bus will leave Minneapolis Campus at 10 p.m. and St. Paul Campus at 10:20 p.m.
- **Lecture**
Prof. Anselm Straus of the Department of Sociology, University of Chicago, will speak on "Problems in the Study of Identity" at 8:30 p.m. today, Feb. 8 in 55 Ford Hall. His talk is sponsored by the Department of Sociology and the Department of Concerts and Lectures and is open to the public without charge.
- **Cancellation of Courses**
Friday, Feb. 15 is the last day to cancel "with no grade," as provided by Senate regulations. Thereafter, cancellation is with F if the student is failing and with no grade only if he is passing at the time of cancellation. All cancellations must be officially approved.
- **Students Excused**
The following students are participants in an approved University activity, Red River Valley Debate Tournament at Fargo-Moorhead North Dakota Agricultural College, on Feb. 7, 8, and 9. These students should consult with their instructors regarding work required in the classes they have missed. In accordance with the policy adopted by the Senate on Nov. 17, 1949, instructors should permit students to make up the work in a customary manner. SLA—Virginia Elaine Boone, Robert Rollie, Wayne Anderson, Frank Levine, Steve Garland; OT—Jackie Evjen.
- **Exams in Physiological Chemistry**
The written preliminary examination for graduate students with a major or minor in physiological chemistry will be given at 1 p.m. Feb. 19 and 20. The examination will require both afternoons. All students who plan to take this examination should leave their names at the

- departmental office, 227 Millard Hall.
- **Spring Quarter Registration Dates**
Students in all colleges (except dentistry, law, medicine, and veterinary students who are registered for the year) should obtain material and register for spring quarter during the period specified for their college.
Registration permits (IBM name cards) will be issued at the college office with registration material except for graduate students whose name cards will be assembled with their material when they turn in their registration blanks at the Office of Admissions and Records. Agriculture, forestry, and home economics students should call for their material at their post office boxes beginning Feb. 25.
- **Registration Dates**
AGRICULTURE, FORESTRY, HOME ECONOMICS
Seniors, Feb. 25, 26
Juniors, Feb. 27, 28
Sophomores, March 1, 4, 5
Freshmen, Special Students, March 6 to 14
BUSINESS ADMINISTRATION
Issue of Material, Feb. 25
Tally, Feb. 26, 27
DENTAL HYGIENE
Feb. 25, 26, 27
EDUCATION
Dates same as for Science, Literature, and Arts except that Education Tally will begin Feb. 25.
GENERAL COLLEGE
Registration dates:
Tuesday, Feb. 26 (No General College classes this day)
Saturday, March 2 (8 a.m. to 5 p.m.)
Students registering this day will turn in material to Admissions and Records on Monday, March 4)
March 4 to 8
Returning Students March 11 to 22
Appointments for Feb. 26 issued Feb. 19, 20
Appointments for March 2 issued Feb. 19 to 27
GRADUATE SCHOOL
Feb. 25 to April 5

- **MEDICAL TECHNOLOGY**
Feb. 25 to March 8
MORTUARY SCIENCE
Feb. 25, 26, 27
NURSING
Feb. 25 to March 8
OCCUPATIONAL THERAPY
Feb. 25 to March 8
PHARMACY
Feb. 25 to March 8
PHYSICAL THERAPY
Feb. 25 to March 8
PUBLIC HEALTH
Feb. 25 to March 8
SCIENCE, LITERATURE, AND THE ARTS
Issue of material starts Feb. 25
Tally starts Feb. 27
Students should complete registration by March 14 because advisers generally will not be available after that date.
- **TECHNOLOGY, INSTITUTE OF**
Feb. 25 to March 4
Enrolling numbers will be required during early registration. The numbers were issued on small green cards. This numbered card along with the regular IBM card (registration permit) will be needed. The registration permit will be obtained at the registration room where you originate your registration and at the time that you register. Be sure to bring enrolling card when you come to register.
Students in the second, third, fourth or fifth year who are changing their one-year plan must consult their adviser before the registration period. As in previous quarters, the third, fourth, and fifth five-year combined business-engineering students and work study students will register Feb. 21. The enrolling schedule for the early registration period is as follows: (A detailed schedule of numbers will be found on the bulletin boards in all IT buildings.)
Feb. 25 (1-105)
Feb. 26 (106-240)
Feb. 27 (241-380)
Feb. 28 (381-520)
March 1 (521-All numbers)
March 4 Completion of tallying, but no advisers (classifiers in 136 Engineering)
- **UNIVERSITY COLLEGE**
Dates same as for Science, Literature, and the Arts
TEACHERS TAKING SATURDAY CLASSES ONLY
May also register on Saturday, April 6 at 206 Burton
DENTISTRY, LAW, MEDICINE, VETERINARY MEDICINE
Students in these colleges who have not already registered for spring quar-

- ter should do so on March 28 and 29.
- **SLA Tally Slips**
Students in all colleges who will be taking courses that require tally at Johnston Hall must obtain an SLA Tally Reservation Slip. The SLA Tally Slips will be issued as follows:
SLA STUDENTS—Tuesday, Feb. 19, at 208 Johnston Hall.
EDUCATION STUDENTS—Tuesday, Feb. 19 at 206 Burton Hall.
STUDENTS IN OTHER COLLEGES—SLA Tally Slips for students in other colleges will be issued at the students college office during registrations to those students whose registration blanks show them to be taking courses requiring tally at Johnston Hall. The slips furnished each college will all be in the same proportion with respect to time of appointment so that each student in every college will have the same tally opportunity as SLA students.
- **Payments of Fees**
Except for students in the Graduate School, spring quarter fees are due Thursday, March 21. Fees for students in the Graduate School are due April 5. Students who return spring quarter who have not registered and paid fees in accordance with this notice will incur a late fee.
- **Scholarships for Women**
Women students wishing to be considered for financial assistance for the spring quarter on the basis of scholarship, need and personal promise are invited to register before Feb. 15. Those applying will be considered for scholarships offered by Delta Delta Delta, Faculty Women's Club, Twin City Panhellenic, P.E.O. and other available funds.
A special meeting for all such applicants will be held in 107 Nicholson Hall at 9:30 a.m. tomorrow, Feb. 9 and 306 Johnston Hall at 11:30 a.m. Thursday, Feb. 14.
- **Final Oral Examination: Walker**
The final oral examination of Virgil Roy Walker, candidate for the doctor's degree, major education, minor educational psychology, will be held at 10:30 a.m. today, Feb. 8 in 224 Burton Hall. Examining committee: Profs. Doman, chairman, Stecklein, Lane, Johnson, and Wakefield.
- **Final Oral Examination: Frits**
The final oral examination of Henry Eugene Frits, candidate for the doctor's degree, major history, minor speech, will be held at 3:30 p.m. today, Feb. 8 in the Ford Room, Ford Hall. Examining committee: Profs. Osgood, chairman, Locher, Smith, Spencer, and

- Bowditch.
- **Final Oral Examination: Cherrig-Jiann Shiu**
The final oral examination of Cherrig-Jiann Shiu, candidate for the doctor's degree, major forestry, minor botany, will be held at 2:30 p.m. Monday, Feb. 11 in 202 Green Hall. Examining committee: Profs. Brown, chairman, Dahl, Caldwell, Ownby, Hart.
- **LECTURE**
• **Chemistry Lecture**
Monday, Feb. 11 Dr. Thomas S. Wheeler, professor of chemistry, University College, Dublin, Ireland, will present a lecture on "Chemistry of Flavones and Related Compounds" in 113 Snyder Hall, St. Paul Campus.

U Rovers Club Plan Sleighride, Dance at Ranch

The Minnesota Rovers will give a sleighride at Eaton's Ranch with a dance to follow at 7 p.m. tomorrow in the Ranch House. The cost is 50 cents per person. Interested students may sign up in the Rover office, Union basement. Persons attending will meet at the Rover office at 7 p.m. Saturday for transportation to the ranch. The event is sponsored by the Union Board of Governors.

Call Extension 6217 for Daily Want Ads

Religious Services

FIRST CONGREGATIONAL CHURCH
5th Street and 8th Ave. S.E.
Sunday, February 10, 1957
9:00 A.M.—College discussion group
10:30 Church and Church School
"Crumbling Walls," Dr. Wesley C. Ewert
Preaching

PILGRIM FOUNDATION
1700 4th Street S. E.
6:30 P.M.—Supper
7:10 P.M.—Worship
7:30 P.M.—Program, "Basic Core of Religion,"
Speaker, Rev. Heuser

BETHLEHEM BAPTIST CHURCH
8th St. and 13th Ave. So.
FRIDAY—7:30 P.M.—Young Adult Fellowship
SUNDAY—9:45 A.M.—College Class
10:50 A.M.—Morning Worship—"The Grace of God," Pastor Eric N. Lindholm
7:00 P.M.—Evening Service—"The Foolishness of Preaching," Pastor Eric N. Lindholm
8:30 P.M.—Youth Fellowship
Free bus leaves Church and Washington corner at 9:30 a.m. and 6:30 p.m.

FIRST UNITARIAN SOCIETY
11:00 A.M.—"A Look at the Ivory Tower"
Mr. Storm
10:00 A.M.—Adult Forum—"Reflections on Brotherhood: Free Negroes in the United States Prior to 1863," J. Nathaniel Smith
900 Mount Curve Ave.

Lutheran Student Association
1813 University Ave. S.E.
SUNDAY EVENING CLUB
5:00 P.M.—Seminar at University Y.M.C.A.
Topic—"The Christian Doctor,"
Speaker, Dr. Robert Quello, Minneapolis
Physician and Surgeon
6:00 P.M.—Supper at University Y.M.C.A.
7:00 P.M.—Group Meeting
7:15 P.M.—Seminars
8:15 P.M.—Open House at the Lutheran Student House

UNIVERSITY BAPTIST CHURCH
University and Thirteenth Ave. S.E.
The Rev. John Saunders Bone, Pastor
9:45 A.M.—Hot Coffee Club
"Characteristics of a Christian Life,"
Lead by Mr. Vernon Jensen
11:00 A.M.—Morning Worship, "The Church And Integration," Mr. John Bone
6:00 P.M.—Roger Williams Fellowship, Supper
6:30 P.M.—Trip to Anoka State Mental Hospital

CHRISTIAN SCIENCE
FIFTH CHURCH OF CHRIST, SCIENTIST
University & 12th Ave. S.E.
Sunday School for students
Under 20 years 10:45 A.M.
Sunday Services (Nursery for pre-school children) 10:45 A.M.
Wednesday Evening Meeting with voluntary testimonies of healing 8 P.M.
Reading Room at 1307 Fourth St. S.E. for studying the Bible and authorized Christian Science literature. Monday thru Saturday 10 A.M. - 5 P.M.

Grace Lutheran University Church
Harvard and Delaware Sts. S.E.
Vincent L. Hawkinson, Pastor
9:30 A.M.—Morning Worship
10:45 A.M.—Morning Worship
• Communion Service first Sunday of every month
• Wed., 7:30 P.M.—Choir Rehearsal

University Lutheran Church of Hope
13th Ave. and 6th St. S.E.
Arndt L. Halvorson, Pastor
8:45, 10:00, 11:15 A.M. Morning Worship
Sunday 10:00 A.M.—Student Bible Class
• Holy Communion—First and Third Sundays
Thursday 7:30 P.M.—Choir Rehearsal

PRESBYTERIAN
Andrew Church
8th Ave. and 4th St. S.E.
11:00 A.M.—Worship Service
University Westminster Fellowship
SUNDAY: At Andrew Church
5:30 P.M.—Supper
6:30 P.M.—Worship
7:00 A.M.—"A View of Reinhold Niebuhr,"
Rev. Owen Dukelow

Bethany Church
Oak and Essex S.E.
9:30 A.M.—College Bible Class
11:00 A.M.—"Do You Value Your Nation?"
Dr. A. O. Carlson
7:45 P.M.—Film—"Seventeen"
Bethany Forum Retreat at Clearwater
Friday Through Sunday

WESLEY FOUNDATION and FIRST METHODIST CHURCH
1209 4th Street S.E.
11:00 A.M.—Morning Worship—"Very God and Very Man," Pastor Sweet Preaching
5:00 P.M.—Fellowship Discussion Group at the Parsonage
No Other Sunday Meetings

UNIVERSITY LUTHERAN CHAPEL AND CENTER
1101 University Avenue S.E.
R. C. Beisel, Pastor
8:00 A.M.—Morning Worship
9:00 A.M.—Sunday School at University Village.
9:15 A.M.—Bible Discussion, "Sharing In Reconciliation"
9:30 Sunday School at the Center.
10:30 Worship Services—"Faithfulness And Its Consequences"—Confirmation
5:30 P.M.—Gamma Delta Supper Meeting.
Topic: "Comparative Religious Education In Europe"—Speaker, Dr. W. A. Poehler

What's Doing

Today

FOUNDATIONS
Presbyterian Student Center lunch—12:30 p.m. Bible study—12:30 p.m. Topic: "John." Open house—after ballet and hockey game. 1628 Fourth St. S.E.

Minnesota Christian Fellowship prayer—7:55 a.m.—4 Folwell Hall and 315 Union. Bible study—12:30 p.m.—126 Johnston. Leader: John Gustafson. Topic: "Romans."

Lutheran Student Foundation devotions—8 a.m. Chapel—12:55 p.m. Party—7:30 p.m. 1813 University Ave. S.E.

Newman Foundation discussions—10:30 a.m. Inquiry class—12:30 p.m. Medical seminar—7:30 p.m. Play—8:30 p.m. 1701 University Ave. S.E.

Pilgrim Foundation chapel—8 a.m. Hot lunch—11:30 a.m. 1700 Fourth St. S.E.

Roger Williams Foundation lunch—11:30 a.m. 1219 University Ave. S.E.

Covenant Club Bible study—2:30 p.m.—346 Union. Speaker: the Rev. Clarence Agard, Salem Covenant Church. Topic: "Hebrews 11."

Gamma Delta roller skating party—7 p.m. 1101 University Ave. S.E.

CLUBS

YWCA program—12:30 p.m.—215 Union.

El Mundo Hispanic dance—8 to 12 p.m.—YMCA Dining Room. Admission: 50 cents.

Saturday

Cosmopolitan Club and World Federalists Club panel—8 p.m.—343 Union. Topic: "Why World Federalism."

St. Paul Campus

Country Dance Group—8 p.m.—Gopher Hole.

Sunday

Lutheran Student Foundation program—5 p.m. Speaker: Dr. Robert Quello. Supper—6 p.m. Seminars—7 p.m. 1425 University Ave. S.E. Open house—8:15 p.m. 813 University Ave. S.E.

Newman Foundation open house—7:30 p.m. 1701 University Ave. S.E.

St. Paul Campus

Pilgrim Foundation supper—6:30 p.m. Worship—7:10 p.m. Speaker—7:30 p.m. Speaker: Dr. Houser. Topic: "Basic Core of Religions." 1700 Fourth St. S.E.

Presbyterian Student Center seminars—4:30 p.m. Supper—5:30 p.m. Meeting—6:30 p.m. Speaker: the Rev. Owen Dukelow. Topic: "A View of Reinhold Niebuhr." 1628 Fourth St. S.E.

Roger Williams Fellowship Hot Coffee Club—9:30 a.m. Worship service—11 a.m. Sunday Dinner Club—noon. 1219 University Ave. S.E.

Gamma Delta meeting—5:30 p.m. Speaker: Dr. W. A. Poehler, president of Concordia College, St. Paul. Topic: "Comparative Religious Education in Europe."

Tri-U visit to First Unitarian Society. Adult discussion—10 a.m. Church service—11 a.m. Coffee hour—12:15 p.m. 900 Mt. Curve Ave.

St. Paul Campus

Lutheran Student Association supper—6 p.m. Program—6:45 p.m. Speaker: the Rev. Bernt Opsal, president, Lutheran Bible Institute. Topic: "Between You and God." Seminars—7:45 p.m.

Congregational-Presbyterian Fellowship supper—6 p.m. Meeting—7:30 p.m. Speaker: the Rev. Maynard Iverson, Bethlehem Lutheran Church. Topic: "The World Awakes." St. Anthony Park Congregational Church. Congregational-Presbyterian-Lutheran Graduate Club meeting—9 p.m. Topic: "A Christian in a Competitive Society." Apt. 6, 1455 Fulham.

Monday

Westminster Fellowship meeting—7 p.m. Presbyterian Student House, 1628 Fourth St. S.E.

St. Paul Campus

Camera Club—6:30 p.m.—Union West Lounge.

YMCA—7:15 p.m.—7 Union. **Dance Classes**—7 p.m.—Union East and West Corral.

Plant Industry meeting—7:30 p.m.—Union West Lounge.

Semi-formal Decorations Committee—7 p.m.—206 Union.

St. Paul Campus

Tuesday

LSA Bible study—9 p.m. St. Anthony Park Lutheran Church.

Wednesday

LSA Bible study—10 p.m.—AGR, Brewster, Clovia, Farmhouse, GOB, IMC.

Congregational-Presbyterian Fellowship Bible study—10 p.m.—Farmhouse. Topic: "Acts."

Toastmistress—5 p.m.—7 Union.

Oxford U Church Vicar to Present Talk on Psychology

The Rev. Roy S. Lee, vicar of University Church of St. Mary the Virgin, Oxford, England, will speak at 8 p.m. Monday in the Museum of Natural History Auditorium.

Dr. Lee will consider "The Contribution of Psychology to Religion." Open to the public without charge, the lecture is sponsored by the Departments of Psychology, Psychiatry and Neurology and Concerts and Lectures.

Dr. Lee is primarily concerned with the application of Freudian psychoanalysis to the understanding of religion and its practice. He was awarded a doctor of philosophy degree by Oxford University for his book "Freud and Christianity."

He also will speak at 7 p.m. Wednesday at the Canterbury Club, 1015 Seventh St. S.E.

Prof. Named President Of Neurosurgical Group

Dr. Lyle A. French, associate professor of neurosurgery, has been named president of the Neurosurgical Society of America.

Naval Yearbook Planned

The 1957 "Viking," yearbook of the Naval ROTC, is now being compiled and will be distributed to midshipmen June 1. The book will be dedicated to Capt. Frank Bruner.

EUROPE

20 Countries, 70 Days
 Summer '57—\$1325, All Expenses
 Europe for Collegians
 255 Sequoia, Pasadena, California

To Mend a Broken Heart



Raymond's Ltd. features the very finest in . . .

SPORT SHIRTS

(distinctively designed and styled by Adrian, Mr. John, D'Angelo)

also a complete selection of

TIES

(designed by the world's most famous creators)

Or . . . just come in and browse around. See our new spring collections of Alpaca Cashmere Dress Shirts.

Raymond's LTD.

THE CURTIS HOTEL, MINNEAPOLIS

...CANADIAN TRIUMPH...
 Joy Carmody, Washington Star

NATIONAL BALLET OF CANADA

Céline FRANCA • David ADAMS • Lois SMITH
 Lillian JARVIS • Angela LEIGH • Betty POPE • Colleen KENNEY
 Ray MOLLER • Earl KRAUL • Grant STRATE • Glenn GIBSON

COMPANY OF 70 WITH FULL ORCHESTRA
 Musical Director: GEORGE CRUM

Friday, February 8 (Sold Out)
 Sat., Feb. 9, 2:00 p.m. \$1, \$1.50, \$2, \$2.50, \$3.00
 Sat., Feb. 9, 8:30 p.m. \$1.50, \$2.50, \$3.00, \$3.50

Ticket Office: 105 Northrop Auditorium, U of M

Northrop Memorial Auditorium

University of Minnesota

Bendix

Will be on campus
 February 13, 14

for placement interviews in the following areas

- AIRCRAFT ENGINE CONTROLS
- GUIDED MISSILES—COMPLETE DEVELOPMENT
- AIRCRAFT LANDING GEAR
- AUTOMOTIVE COMPONENTS

MECHANICAL
 ELECTRONIC
 AERONAUTICAL
 CIVIL
 METALLURGICAL

ENGINEERS

Bendix Products Division, Bendix Aviation Corporation
 South Bend, Indiana

HERE IS THE THIRD TIE-BREAKER IN
OLD GOLD'S

TANGLE SCHOOLS

PUZZLES

TIE-BREAKING PUZZLE NO. 3



CLUE: This West Coast state university, chartered in 1868, has campuses at various locations throughout the state. Degrees in oceanography are among those conferred by this institution.

CLUE: Named for its founder, who also founded the Western Union Telegraph Company, this eastern university has many schools, among which is one for hotel administration.

ANSWER 1 _____

ANSWER 2 _____

Name _____

Address _____

City _____ State _____

College _____

Note: Above puzzle requires 2 answers.
Hold answers for mailing instructions.

All participants who completed the initial set of twenty-four puzzles correctly are required to solve a series of eight tie-breakers, in order to compete for the prizes in the tie.

Remember—first prize is a tour for two around the world and there are 85 other valuable prizes.



**NO OTHER CIGARETTE
CAN MATCH THE TASTE
OF TODAY'S
OLD GOLDS**

Regulars—Kings—or Filters,
today's Old Golds taste terrific ...
thanks to an exclusive blend of the finest
nature-ripened tobaccos ... so rich ...
so light ... so golden bright!

Copyright 1957,
Harry H. Hollister

SCR Hears Religion Credit Report by Curriculum Group

The Student Council of Religion (SCR) yesterday heard a report from its Curriculum Committee which has been studying the possibility of instituting religion courses for credit.

Winn Mott, SLA sophomore, said that the group met last week with William B. Lockhart, dean of the Law School, to discuss the legal aspects of the plan. The dean named two possibilities which would be relatively free of legal complications:

- Comparative religion courses.
- Courses taught by instructors of nearby denominational colleges.

SCR also voted in a policy for financial supervision of religious foundational funds. The policy states that foundations with at least one full time, qualified adviser may handle their funds through a bank or public account, the Fraternity Purchasing Assn. or Student Activities Bureau.

Tom Rieke, Law sophomore, presented a springboard proposal under which the new Religion in Life Week Committee can function when it begins work March 1. The outline was drawn up by subcommittee members representing Hillel Foundation, Minnesota Christian Fellowship and Newman Club.

TV ...

(Continued from page 1)

offer no courses in science, and that he didn't wonder why the United States was lagging behind in engineering and science.

"HOW CAN YOU produce scientists when you don't let them know anything about the subject in high school?" he asked.

"One city hired a brilliant and capable young scientist to teach over TV," he said. "This one man taught over 140,000 students in Pittsburgh and had all his students engrossed in the subject. Since the teacher himself does much to motivate his students, we can insure high learning standards by hiring the best educators in their fields."

Club Sets Coffee Hour

The German Club will hold a coffee hour from 3:20 to 5:30 p.m. Wednesday in the Union Women's Lounge.



Performing the Scottish sword dance is Canadian national champion Marian Neilson, dietetic intern, who will take part in the nurses carnival from 7 p.m. to midnight today in Powell Hall.

**PATRONIZE YOUR
ADVERTISERS**

Bishop's

CAMPUS FASHIONS

322 14th Ave. S.E.

FR. 1-1173

Open Thursday Evenings
Till 8:30

HOOP DEE DOO

Presents

TEDDY GUZMAN
MODERN JAZZ QUARTET

Dancing Nightly
at the

HOOPE DEE DOO

1607 Nicollet

You Must Be 21

UNION JAZZ WORKSHOP

PRESENTS

**SUNDAY
JAZZ SESSION**

Feb. 10

2:00-6:00 P.M.

Union Main Ballroom

Sponsored by Union Board of Governors

FLYING CLUB

Meeting and Night Flying Tonight

Friday, Feb. 8 at 7 p.m.

Where — at the Club Lounge

Located at the University

Anoka County Airport, County Rd. J

— BE SURE TO COME —

Flying Club Office
349 Coffman Union

**Les Brown's
in Town**



***Dancing from 9:00 to 1:00
a.m. in the Union Main Ballroom.

***Buy your tickets now. \$1.50
per person at the Union Ticket
Office.

For Your dancing pleasure the Union Board of Governors brings you the No. 1 Band in America — Les Brown and his Band of Renown. Saturday, Feb. 16, at the "Sentimental Journey" Dance.

Win \$50 — Watch for Les Brown ad in Ivory Tower!



Even When You're Gone I'll Remember
You Through the GOPHER Yearbook.

YM-YW Schedule Study Conference

A two-session YM-YWCA study conference on "The Individual in Liberal Education" will be held at 6 p.m. Monday through Tuesday afternoon at Kingswood Camp, Wayzata.

The subject for Monday night will be "Liberal Education and My Education." Tuesday the group will discuss "Christian Values in Liberal Education."

Bernie Brow, associate director of Wesley Foundation, will lead the conference.

Ski Club to Make Trip To Wisconsin Tomorrow

The Ski Club will take a trip tomorrow to Deepwood, Wis. Departure is set for 7:30 a.m. from Comstock Hall.

All interested persons may sign up for the one-day trip at the Ski Club office, Union basement.

Library to Get Memorial Fund

The James T. Hillhouse Memorial Fund will be presented to the University Library in a meeting at 4 p.m. today in the Arthur Upson Room.

Prof. Hillhouse was the assistant chairman of the English Department from 1948 until his death last Dec. 10.

The purpose of the fund is to purchase books on 18th century English literature.

KUOM Will Air 3 Danish Works

Knudage Riisager's "Little Overture" for String Orchestra, his Sonata for Violin, Cello and Piano Op. 55a, and his Concertino for Trumpet and Strings will be broadcast over KUOM at 2:30 p.m. Monday.

The Danish composer's music is part of the Fifth Annual Scandinavian Music Series, sponsored by KUOM in collaboration with the Scandinavian Department.

Journalist Club To Honor Prof

The Asian Journalist Club will hold a reception in honor of Prof. and Mrs. Raymond B. Nixon at 7:30 p.m. tomorrow in 320 Union. They will tour the African-Asian countries in the spring. Nixon is a professor of journalism.

Robert W. Smith, editorial page staff writer of the Minneapolis Star and Tribune, will speak on "Obstacles in the Relations Between the East and West."

NOW PLAYING
IRV WILLIAMS TRIO
EVERY WEEK-END
LEE & EDDIES
412 CEDAR

HERB PILHOFFER TRIO

Featured Nightly
Easy Listening in
Modern Jazz
at

HERB'S BAR

Marquette at 4th
You Must Be 21

PIZZA

Our Specialty
We serve delicious Italian and American foods. All orders can be prepared to take out.
VENICE Cafe
726 1st Ave. N.
Open 7 Nites Each Week
Til 2:30 A.M.



"For the Best in Entertainment
Read the Daily Entertainment Guide"

of
OLD SOUTHERN BARBEQUE
700 LYNDALE
ITS
JAZZ and **RIBS**
"THE INTERPRETERS"
4-7 P.M.
EVERY SUNDAY
(crazy!)

Campus Fine Arts
FR. 1-2492
13TH & 4TH ST. S.E.
It has Warm Human Comedy...
It has Powerful Drama...
It has Suspense and Action...
It's Filled with Entertainment.
IT HAS ALL THE INGREDIENTS
OF A GREAT MOTION PICTURE
GARY COOPER
FRIENDLY PERSUASION
IN GLORIOUS COLOR

ALL QUIET ON THE WESTERN FRONT
Starring LEW AYRES
Academy Award Winner

EAST HENNEPIN CAFE
FOR
GOOD FOOD and REFRESHMENTS
501 E. Hennepin FE. 3-3744

If You Are 21 Years of Age or Over

ENJOY A PROPERLY DISPENSED SCHOONER AND OUR DELICIOUS HAMBURGERS ALSO FRENCH FRIES —AT
Manning's Cafe
2200 Como Ave. S.E.

PROM "ON THE MIDWAY"
COMING NEXT FRIDAY
NITE FEB. 15TH
ONE NITE ONLY!
THE 4 FRESHMEN
AMERICA'S SENSATIONAL VOCAL-INSTRUMENTAL GROUP
WITH JULES HERMAN'S ORCH. ADM. 1.65 TOTAL
Call MI. 6-6121 For Booths

SPONSORED BY UNION BOARD OF GOVERNORS
SQUARE DANCE
Ken Stilwell Calling
Students 10c
Faculty 35c
Others 50c
TONIGHT 8-11, UNION MAIN BALLROOM

I'M MEETING THE GANG AT...
SLEIZER'S Club 21
21 So. 8th St. — And Be Sure You're 21
SPARKLING BEVERAGES
A NICE CROWD AND DELICIOUS FOOD
FOR LATE SNACKS
WE SUGGEST OUR...


BAR-B-Q RIBS **FABULOUS FOOD** **FRESH SHRIMP**
See Tim—Your Host 700 Lyndale Hours—6 P.M. - 3 A.M.
OLD SOUTHERN BARBECUE
"THE INTERPRETERS" Every Weekend
Jazz at Its Best
BROILED LOBSTER **SWINGING SOUNDS** **SIZZLING STEAK**

A BIG, BIG SHOW
starring...

BEULAH BRYANT
(MSM Recording Star and Star of Movies)
PLUS
JIMMY ROGERS
(Drummer Marathon Winner)
PLUS
Princess Lola DuComge
(Most Sensational Exotic Dancer Ever)
ID Cards Will be Demanded at Door
KEY CLUB
1325 Washington South

Now!
Open Bowling Saturday & Sunday

Sat. 9 A.M. to 11:30 P.M.
Sun. 2 P.M. to 10 P.M.
Ever had your weekend bowling plans ruined by signs saying "League Bowling Only?" Well here's your chance to enjoy fine open bowling every SATURDAY and SUNDAY. Call ext. 138 for reservations.
Coffman Bowling Alleys

Road Trip Could Decide Cagers' Fate

By Phil Lee

It took Ulysses 20 years to come out of his war, but it's only going to take the Gopher basketball team until Monday night to find out where it stands in the Big Ten basketball conflict.

TRYING TO MAKE it two in a row over Michigan will be the first objective, then a follow-up Monday night in the Indiana cracker-box.

Fortunately, the Gopher reserve bench seems to have "found" itself, based on the performances of center Warren Jeppesen and guard Jim Stoltman. In addition, Whitey Johnson has taken over as number one guard.

A pair of wins would put the Gophers in good shape, what with four of the remaining six at home after Monday.

They also could throw the title race into a state of confusion.

CONFUSION is the best word to describe the race even now, and you can't count the Gophers out of it. Five clubs have lost two games, one less than the Gophers, and Minnesota gets a crack at all of them.

But they won't have to do it alone. For instance, once proud but now struggling Ohio State journeys to Indiana Saturday. Both clubs have two losses.

Purdue, also one of the two-loss clubs, takes on underdog Iowa at Iowa City, a spot where the Hawks are always dangerous. And Bon Salle-less Illinois meets resurgent Michigan State at East Lansing.

WINS BY the Gophers, MSU, Indiana and Iowa, all conceivable possibilities, would leave Indiana alone atop

the heap with two losses, with all other contenders (six of them!) following close behind.

But that's only half of it. Monday night could really bring about chaos if the Gophers come through against Indiana.

The Illini should be a shoo-in at home against Northwestern, and the same goes for Michigan against Wisconsin.

SO EVEN if Purdue beats Iowa Saturday, MSU could knock them off Monday. It's possible, therefore, that either six or seven teams could be tied for first place next Tuesday morning!

And if the Gophers can come through with a pair of wins, the Big Ten race could enter the last one-third of the race more muddled than ever.

Sophs Play Big Role in U Track

By Jim Engfer

Last Saturday six Sophomores scored 27 of the points Minnesota earned in its 56 to 58 track loss to Northwestern. According to coach Jim Kelly this fact may be more important than it looks on the surface.

THE SIX NEW men who showed so well in their first Big Ten competition were Doug Helm, Bud Edelen, Bob Mittlestadt, Bob Blak-

ley, Bill White and Bruce Halgren.

A number of times in recent years, says Kelly, Minnesota has had a good freshman team, only to see it disappear the following season. This was due to various reasons including scholastic difficulties, financial problems, losses to other sports and just a failure to produce as sophomores.

"This year though," Kelly says, "we have every good prospect from last year's frosh group running for the varsity."

THIS FACT was very much in evidence Saturday as the sophs accounted for three first places, two seconds and a third.

Leading the yearlings in scoring was Helm who won the high hurdle event, grabbed a second in the lows and a third in the pole vault.

Mittlestadt won the half mile and anchored the second place relay team which was barely nosed out by the Wildcats.

Running with Mittlestadt were Halgren and White. A junior, Don Schimmel, was fourth man on the relay.

EDELEN, WHO broke a record almost every time he ran during the cross-country season, kept up his winning ways with a decisive win in the two-mile run.

Blakley, a standout fullback in football last season, rounded out the sophs' scoring with a second place in the shot. His 51 foot plus heave was excellent for a first year man, Kelly claims.

Tomorrow the Minnesota sophs will face another big test when they meet a tough Iowa State team. Assistant coach Bob Anderson thinks the affair will be an exciting one "where winning or losing the meet could hinge upon every event."

The meet will be held at the indoor sports arena with the field events slated to start at 2:30 p.m. and the running events at 3 p.m. A winter quarter athletic card gets you in.

'Quick' Iowa To Meet U Swimmers

By Don Besky

The Gopher swimmers entertain the Hawkeyes of Iowa, who are paced by a star diver named Quick and a free styler who is also quick, in a dual swim meet tomorrow at Cooke Hall. The diver would be John (Jake) Quick while the quick free styler is Garry Morris, national 220 yd. free style champion.

BESIDES THE 220, Morris also will swim the 50-yard and 100-yard free styles along with the 400-yard relay.

Other star Iowa swimmers who will be trying to derail Minnesota from the winning track (one straight) include free styler Earl Ellis and versatile Kim Austin who swims the medley, butterfly, breast-stroke and relay.

Gopher coach Niels Thorpe has been pleased with the team's progress in practice this week and noted in particular the fine progress shown by Carl Allison in the medley event.

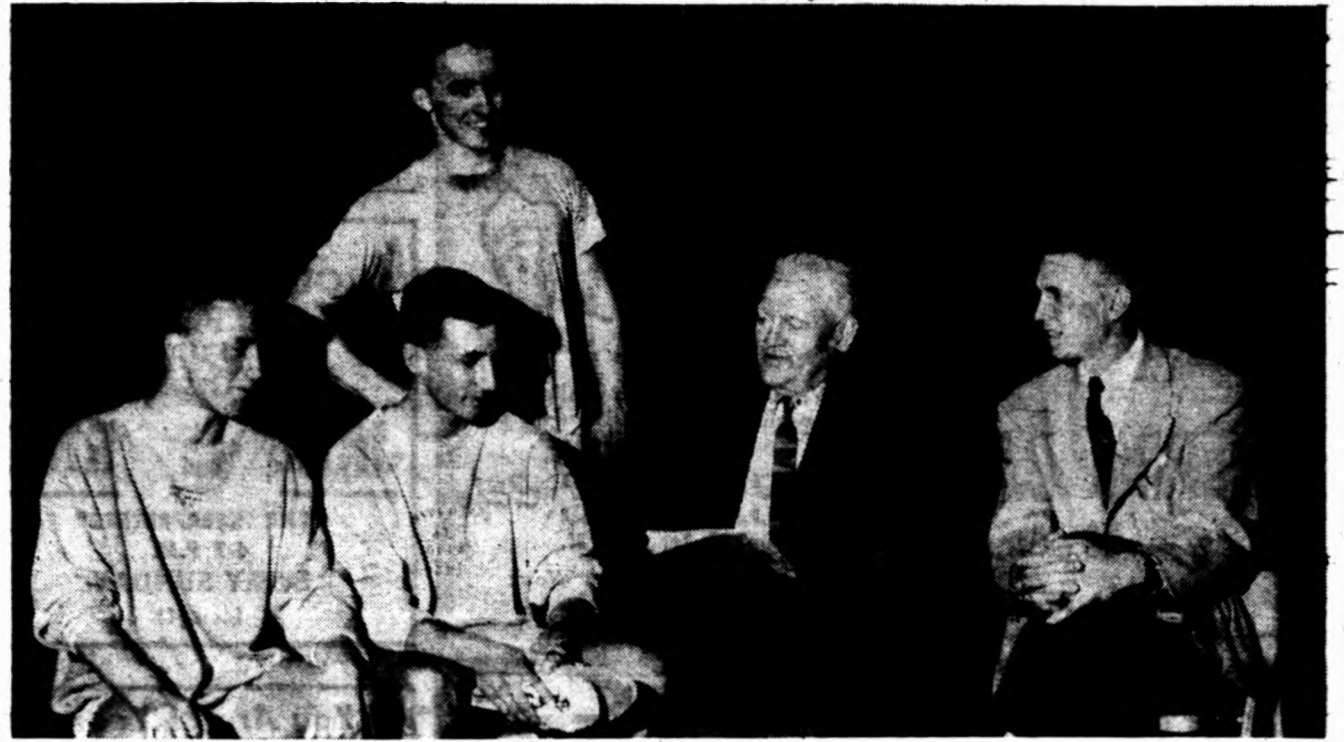
FOLLOWING THE Iowa meet the Gophers will travel to Columbus, Ohio, for a meet Monday against the defending NCAA champs, Ohio State.

Concerning the Buckeyes, Thorpe says, "The Buckeyes are loaded with stars from the 1956 Olympics and should be a strong threat to repeat their position as national champs."

Lakers to Host Ft. Wayne Here

The Minneapolis Lakers host the Ft. Wayne Pistons tomorrow night at 8:30 p.m. in the Minneapolis Auditorium.

In their last outing here Wednesday night, the Lakers put down the Philadelphia Warriors 101 to 100. They're currently battling for a playoff spot in the NBA's Western Division, trailing Ft. Wayne, St. Louis and Rochester.



Plotting track strategy to use against Iowa State tomorrow are three of the Gophers' sensational soph crop: Bruce Halgren, Bob Mittlestadt and Doug Helm (left to right). Giving the instructions are coach Jim Kelly and assistant coach Bob Anderson. Iowa State, always tough on Minnesota, should give these tracksters plenty to worry about come 2:30 p.m. in the Fieldhouse.

Sigma Chi Nips Betas; In Semis

Sigma Chi, Sigma Alpha Epsilon and Phi Epsilon Pi moved into the championship semifinals of the I-M academic fraternity basketball league last night. Lambda Chi Alpha drew the first round bye.

Sigma Chi defeated Beta Theta Pi 32 to 25 in the closest of the three games. The Sigs jumped to an early lead and held a 21 to 15 margin after three quarters.

The Betas, beginning to find the range, pulled up to 21 to 20, but six consecutive points by Bob Clarkson pulled the Sigs out of danger.

Phi Epsilon Pi downed Kappa Sigma 39 to 25 after taking an 18 to 9 lead at halftime. Dave Buegan led the winners with 11 points, followed by Mike Goodman's eight.

Sigma Alpha Epsilon's Lions jumped off to a 32 to 13 lead and were never headed as they overwhelmed Psi Upsilon, 69 to 36. Phil Vandermyde's 22 points paced the winners. Dick Bracher had 16.

Sports Scoping

By CHUCK ARONSON
Assistant Sports Editor

It's a difficult task to remove anyone from his favorite armchair on Saturday afternoons, especially with all the free entertainment provided by the television set. But there's always a chance that a few students will have some free time tomorrow.

If you have a couple of free hours tomorrow afternoon about 2 p.m. it will be worthwhile to take in Minnesota's wrestlers at Williams Arena in their final home appearance this season against Cornell College. Unfortunately, the matmen have all their home meets early in the season and so appreciation of a fine team effort can never be made in person when the squad really needs support.

The wrestlers have compiled the best record of any Gopher winter sports team thus far. On rare occasions do more than 500 persons attend such an event. The exception was a couple of weeks ago when Minnesota's wrestling hotbed, Anoka, drew 2,200 fans for a meet against Iowa State Teachers.

The grapplers won that affair and have taken three other dual matches for a perfect record. The mark is only slightly blemished by a second place finish in a quadrangular meet at Northwestern.

The toughest part of the wrestlers' schedule is yet to come. They must face Illinois and Indiana next Friday and Saturday. Then it's Iowa State, Michigan State and Michigan, so the grapplers have their work staring them in the face. The team deserves a fine send-off, for the roughest part of the season lies ahead.

Perhaps you've noticed this page has been running a weekly series of articles written by John Ross concerning minor sports. Johnny is very devoted to the less-publicized sports, being a participant in wrestling himself. The series was intended to stimulate some interest in swimming, gym and wrestling by playing up some of the more entertaining aspects of each sport.

Minnesota's swimmers have a tough time every year no matter what the schedule because of the lack of indoor pools in the state's high schools. It's a happy occasion for the swimmers when they can win a few meets each season. The first conference win in two years came last weekend when the tankmen toppled Northwestern. Only in productive years can the Gophers hope to equal teams like Ohio State and Purdue.

Swimming fans have a real treat in store next month when the Big Ten holds the conference meet at the Cooke Hall pool March 7 through 9. Some of the nation's best swimmers and divers will offer seldom-seen entertainment in these parts.

On the gymnastics front, acting coach Bob Johnson is having a rough debut in his initial coaching season. His team hasn't won a meet in five tries. But it isn't the coach's fault when he hasn't got enough material to capture places in some events. The gym squad seldom overwhelms opponents with first place finishes, but it has enough seconds and thirds to help the point total mount.

| I-M Slate | |
|---|-----------|
| ★ ★ ★ | |
| BOWLING | |
| Monday | |
| Independent League | |
| 6 p.m. | Alleys |
| Pinsplitters vs. Newman Club | 1-2 |
| Spinners vs. Ronnings | 3-4 |
| Tiger A.C. vs. Scholars | 5-6 |
| No Names vs. Toppers | 7-8 |
| 2-4-D's vs. Sad Sacks | 9-10 |
| Sloppy Five vs. Undertakers | 11-12 |
| Alley Kats vs. Ag. Education | 13-14 |
| Keglers vs. Island Five | 15-16 |
| NROTC Cougars, bye. | |
| MMA League | |
| 8:15 p.m. | |
| Rolloffs: Centennial III Cardinals; Pioneer V; Centennial X; and Centennial IV. | |
| BASKETBALL | |
| Monday | |
| 8:15 p.m. | |
| Lucky Seven vs. Hardballers | 7 p.m. |
| Jumbos vs. Civil Engineers | 7:50 p.m. |
| Killion's Crushers vs. Bagoites | 8:40 p.m. |
| Honeywell Co-ops vs. Beard's Boys | 9:30 p.m. |
| Tomnies vs. Clock Stoppers | |

| I-M Scores | |
|--|--|
| BASKETBALL | |
| Phi Gamma Delta 43, Zeta Psi 24 | |
| Newman Club 85, Bucketnuts 21 | |
| Mills Boys 2, Tigers 0 (forfeit) | |
| A and B Sporting Goods 46, Gents 26 | |
| Delta Kappa Epsilon 30, Theta Delta Chi 25 | |
| Chi Psi 48, Phi Kappa Psi A 39 | |
| Phi Epsilon Pi B 74, Alpha Epsilon Pi 24 | |
| Phi Epsilon Pi A 39, Kappa Sigma A 25 | |
| Amigo Club 32, Tiger A.C. I 31 | |
| Ki Dobra Ki 32, Bucket Swishers 20 | |
| Aecia A 34, Sigma Phi Epsilon 27 | |
| Phi Delta Theta A 73, Triangle 30 | |
| Tau Kappa Epsilon 2, Phi Sigma Kappa 0 (forfeit) | |
| Theta Chi A 46, Alpha Tau Omega 37 | |
| Diamond Clear 42, Arrow Inn 39 | |
| Question Marks 27, Bobcats 18 | |
| Sigma Alpha Epsilon Lions 69, Psi Upsilon 36 | |
| Sigma Chi A 32, Beta Theta Pi A 25 | |
| Alpha Delta Phi 34, Delta Tau Delta B 19 | |
| Sigma Alpha Epsilon Gold 30, Sigma Chi B 25 | |
| B-House Boys 2, Delta Kappa Phi 0 (forfeit) | |
| Kappa Sigma B 29, Sigma Nu B 27 | |
| Phi Delta Theta B 58, Theta Xi 22 | |
| University Spars 49, YMCA 26 | |
| Delta Chi 42, Sigma Alpha Mu 29 | |
| HOCKEY | |
| Centennial X 6, Pioneer III 0 | |
| Centennial III 3, Centennial IV 2 | |
| Pioneer XV-XVI 2, Pioneer IV 1 | |
| Pai Omega 6, Farm House 9 | |

U Faces CC Monday

Michigan's New Strength 'Greets' Gophers Tonight

By Phil Meyer

Local hockey followers may see the best brand of college hockey this season with Minnesota playing four games here in the next five days.

Michigan, the Gopher opponent tonight and tomorrow at Williams Arena, has added two of the league's best players to its roster in hopes of climbing out of fifth place in the Western Intercollegiate Hockey League.

THE WOLVERINES' two "new" performers, wing Wally Maxwell and defenseman Mike Buchanan, are not exactly new to the WIHL, however. Both figured highly in the national champions' attack last year until they were declared ineligible for accepting expense money and working out with a professional team.

Meanwhile, Colorado College,

'Winningest' Gophers Seek 5th Straight

Minnesota's winningest winter sports team—the wrestling squad—shoots for its fifth straight win tomorrow at 2 p.m. when Cornell College's Rams invade Williams Arena.

The match will feature a hometown rivalry angle when Minnesota's Billy Write meets Tom Miller of Cornell. Both are Waterloo, Iowa, boys and wrestle at 177 pounds.

Coach Wally Johnson admits there's a break in the mat slate but realizes the tough ones will be coming up at the end of the season.

"We've gotten some sophomores ready in the other meets and they've come along fine," says Johnson. "As a result, we've developed some pretty strong team confidence."

Your winter quarter fee statement will get you into the meet without extra charge.

which boasts the league's top record upon coming to the St. Paul Auditorium Monday and Williams Arena Tuesday, also has some individual standouts.

WING BOB McCusker, leading scorer in the WIHL, and center Billy Hay, the league's top playmaker with 12 assists, lead the Tiger offense.

So far they have sparked the Colorado skaters to what press releases call a record not only "impressive in the won-lost column, but also in the overpowering manner through which these wins (17 in their first 18 games) have been obtained."

COLORADO SCORED 145

goals in those 18 contests—an average of 8.1 per game.

The team which beat Minnesota twice during the Christmas holidays is billed as "well-balanced, offensive-minded" and capable of breaking every existing collegiate hockey record.

MCCUSKER AND Hay are not the only stars either. Wing Ike Scott is seventh among the league's top scorers and All-American candidate Don Wishart has been the highest scoring defenseman in the WIHL the past two seasons.

The league-leaders have an all-Canadian team with the exception of goalie Howard Viger, who is an International Falls (Minn.) product.

don't take a chance!

Get her **DIAMOND** at

GUSTAFSON Jewelers, Inc.
40 Nicollet Ave.

Budget Terms

Cert. Gemologist
Amer. Gem Society

Est. 1927

SAVE TIME! Visit Your

Campus Sporting Goods Store Today

| | | |
|--------------|-----------------|-------------------|
| SKIS | FIGURE SKATES | TABLE TENNIS BATS |
| SKI BOOTS | HANDBALL GLOVES | ATHLETIC SUPPLIES |
| PARKAS | SWEAT SHIRTS | GYM SHOES |
| SKI TROUSERS | SWEAT PANTS | FENCING FOILS |

STADIUM SPORTS CENTER **The Ski Den**
SPORTING GOODS
724 WASHINGTON AVE. S. E.
Opposite Memorial Stadium
Hours 9 to 6 — Open Mon. & Fri. Eves. 'Til 9 — Sat. 'Til 5:30

Biggest Student Bargain Ever!

73-77 DAYS from \$1035
(All Expense)
GOLDEN BEAR ALL-STUDENT FUN TOUR TO EUROPE 1957

- Entertainment on one class Student ships with lectures and language lessons by experts.
- See exciting events and places . . . Meet European students in many countries.
- 3 departures from New York last half of JUNE

ASK FOR DETAILED ITINERARIES

SCHILLING **STOP TOURS**
Travel Service
722 2nd Ave. South, Minneapolis, Minn.
FE. 6-9385

Skiing

at **SKI MAC**
SOMERSET, WIS.

Best of the Season
3-4 in. Powder Snow
3-4 in. Base

OPEN - WED. NITE
7:15 - 10:30 p.m.

SAT. & SUN.
9:45 a.m. to 5:00 p.m.

EXCELLENT RENTALS AVAILABLE

★ PRICES SLASHED! ★

HURRY! HURRY! HURRY!
TERRIFIC SAVINGS AT

The College Shop

GROUP I

SUITS YOU SAVE \$20
Values to \$65.00
Reduced for Quick Sale to
★ **\$39⁸⁸ & \$47⁸⁸** ★

GROUP II

SPORT COATS
REDUCED FOR QUICK SALE
★ From **20% Off to 1/2 Price** ★

GROUP III

SLACKS REDUCED FOR QUICK SALE!
Values to \$15.95
★ Now **\$8⁹⁹ & \$10⁹⁵** ★

GROUP IV

SWEATERS
MacGREGOR IMPORTED LAMBS WOOL
★ Sale Priced **\$6⁹⁵** ★

GROUP V

★ **HARRIS TWEED OVERCOATS** ★
Reg. \$60.00 & \$65.00
Never Before at \$ **49⁵⁰**
This Low Price

GROUP VI

SHOES IMPORTED ENGLISH SHOES
VALUES TO \$20.00 HAND LASTED
★ Only **\$10⁹⁵ & \$12⁹⁵** ★
FREEMAN SHOES 20% & 30% OFF

DRESS SHIRTS
Values to \$5.00
\$3²⁹

TIES
Sale Priced
99¢

JACKETS
Group At
1/2 PRICE

The College Shop

One Block East of the Union at 500 Washington Ave. S.E.

How to Drape a Greek

By Howie Seemann

Coeds from Kappa Kappa Gamma academic sorority made the rounds of fraternities and sororities last Monday night.

THEIR MISSION was one of education in how to make a Greek tunic for the Greek Week Tunic Twirl to be held at 9 p.m. Monday in the Prom Ballroom, St. Paul.

For those who may have missed the instructions, the Daily presents this resume of directions with illustrations. Dance co-chairman Frank Victor, SLA junior, gives the directions. Kathleen Cranston, Education sophomore, is the model.

Dick and Don Maw's Orchestra will play and the Greek Week Queen will be crowned at intermission.

"Get a sheet of single-bed size," Victor said. "You also should have a cord to tie at the waist.

"**HOLD THE** sheet with arms wide open, and measure from the arm-pits to determine the proper length," he said. "Fold under the excess sheet to desired length."

Men should wear Bermuda shorts or swim-

ming trunks' under their togas. ("Anything with pockets will do, however.") Coeds should wear something on the same order, he said.



Victor

The sheet then should be wrapped around with a safety pin to secure the end of the sheet. After the wrapping is complete, the end should be put over the left shoulder and secured with a safety pin.

"When finished, the cord should be tied around the waist with the knot to the side," he said.

To give an authentic Greek effect, Victor added that "all should wear laurel wreaths on their heads."

Proper footwear will be either sandals or white bucks, he said.

A very important factor is originality in design, according to Victor.

HE SAID that the dance is free. All that is required is that you must wear a tunic. "You don't have to be a Greek to attend," he said.



Kathleen Cranston demonstrates how to make a tunic. The materials needed are a sheet, cord and laurel wreath.

Photos by Dan Perlmutter



"Hold the sheet with arms wide open," Victor instructs. Bermudas should be worn under the sheets.



Frank Victor gives the tunic a few finishing touches. The Tunic Twirl will be held at the Prom Ballroom Monday night.



Kathleen shows what the well-dressed Greek will wear. Admission to the dance is free to those dressed in tunics.