

Mortenson thinks so

# Does U planning neglect students?

(Second in a two-part series on student planning and the administration.)

By MIKE SCHMITZ

Many of the University's administrators are "autocratic, undemocratic, and irresponsible," according to Tom Mortenson, a student planner who worked with them for three years.

Mortenson left Minneapolis Sunday for the Peace Corps. Overriding most of his criticism was his "obvious conclusion" that the University will eventually eliminate students.

**THE SCHOOL** will be converted into a research and community service organization within the next 15 to 20 years, Mortenson claimed. In the meantime students will be given a half-hearted education at the University or shuffled to a half-baked state or junior college by an administration which "doesn't give a damn" about them, he added.

Mortenson said the first step in eliminating the student will be the setting of a ceiling on undergraduate enrollment within the next few years. During this time junior colleges will gradually be converted into state colleges.

**(ELMER LEARN, University planning coordinator, was quoted Sept. 27 as saying that "We will have to put a lid on freshman and sophomore enrollments, and it may be only a year or two away.")**

MSA Pres. Howard Kaibel yesterday agreed that it is "general knowledge" that the University will eventually eliminate the undergraduate in deference to graduate research.

But he added that the University has shown a historical trend of building up the stages it has left behind. When the University pulled out of the high school stage in the 19th century, for instance, it left behind a strong high school system. The next stage is strengthening state and junior colleges.

**KAIBEL AGREED** with Mortenson that "the transition period is a problem," creating a gap during which good students turned away from the University have no place to go.

Of Mortenson, Kaibel said, "I think everybody would agree with me that we are losing a good man. He was way ahead of any other planning at the U, or at least right with it."

This was Mortenson's complaint. Before he left he said, "I know in my own mind that I'm years ahead of the University in coming to inevitable conclusions about campus problems. The administration just has a lack of perceptiveness."

**"WHY SHOULD GUYS** with Ph.D.s be so close-minded when a student comes along with new ideas that they should be looking for?" he asked. "The University is more conservative than the church."

Most administrators are not responsible to the students, he continued. They consistently benefit the faculty at the expense of

**U planning**

(Continued on Page 3)



Mortenson



Kaibel

# Minnesota Daily

An Independent Student Publication

Volume 68 Minneapolis - St. Paul, Minnesota - W

Nov 30, 1966

## Free university courses winter quarter

By JIM EBERT

A free university within the University is being organized for winter quarter by the Students for a Democratic Society (SDS).

The free university will be open to all students, faculty members, and interested community people who "want to participate in an independent forum for honest, intellectual dialogue founded on personal encounter and exchange," its organizers say.

**NO SPECIFIC** courses have been set up and students will be encouraged to initiate their own courses. Brian Coyle, CLA senior and SDS organizer of the free university, said yesterday no grades or attendance records will be kept.

Coyle said a free university will "encourage personal encounter and honest dialogue between teacher and student." Coyle believes Minnesota education is stifled by the "multiversity" structure of the University.

Coyle's "A Modest Proposal for a Free University" is the manifesto for the proposed organization. The manifesto, which will go on sale winter quarter, proclaims, in general, that a Minnesota multiversity miseducates its students, warps its faculty, and promotes widespread alienation in society.

**POINTING** toward a "renewed community of scholars," the manifesto admits it does "not have a panacea for America's educational dilemma." But the emergence of more than 30 free universities in the past year, according to the manifesto, is a spontaneous movement to restore vitality and flexibility to American education.

Coyle now is seeking faculty support for the free university. According to Coyle, a general

meeting of faculty and students will be held during winter quarter to schedule classes. At that time, a coordinating staff will be established to "give advice and help," and publish a newsletter.

**THERE WILL BE** no bureaucracy, according to Coyle. The entire Free University will hold a short monthly meeting and the project will be financed by faculty contributions and a \$2 "voluntary contribution" from each student.

Coyle said the project is radical but not left-wing.

Space for the free university's classes will be obtained in the Union under SDS sponsorship, and a class may move off-campus if it wishes, Coyle said.

Excerpts from the manifesto:

"Today the 'Administrative mentality' is entrenched in the Community of Scholars, and this mentality has paralyzed initiative and generated insane conformity."

**"THE ROUTINE** which shapes the undergraduate's consciousness is comprised of a systematic . . .

brutality inflicted by a faculty of 'well-meaning and nice' men who feel that the student's situation is hopeless when it comes to . . . serious learning.

"We are saying, in effect, that the Multiversity is a gigantic hoax, a system which does little to educate, but much to train students and faculty to be orderly and meek.

**"THE UNIVERSITY** destroys many sincere students' desires to perceive reality with optimism, at a time when they most desperately need to learn that painful art.

"The Free University is a positive, creative response to the impersonality, gigantism, and lack of community in the present academic world.

"If the Multiversity is, as we claim, not as free as it might be, then not until the advantages of a truly free university are made sharply visible will universities begin to move toward significant reform."

## City may delay action on widening of 4th St.

The Minneapolis City Council may follow a recommendation of the Minneapolis Long-Range Improvements Committee (CLIC) and hold off its decision on the widening of S.E. Fourth St. until early next year.

Second ward alderman Robert MacGregor said yesterday that the City Council will probably act favorably on a recommendation of the CLIC's expressways task force that the decision on the widening

of Fourth St. be held off until the University completes a traffic and parking survey it is conducting.

**THE TASK FORCE** made its recommendation yesterday. The task force report asked that CLIC recommend holding off the decision until Feb. 1 to give the University time to develop alternate solutions to the traffic problem on Fourth St.

Fourth St. residents and University officials last spring opposed a proposal to widen the street because this would necessitate removal of boulevard trees. The City Council pasted the proposal which was then vetoed in May by Mayor Arthur Naftalin.

**UNIVERSITY** planning coordinator Elmer Learn yesterday said he was pleased the CLIC task force concurs with the University's position on the Fourth St. proposal.

The University long-range parking and circulation committee is now studying campus traffic and parking problems, and Learn said it would be unwise for the city to change traffic patterns until the report is released in January.

Learn said the University has a consulting firm gathering information on the nature of the University's circulation problems. He would not speculate on what solutions the University will propose to eliminate traffic problems.

**THE COUNCIL** sustained the veto after Highway Commissioner John R. Jamieson said state highway funds still might be available for the project even if the street were not widened.

**CLIC**

(Continued on Page 7)

## NSA exhorts schools to drop class ranking

By HANS KNOOP

**WASHINGTON, D.C.**—A resolution urging college administrations to cease compilation of class ranks for selective service purposes was unanimously approved here Sunday by the national supervisory board of the National Student Assn. (NSA).

Minnesota Student Assn. (MSA) Pres. Howard Kaibel wrote and introduced the resolution. Steve Parliament, graduate student, seconded it. Kaibel and Parliament were elected to the 10-member board at the NSA Congress last August.

**(MSA HAS NOT** yet adopted a position on class ranks. On Nov. 10 the MSA task force on class ranks submitted a resolution to the senate urging the Office of Admissions and Records to cease releasing class rank to selective service boards. The resolution was referred to a subcommittee for further study.)

**NSA**

(Continued on Page 3)

## AFL-CIO leader says

# Regents need labor voice

By MIKE ANDERSON

The leader of the state AFL-CIO yesterday urged the Conservative-dominated state legislature to keep labor's voice on the Board of Regents.

Labor Federation Pres. David Roe said he hoped "partisan political considerations" would not be a factor when the legislators meet in January and fill the vacancy created by Regent Robert Hess, DFL party leader and former state AFL-CIO vice president.

Hess, whose term on the board expires in February, will be moving to Washington to become administrative assistant to Rep. Joseph Karth (D., Fourth Dist.).

**ROE SAID** labor has had a representative on the board for more than 30 years. "We feel that this vital link between the working men and women of Minnesota and their great University has been one of the main factors in maintaining the broad public support which

the University has enjoyed," he said. "The removal of labor's voice from the counsels of the University's Board of Regents could serve to damage this support."

Despite Roe's statements, St. Paul Conservative legislators plan to go ahead with plans to propose that former Republican Gov. Elmer L. Andersen be appointed by the lawmakers to succeed Hess as regent from the 4th district.

Sen.-elect John Tracy Anderson yesterday said he is supporting Andersen because "the former governor is eminently qualified and not (because he is) Republican or anti-labor."

Anderson said he sees no reason why a special interest group, like labor, needs representation on the board.

**Labor**

(Continued on Page 7)



Anderson

## St. Paul limits parking

**On-street parking is now restricted to two hours between 8 a.m. and 4 p.m. in the St. Anthony Park area adjoining the St. Paul campus.**

The restricted area is bounded by Cleveland Ave., Dudley, Chumsford, and Knapp Sts., all in St. Paul, Capt. James McDonough of University Police reported.

**Strict enforcement will begin Thursday.** University Police will assist St. Paul Police in tagging violators.

**University students and personnel are urged to use the parking lots on the St. Paul campus and fairgrounds.**

**St. Paul officials adopted the new restriction policies as a result of St. Anthony Park residents who complained of heavy on-street parking in residential areas.**

**Falcon Heights has restricted parking to two hours on both sides of Hoyt and Folwell Sts.**



Learn

Holmes planners will survey area but . . .

# Redevelopment awaits federal grants

By PAUL GRUCHOW

Redevelopment activity in the Holmes area of Southeast Minneapolis is at a standstill while officials await approval of a \$155,000 planning grant from the U.S. Department of Housing and Urban Development.

The grant, if approved, will be used to develop an urban renewal plan for the area.

**THE HOLMES AREA** is in the vicinity of the E. Hennepin Ave. shopping district. The boundaries of the 64-acre tract run from University Ave. to the back side of the commercial property fronting on Central Ave., from E. Hennepin Ave. to both sides of S.E. 9th St. and as far toward Dinkytown as S. 6th Ave. north of S.E. 8th St. and S. 4th Ave. south of S.E. 8th St.

The request for planning funds was made to the Chicago office of the Department of Housing and Urban Development last spring, according to Joseph Russell, chairman of the Southeast Minneapolis Planning and Coordinating Committee's (SEMPACC) committee on the Holmes area.

The grant has not been approved because of a lack of federal funds for such projects, Russell said yesterday. "There has been no late word on approval of the funds," he said.

**THE REQUESTED** planning money would be used to conduct a detailed survey of the buildings in the Holmes area, possible clearance patterns and possible changes in street patterns.

From the study, which would take one to 1½ years to complete, the City of Minneapolis would make detailed recommendations to the federal government for use of urban renewal funds.

The request, if approved, would also reserve \$2,907,000 in future urban renewal money for use when the detailed plan has been completed.

IF THE SECOND grant is ap-

proved after the final plan is approved, the city and federal governments will then cooperate in development of the area.

Russell described the Holmes area as one of diverse uses in which there has been some deterioration.

"We have requested the renewal funds," he said, "because we hope that by some rehabilitation now we can avoid having to work the area over completely some time in the future."

**RUSSELL POINTED** out that the Holmes area is located between the shopping district on East Hennepin Ave. and an extensive housing area in Southeast Minneapolis.

Because of its location, he said, and because of its diversity the

area acts as a buffer which keeps the commercial and residential areas apart.

"We think that development of the area, maintaining its diversity, will be good insurance toward preservation of the existing residential area," Russell said.

**THE DEVELOPMENT** planning officials are thinking about would include the construction of some new apartment buildings, some town houses and some single family units.

"The type of building we want to construct would tend to increase the population density in the area," Russell said.

"The kind of building SEM-PACC is suggesting would encourage all types of residents," he said. "University students and faculty,

young families and people already living in the area would be encouraged."

PATRONIZE YOUR ADVERTISERS

**GOPHER BARBER SHOP**  
810 Washington S.E.  
Near Oak & Washington  
Regular or Razor Cuts  
\$2.25 331-9878



**IVS**

## OPPORTUNITIES OVERSEAS

TEAMS IN—

- Education
- Agriculture
- Community Development

IVS needs highly-motivated college graduates to fill openings. IVS seeks people with degrees in liberal arts, education, science and agriculture—

apply to

**INTERNATIONAL VOLUNTARY SERVICES, INC.**  
1508 CONNECTICUT AVENUE, N.W., WASHINGTON, D.C. 20036

Your Placement Office has further information.

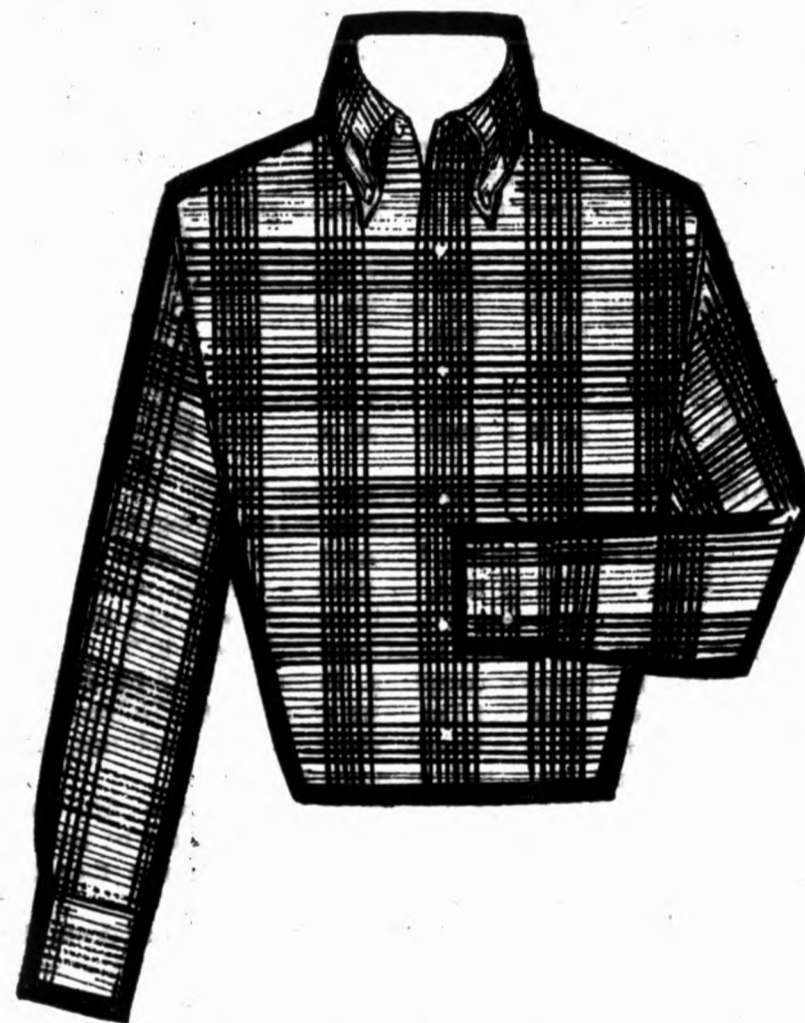


**J.B. Hudson**  
JEWELER



### Brilliant-cut solitaire

Youthful beauty of gold florentine wedding band, 15.00. Solitaire, .44 ct., 400.00. No down payment at Hudson's Downtown, Southdale, Brookdale.



### Hathaway's Lochlana:

for a soft touch

Lochlana is Hathaway's exclusive blend of 50% wool/50% cotton. The wool used is only the part called the "tops," the mink of wools. The other half is long staple fine English cotton. The fabric is woven in Switzerland. Find out what the soft life is like. Slip on one of Northbriar's three Lochlana plaids. You'll know how good 20.00 can feel. Northbriar Shop, all stores



LET US BE DISCOVERERS

## SINFONIA



"Music performed in the Tyrone Guthrie Theatre, because of the fine acoustics and intimate setting, becomes a personal message to the audience. There is an emotional participation, a *durchleben* . . . it is like a discovery."

Stanislaw Skrowaczewski

**SINFONIA:** Rarely heard works of W. F. Bach, Boulez, Hindemith and Stravinsky; selected and personally introduced by Maestro Skrowaczewski and performed, under his baton, by members of the Minneapolis Symphony Orchestra and duo-pianists Alfons and Aloys Kontarsky.

**MON., DEC. 5, 8 PM**  
**GUTHRIE THEATRE**

TICKETS: \$4.00—\$3.50—\$2.50 (Students \$1.50) at Symphony ticket office (373-2331), Guthrie box office (327-2224), all Dayton's stores.

Presented by Minneapolis Symphony Orchestra and Walker Art Center

**Will work in human relations**

# MSA names area head

Ida Holland Elam, GC freshman, was appointed Minnesota Student Assn. (MSA) human relations director last week.

Mrs. Elam, who has been active in civil rights work in the South, said her primary concern will be working with Project Leadership, a

new MSA human relations program.

Mrs. Elam said Project Leadership will be working with University and city-wide human relations projects that have already been initiated.

Project Leadership volunteers are working two nights a week with teen-agers in the Pillsbury citizen service. "We talk to people about their problems and find out what it is they want to do about them," she said.

Project volunteers are also working with the Central Area Action Committee, south of Lake St. to solve some of the social problems of the area, ranging from "garbage not being collected to zoning."

The project also works with high school seniors to interest them in attending college.

**READ THE WANT ADS**

## NSA . . .

(Continued from Page 1)

Mandating NSA officers to work with member student governments to carry out the new policy, the board elucidated a Congress resolution urging universities not to cooperate with the selective service process in any way.

In other business, the board approved a new NSA civil rights policy aimed at eventually reforming the educational system in the South.

"NSA WILL NOT necessarily be in the forefront of community action but the new direction may have the long range thrust of busting the southern educational system wide open," Kaibel said.

Traditional civil rights projects like voter registration drives will be continued along with the new projects, he said.

Initially NSA will work toward "simple kinds of changes like activating student governments at southern universities," Kaibel said.

NSA'S FIRST STEP will be to set up two conferences—one for Negro students and one for white students—at which the problems of students at southern schools will be discussed.

Eventually NSA hopes to bring students of both races together at integrated conferences.

Kaibel strongly objected to the "segregated" conferences. "This seems to be starting in on the wrong foot," he told the board.

Kaibel will present a full report of the board's actions at the next MSA senate meeting.



Mrs. Elam

## Minnesota Daily

The student newspaper of the University of Minnesota, Minneapolis/St. Paul. Published daily except Saturdays, Sundays, holidays, and the days after holidays during the academic year and semi-weekly during summer session by the Board in Control of Student Publications, Thomas Gagnon, President. Main offices: 10 Murphy Hall, University of Minnesota, Minneapolis 55455. Editorial phone 373-3381. Business phone 373-3385. St. Paul Bureau: 254 North Hall, University of Minnesota, St. Paul 1. Phone 647-3425. Represented for National Advertising by National Advertising Service, 18 E. 50th St., New York. Printed at Commercial Press, 418 S. Third St. P.E. 6-6644. Subscription \$6 per year, \$2 per quarter. Singles 5 cents. Second class postage paid at Minneapolis.

**NEWS STAFF**

News Editor . . . . . Mike Anderson  
Copy Editor . . . . . Liz Nussbaum  
Makeup Editor . . . . . Susan Wells  
Photo Editor . . . . . Greg Cummins  
Sports Editor . . . . . Tony Swan  
Asst. City Editor . . . . . John Olson  
Entertainment Editor . . . . . Jon Sisson  
Night Editor . . . . . Liz Nussbaum  
Asst. Night Editor . . . . . Hans Knoop  
Asst. Night Editor . . . . . Di Van Dusee  
Night Sports Editor . . . . . Bruce Brothers



**ORIGINAL STUDENT POETRY**

*Come Listen and Comment!*

**TODAY  
3:30-5:00  
cmu gallery**

UBOG

## U planning . . .

(Continued from Page 1)

the students — "robbing the poor to pay the rich," he said.

One recent example was car pool lot 33, one-fifth of which was suddenly confiscated last March for Institute of Technology faculty use, Mortenson claimed. Another was a plan broadening and encouraging use of car pools which Mortenson said the University Police killed last January because the plan would have reduced parking revenues to the police.

**KAIBEL'S IMPRESSION** of the dispute between Mortenson and the administration was that the student planner unconsciously developed his own administrative structure. Whenever he was ready to implement his conclusions, the University planning office "would step in and say, 'We've just hired someone to study this problem,'" Kaibel said.

But on the Uniflow (mass-transit) proposal in particular, Learn asked, "Would you adopt a plan using an untested model with land that was not readily available?"

Learn added that Mortenson's conclusions were not inevitable. "I don't want to take anything away from Tom, but this was just one man's view. You have to look at a variety of solutions. Some of Tom's conclusions were proposed long before he arrived."

**HE SAID THAT** campus problems studied by Mortenson were obvious problems.

High-level administrative committees are now studying parking, circulation, housing, and study space. A new Student Planning Commission under Tom Brady, CLA sophomore, is also analyzing the study space problem.

## University Shop

YOUNG-QUINLAN ROTHSCHILD



# Hunting Horn

CLUB TIES . . .

staunchly traditional, patterned in an orderly manner with the English Country hunting horn motif on contrasting or harmonizing backgrounds . . . in shades to complement the traditional wardrobe, for giving or wearing this holiday season . . . **4.50**

All Four YQR Stores



NEW FROM

**SHEAFFER.**

Classic new 404 Stylist™ cartridge pen in brushed chrome

**\$5**

Happy new gift idea! Slim, slender cartridge fountain pen in rich brushed chrome. Quick, clean, easy filling with Sheaffer Skrip® cartridges. Converter (95¢) adapts pen for conventional filling in seconds.

\* Complete Line of Sheaffer & Parker Pens, Pencils & Desk Sets

**CRANE'S OFFICE & SCHOOL SUPPLIES**

1417 4th St. S.E. 331-5969  
In Dinkytown

Goodman Jewelers 

Home of Star-Brite QUALITY DIAMONDS as Advertised in LIFE



**Contemporary Duo**

**THE SET \$133**

**NO MONEY DOWN**

Elegant duo from our new contemporary collection. Flashing Star Brite diamond in solid 14K gold setting. Truly a magnificent bridal pair. A treasure forever. No money down. Under 217

**SPECIAL STUDENT DISCOUNTS**

## GOODMAN Jewelers

Since 1907

Minneapolis, 32 S. 7th St.      St. Paul, 94 E. 7th St.  
Brookdale Shopping Center      Southdale Shopping Center

**MANKATO • ROCHESTER • ST. CLOUD**

# Minnesota Daily

wednesday, november 30, 1966

Hans Knopp  
Editor

Jim Fenning  
Business Manager  
John Styve  
Advertising Manager

Doug Armstrong  
Managing Editor  
Don F. Snorr  
Associate Editor

The Minnesota Daily is an independent student newspaper. The views expressed in the column below are those of the editors. Opinions elsewhere on the editorial pages are those of the students who write them.

## Conditions for pass-fail

A pass-fail grading system should not be attempted at the University unless the conditions suggested by Donald K. Smith associate vice president for academic affairs, are adopted.

Smith points out that the pass and non-pass symbols suggested for the system will be a supplement to the present grading symbols. He also suggests that the symbols should not apply to courses taken in the major area.

THESE LIMITATIONS are appropriate because the major goal of a pass-fail system should be to encourage a liberal education, not only for "liberal arts" students, but for all undergraduates at the University.

The pass-fail alternative may be expected to permit students to take courses outside their major without fear of getting bad grades and to explore a select area rather than a broad subject.

These freedoms are not as desirable for course selection within a major field where grades have certain educational value.

FOR ONE THING, they permit potential employers and graduate schools to evaluate the scope and quality of a student's preparation. This is entirely proper, within limits, and is opposed primarily by those who see pass-fail grading as a complete replacement for grades.

Also, the present grading system does provide certain incentives for students who need them. One of these is the incentive to study. More important, however, grades can be a real reward for good scholarship. This often seems to be overlooked by the more enthusiastic supporters of grading changes.

The conditions Smith suggest will, in addition, give the pass-fail proposal flexibility. This is an important advantage, because implementation of the system may suggest new applications for the concept.

## Protect 4th street trees

The Minneapolis City Council should vote to delay plans for the proposed widening of S.E. 4th St., it was advised to do yesterday by a task force of the Capitol Long-Range Improvements Committee.

The widening would encourage even heavier traffic in an area where noise and automobile congestion are already serious problems. It would also force the removal of the boulevard elms between S.E. 10th and 13th Aves., and they are too valuable to lose.

THE UNIVERSITY'S extensive traffic and parking survey of the area, which could provide some alternatives to the street widening, is expected in January.

Any decision to go ahead with the project while there is still a distinct possibility that the disadvantages of street widening can be avoided is premature and irresponsible.

## Labor and the Regents

The demand by David Roe, president of the Minnesota AFL-CIO Federation of Labor, that a labor union representative be appointed to fill the vacancy on the Board of Regents, strikes us as a bit unreasonable.

It is true that labor has been represented on the Board for a long time and that labor representatives, particularly Robert Hess, have usually been men of high caliber. But labor, like the Chamber of Commerce or other interest groups, has no inherent right to a Regent's seat.

Roe's suggestion that partisan politics should not enter into the selection of Hess' successor is hypocritical. Roe is clearly playing politics by making the selection of a new Regent an issue. To gain favor with the Republican dominated legislature and with a Republican governor, the labor movement seems to be shifting away from its DFL ties to a more independent position. Roe is using the vacancy to test how successful labor has been in making friends with the GOP.

And finally, we doubt whether labor leaders could come up with a better candidate than former governor Elmer L. Andersen, apparently the unanimous choice of fourth district conservatives. Merit-based on wisdom, knowledge and experience—should be the prime consideration in the selection of a regent. Andersen clearly qualifies.

# University needs clear policy on academic-athletic relations

By David Rosenberg

Wouldn't it be nice to see a clear cut policy decision concerning the relationship between athletics and academics at the University? Recently freshmen were denied the right or privilege to have a couple of intercollegiate games a year. I am not asserting that this action is right or wrong, but I feel justified in asking for a principle upon which the decision was made.

The higher-ups must have thought football would be over-emphasized on campus—at least this is what we must assume. Evidently they do not feel the need to show that football and education are incompatible. It must be obvious to them.

It is not obvious to me. Let us examine various definitions of education. An anthropologist would probably see our University as performing two functions: 1) It is a place to meet your mate, and 2) it is a place which prepares the individual to get a job. Both of these would be seen by the anthropologist as legitimate functions of the University, since education is presumed to be nothing more than getting the individual ready to participate in society. The job function is seen as analogous to the father in the primitive society teaching his boy to hunt.

There is no doubt that the anthropologist will get a substantial amount of agreement. However, there are some educators who are incensed with the idea that the University simply supplies men for jobs. These educators, principally in the College of Liberal Arts, claim that the student should get a "liberal education." What is a liberal education? Nobody seems to know, but some have proposed a mark by which we know the liberally educated person. The liberally educated person is moral, ethical, tolerant, etc.

Under the anthropologist's definition there is no justification for evaluating "academics" above football. To be a football player is

also a job in our society. In fact, football should be allowed to be a student's major just as sociology or chemistry is. The same holds true in regard to the mark of the liberally educated person. It is at least as likely that the student will acquire tolerance and sense of fairness (not to mention team spirit) in a fiercely fought contest than in a classroom. The principle reasons for this are: 1) It is only when one is emotionally involved that he can test his beliefs; it is easy to be morally objective in someone else's case, and 2) unethical tactics do not "pay off" nearly so often in football as in real life. The man who loses his head or

purposely plays dirty gets his team penalized 15 yards or, if undetected, sometimes gets a two-on-one block headed his way on the next play.

This program would have the additional advantage of making things honest. Currently a football player must have a 1.7 average in his sophomore year, a 1.8 in his junior year, and 1.9 in his senior taking only 11 academic credits per quarter. Considering the one credit A the player gets in football every year, he need go through only a minimal effort. I feel the small amount gained by this is not worth the hypocrisy involved in

(Continued on Page 5)

## campus forum

to the editors:

### • The halfway house

The attacks on the proposal for a halfway house in South Minneapolis leveled by Miss Welch (Nov. 18) and Mr. Welch (Nov. 23) fail to do much more than nit-pick, and consistently avoid the main issue. To take their arguments in order:

• "75 per cent of those who commit crimes do so within 90 days of their discharge." This is the highest of several figures I've seen, but assume it's correct: it is misleading, and tends to imply that an inordinately large percentage of parolees and discharged prisoners return to crime. The pertinent fact in terms of the halfway house is that the proposed 18 residents will be carefully selected from among first offenders only, and no pathological cases will be included.

• "even after rehabilitation . . . 25 per cent commit new crimes." True, no doubt. There is no evidence, however, to suggest either (a) that they necessarily do so in or around their place of residence, or, (b) that there is in fact any

more danger to residents of an area after than before the establishment of a rehabilitation center. Moreover, these figures apply to all persons undergoing such rehabilitation, not the highly select group proposed for the Longfellow center.

• Such a project is "not moral . . . when (the residents) object to it." This is a quiet re-statement of the position that people who own property own the neighborhood, and can thus impose entrance requirements. This is, of course, rubbish, and national, state and local laws explicitly say so. The moral question is, rather, whether the Longfellow area has any business refusing this opportunity to help their less fortunate neighbors. The Longfellow Residents' group has yet to answer that question.

Denis Wadley  
MSA senator

### • Women not allowed

Rise up, men. Keep the pool hall for pool. Everywhere you go you have to face the coed; the areas for social dealing, fornication.

(Continued on Page 5)

# 'Liberal bigotry' seen in reaction to appointment of Prof. Roche

By T. I. Smits

Laughter has rightly been described as the best medicine in various situations; hence, it is encouraging to see that all humor has not been lost in the dialog between left and right (Daily, Nov. 29). Conceding a priori, the battle of parodies to Lee Warren Smith (after all, even Spike Jones and Stan Freberg gave up when faced with rock 'n roll), one still acknowledges the need for humor, given the sort of nonsense one is regularly exposed to in academic circles.

The trouble is that many otherwise intelligent people have reached such a mental state that they no longer know when they are parodying the opposition (a la L. W. Smith), and when they are engaged in logical analysis.

In this light, consider the recent response of the Vietnam community to the appointment of the independent liberal Prof. John P. Roche, to succeed Prof. Eric F. Goldman in his culture post. The reactions by Hans J. Morgen-

thau, the Cassius Clay of political science (in the New Republic, Nov. 26), and James A. Wechsler, ADA bigwig and the Westbrook Pegler of the left (in November's The Progressive) seem to exclude a warped sense of reality.

Being ticked off by Prof. Roche's witticisms about self-appointed "intellectuals," "who live in affluent alienation on Cape Cod and fire off salvos against the vulgarity of the masses" and "intend to launch a revolution from Riverside Drive," Morgenthau fires wildly: Prof. Roche's pronouncements, quote he, "make clear by implication what he conceives as his official task: to be the hatchet man who will try to ruin the reputation of those intellectuals who dare openly to disagree with his master."

He also accuses Roche of "an attempt . . . to exploit a residual American xenophobia in order to question my credentials." All this, and more ad hominem attacks on his opposition, instead of a logical

rebuttal. (He also faults Roche's "refusal to deal with an argument on its own merits, a cavalier attitude toward ascertainable facts, and the attempt to discredit by invective." And, he makes a big todo about LBJ's inability to take criticism!)

Jimmy Wechsler, in turn, is also furious at Roche for "his eagerness to divorce himself from what he views as liberal 'orthodoxy'" as well as the comments about "affluent alienation," and goes on to apologize that Roche's initial election to ADA chairmanship "might even have been averted if I had been less negligent and absent-minded." He lets it slip that, "ADA elections are traditionally the unsanctioned by the nominating committees' satisfaction of the state process," undercutting its usual pious preachments about "freedom of choice."

While Wechsler demands that LBJ have a "devil's advocate" on

(Continued on Page 5)

# campus forum

to the editors:

(Continued from Page 4)

tion, etc. are manifold. People who don't really want to play pool, but have ulterior motives such as furtherance of coed dominance or a date Saturday night, should stay out. Leave the pool parlor for those who want to play pool. The game is far more than hitting a ball with a stick—it is an institution, a time-honored tradition. While a woman may go through the physical motions, she will never play pool:

Michael E. Peterson  
CLA junior

## • Only thing to do

Sulo Mononen, in his Nov. 21 letter to the Daily, asked if "creative thinking" has been evidenced by our actions in the Vietnam war, and "are we not simply assuming that what we are doing now is the only things that can be done?"

Yes, Mr. Mononen, I do think it is the only thing that can be done. We cannot base our attitude on the past—i.e., on whether we were right or wrong to intervene in the first place. That was decided for us by Pres. Kennedy.

Rather, we must concern ourselves with confronting the present. And the present situation would command the following results if we were to simply withdraw from Vietnam now: a) we would be condemning our South Vietnamese allies to certain death, b) the chances for the establishment of a non-totalitarian regime in South Vietnam would be stamped out, c) the influence and pressure on small Asian countries

by Communist China would be greatly increased, d) we may very possibly find ourselves facing a bigger and more dangerous war with China.

You asked if one could support a policy where we use tear gas, bombs, etc., which might encompass civilians as well as soldiers. What do you think the other side is using—cream puffs? And what do you think the other side would use if we withdrew our military support? Tact? Diplomacy?

I doubt it. We can never determine the rightness or wrongness of war by viewing it chiefly in terms of military operations and its effect on the population involved. The only humane thing we can do now is to continue our support to Saigon since we have already committed ourselves.

I am not saying you are wrong in your attitude, Mr. Mononen, but while I admire your idealism, realism is staring us in the face.

Sharon Brueckner  
CLA senior

## Athletics . . .

(Continued from Page 4)

studying in order to be eligible. Studying to be eligible defeats the ultimate purpose of studying.

The other alternative for the academicians is to assume that there is something special in a liberal education even if we cannot define it. Thus football would be relegated to an extra-curricular activity. But if they do this they should have (to use an athletic expression) the guts to make sure the students who represent the University in football are students who happen to play football and not football players who happen to attend school. This can be easily done by making it a minimum requirement of every football player that he have a 3.0 average.

It will be argued that we will have a losing football team. To which I answer: 1) If the academicians are right it doesn't matter; 2) couldn't our unique position become a selling point to those good scholar-athletes who worry about whether football pressures will force lack of scholarship? 3) wouldn't the resulting team have tremendous spirit, tactics, and cohesiveness? Let us not muddle anymore with a compromise policy which neither adds much academically to the football major plan nor seriously deemphasizes football.

## Word choice confuses theology school issue

By HENRY E. ALLEN

TO THE EDITOR: Your editorial of Nov. 22, "A school of theology" has the unfortunate effect of clouding the issue by its choice of words and unsupported assumptions.

The very phrase "school of theology" which many people interpret to mean a professional school for clergy is certain to produce negative reactions. No one, to my knowledge, is proposing anything of this kind. A program of religious studies, on the other hand, with religion taught objectively, for the purpose of understanding, not propaganda, has had strong support in Minnesota, and can be found in the curriculum of most of America's leading colleges and universities.

Moreover, the expense bugaboo has been repeatedly raised by persons hostile to all manifestations of religion, academic or otherwise. We have never allowed budgetary stringency to be used as an argument against strengthening work in science or programs for material benefit. And as for the scarcity of non-sectarian professors of comparative religion—this simply reveals a failure to check out the facts. The availability of such instruction in a great number of institutions suggests that our Minnesota students are just coming to a realization of our deficiencies in this area.

However, your editorial might well have called attention to the progress made by the College of

Liberal Arts in its adoption of an inter-departmental program in religious studies. Notable appointments have been made in several departments to provide comprehension of religion historically, culturally and linguistically. History Prof. R. S. Hoyt's committee report, adopted by the CLA faculty in 1964, affirmed the view that the University "can and is indeed obliged to include in its educational program a proper attention to the scholarly study of religion."

The MSA educational commission will do well to take cognizance of recent constructive moves, the extent of current offerings already listed, even the availability of an inter-departmental major in religious studies. Students and faculty members concerned for bringing our curriculum at least on a par with other major institutions will give encouragement to what is being done in existing departments. And they will evaluate proposals for faculty appointments specifically in religious studies in terms of the strength and solidity to be brought to a sound academic treatment of religious knowledge.

(Henry E. Allen is a professor and co-ordinator of student religious activities.)

## APPLY

U of M Exchange Scholarships for study in

GERMANY  
MALAYSIA  
INDIA  
NIGERIA  
URUGUAY  
CHILE

Dec. 5  
Dead-  
line

Information and applications in MSA office, 213 CMU

8:30<sup>PM</sup> WED. DEC. 7



THE AMERICAN FUN

Exciting Show of Our Early Films

NORTHROP AUDITORIUM

Specialty staged! Full company of dancers, singers and orchestra.

\$4.00 \$4.00 \$3.50  
\$3.00 \$2.00

The Minnesota Daily Publishes An Entertainment Guide. Each Friday Throughout The Year

Wednesday, November 30, 1966

## Liberal . . .

(Continued from Page 4)

his staff, apparently he and the ADA in general feel differently about following such advice, Roche being "the only ADA chairman whose . . . election was a source of discontent." (Guess who was the only ADA chairman to depart noticeably from its usual ritualistic liberalism?)

Thus, despite L. W. Smith's sarcastic skepticism about "liberal bigotry," one can indeed see it in action if one is prepared to acknowledge it. Hence, when using parody to make a point, it is well to bear in mind where parody ends and reality begins.

## U FILM SOCIETY

Have You Sold Yourself To The Devil? . . . You, Too, Can Be Redeemed. See How In

## FAUST

An exquisitely produced and acted film being re-shown this year by request. Produced by Germany's greatest contemporary stage figure, the late Gustav Gründgens, who plays Mephisto. Color; in German; subtitles. Runs 2 1/2 hrs.

Wed., Nov. 30, 3:30 & 7:30 p.m.  
Thurs., Dec. 1, 3:30 & 7:30 p.m.  
Museum of Nat. History 75c

## Typewriters



Sales  
Repairs  
Rental

MINNESOTA CO-OP, Jr.  
512 WASHINGTON AVE. SE  
Between Harvard & Walnut

Napoleon Antoine Berbeau Says:  
**ZE YELLOW PIANO**  
"Est Tres Bien"  
321 14th Ave. S.E. 331-8096  
Third Floor

**MSA ASSEMBLY MEETING**  
Tomorrow 3:30  
375 Science Classroom Bldg.

**PATRONIZE**  
OUR ADVERTISERS IN  
THE STUDENT DIRECTORY  
YELLOW PAGES

## ANNOUNCING our CAMPUS BRANCH OFFICE

411 14th Ave. S.E., 2nd Fl.

331-3165

March On Over To DINKYTOWN For Your Contact Lenses — ONLY \$99.50

COMPLETE OPTICAL SERVICE

MINNEAPOLIS CONTACT LENS AND OPTICAL COMPANY



- Downtown Dayton-Radisson Arcade 27 S. 7th St. 336-8673
- Campus 411-14th Ave. S.E. 331-3165
- New, Thinner Plexicon Lenses
- Trial Fitting No Obligation

School to offer degrees in agriculture, business

# Wilson will dedicate Technical Institute today

By JAMES GUSTAFSON

The University Technical Institute—the first of its kind in the state—will be dedicated today in Crookston by Pres. O. Meredith Wilson.

The Technical Institute offers two-year, terminal programs in business and agriculture for those seeking college-level training of less than four years duration.

AS PART OF dedication week activities, Wilson will give a convocation address this morning.

The college replaces the Northwest School of Agriculture, which is now being phased out after 70 years of service to northwest agriculture. Classes started in September with a freshman class of 175 and a faculty of 25.

Keith N. McFarland, assistant dean of the Institute of Agriculture, said the Technical Institute is handled administratively as a department of the Institute of Agriculture.

ALTHOUGH STUDENTS may transfer to other institutions following the two-year program, the school is designed as a terminal self-contained program, he said.

The institute has been established with three specific objectives in mind: occupational competency, responsible citizenship, and personal growth.

It will blend technical training in business or agriculture with a strong program of general education—all at the college level. Students graduating from the institute

will receive an associate degree in either agriculture or business.

STUDENTS MAY major in four separate areas in the agriculture and business divisions. Specializations in agriculture include agricultural operations, technology, finance, and agri-business. Agricultural science will be taught by the professional staff of the Northwest Agriculture Experiment Station also at Crookston.

Specialized programs in the

business division will include accounting, marketing and merchandising, small business administration, and executive secretarial training.

Future additions to the curriculum may include agricultural engineering and food service management, according to McFarland. These additions would be subject to legislative approval, however.

The 1965 state legislature authorized the new college with its

38 acre campus one mile north of Crookston. The campus has 15 buildings, including a new classroom and laboratory building, arranged around a center mall.

Marcello C. Agostinapolis Says:  
**THE YELLOW PIANO**  
"Is the Primary Existent"  
321 14th Ave. S.E. 331-8096  
Third Floor

## Who's been sleeping on Northrop's steps?

Two Delta Tau Delta fraternity pledges spent a cold night on the steps of Northrop Auditorium Monday night in order to be the first in line to purchase tickets to the Greek Week benefit concert Jan. 14 in Northrop.

Terry Mullens and Al Rubenstein, CLA freshmen, volunteered to spend the night after having been told by the fraternity they would have to be in line "very early in the morning."

Rubenstein said he and Mullens arrived at Northrop at about 1 a.m., found the doors locked, and had to spend the night outside with "a sleeping bag and a couple of blankets."

Rubenstein admitted it was a little cold during the night, but added he and Mullens discovered "one door left ajar on one side that led into a little foyer." He said they went in from time to time and turned up the radiator to keep warm.

We Five, best known for their record "You Were on My Mind," will appear at the concert.

Tickets, which range in price from \$2 to \$4, are available at Northrop Auditorium.



This Is  
A  
With-It  
Cat.  
What breed  
of cat  
are you?

One of the distinguishing marks of the With-It Cat is his cool, confident smile. It comes from knowing the score, from grasping early what other cats seem to take forever to understand. Things like how important it is to plan for a career.

Our Campus Internship Program represents just such an opportunity—to plan for a career in insurance sales and sales management and earn while you learn. Of this company's top 50 agents—a group with incomes impressive by any standards—22% began exactly this way.

To the With-It Cats this will be a word to the wise. They'll stop by or give you a call to find out more about it. As for that other breed... well, one day maybe they'll get with it, too.

MARK M. MOORE, JR., C.L.U.  
General Agent

1611 Park Avenue So.  
Minneapolis, Minn. 55404  
339-8127

PROVIDENT  
MUTUAL LIFE  
INSURANCE COMPANY OF PHILADELPHIA

## If you're under 25 with sideburns to burn, you need this dial.

If you're under 25, chances are you've got sideburns to burn. Longer than your dad's, shorter than some, but highly likely to grow out of control between trips to the barber.

If you use the new REMINGTON® 200 Selectro\* shaver, they won't. And your cheeks won't be left with bloodstained slits, either.

Here's why.

The REMINGTON 200 Selectro shaver has a dial with a special position just to trim sideburns. Click to number 5, and out comes the biggest pop-up trimmer ever. It's designed to trim sideburns straight, even and neat—without the risk of bloodletting, cheek slits or pain. It keeps them looking just as you want them to. Any style, any length, tapered, angled or curved.

The trimmer works well on the back of the neck, too. All you need is a second mirror and in a flash last week's scraggly growth is gone.

There's a special position just for your neck, too. Number 1.

It's designed to protect the tender skin of your neck—the skin most shaving devices cut, scratch, redden and irritate.

The rest of your face needs this dial, too—to protect it.

The REMINGTON 200 shaver will keep your skin from being chewed up and turned crusty by shaving.

Just turn the dial to positions 2, 3 and 4, the cutters raise up and adjust to your beard. You'll get a close, clean shave, tough beard or not-so-tough, whether you're just touching up your lip or shaving your whole face for the first time in three days. Because the REMINGTON 200 shaver has a bigger shaving surface, you don't rub and scrub your skin raw red to get a close shave.

Click to 6, and the side panels flip open for the easiest cleaning in electric shaver history.

The price. The good news is that it costs less than most ordinary shavers that figure if a man under 25 has sideburns, he's on his own.

REMINGTON 200  
Selectro Shaver  
BRIDGEPORT, CONNECTICUT  
SPERRY RAND CORPORATION



SELECTRO: Trademark Sperry Rand Corporation.

©1966 S.R.C.

## DIAMONDS



UP TO 50% LESS  
THAN RETAIL

A Selection of  
\$8,000.00 Worth  
of Mountings  
From Which  
to Choose

AMERICAN DIAMOND  
IMPORT COMPANY

417-18 UPPER MIDWEST BLDG.  
5TH & HENNEPIN, 332-1771

On Vietnam, MSA

# Students air gripes

Soapbox Forum, the University version of Speakers' Corner in Hyde Park, London, attracted about 250 students during the two-hour session yesterday in the Union.

Topics ranging from Vietnam to the price of hamburger were introduced by 12 University students who expressed opinions.

ONE IMPROMPTU speaker, who wished to remain anonymous, had several complaints attacking Plant Services for charging so much for hamburger meat in addition to slow service. "It's still cold on that dumb bridge!" he added.

He also made a statement on Vietnam. "If you took all the money we spend in Vietnam in two weeks, we could buy each of the 5,000 Viet Cong a new car and a three-day holiday, and the war would be over."

Two members of the University debate team, Warren Wolter and Bruce Pederson, broached the Vietnam issue. Wolter maintained that the military war in Vietnam "hasn't been successful, isn't successful, and never will be successful," Pederson countered that there are political, psychological, economic, and military reasons for remaining in Vietnam.

WOLTER SAID U.S. forces in Vietnam are fighting the popular support and pride of nationalism in Vietnam and, as a result, other countries are becoming increasingly critical of U.S. policy. "We are

risking our own security. Our action in Vietnam is politically unwise and militarily unsound," Wolter said.

Pederson disagreed saying the U.S. forces have been very successful recently. He went on to say, "American foreign policy must enhance American collective security." Part of this, he said, is maintaining our other military bases in Southeast Asia and protecting important Asian trade routes.

JOHN EDMUNDSON, IT sophomore, assaulted the new election rules set up by the Minnesota Student Assn. (MSA). He also stated that few people are interested in MSA. MSA Pres. Howie Kaibel, claimed that "apathy with MSA exists as a figment of Edmundson's imagination."

Problems concerning pre-marital sexual relation brought contradictory responses from two students. One said the decision was up to the couple and the other questioned the justification of such acts after a couple "broke up."

## CLIC . . .

(Continued from Page 1)

MacGregor suggested remote parking lots for students, bus systems, and a mass transit system as possible solutions to the traffic problem. Much of the traffic on the new street would be caused by the University.

"THE UNIVERSITY has more and more students each year and this means more and more cars," MacGregor said. "The streets are not large enough to handle them even though we've eliminated traffic and used semaphores to speed-up and regulate traffic."

The council will consider the task force's recommendation during the next four weeks, MacGregor said. It will be presented to the Committee on Council for Initial Action.

## Labor . . .

(Continued from Page 1)

LAST NIGHT former Gov. Andersen said he has not wanted to make a public statement on his availability for the position. However, he said, "I can't imagine anyone who would not consider it an honor to be a member of the board."

Neil Sherburne, AFL-CIO secretary-treasurer, has frequently been mentioned as a 4th District candidate for the board.

### Summer Jobs in Rockies

Over 2,000 resorts, dude ranches, summer camps, national parks, construction companies, etc. shown in 1967 Rocky Mountain Summer Employment Guide. Also: how to get free transportation to these areas and information on summer stewardess jobs (U.S. and overseas). Only \$3, money back guarantee.

University Publications, Dept. H12  
Box 20133, Denver, Colorado 80220  
Please rush my copy of the Summer Employment Guide. Payment of \$3 is enclosed.  
NAME \_\_\_\_\_  
ADDRESS \_\_\_\_\_

**READ and USE  
WANT ADS  
REGULARLY**

## ADVENT VESPERS

Wed. Morning  
7:00 P.M. Wed. Eve.

UNIVERSITY LUTHERAN CHAPEL  
and Student Center  
1101 University Ave.

Psychology grad student says

# Science needs ESP research

Reliable testing in extrasensory perception (ESP) research needs were described in a discussion sponsored by the Minnesota Society for Parapsychological Research (MS-PR) last week on campus.

Joan Axtell, graduate student in educational psychology, said a subject's performance in an ESP test differs from day to day. Variables like mood, attitude of the subject toward the test, and "even the weather" can influence a person's perceptive ability, she said.

CURRENT unreliability in ESP testing makes it difficult to generalize about supposed relationships between ESP and creativity, intelligence, or other personal characteristics, Miss Axtell told the audience of 25 persons.

"We do know, however, that there is no connection between a person's perceptive ability and his age, sex, health or the influence of drugs," she added.

Reliable ESP tests, according to Bob Joesting, CLA senior, would bring the study of ESP, or parapsychology, to a "more scientific, predictable level."

JOESTING DEFINED the reliable test as one which gives the similar results repeatedly after the subject has taken it. Present tests have not been perfected to give stable and predictable results, he said.

Subjects trained to produce reliable results in ESP tests, Joesting

said, could predict events in the future, aid the government in military missions, or prove valuable in the space communications program.

Joesting also said ESP-trained subjects could be trained to diagnose illnesses. One subject, Thomas Cayce, who died nearly 20 years ago, prescribed drugs that had not yet been invented in his sleep, Joesting said.

DISCOVERING the "reliable test" is one of the objectives of MSPR. Research is being conducted at Duke University through grants, but experiments are conducted by volunteering University students.

## Ed majors set camp retreat

Students and faculty in the College of Education will hold a retreat from 7:30 p.m. Friday through 3:30 p.m. Saturday at Camp Courage.

Enrollment is limited to the first 100 students and faculty signing up.

Activities during the day include an opening address by Robert Keller, dean of the College of Education, and a panel discussion by graduates from the College of Education.

**100  
TYPEWRITERS  
FOR SALE  
OR RENT  
EXPERT REPAIRS  
PE. 1-7277**



**KIRK**  
617 S.E. 14th Ave.  
(3 Blocks from Campus)  
Easy Parking in Driveway

## Last Call for Senior Pictures

Seniors have until this Friday to have their picture taken for the Gopher Yearbook. There is a \$3 sitting fee which can be applied toward the purchase of a yearbook.

Dayton's Photo Studio is located in the Museum of Natural History and will be open from 8 to 4:30.

Register NOW for courses in

# ELECTRONICS

Enroll early for Winter classes

The Electronics Technology course is the master technical education program at Northwestern, designed to prepare graduates for ready employment as upper level technicians in most branches of the electronics industry.

STARTING DATES

Evening School:

- Electronics Technology ..... December 12
- Transistors (Industry Oriented) ..... January 9
- Computer Programming ..... January 9


Day School:

- Electronics Technology ..... January 9

approved for GI training  
Phone 721-2469 or write for new catalog

## NORTHWESTERN ELECTRONICS INSTITUTE

—A Non-Profit School—  
3800 Minnehaha Ave. So. Minneapolis 55406  
MEMBER: National Association of Trades and Technical Schools



**NITE CLUB AT NOON**

Featuring

## The Cumberland Singers

**TODAY**

11:15-12:15 CMU-MBR  
Free Hot Chocolate

Folk Comedy Blues Jazz

In response to salary protests, resignations

# Civil service, U nurses discuss new contract

By HARRY ENGEL

A three and one-half hour meeting last Friday was the first of several to acquaint nurses and the Civil Service with the elements involved in negotiating a new contract for University Hospitals' nurses.

Recently, Twin City nurses, represented by the MNA, voted mass resignation from area hospitals effective Dec. 26, unless the hospitals reopen contract talks. Many nurses have already handed in resignations to the 21 hospitals the MNA represents in this area.

FRANK F. PIEPER, director of the University Civil Service, and hospitals nurses and their representatives from the MNA discussed the structure of the University personnel service and the problems of recruiting new nurses and re-employing old nurses.

Nurses feel that present salaries are not high enough to attract and retain nurses for the area. When the Twin City Hospitals Association (TCHA) suddenly increased salaries earlier this month, University nurses protested.

According to nurses, the increases, which came after two meetings between the TCHA and MNA, were in bad faith; negotiations were still in progress.

THE TCHA SAID, however, that the two meetings did not constitute negotiations since the present contract for nurses does not terminate until May of next year.

University nurses, who voted to have the MNA be their sole bargaining agent in October, are not involved in this dispute but have sent one member to meetings the MNA has held as a "laison of communication," according to

Head Hospital Nurse Ann M. Maher, who acts as "something like a chairman" for the local unit. Her primary role is communicating with the various parties involved in negotiating a new contract. The unit makes its own decisions with the "counsel and guidance" of the MNA.

Friday's meeting the nurses were acquainted with the Board of Regents' rules, civil service rules and the structure of salaries. Salaries must be equal to those offered for similar positions by the State Civil Service.

The Civil Service was acquainted with the problem of recruiting new nurses and re-employing old ones.

THE PROBLEM of recruiting at the Hospitals was discussed.

Pieper imagines there will be several more such meetings acquainting the participants with the matters involved in negotiating.

The proposals concern higher salaries to attract nurses and benefits to build up the level of one to two-year nurses who have the highest turnover here, Miss Maher said.

Twin City nurses are seeking

\$541, \$591, and \$641 salaries for general duty, assistant head nurses, and head nurses, respectively. The TCHA raised salaries from \$411 to \$475, \$426 to \$505 and \$451 to \$545 respectively when they unilaterally raised salaries.

Starting salaries are higher than the minimum because of the competition for nurses, Peiper said. The Civil Service recruits country-wide, he said.

PEIPER SAID higher salaries are provided because nurses in the Hospitals must work with patients with more serious illnesses, and because they are responsible to the University medical research and teaching staff.

Senior general staff nurses now

have a salary range of \$433 to \$526 a month.

Assistant head hospital nurses have a salary range of \$468 to \$569 a month.

Head hospital nurses have a range of \$506 to \$616.

GENERAL STAFF nurses get a \$433 monthly starting salary for those with a three-year diploma and \$450 for those with a 4-year degree.

Senior general staff nurses start at \$450 for those with a three-year degree and \$468 for those with a four-year degree.

Assistant head hospital nurses start at \$487 and head hospital nurses start at \$526. Both must have a four-year degree, he said.

## Air pollution unlikely to plague Twin Cities

There is little chance that the polluted air conditions which plagued the East last week could occur in this area, Dr. Harold Paulus, assistant professor of public health, said yesterday.

He said pollution in the East was caused by a temperature inversion in which a layer of warm air above a layer of cold air trapped the pollution in the city. The temperature inversion lasted for several days, resulting in thick smog, he said.

"The recent fog which engulfed the Twin Cities contained conditions for a serious problem of pollution, but the inversion did not last," he said.

PAULUS SAID there are two reasons such a condition is not likely to occur in this area. First, there hasn't been a temperature inversion lasting longer than 24 hours during the last six years. Second, this area does not have the number or type of sources of air pollution New York has.

Paulus listed high population density, high industrial density, a

great number of vehicles, and particularly oil refineries and chemical plants as the major sources of air pollution.

"THE REASON the temperature inversions don't last much more than 24 hours here is that the air fronts move through much more rapidly than the stagnants fronts in New York," he said.

Temperature inversions usually begin in the evening around 4 or 5 p.m. and last until the next day when wind disperses the air, he said. They usually occur in the fall and spring.

The cold ground during these periods cools the air immediately above it faster than it cools the air higher up, he said. These inversions are less likely to take place in the winter.

Paulus said the University has been doing research with air pollution for the past six years. The amount of sulphur dioxide and dust in the air is determined and temperature inversions are calculated from reading taken at the KSTP television tower.

**Robinson's "Get Acquainted" Special**  
**SHAMPOO AND SET .. (with this coupon) .. \$1.00**  
 Monday through Thursday During November  
 BY QUALIFIED STUDENTS UNDER EXPERT SUPERVISION  
 NAME ..  
 ADDRESS ..  
 TEL. NO. ..  
 1413 S.E. 4th St. (Dinkytown) 331-5981

**coffee heads:**  
 all you can drink 20c (food too)  
 —not to mention our groovy new chess table  
 —contemporary works of art  
 —live music — blues, jazz, classical and folk (open stage Wed. & Thur.)  
 —stimulating guest conversationalists  
 —and of course our Victorian wallpaper & Tiffany shades  
**COFFEE HOUSE EXTEMPORE**  
 2200 Riverside, West Bank  
 Open from 8 p.m. 'til Closing Wed. thru Mon.

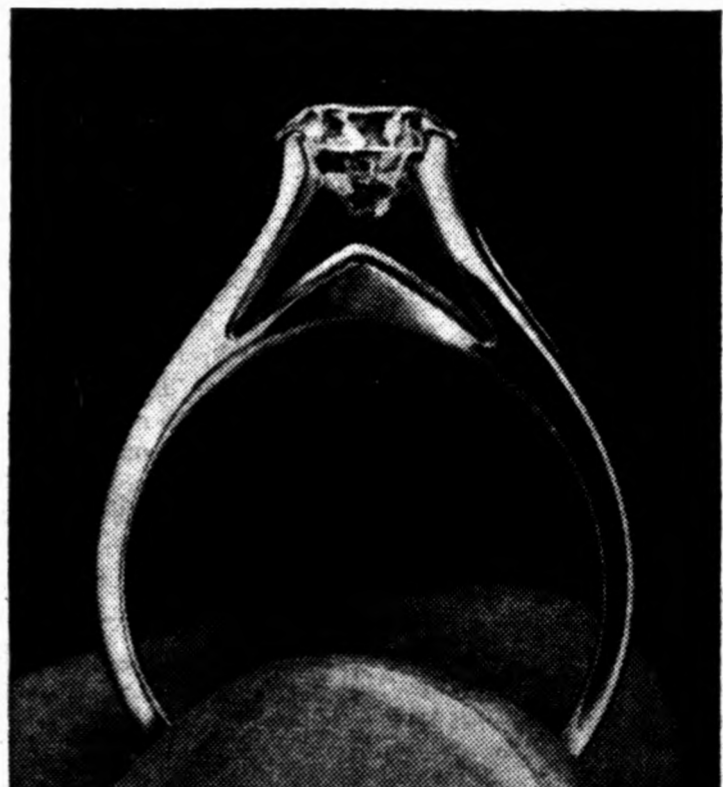
**THE ACTION IS AT 29th AND NICOLLET**

**Magoo's PIZZA BIERGARTEN**  
**BEER • PIZZA**  
**ROCK'N ROLL DANCING**  
 Mon.-Wed.—Dave Brady and The Stars  
 Thurs.-Sun.—The Soges  
 PLENTY OF NO-BEER ACTION FOR THOSE UNDER 21, TOO!  
**TENDER TRAP MINIATURE GOLF COURSE**  
 Make the Tender Trap Miniature Golf Course your first or last stop of the evening.

**TWIN CITIES' ONLY YOUNG ADULT NIGHT CLUB**  
**ROCK 'N ROLL BANDS**  
 Fri., Dec. 2—The Castaways  
 Sat., Dec. 3—The Stillroven  
**mister Lucky's**

**Sorini's Midway Pizza**  
 1569 University Avenue  
 Just East of Snelling  
 ★ Call 645-6122 for Reservations or Take-Outs  
 ★ We Feature the World's Largest & Most Original Pizza Menu  
 ★ 39 Different & Distinctive Kinds of Pizza  
**REDEEM THIS COUPON FOR 50¢ off**  
 The Large Pizza of Your Choice Plus Free Beverage with Eat-in Orders Mon.-Thurs.  
 (Limit: 1 Coupon Per Pizza)  
**Our Slogan**  
 "No Better Than the Best, but Better Than the Rest"

**ARE YOU SURE YOU KNOW WHAT YOU'RE DOING?**



People in love have a crazy way of getting wrapped up in each other and forgetting about everything else. So, unless you want to make a mistake, forget about love when you're buying a diamond ring.

If you'd like some expert help, in fact, go see your ArtCarved jeweler. He has beautiful diamond rings from \$150 to over \$1000. Every one has a gemologist's evaluation inscribed on the inner band. Every one is guaranteed.

So don't get emotional at a time like this. Get careful. If you don't know anything about diamonds, see your ArtCarved jeweler. He does. **ArtCarved**

See Dream Diamond Rings only at these Authorized ArtCarved Jewelers  
**Ardell Jewelers**  
 710 Hennepin, Minneapolis 422 Cedar Ave., St. Paul

# License change for cafe looks doubtful, say owner, officials

By **GLENN HOVEMANN**  
Dancing, singing, and a piano bar on Washington Ave. depend on whether Alderman Robert MacGregor approves a class A license for the Big Ten Cafe, according to George Mulner, owner and operator of the cafe.

The licensing committee of the Minneapolis City Council rarely grants a permit unless it is endorsed by the alderman of the ward affected. The committee is required, however, to base its decision on a petition of approval it must present to all residents within a 200 foot radius of the business seeking the license.

Hennepin Ave. type of entertainment, about which some of us in this city are very concerned."

Mulner had earlier said he was willing to restrict entertainment nights, but asserted that if he got the class A license he "would exploit it to the fullest of the law." He wants to have music for a "Sing-A-Long."

Mulner said that although a class A license permits "practically anything," a class B license forbids more than one non-vocal entertainer, singing by the customers, and dancing. "We can do practically nothing," he said.

Mulner said he does not know of any serious opposition among residents who would be covered by the petition.

**THE WAY THINGS** look now, there will be no live entertainment at the Big Ten.

80 per cent of whose customers are connected with the University.

Several years ago, the Big Ten had entertainment attractions, but a change in licensing law made singing and dancing illegal under a class B license, which the Big Ten operates under.

"MacGregor has a 'thing' about alcohol, cigars, Playboy — he's against the whole bit," Mulner said, claiming that only MacGregor stood in the way of his class A license. Mulner does not know when his request will come up for consideration.

**MACGREGOR SAID** the Big Ten still has entertainment, and is fearful of it degenerating into "the



Mulner



MacGregor

# Foreign service group to recruit student workers

The International Volunteer Services, (IVS) a private organization similar to the Peace Corps, will be on campus Thursday and Friday in 102 Burton Hall recruiting.

IVS is a non-profit organization founded in 1953, according to Robert Rannells, coordinator for the placement inquiries clearance office.

Rannells said yesterday the group feels youth can make an important contribution to international goodwill through personal contact by working in foreign countries.

IVS will provide all expenses and a draft deferment during the two years of service, in addition to the \$80 a month salary, Rannells said.

The group is having a program noon, Thursday Dec. 1, at the University Campus Christian Fellowship Hall. The topic will be the IVS program in Vietnam.

## Xerox Copies

As Low as  
5c Per Copy  
(Lowest Prices in Town)

**BACHMAN**  
DOWNTOWN LETTER  
SERVICE  
603 2nd Ave. So.  
FE 9-9518

NOT

**ONLY TONIGHT**  
but EVERY NITE (except Sun.)  
**YOU CAN JOIN THE (IN) GROUP**

AND THEIR FRIENDS FOR THE FINEST IN DRINK AND FOOD TO SUIT YOUR OWN TASTE.

the **MIXER'S**

FOR THE FIRST TIME  
ENGLISH LANGUAGE VERSION

It rocked the critics and shocked sophisticated Europe... Now uncut uncensored for all to see!

Federico Fellini's  
**LA DOLCE VITA**



Starring  
Marcello Mastroianni  
Anita Ekberg

Starts TONIGHT!  
FEATURES AT 7:00 & 9:55

**UPTOWN**  
HENNEPIN & LAKE STREET  
827-4900  
Park Free At Girard & Lagoon

## AVALON

LAKE ST. & BLOOMINGTON  
PA 4-1232

ADULTS ONLY  
CONTINUOUS FROM 2 P.M.

"Sinderella and the Golden Bra"

NUDIE MOVIE DONE IN OPERETTA STYLE

PLUS...

"G" GIRLS

## JOKERS WILD JOKERS WILD

TUES.  
WED.  
THURS.

You Voted for Them in the ALPS POLL

**We've Got Them Back**

The Greatest New Show Band in the Midwest

TUES.  
WED.  
THURS.



494 & CHICAGO  
BLOOMINGTON

**JOKERS WILD JOKERS WILD**



494 & CHICAGO  
BLOOMINGTON

## The New Orleans Jazz All-Star Jazz Band TONIGHT

Featuring

Johnny Wiggs  
George Lewis  
Louis Nelson

Sammy Penn  
Joseph Butler  
Charlie Hamilton

Admission \$1.00

**MBR**  
JAZZ WORKSHOP

8:00 P.M.  
UBOG

Sooner or Later... You'll Fall in Love with "A Thousand Clowns"

HELD OVER!  
3RD WEEK!



Recommended For Viewing by—Twin City Town Meeting!

Jason Robards Barbara Harris.  
"A Thousand Clowns"

Features at 7:20 & 9:45

**Varsity**  
13TH & 4TH STREET S.E.  
331-2492

Starts Tonight at Sub. World

"AMONG THE GREAT MOVIES OF ALL TIME, REGARDLESS OF SUBJECT!" —Life Magazine

"A crescendo of excitement and involvement!" —Cronker, N.Y. Times

Starts Tonight!

the Gospel according to St. Matthew

Features at 7:10 & 9:40

**CAMPUS**  
OAK & WASHINGTON S.E.  
331-5600

Park Free Across the Street

Recommended For Viewing by—Twin City Town Meeting!



# Clergy explain merits of school of religion

Students have no clear understanding of religious traditions, Father Donald Conroy, asst. chaplain of Newman Center, said yesterday.

Father Conroy was the guest speaker at the first of a series of open hearings concerning the establishment of a department of religious study at the University. Forty-one people attended the hearings which are sponsored by the Committee for Educational Development of the Minnesota Student Assn.

## Explorer-lecturer will narrate movie on Lebanon tonight

Ralph J. Franklin, explorer, lecturer, and author, will narrate the film "Lebanon: Land of the Phoenicians," at 8 p.m. today in Mayo Memorial Auditorium.

The program, which includes Arabian pageantry, dancers, and refreshments, is sponsored by the Arab-American Club.

The film traces Franklin's journey through Beirut, Lebanon; Tripoli, Libya; the Phoenician port of Tyre, ski villages, Roman ruins at the Temple of Baalbeck, and the Grotto of Jeita. It is in wide-screen color and stereophonic sound. Franklin will discuss Phoenician people, education, production, business, and government during the film.

Arabian guests and University students are invited. Tickets cost \$1 for students, \$1.50 for adults, and \$.75 for children.

## Dental student receives award

Mrs. Velma H. Dyck, a sophomore in the School of Dentistry, was presented with a plaque from the American Dental Assn. (ADA) for a laboratory research project entitled "Protection of Anterior Filling Materials."

Mrs. Dyck received the plaque at the annual meeting of the ADA in Dallas. She was one of 10 winners of the national award.

"IF WE FAIL TO study religious tradition, we fail in our responsibility as historical men.

"I see a large group of very bright future leaders in our society who are severely hampered by their ignorance of their own and others' religious tradition," Father Conroy said.

One complaint of the clergymen present was that those faculty who include theology in their courses do not really understand the theology which they discuss. "I would prefer to study Luther from a Lutheran theologian because he would be more sympathetic to Luther," Father Conroy said.

He said courses under a department of religious study could include a study of the Prophets, the Pentateuch, the history of scriptural thought, and the study of certain men who influenced religious tradition such as Martin Luther and John Calvin. He added that courses in atheism and eastern religions could also be included.

**MOST OF THE** clergy agreed that the biggest problem in establishing a religious studies department is economic. What costs would be involved in forming this new department? And where will the money come from? "There is no easy solution," Father Conroy said.

Several ideas for recruiting faculty for the new department were mentioned. Father Conroy presented the idea of bringing in clergy from community churches at the churches' expense. Father Russell Hatton, chaplain at the Episcopal Center, said there are some competent faculty already at the University who could teach theology in the new department.

The next hearing will be held Tuesday at 3:30 p.m. in the women's lounge of the Union.

**NIGHT OWLS!**  
**OPEN TILL 4 A.M.**  
 • B-B-Q RIBS • CHICKEN  
 • STEAKS • SEAFOOD  
 TAKE-OUT ORDERS  
 Call 339-9550  
**PIC-A-RIB RESTAURANT**  
 529 Washington Ave. North  
 Closed Sundays

**David's**  
**Gemologists-Jewelers**  
 14 South 7th St. Minneapolis  
 Open Monday & Thurs. Eves.

As Cornelia, famed mother of Ancient Rome, said of her children . . . "These are my jewels." A graceful and elegant symbol of pride in motherhood, this Mother's ring is fashioned in 14K gold, Florentine finish, smooth inside against the finger and set with synthetic birthstones . . . one for each child or grandchild. Truly a lasting treasure.

**Priced from \$18.50**  
 (\$3.50 for each additional stone)

**\*Special Student Discounts**  
**\*Prices to suit each student's budget**

## New national chapter started

# Fraternity seeks members

By **JEAN DEVILLIERS**  
 A new academic fraternity, Delta Sigma Phi, is looking for members. **THE FRATERNITY**, with 108 chapters, has its headquarters in Denver. Dale Alexander, field secretary in charge of expansion of Delta Sigma Phi, contacted the Interfraternity Council in October and inquired about establishing a Minnesota chapter.

Mike Posnick, CLA junior and Interfraternity Council (IFC) vice president and director of expansion, explained IFC policy. "We are trying to increase the size of the Greek system by building up the membership of present fraternities and adding to the number of fraternities. This will create more choices for the rushee and encourage competition among fraternities."

According to Posnick, Delta Sigma Phi chose to colonize at the University because there are many potential members, IFC policy encourages new fraternities, and the

University looks favorably upon fraternities. Posnick pointed out that on many occasions Dean of Students E.G. Williamson has said that if there were no fraternities at Minnesota, he would find it necessary to create them.

Delta Sigma Phi has been in the process of colonizing since last week. Posnick said, "IFC supplied names of men we thought would be interested in joining a new fraternity." Additional names are being supplied by IFC from rush lists of the past two years. Twin City alumni of Delta Sigma Phi are also submitting names.

A **SMOKER**, fraternity equivalent of a sorority rush tea, was held Sunday, Nov. 20. Alexander explained fraternity life and colonization. Four men have pledged, and according to Posnick, the fraternity will purchase or rent a house when there enough men to support it.

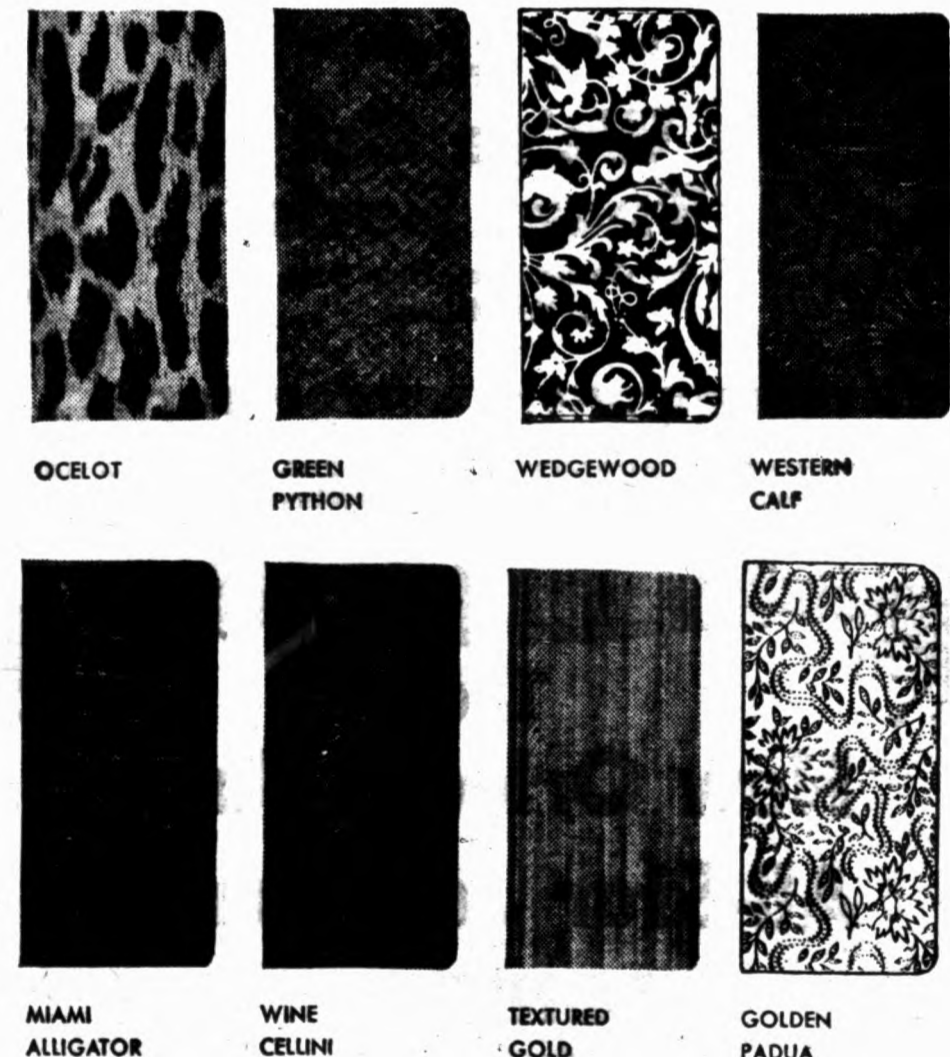
Posnick explained some of the advantages of pledging a new

house. "Members have a chance to make the house what they want it to be. A man may gain vast experience in the development of leadership and organizational qualities. It also offers new opportunities to a man who has gone through rush and hasn't found what he wants in a fraternity."

Interested men may obtain additional information at the IFC office, 203 Union.

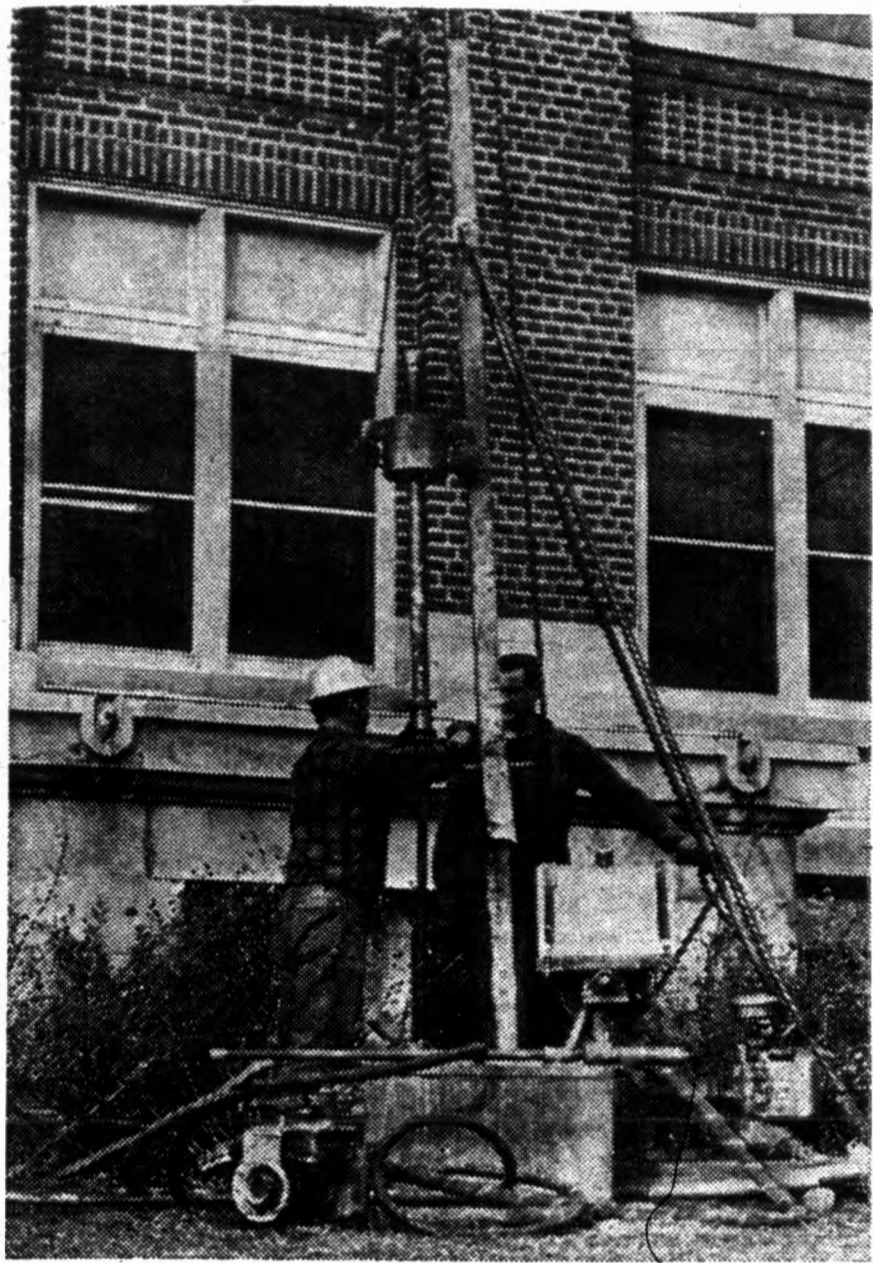
**Pinata Making Demonstration**  
**Free**  
**Thursday**  
**December 1**  
**2:30**  
 CMU — International Lounge  
 UBOG American-Foreign Students Committee

## design your own check stationery with University Bank's Imperial 200 checking



Choose from 8 smart colors and textures in checkbook covers . . . mix-or-match with your choice of 6 distinctive check paper colors, personalize with your name and address and you have check stationery that's as personal as your signature. Imperial 200 is an exclusive check service of the University Bank. No minimum balance is required. Only 10c per check.

**University NATIONAL BANK**  
 WASHINGTON AT OAK ST. 331-5901  
 MEMBER FEDERAL DEPOSIT INSURANCE CORPORATION



### Machine replacement

Workers Arnie Kulhanek and Jim Saugestade bring in a 10-ton machine to replace the machine pictured. The rock shale was too hard for the lighter machine to penetrate. The men are taking core samples for the new chemistry laboratory.

### U sets up memorial fund for DeWitt

A memorial fund scholarship program has been set up in honor of Norman J. DeWitt, Classics Dept. professor who died recently. According to Jean McCord, of the Memorial Fund office, donations for the fund have been pouring into the office from all over the country.

"Along with their contributions the donors have attached little notes saying that he was a good teacher and a good man. This is unusual because generally only a check is sent," Miss McCord said.

DeWitt's name will be inscribed in a book of honor containing up-to-date accounts of all those for whom memorials have been established.

Donors receive personally typed letters expressing thanks, an engraved card noting that they have given, and a receipt. The card may be sent to the deceased's family to inform it of the gift, Miss McCord concluded.

Will have free distribution

## Greeks to publish magazine

The magazine for fraternities and sororities, the Minnesota Greek, will soon be published for the first time this year.

According to Greek editor Chuck Porter, a CLA sophomore

from Sigma Alpha Epsilon fraternity, the magazine was "new last year, and because there was no continuing program we just about had to start all over to get it going this year."

By the end of next week Porter hopes to have the 16-page magazine ready for free distribution.

In the first issue the cover story will deal with west bank expansion, Porter said, and each subsequent issue will also be based on a theme.

"The cover story each month is going to be controversial to a certain extent. The magazine is not going to be bland," Porter emphasized.

By the second or third issue Porter said he wants to have the magazine distributed to non-Greeks too—"the content of the magazine won't be limited to the Greeks," Porter said.

After the November issue Porter said he is going to try to bring

the magazine out monthly; last year the Greek was published only twice.

And, after the first issue there will be additions to the Greek staff, Porter said. The November issue is being put out almost single-handedly by Porter and his business manager, Mike Wick, GC sophomore from Theta Chi.

Some of the new staff members will be underclassmen so that next year's Greek staff won't have to start all over, too, Porter added.

"Last year the Interfraternity Council (IFC) basically ran the magazine and it dealt mostly with fraternities," Porter said. "This year it's going to be run by both IFC and the Panhellenic Council and it will be for both organizations."

Another change from last year: instead of being printed by a firm in Texas the Greek will be published by the University Press, Porter said.

### Fellowships available to graduates who plan to teach college

Applications for Fulbright-Hays graduate fellowships for the 1967-68 academic year must be in by Dec. 12, according to the University graduate fellowship office.

Students with two years of graduate work who plan to become college teachers should inquire immediately at the fellowship office, 307 Johnston Hall.

In order to receive \$225 monthly, plus allowances for travel, tuition, dependents, and research costs, applicants must be U.S. citizens or resident aliens; plan to teach in a U.S. institution of higher learning; have completed two years of graduate study in a U.S. institution; be competent in at least one of the languages of the geographical area with which their studies are concerned; and plan to enroll in a full-time study program approved by the University.

### THE B'NAI B'RITH HILLEL FOUNDATION

1521 University Ave. S.E.

will feature

Rabbi Frederick Schwartz

speaking on

"THE IMAGE OF THE RABBI"

at its Luncheon Forum

12:15 Today

Lunch served from 11:15 to 1:00


## Going to Europe?

Information Meeting on  
MSA Charter and Group Flights

3:30 TODAY

CMU

Women's Lounge



### ACCOUNTANTS COLORING BOOK

COLOR THIS ACCOUNTANT SUCCESSFUL (GREEN\$)

He attended the Academy of Accountancy and completed their comprehensive 2 year program. He found his part-time experience in public accounting while attending the academy, an invaluable experience. He is now a CPA and a partner in the firm. This could be you—Call or write for free information.

### ACADEMY OF ACCOUNTANCY

G. I. Approved Established 1936  
802 N.W. Federal Building Mpls. 55403 339-9635

### PAYCHECKS GROW WITH SKILL

## MINNEAPOLIS BUSINESS COLLEGE

Accredited—Accrediting Commission for Business Schools, Washington, D.C.

**VETERANS WELCOME!**

**MAIL THIS COUPON TODAY!**

Check Your Interests:

<input type="checkbox"/> Private Secretarial	<input type="checkbox"/> Business Administration
<input type="checkbox"/> Medical Secretarial	<input type="checkbox"/> Accounting (C.P.A.)
<input type="checkbox"/> Receptionist Secretarial	<input type="checkbox"/> Salesmanship and Merchandising
<input type="checkbox"/> Office Machines	<input type="checkbox"/> Speed Shorthand
<input type="checkbox"/> Receptionist Clerical	<input type="checkbox"/> Key Punch—IBM and Remington Rand Automation
<input type="checkbox"/> Comptometer	
<input type="checkbox"/> Data Processing, Wiring, Programming	

Mail this coupon for FREE complete catalog or  
**CALL 332-4338**

NAME .....

ADDRESS .....

**Classes Start Nov. 28 - Jan. 3 - Feb. 6**

- COURSES OF STUDY ARE FULL QUARTER
- FREE LIFETIME EMPLOYMENT SERVICE
- COMPLETE OR REFRESHER COURSE
- APPROVED FOR VETERAN TRAINING
- TUITION INCLUDES BOOKS AND SUPPLIES
- FREE LIFETIME REFRESHER PRIVILEGES TO GRADUATES
- DAY AND EVENING CLASSES

### MINNEAPOLIS BUSINESS COLLEGE

Upper Midwest's Leading Business College—Since 1874  
NICOLLET AVE., AT 10 ST.

Kundla scouts Wildcats

# Towering Kansas State looms as tough opener

By DAVID SHAMA  
Asst. Daily Sports Editor

The Kansas State basketball team which will entertain Minnesota Thursday is long on almost all phases of the game, including its 7 ft. 1 in. center.

The Wildcats finished third in the Big Eight last year and have

several returnees, promising sophomores, and junior college transfers. One of those returnees is huge center Nick Pino who averaged 10.9 points per game last year.

"THE WILDCATS are big in all positions and the strongest part of their team is rebounding," said Gopher coach John Kundla yes-

terday. "When we play them Thursday night at Manhattan in our first game we'll get a good test."

After analyzing Kansas State one might conclude that the Gophers match the Wildcats in only one department — games played. The KSU may give Minnesota an indication of its talent and depth if it starts 6 ft. 10 in. Roy Smith instead of Pino.

Smith is a fine defensive player whose early season progress has been hampered by injuries. He didn't start in KSU's frosh-varsity game last week but may be ready for the Gophers.

IN THAT GAME the varsity beat the frosh 107-69 and surprised Kundla with a good fast break. "They definitely have more speed than a year ago," he said.

"It looks like they'll get away from a controlled offense this year and run. Their rebounding allows them to fast break well because they're consistently coming up with the ball and getting rid of it in a hurry."

Two of State's faster guards are Steve Honeycutt and Dennis Berkholtz. Honeycutt is a newcomer, Berkholtz is a returnee.

IN THE FRONT line Kundla believes 6 ft.-7 in. forward Earl Seyfert could be the Wildcats' best scorer. "He and Berkholtz were the leading scorers in the frosh game with 17 points each," he said.

The arrival of Seyfert and Berkholtz may have already solved Kansas State's pre-season offensive problem, lack of outside shooting. Still, Kundla may test their outside shooting with a zone.

Defensively, the Wildcats play a conservative man to man. Kundla says they play well on defense but aren't likely to employ a pressing or switching defense.

Without a superstar, but with many good players, State must be termed a solid team. "Their scoring balance of six men in double figures against the frosh is indicative of their overall team balance," said Kundla.

## 'Epidemiologic investigation?' I-M Dept. has one going now

By BOB GULLA

That "survey" taken during the recent I-M touch football season amounts to something more than "just a survey."

Instead it is a research design carrying the imposing title of, "An Epidemiologic Investigation of Predictor Variables Associated with Intramural Athletic Injuries."

SEVERAL of the facts included under that title are that athletic injuries in varsity, I-M, phy-ed classes and unorganized games are the major class of campus injuries. Of these, I-M touch football has the highest injury rate of the group.

The man heading up the research is Jess Kraus, currently a faculty member in the School of Public Health and a doctoral candidate.

Kraus said of touch football, "It has a rate higher than the combined rates for I-M hockey, basketball and softball. This has been true since 1961."

KRAUS described the current effort as an attempt to discover the variables associated with I-M injuries. "Since the touch football



Field supervisor Norm Ashley .  
It was a long, cold fall at Delta Field

## Miserable Delta Field: it's like home for Ashley

By BRUCE BROTHERS

Delta Field can be a cold and miserable place—and usually is. But with the throngs which participated in intramural touch football this past season, time and space were at a minimum and play had to continue no matter what the weather.

Players had one consolation, though—they could skip the game and stay home. One man who had no choice was Field Supervisor Norm Ashley. Norm could be counted on as the first Delta Field occupant in the afternoon and the last to leave at night.

REMEMBER THE DAY two weeks ago when snow fell most of the day? Who could pick a better time to check on the field supervisor's activities?

Temperatures dived into the 20s as Norm, in a heavy green ski jacket and thick hunting boots, guided his car through Delta's gates and stationed it near the entrance.

Players were already arriving when he had finished unlocking the door to the baseball clubhouse laboratory, one of his

"most important" duties. He handed out equipment to the players and distributed scorecards among the officials. After sounding the opening horn, he settled back into his warm car with a textbook.

"YOU CAN'T STUDY too well here," said the senior geography student. "There are too many interruptions — guys checking out footballs and stuff."

Later, as darkness closed in on Delta's four fields Norm hustled around turning on the arc lights.

He ate his dinner out of a sack there in his car. "For the first three weeks or so I ate at Mac-Donalds," he explained, "but then I decided it would be smarter to bring my own meal from home."

SITTING THERE from 4 p.m. to 10:30 Norm gets quite an opportunity to see all the good teams in action, as well as the poor ones.

When a crowd of about 200 gathered to see the St. Paul Campus Championship contest, he recalled that once earlier "almost 300" had shown up to watch a game between Phi Delta Theta Blue and the Beta Theta Pi Dragons. "Of course the temperature was in the 70s then," he said. "It's gotten down as low as 13."

Besides keeping track of the temperature for his own benefit, he is the official timekeeper and substitute referee. After games he picks up scorecards and copies the scores so they can be broadcast over WMMR.

SOME PLAYERS came over to his car to get a football to warm up before their game. After giving them one, he blew a big air-horn twice, once to halt play and once to start the second half.

Then he climbed into his car and restarted the engine. Does he look forward to hockey season when he can work inside?

His gaze shifted out across snowy Delta. "All I'm looking forward to is a couple of weeks of no work," he said.

### I-M Scores

BASKETBALL

Sigma Alpha Epsilon Lions	87.
Phi Beta Pi	80
Kumquats II	45, Galloping Guppies 24
Territorial IV Horsemen	85.
Fiji Five	Two 26
Car Pool V	54, Palatus Phi 40
Sigma Nu	35, Sigma Chi 30
Territorial III	47.
Phi Rho Sigma Rookies	36
Pai Omega Dents	49, Vulcans Red 48
Alpha Delta Phi	34, Mayo-Goodhus 30
West Five	66, Garty's Gang 40
Delta Lambda	55, Microbiology 42
Cauchy AC	42, Sulta AC 37
Delta Sigma Delta Ameloblata	47.
Kappa Sigma Red	39
Half Fast Nine	54, Sigma Alpha Mu A 40
Phi Gamma Delta	64, Aeneas 82

(Continued on Page 13)

## the fifth down Good fall grades essential to Stephens



By TONY SWAN  
Daily Sports Editor

As is usual for this time of the quarter, University students are beginning the long, anxious wait for grades.

One student who is particularly anxious is Ray Stephens, reserve quarterback on this year's football team. Although football doesn't leave much time for studies, Ray has been working especially hard during the fall to bring his grades up. Not because he's in trouble, but because he'll have to make a big effort to get out of General College before winter quarter.

ORDINARILY, RAY WOULDN'T have to make the jump until the end of spring quarter, when his two years of G.C. would be up. But there's a special reason for the rush.

Ray wants to play basketball, and he's practicing with the varsity right now. Even though he's not in shape for basketball—football requires a different sort of conditioning—he looks as though he could be a starting forward.

"But we don't want to get too excited," cautioned Coach John Kundla yesterday. "Ray looks as though he could play a lot for us, but there's a special problem."

"IF WE WERE TO LIST RAY on our roster now, we'd lose a tender spring quarter. So we'll have to wait to see if he can get out of G.C. after fall quarter. If we were to play him now, and he didn't make it, it could ruin his chances of playing later, not only in basketball but in football."

Kundla said that Ray's strongest sport in high school was basketball rather than football.

"Ray's brother, Sandy, told me that he thought Ray was better in basketball," said Kundla, "and his high school coach told me the same thing. He has great natural ability. He can jump, he's a good rebounder, a good shot, and has a good build."

"BUT AS I SAY, WE'LL JUST have to wait and see."

Regarding the other football player working out with the squad, Chip Litten, Kundla was less cautious.

"He's coming right along," said Kundla. "He's a very strong boy, has a good shot and rebounds well, particularly for a guard. He's got a good background and a lot of poise."

"We plan to take him to Kansas State. He can help us."

### That Griese kid

Purdue's great quarterback Bob Griese was a Big Ten statistical champ in three categories. Described by columnist Red Smith as a "triple-threat who passes with implausible accuracy, place-kicks, and runs like a living flame," Jack Mollenkopf's meal ticket held the passing percentage (.586), passing yardage (1,223 yards), and total offense (1,387 yards) titles for the season past.

Griese's 58.6 per cent showing in passing was the third highest on record. Wisconsin's John Coatta holds the high mark with a 64.2 percentage, set in 1950. Iowa's Randy Duncan completed 59.5 per cent of his passes in 1958.

GRIESE IS ALSO THIRD in all-time passing yardage. Iowa's Gary Snook holds that record with 1,544 yards in 1964 and Tommy O'Connell gained 1,308 yards passing for Illinois in 1952.

Total offense-wise, Griese's 1966 effort is second only to Snook's 1964 total of 1,560.

Although single game records show Griese's name only once, it's an important one. He holds the 1966 leadership for total offense in a single game, with 317 yards, 288 of them by passing, against Illinois.

GRIESE WAS THE LEAGUE'S leading scorer with a total of 81 points. He scored six touchdowns, kicked 33 of 37 extra points, and succeeded on four of six field goal attempts.

### Basketball bonus

While John Kundla and company are struggling against the ill-effects of inexperience, another basketball shakedown is reaching its final stages on campus:

Of the 158 teams which started, there were 15 left going into last night's round of games in the marathon Fall Open basketball tournament sponsored by the I-M department.

The defending all-U I-M champion SAC Greyhounds are favored to retain their Fall Open title, but will face some outstanding players before it's all over. One of the best is SAE's Glen Wirtanen, who is now in night school. Wirtanen has been one of the I-M circuit's leading scorers for the last two years.

ANOTHER NAME IS BILL WINTER of the Hackers. Winter is a St. Olaf graduate and former linebacker with the New York Giants. The championship game will be played next Wednesday.

Str  
So  
"feel  
perin  
art co  
Je  
profe  
versit  
velop  
pose  
the i  
as w  
he sa  
HI  
tion  
their  
with  
"N  
and  
the  
Gate  
To  
tentia  
velop  
ing  
actua  
TF  
team  
that  
face  
surfa  
"W  
sunli  
on a  
can  
terns  
Ar  
p.m.  
nicial  
Bu  
ing a  
Unio  
Co  
p.m.  
"The  
Demo  
En  
Euge  
Politi  
Inf  
die M  
p.m.  
Room  
Lo  
p.m.  
Mi  
ing—  
Mi  
the V  
p.m.  
Unio  
Mi  
meeti  
ME  
ing—  
Me  
p.m.  
Se  
10 p  
UE  
3:30  
Unio  
tourn  
offs.  
Un  
meeti  
Engr.  
Un  
7 p.m  
Visit  
Un  
perim  
for th  
Borb  
1323  
Wedn

Students use lights, mirrors

# GC studies 'psychedelic' art

By MARGE OPHOVEN

Some students "see sound" and "feel color" in psychedelic art experiments in a General College art course.

Jerome Gates, GC associate professor, was picked by the University as part of a team to develop such art in 1953. "Our purpose then was to experiment with the idea of making music a visual, as well as an aural, experience," he said in a recent interview.

HE SAID MOST art appreciation courses seem to fall short of their goal because they only deal with formal aspects of art study. "Most of them deal with styles and never get to what happened to the artist in terms of creating," Gates said.

To give students this creating potential, an art form had to be developed which would bring exciting results, involve large groups, and let a certain number do the actual work.

THE PROCESS Gates and the team developed involves the fact that light striking a polished surface can be reflected onto another surface.

"With a hand mirror catching sunlight, one can trace patterns on a wall; with two mirrors one can set up more complicated patterns," he said.

"For all the complexity possible in this kind of play, most people quickly tire of the activity. This is probably due to the fact that the image cast by a rigid surface such as a hand mirror is limited to only slight variations from the actual form of the mirror," he explained.

"IF THE REFLECTING surface is flexible enough to be bent or otherwise moved during the performance, the images cast become dramatically alive," Gates said.

The basic materials needed for this type of art expression are a light source or sources (slide projectors work well); flexible and highly polished light reflectors (photographers' ferrotype plates), a movie screen or wall to cast the re-

flected light images on; colored light filtering materials to change the color of the light; and other materials to block out light or to cast shadows.

The performers, with their reflectors, face the screen at a distance of 10 to 20 feet. The projectors are placed between the performers and the screen with the light aimed at the reflectors. There should be one person at each light source to change colors with light filters.

MANIPULATION OF the reflectors and color filters results in constantly - changing abstract patterns of color on the screen.

"This kind of activity, like the play with mirrors, loses its appeal rather quickly for the average person. The addition of music dramatically changes this situation and sustains interest," Gates said.

"In addition to giving students aesthetic and creative problem-solving experience, this form of art is a useful teaching aid for illustrating concepts like rhythm in the visual arts and for demonstrating how rhythm in the visual arts relates to rhythm in music and speech," he said.

"It is an especially effective device for helping students understand concepts like abstraction and expressionism in the visual arts."

## Traditional jazz concert set for tonight

The New Orleans Jazz Group will perform at 8 p.m. tonight in the Union main ballroom.

The concert is sponsored by the Union Board of Governors' jazz workshop. Admission is \$1.

## I-M Dept. . . .

(Continued from Page 12)

process of finding those variables that are pertinent to injuries and those that aren't," he said.

"It's a process called marginal evaluation, or more plainly, just basic counting." When that's completed, Kraus will go into an analysis of the pertinent variables. This will be the point where the significant variables associated with the injuries will come forth.

THOSE VARIABLES left are the "predictor variables" used in the design's title. Those are the ones which are capable of predicting with a particular degree of accuracy the conditions in which injuries are likely to occur.

"If one of the predictor variables is a bare wire support, we'd either get rid of the wire support or modify it so that it's no longer a possible injury agent."

Present data indicates that the most common injury is a knee sprain which is defined as "a minor or partial tear of ligamental fibers."

THE SECOND most common injury is fractures. Third highest are bruises or contusions.

Asked whether he thought the observers had any effect on the data, Kraus said, "I doubt that. A few people asked what was going on, but after a while the observers were just taken for granted. I think the project has been a success as far as that's concerned."

In parting, Kraus threw out his final thought: "Any changes made in touch football will be made on the results of the data, not on speculation."

Recommendations for changes to the I-M dept. by Kraus will probably come around the end of spring. Those recommendations will end an effort of some 20 months on Kraus' part and with a doctorate degree for him.

## I-M Slate

Today	
<b>BASKETBALL</b>	
6:20 p.m.	Court
Dugans vs. Architecture Draughtmen	1
Coffman Coyotes vs. Makeups	4
Civil Engineer Wetbacks vs. Viscounts	Wms.
7:10 p.m.	
Bowery Thrush vs. Winner	1
Acacia or Phi Gamma Delta	1
Kappa Sigma Pledges vs. Bogeys	4
Centennial I Black vs. Hackers	Wms.
8 p.m.	
Rangers vs. Southern	1
Beta Theta Pi A vs. Triangle	1
SAC Greyhounds vs. Winner	4
Car Pool V or Phiatus Phive	Wms.
8:50 p.m.	
All Chemists vs. Frontier III	1
Centennial III vs. Frontier VII	4
Medicare AC vs. Winner: Sigma Alpha Epsilon Lions or Phi Beta Pi	Wms.
9:40 p.m.	
Strange Cases vs. Lunchbuckets	1
Theta Delta Chi vs. Evans Scholars	Wms.
<b>BOWLING</b>	
St. Paul Faculty League	
5:30 p.m.	Lanes
Animal Husbandry vs. Agronomy	1-2
Engineers vs. Biochemistry	2-3
Forest Management vs. Crops	5-6
Forest Products vs. Deadwoods	7-8
7:30 p.m.	
Game Birds vs. Horticulture I	1-2
Pedons vs. Horticulture II	3-4
Timber Cruisers vs. Lake States	5-6
Weeds vs. Imperfect Competitors	7-8
<b>Open Ind. League</b>	
8:30 p.m.	
Big Bad Bears vs. Spiffinders	7-8
White Knights vs. Gutter Dusters	9-10
S-S's vs. Dynamic Trio	11-12
Forget It vs. Triple Treat	13-14
<b>Woman's Staff League</b>	
6 p.m.	
Hot Shots vs. Frame-Ups	7-8
Diehards vs. The Palling Stars	9-10
The Cards vs. Mixups	11-12
<b>M.R.H. League</b>	
8:15 p.m.	
Frontier VIII vs. Frontier III	1-3
Centennial VII vs. Territorial IX	4-6
Centennial VI vs. Frontier VII	7-8
Territorial IV vs. Territorial VIII	9-10
Territorial II vs. Frontier I	11-12
Centennial I vs. Territorial I	13-14
Frontier IX	15-16
Centennial VIII vs. Territorial V	16-16

**MARKET BARBEQUE**

Juicy! Hot! Tender!  
**PIT SMOKED RIBS**

"Best in Minneapolis"

Also Steaks • Chicken • Shrimp

OPEN DAILY 2 P.M. TO 3 A.M.  
FRI. & SAT. 2 P.M. TO 4 A.M.  
SUN. 5 P.M. TO MIDNITE

ORDERS 28 GLENWOOD AVE.  
TO GO 333-1028

# WHAT'S DOING

### Today

Arab American Club Film — 8 p.m. "Lebanon, Land of the Phoenicians." Mayo Auditorium.

Business Women's Club. Meeting and speaker—3:30 p.m. 320 Union.

Coffee House Extempore—8:30 p.m. Judge Edward J. Parker, "The Jury System and Court Democracy." 2200 Riverside Ave.

Engineers Club—7:30 p.m. Mr. Eugene Avery, "The Engineer in Politics." Men's lounge, Union.

Informal discussion of the Middle Market Daily—3:15 to 5:30 p.m. Sponsored by ADS. Heggen Room, Murphy Hall.

Logos business meeting—3:30 p.m. 326 Union.

Minnesota Airman's Assn. meeting—12 noon. 343 Union.

Minnesota Committee to End the War in Vietnam. Seminar—7 p.m. Business meeting—8 p.m. 326 Union.

Mitchell Aerospace Society meeting—6:45 p.m. 116 Armory.

MSA Freshman Cabinet meeting—6:30 p.m. 320 Union.

Mormon Fellowship—12:15 p.m. 208 Mech. Engr.

Scottish Country Dancing—8 to 10 p.m. Union Game Room.

UBOG Literary Arts meeting—3:30 p.m. Original poetry reading. Union Fine Arts Gallery. Bridge tournament—8 p.m. ACU Play-offs. 343 Union.

University Flying Club. Business meeting—7:30 p.m. 102 Mech. Engr.

University Toastmasters meeting 7 p.m. Harold Nelson, John Sturm. Visitors welcome. 354 Union.

University of Minnesota "Experimenters"—4 p.m. Recruitment for the Experiment in International Living. Film: "Passport to Understanding." 344 Union.

Williams Arena Ice Rink. Recreational skating—11:30 a.m. to 2 p.m. and 8 to 9:45 p.m. Students admitted free with fee statements. Williams Arena.

### FOUNDATIONS

Inter - Varsity Christian Fellowship. Christian Issues Seminar—12 noon. 325 Union. Dinkytown Area Fellowship Group—4 p.m. Bible Study. 1120 S.E. 5th St.

Lutheran Student Assn. Discussion—2:15 p.m. Denis Wadley, Don Sauer, "School of Theology: The Pros and Cons." Lounge. 15 minute Advent Service—11:45 a.m. and 12:45 p.m. Chapel Council Meeting—3:30 p.m. Conference Room. Vesper Service—7:30 p.m. Chapel, Luther Hall.

Muslim Students' Assn. Fajr prayer—6:30 a.m. Zuhr prayer—

12:30 p.m. Asr prayer—3:45 p.m. Maghrib prayer—4:45 p.m. Isha prayer—9:30 p.m. 411 S.E. Ontario St.

United Campus Christian Fellowship. Bible study—10:30 p.m. Oak Street UCCF Center, 507 S.E. Oak St.

### WEST BANK

U of M Young Socialist Alliance. Socialist Literature table—10 a.m. to 2 p.m. Classroom Building.

### ST. PAUL CAMPUS

SCBOG Monthly Musicale—3 p.m. Joseph McSpadden. Student Center lounge.  
Skeewaksurs—9 p.m. 202 Student Center.

**PATRONIZE YOUR ADVERTISERS**

**It will cost you nothing!**

**FRATERNITY RUSH**

**January 3-6**

**SIGN UP IN 203 COFFMAN**

(Smokers, parties, meals — at least a worthwhile experience for all campus men)

**HAIRCUTS**

The kind you like & want at the **INTERNATIONAL Barber Shop & Studio—331-9828**  
1323 S.E. 4th St., Dinkytown, USA  
Razor Cuts & Other Services by Appointment  
Expert Ladies' Haircutting

**Learn to Fly**

RENTAL & CHARTER FLIGHTS  
SEE THE ALL-NEW AIRCOUPE  
AS LOW AS \$10 A WEEK—\$570

941-3212 *Fleet Air* Flying Cloud Field

Eat in  
OR  
Carry-out!

**"DIGNIFIED" CHICKEN DINNER 69¢**

4 pieces of golden fried chicken and a helping order of french fries.

**Barnful of Chicken—12 pieces—\$1.69**

LISTEN DAILY TO THE ADVENTURES OF CHICKENMAN — WDGY RADIO 1130

**RED BARN RESTAURANT**

OPEN DAILY 11

3207 EAST LAKE STREET  
4900 CENTRAL AVE. WEG  
8901 PENN. AVE. SO

High schools, colleges combine for performance

# Choruses, bands will present musical spectacular

A "Christmas Music Spectacular" bringing together many high school and college bands and choirs will be presented at 2 p.m. and 8 p.m. Thursday in Northrop Auditorium.

All the ensembles of the University Music Dept.—orchestra, band, chorus, Resident Oratorio Choir, Men's and Women's Glee Clubs—will perform, in addition to members from each Twin City area high school.

CLOSE TO 750 persons will participate in the second annual program.

The free program includes one number from Handel's "Messiah" and a medley of traditional Christmas music, according to Robert Fischer, president of the University Chorus.

For the finale, Fischer said, a "music fantasia" bringing together all of the musical groups will be presented.

FOR THE FIRST time this year, letters were sent to the Twin City area high schools inviting a few members from each high school chorus to take part in the performance. Two hundred students responded.

The University Chorus is also practicing the "Messiah" with the Minneapolis Symphony for performances to be given Dec. 16 and 18, Fischer said.

The chorus, Fischer added, is

engaged in more activities this year than in years past. They include Christmas caroling at several hospitals and nursing homes, a New Year's trip to Chicago, and an open house for high school seniors next spring.

SINCE THE QUARTER began, the chorus has held elections, started its own newspaper, created car pools, and planned a special program for local high school students.

In elections held earlier this quarter Doug Campbell, IT junior, was elected vice-president, Joan Brings, secretary, and Ruth Cham-

berlin, treasurer. The newspaper, Notes, comes out weekly and is distributed at Tuesday night rehearsals.

"The University Chorus provides some identification at the University, pride in an organization, and a kind of socialization," Fischer said.

## OFFICIAL DAILY BULLETIN

Notices must be received by noon two days prior to publication and should be sent to Official Daily Bulletin, 217 Morrill Hall. Except for certain notices of unusual campus-wide importance, notices will be printed only once.

Students and staff are urged to read the Official Daily Bulletin as they are answerable for notices that affect them. They are also answerable for information on department bulletin boards.

Vol. 68 No. 62  
November 30, 1966

### ALL STAFF AND STUDENTS

• Corrections for Final Examination Schedule, Fall 1966

All Colleges: VII MWF will take exams at 8:00-10:00 a.m., Wednesday, December 14.

• Hour Examinations: December 13 should be 8:30-11:30 or 1:30-4:30. December 16 is 8:30-11:30 or 12:00-3:00.

Common Examinations: Econ 2—7:00-9:00 p.m. Thursday, December 15.

Fren 1—8:30-9:30 p.m. Wednesday, December 14.

Math 10A—3:15-6:15 Saturday, December 10.

Math 31, 31H, 32, 33—12:00-3:00 Saturday, December 10.

Span 1—6:30-9:30 p.m. Wednesday, December 14.

### • Winter Quarter Class Schedule Changes

Additional Courses  
Geo 216, Seminar: Pleistocene Geology (ar cr; prereq 116, 117) ar

Law 165, Trade Regulation (4 cr) V MWThF, FraH 120

LMed 146, Principles in Electron Microscopy (2 cr; prereq #) I MW, Mayo C295

LMed 147, Techniques in Electron Microscopy (2 cr; prereq #) I MW, Mayo M, ar, sec 2, II-IV W, ar

MedT 146, Principles in Electron Microscopy (2 cr; LMed 146; prereq #) I MW, Mayo C 295

MedT 147, Techniques in Electron Microscopy (2 cr; LMed 147; prereq #) sec 1, II-IV M, ar, sec 2, II-IV W, ar

MuEd 59, Choral Literature, Conducting (1 or 2 cr; prereq 20) V TTh, WuH 320

Additional Sections  
GC 32B, sec 3, IV MWF, NH 107

HE 40, sec 3, Lect V TTh, McNH 38

Lab VI-VIII TTh, McNH 157

Cancellations  
Pay 156, VII MWF, MMA 100

Pay 160, VI MWF, Z 313

Hour & Day Changes  
AnCh 46H, II MThF, ME 302

ChE 219, VIII MWF, ChE 50

Hum 132, sec 3, VI-VII Th, MH 214

Med T 100, VI TTh, MH 213

Phys 235, 10:15-11:30 TTh, ME 4

Credit Corrections  
NPay 231 (ar cr)

NPay 233 (ar cr)

PubH 108 (3 cr)

Room Changes  
Comp 27, sec 2, II MWF, C 315

Engl B, sec 40, V MTWThF, Pt 110

IE 133A, II MWF, ME 221

Math T, sec 8, IV MWF, MurH 308

Nurs 185A, III-IV MW, MH 214

Span 25H, V MTWThF, VH 125

Public Health 210 Seminar

There will be a PH 210 Seminar, "Mass Communications in the Service of the Community," with Mr. John C. Schwarzwald, Executive Vice President of the Twin City Educational Television Corporation, on December 1 at 3:15 p.m. in 100 Mayo.

### CLA STUDENTS

• Cancellation in Last Week

of classes is usually not permitted in this college, except under the most urgent extenuating circumstances. The last week begins on Monday, December 5, 1966.

### ALL STUDENTS

• War Orphan Certification

If required by the Veterans Administration to obtain institutional certification of attendance for purposes of payments under P. L. 634, War Orphans should obtain their certifications at the times and in the manner indicated below:

P. L. 634 War Orphans must be properly in training and certify attendance from November 1, 1966, to November 30, 1966. War Orphans should certify no earlier than December 1, 1966, and

no later than December 7, 1966. No certification means no check.

### PROCEDURE

1. P. L. 634 War Orphans obtain from 7-5496 at 105 Morrill Hall.

2. If you dropped or changed to audit any courses, you are required to present a Last Date Slip (form A126 or the green slip) signed by your instructor involved, showing precisely the last date you attended that class. The necessary forms are available at the same place at which you present your attendance certification form.

3. Report change of address or number of dependents on forms available at 105 Morrill Hall, or 220 Coffey Hall.

OFFICES: For Minneapolis Campus  
1. Information Booth, first floor Morrill  
2. 105 Morrill Hall  
3. Window 18, first floor Morrill Hall.

For St. Paul Campus:  
1. 220 Coffey Hall  
• Notice to Veterans P.L. 89-358, Chapter 34

Veterans registered for less than 1/2 time training or non-deficiency courses must re-enroll for winter quarter at Window 18, Office of Admissions and Records, or 220 Coffey Hall, St. Paul Campus.

"Certificate of Eligibility" for training should be presented with current paid fee statement at Window 18, Recorder's Office, Morrill Hall, Minneapolis, or Room 220, Coffey Hall, St. Paul, to obtain the enrollment certification required for payments of benefits. 14 credits is considered a full load. Graduate students should obtain "student load certification" from the Graduate School before reporting to Window 18.

• Student Jobs  
The following campus jobs for students are now listed at the Student Employment Service in Wulling Hall:

CAMPUS JOBS FOR MEN  
Hospital Janitor  
Creamery Worker

Laborer  
Custodial Worker  
Food Service Worker—Urgent  
Senior Clerk  
Parking Attendant  
Engineering Asst.—Drafting  
Lab Attendant  
Hospital Orderly—full time or part time  
Assistant Communications Technician  
Clerk  
Stores Clerk—part time or full time  
Intramural Official—Basketball officiating  
Experimental Subject  
Lab Technician  
Ice Link Attendant  
Lab Animal Tech.—full time  
CAMPUS JOBS FOR WOMEN  
Clerk-Typist  
Clerk—full or part time  
Experimental Subject  
Clerk-Steno  
Sr. Clerk-Typist  
Secretary  
Nursing Station Asst.  
Lab Attendant  
CAMPUS JOBS FOR MEN OR WOMEN  
Hospital Aide—part or full time  
Food Service Worker—Mpls. or St. Paul Campus  
Jr. Scientist—BA in Chemistry, Biochemistry, or Psychology  
Clerk  
Student Personnel Worker—full time  
Lab Tech. Asst.  
Sr. Public Events Attendant—Tour Guide  
Lab Attendant  
Sr. Lab Tech.  
Many OFF-CAMPUS jobs are also available. See the bulletin board at 30 Wulling Hall for complete listing.

• Extra Session for Economics 177A  
The extra session for Economics 177A, originally scheduled for Wednesday evening, November 30, is cancelled. It has been rescheduled for December 7 in CB 120. Regular sessions, Friday afternoon, December 2 and 9, will meet as planned.

## THE YELLOW PIANO

321 14th Ave. S.E., Dinkytown—Third Floor. Phone 331-8096

<p><b>Wednesday, Nov. 30</b></p> <p><b>JOHN "BIRD" GARON and the Black Crow Band</b></p>	<p><b>Saturday Dec. 3, 1966</b></p> <p><b>MARK ANDERSON "Mama's Home Cookin' " Silent-Sound Flicks.</b></p> <p>W. C. Fields 3 Stooges Bugs Bunny</p>	<p><b>Sunday Dec. 4</b></p> <p><b>Mark Anderson</b></p> <p>1 - Unique Original Sound</p> <p><b>"Mama's Home Cookin' " R &amp; B with Soul</b></p>
--	--	---

ENTERTAINMENT — 9-7

## COLLEGE LEVEL COMPUTER PROGRAMMING TRAINING & PLACEMENT

- Course taught by experienced programmers
- Instruction on IBM, Honeywell & Control Data computers
- Small classes. Individual attention
- No key punch or other clerical training included
- Prerequisite: One year of college plus successful completion of the IBM Computer Programming Aptitude Test

**Our graduates are employed as COMPUTER PROGRAMMERS with the following major firms:**

Bell Telephone Co.	Northwestern Nat. Bank	Pillsbury
American National Bank	Western Electric	IBM
St. Paul Insurance Cos.	Northern States Power	Foley Mfg.
Univac	University of Wisconsin	Burroughs
Honeywell	First Computer Corp.	Aries, Inc.

**Next Classes, Day and Night, Begin January 9**

For Full Information, Call, Write or Visit  
**COMPUTER DIVISION**  
**BROWN INSTITUTE**  
3131 East Lake Street, Minneapolis 55406 721-1639  
Approved for Veteran Training

## AUTHORIZED SERVICE

## OVERSEAS DELIVERY...

Just a few minutes from campus! Drive straight out University Ave. N.E. to 49th and turn right. Go 6 more blocks to Central and you're there. Service Dept. open Mon. thru Fri. from 7:30 a.m. to 5 p.m.

If there's a trip to Europe as well as a new VW in your future, be sure to make arrangements at Columbia before you go. They will order your car, arrange your insurance and have car delivered wherever you specify. (Be sure to let us know 90 days in advance).

## USED VW's (58's TO 66's) WARRANTED UP TO 100%:

Choose from Buds, Busses, Karmann-Ghias and 1600's.  
Low Bank-rate Financing Available, too.

Authorized Volkswagen Dealer

## COLUMBIA HEIGHTS MOTORS INC.

49th & CENTRAL N.E. • 788-9621

## WHAT'S ON THE MENU?

WEDNESDAY, NOVEMBER 30, 1966

MAIN CAFETERIA\* Lunch served 11:10 a.m. to 1:30 p.m.

SPECIAL COUNTER PLATE LUNCH:

**BREADED PORK CHOP** with Hot Cherry Sauce, Baked Idaho Potato, Buttered Whole Kernel Corn ..... **59c**

A LA CARTE COUNTER SUGGESTIONS:

Soup—Large Bowl of Clam Chowder with Crackers	20c
Roast Top Round of Beef with Natural Gravy	60c
Braised Beef Tips with Mushrooms over Hot Biscuit	50c
Baked Stuffed Green Pepper with Tomato Sauce	45c
Cheese Strata with Bacon Strip	35c
Large Peach and Cottage Cheese Salad in Lettuce Cup	30c
Freshly Baked Union Pies—Lemon Meringue, Apple, Cherry or Apricot	20c
Spice Layer Cake with Caramel-Nut Icing	20c
Fruit Jello with whipped Topping	15c
Good Coffee (2nd Cup Free with Lunch or Dinner)	10c

FOUNTAIN GRILLE—Serving Monday thru Friday—9:30 a.m. to 4:45 p.m.  
GOPHERETTE—Serving Monday thru Friday—10:30 a.m. to 3:30 p.m.  
SKI U MAH ROOM—Serving Monday thru Friday—10:30 a.m. to 2:00 p.m.  
NORTH STAR ROOM—Complete Vending Service Daily—7:00 a.m. to 10:00 p.m.  
GOPHER HOLE—Vending Service Daily—7:00 a.m. to 10:00 p.m.  
\*Cafeteria also serves Breakfast 7:00 a.m. to 10:30 a.m. and Evening Dinner 4:45 to 7:00 p.m. Monday thru Friday.

## offman union Food Service

CALL 338-7079

Alpha Tau Omega

Call After 7:00 for  
**1 Free Large Pizza**

CHICKEN DELIGHT

626 CENTRAL N.E.

# BUYERS AND SELLERS

of Goods and Services Use

## THE WANT ADS

STOP IN AT:

Room 11 Murphy Hall

Cash Rate: \$50 per line 1st day,  
\$.35 per line additional days.  
Charge Rate: \$.60 per line 1st day,  
\$.40 per line additional days.

2 LINE MINIMUM  
Tele. 373-3385

### APTS. FURNISHED

**WEST CAMPUS MANOR APTS.**  
(413-23 Cedar Ave.) Men, married  
couples only. Lge. sleep. rm., common-  
ity kitchen, \$48-68. mo. Large furni-  
shing apartments. Including util. \$80-  
\$95. 927-8867. FQ

**MACKUBIN MANOR APARTMENTS**  
(Mackubin at Holly—St. Paul)  
Small 1 bedroom apt.—\$70 month  
Large 1 bedroom apt.—\$80 month  
Large 2 bedroom apt.—\$92 month  
All nicely furnished. 927-9367. FQ

1648 E. 18TH ST. Lovely 3-rm. + pvt.  
bath. Near W. Bank. JA. 9-5585.  
N30

LG. 2 B.R. FURN. Lower dplx. Nr.  
W. Bank. \$175. 825-9131. D1

891 WEEKS AVE. S.E. Nr. Como,  
newly dec., cpts. lg. yard, 2-3 girls.  
Mr. Pierce 336-2314 eves. 'til midnt.  
D8

1 1/2 ROOM avail. after Dec. 16. 8 bks.  
to campus. 331-6822. D6

**YALE PLACE.** 1329. Clean, roomy,  
effic. 1 & 2 bdr. Conv. transp. to  
U. Reas. Mgr. on premises. Children  
welcome. UC

**EAST 19TH ST.** 220. Clean, roomy,  
effic. 1 & 1 bdr. Conv. transp. to U.  
15 min. drive. Off St. pkgng. Reas.  
Mgr. Apt. 102. UC

**LGE. 1 B.R.** Walk to U. Furn. or un-  
furn. Cpl. only. \$110-\$120. 331-  
9397 eves. D6

**SUBLET 1 B.R.** Imm. poss. 801 Univ.  
S.E. 331-8479. D6

**EFFIC. for 2.** avail. Jan. 1, 727 Univ.  
Ave. #14. 336-3432, \$125 mo. D8

800 UNIV. S.E. 2 bdr. newly cptsd.,  
air cond. Avail. Jan. 1. 522-6336.  
UG

16TH AVE. S.E. Nicely furn. 1 bdr.  
Tile bath & shower. Pkng. 5 bks. to U.  
\$120 incl. all util. FE. 1-1762. D7

4TH ST. S.E. \$107. 5 rms., bath, sun  
porch, stv., ref., htd. \$100. 338-1875  
D7

11TH AVE. S., 2509. Lge. 2 bdr. Ideal  
for 4. Util. pd. Near bus & shop.  
Ride to U avail. 338-4665 eves. D7

700 UNIVERSITY—1 bdr. apt. Air  
cond. Avail. Dec. 16. 333-8340. D2

1 B.R., near campus. Immed. poss.  
Heat & gas. Clean. 331-5660. D7

1800 16TH AVE. S. Lg. 2 bdr., LR,  
DR, kit. & bath. JA. 1-5535. D7

**WALK TO U—335-5067.** D1

### APTS. UNFURNISHED

27TH AVE. S.E., #48 nr U of M by  
Franklin Ave. bridge. New bldg. 1  
b.r. \$140, effic. \$105. Comp. cptsd.,  
air cond., indiv. thermostats, ample  
cups. pkgng. Immed. occupancy. See  
ctkr on premises. UC

**FRANKLIN Cmps nr U of M.** 48 27th  
Ave. S.E. New bldg. 1 br. \$140, effic.  
\$105. Comp. cptsd., air cond., indiv.  
thermostats, ample cups pkgng. Im-  
med. occupancy. See ctkr on pre-  
mises. UC

**NICE BIG APT.** Just remodeled. 3008  
Lyndale Ave. S. 824-9931, 588-8865.  
UC

**NR. W. BANK.** 3 b.r. house unfurn.,  
\$150; furn. \$200. Avail. 825-9131.N21

**LOWER dplx.** 1683 15th Ave. S.E. 3  
bdr. Stv., ref., cptsd. \$185 mo. 331-  
7915. N29

**APT. UNFURN.** 1 mi. from U. \$88/  
mo. Util. incl. Call 331-3365. N30

**NEAR "U" HOSP.** 1 B.R. Apt. Partly  
furn. Avail. Dec. 15. 784-6544. N30

**MIDWAY FARM CAMPUS.** 2044 Brew-  
ster. 1 & 2 bdr. mod. bldg. Air cond.  
Cptsd. Close to both cities, shop, &  
trans. 645-7952 or WE. 5-3182. UC

**NR. W. BANK.** House unfurn. \$150.;  
furn. \$200. avail. 825-9131. D1

1 B.R., htd. Stv. & ref. Cptsd. 15 min.  
walk to U. 373-5886. Aft. 4:30 331-  
8250.

12TH AVE. S. 2400. 4 lg. rms. &  
bath. Htd., w/stv. & ref. Pref.  
grade or Instr. Nice & clean. PA. 4-  
6164. No pets. Avail. Dec. 15. D6

1 B.R., fully cptsd. Utl. incl. Walk to  
U. 405 8th Ave. S.E. 335-1407. D6

3 B.R. lower dplx. L.R., D.R., gar.  
Stove & refrig. \$130. Util. not incl.  
On intercampus bus. Families. 331-  
2322. D2

### ROOMS FOR RENT

ALL UTIL. incl. Furn. rooms for girls  
w/hakng. 618 5th St. S.E. 336-0036  
UC

ROOMS for independent male students.  
Winter-Spring quarter. 339-1266 or  
400-10th Ave. S.E. N73

**FREMONT N. 1609.** Men, Lg. corner  
B.R. Shr. kit., priv. parking. \$11.  
529-9736. N30

**ROOMS FOR GIRLS.** Kit. & Wash.  
fac. Walk to U. Call Bonny. 335-  
1279. UC

**ROOMS & APTS.** For Rent. Near West  
campus. 1412 3rd St. So. 332-3339.

**ROOM FOR GIRL.** Pref. Senior or  
Grad. Kit. & Laundry Priv. 331-5207  
N23

**INTERNATIONAL HOUSE—Room &**  
**Board.** 514 11th Ave. S.E. 331-1846.  
D8

**CLEAN ROOMS** for girls. Kit. & wash-  
ing fac. Walk to U. 336-8711. N30

**DINKYTOWN 3 bks.** Girl. Half dou-  
ble. 338-1371 eves. UC

**LARPENTEUR** at Justice. Furn. or un-  
furn. U of M bus line. 645-4892.  
784-7355. D2

**NEW 2 B.R. apt.** Franklin & Seymour  
S.E. Avail. immed. 335-0746. D7

2 ROOMS with bath. \$49.50 + util.  
928 University N.E. 338-4402. N30

### WANTED TO RENT

**DRIVING away over Holidays?** I need  
a garage Dec. 17 to Jan. 1. Call  
Charles 227-2503 eves. UC

### FOR RENT

3 B.R. BUNGALOW Dec. 1. S.E. area.  
Call M-F. 333-2291 eves. TA. 2-1673.  
N30

### RENT IT CENTER

TV—Phono.—Radio—Misc. Items.  
COLOR TV, 419 14th Ave. S.E. FQ

**FACULTY HOUSE** for rent. Winter  
Quarter. Lg. 4 B.R. Kenwood area.  
374-1501. D8

### ROOMMATES WANTED

**FEMALE GRAD.** Dec. 1 or Jan. 1 to  
shr. 3 B.R. apt. 331-3026. N22

1 GIRL NEEDED to shr. house w/4  
331-4689. 614 8th Ave. S.E. N24

**NEED MALES:** Share lg. 4 br. house.  
Completely furnished. Walking dis-  
tance to M Campus. 331-1416. D6

**GIRL TO SHARE APT.** w/1. \$35.  
Near U. 331-3730. N29

**GIRL 20+** to share apt. w/1. Walk to  
U. Call after 5 (or 9 on Mon. &  
Wed.) 331-7351. D8

**MALE GRAD.** student pref. Bdrm. in  
house w/grads. 331-1917. 603 5th St.  
D1

2 GIRLS 21+ to share 2 bdr. apt. Nr.  
Marshall H.S. Avail. Jan. 1. Call  
Lilli, Katie, 331-6538. UC

**GIRL 21-23** to share lovely apt. with 3  
or 4. \$36 mo. Near U. 336-1416. D2

**MALE to share lge. furn. apt.** with 2.  
\$28 per mo. 333-3764. D2

**MALE to share effy.** Soph. + 3 min.  
walk to Mall. 331-8585 after 5. D1

**GIRL 21+** to share apt with 2. Near  
U of M. Call Barb 331-2390 between  
5 & 7. UC

**GIRL TO SHARE** apt. with three.  
646-6958 after 3:30. D7

### HOMES FOR SALE

**FOR SALE** by owner: 3 1/2 B.R. bunga-  
low, 5 min. to campus. Fenced yard,  
stove & ref., air-cond., cptsd. Assume  
\$12,300 5% mtge. Immed. posses.  
Must sell. 2849 40th Ave. S. PA. 4-  
3705. D7

### FOR SALE

**MICROSCOPES:** Sales & Repair. New  
& Used. BOWER & HAACK, 1826  
Como Ave. S.E. 331-5791. FQ

**MEERSCHAUM Pipes SALE.** Big var.  
'THINGS' 406 Cedar Av. S. 338-8042  
FQ

### SAVE—FACTORY TO YOU

**Cedar Lake UNPAINTED Furn.**  
Desks - Chests Bookcases - Chairs  
TA. 4-1033 13 WEST 26TH ST.

### AM-FM radios \$21.95. Luxo Lamp

Kit \$11.95. Color TV. 419 14th  
Ave. S.E. FQ

**KNEISSEL SKIS** 6'11", \$45; Add  
mach. \$45; Photo dkrm. equip. 927-  
8297. N23

**AMPEG** WA. 2-5731 N30

**FOR SALE:** 75 point diamond. Call  
690-2185 after 3 p.m. UC

**MALE—Single** rm. and bdr. contract  
at private boarding house. Call Ray  
Preston, 331-9785. D1

**CHESS LIFE** 1961-65. 222-3369. D1

**BEAUTIFUL WOODED LOT** nr. St.  
Paul Campus. Improvements in. MI.  
5-8753. N22

**COMSTOCK DORM** Contract for Sale.  
Call Rm. 437 W Comstock. D5

**DORM CONTRACT:** Must sell by win-  
ter qtr. Low rates, quiet wing. 378-  
6558 after 6. D6

**DORM Contract.** St. Paul. Discount.  
After 6 p.m. Korky 647-3502. D6

**BEAVER** coat, mink collar, furrier  
appraised, \$50. 646-5378 eves. D1

**CENTENNIAL** single, avail. immed.  
339-7421 Rm. 3204 after 7 p.m. D6

**CENT. CONTRACTS.** W. & S. qtrs.  
for dbl. rm. 9444 after 6 p.m. D2

**WOMAN'S** white figure ice skates,  
size 8. Q24-0255 after 6 p.m. D2

**GENT. HALL** contract, sgl. Rm. 5203.  
339-7421. Leave message. D2

**TERRITORIAL Dorm** Contract. W. &  
S. qtrs. Reduced. 373-6559. D2

**FOR SALE:** 17" table TV \$20, and 50"  
Scott ski poles \$8. 331-3967. N30

### HELP WANTED

**STUDENTS—Male** or female to work  
3 or more aftn. & eves./wk. Hrs.  
2-10. \$1.75/hr. 335-2311. D8

**MEN** for shipping & factory work.  
Must be able to work either all  
morn. or all aft. The Judy Co., 310  
N. 2nd St. D6

**NEED BABYSITTER** for afternoons.  
1 child. Tel. 377-6749. D6

**CHRISTMAS RUSH**  
Male. Avg. \$4 hr. Car nec. 374-1550.  
D8

**GIRL** to care for 3 children while par-  
ents are out of town over Christmas  
holidays. Exp. Ref. Good pay for  
right person. 644-2346. D6

**FULL** and part-time personnel. New  
sub. of ALCOA. good future. Busi-  
ness & sales exp. helpful, not nec.  
Good pay plus scholarships. Call FE.  
3-0581. D8

**MALE & FEMALE** college students to  
drive school bus. Working schedules  
available to fit with class programs.  
Free bus service to & from U to in-  
sure meeting your class schedules.  
639-3001 or 645-3959. Columbia Trans-  
it Corporation. FQ

**HALFTIME HSKPR.** needed by college  
Prof. & nice boy in 3rd grade. 2-6  
p.m. Lt. hawk. Prepare supper. Mat-  
ernal companion for boy. Start at  
once. Walk. dist. to U. 331-8456. D1

**ATTENTION COLLEGE MEN**  
\$30.00 week guaranteed for men, part  
time work. Call TA. 7-2951. FQ

**COLLEGE STUDENTS** earn \$30.00 per  
week for 10 hours part time. Call  
361-7647. FQ

**BUSBOYS.** 18 or over. Ramada Inn.  
Eves. & Sat. 1870 Old Hudson Rd.,  
St. Paul. UC

**TAXI DRIVERS**  
Need cash for school expenses? Stu-  
dents 21+ are needed to drive taxi-  
cabs. Work profitably around your  
class schedule on a full or part time  
basis. Days or nights, weekends also  
available. Men eligible for military  
service accepted. Apply in person at  
YELLOW CAB CO., 127 1st Ave.  
N.E., Mpls. FQ

**MALE:** Pt. time, flex. hrs. 644-2647.  
UC

**PART TIME—4 nights** week. \$30. 18-  
24. Call 226-1039. FQ

**\$35-50/WK.** Call Fuller Brush Co. aft.  
5. 698-3666. UC

**FREE ROOM** for male stndt. asst.  
social worker 9 hrs wk instead of  
rent. 1 blk from W. Bank. 336-3356.  
Pillsbury Citizens Service, Mr. Tandy  
UC

**MALE & FEMALE.** part time, chauff-  
eur's lic. required. 21+. 332-5081.  
UC

**GROUP LEADER** for Edina area  
YMCA (Boys 5th & 8th graders)  
Call Bill Thomas, 922-7370 UC

**PT. TIME JOBS** avail. for mechanic-  
ally inclined men. \$1.60/hr. Time  
may be arranged to suit your sched-  
ule and work requirements. Within  
walking dist. from U. Lake Indus-  
tries (spring mfgs.) 1109 2nd St.  
S. 3rd floor, FE. 9-9226, Mr. White.  
D8

**FREE LODGING—Answer** motel nite  
bell phone. 15 min. from campus.  
6637 Lyndale Ave. S. 825-4488. D1

**NITE AUDITOR.** Several positions  
open M-Th. or Fri-Sun. 11 p.m.-7  
a.m. Need trans. Will train. Ample  
study time on job. 588-4665 for appt.  
D6

**CLERK.** male, for cigar dept. & check  
out every other eve. & part of Sun.  
Towey Drug, Snelling & Selby, Mid-  
way, St. Paul. 646-7181. D6

**STUDENT** with engineering back-  
ground to assist in research lab. Part  
time hrs. arg. Near U of M. Con-  
tact H. L. Meigaard 331-1873. D6

**TELEPHONE** sales. Pleasant working  
cond. Eve. hrs. Good pay. Also need  
collectors. 339-2002. D6

**SEVERAL** waitresses, can arrange 12-  
20 eve. hrs. wk. Apply Valli Pizzas,  
331-1361 Dinkytown. D1

**STENOGRAPHER,** min. 1 yr. exp. in  
shorthand, dictaphone & statistical  
typing. Generous fringe benefits.  
Good salary. Near "U". Assistant to  
steno dept. supervisor. Bros Incorporated,  
1057 10th Ave. S.E. 331-5921. D6

**DUN & BRADSTREET** has opening  
for part time employment during  
school term, full time in summer.  
Prefer Law or Bus. major. Must be  
able to work 2 yrs. or more. Call  
W. Homuth 333-3286. D7

**YOUNG MAN** or girl to sell in import  
shop dwnn. Exp. required. Full or  
part days. 338-2477. D7

**YOUNG MEN** needed as YMCA club  
leaders, 1-2 aft. &/or eves. wk. Up  
to \$25 mo. Contact Terry Williams,  
West Central YMCA in So. Mpls.  
TA. 7-2897. D7

### AUTOS FOR SALE

'64 TRIUMPH SPITFIRE. Red conv.  
'Gd. cond. Best offer over \$1,300. 923-  
2178. N30

'59 BLUE Merc. 2 dr. H.T. R&H, PS,  
PB, v.g. cond. 645-4867 after 5 p.m.  
N17

'62 FORD XL conv. Low mileage, exc.  
cond. \$995. 488-4673 or 339-1596. N22

**FACTORY** Shelby-Amer. Cobra htdp.  
Black. Mint cond. 699-0285 after 6.  
N29

'66 VW. 18,000 mi. Sunroof. Excel.  
cond. Only \$1295. 338-7980. N30

'63 RAMBLER Classic 770 Stat. Wag.  
Auto., new sno tires, bucket seats.  
Exc. cond., must sell this wk. Will  
accept older car in trade. 560-1146.  
D7

'65 IMPALA 4 dr. Sports sedan with  
P.St. & P.B. \$1795. 560-1146. D7

'65 AUSTIN Healy 3000 4 sp. syn.  
trans. New Michelin + sno tires.  
Red w/blk. leather & walnut int.  
Excel. cond. 1 owner. Call 336-9558.  
D6

'62 VW. Grey, good cond. Radio. Good  
tires. Best offer. 331-4485. D6

'57 VW. convt. Radio & gas htr. Ex-  
tras. Good cond. 333-5085. D6

'58 VW. Heater. Runs well. Call after  
6 or weekends. 331-2041. D6

1959 ALFA-ROMEO Sup. Spyder. 2  
tops. Call Peter Stoupas 331-5987,  
331-5986. D6

'65 T-BIRD. Immaculate, 16,000 mi.  
Must see to appree. 338-5763. D2

'64 FORD 4-DR. Cust. 390. Auto., posi-  
tract. Ex. mech. cond. \$600 or best  
offer. 331-9123, John. UC

'63 VW convt. Gas htr., radio. 24,400  
mi. 377-6306. D2

'68 CHEV. Impala SS. 4 spd. Excel.  
cond. 484-5394. D2

'63 MG MIDGET. Good condition. Must  
sell. 5895. 645-7455 after 6. D7

'60 FALCON 4 dr., 6 cyl., std. trans.  
R&H. Good cond. \$175. 429-3501  
after 7. D2

'65 CORVAIR 4 sp. Silver gray. 338-  
3972. N29

'66 VW. Must sell. Excel. cond. Driven  
only 5 weeks. 336-3971. N30

'57 BUICK 2 dr. htdp. New trans.  
Good cond. PB. \$200. 331-3925. D7

'63 AUSTIN HEALY 3000. Red, 21,000  
mi. 1 owner. Dr.'s car. Like new.  
Must sell, make offer. 225-1686. D7

'60 AUSTIN HEALY. Excel. cond.  
Must sell. \$875. 645-0142. D7

**FOR SALE TYPEWRITERS**  
(TYPEWRITER CLEANED, \$4 incl.)  
(ribbon. Sales, rentals, also elec.)  
(CRANE'S, Dinkytown) FQ

**TYPEWRITERS:** Rent, Sell, Repair.  
KIRK, 617 S.E. 14th Ave. FE. 1-7277

**POSITIONS WANTED**  
BABYSITTING in my home with 1.  
1095 15th Ave. S.E. 331-5387. D7

**TYPING & MIMOGRAPHING**  
THESIS — Stencil & Ditto. 646-4405.  
FQ

**EXP. TYPIST — PROMPT — 724-1963.**  
TYPING & instant copying. 929-9470.  
FQ

**FAST.** reas. Ph.D. Exp. IBM. 866-2456  
FQ

**FAST.** reas. Ph.D. exp. 533-3234 Pat.  
FQ

**TYPING—615 Oak St.—331-3034.**  
FQ

**ACCURATE TYPIST — 529-1914**  
F

# Gray's

**DRUG · STORES**

In Dinkytown 329 14th Ave. S. E.  
FE. 1-2955



### BEER MUGS

Approximately 5 1/2" high, 3" diam., highly decorated with embossed designs, decorated borders and fancy shaped handles.

Buy **88c**  
Several



### DELUXE SWEAT SHIRTS

Fashion designed Henley neck with 3 buttons, cotton & Kodol fibre, short sleeves, choice of 3 popular colors.

Compare **\$2.98**  
Value **\$1.66**

### WALLACE 21 PIECE STAINLESS STEEL TABLEWARE

13.95 **\$6.88**  
Value



Evening Rose Pattern, distinctive raised rose relief for classic table setting. Set includes 4 hollow handle knives, 4 dinner forks, 4 soup spoons, 8 teaspoons, 1 tablespoon.



### HANKSCRAFT VAPORIZER & HUMIDIFIER

One gallon size, runs 8 to 10 hours, shuts off automatically.

Only **\$3.88**

Hanks Craft Cool Vapor Humidifier ..... Only **\$7.88**

### SPERTI SUN LAMP

Nationally advertised Deluxe Model 163. Gives fast, even suntan in your own home. Folds flat for easy storage.



Regular **\$19.99**  
34.95



### REGULAR \$3.98 HEATING PAD

Standard size, 3 fixed heats, washable cover, waterproof pad, guaranteed for long use.

Only **\$1.99**



### BAR STOOLS

29" high with tubular steel frame and non-marking glides. Vinyl upholstered seat. Great for kitchen, den or bar.

Only **\$3.44**



### HIABACHI ASH TRAY

3 assorted styles — round, oval or square. Fancy metal design top & round tapered wood handle. Each in box.

Special **77c**

### PORTABLE TAPE RECORDER

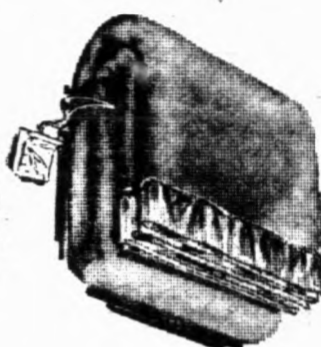
4 transistor, dual track recorder with remote control microphone, two motors. Records in any position. Set includes batteries, tape, microphone & ear plugs.



Compare **\$12.88**  
at 19.95 **\$12**

### GENERAL ELECTRIC ELECTRIC BLANKETS

Twin bed or double bed size. Luxurious blend of 80% rayon and 20% cotton. Automatic thermostat single control, non-shed finish resists shedding and piling.



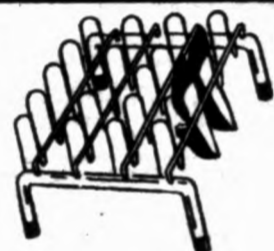
Sale **\$12.88**  
Priced



### MENS BRIEFS OR T SHIRTS

Will not shrink out of fit, heat resistant elastic, no sag binding.

3 Pair **\$1.99**  
Pack



### 9 PAIR SHOE RACK

Chrome finished with plastic caps to protect floors. A \$1.49 value.

**88c**



### WICKER WASTE BASKET

Hand made wicker type basket. Complements any room.

Special **89c**



### 25 LITE INDOOR LITE SET

Multiple burning lamps, approved wiring, continuous string.

**\$2.99**

25 LITE OUTDOOR SET **\$3.99**



### ATTACHE CASE

3" modern slim styling, washable vinyl interior, expandable file.

Compare **\$7.88**  
at \$12.95 **\$7**



### ANTIMONY JEWEL BOXES

Miniature knick knock boxes, wide assortment of styles, highly polished, plush lined, each in box.

Only **98c**



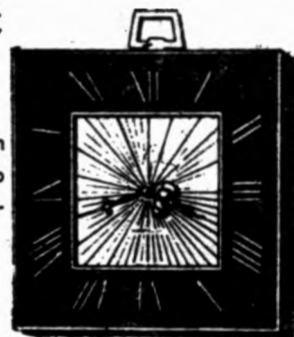
### CHROME FINISH CLOTHES VALET

Adds needed clothes hanging space, yet takes very little floor space. Made of tubular plated steel.

Our Price **\$1.44**

### WESTCLOX ELECTRIC WALL CLOCK

Beautifully styled filigree design in plastic case, lighted dial, sweep second hand, in stylish black color. Guaranteed.



Reg. **\$3.99**  
9.95 **\$3**



### FIELD CREST TOWEL SET

Deluxe, top quality terry. Modern design. Packaged set includes bath towel, hand towel & washcloth.

4.50 **\$2.44**  
Value set

**VALUABLE COUPON**

**BATHE 'N GLOW BATH OIL**

(At Drug Counter Only) Reg. **98c** **37c**

(Limit 2 with coupon. Good through Dec. 3)

**VALUABLE COUPON**

**RUBBER GLOVES**

Small, Medium or Large

(At Drug Counter Only) **33c** Pair

(Limit 2 with coupon. Good through Dec. 3)

**VALUABLE COUPON**

**HEAD & SHOULDERS SHAMPOO**

(At Drug Counter Only) \$1.10 **61c**  
Size

(Limit 1 with coupon. Good through Dec. 3)

**VALUABLE COUPON**

**FOIL XMAS WRAP**

(At Drug Counter Only) 3 Roll **36c**  
Pack

(Limit 2 with coupon. Good through Dec. 3)

**VALUABLE COUPON**

**AERO SHAVE CREAM**

Reg. or Menthol

(At Drug Counter Only) 98c **52c**  
Size

(Limit 1 with coupon. Good through Dec. 3)