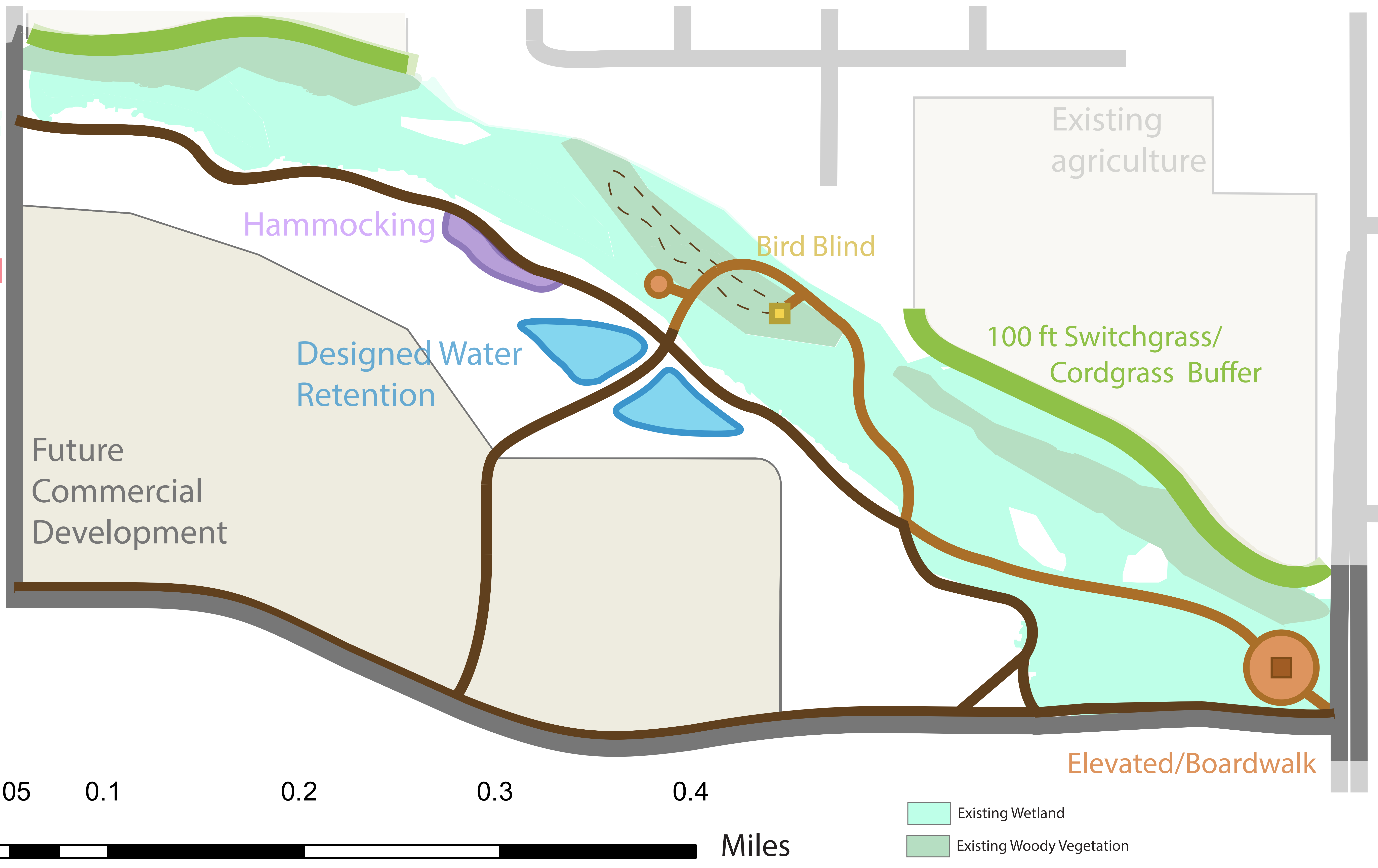
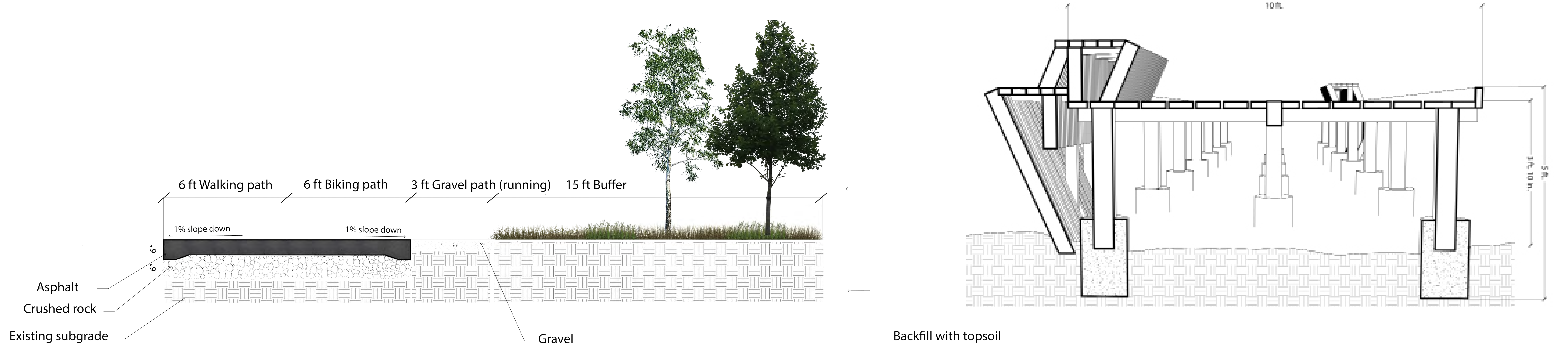


Lake Itasca Greenway

Create a human experience with nature, connecting the COR to Itasca with a focus on stormwater management in respect to future development and existing wetlands



Trail Sections



Precedents

ACES Treehouse
Aspen, CO



Solitude in natural area
Ideal for watching wildlife and personal reflection

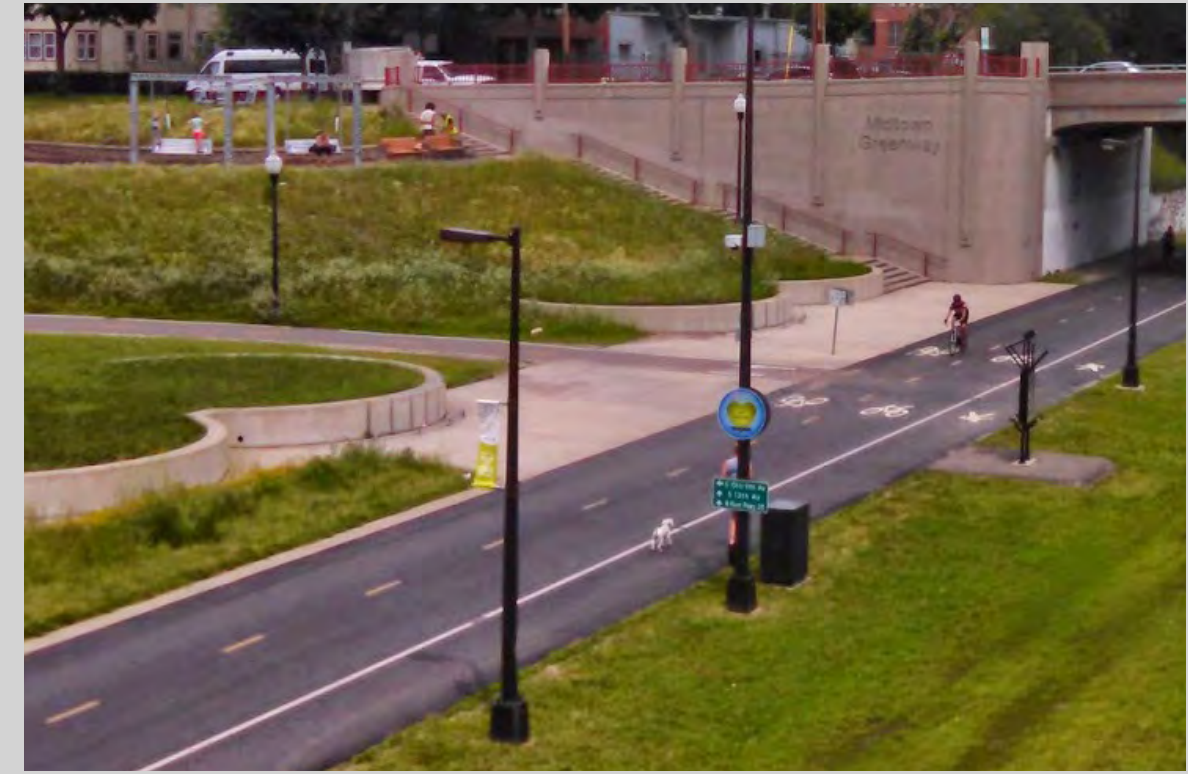


Materiality
Reflects natural surroundings



Education
Visitors can watch and learn about site wildlife ecology

Midtown Greenway
Minneapolis, MN



Easy connections from city streets to trail
Safely and clearly transports pedestrians and bikers from sidewalk to trail



Materiality
Urban infrastructure and natural vegetation seamlessly coexist



Commercial Connections
Businesses utilize proximity to public domain, and add to the trail's atmosphere

Discovery Hollow Nature Play Area
White Bear Township, MN



Unique play equipment
New avenues for imaginative play

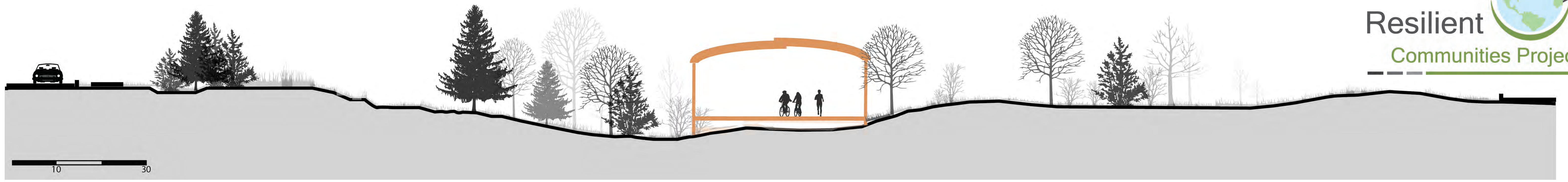
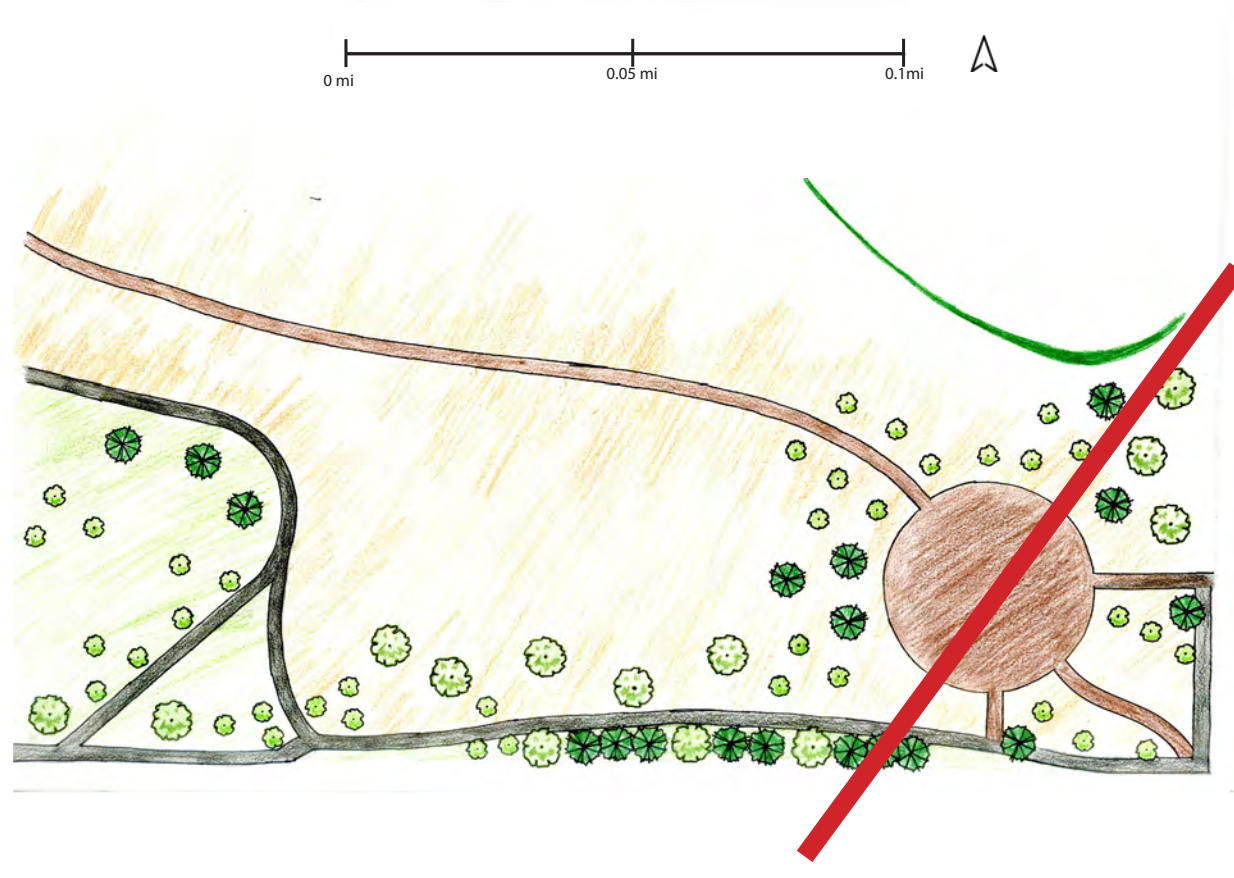


Materiality
Connects children with their natural surroundings



Education
Visitors can learn and take part in growing fruits and vegetables at community garden

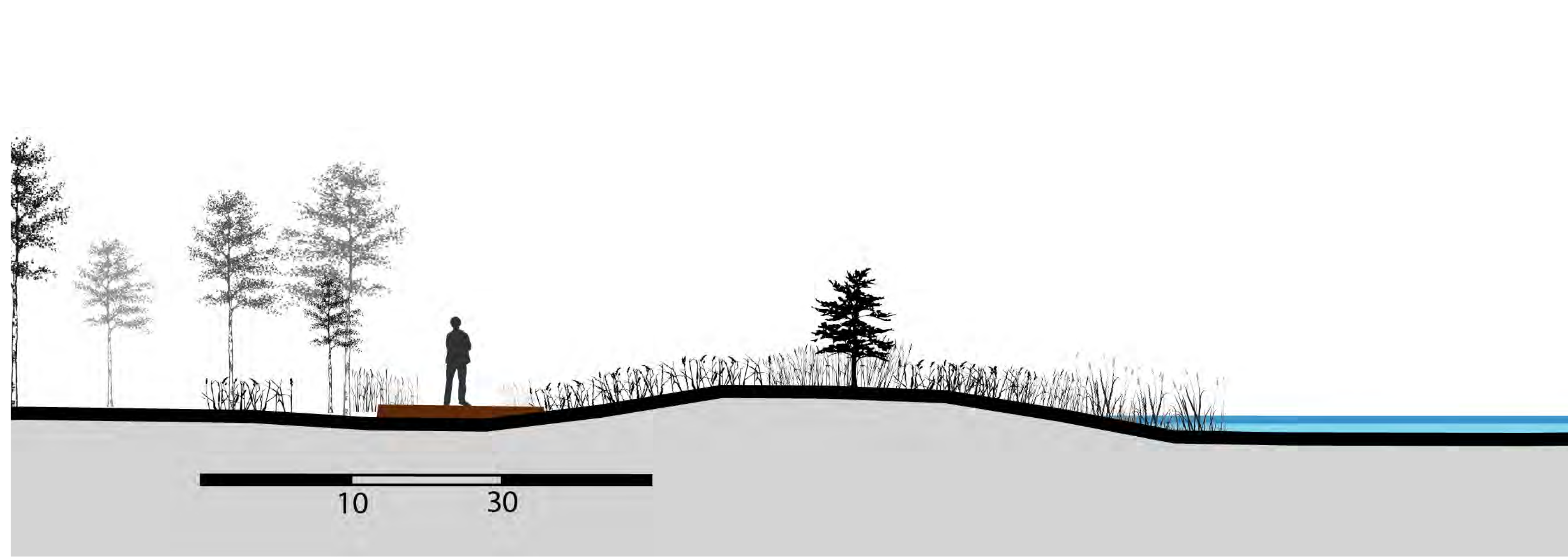
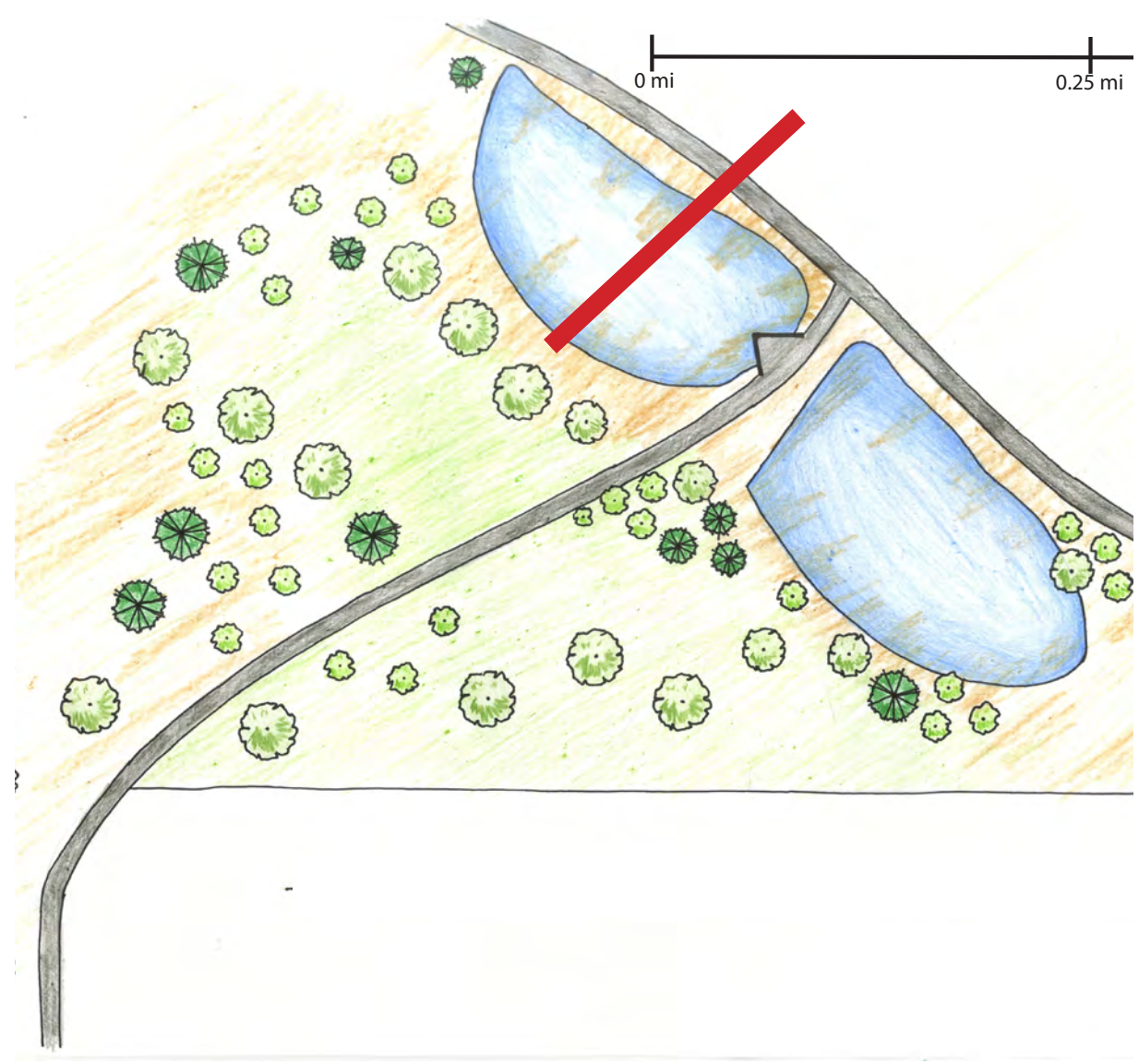
Entrance



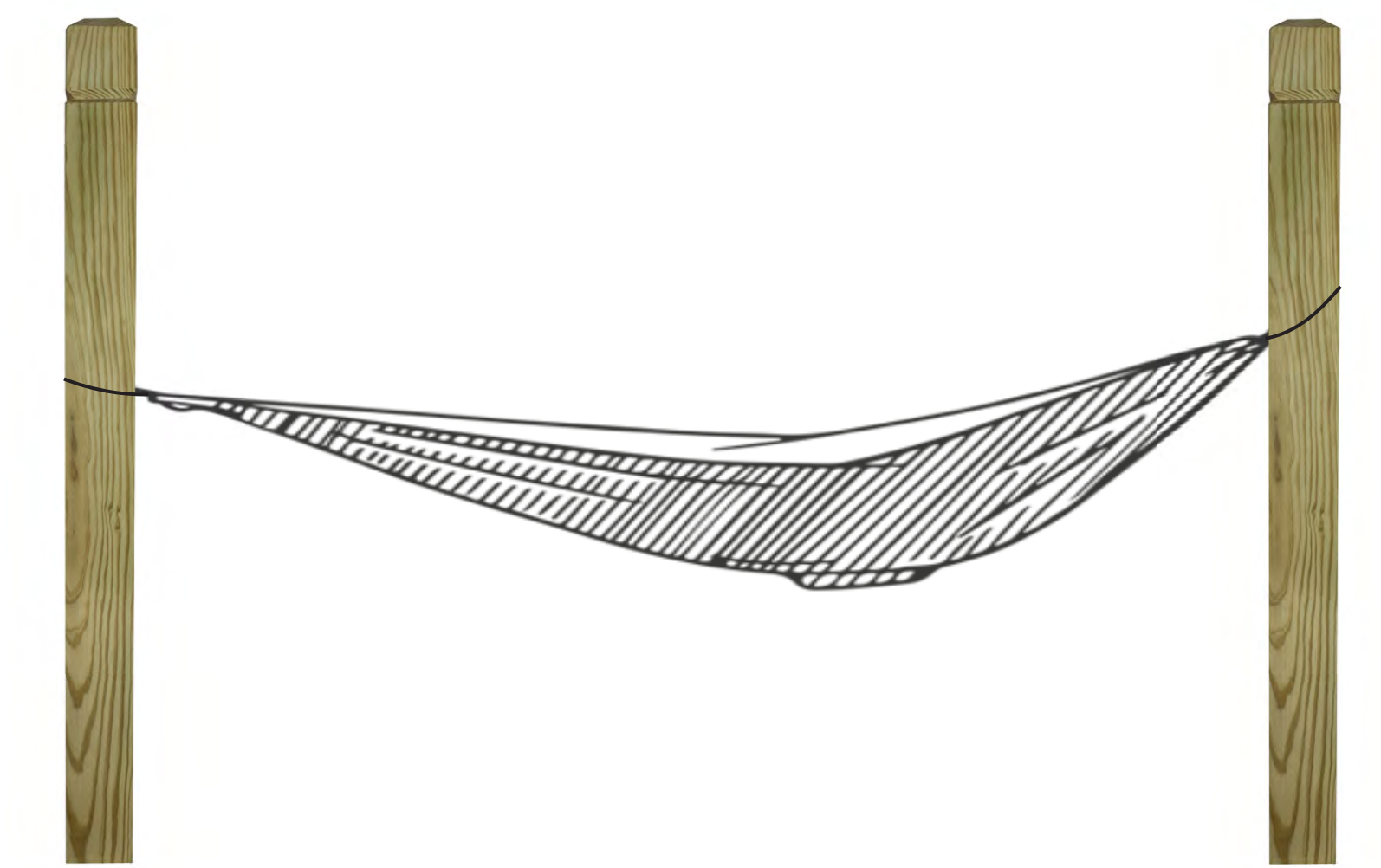
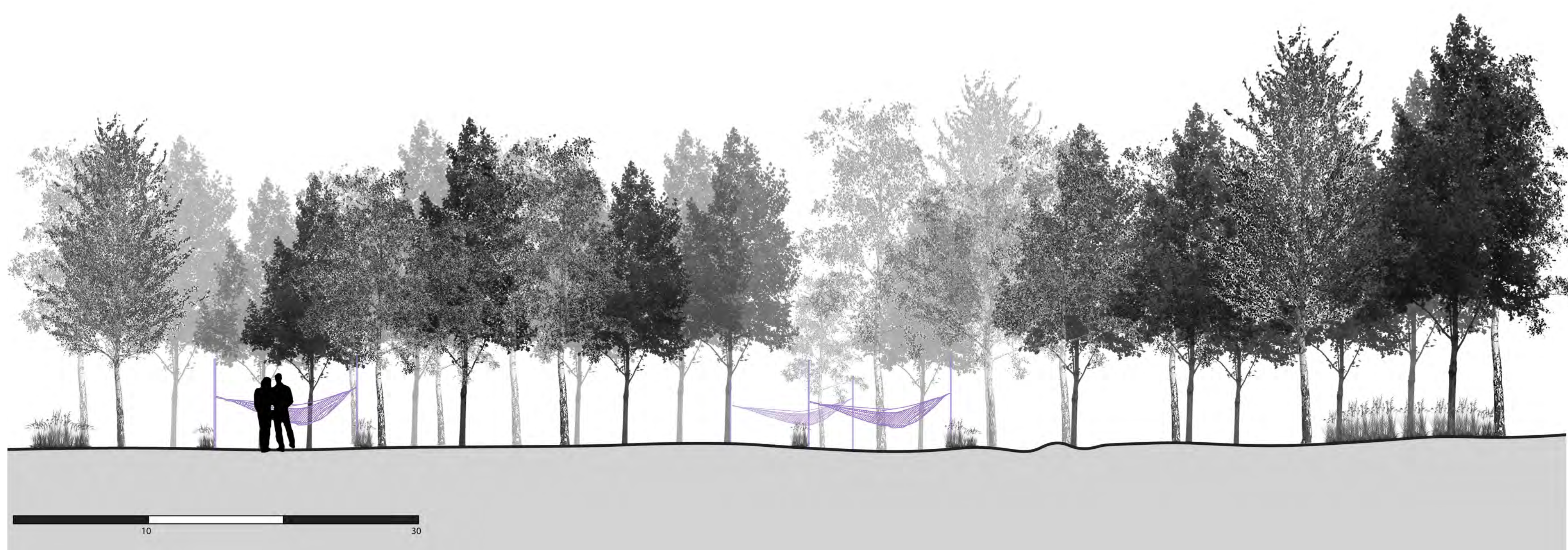
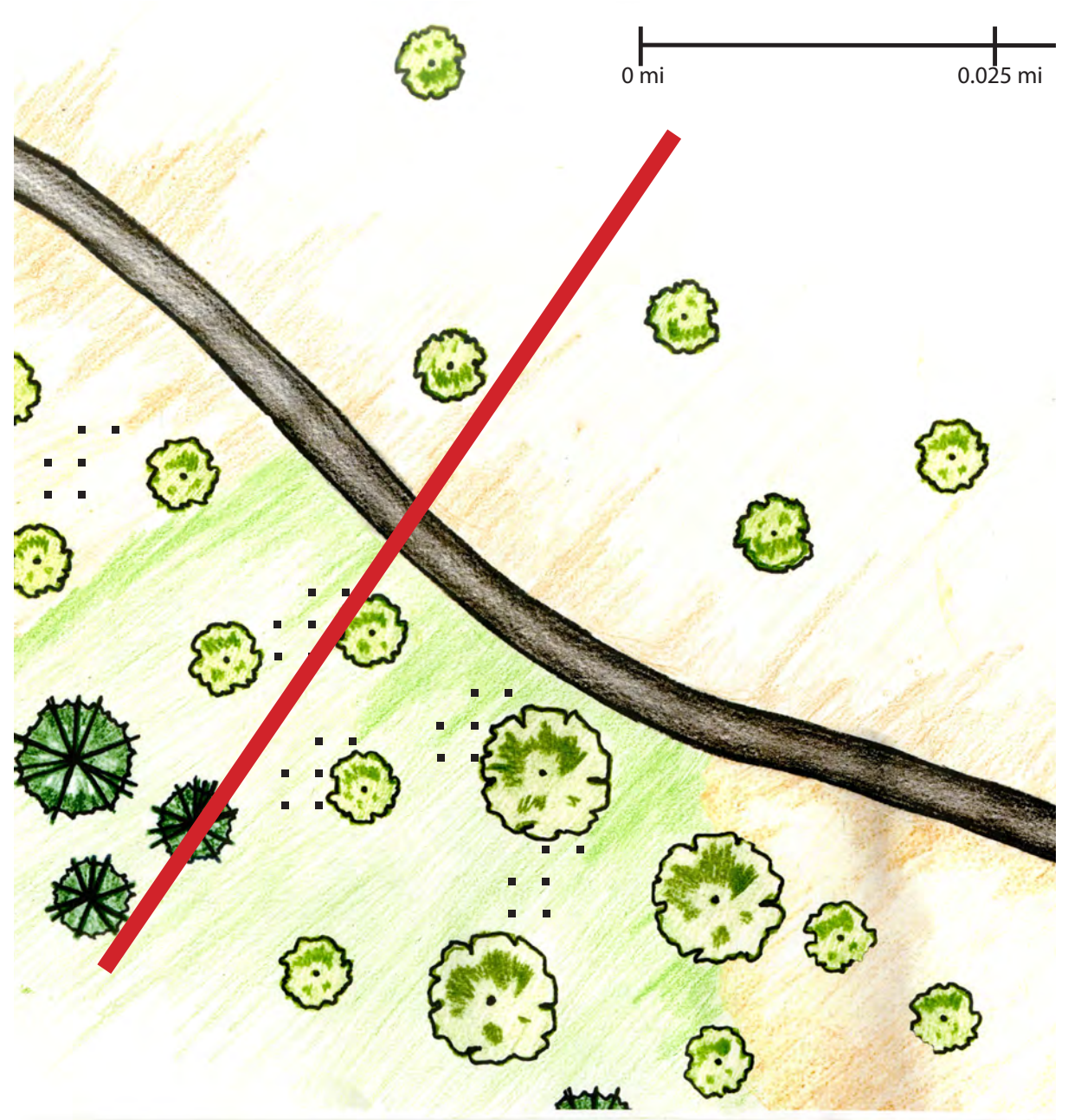
Bird Blind/Wildlife Viewing Area



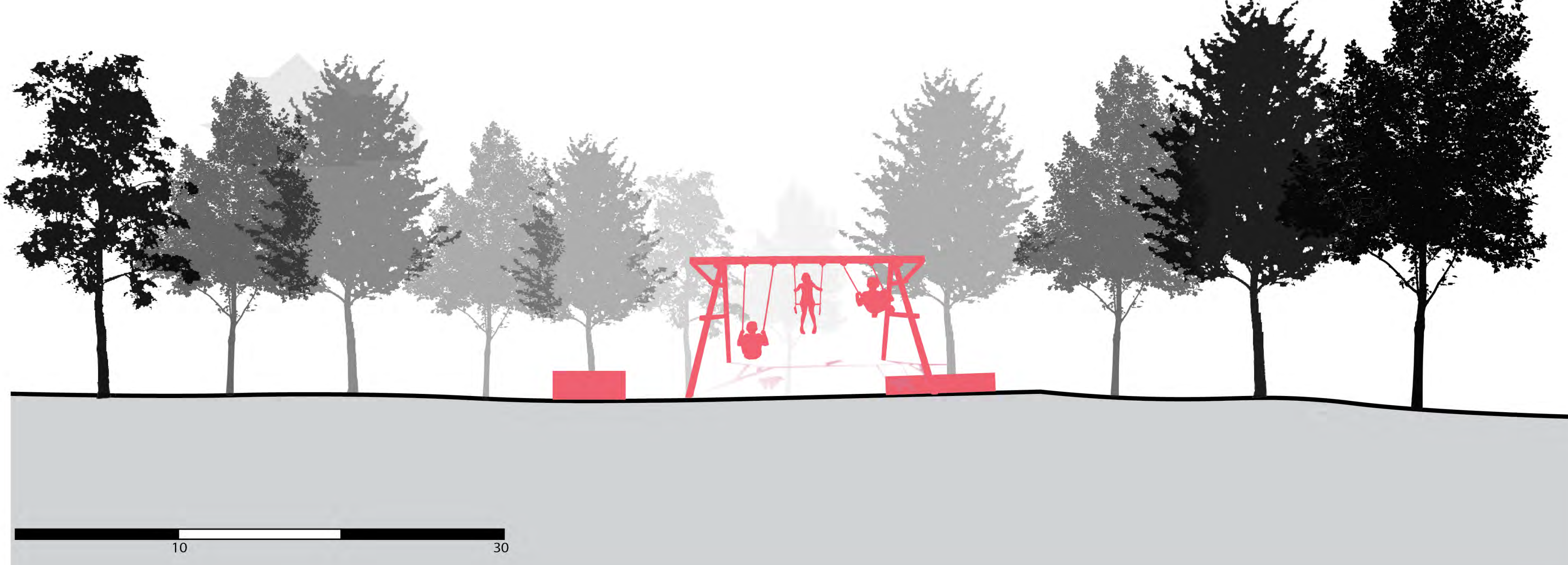
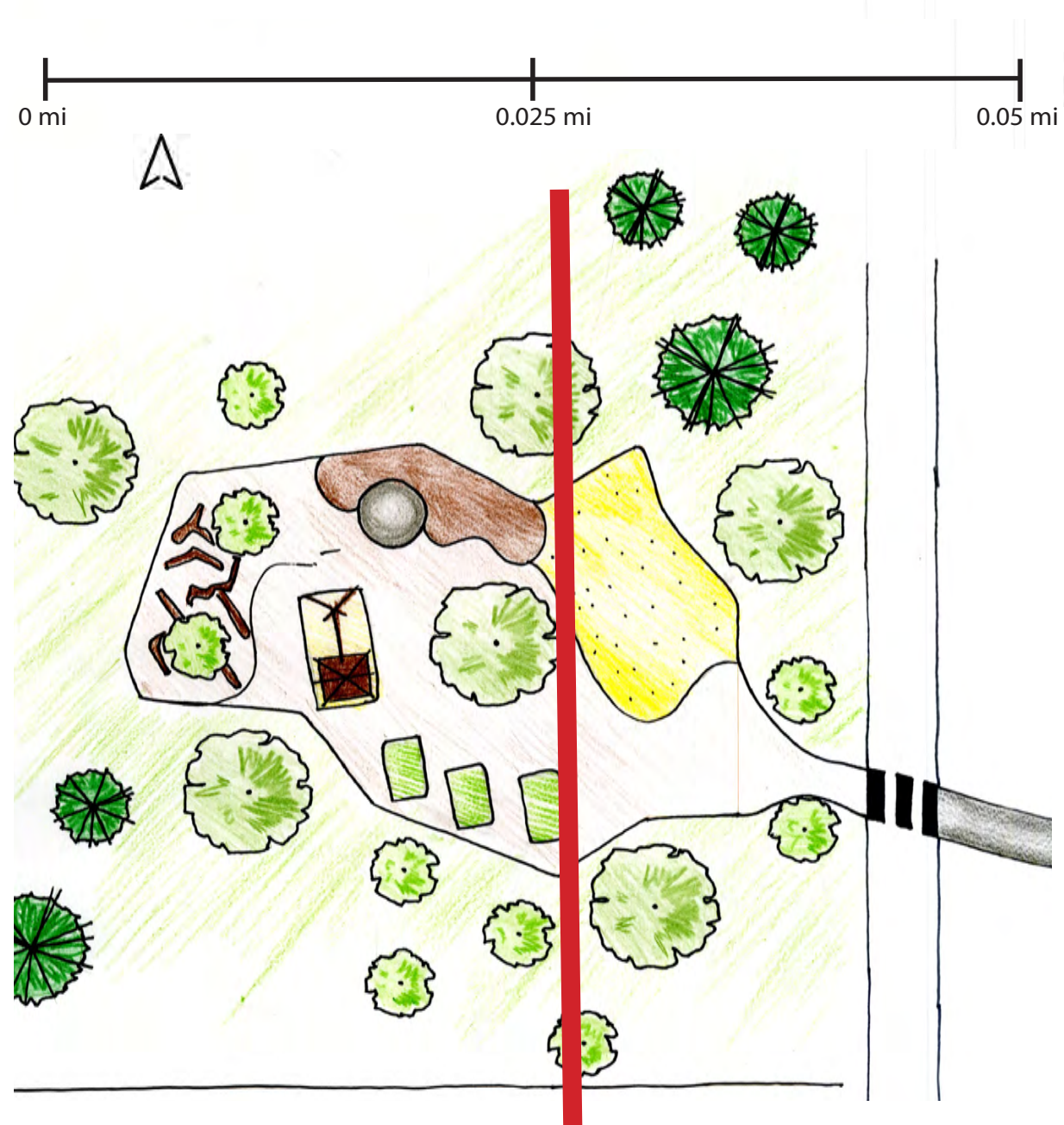
Designed Water Retention/Commercial Connection



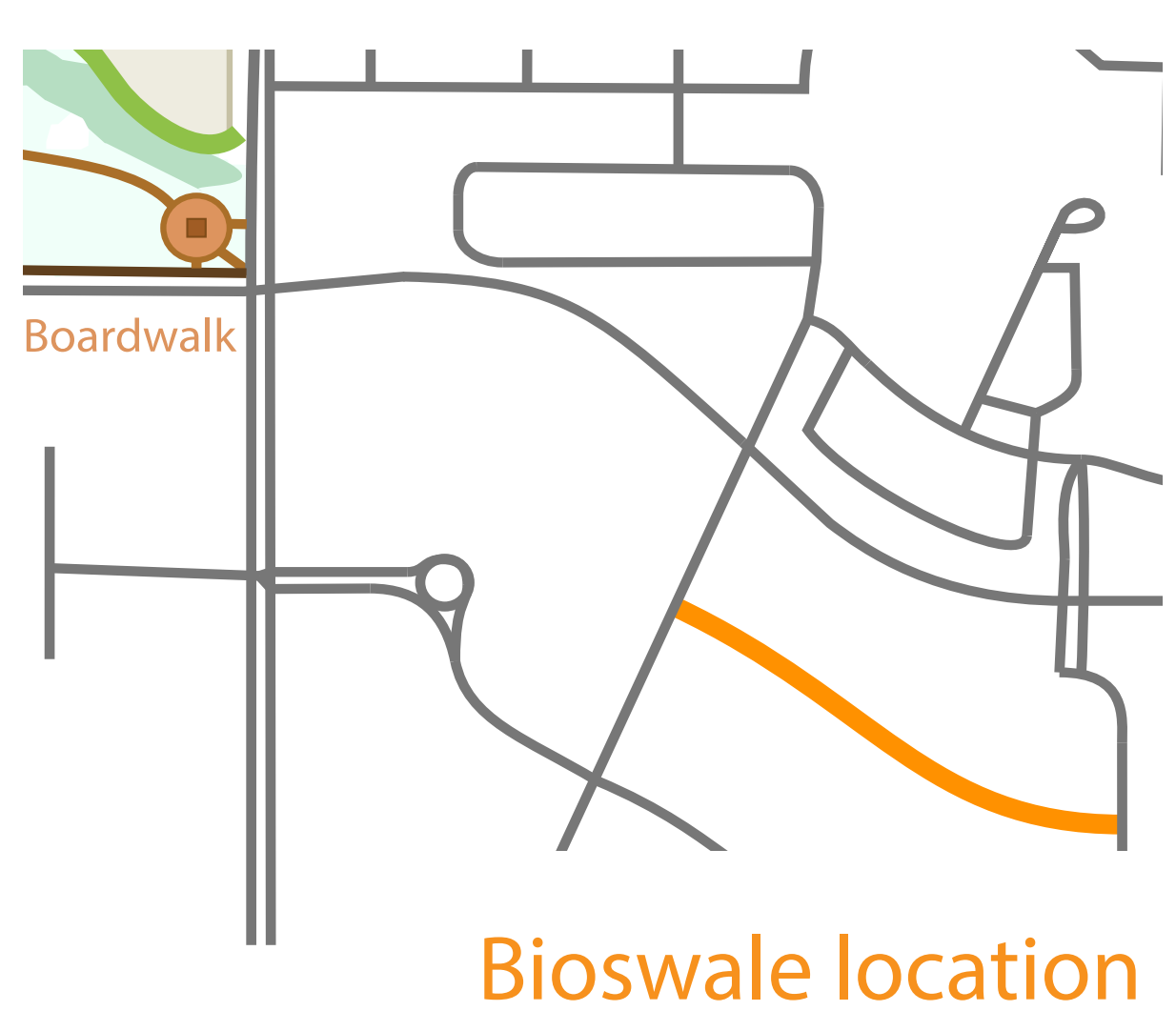
Hammocking Woods



Nature Play



Center Median Bioswale



While not a part of the Itasca Greenway Area itself, the Bioswales are a continuation of the Greenway as it moves towards the COR. Not only does it aid in the retention and filtration of water before entering the adjacent wetlands, it also continues a theme of the harmonious relationship between this urban center and its surrounding natural environment.

