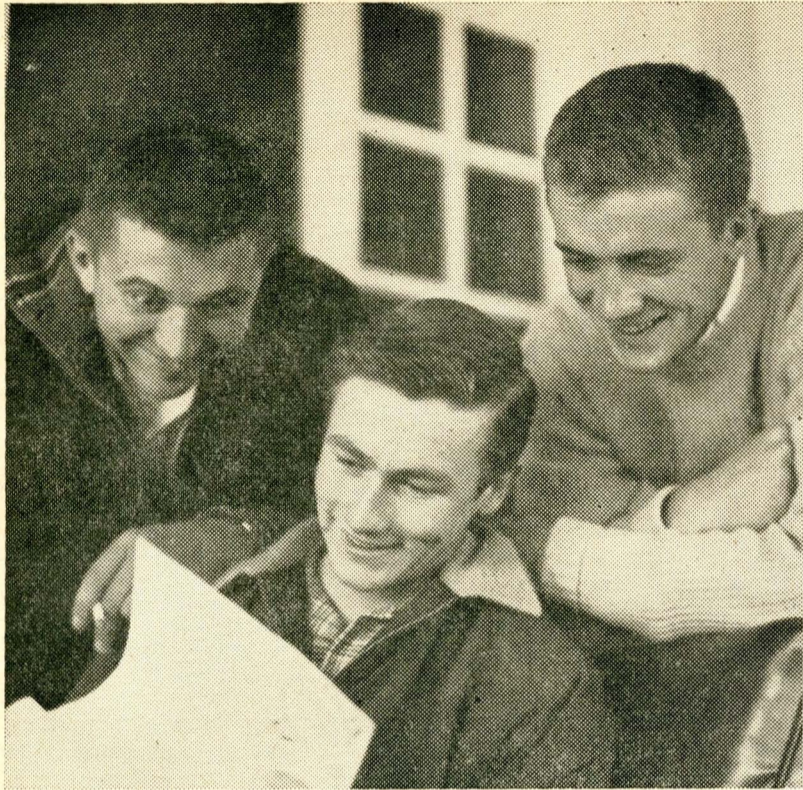


Greek Rushing, Activities Banned Winter Quarter



PETEY DRIVE—Chairman Dan Amell (center), Dave Zentner (left) and Bruce Weatherby (right) appear well pleased with the results of the fifth annual Petey Drive completed yesterday. As of Tuesday, contributors were Elementary council, Gamma Theta Phi, Kindergarten-Primary club, Sigma Phi Kappa, Sigma Tau Kappa, UMD-Y club and United Youth Fellowship. The drive is sponsored by Gamma Theta Phi.

By NEIL LANDRY
Statesman Editor

All fraternity and sorority Rushing activities and social functions were banned until the end of winter quarter in action taken Nov. 26 by Edwin O. Siggelkow, coordinator of student activities. The ban came in the wake of an all-Greek party Nov. 23 at the Blue Heron club in Piedmont Heights. The Greek letter groups were charged with violating University regulations prohibiting the presence of alcoholic beverages at University-approved functions.

Siggelkow and Robert J. Falk, assistant director of the Office of Student Personnel Services, met with representatives of the six UMD fraternities and sororities in Kirby Student center to inform them of the ban.

LaVerle McAdams, president of Pan-hellenic council, served as unofficial spokesman for the Greeks at the session. She suggested alternative punishments for the Greeks, saying those laid down by Siggelkow were "too harsh" and might result in "the disappearance of fraternities and sororities from the UMD campus."

Siggelkow said, "I felt that if the Greeks were able to make sufficient progress in the formation of a governing board for fraternities, and if they coordinated and broadened their rushing programs and developed inter-group programs of significance beyond mere parties, there is every probability the penalties could be reduced."



Siggelkow

Rushing functions are the means whereby the Greeks introduce students to fraternal organizations and pledge new members to their groups.

One fraternity member, who asked to remain unidentified, remarked, "I think the penalties are definitely too harsh, and I don't believe the frats will submit to them. If a fraternity doesn't hold social functions, it might just as well not exist at all."



Miss McAdams

"What's going to happen to extra-curricular activities on campus? If the Greeks don't support them, there will be none at all," he continued.

A fraternity officer said, "If the administration wants to break up social fraternities on campus, the school is going to suffer a great deal."

Siggelkow said, "I felt that this particular incident stemmed from the lack of a well-coordinated fraternity-sorority system and a general lack of appreciation of the inter-relatedness of the groups with one another and with the University."

Siggelkow added, "I would like to indicate that there is no desire to injure the fraternity-sorority system, but the question of their continued existence in good standing is dependent upon their willingness to accept the responsibilities outlined for recognition on this campus."

As the Statesman went to press, indications were that the Greeks would appeal the ban to the Provost's Committee on Student Affairs.

The UMD Statesman

Vol 25 Duluth, Minnesota Friday, December 6, 1957 No. 10

Tryouts Tonight As Morgan Prepares Next Production: Odets' 'The Flowering Peach'

Tryouts for the University Theatre winter quarter production, **The Flowering Peach**, by Clifford Odets, began yesterday in Main auditorium. Tryouts will continue tonight, Monday and Tuesday at 7:30 p.m. in the auditorium.

William Morgan of the UMD Speech department will direct the play. He also is directing **The Seven Year Itch**, by George Axelrod, currently running at the Duluth Playhouse.

Odets is the author of many well-known contemporary plays,

among them **The Big Knife** and **The Country Girl**, which became an Academy Award winning movie. **The Flowering Peach** is a folk play telling the story of Noah and his family in terms of present-day implications.

Menasha Skulnik, noted Jewish actor, played the lead in the play when it won the Critic's Prize award as a Broadway stage production two years ago.

When it opens on the UMD stage Feb. 12, the play will have its first off-Broadway production since its New York appearance, according to Morgan.

'Fantasies' To Begin Holiday Season; Organizations Join To Decorate KSC

By JOANNE ERICKSON

Christmas Fantasies, a semi-formal dance featuring Mickey Levine and his 11-piece orchestra, will be held in the Kirby Student center ballroom tomorrow, 9 p.m. to 1 a.m. Tickets which are on sale in Main and KSC are \$1.50 per couple. They can also be purchased from Mike Berman, who will be dressed as Santa Claus advertising this event.

Decorations for the dance are being planned by Ginger Root and will consist of sugar-plum fairies, soft blue net and silver white branches. Both patios will be winter gardens of trees shining with colored lights. Banked snow will set off the scene.

Two floor shows will provide entertainment in the cafeteria during the dance. Appearing on the program will be Kathy Hannibal, vocalist; Bob Richie, pi-

anist; Butch Dahlin, drummer; Don Hogstrum, vocalist, and a male quartet. Free refreshments will be served.

Members of the Kirby Student Center Social Special Events committee supervised the decorating of KSC for the holiday season. Ginger Root planned the decorations which consist of paper murals and paper sculpture. Christmas greens serve as background for these ornaments. A large Christmas tree, traditionally decorated, has been placed in the main lounge.

The Social committee sought the help of all campus clubs and organizations for this project. The sororities and fraternities worked together to decorate the sections of KSC assigned to them Dec. 4 and the other organizations completed the decorating Dec. 5.

Free apple cider was served to workers on both evenings. Dick Puglisi led informal group singing and the students blended their voices in famous Christmas carols.



SANTA'S HELPER?—Maybe not. Maybe Gail Salo is merely submitting a request for two or three "A's" on her final exams. Mike Berman, as Santa Claus, would probably like to comply but Santa has no more pull with the instructors than the average student.—(Photo by Ken Moran.)

The freshman cabinet will meet at 7:45 Dec. 11 in Library 134. Any freshman interested in participating in the freshman visitation to area high schools program are asked to attend this meeting.

Polio Shots Now Available

Polio vaccinations will be available at the Health Service, Washburn 100, beginning Dec. 9. "Vaccinations will be available every day, excepting Saturdays, Sundays, and holidays, 9 a.m. to 1 p.m. and will enable students to receive the three recommended doses," said Dr. Dwyer.

"Even if students received their first or second shots longer than the recommended wait, it is still important," he said, "that they come to finish the series. The emphasis should be put on the necessity for the total of the three doses."

The cost will be \$1 per shot.

National Science Foundation Institutes On UMD Campus

(UMD-NS) — For the second successive year, UMD has been chosen as one of the nation's campuses upon which National Science Foundation institutes for high school and college teachers of science will be conducted.

"We are gratified in receiving this signal distinction for 1958, shared in Minnesota only with the University's Minneapolis campus and Carleton college," UMD Provost R. W. Darland said last week.

"It represents a new challenge and a grave responsibility in light of the emphasis upon Am-

erican science and science education brought about by Russia's spectacular 'firsts'."

Announcement of UMD's selection was made by Alan T. Waterman, director, National National Science foundation, under whose auspices 108 institutes will be conducted in 104 educational institutions next summer.

The appropriation awarded UMD for the coming year is \$45,600. It covers expenses of a minimum of 58 high school teachers attending the Duluth institute, according to William

(Continued on Page 5)



DIRECTOR—William Morgan of the UMD speech department works over set designs for the UMD Theatre winter quarter production of "The Flowering Peach," by Clifford Odets. Morgan will direct the folk story of Noah and his family as it is seen in relation to present day implications.—(Photo by Dick Koch.)

U.S. Editors Study Education Situation

Iowa State

(ACP)—Russia's winning the space satellite race may be only a reflection of a race the United States has been losing for some time, think Iowa State DAILY editors. That is the "race for education and progress in general."

Here are the Iowans' comments.

The United States may very well be losing more than just the satellite race this year—our country may be losing the race for education and progress in general.

Schools in this country are overcrowded and understaffed, this we all know. But the horrible truth is that in addition to these ills, our high school curricula are inadequate, buried under archaic and unwise planning.

A sociology class at Iowa State recently drafted a high school program that they would like to have for their children. The curriculum, when it was finished, could never have been put into play in an average small Iowa high school, and even some of the larger schools would probably have to hire second-rate teachers to cover all the course work desired by this group. What is even more sickening is that the brave new curriculum planned by these college students is still far short of existing European and Asian standards!

The high school program proposed by the group would offer these courses:

REQUIRED		OFFERED	
Course	Year	Course	Year
Mathematics	2	Shorthand	1
Chem., Physics	1	Typing	1½
Gen. Sci. or Biol.	1	Vocational Studies	
History	1	(Ag., H. Ec., and Industrial)	4
English	3	Mathematics	2
Gov't.	1	English	4
Geography	1	Government	2
Economics	1	Geography	2
Typing	½	Psychology	½
Physical Educ.	4	Latin	1
Music	4	Bookkeeping	1
		Art	2

In addition to these courses, the program would offer football, baseball, basketball, track, golf, swimming, tennis and an adequate intramural setup, much more elaborate than those being used now in Iowa schools.

Now let's look at a high school program from the Middle East: (Incidentally, we are told that 95 percent of the population in the area around this school attend the classes. Courses are taught seven hours a day six days a week, and this is not uncommon throughout Europe as well as in the Middle East.)

REQUIRED

Course	Year
Physics	3
Chemistry	5
Mathematics	2
Geometry	2
Algebra	2
Government	2
Arabic	5
English	5
Physical Educ.	5
Drawing	5
Health	2

This curriculum comes from a science section of the school. We aren't certain what other courses are offered as electives, but we do know that a complete athletic program is offered.

Is it any wonder that Russia beats us with a satellite program, or that European scholars and scientists scoff at our educational system?

There has been some talk about school reorganization in Iowa recently. One would assume that anyone looking at this Iowa State sociology proposal, then at the Middle East curriculum, and then at the curriculum of an average small Iowa high school, would break out in a cold sweat, but no one seems to be alarmed.

"We're making progress," they say.

"We don't mind better schools, but we'd hate to lose our girls' basketball team," they say.

These statements and others like them all narrow down to the fact that Americans want progress, but they are snug and comfortable where they are and don't wish to upset their way of life for the sake of progress.

They would welcome a dozen teachers with Ph. D.'s for their children to profit from, but they still want Johnny to go to Mudville high and be on the football team.

Our school system needs some radical changes, both in curriculum and size.

FORUM

To the editor:

In the Nov. 22 edition of the Statesman, Floyd Johnson wrote on a problem of a student who was injured in physical education class, and as a consequence found himself faced with a doctor bill to pay. The implication of the article was that the student had been forced to take medical insurance which proved inadequate. The implication was unjust.

I feel that some clarification of what medical services and hospitalization benefits the UMD student may expect from the insurance which he is required to have and from the Health Service is in order.

Each student is required to have in force hospitalization insurance which meets minimum standards of indemnity. This can be insurance carried by his parents, purchased by himself independently, or purchased through the University which has a special contract with Blue Cross. This latter contract is inexpensive and provides satisfactory hospital coverage. It contains no provision for payment of doctors' fees.

Those students engaged in intercollegiate athletics have special insurance coverage provided by the University for both hospital and physician services.

In addition to the above, all students have physician services provided through the Health Service without further charge. In some cases (and this was true in the case of the student mentioned in the stated article) a specialist is required for care. Whenever this is necessary, the student is personally responsible for the fee charge. If a student wishes to avoid the burden of a large physician's fee, then he may provide himself with insurance which is available through Blue Shield or any number of other insurance companies.

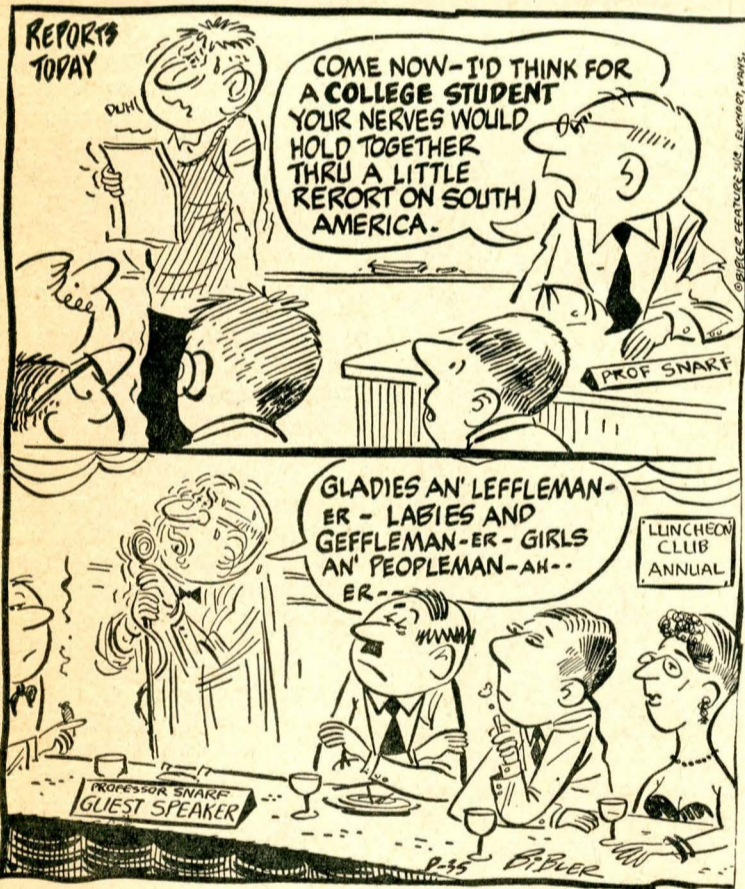
John J. Dwyer, M.D.

To the editor:

Glancing through the last issue of the Statesman I was depressed at the lack of student opinion being expressed in the form of letters to the editor, etc. Rather than risk the continuance of what could become a dangerous trend, may I join the ranks of the persons of questionable intelligence who write "letters to editors." If you don't mind, I'll just recall some thoughts that occurred to me while reading the paper. For instance, it was comforting to learn that many college students in England are also unable to read. Regarding the big name quandary, that June whats-her-name was. Got to wondering the other day, how many raccoon coats are being worn at UMD. Haven't seen a one, myself. How about some campus-minded club sponsoring a "Let's Keep Our Campus Clean" trash can. This would be a good place to deposit some of the debris I occasionally find in my notebook. According to the cafeteria caterwauling there must be a good many students with tentative contributions "a la Pitt." We could also toss Rose Bowl tickets, unused Student Activity cards, Why Roosevelt Won't Run for a Third Term articles, charters of chauvinistic organizations, etc. The possibilities are unlimited. This thing could snowball into a fine tradition in years to come. As a final note, I just noticed that June whats-her-name was a well-known personality, not a Big Name.

Richard R. Hoff.

LITTLE MAN ON CAMPUS by Dick Bibler



CASSANDRA

The Student Commission might be interested in a movie playing at the Tower Theatre in St. Paul this week: "The shock by shock confessions of a SORORITY GIRL." And who should be starring but Susan Cabot and DICK MILLER. How about that, Mr. President . . . ?

The Seven Year Itch

Axelrod Play Merry, Mad, Mirthful

By LEN SKOBEL

The Duluth Playhouse presentation of "The Seven Year Itch" starts out to be a farce, but ends up being a whale of a good comedy. Dr. William R. Morgan, UMD Speech professor, directs this tasty morsel with a professional hand, treating his audience to a seven-course meal of mirth, madness and merriment.

The plot of this play by Broadway playwright George Axelrod centers around the "typical" New York apartment dwelling family—the husband, the wife, the only child and the "other woman." This is meat for any play, and Axelrod has a field day with the characters he has created and the lines they speak. Some of the lines may border on plain slapstick, but the distinction is very fine, and the majority of lines are slick, polished and downright funny.

Richard, played by Duluth lawyer Dennis F. Donovan, is an advertisement agent for a publisher of pocket book editions. Mr. Donovan handles his part of the husband free-for-a-weekend with much freedom of both expression and lines. He is much of a comic in his character projection, only at times he gives the impression of being unfamiliar with his lines.

Richard has decided to send his lovely wife, Helen, played by UMD sophomore Leta Powell, and their son, Ricky, to the country to escape the heat of the New York city summer. Miss Powell is a natural for the stage, and an eye-full to boot. She handles her part with that rare mixture of humor and sophistication.

Exit wife, enter "other woman," in the form of a combination Jayne Mansfield, Marilyn Monroe and Judy Holiday. The part of the other

woman is accomplished with ease by Claudia Pettigrew, who proceeds to capture the audience in her every body movement and facial animation. Without a doubt she is the champagne of this feast served by Dr. Morgan, literally bubbling all over the stage. She does her finest when engaged in a "dumb blond type" line. EXAMPLE: "I'll have Scotch with seltzer please. Seltzer is supposed to go with Scotch, ain't it? Before I came to New York I used to drink Scotch with Pepsi Cola, but that was before I found out that that was the wrong way."

One by one the various courses to this feast are served to the audience in the form of some terrific character acting. A dish of sauerkraut is viewed in the form of Dr. Brubaker, a German psychiatrist played by John S. Hoff, who tries to set Richard straight on his sex problems. Herr Hoff is as authentic as a stein of German beer. Carol Gould and Marie Claude Paris, two UMD coeds, fill the stage to overflowing with enough feminine pulchritude to last a lifetime, in their role as more of the women in Richard's secret Walter Mitty type life.

The stage setting and lighting are up to snuff, and make the viewers right at home in this New York apartment. The one technical difficulty of this production seemed to be in the sound department—records played too soon, door bell sounding like telephone and vice versa.

All in all, though, what starts out to be nothing more than maybe a midnight snack turns out to be a splendid banquet, and has one leaving the "table" with that relaxed, good-all-over feeling and a yearning for his favorite chair for an after dinner drink, a smoke, and a succession of dreams about Leta, Carol and Marie Claude.

The UMD Statesman

Vol. 25 DULUTH, MINNESOTA, NOVEMBER 15, 1957 No. 8

Official student newspaper of the University of Minnesota at Duluth, Minnesota. Published each Friday during the college year excepting holidays and examination weeks. Editorial and business offices in Washburn Hall, Room 109, University of Minnesota, Duluth.

Second class mailing privileges authorized at Duluth.

Printed at the Labor World Printing Company, 31 East Michigan Street, Duluth. Subscription rates: One dollar per quarter or two dollars per year mailed upon request.

EDITOR		BUSINESS MANAGER	
Neil Landry		Don Hempel	
Managing Editor	Sandie Weinberg		
News Editor	Gretchen Myers		
Feature Editor	Bill Ames		
Sports Editor	Julie Cohen		
Rewrite Editor	Lenore LaSalle		
Copy Editor	Arlene Pisila		
Circulation	Gail Burton		
Art Editor	Bob Plouffe		

EDITORIAL STAFF

Joyce Murphy, Karin Kelly, Mary Jane Sethre, Esther Korpi, Sue Cooke, Floyd Johnson, Joanne Erickson, Len Skobel, Dick Bakke, Carol Lathrop, Ron Proulx, Marietta Brower, Ginger Root, Tom Bradseth, Ed Tymura, Ken Moran, Dick Koch, Dave Gustafson, Betty Olson, Lois Smith, Karen Hedberg

Sweetness & Light

By FLOYD JOHNSON

It is feared that UMD may not have a big-name band to provide music for her prom this year. In keeping with the apathetic attitude of UMD students, we go on record as being in complete agreement with a fellow student and friend (who shall remain unnamed) who said, "I don't care who they get. If all else fails, why not get the Chmielski Brothers band to perform? It would be pretty hard to find a bigger name than theirs."

Because we are, or rather, were, members of the now defunct Veterans Club, we spoke last week to the elected president of the club, Richard Fournier. Fournier, because of outside business interests and a resulting lack of time, resigned his post, or at least said he would resign if he knew who to hand his resignation to, and refused to comment on the situation. However, our interests were mainly mercenary, and we did get the information out of Dick that the Vets club treasury holds the magnificent sum of \$1.40. This news, we expect, will cause six ex-army men to get together over a six-pak and charter a new edition of the club, which, of course, will be the most influential group on the campus. That beer is awful stuff.

After watching the first two pre-season exhibitions of basketball (?) here, our conclusion as sport experts (Arno Goethel, watch out!) is that the Bulldogs lack a first rate, fast moving center, the lack of which may cost the dogs more than one ball game. Jack McKillop, center of the last three years, will be sorely missed. A bright spot exists, however, in the development of Al (preacher) Keiski, who looked pretty good at forward.

Movie Review: "Pal Joey," which stars Frank Sinatra and withstands Rita Hayworth and Kim Novak, is worthwhile seeing only because of Sinatra's performance. Not to be overlooked, however, is Barbara Nichols' playing of a bit part, which is about the worst piece of acting we can remember seeing in a long while.

Kirby Group Presents Top Movies

The Education and Culture committee of KSC will present the following program of movies during the winter quarter: **The Red Shoes**, Jan. 8; **Henry V**, Jan. 24; and **Hamlet**, on Wednesday, Feb. 26.

The movies will be shown in the Science auditorium, starting at 8 p.m. Admission will be 25 cents for faculty, staff, students and the public. For the complete series, students may purchase tickets for 50 cents

upon presentation of activity cards.

Tickets for the complete series and for **The Red Shoes** may now be purchased at the KSC information desk from 11 a.m. to 3 p.m., and they will also be available at the door.

Old Masters and Contemporaries

Christmas Story Portrayed At Tweed

(UMD-NS) — "The Christmas Story" as portrayed by the old masters and leading contemporary painters is the December exhibition at UMD's Tweed gallery, 2531 East Seventh street, Duluth.

Curator Orazio Fumagalli has assembled a group of 24 etchings, engravings and wood cuts, half of them by classic painters, as a special pre-Christmas exhibition.

Formal opening of the exhibition was held in conjunction with a public reception from 1 to 5 p.m. Dec. 1. Regular gallery hours are 1 to 5 p.m. daily

except Mondays. The gallery is open free to the public.

December object of the month is a 17th century German tapestry on loan from the Metropolitan Museum of Art, New York.

Loaned by the National Gallery of Art in Washington, D. C., the Cincinnati Museum of Art and the Minneapolis Art Institute, the Christmas art works illustrate beautifully the story of the nativity, Fumagalli said. "The whole exhibition has been put together as if these prints were illustrations included in the pages of the Bible," he points out.

Among the masters represented are Rembrandt, Tiepolo, Durer, Cranach and Callot. Eric Gil is probably the best known among the contemporary artists — British, French, English and American — represented in the exhibition.

Kappa Delta Pi to Initiate Thirteen Education Students

Thirteen students of education were pledged to Kappa Delta Pi at the third Zeta Beta chapter meeting held at Kirby Student Center Nov. 20. The following people have now given their vows to the honor society in education and are awaiting their initiation: Jeanette Darland, Laurene Gjenste, Dennis Humphreys, Patricia Johnson, Judith Kroll, Margaret Lufholm, Mary Pat Miley, Mary Montague, Philip Mosher, Roger Oman, Barbara Pond, Michael Santoro, and Caroline Van Vlymen.

The initiation will take place Dec. 18, in conjunction with a Christmas party to be held at the home of Miss Dorothy Smith, counselor of the UMD chapter. Russell Gran is president, and Beverly Burns, Carol Chesney,

and Frank Dimberio are vice president, secretary, and treasurer, respectively.

The society encourages high professional, intellectual, and personal standards, and recognizes outstanding contributions to education.

The Zeta Beta chapter has already set up a schedule of programs which are of professional and social, as well as general, interest and extend to June of next year.

FOR COMPLETE DRUG NEEDS!

- Fountain Service
- Prescriptions
- Magazines

STOP AT

Chester Park Pharmacy, Inc.

1328 EAST FOURTH ST.
Duluth, Minnesota
RA 4-0040

University Supply Headquarters

- RING BOOKS
- NOTE BOOKS
- SLIDE RULES
- ART SUPPLIES
- LUGGAGE
- DRAWING SETS
- PORTABLE TYPEWRITERS

A & E SUPPLY COMPANY

Complete Office Outfitters

212 West Superior St.
Duluth RA 2-0594

ALWAYS MAKE YOUR FIRST CHOICE BOYCE!

Boyce Drug Store

TOWN and COUNTRY SHOPPING CENTER
OR
335 WEST SUPERIOR ST.

a gift from **Cooks** means more

For DELICIOUS LUNCHES or Sandwiches To Take Out stop at **SID'S DELICATESSEN**

ONLY 3 BLOCKS FROM CAMPUS
1830 E. 8th St. RA 4-9910

T G I F at **EMBERS** 11:30 p.m.

CAPEZIO SHOES now at **Albenbergs**



OPEN SUNDAYS

"Duluth's Party-Time Headquarters"



COMPLETE LINE OF SNACKS and BEVERAGES FOR YOUR STUDY HOURS.

- 24-HR. ICE CUBE SERVICE -

DULUTH BEVERAGE MART

614 EAST 4th STREET

Call RA 2-7865

Open Until 10 p.m. Daily

You've Tried The Rest . . .

Now Eat The Best!

AT

SAMMY'S PIZZA PALACE

"Take Out Orders" — Call RA 7-5592

- DOWNTOWN DULUTH • WEST DULUTH • SUPERIOR
- HIBBING • EAU CLAIRE • ST. CLOUD

Millard Berg's

"First and Finest Color Lab In The Twin Ports"

Everything Fine in the Photographic Line

EXPERT CAMERA REPAIR

3 West Superior St., Duluth 2, Minn.

RAndolph 7-7404

beginner or expert . . .

for the best in . . .

SK

clothes and equipment

... for adults and children

Sunde | rosskopf • san marco • wunder • lenssen
holmenkal • goy-winter • lamparter • grassauer



103 1/2 E. SUPERIOR

"The Very Finest From Europe"



Beethoven Concerto

UMD Student Featured In Concert

(UMD-NS) — A young Duluth pianist and organist whose name and achievements are becoming known in the Upper Midwest will be featured in Beethoven's Fourth Piano concerto in the University orchestra concert at 8:30 p.m. Thursday, Dec. 12, in Main auditorium.

She is Arlene R. Anderson, daughter of Mr. and Mrs. Victor Anderson, 301 Morley Parkway, a UMD music major whose keyboard interests and efforts extend back to the first grade.

Among her distinctions are superior ratings in auditions conducted by the National Federation of Music Clubs and the Minnesota Music Teachers association and in the Minnesota-Tanglewood selections. She was a finalist in the latter competition last year.

Now organist at the Lutheran Church of the Good Shepherd, Miss Anderson plans graduate work in sacred music after obtaining the B.A. degree at UMD. She also has served as choir director and organist at Salem Covenant church, Duluth.

A graduate of Duluth East high school, she played viola in the East orchestra and was piano accompanist for East choral groups. She formerly played viola in the Duluth Symphony orchestra and presently

plays this instrument in the UMD orchestra.

She is accompanist for UMD choral director Allan L. Downs, concert baritone, and has accompanied other UMD artists in concert appearances.

A member of Sigma Alpha Iota, national honorary women's music fraternity, Miss Anderson is majoring in music and minor-ing in English at UMD. She is a native of Oklahoma City, Okla.

Orchestra director Robert W. House, associate professor and head of music, has chosen two other selections for the pre-Christmas program.

They are four dance episodes from Aaron Copland's "Rodeo," and the andante movement from Gustav Mahler's Second symphony.

The concert will be open without charge to the public as well as to UMD students and staff.

CONCERT PIANIST—Arlene Anderson, UMD music major, will be featured in Beethoven's Fourth Piano concerto in the University orchestra concert. The pre-Christmas program will be given at 8:30 p.m. Dec. 12 in Main auditorium.

KUMD Broadcasting Schedule

Monday through Friday
 3:00 Sign On
 3:01 Rendezvous with Rhythm
 Ed Deggendorf—Don Sliter
 4:00 News
 4:05 Musical Matinee
 5:00 "Uncle John"
 John Lokke
 5:15 Transcribed Show
 5:30 News Summary
 Dr. Haakenson
 5:45 Sport Show
 Bill Jacott (Thursday)
 6:00 Weather Forecast
 6:01 Evening Serenade
 6:59 Headlines: Weather
 7:00 Jazz Unlimited
 7:30 Music by the Masters
 8:30 Study Time
 Dave Erickson — Don Ham-
 mer — Lauren Sandquist —
 Stuart Satrun
 8:55 News

9:00 Study Time
 9:55 News
 10:00 Sign Off
 Saturday
 9:00 Sign On
 9:01 The Morning After
 Roger Millsop—Mike Fedo
 10:00 Weather Forecast; The
 Morning After
 12:00 Club 880
 John A. Rupkalvis
 1:00 Saturday Music Hall
 3:00 Sign Off

Minnesota Geological Survey Reports Discovery Of Sands

(UMD-NS)—High-silica sands found in the sandstone formations of east-central and south-eastern Minnesota could be used for various industrial purposes, according to a report just published by the Minnesota Geological Survey at the University of Minnesota.

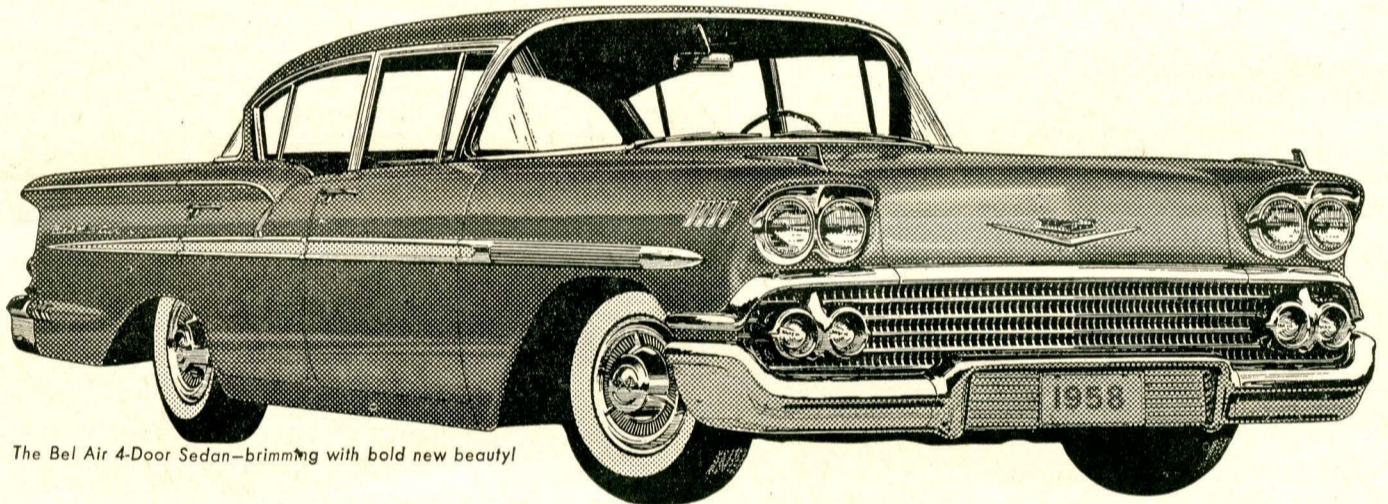
The sandstones are exposed extensively along the valley walls of the Mississippi, Minnesota and St. Croix rivers and their major tributaries, Professor George A. Thiel, head of the University's geology department, points out in his report—"High-Silica Sands of Minnesota."

Several of the sandstone for-

mations, Professor Thiel explains, crop out also on the divides between major drainage lines or are covered with no more than a thin mantle of glacial sediments.

Among uses for which Minnesota sands are suitable, according to the geologist, are glass-making, foundry molds, filter beds for water filtration plants and sandblasting.

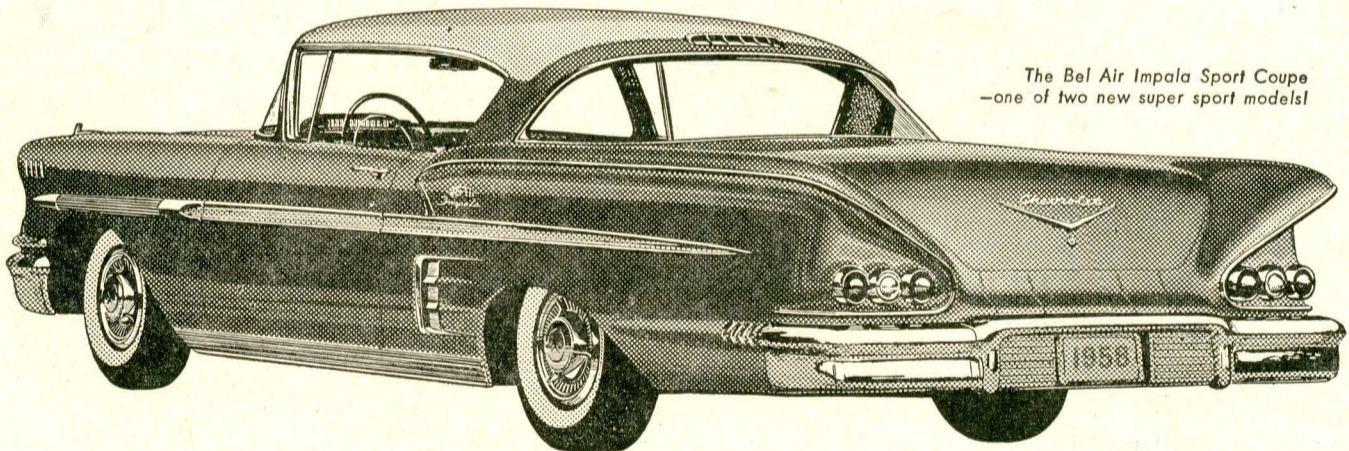
A copy of the report may be obtained free by writing to: Minnesota Geological Survey, Pillsbury Hall, University of Minnesota, Minneapolis 14. Professor George M. Schwartz is director of the survey.



The Bel Air 4-Door Sedan—brimming with bold new beauty!

Come try the quickest combination on the road!

CHEVY'S TURBO-THRUST V8 WITH TURBOGLIDE



The Bel Air Impala Sport Coupe —one of two new super sport models!

There's never been an engine-drive combination like this one!

Chevrolet's Turbo-Thrust V8* introduces a radical new slant on engine efficiency with the combustion chambers located in the block rather than in the head. Turboglide* —the other half of the team—is the only triple-turbine automatic drive in Chevy's

field. It takes you from a standstill through cruising in a single sweep of motion. Harness these triple turbines to a 250-h.p. Turbo-Thrust V8—or the 280-h.p. Super Turbo-Thrust*—and you step out instantly in any speed range. Nothing else on the road goes into action so quickly, so smoothly. Your Chevrolet dealer has the combination!

*Optional at extra cost.



Skiers!

The big swing is to Hart, the world's finest Metal Ski. If you want to ski better and have more fun, it will pay you to buy HART . . .



Come in and let us advise you.

THE SKI HUT

Corner 11th Ave. E. & 4th St.

Open from 12:30 to 9:00 p.m. Weekdays and from 9 to 6:00 p.m., Saturdays.

Only franchised Chevrolet dealers display this famous trademark



See Your Local Authorized Chevrolet Dealer

Three Schools Here For UMD Invitation Debate

Three schools will send teams to UMD's first invitational debate tournament today. Wisconsin State college, Eau Claire, and Hibbing Junior college each will send two teams. Minnesota State college, St. Cloud, will send four teams. UMD will have six teams participating.

There will be three rounds of debate on the 1957-58 national intercollegiate proposition, "RESOLVED, That membership in a labor organization as a condition of employment should be illegal."

The three rounds of debate will begin at 1, 2:30 and 4 p.m. All tournament activities will be held on the new campus, tournament headquarters to be in KSC 252.

The debates will be judged by the visiting coaches and UMD faculty. UMD students are requested to volunteer to serve as chairmen-timekeepers. Anyone who can serve for one or more of the three rounds is asked to contact the office of the Speech department, Main 102, phone 369.

Dr. Oscar Ingram is coach of the St. Cloud debaters. Miss Grace Walsh is the Eau Claire coach, but the team may be accompanied by Dr. David Welker, who was on the UMD speech faculty 1955-56. Mr. Don Sundquist, a UMD alumnus prominent in UMD Theatre, will accompany his Hibbing Junior college debaters.

UMD affirmative teams will be Don Peterson and Ray Anselment, Wes Blasjo and Paul Kent, and Jim Barnard and Sherman Gonyea. Negative teams will be Jack West and Pat Rooney, Bill Mularie and Mike Berman, and Ellsworth Johnson and Cornelia Dacey or Delbert Garrett.

Nativity Play Enacted At Tweed Gallery

(UMD-NS) — A moment of early English drama was re-enacted in Tweed gallery Dec. 4 in conjunction with the current display of woodcuts, etchings and engravings relating to the Nativity. Harold L. Hayes, director of the University Theatre, directed the York Nativity play which was performed by Cornelia Dacey, Marian Kukkola, Ronald Raver, Robert Kutsi, Ronald Reed and James Houle.

Minister Sets Discussion Meets

Thomas L. Smith, minister of the First Unitarian church, will conduct a series of religious discussion meetings in which students will seek answers to questions concerning such things as the value of prayer and the meaning of life. The first meeting will be held at 4 p.m. Jan. 9, and following discussions will be conducted every second and fourth Sunday through April.

Institute Conducted On Campus

(Continued from Page 1)

R. McEwen, professor of mathematics and chairman of the UMD division of science and mathematics.

Director of the 1957 institute, attended by 76 teachers, Professor McEwen will be in Washington Dec. 9 and 10 for briefings as the director of the 1958 program also.

Under the institute plan set up experimentally in 1953 under Congressional appropriation, teachers receive travel, living, book and supply and tuition expenses in attending the institutes.

The 1958 program, involving \$5,340,000, is designed to accommodate approximately 5,000 high school and 250 college teachers.

The institutes provide intensive training in science subject matter. They also have pointed the way for colleges and universities in developing courses and instructional methods of particular help to prospective teachers of science and mathematics.

"Good science teachers are apt to be the first to stimulate an interest in science among our young people in secondary schools," Dr. Waterman noted.

"Instruction that contains out-dated concepts or materials and is not stimulating tends to weaken youths' motivation toward science careers.

"These institutes help thousands of hard-pressed high school science teachers to learn at first hand the rapidly advancing developments in today's science, mathematics and engineering."

The UMD program will include work in general science, mathematics, biology, chemistry and physics. The Minneapolis campus will offer two institutes, one each in biology and physics. Carleton college will offer work in physics.

Last year Professor McEwen received applications from hundreds of high school teachers across the country to attend the 1957 UMD institute.

NSF stipends for the participating teacher include \$75 per week living expenses, with additional allowances for dependents to a maximum of four.

Teachers interested in attending the UMD institute should apply directly to Professor William R. McEwen, Science Addition 108, University of Minnesota, Duluth Branch.

Home Ec Sets Children's Party

The Home Ec club is planning a Christmas party to be given on the evening of Dec. 11 for the children of the Duluth Children's home. Carols will be sung, and each child will receive a gift. Members will also prepare and serve refreshments.

Members of the UMD Barkers will sit in a special cheering section at the UMD vs. Minneapolis Bungalows game tomorrow night. Barker membership may be obtained today in Kirby Student center.

Gustavus Prof Religion Week Keynoter

The speaker for Religion in Life week is Dr. Richard Reusch, professor of philosophy, Gustavus Adolphus college. Dr. Reusch will speak at the banquet to be held in St. Paul's church Jan. 23. He will also be present at the discussions, convocations and coffee hours slated for Jan. 22 and 23.

Dr. Reusch, born in Caucasus, Russia, holds eight degrees, including that of doctor of divinity. He has written 24 books in five languages.



MYSTERY HELMET—The mystery of the cast iron helmet found this summer on a farm near Herbster, Wis., originally concerned the item's origin and value. Now that the investigation conducted by Dr. Raymond Darland, provost, and Dr. Julius Wolff, Department of Political Science, has revealed the helmet to be a replica of Dresden armor manufactured in Ilsenburg, Germany, in the nineteenth century, the question is, "How did it get in a Wisconsin farm field?" Meanwhile, back in Dr. Darland's office, the closed-mouthed helmet sits.

THE RED SHOES
January 8
SCIENCE AUD

Meet Your Friends at
GUSTAFSON'S
FOR A GOOD LUNCH

- FOR SALE -
EVENING GOWN
Dark pink, ballerina length.
20-25 inch waist
Full nylon knit skirt.
Call RA 2-0606

FOR FAST SERVICE
MEL PETERSON'S
M & C SERVICE STATION
6th Avenue East and 6th Street
On your way back and forth to the campus.
Open 6 a.m. to Midnight.
Quality Gasoline for Less plus Premiums.

FOR THE VERY BEST IN HOLIDAY DINING
GO TO THE
Gourmet HOUSE
For Reservations Dial RA 7-9442
4th Ave. W. & Superior St.
Open Till 1 a.m. Mon. thru Sat.

Desbitt's
a soft drink made from real oranges
City Bottling Co.
Duluth, Minn.

NORTHWEST Stationers, Inc.
Dial RA 7-7295 or 7-7296
VERSA LOG SLIDE RULES

GALLANT MEN ON THE MOST FAMOUS CHASE IN SEA HISTORY!

The thrilling story of three small fighting ships and the deadly raider they brought to bay!

THE RANK ORGANIZATION PRESENTS
A MICHAEL POWELL AND EMERIC PRESSBURGER PRODUCTION

PURSUIT OF THE GRAF SPEE

She sang of love... while men waited for death or glory!

VISTAVISION TECHNICOLOR

STARRING JOHN GREGSON - ANTHONY QUAYLE
PETER FINCH as Captain Longidoff
WRITER, PRODUCED AND DIRECTED BY MICHAEL POWELL AND EMERIC PRESSBURGER

NOW SHOWING! LYRIC THEATRE

Cagers Meet Northland College Tomorrow Night

Tomorrow night the UMD basketball team opens their intercollegiate schedule against Northland college at Ashland, Wis. They will begin MIAC competition Tuesday, Dec. 10, against St. John's at UMD.

After two warmup games, frosh-varsity and alumni, the starting lineup is fairly well set. Several freshmen have shown considerable promise and may gain starting positions shortly.

Last Friday UMD defeated the alumni, 84-69. Many former

stars for UMD gave the varsity a good game in the first half but lost some of their steam in the latter stages of the game. Jack McKillop, a 1957 graduate, paced the alumni with 23 points. He holds the record for total points scored at UMD. The other alumni players were Chuck Hiti, Tom Stark, Pug Norlander, Bob Seikkula, Rudy Monson, Dick Veech, Tom Richardson, Mel Koivisto, Mark Vukelich and Paul Nace.

Leading point maker for the varsity was Jon Sampson with 19. Darryl Faille led in rebounding with 11, at the same

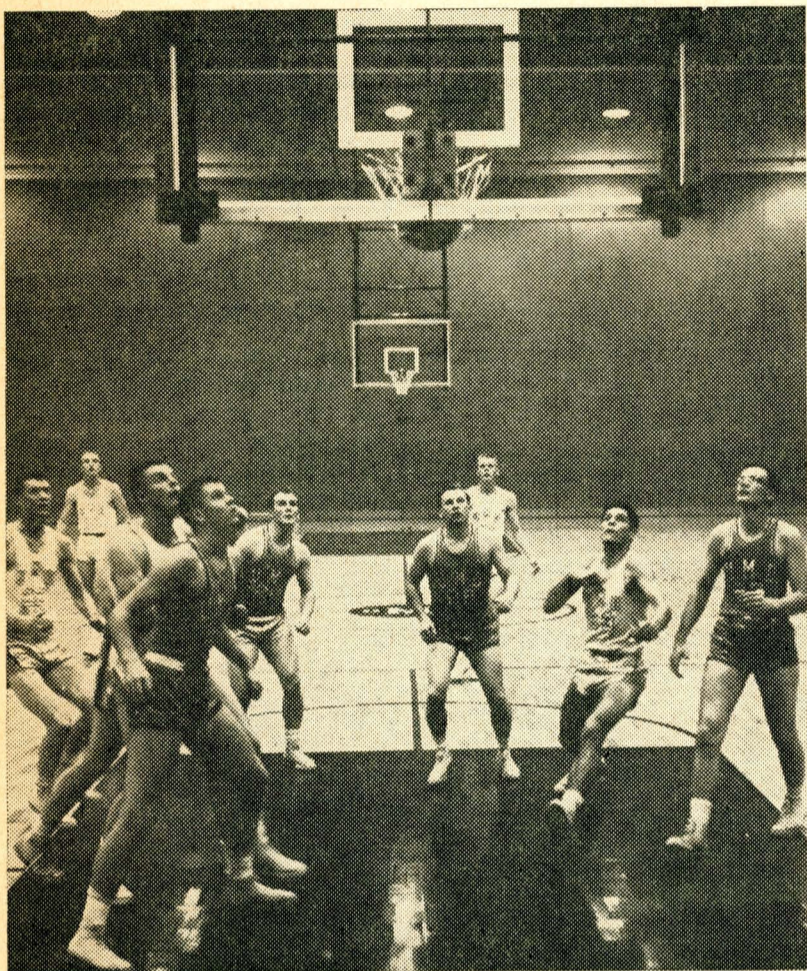
time scoring 11 points.

Probable starters against Northland college will be Harold Bergstedt at center, Bob Monson and Al Keiski at forwards, and Jon Sampson and Bob Dodge at guards. Leading contenders to take over starting positions are Faille, Dave Baker and Tom Stone. Several reserves will provide a strong bench and include Bob Olson, Sherman Johnson, Neil Wagner, Dennis Holbert, Marsh Levinson, Skip Fontaine and Dave Laiti.

In pre-season forecasts UMD is rated a leading contender for the title now held by Hamline.

Although handicapped by inexperience, the squad has several outstanding freshmen who should develop with a little seasoning. The team has several tall men, and several have good speed on the fast break. The offensive scoring is well balanced with every player capable of leading the scoring for a game.

Barring unforeseeable bad breaks, the team should give the rest of the conference a good run for the title. The squad has an able coach and will give the fans a lot of exciting basketball this season.



INTENT—All ten cagers seem awed momentarily as they watch the sphere sail through the hoop. Apparently only the alumni, dark jerseys, were dumbfounded, as they found themselves on the short end of an 84-69 score at the hands of the varsity in last Friday's game.

Co-captain Gains Most Yards In 1957 Season

(UMD-NS) — Marv Heikkinen, Esko's hard-playing halfback, netted 204 yards on the ground and 230 via the pass route to lead UMD statistically during the 1957 season.

The alert senior and co-captain proved also to be UMD's leading scorer with 18 points in a season which saw the Bulldogs win three of eight. One game ended in a tie.

Although UMD will lose its top yard gainer, statistical departments were otherwise dominated by lower classmen who could greatly strengthen UMD in coming years.

Only three seniors figured in the statistics. Fullback Ron MacDonell, Duluth, finished fourth in rushing with a 68-yard net. Dick Forbort, Duluth, snagged 4 passes for 47 yards.

Junior Wayne Rau, Duluth, and sophomores Bob Dodge and Bob Visina, both of Duluth, carried most of UMD's rushing chores. Rau, Dodge and sophomore Nick Minotte, Duluth, handled the passing, while junior Clyde Smith, Duluth, and freshman Dave Baker, Duluth, ranked second and third in pass receiving.

Open Now !!!
TOWN & COUNTRY
BARBER SHOP
 "NORTHWEST'S MOST
 MODERN SHOP"
T & C SHOPPING CENTER



Tale of Two Cities!

Among Western Hemisphere cities with the largest per capita enjoyment of Coca-Cola are, interestingly enough, sunny New Orleans and chilly Montreal. When we say, "Thirst Knows No Season," we've said a cheerful mouthful.

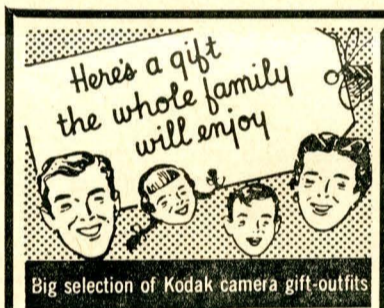
So don't take any lame excuses about its not being hot enough for Coca-Cola. Forget the temperature and drink up!



SIGN OF GOOD TASTE

Bottled under authority of The Coca-Cola Company by

COCA-COLA BOTTLING COMPANY OF MINNESOTA, INC.
DULUTH



Big selection of Kodak camera gift-outfits

See our complete line of
KODAK Flash
OUTFITS

There's everything needed for picture-taking fun in these handsome gift kits. Camera and film for sunny-day snaps, plus all the aids required for pictures around the clock, right around the calendar. Full selection of Kodak outfits for color slides and movies, too. Stop in soon.

REMEMBER

We Have A Complete
 Camera Rental Service.

DULUTH PHOTO
FINISHING SERVICE

28 North 3rd Ave. W.

Call RA 2-4697



SKI SWEATERS
 by Jersild

\$10⁹⁵

Authentically Norwegian Ski patterns with the look and touch of hand-knit. A fine Jacquard pattern in 100% virgin wool 4-ply yarn. Come in and see our many other smart patterns.

Matching Cap\$1.95

The BIG DULUTH

222 West Superior Street

Women's Athletics

By MARIETTA BROWER

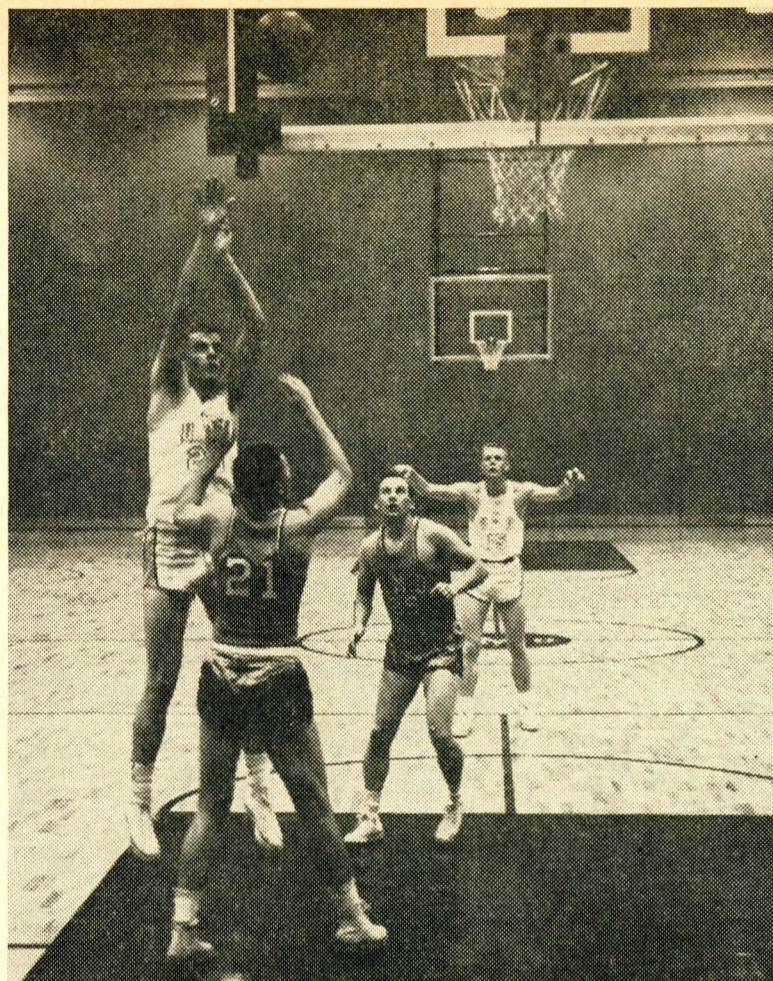
The annual Women's Athletic association Christmas party will be held at 6 p.m. Tuesday, Dec. 10, in room 135 of the Physical Education building. All girls on the campus are invited to attend the party which will include a pot luck supper and program. The deadline for signing up is Monday noon; the sign-up sheet in the women's locker room lists the items needed for the supper. Each person attending is also asked to bring a 25c gift. General chairman for the event is the newly elected freshman representative Doris Kyrola. Other committee heads are: food, Maija Klinson; recreation, Mickey Puglisi; decorations, Lolita Jegers; clean-up, Margaret Peterson. The party is put on by the freshmen WAA members.

A bowling tournament started yesterday at the Center Bowling alley, and will run Tuesday and Thursday of next week. Any-

one interested in joining may sign up in the women's locker room or contact a WAA member for details. Starting time is 3:30 p.m., and everyone is welcome to attend.

The volleyball tournament which was the main event this quarter concluded Tuesday night when Jan's Angels beat out VI's Rickey Ticks for the championship. Members of the winning team were: Jan Toms, Bea Lee, Lo Jegers, Nancy Peterson, Sigie Peterson and Sandy Knutson.

Two highlights tentatively planned for winter quarter are an invitational volleyball tournament set for Jan. 18 at St. Cloud State college and the annual UMD Sports day set for Jan. 25. The WAA members of Hibbing J. C., Superior State Teachers college and St. Scholastica will be invited to the Sports day. A drive for committee members will get underway at the beginning of winter quarter. Students interested in either of these events are urged to watch the bulletin board in the Phy Ed locker room for details.



FROSH ACE—Neil Wagner, lanky freshman from Duluth East, flips the ball towards the hoop. Waiting expectantly for the outcome are Dick Veech (25) of the alumni squad, Jon Sampson (15) of the varsity, and an unidentified alumns.

Intra-Squad Tilt Ends In Tie Game

Winger Elmer Schwartz slapped in a goal at 11:30 of the final period Monday night to give the Whites a 1-1 tie in the Bulldogs intra-squad game. Schwartz took the pass in front of the net from linemate Harvey Flaman, who was given the assist.

The Curling club audience of nine hundred persons witnessed a scoreless duel for the first two periods. Then the Golds broke the ice after thirty-four seconds of the third chapter. Al Peterson, a 1953-54 letterman, back from the armed forces, took a pass from Orest Wojcichowsky, freshman from Saskatoon, Saskatchewan, and beat freshman goaltender Jerry Snyder with a fifteen-foot shot into the corner.

Twenty-nine prospects saw action in the contest, which followed an open house given by the UMD hockey boosters association.

Look smart this weekend



Next to a sports car — **THE CAR COAT** is what every suburbanite wants

Designed originally for all-weather comfort in the little open-air cars, the Car-Coat has become a suburban classic for every outdoor moment — as perfect for wear around home as for a ski weekend! We have them in rich fabrics tailored to distinction — snug quilt linings to keep you warm in any storm. Prices start as low as

16⁹⁵ and up

TOGGLE COATS from \$18.95 and up.

FAMOUS CLOTHING COMPANY

12 East Superior St.

Are you interested in forming a flying club...?

Call us for further information.

LEARN TO FLY

STUDENT RATES

Call RA 7-6568

DULUTH AIR-WAYS, Inc.

Pepsi-Cola
refreshes without filling



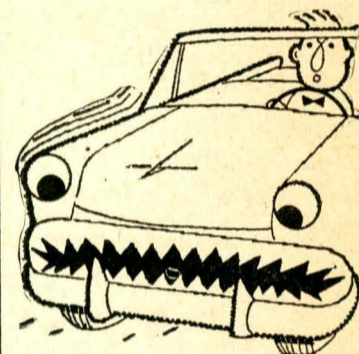
CITY BOTTLING
Duluth, Minnesota

FOOTBALL ROUNDUP

UMD SCORING	TD	EP	T
Heikkinen	3	0	18
Visina	2	0	12
Golberg	1	0	6
Baker	1	0	6
Smith	1	0	6
S. Johnson	1	0	6
Ferrera	1	0	6
Dodge	0	1	1
Jarvis	0	1	1

UMD RUSHING	Att.	Gain	Loss	Net
Heikkinen	172	234	30	204
Rau	52	221	25	196
Visina	43	193	7	186
Dodge	42	160	34	126
R. MacDonell	41	68	0	68
Salmi	10	41	0	41
Ferrera	22	83	6	77
S. Johnson	6	21	0	21
W. Johnson	3	14	0	14
J. MacDonell	2	6	0	6
Jarvis	1	2	0	2
Fontaine	3	5	8	-3
Minotte	2	0	13	-13
Cline	6	6	1	5

UMD PASSING	Att.	Comp.	Int.	Yds.
Rau	36	16	2	245
Dodge	60	22	9	230
Minotte	17	3	1	74
Fontaine	6	2	1	69
S. Johnson	1	1	0	37
Visina	5	1	1	8
MacDonnell	1	0	0	0



Driving a gas eater?

THEN SWITCH TO AN ENGLISH FORD

You'll be surprised how little gas it uses. Twelve models to choose from.

Duluth Chrysler-Plymouth

RA 4-8894 737 E. Sup. St.

THE SKI SHOP



AT THE

PLAZA SPORT SHOP

Complete Outfitters to Skiers Since 1954

This year — as always — the best the world has to offer is available first at the PLAZA SPORT SHOP!



PARKAS — Sizes to men's extra large. From	9⁹⁵	PANTS — Sizes to men's 40 long. From	12⁹⁵
CAPS — Machine-knit and hand-knit. Nylon slalom caps. Adults' from	2⁹⁵	MITTS — Poplin or nylon with leather palms. Sizes extra small to extra large. From	1⁹⁵
SWEATERS — Imported and domestic machine-knit. From	10⁹⁵	CHOPPERS — Single and double palms. Child's and adults', from	95^C
SOCKS — Made expressly for skiing. From	1²⁵	RACING GLOVES — from	8.95
		LINERS — from95c

NORSE HAND-KNIT SWEATERS from **27⁰⁰**

Achievement of expert knitters who work in farmsteads and cottages in the remote valleys of Norway. Their century-old tradition combined with up-to-date designs assures you of highest quality and workmanship.

LET US PROVE TO YOU THAT BECAUSE OF OUR ABILITY TO IMPORT, AND OUR EXPERIENCE IN SELECTING THE VERY BEST, WE ARE ABLE TO OFFER YOU THE FINEST.

RA 4-1080

Open 9 A.M. - 9 P.M.

1305 E. Superior St.

According to UMD policy, a final examination is to be given in all classes unless a written request is granted by the Divisional Chairman and approved by the Provost. No examination may be changed from position on the published schedule unless a written request is granted by the Divisional Chairman and approved by the Academic Dean. This request must be in Division Offices prior to noon, December 4, 1957.

EXAMINATION SCHEDULE
Common Examinations

Name of Course	Day	Hour	Room
Air Sci. 1, Sec. 1, 2, 3, 4	Wed., Dec. 18	8:00-10:00	ROTC 8
Air Sci. 2, Sec. 1, 2	Wed., Dec. 18	8:00-10:00	ROTC 8
Art 4, Sec. 1, 2, 3, 4	Fri., Dec. 13	12:00- 2:00	M 150 (Aud)
BE 1, All Sections	Mon., Dec. 16	12:00- 2:00	M 200, 207, 303, 307
BE 31, All Sections	Tues., Dec. 17	4:00- 6:00	M 200, 207
BE 41, All Sections	Tues., Dec. 17	2:00- 4:00	M 200, 207
BE 51, All Sections	Mon., Dec. 16	12:00- 2:00	M 209, 310
Cmeh. 6, Sec. 1, 2	Tues., Dec. 17	2:00- 4:00	S 200
Engr. Draw. 4, Sec. 1, 2, 3	Thurs., Dec. 19	10:00-12:00	SA 216
Eng. 4 Sec. 1, 5, 9 (Hoffman)	Sat., Dec. 14	10:00-12:00	M 150 (Aud)
Sec. 2, 7, 23 (Hart)	Sat., Dec. 14	10:00-12:00	M 150 (Aud)
Sec. 3 (Owens)	Sat., Dec. 14	10:00-12:00	M 150 (Aud)
Sec. 4, 11, 16, 24 (Davis)	Sat., Dec. 14	10:00-12:00	M 109
Sec. 8, 12, 20, 28 (Norris)	Sat., Dec. 14	10:00-12:00	S 200
Sec. 9, 15 (Sturgeon)	Sat., Dec. 14	10:00-12:00	S 200
Sec. 10, 29 (Levang)	Sat., Dec. 14	10:00-12:00	M 207
Sec. 14, 17 (Frogner)	Sat., Dec. 14	10:00-12:00	M 308
Sec. 18 (Click)	Sat., Dec. 14	10:00-12:00	M 303
Sec. 21 (Tezla)	Sat., Dec. 14	10:00-12:00	M 103
Sec. 22 (Tezla)	Sat., Dec. 14	10:00-12:00	M 107
Sec. 22, 26 (Duncan)	Sat., Dec. 14	10:00-12:00	M 201
Sec. 25 (Shepard)	Sat., Dec. 14	10:00-12:00	M 309
Geog. 12, Sec. 1, 2, 3, 4	Sat., Dec. 14	8:00-10:00	M 150 (Aud)
Be. Ed. 3, Sec. 1, 3, 4, 5	Thurs., Dec. 19	10:00-12:00	S 200
Hist. 20, Sec. 1, 2, 3, 4	Fri., Dec. 13	2:00- 4:00	M 150 (Aud)
Hist. 21, Sec. 1, 2	Fri., Dec. 13	2:00- 4:00	M 150 (Aud)
Hist. 22, Sec. 1, 2	Fri., Dec. 13	2:00- 4:00	M 150 (Aud)
H.E. 31, Sec. 1, 2	Wed., Dec. 18	8:00-10:00	M 310
Math. A, Sec. 1, 2, 3	Thurs., Dec. 19	8:00-10:00	S 200
Math. 1, Sec. 1, 2, 3, 4	Thurs., Dec. 19	7:00-10:00	S 200
Math. 6, Sec. 1, 2, 3, 4, 5, 6	Tues., Dec. 17	4:00- 7:00	S 200
Math. 50, Sec. 1, 2, 3	Tues., Dec. 17	4:00- 7:00	S 200
N. Sci. 7, Sec. 1, 2	Tues., Dec. 17	12:00- 2:00	S 200
N. Sci. 8, Sec. 1, 2	Tues., Dec. 17	12:00- 2:00	S 200
Phil. 1, Sec. 1, 2	Wed., Dec. 18	10:00-12:00	S 200
PEM. 1, Sec. 1, 2, 3, 6, 7	Fri., Dec. 13	4:00- 6:00	Gym. Balcony
PEM. 1, Sec. 4, 5, 9	Fri., Dec. 13	4:00- 6:00	Gym. Balcony
PEM 16C, Sec. 1, 4, 5	Fri., Dec. 13	4:00- 6:00	P.E. 165, 170
PEM 18A, Sec. 2, 3	Fri., Dec. 13	4:00- 6:00	P.E. 165, 170
PEM 18B, Sec. 1, 2	Fri., Dec. 13	4:00- 6:00	P.E. 165, 170
PEM 17A, Sec. 1, 2, 3	Fri., Dec. 13	4:00- 6:00	P.E. 165, 170
Pol. 1, Sec. 1, 2, 3, 4, 5	Wed., Dec. 18	4:00- 6:00	M 150 (Aud)
Psy. 5, Sec. 1, 3	Sat., Dec. 14	4:00- 6:00	S 200
Psy. 1, Sec. 2, 4	Sat., Dec. 14	4:00- 6:00	M 150 (Aud)
Spch. 1, Sec. 1, 2, 3, 4, 5, 6	Thurs., Dec. 19	12:00- 2:00	M 150 (Aud)
Spch. 2, Sec. 1, 2, 3	Thurs., Dec. 19	12:00- 2:00	M 150 (Aud)
Spch. 3, Sec. 1, 2	Thurs., Dec. 19	12:00- 2:00	M 150 (Aud)
Class Normally Meets	Exam Time	Day	
8:00 MWF, MTWThF	12:00- 2:00	Wed., Dec. 18	
8:00 TTh, TThS	2:00- 4:00	Wed., Dec. 18	
9:00 MWF, MTWThF	2:00- 4:00	Thurs., Dec. 19	
9:00 TTh, TThS	4:00- 6:00	Thurs., Dec. 19	
10:00 MWF, MTWThF	8:00-10:00	Fri., Dec. 13	
10:00 TTh, TThS	10:00-12:00	Fri., Dec. 13	
11:00 MWF, MTWThF	12:00- 2:00	Sat., Dec. 14	
11:00 TTh, TThS	2:00- 4:00	Sat., Dec. 14	
12:00 MWF, MTWThF	8:00-10:00	Mon., Dec. 16	
12:00 TTh, TThS	10:00-12:00	Mon., Dec. 16	
1:00 MWF, MTWThF	2:00- 4:00	Mon., Dec. 16	
1:00 TTh, TThS	4:00- 6:00	Mon., Dec. 16	
2:00 MWF, MTWThF	8:00-10:00	Tues., Dec. 17	
2:00 TTh, TThS	10:00-12:00	Tues., Dec. 17	
3:00 MWF, MTWThF	2:00- 4:00	Wed., Dec. 18	
3:00 TTh, TThS	12:00- 2:00	Wed., Dec. 18	

*IX and X period classes are to be held during the last regular class meeting period. Double period classes should use the first period in determining their examination time.

ROOMS. Examinations will be given in the regularly scheduled classroom unless instructors make other arrangements through the Office of Student Personnel Services. Lap boards, if used, are arranged for through Divisional Offices. **Please notify Division Offices of any changes to the examination schedule.**

LENGTH OF EXAMINATIONS. Examinations normally will not exceed two hours in length. The examination schedule, however, has been set up to permit running over this limit providing room arrangements for the run-over period are cleared through the Office of Student Personnel Services.

GRADE REPORTS. Class cards with grades recorded and signed by the instructor must be in the Admissions & Records section, O.S.P.S., Room 130, Kirby Student Center, Mon., Dec. 23, 1957, at 12 noon. Quarterly grade sheets and grade distribution reports which will be distributed, should be completed according to instructions on the sheets and handed in the O.S.P.S., 130 Kirby Student Center, with the class cards. Students who fail to report for examinations should be given an "F" in the course (subject to change by petition if approval is secured to take the examination later).

CONFLICTS. Conflicts should be reported to O.S.P.S. Students scheduled for more than two tests on any day may petition his instructor(s) to change the time of examinations(s) after certification and approval by Director of Student Personnel Services.

JUST ARRIVED !!
New Shipment • Complete Supply
SKIS - SKI BOOTS
HOCKEY & FIGURE SKATES
HOCKEY STICKS AND GEAR
-lowest prices in town-
TRI-STATES SPORTS
208 West Superior Street

FREE!

This coupon good for cleaning one
LADY'S SWEATER or MAN'S WOOL
SHIRT with any cleaning or laundry order at Yale's Town and Country Branch.

Name

Address

Good until December 31.

NOW
OPEN FOR BUSINESS

Present the above coupon at our new cash and carry branch with your laundry or dry cleaning and have a lady's sweater or man's wool shirt cleaned absolutely FREE — THIS MONTH ONLY.



In the Arcade
TOWN and COUNTRY
Shopping Center

CLEANERS
FURRIERS
LAUNDERERS

A new idea in smoking...

Salem refreshes your taste



Created by R. J. Reynolds Tobacco Company

- menthol fresh
- rich tobacco taste
- most modern filter

Salem adds a wholly new quality to smoking . . . refreshes your taste just as a sudden breeze on a warm Spring day refreshes you. Rich tobacco taste with a new surprise softness . . . menthol-fresh comfort . . . most modern filter, through which flows the freshest taste in cigarettes. Smoke refreshed . . . pack after pack . . . get a carton of Salems!

Take a Puff... It's Springtime

The UMD Statesman