

MINNESOTA
HISTORICAL
SOCIETY

CLA EPC, SCEP all for change in transcript system

By DIANE EGNER

Two influential University committees Tuesday called for a return to a single transcript system.

A 14-1 vote by the College of Liberal Arts (CLA) Educational Policy Committee (EPC) and a 5-3 vote by the University Senate Committee on Educational Policy (SCEP) may assure passage Feb. 3 of a motion before the Twin Cities Campus Assembly to abolish the present dual transcript system.

Of the four dissenting votes, three were cast by students. All the votes favoring the single system were those of faculty members or administrators.

CLA's backing of a return to the old system is probably significant, Nils Hasselmo, CLA associate dean, said. "In the long run, it ought to be for the students' benefits," he said.

At present, students have one transcript for general circulation and a more complete record for use only by students and their college offices.

The latter "operational" record shows all courses, including withdrawals and incompletes. The less complete transcript shows only final accomplishments and omits all Ws (Withdrawals), Is (Incompletes) and Ns (No Credits). This system began in 1972 when student records were computerized.

The dual transcript system poses problems for Minnesota students who try to transfer to graduate schools in other states, Hasselmo said.

"Students are almost always asked for operational transcripts," he said. "Minnesota is the only school in the Big 10 with the dual system."

Robert Brasted, chemistry department director, said he opposes the dual system because it penalizes the "good" student. He said most employers see only the less complete transcript. Thus, students who successfully complete every course they begin receive the same grade point average (GPA) as students who begin more courses than they complete but are able to hide Ws, Is and Ns, Brasted said.

The complete transcript is a prediction of how well students will function in the "outside world," he said. An employer ought to know if a student only completes a portion of what he or she starts, Brasted said.

However, student Kelly Dunn disagreed. "A good student won't be hurt by it (the dual system) because his operational record is the same," Dunn said.

The dual system has advantages for students who become ill or are forced to leave the University during the middle of the quarter, Dunn said.

"There are many good reasons for Ws," he said.

Dunn also is a member of the Twin Cities Student Assembly, which unofficially supports a return to the dual system. The CLA Student Intermediary Board also supports the dual system.

German professor Frank Hirschbach was the lone professor who opposed the SCEP motion.

Returning to the single transcript system would discourage students

from experimenting with courses outside their major fields, he said. Many students, especially honors students, take additional courses just to see if they have any interest in them and to "broaden their education," he said. Abolishing the dual system would effectively discourage them from experimenting, he said.

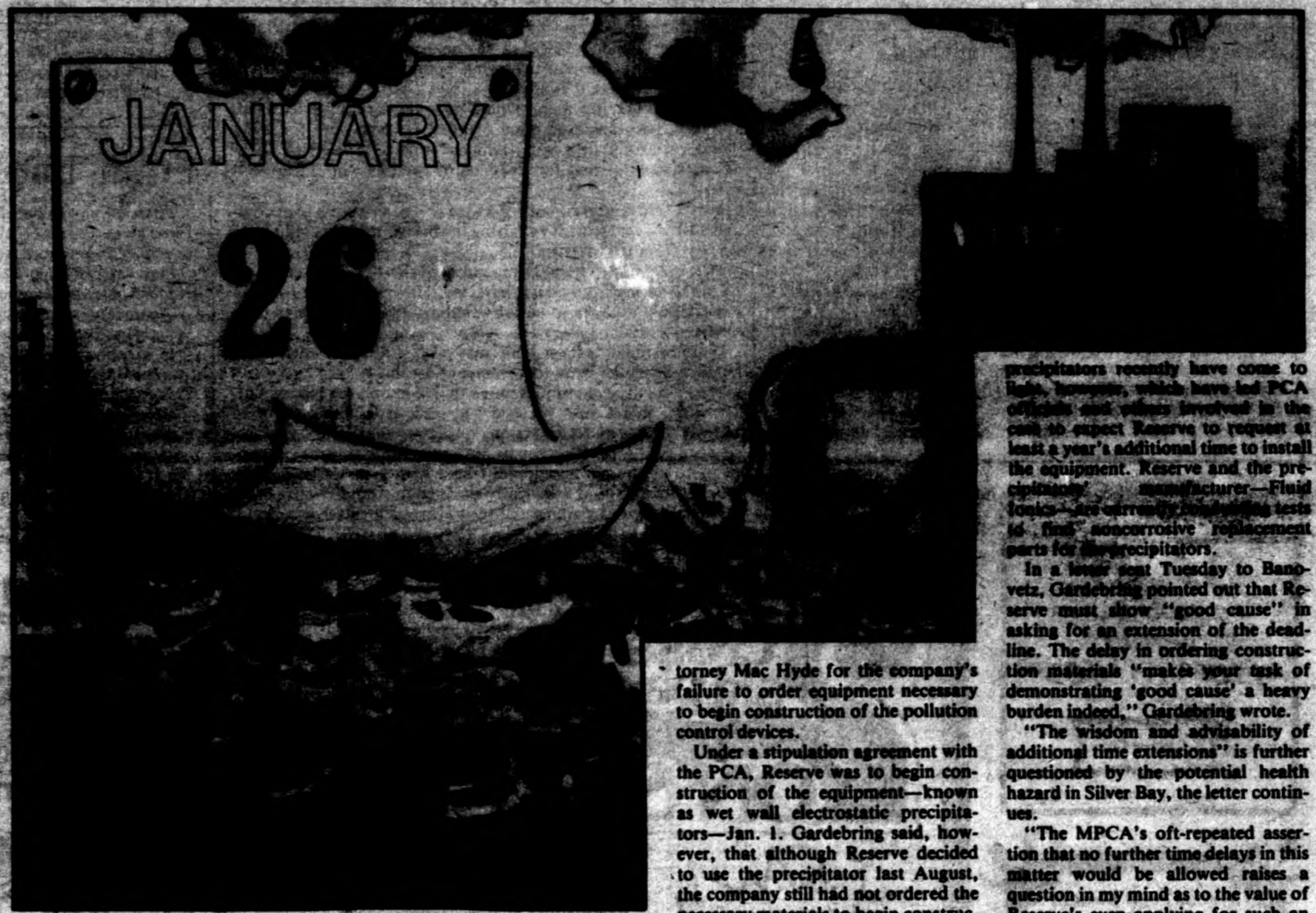
Braun and some students argued that the dual system has not been in effect long enough to have proven itself. But others disagreed.

The dual system was an experiment, CLA dean Frank Sorauf contended. "Five years has been long enough," he said. "I support the outcome (EPC decision)."

General College officials will meet today to decide which system to support. They were one of the main proponents of the dual system when it began in 1972; transcripts of General College students also have shown the most discrepancies.

"I really can't comment until I've heard what my divisional heads have to say," General College Dean Richard Bailey said Tuesday.

MN HISTORICAL SOC.
NEWSPAPER DIVISION
69 CEDAR ST
ST PAUL, MINN 55155



PCA official attacks Reserve regarding pollution control

By RICK MASON

Reserve Mining Co. came under fire Tuesday from a Minnesota Pollution Control Agency (PCA) official for lagging in the installation of air pollution control equipment.

The criticism, from PCA executive director Sandra Gardebring at the

PCA's citizen board meeting, came despite claims by Reserve spokesmen that current problems with the equipment have been handled expeditiously and are limited to maintenance difficulties.

Gardebring, however, lashed out at Matthew Banovetz, Reserve Executive Vice President, and Reserve at-

torney Mac Hyde for the company's failure to order equipment necessary to begin construction of the pollution control devices.

Under a stipulation agreement with the PCA, Reserve was to begin construction of the equipment—known as wet wall electrostatic precipitators—Jan. 1. Gardebring said, however, that although Reserve decided to use the precipitator last August, the company still had not ordered the necessary materials to begin construction.

Reserve does not expect to take bids for the precipitators' structural steel until spring, or begin construction until October. The stipulation agreement requires Reserve to have the equipment installed and operating by that time.

Severe corrosion problems in the

precipitators recently have come to light, however, which have led PCA officials and others involved in the case to expect Reserve to request at least a year's additional time to install the equipment. Reserve and the precipitator manufacturer—Fluid Ionics—were currently conducting tests to find noncorrosive replacement parts for the precipitators.

In a letter sent Tuesday to Banovetz, Gardebring pointed out that Reserve must show "good cause" in asking for an extension of the deadline. The delay in ordering construction materials "makes your task of demonstrating 'good cause' a heavy burden indeed," Gardebring wrote.

"The wisdom and advisability of additional time extensions" is further questioned by the potential health hazard in Silver Bay, the letter continues.

"The MPCA's oft-repeated assertion that no further time delays in this matter would be allowed raises a question in my mind as to the value of Reserve's even applying for such an additional time extension," according to Gardebring's letter.

Reserve should consider operating only those pelletizers with proper air pollution control equipment after the deadline, Gardebring suggests in the letter.

Reserve to 8

Groups scramble for funds from defunct FM plan

By M.J. SMETANKA

Student organizations already are scrambling for some of the \$39,000 in student fees that had been set aside for a student-run FM radio station. The Regents rejected the plan recently and the money apparently is up for grabs.

University Student Telecommunications Corporation (USTC), the organization that prepared and presented the FM proposal, wants part of the \$39,000 currently held in escrow to reimburse them for their expenses.

Ron McCoy, USTC executive director, said USTC spent \$32,000 on research, legal fees, clerical help, and opinion polls to promote the FM plan.

But WMMR, the student radio station that serves 4,500 students in Minneapolis campus dormitories, wants \$17,000 of the money.

"WMMR is all the radio they're going to get—however limited we are," Kerry Ashmore, WMMR general manager, said. "Our equipment is 15 years old, and we need new things badly."

McCoy, however, said the money should stay in escrow because it was collected specifically for the FM project, which he said is not necessarily dead.

"If the political climate changes or the Regents change, the FM proposal could come back in six or eight months," he said.

The USTC board of directors will decide today whether to attempt a revival of the FM proposal.

Although another FM project could stall release of the escrow money to WMMR or anyone else, such a move may be unnecessary, according to Jud McCarthy of the Student Activities Center.

There was "implicit consent and understanding," McCarthy said, that

USTC would be reimbursed for money spent on the defeated FM proposal.

The Board of Regents on Jan. 14 asked for routine review of USTC's costs before releasing the escrow money to them, he said.

Another solution to WMMR's money problems, McCoy suggested, would be to combine the radio station with USTC. "We'd be interested in seeing them acquire new equipment so they can fulfill their function as a training place," he said.

WMMR now operates on \$4,000 a year from the University's Department of Speech and Communication and limited advertising revenue, Ashmore said.

However, WMMR is reluctant to join USTC because of the unstable funding situation, Ashmore said.

"USTC is a bureaucratic funnel for the video center," he said. "WMMR is stronger alone. They'd own all our equipment and our funding would

have to go through their board. The short term financial gain isn't worth the risk."

Because USTC is a year-long operation and student fees are available only during the school year, USTC has borrowed money from the escrow fund the last two summers and paid it back gradually as student fees came in. However, USTC is not in debt, McCoy said.

But Ashmore is not convinced that "our money wouldn't become theirs."

WMMR asked for the \$17,000 in February, 1976, and the Student Services Fees Committee of the Twin Cities Student Assembly approved their request. But the administration vetoed the request.

If WMMR again asks for money, the fees committee's decision of last February would stand and only the administration would have to approve.

News Digest

Compiled from the Associated Press

International

Mexican leader sees role helping U.S.

Mexico City—President Jose Lopez Portillo of Mexico says he is willing to serve as a bridge-builder to help the United States improve its relations with the rest of Latin America.

"It would give me great pleasure to be a vehicle for harmony," he said in an interview with the Associated Press.

Portillo, who is scheduled to meet with President Carter in Washington next month, also indicated a willingness to assist the United States in resolving its disputes with Panama and Cuba.

Portillo was one of eight Latin American chiefs of state who last week urged the United States to reach a prompt solution of its dispute with Panama over the Panama Canal.

Portillo, who took office Dec. 1, said he attaches great importance for Mexico to his Washington visit. "For better or for worse the solution to many domestic problems passes through Washington," he added.

He described as "absolutely true" Carter's inaugural address remark that many of his decisions as president would inevitably affect millions of people in other countries.

Asked if the Cuban and Panamanian issues are part of his Washington agenda, the Mexican president said that the agenda has not yet been completed. He stresses that Mexico is in a position to act as a bridge between the United States and other Latin American nations.

"Nothing would please us more than to be useful to the purpose of improving relations between our Latin American brothers and North America," he said.

Striking workers protest killings

Madrid—Police arrested more than 60 persons Tuesday in an effort to stem rising political violence that has left six dead. But new disorders were feared as angry leftists took to the streets to demand vengeance for rightist violence.

More than 35,000 workers walked off their jobs in Madrid and some 30,000 struck the Barcelona SEAT plant, Spain's largest automobile factory, to protest the machine-gun killing of four Communists by gunman presumed to be right-wing extremists. Leftists in Madrid called for a general strike Wednesday.

Premier Adolfo Suarez called in top military and civilian cabinet members to discuss the violence, which included the country's second major political kidnapping in less than two months.

Police reportedly arrested 24 persons, including 19 foreigners, in the hunt for gunmen who burst into offices used by Communist labor lawyers Monday night. The killers shot four persons fatally and wounded five others. Newspaper funeral notices identified the dead as three lawyers and a worker, all members of the illegal Communist party.

Some 500 demonstrators protested outside the hospital where one of the lawyers died. Inside, 50 hospital employees struck to protest the killings.

National

Senate confirms Bell, 75-21

Washington—The Senate on Tuesday confirmed President Carter's nomination of Griffin Bell, an Atlanta lawyer and former federal judge, to be Attorney General. The vote was 75-21.

Carter's selection to head the Justice Department stirred more controversy than any of Carter's other Cabinet appointments and the Senate vote was preceded by more than six hours of at times acrimonious debate.

Republican opponents contended the Democratic majority was not applying the same standards to Bell that they would have had he been the nominee of a GOP president. Some of them also raised questions of "cronyism" because of Carter's long-time friendship with Bell.

But most of the debate over Bell centered around his civil rights record, an issue emphasized by blacks and liberal organizations who opposed his nomination. Carter has called Bell's civil rights record "superb."

Sen. Edward Brooke (R-Ma.) said six days of hearings by the Senate Judiciary Committee left "great gaps" in the record. He moved to send the nomination back to the committee for further hearings. The Senate rejected his motion by a vote of 70 to 25.

Earlier Brooke had clashed sharply with Sen. Birch Bayne, (D-In.) who led the floor fight for Bell's confirmation. The two liberal senators usually are allied on civil rights issues but this time were on opposite sides.

Carter bill offers large-scale tax rebate

Washington—President Carter's \$31 billion economic program may include a \$50 cash payment for nearly every American, including the non-taxpaying poor, Bert Lance, Carter's budget director, said Tuesday.

Lance said the payments would be in the form of a tax rebate for each personal exemption claimed by taxpayers for 1976. There also would be a cash payment for persons receiving Social Security benefits and for low-income persons who do not pay taxes.

Lance said Carter has also decided to ask Congress to encourage business investment by raising the investment tax credit to 12 percent from 10 percent.

However, some liberal Democrats and the AFL-CIO criticized Carter's emphasis and said they would try to shift the focus of the legislative package to job creation and minimize the tax relief.

Congressional leaders who met with Carter at the White House quoted the President as saying that his is "the best way" to stimulate the economy. Rep. John Brademas, the House majority whip, said Carter pledged "to meet Congress more than halfway" in the quest for action on his programs.

Lance told reporters it may not be possible to provide payments to all the poor, especially those with incomes below \$4,000, because it could cost nearly as much in administrative costs to reach them as the amount of the payments themselves.

The way Lance outlined the rebate plan, a family of four with an income of \$10,000 would receive a total tax rebate of about \$200. For a family of three, the rebate would total \$150.

Carter's total income stimulus program, which must be approved by Congress before it becomes effective, would be about \$31 billion, slightly larger than first proposed. About \$15.8 billion would be for 1977 and \$15.5 billion for 1978, Lance said.

In addition to tax rebates and help for business, Lance said the package will include the jobs programs and permanent tax reductions Carter proposed earlier. Carter is expected to disclose additional details in a message to Congress within the next two weeks.

Regional

Perpich hints settling of hospital case

St. Paul—Gov. Rudy Perpich hinted Tuesday he may seek to avoid a legal confrontation with U.S. District Judge Earl Larson over the operation of Cambridge State Hospital.

In several orders issued last year, Larson held that mentally retarded persons confined in Cambridge State Hospital have a right to the protection of the Constitution and the federal courts.

Larson ordered the state to spend money to provide more staff and better facilities, even though no funds had been appropriated for that purpose by the Minnesota Legislature. The case has been regarded as a major test of how far a federal court can go in directing the internal operations of a state government.

In his budget message, Perpich recommended the closing of Anoka and Hastings State Hospitals, saying that the money saved can be used in other institutions, "especially Cambridge."

In a later news conference, Perpich was asked to explain and told newsmen, "We'd like very much to get that out of the courts. I certainly wouldn't want to be governor of Minnesota and have a court tell me we're not staffing properly."

From bad to verse

After taking his one day vacation Elmo gives the same stale information.

"You can get more from me than you can from J.C.

And I'll give you a free consultation."

Weather wise it is quite repetitious.

What's in store for tonight is quite vicious.

15's high as we go minus 18's the low.

This can almost be rated pernicious.

Now the only thing left to explain is the question of why we remain by our own free volition.

Is it really ambition?

(Or possibly that we're not sane?)

SALE
Vested Suits
wools
\$115⁰⁰ to \$189⁰⁰

RI Johnson
DINKYTOWN

IF YOUR FIRST NAME IS
AMY
This ad, with I.D., entitles you to \$5 off regular retail price of any pair of jeans.
Expires 1/31/77

britches
1314 4th St. S.E.

ECUMENICAL MARRIAGE SEMINAR

Wednesday Even. from 7:30-9:30
Feb. 2, 9, 16 \$5.00 per couple

At St. Paul Campus Ministry
1407 N. Cleveland, St. Paul 55108
Call 645-4561

2 GREAT cross country ski packages ON SALE!

NORWEGIAN HICKORY W/ LIGNOSTONE
CHOICE OF 3 LEATHER BOOTS
CHOICE OF 4 BINDINGS
POLES - VALUE \$130.00
SALE \$75⁰⁰

FIBERGLASS PACKAGE
CHOICE OF 3 LEATHER BOOTS
CHOICE OF 4 BINDINGS
VALUE \$136.00
SALE \$90⁰⁰

FINAL CLEARANCE
35% off Toboggans
20% off Snow Shoes
20% off Wigwam Hats
20% off Gloves-Mittens

ALL PACKAGES INCLUDE MOUNTING & BASE PREP

LOWEST RENTAL RATES—\$7.00/WEEKEND

CAMPUS BIKEWAYS INC.
2407 UNIVERSITY AVENUE S.E.
PLENTY OF FREE PARKING IN OUR LOT ADJACENT TO STORE 331-3845

Hours:
8am-8:30pm M-F
8am-5pm Sat.
Noon-5pm Sun.

TELEVISION RENTALS OPTION TO BUY STEREO

REFRIGERATORS... from 7.95 mo. STEREOS... from 10.95 mo.
B/W TV... from 10.95 mo. TYPEWRITERS... from 10.95 mo.
COLOR TV... from 24.95 mo. TAPE RECORDERS... from 8.95 mo.

We also rent Freezers, Calculators & Misc.
RENT IT - IF YOU LIKE IT - BUY IT!

RenTertainment, Inc.
310-142, Ave. S.E. 338-2777
Dinkytown Open Even.

REFRIGERATOR TYPEWRITER

U Film Society

7:30, 9:15 Tonight
La Chienne
'Best Film of Year'

Bell Museum
7:30, 9:30 Fri., Sat.
False Movement

BACK AGAIN: 7:30, 9:30 p.m., tomorrow
Satyajit Ray's PATHER PANCHALI
one of the all-time great films; part I of 'Apu trilogy' (\$1.50 adm.)

minnesota daily

The Minnesota Daily is an independent student-written and student-managed newspaper for the Twin Cities campus of the University of Minnesota. Opinions expressed herein are not necessarily those of the student body, faculty or the University administration. Published daily, Monday through Friday, during the regular school year and

three times weekly through summer session by the Board of Student Publications, Leslie Schroeder, president.

Complaints concerning Daily coverage, after first being brought to the publication editors, may be referred to the University of Minnesota Press Council, 111 Murphy Hall, University of Minn., Minneapolis, MN. 55455 or phoned to Mike Maltzer, Press Council Chairman, 226-4193.

Main offices: 10 Murphy Hall, Minneapolis
Branch editorial office: 180 Coffey Hall, St. Paul.
News-editorial phones: (612) 373-3391 (Minneapolis), 373-0868 (St. Paul). Business phone: 373-3395 (subscriptions and classified advertising). Display advertising office: Room 348, 720 Washington Ave. SE, Minneapolis, MN. 55414, phone: (612) 378-5550.

Subscription rates (in advance): \$6 per quarter (90 issues), \$18 per year (180 issues). Second class postage paid at Minneapolis, Minn. and at Shakopee, Minnesota.

Editor: Linda Sanderson
Managing Editor: Eric Rieghman
Asst. Managing Editor: Addie Mattson
News Editor: Mark Fitzpatrick

Asst. News Editor: Kate McCarthy
Editorial Page Editor: Rick Mason
Opinions Editor: Bob Berg
Letters Editor: Jeff Stempel
Copy Editor: Colin Covert
Asst. Copy Editor: Tony Blanco
Photo Editor: Mark Peterson
Asst. Photo Editor: Mark M. Nelson
Art Director: Celso Junqueira
Asst. Art Director: Pam Jones
A&E Editor: Allen Robertson
Books Editor: Kerry Cork
Asst. Books Editor: Linda Anderson

Community Editor: Jeff Thomas
University Editor: Kathryn Kahler
Sports Editor: Tom Mason
Calendar Editor: Bruce Brandt
Training Director's: Sharon Meyer, Valerie Ohanjan

Wire Editor: Steve Voelker
Operations Manager: Darryl Tjeden
Adv. Manager: Cathy Cambal
Business Manager: Paul Quast
Asst. Bus. Manager: Pat Tarnowski
Office Manager: Frank Au

Perpich urges health science funds but freeze on teacher hiring at U

By TONY BIANCO

The budget Gov. Rudy Perpich recommended Tuesday to the Minnesota Legislature contained both unexpected good news and some not-so-expected bad news for the University.

Although Perpich proposed giving the University about \$18 million in state funds for health sciences research that it hadn't requested, he also told the legislature that the University, along with all other state colleges and universities, should not be given state money to hire additional teachers in 1977-79.

If Perpich's recommendations are approved, the University would receive funds in the upcoming biennium to hire 27 additional faculty, all of them in nonteaching jobs, and 76 additional civil service employees.

In anticipation of an enrollment increase of almost 5,000 students by 1978-9, University officials are requesting money for an additional 285 faculty and 268 additional civil service employees.

Following Perpich's budget announcement, University President C. Peter Magrath said that the University "will continue to seek additional faculty positions."

Magrath also said he was encouraged by parts of Perpich's recommendations, but that more study would be needed to determine its overall effect on the University.

Perpich told the legislature the University faculty currently is large enough to provide "adequate" instruction to students even if enrollment increases during 1977-79. If enrollments at the University—as well as other state colleges and universities—increase substantially, Perpich said, "they should be financed...through temporary (teaching) positions paid for by tuition from enrollment increases."

"We must educate increasing numbers of students in the near future," he said. "But we must also plan now for those years when size and staffing needs of Minnesota's public colleges and universities will decline."

State and University officials have predicted a general enrollment decline in the state's higher educational institutions after 1981.

Perpich recommended a total University appropriation of \$353 million of \$404 million requested for the 1977-79 biennium. That figure does not include money for faculty salary increases. Perpich will not make a recommendation regarding the University's \$37 million request for salary increase until the completion of faculty collective bargaining negotiations now underway.

As part of his program to improve the health of Minnesotans, Perpich proposed that \$14 million be appropriated for intensified research programs in blood vessel diseases, immunology and genetics, and neuro-sciences at the University. Another \$3 million would go to University dental research.

"All of these research areas have been identified through existing state special appropriations for medical research," Perpich said. "High funding can build on known talent, develop new strength in under-researched areas and capitalize on research opportunities temporarily supported by other sources."

Perpich also proposed that \$1 million be used to begin a state health sciences research center at the University. The center would provide health information to state agencies and planners to investigate and evaluate "preventive techniques to improve health," he said.

In another unexpected move, Perpich urged the legislature to consider incorporating Southwest State University at Marshall into the University of Minnesota system.

"The University of Minnesota has the state-wide programs to utilize the Marshall campus," Perpich said, "and we ought to make the strongest effort we can to preserve opportunity there."

Southwest State, currently part of the state university system, has been plagued in recent years by low enrollment. The Higher Education Coordinating Board (HECB) recommended last year that the school be maintained as part of the state system.

"We thought it was on the back burner," said Stanley Kegler, vice president for institutional planning and relations. "It's a complicated issue and it would be premature to comment on a possible University

position regarding Southwest State."

If Perpich's recommendations are adopted, tuitions for University students would increase an average of 13 percent in 1977-78 and an additional 5 percent the next year, according to David Berg, director of the University's management planning services office.

Tuitions in the state university and community college systems, on the other hand, would not increase at all. The funding requests submitted to the legislature by those systems are based on keeping tuition at current levels. However, the University request implies a 25 percent tuition hike.

"The governor in no case questioned the tuition assumptions" submitted by each of the three higher education systems, according to Dale Nelson, the department of finance's University liaison.

The University Board of Regents decided this summer to request an additional \$3.6 million for student financial aid rather than ask the legislature to reduce the University tuition increase contained in its funding request.

Perpich recommended Tuesday, however, that the University not be granted any of the additional financial aid money it requested. Instead, the scholarships and grants appropriation given HECB should be increased by \$16 million, Perpich said.

University students traditionally have received from 23-35 percent of HECB-administered financial aid, according to Berg.

Perpich also recommended adding \$5 million to the State Employment Youth Program to provide summer jobs for college students. "There should be more emphasis on work opportunities as a part of financial assistance," he said.

Other University special appropriations mentioned specifically Tuesday by Perpich include:

- \$550,000 a year for two years to replace federal graduate fellowship money no longer available;
- \$1,260,000 for new books and \$300,000 for an automation project for University libraries;
- \$8 million in contingency funds



Gov. Rudy Perpich

Photo by Virginia Padden

- for health sciences programs in the event that certain federal funds are reduced or eliminated;
- \$1,254,000 for the women's athletic department and an equal amount for the men's department (no funds had been requested for men's athletics);
- an unspecified amount for a diagnostic lab and teaching hospital for the College of Veterinary Medicine;
- \$3.6 million to complete the

- Duluth medical school; and
 - \$100,000 increase a year for two years for agricultural research (\$923,000 a year was requested).
- A Perpich aide said the governor will make recommendations to the legislature in about six weeks concerning the University's building construction request, which was submitted independently of the \$404 million request already reviewed by Perpich.

Perpich 'tight' budget asks government quality, not quantity

By TONY BROWN

Gov. Rudy Perpich offered a \$6.35-billion "tight" budget to the Minnesota Legislature Tuesday that proposes few new programs and asks for "quality" rather than "quantity" in state government.

Much of the request, in fact, dealt with scaling down the bureaucracy and tax changes over the course of the two-year budget.

As part of the plan to "eliminate, consolidate, or restructure various agency activities," Perpich would like to eliminate the state hospitals in Anoka and Hastings, merge some departments with others and reduce the number of state employees through attrition and firings.

His tax plans call for a simplification of the state tax form—a move Perpich claims will save taxpayers \$100 million—and a return of the projected \$183-million budget surplus through tax relief over the next two years. He does not recommend any increase in state taxes during the period.

"These proposals are not written in concrete," Perpich said. "We will want to make changes, and you will want to make changes, right up to the day you adjourn."

But some legislators began suggesting revisions immediately after the address. Senate Minority Leader Robert Ashbach (I-R, St. Paul) felt the more than \$1-billion raise from the last budget was too high.

"There is simply no reason for that much of an increase," he said. "We needed more positive things for jobs and details for education."

Still, most reactions from the Democratically controlled legislature were open-minded if not supportive. The Perpich budget is considered to reflect what many feel is a slowdown in major spending programs for the state.

"We're fine-tuning," said House Speaker Martin Sabo (DFL, Minneapolis). "It's not big or glamorous, but it's important. But we'll approach the budget with caution and I'm sure there will be changes."

Sen. Roger Moe (DFL-Ada), whose Senate finance committee will deal with the budget, said it was a "reasonable budget" that took "some courage" for the governor to render. But he too looks for some changes before the final draft is voted through by the House and Senate.

The basic breakdown of the tax dollar according to the proposed Perpich budget calls for:

- 36 percent for primary and secondary schools;
- 29 percent for property tax relief and aid for local government;
- holding the line on allocations for health, welfare and corrections at 15 percent;
- higher education to get the same 12 percent as in the last biennium; and
- the miscellaneous section to lose 1

percentage point, for a total of 8 percent.

Perpich defended the billion-dollar increase saying commitments to current programs and inflation made the addition necessary. The 21 percent increase over the next two years is the smallest in the last 10 years.

The governor said collecting procedures need revision. He proposed that the state income tax form be scaled down to a half page "short form" to reduce "confusion, frustration, or irritation" with the current booklets. In addition, he said the \$100 million he feels the state will save with this move could be used as permanent tax relief.

The tax relief from the \$183 million would aid school districts now in the throes of enrollment drops, higher per capita aid to cities, as well as eliminating the payroll tax for three-quarters of state businesses and removing the sales tax from newsprint.

But while the Perpich budget is trying to achieve some tax relief, it also attempts to save existing state funds by elimination, consolidation or restructuring of many agencies. An example is the proposal to merge the Consumer Protection Agency with the attorney general's office. This would leave that agency's director, Sherry Chenoweth, in a hazy status, although her position is not specifically cut.

The governor also wants to take a

hard look at either eliminating or restructuring 15 agencies or boards, including the Minnesota Education Computing Consortium, of which the University is a member.

All this can be managed, Perpich said, with more governmental evaluation and oversight.

"This section of the budget message emphasizes working together to improve government service," he said.

Another area that has interested Perpich in the past and was reflected at length in the budget is health care. The governor proposed pointed programs for three main areas: further research, aid to current care programs, and recreation.

Health research would be accelerated at the University and the Mayo Clinic as part of a \$20-million outlay over the next two years. This, Perpich said, would continue "a proud record" of medical advances in the state.

But in an attempt to "keep people away from the health repair establishment," the governor also proposed \$18 million for ski and hiking trail development as well as additional tennis courts in cities across the state.

"These trails and tennis courts can help us assure healthier lives for Minnesota for generations to come," Perpich said.

Perhaps the governor's most emotional remarks came when he spoke of the "employment situa-

tion. Although Minnesota's rate is below the national average, Perpich said the 85,000 people in the state who are looking for jobs need special help.

Generally, his program calls for funds to be pumped into housing, bridge replacement or recreational projects to create jobs outside government. He also hopes to have more training and placement for the unemployed.

These were in addition to the already functioning temporary public service jobs for depressed farm areas. Perpich said there are already 700 people in this program.

The most pressing problems for the governor so far have dealt with the environment and energy. The fuel oil shortage, Reserve Mining and the powerline dispute in central Minnesota are a few examples. Perpich said he would deal with these concerns in special policy statements in the near future.

But measures were announced for the continued funding of protection of the "esthetic environment" and \$26 million over the next two years for the control and replacement of elm trees and related diseases.

The governor also proposed allocations for the Minnesota Historical Society, the State arts board, public transportation—including the Metropolitan Transit Commission and the train between Minneapolis and Duluth—and a pay raise for state legislators and department heads.

City to ask state to approve building rehabilitation loans

By NEAL ST. ANTHONY

Next month, Minneapolis officials will ask the state legislature to approve a bevy of programs requiring state aid.

One of the city's priority items will be a commercial building rehabilitation loan program that proponents say will enable many small neighborhood businesses to stay alive.

The draft bill unanimously passed the City Council Intergovernmental Relations Committee Monday.

The proposed loan program is expected to be included in the city's legislative package, which the council will consider Friday.

The council wants the legislature to authorize the sale of \$10 million in general obligation bonds to finance a loan program to upgrade and preserve many deteriorating and under-used commercial buildings that dot the inner-city.

Many small business owners complain they can't make necessary improvements or expand their facilities due to high interest rates charged in the private mortgage market.

Generally, banks realize a greater profit by making loans on cars, boats and other durable goods at 12 to 14 percent interest. These loans are paid back within 36 months, said Bob Peterson, executive director of the Powderhorn Community Development Corporation. Peterson said banks shy away from long-term commercial rehabilitation loans.

Under the proposal, the city would be empowered to administer the program directly or may contract with a qualified public agency, like the Minneapolis Industrial Development Commission (MIDC), to provide the services.

Loans would be long-term—up to 20-year payback periods—at about 8 percent interest, although that figure has yet to be finalized.

The city would be protected from possible loss because:

- The anticipated sum of loan repayments, including interest and all fees and charges, must at all times be equal or greater than the amount of the outstanding loans;
- loan repayment time will not exceed 20 years;
- loans will be secured by a first or second mortgage on the property being renovated; and
- no loans will exceed the market value of the property after rehabilitation, less the principal balance of any prior mortgage existing on the property at the time the loan is made.

The draft bill was drawn up with several neighborhood commercial districts in mind—West Broadway, Lake St., East Hennepin Av., and Central Av.—but there are no specific areas named thus leaving the program open to any small businesses that wish to apply.

An informal council survey of small businesses in the West Broadway area showed that 90 percent needed some rehabilitation. In some central and south Minneapolis neighborhoods, up to 75 percent of the commercial buildings needed work, and in some stretches of Lake St., 80 percent required modification—in some cases just to meet the city building code.

A similar survey of area banks

showed they could not meet the loan needs of many businesses in their districts.

Gerry Sell, president of the Field-Regina Neighborhood Group in south Minneapolis, said she was concerned about small businesses in the 48th St. and Chicago Av. area.

"Banks are not willing to loan for rehabilitation of old property. If a loan is granted, its interest rate is between 9 and 12 percent," she said. "The landlord passes it on to the tenant in (higher) rent. The tenant must then charge the customer more. The neighborhood customer must go elsewhere to shop."

The ensuing dropoff in business forces closings, boarded-up buildings and adds to the economic and physical blight of the city, according to the proposal.

Stan Kehl, legislative liaison for the council, said the program would definitely be self-supporting. He said the interest rate on the loans would adequately cover interest payments to bond holders as well as the administrative costs of the program.

"The loan cannot exceed the equity of the building," Kehl said. "Most owners have substantial equity, they just don't have the necessary cash flow to make improvements."

The average loan needed is between \$15,000 and \$25,000, although some may range from \$50,000 to \$100,000 according to Kehl.

Louis DeMars, City Council president and member of the relations committee, said private capital must be "mobilized" to make the program successful. He advised Kehl to check with banks to determine if the program could be run in the same manner as the city's low-income home-loan improvement program.

Interest payments to holders of municipal general obligation bonds are tax-free. In the case of the home loan improvement program, banks have used city bond proceeds as collateral and lent a multiple of the amount. The banks, if the tax-free status applies, could realize as good a return rate as they would by making conventional loans at 12 percent.

"It's possible that the \$10-million pool could be leverage for up to \$30 or \$40 million in bank loans," Kehl said.

Walter Rockenstein (I-R, 11th Ward) asked if some of the money might be used to match loans from a Small Business Administration (SBA) program.

Kehl will investigate the private investment and SBA possibilities.

The legislature would determine who will qualify for a loan. (Supporters in the city say there are several eager members from the Hennepin County delegation willing to support the bill.)

"We may have a little problem determining who is large and who is small," said Peterson. "It's not always the amount of business you do. If the Standard Oil station on the corner is owned by the manager—it's small. If Standard Oil owns it—it's large."

Thomas Johnson (DFL, 2nd Ward) said the rehabilitation program is an alternative to past practices. In some cases, the city has bulldozed old buildings—leaving gaping holes in neighborhoods—in hopes of attracting new industry to build there.

2 GREAT DINNER SPECIALS Now at the Criterion

ALASKAN CRAB LEGS

Live Lobster DINNER 1 1/2 lb.

All You Can Eat for **\$6.95** per person

Includes Soup, Salad, Baked Potato and Popovers. Limited to groups of 8 or less.

Every Tuesday & Wednesday evening.

THURS., FRI. & SAT. SALAD, POTATO, POPOVER

COMPLETE **\$7.95**

Reservations required. Please indicate number in your party, desiring lobster.

CALL 227-6546

The Criterion
70 Years of Dining Tradition

Complete Dining, Banquet and Party Facilities
739 University Ave. (Lexington Exit at I-94) St. Paul, Minn., 55104

U Film Society
Jean Charles Tacchella's Voyage to Grand Tertiary
Intimately re-scheduled for 2:15 Thurs. and 7:30, 8:30 Monday night, BELL MUSEUM. Watch Daily for confirmation Thurs., Fri.
By the director COUSIN, COUSINE, this is supposed to be "better" than the later, better-known *Tomb Raider*.

SALE
Wool Shirts
\$15.00 to \$23.00

Al Johnson
DINKYTOWN

"BEST FILM OF THE YEAR"

BARRY LYNDON

This Weekend-Fri. 2:15 & Sat. 12 Two Shows 7 P.M. & 9:45 P.M. West Bank Area, 123

ARMY STUFF

G.I. Field Jackets from . . . \$8.99	G.I. Wool Pants . . . \$3.99-\$7.99
G.I. Army Boots . . . New \$18.99	G.I. Turtlenecks . . . \$4.99
G.I. Fatigues . . . \$3.99	G.I. Overcoats w/ Hat . . . \$8.99
G.I. Flight Pants . . . \$8.99-\$18.99	G.I. A.F. Parkas . . . \$38.99
G.I. Wool Shirts . . . \$4.99	G.I. Winter Boots . . . \$18.99
G.I. Ponchos • G.I. Sheepskin Pants • G.I. Essential Parkas & Mitts	

1000s of Gov't. Surplus Items

HARRIS WAREHOUSE
511 30th Ave. S.E. 331-1321
Univ. Ave. To 30th—Left 2 Blocks

Top Brands in Jeans, Snowshoes, Sox, Wool Sox, Packs, Down Jackets, Tents, Sleeping Bags, Canvas for Painting, Caps & Mitts

Who's doing what's doing what's doing what's doing

Every blessed day—somewhere in the Daily!

the classifieds
725-3385

INCREDIBLE WINTER SALE

NOW IN PROGRESS

Logos
book & store
1310 S.E. 4th Street
Between Dinkydale and Varsity

10-70% OFF EVERYTHING

SALE **SALE**

Funk & Rose
Everything reduced — save up to 50%.
Unique gift items, Bedspreads, Waterbeds, Leather goods

BIG AFTER CHRISTMAS SALE
The Funk & Rose store Near the U of M on the West Bank
212 15th Ave. So. (7 Corners) 336-7714



U graduates say luck, contacts important in finding employment

By STEVE KIRCHER
Second of three articles

You're out of college and looking through the newspaper ads for a job. There are plenty of restaurant positions, offers for management trainees and other positions that don't excite

the college graduate. But you can take heart knowing that only a small-fraction of graduates find their first job in the want ads, only 11 percent, according to the Minnesota Daily's survey of 1975 University of Minnesota grads.

The Daily surveyed 420 graduates last summer, a year after their graduation, to find out, among other things, how they searched for their positions. The grads overflowed with advice.

"If you want to work in a given area you have to be willing to fight or find ways of getting in through back doors. I also feel more internship programs should be available," offered one alumnus.

A graduate with philosophy and English majors said, "Yes, there are jobs out there, but finding them is tough. You've got to read the newspapers diligently for weeks to find leads. The best bet is to contact—in person—every company you can think of." He found a job as an advertising representative after search-

ing for a month. A political science major applied for one of the manager trainee positions he read about in the want ads and commented, "I believe my college education gave me some confidence and somewhat of an edge over others. The CLA (College of Liberal Arts) Placement Office seminars also gave me some idea of what to look for in a job interview."

The 1975 graduate spent an average of two-and-a-half months looking for a job. During that time, the graduate applied for an average of 13 jobs and was offered about two jobs.

But averages can be deceiving. One month after graduation, half of the 1975 grads had found employment, another quarter of them found jobs in two more months, although two percent of the 1975 class searched for more than a year.

About half of the 1975 alumni applied for six or fewer jobs, but a few souls, again about two percent, applied for over 100 jobs. Half of the 1975 class had one job offer and another quarter had two offers, with about one percent reporting an amazing eight or more job offers.

Of the grads holding jobs, 59 percent were working in the Twin Cities with 17 percent working in outstate Minnesota. About 13 percent left the Midwest to find employment. The figures are almost identical to the class of 1971, showing the tighter job market hasn't forced grads to leave the metropolitan area. Of course the Midwest has had a better job market than other sections of the country.

The old adage, "It's not what you know, but who you know that matters," is bound to go through the job seeker's head at least once, with good reason. Of all the job leads, friends and relatives were the most frequent. One of every five alumni found their job through friends or relatives.

Other common leads came from placement offices (16 percent), holding the job while in school (13 percent), personal visit to a company (11 percent), mailing out resumes (six percent) and employment agencies (six percent).

A journalism major with a B.A. said, "I looked very hard for a position in my field (broadcasting) but

felt I was hampered by long distance applications and the lack of 'five years previous experience' even in a smaller station.

"I got my present job after I had 'vacationed' for four months and then went back to looking. I honestly fell into this job. I was just in the building for an interview with another company. I visited my present employer because I saw the name on the lobby directory.

"I spent months looking for a desired job, yet never had any success. I really couldn't tell anyone what the secret to getting a job is. You either know someone or you are in the right place at the right time," she said.

Jobs obtained through resumes or the placement office were more likely to be satisfying and lucrative. Job leads provided by friends were perhaps a source of last resort or convenience because the leads led to positions that usually paid less and were not related to the job seeker's intentions. An employment agency, personal visits to a firm and want ads were also likely to provide a job unrelated to the graduate's intentions.

Often a temporary job held while going to school or during the summer can open up into a full-time job after graduation, some graduates reported.

"I quit school after my junior year because I got sick of it. I found a full-time technical job which gave me valuable experience," said a chemistry major with a B.S. He is now an associate engineer with a St. Paul company. "Experience is at least as important as the degree in making it easier to find a good job," he said.

A job seeker's preparation shouldn't be one-sided, that is, completely trying to sell his or her talents to the employer, but should also focus on whether the job will be satisfactory.

One alumnus advised, "Make sure that a person is completely sold on the job. Take an actual look at working conditions and surrounding communities for living conditions." With a baccalaureate in mechanical engineering, he left the frigid Upper Midwest for balmy California.

College major has little relationship with how long the graduate looks for a job. Business, education, engineer-

ing and social science majors all look just as long and apply for just as many or just as few jobs. The sole exception is health majors, who searched about half as long as everyone else, on the average.

Those few individuals who applied for 100 jobs or more had very little in common. They included one M.B.A., a forestry major with a B.S., and a journalism graduate with a M.A.

Alumni who applied for 20 jobs or more shared only one trait—they tended to hunt for a job longer than anyone else, usually around six months. They shared no other characteristics, not greater or lesser job satisfaction, nor salary, nor major field of study.

Extensive analysis of the survey data also found no significant relationship between sex or age and the length of job hunt or number of offers. Also, the number of jobs applied for and the length of time spent hunting for the job did not lead necessarily to better pay or greater satisfaction.

It may seem obvious that salary and job satisfaction go hand in hand, but it's only partly true. Those making under \$2,000 a year were distinctly less satisfied with their jobs than other alumni, but once the \$8,000 mark was passed, satisfaction with the job bore no significant correlation with salary.

Job hunting is that necessary transition between 16 to 18 years of school and that first career job. It's an experience that is largely unpredictable. Sex, age, college majors all have little relationship with the methods of the hunt. No doubt a lot of it is luck.

"For the most part I was in the right place at the right time," said an alumna with a B.S. in microbiology, who is now a research technician in Rochester. "The job is excellent, the people are great. I feel lucky. Most beginning jobs are going to be bad news, but most employers are looking for experienced people and even though the first job may be depressing, it will inevitably lead to the better job you missed because of that lack of experience."

TOMORROW: The value of the college degree.

Survey Facts:

- 78 percent response rate.
- Survey results are within six percentage points of the results that would be obtained if every graduate was polled.
- 420 Class of 1975; bachelor and master degree recipients were interviewed by mail in summer of 1976, one year after graduation.
- Computer processing was supervised by John Fung, Minnesota Daily electronic data processing manager.



Gray's
CAMPUS DRUG

"We're more than just a drug store!"

328 14th Ave. S.E.
Dinkytown, U.S.A.
331-2955

MOST ITEMS ALSO AVAILABLE AT
1413 E. FRANKLIN 671-9427

PRICES GOOD THROUGH JAN. 29
SOME ITEMS LIMITED IN QUANTITY

<p>REG. \$9. MEAD TYPING CORRECTION FLUID 66¢</p> <p><small>LIMIT TWO WITH COUPON. GOOD THROUGH JAN. 29</small></p>	<p>PLASTIC COATED PLAYING CARDS ASSORTED DESIGNS, REG. \$9</p> <p>3 for 99¢</p> <p><small>LIMIT 3 WITH COUPON. GOOD THROUGH JAN. 29</small></p>	<p>REVLON'S FLEX BALSAM & PROTEIN CREME RINSE 12 oz., Reg. \$1.99, Reg. or Extra Body</p> <p>\$1.09</p> <p><small>LIMIT TWO WITH COUPON. GOOD THROUGH JAN. 29</small></p>	<p>REG. \$1.95, CLAIROL HERBAL ESSENCE SHAMPOO 8 oz., for normal to dry or oily hair</p> <p>\$1.18</p> <p><small>LIMIT TWO WITH COUPON. GOOD THROUGH JAN. 29</small></p>
<p>REG. \$1.75, MEAD TYPING CORRECTION FLUID 66¢</p> <p><small>LIMIT TWO WITH COUPON. GOOD THROUGH JAN. 29</small></p>	<p>3 TIER, WALNUT PLANTER STAND Metal shelves, Reg. \$8.95, supply limited</p> <p>\$6.49</p> <p><small>LIMIT ONE WITH COUPON. GOOD THROUGH JAN. 29</small></p>	<p>VASELINE INTENSIVE CARE LOTION 10 oz., Reg. \$1.99</p> <p>99¢</p> <p><small>LIMIT TWO WITH COUPON. GOOD THROUGH JAN. 29</small></p>	<p>NATURE MADE SOLUBLE VITAMIN E 400 I.U., 100's, Reg. \$7.95</p> <p>\$2.99</p> <p><small>LIMIT TWO WITH COUPON. GOOD THROUGH JAN. 29</small></p>
<p>MEAD ERASABLE BOND TYPING PAPER 20 lb., 100 sheets, Reg. \$1.99</p> <p>\$1.38</p> <p><small>LIMIT TWO WITH COUPON. GOOD THROUGH JAN. 29</small></p>	<p>3 TIER, WALNUT PLANTER STAND Metal shelves, Reg. \$8.95, supply limited</p> <p>\$6.49</p> <p><small>LIMIT ONE WITH COUPON. GOOD THROUGH JAN. 29</small></p>	<p>VISINE EYE DROPS TAKES THE RED OUT 5 oz., Reg. \$1.75</p> <p>\$1.08</p> <p><small>LIMIT TWO WITH COUPON. GOOD THROUGH JAN. 29</small></p>	<p>CLEARASIL MEDICATED CLEANSER For acne or oily skin 2 oz., Reg. 99¢</p> <p>66¢</p> <p><small>LIMIT TWO WITH COUPON. GOOD THROUGH JAN. 29</small></p>
<p>WILKINSON SWORD BLADES DOUBLE EDGE, 5's, Reg. \$1.02</p> <p>77¢</p> <p><small>LIMIT TWO WITH COUPON. GOOD THROUGH JAN. 29</small></p>	<p>HAND PAINTED BAMBOO WALL HANGINGS Made in China, 12" X 36", Reg. \$2.25</p> <p>\$1.44</p> <p><small>LIMIT TWO WITH COUPON. GOOD THROUGH JAN. 29</small></p>	<p>WOOLITE COLD WATER WASH 8 oz., Reg. \$1.10</p> <p>79¢</p> <p><small>LIMIT TWO WITH COUPON. GOOD THROUGH JAN. 29</small></p>	<p>CLAIROL FINAL NET Non-aerosol hair spray 8 oz., Reg. \$2.45, scented only</p> <p>\$1.18</p> <p><small>LIMIT TWO WITH COUPON. GOOD THROUGH JAN. 29</small></p>
<p>Reg. \$1.79, REXALL BALSAM HAIR CONDITIONER After shampoo treatment, restores proteins, helps split ends</p> <p>99¢</p> <p><small>LIMIT TWO WITH COUPON. GOOD THROUGH JAN. 29</small></p>	<p>BAN ROLL ON ANTIPERSPIRANT 1 1/2 oz., scented or unscented, Reg. \$1.60</p> <p>97¢</p> <p><small>LIMIT TWO WITH COUPON. GOOD THROUGH JAN. 29</small></p>	<p>PEPSODENT TOOTH PASTE 8.5 oz., 30¢ off label, \$1.44 size</p> <p>78¢</p> <p><small>LIMIT TWO WITH COUPON. GOOD THROUGH JAN. 29</small></p>	<p>VICK'S DAY CARE DAYTIME COLDS MEDICINE 8 oz., Reg. \$1.89</p> <p>\$1.33</p> <p><small>LIMIT TWO WITH COUPON. GOOD THROUGH JAN. 29</small></p>

Regimenting veterans

The Veteran's Administration (VA) scored a victory last week when it settled with the University on a plan for monitoring veterans' classroom attendance. Unfortunately, the loser—the University—was negotiating not for itself but for more than 4,000 veterans who now will be forced to endure even stricter educational requirements than the ones imposed on them last year. The monitoring system, accepted by the VA after months of disagreement with the University, requires instructors to identify veterans on class lists and continue to watch and report their attendance throughout the quarter.

Not only has the VA succeeded in unfairly laying the cost and responsibility for enforcing its unreasonable rules on the shoulders of the University, but now instructors have become responsible for the VA's regulations. The VA pays the University \$11,000 each year for certifying veterans, while the University spends \$20,000 on this job. Enforcement of recently enacted additional regulations costs the University \$40,000, and the new attendance monitoring rules will require another \$35,000 a year. All this adds up to an enormous waste of money to appease the VA's insatiable quest for a few veterans who may be misusing the taxpayers' money.

Of course the VA has a right and responsibility to ensure that federal money is spent wisely, and veterans should expect some regulations accompanying their checks. But the federal government has not deemed it necessary to impose similar attendance restrictions on students receiving federally insured students' loans or other kinds of federal aid. There certainly has been enough publicity about misuse of student loans to suggest a possible analogy between them and veteran's benefits, but the federal government has chosen to single out veterans for its ridiculously stringent guidelines.

Veterans already have paid their dues to the federal government in many ways. To insist that they attend class regularly, complete 12 credits each quarter and deny them any probationary period is going a bit too far. The University is placed in the precarious position of either following VA orders so most veterans can continue to receive federal aid or refuse to implement the strict standards for veterans and lose its accreditation with the VA. It made the only decision it could have, given the ultimatum placed on it by the VA—enforce the guidelines or we won't give you any money. However, the only other recourse—a lawsuit against the VA—should have been given further consideration before the University decided as it did.

Pay to the last drop

The convergence of forces that have led to recent coffee price

increases were explained by reporter H.J. Maidenberg recently in the New York Times. The blame—if that is the appropriate word—lies not with secret cartels or greedy speculators, but with basic economic forces. The price of coffee has increased as the market's natural mechanism of balancing supply and demand. It's that simple.

Coffee supplies have been depleted by two major forces. Many farmers in Brazil, which is to coffee as Saudi Arabia is to petroleum, switched to growing soybeans in the early 1970s. Coffee prices were low then and a U.S. export embargo had driven up soybean prices on world markets, making soybeans the more profitable crop. Then, in 1975, a severe frost destroyed two-thirds of Brazil's coffee bushes. The war in Angola and economic problems in Uganda further aggravated what had become a sudden, severe shortage at prevailing prices.

During the same period, world demand for coffee grew. People in Europe and Japan in particular began drinking more as their incomes increased. Although U.S. coffee consumption has decreased steadily since the 1950s, that trend has been more than offset by growing demand in the rest of the world. As the people of other countries have achieved North American levels of prosperity, they have begun to compete with U.S. consumers for dwindling world coffee supplies. The result: higher prices.

Naturally, many North Americans resent the sudden increase in coffee prices. But their anger should be tempered by the knowledge that prices still would have increased, albeit more slowly, had the 1975 frost not hit Brazil. Coffee prices can be brought down only by increasing the supply or decreasing demand, the latter of which is the goal of the "coffee boycott." Whether some North Americans' drinking less coffee will offset the rest of the world's drinking more (although still, on a per capita basis, less than one-fourth the amount we consume) is questionable. Demand in other countries could slacken as a result of high prices, but North Americans certainly are in no position to urge others to drink less coffee. And to urge producing nations to increase coffee supplies at the expense of needed food crops would be morally abhorrent.

As Lester R. Brown, president of Worldwatch Institute, explained it to the Times: "The incredible rises in coffee and cocoa prices are merely another way of telling us that the four billion souls on this planet must compete for a steadily shrinking supply of farm produce. Our seas are being fished beyond capacity. Hardly any productive crop land is idle anywhere, and increases in one crop must be at the expense of another. The elasticity of supply is gone."

In such a scheme of things, coffee definitely is a luxury good. It's time Americans began thinking of it—and paying for it—as such.

letters

Critiquel

Each quarter, University students find themselves paying a student service fee. This money is divided among 16 funds, one of which is student aid. This is the equivalent of some students carrying the added burden of paying for those who received aid. There seems to be something ethically wrong about this.

Also, a portion of this fee (paid by all students) goes to Student Video Access, which is actually used by a small minority of students. The dollar here and the dollar there adds up to \$51.50. Since \$51.50 is a critical amount to most students, perhaps the Regents should give this fee a more critical look.

Billy M. Hargis
CLA

Token-cheap

One of the many blatant examples of the Daily's sexist journalism is its treatment of University athletic events. The staff finds it necessary to qualify with gender any sport whose participants are women. Are we then to assume that the term "athletics" speaks only of men and that women's participation in athletics is unusual and requires qualification of the term?

It seems the Daily subscribes to the University administration's assumption that varsity teams which warrant recognition and funding are in fact men's varsity teams. In giving women's athletics only occasional token coverage on the sports page,



"WE'RE QUITTING THE PEACE TALKS AND CALLING THEIR BLUFF, LADS. . . HARK! HEAR THE OPPOSITION CRASHING TO IT'S KNEES RIGHT NOW!"

the Daily is being just as discriminating as the advertising at Williams Arena. The arena's billboard announces men's athletic events each day while ignoring women's athletic events except in rare, selective, again token instances. Perhaps the Daily should alter its practices in order to treat its financial supporters and readers with at least a small degree of justice.

Julia Berger
Chris Paulos
CLA sophomores
Ruth Martinson
CLA junior
and 47 others

Roads to ruin

I have one thought after reading the article on drunk driving problems (Daily, Jan. 14). Most every bar has a parking lot for cars. Obviously, people drive to the bar to drink. Just as obviously, these people will also drive home when they leave the bar.

Perhaps there is a very simple solution: remove all parking lots from around a drinking establishment. Zoning and liquor licensing could be structured so bars are put within neighborhoods and are within walking distance for the neighborhood res-

ident. Driving to bars should be discouraged in every way possible.

Marcia Melgaard
CLA sophomore

Letters Policy

The Daily welcomes expressions of all viewpoints from readers. Letters should be kept as brief as possible and are subject to condensation. They must include signature, valid mailing address and telephone number and the writer's year in school or occupation. Because of the volume of mail received, unpublished individual letters cannot be acknowledged. If you have any questions regarding letters to the editor, call the Daily at 975-8738 or stop in at 11 Murphy Hall, University of Minnesota, Minneapolis, Mn., 55455.



Private industry conducting DNA research in secret

By JEREMY RIFKIN

Copyright 1977, Pacific News Service

Recombinant DNA research—the controversial technique to create new forms of life—is quietly spreading from academia, where it has been vocally debated and at least partially regulated, into the research and development laboratories of American business.

There the research is being conducted in an atmosphere of almost airtight secrecy, which, according to *Medical World News*, is “reminiscent of the atmosphere surrounding biological-warfare research a few years ago.”

The technique involves fastening together DNA segments (the basic material determining the hereditary characteristics of life) from different organisms. Critics contend that such experimentation poses immense health and safety problems, deep moral and ethical questions, and is being conducted almost entirely free of government supervision.

“As of now, there is no federal agency that is looking at research being done by private industry in recombinant DNA,” said Dr. Bernard Talbot of the National Institute of Health (NIH), the agency charged with overseeing the federal government’s new Interagency Committee on recombinant DNA. “We have no registry (of companies involved in this field.)”

But according to many high-level government, scientific and industry sources, seven major U.S. pharmaceutical companies are now or will soon be conducting recombinant DNA research: Miles Laboratories, Eli Lilly & Co., Hoffman-LaRoche, the Upjohn Co., Merck, Sharpe & Dohme Research Laboratories, Pfizer, Inc. and Abbott Laboratories.

They are expected to apply for patents on the new forms of life they develop.

Nine other corporations involved in drugs, chemicals and agricultural products are investigating potential applications of recombinant DNA: Cetus Corp., CIBA-Geigy Corp., DuPont, Dow, W.R. Grace and Co., Monsanto, French Laboratories, Wyeth Laboratories and Searle Laboratories.

Spokesmen for the seven pharmaceutical companies, while not denying outright their involvement in recombinant DNA research, are reluctant to

acknowledge it.

Tom Craig, public relations representative for Abbott Laboratories, said his firm has no intention of informing the general public about Abbott’s activities in the field, “because

that person receives the biological materials. While the NIH has drawn up guidelines for government-funded recombinant DNA research, it has no power to enforce them.

that person receives the biological materials.

While the NIH has drawn up guidelines for government-funded recombinant DNA research, it has no power to enforce them.

that would be privy to such information.

The guidelines drawn up by the NIH call for laboratory air to be kept under low pressure and researchers to take showers. Certain experiments are required to be done with weakened strains of bacteria that theoretically could not survive outside the laboratory.

Laboratories are not required, however, to be in remote areas. The NIH’s own maximum security DNA research facility, for instance, is a mobile trailer parked off a side street outside the agency’s office in Bethesda, Md., a residential Washington, D.C., suburb. It is protected only by a seven-foot cyclone fence.

Sinsheimer believes the government guidelines are insufficient. “I cannot believe that under these proposed guidelines the organisms can be contained,” he recently wrote the NIH, referring to new strains of virus that could be produced during experimentation. The consequences, he says, “are highly predictable and likely highly dangerous.”

Now, the federal government’s Interagency Committee—set up last fall to “review federal policy on the conduct of research involving the creation of new forms of life”—is preparing new recommendations for safety, regulatory and patent procedures on recombinant DNA research. Its report probably won’t be made public for several weeks.

Sources inside the committee suggest it is more likely to call for strictly voluntary controls and industry self-policing than tough new government-enforced regulations. And there are no indications the committee plans even to raise the issue of whether private companies should be able to create and market new forms of life.

“Such research ‘involves many unknown factors beyond the control of the scientist,’ scientist Liebe Cavalieri contends. ‘The probability of creating a dangerous genetic agent in the process is real, and there is no way to test for the danger.’”

it’s often difficult to obtain an understanding of what is being done. It creates more alarm than is justified.”

Officials of most of the six other companies refused comment.

Under existing NIH guidelines for university DNA research, scientists must disclose all their plans in advance. (Two universities, Stanford and the University of California, have applied for patents on their DNA recombination processes.)

But there are no such guidelines for private industry, and industry leaders say they would find them unacceptable. “If you disclose your research plans, you lose your right to patent,” explained Dr. Jerome Birnbaum, director of Merck, Sharpe & Dohme Laboratories.

A survey of public officials in four cities where private recombinant DNA experimentation is now being conducted—Rochester, N.Y.; Kalamazoo, Mi.; South Bend, In.; and Nutley, N.J.—revealed that none were aware of such research.

Kalamazoo mayor Francis Hamilton pointed out, for example, that while the Upjohn Laboratory was “within three blocks of where I’m sitting,” he had not been informed by the company of its work on recombinant DNA.

While most scientists agree that recombinant DNA is one of the most important scientific breakthroughs in modern history, they vociferously disagree as to whether the potential benefits of even the most restricted experimentation outweigh the grave potential dangers to human life and the environment.

Paul Berg, a prominent recombi-

lizer. Or it could lead to cheap and efficient production of vitamins, antibiotics and hormones and a new form of medicine—gene therapy—to treat crippling genetic diseases.

On the other hand, scientists like Liebe Cavalieri of the Sloan-Kettering Institute for Cancer Research are deeply concerned that a new “Andromeda”-type virus for which there is no known immunization might accidentally be developed and spread a deadly epidemic across the planet—or that a new, highly resistant plant might be developed that could wipe out all other vegetation and animal life in its path.

They argue for a complete moratorium on recombinant DNA research until its long-range implications can be resolved. (Microbiologists in more than 180 laboratories across the country are currently conducting DNA research under \$20 million in government grants.)

Such research “involves many unknown factors beyond the control of the scientist,” Cavalieri contends. “The probability of creating a dangerous genetic agent in the process is real, and there is no way to test for the danger.”

“The invention and introduction of new self-reproducing life forms may well be irreversible,” warns Dr. Robert Sinsheimer, chairman of the Biology Division of the California Institute of Technology.

Yet virtually any amateur biologist can today obtain the enzymes necessary to experiment with new life forms. Miles Laboratory, which markets the enzymes, admits that most of its enzymes sales are done through the mail. It says there are no “guarantees of what the customer will do” once

The Center for Disease Control, the Food and Drug Administration (FDA), the Patent Office and the Environmental Protection Agency have piecemeal regulatory powers, but no government agency has overall authority over DNA experimentation. And the agencies have no direct access to the commercial laboratories’ research programs as they do to government-funded university research.

When Dr. Robert Elder of the FDA was asked if his agency would be informed if, for example, test animals in a commercial lab began dying mysteriously from unknown diseases after being injected with a new recombinant DNA-type drug, he said, “there would be no requirement that (the company) inform us.” And, he added, he knew of no other agencies

Opinion Policy

The Minnesota Daily Opinion page seeks to provide a forum for readers and to facilitate public discussion of contemporary issues. The Daily is willing to publish the opinions of its readers regardless of whether the opinions are in agreement with the stated editorial positions of the paper.

If you wish to submit an article, contact the Daily at 373-9738 or visit the office at 10 Murphy Hall on the East Bank campus. Authors should obtain a copy of “Guidelines for Opinion Articles” before making submissions.

Articles which are clearly written and include some basis of fact to support the opinion will be given priority consideration. The Daily reserves the right to reject poorly written articles and to edit for length.

Individuals who believe they have been criticized in an Opinion article have the right of reply.

Jeremy Rifkin is director of the People’s Business Commission, a Washington, D.C.-based organization that researches new developments among American corporations.

Reserve from 1

Both Reserve and PCA attorneys were criticized at the meeting for not bringing the pelletizer problems to the court's attention in the recent Lake County Appeals Court trial over an acceptable on-land disposal site for Reserve's taconite wastes.

Reserve's Hyde said the corrosion was not relevant to the trial because it is a temporary problem that will not affect the precipitators' ultimate collection efficiency.

Aiden Lind, representing the Save Lake Superior Association, asked why PCA attorneys didn't introduce the information in court.

The PCA's chief attorney in the trial, Eldon Kaul, said he did not learn about the precipitator problems until after the trial's record was closed. "We didn't feel that it had any major impact on the merits of the case," he added.

Banovetz and Hyde also denied there was any attempt by Reserve to delay reporting the problems to the PCA. According to a PCA internal memo, Reserve first discovered the corrosion problems in early September. Reserve apparently did not inform the PCA until Banovetz sent a Nov. 15 letter to Peter Gove, former PCA executive director.

A later, December letter from Banovetz to Gove, however, also apparently indicated Reserve knew about the problem in September.

"Three months after the decision to install the wet precipitators, we discovered that the stainless steel cages in the two test units were deteriorating rapidly. . . The following week, it was determined that the condition of the cages was so bad that further operation was impossible," according to the letter.

The two test units were installed in June, leading to the supposition that the corrosion discovery occurred in September—three months later.

Hyde had another explanation,

With several months of winter ahead and severe cold snaps inhibiting outdoor activity, it would behoove students and faculty alike to recognize signs of approaching insanity.

It is no secret that the University is a hotbed of nervous tension. Look around you. Someone somewhere is manifesting behavior that is distinctive of advanced civilization. After all, primitive man did not have the jitters.

Are you a nail-biter? Common as nail-biting is, psychiatrists still aren't sure of the unconscious meaning behind it. They say the habit arises from childhood conflicts. That this form of self-mutilation may lead to insanity is not mentioned in the literature, but I have a hunch that it does. Look closer as you nip the tips. Soon you'll have nowhere to go. You may go crazy.

More irksome than nail-biting is the habit of desk-drumming. In a large lecture hall, the cumulative effect of a host of desk-drummers is sufficient in decibels to drown out a professor of history. If you listen closely, you might detect a rhythmic beat. If the beat becomes syncopated, rest assured that you are witnessing the onset of insanity.

Finger-snapping, of course, is related to desk-drumming, although it rarely occurs in the classroom. In the hallway, yes, but rarely in the classroom. The same holds true of knuckle-cracking. But knuckle-cracking differs from finger-snapping in that it can lead to calcium deposits. Both, however, can lead to insanity if practiced without pause.

Pen-clicking is also associated with the above practices, but occurs almost exclusively in the classroom. Neurotics, or students, are particularly susceptible to the habit of pen-clicking. Fortunately the advent of felt-tipped pens has cut down markedly on the racket formerly produced by the insidious ball-point. Even so, there are enough pen-clickers around to make things difficult for the student absorbed in thought. Every now and then one of them goes batty.

A habit which is falling out of fashion, but which is occasionally in evi-

however. The test units were installed in June, he said, but it was not until August that Reserve decided to use the precipitators throughout its pelletizing plant.

"The corrosion problem first became known to Reserve's technical personnel on the 26th of October," Hyde said. The PCA was subsequent-

ly informed on Nov. 15, he said.

"I defy one to read that letter and come up with that interpretation," Lind said. "The most I can give is that it's perhaps questionable what he (Banovetz) meant."

Lind added that even if Reserve hadn't known about the corrosion

dence in the libraries and lounges is foot-wagging. A foot-wagger usually sits with one leg crossed over the other; the free foot bobs and wags spasmodically, or, if there is music, in time with the beat. Psychologists tell us that foot-waggers are not unknown to suffer acute attacks while walking or bowling. Hence the high incidence of severe ankle sprain among them. But, according to the literature, they are at small risk of becoming deranged.

Hair-fiddlers are a common breed around campus. Their activity can be tolerated better than desk-drumming and knuckle-cracking because it is practiced quietly. But it has problems of its own. For instance, when a student goes to fiddle with his hair in class he is often thought to be raising his hand and is called upon forthwith. If he is caught completely off guard, the shock may send him into a catatonia, according to the literature.

Another form of self-injury besides nail-biting is neurotic excoriation, in colloquial terms just plain skin-picking. The individual seems impelled to pick and dig at his skin with his finger nail, apparently in an uncontrollable desire to relieve itching or rid the skin of what he believes to be a parasite. It may lead to all-out assaults on various parts of his body, leaving considerable scar tissue.

Lip-biting is an offshoot of the preceding affliction and, by chance, an activity that I'm presently engaged in. One has to be extremely delicate here, for the lips serve many functions, one of which requires that they remain cosmetically suitable on a moment's notice. Hence I strive to limit my nipping to three days a week, evenly spaced.

Well, why not? You might as well know everything. I have a wide assortment of nervous disorders that keep my body occupied while my mind struggles to create. I have a tic in my neck and my left shoulder is jerking violently. My right foot is knocking against the typewriter table. I twist to and fro in my swivel chair, wheezing and grimacing as the specter of a deadline transforms a humble scrivener into a bundle of twitching ganglia.

I have not misled anyone."

until late October, there were still three weeks in the trial for someone to introduce the information.

"The staff, myself and anyone else have nothing to cover up in this matter," Kaul said.

"We (Reserve) have not been dragging our feet," Banovetz asserted. "I can come here in good conscience that

Gardebring requested, and Hyde agreed for Reserve, that any application for a time extension to install the precipitators would reach the PCA by Feb. 7. If such a request is made, the PCA's citizen board is likely to consider it at its Feb. 22 regular meeting.



Nervous habits

SALE
Rugger
Knits
\$8⁰⁰ to \$13⁰⁰

RI Johnson
DINKYTOWN

**The Cellar
is Coming!**

SALE!
CAMPUS COBBLER
Dinkytown

TODAY
American Film Theatre
CMU Theatre/Lecture Hall
7:30 P.M.

Tickets: \$1.50 U of M/\$2.00 others
Discussion: Prof. Lowry, German Dept.
contemporary arts
cupc
coffman union
program council

**Save over 40%
on Maxell Tape**

The best cassette for music that's ever been available. . . Now at the best savings for you!

	Retail	2M Price		Retail	2M Price
UDC 90 Ultra Dynamic	5.30	3.15	UD35-90 Reel 1800' (Ultra)	Retail \$9.35	2M Price \$5.30
NEW UDXL-I-90 Cassette *	4.60	2.85	UD35-180 10 1/2" Reel (Ultra) 3600'	Retail \$25.00	2M Price \$14.55
UDXL-I-90 Cassette	6.50	3.75	LN35-90 Reel 1800'	Retail \$8.00	2M Price \$4.65
UDXL-II-90 Cassette	4.60	2.85			
UDXL-II-90 Cassette	6.50	3.75			

Call for lowest prices on all brand name audio equipment

And now you can buy the best of Nortronics recorder care products at Dealer Prices!
Example: QM202 Pro Head Demagnetizer List Price \$17.60 - Dealer and 2M Price \$11.70

2M COMPANY
MAX MILLER
8100 Penn Ave. So. - Suite 103 - Mpls. 554-8825
Open Mon.-Friday 10:30-12:30 & 2-4:30 Saturday 10-1



PURE MUDDY

Presenting "Hard Again," an album filled with the sound and spirit that have made Muddy Waters one of the giants of music. Produced lovingly by Johnny Winter and featuring James Cotton on harp, Johnny on guitar and members of Muddy's and James' bands. And including the first new Muddy Waters originals in years.

"Hard Again." That great Muddy Waters sound is back on Blue Sky Records and Tapes.

**MUDDY WATERS
HARD AGAIN**
featuring
Johnny Winter and James Cotton on all tracks
Includes:
The Blues Had A Baby And They Married It
Rock And Roll (#2)
Deep Down In Florida/Mannah Bay
Bus Driver/Crossroad Cat

Distributed by CBS Records

Available at:

Positively 4th Street 805 4th St. S.E.	Aura Sounds 1501 University Ave. S.E.	MSA TOO!
Discount Records 323 14th Ave. S.E. 7101 France Ave. S.	Electric Fetus 4th & Franklin	Ground Floor
Music Factory 807 Washington Ave. S.E.	All Wax Museums	Coffman Union



Photos by Dean Hanson

U naturalist collects weather, nature, animal lore



By JANE HOUSTON

This year's hard winter came as a real surprise to Jim Gilbert, a naturalist at Lowry Nature Center. After examining the coats of woolly bear caterpillars and finding wide center markings he predicted a warmer Minnesota winter.

"A wide center band is believed to foretell a warm winter. Nine years in a row it worked. This year it didn't," Gilbert admitted.

"It shows us that folklore isn't always true," he said. "What I try to do is find parts of folklore that may be true."

Some folklore, he finds, is not credible. For instance, many people believe animals, especially grey squirrels, grow thick coats before a rough winter, predicting abnormal cold.

But Gilbert says animals grow thick pelts after they've enjoyed a plentiful summer harvest. "Squirrels do the best they can," he said. "Some years have better nut seasons than others."

Gilbert collects lore about weather, nature and animals. It fits in well with his environmental education work at the nature center, where three days a week he hosts busloads of inquisitive schoolchildren, feeds and monitors local wildlife and assists graduate students in research.

He peppers his nature walks with anecdotes, explaining why certain folklore may be true or false. He leads children in Indian games such as tug-of-war or "snake shooting", a sport where a colorfully-painted wooden rod is thrown for distance.

"People are always interested in those old sayings and customs," he said, adding that he hopes they will become interested in plants and animals as well.

Gilbert also leads nature walks at the University's arboretum in Chaska.

Because the nature center prints its hiking schedules months ahead of time, Gilbert must predict the dates spring wildflowers will bloom and fall colors will peak.

He's not often incorrect. Since age eight, Gilbert has kept daily logs of



Jim Gilbert

nature's doings. Entries read, "First monarch butterflies sighted." (They migrate north from Mexico every spring.) or "First morels" (a morel is a variety of edible mushroom).

As he strides over the snow-packed paths of the nature center, Gilbert notices everything. He can tell deer have been browsing by observing the nipped bud-tips. "There's a squirrel refrigerator," he says, pointing to a hole in the snow where a squirrel had dug out nuts stored last summer.

He crouches to examine some miniscule black dots on the snow more thoroughly.

"See this dot here? It's actually a bug. Yesterday when it was 36 above, these dots were all over the place," he explains.

When the temperature warms to the forties and fifties, these insects, called snow fleas, swarm all over the snow and sometimes give a whole hill-

side a dark tint.

Gilbert, one of the few people in the world who has studied snow fleas, says, "They're not related to anything about folklore because nobody knows anything about them."

He points out a pussy willow, incredibly fuzzy-tipped for late January. "This is a sign of spring," he says. "Yesterday forced out the buds. It was our January thaw."

Certain birds considered harbingers of spring have been sighted this month, according to Gilbert. "Jan. 1, I heard the white-breasted nuthatch singing its spring song," he said. "And I heard of a horned-lark sighting."

Groundhog Day is another folklore item connected with spring. According to an American legend, the groundhog will retreat into his hole for another six weeks of hibernation if he sees his shadow. Gilbert and

most other naturalists agree there is not even a kernel of truth in that legend.

"In like a lion, out like a lamb," the folk saying referring to the month of March, is correct half the time, according to Gilbert.

When the wind is in the east
Then the sap will run the least.
When the wind is from the west
Then the sap will run the best.

This Vermont saying is part of maple syrup lore. Gilbert explains that sap flows when the nights are freezing and the days are thawing. Since such a phenomenon occurs almost always during a west wind in the northeastern United States, the saying is true.

Another saying with sound weather-sense behind it is:
Red skies toward night
Sailor's delight.
Red skies in morning

Sailors take warning.

"We see the setting sun through air that will reach us tomorrow, as pressure patterns of atmosphere move from west to east," Gilbert explains. "If the setting sun shines through dry air, the sky is reddest and if it shines through moist air, the sky is grey or yellowish."

Another weather predictor Gilbert has found to be true is that flies bite before a rain.

"Insects do cling more during moist weather, as flying is more difficult," he notes. "And heat causes human sweating, which makes you a more appetizing target. These two reasons, plus a release of more body odor when the atmospheric pressure is low, will add up to the rule that insects are more bothersome just before a rain."

Gilbert also has found an explanation of why we say, "It's raining cats and dogs."

According to a book on weather lore, this is believed to be a German mispronunciation of "cats and ducks." The Pennsylvania German people used to say, "It is raining to keep in cats and bring out the ducks."

"I prefer to collect folklore that people have heard, not items from books," he said. The founder of the Minnesota Phenological Society, he writes articles on nature as well as folk beliefs for various journals.

However, he has time to research animal life and lore only at hours when schoolchildren from Twin Cities schools are not visiting the nature center.

On the snowy trail where he is pointing out a sumac plant whose berries can be made into tea if properly strained, Gilbert explains he has to get back to the building to meet 60 fourth graders who are coming for a field trip.

Half an hour later, inside the center's large basement hall, he's lecturing to the energetic bunch, while holding up a jar of brown pellets.

"These are deer droppings, known as 'deer scat.' Perhaps you'll want to collect some on our hike today...."

ly
to
or
all
be
is
the
the
in
to
the
it
an
ere,
ain
nip-
ort-
ind
king
it to
ead-
d Hyde
applica-
install the
PCA by
made, the
to con-
necting.
cum
it's
O-
nter
in
lem-
ands.
ars.
ck on
es.
© 1977 CBS INC.

Family housing, small businesses emphasized in SE citizens' plan

By STAN THEIS

In an attempt to develop a true residential community, Southeast Minneapolis residents are working on a plan that emphasizes family housing, small business and efficient—not heavy—traffic flow.

Members of Southeast Minneapolis Planning and Coordinating Committee (SEMPACC) have completed a draft of citizen views, expressed at six fall meetings, to be considered in formulating a comprehensive community plan.

Citizens contributing to the draft said they want the burden of student housing to be shifted from the community to the University, and want to emphasize owner-occupied housing.

The city should encourage spot housing renewal by providing tax incentives, instruction and maintenance assistance, according to the draft.

Some citizens say they feel new student housing should be built to satisfy the demand placed on single-family housing. Others say they feel housing stock should be developed that is sufficient to serve the needs of a significant number of students and staff.

To help retain small businesses, citizens suggested that the Eastgate commercial area be developed into a community shopping center. Convenience shopping and cooperatives also should be encouraged in neighborhoods, they said.

Dinkytown should be enhanced as a student center. No central service facility like Southdale should be developed in the area, citizens said.

They also said they want to reduce industrial pollution and feel further industrial development should be discouraged.

By changing the functional classification of 4th St. SE and Franklin Av. from "minor arterial" to "local street," citizens said they hope to discourage heavy traffic flow through the area.

Bus service should be improved and promoted with some incentive for those who ride buses, the citizens said.

Residents propose to connect East River Road and Main Street, provide access north from 15th Av. and Washington Av., and extend the Dartmouth interchange to Washing-

ton Av.

The railyards should be used for mass transit and remote parking, citizens said, with the guarantee of on-street parking for residents and assurance that local institutions would provide adequate parking without removing additional housing.

Citizens also would encourage bicycle and pedestrian traffic. They recommended that bicycle paths be constructed separately from streets and that a mall be developed in the Stadium Village area.

More adult recreation areas—such as swimming pools and tennis courts—are needed, as are park and playground areas for children, the draft states.

Residents asked that public access to the river be increased and that all river shore be open space.

This can be achieved if the river road is constructed to maximize open space and to allow parking along the entire road instead of in parking bays only, citizens said.

Last fall's six public meetings were the first steps toward drafting a comprehensive community plan for the Como, Prospect Park-Motley, University and Riverside neighborhoods.

The plan is to be completed in May or June and then presented to the city, according to Neil Anderson, a city planner who is helping SEMPACC write the plan.

"A comprehensive plan will keep us from being cut up. Southeast is in the middle of so many different forces, a plan can hold us together," said Gail Gendler, SEMPACC president.

"It is a guideline for us to work with, to give us some continuity for the future," Gendler said.

SALE

Sport Jackets
tweeds

'81 to '114



DINKYTOWN

A career in law—without law school.

What can you do with only a bachelor's degree?

Now there is a way to bridge the gap between an undergraduate education and a challenging, responsible career. The Lawyer's Assistant is able to do work traditionally done by lawyers.

Three months of intensive training can give you the skills—the courses are taught by lawyers. You choose one of the seven courses offered—choose the city in which you want to work.

Since 1970, The Institute for Paralegal Training has placed more than 1600 graduates in law firms, banks, and corporations in over 75 cities.

If you are a senior of high academic standing and are interested in a career as a Lawyer's Assistant, we'd like to meet you.

Contact your placement office for an interview with our representative.

College of Liberal Arts Placement office

MONDAY, FEBRUARY 14

THURSDAY, FEBRUARY 17

FRIDAY, FEBRUARY 18

The Institute for
Paralegal Training

235 South 17th Street, Philadelphia, Pennsylvania 19103
(215) 732-6600

Operated by Para-Legal, Inc.

A Fun Place FOR A ONE-DAY JAUNT!

We've been thinking about you quilters and those who would like to learn . . . hope you will come visit us and see our inspiring collection of tiny Calico Prints in pure Cotton and Cotton Blends and all the things we've gathered under one roof . . .

- A LARGE DISPLAY OF QUILTS
- QUILTED THINGS
- QUILTING CLASSES

- QUILTING BOOKS AND PATTERNS
- QUILT BATTING
- PATCHWORK PATTERNS

- QUILTING FRAMES & HOOPS

. . . . Just to mention a few of the goodies you'll find. We'd love to see your projects, so please bring them along when you come—display them if you like!!!



The Cotton Shoppe

6509 Nicollet S.
Richfield • 866-2430

Store Hours
Mon.-Thurs. 9:30-9:00
Fri. & Sat. 9:30-5:30

Park All Day For Only 40¢

AT THE U OF M COMO AVE.
PARK AND RIDE PARKING COMPLEX
(located at 29th and Como Avenues)

FEATURING...

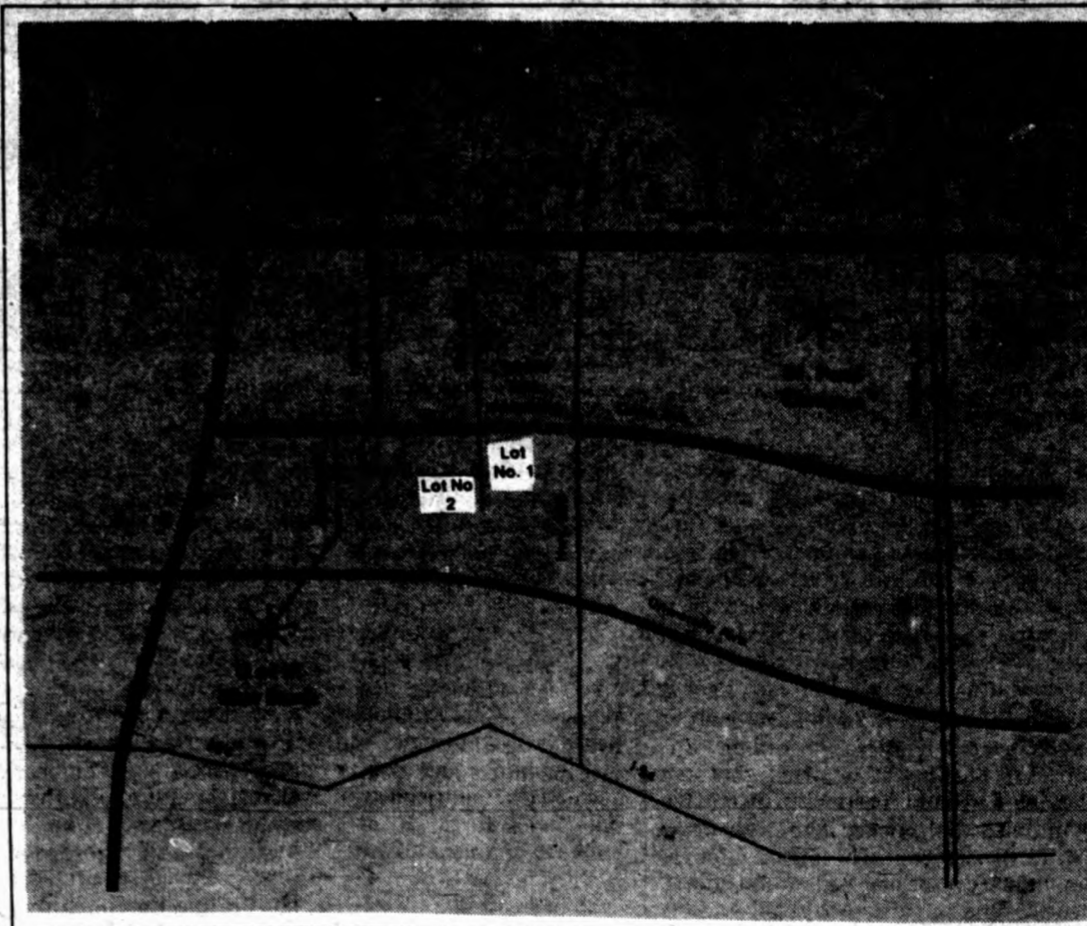
- 2 spacious parking lots - almost 700 parking places!
- Lowest parking rates near the Mpls. campus!
- Space usually available ALL day!
- Easy access - no major traffic congestion!
- 5 minute bus service to the heart of the East Bank, West Bank, and St. Paul campus!
- A large shelter at the parking lot bus stop with several waiting benches, telephone service, and a Minnesota Daily distribution box!

HOW IT WORKS:

1. Park your car FREE in either of the 2 spacious parking lots.
2. Pay a 20¢ fare to ride the campus buses from the parking complex to the Mpls. or St. Paul campus (40¢ per round trip).
3. Relax, unwind, and read the Minnesota Daily on the short bus ride to either campus.

* To avoid change problems, bus fare cards offering 20 rides for \$4.00 can be purchased at any "U" Bursar or Cashier office.

COMO AVE. PARKING COMPLEX



FURTHER INFORMATION IS AVAILABLE AT THE U OF M TRANSIT SERVICES OFFICE,
2818 COMO AVE. S.E. (across the street from the Como Ave. Parking Complex)
373-0374

Complement



Photos by Larry Falk



Photo by Annie Griffiths



COFFEE

The Social Beverage

By KATHRYN KAHLER

Unmistakably, coffee is an American cultural phenomenon. It is consumed more often than any other beverage, except water, and the ritual surrounding its consumption is often synonymous with conversation.

Coffee is not entirely a social drink; we sometimes drink it alone. It is probably the only drink which is acceptable in almost any social situation. Asking someone to "have a beer" holds some of the same social connotations, but beer is sometimes inappropriate.

Both the discovery of coffee and its social overtones are shrouded by myth and obscurity. According to Goodman and Gilman's *The Pharmacological Basis of Therapeutics*, legend links its discovery to a prior of an Arabian convent. Shepherds reported that the goats, having eaten the berries of the coffee plant, gambled and frisked about all night long instead of sleeping. The prior, mindful of the long nights of prayer he had to endure, instructed the shepherds to pick the berries so that he could make the beverage from them. The success of his experiment was indicated by the fierce opposition aroused in the more orthodox priests against this devotional antisoporific. The popularity of coffee today

also shows the experiment's impact.

Many cultures have rituals centered around food. The breaking of bread symbolizes getting to know someone and sharing in someone's life.

But more than defining interactions among Americans in terms of general friendship and conversation, coffee drinking carries with it rather defined sex role connotations.

It's often considered a more masculine than feminine drink, associated with the workplace and with sociability. Tea drinkers, on the other hand, are usually thought to be passive and female.

"It always used to amaze me," anthropology instructor Riv-Ellen Prell-Foldes said. "Whenever I would go into a restaurant with my husband, he would order tea and I would order coffee. But the waitress would always give me the tea and him the coffee."

Coffee's significance in American culture dates back to the struggle for independence from the tea-drinking British.

Most historians agree that the Boston Tea Party symbolized our potable independence from Great Britain. Coffee became a decidedly American drink, brewed by the pot. Tea was and still is brewed by the single cup. In Britain, the situation is reversed.

Trade agreements and colonization efforts in Latin America were significant factors in the ascendancy of coffee to its present cultural throne. Unlike the British, who established outposts in tea-producing countries, America guaranteed itself a steady flow of coffee through colonization to the south.

Coffee's popularity and continued supply have been perpetuated by the absence of U.S. tariffs on what is sometimes called the "heavenly brew." Since Hawaii is the only state that produces any coffee, the U.S. has had no domestic interests to protect.

Last year, Americans consumed nearly three billion pounds of coffee, with Colombia, Brazil and Mexico supplying most of the green beans. That averages out to about nine pounds of coffee for each person, compared with only one pound of tea.

Since coffee is a taboo drink for children, it is obvious that American coffee drinkers consume the brew at a seemingly alarming rate. American culture is psychologically addicted to coffee.

Now, however, that addiction is threatened by the astronomical price rises coffee has experienced and possible shortages similar to the oil producing nations' cartel. Since July, 1975, the price of coffee has risen 250 percent, and the curtain is still going up.

Americans must decide whether to pay the price, or switch to another drink. Tea, for example, contains an equal amount of caffeine as coffee and can be drunk in exactly the same ways—hot or cold and with cream or sugar—for a lot less money.

Bob McGarvey, owner of Minneapolis' only coffee-roasting firm, contends the boycott on coffee will have no effect on prices. And he doesn't think coffee consumption will drop significantly.

In fact, he is considering expansion of his coffee empire to include gourmet coffee. Americans suddenly have become interested and discriminating in the wines they drink, learning the nuances of various grapes. McGarvey thinks the same thing will happen with coffee, and he seems prepared to gamble even in this time of rising prices.

To the agricultural economist coffee, like a number of other staples, has a somewhat elastic demand. Since the price has doubled this year, statisticians should expect coffee consumption to drop by about one quarter. Whether or not it will remain to be seen.

But one thing is certain. Forcing Americans to forsake their coffee habit for tea or cola beverages would require an enormous change in our cultural mores and social relationships.

Complement

Making Coffee: Roast and Grind

By KATHRYN KAHLER

Twelve cups outlined the circumference of the stained round table. Meticulously placed trays of green and roasted coffee beans backed each cup while a miniature coffee tree stood at the center of the table. An antique brass spittoon rested between two chairs.

Picking up a handful of roasted beans from one of the trays, a rather conventional-looking businessman deposits them in a small grinder, carefully weighing out five grams of the ground coffee for the tasting cup. The remaining grounds are thrown away. He repeats the process for each tray of roasted coffee beans; prudently grinding, measuring, and filling each cup while a brass kettle filled with water heats nearby.

As the water boils, the businessman fills each cup, spinning the tabletop to position each cup before him. Coffee grounds float to the top as steam wafts across the table.

He takes one of the two chairs, reaches for a spoon, and placing his nose just over the cup, he gently stirs the coffee carefully smelling its aroma. Spinning the table to the next cup, he repeats the ritual.

An older man whose voice has grown crusty after years of smoking sits in the other chair. He too takes a spoon, swishing the coffee back and forth as he sniffs the redolence of each cup.

In the coffee business, this rite is known as "breaking the cup," and coffee-tasters at the McGarvey Coffee Co. in Minneapolis do it every day.

"You can tell almost as much from smelling the coffee as from tasting it," said Douglas Carpenter who, along with veteran coffee taster Ed Goblirsch, samples every kind of coffee the McGarvey Company considers buying.

"It's an important quality control. We can decide to accept or reject a shipment of beans on the basis of these cuppings," Carpenter said.

He and Goblirsch continue the cupping ritual as he takes another spoon and pulls the spittoon between his legs. Carpenter ladles a spoon full of coffee, slurping voraciously in an attempt to draw the coffee as far back in the mouth as possible. Recording the taste in his head, he spits the coffee into the brass spittoon. After Carpenter tastes each cup, Goblirsch takes his turn.

"It's important to roll the coffee around in the back of the mouth. There's greater taste sensitivity there," Carpenter said. "Slurping helps you draw back."

Disposing of the coffee via the spittoon is also important because sometimes the two tasters cup 20 or more samples. "If we didn't, we'd float away," he said.

Although Carpenter has been tasting coffee for eight years, he didn't buy any beans until after he'd tasted daily for a year and a half.

"At the beginning, I didn't know what I was looking for. In fact, the first time I tasted, I spit on my tie rather than into the spittoon."

"It takes time to become a discriminating taster. And you must cup daily to catch the nuances of the beans," he said.

"It's relatively easy to tell a good cup from a bad one, but in the business, you have to learn to tell values. You learn to build references in your mind," Carpenter said. "We pick out things the normal consumer wouldn't find." Goblirsch, who has tasted coffee for over 30 years, agreed.

The two tasters sample each coffee over several days looking for imperfections in the beans, the roasting time or temperature, or the blend.

Before deciding whether to purchase a particular kind of bean, McGarvey's tasters examine the green beans, which vary in color intensity depending on the variety and the year as well as the manner in which they were harvested and washed. This initial preparation is extremely important. Once the red cherries are picked from the coffee trees, they are cracked off and the beans are washed and dried for four or five days on a large concrete area. If the beans are not dried properly, they become fermented. One fermented bean can ruin an entire pound.

After the beans are roasted, Carpenter compares the green beans to the roasted ones.

imperfections, which sometimes appear only after roasting, can affect the taste, souring the coffee.

Roasting is a crucial step in producing a good coffee. "You can tell the difference in taste of coffee by its darkness. The lighter the coffee is, the less developed it is," Carpenter said. "It's like popcorn. If it's too light, it retains a green flavor. You can tell it's not totally developed. But if it's too dark, it has an overpowering roast flavor."

Besides tasting the coffee to determine its roast flavor, the McGarvey Co. also tests its coffee color in a reflection meter, which gives



a standard reflection for the industry.

Generally, coffee is roasted at 400 degrees Fahrenheit for about 14 minutes. The process colors the bean and activates the oils. Beans for espresso, for example, are roasted longer so that more oils are brought to the surface of the beans, resulting in a much heavier tasting coffee.

Good coffee usually is described as clean, sweet, sound. But bad coffee might be labeled sour, rubbery, swampy, grassy or foxy.

In addition to determining whether to accept or reject particular beans, Carpenter and Goblirsch must decide relative values. For example, they must judge whether a Mexican prime wash is as good as a Guatemalan extra prime wash, both in terms of price and in terms of how it will fit with the McGarvey blend.

"The more time spent on cupping lessens problems later. We can usually find problems here (at the cupping table)," Carpenter said. "It's not unusual for us to reject a particular coffee."

Cupping takes on an even greater financial importance because about 85 percent of the cost of coffee production is tied up in selecting the right beans and concocting the right blend. Labor costs add up to only about 6 or 7 percent of the product, according to Bob Mc-



Checking the beans.



Garvey, owner of the company his father founded 54 years ago.

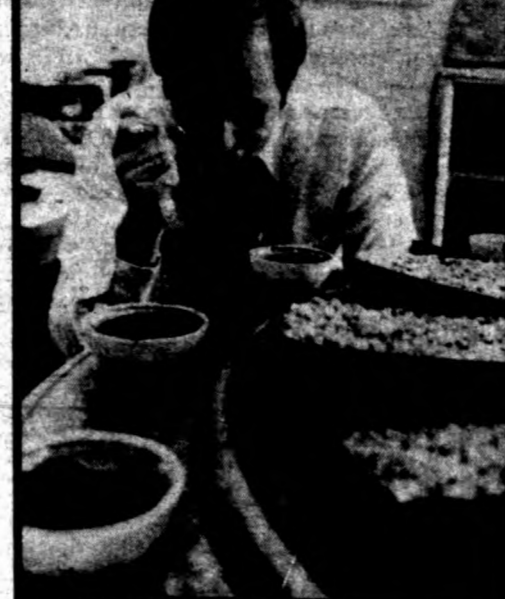
The primary coffee marketed by the McGarvey Company is a blend of seven or eight different coffees. Although they do not divulge the constituents of that brew, McGarvey said about 70 percent is made up of mild coffees while 30 percent is Brazilian. "By using several different coffees, none are overpowering," McGarvey said.

Although the McGarvey blend has a standard taste, it's not always made with the exact same coffees. "Maybe one of the coffees in the blend is available only two to three months of the year," McGarvey said. "We will have to replace that particular coffee in the blend. Cupping allows us to find which coffee will fit with our blend, maintaining a constant taste. We will only substitute one coffee in the blend at a time."

Coffees from different countries have certain characteristics. "Ethiopian coffee, for example, has too wild a flavor to mix with Guatemalan coffee," McGarvey said.

But Mocha and Java coffee are quite complementary.

The McGarvey Coffee Co. roasts about 40,000 pounds of coffee each day on the fourth floor of its building located in Minneapolis' warehouse district.



Slurping.

"It takes time to become a discriminating taster. And you must cup daily to catch the nuances of the beans."



There, three huge roasters, each holding about 528 pounds of coffee beans, operate continuously from 8 a.m. to 4 p.m. Once the coffee is roasted, seven gallons of water are automatically released to cover the beans, cooling them as it stops the roasting action.

Coolers with circulating fingers filled with cool air continue the cooling process as they stir the beans, forcing them through a metal chute to the third floor where they are cleaned of foreign substances. Air forces the beans back through another chute to the fourth floor where they are stored in huge tanks.

Grinders on the third floor complete the final processing step before packagers ready



Tasting.

the coffee for the McGarvey consumers.

The building is filled with a strong coffee aroma. Back in McGarvey's office, located on the first floor, two coffee pots are perched on the side of his massive desk.

The McGarvey Company has grown from a small retail store at Nicollet and Lake to the only coffee roaster in Minneapolis. In the past 15 years, McGarvey purchased the last 11 local coffee roasters.

Today he has salesmen throughout Minnesota, Wisconsin and Iowa marketing the brew. Carpenter and Goblirsch check daily at the cupping table.



Spitting.



Photos by Mark M. Nelson



If the beans are not dried properly they become fermented. One fermented bean can ruin an entire pound.

Coffee and Health

By KATHRYN KAHLER

Despite rumors that coffee may be hazardous to your health, most Americans can feel relatively safe in drinking moderate amounts of coffee each day.

Although coffee contains caffeine, a potent stimulant, consuming one to two cups a day will not harm an individual. And coffee will increase one's alertness and motor performance, according to Dr. Frederick Shideman, professor and head of the department of pharmacology at the University.

"Skills in tasks that are well-learned will be improved, for example, typing," Shideman said. "But if the task is recently learned, the caffeine may have no effect or may cause some deterioration in performance."

Generally, coffee is not considered a toxic substance. But theoretically, a person could consume a toxic amount of caffeine—about 10 grams—from drinking 70-100 cups of coffee one-after-another. A normal cup of coffee contains 100-150 milligrams of caffeine. It is unlikely that someone could actually consume a lethal dose, Shideman conceded, but as little as one gram of caffeine can produce adverse side effects.

Coffee drinkers who gradually increase their daily intake can expect to develop some tolerance. "Small doses may produce less effect," Shideman said.

"But habituation, psychic dependence, and some physical dependence also occur in some

situations," he said. Moderate to heavy coffee drinkers, when deprived of the brew, sometimes complain of symptoms described as the withdrawal syndrome: irritability, restlessness, headache, nervousness and lethargy. "Some people develop a required level (of coffee intake) to perform at a normal level of activity," Shideman said.

Conversely, some people are so sensitive to the caffeine content of coffee that one cup will keep them awake for hours. Others can drink four cups and go to sleep immediately.

"This sensitivity to the stimulating action is inherent," Shideman said, "just as some people are more susceptible to cardiovascular problems and disturbances in the rhythm of the heartbeat."

Although moderate coffee drinking has been approved by Shideman as well as other researchers throughout the country, many people experience physical problems besides the withdrawal syndrome which they attribute to coffee—insomnia, diarrhea, nausea, mild delirium, circulatory problems, ulcers, birth defects and heart trouble.

Some of these may be the direct result of drinking too much coffee, while others definitely have different origins. Research on the link between coffee intake and birth defects, mutations and heart trouble has failed to produce any alarming results.

Although coffee contains other xanthines, notably theophylline and theobromine, in addition to caffeine, they have little effect on the central nervous system when compared to caffeine. It is caffeine that principally stimulates the central nervous system.

If enough is consumed—10 or more cups—coffee can increase muscular activity, disturb the rhythms of the heart and act as a diuretic which results in increased loss of fluid

through the kidneys.

Although caffeine is the xanthine with the least effect on the heart, its role should not be overlooked in circulatory problems. However, theophylline is usually responsible for increasing the contractions in the heart that results in an increase in systemic blood flow and decrease in the amount of blood flowing to the brain. "Caffeine has a direct stimulating effect on the heart, but its effect on blood pressure is unpredictable," Shideman said.

Some individuals develop irregularities or extra beats in the heart, Shideman said. However, many of these effects depend on the individual and can vary from one to another, he said.

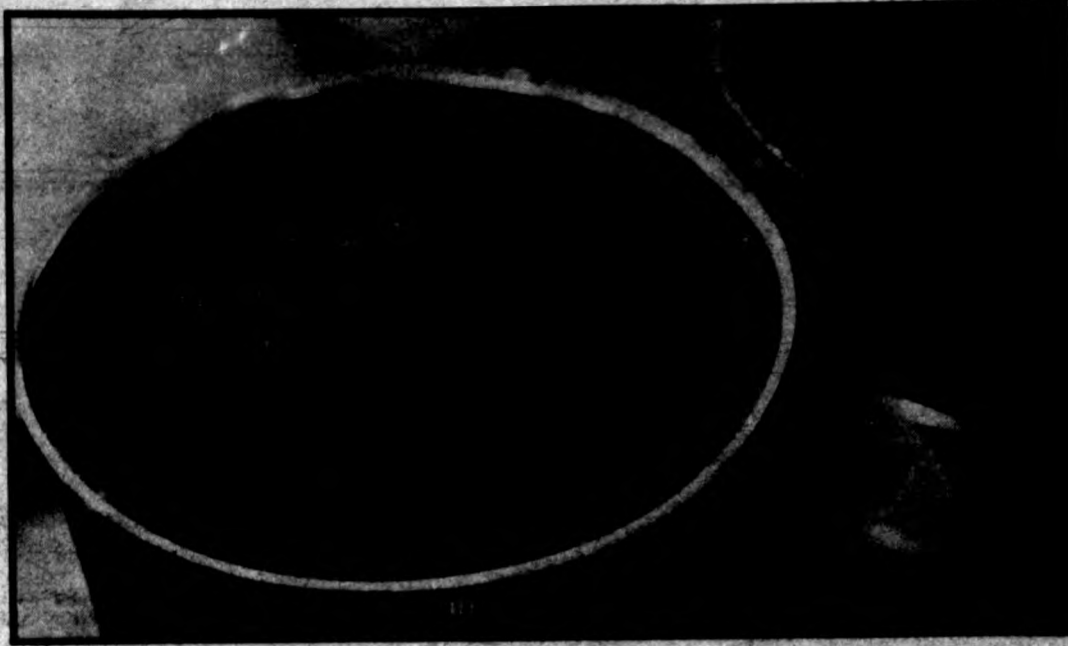
One problem common to coffee drinkers is increased gastric secretion. Caffeine, combined with oils found in coffee, acts to cause nausea and sometimes diarrhea.

Experimentally, researchers have been able to produce ulcers in research animals by injecting the animals with large amount of caffeine. People with peptic ulcers generally are advised to restrict or eliminate their intake of caffeine-containing beverages which include coffee, tea, and cola beverages. However, researchers are unwilling to say that coffee can cause ulcers.

Likewise, Shideman contends it is highly unlikely that coffee, in relatively small amounts will cause mutations, birth defects or cancer. "Like anything, it's a matter of moderation," Shideman said.

Although coffee has received most of the adverse publicity because of caffeine, tea leaves contain somewhat more caffeine than coffee beans. However, the preparation of the two brews creates an almost equal caffeine level.

How to brew your cup of java



Although most coffee drinkers prefer to sip the aromatic liquid unadulterated, there are a number of ways to "spruce up" the brew.

But before one can explore the many variations on a theme, the perfect cup of coffee must be brewed. Most coffee makers come with their own instructions which should be followed.

However, there are a few basics that can't be overlooked, according to Helen Corbitt, the famous Yankee-born food authority who helped mold the reputation of Neiman-Marcus's Zodiac Room in Dallas, Tx.:

- Use only fresh coffee taken from a tightly covered can;
- Use fresh cold water and don't let it boil excessively;
- Use only clean equipment; and
- Measure the ingredients carefully. Most people prefer coffee made with one tablespoon coffee to each cup plus an extra tablespoon for the pot.

Once a technique has been perfected for never-fail coffee, the connoisseur can experiment and change the breakfast-only drink into a delicate after-dinner treat. Some prefer a bit of black coffee as a complement to an exquisite liqueur, for example Drambuie, while others savor coffee blended with brandy, liqueurs and spices.

For those who like a nonalcoholic after-dinner treat, a tablespoon of praline, chocolate, French vanilla or a number of other ice

creams can dazzle a simple cup of coffee. As the ice cream melts, it leaves a thick, rich cream through which to sip the coffee.

Coffee is also delectable as an adornment to the cake it made famous—coffee cake. Although it contains no coffee in its blend of eggs, flour, butter, sugar and nuts, it acquired its name because the sweet, mouth-watering morsels of the cake flatter even the bitterest blends of coffee.

Whatever your taste and gastronomic talents, here are several recipes to enhance even the blandest cup of coffee.

Merk's Coffee Cake

- 1/2 cup shortening
- 1/4 cup sugar
- 1 teaspoon vanilla extract
- 3 eggs
- 2 cups sifted flour
- 1 teaspoon baking powder
- 1 teaspoon baking soda
- 1/2 pint commercial sour cream
- 6 tablespoons butter, softened
- 1 cup firmly packed brown sugar
- 1 teaspoon cinnamon
- 1 cup chopped nuts

Cream shortening, sugar, and vanilla thoroughly. Add eggs, singly, beating well after each addition. Sift flour, baking powder, and soda together. Add to creamed mixture, alter-

nately with sour cream, blending after each addition. Spread half of batter in 10-inch tube pan that has been greased and lined on the bottom with waxed paper. Cream butter, brown sugar and cinnamon together. Add nuts; mix well. Dot batter in pan evenly with half of nut mixture. Cover with remaining batter. Dot with remaining mixture. Bake at 350 degrees F about 50 minutes. Cool cake 10 minutes; remove from pan.

Cafe Brulot

- 6 lumps sugar
- 9 ounces (6 jiggers) brandy
- 1 twist lemon
- 2 twists orange peel
- 2 sticks cinnamon, broken
- 12 whole cloves
- 1 1/2 cups strong hot coffee

Place all ingredients except the coffee in the blazer of a chafing dish and heat gently, stirring. When well warmed, light the brandy and let it burn for about 1 minute. Slowly pour in the coffee, then ladle into demitasses. Serves 6.

Irish Coffee

- 1 teaspoon sugar
- 1 1/2 ounce Irish whiskey
- 5 ounces strong hot coffee

1 tablespoon whipped cream (more for richer coffee)

Rinse out glass with very hot water. Put the sugar, whiskey and coffee in it. Top with whipped cream or, if preferred, float a tablespoon of unwhipped heavy cream on top. Serves 1.

Iced Mocha Coffee

Melt 6 ounces bittersweet chocolate over boiling water and stir in 1/2 teaspoon cinnamon. Stir the mixture gradually into 4 cups double-strength coffee. Pour the coffee into tall glasses filled with ice and serve with sugar and cream.

Iced Rum Coffee

Fill a tall glass with ice and pour into it 2 tablespoons Jamaica rum. Fill the glass with cooled coffee and top with whipped cream.

Cafe au Lait

Heat milk in the top of a double boiler, beating constantly with a rotary beater until it is hot and foamy. Pour the hot milk into a pitcher and fill another pitcher with freshly brewed hot coffee. Fill cups by pouring from both pitchers simultaneously so that the liquids blend smoothly as they are poured.

Kahua

- 4 cups water
- 3 cups white sugar
- 1 cup brown sugar

Bring these ingredients to a rolling boil. Mix 2 ounces Kava instant coffee with a small amount boiling water to make a paste. Add paste to syrup and bring to a boil. Add 1 vanilla bean (split lengthwise) and let cool. Add 1 quart brandy and stir. Let sit from three minutes to three hours. Bottle in amber or dark bottles. Makes about 2-3 quarts.

Cafe Liegeois

- 4 ounces strong coffee, chilled
- 4 ounces vanilla ice cream
- 1 ounce brandy

Put all ingredients in an electric blender and whirl until smooth. Serve in a large stemmed goblet. Serves 1.

IF YOUR FIRST NAME IS
RON
This ad, with I.D. entitles you to \$5 off regular retail price of any pair of jeans.
Expires 1/31/77
britches
1314th St. S.E.

TV-STEREO-RADIO
Audio Components Service
QUICK REPAIRS THAT SAVE YOU MONEY
Have it fixed today!
We repair most makes and models
Recreation, Inc.
419-14th Ave. S.E. 338-2777
Dinkytown Open Eves.

AUTO INSURANCE
Low Rates
Monthly Payments
CALL FOR QUOTES
822-6666 822-7983
Germain Insurance Agency
315 W. 46th St., Mpls.

SALE
Sweaters
crew necks
\$20.00
RI Johnson
DINKYTOWN

THE GROWTH OF CHRISTIANITY
From a Jewish sect to a world wide religion
Speaker:
Richard H. Stadler
Thursday 12:15-1:00 p.m.
COFFMAN MEMORIAL UNION, Rooms 325-326
SPONSORED BY: LUTHERAN COLLEGIANS

DEVELOPMENT OF CONSCIOUSNESS
THE TECHNOLOGY OF CREATING AN IDEAL SOCIETY
A special presentation on the Transcendental Meditation Program as it relates to development of consciousness.
Wednesday, January 26 • 3:00 & 7:30
Murphy Hall Room 308
The creative genius that does manifest in a minority of exceptional men and women reveals some of the unlimited variety and potential within every person. When the state of least excitation is enlivened, all the impulses of the mind align themselves with the field of Creative Intelligence. This meeting will investigate scientific research on the Transcendental Meditation Program as a technique for maximum self-development, and the unbounded range of personal and societal benefits that result. In addition, there will be a special videotape "Creating an Ideal Society" by Maharishi Mahesh Yogi. Learning the TM technique is not a requirement.
For more information call 378-1010 or 929-0071
SPONSORED BY THE SIMS CLUB

YOUR ON-CAMPUS THEATRES
"Deliciously funny... Zany madness" N.Y. Daily News
"My Friends" at 7:30-9:30 • R
CAMPUS
DOR & WASH. S.E. • 378-3778
All Seats! \$1.00
All Times! "Last Picture Show" at 7:30
"Easy Rider" at 9:30 • R
VARSITY
1218 & 6th St. S.E. • 378-9492

afternoon discussions . . .
Literature and the Other Arts
3:15 P.M. TODAY - 26 January
305 Lind Hall
"TELEVISION & LITERATURE"
Horace Newcomb
cupc
Sponsored by the English Activities Committee and the English Department

EAT IN OR TAKE OUT
SPECIALIZING IN LEBANESE FOODS and BAKERY GOODS
mily's LEBANESE DELI
641 University Ave. N.E. / 336-1416 / Open daily except Tues.
JUST 5 MINUTES FROM CAMPUS.

CLEARANCE SALE
40% OFF
Sale on through February 15, 1977
PAKISTAN INTERNATIONAL IMPORTS
808 Washington Ave. S.E. Mpls.
Open M-F, 11:30-2 P.M.
2:30-6 P.M.

Chemistry professor emeritus is hardly the retiring type

By JOHN OSLUND

Old soldiers never die but old chemists refuse even to fade away. At least that's the case with Izaak Maurits Kolthoff, University professor emeritus of chemistry.

Although "emeritus" was added to his title in 1962, he can be found working in his Smith Hall office every weekday afternoon—unless, of course, he's off lecturing or receiving another honor somewhere in the world.

Kolthoff, who will be 83 in February, is generally recognized as the father of analytical chemistry, although he modestly contends that description is "a very good exaggeration."

"I have a lot of scientific children," he said "but I am hardly the father."

His "children" have included former deans of Harvard and the Massachusetts Institute of Technology as well as many prominent scientists in industry.

He was born in Almelo, Holland, and received his doctorate in 1918. In 1924 he made a lecture tour of the United States and that led to a cable from the University asking that he come for a year to head the department of analytical chemistry. He has been here ever since.

Analytical chemistry is the science of determining what elements are present in a compound (qualitative analysis) and in what amounts (quantitative analysis).

While Kolthoff's list of achievements is long and still growing, he is probably best known for his work on rubber research during WW II.

The U.S. government had asked him to join the team of scientists working on the Manhattan Project, which led to the creation of the atom bomb. But Kolthoff said in an interview Monday that he felt his many contacts in Germany and Holland would have put too much pressure on

him—from a security standpoint—and he elected to work on the rubber project instead.

"My role in the rubber research is terribly exaggerated," he said. "Most of the work on the rubber recipe came from Germany, but exactly how it got here is still confidential."

The research was critical because after the Japanese cut off the supply of an important ingredient from New Guinea, there was no way to control the consistency of rubber until a substitute was discovered.

"The method is pretty much of a secret" even now, Kolthoff said.

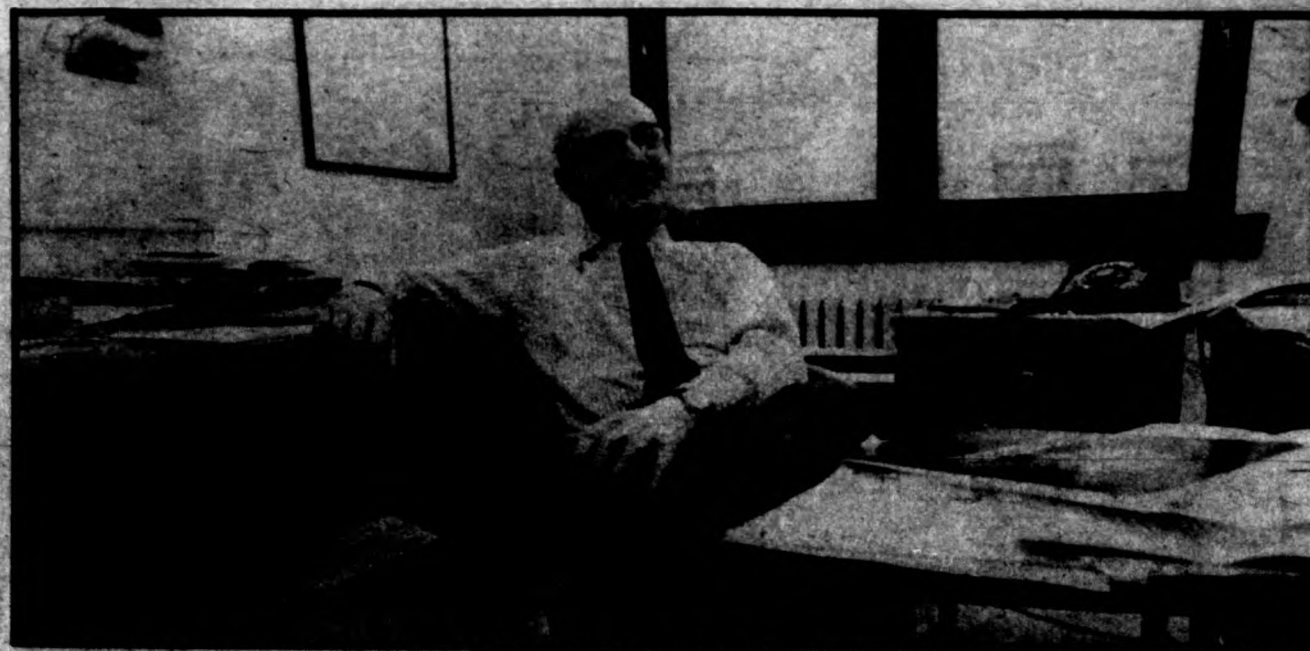
After the fall of Berlin, Kolthoff got a note from the Soviet Embassy, on behalf of the Academy of Sciences in Moscow, inviting him to a conference of world scientists. The purpose of the meeting, the Soviets said, was to share knowledge among the victorious nations.

Kolthoff was given permission to attend the conference by the Reconstruction Finance Corp., an agency that dealt with war-time research. But he was ordered not to reveal any data that might help the Soviets.

Kolthoff, however, had many friends among the scientists attending that conference and he didn't want to give merely superficial talks. He arranged a meeting with W. Averell Harriman, the ambassador to Russia, to discuss the dilemma.

"Harriman impressed me very much," Kolthoff said. "He told me to use my own judgment" in talks with the Soviets. As a result of opening the talks up a little he was able to gain a great deal of valuable information from the Soviets.

After the war Kolthoff was sent to Germany with the rank of colonel to help evaluate what was left of the German scientific community. He was told to use his intuition as well as his scientific skills in weeding out Nazi sympathizers from among the people who would have to rebuild the German state.



Izaak Maurits Kolthoff
University chemistry professor emeritus and knight in the Order of Oranje-Nassau, The Netherlands.

"I was told my intuition was very good," he said with a smile.

Although the constraints of age have taken their toll, Kolthoff can be found most mornings walking along the river bank at about 7:30, before he adjourns for breakfast at the Campus Club in Coffman Union. He works there until about 11. Then he walks to his Smith Hall office, passing the new chemistry building named for him.

"I have a tendency to overcommit myself," Kolthoff said as he pored over another revision of his treatise on analytical chemistry.

He usually has a cocktail and dinner at the Campus Club before retiring to his room at Powell Hall about 9 p.m. Kolthoff was knighted by the Netherlands in 1938 and holds the rank of commander in the Order of Oranje-Nassau. In 1964 he received the American Chemistry Soci-

ety's Willard Gibbs Medal. He also served as honorary president of the International Polarographic Congress for his work in developing the polarograph, a research instrument that measures electrical current of conducting elements.

He also has received the Gold Medal in analytical chemistry from the American Pharmaceutical Association, which subsequently has been named the Kolthoff Gold Medal.

Green resigns from council's consumers' unit

Minneapolis Alderman Zollie Green (DFL, 9th Ward), acquitted last week of a bribery charge, has resigned from the City Council's consumer affairs committee amidst partisan wrangling.

Independent-Republicans Walter Rockenstein (11th Ward) and Charlee Hoyt (13th Ward) Monday issued a press release asking Green to resign from the committee immediately, and calling on the City Council to censure him for his behavior while a member of that committee.

The bribery charge stemmed

from a \$1,000 loan Green obtained from a man who was applying to have his liquor license transferred. Green sat on the committee that approves such applications. He made no mention of the loan at the time of the man's application.

Although he was acquitted, Green admitted he should have disqualified himself when the transfer came before his committee.

The political bickering arose after Rockenstein and Hoyt publicly called for Green's resignation when it was already common knowledge that Green had asked to

be removed.

DFL Majority Leader Keith Ford (10th Ward) said Rockenstein and Hoyt were grandstanding.

Rockenstein countered that he had intended all along to call for Green's resignation.

Rockenstein will bring his censure motion before the full council Friday. If passed, it would not legally affect Green's right to continue as alderman.

But a head count of aldermen, seven of whom are Democrats, shows that any censure of Green will have to come from his constituents in the next election.

CLIP & SAVE

LESSON IV: CONSTRUCTING THE WELL-MADE TERM PAPER (OR ORAL REPORT)—A STRATEGY

beginning
A COURSE OFFERED BY THE UNIVERSITY LIBRARIES IN THE MINNESOTA DAILY*
a daily affair

*Supported by a grant from the University of Minnesota Educational Development Program.

This is the fourth lesson of nine lessons for BEGINNING LIBRARY to be published on consecutive Wednesdays in the Minnesota Daily. For additional information, call 373-3083 (Wilson Library Reference Division).
Copyright Regents of the University of Minnesota, 1977.

"Prose is architecture . . ."

Ernest Hemingway

The same steps of advance planning and preparation which are necessary to construct a work of beauty in wood or concrete are also necessary to construct a work of beauty in words, at least when expository prose is concerned. This beginning course in library research is designed to help you with the phases of planning and preparation required for a term paper. Lesson IV will suggest 8 basic steps for you to follow as you prepare a term paper; later lessons will acquaint you with specific library aids to help you with each step.

1. MAKE A GOOD BEGINNING

Decide from the beginning to write a good paper. Why invest your time, emotion, and effort in a loser?

2. SEARCH FOR AN INTERESTING POSSIBILITY

Try to write on a topic that really interests you and will sustain your interest until the paper is finished. If you don't care, who will?

3. SURVEY THE TERRITORY

Narrow the topic so that it can be managed in the number of pages that have been assigned. If you need help, ask for some background reading on your topic at the reference desk in the library. General or specialized encyclopedias are sometimes excellent aids to help you get started. At the same time, look up words or terms related to your subject that are not quite familiar to you in a dictionary. Each hour that you take to narrow and refine your topic at the beginning can save you hours and hours later. THIS MAY BE THE MOST IMPORTANT STEP IN YOUR STRATEGY.

4. PREPARE A BLUEPRINT

Whether you actually write a detailed outline of your report at the beginning or keep an idea of the structure in your imagination, you should have a plan of organization and development and some idea about the basic structure of the finished product throughout the process.

5. LINE UP YOUR SOURCES

Start assembling a bibliography, a list of sources you wish to consult, on cards or slips of paper. First, however, you might find it helpful to make a checklist of the types of sources that might be likely to yield information on your topic and that should be investigated to make sure your paper has as much breadth as possible. Ask yourself which of the following might be helpful:

- a. books on the subject?
- b. periodical articles?
- c. newspaper articles?
- d. government reports?
- e. statistical reports?
- f. non-print media?
- g. person-to-person interviews?
- h. archives?

You may decide to use some sources instead of others—for example, newspaper articles or interviews instead of books—because of timeliness.

6. USE YOUR LIBRARY TOOL KIT

The specific tools you use in assembling your bibliography will depend upon the types of sources you wish to locate, for example:

- | | |
|-------------------------|---------------------------------------|
| Source | Typical finding tools |
| a. books on the subject | card catalog and bibliographies |
| b. periodical articles | indexes, abstracts and bibliographies |
| c. newspaper articles | newspaper indexes |
| d. government reports | indexes to government publications |

You might wish to consult one of the available guides to reference sources as an aid in discovering specialized bibliographies, indexes, abstracts, etc., that are available on your subject. The best-known comprehensive guides to reference sources include the following:

- a. Eugene P. Sheehy's (formerly Constance Winchell's) *Guide to Reference Books*
- b. A. J. Walford's *Guide to Reference Material*
- c. C. M. White's *Sources of Information in the Social Sciences*

In addition to these comprehensive guides, dozens of specialized guides are available to assist the researcher in finding reference sources for individual subject disciplines. These guides are available for your use in the reference collections of the library.

7. COLLECT THE BUILDING MATERIALS

Assemble your data or information on slips of paper or cards as you use each source on your bibliography. Include summaries of major ideas, as well as direct quotations, "hard" data in the form of factual materials or statistics, etc., with a note in each case about the location of the data (at the very least, title and page number) sufficient to use for a footnote should you use the information in your paper and need to locate your source for your reader.

8. CONSTRUCT

As you draft, revise, and rewrite your report, keep reviewing what your instructor has told you about the characteristics of an acceptable report in terms of organization, format, style, and mechanics. Review also what you have been told about the use of "authorities" on your subject and the evaluation of your sources in terms of expertise and timeliness.

To look for help on the proper form to use in typing footnote citations or bibliographic references, you might find a style manual useful. Two of the most popular style manuals that are available in most library reference collections are Kate Turabian's *A Manual for Writers* and the University of Chicago's *A Manual of Style*, but your instructor may ask you to use another.

VOCABULARY

- | | | | |
|-----------|-------------------------|-------------------|----------------------------|
| abstracts | bibliographic reference | encyclopedia | guide to reference sources |
| archives | bibliography | footnote citation | indexes |
| | | | style manual |

CLIP & SAVE

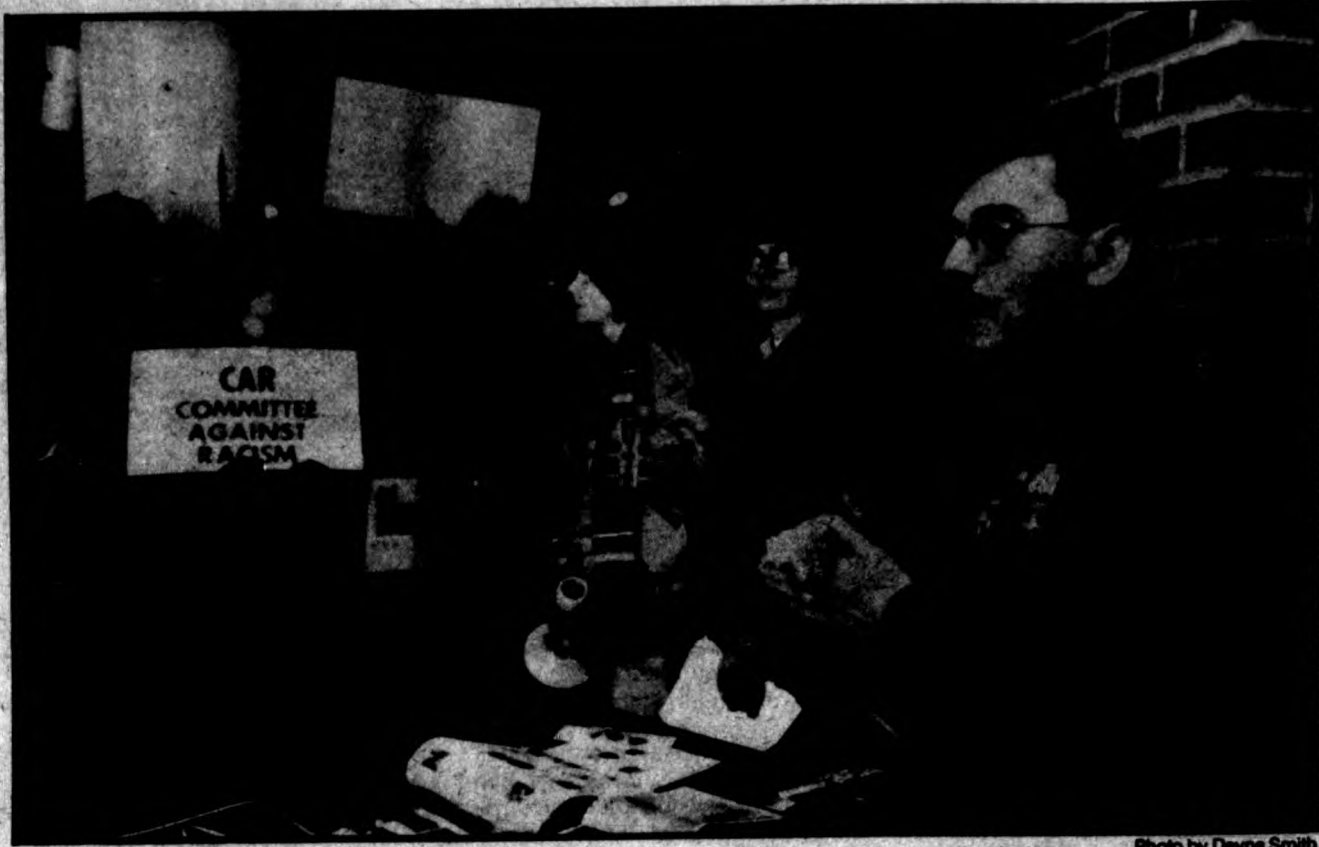


Photo by Dayna Smith

Demonstrators from the Progressive Labor Party (PLP) and the University Committee Against Racism (UCAR) confronted Marine Corps recruiters Tuesday at Coffman Union to protest the arrest of 14 black Marines. Shouting, "Marine recruiters off campus," about 15 or 20 demonstrators marched around Northrop Mall before crossing over Washington Av. to Coffman. The demonstrators were protesting the jailing of the 14 Marines by a military court after a fracas inspired by alleged activities of the Ku Klux Klan at Camp Pendleton, Ca.

CAMPUS NOTES

New bus stop

Effective Wednesday, January 26, 1977, the Route 52-J U Commuter Buses (which serve the areas along Silver Lake Rd., Stinson Blvd., and 44th Av. NE.) will make an additional on-campus bus stop. In the morning, they will stop on University Av. at 15th Av. and in the afternoon they will stop on Fourth St. at 15th Av.

Homecoming

Applications for positions on the 1977 Homecoming Committee should be submitted by Friday to 235 Coffman Memorial Union. Applicants should include a brief note detailing experience, interest, and intentions. For more information, call Sally Thompson at 373-2435.

EDP meeting

A workshop for faculty interested

in knowing more about or applying to the Educational Development Program (EDP) will be held from 2:15 to 3:30 p.m. Feb. 3 in Room 5 of the architecture building.

The EDP and its uses will be explained and questions about individual project ideas answered.

The EDP supports faculty and faculty-student projects aimed at improving University educational programs. In 1977-78, there should be \$365,000 to \$479,000 available, depending on legislative action.

About 75 percent of the available resources will support projects proposed and evaluated by student-faculty committees within individual colleges. The remainder will be awarded to proposals submitted for review at the all-University level.

College EDP committees must forward top-ranked proposals to the Center for Educational Development by March 7; dates on which these committees must receive proposals vary by college but most are in late February.

Proposals for consideration at the all-University level will be accepted at the Center for Educational Development, 317 Walter Library, until April 4.

For further information, call 373-4537.

Hey There, Gov. Perpich!

MPLS. RAGSTOCK

Can Help in the Energy Crisis!

MPLS. RAGSTOCK & EXPORT CO. has the best in second hand caps, scarves, sweaters, wool pants, wool socks, flannel shirts, stormcoats, mackinaws, men's and women's overcoats & lots of other warm stuff.

Specials:
 Brand new wool suits.....\$9.00 and up
 (with narrow legs)
 Brand new G.I. Buckle Overshoes.....\$2.00
 (size 7 only)

MPLS. RAGSTOCK & EXPORT CO.

824 4th St. Mpls. 333-6576 • Hours M-F 8 A.M. - 5:30 P.M., Sat. 9:30 A.M. - 5:00 P.M., Mondays 'til 9:00 P.M. FREE PARKING at Rear of Building.

AL JOHNSON'S

JANUARY CLEARANCE STILL IN PROGRESS

378-1442 CLOTHIER Dinkytown

CHANGING CHANNELS
 'an alternative video magazine'
 WEDS. 7:30PM KTCA CH 2

presented by University Student Television

January 26, Wednesday, 7:30 P.M.
CHANGING CHANNELS: OPEN ACCESS

CONVERSATIONS WITH FRANK BUTLER. A biography of the veteran radio and television actor who got his start in the Twin Cities. Produced by Steve Fredrick. And...

TICKET TO WRITE. A look at the work and life of Minneapolis Meter Monitors.

A service of University Student Telecommunications Corporation.

SAMMY D'S

Luncheon Special
11:00 - 3:00 Daily
 We are offering a full glass of our house wine with every one of our delicious lunches for only . . .

35¢

1301 4th St. S.E. • Dinkytown U.S.A. • 331-5200

SALE

Boots
Belts
Jackets
Bags

Tannery

dale's end in Dinkydale
Dinkytown

open Thurs. nite 'til 8:30

SALE

- SHOES • BOOTS
- DRESSES • GAUCHOS
- SWEATERS • BLAZERS
- JEANS • PANTS

STORE

Dinkydale
open Thurs. nite 'til 8:30



Fry Roofing pays \$13,500 in late licensing, pollution fines

By NEAL ST. ANTHONY

The Fry Roofing Co. Monday paid \$13,500 in overdue fines for violation of city licensing and pollution control ordinances. The north Minneapolis roofing material manufacturer faces a March 1 shutdown for refusal to install city-approved pollution control equipment.

The eleventh-hour payment averted seizure of thousands of dollars worth of company equipment by Hennepin County deputy sheriffs last Friday.

The fines date back to several Hen-

nepin County Municipal Court judgments in 1976. The maximum payment of \$300 each was ordered for 45 violation tags issued by the city inspection department.

However, the company failed to pay the fines within the prescribed time, according to a Minneapolis city attorney. The city then tried to garnish company accounts at two Minneapolis banks, but the combined balances barely covered one fine.

Last Friday, deputy sheriffs from the Hennepin County Sheriff's Office were sent to the plant at 1901 49th

Av. N. to confiscate equipment totaling \$13,500 in resale value.

The deputies were met at the company gate by Fry officials who asked them to wait until the following Monday so the company's home office in Chicago could be notified.

Monday the municipal court violations bureau received a certified check from the main office for \$13,585, to cover the fines and penalty for late payment.

The company still owes about \$1,000 in 1974 and 1975 fines. In addi-

tion, a city inspector said there are 89 tags outstanding that have not been prosecuted yet. City inspectors continue to tag the company daily for licensing violations and for polluting when smoke and a foul odor from the company smokestack are excessive.

On Dec. 14 a Hennepin District Judge ordered the company to shut down for causing a public nuisance in the residential area adjacent to it and for acting in bad faith for over a decade in its dealings with the city. The order said, however, that the

company would be permitted to reopen if city-approved pollution control equipment is installed in the smokestack.

The company thus far has failed to appeal the order to the Minnesota Supreme Court as it had threatened to do, according to the clerk of court.

Two weeks ago a Fry attorney said the company wants to negotiate with the city to stay open. But city officials said they would only be satisfied when the company showed good faith by installing the equipment.

MIDWINTER CELEBRATION OF LIFE

ALL PLANTS & SUPPLIES REDUCED WED.-SAT. ONLY

the greenery

DINKYDALE, UPSTAIRS

Travel Fair

Today 10-3

320 Coffman Union

etc 40 Coffman Union 373-0130

Take The Concert Home

LUCIANO PAVAROTTI

APPEARING AT ORCHESTRA HALL SUNDAY, JANUARY 30

ENJOY HIS FINE RECORDINGS ON *LONDON*

NOW AND AFTER THE CONCERT ON SALE THIS WEEK

SIX NEW SELECTIONS NEVER BEFORE AVAILABLE!
Luciano Pavarotti
The World's Favorite Tenor Arias

4.59 PER DISC

OUR ENTIRE STOCK OF LUCIANO PAVAROTTI'S RECORDINGS NOW ON SALE THIS WEEK

Our knowledgeable sales people will help you find exactly what you want ... People Into Music.

discount records!

DINKYTOWN 331-1374 323-14th Ave. S.E.	EDINA 920-7690 7101 France Av. Leisure Lane Shopping Ctr.
Mon.-Fri. 9:30-9:00 Sat. 9:30-6:00 Closed Sunday	Mon.-Fri. 9:30-9:00 Sat. 9:30-6:00 Sunday Noon to 5:00

IN YOUR HEART YOU KNOW YOU SHOULD BE WEARING OUR SOLE.

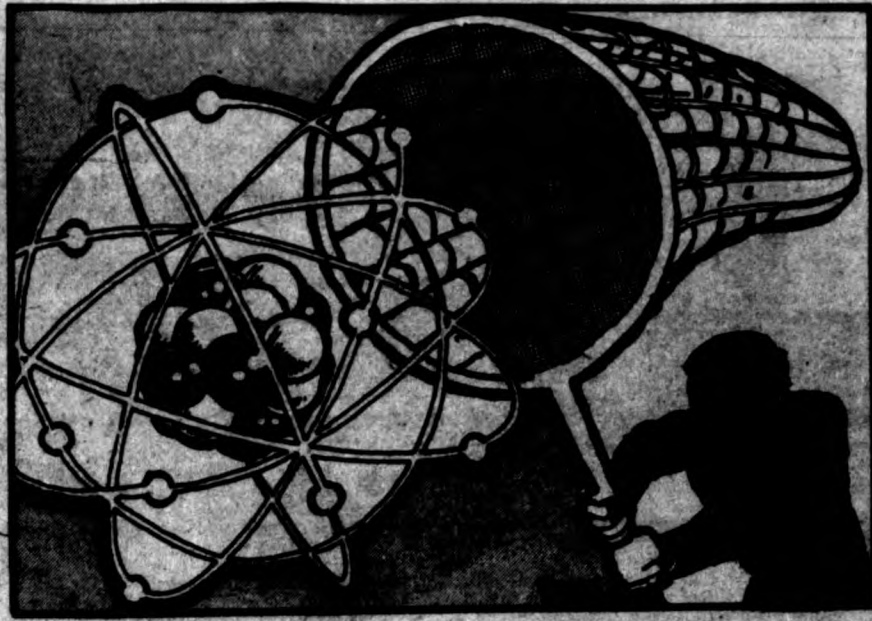
Earth shoe

You can buy an Earth Brand Shoe only at an Earth Shoe Store. BROCHURE AVAILABLE

EARTH SHOE

514 Cedar Avenue, Mpls., Minn. 55454 • Tel. (612) 338-8844
Southdale Center 66th & France, Edina, Minn. 55435 • Tel. 920-9453 GPG, Inc.

PCA board postpones decision on NSP nuclear plant licensing



By STEVE VOELLER

The citizen board of the Minnesota Pollution Control Agency (PCA) Tuesday postponed a decision on

whether to seek the reopening of license hearings for Northern States Power Company's (NSP) nuclear power plants.

Instead, a committee of three

board members will consider asking the federal Nuclear Regulatory Commission (NRC) to reopen licensing proceedings for NSP's Prairie Island and Monticello facilities.

The reopening of the hearings is sought by six environmental groups: the Minnesota Public Interest Research Group (MPIRG); Clear Air, Clear Water, Unlimited; the Minnesota Environmental Control Citizens' Association (MECCA); Friends of the Earth; the Northern Environmental Council; and the Audubon Club.

A representative for the groups offered a resolution for the board to consider.

The resolution said recent court decisions which challenged the adequacy of licensing procedures cast doubt on NSP's nuclear facilities.

The groups want the PCA to look at problems facing the nuclear power industry in the state, as well as alternatives to nuclear power.

PCA Director Sandra Gardebring said in a memo to the board that the

PCA staff should recommend the agency not to seek to have the licensing hearings reopened.

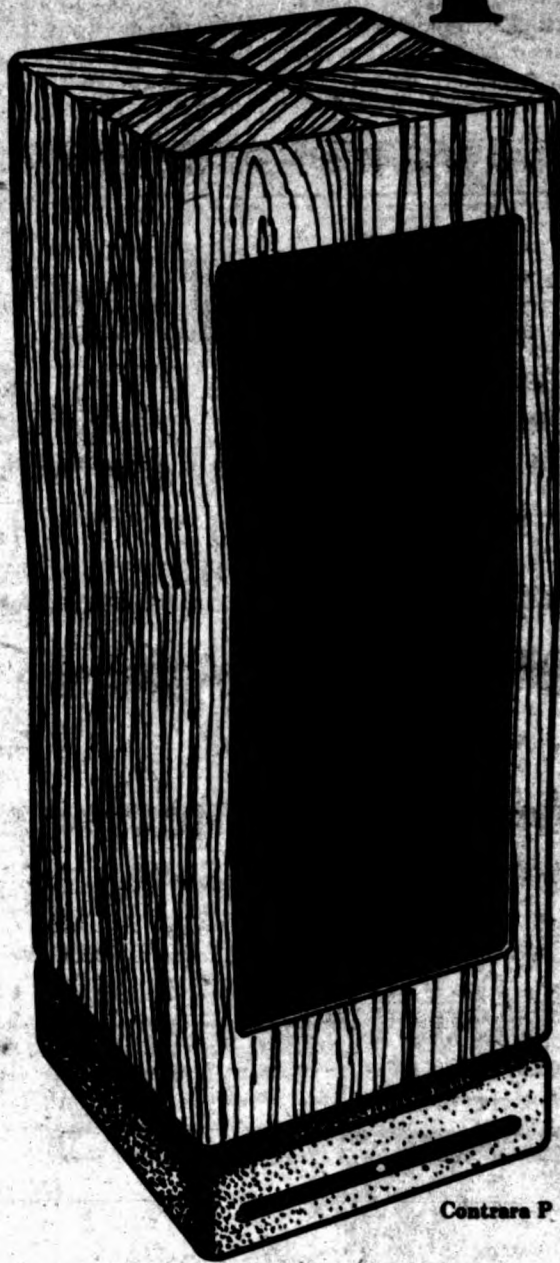
Gardebring said the rationale for nuclear power could be better addressed in the upcoming hearings on NSP's request to increase the amount of spent fuel that can be stored at the Prairie Island facility.

Because there are no fuel reprocessing plants in the country, the spent radioactive fuel the plants produce must be stored at the plant sites in special pools.

The fuel storage pools at both plants are almost filled. NSP is seeking permission from the NRC to store greater numbers of spent fuel rods in the pool at its Prairie Island facility. The PCA will intervene in the hearing on the proposed change in the fuel storage.

If NSP is denied permission to increase the fuel storage, the nuclear generating plants will have to be shut down when the pools reach capacity, unless a storage site can be found.

Sale-priced Luxury!



Contrara P

From Jennings Research, the expensive look and sound of Contrara Group Speakers.

From TEAM, incredibly low prices for a limited time only.

Save over \$25

Contrara P. Classic pedestal that's an extraordinary 2-way speaker incognito. Black wood base allows it to rotate nearly 360°. It's an impressive pedestal for displaying a vase or sculpture, then turns to reveal its dramatic full-range sound capabilities. Features two 8" woofers and a 1" tweeter; wood cabinetry with oiled solid walnut and walnut veneers. *N.A.V. \$225.00.

\$199

Save over \$15

Contrara Vector One. Ingenious 2-way speaker with passive radiator bass design for clear, resonating bass and phased array engineering so you hear sound in "real time." Features 8" active/8" passive woofer system and 1" tweeter with integrated acoustic foam surround and equalization switch; wood cabinetry with oiled solid walnut and walnut veneers. *N.A.V. \$159.95.

\$144 each
base not included

Save over \$35

Contrara Elan. (not shown) A larger, more sophisticated 4-way version of the P. Features phased array; equalization controls for midrange and tweeter; two 8" woofers, 1 1/4" midrange and 1" tweeter with integrated acoustic foam surround. *N.A.V. \$359.95.

\$324 each

Save over \$25

Contrara Vector Two. (not shown) A step up from the Vector One, this 3-way speaker has 10" active/10" passive woofer system, 4 1/4" midrange and 1" tweeter. *N.A.V. \$250.00.

\$224 each

Save \$7

Contrara R. (not shown) An elegantly sculpted horizontal rectangle that bears a striking family resemblance to the Pedestal. Though it doesn't rotate, this 2-way beauty, with its handsome walnut and walnut veneer cabinetry and black wood base, is sized to fit attractively on a shelf or on the floor. Inside, an 8" woofer and 1" tweeter make beautiful music. *N.A.V. \$125.00.

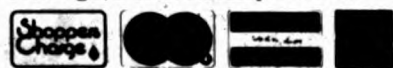
\$118 each

Contrara S. (not shown) Just like the R described above, but in a classic square configuration. *N.A.V. \$125.00.

\$118 each

*Nationally Advertised Value

Prices good until January 30, 1977.



TEAM ELECTRONICS

Team serves you in over 100 locations. Stop in soon at the one nearest you. Minneapolis 2640 Hennepin Ave. 377-9840 • Minnetonka Ridgedale Mall 544-7412 • Richfield 6413 Lyndale South 969-3288 • Roseville Har Mar Mall 636-5147 • St. Paul 455 Rice St. (Across from State Capitol) 227-7223 • West St. Paul 1733 South Robert St. 451-1765 • Brooklyn Park Village North Shopping Center 566-1560 • Dinkytown 1311 4th St. S.E. 378-1185 • Eden Prairie Eden Prairie Center 941-8901 • Edina Southdale Center 920-4817 • Maplewood Maplewood Plaza 777-3737 Prices and quantities may vary by location. © 1976, TEAM Central, Inc.

data

official daily bulletin

Vol. 28 January 26, 1977 No. 18
 Students and staff are urged to read the Official Bulletin & are held accountable for notices that affect them. They are also responsible for information on department bulletin boards.
 Notices must be received by 10 a.m. two days prior to publication & should be sent to Official Daily Bulletin, 248 North. Except for certain notices of general importance, notices will be printed early each week.
 ALL STUDENTS
 • A 911-511 Make-Up Plan
 2:15-4:15 p.m. Jan. 28, 287b Jones.

what's doing

All items for What's Doing must be submitted by 4 p.m. two days preceding publication. They must be University-community oriented. Forms may be obtained at Murphy Hall. This service is free.

Public Business Meetings
 Prayer Service, informal time together, 9:30 p.m. tonight, Murphy Hall, St. Paul Campus Ministry, 1467 N. Cleveland.
 Together Single Parents discussion group, interaction with other single parents in the areas of personal, family and academic needs, 2 p.m. today, 224 Coffman.
 The Gopher Radio Club already has a student run FM station. If you would like to turn in the world of amateur radio, come to our meeting tonight in 113 Space Science Center, at 8 p.m.

Circle K: Campus and community service projects planned, new members welcome, 8:30 p.m. tonight, 353 Coffman.
Concert: The University YMAA's new program, 7 p.m. tonight, U-YMCA, 15th and University Ave. SE.
German speaking students and staff: Brown bag lunch, noon today, 106 Fehwell.
Arts Club: parties, open to everyone with free equipment and instruction, 6 p.m. tonight, 60 Norris Gym.
U of M Reproductive Club: open to all interested in playing or learning to play, courts available after meeting, 7 p.m. tonight, 213 Cooke.
Inter-Nativity Christmas Fellowship: "James," led by Phil Kinzler, 11:15 a.m. today, 327 Coffman; "Claiming God's Promises," led by Remy Dieterich and Michelle Nelson, 12:15 p.m. today, 351 Coffman.
Bible Study: noon today, 31 Classroom Office Building, St. Paul campus.
Meditation-relaxation session: no experience necessary, 1:15 p.m. today, 253 Coffman.
Name Economics Board: 4:30 p.m. today, Fireplace Room, McNeal Hall, St. Paul campus.
Christian's Bible Study: everyone welcome, 12:15 p.m. today, 211 Aeronautical Engineering.

Lectures-Seminars
Transcendental Meditation program: introductory lecture, 3 and 7:30 p.m. today, 289 Murphy.
Political Theology: with Peter Fetting and Father William Teske, 7:30 p.m. tonight, University Episcopal Center, 1701 University Ave. SE.
Clinical Microbiology Seminar: "Viral Carcinogenesis," by Dan White, 11:15 a.m. today, Everts Amphitheater.
Microbiology Seminar: "Herpes Simplex Virus Infection of Rat Dorsal Root Ganglia in Culture," by Dr. Rick Ziegler, 12:15 p.m. today, A9-620 Health Sciences.

Joint Biological Science Seminar: "Barely Biological Television System Using PLT Electro-optic Shutters," by Aida Khashtala, 3:15 p.m. today, 289 Temporary North Court/Engineering.
Clinical Chemistry Research: "Hyperbilirubinemia," by Drs. Walid Yaminah and Hassan Mostafaeipour, 3:30 p.m. today, 178 Jackson.
Chromosomes Conference: "Retinoblastoma and Spindle Minute Duplication of Chromosome 13," by Mark Johnson and Jorge Yunis, 4:30 p.m. today, 2-639 Building A.
Library Subject Information meeting: certification program, applications and requirements will be discussed, 5:15 p.m. today, 230 Welling.
Pre-Business conference: if you are planning a career in business you need to know educational and employment options. Come to a panel discussion with members of the business community, 2:15 p.m. today, 330 Anderson.
Women's Studies Bag Lunch: "Poems From a Female Spirit: a Reading of Her Own Poetry," by Gayle Graham Yates, noon today, 468 Ford.
Shared Goals Involvement Seminar: by Dr. R. Birba, 2:15 p.m. today, 468 Hodgeon Hall, St. Paul campus.
Image Processing: Technology and Uses: by Professor William R. Fanta, 3:15 p.m. today, 102 Mechanical Engineering.

The Arts
Television and Popular Culture: by Horace Newcomb, 12:15 p.m. today, Theater Lecture Hall, Coffman.
Television and Literature: by Horace Newcomb, 3:15 p.m. today, 365 Lind.
Critical Issues Facing the State: excerpts from a briefing for Minnesota legislators prepared by the Minnesota State Planning Agency, on Public Affairs, 1 p.m. today, KUOM radio (770 AM).
Information
Recreational and public skating: 12:15-3 p.m. today.

Williams Agency: students admitted for 8K with paid winter quarter fee placement.
Travel Fair: free information and brochures from national tourist offices on travel anywhere in the world, 10 a.m.-3 p.m. today, 320 Coffman.

i-m slate

WEDNESDAY JANUARY 26 BASKETBALL COOKE HALL COURT 2
 Boston College (W) vs Wakefore..... 8:00
 Front. VII vs Saint. VI..... 7:30
 Tenn. N182A vs Cent. VII and VIII..... 8:00
 Minn. VI vs Front. IV B..... 8:30
 Cent. X vs Terr. IV B..... 10:00
COURT 3
 Campus Crusade vs The Cherry Pickers..... 8:00
 Ball Five vs Ski's Raiders..... 7:30
 Paul Primes vs Ashland Ave. Lakers..... 7:30
 Hillsdale R and G vs Dangling Darts..... 8:00
 Annonciators vs Minnetonka..... 8:30
 Terr. II C vs Saint. 8 Team..... 10:30
COURT 4
 Phi Omega Turkeys vs Phi Delta Chi..... 8:00
 Pulte Pair-a-dice vs WEE EEDYE..... 8:00
 Go For It vs Bandits..... 10:00
FIELD HOUSE COURT 6
 Team Discussion vs Special K's..... 8:00
 Front. VII WIZ. vs Terr. VI Sixers..... 8:00
COURT 7
 Chickenwolves vs The Silver Breakers..... 7:00
 Pygmies vs Shot in the Arm..... 8:00
 Hamel Hawks vs The Buns..... 8:00

BIERMAN 8
 Alpha Staff vs Myocardi Int..... 8:30
 Reborn Roaches vs Sons of Toll..... 7:30
 A Dime A Time vs Alpha Phi Omega..... 8:30
 The Spartans vs Thi Ticklers..... 8:30
 Delta Sigma Delta Gators vs Theta Tau Toasts..... 10:30
BIERMAN 16
 Pharmacology Rod Staff vs Upward Bound..... 8:30
 Double Check vs Hello Betty..... 7:30
 Schenck's Raiders vs The Classics..... 8:30
 V Tappe Kag vs Slow and Easy..... 8:30
 Bounders vs 88'ers..... 10:30
HOCKEY
 Ben Crazy vs Ace Pucking Co..... 8:30
 Three Ring Circus vs Marisa R and R..... 8:40
 Habs vs ATO Deluxe..... 7:40
 Blue Aces vs Phi Kappa Phi North..... 8:00
 Hamel Hawks vs Rocco Raiders..... 8:15
 ATO Economy vs Sigma Chi..... 11:20
 Chi Phi vs Hamel Hawks Silver..... 11:30
NO BROOMBALL CO-OPS VOLLEYBALL NORMS GYM GYM 100 COURT 1
 18 American Authors vs Captain Jacks..... 8:00
 Museum Fares vs Squatter's Rights..... 8:45
 Sky Worms vs Composites..... 7:30
 Second Wind vs Ron's Raiders..... 8:15
 Rubber Ducks vs Meiner Deleters..... 8:00
COURT 2
 Fausto Smith Inc. vs Flying Pachelkas..... 8:45
 Hackers vs Sigma Nu Serpents..... 7:30
 Keller's Killers vs Veterans' Club..... 8:15
 Who Drinks vs Barb's Team..... 8:30
ST. PAUL GYM NORTH COURT
 One-eyed Serpents vs Wilberts..... 8:30
 Bionic Sasquatch A vs Trotters..... 7:30
 Chinese Student Assoc. vs Bailey II..... 8:30
 AGR Mean Machine vs Buck Star..... 8:30
 AGR Green vs Deep Threat..... 10:30
SOUTH COURT
 Short But Slow vs B.O.D.-4..... 8:30
 T for Tac vs Fights-Peaks..... 7:30
 Bionic Sasquatch B vs AGR Windsoars..... 8:30
 AGR Swishers vs International Softbusters..... 8:30
 Yet Med Br. vs Pipe Dreams..... 10:30
CO-OP INSURANCE WATER POLO ST. PAUL POOL
 Pulte vs Lead Ducks..... 8:30
 Fights-Peaks vs Myesus Dragon..... 8:30

Lecture-Discussion
HORACE NEWCOMB
 Television & Popular Culture
 12:15 Wed., Jan. 26
 CMU Theatre/
 Lecture Hall
ANGLES OF VISION
 American Studies
 Graduate Association

AL JOHNSON'S
JANUARY CLEARANCE
STILL IN PROGRESS

 378-1442 CLOTHIER Dinkytown

Appearing this week
SKUNK HOLLOW
 Dinner Specials 5-8 p.m.
 Mon.: Spaghetti
 Tues.: Tuna
 Wed.: Fried Chicken
 Thurs.: Omelet
 \$1.29 each!
 Next Mon. & Tues. THE WHOLE WHEAT BAND Original folk-rock-jazz group
 Total and complete cellular game room
WILLIAM'S PUB
 2907 Hennepin Ave. So. Uptown

SOCIAL WORKERS
DON'T SACRIFICE YOUR EDUCATION JUST TO GET A JOB
 Israel Offers Careers in Social Work. Immediate Positions Open.
 The State of Israel has long been a model of successful integration. Drawing its population from every country in the world quite naturally presents myriad social work problems and appreciated, challenging case work.
 Two Programs are currently being offered to people with a Hebrew background who would enter the Social Work Profession as a permanent resident of Israel.
I. Orientation Program for M.S.W. Holders
 A 7-8-month carefully planned orientation program which includes intensified Hebrew Language study, interviews will be conducted in March for MSW's who wish to continue their careers as a permanent resident of Israel.
II. Social Work Retraining
 Course specially designed for college graduates who did not major in social work. Bar Ilan University program will prepare you for a meaningful career in Israel.
 For further information on these programs, contact us immediately. Preliminary interviews will be conducted by Regional Directors.
ISRAEL ALIYAH CENTER
 75 E. Wacker Drive
 Room 2104
 Chicago, IL
 (312) 332-2709-10

YOUR DINKYTOWN TRAVEL SERVICE

americans abroad inc
 1315 S.E. 4th St. (Across from Dinkydale)
 CALL 331-7909 OR STOP IN FOR LOWEST RATES AND IMMEDIATE SERVICE ON DOMESTIC AND WORLD-WIDE TRAVEL.

THE MEDITATION CENTER
 offers the most complete program of instruction in the Science of Yoga available anywhere in the Twin Cities. Classes available include:
 Meditation
 Hatha (physical) Yoga
 Yoga Philosophy
 Yoga Psychology
 Principles of Counseling
 Vegetarian Cooking
 Yoga & Anatomy
 --plus special courses, seminars and retreats offered periodically. For a free brochure and information, call 338-8838.
 631 University Ave. NE.
 Minneapolis, MN. 55413

LITTLE FEET!
 We've got a fantastic buy for you.
 Special selection of smaller sizes all **40% OFF.**
Roots
 616 Washington Ave. S.E.
 Ph: 378-9739 Excellent Selection!
 Across from Memorial Stadium



Dave Winey

Photo by Dan Goffart

Gopher Cager Winey: Concentration required to rebound from slump

By CINDY DICKISON

Last year Dave Winey was named the most improved player on the Gopher basketball team. This season he could be a candidate for the award again, but that's not as good as it sounds.

This season, Winey picked up almost where he left off—last year—in preseason scrimmages and early games he scored and rebounded in double figures. But since the Big Ten season started he has hit a slump that approximates the slow start he had last season.

"In the fall I was playing pretty good," Winey said. "I was scoring 20 or 30 points in some scrimmages and I thought, 'This'll be my year.' I've sort of let up since then. I guess it's just a matter of concentration to get out of this slump I'm in. It's all in my head."

He added that a heavy load of classwork—17 credits—possibly has kept him from concentrating on basketball.

A natural assumption is that Winey feels competition from newcomer Kevin McHale, who has been a sixth man most of the season despite ranking consistently among the top four scorers and rebounders on the team. McHale has started the Gophers' last two games in Winey's place.

"Last season I played some decent games so I figured I probably could be starting," Winey said. He was a sixth man behind then-freshman Gary Korkowski until 11 games into the season. "But now Mac (McHale) is playing so well, and I'm not doing so well. He's got such long arms and he's been more aggressive, so he's been getting more rebounds."

Winey said an ankle injury he incurred in the Kansas State game Dec. 23, which kept him out of the Pillsbury Classic, hasn't been the reason for his problems. But coach Jim Dutcher disagrees.

"Dave had his best game against Kansas State (12 points, 10 rebounds), before he hurt his ankle," Dutcher said. "He's just had a problem regaining his momentum since then. He's slowed down and he just has to get going."

"Last year he made such a drastic improvement because he just gained confidence, and he had a lot of playing time," he continued. Korkowski's fortunes slid as fast as Winey's rose near the end of the season as Winey became an integral part of the team.

"What helped us last year was that he became such a strong rebounder, and he's just not doing that now," Dutcher said.

Winey says "sitting on the bench" last year was his best incentive to im-

prove. But Dutcher admits that there's a possibility Winey may not be working so hard because McHale is doing such a good job.

As evidenced by Winey's starting assignments and his defensive performance against Wisconsin Saturday night, there are times when he is more valuable than McHale.

"I think I run a little better than Mac," Winey said, "and I like to think I'm a pretty decent defensive player. I love the press; I didn't get much opportunity to press in high school. I really like to run, too, and pressing gives us a chance to run."

"On the break, when we get down-court, the lanes are filled because Flip (Saunders), Ray (Williams) and Goose (Osborne Lockhart) are at the wings," he added. "There's not much to do except jog along behind them and see who scores."

Winey says that criticism of his performance—which at times is harsh—doesn't bother him.

"I don't even hear it. I shut it out," he said. "My friends tell me that so-and-so said this or that, but it doesn't bother me."

"The only thing that's important is that we're winning," he concluded. "We're doing so much better than last year at this time; that's the most important thing. Anyone on the team will tell you that."

Pair of Pick and Roll players score 85 points in sub-par performance

By RICHARD MERYHEW

Jenny Rapatz and Kristen Ellisen both had sub-par shooting performances in their co-rec intramural (I-M) basketball game Monday night, but a look at the statistics would seem to prove otherwise.

Rapatz and Ellisen scored 52 and 33 points respectively to lead their team, Pick and Roll, to a 99-54 win over Party Lasts Forever. But the pair can't explain the astronomical figures.

"I was really surprised by the score," Ellisen said. "I wasn't having a very good night shooting the ball, but Jenny was hot."

"It was really shocked when they told me I had 36 points at the half," Rapatz said. "I didn't think I was shooting that much but apparently I was."

Ellisen, a University pre-nursing sophomore, said the unbalanced scoring attack was a result of the unselfish play of the team's guards.

"The guys feed us the ball underneath the basket so most of our baskets are layups," Ellisen said. "Since the guys can't go into the lane they usually take outside shots, but lately they haven't been too consistent in their outside shooting."

Under co-rec rules, men are not allowed in the free-throw lane—from the free-throw line to the baseline—on either end of the court. Field goals for men count two points, for women three.

These stipulations mean the men will be more willing to feed the women rather than drive or force up a bad shot.

"That really helps our averages," Rapatz said. "They are more willing to pass and look for the open person and this means we work more as a team. They don't usually take long shots unless we are far ahead, and even then they don't take that many shots."

"It also makes it more fun when we win because everybody has a part in it. We don't put all the pressure on the guys to do it all," she said.

But pressure is a word Pick and Roll isn't too familiar with. In two games they have won by 19 and 45 points. The only time Pick and Roll becomes acquainted with pressure is when they apply it through their tough zone defense.

"We like to play a zone defense because we are more effective in it than in a man-to-man," Ellisen said. "Since the guys can't go into the lanes anyway, the zone is probably the smartest defense to play."

"Most of the other teams seem pretty disorganized," Rapatz said. "We've tried man-to-man but the zone seems to work best for us."

Although the men don't contribute consistently in the scoring column, their presence both on and off the court is an invaluable asset to the team, according to Ellisen.

"They know what we are doing wrong and can tell us where we are weak," Ellisen said. "They can see things from the bench or on the court better than we can."

Gopher Phil Verchota prefers college as place to develop hockey skills

By MARTY DUDA

It's no secret: the dream of nearly every young hockey player is to skate for a major league professional hockey team. To achieve this dream there are a number of options available for prospects who must develop their skills.

Phil Verchota, the rugged sophomore wing for the Gopher team, is in favor of developing at the collegiate level. And his coach Herb Brooks is obviously another devoted proponent of college ranks.

Both disagree with comments made by North Star chief scout Ted O'Connor earlier this week concerning the development of pro hockey prospects. O'Connor was quoted in Sid Hartman's column as saying, "the best thing for Verchota would be for him to play 80 games in the American League next year rather than 36 in college. He needs experience," O'Connor said.

Considering the North Stars own Verchota's draft rights and given his size (6-foot-2, 205-pounds), strength and rapid improvement, those comments might be expected. Brooks, however, comes to the rescue of collegiate hockey.

"Our No. 1 function is not turning out professional hockey players," an obviously disturbed Brooks said. "If we do, that's fine. And there are many, many who have come from the colleges."

"If a kid's interested in school and hockey, then his place is here,"

Brooks continued. Even though minor league teams play more games throughout a season, Brooks says there are a number of advantages to playing college hockey. Brooks contends the hours of ice time (in practice and scrimmages) and the highly competitive WCHA league, counter the experience gained from 80 minor league games. Since the WCHA is heavily scouted and a number of college players have made the transition to professional hockey, Brooks feels the college level offers at least the same opportunities to develop young NHL prospects as the pro farm systems do.

If anyone has proof of the college-produced pro hockey stars, it's Brooks. The North Stars have taken five players from the colleges, including former Gopher star Tom Youngmans. About one-third of the players selected in last year's draft came out of the colleges, Brooks said.

Verchota agrees with Brooks' assessments, and feels he could improve as much in the WCHA as in the International or Central hockey leagues.

"I've never seen those teams play, but I can't see how it would be a step up," Verchota said Tuesday. "To give up two years here to go to the minors wouldn't be a good move. And look at the guys who step from college to the pros—guys from right here (the Gophers) and throughout the league."

Verchota, a business major and Williams Scholar, said the collegiate hockey program combined with the



Phil Verchota

Photo by Phil Hernandez

educational benefits outweigh the early defection to the pros.

Verchota is living proof that improvement at the college ranks is quite possible. He's typical of the players the scouts feast for; a big,

"physical" player who keeps getting better.

His physical, aggressive qualities stood out as a linebacker and defensive end on the football field. He was an all-stater at Duluth East and was

offered a full-ride to play football at Minnesota. Verchota said he opted for hockey because he's always played, and because of the "numbers involved." He said the opportunities to play were better with hockey considering it deals with about 26 people compared to over 100 in college football.

And since coming to Minnesota to play hockey, Verchota has progressed. In 42 games as a third and fourth line freshman forward, Verchota scored eight goals and three assists. This season Verchota has far eclipsed those stats with 10 goals and 10 assists. In the last two series Verchota has contributed four goals and two assists.

"I liked him for the same qualities of football," Brooks said. "You can't get all physical types, all fast types. You've got to have both. You have to have styles that complement each other."

And teaming Verchota with high-flying right wing T.J. Gorence and illusive centerman Tom Vannelli, Brooks has formed the Gophers' best balanced line. It has proved the most productive line this season.

"Phil has made a lot of progress," Brooks said. "His skating is improving all the time, his knowledge of the game keeps improving. He still doesn't have real good touch with the puck. But Phil's got big league potential and can go a long way if he maintains constant improvement."

Maybe right into the pros.

CLOSEOUT!

Nike Blazer \$27.95

Nike Bruin \$19.95

Body 'n Sole
327 14th Ave. S.E.
"Dinkytown"

WINTER CLEARANCE SALE!

ENTIRE STOCK OF LONG SLEEVE SHIRTS
Reg. \$13.00 to \$22.00
BUY ONE AT REG. PRICE, GET 2ND FOR JUST **\$1.00**

TURTLENECKS — \$4.88
Cotton and dacron blends. All sizes, many colors — reg. \$7.95

Entire stock of quilted vests and outerwear (including leathers) **40% OFF!**

SWEATERS & KNITS \$7.98 to \$14.88 Reg. \$15 to \$25	Selected group JEANS & DRESS SLACKS \$4.88 to \$8.88 Reg. \$15 to \$20	DENIM JUMPSUITS 20% to 40% OFF entire stock reduced
-----------------------------------------------------------------------	-----------------------------------------------------------------------------------------	---------------------------------------------------------------

Open Thursdays 'til 8 P.M.

britches
IN DINKYDALE
1314 4th St. S.E.

"THIS WAY TO EUPHORIA!
Cousin Cousine left me feeling lightheaded and euphoric as if I had just spent a glorious afternoon in the country with dear friends. ★★★★★"

— Kathleen Carroll, New York Daily News

Starts Today!

"Cousin Cousine is an invigorating film that makes one happy not only to have seen it but simply to be alive."
— Jerry Oster, N.Y. Daily News

"A delicious adult comedy about love, extramarital dalliance and unchained sensuality. An instant classic on the level of 'It Happened One Night'."
— Bruce Williamson, Playboy Magazine

"Cousin Cousine is quite possibly the most accurate representation of happy healthy sensuality I have seen on film."
— John Simon, New York Magazine

A FILM BY JEAN CHARLES TACCHIELLA

Cousin Cousine

WEEKDAYS AT 7:40 & 9:40
SAT. & SUN. AT 1:40-3:40-5:40-7:40 & 9:40

EDINA 1
50TH AND FRANCE SOUTH
926-1621

EXCLUSIVE TWIN CITY SHOWING!

PARK FREE IN LIGHTED RAMP. RELAX IN ROCKER-BACK SEATS.

EDINA 2
50TH AND FRANCE SOUTH
926-1621

A FILM BY FRANCOIS TRUFFAUT
6TH WEEK! *small change*
WEEKDAYS AT 7:20 & 9:20
SAT. & SUN. AT 1:20-3:20-5:20-7:20 & 9:20 PG

the classifieds

373-3385

Two Line Minimum
Display Classified Advertising-376-5383
• Classified Deadline:
2:30 p.m. day preceding publication.
• Cancellations:
Must be made by 2:30 p.m. of the day preceding publication.

Apts. Furnished

Lrg 1 BR-AC, cpd, off st prkg, Indry fac, on busline, close to U, no lease. \$205/mo, 425 Univ. Ave. SE. Call 379-0433 aft 5pm.
Lrg. 7BR-3 bath w/ frplc. 505 6th Ave. SE. \$600/mo 338-0660.
NEAR U of M Hosp. 1BR. Call 331-3909 or 721-4592 for appt.
Nicollet & 25th. Several 2 rm effs. (\$100), 1-3 rm w/ frplc (\$145). All avbl NOW. Refs needed. No pets. Call avbl 4:30, 823-5636.
Portland 3145 lg 1br all util, pd. avail Feb 1st \$145 825-5658 822-0341.
Portland 3145 lg. 3br all util, pd avail Feb 1st \$180 825-5658 822-0341.
1BR. 1BR. Dinkytwn. Fireplc. \$175/mo. Util. paid. 379-0879, aft. 5.
1 BR, 1BR, unfurn-5178. E River Rd. 6 blks to U of M Hosp. 331-2214.
1600 Park Ave SO. 1BR furn apt in newer bldg. Clean \$155. 874-1440, 871-8524.
2103 Bloomington BR, LR, kit., priv. bath, furn, well maintained bldg. \$135 & sec. dep. 870-8581
2214 Marshall kitchenette apt. nr. Lake St. Bridge. St. Paul. \$105/mo. Mr. Truax 644-0163.
3rd Ave. So. 17XX. Clean, quiet, efficiency in neat mansion. All util pd. Nice neighbors. \$75. 339-2816.

Apts. Unfurnished

WALK TO U OF M
Andrews hse 1 BR \$185/mo. AC. 414 7th Ave SE. Avail Feb 1. 378-0087 Dan.
Cedar Ave. S. 2616 2 bdrm in 4plex dining rm, part. cpt., no kids, no pets \$155 incl. water 722-0789.
Dbl bung 1 BR plus nursery or den. \$210 plus util. 2 1/2 mi to U. Nr bus, park & W River Rd. Garage & bsmt. Lease req. 2811 38th Avenue So. 831-5785.
EFF. APT. on Univ. Ave.-Busline, St. Paul. 20 min. to U. \$85. 338-5206.
Garfield NE 1815 2 BR Feb 1 no lease \$200 761-8839.
HAVE you heard of Steven's Court? Renovated 1 BR's and Effs modestly priced. Call Genie or Betsy 870-8555.

HAWTHORNE 1205
Lg. eff. kitch, bath, fully-cp'd, drap'd, heat pd, sec sys \$125 avail now apt 102 will show 332-1881 588-5491
HUGE lower dph 1300 sq ft. Completely rebuilt 2 BR Garage laundry. 2831 Portland \$275. 871-2966, 3465.
Lge 2BR apt unfurn \$185 avail Feb 1. 2254 Marshall. St. Paul, nr Lake St. Bridge. 378-2498.
LOWER dph, avbl. Feb. 1. 2BR close to U. Call Ellen aft. 6, 870-8310.
1818 14TH AVES.
Minutes to loop & U. 1BR & eff. now avail \$125-165. AC, pool, sec sys, off st prkg, no lease, adults. 870-0012, 871-8975.
Modern 2 bdr apt near St. Paul campus sublet until September 1. AC, cp'd no child/pet \$235. 644-2888.
1 BR apts close to St. Paul campus cp'd, AC, \$190. 644-6474.
N. St. Anthony Pk 2BR apt. quiet bldg AC, cp'd, no pets. \$205. 644-2733.
One 3 rm apt. & one 4 rm apt. avail. now nr Lake & Hennepin. 825-5055
SILVER LAKE ESTATES
2324 Silver Lane across Apache. New, lg, full cp'd, drap'd, AC, pool, util pd, spacious gar, garages 1 bdrm \$180, \$190 avail NOW. 588-5491
St. Paul 2194 Marshal stove, frig, heat, util \$200 644-1307 or 225-2861.

WALK TO WEST BANK
2 rm eff new cp'd. Pets allowed, all util pd \$145. Call Barb or Chris 338-8801.
WALK TO WEST BANK
1 rm-2 rm-3 rm apts. \$80-\$155. Pets allowed call Barb or Chris 338-8801 M-F
1100 COMAD
1br apt. close to U of M Campus off-st prkg. aft. 5:30 378-0144.
1 BR APTS. on Univ. Ave.-Busline, St. Paul. 20 min. to U \$105-125. 338-5206.
1 BR apt, 1414 6th St in Dinkytwn, AC, quiet. Avail Feb. 1 \$180 331-7766
1 Br-1/2 blk. to new law bldg. 1807 Wash, AC, cp'd, sec. bldg., pking, pets ok, 7 mo. lease. \$179. Lonna 373-5086.
1 BR's \$140-\$160. Great location on buslines. Close to U and Downtown. Clean, cp'd, efficient, apts. No lease. Call 870-8557. Ask for '1915'.
1 BR w/prkg. \$195/mo. \$100 dep. 614 Haron. 379-0128, no rent till Feb.
1327 7th St SE. 1 BR, off str prkg, AC, cp'd. Carrkr, Apt 3, or 331-2755.
15th St 307 West
OUTRICH KENWOOD
Super neat 2BR formal DR. text walls new nat wood flrs, priv entrn, overlooking pk, & tennis \$215. 874-9523, or 871-6963.
2 bks from Sammy D's 3BR apt. \$350/mo (incl. heat) Denis Villella 560-9480 & 566-6565.
2 BR apt to sublet 409 Univ. SE. Call 379-0014.
2 BR apt 1029 Raymond near St. Paul campus cp'd, AC, no pets, aft 4:30 647-1546. 8204.
22nd Ave So, 2020. Lge 1BR pool, AC, sec bldg. \$170. 339-6028, 825-8670.
23XX 11th Ave. S. 2BR 4plex \$160/mo pl. util. & deposit 722-8745.
27th Ave. S. 722 Newer 2 bdrm apt by Riverside Pk. Walk to U. New shag cpt, off st. prkg. Many other features. \$215 920-7772.
\$85/mo apt. Shr w/IM & IF. Own room. Near U. Call 331-2860.
921 E. 24th St. Adults only on bus line completely redecorated. Lrg 1 br. sec. lock. \$170/mo incl heat avbl Feb 1 Nick at 888-8876, 881-0450.

M to str 2 BDR w/ M, in Mpls near Walker Art Cr. \$152 870-1240
Nbd 1/F to shr dbl bung w/2. \$105. Our number. 835-5616 days.
Person-rmp, neat, clean, to shr, upper 2 bdrm dph w/35 yr old self employed pro. Completely furn, full use of everything. Super location, 2 blks to Lk. Calhoun, 1 1/4 to multi bus line, 4 to Lake & Henn. Rent negotiable. 824-4777.
Quiet m/f to shr 2br w/m \$110/mo 5 blks to w/abv 1Feb. 332-6783.
Shr lrg 4 BR hse w/3M, Kitch, LR, prks. 2 baths, \$100/mo. Roger. 377-2586.
Wanted 3-4 friendly m or f to find and share cp'd house. 331-9356.
1 F str 2 bdrm apt w/IF 3 blks fr camp. Clean, cp'd, ht, AC, avbl immed. 331-8455 or 331-6476.
1 F to share house w/3. Near camp, on bus, off street prkg, Indry. \$71.25, util. pd. 331-5642. AVAIL IMMED.
1 F to share lge beaut 3 BR apt with 2F on 8th St SE 331-7499.
1 F w/IF 2BR dupe So. Mpls 590/mo. 3/1/77 Dotti 823-8347, 724-5446.
1 M/F to shr hse w/2 \$27/wk incl util. wkt to U. 724-0315.
1M str, 21 plus, to shr lower duplex w/1 dbl garage w/hr, basement, on bus line, 15 min from U, \$115/mo. inc util. URGENT 522-5002 or 588-5774.
JM to shr hse w 3 M avbl immed \$60/mo incl car pool avail washer & dryer 738-0474 Robin
1 or 2 to share hse w 1 M Rndt nbrhd w/kt to IC bus line prly frshd approx \$100/m call 631-2804 aft 6pm.
1 to share 2 BR apt. w/IF St. Paul campus bus \$95 pl elec. 646-5673 aft 4.
1 to shr coed dph near dkytn \$45/mo pl util own rm 331-3581 eyes.
1-2 F shr lrg 3BR hse w/1 other. On bus line nr Lk of Isles, prly furn w/ frpl. \$220/mo split evenly incl util. Avail immed 1612 1/2 Lake. Linda 373-5560, 823-2543.
2M or F shr coed coop hse in S Mpls \$60/mo pl util call 824-3630.
2 str M 20 plus to shr hse in Como Ave. area w/2M. Own rms, \$80 & 90. util inc. Avail. 2/1, 378-1391.
3F to shr hse, own rm, nr U. \$80 plus util. 644-8809.

SPECIAL
(15 off monthly rental
rents from \$175-\$285
(less discount)
studios, 1 & 2 bedrooms
904-12 21st Ave. S.
Elevator, laundry facilities and
pool. Close to U and Downtown.
338-8229

**Luxurious 2
Bedroom Apartment**
\$315 per month
includes garage
adults only
Prospect Park 338-5229

Roommates Wanted

Christian M or F shr lge beaut hse in Mpls \$120 furn 522-1594.
CLN strat, nosmok for rmate. Pref veg prv BR. \$100. Av 1/2. 339-5830.
F to share 2br s. Mpls. apt. w/1 near bus to U/dwn 592. 825-6036.
F to shr lrg 2 BR w/3F in Chateau. Avbl now. 378-0815. Undergrd prkg.
F veg to shr hse w/3 1/2 blks from U. \$38 pl util. OPEN SPACE. 729-2468.
F wanted to share roomy coed house. 1015 13th Ave. SE. 331-5647.
F 21-26 shr 3 br dph w/2 \$90 pl util (ht pd) 377-5505 aft 6.
MALE Christian to share 2bdrm apt. in New Brighton. 15min from U. Pool, sauna \$120 per mo. 631-3624.
M/F nonsmkr 21 pl, own rm, quiet, fine hse. Garage. Lk. Isles dist, 6 & 17 buslines. Avbl immed. 823-6693 eyes.
M or F-23 plus to share lrg 2 BR apt w/1. \$85/mo. util incl. Frank-Henn. Bus ser- everywhere-874-8683.
M share 2 BR w/M in S. Mpls. Nr W Bank. Large room. \$75. 722-7082, Max.

WHY RENT? YOUR OPTION TO BUY! 13BR MOBILE HOME CALL 425-5114.
1608 E. 26th St. 2BR twbhr Feb. 1 \$140 pl. util. Adults only. Pet OK 922-9259.
2BR apt \$150 pl util 2517 16th Ave So. pet ok. 724-8417.
2 br dph, all nat. oak w/dwk, extra study room \$240 pl. util. 2319 29th Av. S. 724-9413.
2 single rms for rent in furn. hse. 774-2926 or 378-0770 aft 5:30.
2646 16th Ave. S. Attract. ap 1BR stove/frig. \$125 incl. util. Adults only Avbl. Feb. 1 922-9259, 823-0805.
3BR hse 2208 31st Ave So \$280 pl util. pet ok. 724-9413.
920 22nd Ave. NE. 2 Bedroom, lower duplex, 1 child OK, no pets. \$185. 427-2288. Available Feb. 1.

Help Wanted

Attendant-Mechanic PT afternoon, eve, & wknd hrs., exp. pref., apply in person apt. bldg. Credit on rent & pay for addl work. Interviews now. Start March, April or May. 373-2719 wkdays.
BUILDING SUPERINTENDENT
Resp. person or couple to manage sm. apt. bldg. Credit on rent & pay for addl work. Interviews now. Start March, April or May. 373-2719 wkdays.
BREMER HOUSE
855 W. 7th St. St. Paul
Job openings-resident counselors. Contract counselors receive frn rm & brd. possibly financial support for expenses. Duties incl. working shifts eyes, & wknds. Supervising residents & carrying out treatment goals. For more info call 222-4471
BREMER HOUSE
855 W. 7th St. St. Paul
Job openings-resident counselors. Contract counselors receive frn rm & brd, possibly financial support for expenses. Duties incl. working shifts eyes, & wknds. Supervising residents & carrying out treatment goals. For more info call 222-4471
COUNSELOR-Married cpl w/no children to serve as resident counselors w/ing w & teenagers. \$340/mo rm & board pl benefits. Contact Jay Angrist at 881-4156 or 825-0831.
COUNSELORS
The CRUX Group Home for Girls in LeSueur has an opening for home parents. Degree in Soc. Sci. related exper. & 1 yr. comm. Send resume: CRUX Incorp., P.O. Box 1, LeSueur, Minn. 56058. Further info call Larry Lindstrom Program Director. (612)665-6651.
Delivery person btwn 7 & 9:30 am. \$2.75/hr 15' mi own car 929-3331 Jerry
Dishwasher wd. Fulltime, Mon-Sat. Nights. Apply in person Caffe De Nichelini Baiter Square.

Rooms for Rent

AVAIL IMMED LRG RM in frat hse nr Dkytn 379-1121 Greg or Chuck
FURNISHED RM in St. Louis Park. Priv. entrnc & bath. Kitch, pvlages. On 2 buslines. \$60/mo. 929-4516.
Large newly remod slpg rm \$60/mo. No smok men 411 SE 7th Ave 378-0748.
Large newly remod. slpg rm \$60/mo. No smok. men 411 SE 7th Ave 378-0748.
1/2 of dbl. F med. or grad. student preger \$50/mo plus \$5 for off st. prkg. 528 Ontario. Call 331-1419 btwn 6 & 10 pm.
Partially furn rooms. Dinkytown shr laundry. \$65-\$75/mo. util pd.
Room & board Men only, good cook, prkg avail. \$465/qr. Call 331-9297
Sleeping room with refrig within walking dist of U. Call 331-4711.
1316 7th St SE private room for M or F \$89, all util paid. Avail Feb. 4 378-3897
16th & Univ. SE. Call Mark. 330-6841. Mon.-Fri 8-5 Weekends 545-3882.
3rd Ave. So. 17XX. Clean, quiet, efficiency in neat mansion. All util pd. Nice neighbors. \$75. 339-2816.
312 Ontario. F only. Shr kitch, bath, LR. Util pd. \$40/mo. 636-4390.
6th St SE clean rm shr kit. & shower fac. 378-0633 or 331-2829.
6th St. SE 5XX room, \$75, all util. pd. avail. immed. 789-2834.

For Rent

Brookdale area- 15 min to U, 3 BR, AC, cp'd, lg yd, aft prg, appliances, more! \$325 pl. util. 646-2477 after 5.
Eff apts. at 1030 2nd Av Neat & clean furn & unfurn. 338-4567.
Spac. 2 BR upr duplex in St. Paul, nat w/dwk & cp'd. Don. 225-0987.
STUDIO LOFT LIVING 3200 sq. ft. 2nd flr. Nds. remod. 4 blks west of Mpls. loop. 374-9518, (7-10pm. only.)

Kitchn Help: 11-5, Mon-Fri. Some Sats. Caffe Di Nichelini-Dinkytwn. 378-2000.
Language specialist will train college credits can usually be arranged call army reserve 725-5227.
LANGUAGE SPECIALIST
Will train, college credit can usually be arranged. Call the Army Reserve 725-5227.
LIFE GUARD-Swim Instr, pt, WSI or YMCA instr. pref. Eve & wknd. 588-9484.
Marketing for finance research leading to the formation of a financial institution. Self starter w/top academic & practical background. Internship or academic credit possibilities. 925-2812 Mr. Kerwin.
MODELS/NO EXP NEC/535 378-0616.
NEWSLETTER EDITOR & NEWSLETTER PRODUCER. For Minn. Int'l Stu. Assoc. Very good exper. Very little comp. Apply 235-D, CMU by noon Wed. Feb. 2. Stu. only. Info: 373-5247.
Nursing asst. eyes & wknds all shifts. LaSalle Convalescent Home 1920 LaSalle Ave. Mpls.
OVERSEAS JOBS-summer/yr. round. Europe, S. America, Australia, Asia, etc. All fields, \$900-1200 monthly. Expenses pd, sight seeing. Free info-writer: International Job Center Dept MF, Box 4490, Berkeley, Ca. 94704.
PIZZA DRIVER/DELIV PERSON.
Pizza Park, 717 1/2 E Lake nds drivers. Must be 18, have own car. PT hrs avail. Apply in person aft 5pm. Good pay, lots of travel.
PT custodial help wanted. Must live in Wayzata area. \$250/3.00/hr. 473-0234.
PT drivers for med. trans. Flex. schedules 529-7721.
PT research asst. familiar with Green Bush MN. 3732985.
RESTAURANT PT lunch help & PT eyes. & wknd. help needed, must be neat appearing & reliable no exp. nec. we will train. Apply in person after 2 pm. 1500 S. Lilac Dr.
Room near Macalester camp. in exchange for childcare, 30 min. M-F afternoons, 690-1926
Sales person, morn-aft only wanted for Paets Plus 1464 University, St. Paul.
SECRETARY RECEPTIONIST. Hours flex. 10 hr/wk. Minimum 60wpm. 647-0707.
SECRETARY RECEPTIONIST. Hours flex. 10 hr/wk. Min-60 wpm. 647-0707.
Secretary needed for local constr. co. Gen office w/ & typing 30/35 also bookng know. req. Gd benefits. Call 338-6666.
SOCIAL SERVICE OPPORTUNITY
Hse-parent couple for teen-age girls grp. hm. in Mpls. One must have ed. in soc. work or related field plus exp. w/youth. Send resumes or call Kathleen Murphy 2418 Pillsbury Ave. S. Mpls. 55404. 871-1991.
Staff position Cedar Theater PT eve & W.E. 338-3120.
SUMMER JOBS: over 200,000 in all 50 states-Your money back if you don't obtain yours thru our comprehensive catalogue. Send \$2 to: SUMCHOICE, Box 643, State College, PA, 16801. Act now for best selection.
TUTOR: Physics 1271 and/or calculus IV phone 475-1271 only 7-8pm.

Help Wanted

Attendant-Mechanic PT afternoon, eve, & wknd hrs., exp. pref., apply in person apt. bldg. Credit on rent & pay for addl work. Interviews now. Start March, April or May. 373-2719 wkdays.
BUILDING SUPERINTENDENT
Resp. person or couple to manage sm. apt. bldg. Credit on rent & pay for addl work. Interviews now. Start March, April or May. 373-2719 wkdays.
BREMER HOUSE
855 W. 7th St. St. Paul
Job openings-resident counselors. Contract counselors receive frn rm & brd. possibly financial support for expenses. Duties incl. working shifts eyes, & wknds. Supervising residents & carrying out treatment goals. For more info call 222-4471
BREMER HOUSE
855 W. 7th St. St. Paul
Job openings-resident counselors. Contract counselors receive frn rm & brd, possibly financial support for expenses. Duties incl. working shifts eyes, & wknds. Supervising residents & carrying out treatment goals. For more info call 222-4471
COUNSELOR-Married cpl w/no children to serve as resident counselors w/ing w & teenagers. \$340/mo rm & board pl benefits. Contact Jay Angrist at 881-4156 or 825-0831.
COUNSELORS
The CRUX Group Home for Girls in LeSueur has an opening for home parents. Degree in Soc. Sci. related exper. & 1 yr. comm. Send resume: CRUX Incorp., P.O. Box 1, LeSueur, Minn. 56058. Further info call Larry Lindstrom Program Director. (612)665-6651.
Delivery person btwn 7 & 9:30 am. \$2.75/hr 15' mi own car 929-3331 Jerry
Dishwasher wd. Fulltime, Mon-Sat. Nights. Apply in person Caffe De Nichelini Baiter Square.

Rooms for Rent

AVAIL IMMED LRG RM in frat hse nr Dkytn 379-1121 Greg or Chuck
FURNISHED RM in St. Louis Park. Priv. entrnc & bath. Kitch, pvlages. On 2 buslines. \$60/mo. 929-4516.
Large newly remod slpg rm \$60/mo. No smok men 411 SE 7th Ave 378-0748.
Large newly remod. slpg rm \$60/mo. No smok. men 411 SE 7th Ave 378-0748.
1/2 of dbl. F med. or grad. student preger \$50/mo plus \$5 for off st. prkg. 528 Ontario. Call 331-1419 btwn 6 & 10 pm.
Partially furn rooms. Dinkytown shr laundry. \$65-\$75/mo. util pd.
Room & board Men only, good cook, prkg avail. \$465/qr. Call 331-9297
Sleeping room with refrig within walking dist of U. Call 331-4711.
1316 7th St SE private room for M or F \$89, all util paid. Avail Feb. 4 378-3897
16th & Univ. SE. Call Mark. 330-6841. Mon.-Fri 8-5 Weekends 545-3882.
3rd Ave. So. 17XX. Clean, quiet, efficiency in neat mansion. All util pd. Nice neighbors. \$75. 339-2816.
312 Ontario. F only. Shr kitch, bath, LR. Util pd. \$40/mo. 636-4390.
6th St SE clean rm shr kit. & shower fac. 378-0633 or 331-2829.
6th St. SE 5XX room, \$75, all util. pd. avail. immed. 789-2834.

For Rent

Brookdale area- 15 min to U, 3 BR, AC, cp'd, lg yd, aft prg, appliances, more! \$325 pl. util. 646-2477 after 5.
Eff apts. at 1030 2nd Av Neat & clean furn & unfurn. 338-4567.
Spac. 2 BR upr duplex in St. Paul, nat w/dwk & cp'd. Don. 225-0987.
STUDIO LOFT LIVING 3200 sq. ft. 2nd flr. Nds. remod. 4 blks west of Mpls. loop. 374-9518, (7-10pm. only.)

WHY RENT? YOUR OPTION TO BUY! 13BR MOBILE HOME CALL 425-5114.
1608 E. 26th St. 2BR twbhr Feb. 1 \$140 pl. util. Adults only. Pet OK 922-9259.
2BR apt \$150 pl util 2517 16th Ave So. pet ok. 724-8417.
2 br dph, all nat. oak w/dwk, extra study room \$240 pl. util. 2319 29th Av. S. 724-9413.
2 single rms for rent in furn. hse. 774-2926 or 378-0770 aft 5:30.
2646 16th Ave. S. Attract. ap 1BR stove/frig. \$125 incl. util. Adults only Avbl. Feb. 1 922-9259, 823-0805.
3BR hse 2208 31st Ave So \$280 pl util. pet ok. 724-9413.
920 22nd Ave. NE. 2 Bedroom, lower duplex, 1 child OK, no pets. \$185. 427-2288. Available Feb. 1.

Help Wanted

Attendant-Mechanic PT afternoon, eve, & wknd hrs., exp. pref., apply in person apt. bldg. Credit on rent & pay for addl work. Interviews now. Start March, April or May. 373-2719 wkdays.
BUILDING SUPERINTENDENT
Resp. person or couple to manage sm. apt. bldg. Credit on rent & pay for addl work. Interviews now. Start March, April or May. 373-2719 wkdays.
BREMER HOUSE
855 W. 7th St. St. Paul
Job openings-resident counselors. Contract counselors receive frn rm & brd. possibly financial support for expenses. Duties incl. working shifts eyes, & wknds. Supervising residents & carrying out treatment goals. For more info call 222-4471
BREMER HOUSE
855 W. 7th St. St. Paul
Job openings-resident counselors. Contract counselors receive frn rm & brd, possibly financial support for expenses. Duties incl. working shifts eyes, & wknds. Supervising residents & carrying out treatment goals. For more info call 222-4471
COUNSELOR-Married cpl w/no children to serve as resident counselors w/ing w & teenagers. \$340/mo rm & board pl benefits. Contact Jay Angrist at 881-4156 or 825-0831.
COUNSELORS
The CRUX Group Home for Girls in LeSueur has an opening for home parents. Degree in Soc. Sci. related exper. & 1 yr. comm. Send resume: CRUX Incorp., P.O. Box 1, LeSueur, Minn. 56058. Further info call Larry Lindstrom Program Director. (612)665-6651.
Delivery person btwn 7 & 9:30 am. \$2.75/hr 15' mi own car 929-3331 Jerry
Dishwasher wd. Fulltime, Mon-Sat. Nights. Apply in person Caffe De Nichelini Baiter Square.

Rooms for Rent

AVAIL IMMED LRG RM in frat hse nr Dkytn 379-1121 Greg or Chuck
FURNISHED RM in St. Louis Park. Priv. entrnc & bath. Kitch, pvlages. On 2 buslines. \$60/mo. 929-4516.
Large newly remod slpg rm \$60/mo. No smok men 411 SE 7th Ave 378-0748.
Large newly remod. slpg rm \$60/mo. No smok. men 411 SE 7th Ave 378-0748.
1/2 of dbl. F med. or grad. student preger \$50/mo plus \$5 for off st. prkg. 528 Ontario. Call 331-1419 btwn 6 & 10 pm.
Partially furn rooms. Dinkytown shr laundry. \$65-\$75/mo. util pd.
Room & board Men only, good cook, prkg avail. \$465/qr. Call 331-9297
Sleeping room with refrig within walking dist of U. Call 331-4711.
1316 7th St SE private room for M or F \$89, all util paid. Avail Feb. 4 378-3897
16th & Univ. SE. Call Mark. 330-6841. Mon.-Fri 8-5 Weekends 545-3882.
3rd Ave. So. 17XX. Clean, quiet, efficiency in neat mansion. All util pd. Nice neighbors. \$75. 339-2816.
312 Ontario. F only. Shr kitch, bath, LR. Util pd. \$40/mo. 636-4390.
6th St SE clean rm shr kit. & shower fac. 378-0633 or 331-2829.
6th St. SE 5XX room, \$75, all util. pd. avail. immed. 789-2834.

For Rent

Brookdale area- 15 min to U, 3 BR, AC, cp'd, lg yd, aft prg, appliances, more! \$325 pl. util. 646-2477 after 5.
Eff apts. at 1030 2nd Av Neat & clean furn & unfurn. 338-4567.
Spac. 2 BR upr duplex in St. Paul, nat w/dwk & cp'd. Don. 225-0987.
STUDIO LOFT LIVING 3200 sq. ft. 2nd flr. Nds. remod. 4 blks west of Mpls. loop. 374-9518, (7-10pm. only.)

The MINNESOTA DAILY is responsible only for the cost of the ad for the first insertion of an ad. Each insertion of an ad and advancement is proof of publication, and it is the responsibility of the advertiser to check the correctness of each insertion. The most ad department is open until 2:30 P-M for corrections.

CAMPUS COPY SHOPPE

XEROX COPIES.....05
QUICK BINDING.....1.25
WHILE U WAIT
THESES BOOKBINDING-3 DAY RUSH
1315 4th St. SE DINKYTOWN
1800 S. WASHINGTON-W. BANK
378-1161.
Dissertations-Theses-Manuscripts, IBM Selece, pic or edit. Also math & language symbols. Accurate and experienced. Karen 429-6905.
Expert, fast. Theses & MS. 926-0071.
EXP. SEC. TYPE PAPERS 729-0755.
Exp typing in my home 926-8270.
Exp typist IBM Selectric NE Mpls. 378-5308 Mary.
EXP. typist for theses & manuscripts. Barbara Gage. 823-6748.
FAST TYPIST IBM Doc Day 537-8002.
TYPING TO SUIT YOUR NEEDS
IBM correct selectric-IBM exp. (APA, Campbell, MLA, Turabian)
Xeroxing-Cassette transcription
Sandra 890-8841.
MARTHA'S TYPING 224-2219.

RESUMES 377-9797.

RUSH JOBS OK. Typing, copying, binding of PhD's, MA's, Plan B's. LOMA 920-2943.

RUTHE 545-5414 fast.

THESES-manuscripts, medical, legal, general, mailings. All work guaranteed. Call MARIE 925-3366.

TYP EXP NR U 341-4380

Typing-Editing-Dictation. 332-0854.
Typing services 60"/pg double-spaced. 869-9310.
Typing-Spec. Thesis & Manuscript. Linda. 835-2300, 884-6877, 930-3074.
Typing 615 Oak St. 331-3034
Typ. Prompt 50 Mrs. Lebow 936-7633

THESES TYPING

Xeroxing, binding, transcript. Bank Am. Welcome 3009 Excelsior Blvd

UNIVERSITY TYPING

• Drop office 1315 SE 4th St.
• 17 years experience, Ph.D.'s & M.A.'s
• IBM Selectrics; 28 type styles
• Turabian MLA & APA
• Mini & Regular cassette transcriptions
• Repeat letters & Resumes/IBM Mag Card
For personal appointment call:
377-9797 NANCY SUMMERS

DISSERTATION SPECIALISTS

• U of M Doctorates
• Other major university theses experiences
• No white chalk, or paste cover-up used
• IBM Selectrics w/28 styles
Elsie Johnson
720 Washington S.E.
378-0089

Helpful Services

Abortion is legal in Minnesota. Now every woman has the Constitutional right to choose. Free pregnancy testing. For complete family planning information contact Midwest Health Center for Women-a non-profit organization. 333-2311.

WEDDING FLOWERS

Invitations. Save on your Wedding. Call FLOWERS BY GRETCHEEN. 823-2439.
CASSETTE COPIES Do-It-Yourself 2 U of M

TAX RETURN PREPARATION
1040-M-1, M-1HC
Loma 920-2943

TRAVEL INFO & SERVICES

Burgill, ID, Hotel ISTC 373-0180
TUNELUP \$10-15 BRAKE SPEC 320
other svcs, parts, ref. avail. Scope chik
w. TU Joseph 874-1457.
UNWANTED PREGNANCY-ABORTION
AND ALTERNATIVE REFERRALS 545-8083
VW engs rbl. \$100 labor. 645-2977.
Will do interior house painting. Reasonable rates. Experienced. 822-1510.
Will do Interior Painting 5 yrs exp vry reasonable 871-2948.

FINE HANDMADE JEWELRY DIAMONDS

Meal Nye 925-2146
MAYA MARKET
CLEARANCE SALE 10% - 25% OFF
MEXICAN SWEATERS \$25
Wool Jackets \$25 Shirts 25% off
327 14th Ave. SE DINKYTOWN

This n That

WEDDING & ENGAGEMENT RINGS
Fine handcrafted jewelry. Orig. & custom designs. Geo. Sawyer, 474-8246.

HANDMADE WEDDING BANDS-We can work together on design
James Hunt-824-2495

HARVARD BARBER STYLISTS
His & her hair care. RK Redken Cr. 604 Wash. SE. 331-3739 Elec razor repair.

STADIUM BARBERS
Now has 2 women, 3 men stylists. Also Unicare, Jhirmack, RK, & Sassoon Products 308 Oak St. across from Campus Theatre. 331-6579

MODELS \$2/HOUR

THE RED CARPET EXPERTS ARE LOOKING FOR ADVANCED SEMINAR MODELS. If your hair is at least 6" long, & you are willing to have it shaped to suit your bone structure call Phillip, 9-3pm. 333-0311.

HAIRCUTS \$1

The Red Carpet Experts need models. PW curls \$10 Highlights \$14 Call Shelly or David 333-0311.

WEDDING INVITATIONS-huge select Trad. & Contemporary-great prices & pers service-by appt. Shelly 544-5379.

For Sale

USED COLOR TV SALE!
All record. & guaran. 30 days.
MPLS. TV & ELECTRONICS
158 13th Av N.E. Mpls 333-7761

Beautiful AM-FM stereo 8-track tape player and recorder. Deluxe turntable. Two large two-way speakers. Microphones and recording tape. Warranty. Brand new in factory cartons. List price \$319 ...now only \$189 for everything. Collins Place. 861-3074.

LIQUIDATION SALE
Box springs & matt. Factory rejects. \$29 & \$39. Twin & full sz. 1613 E. Lake St. Mpls. 729-1577.

COLOR TV Console. Like new. \$125. 722-8130.

COMPLETE TWIN BED \$30; Adler manual typewriter \$30; Magnavox suite case stereo w/ radio. 978-9325.

COMSTOCK CONTRACT: Avail. immed. will negotiate. Cathy 698-6699.

DALMATIAN PUPPY AKC \$30. Needs a good home. M. 722-1987 eve.

Deluxe speaker sale. Beautiful 8" duo-tone woofer and 3" tweeter. Walnut cabinets with foam fronts. Warranty. Brand new in factory cartons. Only \$49 pair. Collins Place 861-3074.

Fiber speaker sale and many others. Fiber XPS8A speakers with controls. Suggested retail \$399 now only \$175 pair. Other speakers with 12" woofer, 5" midrange and two 3" tweeters. List price \$349 now only \$125 pair. Brand new in factory sealed cartons. Warranty. Collins Place. 861-3074.

KING-SIZE WATERBED: Cmplt. w/ walnut frame, hdbd, pedestal, liner, heater, thermostat, & beddng. Value \$600, only \$275. 926-3408.

Bamboo Blinds-Best price around measure your windows & come in Global Village 402 Cedar on the West Bank and 3037 Hennepin.

MIDDLEBROOK CONTRACT F dbl. avail immed. Sue 376-6698

MOVING: must sell! Modern walnut dining set, like new; misc easy chairs, rollaway, air cond(needs work). 645-6912.

PIONEER CONTRACT F singl Cindy avbl immed. 331-9294, 373-6265.

PIONEER contract triple suite 2F rooms avbl call 373-6152.

Port Typewriter-manual w/case. New cond-warranty. New \$135, sell for \$90/offer. Wkdays, 822-8937.

Military Historians!
Collectors!
We have imported and domestic MILITARY MINIATURES, BOOKS, and BOARD GAMES! also FANTASY RULES & GAMES!



818 West Lake Street
Mpls., Minn. 55408
823-1121

Record-Player gd. cond. \$25 373-6103 aft 3.
REVOX A77 Mark III w/Dolby & misc. Hardly used. \$850. (507)389-6791
Salle U students-Rd oak table, 6 chs, buffet-395; old mink-20. Clocks Th-Sat 2443 Henn The Finders.
TV 17" port. \$35; also 19" port. \$45 both gd. cond. 636-3575 aft. 6.
TYPEWRITER SALE \$45-up. Used & new. Kirk 617 SE 14th Ave.
Used furn, gd cond, pinball machine, hide-a-bed, desk, tables, lamps, & much more. call Mrs. Diamond 546-3441.
Used 135MM telephoto lens screw-type mount \$30 Call Jan after 4. 644-4306.
WHIRLPOOL washer & gas dryer. \$135. 36" round formica turquoise tble. w/4 oak mate chrs. \$50. dble bed inner spring mattress, metal frame & tough cord orange spread. \$35. call 545-4129.
12 string Yamaki guitar, excel. cond. Hardshell. 925-3196 after 4

THE UNPAINTED PLACE

1601 HENNEPIN 336-5200
SAVE, FINISH IT YOURSELF
Desks-Bk cases-Chairs-ETC.

Musical Notes

Armstrong IX0 fr. flute epiphone ET290 etc. guitar kustom L-3 300 watt amp. 371-8364.

AR tunable Model XA, minimal. \$30, great shape, must sacrifice. Call 376-7306 btwn 12 & 1 or 825-1441 eyes.

Cervin-Vega 26 speakers exc. cond. new \$320/pr. Now \$125/pr. 926-0815.

CLASSICAL GUITAR INSTRUCTION 331-6106.

CLASSICAL GUITAR-Yamaha G-55A w/case exc. cond. 788-5675.

Earth guitar amp 100 watt head. 2-15" spkrs padded vinyl. Lyle Elec. guitar hollow body dbl cutaway. Redwood finish. Share Pe56D mic. Ualshere 1, monitor 2-12" spkrs. 881-1634.

FLUTE Armstrong. Looks and sounds good. \$120 378-1708.

Folk guitar classics, prv. singing, picking. Lois Becker 724-5547.

For sale Peavey base amp, 2 spkz btwn. Gibson SG custom guitar walnut 3PU hedge mint phase sw \$300. 376-6128.

INVENTORY CLEARANCE SALE
Guitars-Amps-P.A.'s
Band and Orchestra Instruments
TRESTMAN MUSIC CENTERS
St. Paul-488-6697, Mpls.-866-3481
Student Discount

JVC 4 channel VL-5, 2 spd trnbl, w cartridge, ex cond. 920-9389.

KENWOOD 5400 advert spkrs. Very Res. Mike 824-3662, 925-4425.

KOTTKE

STYLE AND CLASSIC GUITAR lessons 377-9845.

Marrantz 2245 rec. \$250, Marrantz 1120 pow. amp. \$250 dtk 3.1 \$480 pr. 774-7124.

WATERBED SALE 955-2320
GUITAR SALE THIRD STONE MUSIC

Martin, Gibson, Ovation, Yamaha
Yamaha and more 935-2320

Pinnac PL12-D turntbl. Kenwood KR4400 recvr, equalizers, 880 spkrs. For sale separately or as system. 378-1156 or 489-1106.

Prof. Piano & Harpsicord tuning reasonable rates 338-1009.

Ramirez classical guitar, concert model 1974, \$1200. 645-6397.

SANSUI 1000X AM/FM recvr. Wharf-clare spkrs. Sony TC440 auto reverse reel to reel. Make offer. 339-2631.

Serious indiv. to join working country/rock band. Must play pedal steel & lead guitar & sing lead vocals. Contact Dwight 331-1613 or Dave 854-8440.

SICK STEREO EQUIPMENT? DOC AUDIO WILL CURE IT. BEST RATES 647-0479.

TENOR urgently needed for sm: pd choir at Episcopal Church in St. Paul, contact Prof. Lehmborg, 727 Soc. Sci., or call 373-2712 or 926-3530

12 segment 24 string Dulcimer. Kit made, exc cond. Aft 5, 437-3952.

2 electric guitars for sale
Gretch Viking & Guild Starfire TV. Also Vox beatle amp. 933-8471.

3 PIECE SET OF GONBOFS. Int'l outfit. New \$800, asking \$50. Used 2 hrs. Tape deck. Advert 201. New \$400 asking 300. Hardly used 459-9246.

WEDDING PHOTOGRAPHY by Carol J. Reasonable, well-done sensitive photography. For info: 537-3378.

Homes for Sale

SPACIOUS AND GRACIOUS SOUTH CENTRAL LOCATION
3 BR's, a huge living room, formal dining room & finished bsmt makes this one a must see! Fenced yard in front, privacy fence out back. French doors open onto a 3 season porch. Double garage completes it. \$34,900. Drive by 3717 Portland and then call Milton Harrison for a private showing: 645-0192 533-7417

Portfolio Realty.

WHY PAY RENT?
Three good buys- exc. financing. 676 Edmund. 3 BR, remodeled kitch, formal dining. Only \$16,000. Call Dick Pichartz. 368 Sherburn-Super Home. 2 BR expansion, frpic, formal dining. \$17,900. Call Dick Pichartz. 700 W. Central. 3 BR, alum. sided, rec rm. dbl. garage \$31,000. Call Peg Sullivan. Century 21 Carol Constant 699-1307.

Autos for Sale

'51 Ford V-8 AT. Best off over \$450. '46 pick-up trk for parts. 870-9960.

1973 Jeep CJ5, 25M, V8, snow tires, soft top, roll bar, hubs, hitch, a real beauty! \$2950. 690-3145 aft 5.

MECHANICS SPECIAL
71 Volk's Hatchback, body, tires, & so forth, good cond. needs engine. cream color. \$700. 475-8880.

'67 AMC Rebel. Good starter 87M. 6 stick. \$350 or offer. Ph. 331-5569.

Red 71 VW bus perf body excl mech cond rebuilt eng Jeff. 870-9644.

'72 Renault R12 rebilt eng & carb. 30 mi/gal. \$1450. 822-3302.

'68 VW. Good beater, good starter. \$300. Call 825-2764 eves.

71 Renault 4 dr, r. window def., AC, radials, best offer. 644-8940. aft 5.

71 Super Beetle, gas heater, 71M loaded with extras, \$1150. 341-3432.

'72 GREMLIN 6 auto, AC, radials, elect. 56M, more! Best offer 721-3695.

'72 MGB-GT coupe wtr starter. \$2300. Above average 331-5009.

'72 Saab 96. Excl cond. \$1200 or best offer. 781-6310 eves or winks.

74 VW super bug 4spd no rust one owner good tires. \$2175. 425-6904.

75 FIAT 131
2 dr, 18,000 mi. AM/FM, 5 spd, radials. Ex. cond. 925-3196 after 4 pm.

75 Gremlin low mi, 1 owner, 6cyl, manual trans, must sell 725-5222.

75 Merc Monarch 6 cyl. St trans vnl roof buckets. PS \$2995. 729-2235.

Auto Repair
App'ts avbl for 1 day service. All work guar. Import & Am. W. Bank-35W & Wash. Inter-Town Shell 333-8900.

Ski & Snow

DOWNHILL SKIS. Spalding fibreglas. 180cm. w. Solomon bndngs & ALUMINUM POLES. Used once. \$75. Nordica boots. Sz 6 1/2. Od. cond. 722-2035.

FREE Xcountry ski clinic. Every Tues & Thurs. at 7pm. Campus Bikeways, 2407 Univ. Ave. SE. 331-3845.

K2 244 190 cm. w. Sol. 555 Bind. Brand new. 437-8917.

Rosinngal Stratoflex skis 195, Solomon 444 bindings, Tomic poles. Langl standard boots, sz 10 1/2 W. 881-1634.

WANTED: X-C skis. 210cm & smaller pair. Also need boots-M's 12, W's 9 1/2. 3-prong bndgs pref. 724-5620 aft 5.

X-Country ski rentals. Lowest prices. Campus Bikeways, 2407 University Ave SE Mpls 331-3845.

Education

Spanish tutor and translations native spanish speaker 376-6011.

STUDY-WORK ADVISING

Overseas Services ISTC 40 CMU

FILM RESEARCH GRANTS

The Film Study Fund has grant money available to University of Minnesota students for research in film history and aesthetics

Applications available now for Spring awards 373-4847
328 Weebrook Hall

Rides Wanted

FROM U TO RICHFIELD
M-W, 9:00pm. Will pay. Jane, 861-4373.

Ride wanted to Boulder Colo area after Feb 2 call Cheryl 699-5685.

To Madison WI Jan 28, willing to share gas. Call 376-6514 Gwen.

Passengers Wanted

Calif. F pref. 1 way, leave Jan 30, share expenses. Debbie 935-9454

CARS to leave at once to CA, NY, Wisc., Wash, E coast-Rd trips to St. Louis & Baltimore. 935-3324.

Rider wanted to S. Calif share expenses leave Jan 29th Becky 881-3196.

Lost and Found

500 REWARD
for info leading to the arrest and conviction of person stealing antique time clock of First Street Station. 339-3339. Jim.

LOST: Brown M puppy near 26th St. - Bloom. Ave. So. Jan 20. 722-4163.

LOST: pair of hiking boots, size 9 Jan 24 on West Bank. 866-3543.

LOST: silver necklace ST. Paul Campus 227-2115 REWARD!!!

Wanted

I used chemistry set suitable for detective work. Call S. Holms 333-8883.

CASH!
FOR STEREO EQUIPMENT WORKING OR NOT. 377-1772

IMMEDIATE CAPITAL NEEDED.
The faculty owned Nagari Press is expanding. 12% interest on loans of \$100 or more. Paul Staneslow 373-7827 or 484-6637.

MPIRG State office needs 1 refig, typewriters, lamps. Age no problem as long as they work. 376-7554.

PARKING SPACE NEAR DINKY-TOWN WANTED. 925-2820.

REWARD
Wanted junk repairable cars and trucks (cp \$3 late models also foreign cars. Any condition 498-7676, 522-1972 anytime.

WANT RAILROAD POCKET WATCHES, HUNTING CASES (HOWARD) & PARTS 753-1595.

Want to buy sport wheels for Datsun pickup truck. will trade wheels 644-0016. \$10-2500 788-4765

JUNK CARS & TRUNKS
4 tickets to Illinois basketball game. Larry 331-7040.

Miscellaneous
Free puppy, 7 mo old F cocker terrier. Affectionate partly trained. 331-9111.

NEED tempory home for 2F dogs. Will pay \$50/mo. pl. food. Joyce at 825-0814 eves.

YOU SHOULD know about us if you think creatively & need X-tra S. call Cube 646-8655.

HAWAII JAMAICA
Sign up now
40 CMU
373-0180

TRAVEL FAIR
Wed., Jan. 26 10-3 P.M.
329 Coffman Union
Free Info • Prizes
40 CMU
373-0180

SUMMER FLIGHTS TO EUROPE
Plan early for summer Europe travel. Ask about our S.E. Asia, Turkey and Europe study programs. We're taking sign-ups now.
40 CMU
373-0180

Announcements
Anyone knowing the whereabouts of Dr. Moriarty please contact 333-8883.
DAYTONA BEACH \$169
Call 933-1112 after 6.
EUROPE CHARTERS
Sees Now ISTC 40 Coffman
EUROPE/WORLDWIDE academic discounts yr. round. SATA. 4228 First, Tucker Ga. 30084 (800) 241-9082.
SKI VAIL & STEAMBOAT
Feb. & Mar. 339-9000.
FREE CLIMBING MOVIE "The Naked Edge" & "The Grand Canyon" tonite 8pm at Midwest Mountaineering 309 Cedar.
GIANT SCREEN TV at CMU 9 am to closing daily thru Jan. 30, 2nd floor, men's lounge. Everyone welcome. See ABC's "ROOTS" nightly and buy the book at a 20% discount this week at MSA Bookstore.

THEOLOGY OF LIFE
group
Explore what your faith says to you about death, relationships, lifestyles. Mon 3:30-5pm. 331-1768.
HS Design Ed. Dept needs men & women models for exper. stylists workshop at Moler's Barber School, 1411 Nicollet Ave. Contact Phil Mullen at 871-3754.

BAHAMAS-NASSAU \$319
JET TRANS & OCEANFRONT HOTEL, 8 SUNNY DAYS-7 CARIBBEAN NIGHTS. March 19-26. For more info call Sue, 331-5986.

MOVIES
Marx Bros cuts, Charlie Chaplin, Keystone Cops, Cartoons plus hilarious old educational movies.
THIS WEEKEND
Fri & Sat, Jan 28&29, 7:15 & 9:30
MAYO AUD. 99' donation
ACAPULCO \$379
Mar. 19. The Travel Co. 339-9000.
Self-defense for men and women. Adult ed. class M-U HS. (376-4505) 8 Thurs, 7-9pm., starts Jan 27, \$15.
SKATE EXCHANGE
Bauer, Oberhamer, Hyde, Aerlyffe Roller Skates too. Penn Cycles Rich. 866-7540 Bloom. 888-1427 Open eves.
SOUTHERN AFRICAN QUESTION:
Talks & Disc. by Profs. A. Isaacman, L. Kaba, A. Nimitz. 2:15 Fri, Jan 28 Rm. 325 & 326 CMU. Sponsored by Mn. Int. Stud. Assoc. All Am & for. stud. welcome.

THE WEST BANK UNION
is looking for students interested in shaping West Bank activities by filling a vacancy in the W.B.U. Student Board.
If interested stop by 110 Anderson Hall or call 373-5058. Application deadline January 28.

NEW YORK \$145.
The Travel Company 339-9000.
DON'T RENT A CAR IN EUROPE
Use the Renault guaranteed re-purchase plan & drive a new car in Europe for less than a rental. Call Paul Eckelbert for details. Caroussel Porsche Audi Renault 544-9591.

MEXICO CITY MAR.20
\$359 airfare, hotel, plus. 339-9000.

THINKING OF SKIING? JOIN THE U OF M SKI CLUB AND SKI SUN VALLEY MARCH 19-27. \$197 INCLUDES EVERYTHING BUT FOOD. SIGN UP TODAY!

Personals
Are you lost in a London fog? Call S. Holms 333-8883.
Bryce
Today, this one's on the house. Homer's Girls Happy Birthday
B. You are too needed!! Love Sie

Monday night was GREAT! We "Could've Danced All Night" but we're just "Getting Accustomed to Your Face". Let's fire up for GREEK WEEK, SAE'S.
Happy Belated Birthday, Junior! From a former camper, future friend.
Stud! You and mueller did a good job on popsize toes...but revenge is sweet may your necks beware, especially Klets. Love & hickys. The girls desi.

THETA LADIES- We know you girls are nuts & like to have a ball. With naked ladies we've just begun, though this week we will have more fun. We are so glad things were so hot, we know we all cannot do. Brothers of Psi U.
To whom it concerns: Please return our sign. No questions asked. BETA OF CLOVIA.

Lobby With MPIRG
Energy Conservation, Tenants' Rights, Utility Regulation, Consumer Protection, Students' Rights
MANY STUDENTS NEEDED! minimal time required.
Call 376-7857

ACME CINEMA PRESENTS
AT LONG LAST
LOVE
starring Bert Reynolds & Cybil Sheppard
Music by Cole Porter
Wed., Jan. 26
2:30 & 7:30
50'
St. Paul Student Center Ballroom

The Board of Student Publications of the University of Minnesota
is seeking applicants to fill four board vacancies: two student and two civil service positions.
Applications should be directed to Leslie Schroeder or brought to 30 Johnston Hall
Hours: Thursday 8:30-4:30
Applications will close noon, Jan 28

TODAY
CMU Theatre
7:30 P.M.
Tickets: \$1.50 U of M I.D.
\$2.00 others
Discussion:
M. Lowry
German Dept.

FREE JAPANESE FILMS
Wed. 6 P.M. Jan. 26
2nd of 5 films
Nicholson Hall 45
UGETSU
96 min. black and white Venice Film Festival winner, photographed with the mystical beauty of a classic Japanese painting. Ugetsu tells a 16th century ghostly legend of two peasant neighbors. The two men leave their families, one to become wealthy in the city, the other to fulfill his ambition to become a samurai warrior. The performance is reminiscent of the traditional Japanese theater with its symbolic style.
by Kenji Mizoguchi.
Japanese with English subtitles
Sponsored by:
Asian American Student Center

Join Olga and Carl to
EXPLORE SWEDEN
with the Swedish Consulate General, a film, folk dancing, literature on Sweden and special desserts.
Third in a series of Scandinavian Days.
Free
TODAY
12-1:30 P.M.
St. Paul Student Center Ballroom

THE WEST BANK UNION
is looking for students interested in shaping West Bank activities by filling a vacancy in the W.B.U. Student Board.
If interested stop by 110 Anderson Hall or call 373-5058. Application deadline January 28.

NEW YORK \$145.
The Travel Company 339-9000.
DON'T RENT A CAR IN EUROPE
Use the Renault guaranteed re-purchase plan & drive a new car in Europe for less than a rental. Call Paul Eckelbert for details. Caroussel Porsche Audi Renault 544-9591.

MEXICO CITY MAR.20
\$359 airfare, hotel, plus. 339-9000.

HON: A month of loneliness and anxiety have elapsed. Now I battle myself, warding conclusions, and ponder a communication effect. Feedback or silence will suffice. I'll always hold you in me, minus a key.
O-Leo! & I won't say margarita. LB & RB miss u so don't forget Fri Luvya! CMQ.
SHERRI STURZL phenomenal Sherry & Sara. Call Peg 729-4146 Kisses.
Small plane ride to telemark w/and share exp. Brian 224-5488.

MICHELLE POLLY CINDY
We LOVED you all 49 hours! We could have never gone ALL THE WAY without every one of us. SAMMY is waiting for SAT NITE, we're all set for a champagne flight STEVE JOHN MIKE

TODAY-Literature and the Other Arts
"Television and Literature"
Horace Newcomb
305 Lind Hall, 3:15 P.M.

CEDAR 338-4403
Cedar at River side
Jack Nicholson
"THE KING OF MARVIN GARDENS"
once at 7:30
- plus -
"THE PASSENGER"
9:25

CUPE UNION
ACU-TOURNAMENTS
BRIDGE-TODAY
7 p.m., West Bank Union Gallery
Lower Concourse, Aud. Classroom Bldg.
BILLIARDS-TODAY
7 p.m., Coffman Recreation/Outings Center
Entry fee: \$2/person
Info: 373-7800 or 376-1183

THE MAN WHO KNEW TOO MUCH
Directed by Alfred Hitchcock 1934.
This was Hitchcock's greatest British box office success.
Thursday, Jan. 27
2:15 & 7:15
310 Anderson Hall
FREE ADMISSION

The System



Marantz receiver

The Marantz 2230 has a full 30 watts RMS per channel from 20 Hz to 20 kHz at 8 ohms with no more than 0.3% THD. Plus, hi and lo filters, balanced flywheel tuning, front panel dubbing, triple tone controls and a 3 year factory warranty!

Utah speakers

Utah's newest speaker system the DX-120A looks as good as it sounds. A 12" woofer, 1 1/2" voice coil, 8" compression horn midrange, two 3" tweeters, brilliance and presence controls for high and mids front panel mounted, a frequency response of 25/20,000 Hz, maximum power of 60 watts RMS and a 5 year parts and labor warranty make this a system that speaks your language.



Receiver shown in optional walnut cabinet.

The Deal

1 MARANTZ 2230 RECEIVER	\$399.95
2 UTAH DX-120A SPEAKERS	\$339.90
TOTAL RETAIL VALUE	\$739.85

Your Price \$399

Concord BD-1000 turntable

Manual, belt drive cast turntable; balanced "S" type tonearm; synchronous motor; anti-skating; and viscous damped cueing. Complete with base and dust cover.



Retail Value \$109.95
YOUR PRICE

\$49.95



FT-407

SANYO Under-dash stereo cassette player with FM stereo radio

- Sensitive FM stereo radio with integrated circuits.
- Sanyo's famous reliable, rugged tape transport mechanism.
- Locking fast forward and rewind.
- Automatic eject at end of tape.
- Local/distance switch for radio.
- Play and stereo indicator lights.
- Left and right volume controls.
- Slide in/slide out bracket included.

Retail Value \$129.95
YOUR PRICE \$89.88

Fuji FX C-90 cassettes

Low noise, high output with lower distortion. The best tape we sell!

Retail Value \$7.05 each
YOUR PRICE

\$2.99 ea.



THE AUDIO WAREHOUSE

Limited Quantities FINANCING AVAILABLE

BOTH STORES OPEN MON. THRU SAT. 10-5
DOWNTOWN MON. TIL 8 - EDINA THURS. TIL 9

Mellow EDINA

4936 France Ave. So. 927-7741

Way DOWNTOWN

Free Parking (if you can find us)

251 Portland Ave. So. 332-5358