

minnesota daily

Wednesday, January 16, 1980 Volume 81, Number 92 Minneapolis-St. Paul, Minnesota

Embattled farmers won't be 'replaced by dump'

Editor's note: Approximately 85 percent of the things we use ultimately end up as garbage. It doesn't come cheap; solid waste handling currently accounts for the second largest metropolitan expenditure.

The Twin Cities region buries most of its solid wastes in local landfills—seemingly a simple solution to the problem. But the area is running out of space and the practice can be dangerous.

A three-part series, continuing today, presents one community's battle with the county as it attempts to stop a landfill siting; part three will discuss alternative approaches to solid waste management.

By Sheryl Larson

Hennepin County was looking for a landfill to house its garbage, so someone made a suggestion—do it the American way. Build it bigger, cheaper and put it as far away from our noses as possible.

This solution was proposed at a hearing held last May to offer county residents a chance to respond to a slate of nine possible landfill sites. Objections to all sites were consistently raised. And, during testimony, one resident suggested the county look for a single, large piece of land—instead of eventually siting several smaller ones—to meet the county's projected landfill demands through the century.

County officials obliged and went looking for what the citizens termed a "Megasite." Last August, after an elimination round, a megasite in the city of Independence was added to the remaining slate of four candidates. Postcard pretty, this 840-acre tract of prime agricultural land is owned by dairy farmers whose herds yielded 3.25 million quarts of milk from January 1978 to August 1979, according to Mid-America Dairymen Inc.

On Aug. 9, dairy farmer Kermit Dietrich walked to County Road 11 to pick up the day's mail. Tucked between a postcard from his daughter and an issue of Hoard's Dairymen magazine was a letter from the Hennepin County Department of Environment and Energy. It carried a message Dietrich will never forget because it abruptly changed his life.

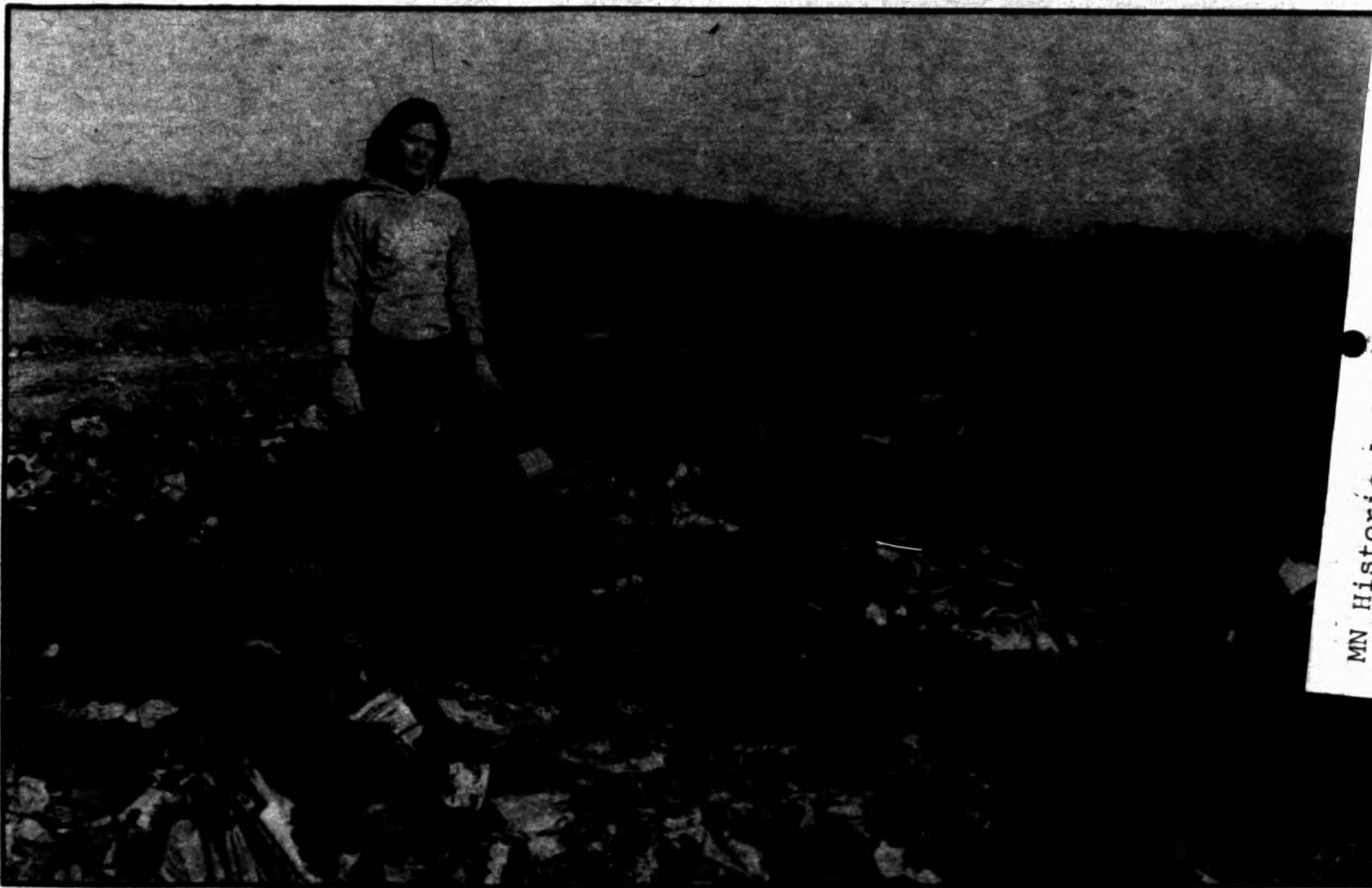
The letter simply said that his 80-acre farm, along with the property of 18 other Independence landowners, was being considered by the county as a possible landfill site.

Too much to ask

Dietrich responded, "I'm not going to be replaced by a dump," and the battle began.

The 18 landowners met and agreed to mutually fight for their land. One farmer explained, "Maybe we could accept a domed stadium, but we can't accept all of this county's garbage. That's too much to ask."

The landowners quickly formed Preserve Green Acres Inc. and began holding regular meetings to discuss their plight and plan their strategy.



University student Chris Dietrich at a landfill similar to the one proposed for her parents' property near Independence, Minn.

They soon flooded local newspapers with letters to the editor that advocated resource recovery instead of landfilling. They wrote and talked to county officials, trying to persuade them to eliminate the Independence site. They also promptly gathered 1,300 signatures on a petition that opposed any landfill in northwestern Hennepin County. And, to be sure of



their legal rights, the landowners hired an environmental attorney to advise them and, if necessary, to defend their land in court.

"The best argument against the proposed megasite—against a megasite in general—is that it is a disincentive to resource recovery," said Green Acres' attorney, Charles Dayton.

'Us against them,' farmers fighting to save way of life

Like neighbor Kermit Dietrich, Mel Greehling is a third generation farmer. So is his wife, Audrey, who married the guy next door.

Mel and Audrey Greehling are two of the 18 Independence landowners who last August received letters from Hennepin County informing them that their land was being considered as a site for an 840-acre landfill.

"At first, I laughed," Audrey said. "Then, I felt fear and anger. It was us against them."

"When you farm, those fields are a part of you. The farmer lives with the land and weather. It is our whole life—it's more than just kicking us off our farm. It's taking away our way of life," Audrey said.

The Greehlings are active members

of Preserve Green Acres Inc., a group the 18 landowners formed to eliminate consideration of the Independence site. They said they feel Green Acres is "causing quite a stir in the county."

In addition to several other potential legal blocks, a landfill siting would violate a local zoning ordinance. Adopted in 1966, it prohibits "the dumping of garbage on public or private property in the City of Independence."

As state law now reads, the county cannot legally site a landfill in Independence. But a bill is expected to be introduced in the upcoming legislative session which would provide a mechanism for the county to eventually override local resistance to a landfill.

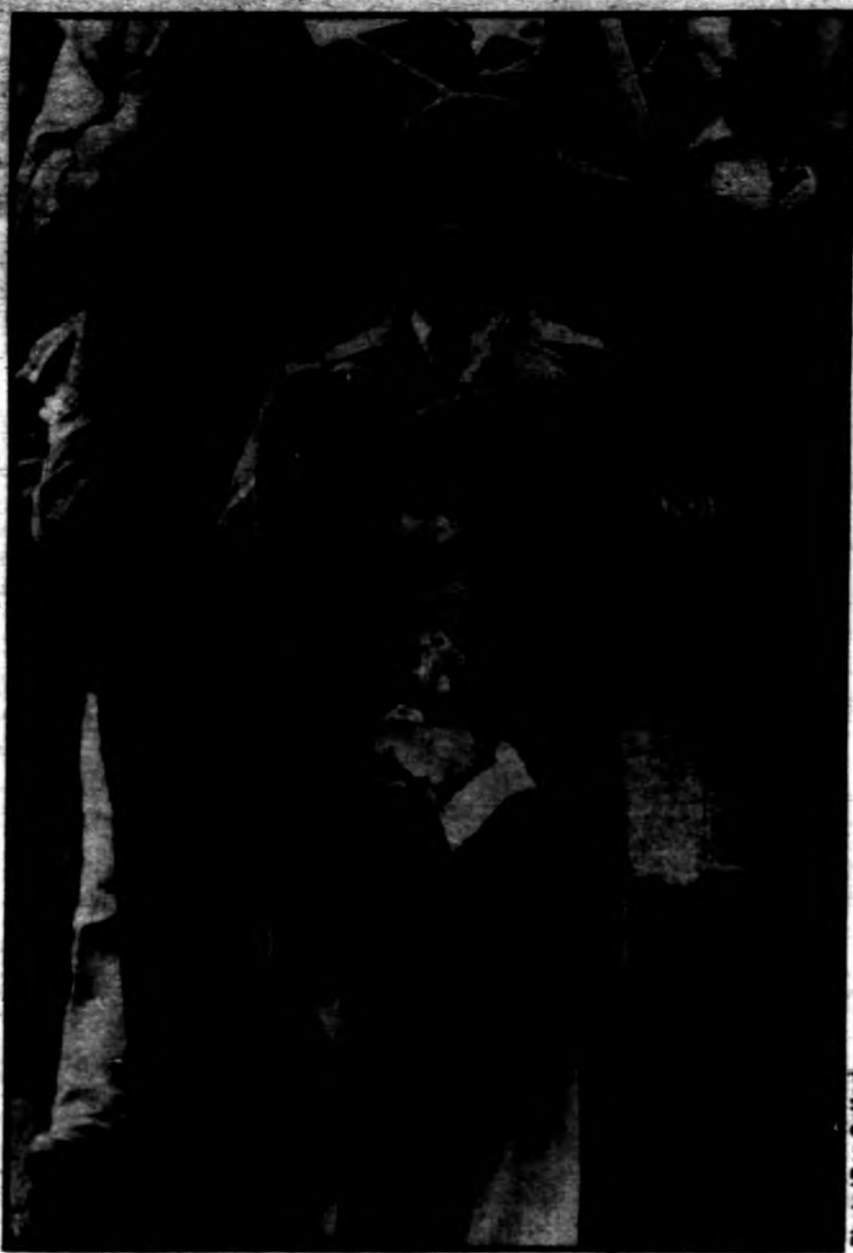
Stopping a landfill siting has become a family affair for most of the landowners—including the Dietrichs. Kermit's wife and three daughters have joined in battle. Chris Dietrich,

Megasite to 4

"I don't think county officials realized they would get such a reaction," Mel said. "It sure has changed our life. All we do is go to meetings."

And, since garbage has assumed a front billing in their lives, they said they have changed the way they treat their own trash. They now recycle everything they can—grass, metal and paper—and what's left is buried in their own, private landfill or compost heap.

"The garbage man stopped coming awhile ago—we never had anything for him," Mel said.



Capitol march honors King

An estimated 600 people marched to the state capitol Tuesday to honor Dr. Martin Luther King Jr. on what would have been the black civil rights leader's 51st birthday.

The purpose of the march was twofold: to honor King and to show support for having King's birthdate declared a legal national holiday, which Congress has failed to do.

At the end of the march participants rallied on the capitol steps to hear a tribute to King delivered by Rev. Stanley R. King (no relation) of St. Paul and a citizen proclamation to

declare the date a holiday.

"We've been denied a national holiday by Congress," said Rev. James Battle of St. Paul, one of the march's organizers and president of the Black Ministerial Alliance.

Marchers started out at about noon from two gathering points in St. Paul and converged on the capitol about 1:50 p.m. for the half-hour rally.

Sponsors of the march were the Black Ministerial Alliances of Minneapolis and St. Paul and the Black Unity and Futurism Conference.

MN Historical Society
690 Cedar
St Paul, MN 55101

Photo/Sтивен Green

Photo/Dan Seifert

news digest

Compiled from the Associated Press

International

Afghan rebels disrupt roads; Soviets slam U.N.

Anti-communist rebels, reportedly fighting a losing battle against a modern Soviet force, claimed Tuesday to be disrupting movement along three roads into Kabul, forcing the Soviets to airlift troop reinforcements and supplies into the Afghan capital, a Pakistani newspaper reported.

On the political front, the Soviets, angered by a U.N. General Assembly resolution calling for withdrawal of their troops from Afghanistan, denounced the action as intervention in Afghanistan's affairs.

Western diplomats in Kabul have said that the Russian troops have clamped down to a large degree on the Moslem rebellion and there was little fighting anywhere. Other sources have said the rebels continue to resist the Soviets in the northeastern province of Badakhshan and in Paktia, near the Pakistani border. But on Monday, hundreds of Soviet army trucks rolled northward through Badakhshan with only a light guard.

Two Soviet motorized divisions numbering some 25,000 men have moved into western Afghanistan, in the Herat area 75 to 100 miles from the Iranian border, but there is no indication Iran's oilfields are threatened, the State Department said Tuesday. Iran's oil region is around the Persian Gulf, some 750 miles from the Afghanistan border near Herat. The Soviet Union's own border with Iran is nearly 200 miles closer to the main oilfields.

Meanwhile, U.S. moves to help the thousands of Afghan refugees fleeing across the border into Pakistan got under way Tuesday with arrangements by the U.S. Agency for International Development to ship tons of wheat, oil and milk.

Yankee press ousted to 'cool' Iran militants

Tehran—Iran on Tuesday ordered American reporters to leave the country by midnight Friday in a move one Iranian official said could help ease the embassy crisis by "lowering the temperature" and taking pressure off the militants who hold the American hostages.

The United States, meanwhile, moved to build up pressure on the Iranians by rounding up support from the NATO allies for economic sanctions against Iran. The Carter administration also pressed its court action against the Iranians. Lawyers for the U.S. government formally presented a lengthy legal brief on its case against Iran before the International Court of Justice in The Hague, Netherlands. The court is the main legal arm of the United Nations.

The Iranian government of Ayatollah Ruhollah Khomeini accused the 100 American journalists, part of a 300-member international press corps, of "biased reporting" on the Iranian situation. It said French, British and West German journalists and those from other countries could stay for the time being. The non-American journalists, Sadegh said, can look at Iran "in a more fair way" since the hostages are not their fellow countrymen.

National

Prosecutor: Ford 'chose profit over human life'

Winamac, Ind.—Ford Motor Co. "deliberately chose profit over human life" in selling its Pinto automobiles while knowing that the car's fuel system was unsafe, a prosecutor said Tuesday in opening arguments for the automaker's criminal liability trial. Prosecutor Michael A. Cosentino told a Pulaski Circuit Court jury that Ford refused to alter the Pinto fuel system "for the sole reason that they would save money by not doing so." The Pinto was designed, manufactured and sold on a "\$2,000, 2,000-pound basis . . . with one thing in mind—profit," he said.

He said tests by Ford engineers revealed that, for \$6 per vehicle, Pintos could be equipped with a rubber bladder inside the fuel tank that would prevent fuel leakage in rear-end collisions, but that Ford management rejected that as "too costly." Opening arguments before the jury of seven men and five women came after a day and a half of preliminary legal skirmishing. Earlier Tuesday, the prosecution lost an effort to present photographs and other evidence about the victims of the Pinto crash that triggered the trial, the first criminal prosecution of a manufacturer in a product defects case.

Current events may bode ill for Kennedy

Washington—Two new investigative reports on Chappaquiddick have raised fresh questions about whether Sen. Edward Kennedy told the truth

about the events surrounding his automobile accident a decade ago, in which Mary Jo Kopechne was killed. As he has almost since the accident on July 18, 1969, Kennedy stuck to his version of the tragedy Tuesday, and said one of the new reports—published by The Washington Star—"is wrong, is wrong, is dead wrong."

The newspaper said that government data on currents actually were obsolete at the time of the accident and that Kennedy would have swept inland, rather than out to sea as he testified. The rebirth of the Chappaquiddick issue came when the Kennedy camp was on an emotional high over the endorsement the senator was about to win from Douglas Fraser, United Auto Workers union president.

11 confess to bribery in GSA scandal

Washington—Evidence of corruption in the General Services Administration mounted Tuesday as 11 persons agreed to plead guilty here to bribery and conspiracy charges in a scandal that has spread to 15 states and Washington, D.C. The plea agreements involve \$415,000 in fraud against the government and \$120,000 in bribes and kickbacks to federal workers. They bring to 119 the number of indictments nationwide against contractors and government employees, most of whom work for the GSA—the government's office supply and building maintenance agency.

The latest indication of corruption in the huge agency came Monday when a GSA draft audit was revealed showing that the agency spent \$500,000 for office space it never used in a New York City building. Sources said that audit and similar ones, details of which they did not reveal, were evidence of continued mismanagement in the agency.

Regional

Lawyers accused in Dalkon shield cases

Two more Minneapolis attorneys have been accused of improper conduct in connection with a large number of lawsuits surrounding the Dalkon Shield contraceptive. A. H. Robins Co. of Richmond, Va., the maker of the intrauterine device, has been the target of hundreds of suits in recent years claiming that the shield led to infections and hysterectomies. It was taken off the market after only three years.

Robert Appert and Gerald Pyle, partners in a Minneapolis law firm, are being brought before the Minnesota Supreme Court on charges that they may have used improper methods to drum up clients for lawsuits. Two other Minneapolis attorneys, Norman Perl and Richard Hunegs, are being sued by one of their clients claiming they schemed with an insurance adjuster to settle Dalkon claims out of court and divide the money from legal fees.

Crude tube lubs woods

State officials are concerned about "serious problems" with a crude oil pipeline that has fractured for the fourth time in the past three years and which spilled some 500,000 gallons of oil in the latest spill. The Minnesota Pipe Line Company's line from Clearbrook, Minn., to Minneapolis-St. Paul burst last Friday about 10 miles west of Princeton. Minnesota Pollution Control Agency Geologist John Aho said Tuesday that major remedial action may be required in the line, which he said is 26 years old.

The line carries Canadian and North Dakota crude. Aho said the latest break was the largest in terms of spill. The pipe broke about 20 feet along a welded seam. It was replaced Sunday and the line was restored, but not before more than 11,840 barrels of oil leaked onto the ground and some soaked into the soil.

elmo



Early warning

Elmo cracked his ass on the ice. While he's convalescing we'll just say it'll be cloudy, rainy, windy and about 37 degrees today with not much sun showing at all.

minnesota
daily

The Minnesota Daily is an independent student-written and student-managed newspaper for the Twin Cities campus of the University of Minnesota. Opinions expressed herein are not necessarily those of the student body, faculty or the University administration. Published daily, Mon.-Fri., during the regular school year and three times weekly through summer session by the Board of Student Publications, Jim Clark president.

Complaints concerning Daily coverage, after first being brought to the publication editors, may be referred to the Board of Student Publications, c/o Jim Clark, President, 240 Coffman Memorial Union, University of Minnesota, Minneapolis, MN 55455.

Daily Editorial office: 10 Murphy Hall, 206 Church St. SE, Minneapolis 55455. Phone: (612) 373-3381. Business office: 720 Washington Av. SE, Minneapolis 55414. Business phone: 373-3385 (subscriptions and classified advertising). Classified display advertising, Room 363, (612) 376-5585. Display advertising office: Room 349, (612) 376-5550. Subscription rates (in advance): \$8.00 per quarter (50 issues); \$24 per year (180 issues). Second class postage paid at Minneapolis, MN and at Shakopee, MN.

Editor	Kate Stanley
Managing Editor	Jeff Goldberg
Editorial Page Editor	Don Clark
News Director	Tom Minehart
News Editor	Daniel Barnes
Asst. News Editor	Denise Kofala
Community Editor	Shary Larson
University Editor	Barb Kucera
Sports Editor	Cindy Dickson
Photo Editor	Theresa Aubin Ahrens
Asst. Photo Editor	Jeff Wheeler
Copy Editor	Dorothy Knutson
Wire/International Editor	Tom Minehart
Opinions Editor	Michael Douglas
Letters Editor	Paul Fishman
Art Director	Sue Kruskopf
Asst. Art Director	John Kavanaugh
Complement Editor	Konnie LeMay
Ethnic Perspectives Editor	Frank Wilderson III
Wordsworth Editor	Christine Mack Gordon
Asst. Wordsworth Editor	Barbara Prasley Noble
Business Manager	Ronald A. Willis
Asst. Business Manager	Ellen Morse
Controller	John Stolka
Operations Manager	John Fung
Production Manager	Mary E. Buscher
Adv. Production Manager	Julia Churchill
Adv. Manager	Al Boyce
Asst. Adv. Mgr.	John Gross
Adv. Creative Director	Dawn Madgog
Classified Adv. Manager	Phil Rustad
Asst. Classified Manager	Bill Norton

 **Minnesota Dance Theatre** opens the **ARTISTS' SERIES** in **The Theatre** St. Paul Student Center **Tuesday, January 22, 1980, 8:00 PM**

Followed by Res Musica, February 5; St. Paul Chamber Orchestra's Chamber Arts Consort, February 19; Illusion Theater, March 11.

Reception for audience and artists follows each show.
Individual Tickets: \$3.75/students & seniors, \$5.75/others
All Four Performances: \$12.00/students & seniors, \$19.00/others
Tickets available in Program Office, Lower Level, Student Center, 373-1051

This program is supported jointly by a grant from the Minnesota State Arts Board from funds appropriated by the Minnesota State Legislature, and a grant from the National Endowment for the Arts.

THE EARLY BIRD 

PREPARE FOR:
MEDICAL COLLEGE ADMISSION TEST

- Permanent Centers open days, evenings and weekends.
- Low hourly cost. Dedicated full-time staff.
- Complete TEST-n-TAPE facilities for review of class lessons and supplementary materials.
- Small classes taught by skilled instructors.
- Voluminous home-study materials constantly updated by researchers expert in their field.
- Opportunity to transfer to and continue study at any of our over 80 centers.

 Call Days, Evenings & Weekends
378-9191

TEST PREPARATION SPECIALISTS SINCE 1938
With Centers in More Than 80 Major U.S. Cities Puerto Rico, Toronto Canada & Lugano, Switzerland
For information about other centers OUTSIDE N.Y. STATE CALL TOLL FREE 800-223-1782

Bridge scramble gives bursar robbers 3, U police 0

By Chris Ison

When a white male wearing a green army jacket and a blue stocking cap entered the West Bank bursar's office and handed Stephanie Wiebe a note—"This is a hold-up, hand over all your money, I have a pistol"—there was really nothing she could do . . . except hand it over.

And when she pulled the bills from the drawer, setting off the automatic alarm at the University Police Department, there was nothing police could do except radio to a patrol unit, which had to drive across the Washington Av. bridge to Cedar Av. and back down Washington Av. to the bursar's office.

By then, it was too late.

The robber got away with an undisclosed amount of cash and police have no leads.

The Jan. 2 robbery was the third sustained by the bursar in two years; the others, unsolved, occurred at Williamson Hall on Aug. 3, 1978 and at Coffey Hall in St. Paul on June 26,

1979. That statistic does not disturb University police, however.

Compared to the 69 bank robberies in Minneapolis in 1979, the number of robberies around here has been pretty low, said Lt. Claude Jarvis, University police officer in charge of University security.

The University bursars handle cash much like banks do. "We're really in the same category," said Lt. Wayne M. Boysen. "The bursars have the same susceptibility as banks."

Yet, the security systems are different.

The Marquette National Bank, 718 Washington Av. SE, has a camera at each teller and one at each entrance. The bank also has silent alarms which inform Minneapolis police as soon as a robbery occurs, and a guard is stationed in the bank at all times.

The three University bursars have silent alarms monitored by the University Police, but no guards on duty.

And only the Williamson Hall bursar is equipped with a camera. When that bursar was robbed in 1978, the picture produced of the suspect was hardly usable, police said.

"The type of camera used is not the best type. The picture was of such poor quality that you really couldn't get a positive description," Cpt. William A. House said.

The absence of cameras in the other bursar robberies has hindered police in the investigations, House said.

Although the FBI is not authorized to investigate because the bursars are not federally insured, House said, working with them would be possible if "they had something concrete to work with."

"If they had a picture, the FBI would be notified, and if they should develop a suspect they would notify us," he said.

Although officials will not disclose the amounts of money available to the bursars, it is not uncommon to

see many students cash financial aid checks for several hundred dollars on days when tuition is due.

Area banks also have a policy of not disclosing how much cash a teller is allowed to keep, but Samuel Eddy, assistant vice president and security officer of the Marquette National Bank, said the amount is limited.

"Under our insurance we can only keep a certain amount in the drawer at all times," he said. If the tellers exceed that amount, he said, they are required to deposit the surplus cash in the bank vault, which is kept locked at all times.

"It's not very much, either," Eddy added. "They keep it down very low. Usually nobody wants (to withdraw) more than \$150 or \$200. If businesses want a large amount of money they usually call in advance."

When a University bursar is robbed, the police policy is to give up the money if there is any risk of people being injured.

"Our primary concern is protecting lives. Secondary is to make the apprehension, but not at the expense of having a gunfight in a crowded area," University Police Chief Eugene Wilson said.

When the police are notified, two cars are sent with two officers in each car. If plainclothes men are available, two will enter the building; however, if only uniformed officers are available, they will not enter the building as long as the suspect is still inside.

"If they know the robber is inside, then they cover the doors," Wilson said. "The possibility of hostages being harmed is high if immediate action is taken by police. History has proved that over and over again."

Will security policies change in the future?

"We're looking at security all the time," bursar Kenneth Erickson said, but "we have no present plans for immediate changes."

Steinem: Nice girls do make revolutions

By Rebecca Morris

Most of our images of famous radicals are culled from television news programs—usually tall, usually loud, humorless and insistent, and always bigger than life.

So it is still a little surprising for most people when they meet Gloria Steinem. She is an engaging, gracious woman, with the slightly halting speech and mannerisms of a writer who had to learn to speak before large audiences and television cameras. Combined with her radical ideas and rhetoric, her message—more than anything else—seems to be that nice girls do indeed make revolutions.

Steinem was in Minneapolis Monday to talk about the revolution in attitudes created by the women's movement in the 1970s and its goals in the 1980s, and to promote the "new Ms. Magazine," which recently became a nonprofit subsidiary of the Ms. Foundation for Education and Communication. Steinem spoke to a capacity crowd of 800 at the downtown YWCA.

"The enormous insights and hopes and—for the first time—free dreams of the 1970s that women and men have dared to aspire to must be reflected in institutional change in the 1980s that is available to most people," she said. "It will be much more frustrating, but it will also be more satisfying and more real."

Steinem reviewed some of those "insights and hopes," frequently drawing enthusiastic and knowing responses from her audience.

"Our own lives have changed," she said. "As someone said, 'We are becoming the men we wanted to marry.'"

"From small consciousness-raising groups in living rooms, we have become a majority movement in this country. Our goals are supported by a majority of both women and men."

Steinem said the women's movement redefined such basic terms as "work" and "family" in the '70s, creating a new analysis of power structures in the process.

"We have begun to challenge culturally masculine logic," she said. For example, she said women have challenged the notion that just because a woman spends almost a year bringing a child into the world, she also must spend most of her life caring for it alone.

"We have begun to redefine work—to understand that what women do at home is work. . . . In fact, women who work at home work longer hours than any other workers in this country," and with less pay, fewer benefits and more danger of violence, she said.

"We've begun to talk about 'parenthood' instead of 'motherhood'—a major revolution of the '70s," she said. More generally, feminists have redefined the whole family structure.

The women's movement has also progressed from concepts like "equal pay for equal work" and getting more women into traditionally male jobs, to more realistic, radical ideas, Steinem said.

"Towards the end of the decade, we started to talk about 'equal pay for comparable work,'" she said. Equal pay for equal work "didn't affect most women. Most women work in what is known as the 'pink-collar ghetto' . . . where 'equal pay for equal work' is meaningless. Equal to



Gloria Steinem

whom? The woman standing next to you?"

One of the institutional changes which Steinem thinks must take place in the '80s has already happened: the change in Ms. Magazine's status from a profit-making venture to a not-for-profit subsidiary of an educational-charitable foundation.

Although Steinem said she thinks the magazine had to survive as a commercial business in order to gain respect, she said the change in structure will make Ms. "more in tune with what we spiritually are,"

and able to provide new services.

One new service will be an expanded role on campuses. Steinem said Ms. will provide more subscription subsidies through women's studies and other departments, and study guides with the campus-destined issues.

Steinem half-jokingly suggested another institutional change—in the realm of politics. "One of my late-night dreams about what feminism could do is take over the Republican Party," she said. "The first convention, there would be blood kneedeep, and the second convention

would be okay."

The question of what role feminists should play in the presidential campaign is causing serious controversy within the women's movement, however. The increasing activity of right wing groups is of particular concern.

Steinem suggested that women should focus on the issue of reproductive freedom. "It is a fundamental right," she said. "I think we need an independent political movement on this issue. If the right wing is able to

SALE
Men's & women's
Boots
Belts
Bags
Tannery
dale's end in Dinkydale
Dinkytown

SALE
• SHOES • BOOTS
• DRESSES • SHIRTS
• SWEATERS • BLAZERS
• SKIRTS • PANTS
the
STORE
in
Dinkytown
Adornment for Young Ladies
Dinkydale

JAN. SUPER SALE
Sweaters 25%-40% off
Sportcoats Entire Stock
Pendleton Shirts 25% off
Turtlenecks \$5.44
Britches
for the latest in fashionable men's wear
Dinkydale

QUODDY DECK SHOES

ONLY \$29.95
RUNNERS UP
107 University Av. S.E. Hours: M-F 9-5, Sat. 9-5, Sun. 12-5
331-3845

news

Dance-A-Thon total updated, tips \$41,500

Over \$41,500 was raised in the 1980 Muscular Dystrophy Dance-A-Thon held last Friday and Saturday at Coffman Union. That's an update of the \$36,000 figure reported in Monday's Daily.

Students catch theft suspect

Two University students chased and apprehended a suspected purse thief in the area of 5th St. SE Sunday evening. The students, Tim Sagehorn, 18, and Chuck Ott, 22, pursued the suspect down 5th St., catching him inside the Gopher Campus Motor Lodge on 4th St. and 10th Av. SE and holding him until police arrived.

Minneapolis police said Beatrice Finanger, House Director of Pi Beta Phi sorority, was walking on 5th St. near 11th Av. when the suspect approached her, and after a brief struggle, wrested the purse from her. The suspect was described by Sagehorn as about 17 years old.

Clarification

Two details in a Jan. 11 story on family energy conservation need clarification:

- Electricity accounts for about 18 percent of all energy use, according to national data. Two-thirds of the families in family social science associate professor Jan Hogan's study increased their use of electricity.

- To maximize energy efficiency when a thermostat is being lowered 10 degrees or more, it should be left lowered for at least eight hours.

Protein dollar workshop today

If what you eat is controlled by the money in your pocket, a workshop at 12:15 today, "Stretching your protein dollar," may help. The workshop, sponsored by Boynton Health Service, Room N325, is free to students. Other Boynton workshops this quarter will discuss weight control, vegetarianism, exercise, vitamins, sexuality and how to avoid a hang-over.

Megasite from 1

a University junior majoring in speech and hearing science, offered to stay out of school fall quarter to help fight for the family's land. But Chris's parents convinced her to return last September.

"Dad thinks it will be a long battle," she said. "Of course, he's fighting for his land—this has been home for three generations of his family—but he always says the important thing to remember is that our land is prime agricultural land that would be lost forever—unrecoverable—if a landfill was allowed."

Unique partnership

Virgil Marple, a University associate professor of mechanical engineering, agrees with Dietrich; using the 840 acres as a county dumping ground would be a "waste of valuable agricultural land." Marple lives on a farm just across the road from the site boundaries. Though he would not lose his farm if the megasite were selected, he said he would "be very much affected by a landfill."

Marple believes his property would devalue and fears contamination of his well water supply. He also feels many of the area's farmers would be devastated if they were forced to move. "A farmer and his land is a unique partnership. When you break up that, you essentially ruin the farmer—he will never be as productive again. We need the land for food. To use it in a big slug—like a megasite landfill—for something that's not necessary just doesn't seem to be right."

"I consider it an act of war and independence should act accordingly. We'll fight to the end," Marple said.

This landfill battle is not a case of the

good guys (landowners) against the bad guys (county officials.) But the guys each have their own special interests in this case. The landowners want to save their land. County officials say they are sympathetic to the landowner's plight, but also say a landfill has to be sited. They say, in the end, there has to be a "balancing of interests." What is for the common good may not be good for everyone.

Independence landowners, along with many other people, claim the county doesn't need to site any landfill space. They say present technology will handle the county's future garbage—without landfilling. County officials say they are examining and studying such alternatives, but also say they won't be able to make any decisions for a few years. And then it will take a few more to employ new technology.

Steinem from 3

knock off a couple more of the good senators on this issue—or claim they did it—we'll have a lot more trouble with that constitutional convention." Steinem is a founding member of Voters for Choice, a political committee which hopes to raise \$500,000 to counter right wing efforts to defeat pro-choice legislators.

Steinem said it is too early for feminists to endorse a presidential candidate, but some early assessments can be made.

"I think the man who is best" on the questions of structures and powerless groups "is John Anderson. If he does well in the primaries, it may push the parties in the right direction."

Among those candidates who are considered to have a chance to win, Steinem said "it's clear that Kennedy is better than Carter, but Kennedy hasn't given me any reason to move forward with enthusiasm."



MYSTERIES
follow the adventures of Jim Delaney, freelance writer daily in the Daily

cupc BORED? cupc

Got the winter blahs? Want to do more with your life than study and watch the boob tube? If so, then CUPC has a position for you!

We are now accepting applications for coordinators for Chicano Cultural Affairs, Gallery, Popular Entertainment, Recreation, and Trips and Outings.

Put some excitement into your life and call Rae at 373-7600 for more info.
Or just drop in to 220 Coffman Union.

JUNE APPLE CO-OP
JAN. 18 & 19

FRIDAY:
DAKOTA DAVE HULL
SEAN BLACKBURN
BUTCH THOMPSON
MAUREEN McELDERY
CHARLIE MAGUIRE

WITH SATURDAY:
POP WAGNER
BOB BOVEE
BOB DOUGLAS
TOM LIEBERMAN
JERRY RAU

TICKETS \$3 AT MSA TOO, WAX MUSEUMS & AT DOOR

the whole coffehouse is in the basement of Coffman Union



JOIN THE 1980 CAMPAIGN

meeting today
2:15 308 CMU
340-0690

KENNEDY FOR PRESIDENT THE MINNESOTA CAMPAIGN

Produce Bank Bldg. • 100 North 7th Street • 300B • Minneapolis

Paid for by the Kennedy for President Committee, Washington, D.C., a copy of our report is on file with the Federal Elections Commission.

BROKE! WANT A JOB?

State Work Study Money Available Now!

You qualify for a well-paying college work-study position if

- you're a resident of the State of Minnesota
- you're a full-time student (undergrad-12 credits, grad-9 credits)
- you haven't already received other financial aid sufficient to cover your educational costs

Family resources not considered! No lengthy paperwork!

Come in to the Financial Aid Office—210 Fraser Hall, Mpls.
199 Coffey Hall, St. Paul

8:30-12N Monday-Friday
12:45-3:30 Monday-Friday

NO appointment necessary—ask to see a counselor about available State Work Study funds.

MD

You'll receive \$10.00 for your donation of plasma used in manufacture of substance critical to treatment of hemophiliacs (bleeders.) Also used for burn and shock victims (\$10 also for 2nd visit same week.) Procedure administered by professional medical staff. Not the same as donating blood. Procedure may be repeated more than once per week. Ideal for students, housewives groups and clubs. Professional donors earn

\$10 CASH FOR EACH DONATION

\$2 EXTRA
With this ad for your first plasma donation TOTAL \$12

UP TO \$100 Per MONTH

We accept donors Mon-Thurs
8:00 a.m. until 8:00 p.m.
(new donors in by 7:00 p.m.)
Fri 8:00 a.m. until 6:30 p.m.
(new donors in by 5:30 p.m.)
Sat. 8:00 a.m. - 3:00 p.m.
(new donors in by 1:00 p.m.)

New Location
UNIVERSITY CENTER
1025 Washington Ave. S.E.
(next to Arby's)
331-9180

BLOOD PLASMA SERVICES

Minneapolis Freshman Council Meets with President C.P. Magrath

All Interested Freshmen Welcome

TODAY

3:30 p.m.
1/16/80
320 CMU

He's YOUR President
BE THERE!!



Learn to Scuba Dive

(2) NAUI certified classes will be taught through the U of M Scuba Club Winter Quarter. Starts Tues. Jan. 15 and Wed. Jan. 16. Meet at Cooke Hall Room 206 6-10 p.m. and Sundays at Ascension pool in Mpls. 5-9 p.m. Mask, fins and snorkel are needed by the second week. Learn to Dive by spring break. Fee \$65


For more details and to register call 788-1947 EVENINGS



U.S. National Parks—A Sampling
January 14-18—12 Noon
North Star Ballroom

TODAY
"One Man's Alaska"
Lake Clark National Park. Depiction of the beauty of the seasons, the abundance of wildlife and the lifestyle of man alone in the wilderness—Film
"Change of Seasons" Voyageurs National Park through the seasons—Film

TOMORROW
"Acid Rain"
"Its Ecological Consequences"
An Illustrated Lecture
by Eville Gorham, Professor of Ecology and Behavioral Biology
"Forever Yours"
Ozark National Scenic Riverway
Scenic views and wildlife along rivers in the Missouri Ozarks—Film




JOIN THE 1980 CAMPAIGN

meeting today
2:15 308 CMU
340-0690

KENNEDY FOR PRESIDENT THE MINNESOTA CAMPAIGN

Produce Bank Bldg. • 100 North 7th Street • 300B • Minneapolis

Paid for by the Kennedy for President Committee, Washington, D.C., a copy of our report is on file with the Federal Elections Commission.

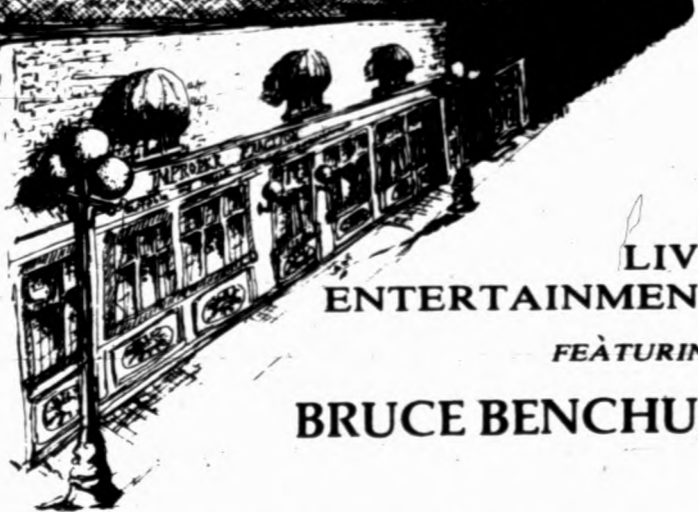
SOMEONE MUST SAY NO!
Energy Development on Indian Land
Speakers: Karen Means
Mike Garrity
Butch Chasing Hawk

3:15 Jan. 18 CMU Great Hall
FREE

Sponsored by:
Coffman Union Program Council & American Indian Student Association



IMPROPER FRACTION
Eatable and Potable Consumption Establishment



LIVE ENTERTAINMENT
FEATURING
BRUCE BENCHUK

RESTAURANT & SALOON

712 Washington Ave. S.E.
Across from Memorial Stadium
Free Parking in rear

Hours:
11 am-1 am Mon.-Sat.
5 pm-12 am Sun.
378-3838

St. Paul design display spans 4 centuries

By Raequel Roberts

"Drawing is the most important tool for the designer—it is his way of seeing," design professor Timothy Blade believes.

To teach his students this concept, Blade has assembled a month-long exhibit of master drawings in the Goldstein Gallery in McNeal Hall on the St. Paul campus.

"Drawing for Design" is split into four categories of drawings: landscape, plant forms, architecture and drapery. "I limited the subjects to those having direct relevance to the disciplines of design taught within the department," Blade said.

The architectural display relates to housing and interior design and the draped figure exhibit to costume design. The landscape and plant form displays relate to nature, which Blade said "is the inspiration for all designers."

Besides old drawings, some dating back to the 1600s, the exhibit includes several more recent pieces done by students in the College of Home Economics. One student working on her doctorate in historic costumes did a colored pencil drawing of a 1900 evening dress.

"She used the drawing as a method of intense observation," Blade said, "that you can't get by looking at a photograph."

Another reason for assembling the display was to give students a chance to see master drawings that often are inaccessible. Blade chose each piece because it solved a design problem, not because of the artist.

Many of the drawings, particularly in the architectural display, are preliminary sketches used by stone cutters and builders as blueprints for their work.



Timothy Blade

A variety of media, such as crayon, pen and ink, and watercolor were utilized in the drawings. One of the pieces is a delicate drawing of a branch done with silver paint.

Some of the drawings are so small they pull the viewer in to catch every detail and shadow. And some, such as a brown chalk portrait that's eight feet tall, are somewhat overpowering.

On one wall of the gallery is a progression of drawings showing the influence of one artist on another.

Blade said it shows how "the initial concept, the presentation and the style are borrowed, reused, modified and modernized by succeeding artists."

"It's important for students to realize they are part of a continuum," Blade said. "The problems they confront have confronted all designers."

"Drawings for Design" will be on display until Feb. 5.

Photo: Steven Greene

A KNEE-DEEP AFFAIR
with
Michael Jones
Dance to the disco rhythms of Fox Trap's D.J. Michael Jones
—come to party—
Jan. 18, 1980
8:30 P.M. \$1.00
Mississippi Room
3rd floor Coffman Union
for more information call
373-7600



the BIG MOUNTAIN
WHITEFISH, MONTANA
COMPLETE SKI PACKAGES
from \$352.90
Packages Include:

- *7 nights lodging
- *6 days lifts
- *6 days meals (3 per day)
- *Roundtrip transfers
- *Roundtrip Amtrak Superliner from Mpls/St. Paul

For additional information call:
TRAVEL PRO TOURS
5219 Wayzata Blvd.
Mpls. MN. 55416
(612) 546-6665
Or contact your local agent.

HENNEPIN
PERSONNEL
A-300 Government Center
Minneapolis, MN 55407
HENNEPIN COUNTY
an equal opportunity employer

PART-TIME FULL-TIME TEMP.

Openings available immed. at Hennepin County Medical Center Emergency Room for those w/1 yr. cler. exp. & typing skills (45wpm). All shifts, FLEXIBLE HOURS, some wknds convenient for students. Liberal benefits included! Dynamic environment; will train. Call Carol at 347-2277 for more info or apply immed. at HENNEPIN COUNTY MEDICAL CENTER, PERSONNEL, 701 Park Ave. S. or HENNEPIN COUNTY PERSONNEL, A-3 Government Center, 3rd Ave. & 6th St. S., Mpls.
AN AFFIRMATIVE ACTION EMPLOYER

CASHIERING
FT & PT openings for Cashier Clerks at Medical Center Cafe. Hours to suit students: 7-3:30 p.m. or 3-11 p.m. M-F inclg. e/o wknd. Req's 6 mos. public contact or cashiering exp. Benefits included! Call Linda at 348-5583 or apply immed. at HENNEPIN COUNTY PERSONNEL, A-3 Government Center, 3rd Ave. & 6th St. S., Mpls.
AN AFFIRMATIVE ACTION EMPLOYER

Read the Daily!

Or does that seem silly (since you are obviously reading this)? Well then just never mind.

Editorial writers: Don Clark, Val Crawford, Michael Douglas, Paul Fishman, Jeff Goldberg, Tom Minehart, Kate Stanley



Criminal Code

For more than a decade, Congress has attempted to pass a comprehensive, uniformly drafted and consistently organized criminal code. The present Federal Criminal Code, the result of nearly two centuries of law making, has been consolidated three times in the past century. In each instance, Congress eliminated gross inconsistencies in the code but shied away from substantial reform. Now lawmakers are on the verge of considering a reform package that would streamline the code, bringing order to an ad-hoc collection of some 3,000 statutes.

The danger has been cures worse than the disease. Earlier attempts to reform the code were blocked by legislators and civil libertarians who objected to provisions that reestablished the death penalty for treason, espionage and arson, imposed severe penalties for government officials who released information thought to be secret—and for journalists who published it—and extended federal controls over the right to assemble and protest. Most of these flaws have been eliminated in the present reform package, but the bill still contains controversial provisions that must be carefully considered.

One weak spot involves judicial discretion in withholding bail. The new code proposes that a judge may deny bail and place restrictions on an arrested person if he deems the person a danger to the community. Critics of this provision argue that it is a form of preventive detention that violates the legal assumption that a person is innocent until proven guilty. Defenders argue

that to permit a suspect to enter back into the community invites further violation of the law. As the proposed law stands, the powers of the judge are too broad and ambiguous. To strike a balance between individual rights and the safety of society, the bill ought to include clear guidelines to permit the judge to detain only those suspects who have demonstrated a potential threat to the community.

One benefit of the proposed code is uniform guidelines for sentencing; it would establish determinant mandatory minimum sentences for each federal crime. Judges would adhere to the sentences as closely as possible and be allowed to set a higher or lower sentence only in extraordinary cases. If the sentences were unusually harsh or lenient, the defendant or the government might appeal the sentence.

In addition to determinant sentencing, legislators streamlined sentencing procedures by eliminating parole and alternatives to prison for nondangerous offenders. The rights of those individuals who are not hardened criminals might be better preserved if judges were encouraged to consider community service, restitution, split sentences and work release as alternatives to incarceration. In some cases, a term in jail may do more damage to the prisoner, and, eventually, to the community than a less restricted punishment.

These and other questions about the criminal code need to be thoroughly considered. The temptation to expedite passage of the reforms because of political considerations should be resisted. After more than a decade of considering 200 years of accumulated law, Congress should promote a full debate.

letters Ray of hope

Of mice and (wo)men

Sara Webb's letter "Fire Down Below" (Daily, Jan. 10), was gratefully posted on the bulletin board of Williamson Hall's underground Admissions Office.

Like Ms. Webb, we suffer from headaches, eye irritation and other ailments caused by working in a closed environment. Underground at Williamson Hall, we are also subject to water dripping from the ceiling, mice, and an unpredictable heating system which can leave us freezing or sweltering at any season of the year or, indeed, time of day. Our greatest distress is caused by ventilation which usually is so low as to make the atmosphere suffocating and airless, and when turned on, often wafts noxious fumes through our offices.

It is difficult enough to endure working in a close, humid and unnatural location. The psychological discomfort is exacerbated by pulmonary distress, allergic reactions and other physical symptoms. And we can only question the efficiency of a building which has caused an increase in sick days lost from work and which has twice forced our office staff to be dismissed from the building.

We would like to be proud to work in a building which has been praised in the national media and to be taking part in a solution to the energy crisis. But it is difficult to be enthusiastic about underground office buildings when their proponents ignore or cavalierly dismiss the reactions of those who work in them.

Chris Shillock
Senior Office Assistant,
Williamson Hall
and 15 others

After four years of hearing the incessant whining of chicano activist Ray Roybal, it's good to know that turnout is fair play. I am, of course, referring to Ray's \$7,000 loan debt.

According to the Daily, Ray has borrowed this amount over the period of about three years for his seven-year (graduate?) degree. Mr. Roybal has been quick to accuse the University of racism and genocide. I see that he was just as quick in grabbing his portion of the (University's) ill-gotten gains. Of course, something like this could only happen at a completely racist school.

Ray, the truth of the matter is that women and minorities have it made. Being a male Caucasian, I doubt that I could ever have run up a loan debt like that even if I had wanted to. In my experiences as summer intern, I've found that large corporations with "affirmative action" programs go out of their way to obtain women and minorities in typically white male-dominated positions, and I don't mean a few token employees. White males are in the vast minority in these programs.

I also know that some corporations actually pay women and minorities more for the same job simply because they are women and minorities. Granted, most are highly qualified, but that's besides the point. You want to talk about sexism and racism? Please, Ray, no more vague claims to racism here, I've had a bellyful.

Michael Cecchini
IT senior

Peace with Rudy

Sen. Rudy Boschwitz deserves applause for suggesting that Soviet action in Afghanistan requires military response on the part of the United States. I also agree with Boschwitz that the Russians must have gotten a "good laugh" out of Carter's threat to boycott the Olympics and Boschwitz is not being overly hawkish.

True, military force should not be a first course of action and only the greatest scrutiny should be used in its



consideration. But I am really getting fed up with those factions in society, such as the Daily, who apparently feel that peaceful means can continually and exclusively be used to solve international disputes.

Ultimately, the only thing the Soviets will respect is the United States' capacity and willingness to use military force and only this willingness will deter their hegemonic aggression.

Apparently, the U.S.S.R. does not hold such respect for the United States at present. Perhaps 10 years from now, when the Russians control the entire Mideast and can shut off our oil tap at will, we will re-examine our idealistic diplomatic policy of 1980. In this case, an ounce of prevention may be worth a pound of cure.

Kevin Lindquist
IT senior

Wanted: WM Gdlkg Crtnist

I'd like to take a brief (that's all it deserves) moment to comment on Jack Ohman's cartoon poking fun at the

MATRIX series (Daily, Jan. 14).

You're incredible, Jack. As a member of the MATRIX Advisory Committee (MAC), I've been racking my brains trying to come up with suggestions of people and events for the series to cover. But not until I saw your cartoon depicting Diane and C. Peter Magrath in bed, did I finally come up with a really great idea.

At the next meeting of MAC, I'm going to suggest that we devote one segment of the series to a comprehensive look into the life of a newspaper cartoonist. We can let the people of Minnesota understand the triumphs and traumas of a member of the pen-and-ink set. How does he brush his teeth? What color is his underwear? How often does he sharpen his pencils? How long does it take him to get a date (and can it be measured in seconds, hours or months)?

The citizens of this state deserve to know the answers to the above ques-

tions, and more. Thanks, Jack. I knew you could be counted on for helpful hints. And I'm sure you won't mind if I offer your name as a likely candidate for this segment.

Sue Gjoms
Student Body President

Divine dj

On Jan. 4, "All Things Considered," a news program broadcast over National Public Radio, had a story about Vatican Radio in Rome. It seems that Vatican Radio has broadcast an interview with the Virgin Mary.

Maybe the good "Christians" at this University should move to cut its funding!

David Brandwein
Department of Agriculture

Letters Policy

The Daily welcomes expressions of all viewpoints from readers. Letters should be kept as brief as possible and are subject to condensation. They must include signature, valid mailing address and telephone number and the writer's year in school or occupation. Pseudonyms and initials will not be used unless approved by the editor-in-chief. Because of the volume of mail received, unpublished individual letters cannot be acknowledged. If you have any questions regarding letters to the editor, call the Daily at 373-3381 or stop in at 11 Murphy Hall, University of Minnesota, Minneapolis, MN 55455.

opinions

Security: Guns and responsibility

By Stephen Jantscher

In the article by Mulford Sibley titled, "The Futility of Might," printed in the Daily Jan. 7, the author claims many things. He appeals to the impressionable and misinformed. This article is an attempt to answer many of the questions Mr. Sibley raises.

The U.S. military never lost a battle in Vietnam. Our forces, when applied as they were meant to be, did a crackerjack job. The "Christmas Bombing," a lovely media-coined phrase, (the campaign was actually called "Linebacker 11") did work. Of it, Admiral Thomas Moorer said, "Airpower, given its day in court after almost a decade of frustration, confirmed its effectiveness as an instrument of national power in just nine and a half flying days." Our military had the North Vietnamese beaten.

Mr. Sibley contends that today military power is useless in resolving major social and political issues. I believe power, military might and the perception of its use by possible enemies, is the only reality in today's world. Mr. Sibley points to the notion that there is no connection between military power and the political events of the post-World War II world. Does he fail to see what Cuba has done in Central and Northeastern Africa? Has he heard of what Vietnam is doing to enlarge her Southeast Asian empire? Are these not successful uses of military power? The West may protest all it can, but how will that counter the 100,000 Russian troops in Afghanistan? It's clear, it won't. Military might is not futile; it is rather the only tangible force in international politics today.

The Hanoi Vietnamese did win their war. Their nation is whole once more. It was because of the Vietnamese resolve to use their military might that they eventually prevailed. Mr. Sibley assumes that the North Vietnamese didn't win, because they, "... inherited a country devastated by the Americans and themselves." That is pure rhetoric. In every 20th-century war, both sides (the winner and loser) have had to make great sacrifices. Granted, the North Vietnamese did inherit a war-torn country, but it is their country today. Now they are no longer hampered by outsiders seeking to "free" the rest of Southeast Asia.

To make good threats, one must be ready and willing to commit one's forces to back up those threats. This credibility also applies to nuclear weapons as Mr. Sibley suggests. However, I believe he is wrong in assuming that if they are ever used, millions of us and our enemies would burn. He evidently believes in only the "total war" use of nuclear weapons. Military might must involve the calculated use of tactical nuclear weapons. Used selectively, these tactical nukes would not spell doom for all of us.

Mr. Sibley also favors total unilateral disarmament. He sees this as being safer than the millions of megatons hanging over our heads. I have no doubt for one minute that, if the United States did engage in unilateral disarmament, the

Stephen Jantscher is a political science major at the University.

Soviets would jump at the chance to deal once and for all with its superpower rival.

I believe Mr. Sibley has also confused his facts and fallen into a popular misconception concerning "overkill." "Overkill," another term coined by the press, came about during the 1950s. It is a direct result of the two atomic bombs dropped on Japan, the only times this type of weapon had been used. Thus, we had actual "kill per kiloton" figures to work with. Once we had this number, (let's just say 10,000 people dead per kiloton on target), we would divide it into the population of the earth (let's just say 4 billion) to gain a figure that would equal enough kilotonnage to kill everyone on earth (for our figures, 400,000 kilotons). If any world power would stockpile more than that kilotonnage, it would be said to have "overkill" capacity. These are not the actual numbers, but that is how the term did originate. It was an attempt by a long-forgotten writer to figure out how many of these "new" atomic bombs would be necessary to kill all the humans on earth. No account has considered target dispersion, delivery system accuracy, or even delivery system life in a war environment. After all, not all that "overkill" will make it to the target, or even be

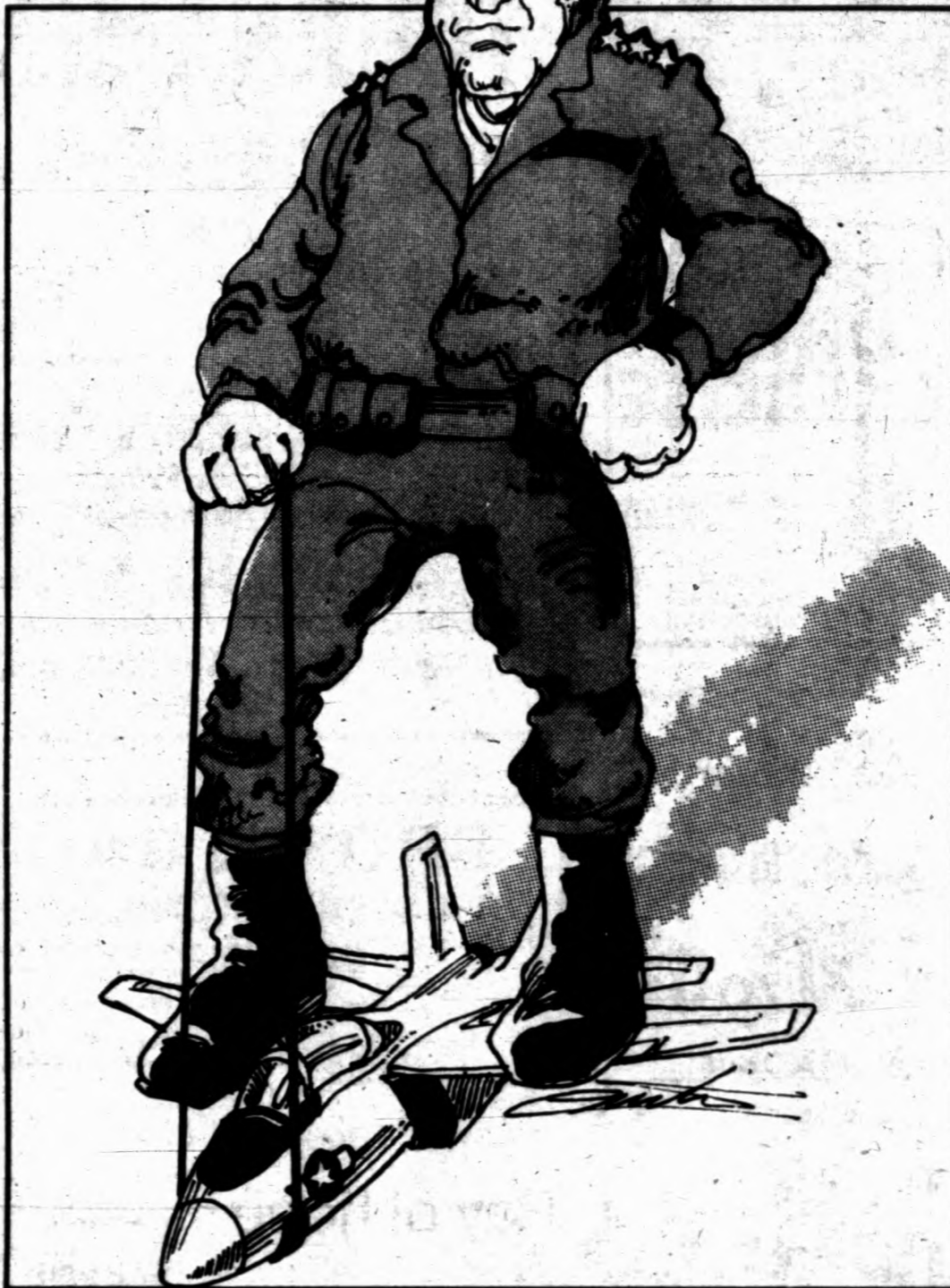
"Military might is not futile; it is rather the only tangible force in international politics today."

fired in the first wave. Again, Mr. Sibley fails in the basics.

An implied fact also evident is that we're all going to die in a full-blown nuclear war. That is not true! It would be worse than the firebombings during World War II, but people would survive, and psychological studies have shown that the survivors will want to live.

Mr. Sibley claims that the U.S. military mission is to counter a literal World War II type invasion of North America. This is a practical impossibility given the armed citizenry of this nation, the size of our country and the distances the invading army would have to travel. By bringing up this notion, he clouds the issue. Like it or not, America has vital interests in other nations, and if trade and communication with these nations is denied, as much or more damage could occur to this nation as from an invasion attempt. Would Mr. Sibley have us believe U.S. naval superiority was not the single most important factor in resolving the Cuban missile crisis?

Mr. Sibley states that commitment to military might is foolish. He even uses an example from the Vietnam war to support his contention. I see that war as the most non-military war in our history. The military wasn't given a free hand to gain the desired goals.



I claim that this country has not been committed to military might since World War II. True commitment to military might yields wars where no quarter is asked, and none is given. Because of political considerations, the enemy gained the military upper hand in Vietnam. U.S. commanders were hampered on all fronts by the ever-changing and convoluted rules of war, forced upon them by Washington politicians and their political science advisers.

Mr. Sibley's article goes on to draw all sorts of Iranian-type scenarios where U.S.-supported nations fall, and turn on their old friend. Again, only through U.S. neglect would any of these scenarios come true.

Conscription, or at least registration, is necessary in order to quickly field an army in times of need. This is as Mr. Sibley suggests. However, he goes on to conclude that conscription would lead to military adventurism. Now he forgets the one major result of the Vietnam war, that no longer can the government expect automatic obedience. Now the government must make its case, and win our hearts and minds

first. There will be no more unpopular wars.

Let's face it, nobody wants to die out of bed. To fall and gasp your last breath, at the prime of your life, on some foreign land is most horrible. I would question the sanity of anybody who would prefer that death. But, facts are facts. We live in a comfortable country where it is easy to reject military service. Our enemies don't have to deal with that problem. Their young men will go and die for their country. Russians are dying even now in Afghanistan.

In conclusion, the question is not will we resist our government's manipulation; but, will we rise to our international responsibilities. By being the most powerful free nation on earth, our duty should be obvious. Our resolve should be strong.

The myth of Soviet moderation

By George F. Will

Washington—Looking on the bright side (as has been said, hope is a lousy guide but a good companion), perhaps those people are right who say the Soviet invasion of Afghanistan was a "blessing in disguise." Their theory is that Afghanistan will be, for the Soviets, "a Vietnam."

To believe that, you only need to believe two implausible things. First, that the Afghan resistance (with us supplying it something, maybe) will be a fighting force comparable to what the North Vietnamese army was, supplied by the Soviets. Second, that Soviet power will be used as foolishly as U.S. power was used in Vietnam.

Looking on the bright side (doing so is silly, but why should the State Department have all the fun?), the invasion has provoked some revealing talk. For example, French officials are reported to have said that "Russia has stepped outside the territorial bonds of the Yalta Pact."

Perhaps it is Gallic drollery to say that Yalta put

George F. Will is a syndicated columnist of the Washington Post Writers Group.

Wednesday, January 16, 1980

"bonds" on Russia. Yalta was an early cause of postwar disillusionment. (Harry Hopkins on Yalta: "We really believed in our hearts that this was the dawn of the new day we had all been praying for and talking about for so many years.") Now Yalta has popped up again, a ghost at the funeral of the latest illusion, détente.

Of course for some people, one illusion is indestructible. It is that the Soviet Union's most disturbing acts of domestic brutality and international violence are aberrational, not true expressions of the Soviet state. For example, Sen. Charles Percy (R-Il.) recently said on Meet the Press that "our first priority must go toward proving to the Kremlin that whoever it was—the hawks that ventured forth into Afghanistan—were dead wrong, that they had reversed the policy of a decade and that we have got to prove them wrong and have the moderates come back in power."

Evidently, the assumption is that "moderates" (unnamed, but presumably including Brezhnev) normally run the Soviet Union, but have been suddenly and secretly pushed from power by some sort of semi-coup run by hawks (unnamed). When we have "proved them wrong," the hawks will turn power back to the moder-

ates. The absence of evidence for this thrilling tale is beside the point. People believe things like this because, evidently, they can't bear to believe that the Soviet Union isn't "normally" run by "moderates."

The postulated existence of mysterious Soviet hawks, who periodically lock the "moderates" in a Kremlin closet, "explains" what Percy considers a radical departure from the policies of the 1970s. Notice his charge that the invasion "reversed the policy of a decade."

"Reversed?" That suggests that the 1970s were a decade of acceptable, even accommodating, Soviet behavior. Actually, in the 1970s those who Percy calls "moderates" financed an unprecedented arms buildup while the United States rested on its oars. Those "moderates" incited and financed the destruction of South Vietnam, the Yom Kippur war, an international plague of terrorism, and the deployment of Cuban and other proxies hither and yon.

Sen. Joseph Biden (D-De.), one of Percy's colleagues on the Foreign Relations Committee and, until recently, the very model of the modern detentist, now says the economic sanctions against the Soviet Union should remain in place as long as Soviet troops remain

in Afghanistan. Biden, 37, will not live to see the troops withdrawn, and I'll bet he changes his mind.

The Soviet crushing of Czechoslovakia in 1968 provoked Western outrage that was as brief as it was intense. By March 1969, U.S. allies were pressing for U.S. acceptance of what the Soviets wanted and soon got: a European Security Conference. It ratified the real meaning of Yalta: Soviet domination of Eastern Europe.

It won't be long now—May, I'd guess—before the Soviet "moderates" escape from the closet. The Senate Foreign Relations Committee will rejoice in the escape and will say that it means the United States now should: "normalize" relations, increase grain sales and other trade, expand cultural exchanges, make a symbolic withdrawal of U.S. forces from somewhere (perhaps from the Indian Ocean), and ratify SALT II.

What reason will be given for doing all this? Need you ask? We must strengthen the "moderates" in the Kremlin.

Join in the
St. Paul Student Center's
Grand Opening
Celebration
Jan. 21-26th



st. paul student center
373-1051


CLIP and SAVE

AEROBIC DANCE EXERCISE

U of M campus, West Bank & 10 other locations

Classes start this week
Register today at 427 1/2 Cedar

West Bank
Call 340-1306
Remodeled Studio
COMMUNITY DANCE CENTER
CLIP and SAVE



Morgan's
Fine Jewelry

Student Discount!
up to **50% off**

- DIAMONDS
- JEWELRY
- WEDDING RINGS

Midwest Fed. Bldg. 332-0453
801 Nicollet Mall, Suite 1740

FOOSBALL TOURNAMENTS

Every Thursday 7 P.M.

Entry Fee: \$3.00

1st Prize: 50%
2nd Prize: 25%
3rd Prize: 15%
4th Prize: 10%

Prize Money percentage of total entry fees

Plus: A \$25.00 Cash Bonus To The Winner
(Under Tournament Rules)

Varsity Bar & Cafe
1509 University Avenue Southeast
Minneapolis, Minnesota 55419
331-8633

BROWN BAG IT!

DISCOVER WHAT THESE MAJORS CAN DO FOR YOU

BUSINESS
ECONOMIC; JANUARY 16
12-1 p.m.
B-33 Johnston Hall



CLA
PREMAJOR ADVISING'S
BROWN BAG SCHOOL

Graduating Engineers

We'll be on campus.
Plan to see Gary Schulke
January 25.

Want to put the knowledge you've developed in school to work? Right away? With an industry leader, involved in some of the most advanced technology work available? In an area where the lifestyle is as rewarding as the exciting work assignments?

Talk to Sperry Flight Systems!

At Sperry, located in the ideal environment of Phoenix, Arizona, you'll be able to make the best use of your talents. A wide variety of projects involving airborne electronic and electromechanical systems, as well as systems for space flight applications, provide challenges in engineering and an opportunity for personal development.

We're interviewing BS and MS candidates in Electrical/Electronic Engineering or Mechanical Engineering for entry positions in:

Product Design
Research & Development
Control Systems
Electronic Design
Design Analysis

Talk to us about your career and about our excellent pay and complete program of benefits, including tuition refund. Make an appointment now by contacting your campus Placement Office. Or, if you're unable to see us on campus, send your resume and transcript to: College Relations Coordinator.

 **SPERRY**
FLIGHT SYSTEMS
P. O. Box 21111
Phoenix, Arizona 85036

We're an Equal Opportunity Employer
U.S. citizenship or permanent resident status required

Engineers

Sundstrand on campus...

Jan. 28

As one of the world's leading suppliers of advanced systems and components for aerospace manufacturers, we play a vital role on craft such as the space shuttle, all U.S. commercial jets, current military programs, and a number of business jets. Sundstrand also is known for its products in energy systems, air comfort, power transmission, and fluid handling.

If you're interested in a creative engineering environment where you can work with outstanding professionals, investigate Sundstrand. We offer competitive salaries, strong benefits, and a generous educational reimbursement program. Our headquarters are in Rockford, Illinois, a medium-sized community with varied employment opportunities for spouses.

On-campus interviewer... Gene Roy

 **SUNDSTRAND**

4751 Harrison Avenue
Rockford, IL 61101

An Equal Opportunity Employer M/F

Committed to aerospace growth



"PIFFLE!"

snickered Reginald. "I have miles to go before I sleep or concern myself with life insurance."

Wake up, Reg. Insurance is protection—while you're going those miles you have to go. Insurance can play a big part in your life. And the best time to invest is now. Since you're young and in good health, it'll cost a lot less.

Wondering about your financial future can get pretty heavy—until you figure out what to do about it. That's where we can help. Stop by our Campus Office today and take advantage of being young.

 **PROVIDENT MUTUAL**
LIFE INSURANCE COMPANY
OF PHILADELPHIA
Home Office: P.O. Box 7378 Phila. Pa. 19101

KEVIN ELDER



Campus Representative
1611 Park Ave., Mpls.
335-6421

complement



LIFE ON THE LINE

Text by Paul Choitz
Photos by Steve Zerby

Farm life has changed for the Pedersons, not because of recessions, wheat shipments or milk prices, but because of power—who has it, where it comes from, and where it is going.

They are a typical farm family, but they are determined to rid themselves of a power line some utilities decided to build across their farms.

They have the usual farm worries, like trying to find tractor parts or getting in the corn before the weather changes. And in a country where 2,000 farms fold each week, they are making a go of it.

But they also wonder how their tractor caught on fire, and why their phone often won't work. They keep a suspicious eye on headlights in the rear view mirror as they travel lonely country roads at night. And they feel uneasy about the number of headaches and nosebleeds they now get. What started as a \$633-million electric line for United Power Association of Elk River and Cooperative Power Association of Edina has become a \$1.24-billion pitched battle.

And though the smoke may have subsided, the shots are still being fired. New issues, such as health effects and the mismanagement of funds have been added. The 800 kilovolt direct current power line stretching from Underwood, N.D. to Delano, Mn. has tied together a strong line of resistance, especially in north central Minnesota.

And the Pederson farms outside of Lowry are in the middle of the siege. The coming of the power line activated the Pedersons in a way they couldn't have foreseen.

"I never would have thought that I'd be speaking before the state legislature on my own behalf, a shy boy like me," said Steffen Peder-

son, with bewilderment as to how it all happened.

Taking a coffee break around the kitchen table in Steffen's trailerhouse, the family starts to talk about the power line.

"They used force to put it in and they have to use force to keep it up. But they won't find a solution by force. In other words, they'll have to take it down," said Ted Pederson, Steffen's son who lives on an adjoining farm with his wife Phyllis and their two children.

You don't think force or repression will work?

"Repression? That's an interesting word," said Steffen, grasping onto it as though hefting a stone in the field, turning it slowly, puzzling over its origins.

It's the quiet philosopher in Steffen that makes him a natural leader and trustee of the General Assembly to Stop the Powerline (GASP). He's not the boisterous, back-slapping type of person. He's slight with a gawky, almost self-conscious walk. His speech moves with a hesitant pondering, each syllable worked over as it comes through, letting his measured logic carry his message.

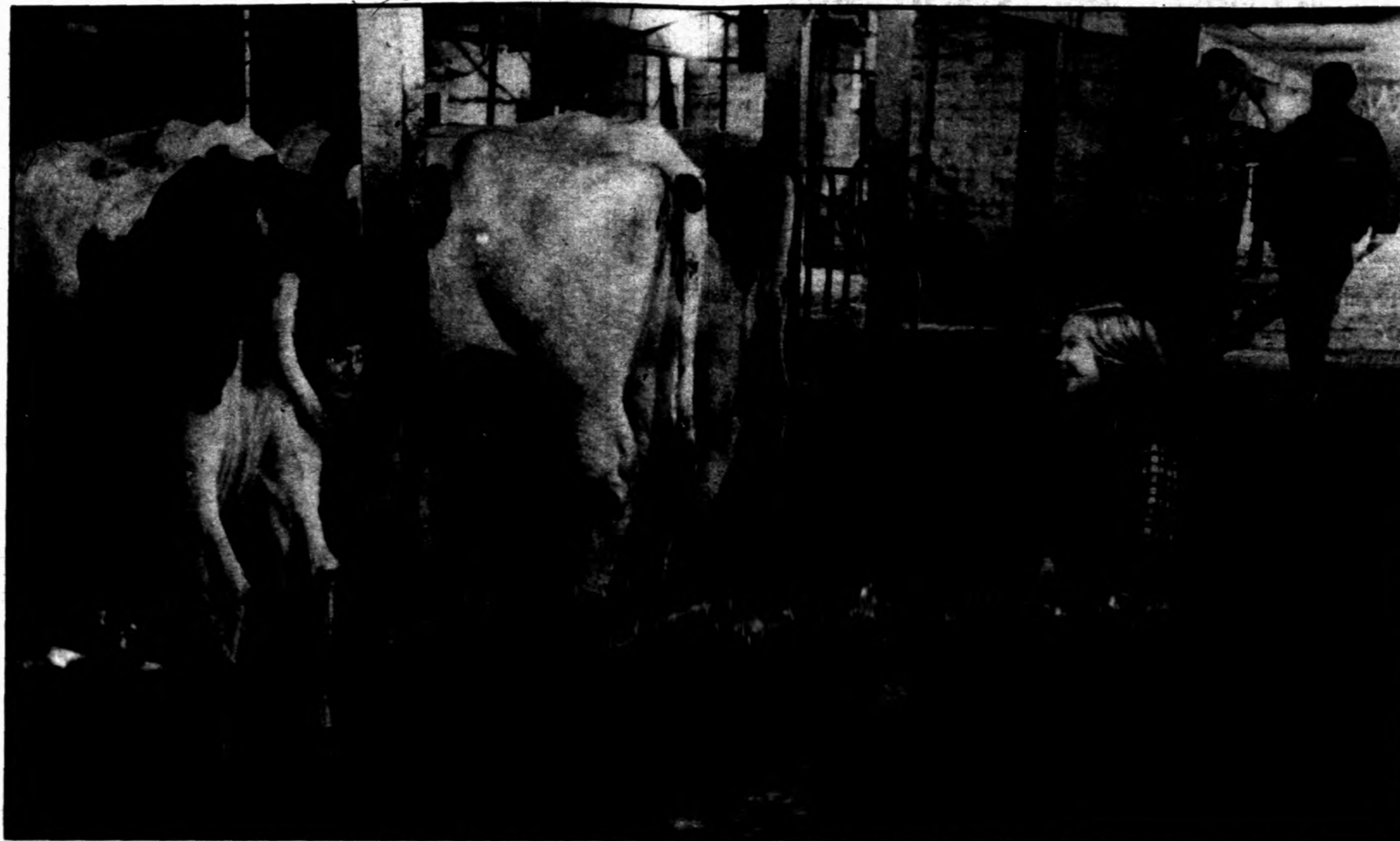
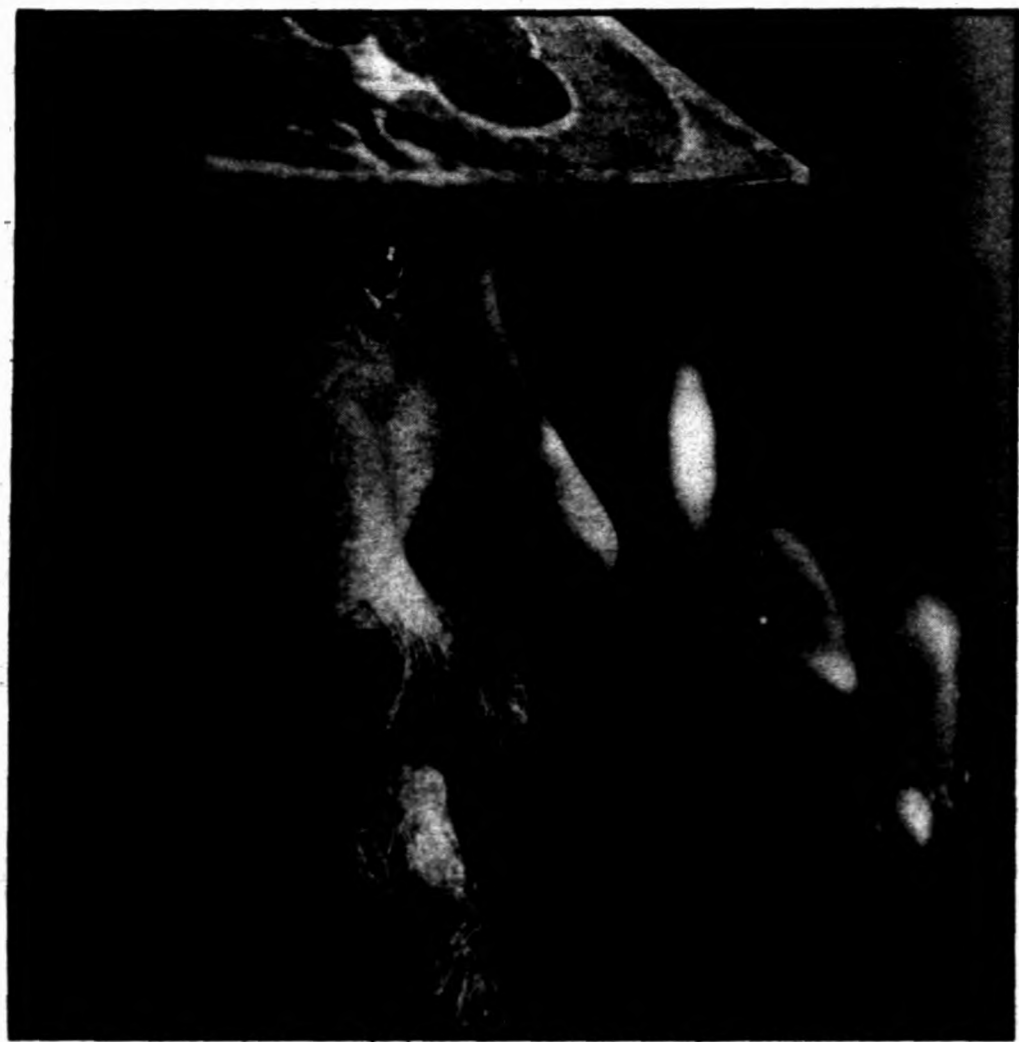
"The power line is an abuse of the truth from beginning to end and I can't abide with that stuff. It's a poor thing to have on a farm," he said. "It hurts the social structure to have something dangerous like that hanging around . . . forced on the people."

"I think it would have been different had they built it fairly," Steffen said, his voice straining with anger, "but they didn't do that."

A large plate of cookies, the kind farm families always seem to have, travels around the table and coffee cups are refilled.

Steffen has farmed since he was a boy. "I was the powerhouse of my father's farm. We were just as tough as athletes then—we had to be," he said. "But I was shy. I didn't want to see





Who's got the power?

people. Oh, and father frowned on politics."

Steffen wasn't always against the power line. When he first read about it, he had thought it would be quite an accomplishment.

But that attitude quickly changed. As he began to feel that the line was unjust to the farmers, Steffen became one of the first farmers to be arrested for civil disobedience (trespassing).

"I wanted to make a civil rights deal out of it," he said. As the sheriff—an awfully big guy—was making out a ticket to another farmer, Steffen walked up to him. "Can I get one of them?" I asked him. "I've never had a traffic ticket or nothing," he said with a chuckle.

and down the length of the parlor on her tricycle.

"Kari, slow down and watch where you're going. Remember what happened last week," Sharon called out as Kari sped giggling past. She's like a towheaded bird flitting about the barn, everywhere at once.

"Last week she was riding along like that and looking back to see if we were watching," Sharon explained, "and she went into the manure trough, and then rolled right under a cow. Luckily it didn't step on her."

Sharon and John set to their milking with smooth precision, bustling behind the cows.

relax... It's a good life," Sharon said.

Sharon and John both feel the power line is causing some changes in their cows, and their veterinarian has encouraged them and their neighbors to keep very thorough records. It seems to them as though it's harder to breed the cows than it was in the past. And many farmers complain of a greater number of spontaneous abortions with their animals as well as a decrease in milk production.

"This is where you get people talking," said Sharon, also a CASP trustee. "I mean, this is our income. You get the feeling that you have to do something."

"I never would have thought that I'd be speaking before the state legislature on my own behalf, a shy boy like me."

But he said that while most people think the protest has died out since those times in 1978, farmers are as mad as ever.

"Their kids are sick and their cattle aren't doing well and they're mad because they were told that the line would be safe," said Ted, pointing out that it is the only power line of its kind in the country. Very little research has been done on high-voltage direct current lines, he said.

Phyllis has been going door to door talking to people living near the power line, trying to get people to speak up about problems.

"A lot more people are starting to listen now," she said.

Outside in the barn's milking parlor the cows munch quietly on their feed, the cats saunter out of hiding and Kari, John and Sharon Pederson's four-year-old daughter, flashes up

shifting milkers, running out hoses, cleaning udders. Their teamwork proves the experience from years of twice-a-day milkings.

They work Steffen's acreage with him hoping to someday take it on as their own. Both have lived on farms all their lives except for a five-year spell in the "city."

"I thought city life was the life I'd like, but it wasn't," Sharon said. "Health-wise I feel so much better out here... Until that thing came along," she said, nodding toward the power line.

Kari hopped along in front of the cows calling each one by its name, so much the sparrow near the thick, slow-moving heads.

"Hilda, Doty

"It's amazing how good it feels to come in at night and have everything all done and sit and

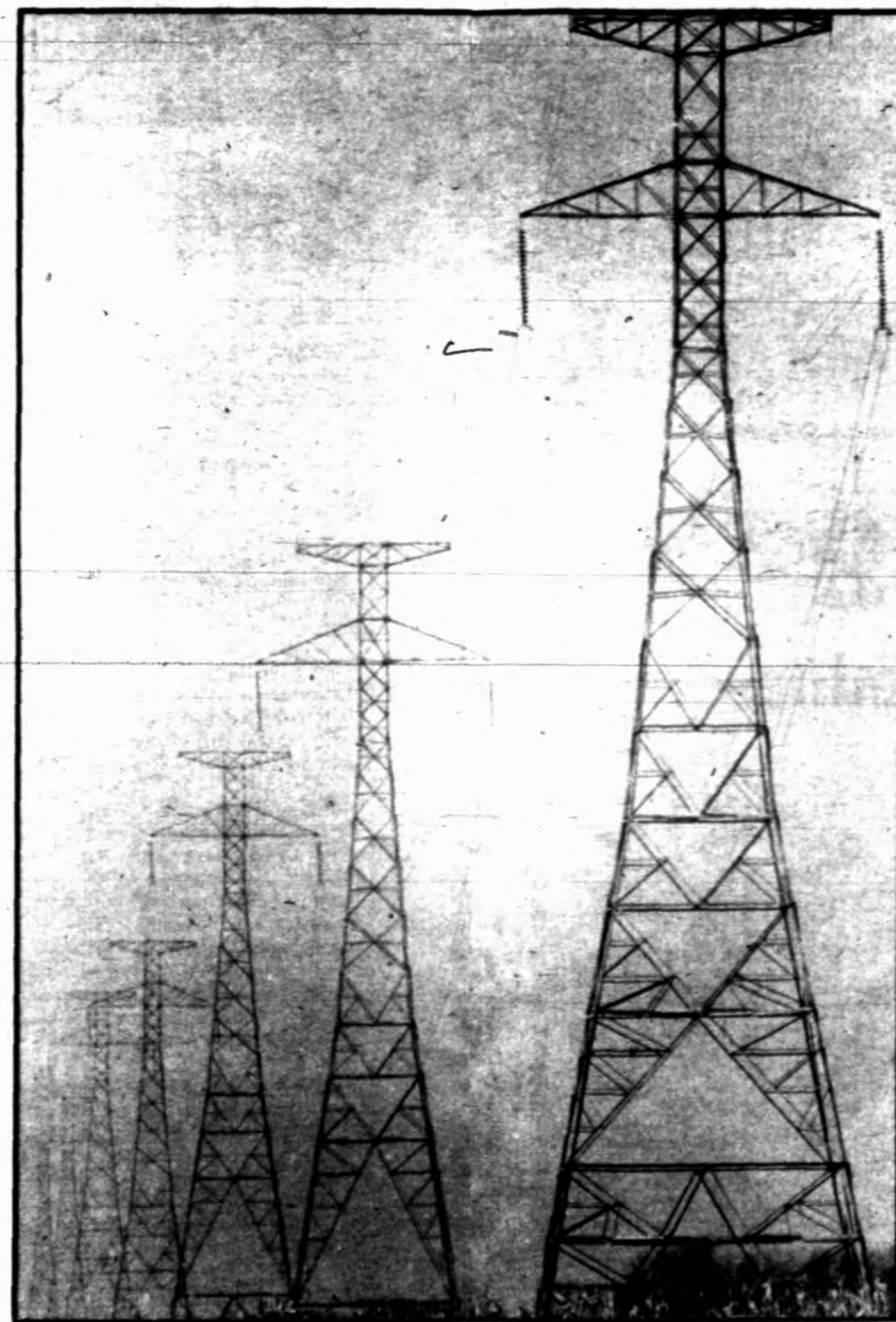
John pours the steaming milk into the "step-saver" from which it gets sucked into the tank in the milk house.

"I don't know," he said pausing for a second, "the health department is going to have a lot of business. They say we can't prove it's harmful, but they can't prove it's safe. As long as that power line is up, there will be people protesting."

"I think my biggest worry is her," Sharon said glancing towards Kari, now sweeping feed over in the corner. "You know she's only four. But it all follows right through to your kids."

One day after a B.C.A. (Bureau of Criminal Apprehension) man left, she (Kari) comes up to me and says, "We ought to shoot those guards and then we could kick those towers down."

Near the road going away from the Pederson farm stands a power tower, one of 1,700 that support the line on its flight down to Delano.



A string of giants marching a quarter mile apart across the land. Although not yet up to capacity, the wires crackle overhead, heating the air around them.

A wind sweeps out of the northwest, flowing along as if it too is following the power line. It's a strong wind.



Cover: Steffen Pederson is determined in his farming and in his fight to remove the power line. The Pederson family: Rear, from left: Ted, John and Danny; foreground: Steffen; kneeling, from left: Phyllis and Sharon; front, from left: Steve, Shelly and Kari.

Inside: Ted Pederson. Kari watches as her mother, Sharon, milks the cows. John Pederson. Kari peeks through a window.

SPORTS

Wrestling coach tries to make sport pay off for U

By Bill Peterson

The University men's athletic department has a vision.

Picture this: 15,000 fans from every part of Minnesota in Williams Arena going nuts. Clapping their hands, stomping their feet, waving their banners, screaming, primed for a match-up between the Gophers and another national contender.

The next Gopher home basketball game? Well, yeah, but getting 15,000 people out for a Gopher basketball game isn't much of a trick. No, the athletic department wants to get 15,000 out for a wrestling meet.

Don't laugh yet. It could happen.

And to make sure it does, Gopher wrestling coach Wally Johnson has been working for six months with the Minnesota Wrestling Coaches Association (MWCA), trying to sell tickets for one particular meet—Feb. 3 against Iowa State.

The idea was to pick one meet, promote it through the high school wrestling coaches, get every high school wrestling squad possible to attend and try to get community benefactors to buy blocks of tickets (at \$1 and \$2 apiece) so they could be distributed to students. In short, do anything to get 15,000 in the building for one showcase match.

"We've been trying, as a nonrevenue sport, to generate revenue," Johnson said. "You'd like to make revenue to ease the burdens of the department and we're going to try to do this every year to do that."

The men's athletic department will share the money with the MWCA, although it hasn't been decided what the split will be. Still, any money the athletic department would get would help it considerably.

"We have eight sports that come under the heading of 'nonrevenue,'" athletic director Paul Giel said. "All of them might bring in \$20,000 a year. That's all of them together. So, any dollars that would come back to the athletic department would be a plus."

Most of the promotion for the meet has been done through the wrestling coaches, though the University Sports Information Department is giving it more than the normal push for a dual meet and Johnson has gone through the media to some extent.

"The athletic department hasn't gone much further," Giel said. "It is not our project. They just recently asked us for some help, so I gave the information to Ray Christensen (for broadcast during Gopher basketball games on WCCO radio) and I talked about it myself on my halftime show."

Johnson's choice for the date of the match came somewhat by accident, but his choice for opponent did not.

The match originally was going to be wrestled Feb. 4, a Monday night. But Johnson moved the match to Feb. 3, Sunday afternoon, so it wouldn't conflict with the East-West All-Star Classic in Iowa City Feb. 4.

Shortly after the switch was made, Gopher 142-pounder Jim Martinez and Gopher 158-pounder Dan Zilverberg were named to the East team for the All-Star match.

"Sunday is a much better day for the match, anyway," Johnson said. "It will be a lot easier for the schools to make their travel arrangements and it's a day off from school. I'd like to have it (the showcase match) on Sunday every year."

The switch hasn't hurt ticket sales for the event. About 1,000 have been sold, according to the athletic ticket office, and it is expected that most of the advance tickets will be sold as the meet draws nearer.

Johnson said the choice of Iowa State as the this year's showcase was a natural.

"We've got neighbors: Iowa, Iowa State and Wisconsin," Johnson said. "So, we'll try to have the match against one of those teams every year, because they are neighbors and they are also good teams."

So Johnson's hoping for a little help from friends and neighbors. And if he's successful in getting 15,000 people out to the match, he hopes no one will be laughing next year when he talks about filling Williams Arena for a wrestling meet.

SPORTS SHORT

U swim team floats to win over Nebraska

The two weeks of grueling workouts that the Gopher men's swim team put in over winter break paid off in grand style Saturday as Minnesota rolled over Big Eight power Nebraska 66-47 at Cooke Hall.

"The hard work we did in Hawaii really showed up," coach Bud Erickson said. "We were very strong and consistent throughout the entire meet. When you work as hard as we did in Hawaii, the regular workouts seem much easier when you get back home. Everyone is much stronger now than they were a month ago, and we really showed that improvement today."

The Gopher 400-yard medley relay team of Dave Monkman, Dave Beckman, Phil Wilk and Art Griffith got Minnesota off to a quick start with a first-place finish of 3:33.28, nearly seven seconds ahead of the Corn-

huskers. From there, the Gophers grabbed victories in eight of 13 events from last year's second-place Big Eight squad.

Junior Scott Malm, plagued with tendonitis in his shoulder since October, turned in a strong performance in the 200-yard backstroke.

"I was real pleased with my time," said Malm, who has been ranked among the top 25 backstrokers in the world. "I had been in a slump for quite a while. It's good to get a fast time again. My shoulder's feeling better now and I'm looking forward to a good second half of the season."

The Gopher diving team had unusual trouble on the one-meter board. Jeff Adamson's second-place finish accounted for the only points registered for the Gophers in that event.

All-American diver Brent Bordson, who ended up last in the one-meter competition, led Minnesota's surge on the three-meter with a first place finish. Adamson tied for third with Nebraska's Steve Elliott.

"Our performances on the high board (three-meter) were excellent, especially after doing so poorly on the one-meter," diving coach Frank Oman said. "Bordson was great on the high board. It was good for his confidence to do well after diving poorly in the event before. It showed how great of a competitor he is."

The Gophers will face Nebraska again on Saturday when they travel to Lincoln for the Nebraska Invitational.

Tourney sign-up ends today

Today is the last day to sign up for Association of College Unions-International recreation tournaments held at Coffman Union winter quarter.

Tournaments include bowling, eight-ball pool and table tennis. High-finishers will qualify for regional tournaments. Eight women and eight men bowlers will qualify, two men and two women pool players.

Interested students can sign up in the Coffman Recreation and Outings Center (in the basement).

SONIA JOHNSON
MORMONS FOR E.R.A.
Will Speak On:
CHURCH VS. WOMEN
FRIDAY, JAN. 18
12 NOON
MAYO AUDITORIUM
Sponsored by:
Cross Disciplinary Studies, Concerts & Lectures, Family Social Science, Minnesota Women's Center, PHIV, Philosophy, U-YWCA, Women's Studies, Coffman Union Program Council

Have You Ever Wondered What **CUPC** Really Means?
Join us at the **CUPC OPEN HOUSE**
and discover dance, theatre, recreation, minority affairs, etc...and a fun way to share your interests with a lot of crazy people.
Wed. Jan. 16 1-4
Coffman 230
For further information call Rae at 373-7600

The following is a weekly schedule of AA Meetings held on the Twin City Campus—University of Minnesota

Tuesday	7:45 p.m. - 8:45 p.m. 2-135 Jackson Hall	Thursday	11:45 a.m. - 12:45 p.m. St. Paul Physical Plant 2nd floor conference room
Wednesday	11:45 a.m. - 12:45 p.m. Armory 116		7:45 p.m. - 8:45 p.m. Biological Science Center Room 70 St. Paul Campus

Any employee that has a problem with alcohol or drugs is welcome
For further information call 376-3332

Feast Northeast.



RUDOLPHS BAR-B-QUE

Northeast - 815 East Hennepin - 379-4900
St. Paul - Randolph at Fenwick - 598-5501
Mpls. - Franklin at Lyndale - 871-8969
OPEN 7 DAYS A WEEK

SAVE 2 WAYS
AT MIDWEST VISION CENTERS

- You save on hard and soft contact lenses.
Choose between hard and soft contact lenses, get specialized, professional attention and save money.

HARD CONTACTS	SOFT CONTACTS
\$6995	\$10000
(Examination additional)	

60 day money back guarantee.
- Free, a Six Month Contact Lens Maintenance Agreement.
Includes unlimited contact lens replacement and maintenance program. Plus lens maintenance, preferred appointment time and annual lens inspection. Offer expires February 28, 1980.

EYES EXAMINED BY REGISTERED OPTOMETRIST


midwest Vision centers

1660 White Bear Ave. HILLCREST — ST. PAUL 776-1118
Lexington Plaza Shopping Ctr. 487-1223

Pudge's
Brings You **Wacky Wednesday**

Ford Parkway at Cretin (94 to Cretin, South to Ford Pkwy) 698-8885
All Drinks 1/2 price!

9 p.m. - 1 a.m. Any Wednesday \$1.00 Cover



This Coupon Entitles Bearer to **Free Admission** to Pudge's Wacky Wednesday



Now that Planned Parenthood has a new face, we're looking forward to seeing yours.

Chances are you've heard about our new Planned Parenthood clinic. But for one reason or another you haven't stopped by yet.

We'd like to encourage you to come visit us. For two reasons. First, we're darned proud of our spiffy new clinic. And we'd kind of like to show it off. Second, and most important, we can give you good, sound information on birth control, VD and pregnancy. If you need a medical checkup we can take care of that. Or offer counseling in birth control related areas.

Stop by our new clinic. We'd like to see your face. And have you meet our whole staff of friendly faces.

Clinic open: Monday, 3:30-5:30; Tuesday and Thursday, 3:30-6:30; Saturday, 9:00-12:00. Men and women of all ages welcome, but please phone for an appointment.

PP Planned Parenthood
127 South 10th Street, Mpls. 336-8931

Great System Great Price \$595



NAD 3020 Integrated amplifier,
NAD 5020 turntable, Cizek model 3
speakers. System shown with optional
NAD 4020 Tuner: \$175, and optional
rackmount handles: \$15/pair

Continuing in our tradition of assembling stereo systems that offer exceptional value and performance, we have assembled a system that is so remarkable, you'd expect it to come from The Sound Environment, but at a price so low... you won't believe your ears.

Our \$595 System is built around the unbelievable NAD 3020 integrated amplifier. It will literally out-perform any amp in its class and many costing much more. Stereo Review, July 1979 said: "So far as we're concerned, it is one of the best values in audio."

The turntable is the superb semi-automatic, NAD 5020. A simple, yet technically advanced turntable with low mass tonearm and matching cartridge.

The Cizek Model Three speakers sound much larger than they are and have been acclaimed by audiophiles for their excellent dispersion, extended highs, rich midrange and deep, well-defined bass.

It is an excellent combination of components in a logical music system you must see and hear to appreciate. Only at The Sound Environment.



THE SOUND ENVIRONMENT

Audio Systems & Design, Inc.

Butler Square
First Avenue North at Sixth
Minneapolis, MN 55403
612/339-4641

Bonaventure
Plymouth Road & Highway 12
Minnetonka, MN 55343
612/546-1630

Edina
3240 Southdale Circle
Edina, MN 55435
612/926-7674

Also in Lincoln and Omaha, Nebraska

© 1979 Audio Systems & Design, Inc.

data

Official Daily Bulletin

Vol. 81 January 16, 1980 No. 82
Students and staff are urged to read the Official Daily Bulletin and are held responsible for notices that affect them. They are also answerable for information on departmental bulletin boards.

Notices must be received by 10 a.m. two working days prior to publication and should be sent to Official Daily Bulletin, 5-68 Morr. Except for certain notices of campus-wide importance, notices will be printed only once.

ALL STAFF & FACULTY

Rental of Original Art
Full-time faculty & staff may rent original oils, prints, watercolors & drawings for campus or personal use, by appt only, Jan 16-Feb 1, from U Gallery, M-16 NMA. Must have proper ID. Fees: campus use \$20, personal use \$20.80, per composition per year. Call 373-5685, 9-11 am & 2-4 pm for appt & info.

AG, FORESTRY, HOME EC STUDENTS

Rhet 3561/3562 Exemption Exam
9 am-12 noon, Feb 2, 210 HckrH. Jrs & srs report to 202 HckrH by 3 pm, Jan 31 for verification of eligibility.

What's Doing

All items for What's Doing must be submitted in writing by 4 pm two working days preceding publication. They must be University community oriented. This service is free; forms may be obtained at 18 Murphy Hall. Notices will be published the day of the event only. Call Nadira Somwaru: 373-3381.

PUBLIC BUSINESS—MEETINGS

University Lesbian/Gay Community, meeting and speaker presentations by parents of gay men and lesbians. 7:30 pm tonight, CMU east lounge.
U of M Racquetball Club, meeting, court time follows. 7:15 pm tonight, Cooke Hall 214.

Inter-Varsity Christian Fellowship, Large group for computers. Topic: "Urbana-What Happened?" 12:15-1 pm today, CMU 325.

Campus group, Northern Sun Alliance, meeting to discuss Prairie Island plant and April demonstration in Washington D.C. 2 pm today, CMU 325.

Children of the Night, Pagan religious organization. 7 pm tonight, CMU 325.

Minneapolis Freshman Council, Guest speaker, C. Peter Magrath. 3:30-5 pm today, CMU 320.

Inter-Varsity Christian Fellowship, Bible study, book of John. 11 am today, McNeal Hall 51P.

American Indian Student Association, Meeting to discuss campus speaker, spring pow wow. 3 pm today, Jones 104.

Bible Study, Sponsored by Christians. 12:1-4:45 pm today, AgEng 25 51P.

Chi Alpha Christian Fellowship, Worship and bible study. 12:15-1 pm today, CMU 305.

U of M Cross Country Ski Team, meeting 7 pm tonight, 527 21 Av. So. Info: 339-0610.

CLA Brown Bag School, Economics faculty will discuss majors and careers. Noon today, Johnston 633.

Bible Study, Book of Luke. 12:15 pm and 7:30 pm Thursday Jan 17, Newman Center. 1701 University Av. SE.

LECTURES—SEMINARS

Hunger Awareness dinner, Fundraiser for Cambodia with Congressman Richard Nolan. Also slide show of Cambodian Refugee camps. 6 pm tonight, University Lutheran Center. 1101 University Av. SE. Admission \$3.50.

Judge Braswell A. Deen, Chief judge, Georgia Court of Appeals will lecture on teaching of creation theory and evolution theory in public school. 3:15 pm today, Law School. Room number will be posted.

Leisure Counseling, by Bobbe Vecch. Part of a series of recreation and leisure seminars. 10:30 am Thursday Jan 17, Kaufert Lab 302. 51P.

"Are Congenital Viral Infections Preventable?" Lecture by Dr. Henry Balfour, 8 am today. Eustis Amphitheater.

City Wide Pathology conference, 12:30 pm today, 3-145 Jackson Hall.

"Dihydrocarbamate Rescues and Platinum Meophototoxicity (Platinum as a Chemotherapeutic Agent)" Lecture by Dr. Richard Borch. 3:15 pm today, North Court Engineering 220.

"Ion and Electronic Transport in Donor Polymer-Modified Electrodes," Lecture by Dr. Frank Kaufman. 7:30 pm tonight, IBM-Watson Research Center.

"Invitation to Belief," Course for those with knowledge of the Christian faith as taught by Lutherans. 7:30 pm tonight, University Lutheran Center, 1101 University Av. SE.

Record Manager/Basic Access Method, in-depth course of file structure, file processing and error processing. 3:15-5 pm today, Arch 60, SAR.

Data to 15



THE CONVENIENCE OF CAFETERIA DINING WITH THE PLUS OF HOME COOKING

310 18th Ave. SE
Just north of the
fieldhouse • 379-3731

7-11 Continental Breakfast
11-2 Lunch
2-8 ala carte (Wed. & Fri. 2-6)

MEDICAL STUDENTS: SAVE OVER \$15,000 AND BE PAID TO SAVE IT!

The cost of education is soaring and medical school is no different. The Air Force will be choosing qualified medical students to award a fully paid scholarship.

Some of the entitlements are:

- ☆ \$453 per month expense money, tax free
- ☆ Payment of full tuition and required fees
- ☆ 45 days a year as a 2nd Lt. at an Air Force Medical Center



To find out more about the Air Force scholarship contact: Medical Recruiting (612) 331-8216/2856

SALE!!

OUTERWEAR 20% to 40% OFF



Dinkytown Edina

Hennepin County Personnel SR. FOOD SERVICE WORKER

\$3.63-5.45/hr.

HENNEPIN COUNTY MEDICAL CENTER

downtown Mpls. Coordinates ordering & distribution of meals for hospital patients. FT & PT positions avail. Requirements 1 yr. quantity food service exp. or 1 yr. college/Vo. Tech. Call Jo Smeltzly at 348-5585 or apply at:

HENNEPIN COUNTY
MEDICAL CENTER

A-3 Government Center Mpls.
AN AFFIRMATIVE
ACTION EMPLOYER

NURSING ASSISTANT

\$3.63-5.05/hr.

FT & PT positions avail. at

HENNEPIN COUNTY MEDICAL CENTER

Rotating shifts. No exp. required. Liberal benefits. Call Jo at 348-5585 or apply at:

HENNEPIN COUNTY
PERSONNEL OFFICE

A-3 Government Center,
3rd Ave. & 6th St. S. Mpls.
AN AFFIRMATIVE
ACTION EMPLOYER

CHILD CARE WORKER PART-TIME positions.

Supervise activities of youth in detention setting at JUVENILE CENTER in Roseville. Requirements completion of 40 quarter credits in social or behavioral sciences. For more info. call Jo Smeltzly at 348-5585 or apply at:

HENNEPIN COUNTY
PERSONNEL

A-3 Government Center,
3rd Ave. & 6th St., Mpls.
AN AFFIRMATIVE
ACTION EMPLOYER

HENNEPIN COUNTY
PERSONNEL
A-301 Government Center
Minneapolis, MN 55407
HENNEPIN COUNTY
an equal opportunity employer

GRADUATE STUDENT JOB HUNTING AND CAREER DEVELOPMENT WORKSHOP.

Thursdays January 24, 31, February 7
3:15-4:00 Kolthoff Hall S-134

Limited Enrollment. RSVP by January 18.

Sponsored by the CLA Career Development
Office 345 Frazer Hall 373-2818

SCHOOL OF SOCIAL DEVELOPMENT

University of Minnesota.
Duluth

COMMUNITY DEVELOPMENT • SOCIAL PLANNING
RESEARCH AND PROGRAM EVALUATION
RURAL DEVELOPMENT • ADMINISTRATION
SERVICES TO AMERICAN INDIANS

An innovative, accredited MSW program with emphasis upon social change. Applicants are admitted to a 90 (6 quarters) or 60 credit (4 quarters) plan, depending upon background. Field opportunities available around the country or in developing countries. Entrance to the program ordinarily in September. For information about program and possible financial aid, write:

Irl Carter, Dean
The School of Social Development
University of Minnesota-Duluth
Duluth, MN 55812

Reach 75,000 People Daily
Through the Daily Classifieds
Call for a column-373-3385

Al Johnsons January Clearance in Progress

MENS CLOTHING
AND SPORTSWEAR



378-1442
DINKYTOWN

FREE PARKING

920-5450
EDINA



BE A CHAMPION

REGISTER NOW FOR TOURNAMENTS TO SELECT U of M REPRESENTATIVES FOR THE ASSOCIATION OF COLLEGE UNIONS INTERNATIONAL (ACU-I) REGIONAL RECREATION TOURNAMENTS. U of M WINNERS WILL BE SELECTED IN BOWLING, 8-BALL POOL AND TABLE TENNIS.

ADVANCING TO REGIONALS WILL BE...

- BOWLING: FIVE MEN, FIVE WOMEN
- 8-BALL POOL: TWO MEN, TWO WOMEN
- TABLE TENNIS: TWO MEN, TWO WOMEN

Sign-up
by TODAY

MEN'S AND WOMEN'S DIVISIONS IN EACH EVENT. MUST BE FULL-TIME STUDENT (UNDERGRAD, GRAD). \$2.00 ENTRY FEE. (REDUCED RATES FOR TABLE TENNIS, LANE CHARGES) WINNERS' EXPENSES PAID TO FEB. 15-17 REGIONAL TOURNEYS. REGION WINNERS ADVANCE TO NATIONALS.



FOR INFO. OR SIGN-UP, VISIT...

373-2412

Coffman Recreation/Outing Center



THE SOFTEST PRICE IN TOWN!



Bausch & Lomb Soflens®
for a limited time only: **Reg. '99**

\$85

60 Day Trial Wearing Program! EXPIRES FEB 16, 1980

20% - 30% - 40% up to 50% OFF!

Not valid with Inflation Fighter Special. No other coupons applicable during this promotion.

**SUPER
SPECTACULAR
SPECTACLE
SALE!!**

a select group of frames with your purchase of a complete pair of glasses.

Ridgedale Center 546-3311 Maplewood Mall 770-1212 Burnsville Center 435-8100 Rosedale Center 631-3773 Southdale Center 927-4067

MD **tuckerman optical**

WINTER

THE MINNESOTA FORUM

1980

AFTERNOON LECTURE SERIES

What is Structuralism? An Interdisciplinary Perspective

225 Smith (Chemistry) Hall
East Bank Campus
University of Minnesota

3:30 P.M.

Wednesday, January 16
LINGUISTICS

Anatoly Liberman
Professor, Departments of
German and Scandinavian Languages

Wednesday, January 23
MATHEMATICS

Lawrence Markus
Professor, Department of
Mathematics;
Chairman, Center for Control
Sciences

Wednesday, January 30
LITERATURE

F.R.P. Akehurst
Associate Professor,
Department of
French & Italian

Wednesday, February 6

FOLKLORE AND MYTHOLOGY

Anatoly Liberman
Professor, Departments of
German and Scandinavian Languages

Wednesday, February 13

ANTHROPOLOGY

Stephen F. Gudeman
Professor, Department of
Anthropology

Wednesday, February 20

PSYCHOLOGY

Michael P. Maratos
Associate Professor,
Child Development

Wednesday, February 27

THE STRUCTURAL METHOD

TODAY

Roman Jakobson
M.I.T. and Harvard University

Moderator: Regents Professor Rutherford Aris
Department of Chemical Engineering and Materials Science

Sponsored by the College of Liberal Arts, the Graduate School, the Minnesota Center for Advanced Studies in Language, Style, and Literary Theory, the Department of Slavic and East European Languages, the English Department, the German Department, the Department of French and Italian, the Department of Spanish and Portuguese, the Linguistics Department, the Anthropology Department, the Department of Scandinavian Languages, the Psychology Department, and the Institute of Child Development in cooperation with the Minnesota Forum, West Bank Union.

MINI/COURSES
COFFMAN UNION

LAST

day to register
9 a.m.-5 p.m.
CMU Info Center

Beginning

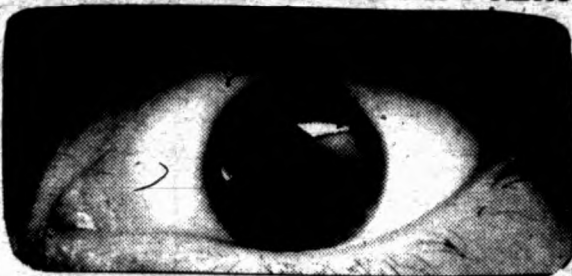
GUITAR LESSONS

Private
on U. of M. Campus
376-6589

At last... the cult film to end all cult films.

MARTIN SCORSESE AND CORINTH FILMS PRESENT
A MICHAEL POWELL FILM

STARTS TONITE



"PEEPING TOM is the story of a young photographer who stabs women to death with the sharpened leg of his tripod while filming their expressions of terror... it plays all the horror film's classic cat-and-mouse games with audience expectation."
—Film Comment

PEEPING TOM

7 DAYS ONLY! 7:30 & 9:25 nightly
Cedar at Riverside
338-6403

PROFESSIONAL CAREERS IN ACCOUNTING START WITH ACADEMY OF ACCOUNTANCY, INC.

15 West Island Avenue
Mpls., MN 55401
—Since 1936—

- Day and Evening Classes
- 2 Year Comprehensive Program
- Small Classes
- Placement Assistance

Call 378-3810

Pre-Register Now

THE BACK TO SCHOOL SALE!

IS BIGGER AND BETTER...

Warm Boots from \$29.90
Frye boots from \$69.00
Candie's from \$11.90
Dress Boots from \$44.90
Roots from \$29.00
Mens Shoes from \$14.90


All purses reduced

Savings throughout the store...
2nd pair on our special sale rack only \$10.00

The Shoe Store

(formerly Roots)

Open Monday and Thursday until 8:00 thru Jan. 31
616 Wash. Ave. S.E. 378-9739



Let Elmo put a smile on your face this winter, daily in the Daily.

mysteries

Breakfasts aren't so bad at the Scott County jail, if you like oatmeal. I hate oatmeal.

It seems that last night I tried to outrun two security men outside the Burford Corp.'s Minnesota River barge terminal. With the inimitable Jim Delaney style, I slipped and fell on my face. A swift kick in the ear knocked me for a loop, and I came to as prisoner number 15162.

Trespassing. Suspicion of lurking with intent to commit a felony. Resisting arrest.

Here lies a distinct advantage in being a freelance writer. Since anyone can be a freelancer, there are no credentials to prove you have legitimate reasons to skulk around. Not only do the publications I write for deny all responsibilities for their freelancers, it's clearly not in my interest to let them know I make a habit of getting thrown in the clink.

In short, I was in a jam. Involved in what might be my biggest story—the unexplained discovery of a headless body in the Minnesota River, that may somehow be connected with several big grain company executives—I drive down to see where the corpse is found, only to get pinched. How was I supposed to know those thugs were security guards?

My friends were too indigent to bail me out. Any friendly editors I knew would insist on knowing what I was investigating. Then my big story would be out of the bag.

I sat for five hours before remembering my ace in the hole: Steve Katz, top reporter for the Shakopee Sentinel. I decided to use one of my two phone calls; luckily, he was in the office.

"Jim Delaney," he intoned wonderingly over the clicking of typewriter keys. The bastard never stops typing to talk on the phone. "Let me guess—your car needs a jump."

"Worse. I'm in the county slammer for trespassing," I replied. "Do you have any clout down here?"

"You're asking me to take the blame for releasing you upon an unsuspecting public. I'll have to write all the rape stories, you know. What's in it for me?"

"Eternal gratitude, a meal and an interesting tale."

"Sounds perfectly lousy, but I'll do it," he grunted.

An hour later I was out of the tank with Katz, eating pork chops with Katz at the closest thing to a diner in Shakopee, a court date set for two weeks.

Steve wasn't particularly amused by my headless cadaver. But he had an earful to tell me about the Burford grain company.

8/Mysteries, daily in the Daily.

Data from 13

"Heat Transfer in Small Blood Vessels," Lecture by John Chato, U of Illinois professor. 3:15 pm today, ME 108

"Two Aymara Portraits: a Townswoman and a Campesina," Lecture by professor Jean Barstow. Sponsored by Anthropology Club. 7:30 pm tonight, Ford 210.

ARTS—MEDIA
Noon concert, New Psychonauts, rock group. Noon today, CMU, Whole Coffeehouse.

INFORMATION—ANNOUNCEMENTS
Job Hunting Workshop, First of a three-session program to help CLA students identify their strongest skills and prepare for interviews. 12:15-1:15 pm today, Fraser 345

Strong-Campbell Interest Inventory Group Interpretation sessions. Students who have taken the test can find out how to interpret it: 3:15-4:30 today. Sign up in advance in 345 Fraser Hall; sessions held in Johnston B33.

Wellness Center, information on personal health, utilization of health services and free blood pressure screening. 10 am-12 noon today, CMU.

U Film Society

If you missed it the 1st time—here's your chance
Grand Prize winner, 1978 Cannes Film Fest.; best foreign film of the year—New York Film Critics circle; top 10 of yr.—Lundegaard, Trib.

Tree of Wooden Clogs

Tonight Wed., 7:30 Willey 125
Thurs. 17 & Sun thru Thur (20-24) Willey 125
(a.k.a. West Bank Aud. 7:30 only each night)
Adm. \$3 (\$373-5287 for info.; do not call Bell)

U Film Society — Bell Museum

Today, Thurs. 7:30, 9:15 p.m. Beginning new midweek series "Whats Up Doc?"

Town Bloody Hall

The hilarious encounter between "The Prisoner of Sex" (Norman Mailer, playing devil's advocate) & "The Female Eunuch" (Germaine Greer & friends in the women's movement) at the historic Town Hall, N.Y., symposium in 1971 (film just now available due to contractual stuff). By Don Pennacker (Monterey Pop) & Chris Hegedus. (All the biggies of W.M. were there: Diana Trilling, Jill Johnston, Jane Fonda, etc.) Full of 60s anger as well as energy, just at the moment the march got under way. (See separate ad on Tree of Wooden Clogs.) Adm. \$1.75

Fri., Sat., Sun. 7:30, 9:15 p.m.
Jan. 18, 19, 20

New from Bulgaria
The Unknown Soldier's Patent Leather Shoes

Dear Inspector

A witty and wild cops-and-killers escapade that will alternately have you tensed up with excitement and doubled over with laughter. Annie Girardot is the police inspector assigned to ferret out the man who's going around sticking awls in the backs of French deputies; she's joined by her ex-sweetheart, the rotund Philippe Noiret, who wonders if she couldn't perhaps slow down the investigation just a bit so he can get something to eat. Delightful fun. Michael Blis. France, 1978/Dir. Philippe De Broca. 7:30 p.m.

A MAN AND A WOMAN

This is Claude Lelouch's Oscar-winning love story. A young widow (Anouk Aimee) and a widower (Jean-Louis Trintignant) meet at a boarding school where their children are staying. What starts out as a friendship gradually develops into a warm love affair between the woman and the man, who is a race car driver. The scenery, racing car sequences and a haunting score superbly complement the romantic undercurrents. France, 1966/Director Claude Lelouch. 9:30 p.m.


VARSITY
13th & 4th St. S.E. • 331-2492

THE GRANDEST DECEPTION YET SEEN IN ANY OF BILLY WILDER'S MASTERPIECES.

"Fedora"

PG At 7:30 & 9:30

CAMPUS
Oak & Washington S.E. • 378-3770



Data to 16

west end ground floor.
Volleyball, Every Wednesday, 7-9:30 pm, Armory Gym.

Career Exploration Panels, Professionals employed in business field will give info about their jobs. 3:15-4:30 Thursday, Jan 17, Fraser 345.

Lesbian-Gay Information Line, Call 378-2722, 7-10 pm Monday-Friday.

New Internships with United Way Agencies, Contact the Office for Special Learning Opportunities, B18 Johnston.

"ONE OF THIS YEAR'S BEST"

—Archer Winsten New York Post



Lee Remick
EUROPEANS

STARTS FRIDAY!
EDINA 1 & 2
600 & 8th Avenue, S.E. • 333-1323

CLIP and SAVE

AEROBIC DANCE EXERCISE

U of M campus, West Bank & 10 other locations

Classes start this week
Register today at 427 1/2 Cedar
West Bank
Call 348-1386
Remodeled Studio
COMMUNITY DANCE CENTER
CLIP and SAVE

SALE SHIRTS

20% to 40% OFF



Duluth Edina

INSTANT PASSPORT PHOTOS

ALSO PHOTOS FOR VISAS, I.D.'S & RESUMES AT

KINKO'S CAMPUS LOCATION

4¢
no minimum COPIES

Just off the corner of University & 15th Ave. on 15th
379-8078

Data from 15

I-M Slate

Basketball	
Williams Arena	
Born to Party vs Campus Crusade	6:30
Ho Maniacs vs Rim Kings	7:30
Sanf. VI Secs Pistons vs Front III	8:30
Mdb. VII S.L.F. vs Mdb III Cloud Piercers	9:30
Delta Tau Delta Ducks vs Sigma Alpha Mu Super Sams	10:30
Bierman Ct. 9	
Pro Co-Ni vs Shields	6:30
Unknown vs Fredies Troopers	7:30
Court Jesters vs Barney's	8:30
Phase Shifters vs The Cramps	9:30
Bierman Ct. 10	
ROTC Racing Runners vs The Change Ups	6:30
The Noble Trotters vs Cunning Linguists	7:30

Receivers vs DR's	6:30
Vanilla Thunders vs Go For It	7:30
Evans Sch. Penguins vs Sigma Alpha Mu Stammin'	8:30
Sams	10:30
Cooke Court 2	
Bouncing Beavers vs Save the	7:00
Son of Sultide v Hot Pies	8:00
Tuna's vs Mortar Forkers	9:00
Dromagnons vs Return of Panic City	10:00
Cooke Court 3	
Euler's Oilers vs Ramoids	7:00
The Big Unit vs The Unknowns	8:00
Terr III Renegades vs Front VI Rimlicker's	9:00
Front J N B N vs Terr IV Nighthawks A	10:00
Cooke Court 4	
High Bailers vs Golden Dinos	7:00
Bouncing Babes vs Morning Stars	8:00
Terr VII Fiveskin vs Cent. VIII Eight Balls	9:00
Terr. II B vs Cent. VIII Scrunt Haven	10:00
Broomball	
East Rink	
Pioneer XIV vs Technocratic Cowboys	5:10
Kryptor Kids vs Stoners Texas Toast	6:05

Delta Sigma Pi Brunos vs The Frozen Flounders	6:15
Take Ten vs Hathaways Hooligans	7:15
Ronnie Rhythms vs St. Paul Sludgers	8:25
Zoom Brooms vs Pioneer Receivers	8:25
Territorial 6 "keystones" vs A.G.R.	8:35
Charlies Lightweights vs Terr. IV Nighthawks A	9:35
Theta Chi vs Frontier IX Frolicking Chicks	9:45
US vs The Jets	10:45
Starlet Commandos vs Rockies	10:55
West Rink	
Turkeys in the Straw vs The One & Only	6:05
Ruggers vs First Ladies	6:15
Delta Theta Sigma Tigers vs Flowering Spikes	7:00
Sigma Nu Serpents vs Zen Buddhists	7:25
Gambles Soup vs Harold Edwards	8:25
Linguistics vs Ore Dogs	8:35
Pioneer XIII vs Phi & Friends	9:35
Triangle Broomballers vs Jim Rockford P.I.	9:45
Nazgus vs Sig Ep Stompers	10:45
Peons vs "Alias Whatever"	10:55
Men's Ice Hockey	
Williams Arena	
Blades vs Oak Street Bullies	6:30

Chi Psi Red Dogs vs Graduates II	6:40
Unknowns vs T.W.A.T.	7:40
Fa-Cue vs Ace Puck	7:50
Beta Dragons vs Buddha's Bangers	8:55
No Stars vs Zip Foilers	9:05
Blitzkrieg vs Sigma Chi Dogs	10:05
AGR Cherry Tigers vs Arubaluba	10:15
Stick It vs Andy's Angels	11:20
Sigma Phi Epsilon vs Kappa Sigma Reds	11:30
Co-Rec Volleyball	
St. Paul Gym	
North Court	
L.A. All-Nighters vs Rewo I	6:15
Delta Theta Sigma Tigers vs Flowering Spikes	7:00
Zoogal Mass vs Undecideds	7:45
The One & Only Too vs International No Stars	8:30
Forgetters vs RRM Club	9:15
South Court	
Fighting Bezoars vs To Be Announced	5:30
Old and New vs AGR Rho-Mates	6:15
PDA Faction vs The One And Only	7:00
Whip Its vs St. Paul IV	7:45
Three Fourths vs Chainsaws	8:30

Co-Rec Volleyball	
Morris Hall	
Gym 151, Court 1	
Flying F.I.S.T.S. vs Mini Max	6:30
Team Dissention vs We Tried	7:15
Naughty Bits vs Renegades	8:00
Squatters Rights vs Cent. IV Fourmost Weretuna	8:45
Gym 151, Court 2	
Special Exports vs ACACIA	6:30
Randy's Riff-Raff vs Wrecking Crew	7:15
SAE Bi-Lions vs To No A-Vail	8:00
FCA vs Superior Gemelli	8:45
Gym 153, Court 1	
Pros & Cons vs Polymorphic Macrocycles	6:30
For Sure vs OFSA	7:15
Carloaders vs Mighty Chondria	8:00
CST Stompers vs CST Stumblers	8:45
Gym 153, Court 2	
N.U. Alums vs Sand Dabs	6:30
The Untouchables vs Second Try	7:15
Molley Crew vs Toppers	8:00
Three H vs Air Heads	8:45

WINTER THE MINNESOTA FORUM 1980

AFTERNOON LECTURE SERIES

What is Structuralism? An Interdisciplinary Perspective

225 Smith (Chemistry) Hall
East Bank Campus
University of Minnesota
Wednesday, January 16, 3:30 p.m.

LINGUISTICS
Anatoly Liberman
Professor, Departments of
German and Scandinavian

Sponsored by the College of Liberal Arts, the Graduate School, the Minnesota Center for Advanced Studies in Language, Style and Literary Theory, the Department of Slavic and East European Languages, the English Department, the German Department, the Department of French and Italian, the Department of Spanish and Portuguese, the Linguistics Department, the Anthropology Department, the Department of Scandinavian Languages, the Psychology Department, and the Institute of Child Development in cooperation with the Minnesota Forum, West Bank Union.

SKI COLORADO
VAIL • WINTER PARK • KEYSTONE
from only \$312 air & land
4 & 7 Day Packages
Departing Weekly
JAN • FEB • MARCH • APRIL 1980
Call NOW For Reservations
and Information

Jake Hoeschler
Pro skier, former US Ski Team
member, Advisor to President's
Council on Physical Fitness.

JAKE HOESCHLER SPORTS TOURS, INC.
6607 Eighteenth Ave. So., Minneapolis, Mn.
(612) 861-2300

SALE!
SWEATERS
\$25.90 to \$99.90

FREE PARKING

378-1442 **Ri Johnson** 920-5450

DINKYTOWN EDINA

IT'S UNDERGROUND!

The Outdoor Store Has Moved
New Earth-Sheltered Location
Under Buford Avenue
Access through Student Center
X-C Ski Packages

Fiberglass ski with injected foam core	\$69.83
Fiberglass ski with Spruce & Birch wood core	90.08
Hickory wood ski with lignostone edges	83.33

All packages include:
Normark Ski Boots (all leather uppers)
Sparta Tonkin Poles
Normark Standard 3-pin Bindings
X-C rental \$3.50 per day

THE OUTDOOR STORE
a buying association

Annual Membership	Room 4, St. Paul Student Center	Mon.-Fri.
\$2.00/student	Open to all U of M Students.	8 a.m.-5 p.m.
\$4.00/faculty & staff	Faculty & Staff	373-1404

ASK THEM WHY

Ask a Peace Corps volunteer why he teaches business marketing techniques to vegetable farmers in Costa Rica. Ask a VISTA volunteer why she organizes the rural poor in Arkansas to set-up food co-ops. They'll probably say they want to help people; want to use their skills, be involved in social change, maybe travel, learn a new language or experience another culture. Ask them:

AT WILSON LIBRARY TUNNEL
JANUARY 16, 17 1980.

PEACE CORPS **VISTA**

HAIR CUTS

HAIR CUTS \$10

MEN OR WOMEN—SAVE \$2 ON
HAIRCUTS OR PERMS WITH THIS AD.
HAIRCUTS REG. \$12, PERMS REG. \$27
NO APPOINTMENT NECESSARY
OPEN EVENINGS 531-8300

W. & O. SALON
FOR HAIR

classifieds

rates & info

- Classified Deadline: 2:30 p.m. the day preceding publication
- Cancellations: Cancellations will be accepted until 2:30 p.m. of the day preceding publication
- Cash Rates: 1 day \$.95 per line; 2-3 days \$.85 per line per day; 4 or more consecutive days \$.80 per line per day

Apts Furnished

BR duplex-sublet 2/15-8/31/80
dry, gar, 2bks to StP Campus,
50pls util, no pets. 644-6189 5-9pm.

BR part furn apt avail Jan. 15 in
Dinkytown. \$385/mo. Call 378-0938.

turn off, \$190, 15 min from W Bank.
Avail Feb 1. 340-0030 or 546-2322.

Close to U & loop Lg effs. from \$189-
199 Winter special. 378-2036

Apts Unfurnished

2220 Franklin E. Lg 1BR, pool,
jacuzzi, sauna, dshwr, and prkg.
balc, avail 2/2. \$275 & \$20 prkg.
Hi paid. 370-0719. Keep trying!

ST. ANTHONY PARK NORTH
2BR apt in older home, refrige &
stove incl. \$300/mo. incl util.
644-7169 aft. 5

FIFTEENTH STREET WEST
Studio apartment in turn-of-the-
century building features beautiful
birch woodwork oak floors and
original brass light fixtures
\$170-220 870-7878

15TH STREET WEST 3XX
Gigantic 4BR apt, charm, hrdwd flrs,
sunny, windows, view of Loring prk.
Choice! \$390 Also 1BR rent
free for caretaking couple. 871-7643
338-8522

MEADOWBROOK MANOR
2 BR townhouses \$290-\$305 Avail
now. Bev. Rental office-6860 Excel-
sior Blvd. No pets. 938-6320
938-6320 918-6329

Lg remod effs & 1BRs in Stevens Sq.
or Loring/Guthrie area. \$150-185.
Bus to U or dntwn, quiet bldg, no
lease. Eff and 1BR at 8704266, eff &
1BR at 938-4050, eff at 874-9555.

New Townhouse

Portland Ave S- 2 miles to U. Lg
2BR, no pets. \$325/mo & heat.
Avail immed. 872-1752.

PARK POINTE
St. Paul on Hamline, near Como. 1 &
2 BR. Avail immed. Elevators, heated
garage, HBO. 646-8883

17TH AVENUE SOUTH 2306
1 BR, fully cptd, adult security bldg,
on bus. Close to U of M. 722-5319 or
920-0400

BLOOMINGTON SOUTH 2726
EFF & 1 BR, cptd, adult security
bldg, off st prkg. Avail immed. 721-
2539 or 920-0400

MINNEHAHA 3455-57
2 BR \$315 On bus, off st prkg,
carpeted, AC, adult security bldg
722-0350 after 3pm.

713 8th Ave SE. 2 1/2 BR in older apt
bldg, newly painted, dining rm,
hdwd flrs, laundry. \$395, avail
immed. Ms Wah 925-2812.

Clean 1 BR, 7508 Wentworth S.
Near bus, \$275 util paid, sundeck,
Feb 1 869-5278 late

Sharp, lrg 3BR, hrdwd flrs/crpt,
frplc, bath/shower, off-street prkg,
2701 Delaware SE. \$450, 546-4562.

CEDAR AVE SOUTH 2805-13
1 & 2 BR. Off st prkg, adult security
bldg. Avail immed. 920-0400

BREWSTER 2026-2030
1 BR, walking distance to St. Paul
campus. Off st prkg. 646-8315

10TH AVE S 25XX Near U, spot-
less, quiet, charm 1 BR. No kids/pets.
871-5938 or 338-8522

Nice, lrg 3BR apt avail immed. \$230,
ht incl, kitchen, living rm, bath &
shower. 821 E 21st St. Drop by eyes.

3 BR townhouse within walking dis-
tance to St. Paul campus. \$495 plus
util. 644-7101

Univ Ave-8 blocks from U. 1BR to
sublet. Carpet, refr, stove, ldry. \$255.
Call 378-9641 or 644-0199.

Lg 1BR nr Guthrie & U express bus.
Heated prkg, fireprft, quiet, sec
phone & laundry. 874-7111

1BR, sunny & nice, new crpt
& appliances, walk to U, sec phone &
ldry. \$230/mo. 722-6945.

Eff, \$185/mo, walk to U, new crpt &
applnces, sec phone & lndry. Cozy.
Food coop in basement. 722-6945.

Prospect Park-5 Min to U, avbl 2/1,
7 rms on 2 flrs, 2 baths, nat wdwk,
\$420/mo. incl heat & gas. 824-0377.

SUNNY 1BR apt, sublet, new lease
6/1, Brewster nr St. Paul cmps,
\$230/mo incl. heat. 644-9361 aft 4.

1911 Park lg 1BR \$160 no pets sec
sys. ref. 374-4176

2500 Pleasant Ave S-Lg 2BR QUIET.
No pets or children. 824-4439

6th St SE-1BR, \$225 plus electric.
Avail immed. 941-3361 or 881-3848.

1100 COMO 1 BR, close to
U of M, off st prkg. 378-3216

Walk to U, 5th St SE. Eff apt shr bath
w/1. all util pd. Indry. \$165. 331-9124.

2 BR apt, stove & refrig. 2100 14th
Ave S. \$225, 559-0999 & 888-8824.

5th St SE- 1BR apt, \$245/mo. AC,
prkg, quiet. Avail Feb. 1. 636-6515.

EFF near St. Paul campus
\$190 647-0561

2 BR apt within walking distance of
St. Paul campus. \$260 644-9162

Lrg 1BR apt 5 blks frm St P campus.
\$275/mo util inc. Call now. 645-1951

2BR 40th Ave NE, air-cond, crpt, bus
to U, \$260, Avail Feb 1 788-6638

Midway, 1BR, quiet. No pets, no
kids. \$220, 870-1381

1010 15th SE Lg 1BR, bus, \$265,
Call 623-0264 or 922-8913.

1022 15th Ave SE, lrg 1 BR, remod,
avil Feb 15, lease, \$240/mo, 378-2510.

1022 15th Ave SE, lrg 1BR, compl
remod, avl 2/1, lease, \$230, 378-2510

Univ Ave SE Lg 1-2BR, new paint,
ldry, prkg, \$235-\$330 378-2309.

Lrg 1BR apt, Pros Park, near U,
\$214/mo util inc. 378-3084 aft 5pm.

Polk st ne 1717 2BR 10 min to U avbl
2/15 \$215 789-1473/755-7343

Duplex & Houses

Clean New Townhouse-3BR, fully
carpeted, fireplace, washer/dryer,
dishwasher, patio, features a
disposal, double garage, pool, & for
your convenience...snow-removal!
No pets, prefer average crime fighting
family who believes in Truth, Justice
and the American way. Serious in-
quiries only. Wayzata area, \$495 plus,
379-9618 eyes.

1 BR upr, nr W Bk, oak flrs, sunny-
Heated. \$185 2/1 339-1759/331-1438

Lk Calhoun 4BR, \$445 plus util,
Call 546-3200, Jim D or Margaret

Duplex by owner, 3112 Cedar Ave
South, \$54,900, remodeled. 724-0829

Near the U, 3 BR plus lower duplex,
garage, small pets OK, 699-8245.

955 Weeks Avenue SE, 3BR, newly
remodeled. Call 721-2108.

1710 Fremont Ave N, 3 BR, prkg,
close to dntwn on busline. 529-3771

3BR hse nr WB, furn, oak flrs wdwk
\$450, avbl now. 339-1759 or 331-1438

22nd Garfield S, Lg newly remod 4
plus BR, \$475 plus, gd loc. 699-5353

FREE INFORMATION ON OVER 4,000 APARTMENTS APARTMENT CENTRAL 379-8851

The Minnesota Daily is responsible only for the cost of the first insertion of an incor-
rect ad. Each insertion of an ad is proof of publication and it is the responsibility of the
advertiser to check the accuracy of each insertion. Corrections will be accepted until
2:30 p.m. Monday through Friday.

Innsbruck North Townhouse, 2BR,
1 1/2 baths, central air, dble garage,
assume 8% mortgage, by owner,
\$68,500. 574-1336 or 781-8642

Franklin Ave SE 13xx (near U of M
hospital), small 1BR upper duplex,
\$185 plus electric, available 2/1, no
pets or kids. 789-2834

1093 12TH AVENUE SE
2 BR, DR, LR, kitchen, bath &
shower. Full basement. Screen porch.
\$290 Feb 588-5491

35xx Minnehaha, 2plsBR, crpted,
appl, lndry, gar, nr U & bus, avl 3/1,
no kids/pets, \$350&utils, 724-9332.

22nd St E 1013, large 2BR, LR, DR,
Good condition, adults, no pets, \$200
plus util. 926-6840

Recently renovated 2 level duplex apt-
4BR, 2 sep living areas. \$495/mo.
Avail Feb. 1. Call 435-8357pm.

20XX Russell N Mpls, 3BR immedi-
ate occupancy, qualified renters only.
Victor Realty Co. 522-5986

1810 13th Ave So, Nice lg 2 BR, den,
AC, range, frig, rugs, part furn, prkg,
nr U of M, \$325, adults 870-9092

3953 43rd Ave So, 4BR, garage,
brand new furnace & central air,
enclosed porch, call 822-3058.

Small 1BR house for 1 or 2 South of
Lake St. nr river. \$200 util. pd.
724-4697 aft. 5pm.

Very lg 4BR hse by Franklin Ave.
bridge. Nd 4-5, \$600. util. pd. Avail
Feb. 1. Call 690-5510 mornings.

516 5th Ave SE, Lg lower 3BR with
frplc. All crptd, \$375 plus 861.

781-6583 or 379-8681.

M/F to share 4BR with 2. 27th &
Chicago bus. \$100 & utils. 871-3374.

IF to shr 2BR w/F, CSW, AC, balco-
ny, \$134, avail 2/1, 339-0062.

Duplex & Houses

Clean New Townhouse-3BR, fully
carpeted, fireplace, washer/dryer,
dishwasher, patio, features a
disposal, double garage, pool, & for
your convenience...snow-removal!
No pets, prefer average crime fighting
family who believes in Truth, Justice
and the American way. Serious in-
quiries only. Wayzata area, \$495 plus,
379-9618 eyes.

1 BR upr, nr W Bk, oak flrs, sunny-
Heated. \$185 2/1 339-1759/331-1438

Lk Calhoun 4BR, \$445 plus util,
Call 546-3200, Jim D or Margaret

Duplex by owner, 3112 Cedar Ave
South, \$54,900, remodeled. 724-0829

Near the U, 3 BR plus lower duplex,
garage, small pets OK, 699-8245.

955 Weeks Avenue SE, 3BR, newly
remodeled. Call 721-2108.

1710 Fremont Ave N, 3 BR, prkg,
close to dntwn on busline. 529-3771

3BR hse nr WB, furn, oak flrs wdwk
\$450, avbl now. 339-1759 or 331-1438

22nd Garfield S, Lg newly remod 4
plus BR, \$475 plus, gd loc. 699-5353

F/M
pretty
lbrk
lndry
ing of

RC

J F ns
Area.

M/F
w/2,
UM c
distr
M/F
part
sauna
pref.

IM to
car g
1/5 ut

3 M/
ly M.
Own

IF ns
apt,
camp

1/2 C
Chate
or Eli

F to
Isles.
Avail

2F to
matu

Th &
Chris
& ph
facils

2 M/
U, w
175(d

1 or
with 2

Kerry

F to s
10 mi

172-2

F ns
Mtk
pls 1/

1 F n
room
utils.

F/M
Own
U, no

1 to
sunr
imme

1 F/
with
plus u

F24pl
hrdw

699-8

Matu
frplc,
nr Gu

1 M/
\$95/n
after:

F ns
nr U.
& mo

F to
bus, 5

Mat
w/sa:

M/F
ln. \$1

M ns
\$150/

M/F
Midw

F to s
utils,

M/F
houm

M/F
utils.

M to
\$125

Perso
smk

2 BR
near U

F/M
\$140

ONE
w/ma

M to
\$107/

F ns
avail

M/F
bus li

ROOM
behin
includ

St. P
for s
Make

Walk
w/1.

Club
imme

Sleep
busin

Rm in
kitch.

Lg br
Mpls.

Large
\$80/m

M do
Avail

F to r
bus nr

F dor
vail in

597

Wedr

F/M nonsmoker 22 plus to share pretty 3BR db w/2 near seaward area, 1blk from W River Rd, hrdwd flrs, Indry, extras. \$125 or \$150 (depending on BR) inc ht. 724-9172

ROOMMATE WANTED

1 F nsmkr to share 1 BR apt in Seward Area. Near UofM. Call 339-3750

M/F to share sunny 3BR upp duplex w/2, S Mpls, lg rooms, south light, UM express & 4 dwtwn, nr uptown district, \$117 plus. 823-2344

M/F to share 2BR apt w/1M, own Br, part furn, \$150/mo pl utl. Pool, sauna, on hwy & bus line. Nsmkr pref. New Brighton. 636-4371

1M to shr w/4 5BR Apt near UofM. 4 car garage, very modern. \$112 plus 1/5 util. 378-3160. avbl. Feb 1.

3 M/F to shr nice hse w/3 resp, friendly M. Good loc. Avail immed or Feb. Own rm, \$75. 871-7162, 690-0565.

IF nsmkr to share 2BR w/1F, new apt, 2 baths, Indry, near St Paul campus. \$185. 571-7679 or 636-3872

1/2 Christian M to shr 2BR apt w/2. Chateau, rent neg. Call Al 379-1214 or Elias 373-2676.

F to shr 3BR w/2F. Lg nr Lake of Isles. On U express bus. Nsmkr. Avail immed, \$110/mo. 823-5076.

2F to sh lg H w/2 clean quiet So Mpls mature friendly people 825-7152 or Th & Sun eve. 3-3214

Christian F to share house w/3. \$100 & phone, off street pkg, laundry facs. 331-2749. Avail immediately.

2 M/F 19-21 to shr 3BR duplex near U, wash/dry, pkgng, bus, extras. \$125-175(dep on BR) inc heat. 623-1859

1 or 2 M/F wanted to share house with 2M. 10 min walk to WB. Kerry 370-0767 after 5pm or wknds.

F to share 2 BR house in NE Mpls. 10 min from U. \$130 mth plus utils. 372-2049 after 5 781-8960

F nsmkr shr new 4BR hse w/2 F's nr Mtka/hwy 100 & exp bus to U, \$160 plus 1/5 util, 376-5569W, 825-8403H.

1 F nsmkr to shr nice hse w/2F, own room, off Como, on bus, \$108 shr utils. Call 378-3042

F/M 23 pls shr lrg friendly hse w/4. Own rm, Indry, piano. Walk or bus to U, nonsmkr, \$85 & util. 724-1836

1 to shr lg classic 2BR 4plx w/1F, sunrm, DR, Indry, nr bus & U, avbl immed. \$112.50/mo. Laura 724-3010

1 F/M wanted to share 5BR house with 1F & 3M. Own room \$110/mo plus util. Call 378-3258.

F24pls to shr 2BR dplx w/1. Wdwd, hrdwd flrs, MacGro, \$125 plus. 699-8856, 331-1596 Cindy.

Mature Adult shr lg house w/3, frpic, ntl wd; piano, dhwthr, Indry, nr Guthrie. Call eves 374-9492.

1 M/F to share with 4 in house. \$95/month & util. No smoke, call after 5pm. 2116 Como 331-5349.

F nsmkr veg to shr very nice 5BR hse nr U. Hrdwd flrs, washer/dryer, sauna & more! \$150 inc utils. 378-9441

F to shr hse, Selby-Snellings X. On bus, \$100 utils inc. 644-1382.

Mat indep st to shr 2BR beaut hse w/sauna, bus to U. 823-3571

M/F to shr lrg hse in So Mpls on bus line. \$140/mo comp 823-4567.

M nsmkr to shr hse nr Como Park \$150/mo utl inc furn 646-0806.

M/F to shr hse. Own rm \$90 pl utl. Midway St. Paul. Call 644-5126

F to shr dplx w/2F & child. \$117 & utils, on busline. 871-5991

M/F to shr hse w/M & F. Nr Lk Calhoun. Nr bus in. \$145, 824-3843.

M/F to share hse. Own rm, \$125 plus utils. Call 721-2330 after 5pm.

M to shr hse Pros Pk, own room, \$125 plus, furn, walk to U, 379-0902

Person to share 3BR house with 2M, nsmkr, on bus, \$110 plus. 920-5035

2 BR dplx spacious, furn/unfurn near U, prkg & bus line. 379-7719

F/M to shr lg old hse nr lakes. \$140 plus. Kathy 824-2820, 373-1248.

ONE to share 2BR Dnkytwn apt w/male grad \$110/m 331-4078.

M to shr 1BR lg apt in Pros Pk. \$107/mo call 378-3084 aft 5pm.

F nsmkr to shr w 2f own room on bus avail 2/1 374-9271

M/F to shr lrg hse w/6 coed nr U & bus line. \$116/mo 379-2366

Rooms

1308 5th ST SE ROOM for woman. Quiet house behind Jersey Joes. \$70-\$75/mo includes all utils. Call Jane 623-1037

BAILEY HALL CONTRACT St. Paul. 2 mens contracts; new wing, for sale immediately. Convenient. Make us an offer. Bruce 647-9818 after 6pm

Walk to U, 5th St SE. Eff apt shr bath w/1, all utl pd. Indry. \$165. 331-9124. Club kitchen, Indry facs, avail immed. 1009 University SE. 822-6426

Sleeping rooms near University, on busline. 331-7181.

Rm in coed hse, Christian only, shr kitch. \$85/mo. 378-3081.

Lg basement rm plus, prkg home. SW Mpls, ex bus U & dwtwn. 922-2063.

Large clean slpg rm, no smoke, men. \$80/mo. 411-SE 7th Ave. 378-0748

M dorm room in Frontier Hall Avail immed. Call Huy 373-6982.

F to rent nice attic in lg beaut hse or bus nr U. \$140 incl utils. 824-8940.

F dorm room in Middlebrook Hall. Avail immed. Call Cindy. 376-6612.

Sleeping rooms near West Bank 397 north. 332-9700

2 str M nsmkr to shr nice 4BR NE Mpls home w/2. 1 blk to 52 campus bus. \$150/mo includes, Indry, dshwash, & utils. Dave 788-0237

501 FIFTH ST SE Coed room in beautiful old mansion. Very charming, original details. Nick 331-7618, 378-2311

1 to shr conscious low dplx, 3BR w/ stud couple. Hrd wd flrs, walk to U, nsmkr & veg pref. \$75/mo. 1918 15th Ave S, call 870-8331.

1 BR in 6 BR hse, dining, living, fireplaces, all carpeted. Avail Feb 1, 7 blocks from U, 208 5th Ave SE. \$130. Call Doug 378-1690.

1214 4th St SE, room near U, utils furnished, club kitchen, men \$120 month. 521-4755, 338-4895, 331-9119

528 14th Ave SE, nr U of M. Furn rm, club kitch, utils furn. Men. \$125. Call 521-4755, 338-4895, or 379-7931.

Double rooms in Fraternity. Great house! Great cook! \$590/qtr. 1829 University. 331-3004

Grad student-private room in nice duplex. Vegetarian kchn, \$125/mo, St Paul, on Univ. Ave bus. 644-5037

1318 SEVENTH ST SE Dbl/sgl co-ed room. Utl pd plus kitchen. Very clean. Greg 331-4944, 378-2311

1312 7th St SE 998 room in co-ed house, 2 kitchens, very clean. Mary, 379-7591 or Ron, 378-0387.

3 blks to UM, 1317 6th st ROOM & share kitchen, \$110, for 2 persons. only \$55 more. Priv parking or grg.

Homes For Sale

DAN DOLAN

497 Curlew Walk to U of M from this expansive 3BR home. Walk-out rambler styling allows maximum use of space. Features include: 3 frpics, kitch w/built-in, main floor family room w/glass doors to deck, 2 1/2 baths, 2 car garage, \$98,000. Call Mike Jambor 698-5412 or 690-1777.

477 Curlew It's Perfect in both location and condition, including all features necessary for gracious living. Vaulted ceilings in living room & in the generous kitchen, 2 frpics, 2 or 3 BR's, office space, 2 car garage & a 16 ft by 32 ft in-ground pool for everyday vacationing in the summer. \$84,900. Call Mike Jambor at 698-5412 or 690-1777.

Specialists in Fine Homes

Kenosha Condominium 93% Interest Rate

A 1904 brick, 3 story building that has been totally gutted, redesigned and restored with contemporary living space. 1, 2, and 3 BR models, all featuring fireplaces, recessed lighting, sculptured ceilings and walls. Also, some two story plans with private entrances. Located on Summit Hill with easy access to U of M and both downtowns. \$60,900 to \$86,900. Call Mark Christiansen at 297-8046.

IMPECCABLE This lovely home has been maintained to perfection. Two (2) crackling fireplaces, 3 bedrooms, rec room, finished in knotty pine, also compl kitch set-up down, dbl garage, hrdwd floor throughout, screened 17 x 17 porch, cntl air, plus much much more. Walking dist to St Paul Campus. For priv showing call: 574-9406 Chuck Maiwurm 488-5414 THORPE BROS. INC. 4931 Central NE MLS Realtors

Accounting

ACCOUNTING ADMINISTRATIVE ASSISTANT

PEAVEY, a diversified food and specialty retailing company, has an immediate opening for an Administrative Assistant in our General Accounting area.

This individual will provide administrative support to the Corporate and General Accounting Controller by coordinating the preparation, distribution and filing of financial reports required by the Securities and Exchange Commission as well as other corporate financial reports.

Key qualifications for this position are a four-year degree in Accounting. Regulatory reporting experience is desired but not mandatory.

We offer a competitive salary plus excellent company benefits. Please submit comprehensive resume including salary requirements to Mary Goldstein.

Peavey

730 Second Avenue South Minneapolis, MN 55402 An Equal Opportunity Employer M/F

1 BR apt 19th floor Riverview Tower by 10th Ave Bridge. Excel view of river gorge. Sale by owner. Call Bob 373-1696 or 333-0035.

Help Wanted

An alternative to the 40 year rut. 698-8361

Activities Assistant, socially motivated individual to work in progressive nursing home for geriatric and mentally ill residents in N Mpls. We are looking for a caring leader, flexible hours, full time, some weekends. Call Highland Park Nursing Home, Chuck or Janis 521-3679.

Assistant program director to work with 12 MR adults in independent living training program. PT eve & wknds. Sandy or Hans 545-8757.

Domestic & child care (6 & 9 yrs) late afternoons M-Th, 3-4 hrs/day. 374-1876 before 8:30am or Eves.

Desire babysitter-1 child, on Como Avenue near Ag campus. 645-2339

Bartender PT nights, call 332-9700.

Bicycle assembly some exp req full-time, Mar-Aug 30, \$4.75. Call, write, stop by for info & apply by Jan 31. Freewheel Bike Coop 3336 E 25 St:722-3232:MYC Rte 20:

Ad stud. wanted as PT assistant in ad department of national mail order firm 10 min from campus 729-2345 Jane

Ad stud. wanted as PT assistant in ad department of national mail order firm 10 min from campus 729-2345 Jane

Ad stud. wanted as PT assistant in ad department of national mail order firm 10 min from campus 729-2345 Jane

Ad stud. wanted as PT assistant in ad department of national mail order firm 10 min from campus 729-2345 Jane

Ad stud. wanted as PT assistant in ad department of national mail order firm 10 min from campus 729-2345 Jane

Ad stud. wanted as PT assistant in ad department of national mail order firm 10 min from campus 729-2345 Jane

Ad stud. wanted as PT assistant in ad department of national mail order firm 10 min from campus 729-2345 Jane

Ad stud. wanted as PT assistant in ad department of national mail order firm 10 min from campus 729-2345 Jane

Ad stud. wanted as PT assistant in ad department of national mail order firm 10 min from campus 729-2345 Jane

Ad stud. wanted as PT assistant in ad department of national mail order firm 10 min from campus 729-2345 Jane

Ad stud. wanted as PT assistant in ad department of national mail order firm 10 min from campus 729-2345 Jane

Ad stud. wanted as PT assistant in ad department of national mail order firm 10 min from campus 729-2345 Jane

Ad stud. wanted as PT assistant in ad department of national mail order firm 10 min from campus 729-2345 Jane

Ad stud. wanted as PT assistant in ad department of national mail order firm 10 min from campus 729-2345 Jane

Ad stud. wanted as PT assistant in ad department of national mail order firm 10 min from campus 729-2345 Jane

Ad stud. wanted as PT assistant in ad department of national mail order firm 10 min from campus 729-2345 Jane

Ad stud. wanted as PT assistant in ad department of national mail order firm 10 min from campus 729-2345 Jane

Ad stud. wanted as PT assistant in ad department of national mail order firm 10 min from campus 729-2345 Jane

Ad stud. wanted as PT assistant in ad department of national mail order firm 10 min from campus 729-2345 Jane

Ad stud. wanted as PT assistant in ad department of national mail order firm 10 min from campus 729-2345 Jane

Ad stud. wanted as PT assistant in ad department of national mail order firm 10 min from campus 729-2345 Jane

Ad stud. wanted as PT assistant in ad department of national mail order firm 10 min from campus 729-2345 Jane

Ad stud. wanted as PT assistant in ad department of national mail order firm 10 min from campus 729-2345 Jane

Ad stud. wanted as PT assistant in ad department of national mail order firm 10 min from campus 729-2345 Jane

Ad stud. wanted as PT assistant in ad department of national mail order firm 10 min from campus 729-2345 Jane

Ad stud. wanted as PT assistant in ad department of national mail order firm 10 min from campus 729-2345 Jane

Ad stud. wanted as PT assistant in ad department of national mail order firm 10 min from campus 729-2345 Jane

Ad stud. wanted as PT assistant in ad department of national mail order firm 10 min from campus 729-2345 Jane

Ad stud. wanted as PT assistant in ad department of national mail order firm 10 min from campus 729-2345 Jane

Ad stud. wanted as PT assistant in ad department of national mail order firm 10 min from campus 729-2345 Jane

Ad stud. wanted as PT assistant in ad department of national mail order firm 10 min from campus 729-2345 Jane

Ad stud. wanted as PT assistant in ad department of national mail order firm 10 min from campus 729-2345 Jane

Ad stud. wanted as PT assistant in ad department of national mail order firm 10 min from campus 729-2345 Jane

Ad stud. wanted as PT assistant in ad department of national mail order firm 10 min from campus 729-2345 Jane

Ad stud. wanted as PT assistant in ad department of national mail order firm 10 min from campus 729-2345 Jane

Ad stud. wanted as PT assistant in ad department of national mail order firm 10 min from campus 729-2345 Jane

Ad stud. wanted as PT assistant in ad department of national mail order firm 10 min from campus 729-2345 Jane

Ad stud. wanted as PT assistant in ad department of national mail order firm 10 min from campus 729-2345 Jane

Ad stud. wanted as PT assistant in ad department of national mail order firm 10 min from campus 729-2345 Jane

Ad stud. wanted as PT assistant in ad department of national mail order firm 10 min from campus 729-2345 Jane

Ad stud. wanted as PT assistant in ad department of national mail order firm 10 min from campus 729-2345 Jane

Ad stud. wanted as PT assistant in ad department of national mail order firm 10 min from campus 729-2345 Jane

Ad stud. wanted as PT assistant in ad department of national mail order firm 10 min from campus 729-2345 Jane

Ad stud. wanted as PT assistant in ad department of national mail order firm 10 min from campus 729-2345 Jane

Ad stud. wanted as PT assistant in ad department of national mail order firm 10 min from campus 729-2345 Jane

Ad stud. wanted as PT assistant in ad department of national mail order firm 10 min from campus 729-2345 Jane

Ad stud. wanted as PT assistant in ad department of national mail order firm 10 min from campus 729-2345 Jane

Ad stud. wanted as PT assistant in ad department of national mail order firm 10 min from campus 729-2345 Jane

Ad stud. wanted as PT assistant in ad department of national mail order firm 10 min from campus 729-2345 Jane

Ad stud. wanted as PT assistant in ad department of national mail order firm 10 min from campus 729-2345 Jane

Ad stud. wanted as PT assistant in ad department of national mail order firm 10 min from campus 729-2345 Jane

Ad stud. wanted as PT assistant in ad department of national mail order firm 10 min from campus 729-2345 Jane

Ad stud. wanted as PT assistant in ad department of national mail order firm 10 min from campus 729-2345 Jane

Ad stud. wanted as PT assistant in ad department of national mail order firm 10 min from campus 729-2345 Jane

Ad stud. wanted as PT assistant in ad department of national mail order firm 10 min from campus 729-2345 Jane

Ad stud. wanted as PT assistant in ad department of national mail order firm 10 min from campus 729-2345 Jane

Ad stud. wanted as PT assistant in ad department of national mail order firm 10 min from campus 729-2345 Jane

Ad stud. wanted as PT assistant in ad department of national mail order firm 10 min from campus 729-2345 Jane

Ad stud. wanted as PT assistant in ad department of national mail order firm 10 min from campus 729-2345 Jane

Ad stud. wanted as PT assistant in ad department of national mail order firm 10 min from campus 729-2345 Jane

Ad stud. wanted as PT assistant in ad department of national mail order firm 10 min from campus 729-2345 Jane

Ad stud. wanted as PT assistant in ad department of national mail order firm 10 min from campus 729-2345 Jane

Ad stud. wanted as PT assistant in ad department of national mail order firm 10 min from campus 729-2345 Jane

Ad stud. wanted as PT assistant in ad department of national mail order firm 10 min from campus 729-2345 Jane

Ad stud. wanted as PT assistant in ad department of national mail order firm 10 min from campus 729-2345 Jane

Ad stud. wanted as PT assistant in ad department of national mail order firm 10 min from campus 729-2345 Jane

Ad stud. wanted as PT assistant in ad department of national mail order firm 10 min from campus 729-2345 Jane

Ad stud. wanted as PT assistant in ad department of national mail order firm 10 min from campus 729-2345 Jane

Ad stud. wanted as PT assistant in ad department of national mail order firm 10 min from campus 729-2345 Jane

Ad stud. wanted as PT assistant in ad department of national mail order firm 10 min from campus 729-2345 Jane

Ad stud. wanted as PT assistant in ad department of national mail order firm 10 min from campus 729-2345 Jane

Ad stud. wanted as PT assistant in ad department of national mail order firm 10 min from campus 729-2345 Jane

Ad stud. wanted as PT assistant in ad department of national mail order firm 10 min from campus 729-2345 Jane

Ad stud. wanted as PT assistant in ad department of national mail order firm 10 min from campus 729-2345 Jane

Ad stud. wanted as PT assistant in ad department of national mail order firm 10 min from campus 729-2345 Jane

PERMANENT PART OR FULL TIME OPPORTUNITIES

Perfect for college students, housewives, etc. Earn while you travel to and from every job in company vehicle. No experience necessary. You will receive paid training to be part of largest national inventory service. Rapid merit and scheduled pay increases. COME IN OR CALL: 2 locations.

546-5588

WIS WASHINGTON INVENTORY SERVICE

688 Wayzata Blvd. Minneapolis 33 E. Wentworth West St. Paul

an equal opportunity employer m/f

COULD WE BENEFIT FROM EACH OTHER?

We need individuals who either already are persuasive or would soon like to be. We are in the business of telemarketing prestigious publications and we pay our representatives very well. Our staff works in a comfortable downtown office. We dress casually and our hours are flexibly arranged. If this learning opportunity appeals to you, we can benefit each other. Call us at 338-8198 and let's talk about it.

Counselor-Weekends Wknd positions avbl in group home for MR teens and adults. Gain experience, have fun, and earn \$5 546-1969

Counselor Challenging house parent position available for energetic couple in group home for 6 MR adults. 1 FT, 1 PT, rm, brd, sal & benefits. 546-1969.

PART TIME residential counselor to work at facility for MR near Minnetonka/Excelsior. Work includes planning and implementing program plans, recreational activities, teaching self-help skills. Salary \$4.00-\$4.75/hr. Every other weekend. Contact S. Wilcox. 474-5974.

Part time bindery help needed in print shop close to Stadium Village. Call 331-3350

BOUNCER Mr. Nibs, 2609 26th Ave S, Mpls BUILDING CUSTODIAN PT approx. 20 hrs/wk \$3.50/hr, prof. person living in western suburbs. For further info. Call Tom Anderson: 473-0234.

Bursting Machine Operator PT position to operate machine that sorts and separates computer documents, hours 5am-9am M-F, Call for apt Cindy Sowden 646-9433 Grain Terminal Association 1667 Snelling St Paul

BUSBOY, HOSTESS, COOK apply Improper Fraction 378-3838. 712 Washington ave.

WANTED: BUS HELP 4-7 M-F \$3 per hour, University location. Call 331-5027.

FLORIDA NEW MEXICO TEXAS are

some of the places our organization will visit on business trips. If you are 18 or over, would like to gain business experience & are free to travel call Ms. Wind between 8:30am & 4pm.

938-8326

HELP! Live in-We provide rm, board, sal in exchng for aft school sitting. Wkdays from 8-3pm plus many eves & wknds free. Must have car. 454-1254.

Family seeks warm, happy person to care for 2 boys 6 & 3, Tues & Thurs 11:30-5 in home nr Lk Isles & busline, good salary, call 377-8878 eves.

Clean; companion to 10 & 12 yr olds, 3-4 afts per week, 3-5 pm, \$4 bar, 296-1143 days or 377-6109 eves

Cleaning help wanted in home every Wed, 10am-1pm. Near St. Paul campus, \$4.50/hr. 645-2897.

CLERICAL PART TIME If you have good finger dexterity, we will train you to operate our proof machine. Hours are 4pm - 10 or 11pm/3,4, or 5 evenings per week. Call 370-2233.

MARQUETTE SERVICE CORP. 400 Marquette Avenue Suite 560 Minneapolis, MN Equal Opportunity Employer

Clinic Assistant Full Time in Family Planning Clinic. \$3.35/hr plus Benefits. Phonework, greeting patients, & chartwork. Will train, must be able to accurately record data. Contact Jodi, Planned Parenthood 698-2401.

COCKTAIL WAITER/ESS aftn & eve positions open, apply aft 3pm at Schieks, 115 S 4th St. 341-2332

Cocktail waitress-Tony's M & M bar, 356 Monroe

Couple needed, as hse parents for 6 MR kids. Jan or Mary at 489-0745.
Couples & individuals for a business of your own. You pick the hours, we train. Call (715) 246-4745 collect.

CHECK ENCODERS NIGHTS

First Bank of Minneapolis has immediate openings for check encoders on our "C" shift, 11pm - 7am. Figure aptitude required, 10 key experience helpful. We can offer competitive salaries and excellent benefits. Reduced parking rates and shift differential paid. Call today for interview.
370-4090 or 370-3750

CHECK SORTERS NIGHTS

First Bank of Minneapolis is currently seeking individuals for our data center. Duties include operating a check sorting machine and performing preventative maintenance. Lifting up to 20 lbs. required. Hours available; 3:30pm - 12 midnight or 11pm - 8am. Shift differential paid. Call today for interview.
370-4088 or 370-3750.

First National Bank of Minneapolis
120 South Sixth Street
An Equal Opportunity Employer

BUILDING SECURITY

We are accepting applications for building security in the University campus area, many of which are study positions. We offer the most flexible part-time schedule in our industry. Around your class schedule when you are available.
For more information
Call Durwin Ward at 854-8200

DEADLINE

ORIENTATION LEADERS APPLY NOW FOR 1980
Do you want to work with other students, learn a lot about the U, have a real part in planning the orientation programs, be part of a select group, gain experience and get paid-and have you been thinking of applying this year?
DO IT BEFORE JAN. 16
The U is a diverse community and we need a diverse group to represent it. Many kinds of experience needed, so don't hesitate-get those applications in now. If you need more info pick up a job description in 324 CMU or 190 Coffey or call 373-4404. All eligible students urged to apply.

COPY MACHINE OPERATORS

Lg downtown law firm needs 2 copy machine operators for Xeroxing and collating, 5-9pm. Exc benefits. Dean Anderson at 340-2793. EOE, M/F.

ADMIN AID

Challenging and exciting position in a health and social service agency. Experience in general office work, including typing and shorthand. Call 874-5566 or apply at M.A.O., 1801 Nicollet. EOE.

GUARDS

Burns Int. is hiring part and full-time. Earn \$3.20 to \$4 to start, dependant on experience and location. For more information call 831-3526.
Burns International
Equal Opportunity Employer

MOTEL DESK CLERK

FT Mon., Wed., Th., Fri., 11am-7pm, T. 9pm-5am Imperial 400 Motor Hotel 331-6000

QUALITY ASSURANCE TECHNICIAN

We are seeking a qualified individual to add to our quality assurance team. The individual will be responsible for checking and evaluating packaging components as well as monitoring the quality of finished consumer products. The individual should have good communication skills and be familiar with a laboratory environment. College, vocational training, or equivalent work experience will be considered. Send resume to director of research and development, or call 448-4181 for interview.

MINNETONKA, INC.

Jonathon Industrial Park
Chaska, Mn. 55318. EOE.

DOUGH ROLLERS WANTED
Will train, 7am to noon shifts avail, good \$\$, Perry's Pizza, 425 13th Ave SE 378-0913.

COLUMBIA TRANSIT

School bus drivers needed for immed. openings. Flex. Hrs. Ideal for students shuttle bus runs daily, mornings and afternoons from Columbia to UoM. Paid training program. Union benefits, apply in person at 1102 N Snelling or call 645-9137
Equal Opportunity Employer

JOBS FOR YOU!!!

Temporary clerical jobs. Available now. Experienced or not. We have work for you! Willingness and responsibility count. Jobs vary from one day to several months. Top pay. Come in today and work tomorrow.

Selective Services

1900 Hennepin Ave So
Mpls. Mn 874-9774

Drivers needed to deliver Sweet Potato music magazine on Fri., Feb. 1. Must have van or pick up. Approx. 6 hrs work. Call Phil 827-8273.

ELECTRONICS TECHNICIAN
Flexible hrs, approx 1/2 time. Smith Hall location, tech school required. Contact Gene Luckfield 373-2343

F Personal attendant Mon-Fri 8am-12pm must be dependable \$4.50/hr 222-4545

Grad acc. stud. needed for audit work Dan 542-7900/377-4302

GUARDS

Busch Inc. is hiring guards for permanent, FT & PT jobs, ideal for students. Progressive agency. Call 336-4908

Hotel

ROLL & SALAD SERVER
We have an immediate part time opening for someone interested in learning fine dining service. This position involves prep & service of salad & rolls. Hours are 5pm-Midnight, 2 nights/week. If interested, please apply in person M-F, 9-12.
SHERATON RITZ HOTEL
315 Nicollet Mall
Equal Opportunity Employer M/F

Hotel

DESK CLERK
We have an immediate opening in our front office for a desk clerk to work Friday & Saturday nights. Experience preferred, but will train. If interested, please apply in person M-F, 9-12.
SHERATON RITZ HOTEL
315 Nicollet Mall
Equal Opportunity Employer M/F

PT keypunch position available in medical clinic on West Bank. Key to disc. Flex. 2-3 hrs/day. Call 336-5796.
Smiley's Point Clinic
2200 Riverside Ave

Luncheon waiter/waitress wanted M-F 11:30-2 332-9700

Mature PT help wanted for gas and convenience stores. Must be able to work some nights and weekends. Competitive wages with advancement opportunities. Open 7 days a week, apply in person to either: East Hennepin easy stop 949 E Hennepin, or Broadway Easy Stop, 1617 E Broadway.

300 JOBS PAID DAILY IN FULL

No experience necessary. Work the days and shifts you choose. Pay range from \$3.25-\$3.75 per hour. Report 6:00 a.m. first shift, 2:00 p.m. second shift or call 222-6311.

LABOR POOL

530 St. Peter at 10th.
Minnesota's Largest
Temporary Industrial Service

Men! JOBS! Women!
Cruiseships! Sailing Expeditions! Sailing camps. No experience. Good Pay. Summer, Career. Nationwide. Worldwide. Worldwide! Send \$4.95 for APPLICATION/INFO/REFERENCES to CRUISEWORLD Box 60129, Sacramento, CA 95860
Mother's helper wanted, 2 children, 6 & 4, own room & bath, mornings "free". New York City area trans pd salary neg. Call collect 914-273-9045.

Students/homemakers
NURSING ASSISTANTS for nursing homes. Flex hrs & wknds. Up to \$4.75/hr, avlb now. 835-2017

NURSING ASSISTANTS
Full & part time, flex hrs. Pick your own days. Top pay scale.
LaSalle Convalescent Home
1920 LaSalle 870-8611

NURSING ASSISTANT
Modern residential facility for physically handicapped young adults needs nursing assistants to aide with rehab program. Primary resp. for physical care. As member of team approach, you will need to communicate well & work with minimal supervision. \$4.25/hr. FT eves & night shift open. Call Barb Scharff 588-0811, 11-3pm, Courage Center
3915 Golden Valley Road
Golden Valley, MN 55422
Equal Opportunity Employer.

OFFICE

Clerks, typists, and secretaries needed for temporary jobs in the NE and SE areas. Many jobs available each week. Call

STIVERS TEMP PERSONNEL

Downtown 338-6275 or
Columbia Heights 341-4119
EOE

Organizer-researcher for community development monitoring prog. Start 2/1 \$1000/mo 6 mos. resume by 1/25 to Monier 19 e 26th st. E.O.E.

PART-TIME PHONE CLERK

Answers incoming circulation phones & works on customer service projects. Requires typing & good phone and organizational skills, flex hours are scheduled brwn 2pm-8pm Mon-Fri.

ADVERTISING

Major duty is typing & proofing classified advertising copy. Requires good typing skills & use of CRT terminal. Hours are 3pm-7pm Mon & Tues, & 12-9pm Wed-Fri.

Both positions offer company benefits & accessibility to public trans. If interested, phone personnel at 372-4075 for an interview appt. 425 Portland Ave So.

The Minneapolis Star/
Minneapolis Tribune
Equal Opportunity Employer

Typist/Receptionist

The Minnesota Daily needs a front desk receptionist/typist, 1-9 p.m. Sunday, 4:30-9 p.m. Monday thru Thursday, \$3.50/hour to start. Good typing, clerical, telephone and public contact skill essential. For information call 373-3381, ask for Susan. Must be registered at U of M. Apply at Daily office, 10 Murphy Hall. Application deadline Friday, Jan. 18.

The Minnesota Daily is an Affirmative Action/ Equal Opportunity Employer



Part time Sales and Merchandising Opportunity
Looking for an opportunity to earn extra dollars while learning sales skills--this part time opportunity may be ideally suited for you. Well known consumer product manufacturer with a wide variety of name brand confectionary products is seeking a candidate who will work 10-15 hour per week calling on campus and near campus retail outlets.
\$4 per hour
Please express your interest by calling collect 612-934-3096 L. A. McLean 715-549-6584 Mr. J. R. Mullins
We are an Equal Opportunity Employer M/F

\$5-10/hr part-time

Good communication skills, 4-day work week, training provided.
Call or apply between 2-4 pm
2025 Nicollet Ave S, Suite 204
Call 870-4055

PHONE WORK \$4 HR PLUS BONUS TO \$7.50/HR PART TIME 10-2 or 4-8

Near Guthrie, on bus. Call 377-7965.

PROOFREADER

Temporary opening in proofreading Dept., 1/15 thru 4/15, mornings and/or afternoons for person with good grammar, punctuation, & 10 key skills.
Call Mary Ellen 339-0771.
Ernst & Whinney
1800 1st National Bank Bldg.
Equal Opportunity Employer M/F

PT rental position, 10-20 hrs weekly, Westbank complex, Sat. a must, typing nec. Pat 338-8871 for an appt.

PT YOUTH LEADERS NEEDED
at the Southdale YMCA to deal with coed 3rd-6th grade afternoon activity groups in area schools. Call Dana Sorenson at 893-3704 to apply

WEEKEND RECEPTIONIST
To work in hospital X-ray dept every Sat 8am-1pm plus Sun 12 noon-8pm. Call for an appointment, Personnel Dept at 871-3700, ext 1197.

MOUNT SINAI HOSPITAL
2215 Park Avenue Mpls
Relief night staff to be on call on premises in half-way house for mentally ill adults, few nights per week. Mature responsible warm person who can handle emergencies and assist residents in meeting their personal goals. Hours 6pm-8am. In-service training provided. Call Mary Ann Bush at 645-9424
People Inc, Snelling & Hewitt EOE-AFF ACT

WINFIELD POTTER'S
St. Anthony Main's newest saloon & dining room is now hiring. All positions available. Apply in person only, 6-9pm.
378-2660
Restaurant

WORK RIGHT AT ARBY'S

Starting pay \$3.25-\$3.75. Free parking while attending classes. Flexible scheduling, free uniform & discount meals. Apply Now!
University & Washington, 331-2757.
Person to do cleaning Mon-Sat. Near U. \$4/hr, 45min/day. 378-3081.

SECRETARY

Property management comp, variety of duties. Type 60 WPM. Competitive salary. St. Louis Park location. Call Ms. Munzer at 920-0400.

SALES AUDIT NIGHT OWL

Immediate full and part-time opening available, 10 p.m.-6 a.m. Good figure aptitude and adding machine helpful; but will train. Duties include sorting, counting, and batching sales media. Enjoy a liberal employee discount.

Apply Employment Office
11th Floor Downtown
DAYTON'S
Equal Opportunity Employer

Part Time, flex hrs, on busline to U. Apply at Wallgreens 733 Marquette.

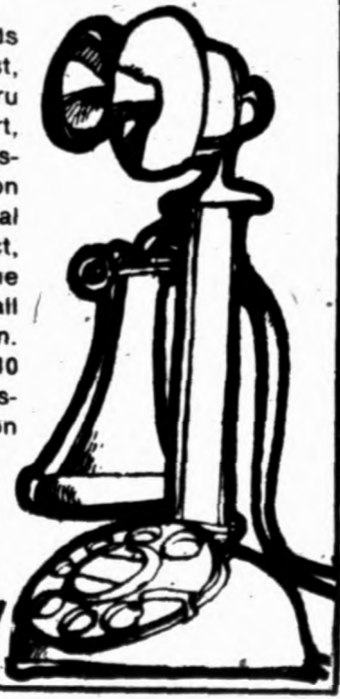
PART TIME \$4/HOUR

We're located near the U. Flexible hours. Good pay with NO SELLING!! Call for an appointment.
623-1144

receptionist

The Minnesota Daily needs a front desk receptionist, noon to 4:30 pm Monday thru Friday, \$3.30/hour to start, typing preferred but not essential. Answer 30-button switchboard and light clerical duties. High public contact, fast-paced, good phone skills. For information call 373-3381, ask for Susan. Apply at Daily office, 10 Murphy Hall. Must be registered at U of M. Application deadline Friday, Jan. 18.

The Minnesota Daily is an Affirmative Action/ Equal Opportunity Employer



The Minnesota Daily is an Affirmative Action/ Equal Opportunity Employer

Experienced ski instructors needed for JCC of Mpls Ski Club, over 18. Sundays January thru March. Call Neal or Jeff eves 544-9064

STOCK HELP, flexible PT hrs avail. Stock coordination & some heavy lifting. Amluxen Fabrics, 333-6393

STUDENTS

Help the elderly and earn cash. We have PT/FT positions available. Flexible hours to fit your sched. \$3.50/hr. Call 874-5525 or contact M. A. O. 1801 Nicollet. EOE.

Longfellow Community Center wants tumbling teacher for children ages 4-11, beginning and advanced levels. Saturdays 10:15-1:00, \$4.00/hr. Call Terry at 729-1677. Longfellow Community Center, 3435 36th Ave So.

Teach math, cooking, reading, etc. to MR adults, PT eves in S Mpls center. \$5/hr & fringe. Call Nancy, 871-2101. E.O.E.

Temporary coordinators for health agency. 1 wk contractual fee \$50-\$150, primarily evenings. Should have means of transportation 870-1500

TEMPORARY EMPLOYMENT
With charitable non-profit organization for vigorous public-spirited individuals to contact community minded people in MN by phone. 871-0462.
Equal Opportunity Employer

Needed PT typist, 15-20 hrs/wk, flex hrs, convenient Southdale loc., exc opp for student or homemaker, for interview call Judy Block 925-2150. Equal Opportunity Employer M/F.

Typist: fast, accurate, willing to learn new system. An opportunity to grow with an established graphic arts company. Part time, full time, near U of M. Call Gary at 646-6318

TYPIST

The Minnesota Daily has an immediate opening for a typist, three nights a week, 5:00 p.m. to approximately 10:30 p.m. You must be a U of M student. For more information call Mary or Julie at 376-5463, or stop by 720 Washington, Room 361 and fill out an application.
Equal Opportunity Employer M/F
Affirmative Action Employer

Typist needed immed at Children's Home Society. Close to St. Paul campus, 15-20 hrs/wk, hrs flex. \$3.25/hr. Call Joan Szymanski at 646-6393

VOLUNTEER

DRUG COUNSELORS
Wanted for Pharm House Hotline. Training starts Wed., Jan. 23, 7pm. Call 870-7088. Credit Poss.

SCHOOL BUS DRIVERS
Ideal for students. Morning and afternoon routes in Minneapolis, St. Paul, and Roseville.
For more information call:
866-3349 Mpls.
631-8910 Roseville
777-2319 St. Paul

ST. PAUL & SUBURBAN BUS CO.
Equal Opportunity Employer

Volunteers needed for half-way hse library project, flex hrs, Ben 721-6327.

Waitress/Waiter
Cocktails only. Mr. Nibs
2609 26th Ave So, Mpls

Babysitter needed mornings in our home or yours 2 yr old girl. 378-0938.

Typing
THESIS TYPING EXPERTS
w/over 21 yrs in thesis typing
TYPING.....Ph. D's, MA's, Plan B's.
Also Manuscripts, Resumes, Statistical and Scientific work.
Pica/Elite/Proportional Type
WORD PROCESSING Xerox 800/850
COPYING.....BINDING
Visa/Master/American Express
WEST BANK TYPING SERVICE
1530 S. 6th St., No. 2307...338-3337
\$.75/page BA English editing exp. 522-4958.

Typing done in my home. IBM Selectric pica. Audrey 890-1208.

TYPING. FAST. RESPONSIBLE & EXPERIENCED. MARY 698-6182

TYP, EXP, NR U.341-4389
1st Class Typing. Catherine 823-2386
Quick Typing, Mollie 331-7632
EXP/Prompt THESIS/MS 926-0071
Prompt, exp. Mrs. Lebow 938-7633.

Typing. Affordable rates. 823-9263
Typing. Affordable Rates 823-9263
Prompt, exp. Mrs. Lebow 938-7633.

Fast, accurate, IBM 645-4843
EXP TYPING IN MY HOME 926-8270
KAREN & COMPANY 824-8564
Pro-typing: all kinds, 644-128

Editorial Help

the Minnesota Daily needs an assistant Arts and Entertainment editor. Excellent editorial and organizational skill necessary, also working knowledge of all the arts. Must be able to work flexible hours M-W and be registered at U of M. Apply at 10 Murphy Hall - A&E editor's office with resume and clips of past published work. Deadline for application: Tues, Jan. 22 For information: call 373-3381, ask for Susan.

The Minnesota Daily is an Affirmative Action/ Equal Opportunity Employer

PROFESSIONAL TYPING
Theses, Ph.D.'s, MA's, Term Papers, Manuscripts-Work Guaranteed-IBM Electronic **RUSH JOBS 831-1282**
Jane Dallinger, Scott Edelman, WRITING, RESEARCH, EDITING, most subjects, (no ghost writing for classes) 824-9467 or 825-8162

SPEEDY DEE DEE
20 yrs exp typing Theses-Plan B's Manuscripts-Term Papers-Correspondence IBM Cor Select **RUSH JOBS 337-8002**

ERICKSON-LUNDBLAD
331-1502 BINDER 331-2911
Theses Binding \$6.00-\$8.50
1308 5th St SE

TYPING TO SUIT YOUR NEEDS
(APA, Campbell, MLA, Turabian)
Xeroxing-Cassette transcription
SANDRA: 925-5215

EXPERT TYPING
Manuscripts, theses, resumes, term papers, correspondence.
Jackie 522-8039.

THESES-PHD'S, MA'S all styles, Term Papers, Manuscripts, Resumes, Nr U, exp, rush ok, 338-4144

Dissertations-Manuscripts Experienced & Accurate
Karen Daninger 633-2154

EXPERT TYPING
Better than a Selectric
Dennis 522-2395

THESES-Manuscripts, medical, legal, mailings. Work guaranteed. 24 hr serv. Marie 925-3366

CUSTOM TYPING
Theses, Plan B's, Resumes, Papers Speedy Service ALICE 560-8905

1st-Class Typing Catherine 823-2386.

Helpful Services

WHY BE A FOOL?
COLLEGE IS A WASTE OF TIME. You need wealth to survive inflation. Free information on starting a career as a landlord.

VANGUARD NEWS
P.O. BOX 16364
ST. PAUL, MN. 55116

STADIUM BARBERS
Hairstyling for men & women Mon-Fri 8:30-5:30, Sat 8-5. Walk in or appts at 331-6579. At 308 Oak St. across from Campus Theater.

CAMPUS BARBER STYLISTS
Hairstyling for men and women at 1435 Cleveland, next to the S.A.P. Appts: 644-5021 or walk in.

ABORTION IS LEGAL
in Minnesota. Now every woman has the Constitutional right to choose. Free pregnancy testing. Alternate Counseling. For complete family planning services contact Midwest Health Center for Women. A Non-Profit Organization. (612)332-2311

HARVARD BARBERS
Across from the Football Stadium 604 Wash Ave SE. Styles&Perms,men & women. Rk Jhirmack Prod. 379-2851 open Mon-Fri 8-5:30, Sat 9-5

HANDMADE WEDDING BANDS-We can work together off your own design-James Hunt workshop 331-1920, home 378-3780

SUPER EARNING LEARN SPANISH IN ONE MONTH
Without Homework
Call 636-9460 or 533-2223

SAVE ON WEDDING
Order FLOWERS & INVITATIONS from: Flowers by Gretchen 823-2439

WAKE UP! A personal telephone wake-up service. We will wake anyone at any time. Just call Sue 824-3655 or Linda 822-2431.

GOLDEN RAZOR
Styling for men and women Coffman Union 373-2410

Dress-making, alterations, repairs, custom knitting, wedding gowns. The Stichecker, Dinkydale 623-0586 \$35 weekly guaranteed, work 2hrs at home. for free brochure: LW, 2803 Bryant Ave No. Mpls 55411.

International Barbers
1323 SE 4th Street 331-9820

CARPENTRY
Remodelling, roof repair, painting, sheet rock. 722-1314

UNWANTED PREGNANCY
Abortion and Alternative referrals 874-8809

CAR STARTING-TOWING
24 hrs, fast service to U. 729-0055.

GAS MILEAGE POOR? I can improve your car's mpg. 698-7081

DINKYTOWN TAX SERVICES
379-3034

Tired of alarms? Wake-up service, \$5 monthly. Call 521-0097.

HELP IN ENGLISH for foreigners Ask for THE TUTORS 646-7108

Custom Sewing: Alterations, repairs, etc. Leather & textiles. 729-5590 aft 6

WE PAY CASH!
For Scrap Gold:

Old Jewelry Rings Watches, Etc. Lindblom's Jewelry 327 14th Ave SE 331-3268

CONFIDENTIAL FREE PREG TESTING
378-1920 (on Campus)

UNPLANNED PREGNANCY
Free preg. testing. Birthright 338-2353

CAR STARTING
24 hr Prompt Service 722-1314

FREE FACIAL-Great complexion.
JoAnne 331-8570 PM except Mon.

Moving? Need help? Call J. R. Movers (low rates) 823-4567.

For Sale
Sewing Machines
Scratched in shipment-new deluxe zig-zag sewing machines. Will make button holes, overcast, & monogram. No attachments required, \$78. Also, several reconditioned open arm machines. Make offer.

Necchi Sewing
7609 Lyndale at 494. 861-7129

The FURNITURE BARN
DOWNTOWN WAREHOUSE
AT 233 PARK AVE.

Low overhead allows us to sell high quality furniture and bedding at pre-inflation prices-Drop in-Browse around-see for yourself! Here are just a few sale prices:

KING KOIL
Mattresses or Box Springs
Twin size matt. extra long\$29
Full size innerspring\$48
Queen size Box spring only\$48
King size all 3 pcs. just\$118
Hide-a-bed matt. all sizes\$39
Sofabeds sleeps 2\$98
5 Dr. chest maple or walnut\$48
Recliners, now low as\$79
4 Pc. bedroom group\$188
Sofa & matching chair\$188
Coffee & lamp tables\$24
Floor lamps while 10 last\$19.98
Foot stools & ottomans\$9
Metal Wardrobe was \$89\$69
Odd dinette chairs\$10
Unpainted desk or chest\$39
Bunkbeds w/2 mattresses\$148

TRADE IN AND RENTAL RETURNS
Sofas & loveseats low as\$48
Upholstered chairs low as\$29
Chaise Lounge\$49
Wood dining table 3 only\$49
Hospital bed w/mattress\$249
Wringer washer Speed Queen like new\$139
Wood dining chairs 12 only\$19

FURNITURE BARN WAREHOUSE STORE
233 PARK AVE.
Open Daily 9-9
Saturday 9-5:30, Sunday 12-5

MAYA MARKET
WOOL & ALPACA SWEATERS
Ponchos, hats, mitts, scarfs, gloves Socks, shawls, blankets, rugs, coats 377 14th Ave SE-Upstairs Dinkytown

LEARN TO COOK TOFU
Information and delicious recipes for TOFU entrees. \$1.00 DOTTE Box 4043, St. Paul, MN. 55104

Suede 1/2 length jacket-womens sz 13-14 w/ fox trim hood. Exc cond. Best offer, call Jo 379-0747 eves.

Snow tires, B78-13 (7.00-13), \$35/pr. 331-3287

Fixing cabinets-large, sturdy cardboard, \$2 a single. Call 331-6817.

Black/white TV, 9x12 crpt, study dsk, \$30 ea. Dbl bed, \$160. 379-0284.

ELECTRIC Typewriters \$150 & UP
Kirk 617 SE 14th Ave Hrs9-5

TV B/W Port \$35, Color Portable \$135-Good Cond. 636-5179 aft 6 pm.

La Bihouterie-handcrafted wedding bands-affordable diamonds 722-4185

Musical Notes

STEREO SALE
FISHER SPEAKER SALE
FISHER T. TABLES \$75
CASSETTE DECKS \$100
SONY SPEAKERS \$50 PR

MARANTZ, SANSUI, FISHER, TECHNICS, SONY, JENSEN, SANYO, TOSHIBA, NIKKO SALE AND MANY OTHERS

STEREO SPEAKERS, RETAIL \$318, NOW \$100 PR.

STEREO SPEAKERS, RETAIL \$518, NOW \$200 PR.

STEREO RECEIVERS WITH 40 WATTS RMS PER CHANNEL REG. \$349.95 NOW \$149.

15" WOOFER SALE
STEREO SPEAKERS WITH 15" WOOFER, 2 TWEETERS, MIDRANGE SPEAKER, IN BEATFUL CABINETS REG. \$299 NOW \$150 PR.

ALL EQUIPMENT NEW IN FACTORY CARTONS WITH FULL WARRANTY.

COLLEEN'S PLACE 861-2074
6021 Lyndale Av. S.
Hrs 12 noon to 7:30pm, M-F
10am-3:30pm Sat. & Sun.

SINGERS
Baritone soloist needed for University area church, chamber music by Palestrina, Bach, Ives, etc. for quartet and choir. Paid position. Call 331-1768

For Sale: Pioneer SX-780 receiver, Genesis 2 speakers, Steve 644-6019.

Yamaha CR-420 receiver, 1 yr old, \$230/best offer 376-6126 Paul

TEAC 4010 3 motor 4 head bi-dir-rec reel dk, \$200/trade? 920-2876

For Sale: Marantz 1060 stereo amplifier, like new. \$85. Dan 699-2710

ALVAREZ GUITAR 5043, \$75
BASS SPKRS-2-15", \$90, 822-3610

Reconditioned pianos, 623-0777

Good Used Stereo Gear, All types LOW PRICES

STEREOLAND
Mon-Thurs 9-9 Fri & Sat 10-5
2325 Hennepin S. 377-1772

MUSIC THEORY for GUITAR
COURSE, sec 1 Wed, 1/16 8pm;
sec 2 Thurs 1/17 8pm, Coffeehouse
Extempore. Call 721-2707

PIANO AND THEORY LESSONS
Nationally certified. BS Juilliard;
MM Northwestern U. All ages, but
adults a specialty. 374-2353

BAND-for weddings and parties.
Good variety of dance music.
Harry or Mark Strobel 835-4372

Photography
16mm BOLEX H16 fine film-camera,
incl metal case & various lenses \$450
will sell on time pymts 871-9451

Minolta SRT-201 w/nl lens &
Rokkor 135mm telephoto. \$200.
Dan 699-2710.

A Bridal or Portrait Image
LOT ONE IMAGES 646-2153
Student Discounts Available

WEDDING PHOTOGRAPHY
Tender Misties-Glowing Candelites
Starting at \$95.00. Call 729-0378 Eves.

CAMERA REPAIR-Fast Service
Amateur & pro. 566-1285 eves, aft 5

WEDDING PHOTOGRAPHY
As low as \$99.00 729-2420, Ken

Ski and Snow

SKI BWCA
Feb 15-18. \$30 food and lodging.
Call 373-1051

Skiers-Round trip to Steamboat
Springs, Feb. 12-18. Two seats avail.
\$50 each Call Chris at 623-0081.

Ski Vail- New Vail duplex for rent.
Call for info M-F, 378-0800.

Scott Superlight boots, lg shell, brand
new, used 2X. Best Offer 938-9707

Wanted

WANTED JUNK
Rep Cars/Trucks
TOPSS
Free towing, 24 hr service
560-9444 522-1972

ANYTIME

CASH FOR CARS
JUNK OR REPAIRABLE
379-2276 560-3262

\$40 CASH REBATE
DICK'S AUTO PARTS
TURN IN YOUR JUNKER
Free Towing 784-8620

Credit cards, had trouble getting
them? Encountered discrimination?
Daily reporter seeks info. Call
Martha 373-3381.

Tutor for Latin 1102 and 1103.
Call Noel 823-3315 or leave message

Autos For Sale

74 AUSTIN MARINA, \$850 or best
offer. 4dr, auto, AM-FM, 23 mpg.
Eves 292-9132 or 376-3433 Alan.

72 Catalina 2 door, 88000 mi, RUNS
GREAT, \$900/best offer 872-0949

77 Chev Impala 4dr, V8 350, extra
sharp, \$2950 or best offer. 631-9111

1963 Chevrolet Nova AT 6 cyl. good
tires call Marc 588-1688

69 Dodge Van, 6 cylinder stick.
45,000 original miles, some rust, great
runner, \$500. Burr 378-9452.

71 Duster, 6 cyl. auto good cond.
\$600. Call 771-6062 eves only.

68 Ford XL, it runs, could be a good
car. \$150. 822-1375

74 Ford pickup & topper, 3000 on
new 6 cyl. excellent cond. \$2300
Call 340-0790 after 1pm

75 Ford 1/2 ton, 4WD, P5, PB,
radials. Good cond, must sell!
Call Terry, 646-2000

78 Honda Civic hatchback FWD reg
gas, 14M, \$3650. 435-7207 eves.

'75 Mustang II 46M, approx. 20 mpg,
4 sp stick, new starter, 2 door hatch-
back \$1400 871-8144

67 Plymouth Fury, Excel wtr start, gd
eng & trans, \$200. 331-3117/822-7732

71 Volkswagen-77000M, gd runner,
some rust. \$650. 824-2234 eves.

72 Volvo 164E 4DR, navy w/lt blue
interior. 472-3425 call aft 6pm or Sat.

1967 VW Beetle, 100M, \$350, runs
gd, 722-7414, wkend or wkday aft 5

1973 VW Beetle deal fell through, still
available must sell \$1100 934-0517

72 Plymouth Sat- fine cond, no rust,
\$850. 373-6865 aft 6pm.

73 Nova SS hatchback- V8, 3sp, AC,
86M, North Dakato car, no rust.
\$1500 or best offer. 454-1548.

73 Pinto- 43000M, 4sp, \$1200.
Call 472-6480 weekends only.

Auto Repair

RIVERSIDE SKELLY
Foreign & Dom. Car Repair
Brakes/Tune-ups/Overhauls
1919 Riverside Ave S 332-7712
The West Bank's BEST!!!

Import Rpr Eng Reblgd 645-2977

Rides/Passengers

Commuting from Rochester. Rides-
riders any pt. along Hwy 52. Leave
message for R. Stoekel in 115 Shev-
lin or call (507) 285-0495.

Rider wanted to share driving & ex-
penses to San Diego. Flexible 1st week
of Mar. Call Gail 8-4:15pm 298-3754

Travel

SPRING QUARTER
IN LONDON

Earn 12 credits through Extension
Classes and the English Department
while studying in England.

There will be an informational
meeting Jan. 16 at 7:30 in
Notie Library. Call 373-3039.

Administrative Fellow
Dept, Ext Classes. 65% time per
month. Appt will begin as soon as
poss aft 2/5, run thr Spr Qtr 80. Min
BA degree, must be in U of M grad
prog. For complete job description,
373-3039 ask for Gail.

SKI SPRING BREAK
All trips incl. 7 nights,
lodging, trans., 2 parties,
and free lessons.

1. ASPEN by AIR-\$315
6 day lift: add \$84, 3 day lift: add \$48
MAR. 22-29

2. STEAMBOAT by AIR-\$285
6 day lift: add \$78, 5 day lift: add \$65
MAR. 22-29

3. TELLURIDE by BUS-\$265
incl. 6 day lift.
Mar. 21 (p.m.)-30

Signup Mon. Jan. 15th \$50
deposit & \$5. mbrshp reg. for revs.
Bal. due by Feb. 15.

For info. & ques. call U of M
Ski Club Office, 378-4055

AIRLINE TICKETS
Immed Confirmation of Flights at
Airline Prices-Free Delivery U/M
The Travel Company 379-9000

BAHAMAS \$469
DAYTONA BEACH \$369

Spring Break
March 22-30

or more information call:
SAE
331-5986

JAMAICA \$489
THE TRAVEL COMPANY 379-9000

Lost and Found

Trotsky's LOST: Large male golden
retriever, near Murphy Hall. Call Do-
rothy at 373-3381, 333-4948 Reward

FOUND: Keys on dbl ring, 1/9, near
RR tracks on Wash Ave. 574-1421

Pets

Moving, must sell Old English Sheep-
dog, very affectionate. 822-7470

Announcements

GREEK WEEK

Save 20% on custom greek apparel.
Jerseys, T-shirts, Caps, Jackets,
ex. 1/19/80 Village Put-on-Shoppe
814 Washington Ave So 379-1888

BORED?
Become somebody
CUPC Needs coordi-
nators for many ex-
citing positions.
Applications are
being accepted in
220 Coffman or Call
373-7600 and ask for
Rae for more infor-
mation.

BIOENERGETICS
Exercise Groups
Emphasis will be on grounding
breathing, awareness of energy flow
within our self and while in contact
with others. Facilitated by 3rd year
student of Minnesota Institute of
Bioenergetic Analysis. Call 379-9316
and leave message. Sliding fees.

Information Session:
COLUMBIA
TODAY
Noon, Rm. 354 Coffman Union
Slide Show & Coffee
Int'l Study & Travel Center
40 Coffman 373-0180

AIKIDO
This Japanese martial art uses circular
movements to throw or pin attackers
non-aggressively. Men, women,
beginners, and advanced work together
to learn in an atmosphere of harmo-
ny and cooperation. Train with us
T & Th at 5:30-7pm, Begin Jan 22
207 North Stadium Tower \$5/qtr

Rabbi Arnold M Goodman (rabbi &
attorney) speaking on Ordination of
Widows as Rabbis in Context of
Jewish Legal Sources, (Halacha), (a
paradigm of how Jewish law handles
new issues.) Fri Jan 18th, Law School
rm 25, 12:15. All Welcome!

A KNEE DEEP AFFAIR
with
MICHAEL JONES

Come ready to
PAR-R-R-RTY
Jan. 18, 1980
Mississippi Rm.
3rd Floor Coffman Union

\$1.00 8:30 p.m.
DANCE

***** SELF-DEFENSE KARATE *****
Mons 7-9 pm, Marshall-U HS. SE's
original S-D course now in its 8th
year. Learn a skill, meet new people,
and have fun too. Starts Jan 21.
Call 376-4505 for details

Lutheran and Gay? God loves you
and so do we. Worship with Luther-
ans Concerned, Friday Jan 18 7:30
pm 1407 N Cleveland in St Paul.

FREE SHOW
At Midwest Mountaineering
Tonight 8:00 p.m.

Mountaineering and
Trekking in the Cuzco
Area of the Peruvian
Andes.

Slides and Talk by
Tom Hendrickson
309 Cedar Ave. So.

Daytona Beach-Air
\$369 Mar. 22-30 Motel/entertain. pkg
& more. Jim 457-8436, Greg 781-8269

Gay Self Defense
Class. 376-2722, 7-10 pm for info.
Hurting? Call 379-1199. Love Lives.
People caring for People.

MINI COURSES
COFFMAN UNION

LAST
day to register
1 a.m. to 5 p.m.
CNU Info Center

BROOMBALL BROOMS
Village Put on shop 814 Wash Ave SE

**YOGA MEDITATION: Group form-
ing; Sam 333-3455, 757-2461.**

**Eat, Drink and
get involved at the
CUPC OPEN HOUSE.**

Vice President for Finance **University of Minnesota**

Applications and nominations are invited for the position of chief financial officer of the University of Minnesota. The Vice President for Finance reports to the President of the University and serves with other University Vice Presidents as a corporate officer to advise the President on a broad range of issues.

The University of Minnesota has 57,000 students on its five campuses, an annual budget of \$650 million and investments of about \$180 million.

The Vice President for Finance has responsibility for the University's fiscal operations; physical planning, including space and construction management; support services and operations; investments and cash management; business administration; the legal department; and the University's fund-raising effort.

Position entails communication with students and staff of the University, its Board of Regents, committees and individuals of the state legislature and executive branch of the state government, other civic bodies, community groups and individuals.

Requisite personal qualifications include: flexibility, ability to handle quickly a range of diverse matters, and a humane concern for individuals. Successful experience as a line executive officer at a high level of responsibility in a complex organization. Understanding of the role of chief fiscal officer in a major teaching and research setting, and a fundamental commitment to the principle that executive officers exist to serve the University's educational purposes.


Salary commensurate with experience and qualifications.

Direct letters of application, with current resumes, and list of references to Dr. Carol H. Pazanda, Chair, Vice President for Finance Search Committee, Office of the President, 202 Morrill Hall, 100 Church St. S.E., Minneapolis, MN. 55455.

Review of applications begins March 1, 1980.

An Equal Opportunity, Affirmative Action Institution.

Kinko's Reproduces Faster



Now Open Sunday
Instant Passport Photos
Velo & Spiral Binding

206 15th Ave. S.E.
3rd Floor
Sun 11
Mon-Fri 9-5

Copies 4¢

BAKER FOR PRESIDENT
STUDENTS FOR BAKER

Help Get Out The Baker Vote!
Iowa Bus Trip To Help Organize
For The Iowa Precinct Caucuses

Leaves Twin Cities January 18
Returns January 20

Call Baker Headquarters For More Information:
612-647-9346

BAKER
Tough. Honest.
Right for the 80's.

Paid by The Baker Committee. A copy of our report is filed with the Federal Election Commission and is available for purchase from the Federal Election Commission, Washington, D.C. 20463.

the Hair Shaft

1302 4th ST. S.E. Dinkytown
(Across from Sammy D's)

Mon.-Sat.
331-3260

Campus Cobbler
321 14th ave s.e.
Dinkytown U.S.A.
Boots & Shoes

BOOT SALE

TWIN CITIES NEWEST ROCK NIGHT CLUB

NOW OPEN 7 NIGHTS A WEEK!

A ROCK & ROLL ALTERNATIVE

Duffy's

Jan. 16th
THE PHONES
Weds: Ladies Nite:
75¢ Bar Drinks 9 to 10 p.m.
and no cover for the Ladies

Jan. 17th, 18th, 19th
THE SUBURBS AND THE GROWNUPS

Jan. 20th
Soda
Sun: No Cover

Jan. 21th
Yipes
Mon: 2 for 1—9 to 10 p.m.

26th & 26th Ave. So., Minneapolis, 721-3301
Schedule subject to change
*No drink specials on concert nights

MINI COURSES
ST. PAUL STUDENT CENTER

SPECIAL INTEREST
Snow Shoe making
Beg. First aid & Personal Safety
Exploring Marriage Today
Photography
Sign Language

MUSIC
Guitar I & II
Flute
Harmonica

RECREATION
Alpine Mountaineering
Billiards
Bridge
Cross Country Skiing

DANCE & MOVEMENT
Aerobic Fitness
Ballroom Dance
Disco
Jazz dance
Wellness

Winter Quarter 1980
Mini-Courses
Registration, January 3-18
Program Office, Lower Level
St. Paul Student Center
8:00a.m.-4:00 p.m., Monday-Friday

INFORMATION and BROCHURES
373-1051

MINI COURSES WINTER '80

st. paul student center
board of governors

W
About
Wedn
called
Accor
socie

Fin

Editor's
two-part
federal
equality
athletic
look into
which m
cal fight
women'

By Lyn

Thousan
come an

nation sir
eral man
sexual dis
was passe
month, th
mentation

These gu
on Dec. 1
the myria
been rais