



## AEC to tell 15 smasher finalists

By MONICA JOHNSON

The University-Minnesota - co-sponsored bid of Rosemount for the atom smasher site should be among the top 15 finalists competing for the site, according to the state administration commissioner.

The Atomic Energy Commission (AEC) will announce the finalists next Thursday from a field of 98 bids, Commissioner Steven Quigley said.

Asst. Prof. Ronald E. Brown explained that the main purpose of the atom smasher is to discover "what a nucleus is and what holds it together." It smashes nuclei of atoms, he said.

The atom smasher the University has now, the "Tandem Van de Graph" smasher on the bank of the Mississippi River, below Piek Hall, uses 10 million volts of electron energy.

**THE ACCELERATOR** proposed for the Rosemount site would carry "hundreds of billions of volts," Brown said. This can be compared to the 12 volt battery in a car, he added.

Several of these bids were sent to the AEC after the June 22 deadline for applications, explained Francis Geisenhoff, director of research for the state business de-

partment.

**DULUTH ANNOUNCED**, last month, that it planned to make a late entry. Geisenhoff said that Duluth has not completed its qualification calculations at this time and that Duluth, like other late entries, will be subject to a penalty which "was not explained" by the AEC.

He also speculated that many of the late entries are submitted so that the sponsors can say they made an entry. The late entries will not have as good a chance of being among the 15 finalists because of the undefined penalty, he added.

**WILLIAM G. SHEPHERD**, University vice president for academic administration, explained that after the AEC chooses the 15 finalists these screened bids will be sent to the National Academy of Sciences (NAS). The NAS will then send a recommended choice back to the AEC for final approval, Shepherd said.

The selection process will probably take the rest of this year, according to Shepherd. This means that plans for the site and the estimated cost of the atom smasher can not be presented to Washington for congressional approval of the proposed smasher until next year, Shepherd said.

## U teaches techniques to instructors of blind

Practicing the basic techniques used by the blind while blindfolded is part of a four-week course offered this summer for teachers of young sightless children.

"We try to teach instructors how to lead the blind intelligently, to familiarize them with their environment and to give them specific directions. We practiced eating with blindfolds, bowled and dialed phones to learn what problems and frustrations the blind person faces," Lee Farmer, course instructor said.

Farmer explained that the basic purpose of the course is to teach instructors of the blind basic techniques of orientation and mobility for blind children and philosophy to help blind children to get along

with others and contribute to society.

**THE TEACHERS** will be working with blind children when they start school and with their parents before school, Farmer said. The teacher is in the middle of the child's education, working first with parents to teach them to help their blind children, then with the children in schools and later with a therapist when the student is ready for more advanced training, he explained.

This early training will prepare the student to follow a sighted person, a guide dog or use a cane, eventually, Farmer said.

**BASIC TRAINING** included

(Continued on Page 2)

## WMMR fall expansion eliminates beds in Union women's quiet room

By DEBBIE COLEMAN

In the future, tired women on the East Bank may have a rough time trying to find a place to sleep.

The 8-bed women's quiet room in the Union will be eliminated. And the 8-bed, reserved-for-physical-education-majors Siesta Room in Norris Gym might be eliminated in order to make room for needed office space.

**THE OFFICES** of WMMR will move into the quiet room this fall. This will put the office and broadcast studio of the campus radio station across the hall from each other. "The change will make things work out a lot better," according to Bruce Wilson, secretary-treasurer of the Union Board of Governors and CLA junior.

Explaining the Board's decision to eliminate the quiet room, Wilson said retaining eight beds to serve 12,000 or 15,000 women on campus seemed "hardly worth it and increasing office space seems to affect more people. We were trying to decide which was more important."

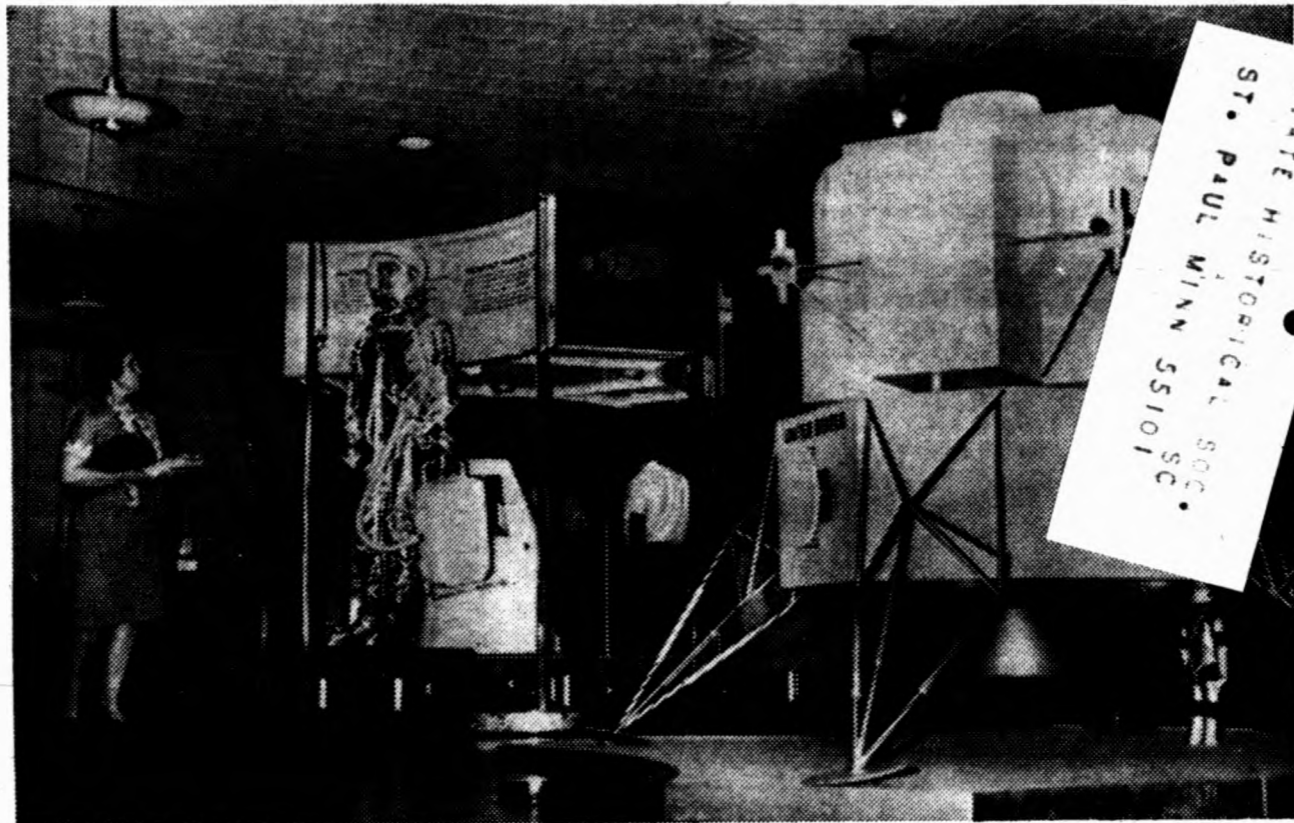
**THERE ARE** "no immediate plans" to move office space into the Siesta Room in Norris Gym, but there are "problems of office space in our building and we may be taking a portion of it," according to Dr. Eloise Jaeger, chairman of the women's physical education department.

Because the department's staff is becoming larger, it may have to take over the sleeping facilities, Dr. Jaeger said. If such a move were made, the department would "retain a couple (of beds) for emergencies."

**THE REMODELING** plans are "not definite," she emphasized. Financing and other factors must be taken into consideration before the department can make any official plans for expanding into the space, Dr. Jaeger said.

The lack of women's sleeping facilities "is a real problem on the campus and neither is there space in Norris Gym to accommodate all the women," Dr. Jaeger said.

There are sleeping facilities in women's lounges on West Bank.



## NASA space exhibit opens

"FLY ME TO THE MOON" could be the theme of the Space Science Instructional Resource Exhibit currently on display in the Union game room. In the right foreground is a model of the Lunar Excursion Module, a proposed moon flight vehicle.

A space suit is pictured to the left. The exhibit is open from 9 to 4 p.m. today and July 12-14.

## U invited to join corporation administrating atom smasher

The Atomic Energy Commission (AEC) has invited the University to be one of 34 schools who may administer the proposed high-energy atom smasher.

The University is one institution being considered as a site for the atom smasher.

William G. Shepherd, administrative vice president, represented the University at a meeting of schools on June 20 in Washington, D.C. The schools organized as a corporation under the title, "Universities Research Assn., Inc.," Shepherd said.

**HE EXPLAINED** that the corporation is "an institutional association and is not for profit."

Members drew up by-laws, listed founding institutions and decided each university would have its membership in the corporation approved by its governing body be-

fore the next meeting, this fall. The Board of Regents is expected to approve the University's membership.

**WHEN ALL MEMBER** schools report their approved membership this fall, the corporation will submit itself to the AEC for approval as the atom smasher administrative body. Shepherd said he expects the corporation will be accepted because the AEC would have to set up an administrative group of its own if it does not accept the corporation.

Another point to recommend the AEC's acceptance of the corporation is the success of a similar association of universities, now administering the Brookhaven Laboratory on Long Island.

**DEAN BRYCE** Crawford of the graduate school explained last week that as an administrative body, the corporation would man-

age and operate the atom smasher project, wherever it is located. This includes "over-seeing the project, hiring staff, bringing in know-how, changing programs and adding new programs."

Some University professors might remain on the University staff and work on the accelerator project at the same time, if Rosemount is chosen as the site, he added. This would be facilitated because of the close geographical proximity, not because the University is a member of the corporation, he added.

Each member university is expected to guarantee a certain amount of money for use in the corporation if needed. A recent issue of Science magazine cited \$100,000 per member as an approximate amount. This is "money on call, a guarantee fund for operating expenses of the corporation," Shepherd said.

## Pub Board vetoes 3-volume yearbook

A one-volume Gopher will be published again next year, despite the editor's hopes to put out three volumes.

It was unanimously decided at the Board of Publications meeting Wednesday that it would not be economically possible to publish three volumes.

Editor Gary Lindberg, adult special, had hoped to publish paperback quarterlies which would be sold with separate hard covers.

**THE BOARD ACCEPTED** the bid for one volume from the American Publishing Co. (Josten's of Owatonna) for the 1966 Gopher. Photography will again be done by Dayton's.

Gopher Business Manager, Dwight Wirz, CLA junior, reported that about 700 Gophers still have not been picked up.

**DAILY EDITOR** Dan Wascoe, CLA senior, and Business Manager James Fenning, business senior, reported on progress of the newspaper. Fenning said the Daily made \$3,000 spring quarter.

Staff changes will be made in the 1965-66 Ivory Tower, according to Editor Garrison Keillor. He has named Patricia Hampl, CLA sophomore, managing editor. She will have two assistant editors.

## Informal summer rush acquaints students with facts of Greek life

"The only way to clear up the myths about the Greek system is to go through rush and see for yourself," advises the assistant rush chairman.

Informal summer rush is not run by the Interfraternity Council (IFC), according to Gary Sutton, CLA junior and IFC rush chairman. IFC does supply lists of incoming students to individual houses, however.

**BARBECUES**, baseball games, water-skiing and stags are a few summer rush events, Sutton said.

"Our house has a Career Day at which we help incoming freshmen with any problems they may have about the University or their majors," said Mike Fisher, CLA junior and IFC assistant rush chairman.

**SUMMER RUSH** helps new students become aware of the Greek system, Sutton explained. A

student who has participated in summer rush often has better luck during fall formal rush.

IFC allows some of the smaller fraternities on campus to pledge men during the summer. This involves about one-third to one-half of the houses, Sutton said.

**RUSH PARTIES** are being sponsored by IFC in Duluth and Rochester this summer, Sutton said. Individual fraternities plan to rush outside the Twin Cities as well.

Any man who leaves his name in the IFC office, 203 Union, will be contacted by individual houses to attend rush events.

Summer sorority rush parties are all sponsored by the Panhellenic Council, explained Viki Ruud, education junior and Panhellenic rush chairman.

"**CONTACT PARTIES**" are for any women graduates of Twin City high schools, Miss Ruud said. They are for coeds attending any college. At least three sororities must have representatives at the parties.

In addition to collegiate sorority members, alumnae members attend the parties to talk to mothers. "A major influence on girls to go through rush is persuasion by their mothers," Miss Ruud explained.

Contact parties will also be held in Rochester, Austin, Albert Lea, Duluth and Winona this summer, she said.

### Muslim Assn. sponsors talk

The Muslim Students' Assn. will celebrate Eid-e-Milad-un-Nabi, the birthday of the Prophet Muhammad, at 7:30 p.m. today in the Union men's lounge.

### Sunday, July 11 RICE STREET ROMP

A get together to go go-carting and play miniature golf.

Meet at the LUTHERAN STUDENT ASS'N 1853 University Avenue S.E. across from Cooke Hall at 5:30 P.M.

Rides will be provided. For more information Call FE. 1-1859

## Blind . . .

(Continued from Page 1)

learning the techniques of finding something that was dropped or placed on a table, learning to select clothes and grooming practices, learning to handle money so that denominations can be determined and learning protection techniques.

"**WE TRY TO** give the blind rules and principles to follow to relieve anxieties and give confidence," he said. If you try something and fail

you don't try it again. Eventually this means the blind person loses his mobility.

"If you come home and it's dark and you want to go in to the bathroom you might raise your hands in front of your face to protect it. We teach this technique of using arms to protect the body and face to the blind and variations of it for approaching chairs and tables which are below waist height. We use efficient ways—not the age-old technique of moving at a snail's pace and shuffling the feet."

### UNIVERSITY JAPANESE ASSN. and BUDDHIST STUDENT ASSN.

Present

## TWO NEW JAPANESE FILMS

In Wide Screen and Color

# 'THE LAKE'

A story of an ingenious girl acted by a very famous Japanese-German girl violinist, Haruko WANIBUCHI. Another presentation of a foreign student's coming home story. An outstanding film with breath-taking sublime beauty.

Also

# 'The Phantom Huntress'

A popular phantasmagoric samurai film

**BOTH FILMS ARE IN MPLS!**

**Starts 7:30 P.M. Sharp**

**Fri., Sat. and Sun., July 9, 10 and 11**

**MUSEUM OF NATURAL HISTORY**

### Peace Corps to give tests

Peace Corps placement tests will be given at 9 a.m. July 10, August 14 and September 11 at the Minneapolis and St. Paul post offices.

To take the test, applicants must fill out a Peace Corps questionnaire. These can be obtained at the post office or by writing the Peace Corps, Washington, D.C., 20525.

Your portrait deserves the best

**KALLMAN** STUDIO  
1321 4th St. S.E. FE. 1-2255

# Religious Services

### UNIVERSITY LUTHERAN CHAPEL AND STUDENT CENTER

1101 University Ave. S.E. FE. 1-1102

SUNDAY, JULY 11, 1965

10:00 A.M.—Holy Communion

8:30 P.M.—Wednesday—Seminar—"Theology and American Literature" with George Taylor, Graduate Student at the U —



### UCCF AND WESLEY FOUNDATION

(Campus ministries of the Christian Churches, Evangelical United Brethren, the Methodist Church, the Moravian Church, United Church of Christ, and the United Presbyterian Church.)

SUNDAY, JULY 11, 1965

9:00—Morning Worship, First Methodist Church, 1209 4th Street S.E.

10:30—Morning Worship, Prospect Park Methodist Church, 30 Orlin Avenue S.E.

MONDAY, JULY 12, 1965

7:30 P.M. TWIN CITIES STUDENT SUMMER SERVICE SEMINAR

331 17th Avenue S.E.

Urban Renewal: Its Methods and Goals  
Speakers: Mr. B. Warner Shippee, Director, St. Paul Urban Renewal

### HOLY EMMANUEL LUTHERAN CHURCH

Ontario & Essex S.E. FE. 1-2516

E. M. VELEBIR, Pastor

SUNDAY, JULY 11, 1965

10:15 A.M.—Family Worship—Guest Preacher

God Never Take a Vacation, Why Not Take Him on Yours

EVERY SUNDAY

The Lutheran Hour—KSTP 8:30 A.M.

This Is the Life—Channel 5—10:30 A.M.

### BAPTIST STUDENT FOUNDATION

1219 University Ave. S.E.

J. Kenneth Huyck, Minister — 331-1768

SUNDAY, JULY 11, 1965

9:00 A.M. Student Coffee Hour Class

10:00 A.M. Morning Worship—United Services with Como and First Congregational Churches



### GRACE UNIVERSITY LUTHERAN CHURCH

Harvard and Delaware S.E. 331-2259

Across from Centennial Hall  
1 Block So. of Washington Ave.

Vincent L. Hawkinson, Pastor

10:00 A.M.—Sunday Worship  
Communion 1st Sunday of the Month



### HOLY TRINITY CHURCH

(University Episcopal Center)

AT THE UNIVERSITY OF MINNESOTA

Welcomes You

317 17th Ave. S.E.

331-3664

SUNDAY, JULY 11, 1965

10:00 A.M.—Morning Prayer

### UNIVERSITY LUTHERAN CHURCH OF HOPE

13th Ave. and 6th St. S.E. 331-5988

Pastor David W. Preus

Pastor Harvey M. Berg

Pastor O. A. Hofstad

Sunday Services 8:45, 10:00 & 11:15 A.M.  
Holy Communion the first Sunday of each month during all services.

## U research breeds new soybean variety

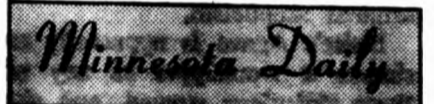
Japan will be buying more Minnesota soybeans if a new variety developed at the University proves as successful on the world market as it has been in preliminary tests.

Named Traverse for the western Minnesota county where it is often grown, the variety is the result of an accelerated research and breeding program conducted on three continents by the University and the U.S. Department of Agriculture Regional Soybean Laboratory.

A principal feature of the new bean is its yellow hilum, or seed spot, which overcomes one of Japan's objections to other Minnesota varieties with black hila.

The Japanese are among the major world buyers of American soybeans, but they prefer varieties with solid yellow seeds for their major food products. Thus, their food industry makes only limited use of the Chippewa soybeans raised on two-thirds of Minnesota soybean acreage last year.

Miso and Tofu are two popular Japanese foods containing soybeans. Miso is a fermentation product of cheese consistency used as seasoning in soups and other dishes; Tofu is a high protein staple used to supplement the highly carbohydrate rice diet. It is very similar to cottage cheese.



The student newspaper of the University of Minnesota, Minneapolis/St. Paul. Published daily, except Saturdays, holidays and days following holidays, during the academic year and semi-weekly during summer session, by the Board in Control of Student Publications, Lyle Frost, President; Steve Anderson, Vice-President; Ava Stern, Secretary; Karen Erickson, Treasurer. Main offices: 10 Murphy Hall, University of Minnesota, Minneapolis 14, Minnesota. Editorial phone 373-3381. Business phone 373-3385. St. Paul Bureau: 254 North Hall, University of Minnesota, St. Paul 1, Minnesota. Phone 647-3425. Represented for National Advertising by National Advertising Service, 15 East 59th Street, New York. Printed at Commercial Press, 418 Third Street South FE. 6-6644. Subscription price \$6.00 a year, \$2.00 a quarter. Single copies 5 cents each. Second class postage paid at Minneapolis.

**EDITOR** Dan Wasace  
**BUS. MANAGER** James Fenning  
Adv. Manager James Hannigan  
Associate Editor Blair Charnley  
City Editor Joyce Schubert  
News Editor Patricia Hampf  
Copy Editor Katie Schmid  
Photo Editor Mike Zerby

**NIGHT STAFF**  
Night Editor Blair Charnley  
Asst. Night Editor Jane Hastings

Because the hilum is soluble it gives Tofu a grayish cast, according to Richard L. Cooper, research associate in Agronomy and Plant Genetics. The Japanese like Tofu made with black hila beans about as much as we would like "black specks in our cottage cheese," he said.

Breeding of Traverse soybeans began several years ago with selections from a cross between Lincoln and Ottawa Mandarin varieties.

To speed things up, plant breeders often seek nurseries in places where a second crop may be grown during the winter.

Soybeans cannot be raised in the Southwest or Mexico, however. But Jean Lambert, professor of agronomy and plant genetics, and Cooper found that soybeans did well in Chile and sent seven bushels of Traverse seed there in the fall of 1963. This extra crop brought the variety to market one year earlier than planned.

Traverse was not generally available for the 1965 crop year, but will be available next year.

Soybeans, a minor crop in Minnesota before World War II, have overtaken corn as Minnesota's major cash crop. In 1963, farm receipts from soybean marketings in the state were over \$126 million, 8.6 per cent of the total cash receipts from farm marketings.

Japan is the biggest foreign customer of American soybeans, buying 48 million bushels in 1963 and 45 million in 1964. Recent studies indicate Japan's import requirements for oilseeds will increase by about 140 per cent in the next decade.

### SKIN DIVING LESSONS

INSTRUCTING SINCE 1951

**\$12.50**

WE FURNISH GEAR

"FREE"

CATALOGUE ON REQUEST  
**JACK THE FROGMAN CO.**  
4251 Nicollet Ave., Mpls., Minn.  
TA. 3-7140  
WE SELL QUALITY MERCHANDISE

## Shortened psychology course challenges student endurance

Summer session courses are known for their compactness; but squeezing a regular 10 weeks' work into five weeks seems child's play compared to the problem psychology students face.

The 5-week psychology course encompasses material that is spread over two quarters during the regular school year. Assignments for the 6-credit course include a 700-page textbook and 38 short experimental articles, according to James L. Mack, psychology instructor. This is the same amount of work required during the 20-week course, he said.

"I TOLD THEM the first day it would be hard," Mack said, but the class, which numbers 300, was

apparently not discouraged.

"He's a good lecturer," Diane Iverson, CLA sophomore, said. "The second half will be more interesting than the first, I think," she added.

Students spend 10 hours a week in lectures and about two hours a day on homework, Mack estimated.

"THERE ARE OBVIOUSLY arguments for and against" having the course in the 5-week period, he said. Seniors who have not finished their science requirement for graduation and have a job waiting for them and teachers who must fit the course in during their summer vacation especially benefit from it, Mack said.

### Couple to play in piano concert

The four hands of Markowski and Cedrone will play one grand piano at 8 p.m. Tuesday, July 13, in Northrop auditorium.

The Markowski-Cedrone team in private life is Mr. and Mrs. Cedrone, who met as students at Boston Conservatory of Music. Each selection will be introduced with a brief descriptive commentary.

The program will include compositions by Bizet, Schubert, Brahms and Stravinsky. The concert, sponsored by the Department of Concerts and Lectures, is free.

### NOTICE TO ALL 'U' GOLFERS

Summer Session Students Receive 25% Discount At

**HARKIN'S GOLF TEES**

Snelling Ave. & Hwy. 10

**\$1 PAIL FOR 75c**

**60c PAIL FOR 45c**

This Offer Not Good on Sundays (Offer Expires July 10)

Bring This Coupon



### FREE SERVICE ON AIRLINE TICKETS

Campus Travel Service conveniently located in Dinkytown to take care of all your travel needs.

- Plane and ship tickets for all lines
- Charge account service for faculty and staff
- Job Interview temporary charge accounts . . . pay when reimbursed
- Low cost all student Europe trips from \$85
- Economical trips for adults of all ages to Europe, Orient, So. America, Around the World.
- Independent trips planned for family groups, individuals, sabbatical leaves

Save time! Save money!

*Americans Abroad Inc.*

Travel Service  
317 14th Ave. S.E.  
FE 1-7909 (next to Perine's)

CMU Presents:

**TONIGHT**

**Russ Peterson**

Smooth Dance Music for All Ages

9-12:30

CMU TERRACE  
(MBR if Rain)  
UBOG

50c Summer Session Fee Statement and Identification

or  
50c Spring Qt. Fee Statement & Identification

## Campus Pizza

331-7964

818 Washington Ave. S.E.

**DELIVERY and CARRY-OUT**

They're really loaded!

**DELIVERY AND CARRYOUT**

**MENU**

	Small 12"	Medium 14"	Large 16"
CHEESE	\$1.00	\$1.50	\$1.95
SAUSAGE	1.25	2.00	2.95
PEPPERONI	1.25	2.00	2.95
ANCHOVIES	1.50	2.25	2.95
GREEN PEPPERS	1.50	2.25	2.95
ONIONS	1.25	1.50	2.95
MUSHROOMS	1.50	2.25	3.05
TUNA	1.50	2.25	2.95
OLIVES	1.50	2.25	2.95
SHRIMP	1.50	2.25	2.95
SAUSAGE & MUSHROOM	1.80	2.50	3.45
SAUSAGE & PEPPERONI	1.90	2.85	3.65
SAUSAGE & ONION	1.50	2.25	3.25
SAUSAGE & GREEN PEPPER	1.50	2.50	3.35
SAUSAGE, PEPPERONI & ONION	1.50	2.50	3.35
CAMPUS DELUXE	2.00	3.00	3.95

All Pies Have Cheese

OPEN FROM 4:00 P.M. 7 DAYS



### AUTO INSURANCE

FOR MATURE, SINGLE DRIVERS UNDER 25  
MATURITY + PSYCHOLOGICAL TEST = REDUCED RATES

Sample Rates:	AGE	RATES
(ALL NATIONS)	21-24	125.00
	20	145.00
	18-19	169.00

Call to see if you qualify (10/20/5 Liability)

**STEINKE AGENCY**

2325 Hennepin Ave.

FR. 7-1234

AUTO — LIFE — FIRE

### That's a Sprocket, Mabel!

And with that word of enlightenment, she roared away past Gray's bound proudly for sorority row on her new lightweight from the Bike Shop. This "How to ride and care for your new bike" educational service goes with every sale—and thanks to the ease of bike-riding, it takes little or no time at all. But we provide it just the same, especially for first-timers whose childhood memories are a bit hazy. If you're anticipating the thrill and convenience of owning a bike, stop in today and see Easy Ed, the man who believes that complete service, parts, accessories and insurance are vitally correlated with happy customers. You'll be glad—now and later—that you did.

**THE BIKE SHOP**

219 Oak St.

Hours 8 - 6

Phone 333-7334

Views expressed on this page in the Daily's unsigned editorials represent those of the paper. Signed columns, reviews and letters to the editor represent the personal views of the writers. In neither case is the opinion necessarily that of the University administrators, faculty, staff or other students, and titles and positions are listed for identification only.

## Smut War II

Here we go again: the same story repeats and repeats and repeats . . .

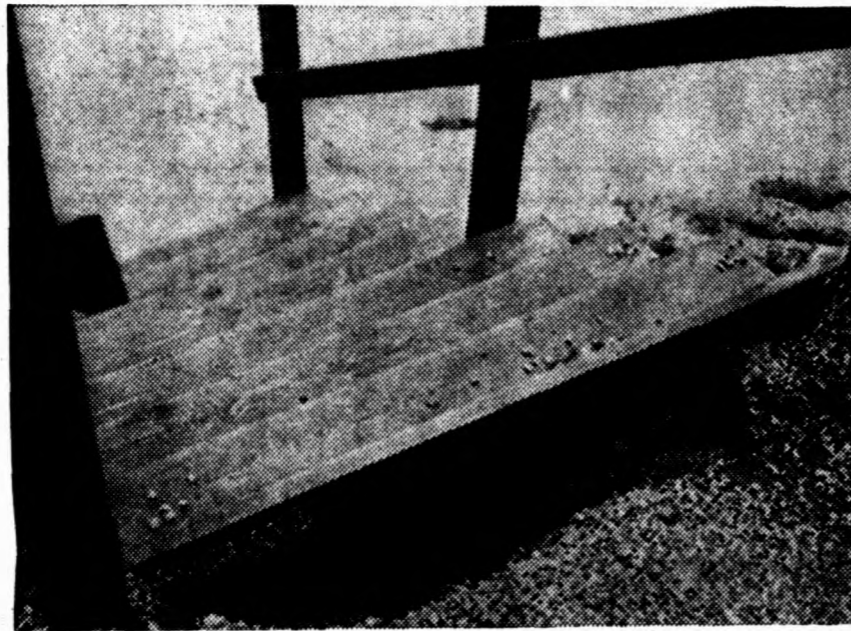
St. Paul Mayor George Vavoulis found some more "smut," this time in Minneapolis-St. Paul International Airport's bookstore. Of course, he took up the cudgels to protect the innocent from the terrifying effects of smut (another Henry Miller novel, "Sexus").

The Metropolitan Airport Commission (MAC) went along with him, over the protests of Minneapolis Mayor Arthur Naftalin, and directed the bookstore to remove "obscene, salacious and pornographic" literature from the racks.

Naftalin noted MAC was asking its staff to decide which books are pornographic while MAC itself couldn't agree. He also pointed out that courts have ruled a book should be judged as a whole, not on the basis of isolated passages.

MAC didn't even define the terms it used. If the books are pornographic, the police could take action.

But the books are not legally pornographic. Consequently, the police can't take action, and neither should MAC.



### Fix it!

The pedestrians on a construction-ridden campus have a problem.

Summer rains have eroded the land by these steps south of the Chemistry Bldg. to a point where a gaping gully confronts the unwary walker.

The University can scarcely afford injury suits, but it can afford to fix the hole. Soon.

## Nuclear treaty efforts should precede multilateral force drive

By Peter Sederberg

In the past few months it has become evident that the Kennedy brothers are attempting to create their own alternative to President Johnson's politics. The object of their appeal is the liberals who are beginning to feel a bit uncomfortable in the embrace of the Johnson consensus.

Edward Kennedy, of course, led those senators who wished to strengthen the voting rights bill by including state and local elections. More recently, Robert Kennedy, in a major Senate address, implied that the Administration was doing little to stop the proliferation of nuclear weapons.

Robert Kennedy's speech has been corroborated by a recent article in the New York Times, which reported that a recommendation to give a treaty to halt the spread of nuclear weapons priority over the Atlantic nuclear force has been temporarily shelved.

The recommendation, made last

January by a special Presidential panel, is opposed by the State Department for two major reasons: First, it is contended that the multilateral force is necessary to revitalize the Atlantic community. Second, the Department argues that such a force would actually aid in halting the spread of atomic weapons.

The Russians, however, do not see it this way. They refuse to consider any "anti-dissemination" treaty while the United States advocates a policy that would give the Germans control, no matter how partial, over a nuclear arsenal.

Regardless of the State Department's view, there are several considerations which favor the panel's recommendation. It is fairly obvious that the multilateral force is a dead proposal as long as France opposes it. She is not likely to change her position against it as long as the United States has the deciding voice in its operation.



"I get a moderate income from the 'hip' magazines. I write suggestive captions for Jackson Pollock paintings."

## 'Bacchae '65' essentially silly; loses original impact, meaning

By Jonathan Sisson

This weekend Dionysus raises havoc in his temporary temple of Scott Hall. The play is "The Bacchae '65," written and directed by Charles Nolte.

It is a modernization of a harrowing play by Euripides, but it bears no more similarity to Euripides' "Bacchae" than the 1603 Quarto bears to Shakespeare's full "Hamlet." This faint Euripidean echo begins as satire and transcends itself into slow-motion confusion.

"The Bacchae '65" is not original enough to stand on its own, and it is not faithful enough to Euripides' version to share its impact.

The essential silliness of Mr. Nolte's play is unrelieved. It begins at a revival meeting with some testimonials about the faith-healing of the good Blessed Daddy, who appears on TV and is coming to-night!

One of Blessed Daddy's Minute

Maids, Lotus Blossom, played by Lois Swanson, delivers a perfervid statement about how she was diabetic until she met Blessed Daddy but now she can even eat pancakes with maple syrup. She's all right. The others at the meeting speak in distasteful Hallelujah-Lawd tones.

Blessed Daddy (who is Dionysus, if you hadn't guessed) shows up to palm-leaf accompaniment and wearing sun glasses. He heals "Crippled Lady," played by Jayne Chamberlin, who walks around in joy until the cops break up the meeting, when she collapses.

About this time you figure that long ago in the Orient Blessed Daddy learned the secret power to cloud men's minds. For the rest of the play nothing is done automatically to change this impression or to convince you of BD's divinity. He remains just a cockeyed hypnotist.

This is not the case in Euripides' play. There Dionysus really is the son of Zeus. He is followed by a chorus of oriental devotees and is carrying out a personal vendetta against his mother's skeptical family, which reigns in Thebes.

In Mr. Nolte's play Dionysus appears simply to be traveling around the world driving people nuts. Can you be expected to believe a guy on television wearing shades and calling himself Blessed Daddy? Sooner Richard Burton in one of his religico roles.

Euripides' Dionysus is after specific scoffers. He is not trying to make mincemeat out of skeptics and believers alike. The faithful oriental chorus does not suffer.

Euripides' Agave suffers, al-

though a Dionysiac, because Dionysus has magically made her into a devotee in order to punish her original skepticism.

Nolte's Agave is apparently as sincere a worshipper as any of those ridiculous women, and she suffers because . . . she suffers. This may be sound nihilist doctrine but it is not drama.

Lacking rhyme, reason, or method in its madness, "The Bacchae '65" doesn't go anywhere. Only the external events have been taken

(Continued on Page 5)

## campus forum

### Another Disaster

To the Editor:

Minnesota has surely been an unfortunate victim of ghastly natural calamities of floods and tornadoes. Our sympathies lie with the victims and the whole state salutes the government and non-governmental agencies in providing relief to the victims.

But there is another disaster impending for the 20,000 families—all salaried, fixed income employees of the state government (including 6,000 from the University of Minnesota alone) whose life savings are in serious jeopardy in the insolvent State Capitol Credit Union, threatened with liquidation or reorganization with loss of at least 25 per cent of the share accounts of its members. This im-

(Continued on Page 5)

## recent comments

"Therefore we turn to those who run the risk of pushing events to extremely dangerous limits. We turn to those who in the present moment have the responsibility of the salvation and welfare of the peoples of the world.

"May they re-establish relations between nations in reciprocal respect and reciprocal trust in the moral principles which are natural, and which are therefore in themselves Christian. May they reinforce international institutions capable of preventing armed intervention. May they use these institutions, according to circumstances of general respect, to assure loyal agreement on and the loyal observance of pacts."

Pope Paul VI  
Feb. 11, 1965

## Nuclear . . .

(Continued from Page 4)  
the further spread of nuclear weapons. Consequently, it would seem that Kennedy's desire to have greater effort expended in this area is meritorious. There exist, unfortunately, certain obstacles to the creation of a meaningful agreement.

First, it is possible that an independent European nuclear force will be created. Russia would probably react rather unkindly to such a situation.

Second, Germany or no, it is not in Europe where nuclear proliferation constitutes a threat. Far more volatile would be the possession of the bomb by the newer and more aggressively nationalistic countries like Indonesia and Egypt.

Finally, any agreement must include China. Yet, largely due to past American policy, the United States and China are almost pathologically opposed. These blocks must be overcome if a viable treaty is to be constructed.

(Peter Sederberg is a former president of YDFL and a CLA senior.)

## campus forum

(Continued from Page 4)  
pending tragedy for many families is as serious as the tornadoes and flood disasters. Many have no other assets except the money with the Credit Union, kept for use in old age and education for their children. Many victims are the foreign nationals (students and staff members at the University), who would have this bitter taste of our affluent and great society. There is no insurance against this loss either.

Who has to be blamed for this mishap? Certainly not tricky nature! Nor the depositors since they always thought that the Credit Union had the State Government's backing and support. The University employees were always exhorted to become members of this great organization. The Commissioner of Banking did not make the

## ISC president wants joint office, int'l lounge

If Kee Yon Tau, president of the International Student Council (ISC) has his way, the new ISC office in 349 Union will be a combination business office and international lounge.

The Union Board of Governors has to approve all financial arrangements before plans can be completed.

"We hope to make the office a center where Americans and foreign students can meet on common ground and come to know each other better," Kee, a graduate student from Malaysia, said.

HE PLANS TO do this by partitioning a small part of the office for business purposes and making a lounge out of the rest of it. Kee said he would like to have light pastel cushions on the floor, stools and easily moveable chairs in the lounge.

(Continued on Page 7)

## University Theatre . . .

(Continued from Page 4)  
from Euripides' version, not the informing skeleton of divine jealousy and pride.

Instead of a terrible god, Nolte's is merely batty. The Nazi Specter, for example, does not raise its head in this concoction.

The play might work on the radio. Very little happens on stage. The characters stand stock-still most of the time. When they move, they run like hell.

One sore spot is the implausible handling of the policemen. When cops disapprove of a meeting, they disperse it. These cops try to argue with Blessed Daddy and his followers. In order to calm everybody down, they run around like their Keystone brethren.

Lines like "Where is your god; I don't see him" won't do. That line belongs in the DeMille spectacles where the pagans still don't know about invisible gods.

Nobody turns in an especially notable job of acting. I got a kick out of Oliver Osterberg as Cadmus, and Allen Lorensen as a psychiatrist.

Most of the funny parts aren't very funny and there are few other parts. Any warning against the danger of cults is enervated because the cult in question is so silly from beginning to end.

Were the Beatles really that dangerous?

(Jonathan Sisson is a graduate student in English.)

members aware of the deteriorating condition of the Union before blowing the whistle on March 29. The March 15 news letter from the Union states that it is a "growing and dynamic organization."

The Minnesota Governor and our Senators owe to these 20,000 families some support and sympathy. Our Vice-President should do something for these victims in his beloved state. The National Credit Union should at least come to the rescue of their largest member.

J. S. Uppal  
Director in Economics

## TERRACE COOK-OUT

Tuesday — July 13

5:30 - 7:00 P.M.

Coffman Terrace

HAMBURGER PLATE—75c

STEAK PLATE—\$1.25

UBOG

### AUTO INSURANCE

- NEW LOW RATES
- OVER 25
- UNDER 25

"Be Sure—Insure"

with the

Arthur Gleason Agy.

224 W. 66th St. Tel. 866-8731  
Free rate quotation. No obligation.

## BARRETT POHL

ANNOUNCES A NEW IMPORT PRICE POLICY

BARRETT POHL (formerly of Dinkytown) is now located in a large, old residence at 2722 Park Ave. with a greatly expanded selection of the finest Scandinavian furniture, fabrics, lighting, area rugs and accessories. The new prices are one-third off regular, published, list prices, and are inclusive.

BARRETT POHL continues to bring you only the finest quality in modern design and craftsmanship. The new price policy has been established to broaden the selection, enlarge the volume, and make good design available to more people.

BARRETT POHL DESIGN CENTER

2722 PARK AVENUE / MINNEAPOLIS / MINNESOTA / 822-3837

## New Dental Chairman

Dr. Richard E. Stallard is the new chairman of the division of periodontics in the University School of Dentistry.

Dr. Stallard returned to the University June 1. He served two-and-a-half years as co-director of

periodontal research at Eastman Dental Dispensary, Rochester, N.Y.

Dr. Stallard has earned bachelor of science, doctor of dental surgery, master of science and doctor of philosophy degrees from the University.

# Sale

STARTS TODAY!

## SUITS

Reg. 75.00 . . . . . 64<sup>95</sup>

Reg. 65.00 & 69.95 54<sup>95</sup>

Reg. 59.95 . . . . . 49<sup>95</sup>

Reg. 45.00 & 49.95 39<sup>95</sup>

## SPORT COATS

Sale Priced

19<sup>95</sup> - 24<sup>95</sup> - 29<sup>95</sup>

## SLAX

CORBIN  
Reg. 22.95 . . . . . 18<sup>95</sup>

Reg. 18.95 . . . . . 14<sup>95</sup>

Reg. 14.95 . . . . . 11<sup>88</sup>

### SPORT SHIRT

SALE

3<sup>99</sup> & 4<sup>99</sup>

### DRESS SHIRTS

Reg. 5.00

SALE 3<sup>99</sup>

## Huntley's Ltd.

(FORMERLY THE COLLEGE SHOP)

616 WASHINGTON AVE. S.E.

Open Mon. Eve. 'til 9 p.m.

Shoppers Charge

# Showboat drama flops, but afterpiece sparkles

(Editor's Note: Another review of "Because I Love You" with a different point of view will be printed next week.)

By Jonathan Sisson

If you are an organ grinder, you need a charming smile.

That is, when you do something mindless, you must do it with finesse. The Showboat Theater production of John A. Fraser's "Because I Love You," a quite mindless melodrama, fails in this sole requirement.

It is purely mindless from that embarrassing opening song, "Here Comes the Showboat," to the final "Curses."

That a play is a lot of coincidental, mechanical nonsense is no excuse for laziness, and this cast does not try as hard as it could.

## potpourri

"Oh Hubert, Poor Hubert, Lyndon's Hung You in the Closet and I'm Feeling So Sad" is opening tonight at 9 at the Brave New Workshop, Cafe Espresso, 207 E. Hennepin Ave.

The program is a number of short political and social sketches satirizing such things as The Les Crane Night Life Show, airline stewardesses, Bertrand Russell, beauty contest winners, private eye programs, tv commercials and next year's television schedule.

Several University students are taking part in the program. Cover charge is \$1. Performance times are at 9 p.m. Friday and Sunday and at 8:30 and 11 p.m. Saturday, although refreshments (and really good ones) are served all evening.

"Ready When You Are C.B." was first produced in New York under Joshua Logan with Julie Harris. The Old Log Theater is

(Continued on Page 7)

The simplicity of caricature demands imaginative handling.

The only distinguished performance is by James Wallace, who plays a Blue Ridge version of Art Carney's Norton. Jan Pearce executes the interesting and neat trick of shifting between a youthful e. e. cummings and Charlton Heston.

This sour reviewer does not find the frippery of nineteenth-century melodrama really worth the effort, as it is a bore unless done very well. And if done very well, there still isn't much there.

We are advised that the Showboat has spared no pains to recreate the authenticity (pace Heidegger) of this form of entertainment. But as with Dr. Johnson's dancing dog or whatever it was, one marvels not at the ingenuity or success but that anyone should bother with it at all.

The cast does not seem interested in "Because I Love You." At any rate, it does not get its teeth into the play.

Why not drop the nineteenth-century coyness awhile and try, say—still within the realm of the corny—a few Jacobean revenge plays or heroic Restoration plays? No need for the Showboat decor to be a prohibitive, period-confining factor.

Enough griping.

One is gratefully jarred from ostentation by the hilarious afterpiece, "A Right Awful Travesty of King Richard Ye IIIrd; or, Tragedie Transmogrified." This, well worth waiting for, is almost entirely the work of one Kolley Sibber Klimowski, who adapted and directed it and who plays Richard to boot.

This burlesque does more than jumble Shakespeare's rhetoric after the manner of the "Beyond the Fringe" skit or Mark Twain's Duke and Dapuhin.

More particularly, it satirizes the Guthrie Theater's clumsy "Richard III": the unmanageable costumes, including Richard's outlandish green mantle; Robert Pastene's and Ellen Geer's pointless posturings

as Buckingham and Lady Anne; the incompetent, slow-motion swordplay. (The Showboat company acquires itself in the main play by some skillful fencing.)

As for Richard's character, the Showboat's frenzy of spirited horseplay splendidly reveals the Guthrie production for the traves-

ty it was already, before ever Mr. Klimowski got his transmogrifying hands on it.

(Jonathan Sisson is a graduate student in English.)

DANCING this WEEKEND with the  
**NOBLES**  
(No Cover or Minimum)  
Featuring  
**BEER, PIZZA**  
**The Peacock**  
631 Stinson Blvd. 331-9706

Still here!  
**JOHN'S PLACE**  
Minneapolis' Oldest Chinese Restaurant  
Finest Cantonese and American Food in Authentic Chinese Setting  
Open Daily 11:30 a.m.—12:30 a.m.  
Sun. 4—11 p.m. Closed Tues.  
Take-out orders—anything on the menu  
**JOHN'S PLACE**  
28 So. 5th St. • Minneapolis  
336-4924 or 332-9419

## DINKYTOWN'S OWN BLUES!

**BILL GLEASON** VOCAL GUITAR PIANO  
**JOHN GRAVLIN** HARMONICA VOCAL

FRI. - SAT. 9:30 - 1 A.M.

"SHIRT" THOMPSON

Incomparable Classic Jazz Piano  
Sunday 9:30 - 1 A.M.

**THE SCHOLAR COFFEE HOUSE**

418 14th Ave. S.E.

## AVALON THEATRE

CONTINUOUS SHOWING FROM 2 P.M. DAILY  
ADULTS ONLY

NOW FEATURING  
**FRENCH WITHOUT DRESSING**

plus  
**TONIGHT FOR SURE**

SATURDAY NIGHT  
DANCE TO  
**THE CORVETS**  
with  
**RANDY COOK of KDWB**  
to Emcee and Give Away  
Records at the  
**R.O.T.C. ARMORY GYM**  
(Corner of 17th & University)  
First 20 People Admitted FREE  
Everyone Invited No Dress Regulations  
SPONSORED BY CENTENNIAL HALL & UNIVERSITY POLICE  
75c 8-12

## THEATRE IN THE Round Players, Inc.

1308 Stevens Ave., Mpls.  
PRESENTS TWO COMEDIES:

C. Fry's  
**Phoenix Too Frequent**

Aristophanes'  
**Lysistrata**

FRIDAY & SATURDAY  
July 9 and 10  
8:30 p.m. 336-9123  
Students \$1.25

## THERE'S A MEETING HERE TONITE

FOR — All who wish to relax and forget the trials and tribulations of the day.

SUBJECT — Your choice of topic. Large selection of experts that can solve any problem.

REFRESHMENTS — mixed to your taste.

plus

The tastiest of FOOD

served from 8 a.m. to 9 p.m.

featuring the RIB EYE \$1.35

STEAK Dinner

the MIXER'S



<p>FE 1-5400 <b>CAMPUS</b> OAK &amp; WASH SE PARK FREE! The Worlds of Maturity and Innocence Meet in <b>"CRAZY DESIRE"</b> CATHRINE SPAAK at 7:10 &amp; 9:40</p>	<p>FE 1-2492 <b>VARSITY</b> 13th &amp; 4th SE JAMES BOND IS BACK TO BACK! SEAN CONNERY in <b>"DR. NO"</b> at 6 &amp; 10 p.m. <b>"FROM RUSSIA WITH LOVE"</b> at 6 &amp; 12 p.m.</p>
--	--

DELIGHTFULLY AIR-CONDITIONED  
**Dance To-nite**  
Tonight: WALLY PIKAL  
Saturday: LITTLE FISHERMEN  
1 Free with Every Paid Adm. Fri. & Sun.  
For FREE Reservations: CALL 786-4630  
**Bel-Rae BALLROOM**  
ONE MILE WEST OF NEW BRIGHTON ARSENAL ON HIGHWAY 10

AUTHENTIC GERMAN ATMOSPHERE  
Bratwurst and Sauerkraut Dinner  
with Songs of Germany on Stereo  
Featuring **Dunkelbrau**  
**Black Forest Inn**  
NICOLLET & 26TH

**CEDAR** 5th & Cedar Av.  
West Bank—Across River from "U"  
AN ADULT GAME OF HIDE AND SEEK!  
Wild! Wacky!  
**"Cherry's House"**  
In Color  
Plus  
**"PAGAN HELLCAT"**  
Cast of Hundreds... All Girls

the newly redecorated  
**Manning's Cafe**  
2200 Como Ave. S.E.  
If you are 21 or over visit



ENJOY A PROPERLY DISPENSED SCHOONER

Delicious BARBECUED RIBS, FRIED CHICKEN, STEAKS, DINNERS & HAMBURGERS

Ample Parking in Rear

# ISC . . .

(Continued from Page 5)

"We hope to hold at-homes open houses for various countries in the lounge," he explained. "For example, one month we could have at home in Japan. Students could bring paintings, china and furniture from Japan into the lounge. A few Japanese students could stay in the lounge to explain the exhibit and Japanese culture to visitors. Perhaps outside lecturers could be brought in to explain paintings and more complicated art objects."

KEE SAID at-homes could also emphasize Africa, Iran, India or any countries represented at the University.

"We hope American students will respond to this arrangement," he said. "Perhaps we could encourage them by having at-homes from New Orleans, New York or some of the states."

Having open houses in the ISC office would be better than having them in the international lounge because the office can be locked at night, Kee said. He pointed out that furniture and paintings could then be displayed without fear of theft or mutilation.

## potpourri

(Continued from Page 6)

now doing it with Beth Brickell, who has recently been under contract to Universal.

The play concerns a poor little actress in New York who is scared to death of auditions. To support herself, she rents out her apartment to tv actors from the West Coast.

Things become rather warm when she consents to share her apartment with a Marlon Brando-type actor who is fleeing from the movie world.

The play is typical Old Log fare, very light, very funny and a cheering experience.

Performance times are at 8:30 p.m. Wednesday through Sunday. Tickets are \$2.50 except on Saturday when some prices go up to \$3. If you are a student, you can get

together with nine others and get in for \$1.50.

For those over 21, the Jazz Tones, a combo group, will be playing at Big A's Bar, 1229 S. 5th St.

One of the best theaters in the state, Theatre L'Homme Dieu, St. Cloud State College's summer theatre near Alexandria, is now producing "The Garbage Hustler" at 8:30 p.m. tonight and tomorrow.

Composition with Red, Yellow and Blue, painting by Piet Mondrian, runs through July 31 on the Main Floor at the Minneapolis Institute of Arts. Late 18th Century Engravings also runs through July 31 at the Bottega Gallery.

Vickie Smith

## AUTO INSURANCE

New low rates for all drivers. Call for rate quotation.

FLOYD A. JOHNSON  
560-5826

## RADIO - TV - HI-FI

Need Repairing?  
We CARRY and SERVICE Radios HI-FI, TV and Traffic Appliances  
COLOR TV  
419 14th Ave. S.E. FE. 8-2777

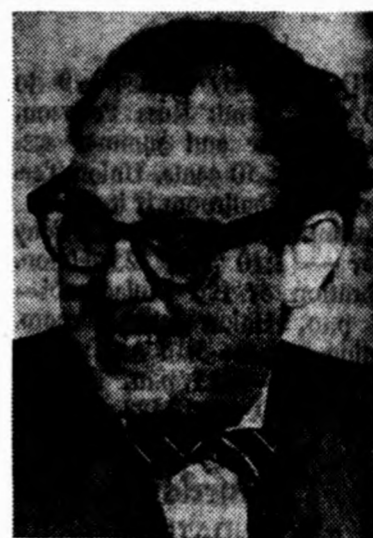
S. F. P. A. E. O. F. A. P. W. C. \*presents

## MAURY BERNSTEIN

"One of the best of the best folk-singers I have encountered."  
—DON MORRISON, Mpls. Star

HELD OVER

TONIGHT AND SATURDAY  
9 P.M. TO 1 A.M.



\*Society for the Preservation and Encouragement of Fat Accordion Players with Cigars

MONDAY THRU THURSDAY 9 p.m. to 1 a.m.

## DAVE "SNAKER" RAY

Exciting Traditional Blues, Rags and Hollers  
in the gaudy, ear-shattering comfort of

## THE TRIANGLE BAR

1822 Riverside Avenue on the West Bank  
AIR CONDITIONED NEW, IMPROVED SPEAKER SYSTEM

### FOR RENT

SUMMER SESSION STUDENTS ATT'N West Bank Manor Apartments, 418-423 Cedar Ave. Newly furn. and carpeted, sleeping rooms at \$40 and up. Apartments at \$75 and up. Many conven. WA. 7-9567. SS

FURN. HOUSE. Near U. of M. Hospital. FE. 1-2488. UC

APTS. FOR RENT 2 blocks from West Campus. Reasonable. 838-9257. SS

1 B.R. furn.-unfurn. apts. in new Van Cleve Court. S.E.'s most unusual bldg. Across from park. 986 - 15th Ave. S.E. FE. 8-2361 or WA. 2-7887. SS

5 RM. APT., 13th Ave. & E. Henn. \$100 incl. all util. FE 1-5961. JY9

3 B.R. MOD. Rambler w/rec. rm. in Falcon Hts., Box 125, Minn. Daily. 10A Murphy Hall. JY23

2 ROOM, prt. bath & ent. 1st floor. Adults only. Grad. stu. couple or ladies. \$79.50 util. incl. Avail. Aug. 1. By apt. Near U. FE. 5-5064. UC

### APTS. FURNISHED

UNIV. S.E. Attr. lge. EM. \$95. 1 B.R. \$110. Lease opt. only. 335-3694. UC

317 6TH AVE. S.E. Vacant furn. 2 B.R. upper dplx. suit for 4. Also lge. front 1st floor room for 2 w/ kit. Priv. & tel. 332-4686. UC

2 B.R. FURN. Apt. 1/2 blk. from campus. 331-7529. JY9

1 BLK. WEST Bank. Lge. 2 bdr. furn. apt. Avail. immed. TA. 5-9131. JY13

18TH AVE. S.E. 1092-1 b.r. nr. U. All util. pd. \$65. FE 1-1171. JY20

PROSPECT PARK 2 BR. APT. L.R., D.R., Screened in porch. \$140 per mo. 889-5914. JY13

SUBLET 3 Rm. II SS. & Sept. Days: 373-2532 - 699-0228 evens. JY13

### APTS. UNFURNISHED

1ST FLOOR DPLX. on bus line. 2 B.R., washer/dryer/garage. Graduate stu. pref. large fenced yard. 721-6924 evens. JY15

5TH AVE. S.E. 621. Furn. & Unfurn. 1 & 2 B.R. Newer bldg., all cpts. Air cond., balconies. Fr. \$135. See Caretaker or call FE. 5-0885 or WA. 6-2092. UC

2235 SNELLING AVE. N.—Conv. loc. Brand new bldg. \$100-\$120. 631-0321 or 631-1606. UC

UNFURNISHED APARTMENT. 3 rooms & bath, parking, walking distance. \$72.00. Htd. 1818-4th St. S.E. FE. 1-7584. JY9

NEW BLDG. Large 1 B.R. Apt. Air cond. Prefer lease. \$135. Caretaker 331-3451. TA. 3-9045. JY9

2214 E. 24TH ST. 5 rms. down, stove & ref. optional. \$60. FE 3-6690. UC

8TH AVE. S.E. Nr. U. Sublet for summer partly furn. bdrm., lvg. rm. & kit. Front. Call Mrs. Brenna, days, 735-5188; evens. 429-9195. JY9

1 BR. prt. bath, stove & ref., laundry facil. All util. furn. \$85. 721-1527. JY13

### ROOMS FOR RENT

ANDREW HOUSE, 708 5th St. S.E. Homelike, Co-ed res. for students & young adults. Exc. meals. 331-4232. SS

INTERNATIONAL HOUSE. Room & Board or board only. Friendly atmosphere. 600-9th Ave. S.E. 331-1846. SS

FURN. ROOMING HOUSE. Girls. Modern, close to U. Reas. 339-1297. SS

U. NICE ROOM for gentleman, quiet lovely home. Walking distance. 1089 14th Ave. S.E. JY9

ROOMS FOR MEN. Near University. 831-1706. UC

820 DELAWARE S.E. Sngl. rm., beautiful furn. Pvt. bath. Avail. July 15. \$35 per month. Call 331-1539. JY9

NEAR WEST Bank. Rooms for men. with club facilities. \$35-\$45. 537-2761. JY23

NEAR WEST Bank. Rooms for men. with club facil. \$35-\$45. 537-2761. JY23

### WANTED TO RENT

CANADIAN GRADUATE cpte. 1 child, reg. 2 B.R. house or apt. nr. U. or on bus line for 3 yrs. Sept. 1. Box 55, Minn. Daily, 10A Murphy Hall. Approx. \$100 per mo. JY9

M.D., FAMILY seek 3-4 B.R. home or dplx. Desire good elementary school and convenience to U. of M. Prefer Prospect Park, Roseville, Falcon Heights. Occupy Aug. 1. Box 25, 10A Murphy, Minn. Daily. JY9

M.D., WIFE, & 1 infnat need 2 B.R. home near U. Hosp. Call evens. 644-5605. Also need 1 B.R. semi-furn. apt. JY13

Married Dent. Student 1 BR. Walk to U Hosp. Sept. 1. 331-5823. JY20

### ROOMMATES WANTED

GIRL 20+ to share apt. w/1. 425 14th Ave. S.E. \$37.50. 331-3764. JY13

1 GIRL, 19 to 20, to share upper dplx. w/3 aft. July 1. 331-6985. JY15

GIRL to share w/3 in 2 B.R. house. Near University. 331-4479. JY9

GIRL TO share w/4 in furn. 4 B.R. house. Near U. TA. 3-1311, 331-2342. JY9

2 MALES to share apt. near boys dorms. Call Ron, 825-9663. JY20

GIRL TO SHARE Dinkytown apartment with two. 331-3967. JY13

2 GIRLS to share LARGE apt. w/2 Nr. U. 333-4744 evens. JY15

MAN TO SHARE Lg. House (PR. BR.) With Group Grad Students Near U. Call 331-1917. JY13

### HOMES FOR SALE

5 BEDROOM, 2 yr. old home in Brooklyn Park. Rec. room, all appliances, 2 baths, garage. Leaving town, low down, take over payments. Furn. if desired. 561-1959 - 1917 Laramie Trail. JY9

CHALET STYLE House Nr. U. Studio, L.R., breakfast bar, 2 lge. B.R., 1 1/2 bths. Sunporch & deck. Large garage & yard. Stove, ref., dryer & washer included. Easy terms Call 644-9700. UC

UNUSUAL HOME - 4 Levels built into hillside of wooded lakeside lot. 3 BR. 2 bths, finished walkout basement. \$24,900. 20 Mins. to U. or downtown. Call 484-1862 for appt. JY9

3074 Lydia Court. First offering. Delightful floor plan on this 3 BR. split level walkout. Fplce., dble. attach. gar., in a most desired area. Delores Lach. 788-2511. Kate Woodington. JY15

### HOME AND INCOME

NEAR FARM CAMPUS 2328 Chilcombe. Well built, spec., true dplx. 3 B.R., L.R., D.R., Sun rm., kit., bath each unit. Yard, gar. Conven. both cities, shopping & trans. Low FHA down payment. Rental income permits inexpensive living while building investment. Apt. only. By owner. 699-2608. JY23

### FOR SALE

TV. STEREOs, Tape rec. Rentals. COLOR TV. 419 14th Ave. S.E. FE. 8-2777. SS

SAVE-FACTORY TO YOU UNPAINTED FURNITURE Desks, Chests, Bookcases, Chairs CEDAR LAKE FURN. TA. 4-1033 13 W. 26th St. SS

MICROSCOPES: Sales & Repair. New, used, guaranteed. BOWER & HAACK, 414 14th Ave. S.E. FE. 1-5791. SS

COMPLETE SET HAWTHORNES Works: 22 vol. old Manse Ed. \$29. Jim. FE. 8-9991. JY9

COMPLETE DARKROOM. \$140. 866-3768. JY9

WEDDING DRESS, size 10. 331-9979. Call after 6 p.m. JY13

MACGREGOR GOLF CLUBS. Men's, Very Reas. WA 6-0962. JY13

Academic Cap-Gown-Hood for M.A. U of M Arts College colors for tall man-size 40-40 long. Call 332-2052 evens or noon. JY15

### AUTOS FOR SALE

'57 PLYMOUTH, auto, trans., radio. Good cond. \$125. 781-1321. JY9

'63 BUICK Skylark V-8 convert. Auto. trans. P.S. & P.B. \$1850. 781-1321. JY9

'61 VW Deluxe. Gas heater. Sno tires. Excel. cond. \$895. 338-4488. JY15

'61 T-BIRD, excel. cond. Ivory, red leath. int., new tires, am-fm radio. For sale by orig. owner. 373-3601. 698-8126. JY15

'59 VW SEDAN. New paint & rebuilt engine. FE. 9-7311, ex. 2821 or ST. 1-5608 evens. JY9

'64 VW Convert. Black, radio, WSW. Ex. cond. \$1,595. 888-4823. JY10

'61 FALCON wagon. Ex. cond. 30,000 mi. Best offer. 588-0894. JY13

'55 FORD V-8, automatic. Ex. cond. \$250. 338-8263. JY15

'63 VW. Ex. cond. Must sell. 866-2057. JY20

1961 PONTIAC Catalina conv., WSW, radio. GL. 4-1232. JY20

'69 CHEV. Impala, good cond. o'haul eng., S. T. King. 373-2318, 331-5136. JY13

59 TR3— Needs work. Take over payments. 927-5226. JY15

59 VW Blue, 40,000 mi. 2 Dr. New tires. Needs left rear fender. In Ex. Mech. cond. CHEAP! 776-6354 JY15

2 WK. OLD Yamaha, warranty. Must sell. 645-2446. JY20

62 VESPA. \$175. Must Sell. Call 'Bill 339-1126 aft. 6 p.m. JY15

64 VESPA ALLSTATE 125cc Orig. Owner. Speedomtr. 333-1333 Morn's. JY15

THE quiet scooter—all gear drive. Best scooter made. Sale \$299. \$50 down. CUSHMAN MOTORS, 2909 East Franklin, Mpls. FE. 3-3478. SS

62 VESPA. \$175. Must Sell. Call 'Bill 339-1126 aft. 6 p.m. JY15

64 VESPA ALLSTATE 125cc Orig. Owner. Speedomtr. 333-1333 Morn's. JY15

### WANTED

WANTED: '57-'58 Ford w/good body, had eng. Prefer 6 stick, convt. or wagon. 335-3645. UC

Garage—anywhere, to store car til Sept. 373-2532-699-0228. JY13

### FOR SALE TYPEWRITERS

Why my TYPEWRITERS & SERVICE are inexpensive. No Rent—shop in my home. (3 1/2 blks. North U of M) No Salaries—I do repairs.

100 Typewriters: Royal, Olivetti, Hermes, Smith-Corona, Underwood. Try-buy plan. Take trades. Terms. 1 year guarantee. Expert repairs. Air clean \$4. Chemical \$10. Home typing course \$3.95 with rental or purchase. New or used. KIRK, 417 S.E. 14th Av. FE. 1-7277. FSS

Remington Rand—15" carr.—Elite Type. Ex. cond. 335-7407 evens. JY15

### MISCELLANEOUS

RISK & CYCLE INSURANCE Call 646-3863. Low Rates. SS

Share driving & Exp.—Have own car or yours?—Detroit Lakes, Rnd Trip—Twin Cities. Living D.L. Fri-Sat. Ret. Sun. 332-2052. JY15

### HELP WANTED

DRIVERS 21-55 yrs. of age. Short part time shifts or full time shifts. 1st class equipment, vacation with pay, accident & sickness benefits, hospitalization & life insurance. Apply in person: YELLOW CAB CO., 127 1st Ave. N.E. SS

TEACHERS—Contact us for Fall pos. immed service, enroll free. MINN. TEACHERS SERVICE. 800 Plymouth Bldg., Mpls. FE. 3-1630. SS

WASTE SETTLEMENT HOUSE seeks male paid & volunteer leaders for summer employ. Hrs. can be arranged. FE. 6-8759, Mrs. Lynch. UC

### ATTENTION MEN

5 men part or full time work. Start now. Call 724-3034. SS

FOOD TECHNOLOGIST: B.S., 2-3 years experience in food research and development. Duties include development and improvement of specialty foods. This position offers growth, opportunity in our expanding R&D unit. Salary commensurate with past experience and education. All replies held in strict confidence. Send resume including education, experience, and salary requirement to FOOD PRODUCERS INC., 2401 Edgewood Ave., So. JY13

STUDENT—Female—to do lite hkgp. for 2 adults—rms. board + in home 20 mins. from U. 699-2641. JY9

BABYSITTER, 3-4 days per wk., all day, in my home. 2 children, 1-2 yrs. 774-5756 bet. 1-3 p.m. JY9

HAVE 3 WEEKS Work for lic. chauff. driver. Must know city, like delivery. WA 6-5159. JY9

GIRL WANTED for Sat. & Sun. mornings to assist handicapped woman + 2 weeks in July while other help is gone (\$110). \$10 per weekend + gas allow. Must have own trans. Ref. req. Golden Valley area. 789-4257. JY13

GIRL—Part or full time. Bookkeeping exp. req. 336-2519. JY15

PART-TIME secretarial job yr. round. 10-15 hrs. per week. \$1.55 per hr. Some typing & bookkeeping. FE. 9-3215. Ask for Marie. JY15

### POSITIONS WANTED

CHILD CARE: 0-2 yrs. Lic. FE 1-9970. SS

BABYSITTING in my lic. home. Near U. Call 333-7770. JY20

TYPING & MIMOGRAPHING

TYPIST: Elec. typewriter. Specializing in Masters, Ph. D. 521-6629 after 5. SS

EXP. TERM. thesis and Medical typing. West 5-6739 or 374-2130. SS

ELEC. TYPR. English major, correct- ing & exp. proofreading. GR. 4-9425. SS

EXP. TYPING — Call 929-9470. SS

TYPING — JA. 3-0208. SS

EXC. TYPING. IMMED. serv. 331-5465. SS

EXP. TYPIST, prompt. 124-1963. SS

EXPERIENCED TYPING 488-5337. SS

EXPERIENCED, dependable thesis typing, Mimeographing and Duplicating—Donalene—824-1083. SS

TYPING 30c a page — 724-6481. SS

EXPERT & prompt thesis & manuscript typing. IBM. Ref. WA. 4-9071. SS

TYPING—Exp., prompt. WA. 6-3381. SS

TYPING, 25c incl. carbon. 698-6434. SS

TYPING, Exp. — 25c 836-7178. SS

TYPING—Will pick up at U. 537-9348. SS

EXP. TYPIST, thesis, etc. JA. 1-9583. SS

ACCURATE TYPIST — 825-1914. SS

ELEC. TYPR. English major, correct- ing & exp. proofreader. GR. 4-9425. SS

TYPING, 25c a page — 825-9794. SS

TYPING. Call 648-2862 aft. 5 p.m. SS

10 YRS. EXP. Thesis and term papers. Elec. typewriter. Maxine, 698-4903. SS

GEN. TYPING & Sctncls & Dittos— Mast. Elect. Typwr. Call 646-6465. SS

PROFESSIONAL TYFG: IBM. Thesis. Term paper. Mrs. Beaulieu. 336-1422. SS

TYPING — KE. 7-2118. SS

EXP. THESIS, manuscript and term paper typing. 825-8461, 833-9061. SS

EXP. THESIS, manuscript and term paper typing. 825-8461, 833-9061. SS

TERM PAPERS, thesis typing, near U. Phone PA 9-1854. SS

### ORCHESTRAS

MUSIC THAT WILL PLEASE. 1-9 pcs. Don Swain Orch. FA 4-5570 or Bob "Bubbles" Price Orch. 858-7432. SS

JIM RHODES ORCHESTRA "Suberb Dance Music" 831-7842. SS

THE MARVE LEVINE ORCHESTRA "All Campus Favorites" 699-0933. SS

# What's Doing

## Today

**UBOG Variety Dance**—9 to 12:30 p.m. Band: Russ Peterson. Spring quarter and summer session students. 50 cents. Union Terrace or main ballroom if it rains.

**Muslim Students' Assn.** Friday prayer—1:10 p.m. 325 Union. Celebration of Eid Muladinabi—7:30 p.m. Union lounge room. Morning prayer—5:15 a.m. Afternoon prayer—6:15 p.m. Evening prayer—10:30 p.m. 1523 S.E. 7th St.

## Saturday

### FOUNDATIONS

**Muslim Students Assn.** morning prayer—5:15 a.m. Noon prayer—1:10 p.m. Afternoon prayer—6:15 p.m. Sunset prayer—9:10 p.m. Evening prayer—10:30 p.m. 1523 S.E. 7th St.

## Sunday

### FOUNDATIONS

**Lutheran Student Assn.** Rice Street Romp—5:30 p.m. 1813 S.E. University Ave. S.

**Muslim Students Assn.**—Same as Saturday's listing.

**United Campus Christian Fellowship** morning worship—9 a.m. First Methodist Church—1209 S.E. 4th St. Morning worship—10:30 a.m. Prospect Park Methodist Church—30 Orin Ave. S.E. **University Lutheran Chapel and Student Center** Gamma Delta trip to Excelsior Amusement Park. Meet at 1:30 p.m. 1101 S.E. University Ave.

## Monday

**UBOG Square Dance**—7:30 to 10:30 p.m. Caller: Chuck Porter. Free. Union Terrace or main ballroom in case of rain.

### FOUNDATIONS

**Muslim Students Assn.** morning prayer—Same as Saturday's listing.

**United Campus Christian Fellowship** Twin Cities Summer Service seminars—7:30 p.m. Mr. B. Warner Shippee, director of St. Paul Urban Renewal. "Urban Renewal: It's Methods and Goals." 331 S.E. 17th Ave.

# One-man art show opens

Perry Brakke, CLA junior, opened his one man show Wednesday at the Lower Edge Gallery, 317 Cedar Ave.

Brakke is showing his paintings, prints and sculpture. The show will run through July 24.

**BRIDGESTONE 50**  
by Rockford



SEE THEM NOW!  
Only **239<sup>95</sup>**  
AT  
**THE BIKE SHOP**  
219 Oak St. S.E. 333-7334  
Across from the Football Stadium

A Real  
Opportunity to  
Select Your

# IMPORTED CARDS

Now Save  
**10%**

All New Stock

# CRANE'S GIFT SHOP

324 14th Ave. S.E.  
(IN DINKYTOWN)

STUDENTS AND FACULTY now for just **\$3<sup>50</sup>** AND\* 9¢ A MILE

you can rent a **HERTZ CAR**  
ALL DAY SATURDAY OR SUNDAY

- \*Rent a new Chevrolet Corvair all day Saturday or Sunday for only \$3.50 plus 9¢ a mile, or a Chevrolet Impala for \$4 plus 10¢ a mile!
- The low Hertz rates include everything—insurance, gas.

CALL 333-4444  
AIRPORT PA 2-4554 ST. PAUL CA 2-4828  
let **HERTZ** put you in the driver's seat!



**HERTZ**  
RENT A CAR

# OFFICIAL DAILY BULLETIN

Notice must be received by noon two days prior to publication and should be sent to Official Daily Bulletin, 217 Morrill Hall. Except for certain notices of unusual campus-wide importance, notices will be printed only once.

Students and staff are urged to read the Official Daily Bulletin as they are answerable for notices that affect them. They are also answerable for information on department bulletin boards.

Volume 67 July 9, 1965 Number 8

### ALL STUDENTS

#### II Summer Session Schedule Changes

**Additional Course**  
AnCh 201, hr and cr ar  
**Additional Sections**  
Encl 2B, sec 3, I MTWThF, VH 210  
Encl 2B, sec 4, II MTWThF, VH 205  
MuEd 51, sec 2, III MTWThF, Sch 3  
MuEd 52, sec 3, IV MTWThF, Sch 3  
Psy 4-5, sec 2, IV-VI MTWThF,  
WeH 101

**Hour Changes**  
MdBc 100 to IV, VI MTWTh, I-II F  
Nurs 172 to 1:00-3:30 MWF

**Room Changes**  
Art 20 to J 10  
Art 23 to J 10  
EPsy 294 to FoH 106  
GC 48a to Arch 135  
Ger 75 to FoH 209½

Math T to E 4  
Math 32 to Arch 135  
Math 55 to Arch 30  
Math 125B to Arch 20  
Math 131B to C 111  
Math 135 to Arch 135

### ALL CANDIDATES FOR DEGREES

**Commencement Material**  
The Packets containing commencement announcements and information for those expecting to graduate at July commencement are available and may be picked up at 343 Coffman Union beginning July 6, 7:45 a.m. to 1:00 p.m. and 1:45 p.m. to 4:30 p.m. through July 16.

**Commencement Rehearsal**  
On Thursday, July 15, candidates for all degrees will meet in Northrop Memorial Auditorium at 4:00 p.m. sharp for a rehearsal. Please use the center aisle only. You need not bring caps and gowns to the rehearsal. It is important that all candidates for all degrees be present, because basic instruction will be given for the exercises on Friday afternoon. The names of all colleges will be on standards placed in the center aisle. The rehearsal is short—it takes less than an hour.

**Commencement**  
On Friday, July 16, all candidates for all degrees will meet at 3:15 p.m. in the

lower mall between Vincent Hall and the Chemistry Building. (In case of rain, all will assemble in the underground garage of the Auditorium.) Candidates will assemble under the signs of their respective colleges and will march into Northrop Auditorium. Facilities will be provided for students to leave their hats, overcoats, and parcels. Attendants will be on duty during the commencement exercises. Candidates for bachelors' and doctors' degrees—but not masters' degrees—can check their coats, if they wish, since these gowns hide shirt sleeves. The procession will enter the Auditorium at 4:00 p.m. sharp. The ceremonies will be over at about 5:30 p.m. The recession will begin immediately at the conclusion of the exercises, and it is important that each student remain in line and follow completely the instructions which will be given at the rehearsal.

**President's Reception**  
President and Mrs. O. Meredith Wilson invite all members of the graduating class, their friends, and relatives, to a reception on the terrace of Coffman Memorial Union immediately after the commencement exercises. This is informal. In case of rain, it will be in the Main Ballroom of the Union.

To Stir Up the Atmosphere  
Around You . . .

**MOBILES**—light, lively and, well, mobile!

Down-to-earth things, too. Furniture, rugs & housewares.



**BONNARD-PRINTZ, Ltd.**

400 14TH AVE. S.E.

MINNEAPOLIS, MINN. 331-2101

Open 10 to 6 Mon. Thru Sat., Fri. Till 9



J. N. LARSON

# Summertime Specials

We think the place to get the most for your car buying dollar is from Larson Chevrolet. Our cars are High Quality and Fairly Priced!

- '64 Ford Country Squire Wagon. 8 cylinder, power steering, automatic transmission, power brakes, power windows, & radio. Another wagon for all your driving needs. **\$2495**
- '63 Ford Galaxie 2-door. 6 cylinder, white finish, standard transmission, radio. **1495**
- '62 Volkswagen 2-dr. sedan, 4 cylinder engine with 4-speed trans., radio, beautiful bright red finish. Also has Sun Roof for summer pleasure. **1095**
- '64 Buick LeSabre 4-door. 8 cylinder, beige finish, automatic transmission, power steering, power brakes, radio. Big car luxury at a realistic price. **2695**
- '63 Chevrolet Bel Air Wagon. 8 cylinder, Powerglide, radio, turquoise finish. Another from our huge selection. **1895**
- '59 Chevrolet Bel Air 4-dr. sedan. V8, Powerglide, power steer. Like new Almond beige. **895**
- '63 Chevrolet Impala Super Sport Coupe. 327 V8 engine, Powerglide, power steering, radio. Like new Honduras maroon. **2295**
- '64 Chevrolet Impala Sport Coupe. 8 cylinder, white finish, Powerglide, power steering and radio. **2495**
- '64 Buick Special 4-dr. Wagon. 6 cyl. engine w/standard transmission, radio. Here's an exceptional value. Dark blue finish. It's just beautiful! **2195**
- '64 Chevrolet Bel Air 4-dr. 8 cylinder, standard transmission, Powerglide, radio. See this one today! **2295**
- '63 Chevy II 1100 4-dr. 6 cylinder. Blue finish, radio, standard transmission. Good looks in this one will impress you from the first time you sit behind the steering wheel. **1595**
- '63 Chevrolet Biscayne 2-dr. 6 cylinder, turquoise finish, standard transmission. See & test-drive this car today! **1595**
- '62 Chev. Impala Spt. Cpe. 283 V8 engine, Powerglide trans., radio. Sparkling Nassau blue finish. Lots of carefree driving. **1795**
- '63 Chevrolet Impala Sport Coupe. 8 cylinder, brown finish, Powerglide & radio. A sporty car for summer fun! **2095**
- '63 Chevrolet Impala Wagon. 6 cylinder, Powerglide, radio. **1995**
- '63 Chevrolet Bel Air 4-dr. Sedan. V8 engine, Powerglide, radio. Saddle tan finish. **1795**
- '62 Chev. Biscayne 2-dr. sedan. Hi-thrift 6 cyl. engine w/smooth Synchromesh trans. AM & FM radio. Stunning twilight turquoise finish. **1295**
- '62 Cadillac 4-dr. Hardtop. 8 cylinder, beige finish, automatic transmission, power steering, power brakes, power windows, radio. **2795**
- '63 Tempest 4-door Sedan. 4 cyl. engine w/standard trans. & radio. Beautiful turquoise finish. A compact with the feel of a big car. **1495**
- '64 Chevrolet Bel Air wagon. 8 cylinder, beautiful, white finish, power steering, radio, Powerglide. Practical and ready for summer picnic fun! **2595**
- '63 Chevrolet Impala Sport Coupe. 8 cylinder, stylish maroon finish, Powerglide transmission, power steering, power brakes, radio. **2295**

THE  
WE PRACTICE J. N. GOLDEN RULE  
**LARSON**  
CHEVROLET CO.

EASY  
TERMS

BANK  
FINANCING

310 CENTRAL AT UNIV,  
630 EAST HENNEPIN

FE 9-1964  
FE 8-3049

JUST NORTH OF THE 3RD AVE. BRIDGE