

# U Is Big Clothing Source for Greek Relief

By Pat McNary

The University is one of the largest potential sources of clothing contributed by students to the Greek War relief drive. One garment from each of the 8,000 students registered here can help relieve the desperate situation in which seven million Greek men, women and children now find themselves.

"How would your wardrobe look if you had been able to buy nothing new for the past three years; if you could seldom find soap for washing, could never have your clothes dry-cleaned; if you had shared everything you owned?" This question is asked by the committee for Greek relief in a special letter sent Lyla Mae Anderson, president of SWECC.

Shoes rank with ammunition in the arsenal of Greece's guerrilla army, which is battling not only the invader but the bitter cold of the Greek mountains. One report tells of a tiny Macedonian village in which almost every one of the inhabitants had been without shoes during the cold winter months. They were astonished one day to see virtually a rain of shoes descending upon them from the sky.

At last, they thought, their prayers for footwear had been answered and they hurried to the church

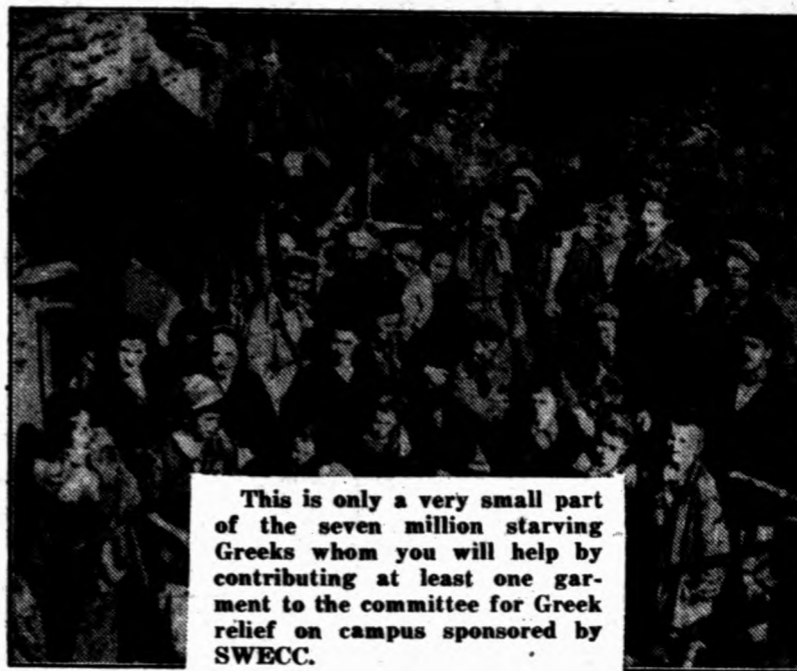
to give thanks and to divide up the divine gift. Two days later a mountain fighter slipped into the village and began inquiring about certain shoes which, he said, the Allies had promised his troops.

"They were sent to us as a gift from God," insisted the peasants, as they gave up the precious shoes.

"Last year most of the students in Athens were dressed in rags and their worn-out shoes were held together with bits of string," Miss Anderson said. "Although it may mean some slight inconvenience for us to bring that pair of shoes or that sweater or coat or scarf or cap or slacks, we must and can endure that small bit of discomfort to help fellow students and their families in war-ravaged Greece."

Distribution of the clothing is supervised by a joint commission of Swedish and Swiss representatives, and division of the available clothing has been a heart-breaking task, workers say. Almost all of the clothing shipments sent to Greece have been rushed to the inhabitants of villages bombed and burned by Axis troops during the military campaigns and in retaliation for guerrilla activities.

There are boxes in the Union, Folwell, Norris gymnasium, and Comstock and all sororities are maintaining collection depots.



This is only a very small part of the seven million starving Greeks whom you will help by contributing at least one garment to the committee for Greek relief on campus sponsored by SWECC.

## Non-Resident Fees Charged Vets Now Shown on Receipts

Fee statements of veterans under the GI bill will show non-resident charges from now on, rather than the regular resident charges they have previously shown, T. E. Pettengill, acting director of admissions and records, said yesterday.

The decision was the result of an administrative meeting held Wednesday morning in response to agitation by Twin City posts of the American Legion, who protested the University policy of charging the higher rates to veterans. The Legion threatened possible legal action if the veterans were not informed visibly as to the full extent of their fees.

## Carlini Will Give Violin Recital at Program Monday

Louis Carlini, violinist in the Minneapolis Symphony orchestra, will present a recital at 8:30 p.m. Monday in the Music auditorium.

Included on his program will be the Sonata for violin and piano by Ernest Bloch, the Violin Concerto in D minor, Opus 47, by Sibelius and the Bach Ciaccona for unaccompanied violin.

Mr. Carlini will also play the Suite Populaire Espagnole by Manuel de Falla which includes "El Pano Moruno," "Cancion," "Polo," "Austurianna" and "Jota." The program will close with a "Notturmo e Tarantella" by Karol Szymanowsky.

The violinist will be accompanied at the piano by his wife, Phyllis Mansfield. The recital is sponsored by the Music department. There is no admission charge.



Dr. Ralph D. Casey, director of the School of Journalism, renews his acquaintanceship with Edgar A. Mowrer, Washington columnist and lecturer, during the Minnesota Editorial association's annual convention in St. Paul, yesterday. Mr. Mowrer spoke last night at the association banquet. Dr. Casey and Dr. Charles A. Mann, professor of chemical engineering, addressed the Friday morning sessions of the convention.

# The Minnesota Daily

The World's Largest College Newspaper

The University of Minnesota, Saturday, January 20, 1945

## Re-Education Is German Problem, Says Reichardt

"Re-education is something the Germans must do themselves—the hard way. They must take the responsibility for their political development, and they must get rid of their ideas of super-nationalism," Dr. Konstantin Reichardt, professor of German, said yesterday, speaking before the International Relations club at the Union.

"If the Germans can't, we can't. It is something that cannot be forced upon them. We can only help them if they want to be helped. My idea and, I think, the general idea of the Allies is to give the Germans a chance—a chance to become civilized and cooperative so that they may be an important factor in the future."

Mr. Reichardt thinks that if American teachers, who are German refugees are sent to Germany to teach in the universities, the students will refuse to attend. They will not listen to these foreigners.

"Besides," he said, "the refugee will be considered by the people as a traitor. It would take the outsider a number of years to understand the psychology of the people."

"The Germans must be led back to a certain state and condition of mind that was good. Before 1935, the country had developed a scholarly education. Stress was placed on specialization, however, and not in giving the individual a broad education."

"Hitler's education aimed at developing nationalism and patriotism. He taught the doctrine of the

super-race. The present generation in Germany, the men who are from 20 to 25 years old, were 10 years old when Hitler came into power. They have had the Nazi doctrine pounded into them so thoroughly that it would be an impossibility to re-educate them."

Mr. Reichardt said that there is a probability that the influence of the United States in re-educating Germans may be very small. The Russians will have a greater voice in the matter.

"If Russia manages the re-education, a socialistic form of government will probably be set up in Germany," Mr. Reichardt said.

### Garver Will Address Hospital Administrators

Frederic B. Garver, professor of economics, will speak to a group of hospital administrators on "The Economic Principles of Rate Structures" at 9 a.m. Wednesday in the Center for Continuation Study.

Mr. Garver will discuss the business principles that "should be applied to the charges made by public service enterprises, including public hospitals."

## Coffey to Attend Labor Meeting

President Walter C. Coffey, and vice presidents Malcolm M. Willey and William T. Middlebrook will be University representatives Tuesday at the first meeting of the legislative committee to learn the background of the present labor dispute at the University.

Fred B. Snyder of Minneapolis, a member of the Board of Regents, and as many of the labor committee of the Regents as can attend will also be present. Mrs. Middlebrook, secretary of the Board, said yesterday.

The labor committee of the Board of Regents consists of George W. Lawson, St. Paul; Ray J. Quinlivan, St. Cloud; A. J. Olson, Renville; E. E. Novak, New Prague; and Daniel C. Gagne, Owatonna.

At its first meeting on Thursday, the legislative committee voted to meet first with the Regents or their representatives and then with the employes and their representatives.

## Charnley Explains New Daily Bureau

Representatives from 28 campus organizations attended The Daily coffee hour yesterday afternoon in the Union. Purpose of the coffee hour was to acquaint campus groups with a new Daily publicity bureau, and to explain its methods of handling publicity on and off campus for organizations here.

Mitchell V. Charnley, professor of journalism, addressed the meeting on the subject of preparing good publicity. Three essential factors in handling publicity are timeliness, reader appeal and a complete presentation, he said.

Coffee and doughnuts were served. Geri Hoffner, Arts senior and Daily editorial director, poured.

## What's With Tech?

# I. T. Slow to Answer Aggies

By Marg Chant

Ag campus students are beginning to wonder what has happened to the formerly rough and rugged engineers on main campus. Are they scared? Are they frightened? Have they failed to eat their Wheaties?

Or are they spending too much time getting in good physical condition to answer the tug-o-war challenge made last Saturday?

January 13 the following letter was sent to the Institute of Technology in main engineering building:

"Since the last remaining

strongholds of manhood at the University of Minnesota are the Institute of Technology and the College of Agriculture and Forestry on the Farm campus, it is therefore fitting that these two institutions be represented at the Winter Holiday to be held on the Farm campus on January 27.

The Winter Holiday committee extends its invitation to the Institute to send a 20-man team to compete with a 20-man team from Ag campus in a tug-o-war contest to be the high point of an afternoon of field events. The tug-o-war will be held at 4:30

p.m. and will be judged by impartial referees.

"May we hear from you within the next three or four days?"

The letter was signed by Lynn Sandberg, Ag junior, who is in charge of field events.

A sheet of paper put up in the Ag Union to be signed by Ag campus students interested in being fellow tug-o-warriors was filled within one hour. The unanswered letter puzzles the eager forestry and agriculture men. Were they wrong in assuming one of the remaining strongholds of manhood was the Institute of Technology?

Time will tell.



As one artist to another, Jean Rice, Arts sophomore, admires the handiwork of an unknown snow sculptor between the Law and Pharmacy buildings.

## 125,000 Children Hear WLB Music Program

A new WLB program, "Adventures in Music," is the only broadcast of its kind originating in this part of the country. The show is presented on the air at 1:45 p.m. Mondays for elementary school children. Hazel Nohavec, assistant professor of music education, and Mathilda Heck, music supervisor of St. Paul schools, supervise the program, which is part of the Minnesota School of the Air series.

"The classroom reception idea is growing," said E. W. Ziebarth, manager of WLB, "as shown by a 15,000 listener increase since 1938." In a survey made by Mr. Ziebarth last year, he discovered that there were 125,000 children in the state each week listening to the Minnesota School of the Air programs. Cards have already come in praising last Monday's "Adventures in Music" program.

The purpose in originating the

program was to supplement those programs on a secondary level which already exist.

"A great deal of interest has been shown in a series of this kind," said Mr. Ziebarth, "and the program has grown pretty directly out of requests from elementary schools in Minnesota."

Professor Ferguson of the music department has a regular program at 11 a.m. Thursdays which has been one of the most popular in the Minnesota School of the Air series, but was designated only for senior high schools.

Plans were discussed with music educators and school administrations, according to Mr. Ziebarth, to determine what kind of music should be included and what type of music program would be most interesting as well as educational for children on the elementary school level.

### Red Cross Unit Needs More Bandage Rollers

Elizabeth Sadley, director of the Red Cross surgical dressing unit in the Union, stressed the need for more bandage rollers in an interview yesterday.

"During the War Week exhibit which will be in the Union next week, Wednesday through Friday, students should be sure to visit the table for bandage rolling which will be in the hall," said Miss Sadley. "A representative of the surgical dressing unit will be there to explain the work and every student who can should add his name to the list of volunteers."

### Catholic Confraternity Group Meets Sunday

A religious discussion will be held by the Catholic Confraternity on the Ag campus at 7 p.m. Sunday night in the Ag Union lounge.

The Reverend Bandas, of St. Thomas, is the tentatively scheduled speaker, announced Lucille Fitzsimmons, Education junior, president of the Confraternity, yesterday.

## Black 'n' Blue Sunday Initiates Face Rough Weekend

Happy days may be ahead for the future initiates of the sororities and fraternities on campus, but for the most of them this will be a hectic weekend. Informal initiations, ranging from brief three-hour sessions to all-night affairs, will bring pledging to a close.

"Square meals" eaten with movements similar to the marching lines of the ASTP units, silver polishing, impromptu entertainments for actives, room painting and other similar acts will be performed by men and coeds, often dressed in weird costumes. All this comes before students are formally initiated into their respective fraternities. Although some of the informal initiations have already taken place, most of them will be held today. After the hectic ceremonies are over the more pleasant formal initiations will be held tonight and tomorrow.

## Nurses Club Sets Dinner at Union

The Public Health Nurses' club will celebrate National Public Health Nursing day at a dinner, Tuesday, in the Union junior ballroom.

Haven Emerson, professorial lecturer in public health and former public health commissioner of New York City, will be guest speaker, discussing the role of the public health nurse in health units. Marion Borreson, Public Health Nursing senior, and Mary Buryk, Nursing Education senior, will sing several selections.

National Public Health Nursing day will be observed throughout the country Friday. Designed to promote better understanding of the public health nurse and her role in protecting the health of the community, the slogan for the day will be "Know Your Public Health Nurse—Who She Is, What She Does."

## Thiel Is Appointed To Science Group

Appointment of George A. Thiel, geology department chairman, as representative to the National Cooperative Committee on Science Teaching was announced yesterday by the Geological Society of America.

Better preparation of science teachers is the goal of this committee founded by nationwide scientific societies.

Dr. Thiel will meet with the committee in Chicago early next month.

### Dr. Fuller Appointed Education Governor

Dr. E. Mechem Fuller, principal and assistant professor of the Institute of Child Welfare, was notified this week of her appointment to the Governing Board of the National Association for Nursery Education.

Dr. Fuller will attend her first meeting of the governing board at Ann Arbor, Mich., February 17 through 20.

### Veteran Club Elects Peterson Commander

Tom Peterson, Engineering freshman, was elected commander at the semi-annual elections of the Veterans club which were held Thursday.

Other officers are Bog Stenger, Engineering sophomore, executive officer; Dick Murphy, Arts senior, adjutant; Stan King, Arts sophomore, finance officer; Paul Qualy, Education sophomore, sergeant-at-arms.

### WAA Meeting Changed

WAA badminton players will meet at 4:30 p.m. every Monday night at Norris gymnasium instead of Tuesday night as had been originally planned.

## University of Minnesota Official Daily Bulletin

Vol. XLV Saturday, January 20, 1945 No. 66

### Administrative Notices

**REGENTS' MEETING**  
There will be a meeting of the Board of Regents on Friday, February 9. Please submit items by January 26.  
W. C. Coffey, President.

### NON-ACADEMIC EMPLOYEES, PAS MEETINGS

Deans, administrative officers and department heads.  
Below are listed the schedules of meeting of non-academic employees and supervisors with Public Administration Service staff representatives to discuss the filling out of the Position Classification Questionnaires for the reclassification survey. You are urged to make time available to your employees and supervisors so that they may attend one of these meetings. These meetings are for non-academic employees, including student part-time help.

Employees preferably should attend one of the meetings for the occupational group in which their present classification falls. It is to the advantage of every employee to attend one of these meetings. These meetings are for the explanation of the classification survey and for the distribution and explanation of classification questionnaires. It is the responsibility of the supervisor to determine when employees may best be given time off their work to attend one of the meetings, and for informing all employees under his supervision of the time, place, and purpose of the meetings.

There may be changes in the time and place of these meetings. Please watch revisions of the schedule.

**Main Campus Employees**  
Place: 320 Coffman Memorial Union  
Monday, January 22, 8:30 a.m.—Service Groups.

Monday, January 22, 10:30 a.m.—Fiscal and Clerical Groups.

Monday, January 22, 1:30 p.m.—Library Groups.

Monday, January 22, 3:30 p.m.—Service Groups.

Tuesday, January 23, 9:00 a.m.—Professional and Scientific Groups.

Tuesday, January 23, 10:45 a.m.—Professional and Scientific Groups.

Tuesday, January 23, 1:30 p.m.—Fiscal and Clerical Groups.

Tuesday, January 23, 8:00 p.m.—Open meeting for part-time students or any other employees who are not able to attend other meetings.

Tuesday, January 23, 3:30 p.m.—Library Groups.

Wednesday, January 24, 8:30 a.m.—Library Groups.

Wednesday, January 24, 10:45 a.m.—Service Groups.

Wednesday, January 24, 1:30 p.m.—Professional and Scientific Groups.

Wednesday, January 24, 3:30 p.m.—Service Groups.

Thursday, January 25, 9:00 a.m.—Fiscal and Clerical Groups.

Thursday, January 25, 1:30 p.m.—Service Groups.

Thursday, January 25, 3:30 p.m.—Fiscal and Clerical Groups.

**Agricultural Campus Employees**  
Place: 107 Engineering Building, Agricultural Campus

Monday, January 22, 8:30 a.m.—Service Groups.

Monday, January 22, 10:30 a.m.—Fiscal and Clerical Groups.

Monday, January 22, 2:00 p.m.—Service Groups.

Monday, January 22, 3:30 p.m.—Service Groups.

Tuesday, January 23, 9:00 a.m.—Professional and Scientific Groups.

Tuesday, January 23, 10:45 a.m.—Professional and Scientific Groups.

Tuesday, January 23, 2:00 p.m.—Fiscal and Clerical Groups.

Tuesday, January 23, 3:30 p.m.—Fiscal and Clerical Groups.

Tuesday, January 23, 8:00 p.m.—Open meeting for part-time students or any other employees who are not able to attend other meetings.

Wednesday, January 24, 9:00 a.m.—Fiscal and Clerical Groups.

Wednesday, January 24, 10:45 a.m.—Service Groups.

Wednesday, January 24, 2:00 p.m.—Professional and Scientific Groups.

Wednesday, January 24, 3:30 p.m.—Service Groups.

Thursday, January 25, 9:00 a.m.—Fiscal and Clerical Groups.

Thursday, January 25, 10:45 a.m.—Fiscal and Clerical Groups.

Thursday, January 25, 2:00 p.m.—Fiscal and Clerical Groups.

Thursday, January 25, 3:30 p.m.—Fiscal and Clerical Groups.

**Hospital, Medical and Dental Unit Employees**  
Place: All meetings except those at 1:30 p.m. are to be held in the auditorium of

Murphy hall. Meetings at 1:30 p.m. will be in Powell hall.

Monday, January 22, 8:30 a.m.—Service Groups.

Monday, January 22, 10:30 a.m.—Fiscal and Clerical Groups.

Monday, January 22, 1:30 p.m.—Nursing Groups.

Monday, January 22, 3:30 p.m.—Service Groups.

Tuesday, January 23, 9:00 a.m.—Professional and Scientific Groups.

Tuesday, January 23, 10:45 a.m.—Professional and Scientific Groups.

Tuesday, January 23, 1:30 p.m.—Fiscal and Clerical Groups.

Tuesday, January 23, 3:30 p.m.—Nursing Group.

Tuesday, January 23, 8:00 p.m.—Open meeting for part-time students or any other employees who are not able to attend other meetings.

Wednesday, January 24, 9:00 a.m.—Fiscal and Clerical Groups.

Signed: Office of Civil Service Personnel.

### General Notices

**Wrestlers Excused from Classes**  
The following wrestlers who will wrestle against Iowa Pre-Flight are recommended for excusal from classes following first hour on Saturday, January 20:

- Eastling, George.....IT 45
- Doseff, Ivan.....UC 46
- Lister, Roderick.....Dent 48
- Fritz, Curtis L.....Navy V-12
- Baken, Melvin P.....Navy V-12
- Nelson, Richard L.....NROTC
- Payton, Don.....NROTC
- Schroeder, Leonard.....NROTC

E. G. Williamson,  
Dean of Students and  
Professor of Psychology.

### Colleges of the University

#### COLLEGE OF SCIENCE, LITERATURE, AND THE ARTS

##### The Music Department

Examinations for the removal of incompletes in applied music will be held Thursday, January 25, at 3:30 p.m. At the same time, examinations for evaluation of transcript credits and advanced standing examinations will be held. Register in room 107, Music Building, for an appointed time.

Paul M. Oberg, Chairman.

#### THE MEDICAL SCHOOL

##### Department of Anatomy

The Anatomy seminar will meet Saturday, January 20, at 11:30 a.m., room 226, I.A.

Speaker: Dr. Berry Campbell.

Topic: The theory of the synapse.

All interested are cordially invited to attend.

E. A. Boyden, Chairman.

#### Physiology Pharmacology Seminar

The Physiology Pharmacology Seminar will meet on Tuesday, January 23, 12:30 in room 214 Millard hall. Dr. N. Bieter will discuss "The Toxicity of 'D.D.T.' in Laboratory Animals."

#### COLLEGE OF EDUCATION

##### Students' Health Service

A complete physical examination is required for all students in the College of Education who expect to be graduated at the end of the winter quarter. Seniors in this college who have not already done so are urged to make their appointments for these physical examinations as soon as possible at the desk on the ground floor of the Students' Health Service.

Ruth E. Boynton, M.D., Director.

#### GENERAL COLLEGE

##### Students' Health Service

A complete physical examination is required for all students in General college who expect to be graduated at the end of the winter quarter. Students graduating from this college, who have not already done so are urged to make their appointments for these physical examinations as soon as possible at the desk on the ground floor of the Students' Health Service.

Ruth E. Boynton, M.D., Director.

#### GRADUATE SCHOOL

The final oral examination of Nathan Sperber, candidate for the Ph.D. degree, major Agricultural Biochemistry, minor Organic Chemistry, will be held on Tuesday, January 23, 1945, at 3 p.m. in room 310 Snyder hall (University Farm).

Examining Committee: Professors Sandstrom, chairman, Arnold, Geddes, Smith, Lauer, and Bailey.

Theodore C. Blegen, Dean.

## The Minnesota Daily

The World's Largest College Newspaper

Official Newspaper of the University of Minnesota in Minneapolis, Minnesota



Published every morning during the college school year except Sundays, Mondays, holidays and the days following holidays and every Wednesday and Friday during summer school sessions except days following holidays by The Minnesota Daily at Commercial Press, 418 South Third Street, Geneva 2070.

Entered as second-class matter at the postoffice at Minneapolis, Minnesota, under the act of March 8, 1889.

VOL. XLV No. 64 Member Associated Collegiate Press, 1943-44 All-American Pacemaker

EDITOR GERRY SOHLE  
BUSINESS MANAGER ELDRIDGE DREHER

Night Editor Chuck Sweningsen  
Assistant Night Editor Frances Ahern  
Proofreader Kay Stiekny

## University Artists Course

NORTHROP AUDITORIUM

### WEDNESDAY

January 24th, at 8:30

# HOROWITZ

The World's Greatest Pianist

### A CERTAIN SELL-OUT

But There Are Some Seats Available Selling at \$1.20, \$1.80, \$2.40, \$3.00, Including Tax

Ticket Office - 109 Northrop



**SOCIALLY SPEAKING**

**Sleigh bells will ring out . . .**

. . . at the all-student sleighride at 8:30 p.m. today at the Lilac Way riding academy. Students will meet at 7:15 p.m. in the Union. After the ride hot dogs, doughnuts and coffee will be served. Admission is 50 cents. The party is sponsored by the Union board.

**Brunch . . .**

. . . will be served by Alpha Epsilon Phi in honor of their initiates after the formal initiation Sunday morning. Joan Margulies and Tessa Stein are in charge of the arrangements.

**Open house . . .**

. . . will be held at Newman hall Sunday. A buffet supper costing 25 cents will be served at 6 p.m. Dancing, bridge and other card games and an entertainment will follow. Terry Casserly is in charge.

**Neophytes . . .**

. . . of Chi Psi are Lawrence Brown, Henry Haverstock and John Childs.

**Additions . . .**

. . . to the active chapter of Kappa Kappa Gamma are Mary Catherine Burke, Jane Clements, Joan Cockcroft, Barbara Goodman, Mary Janet Morse, Peggy Nelson, Joan Reinke, Betty Rydell and Margaret Herbert, who will be initiated at 1 p.m. today.

**Founders day . . .**

. . . of Gamma Omicron Beta will be celebrated by a banquet at 6:30 p.m. today at the Falorium room of the Curtis hotel. One of the founders, Ruth Urbitsky, Ethel M. Radulesca, alumna, and Doris MacCracken, last year's chapter president, will speak. After dinner there will be a pledging ceremony.

**An afternoon ceremony . . .**

. . . will bring the following girls into the active chapter of Delta Delta Delta: Ann Griffith, Nancy Bertelson, Judy and Jane Couch, Virginia Levie, Margaret Gulan, Elaine Mielke, Ann Owen, Audrey Seaberg, Barbara Snyder, Maxine Ward and Emily Wheeler.

**Taken into . . .**

. . . Beta Theta Pi are Jud James, Jack Stevens, Bud Williams, Bernice Murphy, Mike Ranfranz, Jim Burau and Lyn Augufsting, new actives; and Bill Marcotte and Jack Little, pledges.

**New men . . .**

. . . in Phi Kappa Psi are initiates, J. D. Lane, Neil McGraw, Dick Anderson, Dick Whitney, Bob Ranssen, Lee Johnson, Bob Otte and Bob Wainer; and pledges, Dan Burns, Wayne Seymore, Bob Klass, Rex Hennell, Don Swanson and Don Chabot.

**Formal dinner . . .**

. . . in honor of the new initiates will be given by Zeta Tau Alpha at 7 p.m. Sunday. The speakers will be Jean Walmsley, toastmistress; Jeanne Mack, president; and Dorothy Buboltz, alumnae representative.

**Recent initiates . . .**

. . . of Alpha Kappa Psi are Guy Hole and John Majzner.

**Formal initiation . . .**

. . . of the new members of Alpha Omicron Pi will be held at 2 p.m. tomorrow. Initiates include Margaret Fiegal, Phyl Greve, Jan Hermann, Madeline Holt, Lis Johnson, Elizabeth Rez, Betty Ann Sawatzky, Phil Tack, Shirley Torkelson, Lorraine Wagner and Mary Lou Wolterstorff. Formal initiation will be held at 2 p.m. tomorrow.

**Successor . . .**

. . . to the house presidency of Gamma Phi Beta is Penny Thorsen.

**Inducted . . .**

. . . into Sigma Delta Tau are Sally August, Betty Beugen, Irene Chucker, Lois Cooper, Betty Lou Maydnet, Rhoda Hersh, Marily Roberts, Dorothy Schoen, Lois Swiller, Jean Tankel, Maxine Pretzker, Jacqueline Simon, Corene Milstein, and Marcia Norris.

**An all-sorority banquet . . .**

. . . sponsored by Panhellenic council will be held at 6 p.m. Monday in the Union. Oz Black, editor of the magazine section of the Sunday Tribune, will be the guest speaker.

**Into the fold . . .**

. . . of Pi Beta Phi will go the girls, who will be initiated from 9 a.m. to 2 p.m. tomorrow. After the initiation dinner will be served in honor of the new members. The list includes Joan Barnhart, Lee Barnhardt, Pat Brown, Mary Alice Dwyer, Nancy Eckenbeck, beck, Harriet Foster, Doris Fromm, Lorraine Hegvold, Marily Kaiser, Margery Krueger, Carolyn McLean, Nancy Oppegaard, Mary Jo Peterson, Mary Ann Peterson, Irene Raihle, Marcia Seidemann, Joan Vallentyne and Joy Wellsley.

**The house mother . . .**

. . . of Sigma Delta Tau, Mrs. Belle Shulman, will be the honored guest of the Mothers' and Fathers' clubs at a dinner at 6:30 p.m. tomorrow at the chapter house.

**New . . .**

. . . active members of Sigma Kappa will be initiated at 7 p.m. today. They are Dorothy Odegard, Barbara Rumble, Elizabeth Bruce, Marian Calph, Helen Webb, Joyce Streimer, Virginia Montgomery, Frances Osgood and Delores Upstill.

**In the know . . .**

. . . are Tom McGovern, Al Hilliard, Willard Hafdahl, Jerry Wicklund, Douglas Hunt and Ralph Wohlers, new pledges of Delta Tau Delta.

**Nouveau . . .**

. . . to the active chapter of Phi Delta Theta are John Kelly, Kirk Turley, John Ludwick, Ed Swenson, Bill Roell and Jim Bandelin.

**Dinner dance . . .**

. . . will be given by Sigma Nu at 6:30 p.m. today at the chapter house. At 3 p.m. tomorrow Roger Harris, Bruce Mathewson, Howard Costello, Thomas Burnett, Burton Brown, Fred Herschler and Dick Schmitz will be formally initiated.

**Damsels and dates . . .**

. . . will dance to the dreamy music of Bud Strawn at the Comstock-Sanford formal at 9 p.m. today in the main ballroom of the Leamington hotel. The guest list includes:

- |                     |                   |
|---------------------|-------------------|
| <b>SANFORD</b>      | Paul Lund         |
| Myrna Coles         | Monie Coles       |
| Jeanne Halling      | LT. Bob Walters   |
| Dona Syvud          | Fred Swartz       |
| Margaret Harrington | Douglas Shaw      |
| Marion Forbes       | Chuck Davis       |
| Audrey Eastvold     | Allen Bard        |
| Lois Lindsay        | Jim Mithun        |
| Margaret Engan      | John Kenney       |
| Mary Alice Long     | Dick Kieher       |
| Carol Oberbillig    | Cecil Bailey      |
| LaVonne Bailey      | Bob Karels        |
| Betty Clifford      | Lulu Fredrickson  |
| Nancy Norton        | Bragail Magnusson |
| Ardie Neilson       | Louis Jensen      |
| Elaine Vaala        | Erby Slatter      |
| Doris Erickson      | George Edgerton   |
| Betty Cuniff        | Scott Whitaker    |
| Mary Ann Lund       | Leroy Bazard      |
| Ruth Hegger         | Bob Rollin        |
| Gail Boyce          | Jack Thomas       |
| Janet Nickoelson    | Pvt. Herb Fisher  |
| Helen Patek         | Dale Helgesen     |
| Jan Nelson          | Harry Dandahl     |
| Pat Meyer           | Melvin Bauer      |
| Lois Clark          | Earl Meuli        |
| Ruth Holtz          | Joseph Tufigno    |
| Kathryn Sias        | John Hedges       |
| Trudy Saggau        | Bob Morterud      |
| Jean Wilson         | Philip Arznew     |
| Mary Louise Hadler  | Pete Boysen       |
| Margaret LeVan      | Phil Peterson     |
| Jean Olson          | Don Taylor        |
| Doris Thompson      | John Lundquist    |
| Marge Feigal        | Bill Mallinger    |
| Joyce Hoffman       | Kenneth Norcutt   |
| Maxine Romsland     | Henry Barli       |
| Marilyn Moss        | Alfred Guidise    |
| Gloria Bugni        | Matt Bushner      |
| Pat Harris          | Bob Heule         |
| Lois Brunsmann      | Steve Alnes       |
| Mardelle Brandon    | Dud Gullickson    |
| Norma Jean Smith    | Dale Milnar       |
| Hordis Johnson      | Ellis Kloster     |
| Marjorie Holm       | Delmar Buer       |
| Carol Holm          |                   |
| <b>COMSTOCK</b>     |                   |
| Peg Maplesden       | John Harker       |
| Susan Ringroesen    | Alber Holter      |
| Arlene Danley       | Bob Graisiger     |
| Merilee Seward      | Al Dreher         |
| Eileen Williams     | Rolf Anderson     |
| Marge Stevens       | Norm Greibach     |
| Alayne Roberts      | Rod McQuary       |

- |                      |                   |
|----------------------|-------------------|
| Nancy Keely          | Gerant Dahlstrom  |
| Dorothy Hawley       | Jerry Compton     |
| Pat Hanson           | Bob Platt         |
| Mary Alice O'Connor  | O. H. Buise       |
| Peggy Humphrey       | Vic Pearson       |
| Jeanne Krause        | Bob Weybrauch     |
| Sarah Chosen         | Ted Herman        |
| Mary Schottenbauer   | Jim Flynn         |
| Marjorie Wetherbee   | Jules Kubler      |
| Suzanne Brozik       | Warren Anderson   |
| Mary Wright          | Gene Adamczek     |
| Mary Anderson        | Jim Bandelin      |
| Carol Jentoft        | Bill Musing       |
| Helen Hornung        | Bill Miller       |
| Ruth Wiverton        | Howard Salts      |
| Maalfriol Solberg    | Don Peterson      |
| Barbara Weidenfeller | Les Finger        |
| Myrna Klaff          | Bob Rich          |
| Colette Weyer        | Tom McCurdy       |
| May DeKuyter         | George Deneff     |
| Dorothy Eppeland     | Jim Gunn          |
| Pat Sheppard         | Wes Grabow        |
| Dotty Chameralin     | Vern Harrington   |
| Virginia Montgomery  | Jim Price         |
| Carol Woodbury       | Warren Bayley     |
| Marge Lund           | Phil Christenson  |
| Barbara Barr         | Jim Ackerman      |
| Dorothy Potter       | Jim Samuelson     |
| Vi Scriver           | Bill Legler       |
| Marjorie Kent        | Bill Nuesle       |
| Gen Gilpin           | John Rossiter     |
| Ester Lewin          | Warder Cadbury    |
| Alice Bacon          | Ed Nickolson      |
| Betty Sell           | Bill Sell         |
| Esther Bjornsson     | E. Alfaro         |
| Irma Davis           | Howard Ruback     |
| Marion Kvaanik       | Bill Kramer       |
| Alice Bacon          | Ed Olson          |
| Shirley Holm         | Gene Walsh        |
| Elsine Feely         | Joe Kenneally     |
| Shirley Mansfeldt    | Cal Gold          |
| Bea Petrich          | Dick Greeno       |
| Betty Metcalf        | Ernie Otterholt   |
| Helen Wangen         | Bill Nelson       |
| Ann Young            | Bill Caster       |
| Ruth Loomis          | Jim Hodapp        |
| Rene Lost            | Sheldon Bernstein |
| Rosemary Dawson      | Ralph Townsend    |
| Betty Foley          | Lewis Fraiser     |
| Mary Barlow          | Don Zeller        |
| Marjorie Propps      | Ken Graunquist    |
| Doris Strieter       | Bob Tweek         |
| Ann Saggau           | Elmer Thiess      |
| Julliamarie Andrees  | Ed Carlson        |
| Lorraine Fodness     | Del Wichelman     |
| Angela               |                   |
| di Giambattista      | Leonce Bonheffl   |
| Helen Mitchell       | Bill Battersby    |

**Business Women's Tour**

Mrs. Ruth Lawrence, who has been in charge of the Northrop Art Gallery, will conduct a tour of the gallery for the Business Women's club at 7:30 p.m. Thursday. All women interested will meet at 7:15 in the club room at Vincent hall.

**Going Highbrow?**  
**Present Art Exhibition**  
**Attracts Student Crowd**

By Joyce Korman

The art exhibition, "The Debt to Nature of Art and Education," on display at the University gallery in Northrop auditorium, is proving popular with University students, Mary-Jo Harris, assistant director of the gallery, said yesterday.

"Although this exhibition was interrupted by the Christmas holidays, there has been a good turnout since the University reopened. This showing has attracted more students than the Swedish and English arts and crafts exhibits which were displayed during the summer and fall months did, she said.

Mrs. Harris went on to say that the symphony concerts have become an important factor in interesting students and the public in art appreciation. Under the watchful eyes of University coeds, music lovers may visit the gallery during intermission and before and after concerts.

A permanent gallery of matted prints and a traveling exhibition, usually from the Metropolitan Art exhibit or the Museum of Modern Art in New York, are on display at all times.

The material in "The Debt to Nature of Art and Education" belongs to the private collection of

Mrs. Gretchen Warren of Boston, and has been assembled to illustrate "essential symbolism." Because of its beauty and wealth of symbolism, the spiral is given chief place. Other basic forms, such as leaves, crystals of snow, and shells, as used in the visual arts of almost every age and civilization also are shown.

This exhibit will be on display until February 4.

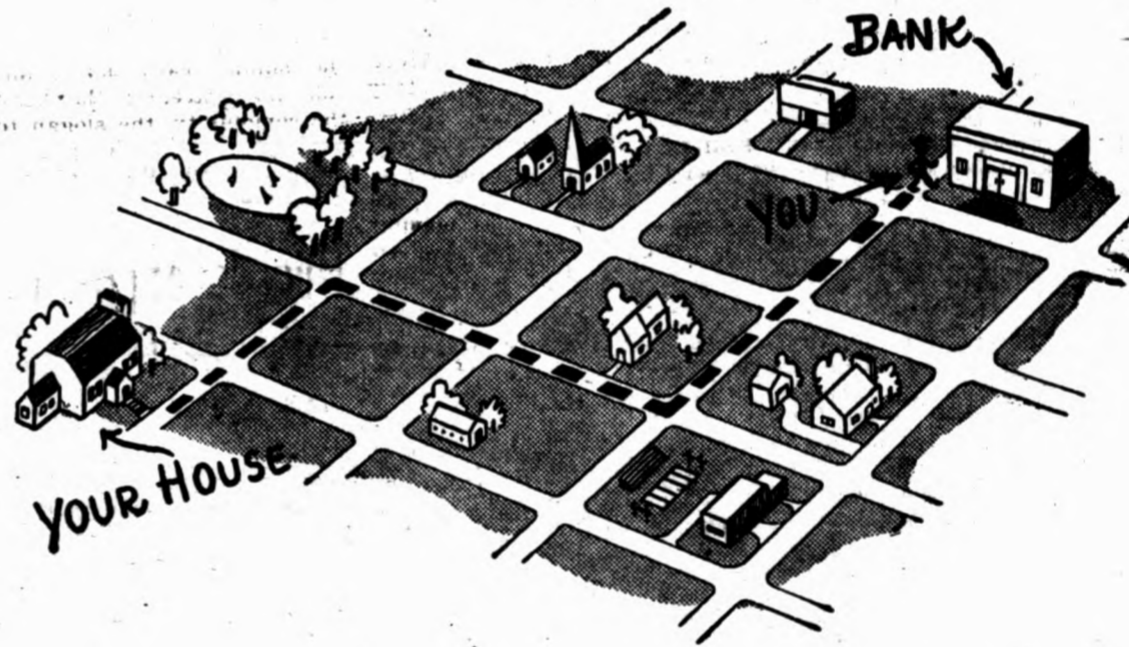
**Ski Films to Be Shown**  
**In Ballroom Monday**

"Ski Thrills in the Canadian Rockies," "Ski Whiz" and "Synthetic Rubber" will be shown from 12:30 to 1:20 p.m. at the Monday movies in the Union ballroom.

"Ski Thrills" is a color film showing the thrilling sights of a skiing trip in the Canadian Rockies. The next film, "Ski Whiz," shows scenes of experts in top form with a humorous touch. There is no admission fee and all students may attend.

**Ag Dance Instruction**

The first dancing instructions on the Ag campus for winter quarter will be given by Al Wiklund from 3:30 to 5:30 p.m. Monday in the men's lounge of the Ag Union. Admission is 10 cents.



**Is this trip**  
**necessary?**

**H**OW BADLY do you need the money you'd get by cashing in that War Bond?

Bad enough to risk withdrawing your support . . . even momentarily . . . from the fight your soldier is in all the way up to his ringing ears?

Bad enough to risk prolonging the war

by even so much as 30 thunderous seconds?

Bad enough to tamper dangerously with the life you've planned for your family and yourself when peace comes?

If you need the money that badly, Mister, okay.

But we hope you don't.

**Keep faith with our fighters**  
**Buy War Bonds for keeps**

*The Minnesota Daily*

# Gopher Sextet Downs Bermans Again, 3-1.

## Graiziger Stars With Two Goals

By M. E. Grinols

A crowd of 1,000 saw Larry Armstrong's Gopher pucksters defeat the Bermans, of the City League, 3-1, in a fast game on the Minneapolis Arena ice last night.

Bob Graiziger was, without doubt, the key man on the Gopher's offense, copping goals in both the first and final periods. His second score came unassisted in a lightning drive from the blue line, through the strong Berman defense, and straight into the nets.

## Vet Cyclone Cindermen Here Jan. 27

A veteran-studded Iowa State track team will be up here January 27 to take a shot at Jim Kelly's Gopher tracksters in the opening meet of the indoor season for Minnesota.

Almost all of the Cyclone runners and weightmen have returned and these are augmented by the recent arrival of several new, outstanding cindermen.

Put these two together and one gets a mighty tough opener concocted for Minnesota's track squad who will be led by such notables as Mark Brownstein in the dashes, Armin Baumann in the high jump and Ray Sharp in the hurdles.

Brownstein was second only to Buddy Young of Illinois last year in the 100-yard dash, and with more experience under his belt this year, Mark may be the top sprinter in the Big Ten.

Bauman led Big Ten high jumpers until wrenching his shoulder in midseason. He was just regaining his form towards the end of the track year, and is expected to rate high in his favorite event again this season.

Bob Kasper, feet-footed half-back on the Gopher football team last fall, has reported for track practice and Kelly sees in him one of the best prospects for the dashes and the hurdles that has come along in the past few years.

Kasper was an all-state track man in both the century and hurdle events a year ago at Aberdeen, S. D. His father is the famous Cy Kasper, former distance runner at Notre Dame.

When the basketball season is over, Kelly looks forward to George Kilen reporting to the track squad. Kilen was the St. Paul preps' top high jumper last year, has been known to clear over six feet with not much difficulty.

Footballer Dave Day will be putting the shot for the Gophers this year and chances are that Gil Gaarder, also of the grid team, will be back to fill in that capacity as he did last year.

Following is the complete list of men in each event as given by Coach Kelly:

- Sprints: Brownstein, Thompson, Damm.
- Hurdles: Sharp, Cranston, Kasper.
- High Jump: Baumann, Kilen.
- Broad Jump: Turnacliiff, Johnson.
- Quarter-milers: Anderson, Soukup.
- Half-miler: Lane.
- Mile: Wilder, Brink.
- Two-miler: Herhold.
- Shot-put: Day, Thompson.

The single Berman goal was scored on a pass from Glenn Morgan in the left corner to Ed Nicholson, nearer the goal in the first period.

Jim Wild gained the initial score of the game on an assist from John Adams, while the Bermans were still getting their footing on solid ice.

Penalties were confined to the two-minute variety, but there were plenty of those. Three were for tripping, one for illegal use of the elbow in a pileup behind the Berman blue line, and one was called on Gopher defenseman Al Opsahl for checking an oncoming player in center ice, ahead of his blue line.

It was a field night for the goalies. They made a total of 62 stops—37 to the credit of the Bermans' Don Landgren and 25 for Minnesota's Red McCabe.

These figures only start to hint at the preponderance of play in front of the Berman goal. From the starting whistle, the game moved toward Goalie Landgren and, for the most part, stayed right there.

The Gophers seemed to prefer a policy of "shoot and chase" rather than having the forwards stick-handle past the Berman defense. Wagnild and Morgan proved a formidable barricade as a defensive team, but they could not muster enough strength to stop the onslaught of Gopher stick-wielders.

Ed Robinson, center on the Berman pony line, showed the greatest agility on his team. Although he was halted by a tripping penalty, the Robinson face showed in almost every skirmish.

Armstrong's two forward lines are beginning to equalize in strength and the pony line, which was responsible for two goals, looked particularly impressive during the final period of the game.

**The lineup:**  
 Gophers: Carley LW, Wild RW, Adams C, Opsahl LD, Van RD, McCabe G.  
 Reserves: Gophers: Graiziger, Thompson, Klatt, P. Wild, Bermans: Yorza, Johnson, Maxey.  
 Scoring: First period: Gophers, J. Wild (Adams) 1:09, Graiziger (Klatt) 13:08. Bermans, Nicholson (Morgan) 15:35. Third period, Gophers, Graiziger (unassisted) 11:28.  
 Penalties: First period, Gophers, Opsahl, checking in center ice. Second period, Gophers, Graiziger, tripping; Van, illegal use of elbow. Bermans, third period, Robinson, tripping. Bermans, Morgan, tripping.  
 Referees: Frank Goheen, William McGone.

**Grappling Time Is Reset to 3 p.m. Today**  
 The time of the wrestling match between the Gophers and the Iowa Seahawks has been changed from 9:45 p.m. tonight to 3 p.m. this afternoon.



# Holmberg Hurt; McCamy To Start at Forward Post

Gopher basketball hopes for upsetting a favored Indiana basketball crew in the Field house tonight at 8:15 p.m. received a severe shot of gloom last night in an unlooked for scrimmage.

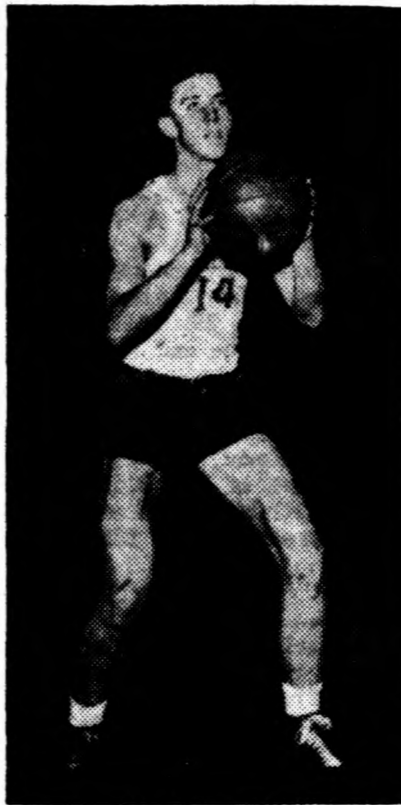
For Coach Weston Mitchell's choice to start at the forward position vacated this week by Joe Knoblauch, peppery Ralph Holmberg, went onto the injury list with a sprained ankle.

Half an hour after the practice started, the 6 foot, 3 inch Holmberg crashed into big Gordie Muske, and catapulted heavily to the floor, pinning his right ankle under him.

Ralph was helped by Trainer Jim Hunt and teammates to get to his feet and limp off the floor to the training room.

It was Hunt's statement after treating the injured player, that gave Mitchell cause for a little more pessimism. Holmberg definitely will not be available for the Hoosier contest according to Hunt, who added that Ralph may not be set for competition for some time to come.

As to whom will be the most likely player to step in the now twice-vacated forward spot, Coach



Ralph Holmberg  
On injury list

Mitchell has very little doubt. It probably will be Curt McCamy, another among the lankier type of cagers dotting the Minnesota roster.

The fact is that Indiana's basketball forces will be in top physical shape for tonight's battle and will be fresh from their one-point victory over thrice-defeated Purdue, Minnesota's well-drilled quintet has been designated the underdog by an almost infinitesimal margin.

One thing, however, is certain and that is that the Gophers will be on an average, taller than in any other previous contest. Mitchell's choice at center will be Kleg Hermesen. With him, McCamy and Gordie Muske, who will see part-time service in the hole, set the lineup height rises above six feet.

If the Gophers can play against the Hoosiers as they played against Purdue, Assistant Coach Dave MacMillan sees the game as a tossup. The Minnesota team is going to have to be plenty fast on its feet if it expects to match Indiana in speed, for it chooses the Hoosiers over Purdue in the rapidity department.

## THE MINNESOTA DAILY CLASSIFIED ADS

Phone MAin 8177, Ex. 717 for Ad Taker

CLASSIFIED INDEX	LOST—	FOUND—
<p style="text-align: center;">Announcements</p> <p>1—Autos for Sale                      2—Automotive Trades                      3—Wanted Automobiles                      4—Service Stations                      5—Bus Lines                      6—Dining and Dancing                      7—Lodge and Fraternity Notices                      8—Lost and Found                      9—Professional                      10—Personals                      10-A—Schools and Colleges</p> <p style="text-align: center;">Business Service</p> <p>11—Barber Shops                      12—Beauty Service                      13—Cleaners, Hatters, Tailors                      14—Laundries                      15—Electric Service                      16—"Fix It"                      17—Furniture Repairing                      18—Locksmiths                      19—Moving, Hauling and Storage                      20—Printing, Office Equipment                      21—Sewing                      22—Shoe Repairing                      23—Cafes</p> <p style="text-align: center;">Employment</p> <p>24—Help Wanted Male                      25—Salesmen Wanted                      26—Help Wanted Female                      27—Male Work Wanted                      28—Female Work Wanted</p> <p style="text-align: center;">For Sale</p> <p>29-A—Pets                      30-A—General</p> <p style="text-align: center;">Rentals</p> <p>31—Rooms Furnished                      32—Rooms Unfurnished                      33—Room and Board                      34—Furnished Apartments                      35-A—Unfurnished Apartments</p> <p style="text-align: center;">Merchandise</p> <p>36—Bicycles and Motorcycles                      37—Food and Food Products                      38—Musical and Radios                      39—Watches, Jewelry Repair                      40—Miscellaneous For Sale                      41—Garage Apartments                      42—Garage Rooms                      43—Rooms for Boys                      44—Rooms for Girls                      45—"Swaps"                      47—Wanted Merchandise</p>	<p>ONE black and green Sheaffer pen. Vic. Vincent and Armory, Tuesday, P.O. 5701.</p> <p>GOLD wrist watch with rose-colored face. Vic. Beacon and Union Sts. Wednesday afternoon. Reward. Call Ma. 8177. Ex. 217.</p> <p>GREEN spiral Fine Arts notebook; brown woad scard. Gl. 2959.</p> <p><b>PASSENGERS WANTED—</b>                      FROM 52nd, Chicago en route. First hour M-F, second Sat. P.O. 9512.</p>	<p>SHEAFFER pen found near Murphy Hall. At. 2066 after 5:00.</p> <p>PARKER 51 pen, near Sanford Hall, before Christmas. Ma. 8177. Sanford, Room 349.</p> <p><b>WANTED—</b>                      LETTER draftsman who knows contract bridge to create attractive chart from new idea for bidding instruction; preparatory to instruction. Ge. 6087 after 5:30.</p> <p><b>HELP WANTED—</b>                      FRATERNITY house wants 3 busboys. Call Gl. 1369. Ask for Reifel.</p>

For Quick Results Use Daily Want Ads

Words	1st Day	2nd Day	3rd Day
1-11	.25	.50	.60
11-17	.35	.65	.80
17-23	.50	1.00	1.20
23-29	.65	1.25	1.50

Bring or Send Want Ads to  
**Daily Business Office**  
 Room 10-A, Murphy Hall

NORTHROP AUDITORIUM • UNIVERSITY OF MINNESOTA

## Minneapolis Symphony Orchestra

• • • • • DIMITRI MITROPOLSKIS, Conductor • • • • •

Tomorrow Afternoon at 4:30, January 21

### TWILIGHT CONCERT

PROGRAM: Overture to "Le Roi d'Ys"; Lalo: "Havanaise", for Violin and Orchestra; Salut-Saens; Symphony in D minor, Franck

PRESENTING AS VIOLIN SOLOIST

## LOUIS KRASNER

RESERVED SEATS (Incl. Tax): 50c, 75c, \$1.00. NOW ON SALE at Ticket Office, 106 Northrop Auditorium; Downtown Ticket Office; Field, Schlick's (Saint Paul).

FOR QUICK RESULTS—  
USE DAILY WANT ADS