

SA Elections Void

The 1960 all-school elections were called off at 10:00 a.m. last Tuesday by the Rules and Election Chairman Dave Erickson due to ballot box stuffing, on the part of UMD students.

As Rule Chairman, Erickson has the power to declare student election null and void if he believes any indiscretion has taken place during the election proceedings.

"One student voted seven times, using different activity cards," commented Erickson immediately following the election nullification. "Another group of students were filling out ballots for those who lacked the intelligence to vote for themselves.

"This is unfortunate," con-

tinued Erickson, "because this is the biggest turnout we've ever had for an all-school election." Erickson and Kraus noticed that there is a "strong possibility" that the administration of UMD will take over Mondays election proceedings because of "students inequality."

Erickson said he called off the election so that no person will enter affairs under such a cloudy situation."

UMD-SA president Thomas Kraus added that, "active students" obtained activity cards from friends for this purpose. This is against University rules.

(Editor's Note) The University of Minnesota, Duluth Student Activity Cards are "non transfer-

able." The university reserves the right to pick up and void these cards when presented by any person other than the student to which that card was issued.

Kraus and Erickson both declined to divulge the names of the students who were implicated in the stuffing of the ballot box.

Erickson said that another election will be held next week on Monday and Tuesday, May 16 and 17.

Election fouls were first noted by Ann Gaul, a student volunteer who officiated at the election desk at the time of the stuffings. Miss Gaul reported this action to Erickson, who in turn cancelled the election.



Voting booth, in Kirby Hall, looks bleak following the election close-down last Tuesday.

VOTE
Monday or
Tuesday

THE UMD STATESMAN

PROM
MAY 21

VOL. 30

RA 4-8801

Ext. 212

FRIDAY, MAY 13, 1960

NIGHT No. RA 4-7713

No. 26 27

Outstanding Students Receive Awards

Prom Features Musical Variety



From left to right: Frank Borelli, Lillian Luoma, Liz Franz, Esther Korpi and Beverly Keating.

Red Hot'n Blue will be the theme of the 1960 prom sponsored by the Kirby Program Committee and the UMD Student Association. A new and unique idea for decorating Kirby Student Center has been contrived by the prom committee which consists of Elizabeth Franz — chairman, Frank Borelli and Beverly Keating — publicity, Lillian Luoma and Jim Maki — decorations, Martin Kyrola and Esther Korpi — tickets.

Entertainment will be provided on second floor by none other than our own UMD students. The entertainment will take place between 10:30 and 12:00.

This year, as last,, formal invitations will be given with the tickets which went on sale Tuesday, May 10. Be sure to buy your prom tickets early. All of the details concerning the 1960 prom are as follows:

Time: 9 p.m. to 1 a.m.
Date: May 21, 1960
Tickets: On sale up until prom. \$2.50
Theme: Red Hot'n Blue
Orchestra: Merinotes

The orchestra that is scheduled to play is a fifteen piece band from St. Mary's College, Winona, Minnesota. The orchestra is a marvelous one and will provide the student body with smooth and harmonious dancing music.

Remember to buy your tickets for the prom early, and this point is urged by the prom committee. Tickets are available at the Kirby Booth in Kirby Student Center.

Help with the decorations would be greatly appreciated, and if you can possibly lend your services to the prom committee, contact one of the above mentioned of the prom committee.

Marion Kukkola, a graduating senior from Cromwell, was awarded that Sieur du Lhut award by Regent Richard Griggs at the 5th annual Recognition dinner Tuesday night in Kirby ballroom.

The Sieur du Lhut award is the highest recognition given for outstanding activity and leadership in student affairs. Marion will graduate with a B.S. degree in June with a major in English, and minors in speech and music.

Miss Kukkola was cited for being editor of the UMD Humanist, feature editor of the Statesman last year, yearbook editor for Sigma Alpha Iota, vice president and secretary of Alpha Psi Omega, plus outstanding work in dramatic productions on campus, music and other activities.

Miss Harriet Harrison, assistant professor and student counselor who retires in June, was awarded a faculty-staff award—for leadership and service to student life. Miss Harrison was also awarded a citation from the Religious Council.

Moy F. Gum, student personnel worker and instructor, and Marjorie Papke, student personnel worker in OSPS office, were also awarded faculty-staff awards.

Outstanding organizations named were Beta Phi Kappa, social fraternity, which participated in the Heart Fund and March of Dimes drives, and Alpha Nu Omega, social fraternity, whose members took part in the

Kukkola Wins Top Award



Marion Kukkola



Miss Harriet Harrison

city cleanup drive and helped rearrange the 3rd floor study area in the UMD library.

Dean Chamberlin presented fifteen Bulldog awards for outstanding leadership in student and campus activities to: Gerald Abelsen, Duluth; Susan Barber, Duluth; Barbara Coughlin, Duluth; Thomas H. Dahl, Duluth; David W. Erickson, Duluth; Neda Humphreys, Duluth; Esther Korpi, Chisholm; Thomas Kraus, Duluth; Gerald Maeckelberg, Duluth; Richard E. Pease, Duluth; Robert Pike, Duluth; Harold Segal, Duluth; Karen Skoglund, Duluth; Duncan Steinman, Minneapolis; and Robert Strom, Duluth.

Thirty-five Arrowhead awards for leadership in positions of responsibility went to: Judith G. Anderson, Two Harbors; Charles Andresen, Duluth; Barbara Ball, Duluth; Frank Borelli, Duluth; Janet Brander, Cloquet; Kathleen Burns, Duluth; Dorothy L. Erickson, Tofte; Tony Fiskett, Haddonfield, N. J.; Elizabeth Franz, Duluth; Sandra Gundersen, Moose Lake; C. Gary Holzer, Duluth; William Jacott, Duluth; Lynn D. Jamison, Sandstone; Barbara G. Johnson, Duluth; Beverly Keating, Duluth; Nora Kelly, Duluth; Marion Kyrola, Duluth; Karen M. Lenio, Embarrass; Kenneth Maeckelberg, Duluth; Jean Magee, Duluth; Thomas Martin, Duluth; Connie B. Nelson, Duluth; Joyce Nelson, Duluth; Robert O'Connor, Duluth; Phyllis Palmer, Duluth; William Peterson, Duluth; Kirk Ransom, Wayzata; Lino Rauzi, Maywood, Illinois; Rudolph Rosenquist, Duluth; Russ Schoumaker, Duluth; Thomas Schellinger, Duluth; Donald L. Shovelin, Duluth; Gary Snow, Fort William, Ontario; Bernard Webber, Duluth; and Nancy Westberg, Duluth.

Student Production Coming

The Student production, Juno and the Paycock, will be presented in Main 200, the Student Studio Theater, Memorial Day weekend, May 26-27, and 28.

Juno and the Paycock is an Irish comedy written by Sean O'Casey. It is being directed by

David A. Ericson under the guidance of Dr. Harold Hayes.

The cast includes: Cornelia Dacy (Juno); David A. Ericson (Captain Boye); Sue Miners, (Mary); Tom Martin, (Johnny Boyle).

Tickets can be obtained at the door.

Ballot Stuffing Dismissed As "Hijinx"

According to the *Duluth Herald*, "Alleged ballot box stuffing in UMD's all-school election was dismissed by school officials as "hijinx and confusion."

How such an act like "stuffing the ballot boxes" can be called "hijinx and confusion" is above me. To me it seems that it is just plain illegal. According to the *Herald*, "students thought that they didn't think it was wrong for a student to vote using someone else's activities card." Every student has on the back of his activity card the following printed: "NOT TRANSFERABLE The University reserves the right to pick up and void this card when presented by any other than the Student to whom the card was issued."

Elections at UMD are one of the high points of the year. It is absurd for a few students to jeopardize the entire election for the sake of themselves. If students want to nominate a candidate for office, the time to do it is in the nominating convention, and if they want to have a write in candidate, they should go about it ethically and legally.

The elections could probably be made more honest, and the operation of voting faster, by the employment of voting machines. Many high schools in the city receive voting booths from the city for their student elections. It would probably help the situation at UMD if voting machines were placed here..

C. H. A.

Music Soothes Savage Beast

By SUE MINERS

Machlis once said, in attempting to define music, that "music is the language of the emotions." Others have attempted definition by saying that it is a view of life, an artist's interpretation of human destiny, an elusive state of mind.

Whatever its definition, whatever its effect, music is prevalent in most situations and in most places, UMD notwithstanding.

With the installation of the new stereo system, comprised of a Garrard turntable which contains a Shure cartridge, a Bogen amplifier, and two AR-2 speakers, there has been an influx of requests for not only popular, but classical records. This appreciation of the classics has been developed by wise purchasing on the part of the Educational and Cultural Committee of Kirby Student Center who have found their choices amidst the unique, rather than the chamber music and dynamic symphonies. Current favorites are the *Rhapsodies*, particularly those of Enesco, the cannon-ringing *1812 Overture*, and Ravel's bright and verving *Bolero*. The Kingston Trio and Belafonte by no means take a back seat to this new-found classical appetite of UMD students, not do the Dukes of Dixieland or the rendition of "Gone With the Wind" by Dave Brubeck's group. Late evening studying develops musical tastes on a line toward, and inclusive of, Gleason's "Velvet Brass."

The Kirby Student Center Committee is now planning an hour long listening period daily to enable students to become better acquainted with what the Center has to offer, musically, and to develop an appreciation of what now may be the unfamiliar.

To The Editor

April 20, 1960

Dear Editor:

I am a student at the University of Pennsylvania and receive the *UMD Statesman* regularly. The reason for my getting the *Statesman* is that I'm a transfer student from UMD and live in Duluth.

My purpose in writing this letter is to express my views of the Negro situation here in Philadelphia where the Negroes comprise about 30% of the cities total population.

When I lived in Duluth I held the same opinion as most people there do. This opinion is that the Negroes aren't considered as our equals or accepted in most societies. In Duluth we know the situation is different than this. There, the colored people are given as equal an opportunity as possible. I believe the reason for this is that there aren't a great many Negroes in Duluth, and the Duluthians don't realize how the colored people live when in a large group. If the people who criticize the actions of the whites in the South ever lived in the South or any place where there is a large colored population, I'm sure they'd think differently about the situation. It's easy for people to criticize a situation and justify themselves behind a shield of human rights. But when a person comes right down to the facts, they really don't know what they're talking about or what the real situation is.

I am merely trying to bring out a fact within which many people are not familiar. That is, that when the Negro population becomes dense in an area, it is often the case that their standard of living does not measure up to that with which the average white is accustomed. Be that the fault of white, colored, or both is not the question confronting us. It is a fact which cannot be ignored. Perhaps this situation can some day be righted. But at the present time we are confronted with this problem.

Very truly yours,
Jerome Shapiro

Dear Editor:

Is it time to say good-bye to student apathy, hello interested dishonesty? Let's give orchids to all those interested students, who, with regard to real representative government, let other students use their non-transferable activity cards. It's too bad that when there are several interested and qualified candidates for the highest campus office, some stupid jerks have to smear their names in dishonest voting practices. It is understandable why the latter individuals don't ever bother to file for campus offices.

We are constantly made aware of the dishonest student practices in the library, bookstore, lounge, and cafeteria, but when it happens in student elections it's hard to take. Maybe it's because we think that the small number of students who bother to vote, are really interested in what they are voting for, and therefore are honest. When did we import the dishonest interest?

James Johnson
Roseau, Minnesota



HOW TO SUCCEED IN
GROUP LEADERSHIP
COURSES

Northern Students Back Negro Sit-in Movement

By ROBERT STROM

One of the primary reasons why the National Student Association Conference on the Negro Sit-In Movement, recently held in Washington, D. C., was called, was to point out that the northern United States is an important part of the whole movement for racial integrity, dignity, and equality of opportunity. The representatives from UMD, Duncan Steinman, Robert Strom, and Russ Schoumaker, attended this conference to gain a clearer understanding of exactly what the movement is, what has taken place, what is presently being done, what the reactions have been, and what is being planned for the future. Because we are primarily concerned with the northern segment of this movement, the following statements will be concerned with that aspect.

This integration movement is probably today's most pressing American domestic problems; and although most Americans think they know what these minority groups are striving for, many do not. A primary misconception is that they are working toward equality of mankind. This is incorrect, because they are working toward the true principles of democracy, and equality of man is not one of these principles. Democracy endorses a competitive society, and as long as there is competition, there will always be one man above another. Rather, the most we can hope to attain is equality of opportunity without discrimination of race, color, or religion. This is what these minority groups are striving for.

To show what action the North has taken, what is presently going on, what is planned for the future, and what the reactions have been, the case of Yale University in New Haven, Connecticut, will be cited. Action at Yale was initiated by the medical students, the divinity students, and the local chapter of the NAACP. Daily picketing of the New Haven Woolworth stores has been very successful in making people aware of Woolworth's discriminatory policies. About a thousand pieces of literature are handed out every day, and an average of close to three hundred people turn away from Woolworths daily when they are informed about the nature and reasons for the picketing. The "economic squeeze" of the New Haven Woolworth stores has been so great, together with the fact that many people will not cross a picket line, that they are now giving away free ice cream and potato chips to attract customers. Fund-raising has also been very successful with over \$1,000 raised so far in New Haven. Together with Yale students, the various churches of the city are now beginning to participate, as are other charitable and service groups. These funds are used for legal purposes such as bail and lawyers' fees, and also for non-discriminatory scholarships. The students and community organizations also have engaged in an active

(Continued on Page 12)

The UMD Statesman

Vol. 30 DULUTH, MINNESOTA, FRIDAY, MAY 13, 1960 No. 26

Official student newspaper of the University of Minnesota, Duluth, Minnesota Published each Friday during the college year excepting holidays and examination weeks. Editorial and business offices in Washburn Hall, Room 109. Second class mailing privileges authorized at Duluth.

Printed at the Labor World, Inc., 31 East Michigan Street, Duluth

Subscription Rates: \$1 per quarter or \$2 per year mailed upon request.

BUSINESS MANAGER
Kathie Lund

EDITOR-IN-CHIEF
Charles Andresen

Managing Editor Barb Coughlin
News Editor Charles Hoffman
Feature Editor Sue Miners
Sports Editor Tony Fiskett
Copy Editor Pat Hugdahl
Circulation Patrick Abrahamson
Art Editor Ken Maekkelbergh
Ad Manager Sue Hatch

- EDITORIAL STAFF -

Ross Anderson, Anita Wippler, Carol Anderson, Sharon McGenty, Kathy Fleck, Marsh Cohen, Harry Fischman, Pete Shean, Marcia Anderson, Liz Limon, Kathy Lewis, Sue Hatch, Harry Hooper, Bette Anderson

May Day ... 1984 Fall & Summer Advisement Being Held All Next Week

By FRANK THOMAS and TOM SMITH

As J. Fredgar Fox called the daily meeting of the UMD Committee of Student Safety to order on May Day, 1984, ominous clouds of suspense pervaded the atmosphere. All of the 105 student Newspapers had this day reported the outbreak of new violence as the result of the stupendous increase in student participation in extra-curricular affairs.

J. Fredgar nodded to Ole Paladin who reported that all of the members were present and unarmed. The tenseness subsided somewhat. Ole gurgled into his walkie-talkie. Immediately the doors opened and Thomas Mause, past president of the UMD-SA, maniced by two enormous Phy. Ed. majors carrying short lengths of rubber hoses, was brought before the committee. J. Fredgar stared sternly. "Mr. Mause," he barked, "You have been accused of advocating and abetting increased participation in student affairs. Partially as a result of this, our campus is now plagued with bloody outbursts resulting from conflicts of student groups. You have seriously harmed the holy cause of apathy. The administration demands your removal and punishment. Do you have anything to say?"

Mause looked up meekly. The huge sign above J. Fredgar's enormous desk, "Help Make UMD Safe for Apathy" glowered at him. "I only want to say" . . . Mr. Mause began . . . J. Fredgar leaped to his feet. "Speechmaking in contrary to every ideal of apathy," he shouted. Mause sank to the floor under the impact of Paladin's heavy leather boot upon his groin. "Mause," J. Fredgar said, "You have sinned grievously against the holy ideal of apathy by your incessant efforts to engender greater participation in student activities. It is the ruling of this board that you will be deprived forever of your parking permit." "No, no," Mause sobbed spasmodically as the two goons dragged him from the room.

At this time a muffled explosion from one of the incessant riots shook the bomb proof walls of the Administration Inquisition Center. Fully conditioned to such incidents, J. Fredgar remained unruffled. He nodded to Ole. Ole mumbled into his walkie-talkie. The door opened and a slight pallored man was drugged in by the efficient Phy. Ed. Majors. "Bigwind O. Bettlebrow," J. Fredgar snarled, "you have been called father of this movement for more participation in student affairs which has led to this blasphemous state of infamy. Is it not true that you were quoted as saying as early as 1958, that student activity is beneficial and should be encouraged?" Bettlebrow cringed, both from J. Fredgar's vitriolic attack, and from the burst of machine gun fire which penetrated the five-foot thick concrete walls of the Inquisition Center. Bettlebrow opened his mouth as if to speak, and was promptly stricken to the floor by a violent blow from a trudgeon held by Ole. "You despicable cur," J. Fredgar bellowed, "you symbolize everything I hate, and everything which is evil." The board broke out in cheering. "When I think of the blissful state of apathy which you destroyed, I do not hesitate to invoke upon you the worst of sentences. It is the decision of the Administration that you will be banished to the southern branch where you will assume the worst of occupations—that of Public Relations Director for the University football Team.

Bettlebrow sobbed convulsively and was dragged from the room despite his incoherent mumblings for clemency.

(In our second article, we will visit the Spring, 1984, UMD-SA Meeting.)

Monday, May 16, marks the first day of advisement week for the fall quarter, 1960. All students currently enrolled who plan on returning in the fall are reminded that appointments must be made as early as possible for a conference during advisement week, Monday, May 16, through Friday, May 20.

All students who plan to attend Summer Session will also be required to plan their summer program at this time and secure advisers' signatures.

Beginning on Thursday, May 12, of the week prior to advisement, a special card may be secured in the Office of Admissions & Records, Room 130, Kirby Student Center. This card may be picked up at any time from Thursday, May 12, through Wednesday, May 18. Absolutely no advisement material may be secured after Wednesday, May 18. This is done to encourage early advisement. In the case of Summer Session students, all registration materials must also

be secured for completion of the summer program.

Completed program cards must have the advisers' signatures and must be returned to the Office of Admissions & Records no later than Friday, May 27, following advisement week.

A duplicate Fall Quarter sheet which will be furnished at the time the program is requested, must be retained by the students for their records and returned in the Fall.

Information called for on the program card, which is returned to the Admissions & Records Office, must be furnished accurately and completely since this card will be used as the basis for mailing Fall Quarter registration permits during the summer. Students must be certain that the address listed will be a location that will assure them of receiving any mail addressed to them during the summer.

It is strongly emphasized that students who do not comply with the advisement and admissions office procedure will be required to register on the last day of Fall registration.

**HUMANISTS
NOW
READY**

**Obtain at
Kirby Desk**



For fine quality diamonds
at a reasonable price,

Shop first at —

Hagley & Company
Jewelers

established 1883
315 West Superior Street
Diamond Rings Priced
from \$50.00 incl. tax
Use our 10-month pay plan
at no extra charge.

Official Weekly Bulletin

FALL ADVISEMENT

Fall Quarter advisement for currently enrolled students will take place during the week of Monday, May 16 through Friday, May 20.

Advisement material must be secured in Room 130, Kirby Student Center, prior to appointments with advisers. No materials will be distributed after Wednesday, May 18.

Completed and signed advisement cards must be returned to the Office of Admissions & Records not later than Friday, May 27.

Students who do not comply with advisement procedures will be required to register on the last day of Fall registration.

SUMMER SESSION ADVISEMENT

Since advisers' signatures are required, currently enrolled students who plan on attending Summer Session may secure advisement during the Fall Quarter pre-advisement week of Monday, May 16, through Friday, May 20.

Summer Session registration materials may be secured in Room 130, Kirby Student Center.

After advisement is completed and advisers' signatures secured, materials should be retained until completion of registration on Monday, June 13.

GRADUATING SENIORS

There is a tentative listing of all June 1960 graduates in the Office of Admissions & Records, 130 Kirby Student Center. Please check this list and report any omissions or corrections to Mrs. Watson.

H. W. Archerd, Supervisor
Admissions & Records
Office of Student
Personnel Services

EXCUSED ABSENCES

The following students will be participants in an approved Univer-

city activity, namely, attending the Minnesota Speech and Hearing Association Meeting on Monday, May 16, 1960, on the Minneapolis Campus: Eileen Anderson, Barbara Coughlin, Elissa Prilic, Inez Gibbs, Wayne Gustafson, Kathryn Hanula, Marianne Hoiem, Curtis Jackson, Judith Jarvinen, Richard Jentoft, John Lindgren, Craig Linnell, Nick Pappas, James Pederson, Grace Schultz, Phyllis Simon, Warner Skomars.

These students should consult with their instructors regarding work required in the classes they have missed. In accordance with the policy adopted by the Senate, Nov. 17, 1949, instructors should permit students to make up the work in the customary manner.

Chester W. Wood, Director
Office of Student
Personnel Services

after the prom . . .

STOP AT

GALLAGER'S

WE SPECIALIZE IN
FRIED CHICKEN AGED STEAKS
SEA FOODS CHOPS BAR-B-Q'd RIBS

Open Year Round

5 p.m. - 1 p.m. (Tuesday thru Friday) — 5 p.m. - 2 a.m. (Saturdays)
— CALL FOR RESERVATIONS —

3420 Miller Trunk

RA 7-9678



For Prompt,
Efficient Cleaning
and Laundry
Service . . .

Phone: RA 2-3355



**ISETTA
NEEDED
contact
MUSIC DEPT.**

NOW OPEN - - - TWO BARBERS

MOUNT ROYAL BARBER SHOP

Located In the New
MOUNT ROYAL SHOPPING CENTER
EASY WALKING DISTANCE

SUMMER WORK

Duluth and Superior area

We are hiring male college students to work through summer for full time. If qualified you will make \$1,718 plus paid college scholarship for coming year. Write, giving personal background, college major, and three personal references. Write to —

Mardigan Corp., Box 5289, Minneapolis, Minn.

Three-day Jazz Festival Being Held On Main Campus

Dave Brubeck, Louis Armstrong and Ahmad Jamal are coming to the University Main Campus for a three-day jazz festival.

The Brubeck quartet will appear at 8:30 p. m. tonight in Northrup Auditorium. On the same bill will be Miriam Makeba, a jazz-folk-song artist from the Union of South Africa, Lambert, Henricks and Ross with the Ike Issacs Trio and the Union Jazz Workshop Quintette.

Miss Makeba sang with "The Black Manhattan Brothers" in South Africa and the Belgian Congo, and later joined the musical review, "African Jazz and Variety." The trio vocally adapts Count Basie jazz.

The Ahmad Jamal Trio will perform at 8:30 p. m. May 14.

Also on the Saturday night program will be jazz vocalist Ernestine Anderson, Coleman Hawkins Quartet, and the Twin Cities' Harry Blons and his orchestra.

Louis Armstrong will appear at 2:30 p. m. May 15, with Clara Ward and the Ward Singers, and the local Rod Aaberg Band.

The festival is being sponsored by the University Department of Concerts and Lectures and the Union Board of Governors.

Season tickets can be pur-



Dave Brubeck

chased in the Union Ticket Office and in the University Artists Course Ticket Office. Tickets are \$3, \$6, \$7.50, \$9, and \$13.50. (The \$13.50 seats are in the first five rows.)

Single tickets went on sale May 2.

Tickets for the three-day jazz festival, which is similar to those at Newport, Chicago, and French Lick, will be sold at regular concert scale, \$1.50 to \$3.50 for single performances, with a special \$1.50 discount for those who want to attend all three

sessions, which then would sell for \$3.00 to \$9.00 for the whole festival.

For the real dyed-in-the-wool jazz addict, the seats in the first five rows of the center section will sell for \$5.00 per session.

LSA Meets

On Thursday evening, 7:30 p. m., May 19, the Lutheran Student Association will feature a panel discussion entitled, "Religion and the Presidency." Rev. Luther Eckman, and four students, Harry Wick, Cliff Jacobson, Rene Carlson, and Jim Buenting will take part in this discussion. The topic, a current controversial issue, should prove quite interesting to all.

This meeting, as all remaining meetings, will be held at the LSA House, 710 Woodland Ave.

"Red Hot'n Blue"

May 21

Tickets \$2.50

Education Day On May 18

On May 18th, UMD will hold its annual Education Day. It is a day on which many events of interest to B.S. majors will take place. The morning will begin with a convocation at 10:30 in Kirby Ballroom with Dr. Lester Emans of Wisconsin State College as the guest speaker.

In the afternoon at 2:30 there will be an informal panel discussion also in the ballroom, featuring area principals from Eveleth, Esko, and Duluth. The main subject of the discussion will be "Suggestions for Beginning Teachers," and should be of interest for all students planning to become teachers.

The climaxing event for the day will be the banquet starting at 6:30 in the ballroom. At this time the four electe "Outstanding Future Teachers" will be announced and Dr. Emans will speak again. The ticket cost for the banquet is two dollars, and must be bought in advance as no tickets will be sold at the door. Tickets are being sold by student education organizations and are available in Kirby until May 16.

Nominees for "Outstanding Future Teachers" are: (Secondary Education) Richard Thurston, Ralph Anderson, Richard Ferrario, Elman Johnson, Milton Hill, Wesley Cato, Judy Snyder, Marion Kukkola, Janet Brander, Diane Smith, Katherine Lundahl, and Betty Ruth Johnson; Elementary Education: John Mikolich, Marsha Birch, Robert Oberstar, and Carole Olsson.



Dr. Lester Emans

Voting will take place on Monday, May 16, in KSC from 9:00 to 3:15 and in Old Main from 3:45 to 4:30. All B.S. majors are eligible to vote.

Guidance Sessions Coming This June

Selected students from Duluth junior and senior high schools will receive counseling from enrollees at the Counseling and Guidance Institute at UMD, June 13 and July 15.

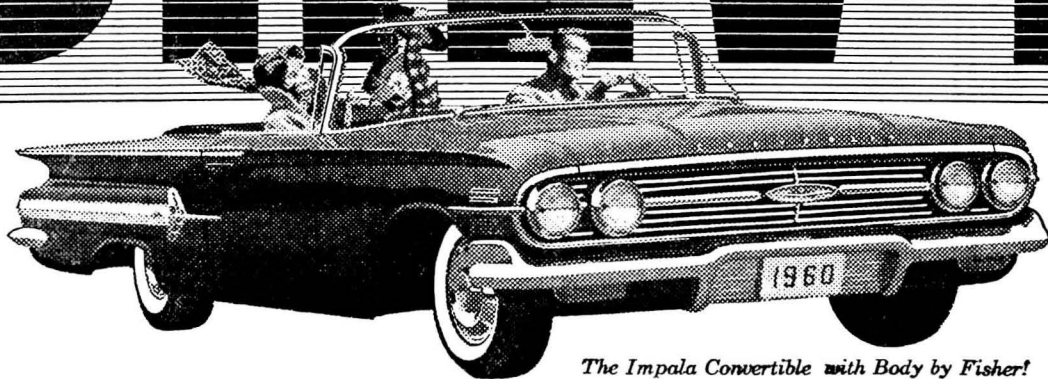
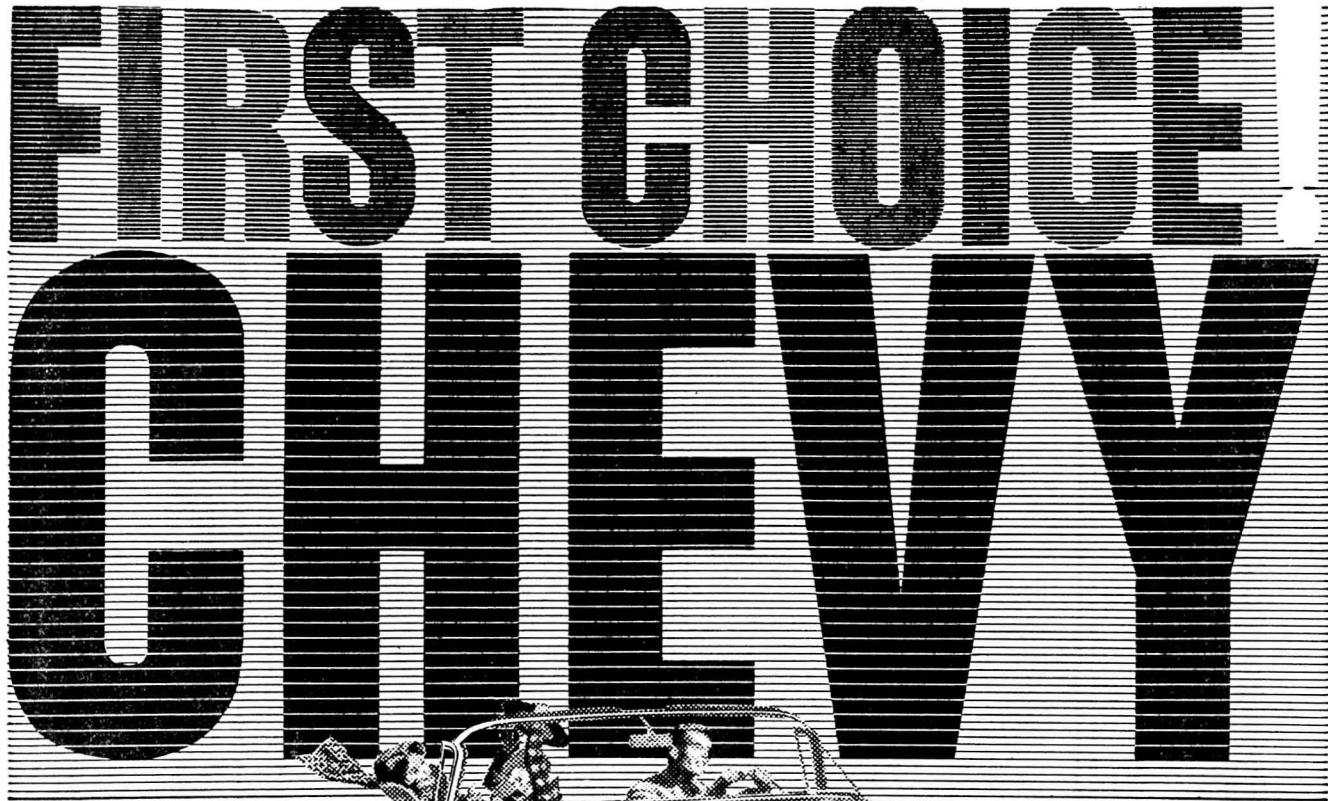
The UMD institute is for high school counselors and for teachers preparing for guidance and counseling work.

Cooperating with the UMD institute are Alvin Stolen, superintendent of schools, Duluth, and guidance service, Duluth. Stolen and Iverson, in turn, are working with junior and senior high school principals and counselors in selecting students for the interviews.

Robert S. Van Kleek, director of guidance at Central High School, Duluth, will be an instructor. Dr. Henry Borow, professor of psychological services, University of Minnesota, Minneapolis, will be a professor.

Air Conditioning—temperatures made to order—for all-weather comfort.

See The Dinah Shore Chevy Show in color Sundays, NBC-TV—the Pat Boone Chevy Showroom weekly, ABC-TV.



The Impala Convertible with Body by Fisher!

Why shouldn't you be driving America's first-choice car right now? You couldn't do better by your family—or your family budget—than to pick out one of Chevy's 18 FRESH-MINTED MODELS, load up its VACATION-SIZED TRUNK and take off on one of those springtime trips Chevy so dearly loves. Once you're

whisking along the highway, cushioned by FULL COIL SPRINGS at all four wheels, you'll have your own smooth-running account of why Chevy's '60's best seller. And right now when beautiful buys are in full bloom at your dealer's!



Save—right now—during the Spring Fever Selling Spree at your local authorized Chevrolet dealer's

VOTE
MONDAY
OR
TUESDAY

DUMAS
BEAUTY SALON

COMPLETE
BEAUTY SERVICE

201 East Superior Street
RA 2-6657

MAKI BROTHERS
KENWOOD
ROYAL
SERVICE
STATION

1601 Kenwood Avenue

OPEN —
7:00 a.m. to 10:00 p.m.
DAILY.

Preliminary Duluth Campus Class Schedule, 1960-61

THIS SCHEDULE IS PRINTED EARLY so that students in attendance during the spring quarter of 1960 may plan their 1960-61 program, and especially their fall, 1960, class schedule with their advisors during the week of May 16-20. Those students needing complete course titles will find them in the 1958-60 Duluth Campus Bulletin. Curriculum changes are listed in the Official Notice in the April 29, 1960 issue of the STATESMAN. A complete Class Schedule will be published during the summer and will be available to all students after September 15, 1960.

All students now in attendance should obtain their advisement materials from Room 130, Kirby Student Center, and return them by 4 p.m., May 27. These materials will not be available after Wednesday, May 18. This will give students who have completed their pre-advisement this spring a first choice in selecting courses and sections over others who wait until next fall to begin their advisement. Complete instructions and any necessary changes in schedules will be distributed with the advisement materials. The college reserves the right to modify this schedule when necessary.

NOTE: All classes meet for 50-minute periods following the hour shown unless a closing time for the class period is given. An asterisk (*) preceding the course number indicates courses approved for general education. Please keep this schedule until fall registration. See explanation of abbreviated winter and spring quarter listings at beginning of winter schedule.

Fall - 1960

Course	Title	Sec.	Cr.	Hours	Days	Room
AIR SCIENCE (Air)						
11	Leadership Lab I (1 cr upon completion of both 11 and 12)	1		8:30	T	Field
21	Aerospace Power II	2	1	2:30	T	Field
21		1	1	9:30	MW	ROTC
21		2	1	10:30	TTh	ROTC
21	Leadership Lab II	3	1	1:30	TTh	ROTC
61	AF Officer Dev III Leadership Lab III	1		8:30	T	Field
61		2		2:30	T	Field
61		3		9:30	MTWTh	ROTC
71	Weather, Navigation Leadership Lab IV	1		8:30	T	Field
71		2		2:30	T	Field
ART						
Humanities						
*4	Art Today	1	3	8:30	MWF	H314
*4		2	3	11:30	MWF	H314
*4		3	3	2:30	MWF	H314
*5	Intro to Art	1	3	8:30-10:20	MWF	H326
*5		2	3	10:30-12:20	MWF	H326
*5		3	3	2:30-4:20	MWF	H326
*10.11	Drawing	1	3	12:30-2:20	MWF	H318
20,21	Design	1	3	8:30-10:20	TTh	H326
23	Lettering, Color	2	2	12:30-2:20	TTh	H326
40,41,42	Figure Drawing	1	3	2:30-4:20	TTh	H318
50,51,52	Crafts	1	3	11:30-2:20	TTh	H331
55	Role of Art in Educ	3	2	2:30-3:45	TTh	H308
60,61,62	Painting	1	3	2:30-4:20	MWF	H318
70,71,72	Print Processes	1	3	9:30-11:20	TTh	H337
91	Probs: Print Proc	5	3	9:30-11:20	TTh	H337
92	Probs: Art Educ	5	3	ar		
93	Probs: Gallery Pract	5	3	ar		
96	Probs: Draw, Paint	5	3	2:30-4:20	MWF	H318
99	Probs: Design, Crafts	5	3	11:30-2:20	TTh	H331
110	Probs: Crafts	3	3	11:30-2:20	TTh	H331
150	Probs: Painting	3	3	2:30-4:20	MWF	H318
ArtEd 295	Probs: Art Educ	ar	ar			
Arth 45	Cont Arch, Paint, Sculp I	3	3	12:30	MWF	H314
Arth 60	Medieval Art	3	3	1:30	MWF	H314
†Art 10, 11, 50, 51, 52, 60, 61, 62 are 3 cr courses. †Art 20, 21, 40, 41, 42, 70, 71, 72 are 2 cr courses. ‡Art 91, 92, 93, 96, and 99 may be taken for 2-6 cr.						
BIOLOGY						
Science and Mathematics						
*Biol 1	Gen Biology Lect	1	5	12:30	MWF	S200
	Gen Biology Lab	2		1:30-3:20	MW	S224
		3		3:30-5:20	MW	S224
		4		8:30-10:20	TTh	S224
		5		10:30-12:20	TTh	S224
*Biol 2	Gen Biology Lect	1	5	9:30	MWF	S200
	Gen Biology Lab	2		1:30-3:20	MW	S206
		3		3:30-5:20	MW	S206
		4		8:30-10:20	TTh	S206
		5		10:30-12:20	TTh	S206
Biol 60	Microtechnique	3	3	12:30	MWF	S208
				(plus 3 hrs)		
Biol 70	Prin of Genetics	3	3	9:30	MWF	S251
Biol 98	Seminar	ar	ar	12:30	T	SA102
Biol 99	Probs	1	ar			
Bot 4	Dendrology	4	4	1:30-4:20	TTh	S232
Bot 50	Plant Ecology	3	3	1:30-4:20	MW	S212
Bot 54	Morph of Non-Vasc Plants	3	3	8:30-11:20	TTh	S212
Zool 3	Human Anatomy Lect	4	4	9:30	TTh	S200
	Human Anatomy Lab	1		8:30-10:20	MW	S238
		2		10:30-12:20	MW	S238
		3		1:30-3:20	MW	S238
		4		10:30-12:20	TTh	S238
		5		1:30-3:20	TTh	S238
Zool 50	Comp Anat of Invert Lect	5	5	12:30	MWF	S251
	Comp Anat of Invert Lab	1		1:30-4:20	TTh	S246
Zool 60	Intro Entomology	3	3	8:30-11:20	MW	S246
Zool 63	Ornithology	3	3	8:30-11:20	TTh	S246
BUSINESS AND ECONOMICS (BE)						
Social Sciences						
*1	Prin of Econ	1	5	8:30	MTWThF	SS116
*1		2	5	9:30	MTWThF	SS116
*1		3	5	10:30	MTWThF	SS116
*1		4	5	11:30	MTWThF	SS116
*1		5	5	1:30	MTWThF	SS116
*1		6	5	2:30	MTWThF	SS116
*1		7	5	3:30	MTWThF	SS116
11	Typewriting	1	3	8:30	MWF	SS214
14	Elem Shorthand	3	3	9:30	MTWThF	SS214
17	Adv Shorthand	3	3	1:30	MWF	SS214
31	Prin of Accounting	1	3	8:30	MWF	SS208
31		2	3	9:30	MWF	SS208
31		3	3	10:30	MWF	SS208
31		4	3	1:30	MWF	SS208
41	Elem of Statistics	1	2	8:30	TTh	SS202
41		2	2	9:30	TTh	SS202
41		3	2	10:30	TTh	SS202
50	Management	3	3	10:30	MWF	SS116
51	Contract Law	1	3	8:30	MWF	SS202
51		2	3	8-9:20	TTh	SS18
60	Transportation	3	3	1:30	MWF	SS202
71	Intern Accounting I	3	3	10:30-12:20	TTh	SS208
74	Cost Accounting	3	3	11:30	MWF	SS208
77	Income Tax Accounting	4	4	8:30-10:20	TTh	SS208
81	Labor Economics	3	3	2:30	MWF	SS202
91	Hist of Econ Thought	3	3	8:30	MWF	SS116
94	Econ Analysis: The Firm	1	3	9:30	MWF	SS202
94		2	3	10:30	MWF	SS202
Econ 105A	Intern Accounting I	3	3	10:30-12:20	TTh	SS208
Econ 165	Econ Analysis: The Firm	3	3	9:30	MWF	SS202
Note: Students in BE31 and 41 are required to leave 11:30 to 12:20 Tuesday free for exams. All B & E majors are requested to leave 12:30 to 1:20 Tuesday free for departmental convocations.						
CHEMISTRY (Chem)						
Science and Mathematics						
1	Gen Chem Lect-Nurses	4		11:30	MW	SA320
	Gen Chem Lab-Nurses	1		8:30	TTh	SA320
		2		8:30-11:20	M	S301
		3		8:30-11:20	W	S301
		4		10:30	T	S301
		5		10:30-12:20	Th	S301
*2	Intro Chem Lect-Rec	4	4	1:30-4:20	F	S301
	Intro Chem Lab	1		1:30	MTThF	S347
		2		8:30-10:20	T	S320
		1		10:30-12:20	T	S320
*3	Gen Chem Lect-Rec	5	5	1:30	MTWThF	S150
	Gen Chem Lab	1		10:30-12:20	MW	S320
		2		2:30-4:20	MW	S320
		3		2:30-4:20	TTh	S320
*6	Gen Chem Lect-Rec	1	5	1:30	MTWThF	S200
*6		2	5	8:30	MTWThF	S200

Course	Title	Sec.	Cr.	Hours	Days	Room
EDUCATION (Ed)						
Education and Psychology						
48	Orientation to Tchg	1	1	8:00	MW	M201
48		2	1	9:00	TTh	M201
48		3	1	10:00	TTh	M201
48		4	1	11:00	TTh	M201
48		5	1	2:00	MW	M201
48		6	1	2:00	TTh	M201
51A	Group Leadership	1	1	1/2 ar		
51B	Group Leadership	1	1	1/2 ar		
51C	Group Leadership	1	1	1/2 ar		
61A-81A	School, Society	1	4	8:00	MTThF	M307
61A-81A		2	4	11:00	MTThF	M209
61A-81A		3	4	1:00	MTThF	M109
61A-81A		4	4	2:00	MTThF	M109
61B-81B	Educ Psych	4	4	8:00	MTThF	M308
61C	Curric, Meth in Elem Educ	5	1	1:00	MWF	M209
(Also 1 hr obs daily-pref 9 am)						
81C	Curric, Meth in Sec Educ	5	3	8:00	MTWThF	M109
90	Probs of Tchg Profession	1	3	8:00	MWF	M209
90		2	3	4:30-5:45	MW	M201
(Sec. 2 open only to those concurrently doing student tchg)						
EdAd 167	Junior High School	3	3	4:30-5:45	MW	M109
EdCI 55	Nursery Sch, Kdg Curric	3	3	12:00	MWF	M209
EdCI 60	Tchg Rdg, Elem Schools	3	3	2:00	MWF	M209
EdCI 84	Meth of Tchg Basic Bus	1	4	4:00	M	SS214
EdCI 81	Meth of Tchg Typewrit	1	4	4:00	W	SS214
EdCI 87	Tchg Math, Sec Schools	3	2	3:15	TTh	SA314
EdCI 89	Tchg Social Stud, Sec Sch	3	3	3:00	MWF	M201
EdCI 102	Tchg Soc Stud, Elem Sch	3	3	4:30-5:45	MW	M209
EdCI 105	Audio-Vis Mat in Educ	3	3	4:30-5:45	TTh	PE170
EdCI 149	Tchg, Superv of Math in Elem Sch	3	3	4:30-5:45	TTh	M209
EdCI 271	Probs: Curric Const	ar	ar			
EPsy 116	Stat Meth in Educ	3	3	4:30-5:45	TTh	M310
EPsy 133	Basic Proc in Student Pers Work	3	3	4:30-5:45	MW	M310
EdT 54A	Dir Tchg: Elem Sch	1	ar			
EdT 54B	Dir Tchg: Elem Sch	1	ar			
EdT 77B	Dir Tchg: Kdg, Prim	1	ar			
EdT 77C	Dir Tchg: Kdg, Prim	1	ar			
EdT 82A	Dir Tchg: Sec Sch	5	†			ar
EdT 82B	Dir Tchg: Sec Sch	5	†			ar
EdT 82C	Dir Tchg: Sec Sch	5	†			ar
ArtEd 295	Probs: Art Educ	ar	ar			
Eng 90	Tchg of Language Arts					(See English)
HE 88	Home Econ Meth					(See Home Economics)
Ind 70	Tchg Ind Subjs					(See Industrial Education)
Mu 62	Music in Sec Schs					(See Music)
PE 52	Tchg of PE, Elem Sch					(See PE for Men and Women)
PE 54	Meth, Mat in PE					(See PE for Men and Women)
PEM 55	Tchg of PE Activities					(See PE for Men)
Spch 90	Probs: Speech Educ					(See Speech)
†EdT 54A, 54B, 77B and 77C are 6-7 cr courses. †EdT 82A, 82B and 82C require a block of 4 uninterrupted hrs.						
ENGINEERING						
Science and Mathematics						
Draw 14	Engin Graphics Lect	1	3	11:30	TTh	S200
	Engin Graphics Lab	2		1:30-3:20	WF	SA330
		3		1:30-3:20	WF	SA330
		3		1:30-3:20	TTh	SA330
ENGLISH (Eng)						
Humanities						
X	Elem Writing, Reading	1	0	8:30	MWF	SS18
X		2	0	9:30	MWF	SS18
X		3	0	10:30	MWF	SA210
X		4	0	11:30	MWF	SA206
X		5	0	12:30	MWF	SS18
X		6	0	1:30	MWF	SS224
X		7	0	2:30	MWF	SS16
X		8	0	3:30	MWF	SA202
*1A	Freshman English	4	4	10:30	MTThF	SA206
*1B	Freshman English	1	4	8:30	MTThF	SS102
*1B		2	4	8:30	MTThF	

Fall - 1960

Course	Title	Sec.	Cr. Hours	Days	Room
GEOLOGY (Geol)					
Science and Mathematics					
*1	Phys Geol	3	11:30	MWF	SA216
*A	Phys Geol Lab	1	2 8:30-10:20	TTh	SA114
*A		2	2 8:30-10:20	TTh	SA118
*A		3	2 11:30-1:20	TTh	SA114
*A		4	2 11:30-1:20	TTh	SA118
65	Structural Geol	3	9:30	MWF	SA210
91	Paleontology	3	2:30-5:20	TTh	SA114
95	Stratigraphy	3	2:30	MWF	SA210
99	Geologic Probs	2	ar		
HEALTH EDUCATION (HeEd)					
Education and Psychology					
*3	Personal Health	1	2 11:30	MW	PE136
*3		2	2 8:30	TTh	PE136
*3		3	2 9:30	TTh	PE136
*3		4	2 11:30	TTh	PE136
*3		5	2 2:30	TTh	PE136
51	Personal, Commun Health	3	1:30	MWF	PE170
HISTORY (Hist)					
Social Sciences					
*1	Civ of Modern World	3	11:30	MWF	SS12
4	English History	3	1:30	MWF	SS12
11	Ancient, Medieval Civ	3	9:30	MWF	SS12
*20	Amer Hist (Col, Rev)	1	3 8:30	MWF	SS110
*20		2	3 1:30	MWF	SS110
*21	Amer Hist to 1848	1	3 10:30	MWF	SS110
*21		2	3 11:30	MWF	SS110
*21		3	3 1:30-2:45	TTh	SS110
*22	Am Hist (late 19th Cent)	1	3 8:30-9:45	TTh	SS110
*22		2	3 2:30-3:45	TTh	SS106
64	20th Cent Europe	3	12:30	MWF	SS110
70	English Constit Hist	3	10:30-11:45	TTh	SS224
83	Am Econ, Social Hist	3	10:30	MWF	SS224
103A	Renaissance, Ref	3	1:30-2:45	TTh	SS328
131	Minn and the NW	3	9:30	MWF	SS224
141D	Amer Diplomatic Hist	3	8:30	MWF	SS224
HOME ECONOMICS (HE)					
Education and Psychology					
*2	Sel, Care of Clothing	2	9:00	TTh	M308
*18	Pers, Family Living	2	10:00	TTh	M308
29	Textiles	3	10-11:50	TTh	M313
*31	Introd to Nutrition	3	1:00	MWTh	M308
*41	Introd to Foods	3	1-3:50	T	M311
			2-3:50	Th	M311
43	Food Preparation II	4	8-10:50	MW	M311
			8:00	F	M311
52	Tailoring	3	2-3:50	MWF	M313
83	Home Mgt	3	ar	ar	HMH
84	Home Mgt House Res	3	ar	ar	HMH
88	Home Econ Meth	3	11:00	MTTh	M308
90	Spec Probs in Demonst	3	2:00	MWF	M311
HUMANITIES (Hum)					
Humanities					
*31	American Life I	3	1:30	MWF	H150
*41	Survey of the Arts	1	2 9:30	MWF	H314
*41		2	2 10:30	MWF	H314
INDUSTRIAL EDUCATION (Ind)					
Education and Psychology					
*1	Basic Woodwork	3	8-9:50	MWF	LS1
2	Machine Woodwork	5	2-3:50	MTWThF	LS1
3	Woodfinishing	2	8-9:50	TTh	LS1
*5	Basic Drawing	3	10-11:50	MWF	M115
10	Basic Electricity	1	3 1-3:00	MWF	M15
10		2	3 4-6:00	MWF	M15
18	Machine Shop Practice	2	4-5:50	TTh	W. Jr.
31	Electricity II	3	10-11:50	MWF	M15
40	Analysis	2	4-6:00	M	M115
42	Course Organization	2	12:00	TTh	M15
62	Phil, Pract of Voc Ed	3	12:00	MWF	M15
70	Tchg Ind Subjects	3	1:00	MWF	M115
LANGUAGES					
Humanities					
*Fr 1	Bgn French	1	3 9:30	MWF	L130
*Fr 1		2	3 1:30	MWF	SS102
Fr 4	Interm French	3	12:30	MWF	SS106
Fr 53	Adv Comp, Conversation	3	11:30-12:45	TTh	L130
Fr 76	Classical Literature	3	1-2:15	TTh	L130
*Ger 1	Bgn German	1	3 8:30	MWF	L130
*Ger 1		2	3 1:30	MWF	L130
Ger 4	Interm German	3	12:30	MWF	L130
Ger 7	Elem Comp, Conversation	2	10:30	TTh	L130
Ger 70	Survey of German Lit	3	9-10:15	TTh	L130
*Span 1	Bgn Spanish	3	11:30	MWF	L130
*Swed 7	Bgn Swedish	3	10:30	MWF	L130
MATHEMATICS (Math)					
Science and Mathematics					
*1	Higher Algebra	1	5 11:30	MTWThF	SA306
*1		2	5 12:30	MTWThF	SA302
*1		3	5 1:30	MTWThF	SA306
*1		4	5 1:30	MTWThF	SA302
*5	Modern Basic Math	1	5 9:30	MTWThF	SA302
*11	Col Alg, Trig I (Lect)	1	2 5 11:30	MWF	S200
*11		2	5 2:30	MWF	S200
			8:30	MW	SA302
			8:30	TTh	SA302
			9:30	TTh	SA306
			10:30	MW	SA302
			10:30	TTh	SA302
			11:30	MW	SA314
			2:30	MW	SA302
	Col Alg, Trig I (Quiz)	1	2 12:30	Th	S200
		2	1 1:30	Th	SA216
49	Anal Geom, Calc I (Lect)	5	12:30	MWF	SA306
	Anal Geom, Calc I (Rec)	1	2 12:30	TTh	SA306
	Anal Geom, Calc I (Quiz)	1	1 1:30	Th	SA216
	Anal Geom, Calc II	1	5 9:30	MTWThF	SA314
50		2	5 10:30	MTWThF	SA314
53	Finite Analysis I	5	8:30	MTWThF	SA306
62	Introd to Modern Alg	3	8:30	MWF	SA314
84	Introd to Complex Var	3	2:30	MWF	SA306
89	Int to Math Probability	3	1:30	MWF	SA314
99	Sel Topics (1-2 cr) (perm of instr req)		ar		
MUSIC (Mu)					
Humanities					
1	Basic Music Theory	1	4 10:30	MTWThF	H170
1		2	4 11:30	MTWThF	H170
7	Adv Music Theory	3	9:30	MWF	H170
11	Recital Attendance	0	ar		
11	Voice	1	ar		
12A	Appl Vocal Tech	1	9:30	TTh	H170
13	Piano	1	ar		
14A	Class Piano	1	9:30	TTh	H236
15	Strings	1	ar		
16A	Appl String Tech	1	2:30	TTh	H242
17	Woodwinds	1	ar		
18A	Appl Woodwind Tech	1	2:30	TTh	H170
19	Brass	1	ar		
20A	Appl Brass, Perc Tech	1	1:30	TTh	H248
*21	Intro to Music	1	3 8-9:15	TTh	H222
*21		2	3 11-12:15	TTh	H222
33	Percussion	1	ar		
*40	Organ	2	ar		
*41	Orchestra	1	3:30-5:10	MW	H102
*42	Band	1	7:40-9:20	TTh	H102
43	Chorus	1	3:30-5:10	TTh	H102
46	String Chamber Music	1/2	ar		
47	Wind Chamber Music	1/2	ar		
48	Brass Chamber Music	1/2	ar		
49	Vocal Chamber Music	1/2	12:30	TTh	H102
50	Adv Voice	1	ar		
51	Adv Piano	1	ar		
52	Adv Strings	1	ar		
53	Adv Woodwinds	1	ar		
54	Adv Brass	1	3:30-5:10	MW	H102
55	Adv Orchestra	1	7:40-9:20	TTh	H102
56	Adv Band	1	3:30-5:10	TTh	H102
57	Adv Chorus	1	3:30-5:10	TTh	H102
61	Music in Elem School	3	1:30	MWF	H170
64	History of Music	3	8:30	MWF	H170
67	Opera Workshop	1	12:30	MWF	H170
78	Inst, Orchestration	2	1:30	TTh	H170
141	Orchestration	2	1:30	TTh	H170
204	Grad Applied Music	2	ar		
†May be taken for 1-0 cr.					
‡May be taken for 1-2 cr.					
NATURAL SCIENCE (NSci)					
Science and Mathematics					
*1A	Living World	2	10:30	TTh	S200
*2A	Fundamentals of Math	3	10:30	MWF	S200
PHILOSOPHY (Phil)					
Humanities					
*2	Logic	1	3 8:30	MWF	SA216
*2		2	3 1:30	MWF	SA216
50	Hist of Phil (Greek)	5	9:30	MTWThF	SS102

Course	Title	Sec.	Cr. Hours	Days	Room
PHYSICAL EDUCATION FOR MEN (PE)					
Education and Psychology					
*M1	Orientation to PE	1	1 9:30	MWF	PE100
*M1		2	1 10:30	MWF	PE100
*M1		3	1 11:30	MWF	PE100
*M1		4	1 12:30	MWF	PE100
*M1		5	1 1:30	MWF	PE100
*M1		6	1 2:30	MWF	PE100
*M1		7	1 9:30	TTh	PE100
*M1		8	1 10:30	TTh	PE100
*M1		9	1 11:30	TTh	PE100
*M1		10	1 12:30	TTh	PE100
*M1		11	1 1:30	TTh	PE100
M4D	Football to Nov 4 (Meets Mondays 2nd 6 wks)	1	8-9:20	TWTh	PE100
M5D	PE Act's—Bgn Nov 7 Intramural to Nov 4 (Meets Fridays 2nd 6 wks)	2	8-9:20	TThF	PE100
*M14	Soccer	1	8-9:20	TThF	PE100
*M16C	Volleyball	2	1 11:30	MWF	PE155
*M16C		3	1 1:30	MWF	PE155
*M16C		5	1 12:30	TTh	PE155
*M16C		6	1 3:30-4:50	TTh	PE155
*M20	Touch Football to Nov 4	1	2:30	MTWThF	Field
*M21A	Bgn Swimming	1	1 9:30	MW	PE50
*M21A		2	1 10:30	MW	PE50
*M21B	Interm Swimming	1	1 1:30	TTh	PE50
*M21B		2	1 2:30	TTh	PE50
M55	Tchg PE Activities	2	12:30	TTh	PE155
M60	Prev, Care of Injuries	2	10:30	TTh	PE155
M66A	Officiating Fall Sports	1	1:30	MW	PE165
M67	Coaching Football	2	11:30	TTh	PE165
†Students taking these classes must allow a full 60 minutes to include showering following the class period.					
PHYSICAL EDUCATION FOR MEN AND WOMEN (PE)					
Education and Psychology					
*2	Archery	1	1 10:30	TTh	PE10
*2		2	1 11:30	TTh	PE10
*2		3	1 1:30	TTh	PE10
*2		4	1 3:30-4:40	TTh	PE10
*3	Badminton	1	1 11:30	MWF	PE150
*3		2	1 5-6:20	MW	PE150
*4	Golf to Nov 4	1	9:30	MWF	PE155
*8	Tennis to Nov 4	1	12:30	MTWThF	Cts
*9	Bowling	1	1 3-5:00	W	PE165
*9		2	1 3-5:00	F	PE165
*M16C	Volleyball (open to women)	1	1 10:30	MWF	PE155
*M16C	Diving	4	1 3-4:50	MW	PE155
*22		1	3:30-4:30	TTh	PE50
*23	Synchronized Swimming	1	1:30	TTh	PE50
*24	Life Saving	1	3:30	MW	PE50
30	Elem, Lead-up Games	1	9:30	MWF	PE150
31	Body Mech, Stunts, Tumb	1	12:30	MWF	PE150
32	Rhythms for Elem Grades	1	3:30	MWF	PE150
*41	Ballroom Dance	1	12:30	MWF	PE145
*42A	Folk Dance	1	11:30	MWF	PE145
*43A	Modern Dance	1	2:30	MWF	PE145
*44	Square Dance	1	8:30	MWF	PE145
52	Tchg PE in Elem Sch	2	9:30	TTh	PE170
54	Meth, Mat in PE	4	8:30	MTWTh	PE170
101	Prin of PE	3	12:30	MWF	PE165
†Requires that students be available from 8:30-10:20.					
PHYSICAL EDUCATION FOR WOMEN (PE)					
Education and Psychology					
*W14	Soccer to Nov 4	1	2:30	MTWThF	Field
*W21A	Bgn Swimming	1			

Preliminary Duluth Campus Class Schedule, 1960-61

Winter, 1961

Winter and Spring Quarter Schedule Explanation

In the interest of economy the winter and spring quarter schedules are listed in abbreviated form. Credits are shown in parentheses after the course title, or, if the title is too long, after the "days" item for the first, or only, section of the course offering. No room assignments are designated. All courses will be given on the upper campus unless designated for Main or L. S. on the lower campus. Note that laboratory and recitation sections are listed under the lecture sections in certain courses. The 1958-60 UMD Bulletin and curriculum changes given in the April 29, 1960, STATESMAN Official Notices should be consulted for prerequisites and complete course descriptions.

Sample translation of Biology 1: Asterisk indicates the course may be used to meet a general education requirement. Title—General Biology. 5 credits. Lectures given only at 9:30-10:20 on Monday, Wednesday and Friday. General Biology Lab sections required for this course are as follows: Section one meets from 1:30-3:20 on Mondays and Wednesdays; section two meets from 3:30-5:20 on Mondays and Wednesdays, etc. The classes are all held on the upper campus.

The footnote following courses in the section on Physical Education for Men and Women also applies to the section on Physical Education for Men. Other footnotes should be observed carefully.

The college reserves the right to modify this schedule when necessary.

Winter, 1961

AIR SCIENCE (Air)

- 12 Leadership Lab I (1 cr upon completion of both 11 and 12)
 - 1, 8:30, T
 - 2, 2:30, T
- 22 Aerospace Power II (1)
 - 1, 9:30, MW
 - 2, 10:30, TTh
 - 3, 1:30, TTh
- Leadership Lab II (0)
 - 1, 8:30, T
 - 2, 2:30, T
- 62 AF Officer Dev III (3)
 - 9:30, MTWTh
 - Leadership Lab III (0)
 - 1, 8:30, T
 - 2, 2:30, T
- 72 Leadership Lab IV (0)
 - 1, 8:30, T
 - 2, 2:30, T

ART

- *4 Art Today (3)
 - 1, 8:30, MWF
 - 2, 11:30, MWF
 - 3, 2:30, MWF
- *5 Introd to Art (3)
 - 1, 8:30-10:20, MWF
 - 2, 10:20-12:20, MWF
 - 3, 2:30-4:20, MWF
- *10,11 Drawing (3 cr each)
 - 1, 10:30-12:20, MWF
 - 2, 12:30-2:20, MWF
- 20,21 Design (2 cr each)
 - 1, 8:30-10:20, TTh
 - 2, 2:30-4:20, TTh
- 30,31,32 Ceramics (3 cr each)
 - 1, 9:30-12:20, TTh
 - 2, 2:30-5:20, TTh
- 50,51,52 Crafts (3 cr each)
 - 11:30-2:20, TTh
- 56 Art in Elem Educ (3)
 - 2:30-3:45, TTh
- 60,61,62 Painting (3 cr each)
 - 2:30-4:20, MWF
- 70,71,72 Print Proc (2 cr each)
 - 9:30-11:20, TTh
- 80,81,82 Sculpture (3 cr each)
 - 9:30-11:20, MWF
- 91 Probs: Print Proc (2-6)
 - 9:30-11:20, TTh
- 92 Probs: Art Educ (2-6)
 - Hrs ar
- 93 Probs: Gallery Practice
 - Hrs ar (2-6)
- 96 Probs: Drawing, Painting
 - 2:30-4:20, MWF (2-6)
- 97 Probs: Sculpture (2-6)
 - 9:30-11:20, MWF
- 98 Probs: Ceramics (2-6)
 - 1, 9:30-12:20, TTh
 - 2, 2:30-5:20, TTh
- 99 Probs: Design, Crafts
 - 11:30-2:20, TTh (2-6)
- 110 Probs: Crafts (3)
 - 11:30-2:20, TTh
- 150 Probs: Painting (3)
 - 2:30-4:20, MWF
- 170 Probs: Ceramics (3)
 - 1, 9:30-12:20, TTh
 - 2, 2:30-5:20, TTh
- 180 Probs: Sculpture (3)
 - 9:30-11:20, MWF
- ArtEd 295 Probs: Art Educ (ar)
 - Hrs ar
- Arth 65 Renaissance Art (3)
 - 1:30, MWF

BIOLOGY

- Bact 1 Elem of Bact Lect (4)
 - 10:30, TTh
 - Elem of Bact Lab
 - 1, 10:30-12:20, MW
 - 2, 2:30-4:20, MW
 - 3, 1:30-3:20, TTh
- *Biol 1 Gen Biol Lect (5)
 - 9:30, MWF
 - Gen Biol Lab
 - 1, 1:30-3:20, MW
 - 2, 3:30-5:20, MW
 - 3, 8:30-10:20, TTh
 - 4, 10:30-12:20, TTh
 - 5, 1:30-3:20, TTh
- *Biol 2 Gen Biol Lect (5)
 - 12:30, MWF
 - Gen Biol Lab
 - 1, 1:30-3:20, MW
 - 2, 3:30-5:20, MW
 - 3, 8:30-10:20, TTh
 - 4, 10:30-12:20, TTh
 - 5, 1:30-3:20, TTh
- Biol 98 Seminar (ar)
 - 12:30, T
- Biol 99 Probs (1)
 - Hrs ar
- Bot 51 Plant Physiology (3)
 - 8:30-11:20, TTh
- Bot 55 Morph of Vasc Plants (3)
 - 1:30-4:20, TTh
- Zool 4 Human Physiology Lect (4)
 - 9:30, TTh
 - Human Physiology Lab
 - 1, 10:30-12:20, MW
 - 2, 2:30-4:20, MW
 - 3, 10:30-12:20, TTh
 - 4, 1:30-3:20, TTh
 - 5, 3:30-5:20, TTh
- Zool 51 Comp Anat of Vert Lect
 - 1:30, MWF (5)
 - Comp Anat of Vert Lab
 - 1, 2:30-5:20, MW
 - 2, 1:30-4:20, TTh
- Zool 53 Vert Embryology Lect (5)
 - 12:30, MWF
 - Vert Embryology Lab
 - 1:30-3:20, MWF
- Zool 61 Econ Entomology (3)
 - 8:30-11:20, TTh

BUSINESS AND ECONOMICS (BE)

- *2 Prin of Econ (5)
 - 1, 8:30, MTWThF
 - 2, 9:30, MTWThF
 - 3, 10:30, MTWThF
 - 4, 11:30, MTWThF
 - 5, 1:30, MTWThF
 - 6, 2:30, MTWThF
 - 7, 3:30, MTWThF
- 12 Typewriting (1)
 - 8:30, MWF
- 15 Elem Shorthand (3)
 - 9:30, MTWThF
- 18 Sec Procedures (3)
 - 1:30, MWF
- 32 Prin of Accounting (3)
 - 1, 8:30, MWF
 - 2, 9:30, MWF
 - 3, 10:30, MWF
 - 4, 1:30, MWF
- 42 Elem of Statistics (2)
 - 1, 8:30, TTh
 - 2, 9:30, TTh
 - 3, 10:30, TTh

- 52 Business Org, Prop Law (3)
 - 1, 8:30, MWF
 - 2, 8:30-10:20, TTh
- 54 Marketing (3)
 - 10:30-12:20, MWF
- 58 Int'l Trade (3)
 - 1:30, MWF
- 72 Interm Accounting II (3)
 - 10:30-12:20, TTh
- 75 Cost Accounting (3)
 - 11:30, MWF
- 82 Social Labor Legis (3)
 - 2:30, MWF
- 92 Hist of Econ Thought (3)
 - 8:30, MWF
- 95 Econ Anal: Nat'l Income
 - 1, 9:30, MWF (3)
 - 2, 10:30, MWF
- 99 Honors, Practice (1-3)
 - 8:30-10:20, TTh
- 105B Interm Accounting II (3)
 - 10:30-12:20, TTh
- Econ 166 Econ Anal: Nat'l Income
 - 9:30, MWF (3)

Note: Students in BE 32 and 42 are required to leave 11:30 to 12:20 Tuesday free for exams. All B & E majors are requested to leave 12:30 to 1:20 Tuesday free for departmental convocations.

CHEMISTRY (Chem)

- *4 Gen Chem Lect-Rec (5)
 - 1:30, MTWThF
 - Gen Chem Lab
 - 1, 10:30-12:20, MW
 - 2, 2:30-4:20, MW
 - 3, 2:30-4:20, TTh
- *6 Gen Chem Lect-Rec (5)
 - 10:30, MTWThF
 - (Note: Prereq Chem placement test or cons of instr)
 - Gen Chem Lab
 - 1, 2:30-4:20, MW
 - 2, 8:30-10:20, TTh
 - 3, 2:30-4:20, TTh
- *7 Gen Chem Lect-Rec (5)
 - 1, 1:30, MTWThF
 - 2, 8:30, MTWThF
 - Gen Chem Lab
 - 1, 10:30-12:20, MW
 - 2, 12:30-2:30, MW
 - 3, 2:30-4:20, MW
 - 4, 8:30-10:20, TTh
 - 5, 10:30-12:20, TTh
 - 6, 12:30-2:20, TTh
 - 7, 2:30-4:20, TTh
- 51 Quant Anal Lect (4)
 - 1:30, MW
 - Quant Anal Lab
 - 2:30-5:20, MW
- 58 Org Chem Lect-Quiz (3)
 - 11:30, MTWF
- 58A Org Chem Lab (1)
 - 1:30-5:20, Th
- 61 Org Chem Lect-Quiz (3)
 - 11:30, MTWF
- 61A Org Chem Lab (2)
 - 1:30-4:50, MW
- 85 Phys Chem Lect (3)
 - 11:30, TTh
 - Phys Chem Lab
 - 2:30-5:20, W
- 98 Chem Seminar (0)
 - 2:30, F
- 99 Sr Research: Lab, Conf
 - Hrs ar (1)
- 111 Adv Org Chem (2)
 - 9:30, MT
- 112 Adv Org Chem (2)
 - 9:30, WF
- 131 Adv Inorg Chem (3)
 - 10:30, MWF
- 141 Phys Chem Lect (3)
 - 8:30, MWF
- 143 Phys Chem Lab (2)
 - 2:30-5:20, TTh

EDUCATION (Ed)

- 48 Orientation to Tchg (1)
 - 1, 8:00, TTh, Main
 - 2, 9:00, TTh, Main
 - 3, 2:00, TTh, Main
 - 4, 2:00, MW, Main
- 51A Group Leadership (1/2)
 - Hrs ar
- 51B Group Leadership (1/2)
 - Hrs ar
- 51C Group Leadership (1)
 - Hrs ar
- 61A,81A, School, Society (4 each)
 - 1:00, MTThF, Main
- 61B,81B, Educ Psych (4 each)
 - 1, 8:00, MTThF, Main
 - 2, 1:00, MTThF, Main
 - 3, 11:30, MTThF, Main
 - 4, 3-4:10, MWF, Main
- 61C Curric, Meth in Elem Educ
 - 1:00, MWF, (5), Main
 - (also 1 hr obs daily—pref 9 am)
- 81C Curric, Meth in Sec Educ
 - 3:00, MTWThF, (5), Main
- 90 Probs of Tchg Prof (3)
 - 1, 8:00, MWF, Main
 - 2, 4:30-5:45, MW, Main
 - (Sec 2 open only to those conc doing student tchg)
- EdCI 63 Children's Lit (3)
 - 3:00, MWF, Main
- EdCI 64 Tchg Rdg, Elem Sch (3)
 - 2:00, MWF, Main
- EdCI 68 Tchg Lang Arts, Elem Sch
 - 2-3:15, TTh, (3), Main
- EdCI 88 Tchg Science, Sec Sch (3)
 - 4-5:15, TTh, LS
- EdCI 102 Tchg Soc Stud, Elem Sch
 - 4-5:15, MW, (3), Main
- EdCI 103 Tchg Science, Elem Sch
 - 4:30-5:45, TTh, (3)
- EdCI 113 High School Curric (3)
 - 4:30-5:45, MW, Main
- EdCI 119 Elem School Curric (3)
 - 9-12:00, Sat, Main
- EdCI 125 Occ Information Lab (3)
 - 4:30-5:45, TTh, Main
- EdCI 169 Student Org, Acts (3)
 - 4:15-5:30, TTh
- EdCI 271 Probs: Curric Const (ar)
 - Hrs ar
- EPsy 159 Pers Dev, Mental Hygiene
 - 4:30, MW, (3), Main

- EdT 54A Dir Tchg: Elem Sch (6-7)
 - Hrs ar
- EdT 54B Dir Tchg: Elem Sch (6-7)
 - Hrs ar
- EdT 77B Dir Tchg: Kdg, Prim (6-7)
 - Hrs ar
- EdT 77C Dir Tchg: Kdg, Prim (6-7)
 - Hrs ar
- EdT 82A Dir Tchg: Sec Sch (5)
 - Block of 4 hrs req
- EdT 82B Dir Tchg: Sec Sch (5)
 - Block of 4 hrs req
- EdT 82C Dir Tchg: Sec Sch (5)
 - Block of 4 hrs req
- Art 56 Art in Elem Educ (See Art)
- ArtEd 295 Probs: Art Educ (ar)
 - Hrs ar
- Mu 61 Music in Elem Sch (See Music)
- MuEd 51 Tchg Music, Elem Sch (3)
 - 4-5:15, TTh, LS

ENGINEERING

- Draw 15 Engrn Graphics Lect (3)
 - 11:30, TTh
 - Engrn Graphics Lab
 - 1, 11:30-1:20, WF
 - 2, 1:30-3:20, WF
- GE 70 Slide Rule (1)
 - Hrs ar

ENGLISH (Eng)

- X Elem Writing, Reading (0)
 - 3:30, MWF
- *2A Freshman English (4)
 - 10:30, MTThF
- *2B Freshman English (4)
 - 1, 8:30, MTThF
 - 2, 8:30, MTThF
 - 3, 10:30, MTThF
 - 4, 10:30, MTThF
 - 5, 2:30, MTThF
- 4 Freshman Composition (3)
 - 1, 8:30, MWF
 - 2, 10:30, MWF
 - 3, 11:30, MWF
 - 4, 1:30, MWF
 - 5, 2:30, MWF
- *5 Freshman Composition (3)
 - 3 sections each hour
 - 8:30-4:20, MWF, on Upper Campus only.
- *6 Freshman Composition (3)
 - 1, 9:30, MWF
 - 2, 11:30, MWF
 - 3, 2:30, MWF
- *22 Introd to Literature (5)
 - 1, 9:30, MTWThF
 - 2, 1:30, MTWThF
- 27 Adv Writing (3)
 - 9:30, TTh
- 28 Adv Writing (3)
 - 10:30, TTh
- *38 20th Century Lit (3)
 - 9:30, MWF
- 53 World Lit (3)
 - 11:30, MWF
- 58 Shakespeare (3)
 - 10:30, MWF
- 68 Victorian Prose, Poetry
 - 1:30, MWF, (3)
- 73 American Lit (3)
 - 1, 11:30, MWF
 - 2, 2:30, MWF
- 83 Dev of Dramatic Lit (3)
 - 3:30, MWF
- 97 Indep Reading (3)
 - Hrs ar
- 98 17th Century Lit (3)
 - 2:30, MWF
- 110 Romantic Prose, Poetry
 - 10:30, MWF (3)
- 165 Introd to Mod English (3)
 - 2:30, MWF
- Jour 14 Newspaper Reporting (3)
 - 2:30, MWF

GEOGRAPHY (Geog)

- *10 Prin of Physical Geog (3)
 - 1, 8:30, MWF
 - 2, 10:30, MWF
 - 3, 11:30-12:45, TTh
 - 4, 12:30, MWF
- *11 Prin of Cultural Geog (3)
 - 1, 9:30, MWF
 - 2, 1:30, MWF
- 51 Econ Geog (3)
 - 8:30, MWF
- 52 Econ Geog (3)
 - 9:30, MWF
- 87 Geog for Teachers (3)
 - 9:30-10:45, TTh
- 95 Probs in Pol Geog (3)
 - 10:30, MWF
- 107 Soviet Union (3)
 - 1:30, MWF
- 110 South America (3)
 - 11-12:15, TTh
- 112 Western Anglo-America (3)
 - 11:30, MWF

GEOLOGY (Geol)

- *1 Phys Geol (3)
 - 12:30, MWF
- *A Phys Geol Lab (2)
 - 1, 8:30-10:20, TTh
 - 2, 10:30-12:20, TTh
 - 3, 12:30-2:20, TTh
 - 4, 2:30-4:20, TTh
- *2 Hist Geol (3)
 - 11:30, MWF
- *B Hist Geol Lab (2)
 - 1, 8:30-10:20, TTh
 - 2, 10:30-12:20, TTh
 - 3, 12:30-2:20, TTh
- 24 Mineralogy Lect (5)
 - 11:30, MWF
 - Mineralogy Lab
 - 1:30-3:20, TTh
 - Mineralogy Rec
 - 1:30, F
- 92 Paleontology (3)
 - 2:30-5:20, TTh
- 97 Optical Mineralogy Lect
 - 2:30, MW (4)
 - Optical Mineralogy Lab
 - 3:30-5:20, MW
- 99 Geologic Probs (2)
 - Hrs ar

Preliminary Duluth Campus Class Schedule, 1960-61

Winter, 1961

Winter, 1961

HEALTH EDUCATION (HeEd)

- 2 Health Care of Family (2)
2:30-4:20, TTh
- *3 Personal Health (2)
—1, 11:30, MW
—2, 9:30, TTh
—3, 11:30, TTh
—4, 2:30, TTh
- 5 First Aid, Safety (1)
9:30, TTh
- 80 Prep of Health Educ (3)
4:30-5:50, TTh
- 83 Meth. Mat in Sch Health Educ (3)
4:30-5:50, MW

HISTORY (Hist)

- *2 Civ of Mod World (3)
11:30, MWF
- 5 English History (3)
1:30, MWF
- 12 Ancient, Medieval Civ (3)
9:30, MWF
- *21 Amer Hist to 1848 (3)
—1, 8:30, MWF
—2, 1:30, MWF
- *22 Amer Hist (late 19th Cent) (3)
—1, 10:30, MWF
—2, 11:30, MWF
—3, 1:30-2:45, TTh
- *23 Amer Hist (20th Cent) (3)
—1, 8:30-9:45, TTh
—2, 2:30-3:45, TTh
- 65 20th Cent Europe (3)
12:30, MWF
- 71 English Constit Hist (3)
10:30-11:45, TTh
- 84 American Econ, Soc Hist (3)
10:30, MWF
- 104A Renaissance, Ref (3)
1:30-2:45, TTh
- 132 Minn and the NW (3)
9:30, MWF
- 142D Amer Diplomatic Hist (3)
8:30, MWF

HOME ECONOMICS (HE)

- *2 Sel, Care of Clothing (2)
2:00, TTh, Main
- *3 Clothing Const (3)
9-11:50, TTh, Main
- 4 Adv Clothing Const (3)
8:00, TTh; 2-3:50 MW, Main
- *18 Pers, Family Living (2)
9:00, TTh, Main
- *26 Home Furnishings (3)
9:00, MW; 8-9:50 F, Main
- 28 Household Equip (3)
10:00, MTWThF; 11:00 TTh Main
(1st wk; 6-10 wk inc)
- *31 Nutrition (Nurses) (3)
1:00, MWF, Main
- 32 Nutr Food Prep (Nurses)
—1, 2-3:50, M, (1), Main
—2, 2-3:50, T, Main
—3, 2-3:50, W, Main
—4, 2-3:50, Th, Main
- 73 Family Nutrition (3)
9:00, MTWThF, Main
(1st wk; 6-10 wk inc)
- HE Ed 194A Adult Educ in Home Econ
8:00, MTWThF, (3), Main
(1st wk; 6-10 wk inc)

HUMANITIES (Hum)

- *32 American Life II (3)
1:30, MWF
- *42 Survey of the Arts (2)
—1, 9:30, MWF
—2, 10:30, MWF
- 91 Proj in Hum (0)
Hrs ar

INDUSTRIAL EDUCATION (Ind)

- 4 Upholstery (2)
10-11:50, MW, Main
- 13 Plastics (2)
8-9:50, TTh, Main
- *14 Crafts (2)
4-5:50, TTh, Main
- 15 Adv Drafting (3)
10-11:50, MWF, Main
- 16 Printing (2)
4-5:50, MW, W. Jr.
- 20 Welding (2)
2-3:50, TTh, Main
- 31 Electricity II (3)
8-9:50, MWF, Main
- 44 Equipment, Mgt (2)
10:00, TTh, Main
- 51 Electronics I (3)
2-3:50, MWF, Main
- 53 Instrumentation (2)
10-11:50, TTh, Main
- 55 Estimating (2)
12:00, TTh, Main

LANGUAGES

- *Fr 2 Bgn French (3)
—1, 9:30, MWF
—2, 1:30, MWF
- Fr 5 Interm French (3)
12:30, MWF
- Fr 54 Adv Comp, Convers (3)
11:30-12:45, TTh
- Fr 77 Classical Lit (3)
1-2:15, TTh
- *Ger 2 Bgn German (3)
—1, 8:30, MWF
—2, 1:30, MWF
- Ger 5 Interm German (3)
12:30, MWF
- Ger 8 Elem Comp, Convers (2)
10:30, TTh
- Ger 71 Survey of Ger Lit (3)
9-10:15, TTh

- *Span 2 Bgn Spanish (3)
11:30, MWF
- *Swed 8 Bgn Swedish (3)
10:30, MWF

MATHEMATICS (Math)

- *1 Higher Algebra (5)
—1, 11:30, MTWThF
—2, 12:30, MTWThF
—3, 1:30, MTWThF
- *5 Modern Basic Math (5)
—1, 9:30, MTWThF
—2, 10:30, MTWThF
- *11 Col Alg, Trig I (Lect)
—1, 11:30, MWF, (5)
—2, 2:30, MWF
Col Alg Trig I (Rec)
—1, 8:30, TTh
—2, 9:30, TTh
—3, 11:30, MW
—4, 2:30, MW
Col Alg, Trig I (Quiz)
—1, 12:30, Th
—2, 1:30, Th
- *12 Col Alg, Trig II (Lect)
—1, 11:30, MWF, (5)
—2, 2:30, MWF
Col Alg, Trig II (Rec)
—1, 8:30, TTh
—2, 10:30, TTh
—3, 11:30, MW
—4, 2:30, MW
Col Alg, Trig II (Quiz)
—1, 12:30, Th
—2, 1:30, Th
- 50 Anal Geom, Calc II (5)
12:30, MTWThF
- 51 Anal Geom, Calc III (5)
—1, 9:30, MTWThF
—2, 10:30, MTWThF
- 54 Finite Analysis II (5)
8:30, MTWThF
- 63 Introd to Modern Alg (3)
8:30, MWF
- 88 Vector Analysis (3)
2:30, MWF
- 90 Introd to Math Stat (3)
1:30, MWF
- 99 Sel Topics (1-2)
Hrs ar
(perm of instr req)

MUSIC (Mu)

- 2 Basic Music Theory (4)
—1, 10:30, MTWThF
—2, 11:30, MTWThF
- 8 Adv Music Theory (3)
9:30, MWF
- 10 Recital Attendance (0)
Hrs ar
- 11 Voice (1)
Hrs ar
- 12B Appl Vocal Tech (1)
9:30, TTh
- 13 Piano (1)
Hrs ar
- 14B Class Piano (1)
9:30, TTh
- 15 Strings (1)
Hrs ar
- 16B Appl String Tech (1)
2:30, TTh
- 17 Woodwinds (1)
Hrs ar
- 18B Appl Woodwind Tech (1)
2:30, TTh
- 19 Brass (1)
Hrs ar
- 20B Appl Brass, Perc Tech (1)
1:30, TTh
- *21 Introd to Music (3)
—1, 8-9:15, TTh
—2, 11-12:15, TTh
- 39 Percussion (1)
Hrs ar
- 40 Organ (2)
Hrs ar
- *41 Orchestra (1-0)
3:30-5:10, MW
- *42 Band (1-0)
7:40-9:20, TTh
- *43 Chorus (1-0)
3:30-5:10, TTh
- 46 String Chamber Music (½)
Hrs ar
- 47 Wind Chamber Music (½)
Hrs ar
- 48 Brass Chamber Music (½)
Hrs ar
- 49 Vocal Chamber Music (½)
12:30, TTh
- 50 Adv Voice (1-2)
Hrs ar
- 51 Adv Piano (1-2)
Hrs ar
- 52 Adv Strings (1-2)
Hrs ar
- 53 Adv Woodwinds (1-2)
Hrs ar
- 54 Adv Brass (1-2)
Hrs ar
- 55 Adv Orchestra (1-0)
3:30-5:10, MW
- 56 Adv Band (1-0)
7:40-9:20, TTh
- 57 Adv Chorus (1-0)
3:30-5:10, TTh
- 62 Music in Sec School (3)
1:30, MWF
- 65 History of Music (3)
8:30, MWF
- 67 Opera Workshop (1)
12:30, MWF
- 71 Elem Conducting (2)
2:30, MWF
- 85 Recital (½)
Hrs ar
- 204 Grad Applied Music (2)
Hrs ar

NATURAL SCIENCE (NSci)

- *1B Living World (2)
10:30, TTh
- *2B Physical Science (3)
10:30, MWF
- 10 Conserv of Nat Res (3)
10:30, MWF

PHILOSOPHY (Phil)

- *3 Ethics (3)
—1, 8:30, MWF
—2, 1:30, MWF
- 51 Hist of Phil (5)
9:30, MTWThF

PHYSICAL EDUCATION FOR MEN (PE)

- *M1 Orientation to PE (1)
—1, 9:30-10:30, TTh
—2, 10:30-11:30, TTh
—3, 12:30-1:30, TTh
—4, 1:30-2:30, TTh
- M4E Basketball Fund to Feb 3
8-9:20, MWF, (1)
- M5E Gymnastics (1)
8-9:20, TTh
- M7E Wrestling—Bgn Feb 6 (1)
8-9:20, MWF
- *M12A Basketball (1)
—1, 9:30, MWF
—2, 10:30, MWF
—3, 1:30, MWF
—4, 2:30, MWF
—5, 11:30-12:30, TTh
- *M16 Volleyball (1)
—2, 11:30, MWF
—3, 1:30, MWF
—4, 2:30, MWF
—5, 12:30-1:30, TTh
- *M17 Wrestling—Bgn Feb 6 (1)
8-9:20, MWF
- *M21A Bgn Swimming (1)
—1, 9:30-10:30, MW
—2, 11:30-12:30, MW
- *M21B Interm Swimming (1)
—1, 1:30-2:30, TTh
—2, 2:30-3:30, TTh
- *M33 Gymnastics (1)
—1, 8-9:20, TTh
—2, 3:30-5, TTh
- *M38 Physical Fitness (1)
2:30-3:30, TTh
- M55 Tchg PE Activities (2)
12:30-1:30, TTh
- M66B Off Spring Sports (2)
10:30, TTh
- M68 Coaching Basketball (2)
12:30-1:30, TTh

PHYSICAL EDUCATION FOR MEN AND WOMEN (PE)

- *2 Archery (1)
—1, 10:30, MWF
—2, 9:30-10:30, TTh
—3, 10:30-11:30, TTh
- *3 Badminton (1)
11:30, MWF
- *5 Recreational Games (1)
1:30, MWF
- *6 Skating (1)
—1, 11:30, MWF
—2, 3:30-4:30, MWorF
- *7 Skiing (1)
1, 1:30-4, MorF
—2, 9:30-12, TorTh
—3, 1:30-4, TorTh
—4, 9:30-12, Sat
- *9 Bowling (1)
—1, 3-5:00, T
—2, 2-4:00, F
—3, 1-3:00, F
- *M16 Volleyball (open to women)
10:30, MWF (1)
- *21C Adv Swimming (1)
11:30, TTh
- *25 Water Safety Instr Course
3:30, MW (1)
- 30 Elem, Lead-up Games (1)
12:30, MWF
- 31 Body Mech, Stunts, Tumb
3:30, MWF (1)
- 32 Rhythms for Elem Grades
9:30, MWF (1)
- *42A Folk Dance (1)
1:30, MWF
- *43B Interm Modern Dance (1)
2:30, MWF
- *44 Square Dance (1)
12:30, MWF
- 58 Recreational Leadership (3)
12:30, MWF
- 63 Org, Admin of PE (3)
1:30, MWF
- 65 Adapted PE (3)
8:30, MWF

†Students taking these classes must allow a full 60 minutes to include showering following the class period.

PHYSICAL EDUCATION FOR WOMEN (PE)

- *W21A Basketball (1)
2:30, MWF
- *W21A Bgn Swimming (1)
2:30, MW
- *W21B Interm Swimming (1)
—1, 9:30, TTh
—2, 1:30, MW
- *W34 Apparatus and Adv Tumb (1)
9:30, MWF
- W47 Officiating (1)
2:30, TTh
- W49 Movement Education (2)
10:30, MTWThF
- W76 Theory of Indiv Sports (2)
1:30, TTh

PHYSICS (Phys)

- *5 Gen Physics (5)
9:30, MTWThF
- *8 Gen Physics (5)
10:30, MTWThF
Gen Physics 5 & 8 Lab
—1, 1:30-3:20, W
—2, 3:30-5:20, W
—3, 3:30-5:20, Th
- *12 Gen Phys for Engineers (5)
8:30, MTWThF
Gen Phys for Eng Rec
9:30, TTh
- *12 Gen Phys for Engineers
9:30, MTWThF
Gen Phys for Eng Lab
—1, 1:30-3:20, M
—2, 3:30-5:20, M
—3, 1:30-3:20, T
—4, 3:30-5:20, T
—5, 1:30-3:20, Th

- 50 Interm Gen Physics (4)
11:30, MTWThF
- 50A Interm Gen Phys Lab (1)
—1, 1:30-3:20, T
—2, 3:30-5:20, T
—3, 1:30-3:20, Th
—4, 3:30-5:20, Th
—5, 1:30-3:20, W
- 64 Electricity (3)
9:30, MWF
- 96 Electron Lect, Lab Prep
1:30, TTh (3)
Electronics Lab
2:30-5:20, Th
- 108 Modern Physics (3)
8:30, MWF

POLITICAL SCIENCE (Pol)

- *1 American Nat'l Govt (3)
8:30, MWF
- *2 American State Govt (3)
—1, 9:30, MWF
—2, 11:30, MWF
—3, 8:30-9:45, TTh
—4, 10:05-11:20, TTh
- B State in Modern World (3)
1:30, MWF
- 53 Amer Constit Law II (3)
8:30-9:45, TTh
- 55 Legislation (3)
10:05-11:20, TTh
- 62 Public Admin II (3)
10:30, MWF
- 82 Int'l Law II (3)
9:30, MWF
- 85 Probs of World Politics
8:30, MWF (3)
- 87 Govts of West Europe (3)
11:30, MWF
- 99 Honors (Field II) (1-3)
12:30, M
- 160 Amer Pol Thought (3)
10:30, MWF
- 163 Pol Theory, Utopia (3)
1:30, MWF
- 165 Dev of Pol Thought:
Middle Ages (3)
11:30, MWF

PSYCHOLOGY (Psy)

- PerOr 1 How to Study (0-1)
10:30, TTh
- *PerOr 6 Human Dev, Adjustment
9:30, MTWThF (5)
- *1 Gen Psychology (3)
8:30, MWF
- *2 Gen Psychology (3)
8:00, MWF, Main
- 59 Elem Exp Psych (2)
1-2:50, TTh
- 74 Psych in Pers Work (3)
9:00, MWF, Main
- 82 Later Childhood, Adol (3)
2:00, MWF, Main
- 86 Psych of Indiv Diff (3)
1:00, MWF, Main
- 91 Abnormal Psych (3)
10:00, MWF, Main
- 95 Psych of Personality (3)
10-11:15, TTh, Main
- 96 Research in Psych (ar)
Hrs ar
- 98 Senior Seminar (1)
11:00, W, Main
- 99 Readings in Psych (ar)
Hrs ar

SOCIOLOGY (Soc)

- *Anth 1 Prehistoric Man, Cult (5)
9:30, MTWThF
- *1 Introd to Soc (5)
—1, 8:30, MTWThF
—2, 11:30, MTWThF
—3, 1:30, MTWThF
- 2 American Community (3)
10:30, MTWThF
- 3 Social Problems (3)
10:30-11:45, TTh
- 51 Case Method Applied (3)
8:00, MTWThF
- 53 Elem of Criminology (3)
10:30, MWF
- 71 Social Strat, Mob (3)
1:30, MTWThF
- 144 The Family (3)
9:30, MTWThF

SPEECH (Spch)

- *1 Fund of Speech (3)
—1, 8:30, MWF
—2, 9:30, MWF
—3, 11:30, MWF
—4, 12:30, MWF
—5, 1:30, MWF
- *2 Fund of Speech (3)
—1, 8:30, MWF
—2, 2:30, MWF
- *3 Fund of Speech (3)
11:30, MWF
- 4 Voice, Articulation (3)
1:30, MWF
- *31 Introd to Theater (3)
10:30, MWF
- 32 Fundamentals of Acting (3)
12-2:00, MWF, Main
- 34 Stagecraft (3)
2-4:00, MWF, Main
- 53 Persuasion (3)
10:30, MWF
- 84 Voice Science (3)
9:30, MWF
- 87 Speech Pathology II (3)
8:30, MWF
- 88 Cor of Spch Disorders (3)
12:30, MWF
- 91 Clin Pract, Spch Cor (ar)
3:30, MWF
- 93 Audiom, Hearing Aids (3)
9:30-10:45, TTh
- 95 Special Areas of Study
8:30, TTh (2)
- 97 Intercollegiate Spch (ar)
2:30, T
- 105 Theory of Rdg, Acting (3)
Hrs ar
- 181 Ind Study—Spch, Drama
Hrs ar (ar)

Preliminary Duluth Campus Class Schedule, 1960-61

Spring, 1961

Spring, 1961

- AIR SCIENCE (Air)**
- 13 Aerospace Power I (1)
 - 1, 8:30, MW
 - 2, 10:30, MW
 - 3, 2:30, MW
 - 4, 1:30, TTh
 - Leadership Lab I (0)
 - 1, 8:30, T
 - 2, 2:30, T
 - 23 Leadership Lab II (0)
 - 1, 8:30, T
 - 2, 2:30, T
 - 63 AP Officer Dev III (3)
 - 9:30, MTWTh
 - Leadership Lab III (0)
 - 1, 8:30, T
 - 2, 2:30, T
 - 73 Leadership Lab IV (0)
 - 1, 8:30, T
 - 2, 2:30, T

- ART**
- *4 Art Today (3)
 - 1, 8:30, MWF
 - 2, 2:30, MWF
 - *5 Intro to Art (3)
 - 1, 8:30-10:20, MWF
 - 2, 10:30-12:20, MWF
 - 3, 2:30-4:20, MWF
 - *10,11 Drawing (3 cr each)
 - 8:30-10:20, MWF
 - 20,21 Design (2 cr each)
 - 8:30-10:20, TTh
 - 30,31,32 Ceramics (3 cr each)
 - 1, 9:30-12:20, TTh
 - 2, 2:30-5:20, TTh
 - 40,41,42 Figure Drawing (2 cr each)
 - 2:30-4:20, TTh
 - 50,51,52 Crafts (3 cr each)
 - 11:30-2:20, TTh
 - 57 Art in Sec Educ (3)
 - 2:30-3:45, TTh
 - 60,61,62 Painting (3 cr each)
 - 2:30-4:20, MWF
 - 70,71,72 Print Proc (2 cr each)
 - 9:30-11:20, TTh
 - 80,81,82 Sculpture (3 cr each)
 - 9:30-11:20, MWF
 - 91 Probs: Print Proc (2-6)
 - 9:30-11:20, TTh
 - 92 Probs: Art Educ (2-6)
 - Hrs ar
 - 93 Probs: Gallery Practice
 - Hrs ar (2-6)
 - 96 Probs: Drawing, Painting
 - 2:30-4:20, MWF (2-6)
 - 97 Probs: Sculpture (2-6)
 - 9:30-11:20, MWF
 - 98 Probs: Ceramics (2-6)
 - 1, 9:30-12:20, TTh
 - 2, 2:30-5:20, TTh
 - 99 Probs: Design, Crafts
 - 11:30-2:20, TTh (2-6)
 - 100 Art Seminar (3)
 - 11:30, MWF
 - 110 Probs: Crafts (3)
 - 11:30-2:20, TTh
 - 150 Probs: Painting (3)
 - 2:30-4:20, MWF
 - 170 Probs: Ceramics (3)
 - 1, 9:30-12:20, TTh
 - 2, 2:30-5:20, TTh
 - 180 Probs: Sculpture (3)
 - 9:30-11:20, MWF
 - ArtEd 295 Probs: Art Educ (ar)
 - Hrs ar
 - ArtH 75 Oriental Art (3)
 - 1:30, MWF

- BIOLOGY**
- Bact 20 Household Micro (3)
 - 1:30-4:20, MW
 - Bact 53 Gen Bact Lect (5)
 - 12:30, MWF
 - Gen Bact Lab
 - 9:30-12:20, TTh
 - *Biol 1 Gen Biol Lect (5)
 - 12:30, MWF
 - Gen Biol Lab
 - 1, 1:30-3:20, MW
 - 2, 3:30-5:20, MW
 - 3, 8:30-10:20, TTh
 - 4, 10:30-12:20, TTh
 - 5, 1:30-3:20, TTh
 - *Biol 2 Gen Biol Lect (5)
 - 9:30, MWF
 - Gen Biol Lab
 - 1, 1:30-3:20, MW
 - 2, 3:30-5:20, MW
 - 3, 8:30-10:20, TTh
 - 4, 10:30-12:20, TTh
 - 5, 1:30-3:20, TTh
 - Biol 98 Seminar (ar)
 - 12:30, T
 - Biol 99 Probs (1)
 - Hrs ar
 - Bot 52 Plant Taxonomy Lect (3)
 - 12:30, MF
 - Plant Taxonomy Lab
 - 1, 1:30-5:20, W
 - 2, 1:30-5:20, Th
 - Bot 53 Plant Anatomy (3)
 - 10:30-12:20, MWF
 - Bot 115 Flora of Minnesota (3)
 - 8:30-11:20, MW
 - Zool 52 Histology Lect (5)
 - 12:30, MWF
 - Histology Lab
 - 1:30-3:20, MWF
 - Zool 54 Gen Physiology Lect (5)
 - 12:30, MWF
 - Gen Physiology Lab
 - 8:30-11:20, TTh
 - Zool 62 Animal Parasitology (5)
 - 8:30-11:20, MWF
 - Zool 64 Field Ornithology (3)
 - 8:30-11:20, TTh
 - Zool 72 Ecol of Animal Pop (3)
 - 10:30, MWF
 - Zool 73 Nat Hist of Invert (3)
 - 1:30-4:20, TTh
 - Zool 74 Nat Hist of Vert (3)
 - 1:30-3:20, MW

- BUSINESS AND ECONOMICS (BE)**
- *3 Prin of Econ (5)
 - 1, 8:30, MTWThF
 - 2, 9:30, MTWThF
 - 3, 10:30, MTWThF
 - 4, 11:30, MTWThF
 - 5, 1:30, MTWThF
 - 6, 2:30, MTWThF
 - 7, 3:30, MTWThF
 - 13 Typewriting (1)
 - 8:30, MWF
 - 16 Elem Shorthand (3)
 - 9:30, MTWThF
 - 19 Office Mgt (3)
 - 1:30, MWF
 - 33 Prin of Accounting (3)
 - 1, 8:30, MWF
 - 2, 9:30, MWF
 - 3, 10:30, MWF
 - 4, 1:30, MWF

- 43 Elem of Statistics (2)
 - 1, 8:30, TTh
 - 2, 9:30, TTh
 - 3, 10:30, TTh
- 53 Government Regulation (3)
 - 1, 8:30, MWF
 - 2, 8:30-9:20, TTh
- 60 Transportation (3)
 - 1:30, MWF
- 65 Business Finance (3)
 - 10:30, MWF
- 73 Intern Accounting III (3)
 - 10:30-12:20, TTh
- 78 Auditing Prin. Proc (4)
 - 8:30-10:20, TTh
- 79 Adv Accounting Topics (3)
 - 11:30, MWF
- 33 Industrial Relations (3)
 - 2:30, MWF
- 93 Hist of Econ Thought (3)
 - 8:30, MWF
- 96 Econ Anal: Pub Fin (3)
 - 1, 9:30, MWF
 - 2, 10:30, MWF
- 105C Intern Accounting III (3)
 - 10:30-12:20, TTh
- 168 Econ of Pub Fin (3)
 - 9:30, MWF

Note: Students in BE 33 and 43 are required to leave 11:30 to 12:20 Tuesday free for exams. All B & E majors are requested to leave 12:30 to 1:20 Tuesday free for departmental convocations.

- CHEMISTRY (Chem)**
- 5 Org Chem Lect-Rec (5)
 - 1:30, MTWThF
 - Org Chem Lab
 - 1, 2:30-4:20, MW
 - 2, 2:30-4:20, TTh
 - *7 Gen Chem Lect-Rec (5)
 - 10:30, MTWThF
 - Gen Chem Lab
 - 1, 2:30-4:20, MW
 - 2, 8:30-10:20, TTh
 - 3, 2:30-4:20, TTh
 - 12 Semimicro Qual Lect (5)
 - 1, 8:30, MWF
 - 2, 1:30, MWF
 - Semimicro Qual Lab
 - 1, 1:30-4:20, MW
 - 2, 2:30-5:20, MW
 - 3, 8:30-11:20, TTh
 - 4, 9:30-12:20, TTh
 - 5, 1:30-4:20, TTh
 - 6, 2:30-5:20, TTh
 - 16 Carbon Compounds (4)
 - 1:30, MTWThF
 - 52 Quant Anal Lect (4)
 - 1:30, TTh
 - Quant Anal Lab
 - 2:30-5:20, MW
 - 59 Org Chem Lect-Quiz (3)
 - 11:30, MTWThF
 - 59A Org Chem Lab (1)
 - 1:30-5:20, Th
 - 62 Org Chem Lect-Quiz (3)
 - 11:30, MTWThF
 - 62A Org Chem Lab (2)
 - 1:30-4:50, MW
 - 70 Lab Glassblowing (2)
 - 2:30-5:20, MW
 - (Cons of Instr)
 - 86 Phys Chem Lect (3)
 - 11:30, TTh
 - Phys Chem Lab
 - 2:30-5:20, W
 - 98 Seminar (1)
 - 2:30, F
 - 99 Sr Research: Lab, Conf
 - Hrs ar (1)
 - 121 Instrumental Anal Lect
 - 2 hrs ar (3)
 - Instrumental Anal Lab
 - 4 hrs ar
 - 142 Phys Chem Lect (3)
 - 8:30, MWF
 - 144 Phys Chem Lab (2)
 - 2:30-5:20, TTh

- EDUCATION (Ed)**
- 48 Orientation to Tchg (1)
 - 1, 8:00, MW, Main
 - 2, 8:00, TTh, Main
 - 3, 1:00, MW, Main
 - 4, 2:00, TTh, Main
 - 51A Group Leadership (1/2)
 - Hrs ar
 - 51B Group Leadership (1/2)
 - Hrs ar
 - 51C Group Leadership (1)
 - Hrs ar
 - 61A, 81A School Society (4 cr each)
 - 2:00, MTWThF, Main
 - 61B, 81B Educ Psch (4 cr each)
 - 8:00, MTWThF, Main
 - 61C Curric. Meth in Elem Educ
 - 1:00, MWF (5), Main
 - (also 1 hr obs daily—pref 9 am)
 - 81C Curric. Meth in Sec Educ
 - 1, 8:00, MTWThF (5) Main
 - 2, 9:00, MTWThF, Main
 - 3, 3:00, MTWThF, Main
 - 90 Probs of Tchg Prof (3)
 - 1, 8:30, MWF
 - 2, 4:30-5:45, MW, Main
 - (Sec 2 open only to those conc doing student tchg)
 - EdCI 60 Story Telling (2)
 - 3:00, MWF, Main
 - EdCI 68 Tchg Lang Arts, Elem Sch
 - 2:00, MWF (3), Main
 - EdCI 82 Meth of Tchg Bookkeeping
 - 4:00, M (1)
 - EdCI 83 Meth of Tchg Shorthand
 - 4:00, W (1)
 - EdCI 89 Tchg Sec Stud, Sec Sch
 - 2:00, MWF (3), Main
 - EdCI 101 Driver Education (3)
 - 2:30-3:20, MWF
 - EdCI 103 Tchg Science, Elem Sch
 - 4:30-5:45, TTh (3)
 - EdCI 105 Audio-Vis Mat in Educ (3)
 - 1, 8:10:30, Sat
 - 2, 4:30-5:45, MW
 - EdCI 122 Lit for Adolescents (3)
 - 6:20-5:45, MW
 - EdCI 125 Group Proc in Guidance
 - 4:15-5:30, TTh (3)
 - EdCI 149 Tchg Superv of Math
 - Elem Sch (3)
 - 2:00, MWF, Main
 - EdCI 271 Probs: Curric Const (ar)
 - Hrs ar
 - EDSx 110 Educ Meas in Classroom
 - 4:30-5:45, TTh (3), Main
 - EDSx 124 School Counseling Proc
 - 4:30-5:45, MW (3), Main
 - EDSx 193 Psch of Human Learning
 - 4:30-5:45, TTh (3), Main
 - EdT 1A Dir Tchg: Elem Sch (6-7)
 - Hrs ar
 - EdT 1B Dir Tchg: Elem Sch (6-7)
 - Hrs ar
 - EdT 1C Dir Tchg: Kdg, Prim (6-7)
 - Hrs ar

- EdT 77C Dir Tchg: Kdg, Prim (6-7)
 - Hrs ar
- EdT 82A Dir Tchg: Sec Sch (5)
 - Block of 4 hrs req
- EdT 82B Dir Tchg: Sec Sch
 - Block of 4 hrs req
- EdT 82C Dir Tchg: Sec Sch
 - Block of 4 hrs req
- Art 57 Art in Sec Educ
 - (See Art)
- ArtEd 295 Probs: Art Educ (ar)
 - Hrs ar
- MuEd 51 Tchg Music, Elem Sch (3)
 - 4-5:15, TTh, LS
- PE 52 Tchg PE, Elem Sch
 - (See PE for Men and Women)

- ENGINEERING**
- Draw 16 Engin Graphics Lect (3)
 - 11:30, TTh
 - Engin Graphics Lab
 - 1, 11:30-1:20, WF
 - 2, 1:30-3:20, WF
 - MM 27 Engin Mechanics (3)
 - 8:30, MWF
 - GE 70 Slide Rule (1)
 - Hrs ar

- ENGLISH (Eng)**
- X Elem Writing, Reading (0)
 - 3:30, MWF
 - *3A Freshman English (4)
 - 10:30, MTThF
 - *3B Freshman English (4)
 - 1, 8:30, MTThF
 - 2, 8:30, MTThF
 - 3, 10:30, MTThF
 - 4, 10:30, MTThF
 - 5, 2:30, MTThF
 - *4 Freshman Composition (3)
 - 1, 9:30, MWF
 - 2, 11:30, MWF
 - 3, 2:30, MWF
 - *5 Freshman Composition (3)
 - 1, 8:30, MWF
 - 2, 10:30, MWF
 - 3, 11:30, MWF
 - 4, 1:30, MWF
 - 5, 2:30, MWF
 - *6 Freshman Composition
 - 3 sections each hour
 - 8:30-4:20, MWF, on Upper Campus only.
 - *23 Intro to Literature (5)
 - 1, 9:30, MTWThF
 - 2, 1:30, MTWThF
 - 27 Adv Writing (3)
 - 9:30, TTh
 - 28 Adv Writing (3)
 - 10:30, TTh
 - 39 20th Century Lit (3)
 - 9:30, MWF
 - 54 World Lit (3)
 - 11:30, MWF
 - 59 Shakespeare (3)
 - 1:30, MWF
 - 69 Victorian Prose, Poetry
 - 1:30, MWF (3)
 - 71 Literary Criticism (3)
 - 10:30, MWF
 - 74 American Lit (3)
 - 1, 11:30, MWF
 - 2, 2:30, MWF
 - 84 Dev of Dramatic Lit (3)
 - 3:30, MWF
 - 97 Indep Reading (3)
 - Hrs ar
 - 99 17th Century Lit (3)
 - 2:30, MWF
 - 164 Mod English Grammar (3)
 - 2:30, MWF
 - Jour 50 Typography (3)
 - 2:30, MWF

- GEOGRAPHY (Geog)**
- *10 Prin of Physical Geog (3)
 - 1, 8:30, MWF
 - 2, 10:30, MWF
 - 3, 1:30-2:45, TTh
 - *11 Prin of Cultural Geog (3)
 - 1, 9:30, MWF
 - 2, 8:30-9:45, TTh
 - 3, 1:30, MWF
 - *20 Weather, Climate (5)
 - 11:30, MTWThF
 - 74 The Far East (3)
 - 8:30, MWF
 - 91 Proseminar in Phys, Cult Geog (2)
 - 1:30-2:45, TTh
 - 102 Central Europe (3)
 - 12:30, MWF
 - 126 Australia, New Zealand
 - 11:30, MWF (3)

- GEOLOGY (Geol)**
- *2 Hist Geol (3)
 - 12:30, MWF
 - *B Hist Geol Lab (2)
 - 1, 8:30-10:20, TTh
 - 2, 10:30-12:20, TTh
 - 3, 12:30-2:20, TTh
 - 25 Rock Study, (3)
 - 1:30-3:20, TTh
 - 55 Field Methods (2)
 - 1:30-3:20, F
 - 60 Econ Geol (3)
 - 10:30-12, TTh
 - 70 Sedimentation (3)
 - 11:30, MWF
 - 80 Geomorphology (3)
 - 9:30, MWF
 - 98 Petrog, Petrol Lect (5)
 - 1:30, MWF
 - Petrog, Petrol Lab
 - 2:30-4:20, MW
 - 99 Geologic Probs (2)
 - Hrs ar

- HEALTH EDUCATION (HeEd)**
- *3 Personal Health (2)
 - 1, 9:30, TTh
 - 2, 11:30, TTh
 - 3, 1:30, TTh
 - 4, 2:30, TTh
 - 5 First Aid, Safety (1)
 - 1, 9:30, TTh
 - 2, 1:30, TTh

- HISTORY (Hist)**
- *3 Civ of Mod World (3)
 - 11:30, MWF
 - 6 English History (3)
 - 1:30, MWF
 - 13 Ancient, Medieval Civ (3)
 - 9:30, MWF
 - *21 Amer Hist to 1848 (3)
 - 8:30-9:45, TTh
 - *22 Amer Hist (late 19th Cent) (3)
 - 1, 2:30-3:45, TTh
 - 2, 8:30, MWF

- *23 Amer Hist (20th Cent) (3)
 - 1, 1:30, MWF
 - 2, 10:30, MWF
 - 3, 11:30, MWF
 - 4, 1:30-2:45, TTh
- 66 20th Cent Europe (3)
 - 12:30, MWF
- 72 English Constit Hist (3)
 - 10:30-11:45, TTh
- 85 Amer Econ. Soc Hist (3)
 - 10:30, MWF
- 105A Renaissance, Ref (3)
 - 1:30-2:15, TTh
- 133 Minn and the NW (3)
 - 9:30, MWF
- 143D Amer Diplomatic Hist (3)
 - 8:30, MWF

- HOME ECONOMICS (HE)**
- *3 Clothing Const (3)
 - 9-11:50, TTh, Main
 - *31 Intro to Nutrition (3)
 - 10:00, MWF, Main
 - *36 Child Care, Dev (3)
 - 11:00, MW, Main
 - 2 hrs obs
 - 42 Food Preparation I (3)
 - 11-12:50, MW; 11:00, F, Main
 - 51 Family Clothing (3)
 - 8:00, MTWThF; 8:50-9:50, MW, Main
 - (1st wk; 6-10 wk inc)
 - 72 Meal Mgt (3)
 - 10-11:50, TTh; 1:00, F, Main
 - 80 Housing (3)
 - 2:00, MTWThF; 2:50-3:50, TTh, Main
 - (1st wk; 6-10 wk inc)
 - 82 Family Relationships (3)
 - 10:00, MTWThF, Main
 - (1st wk; 6-10 wk inc)
 - 83 Home Mgt (3)
 - Hrs ar
 - 84 Home Mgt House Resid (3)
 - Hrs ar

- HUMANITIES (Hum)**
- *33 American Life III (3)
 - 1:30, MWF
 - *43 Survey of the Arts (2)
 - 1, 9:30, MWF
 - 2, 10:30, MWF
 - 91 Proj in Hum (0)
 - Hrs ar

- INDUSTRIAL EDUCATION (Ind)**
- 2 Machine Woodworking (5)
 - 8-9:50, MTWThF, LS
 - 7 Build Constr, Drafting
 - 10-11:50, MWF (3), Main
 - *14 Crafts (2)
 - 2-3:50, TTh, Main
 - *17 Gen Metal Work (2)
 - 10-11:50, TTh, Main
 - 52 Electronics II (3)
 - 2-3:50, MWF, Main
 - 54 Television (5)
 - 8-9:50, MTWThF, Main
 - 59 Design (2)
 - 1:00, TTh, Main
 - 66 Related Subjects (2)
 - 12:00, TTh, Main
 - 101 Tests in Ind Subj (3)
 - 4-5:50, MW, Main

- LANGUAGES**
- *Fr 3 Bgn French (3)
 - 1, 9:30, MWF
 - 2, 1:30, MWF
 - Fr 6 Adv French Reading (3)
 - 12:30, MWF
 - Fr 55 Adv Comp, Convers (3)
 - 11:30-12:45, TTh
 - Fr 78 19th Cent Lit (3)
 - 1-2:15, TTh
 - *Ger 3 Bgn German (3)
 - 1, 8:30, MWF
 - 2, 1:30, MWF
 - Ger 6 Prose, Poetry (3)
 - 12:30, MWF
 - Ger 9 Elem Comp, Convers (2)
 - 10:30, TTh
 - Ger 72 Survey of German Lit (3)
 - 9-10:15, TTh
 - *Span 3 Bgn Spanish (3)
 - 11:30, MWF
 - *Swed 9 Bgn Swedish (3)
 - 10:30, MWF

- MATHEMATICS (Math)**
- *1 Higher Algebra (5)
 - 1, 12:30, MTWThF
 - 2, 1:30, MTWThF
 - *5 Modern Basic Math (5)
 - 1, 9:30, MTWThF
 - 2, 10:30, MTWThF
 - *11 Col Alg, Trig I (Lect)
 - 1, 11:30, MWF (5)
 - 2, 2:30, MWF
 - Col Alg I (Rec)
 - 1, 8:30, TTh
 - 2, 9:30, TTh
 - Col Alg, Trig I (Quiz)
 - 1, 12:30, Th
 - 2, 1:30, Th
 - *12 Col Alg, Trig II (Lect)
 - 1, 11:30, MWF (5)
 - 2, 2:30, MWF
 - Col Alg, Trig II (Rec)
 - 1, 9:30, TTh
 - 2, 10:30, TTh
 - Col Alg, Trig II (Quiz)
 - 1, 12:30, Th
 - 2, 1:30, Th
 - 49 Anal Geom, Calc I (Lect)
 - 1, 11:30, MWF (5)
 - 2, 2:30, MWF
 - Anal Geom, Calc I (Rec)
 - 1, 8:30, TTh
 - 2, 10:30, MW
 - 3, 10:30, TTh
 - 4, 11:30, MW
 - 5, 2:30, MW
 - Anal Geom, Calc I (Quiz)
 - 1, 12:30

Preliminary Duluth Campus Class Schedule, 1960-61

Spring, 1961

Spring, 1961

MUSIC (Mu)

- 3 Basic Music Theory (4)
—1, 10:30, MTWThF
—2, 11:30, MTWThF
- 9 Adv Music Theory (3)
9:30, MWF
- 10 Recital Attendance (0)
Hrs ar
- 11 Voice (1)
Hrs ar
- 12C Appl Vocal Tech (1)
9:30, TTh
- 13 Piano (1)
Hrs ar
- 14C Class Piano (1)
9:30, TTh
- 15 Strings (1)
Hrs ar
- 16C Appl String Tech (1)
2:30, TTh
- 17 Woodwinds (1)
Hrs ar
- 18C Appl Woodwind Tech (1)
2:30, TTh
- 19 Brass (1)
Hrs ar
- 20C Appl Brass, Perc Tech (1)
1:30, TTh
- *21 Intro to Music (3)
—1, 8-9:15, TTh
—2, 11-12:15, TTh
- 39 Percussion (1)
Hrs ar
- 40 Organ (2)
Hrs ar
- *41 Orchestra (1-0)
3:30-5:10, MW
- *42 Band (1-0)
7:40-9:20, TTh
- *43 Chorus (1-0)
3:30-5:10, TTh
- 46 String Chamber Music (1/2)
Hrs ar
- 47 Wind Chamber Music (1/2)
Hrs ar
- 48 Brass Chamber Music (1/2)
Hrs ar
- 49 Vocal Chamber Music (1/2)
12:30, TTh
- 50 Adv Voice (1-2)
Hrs ar
- 51 Adv Piano (1-2)
Hrs ar
- 52 Adv Strings (1-2)
Hrs ar
- 53 Adv Woodwinds (1-2)
Hrs ar
- 54 Adv Brass (1-2)
Hrs ar
- 55 Adv Orchestra (1-0)
3:30-5:10, MW
- 56 Adv Band (1-0)
7:40-9:20, TTh
- 57 Adv Chorus (1-0)
3:30-5:10, TTh
- 63 Appl Music Teaching (2)
Hrs ar
- 66 History of Music (3)
8:30, MWF
- 67 Opera Workshop (1)
12:30, MWF
- 72 Adv Conducting (2)
2:30, MWF
- 85 Recital (1/2)
Hrs ar
- 204 Grad Applied Music (2)
Hrs ar

NATURAL SCIENCE (NSci)

- *1C Living World (2)
10:30, TTh
- *2C Physical Science (3)
10:30, MWF

PHILOSOPHY (Phil)

- *1 Probs of Phil (3)
—1, 8:30, MWF
—2, 1:30, MWF
- 52 Hist of Phil (5)
9:30, MTWThF

PHYSICAL EDUCATION FOR MEN (PE)

- *M1 Orientation to PE (1)
—1, 9:30-10:30, TTh
—2, 11:30-12:30, TTh
- M4F Baseball, Track, Field—
Bgn May 3 (1)
8-9:20, MWF
- M5F Apparatus (1)
8-9:20, TTh
- M6F Swimming to May 1 (1)
8-9:20, MWF
- M8F Golf, Tennis (2)
9:30, MWF
- *M15 Softball (1)
—1, 9:30, MWF
—2, 11:30, MWF
—3, 12:30, MWF
—4, 1:30, MWF
—5, 2:30, MWF
—6, 12:30-1:30, TTh
- *M16 Volleyball (1)
—1, 10:30, MWF
—2, 11:30, MTWThF
to Apr 28
—3, 2:30, MWF
—4, 1:30-2:30, TTh
- *M21A Bgn-Swimming (1)
—1, 10:30, MW
—2, 11:30, MW
- *M21B Interm Swimming to May 3
—1, 8-9:20, MWF (1)
—2, 1:30-2:30, TTh
—3, 2:30-3:30, TTh
- *M34 Apparatus (1)
8-9:20, TTh
- *M35 Track—1/2 of the quarter
3:30-4:30, MTWThF (1)
- *M38 Physical Fitness (1)
2:30-3:30, TTh
- M55 Tech PE Activities (2)
1:30-2:30, TTh
- M66C Offic Spring Sports (1)
11:30, TTh
- M69 Coach Baseball, Track (2)
10:30, TTh

PHYSICAL EDUC FOR MEN AND WOMEN (PE)

- *2 Archery (1)
—1, 1:30, MWF
—2, 9:30-10:30, TTh
—3, 10:30-11:30, TTh
—4, 1:30-2:30, TTh
- *4 Golf—1 added hr req (1)
—1, 10:30, M
—2, 10:30, T

- 3, 3:30, W
—4, 10:30, Th
—5, 10:30, F
- *8 Tennis—Bgn May 1 (1)
—1, 10:30, MTWThF
—2, 11:30, MTWThF
—3, 12:30, MTWThF
—4, 4-5:50, MWF
- *9 Bowling (1)
—1, 3-5:00, T
—2, 3-5:00, F
- *23 Synchronized Swimming (1)
1:30, MW
- *24 Life Saving (1)
2:30, MW
- *25 Water Safety Instr Course
11:30, TTh (1)
- 30 Elem Lead-up Games (1)
3:30, MWF
- 31 Body Mech, Stunts, Tumb
9:30, MWF
- 32 Rhythms for Elem Grades
12:30, MWF (1)
- *36 Trampoline Activities (1)
3:30, TTh
- *41 Ballroom Dance (1)
3:30, MWF
- *42B Interm Folk Dance (1)
11:30, MWF
- *43A Modern Dance (1)
2:30, MWF
- 45 Sports Apprec (elective beyond
4 or activity) (1)
8:30, TTh
- 52 Tech PE Elem Sch (2)
10:30, TTh
- 56 Intro to Camping (2)
1:30, TTh
- 66 Kinesiology (3)
8:30, MWF
- 92 Supervision of PE (3)
1:30, MWF
- 95 Tests and Measurements
in PE (3)
12:30, MWF

†Students taking these classes must allow a full 60 minutes to include showering following the class period.

PHYSICAL EDUCATION FOR WOMEN (PE)

- *W15 Softball (1)
11:30, MWF
- *W16 Volleyball (1)
2:30, MWF
- *W21A Bgn Swimming (1)
9:30, TTh
- *W21B Interm Swimming (1)
3:30, MW
- *W37 Tech of Relaxation (1)
2:30, TTh
- W77 Dance Theory, Teaching
1:30, TTh (2)

PHYSICS (Phys)

- *6 Gen Physics (5)
9:30, MTWThF
- *9 Gen Physics (5)
10:30, MTWThF
- Gen Physics 6 & 9 Lab
—1, 1:30-3:20, W
—2, 3:30-5:20, W
—3, 3:30-5:20, Th
- *12 Gen Phys for Engineers
8:30, MTWThF (5)
Gen Phys for Eng Lab
—1, 1:30-3:20, Th
—2, 3:30-5:20, Th
- *13 Gen Phys for Engineers
9:30, MTWThF (5)
Gen Phys for Eng Lab
—1, 1:30-3:20, M
—2, 3:30-5:20, M
—3, 1:30-3:20, T
—4, 3:30-5:20, T
—5, 1:30-3:20, Th
- 51 Interm Gen Physics (4)
11:30, MTWThF
- 51A Interm Gen Phys Lab (1)
—1, 1:30-3:20, T
—2, 3:30-5:20, T
—3, 1:30-3:20, Th
- 68 Magnetism (3)
9:30, MWF
- 97 Electron Lect, Prep (3)
1:30, TTh
Electronics Lab
2:30-5:20, Th
- 110 Modern Physics (3)
8:30, MWF

POLITICAL SCIENCE (Pol)

- *1 American Nat'l Govt (3)
—1, 10:30, MWF
—2, 8:30-9:45, TTh
11:30, MWF
- *2 American State Govt (3)
11:30, MWF
- *3 Amer Municipal Govt (3)
—1, 8:30, MWF
—2, 1:30, MWF
—3, 10:05-11:20, TTh
—4, 8:30-9:45, TTh
- *25 Int'l Relations (3)
8:30, MWF
- 51 Govt Conservation (3)
9:30, MWF
- 63 Public Admin III (3)
10:30, MWF
- 68 Probs of Nat'l Govt (3)
10:05-11:20, TTh
- 83 Int'l Law III (3)
9:30, MWF
- 88 Latin Amer Govts, Pol (3)
11:30, MWF
- 99 Honors (Field II) (1-3)
12:30, M
- 162 Recent Pol Thought (3)
1:30, MWF
- 166 Dev of Pol Thought: Early
Mod (3)
11:30, MWF

PSYCHOLOGY (Psy)

- PerOr 1 How to Study (0-1)
10:30, TTh
- *PerOr 6 Human Dev. Adjustment
9:30, MTWThF (5)
- *1-2 Gen Psychology (6)
10:30, MTWThF
- *2 Gen Psychology (3)
8:30, MWF
- 58 Elem Stat Meth (5)
9:00, MTWThF, Main
- 60 Elem Exp Psych (2)
1-2:50, TTh, Main
- 73 Elem of Voc Psych (3)
11:00, MWF, Main
- Elem of Voc Psych Lab
12:00, F, Main
- 89 Learning, Conditioning
1:00, MWF (3), Main
- 92 Abnormal Psych (3)
10:00, MWF, Main

- 96 Research in Psych (ar)
Hrs ar
- 97 Indiv Intell Testing (5)
8:00, MTWThF, Main
- 98 Senior Seminar (1)
2:00, M, Main
- 99 Readings in Psych (ar)
Hrs ar

SOCIOLOGY (Soc)

- *Anth 2 Cultural Anth (5)
10:30, MTWThF
- *1 Intro to Soc (5)
—1, 8:30, MTWThF
—2, 9:30, MTWThF
—3, 2:30, MTWThF
- 2 American Community (3)
8:30, MTWThF
- 3 Social Problems (3)
1:30, MTWThF
- 41 Marriage Analysis (3)
10:30, MTWThF
- 58 Elem Stat Meth (5)
(See Psych 58)
- 60 Population Trends (3)
11:30, MTWThF
- 90 Meth of Soc Research (3)
8:30-10:20, TTh
- 91 Theories of Soc Order (3)
10:30, MTWThF

SPEECH (Spch)

- *1 Fund of Speech (3)
—1, 8:30, MWF
—2, 9:30, MWF
—3, 10:30, MWF
—4, 11:30, MWF

- 5, 12:30, MWF
—6, 1:30, MWF
- *2 Fund of Speech (3)
—1, 8:30, MWF
—2, 12:30, MWF
- *3 Fund of Speech (3)
11:30, MWF
- 4 Voice, Articulation (3)
2:30, MWF
- *31 Intro to Theater (3)
10:30, MWF
- 71 Scenic Design (3)
11-12:15, TTh, Main
- 72 Stage Lighting, Costuming
2-3:15, TTh, (3), Main
- 74 Fund of Stage Direct (3)
2-4:00, MWF, Main
- 81 Oral Interpretation (3)
8:30-9:45, TTh
- 89 Probs in Spch Cor (3)
1:30, MWF
- 91 Clin Pract, Spch Cor (ar)
3:30, MWF
- 94 Spch Reading, Aud Train
9:30, TTh; 6-7:00, T (3)
- 95 Special Areas of Study
8:30, TTh (2)
- 99 Spch Correction Sem (3)
2:30, MWF
- *95 Theory of Rdg, Acting (3)
Hrs ar
- 106 Discussion (3)
9:30, MWF
- 181 Ind Study—Spch, Drama
Hrs ar (ar)

1960 - 61 Calendar

Summer Session, 1960

First Term

- June 13 Orientation and registration for first term
- 14 Classes begin; fees due
- July 4 Independence Day, Holiday
- 16 First term closes

Second Term

- July 18 Registration and payment of fees for second term
- 19 Classes begin
- Aug. 19 Commencement, 8:00 p.m.
- 20 Second term closes

Fall Quarter, 1960

- Sept. 16 Fall Quarter Registration
- 19-23 Fall Quarter Registration
- 23 Last day for payment of undergraduate fees
- 26 Fall Quarter classes begin
- 30 Last day for registration and payment of fees for the Graduate School and for teachers in service
- Oct. 12 Columbus Day, Holiday
- 29 Homecoming Day
- Nov. 11 Veterans' Day, Holiday
- 24 Thanksgiving Day, Holiday
- 25-26 Classes excused
- Dec. 9-10 Final examinations
- 12-15 Final examinations
- 17 Fall Quarter closes

Winter Quarter, 1961

- Dec. 27 Last day for payment of Winter Quarter fees by undergraduate students in residence Fall Quarter
- 29-30 Registration for new students
- Jan. 3 Winter Quarter classes begin
- 3 Winter Quarter fees due for new students
- 6 Last day for registration and payment of fees for the Graduate School and for teachers in service
- Feb. 22 Washington's birthday, Holiday
- Mar. 10-11 Final examinations
- 13-16 Final examinations
- 16 Last day for payment of Spring Quarter fees by undergraduate students in residence Winter Quarter
- 18 Winter Quarter closes

Spring Quarter, 1961

- Mar. 23 Registration for new students
- 24 Spring Quarter fees due for new students
- 27 Spring Quarter classes begin
- 30 Last day for registration and payment of fees for Graduate School and for teachers in service
- 31 Good Friday, Holiday
- May 15-19 Advisement Week
- 30 Memorial Day, Holiday
- June 1 Cap and Gown Day Convocation (11:30-4th period class excused)
- 3 Final examinations
- 5-9 Final examinations
- 4 Baccalaureate service, 8:00 p.m.
- 9 Commencement, 8:00 p.m.
- 10 Spring Quarter closes

Summer Session, 1961

First Term

- June 12 Orientation and registration for first term
- 13 Classes begin; fees due
- July 4 Independence Day, Holiday
- 15 First term closes

Second Term

- July 17 Registration and payment of fees for second term
- 18 Classes begin
- Aug. 17 Commencement, 8:00 p.m.
- 19 Second term closes

PTA Institute Will Be Held On Campus

The University of Minnesota, in cooperation with Minnesota Congress of Parents and Teachers, will conduct three two-day institutes on parent and family life education this month at Moorhead State College and the University's, Duluth and Minneapolis campuses.

Dates for the institutes are May 23-24, at Duluth and May 26-27, at the University's Center for continuation study on the Minneapolis campus.

Purpose of the institutes, jointly sponsored by the continuation center and the University's Institute of Child Development and Welfare, will be to acquaint PTA members with methods and materials which can be used in organizing or extending parent and family life education programs.

Armin Grams, associate professor and head of the Child Development Institute's Parent Education program, will open each institute with a discussion of "What My PTA Has Done." Elizabeth Peterson, institute instructor, will speak on the topic, "What Shall I Tell My Child About Sex?" at the final first day session.

The second day's program will open a talk by Harold W. Stevenson, director of the Child Development Institute, who will describe the institute's work in assisting PTA parent education lecture, and lead a discussion on

"Discipline" at the first afternoon session. This will be followed by a discussion of available resources in parent education programs.

Use of films and tape recordings in parent education also will be demonstrated during the institute. Films about pre-school children and adolescents will be shown at 11 a.m. on the first day of the institutes.

Science Dept. Gets Award

DULUTH—A grant of \$12,125 from the National Science Foundation has been awarded to UMD for support of the "undergraduate research participation program" in biology, chemistry and geology.

The program will be under the direction of Dr. William R. McEwen, chairman of the division of science and mathematics at UMD. It provides for 10 students to work on research projects this summer and for 12 students during the '60-'61, academic year.

This is the second NSF grant awarded to UMD, the one a year ago being for \$7,300. Four projects under that grant are still underway but will be finished by July 1st.

The purpose of the NSF "learn by doing" program is to determine the extent to which providing superior undergraduate students with an experience in research will contribute to science education. It also serves to encourage students toward advanced degrees and research work as a profession.

The students, who are paid a stipend by NSF for their work, actively participate with faculty members in an on-going research project.

Music Night Planned for May 24

The UMD Music Department will present an evening of musical entertainment on May 24 at 8:00 p.m. in Kirby Student Center. The 75-voice UMD chorus will present a program of varied musical selections from standard choral literature ranging from works of the Sixteenth Century to contemporary time. Included in their repertoire will be taken up by the one-act opera, "The Old Maid and the

Thief," by Gian-Carlos Menotti.

Menotti's opert is, according to the composer, an unpompous, frotesque opera, in which the peeople are so strongly drawn as to approach caricature. Actually a chamber opera, this work is also a double-edged satire, for in places the score seems to be poking fun at the pompousness of opera as it existed about a century ago. And throughout the work, a satirical attitude is manifested toward the behavior of the people who lived "a respectable life." "The Old Maid and the Thief" differs from traditional opera in that the majority of it is a continual

flow of conversation much like regular theatre; the music serves as an emphasis to this. There are no conversations followed by arias as in traditional opera. The style of the music tends to be almost brittle at times, because it is a sharp commentary on respectable life.

"The Ild Maid and the Thief" will be three weeks in staging before its public appearance. This amount of time is necessary because of the rhythmical complexity of the music. It would be impossible to work dramatically on the stage with this piece without a thorough knowledge of the music.

UMD Band Tours Area

The UMD Band, composed of 75 pieces, presented its spring concert at 8:15, May 12, in Kirby ballroom. The band was conducted by James R. Murphy. The concert was a climax of a two-day tour of northeastern Minnesota high schools. On Tuesday, the band performed at Cloquet high school, Moose Lake high school and Mora high school.

After an overnight stop in Brainerd, the band presented a concert at Brainerd high school, Crosby-Ironton high school and also at Aitkin high school.

Loy Kay Clemmons of Duluth performed a horn solo in "Concerto for Horn" by Ralph Hermann at the spring concert. James Bursch, Virginia, David Cran, Duluth and Donald Shove-in Duluth presented a trumpet selection, "Carnival" Variations by Jacoby-McRae. Robert E. Beverly, assistant conductor, soloed in "Concerto for Clarinet" by C. M. Weber, Op. 26.

Sit-In Movement . . .

(Continued from Page 2)

campaign of petition—singing and letterwriting, protesting segregation policies, and student expulsion cases. Another area of participation has been a drive to bring discrimination in housing to an end in the New Haven area. A dozen Yale students obtained one hundred landlords' signatures on a non-discriminatory housing pledge on one Saturday afternoon, bringing the total to over three hundred landlords who had signed this pledge. The reactions to these various efforts have been largely favorable. The press has given good coverage, and the people's comments when talking to picketing students, have been quite positive. The plans for the near future call basically for an expansion of the actions that are presently in progress, with the hope that the majority of the northern communities will also take a stand.

The number of northern colleges initiating action, both educational and demonstrative, is increasing every day. Some recent examples are Harvard University, the Universities of Colorado, Michigan, Wisconsin, and Minnesota—and even closer to home, Northland College at Ashland. So it can be seen from the example of Yale and from schools close to home, that Northerners can and do have a role to play in this most important movement of human beings against injustice.

The man who knows everything, has a lot to learn !!!

PLETS

FAIRWAY FOODS

Corner Woodland and St. Marie

OPEN 7 DAYS A WEEK

Week Days 8 - 9

Sundays 9 - 5

Phone RA 4-8525 for Delivery Service

Prom Causes Furry

By KATHIE FLECK

Soon hammers will pound, paint brushes will slap scotch tape will roll and decorators will scurry. Need you ask what all the hustle and bustle is for? Of course not, everybody knows what the excitement is about, it's the 1960 prom, "Red Hot'n Blue," sponsored by the Kirby Program Committee and the Student Association.

Young ladies are scouring the shopping areas for pretty but

yet sophisticated dresses which will help to make the evening special, for her. She is anxiously awaiting her formal invitation which will come by way of the United States mail, and finally it comes. She can now picture herself dancing on the ballroom floor to the music of the Merinotes, or sitting on second floor enjoying refreshments and the entertainment provided by UMD students or thrilling to the decorations on first floor which

will case an uneasy atmosphere.

On the other hand, the young men are taking out their suits, (which, I might add, hasn't been worn since the last prom), and checking it to see if tailor work is required, or a good pressing and whatever else is done to suits in the preparation for a big event. Maybe there are a few who are renting the all-time "favorite" dinner ackets. There will soon be a run on the barber shops and also the florist.

Yes, it's quite evident that the student body at UMD is preparing for a big event. The biggest the campus affords its students all year long, the 1960 prom.



summer's coolest convertible

ARROW Lightweight

Bi-Way \$4.25

Convertible two-way collar may be worn open or closed. Open-weave Lightweight fabric is wash and wear, "Sanforized" for lasting fit. Short sleeves for added comfort.



Plaza Flower Shop

FOR PROM . . .

CORSAGES ARTISTICALLY ARRANGED AND REASONABLY PRICED.

CALL OR COME IN.

ERNEST A JAAP
1227 E. Superior Street
RA 4-8571

STOP

AT

Floyd's & Howie's
TEXACO

FOR BEST SERVICE

1001 East Superior St.
2031 London Road

'Wonderful Town' to Be Presented Tonight, Sat.

A music-drama group composed of some 100 students and faculty members at St. Cloud State College will present "Wonderful Town" tonight and Saturday nights (May 13-14) in Duluth, under the sponsorship of the University of Minnesota, Duluth Players.

Both performances are scheduled for 8:30 p.m. in Woodland Junior High School Auditorium, according to Harold Hayes, theatre director at UMD.

Capacity crowds attended four performances of the musical comedy May 5-8, on the St. Cloud Campus. The play also will

be presented May 20-21, at the North Suburban Drama Workshop in Robbinsdale.

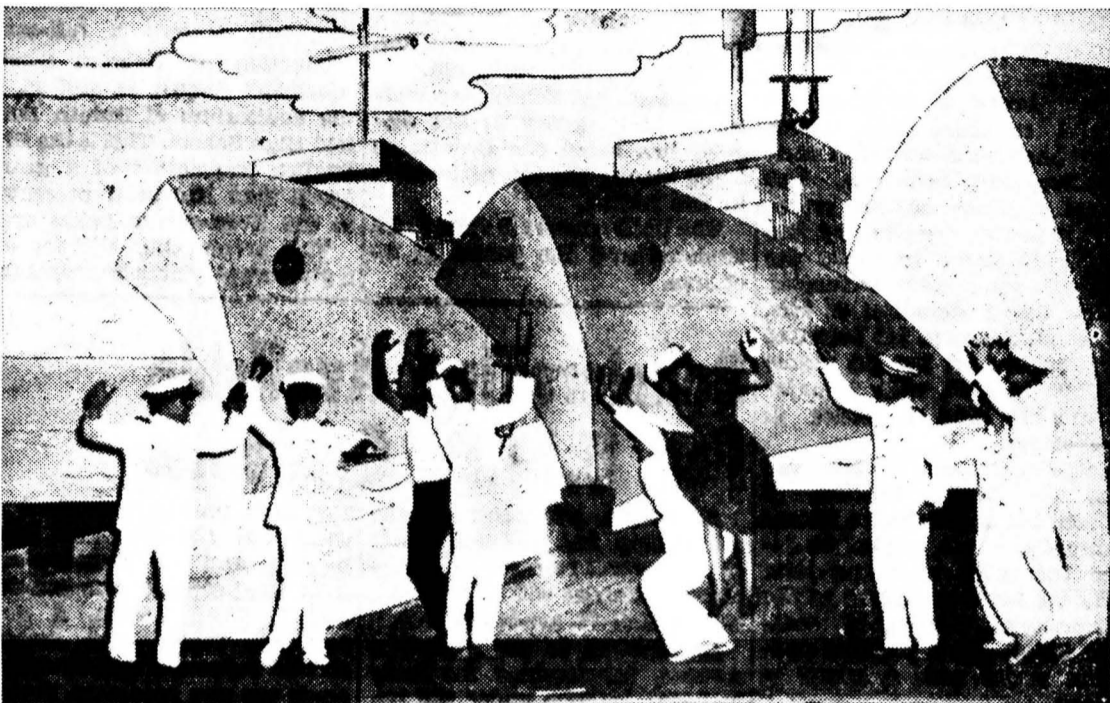
"Wonderful Town," based on the story, "My Sister Eileen," is concerned with the adventures of two midwestern girls who go to New York to pursue writing and acting careers. The plot moves rapidly as a large cast of colorful characters parade through their basement in Greenwich Village.

Leonard Bernstein wrote the music for the play, which opened on Broadway in 1956, to become one of the biggest hits on the New York Stage.

Arthur Housman is play director and Harvey Waugh is musical director. St. Cloud students from northeastern Minnesota who are in the production in-

clude: Janice Kaupp, Coleraine; Marianne Cianni and Frances Svigel, Chisholm; Emmett Stark, Hibbing, Lawrence Selisker and Lyle Steffenson, Brainerd; and

Jarold Swedberg, Aitkin. "Wonderful Town" will be free to all UMD students by on presentation of activity cards. Curtain time is 8:30 p.m.



Loan Fund Formed

The Kappa Chapter of Delta Kappa Gamma, society composed of women in the education profession, has added to its service to professional teacher education by establishing the Bruno P. Pitula Memorial Loan Fund. This fund has been established by the Pitula family and friends. Mr. Pitula was the father of Mrs. Edward Cowles, wife of a UMD faculty member.

UMD students to be eligible for loan assistance must be

young women in teacher education who are full-time undergraduate students and have attended on the Duluth campus for a minimum of two quarters. They must have a 3.0 grade point average in their major fields and a 2.5 grade point average in all work taken. Need is an essential factor. Applications can be made in the Office of the Director, Student Personnel Services, where further details are available.



A Beatnik is
A Scrambled
Egghead.

T.G.I.F.
AT
Embers
FRIDAY

For Prom Corsages
**PETERSON-ANDERSON
FLOWERS**
331 West Superior Street
Phone Orders
RA 2-0888

SAMMY'S PIZZA PALACE
Downtown Duluth - Lakeside - West Duluth
RA 7-8551 JA 5-5000 MA 4-1802
WE DELIVER ORDERS OF SIX OR MORE PIZZAS

STARTS FRIDAY, MAY 13th
Burt Lancaster - Dorothy Hepburn
in
"THE UNFORGIVEN" - Technicolor

STARTS FRIDAY, MAY 20th
JOSHUA LOGAN'S
Super-saucy
production
of
tall story
that college
girl who
can't
help lovin'
Tall boys!..

starring
anthony Perkins and Jane fonda
NORSHOR Theatre

WHY
more men wear
McGREGOR
Drizzler than
any other
jacket

as worn by
BILLY CASPER, JR.
U.S. OPEN GOLF CHAMPION

as advertised in
LIFE

• Double protection shoulder yoke • Cool breather holes under arms • Extra-roomy back pleats • Deep-cut pivot armholes • Special hip and sleeve elastics • Corded water-tight pockets • Drizzler cloth of 60% rayon, 40% cotton that's washable and showerproof • Fresh 1960 colors

\$10.95

The BIG DULUTH
222 West Superior Street

Folk Dancers Perform A Variety of Dances

Former UMD students Bob and Carlyn Galati, billed as "the European Folk Dancers," will perform at 2:30 p.m., May 19, in the UMD Physical Education Building.

Each dance is presented in colorful costumes with music which has been recorded in various European countries. The dances of many nations represent constant research by the Galatis in order to make the numbers completely authentic.

Mrs. Galati, daughter of Mrs. Esther M. Johnson, 345 Leicester Ave., Duluth, got her BA degree at UMD in 1950, with a major in music and a minor in psychology.

Bob Galati, son of Mr. and Mrs. Vito Galati, formerly of Duluth, but now living in Sacramento, California, got his BS degree the same year and later earned a Master's degree at the University's Minneapolis campus. Galati was a physical education major with a minor in biology.

The Galatis were married shortly after graduation from UMD. For four years, Galati taught in elementary schools in Oregon and Washington. Following work on the M.S. degree, the Galati's began making occasion-

Science Grant . . .

(Continued from Page 12)

During the summer and next year, student will work with the following faculty members on various projects: James Nichol, Edward Cowles, Moses Passer, Henry Lepp, T. O. Odlaug, H. C. Chiang, Walter Fluegel, Edward Flaccus, and P. B. Hofslund.

Any undergraduate college student, whether he attends UMD or not, may apply for participation in the NSF program at UMD. All interested students should contact Dr. McEwen's office.

McEwen attended the meeting of all NSF program directors May 6, in Chicago. At that time, financial aspects, research connected problems and values of the program were discussed.

al appearances as a dance team and have been at it since, traveling to more than 2,000 schools, colleges, men's and women's clubs. They have a daughter, Nikki Lynn, two years old.

The National School Assemblies booking agency in Los Angeles has rated the Galatis as being among the top performers in the nation.

The UMD concert is open to all students and the public at no charge.

The Duluth Symphony to Present Bizet's 'Carmen'

The Duluth Symphony Orchestra conductor, Hermann Herz, reported that the association will present a full-scale production of Georges Bizet's "Carmen" August 24 and 26, in the auditorium of Duluth Denfeld High School. This is the first English translation of a grand opera that has been presented in the Head-of-the-Lakes area. This presentation will feature a glamorous, young Metropolitan

Opera Company prima donna, professional costumes and scenery. In addition to the leading lady, the cast will include three operatic stars, two of whom are members of the New York City Center Opera Company; six other principal singers, two Lakehead area vocalists and four Chicago professionals; a five-member ballet group from Chicago, featuring a ballerina who is a former member of the world famous Soddler-Wells Ballet Company; 12 area children; and a 35 to 40-voice local chorus. The cast, excluding the 42 member orchestra, will number more than 60. Auditions are being held now to select chorus members.

is "very acceptable to the public," said conductor Herz, who noted that there are, however, few acceptable translations. The conductor explained that this particular translation of "Carmen," which was originally written in French is "brand-new," and the work of "the foremost translators of opera into English in America today," Ruth and Thomas Martin.

Herz noted that "Carmen" is performed more often than any other stage work, and "the greatest box office draw of any opera. The story of "Carmen" is one of love, passion and conflict, which accounts for its perpetual appeal, and the music is one of those strokes of genius that happens only once in a great composer's lifetime."

There is a great movement today to do opera in English, which

Scholarships Available For U.M.D. Graduates

About nine hundred Fulbright scholarship for graduate study or predoctoral research in 30 different countries will be available for the 1961-62, academic year.

In addition to the Fulbright Awards, scholarships for study in Latin America under the Inter-American Cultural Convention are also offered for 1961-62.

Applications for both the Fulbright and IACC Awards will be available on May 20, the Institute of International Education announced today. IIE administers both of these student programs for the U.S. Department of State.

The Fulbright scholarships cover travel, tuition, books and maintenance for one academic year.

General eligibility requirements for both categories of awards are: 1. U. S. citizenship at time of application, 2, a bachelor's degree or its equivalent, 3. Knowledge of the language of

the host country sufficient to carry out the proposed study project and to communicate with the people of the country, and 4. Good health. A good academic record and demonstrated capacity for independent study are also necessary. Preference is given to applicants under 35 years of age who have not previously lived or studied abroad.

Applicants will be required to submit a plan of proposed study that can be carried out profitably within the year abroad. Those who plan to take dependents may be asked to submit a statement of their financial ability to provide for their round-trip transportation and maintenance.

Applications for Fulbright and IACC scholarships for 1961-62, will be accepted until November 1, 1960. Requests for applications must be postmarked before October 15.

Outing Club Plans Canoe Trip In May

The UMD Outing Club is planning a canoe trip for sometime in May. The route will lie from Ely to the Superior-Quantic Forest, through areas of superb scenic beauty. There will be more details later as to the cost.

All those interested in this trip are invited to come to a meeting on May 13 at 7:00 p.m. in Room 252, Kirby Student Center. A color film of a 700-mile canoe trip to Hudson Bay will be shown.

All those that cannot attend this meeting but are interested in the canoe trip are asked to leave their names at the Kirby desk, or to get in touch with

Kirk Ransom, RA 4-9992.

This promises to be a very interesting and worthwhile trip for all those interested and able to participate, and students are urged to attend the meeting.

In the May 6 issue of the STATESMAN, a cartoon depicting student interest was printed on the editorial page. Due to a printer's error, "World Campus," national student newspaper, was not given credit for the cartoon. We wish to thank them for letting us reprint the cartoon.

ROTC Queen Takes First Flight

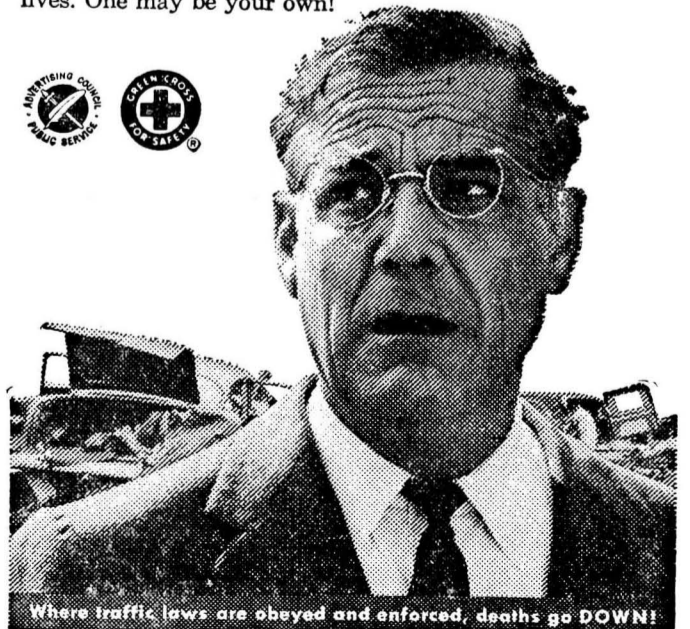


Sandy Johnson, ROTC queen, prepares to take her first airplane ride. She is receiving instructions from Capt. Robert Almond and Cadet Ray Erickson.

"... and I was worrying about being late!"

On the road, think only about

your driving! When everything seems to depend on making time, remember this. Many of the 37,000 people killed in traffic accidents last year were putting time before safety when death put an end to both for them. 3 out of 10 such fatal accidents involved speeding drivers. So stop worrying about saving minutes; think about driving to save lives. One may be your own!



Where traffic laws are obeyed and enforced, deaths go DOWN!

Published in an effort to save lives, in cooperation with the National Safety Council and The Advertising Council.

**BERMUDA DAY
MAY 18**

**Every one wear
their bermudas.**

**BOWLING
IS FUN**

OPEN BOWLING

All Day and Evenings
Saturday and Sunday.
Weekdays to 5:00 p.m.

**Duluth Bowling
Center, Inc.**

30 North 3rd Avenue West

FOR ATMOSPHERE

AND

GOOD FOOD

AFTER THE PROM

PIEKWIETEK

CHARCOAL BROILED FOOD

508 E. Superior St.

RA 7-1746

Chances Are . . .

Why? Why must a guy have to call up a girl three weeks in advance for a dance. (A UMD rock hop called the prom.)
 A guy asked, "Can I have a date with you two weeks from now—you know the prom type dance—"
 The girl answers, "Gosh, I'm sorry (but you do neatly) but I'm all booked up until October 28, but I'm free between 3 and 7 a.m. on May 21 but I have to be in by 7:30 'cause I got a date with your fraternity brother then—say, I do have a friend."—(Guy, if smart, at this point quietly hangs up.)
 But if you want the last word with a woman—apologize. I'm sorry.
 * * *
 A female is one who can hurry through a drug store aisle 18 inches wide without brushing against the piled-up tinware and then drive home and knock the door off a 15-foot garage.
 * * *
 Women rule a certain tribe of Indians in Peru, which indicated that American civilization is spreading.
 * * *
 Men have many faults; women have but two:
 There's nothing good they say, and nothing right they do!
 * * *
 Byron had the right idea when he said, "What a strange thing is man and what a stranger thing is woman!"
 * * *
 Golf not only improves your general health but enables you to understand the jokes in the weekly funnies.
 * * *
 Spring . . . when a young man's fancy turns to what the girls have been thinking about all winter.
 * * *
 Scientists insist the sun is going to last another 15,000,000,000 years. What, then, is the idea of all this daylight saving?
 * * *
 Girls ought not smoke . . . pipes.
 We're too lazy to work, and too nervous to steel!!
 * * *
 He who gets lost in thought is probably in unfamiliar territory.
 * * *
 The man who says there are no new jokes probably hasn't attended some of my lecture classes.
 * * *
 Woman's talk, like the little brook, goes on forever; but the little brook gets somewhere in the end.
 But then again the woman gets her man.
 * * *
 Thanks to M. Sue.P. fan a new word for my vocabulary: Popaholics: Girl who don't and won't Drink
 * * *
 They say every day in Europe is Pan America Day.
 * * *
 They talk about apathy on campus, no interest in government, etc. Hell, if someone took the time and trouble to "juggle" the ballots, they must be interested in campus government.
 * * *
 No book burning at UMD—only ballot burning. Cha-cha-cha!

Degree Mills Deceiving; Miss Represent Facts

So-called "degree mills" have been found to be in operation in nine states, as revealed by investigations by Secretary of Health, Education and Welfare Arthur Flemming. The investigation began last October when Secretary Flemming announced that he would "compile and make public a list of alleged educational institutions whose activities are questionable because they purport to grant educational degrees without requiring the usual academic performance."

"These institutions," said Flemming, "undermine the reputation of American education at home and abroad and create hostility toward this country on the part of their overseas victims." They also work an injustice on the individuals who are deceived.

The department has thus far uncovered 20 such institutions currently active in the United States and 11 active abroad. They offer a variety of degrees at prices ranging from donations to \$500. One degree mill accepts a "free will offering" as its price for any of six degrees.

Facilities range from no buildings or volumes in the library to 14 buildings, laboratories and 10,000 library volumes.

Many are "religiously" oriented, with such names as the Church of Lighty in Los Angeles and the Kondora Theosophical Seminary in Chicago, which reports to "prepare workers for the religion of modern spiritualism."

Other institutions listed as degree mills are: Institute of Metaphysics in Birmingham, Alabama; Burton College and Seminary in Manitou Springs, Colorado. (This particular institution states that it "provides courses for busy pastors and Christian leaders through the Extra-Mural method."); The Divine Science Church and College in Denver, Colorado; American Bible School in Pineland, Florida; American Bible School, The College of Universal Truth

(which offers a Doctorate in Universal Truth for \$350); McKinley-Roosevelt, Inc., and Washington National University in Chicago; Pioneer Theological Seminary in Rockford, Illinois; University Extension Conservatory; Central School of Religion, College of Divine Metaphysics, and Trinity College in Indianapolis, Indiana; Midwestern University in Arcadia, Missouri, offering doctorates in Maturopathy, Chiropractic, Maturatrice and Homeopathy; Neotarian Fellowship in Kansas City, Missouri;

Four States Cooperative University in Jefferson, Texas; Texas Theological University in Fort Worth; and Belin Memorial University in Manassas, Virginia.

Secretary Flemming now plans to hold a conference with representatives from the Department of Justice and State, the Office of the Postmaster General, the Federal Trade Commission and appropriate non-governmental agencies to "re-examine whatever federal powers are available to cope with the evils inherent in degree mill operations."

IS THIS SPRING AT LAST?



U.S. Steel Grants Aid For Better Education

The United States Steel Foundation, Inc. has begun a \$2-677,000 program of aid to education with grants to 710 liberal arts colleges, universities and institutes and to 27 organizations devoted to elevating educational quality in America, announced Roger M. Blough, Chairman of the Board of Trustees of the Foundation.

"As formulated by the Trustees of the Foundation," said Mr. Blough, "the program is directed toward specific efforts for the improvement of educational quality and toward encouraging all segments of the public to increase their support of the nation's educational facilities. Particular stress is laid upon stimulating colleges to attract their alumni into long-term support plane through an annual Alumni Incentive Awards Competition open to every institution of higher education in America. Continued support is provided for the state and regional liberal arts college associations which enlist business and other donors to aid the colleges financially. To provide additional opportunities for advanced academic development of competent students, a substantial expansion of graduate-study Fellowships is authorized."

The program includes \$780,000 in operating grants. Aid is afforded to all 438 accredited four-year institutional members of all the 41 state and regional liberal arts college associations. In addition, \$43,000 of operating aid goes to Negro colleges, including all members of the United Negro College Fund.

United States Steel Foundation Trustees anticipate that the recipient institutions will apply most of the unrestricted operating funds thus made available to all these different institutions to faculty and staff salary needs or for improved administration. For the first time a grant has been made to the Associated Colleges of the Midwest, a group of ten colleges. Also a first-time grant is made to assist in teaching blind students by use of tape and other recording devices.

Under consideration for later action by Trustees are grants in support of scientific research in the inter-related areas of polar regions, oceanography, and the earth's crust, and to major scientific organizations. No additional 1960 grants in the field of education are contemplated, and formal notification will be given to all participants in the program during May.

**ORIENTATION GROUP LEADERS
 TRAINING SESSIONS**
 May 10 - 3:30 to 5:00
 May 12 - 7:30 to 9:00
 May 17 - 3:30 to 9:00
 KIRBY CAFE 250

The LONDON INN

- Shakes 19c
- Grilled Cheese 19c
- Cheeseburgers 24c
- French Fries 15c
- Pop, Milk, Coffee 10c

Complete Dinner - 53¢
 (Hamburger, Shake, French Fries)



BEAUTIFUL
 CORSAGES
**JERONIMUS
 FLORAL**

11 East Superior St.

RA 2-7789

Duluth, Minnesota

Varsity Grid Scrimmage "Spotty" Says Malosky

By PETE SHEAN

Defense work was the chief emphasis of the second week of spring football drills at UMD. However, following the hour game-type scrimmage last Saturday, grid coach Jim Malosky also had his charges smoothing out all phases of the game.

Malosky was fairly satisfied with the performance last Saturday. Speaking about that session, he stated, "There were some bright spots, although for the most part, the play was spotty. The teams were not consistent. They had periods of good and average play, but there were too many below-par periods. The squads didn't function as units, but considering the little contact work they had up to Saturday, we probably expected too much."

* * *
LINEBACKING STANDS OUT
* * *

In the scrimmage, won by the 'Whites' four touchdowns to one, the linebacking looked particularly good, while the line play was also pleasing to Malosky.

According to the young coach, nothing happened that wasn't expected. The play of the veter-

ans stood out, bearing out the fact that there is no substitute for experience. "As far as experience is concerned, we are a lot better off now than we have been since I've coached here," offered Malosky.

Although Malosky has only 14 upperclassmen in his lineup, his building program is beginning to show fruit. The former Gopher quarterback's big problem will be keeping his upperclassmen healthy. To date, two gridgers have missed practice, resulting from injuries suffered last week. But Malosky expects guard, Kent Salo and end, Bill Bort, both members of the number one 'white' unit, to be practicing this week. No practice is scheduled for tomorrow. Instead, a scrimmage was held yesterday at 3:45 on the UMD field. Next week the Varsity will be tuning up for the Alumni game on May 21.

In the scrimmage last weekend, the 'white' squad braved a cold wind from the north, as they started on their own 30-yard line and moved the ball 50 yards to the 'maroon' 20 before losing possession of the ball. The pigskin then changed hands

twice, as the 'whites' moved 70 yards for the first score. Freshman right halfback Joe Schoffman from Edina went over from the three for the 'whites'.

The second 'white' score came on a mixture of plays, mostly a series of power plays by 200-pound John Drazenovich of Nashauk. Drazenovich scored from the six-yard line.

The lone 'maroon' score came on a three-yard buck by big Bob Visina.

The 'whites' took over and proceeded to move down to the 'maroon' three on a number of long gains around the ends by halfbacks Rusty Gilchrist and Dick Pesonen. Finally, Gary Raasch of Morris, Minn., culminated the drive, going around his own right end for the tally.

Pesonen highlighted the fray with the final 'white' touchdown, a 75-yard run. The co-captain from Proctor went off his right tackle, found blocking, and glided the rest of the way untouched.

Two other bright spots were a long run by Gary Raasch, halted just short of the goal, and a zig-zagging 35-yard pass interception play by sophomore Jerry Richardson.



ALUMNI FOOTBALL COACHES JOHN VUCINOVICH AND DICK OFRBERT, right, get together at UMD to map their strategy for the May 21 Varsity-Grad tilt. Forbert will be a player-coach and will assist head coaches Vucinovich and Stan Mickolajak of Duluth.



'MAROON VS. WHITE,' is exemplified here, as the two units of UMD's varsity grid squad lined up against each other in last week's inter-squad scrimmage. The 'Whites' outscored the 'Maroons,' 24 to 6 in the hour-long game-type scrimmage.

INTRAMURALS

SOFTBALL

ROTC-8Beta Phi Kappa-10
Cotton Pickers-0Gamma Theta Phi-0

BADMINTON

Singles—Charles Andresen, Don Will, and John Haigh
(all in tournament semi-finals)
Doubles—Jacobson & Andresen
Ahlgren & Whelihan (all in semi-finals)
Will & Haigh

MIXED VOLLEYBALL

1. Team IV	3 & 0	Won-Lost
2. P. E. Faculty	2 & 1	
3. Team II	1 & 2	
4. Team III	0 & 3	

MIXED BADMINTON

1. Lee & Gum	1 & 0	Won-Lost
2. Myrhe & Young	1 & 0	
3. Powell & Pease	0 & 1	
4. Haigh & Haigh	0 & 1	
5. Wells & Hedrick	0 & 0	
6. Arnold & Kelly	0 & 0	

Tickets On Sale

Tickets to the 2nd Annual UMD Alumni-Varsity football game are being mailed this week to more than 350 graduates, "M" Club President Tom Martin, announced this week.

Martin said that each letterman graduate from UMD and the former Duluth State will receive four tickets for the game which will be at 2 p.m. on Saturday, May 21, at UMD.

All revenue from the \$1.00 tickets will go to the students' Stadium Fund Drive.

Martin said that tickets have been on sale since May 11, at Kirby Student Center, the UMD athletic office, Tri-State Sports and Kelley-Duluth Hardware.

This project has been endorsed by the Letterman's Club board and the graduate 'M' Club board.

About one thousand portable seats will be erected for the game next week, the UMD News Service announced this week.

Halftime entertainment is expected from the UMD marching band, providing weather conditions are desirable.

To date, the UMD Stadium Fund Drive has netted about \$20,000.

UMD Sweeps Track Meet, Loses Martin

THE TRACK SQUAD JUMPED INTO THE WINNER'S CIRCLE in a big way last Friday afternoon, as UMD swamped Superior State and Northland College in a triangular meet on UMD's field. Ralph Neuses' cindermen totaled 109 points, allowing only 40½ points between the other two teams.

A stiff wind and cool temperatures failed to harness the Bulldogs, as they copped a first place in all but two events: the high hurdles and shot put.

An inter-squad time trial held last Tuesday at UMD preceded the Bemidji Invitational meet which will be today at Bemidji State Teachers College.

The Bulldogs' week had only one dark note, as it was learned that 440 runner Tom Martin would be lost for the remainder of the season with a broken ankle.

* * *
Johnson, Ahlin spark meet victory.
* * *

Again Elman Johnson and John Ahlin provided the big punch. Johnson, the Bemidji transfer, dominated the high jump, broad jump and discus. He also took fourth in the shot put.

Johnson tossed the discus 132 feet, jumped 6 feet, and went 20 feet 9½ inches in the broad jump.

Ahlin, of Marshall, Minnesota, finished first ahead of teammate Tim Burgess in the 100 and 220 yard dashes with times of 10.3 and 22.7 seconds.

A sparse, standing crowd shivered through the affair, as UMD also won eight other first places. Harold Knutson won the half-mile with a time of 2:06.8.

Junior, Ray Mickolajak of Duluth, captured the mile in 4:38. He was followed by Bulldogs Norm Gill, Ted Eckman and Dave Johnson. Gill later won the two-mile run in 11:03.6. This time it was Mickolajak in the runner-up spot.

Steve Paun and Bruce Johnson, football halfbacks, took first and second in the low hurdles, respectively. Johnson was third in the 120-yard high hurdles.

The remaining win was achieved by Gene Spalding of UMD, who won first place in the pole vault with a jump of 11 feet.