

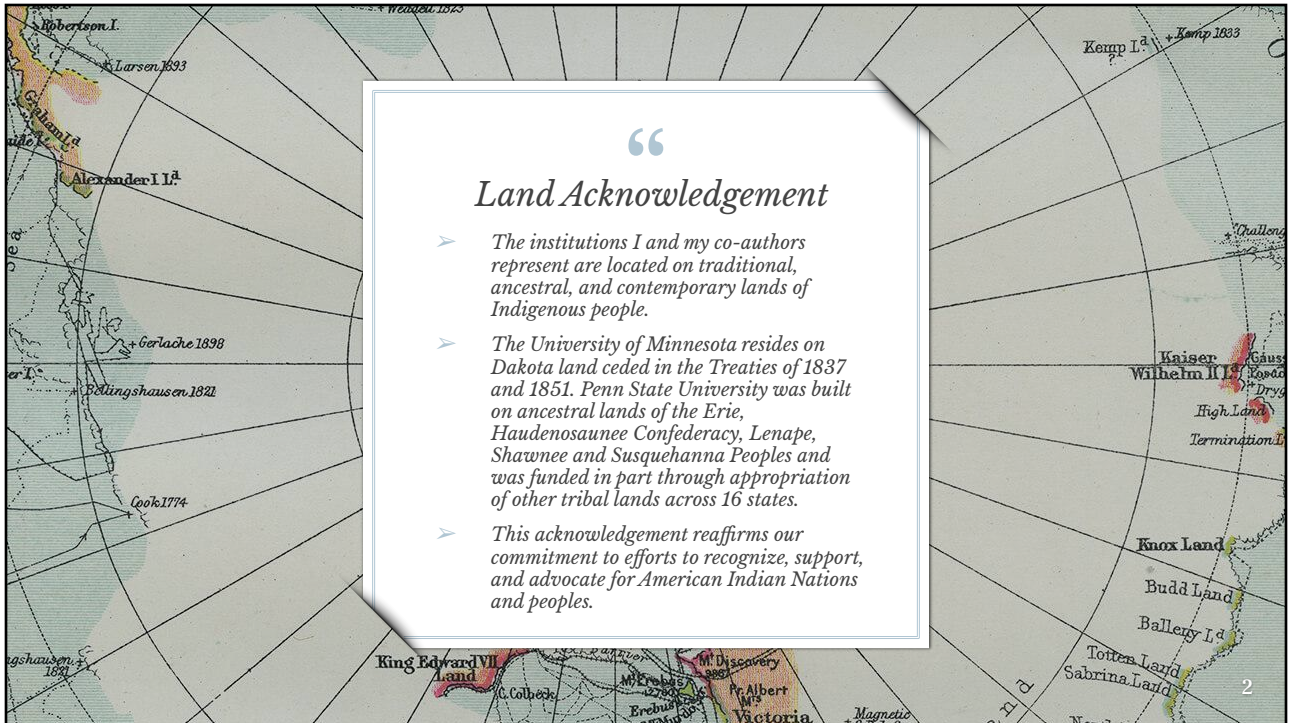
Mapping the Past:

Inside the LC Geography and Map Division
Special Map Processing Project, 1951-2006

Laura Kane McElfresh¹, Paige Andrew², Linda Musser³

WAML Conference 2020
Thursday, 15 October

¹mcelf008@umn.edu, University of Minnesota; ²pga2@psu.edu, Penn State University; ³lrm4@psu.edu, Penn State University



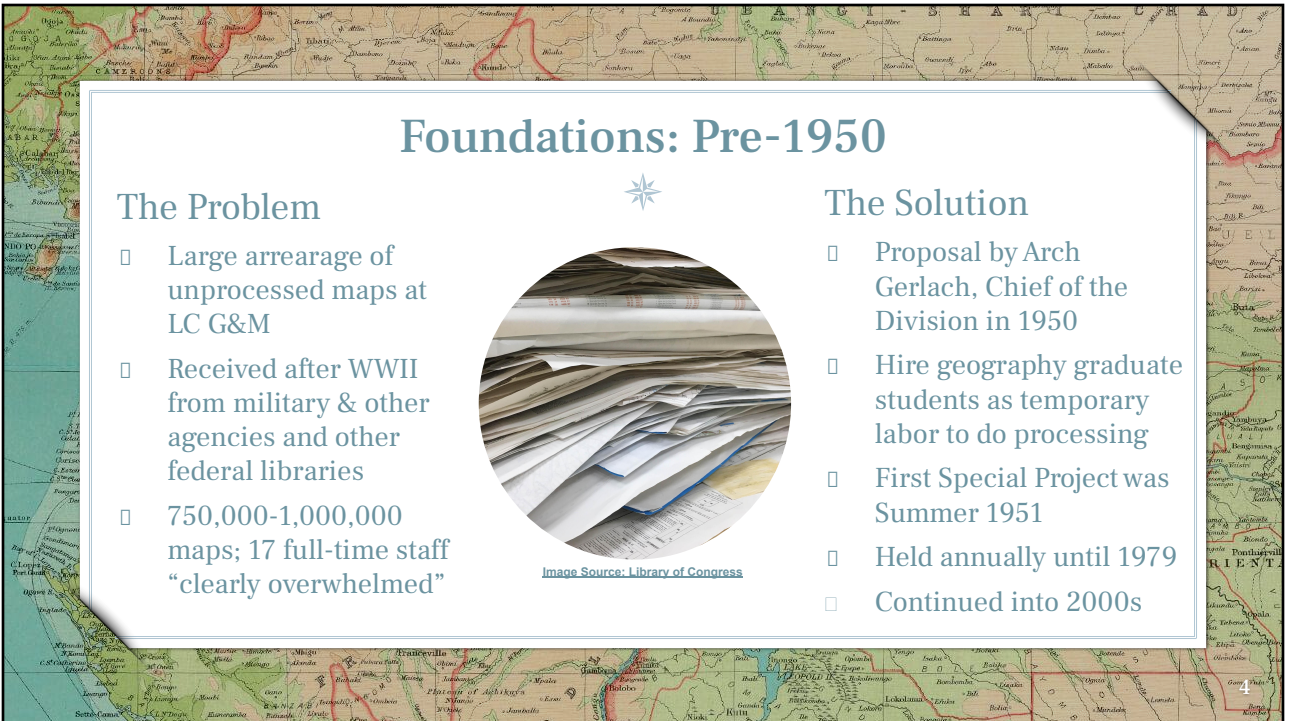
“

Land Acknowledgement

- The institutions I and my co-authors represent are located on traditional, ancestral, and contemporary lands of Indigenous people.
- The University of Minnesota resides on Dakota land ceded in the Treaties of 1837 and 1851. Penn State University was built on ancestral lands of the Erie, Haudenosaunee Confederacy, Lenape, Shawnee and Susquehanna Peoples and was funded in part through appropriation of other tribal lands across 16 states.
- This acknowledgement reaffirms our commitment to efforts to recognize, support, and advocate for American Indian Nations and peoples.



Early Years: The 1950s & 60s



Foundations: Pre-1950

The Problem

- ❑ Large arrearage of unprocessed maps at LC G&M
- ❑ Received after WWII from military & other agencies and other federal libraries
- ❑ 750,000-1,000,000 maps; 17 full-time staff "clearly overwhelmed"



[Image Source: Library of Congress](#)

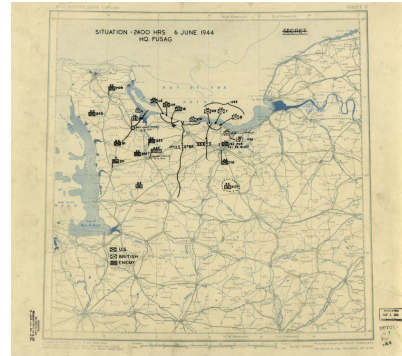
The Solution

- ❑ Proposal by Arch Gerlach, Chief of the Division in 1950
- ❑ Hire geography graduate students as temporary labor to do processing
- ❑ First Special Project was Summer 1951
- ❑ Held annually until 1979
- ❑ Continued into 2000s

The Beginning: 1951

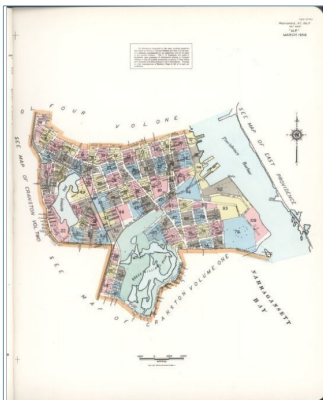


- Eight graduate students, paid by LC
- Four co-op participants
 - Columbia University
 - University of Illinois
 - University of Wisconsin
 - American Geographical Society of New York
- 90 days: accessioning, indexing, filing
- 7004 duplicates stockpiled for distribution



[Image Source: Library of Congress](#)

Cooperative Participants: Who, What, and Why?



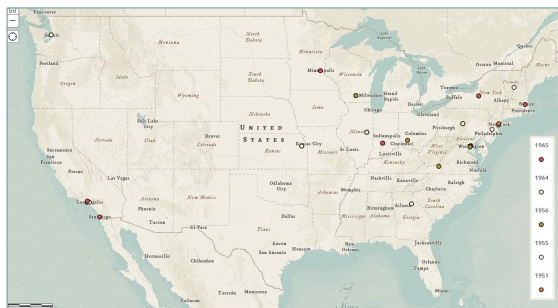
[Image Source: Library of Congress](#)

- Qualified librarians, faculty members, or students
- Project members train/work with permanent LC G&M staff
 - Technical processing
 - Bibliographic and reference services
- Participants gain valuable training, experience, and contacts
- Maps, charts, and atlases selected from stock of available duplicates
- Sponsoring institutions pay:
 - Participants' expenses (salaries, transportation, housing)
 - Shipping costs for duplicate exchange materials

Early Scope and Coverage

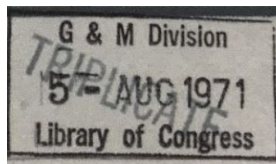


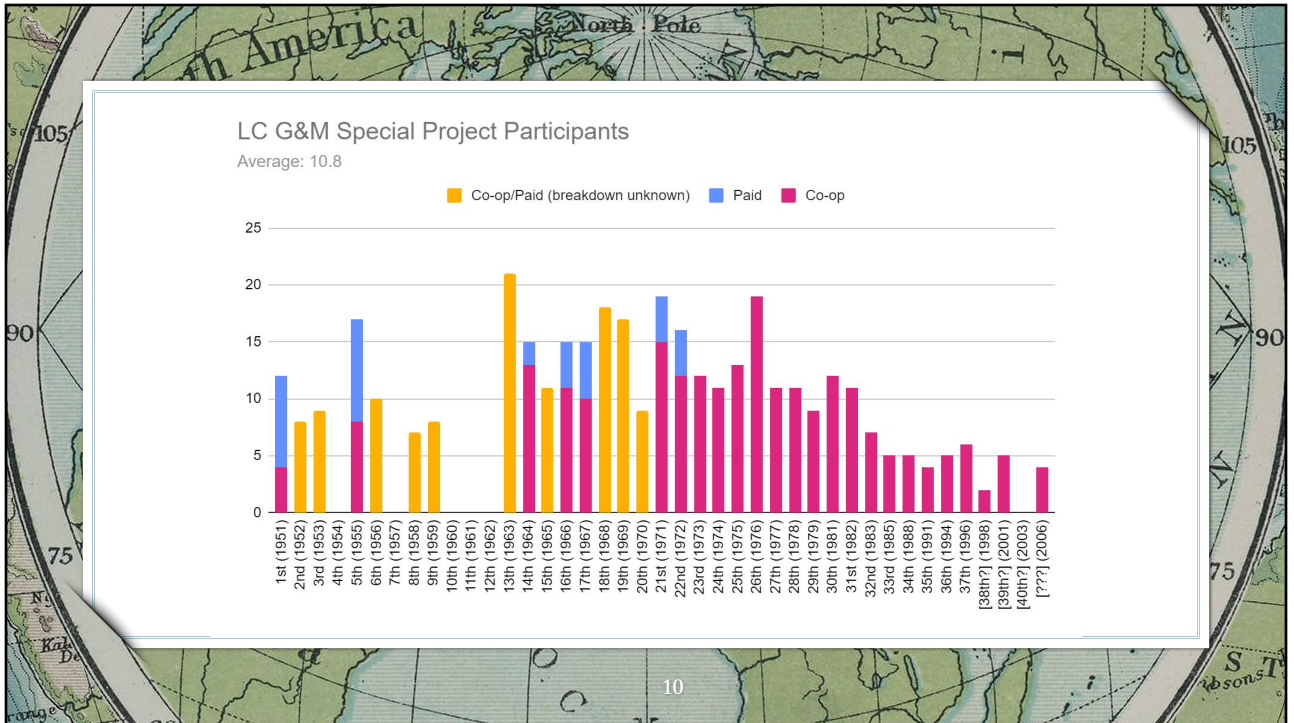
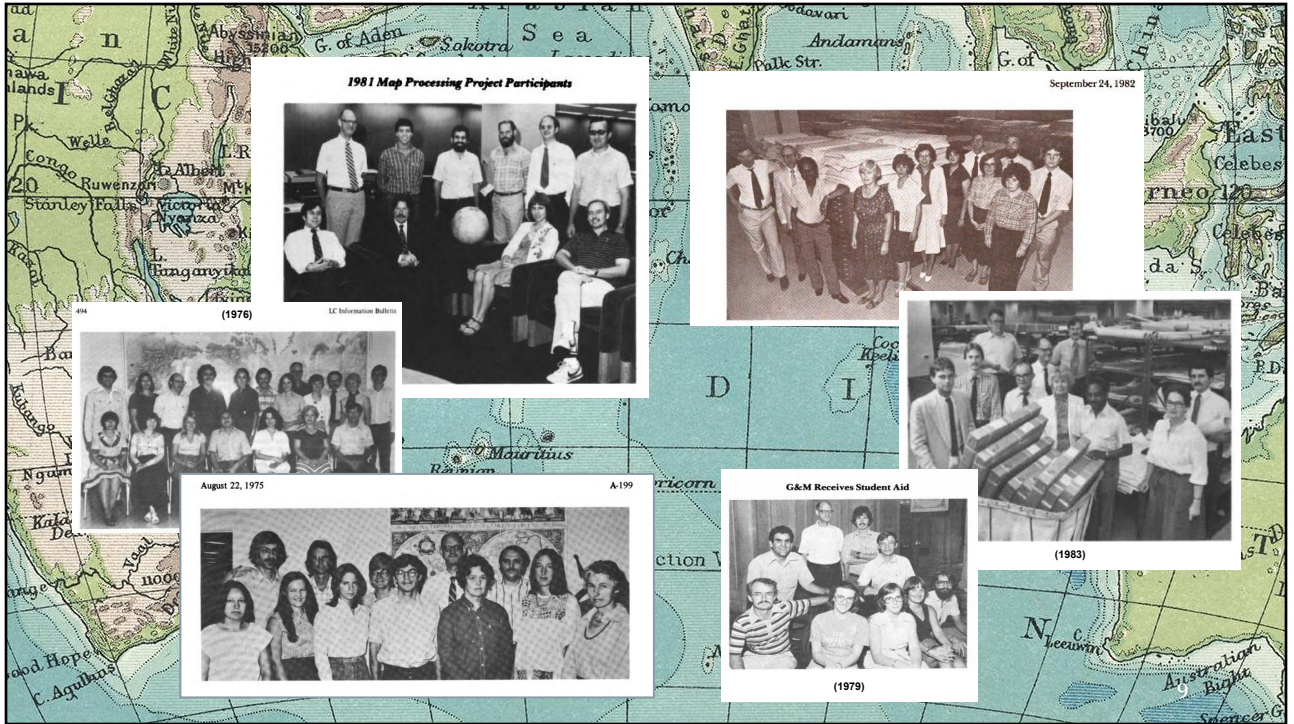
- Average 12 participants per year
 - Mostly East Coast & Midwestern institutions
 - About 16% from DC area
 - Washington & Southern California too
- Mostly graduate students
 - Some librarians and faculty
- LC-supported, cooperative, or combination
- Focus on processing, sorting, filing

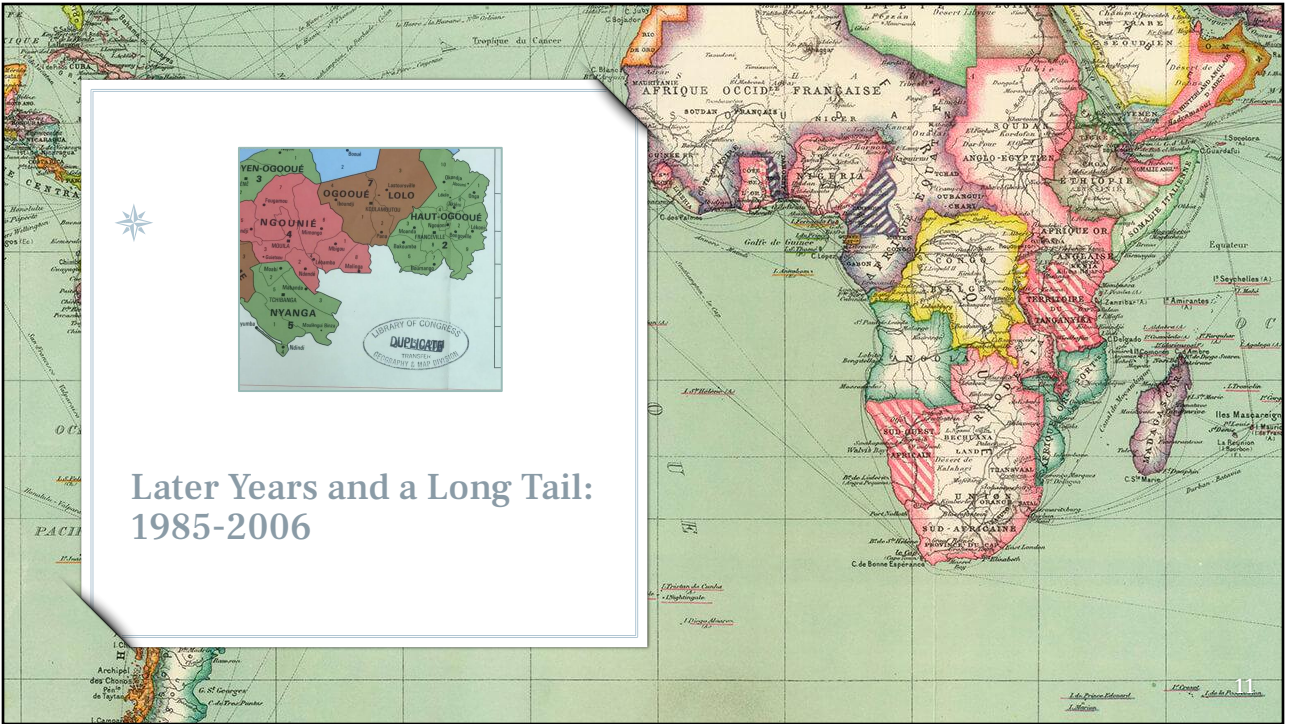


Co-Op Participants' Home Institutions, 1951-1965 (incomplete)

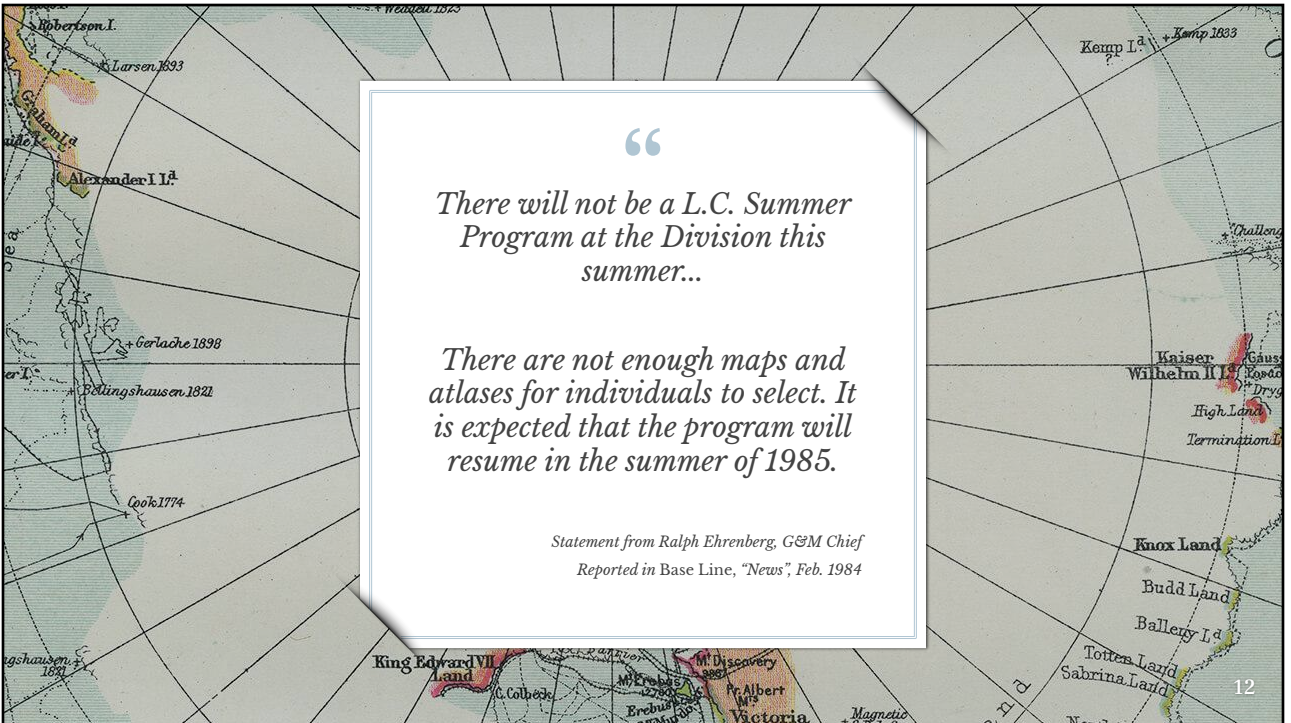
Middle Years: 1970-1983







Later Years and a Long Tail:
1985-2006

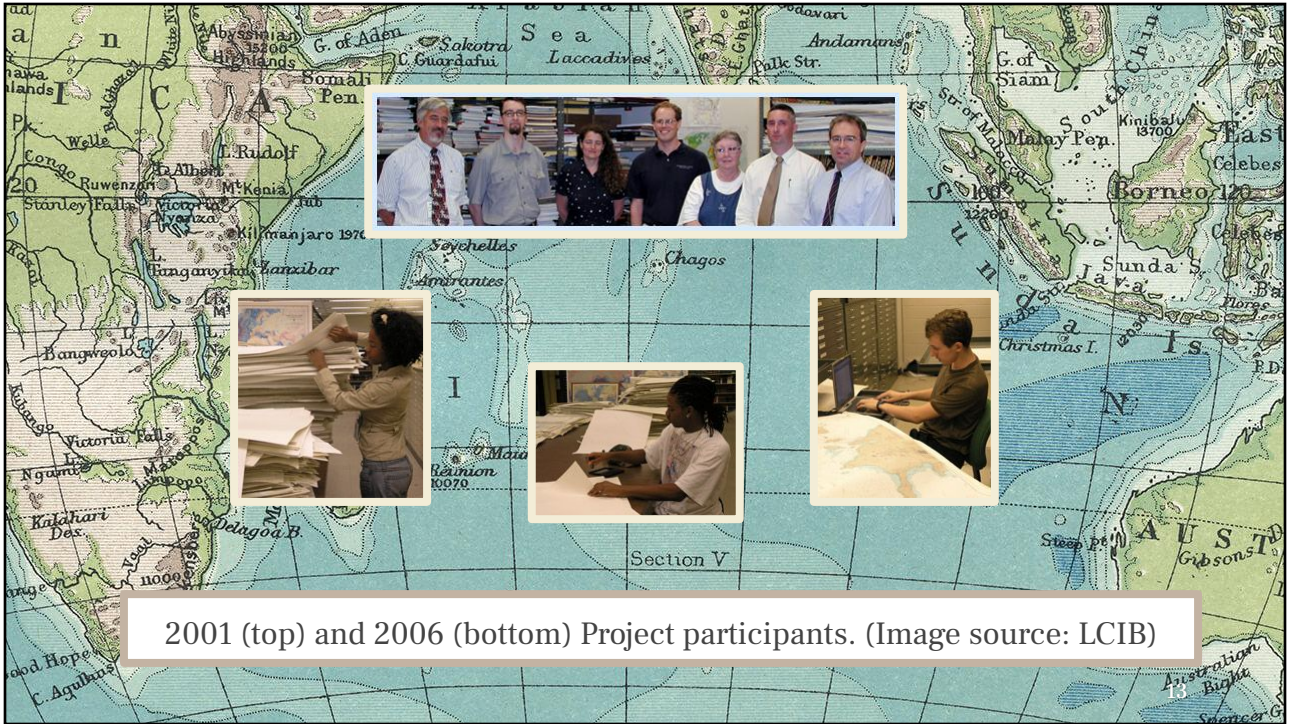


“

There will not be a L.C. Summer Program at the Division this summer...

There are not enough maps and atlases for individuals to select. It is expected that the program will resume in the summer of 1985.

Statement from Ralph Ehrenberg, G&M Chief
Reported in Base Line, "News", Feb. 1984





ICC 2017
@ICC2017DC

Library of Congress - Geography and Map Division Tour
by Ed Redmond! #ICC2017dc #Maps @librarycongress
@LOCMaps



12:20 PM - Jul 6, 2017 - Twitter for iPhone



Two Million Maps

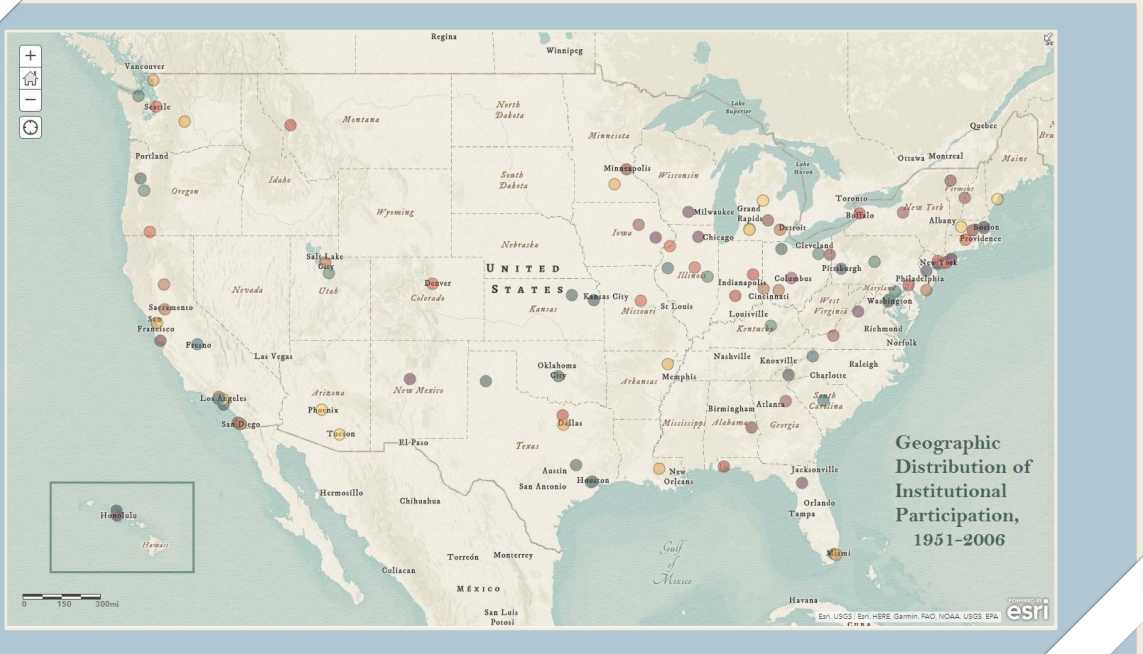
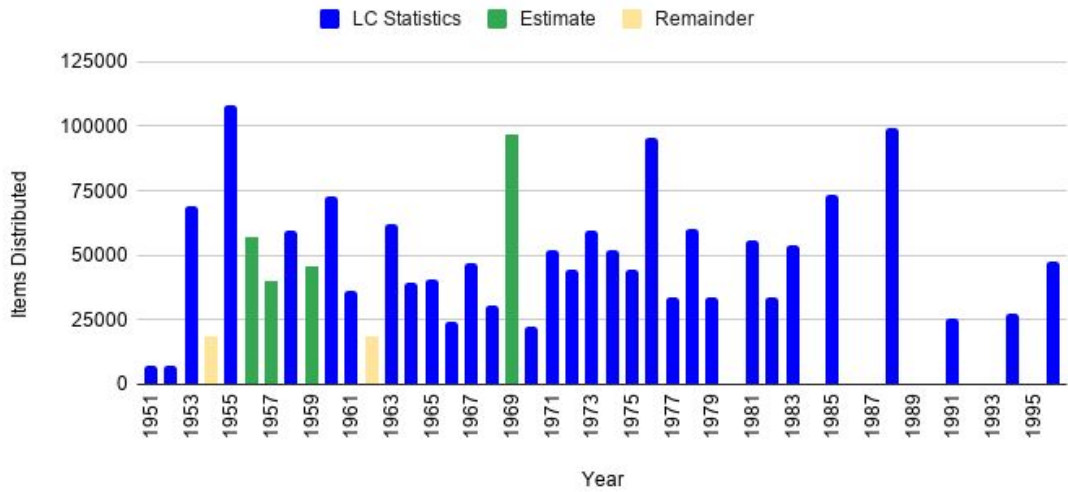


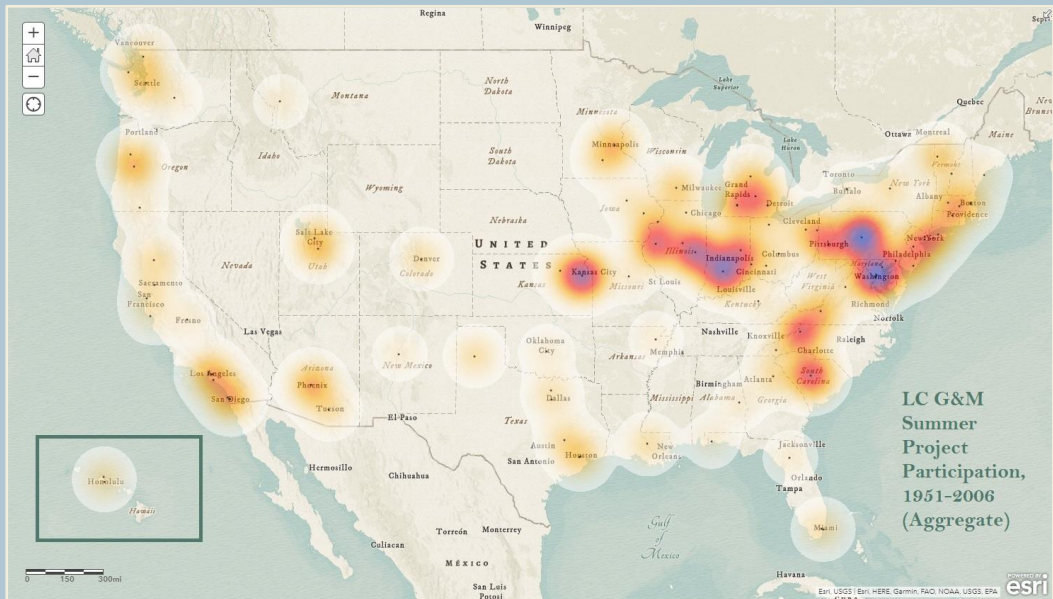
- Average items per participant per year: 5702
 - Typical "large" share ~ 20,000
 - 69,540 (U. Maryland, 1988)
 - 586 (Appalachian State, 1983)
 - 18 globes in 1974, 6 to U. Illinois
- Participants had 4 hours per week to select items




Image Source: "Summer Map Project Completed", *Library of Congress Information Bulletin*, September 24, 1982.

Duplicate Maps, Charts, and Atlases Distributed (1951-1996)







We welcome additional information about the LC Summer Project. Please contact us if you have:



- photos
- reports to home institution
- records of maps selected

Project participants, please contact us if you are willing to be interviewed.



Contact Us!



We welcome your feedback and contributions.

We will publish the results of our research in the *Journal of Map & Geography Libraries*, in the first part of 2021.

Laura Kane McElfresh
University of Minnesota
mcelf008@umn.edu

Paige Andrew
Penn State University
pga2@psu.edu

Linda Musser
Penn State University
lrn4@psu.edu