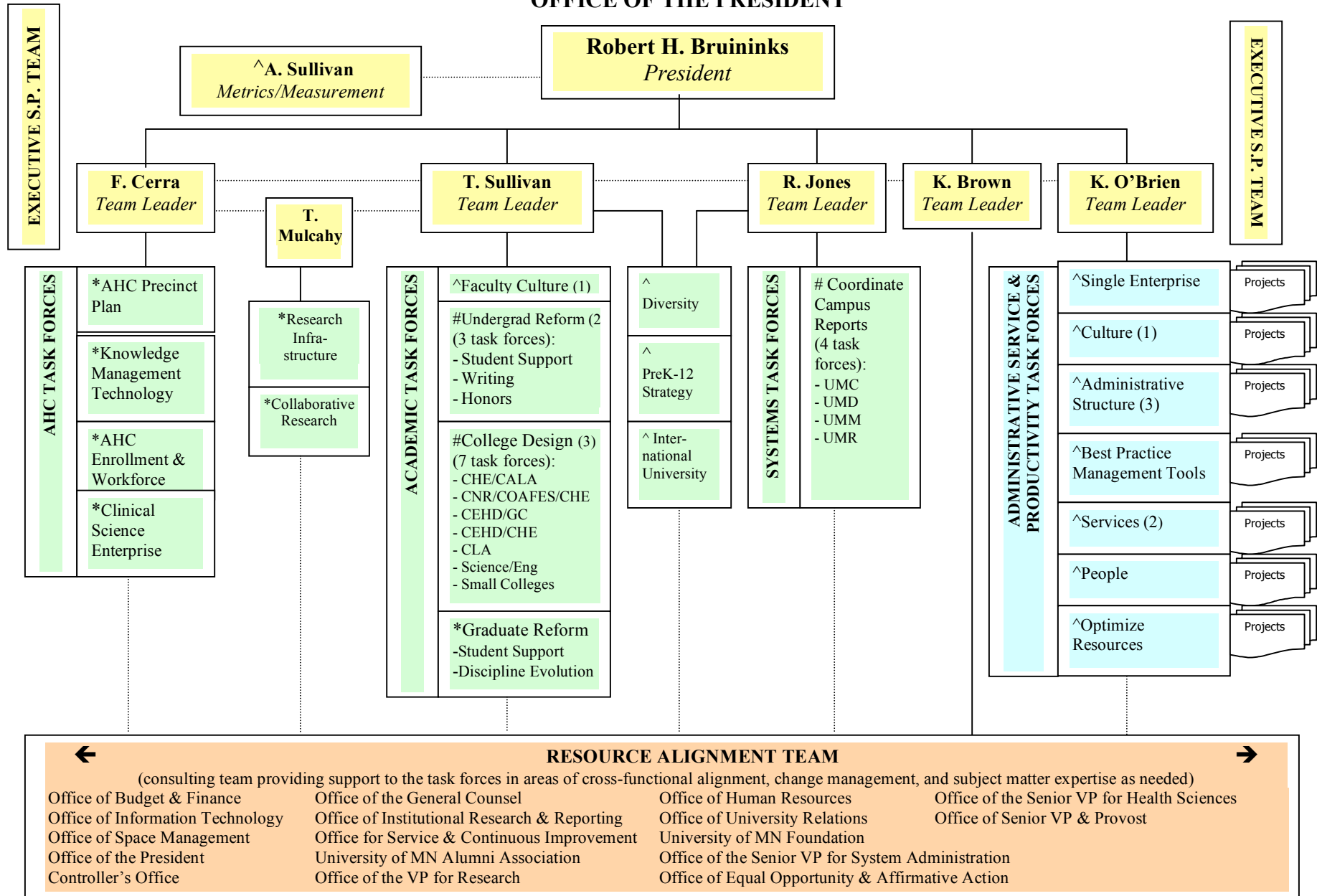


Strategic Positioning Task Force Implementation Structure OFFICE OF THE PRESIDENT



1= Faculty and Administrative Culture task forces to coordinate with one another.
 2 = Undergraduate Reform and Services task forces to coordinate with one another.
 3 = Administrative Structure and College Design task forces to coordinate with one another.

^ System-wide
 * TC plus relevant units
 # Campus Specific

August 15, 2005

1= Faculty and Administrative Culture task forces to coordinate with one another.
2 = Undergraduate Reform and Services task forces to coordinate with one another.
3 = Administrative Structure and College Design task forces to coordinate with one another.

<p>^ System-wide * TC plus relevant units # Campus Specific</p>

August 15, 2005