

# Rates of Intra-University Transfer for General College Students

Annual report

July 2003

General College Office of Research and Evaluation

This report presents intra-university transfer rates (i.e. transfer to other academic programs on the Twin Cities campus) for General College Freshman cohorts from 1995 to 2001. Freshman cohorts are comprised of all Fall New High School (NHS) admit students who were registered full or part-time at the end of the second week of their first Fall term. Transfer rates for cohorts prior to 1995 can be found at [http://www.gen.umn.edu/research/institutional/recent\\_transfer.html](http://www.gen.umn.edu/research/institutional/recent_transfer.html).

Due to the University's conversion from a quarter to a semester-based system as of the 1999/2000 academic year, and the fact that this report contains transfer outcomes for both quarter and semester cohorts, there are some things to note about the data contained herein: In past strictly quarter system transfer reports, transfer by 1-year after entry was a common checkpoint; however, this checkpoint is no longer adequate since the transfer timeline for the semester-based cohorts is different from that of quarter-based cohorts. Under the quarter system, students could complete the minimum transfer requirements after their first Fall and Winter quarters, submit a transfer application during Spring quarter, and effectively transfer to another unit the following Fall term. Under the semester system, this progression has been delayed; if students wish to transfer by their second Fall term they must still file their application in Spring, but as of their first Spring term, they will not have enough coursework completed to meet minimum transfer requirements. Therefore, the 1-year transfer rate has drastically declined for semester-based cohorts, and thus no longer appears to be a suitable benchmark. In this report, transfer rates are reported in whole and partial year time increments, and cross cohort comparisons are made using 1.5-year transfer rates (rather than 1-year transfer rates). Whole and partial year transfer rates are calculated as follows:

	whole year transfer rates (i.e. 1-year, 2-years, etc.) reflect:	partial year transfer rates (i.e. 1.5-years, 2.5-years, etc) reflect:
quarter-based cohorts (Fall 1998 and earlier)	transfer by 2nd (1-year transfer), 3rd (2-year transfer), etc. Fall term	transfer by 2nd (1.5-year transfer), 3rd (2.5-year transfer), etc. Winter/Spring term
semester-based cohorts (Fall 1999 and later)		transfer by 2nd (1.5-year transfer), 3rd (2.5-year transfer), etc. Spring term

While perusing this report, (especially when making cross cohort comparisons) the reader should keep in mind how semester conversion has impacted GC transfer outcomes.

## Report Contents:

[Overall Transfer Rates](#)

[Transfer Rates by AAR](#)

[Transfer Rates by Ethnic Background](#)

[Transfer Rates by High School Location](#)

[Pre-Post Transfer GPA](#)

## General College Freshman Cohort Transfer Rates Within the University of Minnesota

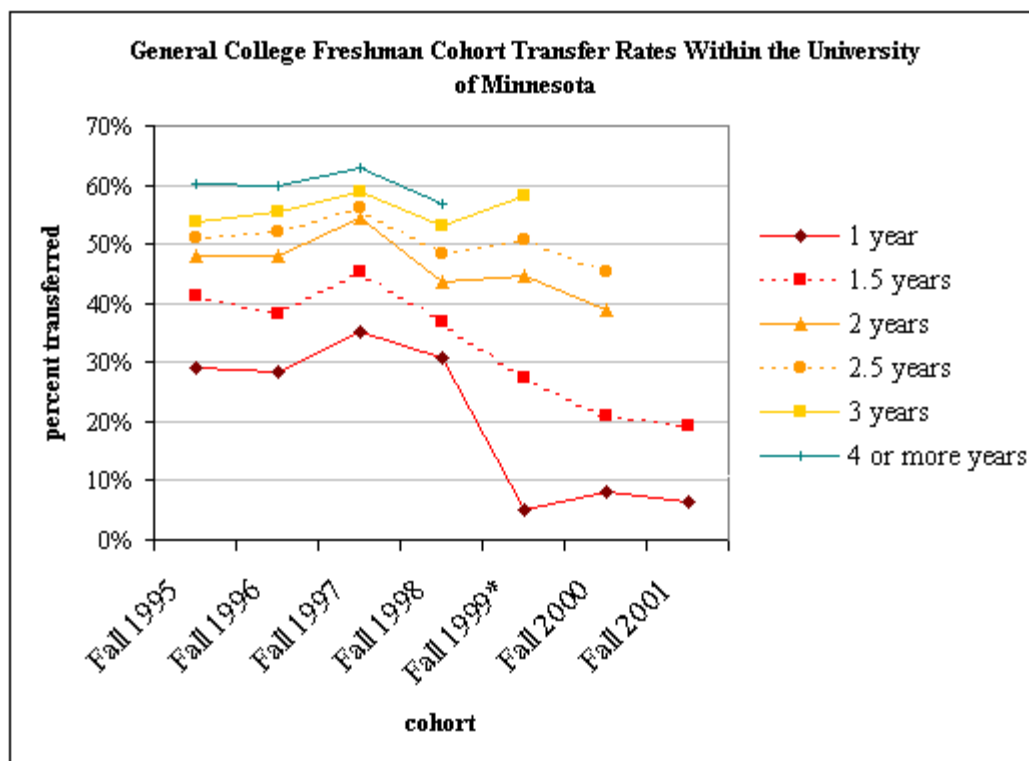
	<b>Transferred within:</b>					
<b>Cohort</b>	1 year		1.5 years		2 years	
	<i>N</i>	%	<i>N</i>	%	<i>N</i>	%
<b>Fall 1995</b>	233	29.1%	331	41.3%	386	48.2%
<b>Fall 1996</b>	236	28.3%	320	38.4%	400	48.0%
<b>Fall 1997</b>	332	35.0%	428	45.1%	517	54.5%
<b>Fall 1998</b>	299	30.8%	357	36.8%	423	43.6%
<b>Fall 1999*</b>	46	5.0%	252	27.5%	410	44.8%
<b>Fall 2000</b>	74	8.0%	195	21.0%	363	39.0%
<b>Fall 2001</b>	58	6.5%	172	19.4%		

	<b>Transferred within:</b>							
<b>Cohort</b>	2.5 years		3 years		3.5 years		4 or more years	
	<i>N</i>	%	<i>N</i>	%	<i>N</i>	%	<i>N</i>	%
<b>Fall 1995</b>	410	51.2%	432	53.9%	444	55.4%	482	60.1%
<b>Fall 1996</b>	434	52.1%	464	55.7%	472	56.7%	499	59.8%
<b>Fall 1997</b>	533	56.2%	559	58.9%	577	60.8%	595	62.8%
<b>Fall 1998</b>	471	48.5%	514	52.9%	527	54.3%	553	57.0%
<b>Fall 1999*</b>	465	50.8%	533	58.2%	547	59.7%		
<b>Fall 2000</b>	422	45.4%						

\* Throughout the report, the first semester-based cohort is marked with an asterisk.

At 1.5 years after entry, the transfer rate for the Fall 1999 cohort lags behind previous cohorts' transfer rates. However, by 2-years after entry, the Fall 1999 cohort transfer rates are more commensurate with previous cohorts' transfer rates. Transfer rates continue to decline for Fall 2000 and 2001 cohorts; 1.5 year transfer rates for these cohorts are lower than previous cohorts' 1.5 year transfer rates and by two years after entry, transfer rates for these cohorts still lag behind previous cohorts. Under the semester system, 1 year transfer rates are still below 10%. Based upon registration records thus far for Fall 2003, the projected 2-year transfer rate for the Fall 2001 cohort is approximately 39%, which is the same as last year's projected 2-year transfer rate for the 2000 cohort.



Proportion of Non-Transferred Students Who Were Still Enrolled in the 2002-2003 Academic Year

Cohort	Total number not transferred	% retained 2002-2003
Fall 1995	320	<1.0%
Fall 1996	336	2.7
Fall 1997	353	2.3
Fall 1998	418	4.3
Fall 1999*	369	12.7
Fall 2000	429	27.0
Fall 2001	544	66.9

Programs Into Which General College Students Have Transferred

Academic program	Cohort									
	Fall 1997		Fall 1998		Fall 1999*		Fall 2000		Fall 2001	
	N	%	N	%	N	%	N	%	N	%
Carlson School of Management	6	1.0%	5	.9%	3	.5%	5	1.0%	4	1.2%
School of Dentistry	0	--	0	--	0	--	4	.8%	1	.3%
Dental Hygiene Program	0	--	0	.2%	0	--	0	--	0	--
Col of Educ/Human Development	15	2.5%	20	3.6%	34	6.2%	26	5.2%	11	3.2%
Institute of Technology	11	1.8%	11	2.0%	20	3.7%	13	2.6%	8	2.3%
College of Biological Sciences	1	.2%	1	.2%	6	1.1%	6	1.2%	4	1.2%
Medical School	0	--	0	--	1	.2%	2	.4%	0	--
School of Nursing	0	--	0	--	3	.5%	3	.6%	5	1.5%
College of Liberal Arts	490	82.4%	450	81.4%	368	67.4%	357	71.4%	257	74.9%

Coll of Continuing Education	18	3.0%	23	4.2%	26	4.8%	15	3.0%	4	1.2%
Col of Arch & Landscape Arch	1	.2%	0	--	8	1.5%	7	1.4%	4	1.2%
Col of Agri, Food & Envrn Sci	23	3.9%	11	2.0%	28	5.1%	22	4.4%	11	3.2%
College Natural Resources	5	.8%	6	1.1%	9	1.6%	8	1.6%	3	.9%
College of Human Ecology	25	4.2%	25	4.5%	40	7.3%	31	6.2%	31	9.0%
Multi-Institution Undergrad	0	--	0	--	0	--	1	.2%	0	--

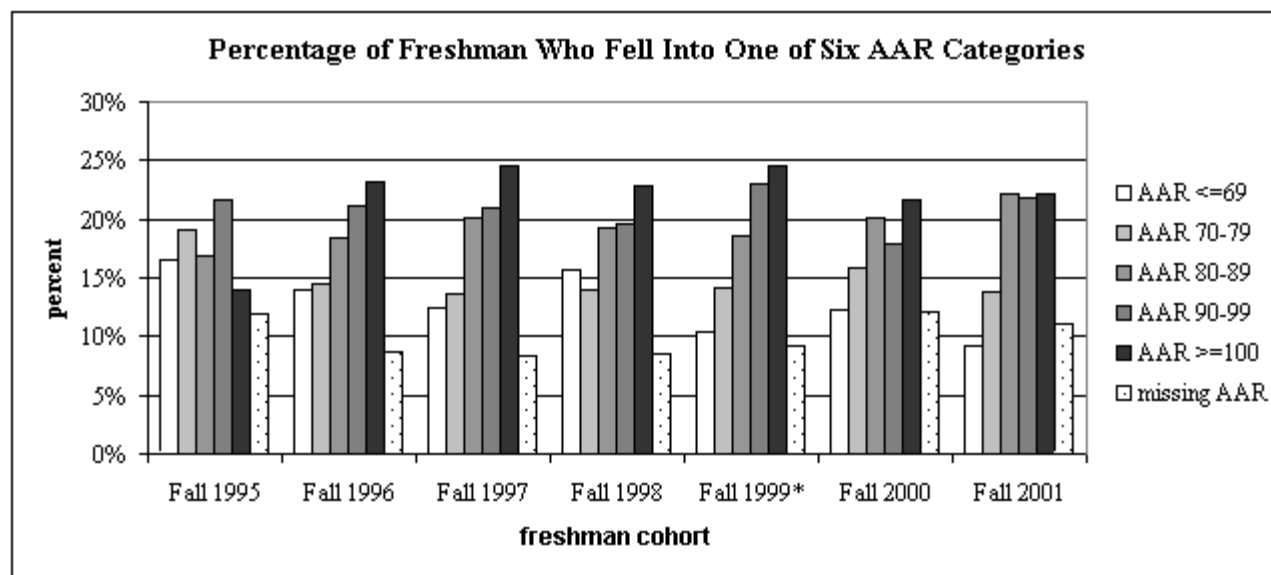
Major Areas in First Transfer Term (declared major or pre-major) for GC Transfer Students

Major area	Cohort									
	Fall 1997		Fall 1998		Fall 1999		Fall 2000		Fall 2001	
	<i>N</i>	%	<i>N</i>	%	<i>N</i>	%	<i>N</i>	%	<i>N</i>	%
Architecture/Interior Design	12	2.0%	22	4.0%	17	3.1%	17	3.4%	5	1.5%
Biological/Natural Sciences (agriculture, biology, geology)	33	5.5%	31	5.6%	33	6.0%	31	6.2%	14	4.1%
Business (e.g. management, marketing, economics)	101	17.0%	62	11.2%	43	7.9%	43	8.6%	23	6.7%
Communication (e.g. journalism, mass communication)	52	8.7%	49	8.9%	57	10.4%	55	11.0%	42	12.2%
Computer Science	22	3.7%	19	3.4%	11	2.0%	8	1.6%	0	--
Education	28	4.7%	38	6.9%	18	3.3%	11	2.2%	6	1.7%
Fine Arts/Design	31	5.2%	20	3.6%	30	5.5%	23	4.6%	13	3.8%
Hard Sciences (e.g. chemistry, physics, engineering, math)	21	3.5%	21	3.8%	15	2.7%	19	3.8%	3	.9%
Health Sciences (e.g. nursing, pharmacy, nutrition)	43	7.2%	29	5.2%	8	1.5%	14	2.8%	10	2.9%
Humanities (e.g. English, foreign language)	59	9.9%	56	10.1%	62	11.4%	35	7.0%	15	4.4%
Other (e.g. University College, Individual Study)	33	5.5%	31	5.6%	50	9.2%	30	6.0%	20	5.8%
Social Sciences (e.g. psychology, sociology, human ecology)	93	15.6%	109	19.7%	127	23.3%	88	17.6%	32	9.3%
Sport Studies/Kinesiology	17	2.9%	13	2.4%	13	2.4%	12	2.4%	3	.9%
Undecided/Undeclared	50	8.4%	53	9.6%	62	11.4%	114	22.8%	157	45.8%

II

**Transfer Rates by AAR**

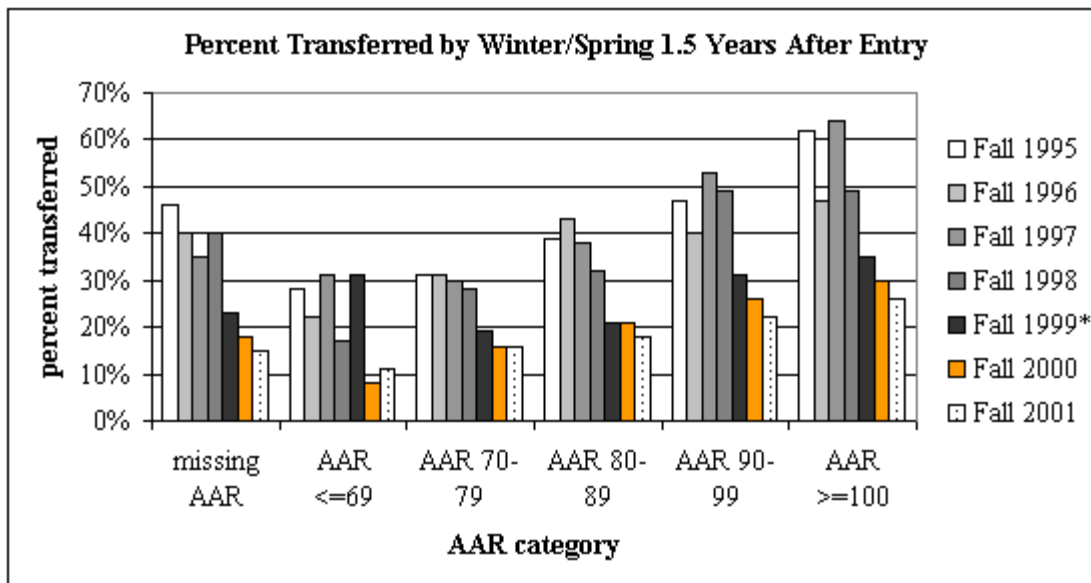
Distribution of AAR for Freshman Cohorts



### 1.5 Year Transfer Rates by AAR

Cohort	statistic	AAR Category:					
		<=69	70-79	80-89	90-99	>=100	missing AAR
Fall 1995	Total N	133	153	135	173	112	96
	<b>% transfer</b>	<b>28%</b>	<b>31%</b>	<b>39%</b>	<b>47%</b>	<b>62%</b>	<b>46%</b>
	N transfer	37	48	52	81	69	44
Fall 1996	Total N	117	121	154	177	194	72
	<b>% transfer</b>	<b>22%</b>	<b>31%</b>	<b>43%</b>	<b>40%</b>	<b>47%</b>	<b>40%</b>
	N transfer	26	38	66	70	91	29
Fall 1997	Total N	118	129	191	198	233	79
	<b>% transfer</b>	<b>31%</b>	<b>29%</b>	<b>38%</b>	<b>53%</b>	<b>64%</b>	<b>35%</b>
	N transfer	36	38	72	105	149	28
Fall 1998	Total N	153	135	187	191	222	83
	<b>% transfer</b>	<b>17%</b>	<b>28%</b>	<b>32%</b>	<b>49%</b>	<b>49%</b>	<b>40%</b>
	N transfer	26	38	59	93	108	33
Fall 1999*	Total N	96	130	170	211	225	84
	<b>% transfer</b>	<b>31%</b>	<b>19%</b>	<b>21%</b>	<b>31%</b>	<b>35%</b>	<b>23%</b>
	N transfer	30	25	35	65	78	19
Fall 2000	Total N	114	148	187	167	200	113
	<b>% transfer</b>	<b>8%</b>	<b>16%</b>	<b>26%</b>	<b>18%</b>	<b>30%</b>	<b>18%</b>
	N transfer	9	24	39	43	60	20
	Total N						

<b>Fall 2001</b>		114	148	187	167	210	113
	<b>% transfer</b>	<b>11%</b>	<b>16%</b>	<b>18%</b>	<b>22%</b>	<b>26%</b>	<b>15%</b>
	N transfer	9	19	36	43	50	15



III

**Transfer Rates by Ethnic Background**

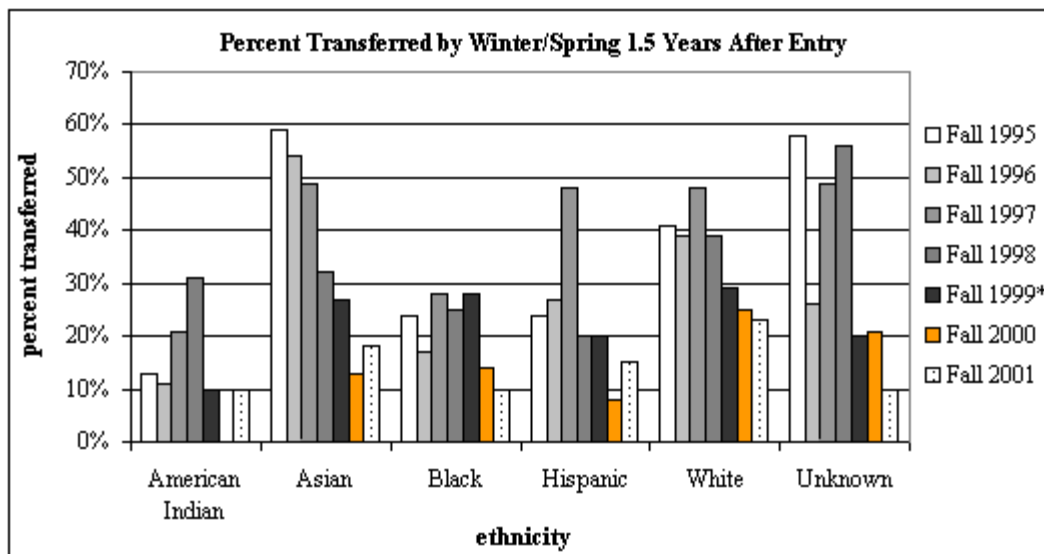
Distribution of Ethnic Background for Freshman Cohorts

Ethnic group	Cohort											
	Fall 1996		Fall 1997		Fall 1998		Fall 1999*		Fall 2000		Fall 2001	
	N	%	N	%	N	%	N	%	N	%	N	%
American Indian	18	2.2%	14	1.5%	13	1.3%	20	2.2%	8	.9%	10	1.1%
Asian	107	12.8%	108	11.4%	111	11.4%	137	15.0%	136	14.6%	137	15.4%
Black	70	8.4%	108	11.4%	95	9.8%	101	11.0%	111	11.9%	126	14.2%
Hispanic	26	3.1%	31	3.3%	50	5.1%	30	3.3%	25	2.7%	34	3.8%
International	5	0.6%	5	0.5%	5	0.5%	0	--	0	--	0	--
Unknown	23	2.8%	39	4.1%	36	3.7%	40	4.4%	29	3.1%	20	2.3%
White	586	70.2%	643	67.8%	661	68.1%	587	64.2%	620	66.7%	560	63.1%

1.5 Year Transfer Rates by Ethnic Group

Ethnicity	Cohort						
	Fall 1995	Fall 1996	Fall 1997	Fall 1998	Fall 1999*	Fall 2000	Fall 2001
American Indian	13%	11%	21%	31%	10%	0%	10%

Asian	59%	54%	49%	32%	27%	13%	18%
Black	24%	17%	28%	25%	28%	14%	10%
Hispanic	24%	27%	48%	20%	20%	8%	15%
White	41%	39%	48%	39%	29%	25%	23%
Unknown	58%	26%	49%	56%	20%	21%	10%



IV

**Transfer Rates by High School Location**

High schools from which students graduated were categorized into 10 locality categories as follows:

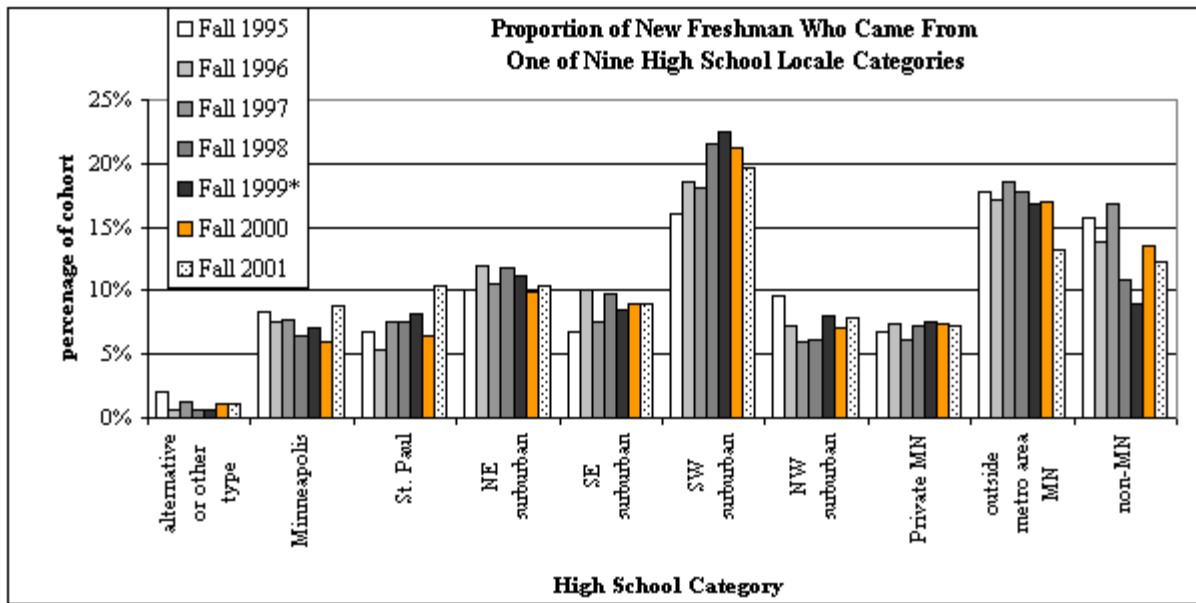
**High school locale:**

- Minneapolis
- St. Paul
- Northeast suburban
- Southeast suburban
- Southwest suburban
- Northwest suburban
- Private-MN
- Outside metro-area MN
- Non-MN
- Alternative/other type

**comprised of:**

- Minneapolis public high schools
- St. Paul public high schools
- public high schools north of 394/94 and east of the Mississippi river
- public high schools south of 394/94 and east of 35W
- public high schools south of 394/94 and west of 35W
- public high schools north of 394/94 and west of the Mississippi river
- any private high school in Minnesota
- any public Minnesota high school outside the Twin Cities metro area
- any non-Minnesota high school, including foreign high schools
- Minnesota alternative high schools or GED (including non-MN GEDs)

Distribution of High School Locale for Freshman Cohorts

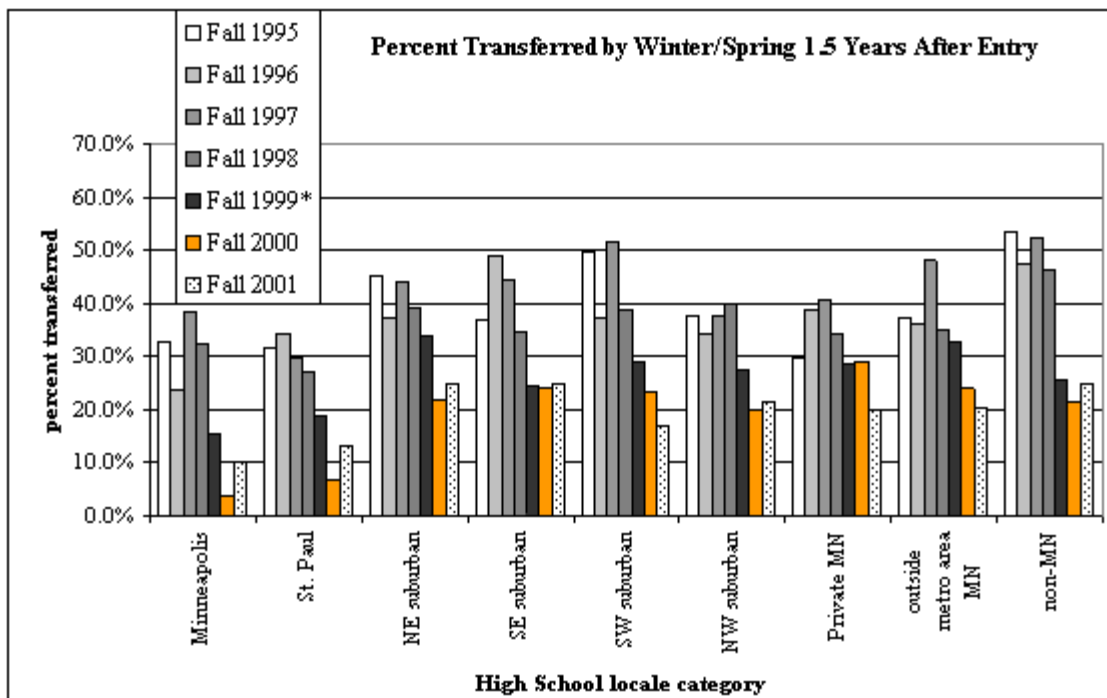


1.5 Year Transfer Rates by High School Location

High school locale	Cohort						
	Fall 1995	Fall 1996	Fall 1997	Fall 1998	Fall 1999*	Fall 2000	Fall 2001
alternative or other type high school	35.3%	20.0%	18.2%	14.3%	16.7%	10.0%	0.0%
Minneapolis	32.8%	23.8%	38.4%	32.3%	15.4%	3.6%	10.3%
St. Paul	31.5%	34.1%	29.6%	27.0%	18.7%	6.7%	13.0%
NE suburban	45.0%	37.4%	44.0%	39.1%	34.0%	21.7%	25.0%
SE suburban	37.0%	48.8%	44.4%	34.7%	24.4%	24.1%	25.0%
SW suburban	49.6%	37.4%	51.7%	38.8%	29.1%	23.4%	17.1%
NW suburban	37.7%	34.4%	37.5%	40.0%	27.4%	20.0%	21.4%
Private MN	29.6%	38.7%	40.7%	34.3%	28.6%	29.0%	20.0%
outside metro area MN	37.1%	36.1%	48.0%	34.9%	32.9%	24.1%	20.5%
non-MN	53.5%	47.4%	52.2%	46.2%	25.6%	21.4%	25.0%

alternative/other category not displayed because of small group size

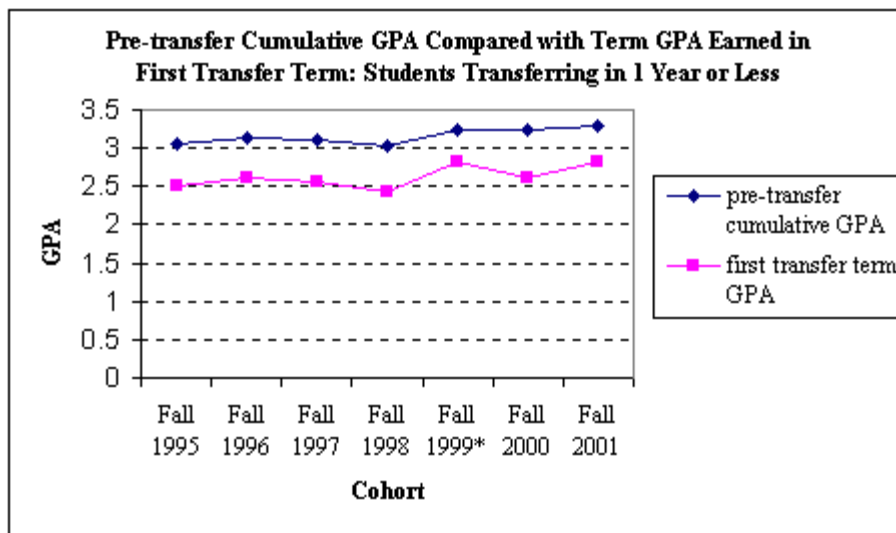


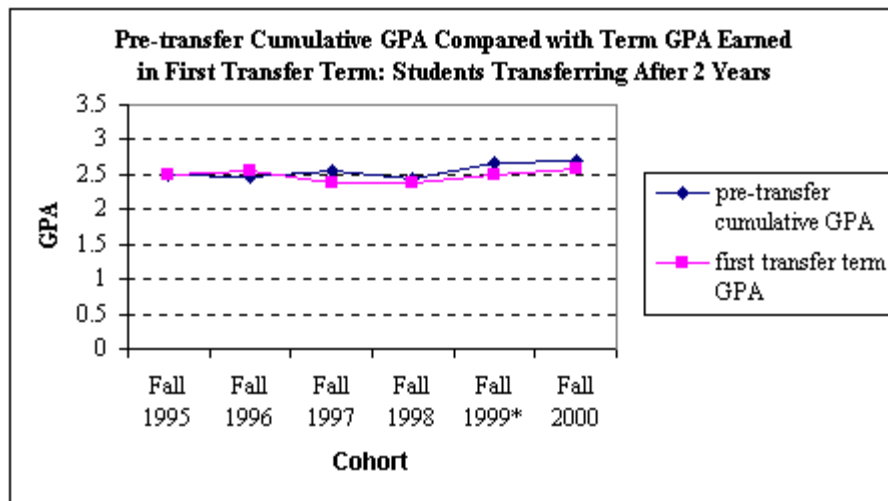
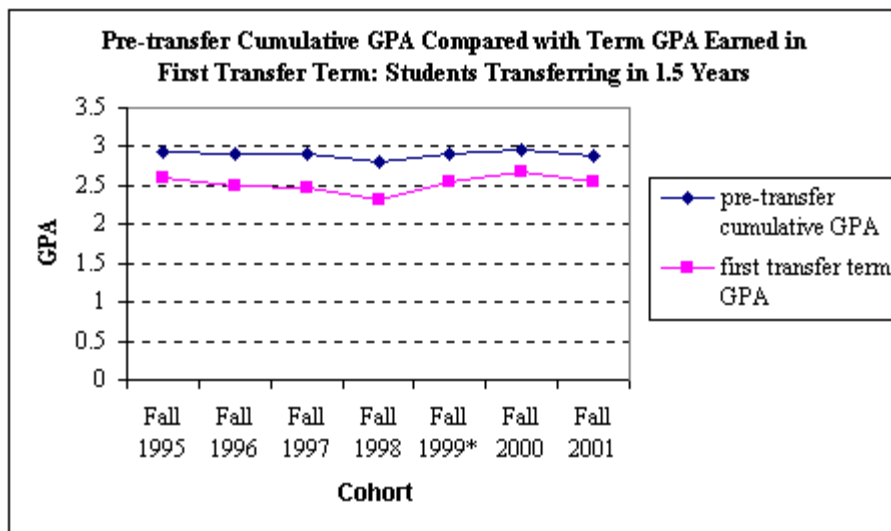


V

**Pre-Post Transfer GPA**

The series of graphs below demonstrate that the longer students remain in GC before transferring, the less drop on GPA they experience in their first transfer term. However, this appears to be a function of the fact that GC students tend to receive lower grades in non-GC classes: courses which, over time, constitute a higher proportion of students' course-loads, hence lowering their cumulative GPA.





please direct any questions/comments to Jennifer Hatfield at [hatf0016@tc.umn.edu](mailto:hatf0016@tc.umn.edu)