

# NORTH SHORE VISIONS



A Newsletter of The Institute For Women's Studies  
University of Minnesota, Duluth

The National Women's Studies Association's tenth annual conference, "Leadership and Power: Women's Alliances for Social Change," will be hosted by the University of Minnesota June 22-26, 1988 in Minneapolis. The conference, through its 250 workshops, plenary sessions, and cultural events, will address differences of race, class, and ethnic background in order to effect personal, social, and political change. It will focus on leadership styles that promote personal empowerment and building successful coalitions among diverse groups of women, especially those of the university and community.

Three conference plenary sessions will highlight American Indian, international, and lesbian issues:

1. "American Indian Women: Diverse Leadership for Social Change" will explore the diverse leadership styles of four American Indian women who have brought about social change for their people through contributions in the areas of literature, education, health care, and political sovereignty.

- Paula Gunn Allen—author/poet, Laguna Pueblo
- Susan Williams—attorney, Sioux
- Annie Wauneka—cultural worker/health advocate
- Rayna Green—historian, Smithsonian Institution, Cherokee

2. "Alliances for Social Change: International Voices" will present diverse strategies for social change within the international community.

- Roxanna Carrillo—grassroots organizer, Latin America
- Corrine Kumar—women's center organizer and peace and justice advocate, India
- Siriporn Skrobaneek—Women's Information Center, Bangkok
- Raquiya Dualeh—Women's Democratic Federation, Somalia

3. "Lesbian Alliances: Combatting Heterosexism in the '80's" will explore various ways in which heterosex-

ism operates and what can be done to expose and change this form of institutional privilege.

- Gloria Anzaldua—author/poet
- Beth Brant—author/poet
- Michelle Parkerson—producer/director
- Joan Nestle—author/Lesbian Herstory Archives founder

The Opening Celebration will feature American Indian and African dancing as well as an American Indian Pipe Ceremony. A Writers Series will feature Adrienne Rich and Audre Lorde giving a special poetry reading. There will also be a special performance by the Minneapolis' Women's Theater Collective, *At the Foot of the Mountain*, as well as a Women's Comedy Night, and nightly coffeehouses. Other entertainment and cultural events include exhibitions of women's creative work, dance, drama, music, craft, video, and film. The always popular Book Exhibit will be on-going throughout the conference. Also planned is a Meet The Publishers Reception.

Pre-Conference Activities begin June 21. Groups meeting include Women's Colleges, the National Council for Research on Women, the International Association of Schools of Social Work, and several NWSA caucuses and task forces.

Pre K-12 Emphasis Day is Friday, June 24. Special activities include concurrent sessions in the morning for elementary, middle school, and high school teachers. A reception is planned for the afternoon. This is an excellent opportunity to network and explore new concepts in pre K-12 education. Workshops focusing on Pre K-12 issues will be included throughout the conference.

Make plans now to attend! You will be receiving registration materials in March. For further information contact: NWSA '88 Conference Center, 237 Nolte Center, 315 Pillsbury Drive S.E., Minneapolis, MN 55455-0139. (612) 625-8803.

Registration materials are now arriving. Please tell Women's Studies if you are planning to participate and we will help to arrange carpools and shared housing. Financial Aid is available for Women's Studies students from the Institute.

April 29th there will be a Women's Studies Potluck following Independent Scholar Liz Bird's presentation of research on supermarket tabloids. The presentation will be in K355-357 at 4 p.m. and the potluck will be at Joanne Hubal's 2403 Somerset. All members of the Institute, students, staff, faculty, scholars, and friends are welcome to attend.

### ON CAMPUS

Ruth Esala, Head of the DFL in Minnesota, will be on campus, Tuesday, May 3. You can talk with her about her job, politics, women, etc., between 10 and 11 a.m. Watch for signs in the halls for more details.

All Women's Studies students who are planning to attend the National Women's Studies Association convention in Minneapolis June 22 - 26 are eligible to apply for financial aid from the Institute. Write a letter stating your intention to attend and your request for funding to the Institute in care of Susan Coultrap-McQuin by May 1, 1988.

Feminist Ethics Roundtable Discussion: If you enjoyed the roundtable discussion about Sara Ruddick's views on maternal thinking, you will want to join us on Wednesday, April 13 at 3:30 in 247 Darland Administration Building for a discussion of "Beyond Gender Difference to the Theory of Care" led by our Independent Scholar Ann Richtman. You may purchase copies of the article for discussion from the Women's Studies office for \$.85.

Women's Studies Brownbag Series: "Claiming Identities They Taught Us to Despise". April 15 - "Lesbian Motherhood": 12:00-1:00 p.m., 247 DAdB.

April 29 - "The History We Dare Not Write: Perspectives on Lesbian Her-story in Duluth and the Northland": 12:00-1:00 p.m., Kirby 323.

May 6 - "Claiming Identities They Taught us to Despise": 11:00-12:30 p.m., Kirby 323.  
May 13 - "Parents and Friends of Lesbian and Gay People": 11:00-12:30 p.m., Kirby 323.

The University Lesbian, Gay and Bisexual Alliance is now meeting alternate Mondays and Thursdays. Contact Women's Studies for more information.

### AROUND DULUTH

April 15 at 7:00 p.m. Erica Bouza will speak on her involvement in the peace movement and how it has changed her life. There will also be a silent auction and refreshments. Sponsored by WAMM - Women Against Military Madness.

The National Conference Administrative Women in Education: Women in Education Today: Political Advocates, will be held Thursday, April 21 through Saturday April 23 at the Holiday Inn, Duluth.

A Conference on The Church's Response to Domestic Violence will be held April 22-23, 1988 at the Duluth Public Library in the Gold Room.

The Women's Coalition offers many programs and support groups through the month of April. Schedule available in Women's Studies.

"The Lake Superior Contemporary Writers Series" is featuring a reading by Sharon Olds on April 15 at the University of Wisconsin-Superior at 7:00 p.m. and A poetry workshop April 16 at The Depot Boardroom from 10:00 a.m. - 12 noon. Participants must preregister by contacting the Depot at (218) 727-8025.

J.J. Danielson will present a workshop on Writing and Selling Humor: Essays, Cartoons, Columns and Stories at The Depot, Ruth Maney Room, April 22, 7-9 p.m. and April 23, 10:00 a.m. to 12 noon.

Peace Activist Joan Byles from Berkely, author of Women at War, will be at St. Scholastica April 14, at 8:00 p.m. in Somers Lounge. She will be at UMD April 15 at 10:00 a.m. in BohH 346.

Sexual Assault Trauma has long term effects. It can affect relationships, work, school, and self-esteem many years later. The recovery process is important. If at any time you have been a victim of any type of sexual assault, a Survivors Support Group will be starting early April. (This is not the same as being in a therapy group, but is designed to give survivors of sexual assault trauma information, support, and control of their lives). For more information call the Program Aid to Victims of Sexual Assault 726-4751.

There will be an open community meeting for all lesbians on April 17th to discuss the possibility of establishing a community lesbian drop-in center. All lesbians are welcome. For more information please call Women's Studies.

The Depot presents the Back-in-Time players with "Women's Suffrage," April 22 at 12 noon, Women in Education Convention, Holiday Inn, Duluth.

Other Depot events include "All My Sons," directed by Brian Matuszak April 15-23, and art exhibits by Ruth Paulson and Nancy Cramer. The Depot events calendar for April/May is available in the Women's Studies office.

### POSITION OPENING

UMD is accepting applications for Interim Director of Affirmative Action. Application deadline is April 30, 1988. For information contact Ms. Julie Westlund, Search Committee Chair, 225 Darland Administration Bldg., UMD, 55812.

### STATEWIDE

The Loft presents Pulitzer Prize winning poet Donald Justice reading from his work on Friday, April 15, 1988 at 8 p.m. Also reading will be local Loft mentor series winners Jennifer Jesseph and Amy Ward. The reading will take place in Bridgman Hall, in the Old Main Building, on the Hamline University campus. Admission is \$4.

Donald Justice will also conduct an informal workshop titled: "On the Musicality of Poetry" Saturday, April 16, at 11 a.m. at the Fireplace Room in Willey Hall, on the University of Minnesota West Bank campus. Admission is \$2.

Seventh annual Women and Spirituality Conference: Spirituality and Social Justice will be held October 1, 1988 at Mankato State University. Workshop proposals are due by April 30, 1988.

Forward in Unity, The Lesbian and Gay Grassroots Leadership Conference will be held May 13-15 in Minneapolis at the University of Minnesota. Deadline for Registration is May 1, 1988.

### CONFERENCES AND CALLS FOR PAPERS

The Second Annual Graduate Student Conference in English Studies will be held October 13-15, 1988 at the University of Wisconsin, Milwaukee. Proposals for panels and workshops are due by June 1, 1988.

The College of Wooster in Wooster, Ohio is holding the Women's Studies 10th Anniversary Celebration April 20-22, 1988. Speakers include Marilyn Boxer, Zillah Eisenstein, Elizabeth Nigginbotham, Bell Hooks and Jean O'Barr. Events are free and open to the public.

Mother's Day Action will be held May 8, 1988 at the ELF Station near Clam Lake. Buses leave St. Paul at 8:00 a.m. for \$17 per person, or plan your own carpool. Bring your own picnic lunch. The program will include Josie Wellenius and music.

Women artists from across Canada and the United States will represent their work in a new Canadian quarterly named Gallerie. The first issue of Gallerie will be available in June 1988. All women show their work with photos and a short written text describing their art, life and philosophy. Gallerie welcomes submissions from women artists regardless of medium; write for entry requirements. Information is available in Women's Studies office.

The editors of Sage: A Scholarly Journal on Black Women, are soliciting manuscripts for a special issue on LEADERSHIP (Submission deadline July 15, 1988) and a special issue on Black Women's Studies (Submission deadline January 15, 1989). Manuscripts should be no longer than 15 typed, double spaced pages. More information is available in the Women's Studies Office.

The Loft is currently accepting submissions for its 1988-89 Mentor Series Competition. During the program eight area writers will be selected to work with five nationally prominent writers. Nonmembers and previous winners are ineligible. Writers may submit in both poetry and fiction categories. Deadline for submission is May 13, 1988.

The Loft Creative Nonfiction Competition will be held August 8 - September 9. Deadline for submissions is April 15, 1988. For complete eligibility requirements and submission guidelines contact the Loft.

The Fund for the Feminist Majority is an organization that promotes women to run for public office. If you would like to send a contribution or find out more about this organization write to: The Fund for the Feminist Majority.

The 911 Drunk Driver Reporting Program encourages people to report people who they think to be driving drunk by dialing 911. The goal of this program is to communicate the 911 message by using several media points currently in existence in communities and to promote community awareness of the resource. For more information contact Bob Swanfeld Area Network Coordinator, Minnesota Institute of Public Health.

"Leadership for Today and Tomorrow," the Fourth National Conference for College Women Student Leaders, will be held June 2-4, 1988 in Washington D.C. at the George Washington University. The deadline for advance registration is May 13, 1988.

#### CONGRATULATIONS

Beth Bartlett, Associate Professor of Political Science, has edited and annotated a collection of Sarah Grimke's writing entitled Sarah Grimke: Letters on the Equality of the Sexes and Other Essays, which was recently published by Yale University Press.

Joyce Kramer, Associate Professor of Social Work, was in Washington, D.C. March 7th as a consultant to the Office of Minority Health, Public Health Administration for setting priority issues for a national conference on minority health care financing.

Julie Johnson Westlund has been named acting Director of Counseling, Career and Placement Services.

#### THOUGHT FOR THE MONTH

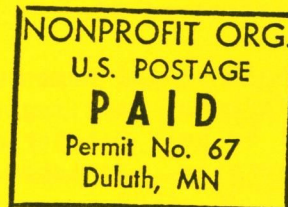
"Everybody gets so much information all day long that they lose their common sense." - Gertrude Stein. Compliments of Janet Pribyl.

\*More information about any of the above events, jobs, conferences, etc. is available in the Women's Studies office 209 Bohannon Hall.

\*\*Announcements for "North Shore Visions" should be addressed to Sarah Ness or Rae Tomczak, c/o Women's Studies, 209 Bohannon Hall or 726-7953. DEADLINE FOR MAY NEWSLETTER IS MONDAY, MAY 2, 1988. The newsletter will be out by MAY 15.

The University of Minnesota is an equal opportunity educator and employer.

INSTITUTE FOR WOMEN'S STUDIES  
209 Boh Hall  
University of Minnesota-Duluth  
10 University Drive  
Duluth, MN 55812



Director and Staff  
Archives  
375 L