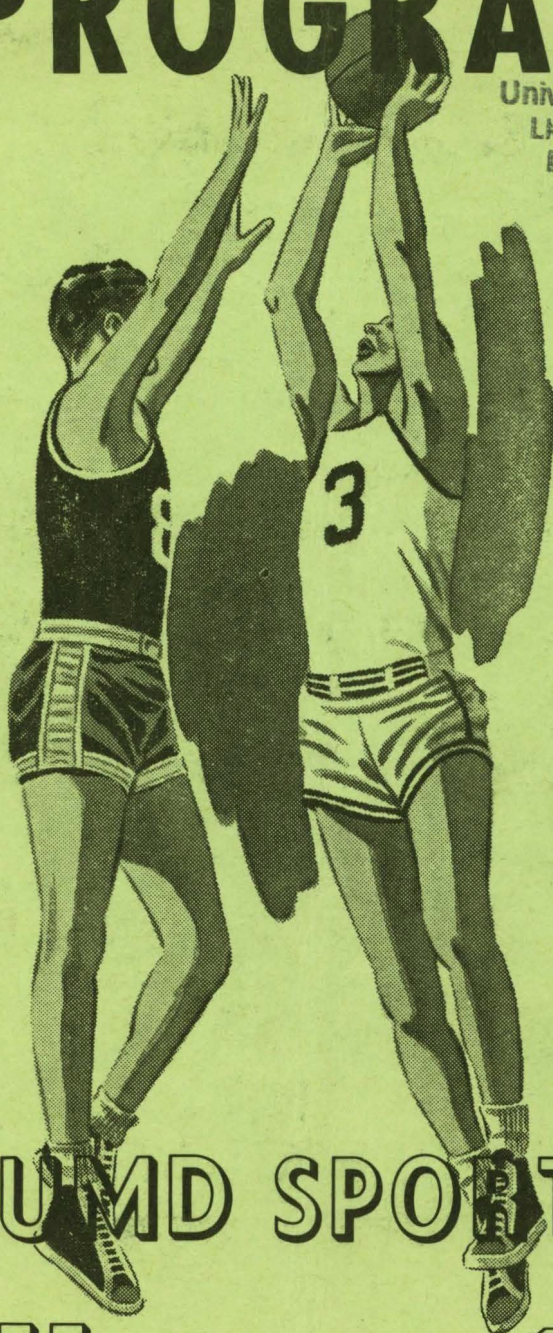


PROGRAM

University of Minnesota
LIBRARY - ARCHIVES
Duluth, Minnesota



UMD SPORTS

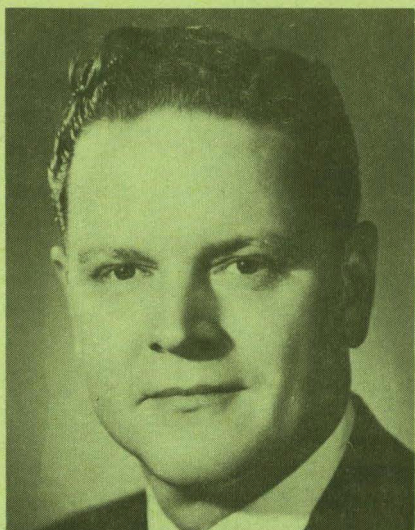
1955

FIFTEEN CENTS

1956

A Greeting from the Provost

UMD is a relative newcomer to the northern Minnesota athletic picture; yet is already benefitting greatly from and contributing substantially to area athletics. UMD's spacious



PROVOST R. W. DARLAND

physical education building has been used for district and regional basketball tournaments witnessed by thousands. UMD-educated physical education teachers are employed in many area school systems. UMD offers excellent facilities for athletic participation and also for the preparation of teachers in the field of health and physical education.

On the other hand, many area communities are represented on the rosters of teams UMD has fielded since becoming a part of the University of Minnesota in 1947. The 1955-56 hockey and basketball teams provide many such examples. For its new hockey coach, UMD chose Eveleth's Connie Pleban, recognized as among the ablest coaches of the sport in the nation.

We at UMD are delighted to be a participating member in a sports community which displays such an active, wholesome interest in all phases of athletics. To all who attend UMD games this year, we offer a hearty welcome. Northern Minnesota is rich in athletic traditions. May you continue to enjoy sports in "the northern Minnesota manner."

Your Program Publishers

This program has been prepared and published by the UMD chapter of Pi Delta Epsilon, oldest honorary undergraduate journalism fraternity in the nation. Members have volunteered their time in its writing and editing. The advertisers appearing on its pages have made its publication possible.

As the amount permits, proceeds will be used to establish a Pi Delta Epsilon scholarship or loan fund at UMD and to recognize outstanding contributions to campus journalism through an annual publications dinner each spring. The publications dinner also will highlight the annual Pi Delta Epsilon initiation, at which pledges will be accepted into the fraternity.

Pi Delta Epsilon seeks to raise collegiate journalism standards through critical services, national competitions in writing and editing and the examples set by its members on the campuses of the nation.

Pi Delta



Epsilon

Katherine Coughlin, president
Enid Hagen, vice president

Robert Burt, secretary
Maxine Doolittle, treasurer
Ralph Romano, historian

General Information on UMD

Location 2205 E. 5th St., Duluth, Minnesota
 Founded As State Normal School in 1895
 became Branch of Univ. of Minn. July 1, 1947.
 Colors Maroon and Gold
 Nickname Bulldogs
 Conference MIAC
 Provost Raymond W. Darland
 Business Manager Earl H. Hobe

Chairman, Committee on Intercollegiate Athletics Emmett Davidson
 Head Football Coach and Director of Athletics Lloyd W. Peterson
 Head Basketball Coach and Assistant Director of Athletics Norman Olson
 Team Physician Dr. Warren T. Brooker
 Head, Information Service Clarence N. Anderson
 Student Assistant, Sports Information Ralph Romano

General Ticket Sales in Athletic Office,
 Health and Physical Education Building
 University of Minnesota, Duluth Branch

Basketball Season Tickets	\$10.00	Hockey Season Ticket	\$7.50
Basketball Gate Tickets	1.25	Hockey Gate Ticket (Reserved)	1.25
Elementary Students	.35	Elementary Students (12 yrs and under)	.35
Jr. & Sr. High School Students	.50	Jr. & Sr. High School Students	.50
General Admission	1.00	General Admission	1.00

McGREGOR

Sportswear

FAMOUS for QUALITY

The **BIG DULUTH**

222 West Superior Street

Men's and Boy's Apparel

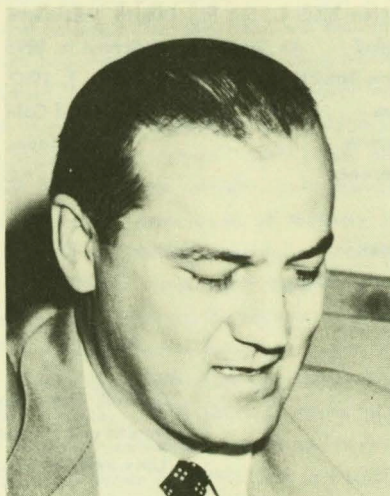
Bulldog Coaches

John "Connie" Pleban, one of the most successful of American hockey coaches, took over the reins of the UMD Bulldogs early this year.

Pleban, a native of Eveleth, coached the National AAU World Champions in 1950 and the US Olympic squad in 1952. The latter lost only to Russia and Czechoslovakia in one of the finest displays of American talent ever witnessed.

After his return from the world games, Pleban took over as head coach of the Eveleth-Virginia Rangers of the now defunct Thunder Bay-Arrowhead League. Once again his team made a fine showing.

Pleban played his hockey in Eveleth when it was at its height as a hockey center. Some of his friends and teammates moved on to the professional ranks. Pleban's knowledge of how the game should be played is now being applied to the Bulldogs, and they thrive on it.



COACH 'CONNIE' PLEBAN

The fine 1955-56 freshman talent, touted to be the best ever at UMD, is a tribute to coach Norm Olson. When Olson was appointed to take over the reins last season, he arrived too late to do much about strengthening his squad for the best small college circuit in the country, the MIAC.

Augusta, Wis., marked Olson's first venture into the coaching ranks. In 1940 and 1942 his cagers won the Mississippi Valley conference championship. In 1943 his career switched to an LST in the navy. As an ensign he served in the invasions of Salerno and Normandy.

After his release the remainder of 1946 was spent at Augusta. The following fall he began his stay at Superior

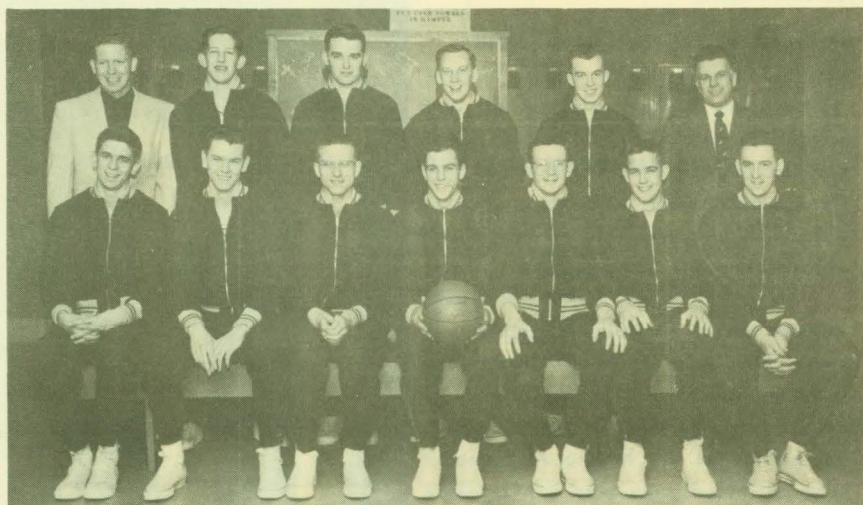
Central. During his eight year-tenure at Central, his squads compiled a 132-54 won-lost record; captured three Head of the Lakes titles (1950-51-54), and journeyed to the state tournament in 1952 and 1954.



COACH NORM OLSON



1954-55 UMD HOCKEY TEAM—Front Row: Frank Holappa, defense; Ron Scott, defense; Frank Johnson, forward; Duane Johnson, goal; Ralph Romano, goal; Mike Horn, forward; Howie Wallene, forward; Ray Heino, student manager. Back Row: Bob Boyat, coach; Merlin Holm, forward; Alex Sisto, center; Don Bourdeau, forward; John Bymark, forward; Harold High, center; John Mitchell, forward; Jerry Callengor, forward; Jim Paton, defense.



1954-55 UMD BASKETBALL TEAM—Front Row: John Ledin, center; Jack McKillop, center; Bob MacDonald, forward; Doug Rossi, forward; Bob Seikkula, forward; Tom Richardson, guard; Carl Anderson, forward. Back Row: Donald Sandstrom, manager; Duane Elofson, guard; Jack Ferkul, guard; Mel Koivisto, guard; Dick Veech, guard; Norm Olson, coach

The Bulldogs' MIAC Fortunes

Although they have been members of the Minnesota Intercollegiate Conference (MIAC) a relatively short time, the UMD Bulldogs have already gained a reputation of strength, ability and a strong competitive spirit.

Championships have been elusive in the major sports with only hockey thus far able to put away a crown. UMD basketball teams have yet to seriously challenge MIAC leaders, but that day appears to be approaching. A title on the gridiron has been within Bulldog grasp several times only to slip away in waning days of the season.

While major sports have missed titles, two of the minor sports are perennial champions. Golf and ski teams are regularly championship contenders. This year a freshman-dominated cross country team grabbed the CC title from St. Thomas. UMD also participates in wrestling, track and swimming.

Conference members are: Hamline, Macalester and St. Thomas at St. Paul; Augsburg at Minneapolis; Concordia at Moorhead; St. John's at Collegeville, and Gustavus Adolphus at St. Peter.

The Bulldogs have been comparatively successful in their brief MIAC history, and although a few weaknesses have cropped up the predominance of freshmen and the fine building program in UMD athletics points to a day when the Bulldogs can challenge the best in the MIAC.

FINAL BASKETBALL AND HOCKEY STANDINGS, MIAC 1954-55

	Won	Lost	Pct.
Gustavus	15	1	.937
Hamline	11	5	.687
St. Mary's	11	5	.687
Augsburg	8	8	.500
St. Thomas	8	8	.500
St. John's	7	9	.437
UMD	6	10	.375
Macalester	6	10	.375
Concordia	0	16	.000

	Won	Lost	Tied	Pts.
St. Thomas	9	1	0	18
UMD	8	2	0	16
Gustavus	5	5	0	10
St. John's	4	6	0	8
Macalester	3	6	1	7
Hamline	0	9	1	1

The 'Statesman' Salutes



Captain Rossi

Forward Doug Rossi, an aggressive, alert Mt. Iron product, has earned the honor of captain of the basketball team. One of three holdovers from the 1955 squad, Rossi has shown outstanding leadership in propelling the Bulldogs in the MIAC. In early games his colorful and hard driving style of play has placed him as the scoring leader for UMD. He has 61 points in four games for a 15.3 points per game average.

Rossi enrolled at UMD in the fall of 1954, after completing two years at Virginia Junior College. In his last season at Virginia, he was selected captain and at the year's completion was chosen as an all conference forward.

While under the UMD colors last season, Rossi slowly worked his way into the starting five and was used by coach Olson chiefly in defensive strategy. Grabbing his share of rebounds and keeping a watchful eye on the opposition's star assured him a berth on this year's team. He has since proven his ability to score.

Besides his ability in the basketball world, his high scholastic rating and contributions to his major field of education earned him the honor of being selected as one of the twenty-six top students who have contributed the most to the school. They will be included in the 1956 edition of Who's Who in American Colleges and Universities.

Upon completion of studies at UMD, Doug plans to enter the teaching field in elementary education.

No.	Name	FG	FT	PF	Pts.
12	ROSSI	2222222222	11111111111111	12345	
13	WASHBURN	2222222222	11111111111111	12345	
14	INTIHAR	2222222222	11111111111111	2345	
25	KEISKI	2222222222	11111111111111	12345	
20	BYLKAS	2222222222	11111111111111	12345	
21	McKILLOP	2222222222	11111111111111	12345	
22	VEECH	2222222222	11111111111111	12345	
23	EISENBERG	2222222222	11111111111111	12345	
31	SAMPSON,	2222222222	11111111111111	12345	
32	MONSON	2222222222	11111111111111	2345	
41	BERGSTEDT	2222222222	11111111111111	2345	
35	EKROOT	2222222222	11111111111111	12345	
42	ROBERTS	2222222222	11111111111111	12345	
Total					

No.	Name	FG	FT	PF	Pts
37	PATTERSON	2222222222	11111111111111	2345	
38	WALLIN	2222222222	11111111111111	2345	
43	COLVARD	2222222222	11111111111111	2345	
35	GOLDBERG	2222222222	11111111111111	12345	
45	SPRINGER	2222222222	11111111111111	2345	
42	YOUNGDAHL	2222222222	11111111111111	12345	
33	PATZWALD	2222222222	11111111111111	2345	
30	SWEENEY	2222222222	11111111111111	12345	
31	CADWELL	2222222222	11111111111111	12345	
34	SMITH	2222222222	11111111111111	2345	
36	ERDMAN	2222222222	11111111111111	2345	
32	HIXON	2222222222	11111111111111	12345	
44	RILL	2222222222	11111111111111	12345	
Total					

Compliments of



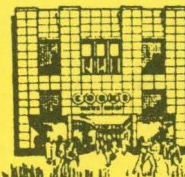
MEN'S WEAR
Medical Arts Building
Duluth 2, Minn.

Compliments of the

SPALDING HOTEL

HEADQUARTERS OLYMPIC
HOCKEY TEAM

Duluth Home for All
Visiting Teams




Style Conscious Men Always

Find It First At. . . .

Cooks

405-407 West Superior Street
Duluth 2, Minnesota



The Finest From Europe and
America For You

Plaza Sports Shop

1305 E. Sup. St. RA4-1080

UMD INDIVIDUAL RECORDS SINCE 1950

Most points scored, season, all games--	Rudy Monson (1950)--456
	Chuck Hiti (1954)--433
	Chuck Hiti (1953)--422
Most points scored, season, conference--	Chuck Hiti (1953)--306*
	Chuck Hiti (1954)--255*
	Rudy Monson (1950)--231**
Highest per game avg. season, all games--	Rudy Monson (1950)--20.45
	Chuck Hiti (1953)--18.35
	Chuck Hiti (1954)--17.25
Highest per game avg. season, conference--	Rudy Monson (1950)--19.17***
	Chuck Hiti (1953)--19.13
Most points college career--	Rudy Monson 960 2.5 yrs 1948 thru 1950
	Chuck Hiti 855 2 yrs 1953 thru 1954
	Mel Koivisto 828 4 yrs 1952 thru 1955
	Bob McDonald 666 2 yrs 1954 thru 1955
	Bruce Paulson 629 3 yrs 1949 thru 1950
	Eugene Norlander
	501 2 yrs 1949 thru 1950
	Tom Richardson
	472 1 1/3 yrs 1954 thru 1955
	Mark Vukelich 444 1 1/3 yrs 1953 thru 1954
Most points single game --	Mark Vukelich 34 Eau Claire T.C. 1953
	Rudy Monson 33 St. Cloud T.C. 1950
	Jack McKillop 33 St. John's 1955
	Chuck Hiti 29 St. Mary's 1952

Most games scored 20 or more points--Chuck Hiti (1954)--12

* Compiled in 16 conference games

** Compiled in 12 conference games

*** Led conference 1950

The Whistle Man



Statistically Speaking

Facts and figures about the UMD Health and Physical Education Building

Gymnasiums

Main Gym—131 by 104 feet.

Women's Gym—96 by 54 feet.

Two auxiliary gyms each 60 by 40 feet. Soundproof folding doors 104 feet long and 24 feet high, electrically driven, divide women's from main gym for separate use.

Floors—patented interlocking construction; maple wood blocks set in mastic on one-half cork base over concrete; cork expansion joints at all edges.

Permanent seating in Main gym—1,382 cushioned seats in balconies; 2,200 in rollaway bleachers. Temporary bleachers will increase seating indeterminate-ly, as activity requires.

Lighting on Main gym playing surface—50 foot candles, equal to or better than that in the modern classroom.

Total building wattage—218,000

Swimming Pool

Pool dimensions—75 by 36 feet (official intercollegiate size.)

Depths—10 feet, deep end; 3'6" at shallow: height of room from pool edge to ceiling—24 feet.

Pool water capacity—120,000 gallons; 350-gallon per minute pumping system assures complete re-purification of water every six hours.

Classrooms and Offices

Classrooms—one room 65 by 20 feet that can be divided with soundproof folding doors; one corrective room for remedying posture faults, etc.; two men's classrooms.

Offices—11 staff offices, two general offices, one staff lounge and one conference room.

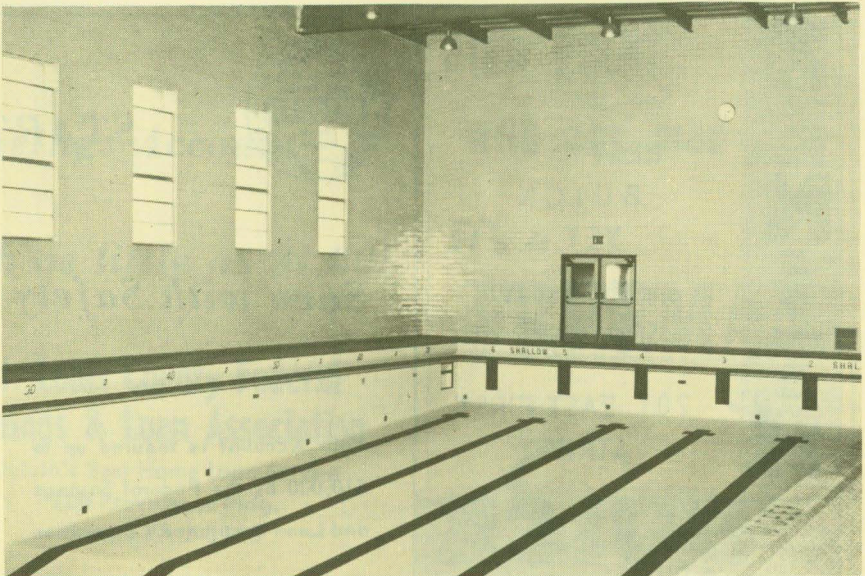
Other Spaces

Three ticket booths (six windows); women's locker rooms, women's shower rooms, women's dressing rooms, women's hair drying room with hot-air blowers, shower rooms for women's and men's locker rooms, men's general locker room, varsity dressing room, men's visiting team locker room, training room; unfinished space at ground level adaptable for storage, rifle range, archery range, etc.

Heating and Ventilation

Electronic air filter.

Ventilation equipment assures complete change of air throughout building every 4.7 minutes.



UMD--MIAC Basketball Record

Eldena

UMD ALL-TIME BASKETBALL RECORD IN THE MIAC (UMD Score Listed First)

	1950	1951	1952	1953	1954	1955
CONCORDIA	75-53	25-32	55-67	62-55	82-52	100-77
(8-2)	81-80			80-69	61-58	97-73
GUSTAVUS	59-60	58-75	70-90	89-62	73-72	61-80
(2-8)			50-75	61-62	79-104	64-80
AUGSBURG	59-60	66-65	39-61	70-84	79-65	62-66
(5-5)			65-71	76-70	78-76	77-69
ST. JOHN'S	61-49	82-65	71-83	68-67	89-68	56-74
(6-5)	55-60	71-79		78-68	74-84	83-81
MACALESTER	50-61	62-53	50-74	67-72	60-68	67-60
(3-6)				67-76	74-65	61-87
ST. THOMAS	54-62	70-69	52-80	75-70	58-77	74-69
(3-7)		66-69		62-82	80-95	68-65
ST. MARY(S)	60-73	59-61	71-75	99-110	67-89	81-86
(2-8)		67-78		75-62	97-90	92-93
HAMLIN	51-68	59-75	61-76	63-69	70-83	52-58
(0-11)	65-70		58-75	73-94	65-81	78-88

Certified Cleaning

EXCLUSIVE at

**INDEPENDENT
CLEANERS & LAUNDERS**



1029 EAST SUPERIOR STREET

19 East Superior St. 119 West First St.

RA 4-8871

WHERE COOKING IS AN ART
AND Best Friends MEET



Zelda

INN GRILL

BASKETBALL SCHEDULE

Dec 28-29	Bemidji Christmas tournament	
Jan. 3	Hamline	Home
10	Augsburg	There
14	St. Mary's	Home
17	Macalester	There
21	Gustavus	There
23	Concordia	Home
31	Superior	Home
Feb. 4	St. Thomas	Home
7	St. John's	There
11	Hamline	There
14	Superior	There
18	Augsburg	Home
20	St. Mary's	There
24	Macalester	Home
28	Gustavus	Home

HOCKEY SCHEDULE

Dec. 16-17	Eveleth	Home
28	Olympic Team	Home
Jan. 2	Regina Pats	Home
7	Gustavus	Home
10	St. Thomas	There
12	Hamline	There
14	Macalester	There
17	Augsburg	There
26	St. John's	There
28	Augsburg	Home
Feb. 7	Gustavus	There
11	St. Thomas	Home
15	St. John's	Home
18	Macalester	Home
22	Hamline	Home

ZENITH

See the
BEST
BUICK
YET

and the finest in
USED CARS at

201 EAST FIRST
STREET

BUICK



START a

Savings Account

with as little as \$1.00!

**St. Louis County Federal
Savings & Loan Association**

Duluth's Best Home Loan Service

104 Providence Bldg.

Phone RA 2-3966

Save with Safety

Your Account is insured up to
\$10,000 by the Federal Savings
and Loan Insurance Corporation

HIGH POINT

with any man . . .

It's a

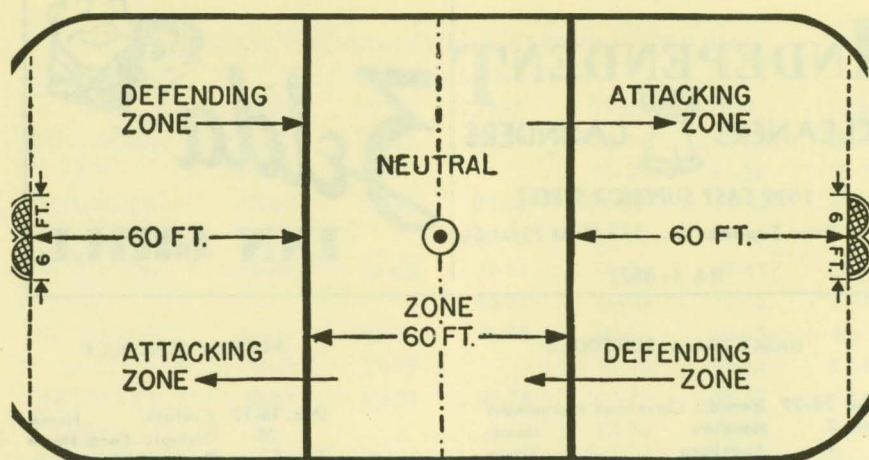
FREEMAN

Shoe

Cooks

405-407 West Superior Street
Duluth 2, Minnesota

The Regulation Hockey Rink



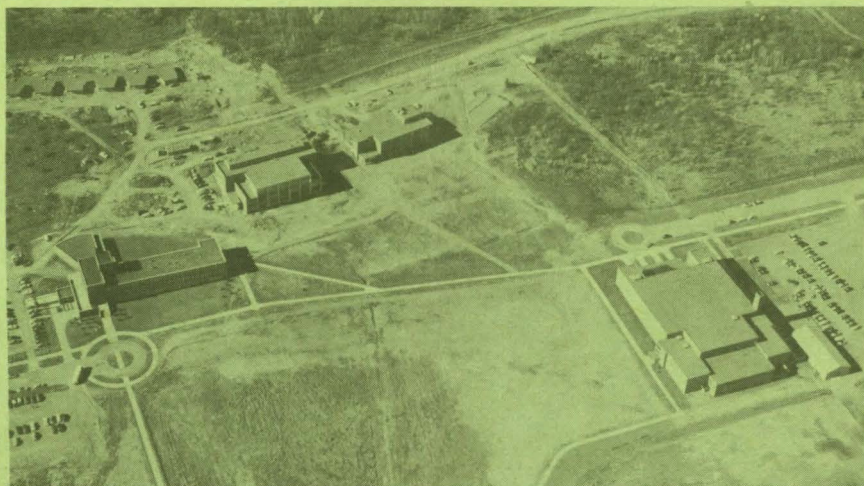
A sketch of a regulation hockey rink shows playing zones. An off-side is generally called when the puck precedes an attacking player into the offensive or attacking zone.

The UMD Gymnasium



One of the finest gymnasiums in the Midwest, the UMD gymnasium has been the scene of spirited district and regional high school tournament action as well as regular season games of both UMD and area high school teams.

UMD--A Growing Campus



A recent aerial view of UMD's upper campus, a beautiful 196-acre expanse, shows rapid physical development since the Duluth campus became part of the University of Minnesota in 1947. The buildings shown are, from left to right, science building, student center, library and health and physical education building. The student center and the eight-resident dormitory units at upper left are being completed. Now accommodating 1,925 undergraduate and 20 graduate students, the UMD campus is being developed to accommodate more than 3,500 students by 1965.

Compliments of

**DULUTH MOTORS,
INC.**

430 E. SUPERIOR STREET



"Pete"
invites you
to come
in for
personal
attention
at

The Store for Better Values
in Men's Clothing

McGregor-Soderstrom

304 West Superior Street
Duluth, Minnesota

GILBERT BUFFINGTON COMPANY

General Insurance

17 Phoenix Building

Phone RA 2-7500



LARRY GAIDA Standard Service Station

GAS - OIL - TIRES
WASHING - GREASING - AUTO ACCESSORIES
1007 LONDON ROAD PHONE RA 4-1488

Support Your



U.S. Olympic Fund

Compliments of

PAINE, WEBBER, JACKSON & CURTIS

ESTABLISHED 1879
305 WEST SUPERIOR STREET
DULUTH 2, MINNESOTA

MEMBERS
PRINCIPAL STOCK AND
COMMODITY EXCHANGES

TELEPHONES:
DULUTH RA 2-7401
SUPERIOR EX 2-8872