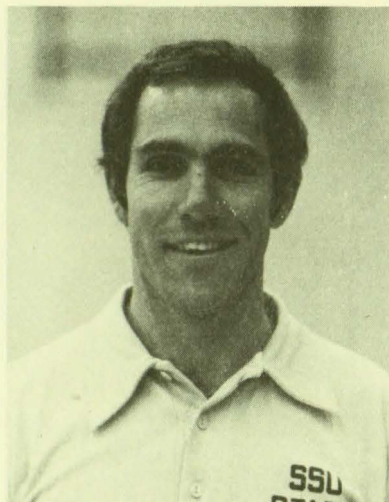


**UNIVERSITY OF MINNESOTA, DULUTH
BASKETBALL
1979-80** 50 cents

Southwest State Jan. 12, 1980

TODAY'S GAME

YOUTH DOMINATES VISITING MUSTANG TEAM



Dale Honeck

University of Minnesota-Duluth basketball fans will get a chance to see the youngest team in the Northern Intercollegiate Conference today, but the Golden Mustangs of Southwest State may also surprise fans with an exciting style of play.

Exciting and basketball go hand-in-hand with Golden Mustang head basketball coach Dale Honeck, a six-year veteran of the rugged NIC. During his tenure with the Marshall University, Honeck has produced two league "most valuable players," three conference scoring champions and two NAIA (National Association of Intercollegiate Athletics) honorable mention all-Americans. And, that isn't bad considering the Mustangs had procured a 46-game losing string prior to Honeck's appointment.

Still, Southwest State has found the 1979-80 season a lean one thus far, losing eight of eleven games going into last night's battle at Michigan Tech University in Houghton, Michigan. One of the main reasons for this skid may be that the Mustangs do not have a senior on the club.

Honeck has often stated "It's tough to win with

underclassmen in the NIC," and there is probably not a coach in the league that would disagree with him. Today, Southwest State could possibly start two freshman in its lineup, along with three other juniors.

For Minnesota-Duluth, it continues to be a must-win situation if the Bulldogs are to have any stake at claiming an NIC championship and getting a playoff bid. Senior leadership has been important in getting this far, and head coach George Fisher has found his upperclassmen reliable as they all were averaging double-figures in scoring going into Thursday evening's game with St. Cloud State University.

The game pace may be somewhat different today than in Thursday's contest. Southwest State possesses more quickness than strength under the boards, although they can execute both the fast-break and a controlled and deliberate offense.

Next action for the Bulldogs is Wednesday night when Northland College, Wisconsin, visits the UMD Physical Education Building for a 7:30 p.m. game.

UMD 13-GAME STATISTICAL SUMMARY (Not Including St. Cloud State Game)

NAME	G	FG	FGA	PCT	FT	FTA	PCT	REB	AVG	PF-D	A	TP	AVG
Metso—C	13	86	169	.509	44	58	.759	128	9.8	40-1	19	216	16.6
R. Johnson—F	13	83	157	.529	45	58	.766	142	10.9	42-0	22	211	16.2
King—G	13	57	122	.467	28	39	.718	35	2.7	36-1	47	142	10.9
MacDonald—F	13	59	123	.479	15	21	.714	38	2.9	17-0	23	133	10.2
Retica—G	13	46	102	.451	24	32	.750	43	3.3	29-0	29	116	8.9
N. Johnson—G	11	17	40	.425	10	21	.476	14	1.3	30-2	34	44	4.0
Sundberg—G	9	12	21	.571	7	8	.875	5	0.6	2-0	3	31	3.4
Akers—G	11	10	23	.435	7	9	.778	6	0.5	20-0	14	27	2.5
Schneeberg—F	6	7	13	.538	2	2	1.000	10	1.7	5-0	0	16	2.7
Linnell—G	11	5	19	.263	6	9	.667	12	1.1	13-0	12	16	1.5
Nett—F	5	3	6	.500	0	0	.000	10	2.0	2-0	3	6	1.2
Sojka—F	5	2	5	.400	0	0	.000	7	1.4	8-0	1	4	0.8
Anderson—F	1	1	2	.500	0	1	.000	0	0.0	0-0	2	2	2.0
Webb—G	1	1	1	1.000	0	0	.000	1	1.0	0-0	0	2	2.0
Enderlein—G	3	0	1	.000	0	0	.000	0	0.0	1-0	1	0	0.0
Others		0	5	.000	0	2	.000	5		2-0	0	0	
								Team	73				
								Deadball	10				
UMD TOTAL	13	389	809	.481	187	257	.728	542	41.5	247-4	210	965	74.2
OPP TOTAL	13	400	857	.467	145	225	.644	483	37.2	240-8	211	945	72.7

RESULTS

UMD	OPP	UMD	OPP
66 UW-Superior	67	95	UW-Superior
53 UW-Stevens Point	65	64	*Northern State
82 Northland	68	94	+Bellevue
83 Lakehead	88	79	+Kearney State
69 Lakehead	78	73	*Winona State
77 *Bemidji State	65	62	*Mankato State
69 *Moorhead State	71		ST. CLOUD STATE

*NIC Games
+Kearney State Invitational

University of Minnesota, Duluth

Bulldogs

No.	Name	Pos.	Hgt.	Wgt.	Yr.	Hometown	Field Goals	Free Throws	Fouls
10	Tyrone King	G	5-10	155	4	Chicago, Ill.	2222222222	1111111111	12345
12	Fred Akers	G	6-2	170	3	Des Moines, Iowa	2222222222	1111111111	12345
14	Nicky Johnson	G	6-0	160	1	Milwaukee, Wis.	2222222222	1111111111	12345
20	Rick Sundberg	G	6-1	150	1	Ashland, Wis.	2222222222	1111111111	12345
22	Dan Sojka	F	6-4	175	1	Mountain Iron, Minn.	2222222222	1111111111	12345
24	John Retica	G	6-5	180	3	Hibbing, Minn.	2222222222	1111111111	12345
30	Norm Linnell	G	6-3	195	2	Duluth, Minn.	2222222222	1111111111	12345
32	Rockne Johnson	F	6-7	215	4	Duluth, Minn.	2222222222	1111111111	12345
34	Jim MacDonald	F	6-4	205	4	Two Harbors, Minn.	2222222222	1111111111	12345
40	Ron Metso	C	6-7	210	4	Barnum, Minn.	2222222222	1111111111	12345
42	Rob Schneeberg	F	6-6	215	4	Wisconsin Rapids, Wis.	2222222222	1111111111	12345
44	Steve Enderlein	G	6-1	160	1	Thief River Falls, Minn.	2222222222	1111111111	12345
50	Joe Nett	F	6-3	170	2	Winona, Minn.	2222222222	1111111111	12345
54	Tom Anderson	F	6-4	185	1	Duluth, Minn.	2222222222	1111111111	12345

HEAD COACH: George Fisher

ASSISTANT COACHES: Gary Schraufnagel,
Sam Robinson, Butch Kuronen

SOUTHWEST STATE UNIVERSITY

Golden Mustang

No.	Name	Pos.	Hgt.	Wgt.	Yr.	Hometown	Field Goals	Free Throws	Fouls
00	Mark Ornatek	C	6-9	220	3	North Chicago, IL	2222222222	1111111111	12345
13	Jeff Johannesen	G/F	6-3	185	3	Alta, IA	2222222222	1111111111	12345
15	Steve Burton	G	6-1	180	1	Manteo, NC	2222222222	1111111111	12345
21	Donald Holley	G	6-0	170	1	Edenton, NC	2222222222	1111111111	12345
23	Joel Darge	G	6-0	170	3	Good Thunder, MN	2222222222	1111111111	12345
25	Kevin Pfingsten	G	6-1	170	3	Worthington, MN	2222222222	1111111111	12345
33	Dan Clayton	G	6-1	160	1	Marshalltown, IA	2222222222	1111111111	12345
35	Scott Surprenant	F	6-6	185	2	Luverne, MN	2222222222	1111111111	12345
43	Jimmy Dillard	G	6-0	170	1	Edenton, NC	2222222222	1111111111	12345
45	Doug Imming	F	6-5	185	1	Fonda, IA	2222222222	1111111111	12345
51	Konnie Wilke	C	6-7	225	3	LeSueuer, MN	2222222222	1111111111	12345
55	Larry Tellinghuisen	F	6-4	200	3	Worthington, MN	2222222222	1111111111	12345

HEAD COACH: Dale Honeck

ASSISTANT COACHES: Harry Jones, Brad Pietrowski,
George Valentine

UNIVERSITY OF MINNESOTA—DULUTH
1979-80 SCHEDULE

Date	Opponent	Site	Time
Dec. 28-30	Kearney State Invitational	Stevens Point, WI	7:30
Dec. 1	Wisconsin-Superior	Duluth, MN	8:00
3	Wisconsin-Stevens Point	Stevens Point, WI	7:30
5	Northland College	Ashland, WI	7:30
7	Lakehead University	Duluth, MN	8:00
8	Lakehead University	Duluth, MN	3:00
13	*Bemidji State	Bemidji, MN	8:00
15	*Moorhead State	Moorhead, MN	7:30
19	Wisconsin-Superior	Superior, WI	7:30
22	*Northern State	Duluth, MN	3:00
28-29	Kearney State Invitational	Kearney, NE	
Jan. 5	*Winona State	Winona, MN	7:30
7	*Mankato State	Mankato, MN	7:30
10	*St. Cloud State	Duluth, MN	7:30
12	*Southwest State	Duluth, MN	3:00
16	Northland College	Duluth, MN	7:30
19	*Michigan Tech	Houghton, MI	7:30
24	*Northern State	Aberdeen, SD	8:00
26	*Minnesota-Morris	Morris, MN	7:30
31	*Bemidji State	Duluth, MN	7:30
Feb. 2	*Moorhead State	Duluth, MN	3:00
9	*Winona State	Duluth, MN	3:00
11	*Mankato State	Duluth, MN	7:30
13	*St. Cloud State	St. Cloud, MN	7:30
16	*Southwest State	Marshall, MN	3:00
23	*Michigan Tech	Duluth, MN	3:00
25	*Minnesota-Morris	Duluth, MN	7:30

*Northern Intercollegiate Conference Games



This is UMD

There is a continuing air of excitement at the University of Minnesota-Duluth. A young and vigorous institution, UMD is much more than buildings and books. It is a total educational experience, dedicated to providing students with an opportunity to become truly educated... socially, intellectually, emotionally and physically.

Joining with the University of Minnesota in 1947, UMD is one of five campuses in the University system. Minnesota-Duluth's primary mission is to provide high quality instructional programs for undergraduate students. It also provides graduate, professional and continuing education programs along with significant research and service activities.

Situated near Lake Superior in the hills of Duluth, UMD has a physical plant of over 30 buildings valued at \$50 million. As a result of an interconnected all-weather campus and distinctive barrier-free architectural design, physically handicapped students have greater access to facilities at UMD.

The student body at UMD numbers approximately 7,100 with a faculty of 400. Minnesota-Duluth is large enough to fit the needs of students seeking a university-level education, but small enough to assure friendly relationships with faculty, staff and fellow students.

UMD offers 73 majors, including a bachelor's program in inter-disciplinary studies. The University offers 16 pre-professional programs.

Minnesota-Duluth's undergraduate programs are organized within two colleges and three schools: College of Letters and Science, College of Education, School of Business and Economics, School of Social Development and School of Fine Arts. Graduate programs are offered through the University of Minnesota Graduate School and College of Education. UMD also offers the first two years of basic science for students in the School of Medicine.

UMD Advertisers

The following merchants and businessmen are supporters of intercollegiate athletics at the University of Minnesota-Duluth. Their advertisements appear in THE BULLDOG, the University of Minnesota-Duluth's official souvenir hockey program.

Adam & Eve Hair Designers
Air Force ROTC
Al & Lou's Shell Service
Arrowhead Blacktop Co./
Zenith Dredge Co.

Bankers Life, The
Bud's Fashions/Bud's Plaza Juniors
Christian Bros., Inc.
Cimarron
Cloquet Co-op Credit Union
Cloquet Transit Co.
Columbia Fashion Clothes
Continental Hair Stylists
Continental Ski Shops
C.Z. Wilson
Duluth National Bank
East End Bottle Shop

Famous Clothing, The
First National Bank of Duluth
Kentucky Fried Chicken
Kit Connection, The
Lake Aire Motel/Bottle Shoppe
Last Chance Liquor
M & K Clothing
Mr. Pete's
Mount Royal Bottle Shoppe
Mount Royal Drug
Normandy Village Restaurant & Lounge
Northern City National Bank
Northwestern Bank of Commerce
Overhead Door Co.
Pantour Travel Service
Perkins Cake & Steak
Pickwick, The

R.A. Bergh & Associates
Radisson Duluth
Rainbow Inn/Bottle Shop
Rohlfing, Inc.
Schrader Drug
St. Louis County Federal Savings & Loan
Security Jewelers
Shakey's Pizza
Ski-doo
Ski Hut, The
Stewart's Wheel Goods
Strommen & Associates, Inc.
Superwood
UMD Bookstore & Food Services
United Truck Body Co.
WDIO Television
Willie's Transmissions