

Minnesota-Duluth

HOCKEY

1986-87





THE UNIVERSITY OF MINNESOTA-DULUTH

There has been one overriding characteristic about the University of Minnesota-Duluth that hasn't changed in all of its 39 years — that characteristic is growth.

Before UMD (founded as Duluth Normal School at the turn of the century) became a coordinate campus of the University of Minnesota in 1947, the site the present day facility occupies was nothing more than brush and woods. By the early 1950s, however, the campus was already taking shape with the Science Building (now called the Chemistry Building) and the Physical Education Building in place. Administrators had a far-reaching plan for UMD's orderly development to 1970. The plan envisioned a student body of 3,500 students by 1970 — more than 5,000 students were actually enrolled by then.

Today, as indicated by this year's enrollment of over 7,500 students, UMD continues its steady growth. New programs recently developed at UMD include the first four-year computer engineering program in the state of Minnesota and two four-year degrees in industrial and materials processing engineering.

UMD also offers more instructional programs than ever for both undergraduate and graduate students in six colleges and schools. Students choose from over 70 undergraduate majors leading to four associate (two-year) degrees and 10 bachelor's degrees, with teacher licensure offered in about 40 areas. Graduate students can earn five master's degrees in 14 fields, with the School of Medicine offering the first two years of graduate basic science.

The campus, located in the Arrowhead region of Northeastern Minnesota overlooking Lake Superior, has 35 buildings, some unique to college campuses: Tweed Museum of Art, Marshall W. Alworth Planetarium, Marshall Performing Arts Center, and the nearby Glensheen Mansion.

UMD's 39 years of continued growth, the last nine under the leadership of Chancellor Robert Heller, is a prime example of the area's commitment to quality higher education.

ON THE COVER:

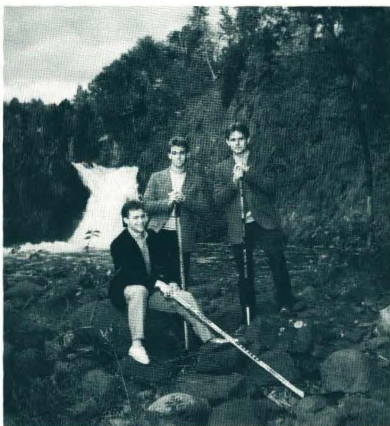
The changing of the seasons means that Bulldog hockey cannot be far behind. The three University of Minnesota-Duluth standouts pictured along the bank of the Lester River in east Duluth include (from left to right) senior captain Guy Gosselin, and senior alternate captains Jim Sprenger and Brian Johnson.

CREDITS:

This 1986 University of Minnesota-Duluth Hockey Media Guide was produced by the Minnesota-Duluth sports information office, Bob Nygaard, director. Written and edited by Bob Nygaard with additional assistance from Jerome Guldinger and Adair Wiebusch. Photography by Ken Moran, Minnesota-Duluth University Relations and C. W. Pack Sports. Composition, graphics and printing by the Minnesota-Duluth Printing and Graphic Arts Department.

INFORMATION:

Media personnel wishing to cover Bulldog home hockey games during the 1986-87 season should contact the Minnesota-Duluth sports information office at (218) 726-8191 at least one week prior to the requested game(s) to obtain credentials. Any information regarding Minnesota-Duluth hockey can be directed to that same number. The best time to reach Head Coach Mike Sertich is 9 a.m. to 12 noon Monday through Thursday at (218) 726-8579. The hockey press box phone number at the Duluth Arena is (218) 727-7939.



WHERE TO FIND IT

The Duluth Arena	2
The Western Collegiate Hockey Association	3
Head Coach Mike Sertich	4
Minnesota-Duluth Assistant Coaches	6
Bulldog Hockey Staff	7
Coach Sertich Comments	8-9
A Look at the '86-'87 Bulldogs	10-33
1986-87 Bulldog Roster	34-35
1985-86 WCHA Statistics	38
1985-86 Results	37
History of Bulldog Hockey	39-40
All-Time Records vs. Opponents	41
1986-87 Opponents	42-46
All-Time Attendance Figures	47
Minnesota-Duluth All Americans, Olympians	48-49
Bulldogs in the NHL	50
Minnesota-Duluth Team Records	51
Minnesota-Duluth Individual Records	52-53
Bulldog Leaders	54
Bulldog Career Scoring Leaders	55
Minnesota-Duluth Team Award Winners	56
Bulldog Hobey Baker and WCHA Award Winners	57
Minnesota-Duluth Year-By-Year Records	58
Minnesota-Duluth Year-By-Year Results	59-63
Where the Bulldogs Will Stay	63
Bulldog Varsity Hockey Alumni	64-67
Minnesota-Duluth Athletics	68
The Masters	inside back cover



THE DULUTH ARENA-AUDITORIUM

The Bulldog hockey program is enhanced by the beautiful and recently renovated Duluth Arena-Auditorium complex that has become the “Home of the Bulldogs.”

Located on the waterfront near Duluth’s famous Aerial Bridge and Canal Park, the Arena-Auditorium has become a landmark in its somewhat brief history. Built in 1966 at a cost of \$6.5 million, the Arena portion of the complex houses the 85 x 190 foot hockey rink of 5,664 seating capacity, locker room facilities, and several meeting rooms. The rink area is extremely versatile as it can easily and quickly be converted into a different “stage” — the Arena also hosts many concerts, dinners, conventions, shows, and other programs.

A catwalk system above the Arena’s ceiling makes for easy access to eight spotlights in baskets, all of which are controlled by a centralized technician’s console. A ventilating system capable of changing the air every eight minutes and air conditioning provide for excellent spectator comfort. There are two spacious press boxes to accommodate radio, television, and press media, and a four-sided \$25,000 score board above center ice tells the story of each game to every fan. An appealing and informative message board was added to the scoreboard two years ago.

A spacious lobby where ticket sales originate separates the Arena from the Auditorium. The Auditorium plays host to concerts, plays, operas, high school graduations, and a variety of other activities. Individual parties also rent out the mezzanine portion of the Auditorium for private parties.

Paulucci Hall, located beneath the lobby, is the center for many post-game parties.

In 1976, an addition was built — Pioneer Hall and the Duluth Curling Club. Pioneer Hall contains a hockey rink and a smaller seating capability with fold-out bleacher seating and is used primarily by St. Scholastica’s hockey team and area high school teams. It is also the home of the Duluth Curling Club with eight curling rinks and an upstairs lounge. The Duluth Arena, incidentally, was the site of the 1984 Silver Broom world curling championships.

A huge parking lot allows for close parking, and a skywalk system — Northwest Passage — links the Arena-Auditorium to Duluth’s downtown.

THE WESTERN COLLEGIATE HOCKEY ASSOCIATION

John Mariucci . . . John Mayasich . . . Bill Masterson . . . Lou Nanne . . . Lou Angotti . . . Bill Watson . . . Brett Hull . . . and the list goes on and on!

You'd be excused if you mistook the list of hockey notables as a sampling of the names out of the Hockey Hall of Fame. Rather, each of the names played a significant role in the growth and development of what has come to be considered the elite college hockey league in the country — the Western Collegiate Hockey Association (WCHA).

The WCHA as we know it today was born in 1959, but its ancestry can be traced all the way back to 1951-52, when Colorado College laid claim to the Midwest College Hockey League championship. Mariucci's Minnesota Gophers rode the crest of Mayasich's heroics to the 1952-53 title before the Midwest Collegiate Hockey League was transformed into the Western Intercollegiate Hockey League (WIHL). Michigan and Colorado College dominated with WIHL throughout the 50's until the league was dissolved in 1958-59.

The seven original schools that made up the MCHL and WIHL — Colorado College, Denver University, Michigan, Michigan State and Michigan Tech, Minnesota, and North Dakota — regrouped in 1959-60 to begin the Western Collegiate Hockey Association.

Denver and Michigan Tech became the domineering teams as two of college hockey's legendary coaches — Murray Armstrong of Denver and Tech's John MacInnes — each won six league titles in the first 17 years of the league's existence. Since 1976, however, Minnesota, Wisconsin, and North Dakota have become the "New York Yankees" of college hockey.

Minnesota-Duluth became the first "expansion" team in the WCHA when it was inducted into the ranks in 1965-66 and Wisconsin made it a nine-team league in 1969-70. The last addition to the conference came in 1971-72 when Notre Dame was added.

The WCHA remained a 10-team league for 10 years, continually sending representatives to the NCAA championships and bringing home title after title. However, there was upheaval in 1981-82 with the abduction of four teams — Michigan, Michigan State, Michigan Tech, and Notre Dame — to the Central Collegiate Hockey Association (CCHA). Nonetheless, the shrunken WCHA, now reduced to six teams, remained the top league in the land.

As the 1982-83 season closed, rumors persisted of an impending merger between the WCHA and CCHA. Rumors soon turned into fruitful negotiations that seemed to be going well until a last-minute stumbling block sent representatives from both leagues home.

But, in January 1984, the WCHA expanded once again back to eight teams as charter league member Michigan Tech returned along with newcomer and Upper Penninsula neighbor Northern Michigan. Both schools had been members of the CCHA.

So as the WCHA prepares to begin its 28th year of operation, eight teams consisting of some 250 players and coaches will continue to write the success script begun by the Mariucci's of yesterday. And, with 10 of the last 14 NCAA Championship titles going to WCHA schools, that's one heck of a success script.



Colorado College	Minnesota
University of Denver	North Dakota
Northern Michigan	Michigan Tech
Minnesota-Duluth	Wisconsin

MIKE SERTICH

Head Coach

Give a guy an inch and he'll take a mile goes the old saying. Give Mike Sertich four years and he'll take the college hockey world by storm.

"If there is anything I've learned in life, I've learned the importance of having pride — pride in oneself, and in our case, pride in our team," says Sertich. "I also want each person associated with our program — the players, coaches, administration, and the fans — to have fun. I think the two go hand-in-hand. If you have pride in yourself and in what you're doing, you're bound to have fun, too."

Not exactly the words you'd hear spewing from the mouth of a guy like Aristotle, but yet no one that's been around college hockey over the past few years is going to knock Sertich's philosophy. Especially when one takes a look at the raw numbers that the easy-going head coach of the University of Minnesota-Duluth hockey team has manufactured during his somewhat limited stint with the Bulldogs.

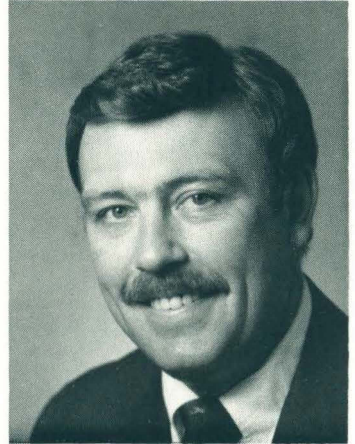
For openers, his four year career record at Minnesota-Duluth stands at 119-50-9. That's a winning percentage of .694 — the best mark ever racked up by a Bulldog head coach. In terms of victories, Sertich is in the No. 2 spot. Sertich is also the only Minnesota-Duluth head coach to guide his team to a Western Collegiate Hockey Association championship, a feat he has accomplished not once, but twice, and to the NCAA playoffs (three-for-four in that department). And as far as the WCHA is concerned, Sertich's efforts have hardly gone unnoticed. During his first three seasons in the league he was selected as their Coach-of-the-Year (an unprecedented achievement).

But all through this enormous flood of success, the 39-year-old Mike Sertich has really remained the same quick-witted, personable guy that he was when he accepted the Bulldogs' head coaching position back in the spring of 1982.

"I think it's always important to keep your priorities in order," says Sertich. "If you start losing sight of that you may find yourself losing touch with a lot of things."

Sertich found himself in somewhat the same kind of predicament about five years ago when alcohol began to unwantedly seep into his life. About the same time, Sertich also started to seriously contemplate leaving hockey, at least for awhile. But after some deep soul searching, Sertich was able to conquer his bout with the bottle and eventually took then athletic director Ralph Romano up on his offer to succeed Gus Hendrickson as the Bulldogs' 11th head coach.

Born and raised in Virginia, in the heart of Minnesota's Iron Range, Sertich was never an extraordinary gifted athlete himself, but his strict adherence to the work ethic made him a standout in hockey, football and



THE NUMBERS ON SERTICH

OVERALL

WCHA

YEAR	W	L	T	PCT	W	L	T	PCT	PLC
1982-83	28	16	1	.633	14	12	0	.538	4th
1983-84	29	12	2	.698	19	5	2	.769	1st
1984-85	36	9	3	.781	25	7	2	.765	1st
1985-86	26	13	3	.655	21	12	1	.632	4th
Totals	119	50	9	.694	79	36	5	.679	

baseball at Roosevelt High School in Virginia. Upon graduation from the prep ranks in 1965, Sertich was offered a scholarship to the University of North Dakota for his football skills, but instead opted to pursue his first love, hockey, at Minnesota-Duluth. During his three seasons as a Bulldog defenseman (freshmen were not allowed to compete during that time) — 1966-69 — Sertich, as he himself is quick to admit, was no superstar, but he was perhaps one of the hardest workers on the club. His career statistics for his three-year collegiate stint include two goals and seven assists for nine points in 64 games. Sertich often jokingly brags about the “scoring prowess” he possessed while a player at Minnesota-Duluth. History does indeed show, however, that the only goal he ever rang up in WCHA play came at the expense of a fellow named Tony Esposito, later of the Chicago Black Hawks and then a netminder with Michigan Tech University.

Following his graduation from Minnesota-Duluth in 1969, Sertich wasted little time in landing his first teaching and coaching job, joining head coach Gus Hendrickson as an assistant coach at Grand Rapids High School. After the two had literally built a hockey dynasty in the early 1970s, Minnesota-Duluth officials persuaded both Hendrickson and Sertich to try their coaching magic at the collegiate level. Sertich served as Hendrickson’s right-hand man and the Bulldogs’ chief recruiter for seven years before accepting his current post.

Active in many local community groups and organizations, including honorary chairman of the Greater Duluth United Way, Sertich and his wife, Audie, have three children — Scott, 18; John, 16 and Lori, 9.



ALL-TIME BULLDOG COACHING RECORDS

Coach	All Games				Conference Games			
	W	L	T	PCT	W	L	T	PCT
Frank Kovach (1930-32)	2	8	0	.200	2	2	0	.500
Joe Oven (1946-47)	11	6	1	.647	10	3	0	.769
Hank Jensen (1947-51)	17	9	1	.654	6	6	1	.500
Gordy Eddolls (1951-54)	21	71	0	.553	15	8	0	.652
Bob Boyat (1954-55)	9	8	0	.529	7	2	0	.777
Connie Pleban (1955-59)	56	25	5	.691	41	0	0	1.000
Ralph Romano (1959-68)	92	121	7	.432	30	49	2	.380
Bill Selman (1968-70)	19	38	1	.333	13	32	1	.289
Terry Shercliffe (1970-75)	82	92	7	.471	60	76	5	.441
Gus Hendrickson (1975-82)	110	146	11	.430	72	97	9	.426
Mike Sertich (1982-)	119	50	9	.694	79	36	5	.679



JIM KNAPP **Assistant Coach**

One team's loss is another team's gain.

So it went with Jim Knapp who, in 1982, was laid off from his teaching and head coaching duties at Aurora-Hoyt Lakes High School only to latch on as an assistant hockey coach with then first-year head coach Mike Sertich at the University of Minnesota-Duluth.

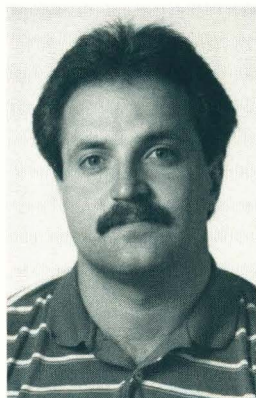
Knapp's return to the Twin Ports was somewhat of a homecoming. From 1972-76, the International Falls native skated at defense for the Bulldogs, winning the Goldie Wolfe Most Inspirational Player Award as a senior following the 1975-76 season.

Following graduation from Minnesota-Duluth in 1976, Knapp served as a student assistant coach for one year before securing the head coaching post at Aurora-Hoyt Lakes High School. While at A-HLHS, he elevated the Blackhawk program from the depths of the Iron Range Conference

standings to a legitimate Minnesota prep powerhouse. In his five seasons at the Blackhawk helm, Knapp turned out a number of top-notch college prospects including former Bulldog standouts Matt Christensen, Bob Lakso and Mike Valesano.

An avid outdoorsman, Knapp's primary duties with the Bulldogs are to assist coach Sertich at practices and behind the bench during games. In addition to coaching, he is also an instructor in Minnesota-Duluth's Department of Health, Physical Education and Recreation.

The 33-year-old Knapp and his wife, Laurie, have three sons — Jesse (10), B.J. (7), and Dan (4).



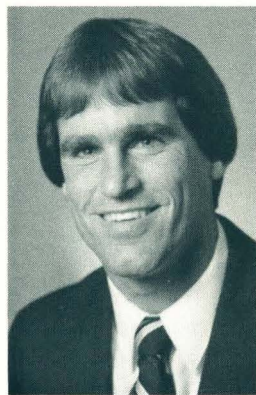
GLENN KULYK **Assistant Coach**

A product of the Minnesota-Duluth hockey program, Glenn Kulyk is in his sixth season with the Bulldogs, making him the dean of the Minnesota-Duluth coaching staff.

The Prince Albert (Saskatchewan) native enjoyed a successful playing career with the Bulldogs as a center from 1976-80. During that span, Kulyk racked up 44 goals and 75 assists for 119 points in 136 games to rank 27th (tied with fellow Prince Albert native and 1985-86 Bulldog captain Mark Odnokon) on the all-time Bulldog scoring charts. As a senior in 1979-80, Kulyk paced Minnesota-Duluth in scoring with 62 points.

Following his collegiate playing days, Kulyk spent one season with the Baltimore Clippers (a minor league affiliate of the Winnipeg Jets) of the American Hockey League.

Kulyk, 28, who was graduated from Minnesota-Duluth in 1980 with a B.A.S. degree in physical education, is responsible for recruiting and working with the Bulldog forwards in practices.



MIKE RANDOLPH **Assistant Coach**

A name familiar to those that follow hockey in Duluth, Mike Randolph returns to the Bulldogs where he served as an assistant coach during the 1981-82 season.

Randolph, 34, was an assistant coach at Duluth Denfeld High School the past two years and previously worked in a similar capacity at the College of St. Scholastica in Duluth. He also headed the Duluth Cathedral High School program in 1979-81.

A native of Duluth, Randolph attended Cathedral High School where he earned All-WCCO State and All-City recognition as both a junior and a senior while also pacing the Hilltoppers in scoring each of those years. After brief stints in the New York Islanders and the now-defunct Minnesota Fighting Saints professional organizations, Randolph was selected to the U. S. Olympic Team in 1976.

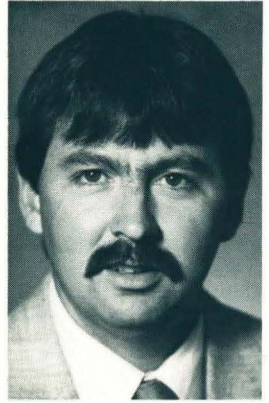
Randolph and his wife, Ginny, have two children — Jimmy, 4, and Jessica, 1 — and are expecting a third child in January. He presently works as a nautalis instructor at a local fitness center in Duluth and also substitute teaches. His part-time duties with the Bulldogs include assisting the forwards at practice and some recruiting.

BULLDOG HOCKEY STAFF

RICK MENZ

Equipment Coordinator

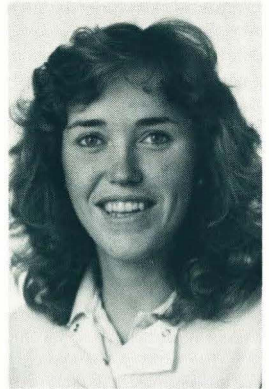
A man whose value to the Bulldog athletic program is hard to appraise because of his behind-the-scenes type of work, Rick Menz is in his eighth year with the Minnesota-Duluth hockey contingent as the equipment coordinator. A native of Duluth, Menz is a 1969 graduate of Cathedral High School. During his high school days, he was employed by the Duluth Arena, where he worked his way up the ranks to become the ice maintenance supervisor in 1975. In the fall of 1979, he was named the equipment coordinator at Minnesota-Duluth in charge of buying, issuing, repairing and maintaining equipment for all Bulldog varsity sports. While at Minnesota-Duluth, Menz completed his undergraduate degree in history and geography. In 1983, he was the equipment coordinator at the National Sports Festival in Colorado Springs, CO. The 35-year old Menz and his wife, Sue, have a daughter, Lauri (6), and a son, Derek (3).



BETTY FLEISSNER

Assistant Trainer

A product of the student training program initiated in the early 1970s, Betty Fleissner has served as Minnesota-Duluth's assistant athletic trainer for the past six years, working primarily with the Bulldog hockey and football teams. Fleissner was graduated from Duluth Denfeld High School in 1976 and was an All-State selection in basketball after helping lead the Hunters to the Minnesota State Tournament in 1976. She was also a member of the Denfeld volleyball and softball units and is a former All-City badminton champion. Fleissner continued to compete in volleyball, basketball and softball at Minnesota-Duluth where she earned a B.A.S. degree in physical education in 1981. She is married to former Bulldog football standout Kelly Fleissner.



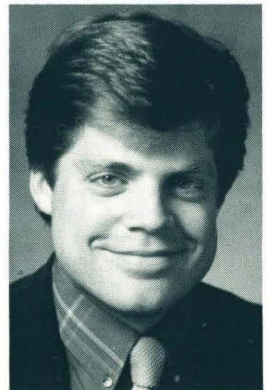
BOB NYGAARD

Sports Information Director

The last few years have seen Minnesota-Duluth athletics, particularly hockey, rise to a new position of public awareness and keeping the Bulldogs in the minds of the media and public is sports information director Bob Nygaard.

Now in his fourth year at the Minnesota-Duluth SID helm, Nygaard holds a B.A. degree in journalism from the University of Wisconsin-Eau Claire and served as an assistant sports information director in the Blugold Athletic Department. The 1983 graduate of UWEC had previously worked in the Minnesota-Duluth sports information office for two years while a student in 1979-81.

As the sports information director, the 26-year-old native Duluthian is in charge of supervising publicity, programs, press releases, records, press facilities and public relations for the 15-sport Bulldog athletic program.



Coach Sertich Comments

On the Strengths and Weaknesses of the 1986-87 Bulldogs

“Well, the strength obviously has to be the return of all but one of our defensemen from a year ago. We have four of five defensemen who played regularly in 1985-86 back plus two more who saw a good deal of playing time. However, we will definitely miss Norm Maciver and the ability he had to do so many things well, especially on the power play. I like the fact that we have two veteran goalies in Mike Cortes and John Hydeke back with a third (Rick Hayko) I'm sure that can contribute. Our primary weakness right now appears to be our lack of an apparent scoring attack. The five players that left us from last year's club accounted for nearly half of our goals (101 of 206) and points (270 of 541) and I don't know exactly how long to replace the likes of Matt Christensen (16-41=57), Norm Maciver (11-51=62), Mark Odnokon (16-29=45) and, of course, Brett Hull (52-32=84). But we do have some people who have proven they can score such as Sean Toomey, Skeeter Moore, Dave Cowan and Brian Johnson. So, we are limited in terms of strength up front, but, hopefully in time that will all work out.”

On the WCHA Race in 1986-87

“Historically, the teams stocked with the most veterans are usually the ones you will find slugging it out in the end and this year from what I have seen on rosters it looks like Northern Michigan and Minnesota have the most returning skaters. Wisconsin got wiped out pretty good, we got wiped out pretty good and Denver got wiped out pretty good in terms of personnel losses. Colorado College has a couple of key people coming back and if Doug Clarke returns to Colorado Springs from the Canadian National Team, the Tigers should have the makings for a pretty good hockey team. Michigan Tech also has a lot of people back and should be in the hunt and North Dakota should make quite a bit of noise as well due to the fact they had an outstanding recruiting year.”



On the Retainment of the One-Referee Officiating System

“I think it’s great. I think it can work and don’t believe it was the system’s fault for most of the officiating problems last year. It may have been lack of education perhaps on the officials part but they worked at it and I think it will be an effective system this year. I think Ron Foyt (the WCHA’s newly-appointed Referee-in-Chief) is going to do an outstanding job at monitoring and helping out the officials.”

On Underclassmen Leaving School Prematurely for the NHL

“I don’t think you can stand in a player’s way. What he wants to do with his life is solely his decision. However, I think that a player has to look at all the possibilities like, for instance, the important value of an education today. But if he receives a simply lucrative offer, like Brett Hull got from Calgary last spring, well then he should go. The thing that bothers me most in this situation is that it appears players leaving before their senior year is becoming more and more of a problem. It seems the pros are actively getting these kids now after a year or two and if you continue to lose too many of them, as has been the case with North Dakota in recent years, you can practically wipe out an entire class. I would have loved to have seen how strong we would have been last year if Billy Watson and Rick Kosti would have decided to come back. Last year we undoubtedly felt their absences and now we are going to have to do without Brett Hull.”

On Community Support for Bulldog Hockey

“It’s been outstanding and it seems it has gained every year. We want to be Northern Minnesota’s hockey team, not just Duluth’s hockey team and I think we certainly feel that. The continued growth we experienced is something we are going to have to live up to rather than just take for granted.”



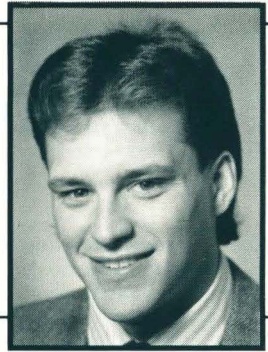
4

Guy Gosselin

Defense

5-11, 195, Senior

Rochester, MN



There might be better stickhandlers and playmakers, and skaters with superior offensive talents, but there are few in college hockey who play defense with more zeal than Guy "Goose" Gosselin. Granted an additional year of eligibility by the NCAA and WCHA last spring for an injury-marred freshman season (1982-83), Gosselin indeed has lived up to his reputation as a "defenseman's defenseman" during his tenure with the Bulldogs. However, the 1986-87 season may bring a few surprises. For the first time in three seasons, the hard-hitting Gosselin will be paired with someone other than two-time All-American Norm Maciver. Thus, the 1986-87 Bulldog captain may have to help alleviate the loss of Maciver by providing additional offensive punch. Looking at last year's final statistics, he apparently appears to be headed in the right direction. With two goals (including the game-winner in the Bulldogs' thrilling 4-3 victory at Denver on Feb. 1) and a career-high 16 assists to his credit in 1985-86, Gosselin doubled his previous three-year point total and earned a spot on the All-WCHA honorable mention team. One of the regulars on Minnesota-Duluth's penalty killing and power-play units, Gosselin participated in the National Sports Festival for the second year in a row this past summer in Houston, TX, and in the World Ice Hockey Championships in Moscow last April. Gosselin, who has scored three of his career goals against Wisconsin and has had four game-tying or game-winning goals at Minnesota-Duluth, is a 1982 graduate of Rochester's John Marshall High School where he was a two-time All-Big Nine Conference defenseman. Gosselin, who is majoring in physical education at Minnesota-Duluth, is the property of the Winnipeg Jets. He is the son of Gordon and Virginia Gosselin and was born on 1/6/64 in Rochester, MN.

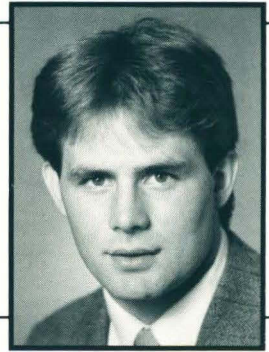
THE NUMBERS ON GOSSELIN

Year	GP	G	A	TP	P-PM
1982-83	4	0	0	0	0-0
1983-84	37	3	3	6	13-26
1984-85	47	3	7	10	25-50
1985-86	39	2	16	18	25-53
Total	127	8	26	34	63-129

18

Brian Johnson

Center
5-10, 180, Senior
Silver Bay, MN



For the past three years, Brian Johnson has never really had a position he could proudly call home. Now in his final year with the Bulldogs, that situation looks to be somewhat mended. Regarded as Minnesota-Duluth's most versatile player, Johnson is expected to skate at center in 1986-87, a move which should maximize his admirable offensive skills. The Bulldogs' alternate captain this season, Johnson was switched to center from defense prior to the Providence series last January and responded by finishing fifth among all Bulldogs (and second among this season's returnees) in scoring with 11 goals and 37 assists for 48 points, all career-bests. That point output, incidentally, doubled his scoring totals from his first two years at Minnesota-Duluth. He also was credited with seven power play goals to rank third on the Minnesota-Duluth club. Johnson will enter his final season with the Bulldogs at the No. 49 spot on the all-time Bulldog scoring list with 72 points. A member of the U.S. National Team which competed in the World Ice Hockey Championships last April in Moscow, Johnson is a two-time U.S. Sports Festival participant, skating in Houston, TX, this past summer. Johnson is lauded by Mike Sertich as a "dream to coach" and noted throughout the WCHA for his steady play. Plagued by a knee injury his sophomore year, Johnson skated in all 42 Minnesota-Duluth games a year ago, only one of five Bulldogs to do so. Johnson was a highly-recruited prep star while attending William Kelley High School in Silver Bay, MN. A two-time All-Lake Superior Conference selection, Johnson gained All-State (WCCO) honors as a senior in 1982-83 and was drafted by the Hartford Whalers that summer. Brian is the son of William and Irene Johnson and was born on 3/7/65 in Two Harbors, MN. He is majoring in physical education.

THE NUMBERS ON JOHNSON

Year	GP	G	A	TP	P-PM
1983-84	39	4	9	13	15-30
1984-85	38	1	10	11	12-24
1985-86	<u>42</u>	<u>11</u>	<u>37</u>	<u>48</u>	<u>9-18</u>
Total	119	16	56	72	36-72

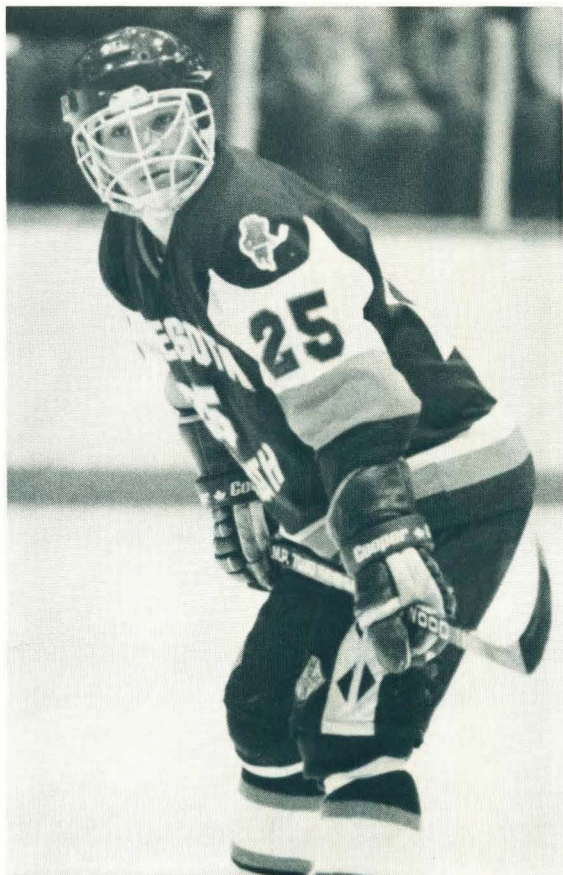
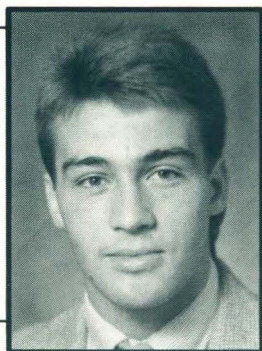
25

Jim Sprenger

Defense

5-11, 190, Senior

Cloquet, MN



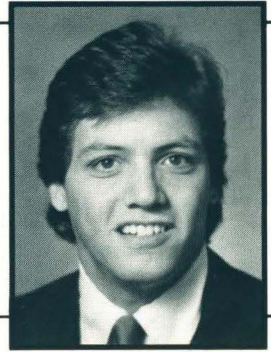
Perhaps one of the Bulldogs' most underrated players, Jim Sprenger has quietly become a leader of the Minnesota-Duluth defensive unit and appears to be on a collision course with stardom in 1986-87. Although not particularly large in terms of physical structure, Sprenger's ruggedness is apparent in the fact that he is the lone Bulldog to suit up in all 88 games the past two years and now has played in 130 (of a possible 131) Minnesota-Duluth contests during his three collegiate seasons. Offensively, Sprenger has shown increasing confidence with each passing year, culminating with a 17-point effort (6 goals and 11 assists) in 1985-86. His six goals included a two-marker performance against Boston College (10-1 triumph on Dec. 6) and single tallies versus Minnesota (5-2 win on Oct. 24), New Hampshire (5-3 victory on Nov. 16) and North Dakota (8-7 overtime loss on Jan. 11). An accomplished skater and fierce competitor, Sprenger was selected to play on the U.S. National Team in Moscow last April and made his second straight appearance at the U.S. Sports Festival in Houston, TX, in July. Sprenger, who will serve as the Bulldogs' alternate captain this winter, came to Minnesota-Duluth in 1983 via Cloquet High School where he was a three-year letterman with the hockey Lumberjacks. As a senior co-captain in 1982-83 he helped lead Cloquet to a 22-3-0 overall record and a berth in the Minnesota State High School Tournament. The two-time All-Lake Superior Conference, All-State (WCCO) pick also won three letters each in football and baseball at Cloquet. A member of the WCHA's All-Academic team as a freshman in 1983-84, Sprenger is pursuing a major in social studies at Minnesota-Duluth. The New York Islanders draftee is the son of Norman and Dee Sprenger and was born on 5/28/65 in Cloquet.

THE NUMBERS ON SPRENGER

Year	GP	G	A	TP	P-PM
1983-84	42	2	7	9	11-22
1984-85	46	6	12	18	15-30
1985-86	42	6	11	17	12-24
Total	130	14	30	44	38-76

1

Mike Cortes
Goaltender
5-10, 175, Sophomore
Duluth, MN



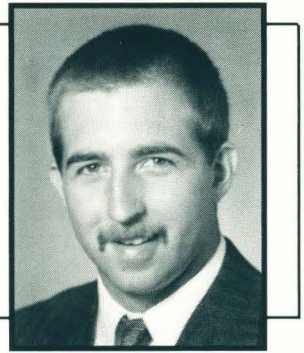
Sure, there are easier ways for one to break into the ranks of college hockey, but Mike Cortes was not in any position to take shortcuts when he made his collegiate goaltending debut last Oct. 18-19 in Grand Forks, ND, against the University of North Dakota. After all, the Winter Sports Center has never been known for its courteous treatment of opposing netminders. But in that span of two nights, Cortes just may have put together the best 120 minutes of his brief Bulldog career, turning back 52 of the 57 shots the Fighting Sioux sent his way en route to a pair of victories (5-4 and 4-1) and WCHA Player of the Week recognition. Cortes went on to play in 18 games in 1985-86, finishing with an 11-6-0 overall record, a 3.63 goals against average (the fifth best Minnesota-Duluth single season total ever) and a team-high .885 saves percentage mark. In WCHA play, he was fourth among all goalies with a goals against average of 3.44 and a record of 10-6-0, which included a shutout against Providence College (6-0) in Providence on Jan. 18. Cortes' .890 saves percentage figure ranked second in the WCHA behind the .901 mark turned in by Denver's Chris Olson. An extremely agile and mobile goalie with a solid glove hand, Cortes was red-shirted in his first year at Minnesota-Duluth (1984-85), after spending two years with Dubuque of the U.S. Hockey League prior to becoming a Bulldog. Before that, Cortes was a member of the Duluth East High School hockey contingent for three years and started as a senior in 1981-82 (and was a teammate of Skeeter Moore). The undecided major is the son of Bill Cortes and Judy Fritzell and was born on 6/19/64 in Minneapolis.

THE NUMBERS ON CORTES

Year	GP	W-L-T	GA	AVG	SVS	SVS%
1985-86	18	11-6-0	65	3.63	502	.885

17

Dave Cowan
Center
5-10, 185, Senior
Minneapolis, MN

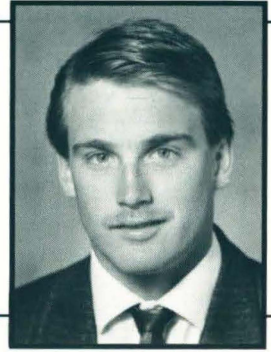


With almost half of the Bulldogs' offensive output lost from a year ago, the Minnesota-Duluth coaching staff is anxiously waiting for a few of its skaters to come out of the proverbial shadows and make a bit more noise in the scoring column. Dave Cowan is one of those individuals. Although his point production dipped some from his sophomore year, Cowan still managed a commendable nine goals and 16 assists for 25 points in 1985-86, eighth best among all Bulldogs. Paired with a number of different wings a year ago after centering the talented tandem of Brett Hull and Skeeter Moore for virtually all of his sophomore campaign, Cowan racked up his nine goals against eight different opponents in 1985-86 and had three-point nights versus both Colorado College (three assists on Dec. 13) and Boston University (one goal and a pair of assists on Nov. 29). Cowan, who has more than earned his reputation as one of the Bulldogs' finest when it comes to taking faceoffs, should finish among the top all-time 40 scorers at Minnesota-Duluth at his present pace. A gifted man with the puck who has refined his defensive game greatly since becoming a Bulldog, Cowan enjoyed a superb prep career at Washburn High School in Minneapolis, racking up 96 points as a junior and 72 points as a senior to rank as one of the top scorers in Minnesota. A four-time hockey letterman, Cowan was twice chosen the Millers' Most Valuable Player. He also earned three letters each in soccer and baseball at Washburn before graduating in 1983. Cowan, who was drafted by the Washington Capitals of the National Hockey League following his senior year, was born on 7/23/65 in Minneapolis. The communication major is the son of Robert and Judy Cowan.

THE NUMBERS ON COWAN

Year	GP	G	A	TP	P-PM
1983-84	12	1	2	3	4-8
1984-85	46	12	27	39	13-26
1985-86	41	9	16	25	4-8
Total	99	22	45	67	21-42

7

Mike DeAngelis**Defense****5-10, 185, Junior****Kamloops, B.C.**

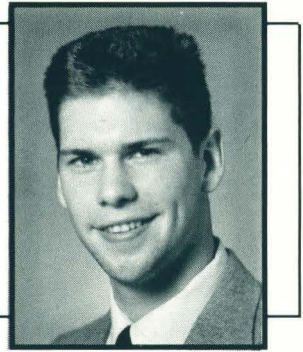
Another one of the reasons Coach Mike Sertich is so enthusiastic about the prospects for the Bulldog defense in 1986-87, Mike DeAngelis took part in a significant weight training program over the summer and should give Minnesota-Duluth plenty of support on the blueline. DeAngelis, or "Dinger" as he is known as by his hockey colleagues, has seen regular duty with the Bulldogs in each of his two seasons in Duluth (although he was sidelined for one game with a broken jaw after being hit on Feb. 5 by a shot by Brett Hull during a practice). As a sophomore in 1985-86, he was credited with one goal (in the second game of the year against U.S. International — an 8-7 Bulldog victory) and four assists for five points. While DeAngelis' ice time seems to increase with each season, the time he spends in the penalty box continues to fall. In fact, the soft-spoken communication major has been one of the least-penalized Bulldogs over the past two years with a mere eight infractions for 16 minutes. DeAngelis enrolled at Minnesota-Duluth after a brilliant stint with the Pentiction Knights of the British Columbia Junior Hockey League (where he was teammates with 1985-86 Bulldog scoring champion Brett Hull, now a Calgary Flame). DeAngelis collected 50 points with the Knights in 1983-84 and helped lead Pentiction to a runner-up spot in the final BCJHL standings. The nephew of Bob Bostrom, who skated with the Bulldogs in 1952-53, DeAngelis was born on 1/27/66 in Hope, British Columbia. He is the son of Frank and Sally DeAngelis.

THE NUMBERS ON DEANGELIS

Year	GP	G	A	TP	P-PM
1984-85	38	1	5	6	3-6
1985-86	34	1	4	5	5-10
Total	72	2	9	11	8-16

10

Joe DeLisle
Right Wing
6-2, 190, Junior
Shoreview, MN



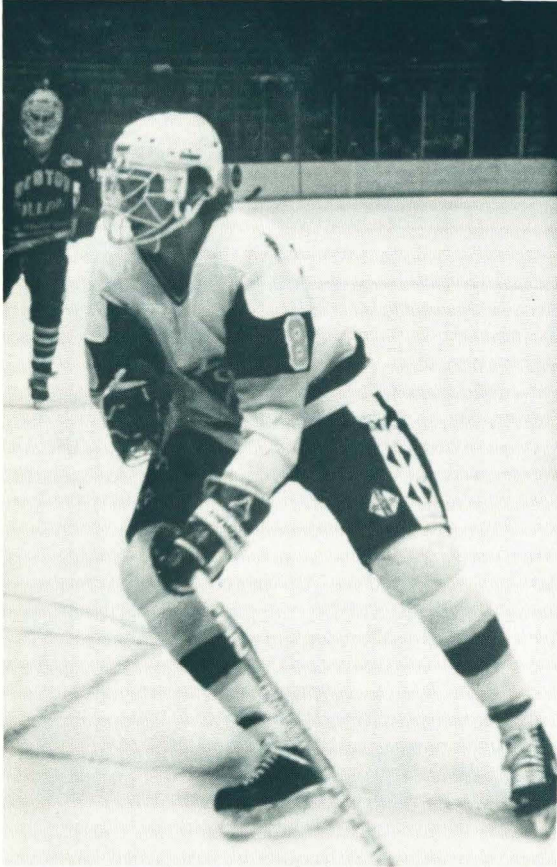
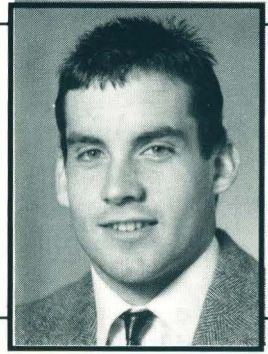
At first glance, it's hard to believe that Joe DeLisle, the easy-going guy who seems to have a smile permanently adorning his face, is the same Joe DeLisle who plays the game of hockey with a type of reckless abandon that has steadily become his trademark at Minnesota-Duluth. But he is. At 6-2, 190, DeLisle has simply used his impressive frame to its utmost advantage and in the process has powered his way into the regular Bulldog lineup as a right wing. After being red-shirted as a freshman during the 1983-84 season, DeLisle was relegated to limited duty the following year, suiting up in just three games and collecting one assist. Patience, it has been said, is a virtue and in 1985-86 DeLisle began to enjoy the fruits of his labor (he is generally recognized as one of the most diligent Bulldogs at practice sessions). In addition to notching the first four goals of his collegiate career (against Maine, 11/23; Providence College, 1/18; Wisconsin, 2/7; and Northern Michigan, 2/22), DeLisle also added six assists for 10 points while skating in 39 of the 42 Bulldog contests. Prior to becoming a Bulldog, DeLisle was a three-year hockey letterman at Totino-Grace High School in Fridley, MN, capturing a host of honors with the Eagles such as All-State (WCCO) and All-Don Bosco Conference laurels as a senior in 1982-83. The 1983 Totino-Grace graduate was a two-year Eagle team captain and also the team's Most Valuable Player in his final year. DeLisle, who is majoring in business at Minnesota-Duluth, was born on 9/7/64 in St. Paul, MN. He is the son of Thomas and Carol DeLisle.

THE NUMBERS ON DELISLE

Year	GP	G	A	TP	P-PM
1984-85	3	0	1	1	1-2
1985-86	39	4	6	10	16-32
Total	42	4	7	11	17-34

8

Brian Durand
Center
6-2, 195, Senior
Cloquet, MN



From the looks of things, this winter is shaping up to be a sort of go-for-broke season for one Brian Durand. After being shuffled in and out of the Bulldog lineup as both a freshman and sophomore and playing in 24 games each of those years, Durand appeared in just 11 Minnesota-Duluth outings in 1985-86. Since the Bulldogs did lose both Matt Christensen and Jim Toninato to graduation, the four regular center positions are virtually up for grabs and Durand would like nothing more than to spend his final collegiate campaign occupying one of the spots on a permanent basis. In his 11 games a year ago, Durand did muster one goal — the fourth score against Michigan Tech in the Bulldogs' 5-4 triumph over the Huskies on Jan. 4 at the Duluth Arena. Durand will enter his farewell year with 10 career points on four goals and six assists in 59 games. A big and rangy center iceman with good hands, Durand caught the eye of many a pro scout during a rich prep career at Cloquet High School. A three-time hockey letterman with the Lumberjacks, he topped Cloquet in scoring as a senior with 34 goals and 33 assists for 77 points en route to gaining All-Lake Superior Conference recognition. In addition, Durand also played three years with the Lumberjack football contingent as both a defensive back and a wide receiver and four seasons with the baseball unit as an outfielder and a pitcher. A teammate of current Bulldog defenseman Jim Sprenger, at Cloquet High School, Durand was a fourth round draft pick (76th selection overall) of the Minnesota North Stars in the summer of 1983. He is the son of Daniel and Phyllis Durand and was born on 8/5/65 in Duluth. He is majoring in business administration at Minnesota-Duluth.

THE NUMBERS ON DURAND

Year	GP	G	A	TP	P-PM
1983-84	24	2	5	7	2-4
1984-85	24	1	1	2	1-2
1985-86	11	1	0	1	2-4
Total	59	4	6	10	5-10

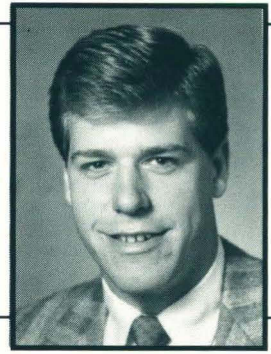
16

Bruce Fishback

Right Wing

6-2, 220, Senior

White Bear Lake, MN



Now in the so-called twilight of his collegiate playing career, Bruce Fishback will be one of many Bulldogs hoping to secure an established residence, so to speak, at right wing in this, his final swing with Minnesota-Duluth. While Fishback has been praised by the Bulldog coaching staff for his persistent hustle in both ends of the rink and his ability to stay away from the penalty box (he has the fewest infractions of any Bulldog regular over the past two seasons), his lack of numbers in the scoring department is, at the same time, an obvious concern. In a career-high 37 games last winter, Fishback, who broke his jaw in the Boston University series, collected two goals (vs. Alaska-Anchorage on Nov. 9 and Michigan Tech on Jan. 3) and three assists for five points, just a slight increase over his previous year-end totals of three points in 1984-85 and four points in 1983-84. Fishback is the younger brother of Dan Fishback, a crafty center who concluded his superb four-year ice career with the Bulldogs in 1982-83, just before Dan's arrival in Duluth. A 1983 graduate of White Bear Lake's Mariner High School, Fishback earned three varsity letters in hockey for the Dolphins and was a major figure on the Mariner puck squad that went 18-5-0 and captured the St. Paul Suburban Conference title in 1982-83 and went on to finish second at the Minnesota State High School Tournament. Fishback was an honor student at Mariner and that classroom excellence has continued at Minnesota-Duluth. Last year he was selected to the WCHA's All-Academic team for the second straight time (the only Minnesota-Duluth player to ever do so). A business major at Minnesota-Duluth, Fishback's professional rights belong to the Los Angeles Kings. He is the son of Ron and Louise Fishback and was born on 1/19/65 in St. Paul, MN.

THE NUMBERS ON FISHBACK

Year	GP	G	A	TP	P-PM
1983-84	13	2	2	4	2-4
1984-85	30	2	1	3	4-8
1985-86	37	2	3	5	2-4
Total	80	6	6	12	8-16

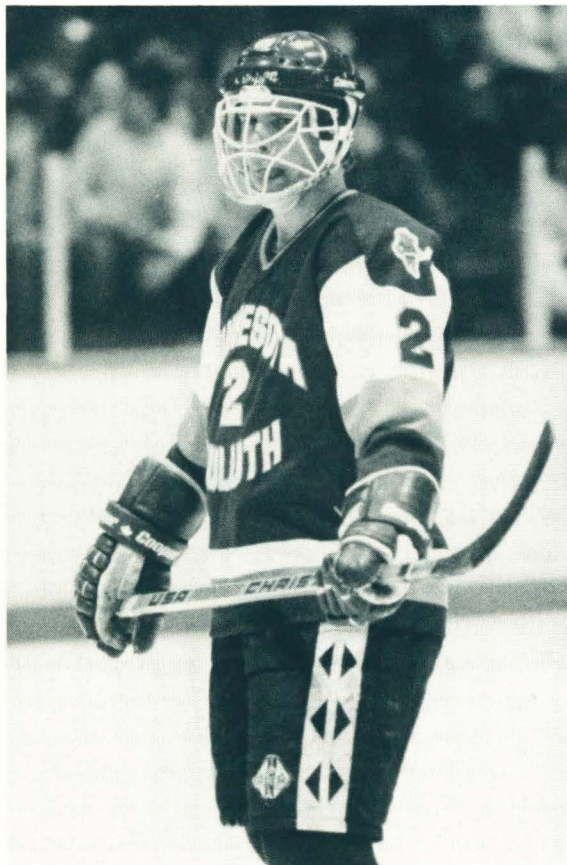
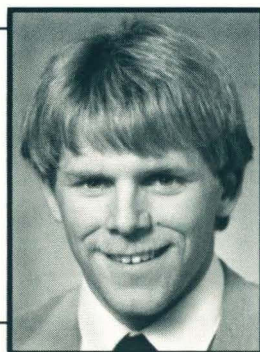
2

Tom Hanson

Defense

5-11, 175, Sophomore

Hibbing, MN



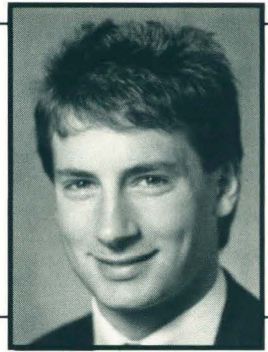
The town of Hibbing, nestled in the middle of northern Minnesota's Iron Range, has more than produced its share of top-flight high school hockey stars that have gone on to enjoy prosperous collegiate careers. Although he is not exactly yet proven himself worthy to rank alongside some of the select Hibbing natives to make their marks in the college arena (ala Mike Polich and the Micheletti brothers), Tom Hanson certainly may possess near equal potential. Because of the overflow of defenseman Coach Sertich and Co. had to work with a year ago, Hanson's debut as a Bulldog was put on hold more or less. In fact, the smooth-skating blueliner didn't make his inaugural appearance with Minnesota-Duluth until the ninth game of the 1985-86 season against the University of Alaska-Anchorage. However, taking advantage of the opportunity when it came knocking, Hanson was credited with an assist in that initial outing and wound up his freshman year with one goal (vs. Boston College on Dec. 7) and two assists in 28 games (which was more games than any other freshman defenseman). As a finalist in Minnesota's Mr. Hockey competition in 1984-85, Hanson had plenty of impressive high school credentials when he entered Minnesota-Duluth last fall. As a senior, the three-time Hibbing High School letterman collected seven goals and 23 assists for 30 points in gaining All-State (WCCO), All-Iron Range Conference and All-Duluth News-Tribune Tri-State recognition. In his last two years as a Bluejacket, Hanson helped spark Hibbing to a pair of Minnesota State High School Tournament appearances. Tom is the son of Harold and Joyce Hanson and was born on 3/8/66 in Hibbing. He is undecided on a major.

THE NUMBERS ON HANSON

Year	GP	G	A	TP	P-PM
1985-86	28	1	2	3	3-6

31

John Hyduke
Goaltender
5-10, 160, Sophomore
Hibbing, MN



He came to Minnesota-Duluth with plenty of promise, a player who pretty much was the center of attention when ever there was any talk surrounding high school goalies in 1984-85. It is generally assumed that one's transition from the prep game to the ranks of big-time college hockey is by no means a simple endeavor, but throughout most of the 1985-86 season, John Hyduke made the switch seem almost elementary. In addition to posting a reputable 14-7-3 individual record as a rookie with the Bulldogs, Hyduke also turned in the fourth lowest goals against average in Minnesota-Duluth history, 3.60. He was equal to the task in WCHA play as well, winding up third in the league goaltending statistics with a 3.39 goals against mark. During a nine-game stretch in mid-December through early January, Hyduke was one of the hottest goaltenders in college hockey, winning seven games while starting in all nine contests. At the end of the season, Hyduke, who garnered an assist in the Bulldogs' 8-4 WCHA playoff win over Northern Michigan, was justly rewarded with Bulldog Freshman of the Year honors while also winning a spot on the All-WCHA's honorable mention group. Noted for his on-ice savvy, Hyduke was a two-year starter at Hibbing High School and as a senior with the Bluejackets, he was selected to both the WCCO All-State and Duluth News-Tribune All-Tri State teams. Hibbing's 1985 Homecoming King, Hyduke was the backbone of two Bluejacket clubs that made Minnesota State Tournament appearances in 1984 and 1985. The two year Bluejacket baseball letterman (second base) was drafted by the Los Angeles Kings in the summer of 1985. He is the son of George and Evelyn Hyduke and was born on 6/23/67 in Hibbing.

THE NUMBERS ON HYDUKE

Year	GP	W-L-T	GA	AVG	SVS	SVS%
1985-86	24	14-7-3	84	3.60	572	.872

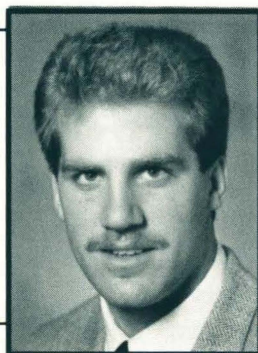
24

Darin Illikainen

Left Wing

6-4, 205, Junior

Hermantown, MN



Stiff competition was aplenty at the left wing position last winter and Darin Illikainen may have been simply a victim of the old numbers game when he watched the first quarter of the year from the stands. But with patience and hard work in practice he did eventually crack the lineup and skated in the final 30 games of the season at left wing. In all, Illikainen scored six goals and added an equal number of assists for 12 points in his first full season as a Bulldog. On Jan. 17, 1986, he enjoyed the first two-goal night of his young career, collecting a pair of scores in Minnesota-Duluth's 6-3 WCHA/Hockey East triumph over Providence College. Earlier in the year against Boston College (Dec. 6) he also notched his initial game-winning goal in a Bulldog uniform. The largest player on the Bulldog roster (6-4, 205), Illikainen is a skilled stickhandler and a solid body checker as well. With a year of regular playing time under his proverbial belt, he will undoubtedly be looked to for extra scoring production this winter. Illikainen was red-shirted as a freshman in 1983-84, and saw limited duty the following year (one goal and two assists in three games). The winner of this year's annual mile run (on the first day of dryland training), Illikainen elected to pursue hockey at the collegiate level following graduation from Hermantown High School in 1983 despite being sought by a number of college scouts for his football talents. An honor roll student at Hermantown, Illikainen paced the hockey Hawks in scoring his last three seasons and was drafted by the New York Islanders the summer after his senior year. The marketing major is the son of Allen and Donna Illikainen and was born on 4/11/65 in Duluth.

THE NUMBERS ON ILLIKAINEN

Year	GP	G	A	TP	P-PM
1984-85	11	1	2	3	0-0
1985-86	31	6	6	12	3-6
Total	42	7	8	15	3-6

23

Pat Janostin

Defense

6-0, 175, Sophomore
Hafford, SASK



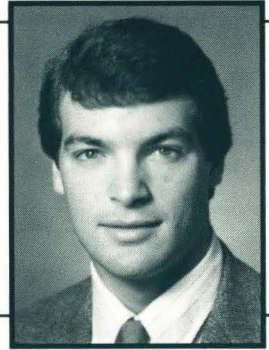
Yet another Bulldog who received ample playing time as a freshman last winter, Pat Janostin enters 1986-87 with hopes of continuing that on-ice progress. In 26 games a year ago, Janostin collected one goal and two assists for three points and although those are not exactly the numbers that legends are made from, he did display great promise with his defensive game. Janostin, whose lone collegiate goal came against the University of North Dakota on Jan. 11 (an 8-7 Bulldog loss) is a physical player who is particularly strong at clearly out the opposition in front of the Bulldog net. Offensively, Janostin also possesses some obvious potential as evident by the 37 points (seven goals and 30 assists) he scored as a co-captain with Notre Dame College in Wilcox, SASK, in 1984-85. The property of the New York Rangers (fourth round and 70th pick overall in the 1985 NHL summer draft), Janostin was also Notre Dame's starting quarterback for two years in addition to toiling four years with the hockey Hounds. He is the son of Ben and Jeanette Janostin and was born on 11/17/66 in Battleford, SASK. Janostin is presently undecided on a major at Minnesota-Duluth.

THE NUMBERS ON JANOSTIN

Year	GP	G	A	TP	P-PM
1985-86	26	1	2	3	2-4

19

Tom Lorentz
Right Wing
5-11, 175, Sophomore
West St. Paul



After he scored a goal in his first collegiate game against U.S. International in last year's season opener, Tom Lorentz appeared to be comfortably on his way to a prosperous freshman campaign. But with the Bulldogs' overflowing surplus of forwards, Lorentz's debut year unfortunately never really got going. In fact, after a stretch where he skated in 15 straight games through the Colorado College series in mid-December, Lorentz did not play another minute the rest of the way. In all, he still collected four goals (including a pair against Alaska-Anchorage on Nov. 8) and one assist for five points in 17 games. Projected as either a right wing and possibly a center in 1985-86, Lorentz's career literally got off on the wrong foot two years ago when he shattered his left kneecap in the Bulldog' pre-season intra-squad game. The mishap sidelined the rangy right winger for six weeks and he was eventually red-shirted. However, Lorentz did travel to the Soviet Union that December with the Bulldogs and notched a goal in the one game he played — against the Junior Red Army Team in Leningrad. A terrific all-around athlete, Lorentz completed his second season with the Minnesota-Duluth baseball team last spring, pitching in seven games and registering a 1-1 record and a 4.85 earned run average. A 1984 graduate of Archbishop Brady High School in St. Paul, Lorentz led the Don Bosco Conference in scoring as both a junior and a senior en route to earning All-Conference and Bronco Most Valuable Player honors. He is the son of Jerry and Pat Lorentz and was born on 11/18/65 in St. Paul. He is presently pursuing a major in business at Minnesota-Duluth.

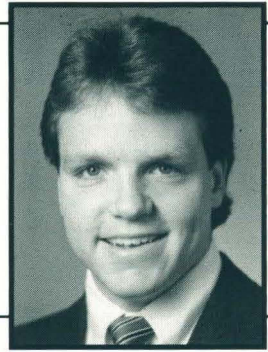
THE NUMBERS ON LORENTZ

Year	GP	G	A	TP	P-PM
1985-86	17	4	1	5	3-6

20

Skeeter Moore

Left Wing
5-7, 160, Senior
Duluth, MN



When Scott "Skeeter" Moore broke in with the Bulldogs three winters ago, his diminutive stature and underdog demeanor made him an instant hit with the Minnesota-Duluth hockey faithful. While the chants "Leave Skeeter Alone" have now all but subsided at the Duluth Arena, Moore continues to remain perhaps the Bulldogs' most popular player for one very good reason — his ability to score. After racking up a then career-best 45 points as a sophomore, Moore bettered that total by nearly 33 percent in 1985-86, collecting 28 goals and 41 assists for 69 points to rank a second on the Minnesota-Duluth scoring charts behind Brett Hull. Moore, who also rang up 15 power play goals and a team-high three short-handed tallies, was 10th among all WCHA skaters with 50 points in 34 games. The Bulldogs' top returning scorer recorded hat tricks on two occasions a year ago and picked up at least one point in each of the first 19 games of the season. Although the 1986-87 campaign will mark the first time in two years that Moore will not have the luxury of having goal-happy Brett Hull for a linemate, the Minnesota-Duluth coaching staff still feels the hustling left winger will produce another high point yield. Presently the Bulldogs' 25th all-time leading scorer, Moore has served as one of Minnesota-Duluth's top penalty killers during his three seasons and this year he will again see double duty on the power play unit as well. The 1986 U.S. Sports Festival participant first joined the Bulldogs in 1982 but after half a season of practicing with Minnesota-Duluth he latched on with Dubuque of the U.S. Hockey League. A 1982 graduate of Duluth East High School, Moore ran in, and finished, Grandma's Marathon this past June in

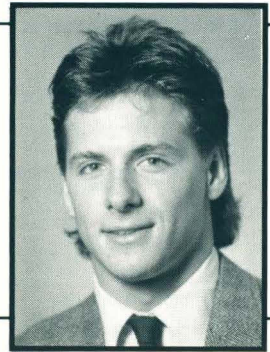
Duluth. The communications major is the son of Richard and Suzanne Moore and was born on 7/16/63 in Colorado.

THE NUMBERS ON MOORE

Year	GP	G	A	TP	P-PM
1983-84	28	3	8	11	5-10
1984-85	40	14	31	45	18-44
1985-86	42	28	41	69	18-52
Total	110	45	80	125	41-106

11

Brian Nelson
Left Wing/Center
6-0, 175, Junior
Willmar, MN



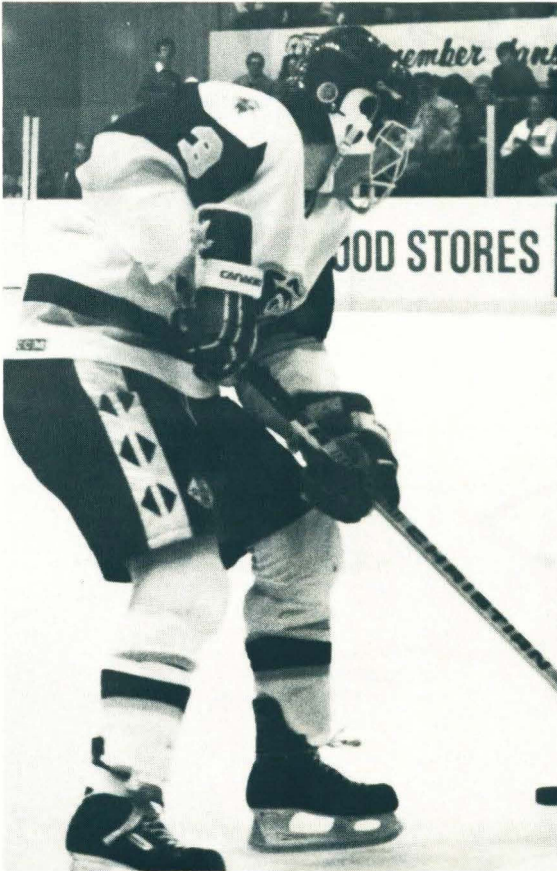
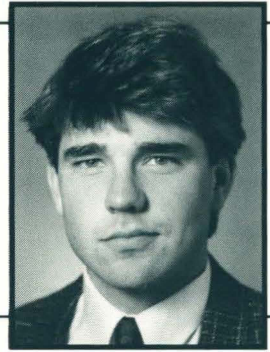
After being virtually idle as a freshman (three games and no points) Brian Nelson's playing time increased dramatically a year ago and this season the swift-skating forward should be in the thick of things in the hunt for extended on-ice duty. Capable of handling any forward position, Nelson primarily was used at left wing in 1985-86, chalking up one goal (in the Bulldogs' 6-0 blanking of Providence College on Jan. 18) and two assists for three points in 14 games (including Minnesota-Duluth's WCHA playoff quarter final opener against Northern Michigan University). A hard worker who needs to touch up on his shooting and passing to become a better all-around player, Nelson does possess admirable quickness and is tabbed as a type of skater who has a nose for the puck. He showed that as a prep while attending Willmar High School, where he lettered in hockey for three seasons before arriving on the Minnesota-Duluth campus in the fall of 1984. The lone Bulldog in history to hail from Willmar, Nelson was a two-time All-Central Lakes Conference selection (1982-83 and 1983-84) and as a senior was named to the WCCO All-State team while captaining the Cardinals. A shortstop with the Willmar varsity baseball team for two seasons, Nelson was chosen by the New York Rangers in the NHL's annual draft in 1984 (eighth round) and competed for the U.S. Junior Team at the World Championships in Lake Placid, NY, that same summer. The 1984 Willmar HS graduate is the son of Ron and Vonnie Nelson and was born on 10/5/65 in Willmar. He is pursuing a degree in physical education at Minnesota-Duluth.

THE NUMBERS ON NELSON

Year	GP	G	A	TP	P-PM
1984-85	3	0	0	0	1-2
1985-86	14	1	2	3	1-2
Total	17	1	2	3	2-4

3

Rob Pallin
Defense
5-11, 180, Sophomore
Chisholm, MN



With a year of seasoning tucked away, Rob Pallin's value to the Minnesota-Duluth hockey program is expected to escalate in 1986-87. As one of three freshman to work the Bulldog blueline last season, Pallin skated in 19 games for Minnesota-Duluth and came away with no goals and one assist (versus Colorado College on Dec. 14 at the Duluth Arena). Although he is not equipped with an extensively large frame, Pallin's stickhandling deftness makes him a plus offensively. However, the Minnesota-Duluth coaching staff feels he does need to refine his game in the Bulldogs' end of the rink to become a more complete defenseman. Pallin took the U.S. Hockey League route to Minnesota-Duluth, a practice used by a handful of Bulldogs in recent times including former standouts Jim Johnson (now with the Pittsburgh Penguins), Bob Mason (now with the Washington Capitals), and present Bulldogs Skeeter Moore and Mike Cortes. From 1983-85, he skated for the Austin Mavericks and still managed to graduate from Chisholm High School on time (he attended Austin High School the winters of both his junior and senior years while playing for the Mavericks). Pallin collected 65 points on 19 goals and 46 assists for Austin in 1985-86 en route to making the All-USHL second team. He also competed for the USHL all-star contingent that ventured to Switzerland in 1985. A four-year baseball letterman (pitcher) and one-year football letterwinner (quarterback) at Chisholm, Rob is the son of David and Charlotte Pallin and was born on 11/19/66 in Chisholm, MN. He is majoring in elementary education at Minnesota-Duluth.

THE NUMBERS ON PALLIN

Year	GP	G	A	TP	P-PM
1985-86	19	0	1	1	4-8

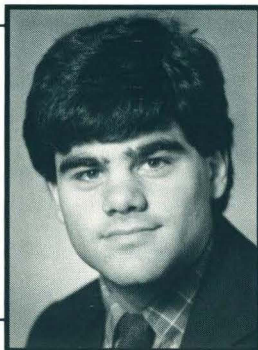
26

Terry Shold

Left Wing

6-2, 180, Sophomore

International Falls, MN



Terry Shold may not exactly be the most verbose person in the land. But, on the ice, he lets his playing do most of the talking with his speak-softly-and-carry-a-big-stick approach to the game. Shold's claim to trivial fame as a rookie last year was that he scored the Bulldogs' first goal of the 1985-86 season, a feat he accomplished on his second collegiate ice shift against U.S. International University on Oct. 11 at the Duluth Arena. He went on to skate in the next seven contests and 10 more along the way (including the final three) to wind up with 18 games overall (and one goal and one assist for two points). Shold made marked improvements during his debut session and the Bulldogs are hoping that trend continues right on through the 1986-87 season as well. The lumbering winger came to Minnesota-Duluth from International Falls, MN, a geographically small area which has harvested some big names for the Bulldogs in the past like Bob Mason and Tom Herzig to name a few. Shold topped the entire Iron Range Conference in scoring as a senior while serving as the Broncos' team captain. A three-year regular at International Falls, Shold earned a spot on the prestigious All-Iron Range Conference and the Duluth News-Tribune All-Area teams in 1984-85 and was a participant in the 1985 Minnesota High School All-Star game. He was a member of the National Honor Society at IFHS and continues to be a standout in the classroom. He is the son of Wally and Gail Shold and was born on 7/29/66 in Grand Marais, MN. An elementary education major at Minnesota-Duluth, Shold is the property of the New Jersey Devils of the National Hockey League.

THE NUMBERS ON SHOLD

Year	GP	G	A	TP	P-PM
1985-86	18	1	1	2	1-2

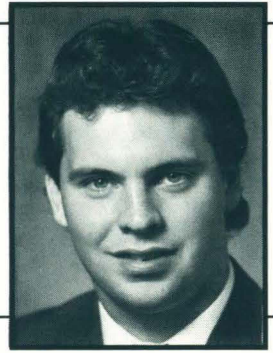
22

Wayne Smith

Center

5-11, 185, Sophomore

Gloucester, ONT



What set Wayne Smith apart from almost all of the 50 or so freshman in the Western Collegiate Hockey Association last season had to do strictly with age. Since he did not turn 18 until last April, Smith was officially the youngest player in the entire WCHA during the 1985-86 season (he actually shared that distinction with Scott White of Michigan Tech who also celebrated his 18th birthday on April 21, 1986). Seeing spot duty as a rookie, Smith notched a pair of goals (against the University of Maine on Nov. 22 and Boston College on Dec. 6) and no assists in his collegiate premier. A fine two-way player, Smith should definitely present a serious challenge for one of the regular center spots this winter. What the Bulldogs are hoping is for Smith to regain his magic scoring touch which made him a hot commodity in the Canadien junior circles. Indeed, as a member of the Gloucester Rangers of the Central Junior Hockey League in 1984-85, Smith garnered 73 points on 31 goals and 42 assists to rank second among his teammates in scoring. For his efforts, he was accorded the Molson Cup as Gloucester's Most Valuable Player. Smith was named to the CJHL all-star squad that same year and competed for Team Ontario in an exhibition game against the Soviet Union Nationals. The business administration major is the son of Wayne and Phyllis Smith and was born on 4/21/68 in Ottawa.

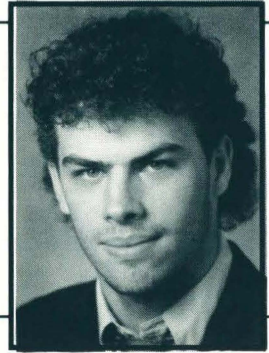
THE NUMBERS ON SMITH

Year	GP	G	A	TP	P-PM
1985-86	11	2	0	2	2-4

12

Sean Toomey

Right Wing
6-2, 205, Senior
St. Paul, MN



The potential, of course, was there all along. A year ago, he finally unleashed it. And now that Sean Toomey has revealed his magnificent scoring talents to most of the college hockey community, Minnesota-Duluth is looking to him to help pick up some of the offensive slack left by the departures of Brett Hull, Matt Christensen and Norm Maciver. Toomey's sudden rise in the scoring columns last winter did not exactly come as a complete surprise to the Bulldog coaching staff who felt he always had the makings to be a prolific goal scorer. In 1985-86, he got off to the best start of his Bulldog career, collecting five goals and one assist in the season's first five games before being sidelined for over a month with a broken thumb incurred against Minnesota. Despite missing nine games during that time, Toomey, who has one of the hardest shots of any Bulldog, still wound up with 23 goals (third highest among Bulldogs) and 11 assists for 34 points. He also registered three game-winning goals (against North Dakota on Oct. 19, Boston University on Nov. 29, and Northern Michigan in the WCHA playoffs). The lone Bulldog to score a short-handed goal besides Skeeter Moore last season, Toomey was selected as Minnesota-Duluth's Most Improved Player in 1985-86. As a sophomore, he racked up 13 points in 43 games after a collar bone injury limited his playing time to just 29 games. Toomey, who participated in the U.S. Sports Festival in Houston, TX, this past summer, is a native of St. Paul, MN, and attended Cretin High School, where, as a senior, he topped the Raider hockey crew in scoring with 80 points in 22 games. An-All-St. Paul Conference pick that season, Toomey was chosen by the Minnesota North Stars in the 1983 draft. The communications major is the son of John and Joan Toomey and was born on 6/27/65 in St. Paul.

THE NUMBERS ON TOOMEY

Year	GP	G	A	TP	P-PM
1983-84	29	3	5	8	4-8
1984-85	43	6	7	13	6-12
1985-86	33	23	11	34	5-10
Total	105	32	23	55	15-30

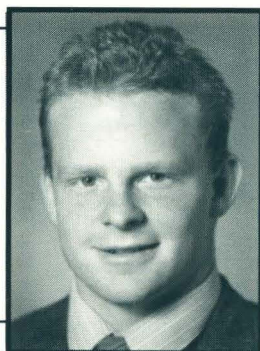
15

Dan Tousignant

Center

5-8, 160, Senior

Bloomington, MN



A pesky forechecker and smallest member of the 1986-87 Bulldogs, Dan Tousignant joins a handful of hopefuls who will be contesting for steady employment this year. Donning the unlucky No. 13 Minnesota Duluth jersey (he's switched this season to the more conventional No. 15), Tousignant began his college tenure as a regular of sorts, suiting up in 10 of the Bulldogs' initial 11 games. However, it was virtually not until the final regular season series of the year against Northern Michigan in Marquette, MI, that Tousignant received ice time again (he did skate in one game — Boston University — during that interim). In all, he completed his first year at Minnesota-Duluth with 17 games and collected one goal (in the last game of the year versus Denver in the WCHA playoff semifinals) and no assists for one point. Projected as a possible penalty killer, Tousignant came to Minnesota-Duluth with rave reviews after a sparkling prep career at Kennedy High School in Bloomington, MN. A four-year hockey letterman with the Eagles, Tousignant was Kennedy's leading scorer as a senior in 1984-85 with 34 points on 17 goals and 17 assists. Tousignant was also the top point getter in the competitive Lake South Conference that year en route to earning All-Conference and team MVP recognition. He concluded his career at Kennedy with 122 points, the highest total ever turned in by an Eagle skater. A three-year starting center fielder with the Kennedy baseball contingent, Dan is the son of Len and Ginny Tousignant and was born on 10/5/65 in Englewood, NJ. He is pursuing a degree in business at Minnesota-Duluth.

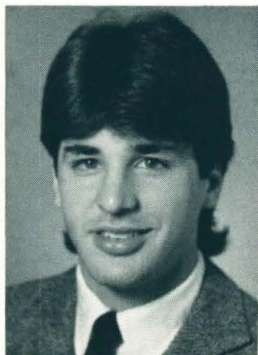
THE NUMBERS ON TOUSIGNANT

Year	GP	G	A	TP	P-PM
1985-86	17	1	0	1	2-4

6 Bob Alexander

RW 5-11 175 Jr Apple Valley, MN

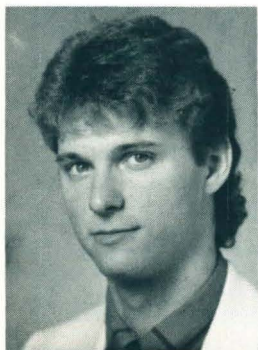
Just when everything was pretty much going his way, Bob Alexander suddenly ran into a major road block on the night of November 23, 1985. On the second shift of a Hockey East/WCHA contest with Maine, Alexander took a jarring body check that resulted in a separated shoulder for the first-year Bulldog. Although he played in one game after that, the injury more or less curtailed the 1985-86 season for Alexander, who had sat out the entire previous year after transferring from the University of Minnesota. Alexander, who skated with the Bulldogs' so-called second line during his brief stint, wrapped up his opening campaign at Minnesota-Duluth with one goal (versus Maine on Nov. 22) and one assist in six games. As a freshman at Minnesota in 1983-84, he logged two assists in three games. A bonifide candidate for a starting right or left wing position this winter, Alexander was a four-year hockey letterman at Rosemount High School. Used mainly as a defenseman at Rosemount, he set school marks for both points in a season (64) and a career (170) in 1982-83. He is the son of Firmin and Janet Alexander and was born on 10/31/64 in St. Paul. The communications major is the property of the New York Rangers.



13 Barry Chyzowski

C 6-0 170 Fr Edmonton, ALTA

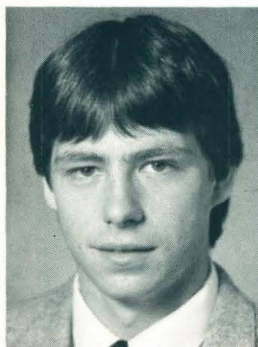
A terrific playmaker who faintly resembles a young Matt Christensen with his tall, slender physique, Barry Chyzowski is one of two Minnesota-Duluth freshman recruits from north of the border. With the center position virtually up for grabs, he could very well give a few veterans a run for their money. A year ago as a center with the St. Albert Saints of the Alberta Junior Hockey League, Chyzowski finished third among his teammates in scoring and ninth in the AJHL. An avid lacrosse player in the summer months in Edmonton, he is the younger brother of a name familiar to those that follow the WCHA closely — Ron Chyzowski who will be a senior wing this winter Northern Michigan University. Chyzowski was selected in the eighth round (155th overall) by the New York Rangers in this summer's NHL draft. A business major at Minnesota-Duluth, he is the son of Horace and Evelyn Chyzowski and was born on 5/25/68 in Edmonton, ALTA.



30 Rick Hayko

G 5-11 175 So Regina, SASK

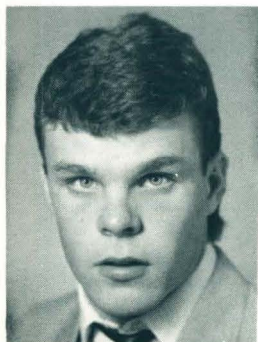
With fellow newcomers Mike Cortes and John Hyduke alternating hot streaks, Rick Hayko was, for all practical purposes, the odd-man out in 1985-86. Hayko, who recorded 26 saves and a win against U. S. International in the second game of the season in his lone appearance as a freshman, is not about to be counted out, however. With really no guaranteed jobs at any position this winter, the soft-spoken lefty will more than likely command a great deal of attention in the pre-season camp. Hayko's background is very similar to that of former Bulldog All-American goaltender Rick Kostj: both had outstanding junior careers in Weyburn, SASK, before joining Minnesota-Duluth. Hayko compiled a 3.11 goals against average with the Weyburn Red Wings in 1984-85 en route to winning the Harold L. Jones Trophy as the Saskatchewan Amateur Junior Hockey League's top netminder. He was second in the SAJHL with a 31-12-3 record, first in shutouts with four, and also turned in a dazzling .908 goals against average. An agile goalie who was was known throughout the SAJHL for his tough play in clutch situations, Hayko is undecided on a major at Minnesota-Duluth. He is the son of Merv and Doreen Hayko and was born on 2/66/66 in Regina, SASK.

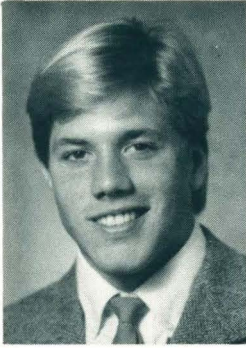


6 Dale Jago

D 5-9 180 Fr Reston, MANIT

A former teammate of Minnesota-Duluth sophomore Pat Janostin at Athol Murray College of Notre Dame, Dale Jago is hoping to follow in Janostin's footsteps and crack the Bulldog lineup at defense. Jago captained the Hounds in both 1984-85 and 1985-86 and was their plus-minus leader (+67) last year while helping spark Notre Dame to the National Air Canada Cup title. Voted Player of the Game in the Air Canada Cup finals, Jago also was bestowed with Notre Dame's Hockey Athlete of the Year Award last spring. A three-year performer for Barry MacKenzie's Hounds, Jago is an offensive-minded defenseman who could turn out to be quite an asset with the Bulldogs if he can get some early experience. He is the son of George and Donna Jago and was born on 6/8/68 (making him the youngest Bulldog on the 1986-87 roster) in Reston, MANIT. He has not yet decided a field of study at Minnesota-Duluth.

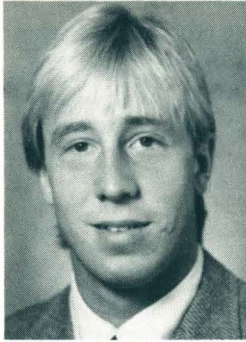




14 Ross Johnson

C/LW 5-11 175 Fr Rochester, MN

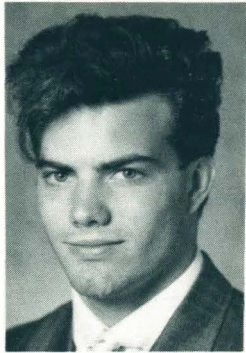
Although he made his hockey residence primarily at defense during his three seasons at Rochester Mayo High School, Ross Johnson will be shifted to the front lines at Minnesota-Duluth as either a center or a wing. An extremely talented overall athlete who stands a definite chance at a starting berth this winter, Johnson is the first Minnesota-Duluth skater Mayo High School has ever produced. While a hockey Spartan, Johnson was named to the All-Big Nine Conference honor team three straight seasons and, in 1985-86 paced Mayo in scoring with 75 points on 46 goals and 28 assists. A 1985 draft pick of the Minnesota North Stars (eighth round, 153rd overall), Johnson was also named to the Team Minnesota high school select group last spring. He is the son of Robert and Joanne Johnson and was born on 8/5/67 in Green Bay, WI. He has not yet decided on a major at Minnesota-Duluth.



29 Paul Roff

RW/C 6-1 190 Jr Edina, MN

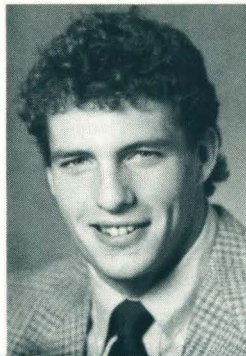
Because of the WCHA's rule regarding transfers, Paul Roff was forced to sit out the 1985-86 season (although he did practice regularly with the Bulldogs) after coming to Minnesota-Duluth from Ohio State University last fall. Roff labored two seasons with the Buckeyes of the Central Collegiate Hockey Association, winding up with 10 points (three goals and seven assists) in 41 games as a freshman and 1 point (one assist) in 21 games the following year. Deceivingly quick and a good corners man, Roff will perhaps gain instant notoriety this winter in the fact that he will sport the No. 29 jersey last worn by one Brett Hull. A 1983 Edina High School graduate and member of the 1982 state champion Hornets, Roff is the NHL property of the Minnesota-North Stars. The three-year Edina High School hockey letterman is the son of Jess and Phyllis Roff and was born on 2/3/65 in Minneapolis. He is majoring in business administration/management at Minnesota-Duluth.



21 Pat Scanlon

RW 6-1 180 Fr St. Paul, MN

Listed as a potential darkhorse among the freshmen crop, Pat Scanlon was noted for his solid and consistent play on both offense and defense while a wing for four seasons with Cretin High School in St. Paul. As the Raider captain as a junior and a senior, Scanlon twice was chosen to the All-St. Paul City Conference, and, in 1985-86 he collected 25 goals and 22 assists for 47 points. But his athletic heroics did not stop there. In baseball, where (like hockey) he won three letters, Scanlon was a three-time All-SPCC pick and last spring batted a school-record .554 while also taking home All-State honors as well. Scanlon also duplicated the aforementioned feats in football, gaining All-SPCC recognition as a junior and senior at wide receiver. A ninth round draft pick (177th overall) by the New York Rangers last summer, he is the son of Henry and Rosemary Scanlon and was born on 1/6/67 in St. Paul, MN. Scanlon is majoring in business at Minnesota-Duluth.



27 Sandy Smith

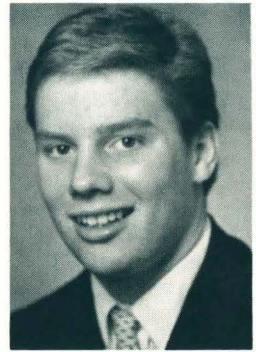
C 5-11 190 Fr Brainerd, MN

One of the quickest high school players in all of Minnesota last year, James Sandy Smith appears to be fully recovered from knee ailments which bothered him as a senior at Brainerd High School and should press for a starting center spot this winter. Smith was a four-year hockey letterman with the Warriors of Brainerd, alternating between center and defense. In 1985-86 he scored 21 goals and 19 assists for 41 points to lead all Warriors and captured WCCO All-State and All-Central Lakes Conference distinction. Recruited by many NCAA Division I football schools as well as several big-time hockey institutions, Smith captained the football Warriors in 1985 and finished first among his teammates in both rushing and scoring while working as a running back and linebacker. The 1986 draftee of the Pittsburgh Penguins (fifth round, 88th overall) is the son of Pat and Shirley Smith and was born on 10/23/67 in Brainerd. He is undecided on a major.

28 Dennis Vaske

D 6-2 215 Fr Plymouth, MN

A strong, sturdy defenseman who is incredibly quick and mobile for his size, Dennis Vaske was one of the most sought-after prep players in the state a year ago. Selected by the New York Islanders in the second round (38th overall) of last summer's NHL draft (the lowest pick of any current Bulldog in any draft) Vaske joined five other Bulldogs at the U.S. Sports Festival in Houston this past July after completing a superb hockey stint at Armstrong High School in Plymouth. In addition to earning a spot on both the WCCO All-State and All-Lake North Conference teams in 1985-86, Vaske also was tabbed the Falcons' Most Valuable Player. In all, he was a three-sport letterman at Armstrong, competing in baseball (outfield) and football (linebacker/fullback) and, of course, hockey. A communications major at Minnesota-Duluth, he is the son of Andy and Verna Vaske and was born on 10/11/67 in Rockford, IL.



A Breakdown of the 1986-87 Bulldogs

By Year	By Position	By State/Province	By Major
Seniors - 8	Wings - 12	Minnesota - 24	Business Administration - 11
Juniors - 6	Defensemen - 8	Saskatchewan - 2	Communications - 6
Sophomores - 9	Centers - 7	Alberta - 1	Physical Education - 4
Freshmen - 7	Goaltenders - 3	Manitoba - 1	Elementary Education - 2
		Ontario - 1	Social Studies - 1
		British Columbia - 1	Undecided - 6

1986-87 Bulldogs Drafted by NHL Teams

NAME	YEAR	ROUND (NO.)	TEAM
Bob Alexander	1983	6 (113)	N.Y. Rangers
Barry Chyzowski	1986	8 (155)	N.Y. Rangers
Dave Cowan	1983	9 (182)	Washington
Brian Durand	1983	4 (76)	Minnesota
Bruce Fishback	1983	9 (173)	Los Angeles
Guy Gosselin	1982	8 (115)	Winnipeg
John Hyduke	1985	8 (156)	Los Angeles
Darin Ilikainen	1983	6 (121)	N.Y. Islanders
Pat Janostin	1985	4 (70)	N.Y. Islanders
Brian Johnson	1983	6 (104)	Hartford
Ross Johnson	1985	8 (153)	Minnesota
Tom Lorentz	1984	11 (223)	N.Y. Rangers
Brian Nelson	1984	8 (161)	N.Y. Rangers
Paul Roff	1983	12 (236)	Minnesota
Pat Scanlon	1986	9 (177)	N.Y. Rangers
Terry Shold	1985	10 (192)	New Jersey
Sandy Smith	1986	5 (88)	Pittsburgh
Jim Sprenger	1983	7 (142)	N.Y. Islanders
Sean Toomey	1983	7 (141)	Minnesota
Dennis Vaske	1986	2 (38)	N.Y. Islanders



1986-87 Minnesota-Duluth Hockey Roster

No	Player	Pos	Hgt	Wgt	Yr	Hometown (High School)
1	Mike Cortes	G	5-10	175	So	Duluth, MN (East)
2	Tom Hanson	D	5-11	175	So	Hibbing, MN
3	Rob Pallin	D	5-11	180	So	Chisholm, MN
4	Guy Gosselin	D	5-11	195	Sr	Rochester, MN (John Marshall)
5	Dale Jago	D	5-9	178	Fr	Reston, MANIT
6	Bob Alexander	RW	5-11	175	Jr	Apple Valley, MN (Rosemount)
7	Mike DeAngelis	D	5-10	185	Jr	Kamloops, B.C.
8	Brian Durand	C	6-2	195	Sr	Cloquet, MN
10	Joe DeLisle	RW	6-2	190	Jr	Shoreview, MN (Totino-Grace)
11	Brian Nelson	LW/C	6-0	175	Jr	Willmar, MN
12	Sean Toomey	RW	6-2	205	Sr	St. Paul, MN (Cretin)
13	Barry Chyzowski	C	6-0	170	Fr	Edmonton, ALTA
14	Ross Johnson	C/LW	5-11	175	Fr	Rochester, MN (Mayo)
15	Dan Tousignant	C	5-8	160	Fr	Bloomington, MN (Kennedy)
16	Bruce Fishback	RW	6-2	200	Sr	White Bear Lake, MN (Mariner)
17	Dave Cowan	C	5-10	185	Sr	Minneapolis, MN (Washburn)
18	Brian Johnson	C/D	5-10	180	Sr	Silver Bay, MN
19	Tom Lorentz	RW	5-11	175	So	West St. Paul, MN (Brady)
20	Skeeter Moore	LW	5-7	175	Sr	Duluth, MN (East)
21	Pat Scanlon	RW	6-1	180	Fr	St. Paul, MN (Cretin)
22	Wayne Smith	C	5-11	185	So	Gloucester, ONT
23	Pat Janostin	D	6-0	175	So	Hafford, SASK
24	Darin Illikainen	LW	6-4	205	Jr	Hermantown, MN
25	Jim Sprenger	D	5-11	190	Sr	Cloquet, MN
26	Terry Shold	LW	6-2	180	So	International Falls, MN
27	Sandy Smith	C/D	5-11	190	Fr	Brainerd, MN
28	Dennis Vaske	D	6-2	215	Fr	Plymouth, MN (Armstrong)
29	Paul Roff	RW/C	6-1	190	Jr	Edina, MN
30	Rick Hayko	G	5-11	175	So	Regina, SASK
31	John Hyduke	G	5-10	160	So	Hibbing, MN

HEAD COACH: Mike Sertich

ASSISTANT COACHES: Jim Knapp, Glenn Kulyk, Mike Randolph

TRAINER: Betty Fleissner

EQUIPMENT COORDINATOR: Rick Menz

ALPHABETICAL ROSTER

No.	Name	Pos.
6	Bob Alexander	W
13	Barry Chyzowski	C
1	Mike Cortes	G
17	Dave Cowan	C
7	Mike DeAngelis	D
10	Joe Delisle	W
8	Brian Durand	C
16	Bruce Fishback	W
4	Guy Gosselin	D
2	Tom Hanson	D
30	Rick Hayko	G
31	John Hyduke	G
24	Darin Illikainen	W
5	Dale Jago	D
23	Pat Janostin	D
18	Brian Johnson	C/D
14	Ross Johnson	D
19	Tom Lorentz	RW
20	Skeeter Moore	LW
11	Brian Nelson	LW/C
3	Rob Pallin	D
29	Paul Roff	RW/C
21	Pat Scanlon	RW
26	Terry Shold	W
27	Sandy Smith	C
22	Wayne Smith	C
25	Jim Sprenger	D
12	Sean Toomey	RW
15	Dan Tousignant	C
28	Dennis Vaske	D

Pronunciation Guide

Chyzowskichi-ZOW-ski	Janostinja-NAW-stin
Cortescour-TEZ	Lorentzlore-ENTZ
DeAngelisde-AN-gel-less	Pallinpa-LEEN
DeLislede-LYLE	TousignantTOO-zi-noe
Illikainenill-uh-KANE-un	VaskeVAS-key
JagoJAY-go	

MINNESOTA-DULUTH 1985-86 STATISTICS

(OVERALL RECORD: 26-13-3)

(WCHA RECORD: 21-12-1)

PLAYER POSITION	GP	G	A	PTS	PN-MIN	PP	SH	GW	GP	G	A	PTS	PN-MN	PP	SH	GW
Brett Hull-RW	42	52	32	84	19-46	20	0	5	34	36	28	64	17-42	17	0	4
Skeeter Moore-LW	42	28	41	69	18-52	15	3	5	34	22	28	50	10-28	12	2	4
Norm Maciver-D	42	11	51	62	18-36	6	0	0	34	7	40	47	17-34	4	0	0
Matt Christensen-C	33	16	41	57	14-36	6	0	4	29	13	31	44	14-36	3	0	3
Brian Johnson-C/D	42	11	37	48	9-18	7	0	2	34	10	30	40	7-14	7	0	2
Mark Odnokon-LW	40	16	29	45	40-88	5	0	3	32	11	22	33	35-78	3	0	3
Sean Toomey-RW	33	23	11	34	5-10	4	1	3	27	18	8	26	2-4	3	1	2
Dave Cowan-C	41	9	16	25	4-8	2	0	0	33	7	15	22	3-6	2	0	0
Jim Tominato-C/LW	40	6	16	22	17-37	0	0	1	32	2	8	10	12-27	0	0	1
Guy Gosselin-D	39	2	16	18	25-53	0	0	1	32	2	12	14	20-43	0	0	1
Jim Sprenger-D	42	6	11	17	12-24	1	0	0	34	6	7	13	10-20	1	0	0
Darin Illikainen-LW	31	6	6	12	3-6	0	0	1	26	6	5	11	2-4	0	0	1
Joe DeLisle-RW	39	4	6	10	16-32	0	0	0	33	4	6	10	14-28	0	0	0
Mike DeAngelis-D	34	1	4	5	5-10	0	0	0	27	0	2	2	3-6	0	0	0
Bruce Fishback-RW	37	2	3	5	2-4	0	0	0	30	1	1	2	2-4	0	0	0
Tom Lorentz-C	17	4	1	5	3-6	0	0	1	14	1	1	2	3-6	0	0	0
Sean Krakivsky-RW	10	0	4	4	1-2	0	0	0	7	0	2	2	1-2	0	0	0
Tom Hanson-D	28	1	2	3	3-6	0	0	0	24	1	0	1	2-4	0	0	0
Pat Janostin-D	26	1	2	3	2-4	0	0	0	19	1	1	2	2-4	0	0	0
Brian Nelson-LW/C	14	1	2	3	1-2	0	0	0	12	1	2	3	1-2	0	0	0
Bob Alexander-RW	6	1	1	2	2-4	1	0	0	5	1	1	2	2-4	1	0	0
Terry Shold-LW	18	1	1	2	1-2	0	0	0	13	0	1	1	1-2	0	0	0
Wayne Smith-C	11	2	0	2	2-4	0	0	0	10	2	0	2	2-4	0	0	0
Rob Pallin-D	19	0	1	1	4-8	0	0	0	17	0	1	1	4-8	0	0	0
John Hyduke-G	24	0	1	1	0-0	0	0	0	18	0	0	0	0-0	0	0	0
Brian Durand-C	11	1	0	1	2-4	0	0	0	10	1	0	1	2-4	0	0	0
Dan Tousignant-C	17	1	0	1	2-4	0	0	0	10	0	0	0	0-0	0	0	0
Rick Hayko-G	1	0	0	0	0-0	0	0	0	0	0	0	0	0-0	0	0	0
Mike Cortes-G	18	0	0	0	0-0	0	0	0	16	0	0	0	0-0	0	0	0
Bench					3-6								1-2			

UMD TOTALS	42	206	335	541	234-522	67	4	26	34	153	252	405	188-421	53	3	21
OPP TOTALS	42	157	268	425	282-581	33	3	12	34	118	200	318	241-501	27	3	12

GOALTENDER	W-L-T	GP	GA	MIN	AVG	SVS	SV%	W-L-T	GP	GA	MIN	AVG	SVS	SV%
John Hyduke	14-7-3	24	84	1401	3.60	572	.872	11-6-1	18	62	1096	3.39	443	.877
Mike Cortes	11-6-0	18	65	1074	3.63	502	.885	10-6-0	16	55	958	3.44	444	.890
Rick Hayko	1-0-0	1	7	60	7.00	26	.788	0-0-0	0	0	0	0.00	0	.000
UMD TOTALS	26-13-3	42	157	2535	3.72	1100	.875	21-12-1	34	118	2055	3.45	887	.883
OPP TOTALS	13-26-3	42	206	2536	4.87	1248	.858	12-21-1	34	153	2056	4.46	1017	.869

SCORING BY PERIODS:

UMD 51-71-83-1-206
OPP 41-62-52-2-157

POWER PLAY EFFICIENCY:

UMD 67 of 190 (.353)
OPP 33 of 140 (.236)

OPEN NET GOALS:

UMD 4
OPP 1

1985-86 MINNESOTA-DULUTH RESULTS

W	L	T	OPPONENT	UMD-OPP	SITE	ATT
W			U.S. International	12-4	Home	(5,186)
W			U.S. International	8-7	Home	(5,236)
W			North Dakota *	5-4	Away	(6,050)
W			North Dakota *	4-1	Away	(6,000)
	L		Minnesota *	2-4	Home	(5,664)+
W			Minnesota *	5-2	Home	(5,664)+
	L		Wisconsin *	3-5	Away	(8,664)+
	L		Wisconsin *	3-4	Away	(8,664)+
W			Alaska-Anchorage	8-6	Home	(5,664)+
W			Alaska-Anchorage	6-1	Home	(5,664)+
W			New Hampshire #	5-3	Home	(5,604)
W			New Hampshire #	4-3 (OT)	Home	(5,654)
W			Maine #	7-2	Away	(4,030)+
W			Maine #	6-3	Away	(4,090)+
W			Boston University #	8-6	Home	(5,664)+
		T	Boston University #	2-2 (OT)	Home	(5,413)
W			Boston College #	10-1	Home	(5,664)+
	L		Boston College #	3-4	Home	(5,664)+
W			Colorado College *	5-4	Home	(5,664)+
	L		Colorado College *	1-2	Home	(5,664)+
W			Lowell #	5-3	Away	(1,800)
W			Lowell #	5-3	Away	(1,934)
W			Michigan Tech *	7-2	Home	(5,664)+
W			Michigan Tech *	5-4	Home	(5,664)+
W			North Dakota *	4-3	Home	(5,664)+
	L		North Dakota *	7-8 (OT)	Home	(5,664)+
W			Providence College #	6-3	Away	(2,970)
W			Providence College #	6-0	Away	(3,030)+
W			Northeastern University #	4-1	Home	(5,664)+
W			Northeastern University #	5-2	Home	(5,664)+
	L		Denver *	2-4	Away	(5,200)+
W			Denver *	4-3	Away	(5,200)+
	L		Wisconsin *	3-7	Home	(5,664)+
W			Wisconsin *	5-3	Home	(5,664)+
	L		Minnesota *	3-4	Away	(7,775)+
	L		Minnesota *	3-6	Away	(7,790)+
	L		Northern Michigan *	5-6 (OT)	Away	(3,813)+
	L		Northern Michigan *	1-6	Away	(4,104)+
		T	Northern Michigan °	4-4	Home	(5,428)
W			Northern Michigan °	8-4	Home	(5,664)+
	L		Denver °	2-8	Away	(5,200)+
		T	Denver °	5-5	Away	(5,200)+

* WCHA Games; # WCHA-Hockey East Games; ° WCHA Playoffs
+ Sellout

1985-86 WON-LOSS SUMMARY

	W	L	T	PCT
Home Overall	17	5	2	.750
Away Overall	9	8	1	.528
vs. WCHA	10	12	2	.458
vs. Hockey East	12	1	1	.893
vs. Non-Conference	4	0	0	1.000
Overtime Games	1	2	1	.375
One-Goal Games	7	6	0	.538
WCHA Playoffs	1	1	2	.500

1985-86 WCHA STATISTICS

1985-86 WCHA Standings

Team (Overall)	W	L	T	TP	GF	GA
Denver (34-13-1)	25	9	0	50	170	115
Minnesota (35-13-0)	24	10	0	48	179	116
Wisconsin (27-15-0)	23	11	0	46	172	136
Minnesota Duluth (26-13-3)	21	12	1	43	153	118
Northern Michigan (23-14-2)	21	13	0	42	168	151
North Dakota (23-16-1)	19	14	1	39	156	137
Colorado College (12-26-2)	11	21	2	24	131	155
Michigan Tech (10-26-4)	9	22	3	21	118	164

1985-86 GOALTENDING LEADERS

	GP	W-L-T	SVS%	GAA
1. John Blue, Minnesota	21	14-5-0	.886	3.08
2. Chris Olson, Denver	17	11-5-0	.901	3.25
3. John Hydeuk, UM-Duluth	18	11-6-1	.877	3.39
4. Mike Cortes, UM-Duluth	16	10-6-0	.890	3.44
5. Tom Allen, Denver	19	14-4-0	.886	3.45
6. Frank Pietrangelo, Minnesota	15	10-5-0	.878	3.65
7. Mike Richter, Wisconsin	18	11-6-0	.883	3.75
8. Scott Brower, North Dakota	17	11-5-0	.883	3.82
9. Greg Strome, North Dakota	19	8-8-1	.868	3.94
10. Dennis Jiannaras, N. Michigan	24	17-7-0	.885	3.95

1985-86 ALL-WCHA TEAM

FIRST TEAM

PLAYER	YR	POS	SCHOOL
John Blue	So.	G	Minnesota
Norm Maciver	Sr.	D	UM-Duluth
Scott Sandelin	Sr.	D	North Dakota
Dallas Gaume	Sr.	F	Denver
Gary Emmons	Jr.	F	N. Michigan
Brett Hull	So.	F	UM-Duluth

SECOND TEAM

PLAYER	YR	POS	SCHOOL
Tom Allen	Sr.	G	Denver
Rob Doyle	Jr.	D	Colorado College
Marty Wiitala	Sr.	D	Wisconsin
Dwight Mathiasen	Jr.	F	Denver
Pat Micheletti	Sr.	F	Minnesota
Corey Millen	Jr.	F	Minnesota

MOST VALUABLE PLAYER — Dallas Gaume, Denver

COACH OF THE YEAR — Ralph Backstrom, Denver

FRESHMAN OF THE YEAR — Mike Richter, Wisconsin

HONORABLE MENTION

COLORADO COLLEGE: Rick Boh, Jr. C; Marty Wakelyn, Sr. G; Derek Pizzey; Fr. G.
DENVER: Chris Olson, Jr. G; Grant Dion, Sr. D; Jim Smith, Sr. D; Eric Johnson, Jr. D; Jeff Lamb, Jr. C; John McMillan, Jr. C.
MICHIGAN TECH: Dave Reiersen, Sr. D; Dave Roach, Jr. G.
MINNESOTA: Tony Kellin, Sr. D; Frank Pietrangelo, Sr. G; Wally Chapman, Sr. W; Todd Okerlund, Jr. W; Gary Shopek, Jr. D.
UM-DULUTH: **Matt Christensen, Sr. C; Guy Gosselin, Jr. D; John Hydeuk, Fr. G.**
NORTH DAKOTA: Chris Jensen, Sr. W; Bob Joyce, Soph. W; Glen Klotz, Sr. D; Brian Williams, Sr. C.
NORTHERN MICHIGAN: Dave Randall, Sr. D; Dennis Jiannaras, Jr. G; Dave Moree, Jr. D.
WISCONSIN: Tim Thomas, Sr. D/F; Tony Granato, Jr. W; Dave Maley, Sr. W; Mike Richter, Fr. G; Scott Mellanby, Soph. W.

1985-86 SCORING LEADERS

PLAYER	GP	G	A	TP
1. Dallas Gaume, C, Denver	34	24	49	73
2. Gary Emmons, C, N. Michigan	33	42	26	68
3. Brett Hull, W, UM-Duluth	34	36	28	64
3. Dwight Mathiasen, W, Denver	34	25	39	64
5. Pat Micheletti, W, Minnesota	34	27	32	59
6. Corey Millen, C, Minnesota	34	28	30	58
7. Chris Jensen, W, North Dakota	28	17	37	54
8. Dave Maley, F, Wisconsin	34	16	36	52
9. Rob Doyle, Jr., D, Colorado College	34	15	36	51
10. Bob Joyce, W, North Dakota	34	27	23	50
10. Skeeter Moore, W, UM-Duluth	34	22	28	50
10. Brian Williams, C, North Dakota	34	20	30	50
13. John McMillan, Jr., C, Denver	27	14	35	49
13. Rick Boh, Jr., C, Colorado College	34	27	22	49
15. Norm Maciver, D, UM-Duluth	34	7	40	47
16. Joe West, W, Northern Michigan	31	15	30	45
17. Tony Granato, W, Wisconsin	27	25	19	44
17. Matt Christensen, C, UM-Duluth	29	13	31	44
19. Marty Wiitala, D, Wisconsin	34	10	33	43
20. Wally Chapman, W, Minnesota	33	21	21	42
20. Steve MacSwain, W, Minnesota	34	16	26	42
20. Ralph Vos, W, Northern Michigan	34	10	32	42

PAST WCHA CHAMPIONS

Year	Champion	Runnerup
1985-86	Denver	Minnesota
1984-85	UM-Duluth	Minnesota
1983-84	UM-Duluth	North Dakota
1982-83	Minnesota	North Dakota
1981-82	North Dakota	Wisconsin
1980-81	Minnesota	Wisconsin
		Michigan Tech
1979-80	North Dakota	Minnesota
1978-79	North Dakota	Minnesota
1977-78	Denver	Wisconsin
1976-77	Wisconsin	Notre Dame
1975-76	Michigan Tech	Michigan State
1974-75	Minnesota	Michigan Tech
1973-74	Michigan Tech	Minnesota
1972-73	Denver	Notre Dame
1971-72	Denver	Wisconsin
1970-71	Michigan Tech	Denver
1969-70	Minnesota	Denver
		Michigan Tech
1968-69	Michigan Tech	Denver
1967-68	Denver	Michigan Tech
1966-67	North Dakota	Denver
1965-66	Michigan Tech	North Dakota
		Minnesota
1964-65	Michigan Tech	North Dakota
1963-64	Denver	Michigan
1962-63	Denver	North Dakota
1961-62	Michigan Tech	Michigan
1960-61	Denver	Minnesota
1959-60	Denver	Michigan Tech
1958-59	No League Play	
1957-58	North Dakota	Denver
1956-57	Colorado College	Michigan
1955-56	Michigan	Michigan Tech
1954-55	Colorado College	Michigan
1953-54	Minnesota	Michigan
1952-53	Minnesota	Michigan
1951-52	Colorado College	Michigan, Denver

A HISTORY OF BULLDOG HOCKEY: 42 YEARS OLD AND GROWING

It all began over a half century ago on a frozen sheet of outdoor ice near the east side of Duluth. The equipment was, to say the least, crude and the talent certainly wasn't much better.

But those hardy souls of yesteryear, as well as those that were to follow later, are the ones who helped shape and mold the University of Minnesota-Duluth hockey program into really what it is today — one of the finest in the nation.

In the winter of 1930, an industrial education instructor by the name of Frank Kovach rounded up a handful of aspiring athletes and formed the first hockey program at what was then known as Duluth State Teachers College. Kovach, who also instigated the first football and basketball teams during that same year, did the most with what he had (DSTC had begun accepting male students just two years earlier) in the inaugural campaign, but nevertheless finished the year with a 0-3-0 record losing twice to Eveleth Junior College and once to Duluth Central High School. Kovach awarded 15 letters that year and the following season his charges turned in a 2-5 mark. But, just as player interest had begun to swing upward, the mighty hand of the Great Depression hit DSTC hockey with a stinging blow. In fact, it wasn't until 1946-47 before hockey would return to the DSTC campus.

Under player coach Joe Oven and faculty adviser Ward Wells, DSTC turned in a commendable 11-6-1 overall record in 1946-47. The following season, DSTC officially became a branch of the University of Minnesota system with the hockey coaching duties going to Hank Jensen. Jensen headed the Bulldogs for four years, compiling a 17-9-1 record during that span, including a perfect 7-0 mark in 1948-49, UMD's only unbeaten season.

UMD joined the Minnesota Intercollegiate Athletic Conference (MIAC) just prior to the 1949-50 season and began a kind of domination that is rare in sports.

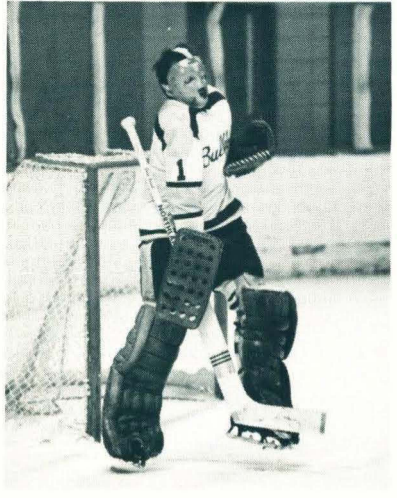
Under coach Gord Eddolls, a former Bulldog hockey standout who succeeded Jensen in 1951, UMD copped its first MIAC title in 1951-53, sharing the honor with St. Thomas. The following season, the Bulldogs won their first outright MIAC championship behind a group of Duluth Denfeld High School alumni — Alex Sisto, Frank Johnson, Al Peterson and Bob Boyat. Another Denfeld graduate, Duane Dubug Johnson, had a superb year in the nets and his backup goalie that year was former UMD athletic director Ralph Romano.

The 1954-55 Bulldogs (coached by Bob Boyat) slipped to second place behind St. Thomas in the MIAC race, but Don Bourdeau, who ended a long coaching stint two years ago at nearby Duluth East High School, finished as the conference's scoring champion. Connie Pleban, who had coached the 1952 U.S. Olympic Team to a silver medal in the Winter Games at Helsinki, Finland, took over the coaching duties in 1955-56 and Harvey Flaman paced the club in scoring that year with 54 points, a school record at the time.

UMD's conference unbeaten string was stretched to 25 games through the 1956-57 season as the Bulldogs assembled one of the best hockey outfits in school history. Canadian imports Flaman, Elmer Schwartz and Jerry Kleisinger each played a big role for UMD during that year. Flaman and Schwartz each set six individual scoring records while Kleisinger had an amazing 1.10 goals against average in the conference as the Bulldogs skated to a 16-4-3 record overall.

The 1957-58 season has been chronicled as "the turning point" in UMD hockey lore as the Bulldogs began to play a national-caliber schedule. Their unbeaten string in MIAC play not only reached 35, but the scores were becoming so one-sided that officials began to consider dropping out of the MIAC to pursue a higher calling.

Pleban, at the time the winningest coach in UMD hockey history, left the UMD program to accept a position with the 1960 Olympic team and Ralph Romano kept the Bulldogs' MIAC streak alive the next two years, reaching 56 before UMD elected to abandon the MIAC in hopes of establishing itself as a legitimate



Throughout its rich history, Minnesota-Duluth has continually been blessed with an abundance of good goaltending such as Glenn "Chico" Resch shown here making a stop during the 1968-69 season.

national power.

For the next four years, UMD played an independent schedule, largely against teams from the prestigious WCHA, and their record steadily improved against the best college hockey teams in the land. Finally, in 1965-66, the Bulldogs were awarded the first "expansion franchise" in the WCHA.

UMD's infancy in the WCHA was highlighted by the fascination of Bulldog fans with pint-size center Keith "Huffer" Christiansen, who set five scoring records in 1966-67, led the league in scoring, and followed by one year the selection of teammate Bob Hill as an All-American. Bruce McLeod, who today is the athletic director at UMD, and Pat Francisco finished second and third in the WCHA scoring race as UMD enjoyed its best season to that point against national competition. That also was the year that the Bulldogs left the cozy Duluth Curling Club to move into Duluth's renowned new Duluth Arena complex.

Romano resigned as head coach in 1968 to move into administration, and the torch was passed on to Bill Selman, who coached at UMD for two seasons as the Bulldogs continued to press hard to move up in the WCHA Standings. Ron Busniuk and Murray Keogan become UMD's third and fourth All-Americans in 1970, and Walt Ledingham won the same honor the next two seasons.

Selman's assistant, former player Terry Shercliffe, then began a five-year stint in 1970 as head coach that included UMD's first season in the WCHA over .500 in 1972-73. Pat Boutette joined the All-American Club, and Tom Milani, who still holds the school record for most goals in a career with 100, was the new man in town.

In 1975-76, UMD officials persuaded Gus Hendrickson and Mike Sertich, who had built a hockey dynasty at Grand Rapids High School, to take over the program. Hendrickson's first couple of years concentrated on rebuilding the program with the likes of Dave Langevin, Rick Heinz, and Curt Giles, but in 1978-79 the Bulldogs posted a 22-14-4 record, and at one point were ranked the No. 1 team in the country! Mark Pavelich and Bah Harrington of Olympic fame were two of the leading characters in the script that year.

But the 'Dogs tumbled back into the lower half of the standings in 1979-80, and it wasn't until 1982-83 that UMD was able to crack the WCHA's upper division. Under then first-year coach Mike Sertich, a former Bulldog himself, UMD placed fourth in the final league standings and gained its first ever invitation to the NCAA championships. The following year, Sertich proved 1982-83 was no fluke as the Bulldogs posted a then school-best 29-11-2 overall record, clinched their first WCHA title and placed second in the NCAA finals in Lake Placid, NY. A year later Sertich's magic continued. Minnesota-Duluth took home its second straight WCHA regular season and playoff crowns and earned another trip to the NCAA Championships in Detroit, where the Bulldogs finished third. Overall, the Bulldogs charted a school-record 36-9-3 mark and three players — right wing Bill Watson, defenseman Norm Maciver, and goaltender Rick Kostl — were named to the Titan All-American Team. Maciver gained All-American status again in 1985-86.



After somewhat of a long dry spell, Mike Sertich and the Bulldogs had plenty of reason to whoop it up on Feb. 17, 1984 after Minnesota-Duluth upended Wisconsin 4-2 to capture its first Western Collegiate Hockey Association championship since joining the prestigious circuit in 1965-66. The Bulldogs went on to win the WCHA playoffs as well that year and finish second at the NCAA finals. (Photo courtesy of the Duluth News-Tribune.)

BULLDOG vs. ALL-TIME OPPONENTS

TEAM	W	L	T	SERIES BEGAN	LAST MEETING
Air Force	2	0	0	1972-73	1981-82
Alaska-Anchorage	2	0	0	1985-86	1985-86
Alaska-Fairbanks	2	0	0	1984-85	1984-85
Augsburg College	9	0	0	1949-50	1960-61
Bemidji State	2	0	0	1948-49	1973-74
Boston College	3	5	0	1967-68	1985-86
Boston University	5	5	2	1968-69	1985-86
Bowdoin College	1	0	0	1975-76	1975-76
Bowling Green	1	1	0	1980-81	1983-84
Brown University	4	1	0	1965-66	1979-80
Calgary	1	0	0	1970-71	1970-71
Carleton College (MN)	2	0	0	1947-48	1948-49
Carleton University	1	0	0	1972-73	1972-73
Clarkson College	1	2	0	1980-81	1983-84
Colgate University	2	0	0	1964-65	1968-69
Colorado College	41	41	1	1962-63	1985-86
Concordia College	3	0	0	1958-59	1960-61
Czechoslovakia Olympic	0	1	0	1971-72	1971-72
Dartmouth College	2	1	0	1953-54	1058-59
Denver University	38	59	4	1961-62	1985-86
Ferris State	2	0	1	1980-81	1983-84
Gustavus Adolphus College	14	0	0	1952-53	1960-61
Hamline University	16	0	0	1948-49	1960-61
Harvard University	5	1	0	1957-58	1984-85
Illinois-Chicago	2	0	0	1981-82	1981-82
Japan Olympic Team	2	0	0	1959-60	1979-80
Lakehead University	6	0	0	1964-65	1970-71
Lake Superior State	6	2	2	1972-73	1983-84
Laurentian University	1	1	0	1968-69	1968-69
University of Lowell	4	0	0	1984-85	1985-86
Macalester College	16	4	1	1947-58	1960-61
University of Maine	4	0	0	1984-85	1985-86
Manitoba	8	1	1	1961-62	1971-72
McGill University	1	0	0	1964-65	1964-65
Michigan	16	23	1	1963-64	1980-81
Michigan State	19	31	0	1961-62	1980-81
Michigan Tech	29	80	3	1953-54	1985-86
Michigan Tech JV	7	1	1	1955-56	1960-61
Minnesota	36	67	7	1961-62	1985-86
New Hampshire	9	0	0	1969-70	1985-86
North Dakota	45	67	3	1954-55	1985-86
North Dakota JV	1	1	0	1956-57	1956-57
Notre Dame	8	16	2	1971-72	1980-81
Northeastern University	3	2	0	1981-82	1985-86
Northern Arizona	3	0	0	1982-83	1984-85
Northern Michigan	8	4	1	1981-82	1985-86
Norway Olympic Team	0	1	0	1961-62	1961-62
Ohio University	2	0	0	1969-70	1969-70
Ohio State	0	1	1	1974-75	1979-80
Princeton University	1	1	0	1980-81	1980-81
Providence College	9	4	0	1972-73	1985-86
Rensselaer Polytechnic Inst.	2	1	0	1972-73	1984-85
St. Cloud State	4	3	1	1947-48	1952-53
St. John's University	13	5	0	1949-50	1959-60
St. Lawrence University	1	0	0	1979-80	1970-80
St. Louis University	1	0	0	1973-74	1973-74
St. Mary's College	1	0	0	1959-60	1959-60
St. Olaf's College	2	0	0	1949-50	1960-61
St. Scholastica	1	0	0	1973-74	1973-74
St. Thomas	13	8	0	1949-50	1960-61
Toronto	2	0	0	1961-62	1961-62
U.S. International	4	0	1	1981-82	1985-86
U.S. Olympic (Nationals)	3	12	0	1955-56	1983-84
Vermont	3	0	0	1973-74	1982-83
West Point	2	0	0	1966-67	1966-67
Winnipeg	0	0	1	1956-57	1956-57
Wisconsin	31	36	3	1967-68	1985-86

(Boldface indicates 1986-87 opponents)

THE OPPONENTS

BOSTON COLLEGE



January 16 at Chestnut Hill, MA, 6:30 p.m. (CST)

LOCATION: Chestnut Hill, MA

ENROLLMENT: 8,500

NICKNAME: Eagles

COLORS: Maroon & Gold

ARENA: McHugh Forum (4,000)

HEAD COACH: Len Ceglarski (Boston College '51)

COACHING RECORD AT SCHOOL: 271-162-16/14 years

COACHES PHONE: (617) 552-3028

ASSISTANT COACHES: Steve Cedorchuk, Bernie Burke,
Jim McDonald

CONFERENCE: Hockey East

1985-86 OVERALL RECORD: 26-13-3

1985-86 CONFERENCE RECORD/PLACE: 23-9-2/1st

LETTERMEN RETURNING/LOST: 14/10

SPORTS INFORMATION DIRECTOR: Joe Gomes

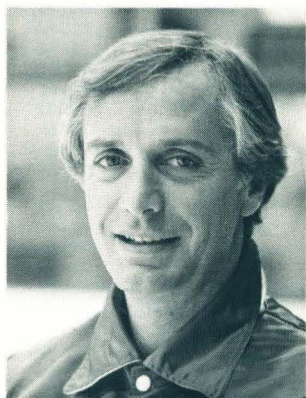
SID PHONE: (617) 552-3004

ARENA PHONE: (617) 552-4747

SERIES RECORD vs. UMD: 5-3-0



BOSTON UNIVERSITY



January 17 at Boston, MA, 6:30 p.m. (CST)

LOCATION: Boston, MA

ENROLLMENT: 12,967

NICKNAME: Terriers

COLORS: Scarlet & White

ARENA: Brown Arena (3,684)

HEAD COACH: Jack Parker (Boston University '68)

COACHING RECORD AT SCHOOL: 277-129-17/13 years

COACHES PHONE: (617) 353-4639

ASSISTANT COACHES: Ben Smith, Bob Richardson,
Ed Walsh

CONFERENCE: Hockey East

1985-86 OVERALL RECORD: 5-14-4

1985-86 CONFERENCE RECORD: 20-11-3/2nd

LETTERMEN RETURNING/LOST: 21/5

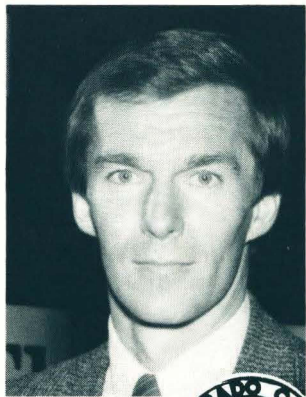
SPORTS INFORMATION DIRECTOR: Ed Carpenter

SID PHONE: (617) 353-2872

SERIES RECORD vs. UMD: 5-5-2



COLORADO COLLEGE



October 31-November 1 at Colorado Springs, CO, 8:35 p.m. (CST)

January 30-31 at Duluth, MN, 8:05 and 7:35 p.m. (CST)

LOCATION: Colorado Springs, CO

ENROLLMENT: 1,850

NICKNAME: Tigers

COLORS: Black & Gold

ARENA: Broadmoor World Arena (4,300)

HEAD COACH: Mike Bertsch (Colorado College '73)

COACHING RECORD AT SCHOOL: 44-100-4/4 years

COACHES PHONE: (303) 473-2233, Ext. 480

ASSISTANT COACHES: Ron Byrne, Bill Baldrice,
Doug Palazzari

CONFERENCE: WCHA

1985-86 OVERALL RECORD: 12-26-2

1985-86 CONFERENCE RECORD/PLACE: 11-21-2/7th

LETTERMEN RETURNING/LOST: 15/5

SPORTS INFORMATION DIRECTOR: Dave Moross

SID PHONE: (303) 473-2233, Ext. 755

ARENA PHONE: (303) 634-7711

SERIES RECORD vs. UMD: 41-41-1



UNIVERSITY OF DENVER

November 7-8 at Denver, CO, 8:35 p.m. (CST)
January 23-24 at Duluth, MN, 8:05 and 7:35 p.m. (CST)

LOCATION: Denver, CO
ENROLLMENT: 7,200
NICKNAME: Pioneers
COLORS: Crimson & Gold
ARENA: DU Arena (5,196)
HEAD COACH: Ralph Backstrom
COACHING RECORD AT SCHOOL: 103-96-7/5 years
COACHES PHONE: (303) 871-3397
ASSISTANT COACHES: Ron Grahame, John Harrington
CONFERENCE: WCHA
1985-86 OVERALL RECORD: 34-13-1
1985-86 CONFERENCE RECORD/PLACE: 25-9-0/1st
LETTERMEN RETURNING/LOST: 14/9
SPORTS INFORMATION DIRECTOR: Bill Scharton
SID PHONE: (303) 871-3392
ARENA PHONE: (303) 871-3921
SERIES RECORD vs. UMD: 59-38-4



HARVARD UNIVERSITY

December 12-13 at Duluth, MN, 8:05 and 7:35 p.m. (CST)

LOCATION: Cambridge, MA
ENROLLMENT: 6,568
NICKNAME: Crimson
COLORS: Crimson, Black & White
ARENA: Bright Hockey Center (2,850)
HEAD COACH: Bill Cleary (Harvard '56)
COACHING RECORD AT SCHOOL: 231-167-21/15 years
COACHES PHONE: (617) 459-2418
ASSISTANT COACHES: Ronn Tomassoni, Kevin Hampe
CONFERENCE: ECAC
1985-86 OVERALL RECORD: 25-8-1
1985-86 CONFERENCE RECORD/PLACE: 18-3-0/1st
LETTERMEN RETURNING/LOST: 23/7
SPORTS INFORMATION DIRECTOR: Frank Cicero
SID PHONE: (617) 495-2206 or 4847
ARENA PHONE: (617) 495-3775
SERIES RECORD vs. UMD: 1-5-0



UNIVERSITY OF LOWELL

January 2 at Duluth, MN, 8:05 p.m. (CST)

LOCATION: Lowell, MA
ENROLLMENT: 8,200
NICKNAME: Chiefs
COLORS: Red, White & Blue
ARENA: Joe Tully Forum (3,200)
HEAD COACH: Bill Riley, Jr. (Boston University '68)
COACHING RECORD AT SCHOOL: 290-174-13/17 years
COACHES PHONE: (617) 452-5000, Ext. 2373
ASSISTANT COACHES: Don Cahoon, Gary Bishop,
Mike Geragosian
CONFERENCE: Hockey East
1985-86 OVERALL RECORD: 11-29-2
1985-86 CONFERENCE RECORD/PLACE: 7-25-2/6th
LETTERMEN RETURNING/LOST: 19/5
SPORTS INFORMATION DIRECTOR: B. L. Elfring
SID PHONE: (617) 452-5000, Ext. 2770
ARENA PHONE: (617) 663-3098
SERIES RECORD vs. UMD: 0-4-0





NEW HAMPSHIRE

December 6 at Durham, NH, 6:30 p.m. (CST)

LOCATION: Durham, NH

ENROLLMENT: 10,500

NICKNAME: Wildcats

COLORS: Blue & White

ARENA: Snively Arena (4,000)

HEAD COACH: Bob Kullen (Bowdoin '71)

COACHING RECORD AT SCHOOL: 1st year

COACHES PHONE: (603) 862-3882

STANT COACHES: Dave O'Connor, Bill Beaney

CONFERENCE: Hockey East

1985-86 OVERALL RECORD: 5-29-3

1985-86 CONFERENCE RECORD/PLACE: 5-27-2/7th

LETTERMEN RETURNING/LOST: 21/1

SPORTS INFORMATION DIRECTOR: Mike Bruckner

SID PHONE: (603) 862-3906

ARENA PHONE: (603) 862-1199

SERIES RECORD vs. UMD: 0-9-0



NORTH DAKOTA

October 10-11 at Duluth, MN, 8:05 and 7:35 p.m. (CST)

February 6-7 at Grand Forks, ND, 7:35 p.m. (CST)

LOCATION: Grand Forks, ND

ENROLLMENT: 11,300

NICKNAME: Fighting Sioux

COLORS: Green & White

ARENA: Winter Sports Center (6,066)

HEAD COACH: John "Gino" Gasparini (North Dakota '68)

COACHING RECORD AT SCHOOL: 217-103-11/8 years

COACHES PHONE: (701) 777-2234

ASSISTANT COACHES: Dean Blais, John Marks, Cary Eades

CONFERENCE: WCHA

1985-86 OVERALL RECORD: 24-16-1

1985-86 CONFERENCE RECORD/PLACE: 19-14-1/4th

LETTERMEN RETURNING/LOST: 19/6

SPORTS INFORMATION DIRECTOR: Lee Bohnet

SID PHONE: (701) 777-2985

ARENA PHONE: (701) 777-3032

SERIES RECORD vs. UMD: 67-45-3



NORTHEASTERN UNIVERSITY

December 28 at Duluth, MN, 7:35 p.m. (CST)

LOCATION: Boston, MA

ENROLLMENT: 16,500

NICKNAME: Huskies

COLORS: Red, & Black

ARENA: Matthews Arena (6,000)

HEAD COACH: Fern Flaman

COACHING RECORD AT SCHOOL: 204-251-15/16 years

COACHES PHONE: (617) 437-3377

STANT COACHES: Don McKenney, Bill Berglund

CONFERENCE: Hockey East

1985-86 OVERALL RECORD: 20-17-2

1985-86 CONFERENCE RECORD/PLACE: 18-14-2/3rd

LETTERMEN RETURNING/LOST: 16/6

SPORTS INFORMATION DIRECTOR: Bill Daherty

SID PHONE: (617) 437-2691

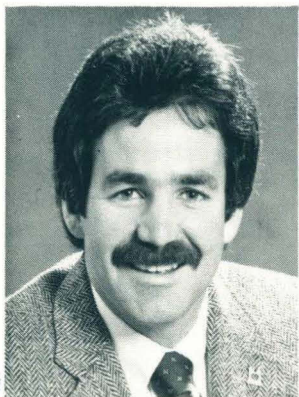
ARENA PHONE: (617) 437-3376

SERIES RECORD vs. UMD: 2-3-0

UNIVERSITY OF MAINE

January 3 at Duluth, MN, 7:35 p.m. (CST)

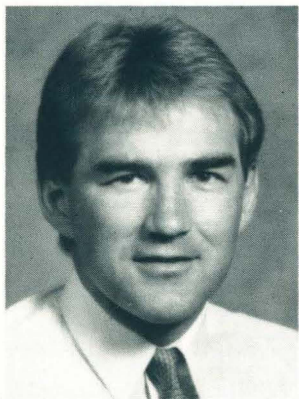
LOCATION: Orono, ME
ENROLLMENT: 11,000
NICKNAME: Black Bears
COLORS: Blue & White
ARENA: Alford Arena (4,000)
HEAD COACH: Shawn Walsh (Bowling Green '78)
COACHING RECORD AT SCHOOL: 23-57-2/2 years
COACHES PHONE: (207) 581-1166
ASSISTANT COACHES: Jay Leach, Mike Piette
CONFERENCE: Hockey East
1985-86 OVERALL RECORD: 21-28-1
1985-86 CONFERENCE RECORD/PLACE: 8-25-1/5th
LETTERMEN RETURNING/LOST: 19/6
SPORTS INFORMATION DIRECTOR: Leonard Harlow
SID PHONE: (207) 581-2603
ARENA PHONE: (207) 581-1106
SERIES RECORD vs. UMD: 0-4-0



MICHIGAN TECH

October 24-25, at Duluth, MN, 8:05 and 7:35 p.m. (CST)

LOCATION: Houghton, MI
ENROLLMENT: 6,500
NICKNAME: Huskies
COLORS: Silver and Gold
ARENA: Student Ice Arena (4,200)
HEAD COACH: Herb Boxer
COACHING RECORD AT SCHOOL: 10-26-4/1 year
COACHES PHONE: (906) 487-2715
ASSISTANT COACHES: Mel Pearson, Bruce Horsch
CONFERENCE: WCHA
1985-86 OVERALL RECORD: 10-26-4
1985-86 CONFERENCE RECORD/PLACE: 9-22-3/8th
LETTERMEN RETURNING/LOST: 14/5
SPORTS INFORMATION DIRECTOR: Jeff Mordhorst
SID PHONE: (906) 487-2350
ARENA PHONE: (906) 487-2337
SERIES RECORD vs. UMD: 80-29-3



UNIVERSITY OF MINNESOTA

October 17-18 at Minneapolis, MN, 7:35 p.m. (CST)
February 13-14 at Duluth, MN, 8:05 & 7:35 p.m. (CST)

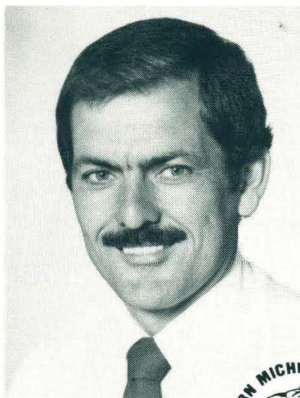
LOCATION: Minneapolis, MN
ENROLLMENT: 45,000
NICKNAME: Golden Gophers
COLORS: Maroon & Gold
ARENA: Mariucci Arena (7,625)
HEAD COACH: Doug Woog (Minnesota '66)
COACHING RECORD AT SCHOOL: 35-13-0/1 year
COACHES PHONE: (612) 625-8090
ASSISTANT COACHES: Dean Talafous, Bill Butters
CONFERENCE: WCHA
1985-86 OVERALL RECORD: 35-13-0
1985-86 CONFERENCE RECORD/PLACE: 24-10-0/2nd
LETTERMEN RETURNING/LOST: 19/4
SPORTS INFORMATION DIRECTOR: Tom Greenhoe
SID PHONE: (612) 625-4090
ARENA PHONE: (612) 625-5804
SERIES RECORD vs. UMD: 67-36-7



NORTHERN MICHIGAN UNIV.

November 21-22 at Duluth, MN, 8:05 and 7:35 p.m. (CST)
December 19-20 at Marquette, MI, 7:05 and 6:35 p.m. (CST)

LOCATION: Marquette, MI
ENROLLMENT: 7,600
NICKNAME: Wildcats
COLORS: Old Gold & Olive Green
ARENA: Lakeview Arena (4,200)
HEAD COACH: Rick Comley (Lake Superior State '72)
COACHING RECORD AT SCHOOL: 210-153-18/10 years
COACHES PHONE: (906) 227-1192
ASSISTANT COACHES: Walt Kyle, Mike Gibbons
CONFERENCE: WCHA
1985-86 OVERALL RECORD: 23-14-2
1985-86 CONFERENCE RECORD/PLACE: 21-13-0/5th
LETTERMEN RETURNING/LOST: 17/6
SPORTS INFORMATION DIRECTOR: Tony Tollefson
SID PHONE: (906) 227-1013
ARENA PHONE: (906) 228-8512
SERIES RECORD vs. UMD: 4-8-1



PROVIDENCE COLLEGE

December 27 at Duluth, MN, 8:05 p.m. (CST)

LOCATION: Providence, RI
ENROLLMENT: 3,600
NICKNAME: Friars
COLORS: Black & White
ARENA: Schneider Arena (3,000)
HEAD COACH: Mike McShane (New Hampshire '71)
COACHING RECORD AT SCHOOL: 14-24-1/1 year
COACHES PHONE: (401) 865-2551
ASSISTANT COACHES: Richard Umile, Scott Borek
CONFERENCE: Hockey East
1985-86 OVERALL RECORD: 14-24-1
1985-86 CONFERENCE RECORD/PLACE: 11-21-1/4th
LETTERMEN RETURNING/LOST: 15/9
SPORTS INFORMATION DIRECTOR: Kathy Walsh
SID PHONE: (401) 865-2272
ARENA PHONE: (401) 865-2272
SERIES RECORD vs. UMD: 4-9-0



UNIVERSITY OF WISCONSIN

January 9-10 at Madison, WI, 7:35 p.m. (CST)
November 14-15 at Duluth, MN, 8:05 & 7:35 p.m. (CST)

LOCATION: Madison, WI
ENROLLMENT: 45,050
NICKNAME: Badgers
COLORS: Cardinal & White
ARENA: Dane County Coliseum (8,644)
HEAD COACH: Jeff Sauer (Colorado College '65)
COACHING RECORD AT SCHOOL: 106-59-5/4 years
COACHES PHONE: (608) 262-3932
ASSISTANT COACHES: Grant Standbrook, Mike Kemp, Bill Howard, Ian Perrin
CONFERENCE: WCHA
1985-86 OVERALL RECORD: 27-15-0
1985-86 CONFERENCE RECORD/PLACE: 23-11-0/3rd
LETTERMEN RETURNING/LOST: 14/11
SPORTS INFORMATION DIRECTOR: Doug Spencer
SID PHONE: (608) 262-1811
ARENA PHONE: (608) 251-6538
SERIES RECORD vs. UMD: 36-31-3



WHO WAS WATCHING THE 'DOGS

1985-86 BULLDOG ATTENDANCE

	ALL GAMES	HOME	AWAY
Total Attendance	225,987	134,472	91,514
(Average)	(5,381)	(5,603) ^o	(5,084)
WCHA/Hockey East	182,718	101,604	81,114
(Average)	(5,374)	(5,645)	(5,070)
WCHA Playoffs	21,492	11,092	10,400
(Average)	(5,373)	(5,546)	(5,200)
Sellouts	31*	18	13

^o 99.0 Percent of Capacity

* Indicates School Record

Year-By-Year Bulldog Attendance at the Duluth Arena

Year	Games	Attendance	Average
1966-67	16	61,798	3,862
1967-68	14	40,919	2,923
1968-69	16	48,292	3,018
1969-70	17	83,492	4,912
1970-71	19	95,284	5,015
1971-72	19	89,398	4,705
1972-73	17	75,562	4,445
1973-74	20	87,095	4,355
1974-75	18	76,919	4,273
1975-76	20	87,560	4,378
1976-77	18	85,742	4,763
1977-78	18	88,816	4,934
1978-79	22	113,979	5,181
1979-80	19	95,693	5,036
1980-81	20	101,182	5,059
1981-82	18	88,736	4,930
1982-83	23	117,129	5,093
1983-84	25	132,908	5,316
1984-85	28	157,257	5,616
1985-86	24	134,472	5,603
TOTALS	391	1,862,233	4,763

BULLDOG ALL-AMERICANS

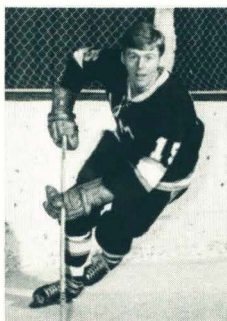
BULLDOG U.S. OLYMPIANS

All Americans

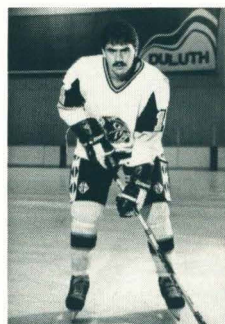
1985-86	Norm Maciver, Defense
1984-85	Rick Kosti, Goaltender
1984-85	Norm Maciver, Defense
1984-85	Bill Watson, Right Wing
1983-84	Tom Kurvers, Defense
1983-84	Bill Watson, Right Wing
1978-79	Curt Giles, Defense
1978-79	Mark Pavelich, Center
1977-78	Curt Giles, Defense
1972-73	Pat Boutette, Left Wing
1971-72	Walt Ledingham, Left Wing
1970-71	Walt Ledingham, Left Wing
1969-70	Ron Busniuk, Center & Defense
1969-70	Murray Keogan, Center
1966-67	Huffer Christiansen, Center
1965-66	Bob Hill, Defense



Bob Hill



Walt Ledingham



Bill Watson

U.S. Olympians

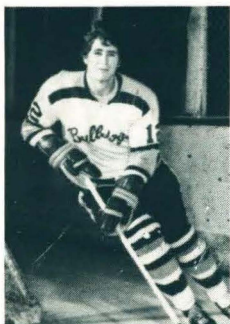
1984	John Harrington
1984	Bob Mason
1980	John Harrington
1980	Mark Pavelich
1972	Huffer Christiansen



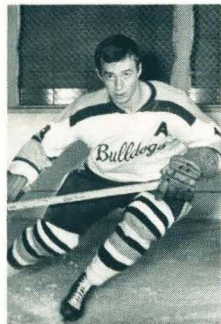
Huffer Christiansen



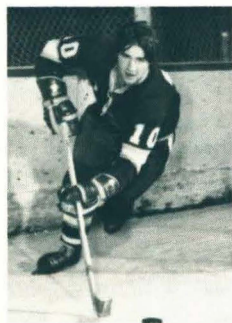
**Keith "Huffer"
Christiansen**



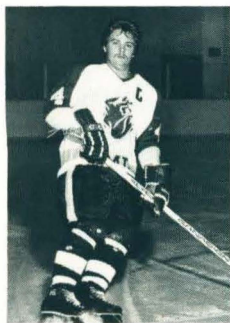
Murray Keogan



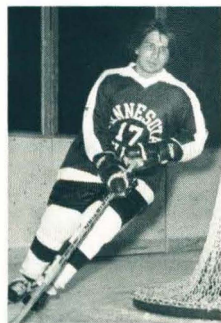
Ron Busniuk



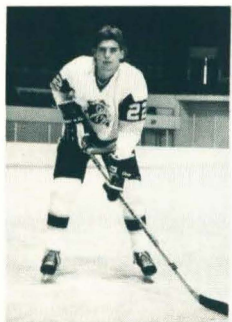
Pat Boutette



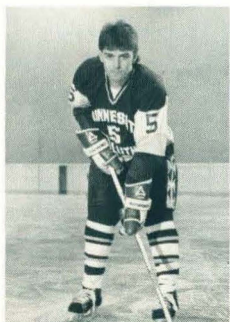
Curt Giles



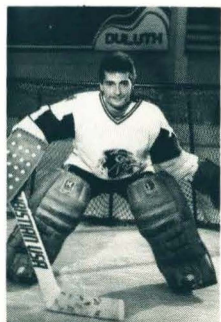
Mark Pavelich



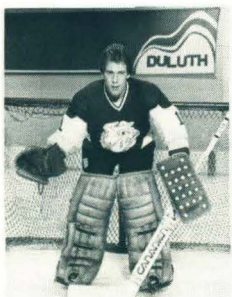
Tom Kurvers



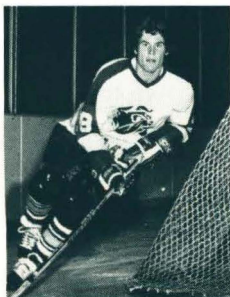
Norm Maciver



Rick Kosti



Bob Mason



John Harrington



Mark Pavelich

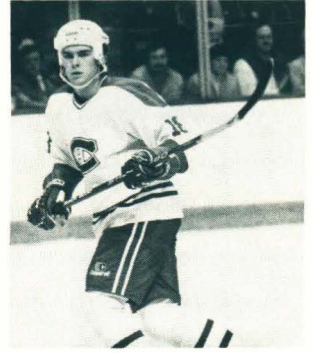
BULLDOGS IN THE NHL



Curt Giles
Minnesota North Stars



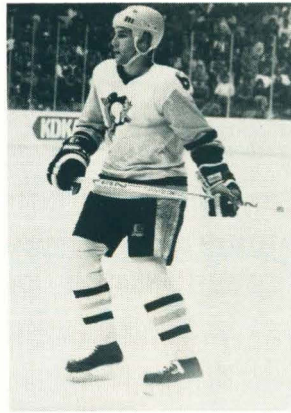
Bob Mason
Washington Capitals



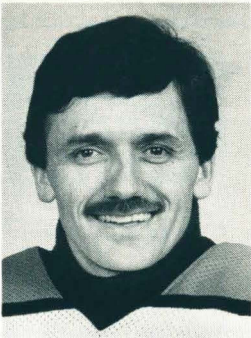
Tom Kurvers
Montreal Canadiens



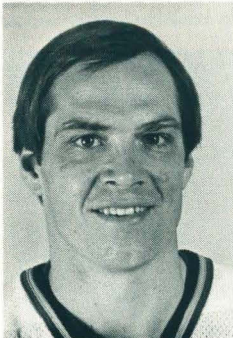
Bill Watson
Chicago Black Hawks



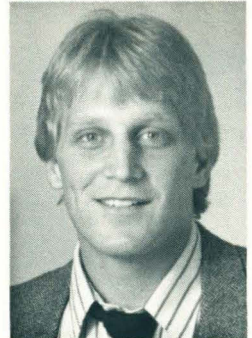
Jim Johnson
Pittsburgh Penguins



Glenn Resch
Philadelphia Flyers



Dave Langevin
Minnesota North Stars



Brett Hull
Calgary Flames

TEAM RECORDS

Game Records

Most Games Played in One Season	48	1984-85
Most Games Won in One Season	36	1984-85
Most Games Lost in One Season	26	1976-77
Most Games Tied in One Season	4	1974-75 & 1978-79
Most Consecutive Wins	11	1/26/85-3/2/85
Longest Unbeaten Streak	13	12/2/78-1/27/79, 10/26/84-12/7/84, 1/26/85-3/9/85
Most Consecutive Losses	11	1/15/68-2/17/68
Most Games Played in One WCHA Season	34	1984-1985
Most Games Won in One WCHA Season	25	1984-1985
Most Games Lost in One WCHA Season	24	1976-1977
Most Games Tied in One WCHA Season	4	1978-1979

Goals

Most Goals in One Game	15	12/17/71 vs. Minnesota
Most Goals in One Period	9	12/17/71 vs. Minnesota (2nd)
Most Goals in One Season	257	1984-1985
Most Power Play Goals in One Season	71	1983-1984
Most Shorthanded Goals in One Season	10	1977-1978 & 1978-1979
Fastest Two Goals	:06	2/16/85 vs. Michigan Tech
Fastest Three Goals	:46	2/23/79 vs. Michigan
Fastest Four Goals	1:19	12/17/71 vs. Minnesota
Fastest Five Goals	2:56	12/17/71 vs. Minnesota
Fastest Six Goals	3:20	12/17/71 vs. Minnesota
Fastest Seven Goals	5:23	12/17/71 vs. Minnesota
Fastest Eight Goals	6:06	12/17/71 vs. Minnesota
Fastest Nine Goals	9:36	12/17/71 vs. Minnesota

Assists

Most Assists in One Period	12	12/17/71 vs. Minnesota (2nd)
Most Assists in One Game	22	12/17/71 vs. Minnesota
Most Assists in One Season	436	1984-1985

Points

Most Points in One Period	21	12/17/71 vs. Minnesota (2nd)
Most Points in One Game	37	12/17/71 vs. Minnesota
Most Points in One Season	693	1984-1985

Penalties

Most Penalties in One Game	20	10/11/80 vs. Lake Superior State
Most Penalty Minutes in One Game	40	10/11/80 vs. Lake Superior State
Most Penalties in One Season	348	1984-1985
Most Penalty Minutes in One Season	723	1970-1971

Miscellaneous

Largest Margin of Victory	12	15-3 vs. Minnesota (12/17/71)
Largest Margin of Defeat	10	13-3 vs. Colorado College (1/15/77)
Most Goals Allowed in One Game	13	13-3 vs. Colorado College (1/15/77)
Most Assists Allowed in One Game	21	13-3 vs. Colorado College (1/15/77)
Most Points Allowed in One Game	34	13-3 vs. Colorado College (1/15/77)
Most Goals Allowed in One Game	219	1976-1977
Most Assists Allowed in One Season	333	1976-1977
Most Points Allowed in One Season	552	1976-1977
Fastest Two Goals By An Opponent	:14	Minnesota (2/10/84)
Best Power Play Percentage	36.5	1985-86
Best Penalty Killing Percentage	16.4	1978-79

INDIVIDUAL RECORDS

Goals

Most Goals in One Game	5	Pokey Trachsel vs. Lake Superior State (11/17/72)
Most Goals in One Season	52	Brett Hull (1985-86)
Most Goals in a Career	100	Tim Milani (1972-76)
Most Goals in One Game by a Defenseman	4	Norm Maciver vs. Providence College (12/28/84)
Most Goals in One Season by a Defenseman	19	Dave Langevin (1975-1976)
Most Goals in a Career by a Defenseman	43	Tom Kurvers (1980-1984)
Most Power Play Goals in One Season	20	Brett Hull (1985-86)
Most Power Play Goals in a Career	46	Bill Oleksuk (1978-82)
Most Shorthanded Goals in One Season	5	John Harrington (1977-1978 & 1978-1979)
Most Shorthanded Goals in a Career	12	John Harrington (1975-79)
Most Goals by a Freshman in One Season	32	Brett Hull (1984-1985)
Most Goals by a Sophomore in One Season	52	Brett Hull (1985-86)
Most Goals by a Junior in One Season	49	Bill Watson (1984-85)
Most Goals by a Senior in One Season	33	Gregg Moore (1982-83)
Most Goals in Playoffs in One Season	9	Bill Watson (1983-84) & Matt Christensen (1984-85)
Most Hat Tricks in One Season	7	Brett Hull (1985-86)
Most Hat Tricks in a Career	10	Brett Hull (1984-86)
Most Multiple-Goal Games in One Season	13	Brett Hull (1985-86)
Fastest Two Goals	:26	Pat Boutette vs. Michigan Tech (1/13/73)
Fastest Hat Trick	2:37	Pat Boutette vs. Michigan Tech (1/13/73)
Fastest Two Shorthanded Goals	:40	John Harrington vs. Michigan (2/11/78)

Assists

Most Assists in One Game	6	Curt Giles vs. Colorado College (12/16/77) and Huffer Christiansen vs. Minnesota (11/19/66)
Most Assists in One Season	60	Bill Watson (1984-85)
Most Assists in a Career	152	Norm Maciver (1982-86)
Most Assists in One Game by a Defenseman	6	Curt Giles vs. Colorado College (12/16/77)
Most Assists in One Season by a Defenseman	58	Tom Kurvers (1983-1984)
Most Assists in a Career by a Defenseman	152	Norm Maciver (1982-86)
Most Assists by a Freshman in One Season	40	Dan Lempe (1976-77)
Most Assists by a Sophomore in One Season	51	Bill Watson (1983-1984)
Most Assists by a Junior in One Season	60	Bill Watson (1984-1985)
Most Assists by a Senior in One Season	58	Tom Kurvers (1983-1984)
Most Assists in Playoffs in One Season	12	Tom Kurvers (1983-84)

Points

Most Points in One Game	6	Curt Giles vs. Michigan State (12/3/77; 1 goal, 5 assists); Curt Giles vs. Colorado College (12/16/77; 6 assists); Huffer Christiansen vs. Minnesota (11/19/66; 6 assists)
Most Points in One Season	109*	Bill Watson (1984-1985; 49 goals, 60 assists)
Most Points in a Career	222	Dan Lempe (1976-80; 79 goals, 143 assists)
Most Points in One Game by a Defenseman	6	Curt Giles vs. Michigan State (12/3/77; 1 goal, 5 assists); Curt Giles vs. Colorado College (12/16/77; 6 assists)
Most Points in One Season by a Defenseman	76	Tom Kurvers (1983-1984; 18 goals, 58 assists)
Most Points in a Career by a Defenseman	192	Tom Kurvers (1980-1984; 43 goals, 149 assists)
Most Points by a Freshman in One Season	64	Dan Lempe (1976-1977; 24 goals, 40 assists)
Most Points by a Sophomore in One Season	86	Bill Watson (1983-84; 35 goals, 51 assists)
Most Points by a Junior in One Season	109*	Bill Watson (1984-85; 49 goals, 60 assists)
Most Points by a Senior in One Season	76	Tom Kurvers (1983-1984; 18 goals, 58 assists)
Longest Scoring Streak	33 games	Bill Watson (1/27/84 - 12/14/84)
Most Points in Playoffs One Season	18	Bill Watson (1984-85)

*Ties NCAA Division 1 Record

INDIVIDUAL RECORDS

Penalties

Most Penalties in One Game	5	Mark Odnokon vs. Minnesota (2/14/76)
Most Penalties in One Season	59	Jim Johnson (1982-83)
Most Penalties in a Career	193	Jim Johnson (1981-85)
Most Penalty Minutes in One Game	20	Pat Francisco vs. Minnesota (1/20/67; 2 misconducts)
Most Penalty Minutes in One Season	118	Jim Johnson (1982-83)
Most Penalty Minutes in a Career	402	Jim Johnson (1981-1985)

Goaltending Records

Most Games Played in One Season	45	Rick Kostı (1984-1985)
Most Games Played in a Career	108	Rick Heinz (1974-1978)
Most Saves in One Game	77	Bill Halbhreder vs. Michigan (12/19/64)
Most Saves in One Season	1,279	Bob Mason (1982-83)
Most Saves in a Career	3,899	Rick Heinz (1974-1978)
Best Goals Against in One Season	3.04	Rick Kostı (1983-1984)
Best Goals Against Average in a career	3.13	Rick Kostı (1983-1985)
Most Assists in One Season	2	Chuck Whalen (1969-70); Ken Turko (1970-1971) and Bill Perkl (1978-1979 & 1979-1980)
Most Assists in a Career	5	Bill Perkl (1977-1981)
Best Saves Percentage in One Season	.901	Bill Halbhreder (1963-1964)
Best Saves Percentage in a Career	.894	Bill Halbhreder (1961-1965) and Rick Kostı (1983-85)
Most Shutouts in a Season	2	Rick Kostı (1983-1984)
Most Shutouts in a Career	3	Bill Halbhreder (1961-1965) and Rick Kostı (1983-85)
Most WCHA Shutouts in a Season	1	By several including Rick Kostı twice (1983-84, 1984-85)
Most Wins in a Season	33	Rick Kostı (1984-1985)

Games Played

Most Games Played in One Season	48	Mark Baron, Matt Christensen, Brett Hull, Danny May, Mark Odnokon and Jim Sprenger (1984-1985)
Most Games Played in a Career	174	Jim Johnson (1981-1985)
Most Consecutive Games Played in a Career	129	Bill Olesuk (1978-1982)

The Last Time . . .

Overtime Game	Northern Michigan 6, UMD 5 (2/21/86)
UMD Was Shut Out	Northeastern 4, UMD 0 (12/15/84)
UMD Shut Out Opponent	UMD 6, Providence College 0 (1/18/86)
UMD Hat Trick	Brett Hull vs. Northern Michigan (3/1/86)
Tied Game	5-5 vs. Denver (3/8/86)

BULLDOG LEADERS

SEASON LEADERS

CAREER LEADERS

Scoring		Games	Points	Goals	Games	Goals
1.	Bill Watson (1984-85)	46	109	1.	Tom Milani (1972-1976)	146 100
2.	Bill Watson (1983-1984)	40	86	2.	Gregg Moore (1979-1983)	148 99
3.	Brett Hull (1985-86)	42	84	3.	Bill Oleksuk (1978-1982)	156 90
4.	Mark Pavelich (1978-1979)	37	79	4.	Bill Watson (1982-1983)	108 89
5.	Matt Christensen (1984-85)	48	77	5.	Scott Carlston (1978-1982)	147 87
6.	Tom Kurvers (1983-1984)	43	76	6.	Brett Hull (1984-86)	90 84
7.	Scott Carlston (1981-1982)	40	74	7.	Dan Lempe (1976-1980)	146 79
8.	John Harrington (1978-1979)	40	72	8.	Matt Christensen (1982-86)	168 76
	Gregg Moore (1982-1983)	45	72	9.	Huffer Christiansen (1963-1967)	102 75
10.	Skeeter Moore (1985-86)	42	69	10.	Monty Jones (1973-1977)	141 70

Goals		Games	Goals	Assists	Games	Assists
1.	Bill Watson (1984-85)	46	49	1.	Norm Maciver (1982-86)	165 152
2.	Bill Watson (1983-1984)	40	35	2.	Tom Kurvers (1980-1984)	164 149
3.	Gregg Moore (1982-1983)	45	33	3.	Dan Lempe (1976-1980)	146 143
4.	Brett Hull (1984-85)	48	32	4.	Matt Christensen (1982-1986)	168 143
	Bob Lakso (1983-1984)	43	32	5.	Curt Giles (1975-1979)	143 135
6.	Gregg Moore (1981-1982)	34	31	6.	Huffer Christiansen (1963-1967)	102 121
	Mark Pavelich (1978-1979)	37	31	7.	Bill Watson (1982-1985)	108 121
8.	Scott Carlston (1981-1982)	40	30	8.	Scott Carlston (1978-1982)	147 116
	Bill Oleksuk (1978-1979)	39	30	9.	Dan Fishback (1979-1983)	154 109
	Lyman Haakstad (1973-1974)	38	30	10.	Gregg Moore (1979-1983)	148 107
	Matt Christensen (1984-1985)	48	30			

Assists		Games	Assists	Goals Against Average	Games	Average
1.	Bill Watson (1984-85)	46	60	1.	Rick Kosti (1983-1985)	83 3.13
2.	Tom Kurvers (1983-84)	43	58	2.	Bob Mason (1981-1983)	69 3.86
3.	Bill Watson (1983-84)	40	51	3.	Bill Halbrehder (1961-1965)	65 3.94
	Norm Maciver (1985-86)	42	51	4.	Jerome Mrazek (1970-1974)	85 4.30
5.	Mark Pavelich (1978-79)	37	48	5.	Glenn Resch (1968-1971)	74 4.35
6.	Matt Christensen (1984-85)	48	47	6.	Bill Perkl (1977-1981)	84 4.62
	Norm Maciver (1984-85)	47	47			
	Curt Giles (1978-79)	38	45			
9.	Pat Boutette (1972-73)	34	45			
10.	Scott Carlston (1981-82)	40	44			

Saves		Games	Saves	Saves	Games	Saves
1.	Bob Mason (1982-1983)	43	1,279	1.	Rick Heinz (1974-1978)	108 3,899
2.	Rick Heinz (1975-1976)	34	1,259	2.	Jerome Mrazek (1970-1974)	85 2,975
3.	Rick Kosti (1984-1985)	45	1,183	3.	Bill Perkl (1977-1981)	84 2,646
4.	Rick Heinz (1977-1978)	33	1,161	4.	Dave LeBlanc (1965-69)	65 2,285
5.	Bill Perkl (1978-1979)	35	1,119	5.	Glenn Resch (1968-1971)	74 2,271
6.	Rick Kosti (1983-1984)	38	1,052	6.	Rick Kosti (1983-1985)	83 2,235

Goals Against Average	Games	Average
1.	Rick Kosti (1983-1984)	38 3.04
2.	Rick Kosti (1984-1985)	45 3.20
3.	Bob Mason (1982-83)	43 3.49
4.	John Hyduke (1985-86)	24 3.60
5.	Mike Cortes (1985-86)	18 3.63
	Bill Halbrehder (1962-1964)	24 3.63

BULLDOG CAREER SCORING LEADERS

PLAYER & YEAR	GAMES	GOALS	ASSISTS	POINTS	PTS. PER GAME
1. Dan Lempe (1976-1980)	146	79	143	*222	1.52
2. Matt Christensen (1982-1986)	168	76	143	219	1.31
3. Bill Watson (1982-1985)	108	89	121	210	*1.94
4. Gregg Moore (1979-1983)	148	99	107	206	1.39
5. Scott Carlston (1978-1982)	147	87	116	203	1.38
5. Tom Milani (1972-1976)	146	*100	98	198	1.36
7. Huffer Christiansen (1963-1967)	102	75	121	196	1.92
8. Tom Kurvers (1980-1984)	164	43	149	192	1.17
9. Norm Maciver (1982-1986)	165	39	*152	191	1.16
10. Bill Oleksuk (1978-1982)	156	90	100	190	1.22
11. Dan Fishback (1979-1983)	154	63	109	172	1.12
12. Curt Giles (1975-1979)	143	36	135	171	1.20
13. Monty Jones (1973-1977)	141	70	83	153	1.09
14. Mike Newton (1972-1976)	144	67	81	148	1.03
15. Bob Lakso (1980-1984)	150	69	76	145	.94
16. Brett Hull (1984-1986)	90	84	59	143	1.59
17. Mark Pavelich (1976-1979)	110	57	85	142	1.29
18. John "Bah" Harrington (1975-1979)	134	65	73	138	1.03
19. Walt Ledingham (1969-1972)	95	66	68	134	1.41
20. Pat Francisco (1963-1967)	105	69	64	133	1.27
21. Pat Boutette (1970-1974)	101	53	78	131	1.30
22. Tom Herzig (1981-1985)	161	57	74	131	.81
23. Keith Hendrickson (1976-1980)	150	35	94	129	.86
23. Lyman Haakstad (1970-1974)	140	59	70	129	.92
25. Skeeter Moore (1983-Present)	110	45	80	125	1.14
25. John Rothstein (1975-1979)	143	56	69	125	.87
27. Glenn Kulyk (1976-1980)	136	44	75	119	.88
27. Mark Odnokon (1982-1986)	124	23	50	73	.59
29. Merv Kiryluk (1970-1974)	128	37	80	117	.91
30. Mike Tok (1962-1965)	98	61	47	108	1.10
31. Dave Langevin (1972-1976)	142	35	72	107	.75
32. Cam Fryer (1969-1972)	94	40	62	102	1.09
33. Mike Krensing (1979-1983)	144	41	59	100	.69
34. Gary DeGrio (1978-1982)	145	59	38	97	.67
35. Gord McDonald (1971-1975)	127	20	76	96	.76
36. Chuck Ness (1969-1973)	121	50	43	93	.77
36. Bruce Olson (1975-1979)	137	35	58	93	.68
38. Bob Hill (1962-1966)	104	25	65	90	.87
38. Pokey Trachsel (1969-1973)	130	32	58	90	.69
40. Bob Bell (1963-1967)	108	38	51	89	.82
41. Jim Johnson (1981-1985)	*174	13	70	83	.48
42. Bruce McLeod (1966-1969)	77	41	40	81	1.05
42. Mark Baron (1980-1985)	124	38	43	81	.65
42. Davey Johnson (1976-1979); (1980-1981)	115	38	43	81	.70
45. Owen Rogers (1962-1966)	86	35	41	76	.88
46. Ron Busniuk (1967-1970)	84	25	50	75	.89
47. Alan Young (1969-1972)	88	31	43	74	.84
48. Murray Keogan (1969-1971)	49	36	37	73	1.49
49. Mark Heaslip (1971-1973)	69	33	38	71	1.03
49. Brian Johnson (1983-Present)	119	16	55	71	.60

* School Record

Current Bulldogs in Boldface

BULLDOG AWARD WINNERS

THE MIKE SEILER AWARD (Most Valuable Player)

1985-86	Norm Maciver	1974-75	Gord McDonald	1964-65	Huffer Christiansen
1984-85	Bill Watson	1973-74	Lyman Haakstad	1963-64	Huffer Christiansen
1983-84	Tom Kurvers	1972-73	Pat Boutette	1962-63	Bill Lenardon
1982-83	Bob Mason	1971-72	Walt Ledingham & Jerome Mrazek	1961-62	John McCormick
1981-82	Bill Oleksuk			1960-61	Mike Mithrush & Bill Lenardon
1980-81	Gary DeGrio	1970-71	Walt Ledingham		
1979-80	Keith Hendrickson	1969-70	Ron Busniuk	1959-60	Mike Haley
1978-79	Curt Giles	1968-69	Ron Busniuk	1958-59	Ron Pretlac
1977-78	Curt Giles & Rick Heinz	1967-68	Rick Newell	1957-58	Jerry Kleisinger
1976-77	Curt Giles	1966-67	Huffer Christiansen	1956-57	Harvey Flaman
1975-76	Rick Heinz	1965-66	Bob Hill		

THE GOLDIE WOLFE AWARD (Most Inspirational)

1985-86	Mark Odnokon
1984-85	Mark Odnokon
1983-84	Mark Odnokon
1982-83	Dan Fishback
1981-82	Bill Oleksuk
1980-81	Davey Johnson
1979-80	Mitch Corbin
1978-79	John Harrington
1977-78	John Harrington
1976-77	Ernie Powell
1975-76	Mike Newton
1974-75	Jim Knapp
1973-74	Gord McDonald
1972-73	Lyman Haakstad
1971-72	Mark Heaslip
1970-71	David Roy & Greg Hubick

ROOKIE OF THE YEAR

1985-86	John Hyduke	1974-75	Kirk McIvor
1984-85	Brett Hull	1973-74	Ernie Powell
1983-84	Rick Kosti	1972-73	Tom Milani
1982-83	Norm Maciver	1971-72	Gord McDonald
1981-82	Jim Johnson	1970-71	Pat Boutette
1980-81	Tom Kurvers	1969-70	Murray Keogan
1979-80	Dan Fishback	1968-69	Glenn Resch
1978-79	Bill Oleksuk	1967-68	Ron Busniuk
1977-78	Chris Knauff	1966-67	Bruce McLeod
1976-77	Dan Lempe	1965-66	Dave LeBlanc
1975-76	Curt Giles	1963-64	Huffer Christiansen

CAPTAIN	ALTERNATE CAPTAIN	CAPTAIN	ALTERNATE CAPTAINS		
1986-87	Guy Gosselin	Brian Johnson, Jim Sprenger, Matt Christensen, Norm Maciver	1970-71	Glenn Resch	Murray Keogan, Jim Maertz
1985-86	Mark Odnokon		1969-70	Ron Busniuk	Glenn Resch, Dan Mahle
1984-85	Jim Johnson, Tom Herzig	Mark Odnokon	1968-69	Bruce McLeod, & Rick Newell	Bruce McLeod, Rick Newell
1983-84	Tom Kurvers	Bill Grillo, Bob Lakso	1967-68	John McKay	Pat Francisco, Bobby Bell
1982-83	Jim Graven	Dan Fishback, Gregg Moore	1966-67	Huffer Christiansen	Huffer Christiansen, Bob Hill
1981-82	Bill Oleksuk	Gary DeGrio, Scott Carlston	1965-66	Owen Rogers	Terry Shercliffe, Mike Tok
1980-81	Davey Johnson	Tom Madson, Bill Oleksuk	1964-65	Owen Rogers	Terry Shercliffe, Owen Rogers
1979-80	Stan Palmer	Glenn Kulyk, Keith Hendrickson	1963-64	Bill McGann	Ron Johnson
1978-79	Curt Giles	John Harrington, John Rothstein	1962-63	Bill Lenardon	Tom Bartholdi, John McCormick
1977-78	Curt Giles	John Rothstein, Carmen Haakstad	1961-62	Bill Lenardon	Grant Standbrook
1976-77	Rick Heinz	Monty Jones, Craig Arvidson	1960-61	Mike Haley	
1975-76	Tom Milani	Dave Langevin, Mike Newton	1959-60	Ron Pretlac	
1974-75	Gord McDonald	Tom Milani, Lyman Haakstad	1958-59	Larry Cronkite	
1973-74	Gord McDonald	Tom Milani, Lyman Haakstad	1957-58	Harvey Flaman & Elmer Schwartz	
1972-73	Jerome Mrazek, Mark Heaslip & Chuck Ness		1956-57	Harvey Flaman	
1971-72	Walt Ledingham	Pat Boutette, Cam Fryer	1955-56	Alex Sisto	
			1954-55	John Bymark	
			1953-54	Bob Boyat	
			1952-53	Wally Heikkinen	
			1951-52	Wally Heikkinen	
			1950-51	Jim Krysiak	
			1949-50	Wally Heikkinen	

Hobey Baker Award Nominees From Minnesota-Duluth



Tom Kurvers

Tom Kurvers

1983-84

Recipient

•

Bill Watson

1984-85

Recipient

•

Brett Hull

1985-86

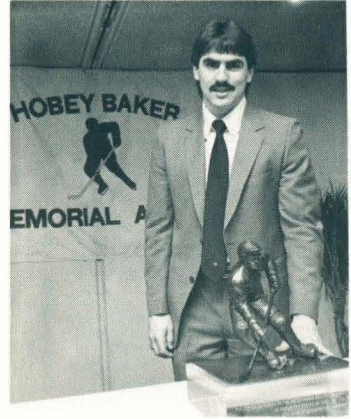
Finalist

•

Norm Maciver

1985-86

Finalist



Bill Watson

Presented annually since 1981 to the outstanding college player in the country, the Hobey Baker Memorial Award has certainly not gone without notice at Minnesota-Duluth.

BULLDOG WCHA AWARD WINNERS

ALL-WCHA

FIRST TEAM SELECTIONS

1985-86	Brett Hull, Right Wing
1985-86	Norm Maciver, Defense
1984-85	Rick Kosti, Goalie
1984-85	Norm Maciver, Defense
1984-85	Bill Watson, Right Wing
1983-84	Tom Kurvers, Defense
1983-84	Bill Watson, Right Wing
1982-83	Bob Mason, Goalie
1978-79	Curt Giles, Defense
1978-79	Mark Pavelich, Center
1977-78	Curt Giles, Defense
1974-75	Gord McDonald, Defense
1970-71	Walt Ledingham, Left Wing
1969-70	Ron Busniuk, Center & Defense
1969-70	Murray Keogan, Center
1966-67	Huffer Christiansen, Center

ALL-WCHA

SECOND TEAM SELECTIONS

1984-85	Matt Christensen, Center
1983-84	Matt Christensen, Center
1983-84	Tom Herzig, Left Wing
1983-84	Rock Kosti, Goalie
1983-84	Bob Lakso, Left Wing
1983-84	Norm Maciver, Defense
1982-83	Gregg Moore, Right Wing
1981-82	Gregg Moore, Right Wing
1979-80	Dan Lempe, Center
1976-77	Dan Lempe, Center
1975-76	Dave Langevin, Defense
1975-76	Tom Milani, Right Wing
1974-75	Tom Milani, Right Wing
1973-74	Gord McDonald, Defense
1972-73	Pat Boutette, Left Wing
1971-72	Walt Ledingham, Left Wing
1970-71	Glenn Resch, Goalie
1965-66	Bob Hill, Defense

WCHA MOST VALUABLE PLAYERS

1984-85	Bill Watson, Right Wing
1983-84	Tom Kurvers, Defense
1982-83	Bob Mason, Goalie
1966-67	Huffer Christiansen, Center

WCHA OUTSTANDING FRESHMEN

1984-85	Brett Hull, Right Wing
1983-84	Rick Kosti, Goalie
1976-77	Dan Lempe, Center
1969-70	Murray Keogan, Center

ALL-TIME MINNESOTA-DULUTH RECORDS

Year	All Games				Conference Games*				Coach
	W	L	T	Pct.	W	L	T	Pct.	
1930-31	0	3	0	.000					Frank Kovach
1931-32	2	5	0	.287	2	2	0	.500	Frank Kovach
1932-46	no hockey								
1946-47	11	6	1	.647	10	3	0	.769	Joe Oven
1947-48	4	3	0	.571					Hank Jensen
1948-49	7	0	0	1.000					Hank Jensen
1949-50	4	3	1	.571	4	3	1	.571	Hank Jensen
1950-51	2	3	0	.400	2	3	0	.400	Hank Jensen
1951-52	2	7	0	.222	0	6	0	.000	Gord Eddolls
1952-53	9	3	0	.750	6	1	0	.857	Gord Eddolls
1953-54	10	7	0	.588	9	1	0	.900	Gord Eddolls
1954-55	9	8	0	.529	7	2	0	.777	Bob Boyat
1955-56	17	6	0	.739	12	0	0	1.000	John Pleban
1956-57	16	4	3	.800	12	0	0	1.000	John Pleban
1957-58	13	6	1	.684	10	0	0	1.000	John Pleban
1958-59	10	9	1	.526	7	0	0	1.000	John Pleban
1959-60	15	5	0	.750	8	0	0	1.000	Ralph Romano
1960-61	15	3	0	.833	6	0	0	1.000	Ralph Romano
1961-62	6	14	2	.300					Ralph Romano
1962-63	7	15	2	.318					Ralph Romano
1963-64	11	14	0	.440					Ralph Romano
1964-65	14	12	1	.538					Ralph Romano
1965-66	7	19	2	.269	3	15	2	.167	Ralph Romano
1966-67	12	16	0	.429	8	15	0	.348	Ralph Romano
1967-68	5	23	0	.179	5	19	0	.208	Ralph Romano
1968-69	6	23	0	.207	3	19	0	.136	Bill Selman
1969-70	13	15	1	.464	10	13	1	.435	Bill Selman
1970-71	16	17	1	.485	10	14	1	.417	Terry Shercliffe
1971-72	16	18	1	.471	15	13	0	.536	Terry Shercliffe
1972-73	19	17	0	.528	13	15	0	.464	Terry Shercliffe
1972-74	21	16	1	.568	13	14	1	.481	Terry Shercliffe
1974-75	10	24	4	.294	9	20	3	.310	Terry Shercliffe
1975-76	15	21	0	.417	12	20	0	.375	Gus Hendrickson
1976-77	9	26	2	.258	6	24	2	.219	Gus Hendrickson
1977-78	14	22	1	.389	12	19	1	.391	Gus Hendrickson
1978-79	22	14	4	.611	18	10	4	.643	Gus Hendrickson
1979-80	17	21	0	.447	15	17	0	.469	Gus Hendrickson
1980-81	17	21	1	.449	11	17	0	.393	Gus Hendrickson
1981-82	16	21	3	.437	9	17	2	.346	Gus Hendrickson
1982-83	28	16	1	.633	14	12	0	.538	Mike Sertich
1983-84	29	12	2	.698	19	5	2	.769	Mike Sertich
1984-85	36	9	3	.781	25	7	2	.765	Mike Sertich
1985-86	26	13	3	.655	21	12	1	.632	Mike Sertich
TOTALS	538	520	42	.504	346	338	24	.506	

* Conferences — Head of the Lakes Scholastic League, 1931-32; City Senior Hockey League, 1946-47; Minnesota Intercollegiate Athletic Conference, 1949-61; Western Collegiate Hockey Association, 1965-Present.

YEAR-BY-YEAR BULLDOG RESULTS

* Indicates Home Games

1930-31	(0-3-0)	Independent
Coach: Frank Kovach		
Captain:		
Duluth Central HS	L	0-3
Eveleth JC	L	2-8
Eveleth JC	L	2-4

1931-32	(2-5-0)	HLSL-2nd-T
Head Coach: Frank Kovach		
Captain: H. Antoskiewicz		
Central H.S.	L	1-3
Duluth JC	L	0-6
Virginia JC	L	2-3
Eveleth JC	L	1-2
Hibbing JC	L	0-2
Duluth Cathedral HS W	5-1	
Duluth Cathedral HS W	4-0	

1946-47	(11-6-1)	SHL-3rd
Head Coach: Hank Jensen		
West End Civic Club	L	2-10
West End Civic Club W	4-3	
West End Civic Club L	2-10	
St. Cloud	L	1-8
St. Cloud	T	3-3

* Duluth went 10-2-0 in league play.
Individual game scores not available.

1947-48	(4-3-0)	Independent
Head Coach: Hank Jensen		
Duluth JC	W	5-3
Duluth JC	W	6-1
Macalester	L	2-3
St. Cloud	L	1-5
St. Cloud	L	1-6
Carleton	W	4-1
Macalester	W	4-2

1948-49	(7-0-0)	Independent
Head Coach: Hank Jensen		
Hamline	W	6-2
St. Cloud	W	3-2
Macalester	W	5-1
Bemidji	W	11-3
Duluth JC	W	7-2
Duluth JC	W	9-2
Carleton	W	3-0

1949-50	(4-3-1)	MIAC
Coach: Hank Jensen		
Captain: Wally Heikala		
St. Thomas	L	2-3
St. Olaf	W	4-0
Augsburg	W	6-1
Hamline	W	6-3
St. John's	L	1-2
Augsburg	W	6-1
St. Thomas	L	4-5
Macalester	T	1-1

1950-51	(2-3-0)	MIAC
Head Coach: Hank Jensen		
Captain: Jim Krysiak		
St. John's	L	2-3
St. Thomas	L	4-11
Macalester	L	2-6
Hamline	W	8-1
St. Olaf	W	6-3

1951-52	(2-7-0)	MIAC
Head Coach: Gord Eddolls		
Captain: Wally Heikinen		
St. Cloud	W	5-4
St. Thomas	L	1-4
St. John's	L	0-9
St. Thomas	L	3-6
402 Lounge	L	2-6
Port Arthur Tech	W	6-3
Macalester	L	4-5
Macalester	L	6-7
St. John's	L	2-6

1952-53	(9-3-0)	MIAC-1st
Head Coach: Gord Eddolls		
Captain: Wally Heikinen		
Minnesota	L	2-14
Michigan Tech	L	1-8
St. Cloud	W	5-3
St. John's	W	6-5
Gustavus	W	16-0
St. Cloud	W	3-2
Hamline	W	5-4
Macalester	W	5-2
St. John's	L	8-1
St. Thomas	L	1-5
Gustavus	W	FFT
Port Arthur Tech	W	4-3

1953-54	(10-7-0)	MIAC-1st
Head Coach: Gord Eddolls		
Captain: Bob Boyat		
Dartmouth	L	4-5 OT
Hamline	W	7-1
Port Arthur Tech	W	10-4
Hamline	W	4-1
Michigan Tech	L	5-6
Michigan Tech	L	3-10
Gustavus	W	7-3
Michigan Tech	L	1-2
St. John's	W	3-1
Macalester	W	5-3
St. John's	W	3-0
St. Thomas	W	4-3
St. Thomas	L	2-4
Gustavus	W	5-5
Macalester	W	6-5 OT
Fort William	L	4-5
Fort William	L	7-9

1954-55	(9-8-0)	MIAC-2nd
Head Coach: Bob Boyat		
Captain: John Bymark		
North Dakota	L	0-11
North Dakota	L	2-8
*Fort Frances	W	6-4
*North Dakota	L	2-15
*North Dakota	L	2-9
*Michigan Tech	L	4-8
*Michigan Tech	L	2-6
St. Thomas	W	5-3
St. John's	W	9-2
*Gustavus	W	3-1
*Macalester	W	6-2
Macalester	W	3-0
Hamline	W	4-1
*St. John's	L	4-5
*St. Thomas	L	2-5
*Hamline	W	7-1
*Port Arthur Tech	W	10-3

1955-56	(17-6-0)	MIAC-1st
Head Coach: Connie Pleban		
Captain: Alex Sisto		
Fort Francis	W	8-2
North Dakota	L	1-3
North Dakota	L	0-6
Port Arthur	L	
North Stars	L	3-8
Eveleth Rangers	W	9-3
Eveleth Rangers	W	4-3
U.S. Olympics	L	0-11
Regina Pats	L	1-5
Gustavus	W	9-2
St. Thomas	W	7-2
Hamline	W	4-0
Macalester	W	7-2
Augsburg	W	8-2
St. John's	W	8-0
Michigan Tech	W	3-2
Michigan Tech	W	9-2
Macalester	W	10-2
Gustavus	W	5-2
Hamline	W	8-1
St. Thomas	W	6-0
St. John's	W	7-3
Augsburg	W	15-2
Taconite	L	4-5

1956-57	(16-4-3)	MIAC-1st
Coach: Connie Pleban		
Captain: Harvey Flaman		
Port Arthur	W	6-4
St. Boniface	T	3-3

Winnipeg	T	4-4
Warroad	L	4-8
U.S. Nationals	L	6-8
Hamline	W	8-0
Macalester	W	5-2
St. Thomas	W	4-0
Michigan Tech JV	W	7-0
Michigan Tech JV	W	11-3
St. Thomas	W	11-4
Macalester	W	17-0
Hamline	W	2-1
St. John's	W	6-1
St. John's	W	4-3
Michigan Tech	L	3-6
Michigan Tech	W	6-6
Gustavus	W	10-1
North Dakota JV	W	8-1
North Dakota JV	L	4-5 OT
Gustavus	W	8-0
Augsburg	W	FFT
Augsburg	W	FFT

1957-58	(13-6-1)	MIAC-1st
Head Coach: Connie Pleban		
Captain: Harvey Flaman, Elmer Schwartz		

Minneapolis		
Bungalows	L	7-4
Michigan Tech	W	5-3
Michigan Tech	L	0-6
Harvard	W	5-2
North Dakota	L	1-5
North Dakota	L	2-7
Hamline	W	8-1
U.S. Nationals	L	5-6
St. John's	W	7-2
Macalester	W	17-1
Gustavus	W	24-2
Gustavus	W	FFT
Macalester	W	13-1
Hamline	W	5-1
St. Thomas	W	3-1
Michigan Tech	T	3-3
Michigan Tech	L	3-6
St. Thomas	W	3-1
St. John's	W	10-3
Warroad	L	5-6

1958-59	(10-9-1)	MIAC-1st
Head Coach: Connie Pleban		
Captain: Larry Cronkhte		
Michigan Tech	L	0-7
Michigan Tech	L	1-12
*U.S. Nationals	L	2-6
*Dartmouth	W	9-5
*Dartmouth	W	3-2
*Hamline	W	7-2
*North Dakota	L	2-4
*North Dakota	L	1-4
*St. Thomas	W	4-2
*St. John's	W	7-0
*Michigan Tech	L	3-6
*Michigan Tech	L	0-10
*College All Stars	W	9-3
*College All Stars	T	4-4
Augsburg	W	15-3
*Macalester	W	15-1
Gustavus	W	FFT
*Concordia	W	16-0
*Warroad	L	5-6
*Warroad	L	2-6

1959-60	(15-5-0)	MIAC-1st
Coach: Ralph Romano		
Captain: Ron Pretiac		
*Fort William	W	7-2
*Fort William	W	5-2
North Dakota	W	3-2
North Dakota	L	2-13
Warroad	L	1-7
*Macalester	W	17-0
Concordia	W	9-2
*St. John's	W	6-3
*St. Thomas	W	4-3
Augsburg	W	10-0
*Michigan Tech JV	W	6-5
*Michigan Tech JV	W	3-2
*U.S. Olympic	L	3-8
*Japanese Olympic	W	7-3
*St. Mary's	W	16-0
Hamline	W	11-1
Gustavus	W	3-0
*Warroad	W	4-2
*Warroad	L	2-6
*Minneapolis		
Millers	L	5-6

1960-61 (15-3-0) MIAC-1st

Head Coach: Ralph Romano
 Captain: Mike Haley

*Fort William	W	13-1
*U.S. Nationals	W	7-4
*Colorado College	W	6-4
*Concordia	W	17-0
*Macalester	W	3-2
*Manitoba	W	9-2
*Manitoba	W	6-1
*St. Thomas	W	3-0
*Port Arthur	L	2-4
*Port Arthur	W	4-2
*U.S. Nationals	L	3-6
*Gustavus	W	11-1
*Hamline	W	8-0
*Michigan Tech JV	W	7-3
*Augsburg	W	19-0
*Warroad	L	2-12

1961-62 (6-14-2) Indep

Head Coach: Ralph Romano
 Captain: Bill Lenardon

*Fort William	W	3-2
*Fort William	W	3-2
*Toronto	W	4-3
*Toronto	W	5-3
Michigan State	L	2-5
Michigan State	L	1-6
Denver	L	1-3
St. Thomas	L	2-11
*St. Thomas	W	7-3
*Fort Frances	L	1-6
*Warroad	L	1-7
*Warroad	L	6-8
Minnesota	L	1-6
*Minnesota	L	4-6
Michigan Tech	L	1-7
Michigan Tech	L	3-4
*Junior "A"		
All Stars	T	2-2
*Manitoba	T	4-4
*Manitoba	W	6-4
*Michigan Tech	L	2-12
*Michigan Tech	L	2-5
*Norway Nationals	L	3-5

1962-63 (7-15-2) Indep

Coach: Ralph Romano
 Captain: Bill Lenardon

*Michigan Tech	L	0-3
*Michigan Tech	L	2-5
Northern Dakota	L	1-4
North Dakota	L	1-7
Minnesota	L	2-7
*North Dakota	W	4-1
*North Dakota	L	3-7
*Minnesota	L	2-7
*Minnesota	T	4-4
*St. Thomas	W	15-0
Michigan State	L	4-5
Michigan State	W	4-3
Denver	L	1-4
Denver	W	4-2
Colorado College	L	5-8
*Port Arthur	W	7-0
*Port Arthur	T	4-4
Michigan Tech	L	2-7
Michigan Tech	L	3-6
*Michigan State	L	4-5 OT
*Michigan State	L	1-4
*Minnesota	L	1-7
*Manitoba	W	4-2
*Manitoba	W	2-1

1963-64 (11-14-0) Indep

Head Coach: Ralph Romano
 Captain: Bill McGann

Minnesota	W	5-2
*Minnesota	W	7-5
*U.S. Olympic	L	4-7
*Michigan Tech	L	2-3
*Michigan Tech	W	3-1
*North Dakota	L	1-2
*North Dakota	L	2-5
*West Point	W	7-3
*Michigan	L	2-7
*Michigan	L	4-8
*Michigan State	W	4-2
*Michigan State	W	6-1
Minnesota	W	6-3
Minnesota	L	1-4
Colorado College	L	5-6
Colorado College	W	6-3
Michigan Tech	L	1-3
Michigan Tech	L	2-4
Michigan State	W	6-1
Michigan State	L	2-4
*Warroad	L	2-7
North Dakota	L	5-8
North Dakota	L	0-5
*Manitoba	W	6-1
*Manitoba	W	5-0

1964-65 (14-12-1) Indep

Head Coach: Ralph Romano
 Captain: Owen Rogers

North Dakota	L	4-5
North Dakota	L	5-6 OT
Colorado College	W	4-3 OT
Colorado College	W	5-3
Minnesota	W	6-5
Port Arthur	T	6-6
*Colgate	W	10-3
*McGill	W	10-1
*R.P.I.	W	9-2
Michigan Tech	L	3-6
Michigan Tech	L	3-4
Michigan	L	5-6 OT
Michigan	L	2-4
Port Arthur	W	6-3
Port Arthur	W	4-1
Michigan State	L	4-5 OT
Michigan State	W	7-1
Colorado College	W	3-2 OT
Minnesota	L	3-9
Minnesota	L	2-5
North Dakota	W	7-5
North Dakota	L	3-9
Minnesota	W	4-2
Lakehead Univ.	W	13-0
Lakehead Univ.	W	11-1

* R.P.I. Tournament

1965-66 (7-19-2) WCHA-8th

Head Coach: Ralph Romano
 Captain: Owen Rogers

*Michigan Tech	L	1-5
*Michigan Tech	L	2-3
*North Dakota	L	4-5 OT
*North Dakota	L	5-7
*Port Arthur	W	7-3
*Port Arthur	W	6-2
Eastern Olympic	L	4-8
*Providence	W	4-1
*Brown	L	4-6
*Minnesota	L	4-5
*Manitoba	W	3-1
*Manitoba	L	5-7
Denver	L	1-6
Denver	L	2-4
Michigan State	L	5-6 OT
Michigan State	L	2-5
*Denver	L	1-8
*Denver	T	2-2
Michigan Tech	L	2-5
Michigan Tech	L	1-6 L
Minnesota	L	3-5
North Dakota	W	3-2 OT
North Dakota	L	2-5
*Michigan	W	7-6
*Michigan	L	3-8
Colorado College	T	4-4
Colorado College	W	6-3
#Michigan Tech	L	3-9

* Brown Tournament

WCHA Playoff

1966-67 (12-16-0) WCHA-6th

Head Coach: Ralph Romano
 Captain: Keith Christiansen

*Minnesota	W	8-1
*North Dakota	L	3-6
*North Dakota	L	2-6
*Denver	L	1-2
*Denver	L	4-6
*Brown	W	9-4
*Brown	W	4-1
*West Point	W	10-2
Michigan Tech	L	3-5
Michigan Tech	L	2-10
North Dakota	W	3-2
North Dakota	L	2-4
Minnesota	L	4-9
Minnesota	W	7-4
*Michigan State	W	6-5 2OT
*Michigan State	W	7-3
*Wisconsin	W	6-1
*Michigan Tech	L	4-6
*Michigan Tech	L	3-5
Michigan	L	5-6
Colorado College	W	5-4
Colorado College	W	6-2
Denver	L	3-8
Denver	L	1-6
*Colorado College	W	7-3
*Colorado College	L	2-3
†Michigan Tech	L	4-6

†WCHA Playoffs

1967-68 (5-23-0) WCHA-8th

Head Coach: Ralph Romano
 Captain: John McKay

*Minnesota	L	1-5
*Denver	L	1-6
*North Dakota	L	1-4
*North Dakota	L	3-4
Michigan State	W	5-3
Michigan State	L	2-6
Minnesota	L	2-7
*Boston College	L	3-5
*Colorado College	W	7-1
*Colorado College	L	2-3
Wisconsin	W	6-1
*U.S. Olympic		
Team	L	2-4
Colorado College	L	2-4
Colorado College	W	5-3
*Denver	L	1-5
Michigan Tech	L	2-7
*Michigan Tech	L	0-5
*Michigan Tech	L	2-8
*Michigan	L	1-4
*Michigan	L	5-7
Denver	L	2-10
Denver	L	1-6
Minnesota	L	0-4
*Minnesota	L	5-6
North Dakota	W	3-2
North Dakota	L	3-6
†Denver	L	4-11

†WCHA Playoffs

1968-69 (6-23-0) WCHA-8th

Head Coach: Bill Selman
 Captains: Bruce McLeod, Rick Newell

*Minnesota	W	5-3
*Minnesota	L	1-3
*North Dakota	L	1-4
*North Dakota	L	4-7
*Laurentian	L	3-5
*Laurentian	W	1-6
*Denver	L	3-4
*Denver	L	4-7
*Cornell	L	1-2 2OT
*Colgate	W	7-5
*Boston University	L	4-10
*Boston University	W	5-2
Michigan	L	2-8
Michigan	L	5-10
*Michigan Tech	L	3-4
*Michigan Tech	L	2-6
Denver	L	2-8
Denver	L	2-8
*Michigan State	L	3-6
*Michigan State	W	6-1
Minnesota	L	3-4
Minnesota	L	1-6
*Colorado College	L	2-3
*Colorado College	W	3-2
Michigan Tech	L	4-10
Michigan Tech	L	2-4
North Dakota	L	2-6
North Dakota	L	1-5
†Denver	L	4-4

*Syracuse Holiday Tournament

†WCHA Playoffs

1969-70 (13-15-1) WCHA-E

Head Coach: Bill Selman
 Captain: Ron Busniuk

*Minnesota	W	7-3
*Minnesota	L	2-3
North Dakota	L	3-4
North Dakota	W	3-0
*New Hampshire	W	7-5
*Michigan Tech	L	1-3
*North Dakota	W	5-4
*North Dakota	W	5-2
*Denver	L	3-6
*Denver	W	3-2
Minnesota	L	1-2 OT
Minnesota	L	3-5
*Ohio	W	10-3
*Ohio	W	11-3
Michigan Tech	W	4-3
Michigan Tech	T	2-2
*Wisconsin	L	5-6
*Wisconsin	W	4-2
*Michigan	W	6-5
*Michigan	W	5-2
Colorado College	L	2-6
Denver	W	8-4
Denver	L	3-5
Colorado College	L	3-6
Michigan State	L	5-8
Michigan State	L	3-5
*Michigan Tech	L	3-6
*Michigan Tech	L	3-6

†*MinnesotaL 2- 3 OT
 *UMD Christmas City Tournament
 †WCHA Playoffs

1970-71 (16-17-1) WCHA-6th

Head Coach: Terry Shercliffe
 Captain: Glenn Resch
 *U.S. National
 TeamL 4- 6
 *MinnesotaW 6- 3
 *MinnesotaW 7- 2
 North DakotaW 5- 4
 North DakotaL 5- 6
 *ProvidenceW 10- 3
 *CalgaryW 5- 3
 *Michigan Tech.W 6- 1
 WisconsinL 1- 2
 WisconsinW 6- 4
 *DenverL 4- 7
 *DenverW 4- 3
 *Colorado College ...W 10- 4
 *Colorado College ...W 6- 4
 MinnesotaL 1- 5
 MinnesotaL 1- 3
 *U.S. National
 TeamL 2- 4
 U.S. National
 TeamW 4- 3
 *Michigan Tech.L 1- 5
 *Michigan Tech.L 2- 3
 MichiganW 8- 5
 MichiganL 3- 4
 *Michigan StateL 4- 5
 *Michigan StateW 8- 4
 *Notre DameT 5- 5 OT
 *Notre DameW 6- 3
 DenverL 2- 7
 DenverL 1- 6
 *North DakotaL 3- 6
 *North DakotaW 5- 3
 Michigan Tech.L 3- 5
 Michigan Tech.L 2- 6
 †Michigan StateW 4- 3
 †DenverL 3- 9

1971-72 (16-18-1) WCHA-5th

Head Coach: Terry Shercliffe
 Captain: Walt Ledingham
 *U.S. Olympic
 TeamL 1- 5
 *MinnesotaW 4- 1
 *MinnesotaW 5- 2
 North DakotaW 3- 2
 North DakotaL 3- 4
 *Boston CollegeL 3- 4
 *ManitobaW 6- 2
 *Lake Superior
 StateT 3- 3 OT
 Colorado College ...W 6- 5
 Colorado College ...L 2- 8
 MinnesotaL 15- 3
 MinnesotaL 3- 5
 *DenverW 3- 2
 *DenverL 3- 8
 *Czech Olympic
 TeamL 2- 5
 *WisconsinL 5- 6 OT
 *WisconsinW 4- 3
 *MichiganW 9- 3
 *MichiganW 7- 3
 Michigan Tech.L 5- 6
 Michigan Tech.L 3- 7
 DenverW 4- 2
 DenverL 1- 4
 Notre DameW 5- 2
 Notre DameW 6- 4
 *North DakotaW 7- 5
 *North DakotaL 2- 3
 *Michigan StateL 1- 6
 Michigan StateL 1- 5
 *Michigan Tech.W 5- 2
 *Michigan Tech.L 5- 7
 *Colorado College ...W 8- 5
 *Colorado College ...L 4- 10
 †Michigan StateL 2- 4
 †Michigan StateL 2- 4
 *UMD Christmas City Tournament
 †WCHA Playoffs

1972-73 (19-17-0) WCHA-8th

Head Coach: Terry Shercliffe
 Captains: Mark Heaslip, Jerome Mrazek, Chuck Ness
 Michigan Tech.L 4- 6
 Michigan Tech.L 4- 5 OT
 *Michigan StateL 3- 6
 *Michigan StateW 5- 4

*North DakotaW 6- 1
 *North DakotaL 4- 5
 *Lake Superior
 StateW 11- 5
 *Air ForceW 7- 2
 *Boston University ...L 2- 7
 Colorado College ...W 5- 2
 Colorado College ...W 6- 4
 North DakotaL 6- 8
 North DakotaL 2- 4
 *DenverL 5- 10
 *DenverW 3- 1
 @ProvidenceW 5- 4
 @CarletonW 9- 2
 @R P IW 3- 2
 *Colorado College ...W 6- 5
 *Colorado College ...W 6- 1
 *Michigan Tech.W 4- 2
 *Michigan Tech.W 7- 6 OT
 DenverL 1- 6
 DenverL 2- 3
 *MinnesotaL 2- 3
 *MinnesotaW 7- 5
 MichiganW 7- 5
 MichiganW 9- 8 OT
 WisconsinL 2- 6
 WisconsinL 2- 9
 MinnesotaW 8- 0
 MinnesotaW 5- 3
 Notre DameL 2- 8
 Notre DameL 1- 4
 †DenverL 4- 5
 †DenverL 2- 4
 *UMD Christmas City Tournament
 @R P I Tournament
 †WCHA Playoffs

1973-74 (21-16-1) WCHA-6th

Head Coach: Terry Shercliffe
 Captain: Gord McDonald
 *MinnesotaW 4- 3
 *Lake Superior
 StateW 3- 2
 *Lake Superior
 StateW 4- 3
 Michigan Tech.L 1- 10
 Michigan Tech.L 1- 4
 *Colorado College ...L 2- 7
 *Colorado College ...L 2- 7
 *Bemidji StateW 10- 2
 *St. Scholastica ...W 7- 3
 *R P IW 9- 1
 North DakotaL 3- 4
 North DakotaL 3- 4
 MinnesotaT 3- 3 OT
 MinnesotaL 5- 6
 *DenverW 7- 2
 *DenverW 6- 3
 *WisconsinL 3- 6
 *WisconsinW 4- 1
 *MichiganW 9- 5
 *MichiganW 5- 3
 Colorado College ...L 5- 8
 Colorado College ...W 8- 2
 Michigan StateL 2- 6
 Michigan StateL 1- 5
 *Michigan Tech.W 6- 3
 *Michigan Tech.L 3- 5
 *North DakotaW 4- 2
 *North DakotaW 5- 2
 †DenverL 2- 3
 †DenverL 2- 5
 @St. LouisW 6- 3
 @VermontW 7- 4
 *UMD Christmas City Tournament
 †WCHA Playoffs
 @National Invitational Hockey
 Tournament

1974-75 (10-24-4) WCHA-8th

Head Coach: Terry Shercliffe
 Captain: Gord McDonald
 *MinnesotaW 4- 3
 *MinnesotaL 2- 3 OT
 *Michigan Tech.L 4- 7
 *Michigan Tech.L 3- 6
 Colorado College ...L 2- 6
 Colorado College ...L 4- 6
 WisconsinL 2- 4
 WisconsinL 5- 7
 *DenverT 3- 3 OT
 *DenverL 3- 4
 MinnesotaL 4- 5
 MinnesotaL 2- 3 OT
 North DakotaW 6- 1
 North DakotaW 3- 2
 *Michigan StateL 3- 4
 *Michigan StateL 5- 6 OT

*Boston University ...L 6- 7
 *Ohio StateT 3- 3
 DenverW 6- 4
 DenverW 6- 5
 *WisconsinL 4- 6
 *WisconsinW 8- 5
 *MinnesotaL 5- 6
 *MinnesotaL 6- 7 OT
 Michigan StateL 3- 6
 Michigan StateW 8- 5
 *MichiganL 2- 9
 *MichiganW 3- 2
 Michigan Tech.L 3- 10
 Michigan Tech.W 7- 4
 *Colorado College ...L 6- 7 OT
 *Colorado College ...L 3- 4 OT
 Notre DameL 5- 7
 Notre DameT 4- 4 OT
 *North DakotaT 6- 6 OT
 *North DakotaW 7- 5
 †MinnesotaL 0- 6
 †MinnesotaL 2- 4
 *St. Louis Tournament
 †WCHA Playoffs

1975-76 (15-21-0) WCHA-9th

Head Coach: Gus Hendrickson
 Captain: Tom Milani
 *U.S. Olympic
 TeamW 4- 3 OT
 *DenverW 4- 3
 *DenverW 9- 4
 MinnesotaL 4- 5 OT
 MinnesotaL 2- 4
 *WisconsinW 9- 6
 *WisconsinW 4- 2
 *North DakotaL 4- 5
 *North DakotaW 4- 2
 Colorado College ...L 2- 3 OT
 Colorado College ...L 3- 6
 Michigan Tech.L 1- 6
 Michigan Tech.L 4- 8
 *Michigan StateW 5- 2
 *Michigan StateL 5- 8
 *Michigan StateL 4- 5
 *YaleW 11- 4
 MichiganL 6- 8
 MichiganW 6- 2
 *BowdoinW 8- 7
 WisconsinL 4- 10
 WisconsinW 3- 2
 *Notre DameL 3- 4 OT
 *Notre DameW 4- 3
 *MinnesotaL 3- 5
 *MinnesotaL 3- 6
 North DakotaL 2- 6
 North DakotaW 5- 2
 *Colorado College ...L 4- 6
 *Colorado College ...W 3- 2
 DenverW 4- 2
 DenverL 4- 8
 Notre DameL 5- 7
 Notre DameL 4- 10
 *Michigan Tech.L 5- 6 OT
 *Michigan Tech.L 5- 7

1976-77 (9-26-2) WCHA-10th

Head Coach: Gus Hendrickson
 Captain: Rich Heinz
 MinnesotaL 5- 9
 *Lake Superior
 StateW 7- 4
 *Lake Superior
 StateW 8- 3
 MinnesotaL 3- 4
 MinnesotaT 3- 3 OT
 *WisconsinL 4- 5
 *WisconsinL 1- 7
 North DakotaL 2- 5
 North DakotaL 6- 9
 *Colorado College ...W 6- 5
 *Colorado College ...L 5- 7
 DenverL 2- 6
 MichiganL 3- 7
 MichiganL 1- 7
 Michigan Tech.L 3- 4
 Michigan Tech.T 4- 4 OT
 *Boston University ...L 3- 7
 *Boston University ...W 6- 4
 *Notre DameL 5- 7
 *Notre DameL 2- 6
 Colorado College ...W 6- 5 OT
 Colorado College ...L 3- 13
 *North DakotaW 8- 5
 *North DakotaW 7- 3
 *DenverW 6- 5
 *DenverL 1- 3

Michigan State	L	3- 6
Michigan State	L	3- 8
*Minnesota	L	4- 6
*Minnesota	L	3- 7
Wisconsin	L	4- 7
Wisconsin	L	4- 6
*Michigan	L	4- 9
*Michigan	L	3- 9
*Michigan Tech.	W	7- 4
*Michigan Tech.	L	1- 2 OT

1977-78 (14-22-1) WCHA-7th		
Head Coach: Gus Hendrickson		
Captain: Curt Giles		
Notre Dame	W	5- 3
Minnesota	L	2- 5
Minnesota	L	2- 3
*North Dakota	L	3- 5
*North Dakota	W	5- 4 OT
Michigan Tech.	L	1- 4
Michigan Tech.	L	5- 6
Wisconsin	L	3- 4
Wisconsin	L	2- 6
*Denver	L	3- 4 OT
*Denver	L	4- 5 OT
*Michigan State	W	8- 5
*Michigan State	W	10- 6
Colorado College	W	7- 6
Colorado College	W	8- 6
*Brown	W	4- 1
*Providence	L	5- 9
Michigan State	L	2- 3 OT
Michigan State	L	7- 5
Wisconsin	T	3- 3 OT
Wisconsin	L	3- 5
Denver	L	0- 4
Denver	L	2- 8
*Minnesota	L	2- 4
*Minnesota	L	5- 6
North Dakota	W	5- 4
North Dakota	L	2- 7
*Michigan	W	8- 7 OT
*Michigan	W	6- 1
Notre Dame	L	3- 7
Notre Dame	W	5- 4
*Colorado College	W	8- 5
*Colorado College	L	3- 6
*Michigan Tech.	W	5- 3
*Michigan Tech.	L	2- 9
†Wisconsin	L	2- 9
†Wisconsin	L	4- 5
†WCHA Playoffs		

1978-79 (22-14-4) WCHA-3rd		
Head Coach: Gus Hendrickson		
Captain: Curt Giles		
*Lake Superior	L	2- 3
*Lake Superior	W	10- 4
Michigan	L	4- 6
Michigan	W	5- 2
*North Dakota	W	5- 4 OT
*North Dakota	W	4- 2
Denver	L	6- 8
Denver	L	5- 8
*Minnesota	L	4- 5 OT
*Minnesota	W	5- 4
Wisconsin	T	3- 3 OT
Wisconsin	L	3- 6
*Colorado College	L	4- 6
*Colorado College	W	8- 3
Michigan Tech.	W	4- 3 OT
Michigan Tech.	W	7- 3
*Harvard	W	8- 3
*Yale	W	6- 5 OT
*Denver	W	6- 1
*Denver	W	7- 1
Minnesota	T	6- 6 OT
Minnesota	W	6- 1
Colorado College	W	7- 4
Colorado College	W	6- 4
*Wisconsin	T	5- 5 OT
*Wisconsin	W	10- 6
North Dakota	L	4- 6
North Dakota	W	7- 4
*Notre Dame	L	3- 7
*Notre Dame	L	6- 7 OT
Michigan State	L	5- 6
Michigan State	W	5- 3
*Michigan	W	12- 3
*Michigan	T	3- 3 OT
*Michigan Tech.	W	5- 3
*Michigan Tech.	W	6- 5
†Denver	W	5- 2
†Denver	L	2- 4 OT
†Minnesota	L	1- 2
†Minnesota	L	3- 6
†WCHA Playoffs		

1979-80 (17-21-0) WCHA-6th		
Head Coach: Gus Hendrickson		
Captain: Stan Palmer		
U.S. Olympic		
Team	L	0- 4
Michigan	L	6-11
*Notre Dame	L	4- 8
*Notre Dame	L	4- 8
Wisconsin	W	4- 7
*Minnesota	L	4- 5
*Minnesota	W	6- 3
Denver	W	5- 4 OT
Denver	L	3- 5
Colorado College	L	6- 7
Colorado College	W	5- 3
*North Dakota	W	5- 4 OT
*North Dakota	L	3- 4 OT
Michigan Tech.	L	4- 7
Michigan Tech.	W	5- 4 OT
*Ohio State	L	1- 6
*Providence	L	3- 4
*Brown	W	7- 3
*St. Lawrence	W	5- 2
*Gorky, USSR	L	4- 6
*Michigan State	L	4- 6
*Michigan State	W	8- 7 OT
North Dakota	L	3- 7
North Dakota	L	1- 5
*Denver	W	10- 5
*Denver	L	5- 7
*Colorado College	W	7- 3
*Colorado College	L	2- 7
*Japanese Olympic	W	5- 4
Notre Dame	W	7- 6
Notre Dame	W	9- 8
*Wisconsin	W	5- 3
*Wisconsin	W	8- 4
Minnesota	L	5- 7
Minnesota	W	7- 4
*Michigan Tech.	L	7- 5
*Michigan Tech.	L	3- 6
†Colorado College	L	3- 4
†Colorado College	L	6- 7
*Old Colony Invitational		
†WCHA Playoffs		

1980-81 (17-21-1) WCHA-8th		
Head Coach: Gus Hendrickson		
Captain: Davey Johnson		
*Ferris State	T	5- 5 OT
*Ferris State	W	5- 2
*Michigan Tech.	L	2- 4
*Michigan Tech.	W	7- 4
North Dakota	L	4- 5 OT
North Dakota	W	7- 3
*Minnesota	W	8- 0
*Minnesota	W	6- 5
*Providence	W	4- 3
*Providence	W	9- 8 OT
Colorado College	L	5- 8
Colorado College	L	5- 8
*Wisconsin	W	3- 2
*Wisconsin	L	3- 5
Michigan Tech.	L	3- 7
Michigan Tech.	W	6- 3
*Princeton	W	3- 2
*Princeton	L	0- 1 OT
*Harvard	L	4- 6
*Clarkson	L	0- 6
*Bowling Green	W	7- 4
Michigan State	L	0- 4
Michigan State	W	4- 3
*Colorado College	W	6- 5 OT
*Colorado College	L	2- 7
Wisconsin	L	2- 7
Wisconsin	L	3- 4
*Notre Dame	L	4- 8
*Notre Dame	W	6- 4
Denver	L	6- 9
Denver	L	4- 7
*Michigan	L	2- 9
*Michigan	L	5- 6
Minnesota	L	2- 5
Minnesota	L	1- 9
*North Dakota	W	7- 3
*North Dakota	W	7- 6
†Minnesota	L	1- 5
†Minnesota	W	7- 5
*Colonial Bank Invitational		
†WCHA Playoffs		

1981-82 (16-21-3) WCHA-5th		
Head Coach: Gus Hendrickson		
Captain: Bill Oleksuk		
*U.S. Invitational	W	8- 3
*Chicago Circle	W	6- 2
*Chicago Circle	W	9- 4

*Wisconsin	L	1- 6
*Wisconsin	L	1- 6
North Dakota	L	1- 4
North Dakota	W	5- 4
Michigan Tech.	L	4- 6
Michigan Tech.	L	5- 6 OT
*New Hampshire	W	8- 3
*New Hampshire	W	3- 2
Northern	L	3- 5
Michigan	L	3- 5
Northern	W	7- 5
*Denver	W	7- 3
*Denver	L	5- 7
North Dakota	L	1- 4
North Dakota	L	1- 7
Minnesota	T	6- 6 OT
Minnesota	W	4- 2
*Northeastern	L	5- 6
*Air Force	W	10- 4
*Lake Superior State	T	3- 3
Wisconsin	L	3- 8
Wisconsin	L	3- 4 OT
*Minnesota	L	1- 5
*Minnesota	W	6- 3
Denver	W	8- 5
Denver	L	6- 8
*Colorado College	W	6- 3
*Colorado College	W	8- 2
Minnesota	W	5- 3
Minnesota	L	3- 6
*North Dakota	L	3- 4 OT
*North Dakota	L	3-11
Colorado College	L	3- 7
Colorado College	L	6- 7 OT
*Wisconsin	L	9- 8
*Wisconsin	L	6- 8
†Denver	L	2- 5
†Denver	T	5- 5
*Jeno's Holiday Classic		
†WCHA Playoffs		

1982-83 (28-16-1) WCHA-4th		
Head Coach: Mike Sertich		
Captain: Jim Graven		
U.S. International	W	9- 3
U.S. International	T	3- 3
*Michigan Tech.	W	5- 2
*Michigan Tech.	W	4- 3
*Colorado College	W	4- 2
*Colorado College	W	5- 4
North Dakota	W	3- 2
North Dakota	W	4- 3 OT
*Minnesota	L	2- 4
*Minnesota	W	4- 1
Denver	W	6- 5 OT
Denver	L	2- 3
New Hampshire	W	5- 3
New Hampshire	W	7- 6
*Vermont	W	5- 3
*Vermont	W	7- 4
Wisconsin	W	5- 3
Wisconsin	L	2- 7
Michigan Tech.	W	6- 2
Michigan Tech.	L	1- 3
*Denver	L	5- 8
*Denver	W	7- 3
*Northern Arizona	W	7- 3
*Northern Arizona	W	4- 2
*Harvard	W	3- 2
Wisconsin	L	4- 7
Wisconsin	L	2- 6
*Minnesota	W	9- 3
*Minnesota	L	2- 5
*North Dakota	W	3- 0
*North Dakota	L	2- 3
Minnesota	L	3- 4
Minnesota	L	2- 3 OT
*Wisconsin	W	6- 3
*Wisconsin	L	1- 3
Colorado College	W	9- 3
Colorado College	W	4- 3
*North Dakota	W	5- 2
*North Dakota	L	2- 5
@Denver	W	7- 2
@Denver	W	6- 2
@Minnesota	L	2- 8
@Minnesota	W	4- 3
#Providence	L	3- 7
#Providence	L	2- 3
*Jeno's Holiday Classic		
@WCHA Playoffs		
#NCAA Championships (Quarterfinals)		

1983-84 (29-12-2) WCHA-1st

Head Coach: Mike Sertich

Captain: Tom Kurvers

*Colorado College	W	7-0
*Colorado College	W	6-3
North Dakota	L	4-6
North Dakota	L	2-7
*Minnesota	L	4-5 OT
*Minnesota	T	3-3 OT
*Boston Univ.	L	2-3 OT
*Boston Univ.	W	5-4
Denver	W	7-5
Denver	W	5-4 OT
*Michigan Tech	W	4-3 OT
*Michigan Tech	L	1-4
Wisconsin	W	6-5 OT
Wisconsin	W	4-1
Northern Michigan	W	4-1
Northern Michigan	W	6-5
*Denver	L	6-7 OT
*Denver	W	6-5
+Lake Superior	L	3-4
State	W	7-2
+ Ferris State	W	4-6
+ Boston College	L	4-6
Minnesota	W	7-2
Minnesota	W	5-4
*Wisconsin	W	7-1
*Wisconsin	W	6-4
Colorado College	W	6-3
Colorado College	W	8-2
*North Dakota	W	4-1
*North Dakota	T	4-4
*Colorado College	W	6-0
*Colorado College	W	7-3
Minnesota	L	2-4
Minnesota	W	6-3
*Wisconsin	W	4-2
*Wisconsin	W	6-1
*Wisconsin	W	6-3
*Wisconsin	W	9-0
*North Dakota	W	8-1
*North Dakota	L	4-5
#Clarkson	L	6-2
#Clarkson	L	3-6
*North Dakota	W	2-1 OT
#Bowling Green	L	4-5 OT
± UMD Holiday Classic		
± WCHA Playoffs		
#NCAA Championships (2nd Place)		

1984-85 (36-9-3) WCHA-1st

Head Coach: Mike Sertich

Captains: Jim Johnson, Tom Herzig

Colorado College	W	4-2
Colorado College	L	3-5
Michigan Tech	L	4-5 OT
Michigan Tech	L	4-5
*Alaska-Fairbanks	W	6-3
*Alaska-Fairbanks	W	9-5
Boston University	T	6-6 OT
Boston University	W	3-2
*Northern Arizona	W	11-1
*Northern Arizona	W	5-4
*Wisconsin	W	4-2
*Wisconsin	W	6-1
New Hampshire	W	6-2
New Hampshire	W	2-1 OT
*Maine	W	6-2
*Maine	W	7-2
North Dakota	W	4-3
North Dakota	L	5-6
Northeastern Uni.	W	7-6 OT
Northeastern Uni.	L	0-4
*Providence College	W	9-2
*Providence College	W	3-2
*Lowell	W	12-1
*Lowell	W	5-1
Boston College	W	8-4
Boston College	L	2-4
*Minnesota	T	6-6 OT
*Minnesota	W	8-6
*Northern Michigan	L	4-5
*Northern Michigan	W	2-1 OT
*Denver	W	7-2
Denver	W	5-0
Wisconsin	W	5-4
Wisconsin	W	8-1
*Michigan Tech	W	7-5
*Michigan Tech	W	4-3
Northern Michigan	W	7-6 OT
Northern Michigan	W	5-3
± *Michigan Tech	W	3-2
± *Michigan Tech	W	5-3
± *North Dakota	T	4-4
± *North Dakota	W	6-4
± *Minnesota	L	4-6
± *Minnesota	W	6-2
# *Harvard	W	4-2
# *Harvard	W	4-2
#RPI	L	5-6 OT
#Boston College	W	7-6
± WCHA Playoffs		
#NCAA Championships (Third Place)		

1985-86 (26-13-3) WCHA-4th

Head Coach: Mike Sertich

Captain: Mark Odnokon

* U.S. International	W	12-4
* U.S. International	W	8-7
North Dakota	W	5-4
North Dakota	W	4-1
* Minnesota	L	2-4
* Minnesota	W	5-2
Wisconsin	L	3-5
Wisconsin	L	3-4
* Alaska-Anchorage	W	8-6
* Alaska-Anchorage	W	6-1
* New Hampshire	W	5-3
* New Hampshire	W	4-3
* Maine	W	7-2
* Maine	W	6-3
Boston University	W	8-6
* Boston University	T	2-2
* Boston College	L	10-1
* Boston College	L	3-4
* Colorado College	W	5-4
* Colorado College	L	1-2
Lowell	W	5-3
Lowell	W	5-3
* Michigan Tech	W	7-2
* Michigan Tech	W	5-4
* North Dakota	W	4-3
* North Dakota	L	7-8
Providence College	W	6-3
Providence College	W	6-0
* Northeastern Uni.	W	4-1
* Northeastern Uni.	W	5-2
Denver	L	2-4
Denver	W	4-3
* Wisconsin	L	3-7
* Wisconsin	W	5-3
Minnesota	L	3-4
Minnesota	L	3-6
Northern Michigan	L	5-6
Northern Michigan	L	1-6
± Northern Michigan	T	4-4
± Northern Michigan	W	8-4
± Denver	L	2-8
± Denver	T	5-5
* Home Games		
± WCHA Playoffs		

Where the Bulldogs Will Stay in 1986-87

at MINNESOTA

Radisson University Hotel
615 Washington Ave. S.E.
Minneapolis, MN 55414
(612) 379-8888

at COLORADO COLLEGE

Beatty Hall
The Broadmoor World Arena
Colorado Springs, CO 80906
(303) 634-7711 Ext. 5169

at DENVER

Writers' Manor
1730 S. Colorado Blvd.
Denver, CO 80222
(303) 756-8877

at NEW HAMPSHIRE

Howard Johnson's Motor Lodge
Interstate Traffic Circle
Portsmouth, NH 03801
(603) 436-7600

at NORTHERN MICHIGAN

Holiday Inn
U.S. 41 W.
Marquette, MI 49855
(906) 225-1351

at WISCONSIN

Howard Johnson Executive Hotel
525 W. Johnson St.
Madison, WI 53703
(608) 251-5511

at BOSTON COLLEGE and BOSTON UNIVERSITY

Boston Marriott Copley Place
110 Huntington Avenue
Boston, MA 02116
(617) 236-5800

at NORTH DAKOTA

Westward Ho Motel
Grand Forks, ND 58201
(701) 775-5341

at MICHIGAN TECH

Best Western King's Inn
U.S. 41 Downtown
Houghton, MI 49931
(906) 482-5000

They Wore The Bulldog

University of Minnesota-Duluth Varsity Hockey Alumni



(1952-53 to present)

Player	(Hometown)	Year(s)
Abelson, Jerry	(Duluth, MN)	1956-60
Ahrens, Tom	(Duluth, MN)	1965-68
Akervick, Wally	(Duluth, MN)	1957-58
Albers, John	(West St. Paul, MN)	1974-76
Alexander, Bob	(Apple Valley, MN)	1985-
Ambrose, Dick	(St. Paul, MN)	1962-63
Anderson, Tommy	(Duluth, MN)	1952-53
Andersson, Anders	(Internat'l Falls, MN)	1981-82, 1983-84
Apostal, Robert	(Duluth, MN)	1952-54
Arvidson, Craig	(St. Paul, MN)	1973-77
Badiuk, Tom	(Fort Frances, ONT)	1968-69
Bailey, Mel	(Rosemount, MN)	1981-82
Baron, Mark	(Chisholm, MN)	1980-85
Bartholdi, Tom	(Duluth, MN)	1960-62
Beasley, Jay	(Taconite, MN)	1958-59, 1960-63
Beck, Ron	(International Falls, MN)	1967-69
Bell, Bobby	(Proctor, MN)	1963-67
Bellamy, Dick	(Duluth, MN)	1953-54
Birt, Jim	(Duluth, MN)	1952-54
Bockland, Jim	(Duluth, MN)	1955-56
Bolin, Jeff	(Edina, MN)	1980-81
Bostrom, Bob	(Duluth, MN)	1952-53
Bourdeau, Don	(Duluth, MN)	1954-56
Boutette, Pat	(Windsor, ONT)	1970-73
Boyat, Bob	(Duluth, MN)	1953-54
Bretto, Jim	(Hibbing, MN)	1957-59
Busniuk, Ron	(Fort William, ONT)	1967-70
Bymark, John	(Grand Rapids, MN)	1953-57
Bymark, Bob	(Grand Rapids, MN)	1959-61
Calengor, Jerry	(Hibbing, MN)	1952-55
Campe, Ernie	(Toronto, ONT)	1970-74
Carlson, Mike	(Two Harbors, MN)	1981-82
Carlston, Scott	(Bloomington, MN)	1978-82
Christensen, Matt	(Hoyt Lakes, MN)	1982-86
Christiansen, Keith	(Fort Frances, ONT)	1963-67
Christy, Doug	(Grand Rapids, MN)	1973-75
Cleveland, Al	(Grand Rapids, MN)	1977-81
Conroy, Tom	(New Brighton, MN)	1977-81
Cooper, Paul	(Duluth, MN)	1952-53
Corbin, Mitch	(Duluth, MN)	1976-79
Cortes, Mike	(Duluth, MN)	1985-
Cousineau, Bernard	(Fort Frances, ONT)	1957-60
Cowan, Dave	(Minneapolis, MN)	1983-
Cronkite, Larry	(International Falls, MN)	1956-60
Crookshank, George	(Courtenay, BC)	1979-83
Curran, Irving	(Duluth, MN)	1956-59
Dahl, Scott	(Duluth, MN)	1956-57, 1958-59
DeAngelis, Mike	(Kamloops, BC)	1984-
DeLuca, Tom	(Port Arthur, ONT)	1962-63
DeGrio, Gary	(Grand Rapids, MN)	1978-82
DeGrio, Robert	(Duluth, MN)	1958-59
DeLisle, Joe	(Shoreview, MN)	1984-
Devich, John	(Duluth, MN)	1966-67
Downing, Jon	(New Brighton, MN)	1981-85
Duffy, Ben	(Bismarck, ND)	1984-85
Durand, Brian	(Cloquet, MN)	1983-
Ekman, Dean	(Fridley, MN)	1979-83
Egan, Tim	(Mahtomedi, MN)	1975-76
Ellingson, Lyn	(Duluth, MN)	1969-73
Erickson, Ken	(Minneapolis, MN)	1958-59
Erickson, Ron	(Burnsville, MN)	1979-83
Fellner, Garry	(Regina, SASK)	1973-75
Fishback, Bruce	(White Bear Lake, MN)	1983-
Fishback, Dan	(White Bear Lake, MN)	1979-83
Fisher, Dick	(Duluth, MN)	1961-65
Flaman, Harvey	(Regina, SASK)	1955-58
Forbes, Ron	(William, ONT)	1967-69
Foster, Jack	(Warroad, MN)	1961-62
Francisco, Pat	(Duluth, MN)	1963-67
Francisco, Rick	(Duluth, MN)	1973-74
Froiland, Elroy	(Thief River Falls, MN)	1965-68
Fryer, Cameron	(Unity, SASK)	1969-72
Funke, Tom	(Duluth, MN)	1977-78
Gerarden, Dan	(Green Bay, WI)	1980-82
Giles, Curt	(Humboldt, SASK)	1975-79
Glynn, Brian	(Tonawanda, NY)	1982-83
Gosselin, Guy	(Rochester, MN)	1982-
Gotelaere, Mike	(Superior, WI)	1981-82
Graiziger, Pat	(Roseville, MN)	1976-78
Graven, Jim	(Wayzata, MN)	1979-83
Grillo, Bill	(Hibbing, MN)	1980-84
Grosse, Mel	(Saskatoon, SASK)	1969-71
Gulbranson, Kerry	(Gilbert, MN)	1975-76

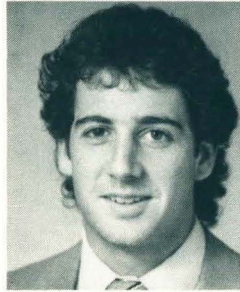
Gustafson, Richard (Fort Frances, ONT) 1956-58
 Guyer, Pat (Taconite, MN) 1981-83

Haakstad, Carmen (Grande Prairie, ALTA) . . . 1974-78
 Haakstad, Lyman (Grande Prairie, ALTA) 1970-74
 Haines, Dave (Fort Frances, ONT) 1968-70
 Halbrehder, Bill (Superior, WI) 1961-65
 Haley, Mike (Minneapolis, MN) 1957-61
 Hall, Jim (Thief River Falls, MN) 1957-58
 Hanson, Tom (Hibbing, MN) 1985-
 Harker, Gary (Duluth, MN) 1962-63
 Harney, Tim (Duluth, MN) 1952-53
 Harrington, John (Virginia, MN) 1975-79
 Hayko, Rick (Regina, SASK) 1985-
 Heaslip, Mark (Duluth, MN) 1971-73
 Hedlund, Don (Roseau, MN) 1976-80
 Hegg, Peter (International Falls, MN) 1967-68
 Heinz, Rick (Essex, Ontario) 1974-78
 Hendricks, Tom (Bloomington, MN) 1980-81
 Hendrickson, Keith (Virginia, MN) 1975-80
 Herzig, Tom (International Falls, MN) 1981-85
 High, Harold (Duluth, MN) 1952-55
 Hill, Bob (Duluth, MN) 1962-66
 Hill, Ronald (Oak Park, IL) 1963-66
 Hoene, Phil (Duluth, MN) 1968-71
 Hogue, LeRoy (Heron Bay, ONT) 1960-61
 Holappa, Frank (Duluth, MN) 1953-56
 Horn, Mike (Duluth, MN) 1954-57
 Hubick, Greg (Strausburg, SASK) 1970-72
 Hunt, Roger (Toronto, ONT) 1971-73
 Hull, Brett (West Vancouver, BC) 1984-86

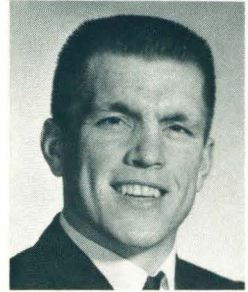
Illikainen, Darin (Hermantown, MN) 1984-

Jacques, Mike (Duluth, MN) 1976-78
 Janostin, Pat (Hafford, SASK) 1985-
 Johnson, Bob (Duluth, MN) 1959-60
 Johnson, Brad (Silver Bay, MN) 1983-84
 Johnson, Brian (Silver Bay, MN) 1983-
 Johnson, Davey (Kelly Lake, MN) 1976-81
 Johnson, Duane (Duluth, MN) 1953-55
 Johnson, Frank (Duluth, MN) 1952-56
 Johnson, Jeff (Minneapolis, MN) 1975-79
 Johnson, Jim (New Hope, MN) 1981-85
 Johnson, Ron (Duluth, MN) 1959-63
 Jones, Monty (Craik, SASK) 1973-77
 Jones, Rodney (Craik, SASK) 1973-76
 Jordet, Bruce (Duluth, MN) 1968-71
 Judkins, Jay (Anoka, MN) 1973-74
 Judnick, Don (Eveleth, MN) 1956-60
 Joyce, Bob (Winnipeg, MANIT) 1974-75
 Juneo, Robert (Duluth, MN) 1952-53

Keogan, Murray (Biggar, SASK) 1969-71
 Keseley, Terry (Silver Bay, MN) 1977-79
 Kiryluik, Merv (Dauphin, MANIT) 1970-74
 Kleisinger, Jerry (Regina, SASK) 1955-58
 Knapp, Jim (International Falls, MN) 1972-76
 Knauff, Chris (Bloomington, MN) 1977-79



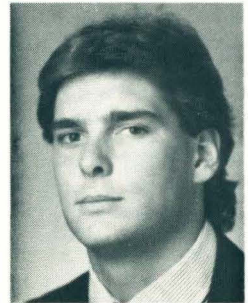
Mark Baron



Dick Fisher



Carmen Haakstad



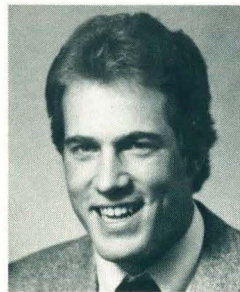
Tom Kurvers



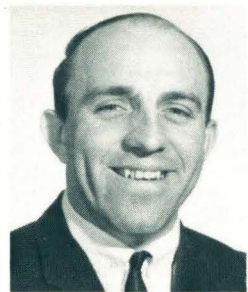
Bill Lenardon



Dan Mahle



Bob Mason



Bill McGann

Koidahl, Scott (Duluth, MN)	1972-75	Nelson, Brian (Willmar, MN)	1984-
Kolar, Joe (Taconite, MN)	1952-53	Nelson, Jim (Duluth, MN)	1955-56
Kosti, Rick (Limerick, SASK)	1983-85	Nelson, Joe (St. Paul, MN)	1973-76
Krakiwski, Sean (Calgary, ALBT)	1985-86	Nemanick, Tom (Eveleth, MN)	1972-75
Krawchuk, Larry (William, ONT)	1967-69	Ness, Chuck (Duluth, MN)	1969-73
Kreidler, Jack (Mystery, MN)	1966-68	Newell, Richard (Winnipeg, MANIT)	1966-69
Krensing, Mike (Babbitt, MN)	1979-83	Newton, Mike (Grand Rapids, MN)	1972-76
Krysiak, Jim (Duluth, MN)	1952-53	Noreen, Dale (Duluth, MN)	1960-62
Kulyk, Glenn (Prince Albert, SASK)	1976-80	Nosan, Doug (Hibbing, MN)	1968-69
Kurvers, Tom (Bloomington, MN)	1980-84		
		O'Brien, Edward (Calgary, ALTA)	1972-76
Lakso, Bob (Aurora, MN)	1980-84	Odnokon, Mark (Prince Albert, SASK)	1982-86
Langevin, David (St. Paul, MN)	1972-76	O'Handley, Mike (Duluth, MN)	1958-60
Larson, Ken (Duluth, MN)	1971-72	Oleksuk, Bill (Thunder Bay, ONT)	1978-82
Larson, Robert (Duluth, MN)	1968-69	Olson, Bruce (Salol, MN)	1975-79
Lawson, Tim (Taconite, MN)	1974-75	Olson, Gerald (Duluth, MN)	1956-59
LeBlanc, David (William, ONT)	1965-68	Otis, Mike	1955-56
Ledingham, Walt (Weyburn, SASK)	1969-72	Otis, Steve (Virginia, MN)	1976-78
Lempe, Dan (Grand Rapids, MN)	1976-80		
Lenardon, Bill (William, ONT)	1959-63	Pallin, Rob (Chisholm, MN)	1985-
Lence, Mike (St. Paul Park, MN)	1970-74	Palmer, Stan (Bloomington, MN)	1976-80
LeTourneau, Doug (Rochester, MN)	1979-81	Panger, Ronald	1963-64
Lewis, Herbert (Minneapolis, MN)	1963-64	Paton, James (Fort William, ONT)	1954-55
Lillo, Tim (Roseau, MN)	1969-70	Pavelich, Dave (Eveleth, MN)	1981-82
Little, Robby (Edina, MN)	1974-76	Pavelich, Mark (Eveleth, MN)	1976-79
Lodahl, John (Oakdale, MN)	1979-81	Perkl, Bill (Minnetonka, MN)	1977-81
Lund, Robert (Warroad, MN)	1959-60, 1962-65	Peterson, Al (Duluth, MN)	1953-54, 1957-60
Lundeen, Steve (Fergus Falls, MN)	1980-81	Plankers, Jim (Cloquet, MN)	1983-85
		Powell, Ernie (Craik, SASK)	1973-77
		Powell, Tommy (Duluth, MN)	1958-59
		Pretlac, Ron (Fort William, ONT)	1956-60
Maciver, Norm (Thunder Bay, ONT)	1982-86	Ramsland, Max (Duluth, MN)	1958-59, 1961-62
Madson, Tom (Grand Rapids, MN)	1977-81	Regan, Pat (St. Paul, MN)	1976-80
Maertz, Dave (Duluth, MN)	1965-66	Resch, Glenn (Regina, SASK)	1968-71
Maertz, Dick (Duluth, MN)	1963-67	Rippin, William (Fort William, ONT)	1960-62
Maertz, Jim (Duluth, MN)	1968-71	Rogers, Bruce (French Butte, SASK)	1968-69
Mahle, Dan (International Falls, MN)	1967-70	Rogers, Owen (French Butte, SASK)	1962-66
Mason, Bill (International Falls, MN)	1981-84	Romano, Ralph (Duluth, MN)	1954-56
Mason, Bob (International Falls, MN)	1981-83	Rostie, Duane (International Falls, MN)	1960-62
May, Danny (Minneapolis, MN)	1981-85	Roth, Erin (Grand Rapids, MN)	1976-77
McCormick, John (Ft. William, ONT)	1960-62	Rothstein, John (Grand Rapids, MN)	1975-79
McCulloch, Barry (Thunder Bay, ONT)	1977-79	Roy, David (Toronto, ONT)	1969-72
McDonald, David (Winnipeg, MANIT)	1977-79		
McDonald, Gord (Windsor, ONT)	1971-75	Salko, Ed (Gilbert, MN)	1952-53
McGann, Bill (Duluth, MN)	1960-64	Salminen, Bill (Mahtomedi, MN)	1968-69
McGiffert, Bill (Duluth, MN)	1961-65	Santori, John (Superior, WI)	1979-83
McIvor, Kirk (Eston, SASK)	1974-76	Savolainen, Bill (Duluth, MN)	1961-63
McKay, John (Duluth, MN)	1965-68	Schwartz, Elmer (Regina, SASK)	1955-58
McLeod, Bruce (Fort Frances, ONT)	1966-69	Scott, Ronald (Duluth, MN)	1952-55
Melynychuk, Walter (Fort Frances, ONT)	1958-59	Sertich, Mike (Virginia, MN)	1966-69
Milani, Tom (Thunder Bay, ONT)	1972-76	Shercliffe, Terry (Regina, SASK)	1962-65
Mitchell, John (Duluth, MN)	1952-55	Shold, Terry (International Falls, MN)	1985-
Mithrush, Mike (Ft. William, ONT)	1960-63	Sindelar, Roman (Prague, Czechoslovakia)	1984-86
Moen, Billy (Proctor, MN)	1976-77	Sisto, Alex (Duluth, MN)	1953-57
Moore, Gregg (Edina, MN)	1979-83	Sjoberg, Ronald (Duluth, MN)	1952-54
Moore, Skeeter (Duluth, MN)	1983-	Smalley, Kevin (Duluth, MN)	1981-84
Mrazek, Jerome (Prince Albert, SASK)	1970-74	Smith, Robert (Duluth, MN)	1956-60
Mrozik, Tom (Duluth, MN)	1965-68		
Murphy, Gary (Bovey, MN)	1966-68		
Murray, Rob (Duluth, MN)	1979-83		

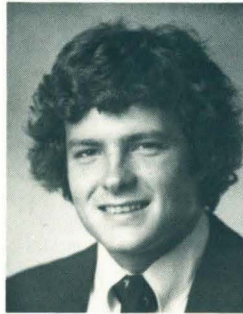
Smith, Wayne (Gloucester, ONT) 1985-
 Sprenger, Jim (Cloquet, MN) 1983-
 Spoden, Doug (West St. Paul, MN) 1974-75
 Standbrook, Grant (Winnipeg, MANIT) 1959-61
 Standohor, Paul (Duluth, MN) 1958-60
 Steppes, Dave (Duluth, MN) 1962-65
 Stevens, Mike (Winnipeg, MANIT) 1969-71
 Stratton, Doug (Sault Ste. Marie, ONT) 1973-74
 Sutton, Edward (Duluth, MN) 1960-62
 Sutton, Lee (St. Paul, MN) 1965-66

Telipasa, John (Toronto, ONT) 1972-74
 Thompson, Dick (Baudette, MN) 1965-68
 Thompson, Mike (Two Harbors, MN) 1960-61
 Thompson, Roger (Duluth, MN) 1958-59
 Tok, Mike (Bovey, MN) 1962-66
 Tok, Bob (Bovey, MN) 1967-69
 Toninato, Jim (Bemidji, MN) 1982-86
 Toomey, Sean (St. Paul, MN) 1983-
 Tousignant, Dan (Bloomington, MN) 1985-
 Trachsel, Larry (Duluth, MN) 1970-71
 Trachsel, Pokey (Duluth, MN) 1969-73
 Turko, Ken (Thunder Bay, Ontario) 1971-75

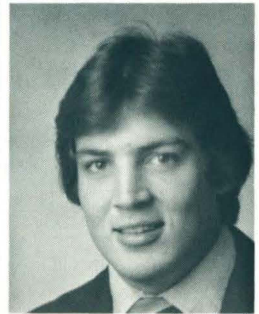
Udeson, Jerry (Duluth, MN) 1960-61, 1962-63

Valesano, Mike (Hoyt Lakes, MN) 1981-83
 Van Den Heuvel, Larry (Silver Bay, MN) 1969-70

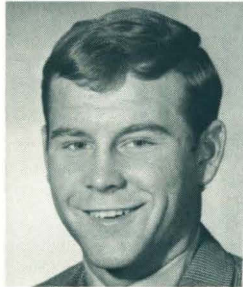
Wallene, Howard (Hibbing, MN) 1953-56
 Watson, Bill (Powerview, MANIT) 1982-85
 Weaver, Don (Peace River, ALBA) 1957-59
 Weum, Ronald (International Falls, MN) 1968-70
 Whalen, Charles (Edina, MN) 1968-71
 Wheele, Ron (Port Arthur, ONT) 1967-70
 Wherley, Jerry (International Falls, MN) 1959-63
 Wilkie, Donald (Regina, SASK) 1955-58
 Williams, Jack (Duluth, MN) 1958-60, 1961-63
 Witherill, Jerry (Grand Rapids, MN) 1955-56
 Wojcichowsky, Orest (Yel. Creek, SASK) 1957-60
 Wolfe, Benjie (Duluth, MN) 1966-69
 Wright, Arliss (Regina, SASK) 1955-56, 1957-58
 Wright, Larry (Regina, SASK) 1969-70
 Young, Alan (Toronto, ONT) 1969-72
 Young, Robert (Regina, SASK) 1965-67
 Youngmans, Bob (Minneapolis, MN) 1970-71
 Yurkovich, George (Eveleth, MN) 1957-59
 Zilkie, Marvin (Winnipeg, MANIT) 1961-65



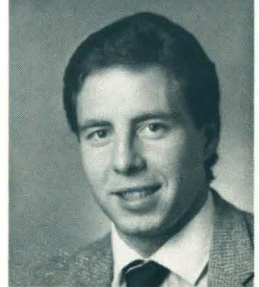
Gregg Moore



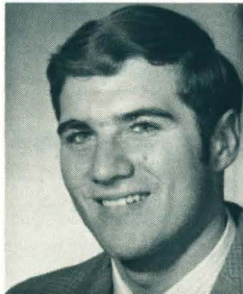
Joe Nelson



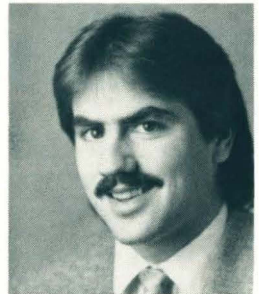
Chuck Ness



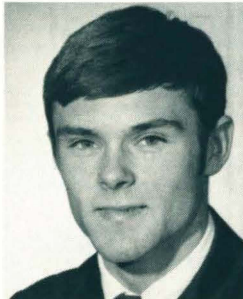
Mark Odnokon



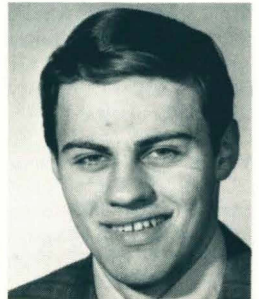
Mike Stevens



Bill Watson



Chuck Whalen

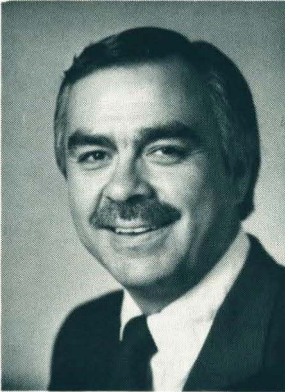


Larry Wright



BRUCE McLEOD

Director of Athletics



The University of Minnesota-Duluth offers one of the most balanced as well as competitive athletic programs for schools of its size in the country. In 1985-86 alone, for example, Bulldog teams captured conference titles in football, men's basketball, men's tennis, women's volleyball, and men's golf. The men's basketball, men's tennis and wrestling contingents all advanced to the NAIA national championships while individuals from the Minnesota-Duluth men's and women's track and field and men's golf teams also earned berths in NCAA Division II national events.

Overseeing the Bulldogs' 15 varsity sports (nine men and six women) program is Bruce McLeod, who is in his third full year as the Director of Intercollegiate Athletics. McLeod, 39, succeeded the late Ralph Romano in December 1983 after working his way through virtually the entire

Minnesota-Duluth Athletic Department. He served, at one time or another, as the sports information director, the business manager, and assistant athletic director (a position he held from 1977-1983).

A native of Fort Frances, Ontario, McLeod first made his mark at Minnesota-Duluth as a standout left wing on the Bulldog hockey team. During his three-year collegiate ice career (1966-69), McLeod racked up 81 points in 77 games and was the Bulldogs' captain as a senior during the 1968-69 season.

Presently a member of the NCAA Division I Ice Hockey Committee, McLeod is a 1969 graduate of Minnesota-Duluth. He and his wife, Monty, have two daughters, Leah (a sophomore at Minnesota-Duluth) and Shannon.

BULLDOG ATHLETIC DEPARTMENT STAFF

BETTY FLEISSNER, Ass't Trainer	726-8133
SHEILA FRYBERGER, Secretary	726-8168
LYN GREENWOOD, Secretary	726-8168
BILL HALLER, Men's Athletic Coordinator	726-8168
SCOTT HANNA, Ass't Football and Baseball Coach	726-7967
GARY HOLQUIST, Ass't Basketball Coach	726-8189
MARY JO JOHNSON, Secretary	726-8168
DIANA KLOSOWSKI, Rasmussen Fund Secretary	726-8598
JIM KNAPP, Ass't Hockey Coach	726-8195
GLENN KULYK, Ass't Hockey Coach	726-6119
NEIL LADSTEN, Wrestling and Ass't Football Coach	726-8534
LINDA LARSON, Women's Athletic Coordinator	726-7230
JIM MALOSKY, Football Coach	726-7121
SUE MacDONALD, Business Manager	726-8721
BRUCE McLEOD, Athletic Director	726-8168
RICK MENZ, Equipment Manager	726-7576
KATHY NELSON, Ticket Office	726-8595
BOB NYGAARD, Sports Information Director	726-8191
RICHARD OJAKANGAS, Faculty Representative	726-7923
DALE RACE, Men's Basketball Coach	726-8189
VINCE REPESH, Ass't Football Coach	726-8168
DON ROACH, Men's Tennis Coach and Head Trainer	726-8717
ELEANOR RYNDA, Cross Country and Track Coach	726-8192
MIKE SERTICH, Hockey Coach	726-8579
KAREN STROMME, Women's Basketball Coach	726-7143
MICKY TIERNEY, Volleyball Coach	726-7968

The University of Minnesota is an equal opportunity educator and employer.



They Really Were Masters

It was an event which brought some of the Bulldogs of yesteryear and other Duluth ice hockey greats together to exchange old war stories and skate for a deserving cause. And, when it was all over, the Masters Game had produced plenty of memorable moments, not to mention plenty of smiles such as those displayed above by the 1985-86 Bulldog scoring champion Brett Hull and his legendary father Bobby. In all, 40 players from a variety of eras took part in the Masters Game, which was staged on July 2, 1986, at the Duluth Arena, including nine of Minnesota-Duluth's 12 past All-Americans, former U.S. Olympian Phil Verchota, and Tommy Williams, perhaps the first notable American to skate in the National Hockey League. Proceeds from the Masters contest, which drew over 5,200 fans, went to a drug awareness program for the Duluth high schools and Minnesota-Duluth.



1986-87 BULLDOG SCHEDULE

DATE	OPPONENT	TIME (CST)
† Oct. 10-11	North Dakota *	8:05/7:35
Oct. 17-18	Minnesota *	7:35/2:05
† Oct. 24-25	Michigan Tech *	8:05/7:35
Oct. 31-Nov. 1	Colorado College *	8:35
Nov. 7-8	Denver *	8:35
† Nov. 14-15	Wisconsin *	8:05/7:35
† Nov. 21-22	Northern Michigan *	8:05/7:35
Dec. 6	New Hampshire #	6:30
† Dec. 12-13	Harvard University	8:05/7:35
Dec. 19-20	Northern Michigan *	7:05/6:35
† Dec. 27	Providence College #	7:35
† Dec. 28	Northeastern University #	7:35
† Jan. 2	Lowell #	8:05
† Jan. 3	Maine #	7:35
Jan. 9-10	Wisconsin *	7:35
Jan. 16	Boston College #	6:30
Jan. 17	Boston University #	6:30
† Jan. 23-24	Denver*	8:05/7:35
† Jan. 30-31	Colorado College *	8:05/7:35
Feb. 6-7	North Dakota *	7:35
† Feb. 13-14	Minnesota *	8:05/7:35
Feb. 20-21	Michigan Tech *	7:05/6:35
Feb. 27-28	WCHA Playoffs (Quarterfinals)	TBA
March 6-7	WCHA Playoffs (Semifinals)	TBA
March 13-14	WCHA Playoffs (Finals)	TBA
March 20-22	NCAA Playoffs (Quarterfinals)	TBA
March 26-28	NCAA Championships	TBA

* Western Collegiate Hockey Association Game

WCHA/Hockey East Game

† Home Games in Green