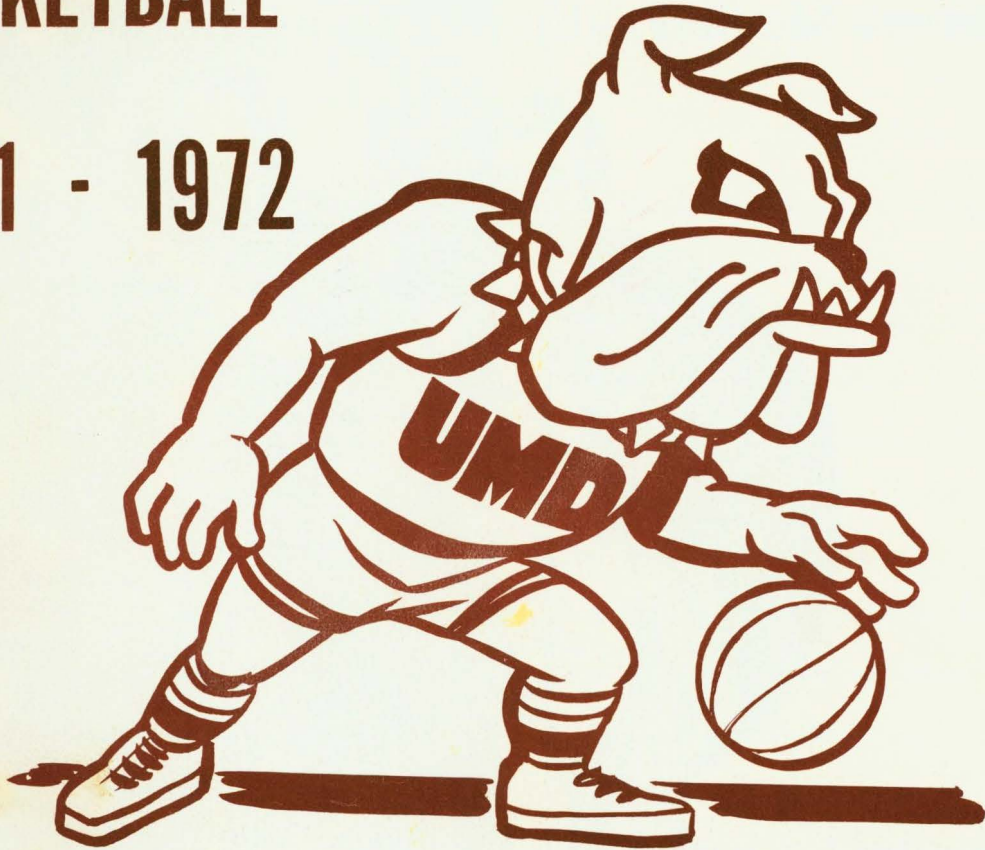


University of Minnesota , Duluth

BASKETBALL

1971 - 1972

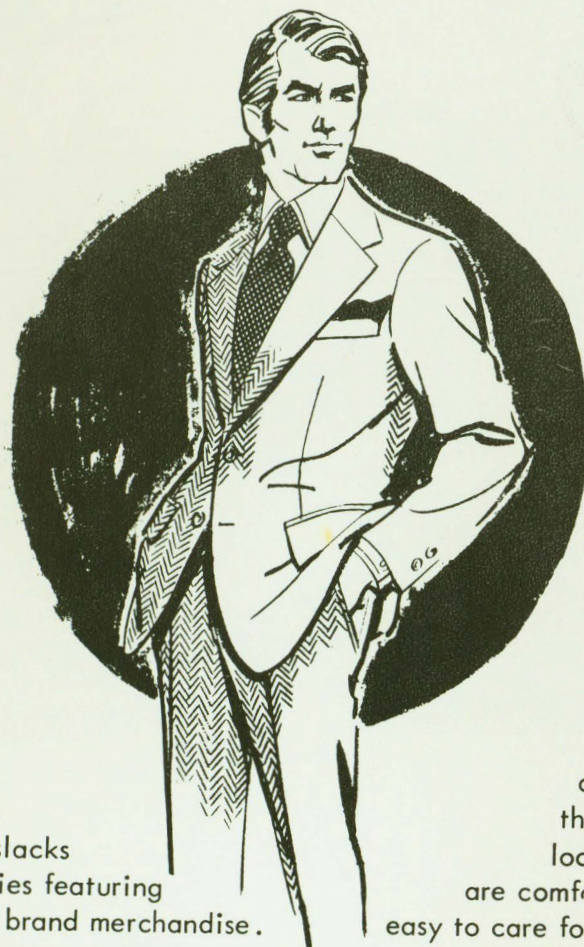


35¢

*Official Program*

Be The Center of Attention  
Choose Your Wardrobe at  
McGregor & Soderstrom's

Where Men's Fashion is Happening!



Complete selection of Men's suits' Sportcoats, slacks and accessories featuring famous name brand merchandise.

Sport and casual wear that not only look good but are comfortable and easy to care for.



219 W. Superior St.  
DULUTH, MINN.

722-1775

OPEN 9-9 Mon.  
9-5:15 Tues.-Sat.



# University of Minnesota, Duluth

## Table of Contents

- The University .....4-5
- The Records.....7-9
- Coaching Staff.....10-11
- Basketball Schedule.....13
- Athletic Department.....14-15
- UMD Roster.....17
- Basketball Statistics.....19
- UMD Numerical Lineup.....20
- Opponent's Numerical Lineup.....21
- North Star Scholarship.....22
- Opponent's Roster.....24
- Introducing the Bulldogs.....27-37
- MIAC Composite Schedule .....38

PUBLISHED BY THE UNIVERSITY OF MINNESOTA,  
DULUTH ATHLETIC DEPARTMENT

Ralph Romano ..... Athletic Director

Bruce McLeod ..... Athletic Business Manager

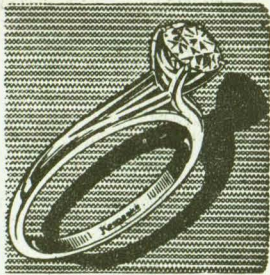
Ken Moran ..... Photographer

Price 35¢ (Est. 34¢, State Tax 1¢)

## Security Jewelers

307 West Superior Street

727-1301



featuring

KEEPSAKE diamond rings

Largest Selection of  
Trophies in the City

— Free Engraving —

We belong to the  
Student Discount Program

## Al & Lou's Conoco Service

U-HAUL TRAILER RENTALS

AAA—EMERGENCY SERVICE

1624 Woodland Avenue

Phone: 724-0102

ALWAYS SOMETHING NEW:  
New Styles . . . New Fabrics  
New Shapes . . .

The most versatile fashions you can own,  
whether your career is college, school, home, of-  
fice or travel!

Junior Sizes 3 to 15 — Misses' Sizes 8 to 20

## Westman's Apparel

Kenwood Shopping Center  
Duluth, Minnesota

Shop Open Friday Nights Till 9:00 P. M.  
Daily 9:00 A.M. Till 5:30 P.M.



### SOCK IT AWAY

Take Home More For A  
Whole Lot Less.



### Join The Red Owl Price Rebellion

Now 5 locations in the Duluth-Superior area to  
serve you better.

1316 Arrowhead Rd.

125 W. First St.

5536 Grand Ave.

5928 E. Superior St.

202 Belknap St. - Superior, Wisconsin

GOOD LUCK BULLDOGS

## THE UNIVERSITY

The University of Minnesota, Duluth will  
celebrate its 25th anniversary on July 1, 1972.

The event will mark a quarter century of  
growth for a community campus which ranks  
among the most unique in the nation.

Its students and faculty have distinguished  
themselves throughout the state, nation and  
world. The campus, itself, has become the hub of  
much of the educational and cultural activity of  
the city and region.



It was on July 1, 1947 that UMD, following  
approval by the Minnesota Legislature, became a  
campus of the University of Minnesota. Its pre-  
decessors at the old campus a half mile away were  
Duluth State Teachers College (1921-1947) and  
Duluth State Normal School (1902-1921).

UMD has been a campus "on the move" since  
the first spade of earth was dug in the new, 160  
acre site overlooking Lake Superior. Over the  
years, the land had been occupied by wildlife and  
Indian families, and later children chasing rab-  
bits, flying kites or picking strawberries.

The Science Building, first structure on cam-  
pus, was opened to its first classes in the fall of  
1950. Since then, 15 major buildings have been  
completed bringing the total campus worth to  
\$40 million.

There were 1,432 students enrolled at UMD  
in 1947. The current enrollment of almost 6,000  
represents an increase of more than 300 per cent  
for a campus which originally was planned for  
only 3,500 students! Another 4,000 students, in-  
cluding many adults from the city and region, at-  
tend two five-week terms of Summer Session and  
General Extension Division evening classes.

In 1947, only two degrees and a two year  
diploma were offered. Now UMD students can  
choose from the Associate in Arts (two years),  
Bachelor of Arts, Bachelor of Science, Bachelor  
of Business Administration, Bachelor of Account-  
ing, seven Master of Arts and six Master of Sci-  
ence degrees, plus a specialist program in  
school administration.

UMD students can select from 1,400 courses  
with 55 majors in 36 fields of study, plus two,  
three and four year preparatory programs in 19  
pre-professional fields and Air Force ROTC.

In addition to the regular academic programs,  
a number of specialized services now are offered

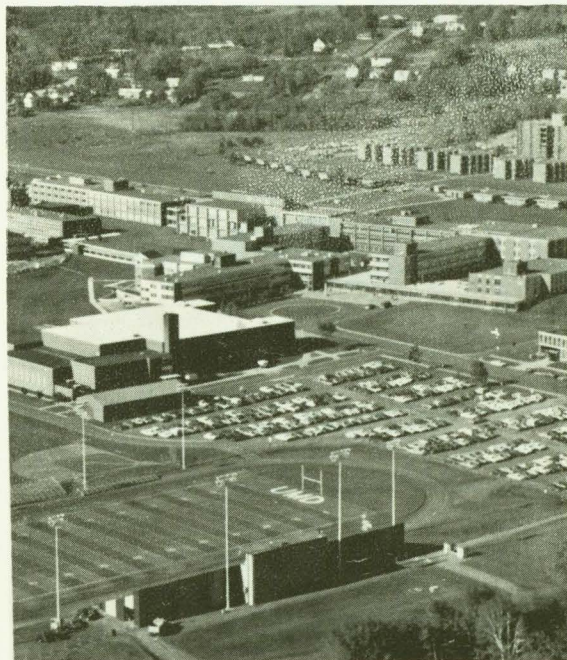
by UMD departments. Included are the Reading Skills Clinic, the Student Tutorial Project, Speech and Hearing Clinic, Office of Educational Media, the Computer Center, and business and social research offices.

Symbolic of coming academic growth are the three new professional programs to be initiated in the fall of 1972. That is when the first students will be enrolled in a two-year UMD Medical School, a UMD Graduate School of Social Work, and a UMD Dental Hygiene Program.

The UMD Campus Assembly made up of both faculty and students last year became the major legislative body on campus, the first time students directly participated with voting powers in setting policy.

UMD's growth has had a marked effect on the city of Duluth and the region. More than 250 public events on campus each year bring thousands of visitors to the Tweed Museum of Art, the Alworth Planetarium, the University Artists Series, varsity games, lectures, band, orchestra and choral concerts, theatre productions, workshops and seminars.

UMD faculty actively participate in community programs such as the Model Cities project, planning and construction of the Duluth Arena-Auditorium, business and medical research, and in projects of scores of social and civic organizations.



"With the continued support of the community, Minnesota Legislature and the University Regents, UMD's next 25 years promise to be marked by growth we cannot yet imagine," Provost Raymond W. Darland declares.

"I believe UMD has fulfilled the early expectations of the community and legislative leaders who worked so hard for so long to give it University status. I am confident that UMD's faculty, students and administrators will join in planning and executing a bold program of higher education which will win new plaudits for UMD."

COMPLIMENTS . . .

## ECONOMY MOTORS

NORTH COUNTRY DISTRIBUTOR OF  
GMC AND PETERBILT TRUCKS

3102 West 1st St.

628-1044

Compliments of . . .

## STEWART'S WHEEL GOODS STORE



HOCKEY EQUIPMENT

CCM—Cooper-Weeks—Northland—Koho  
Louisville—Hyde—Bauer—Riedell  
Professional Skate Sharpening

1502 EAST SUPERIOR ST.

724-5101



SUPPLY  
COMPANY

## GO— BULLDOGS!

Tom Nelson  
Tom Gandsey  
Al Lindblad  
Don Ehle  
Roy Holt  
Jim Ellingsen  
Gordy Mehling  
Bernie Selin  
Terry Kirsch  
Jim Gustafson

Everything in Home Appliances  
Television and Stereo

- Westinghouse
- Frigidaire
- Maytag
- Hoover
- RCA

## DAUGHERTY

516 EAST FOURTH STREET  
DULUTH, MINNESOTA 55805

Phone: Hardware—722-3925

Appliances—722-3971

**WIN WITH  
BULLDOGS**

**WIN WITH  
SHELL**

**LOWELL'S**

60th AVE. E.  
& SUPERIOR ST.

**WALLY'S**

24-HOUR SERVICE  
12th AVE. E. & SUP. ST.



**BOB'S**

27th AVE. W.  
& MICH. ST.

**FRED'S**

WEST DULUTH  
57th and GRAND

DULUTH ————— SUPERIOR

YOUR LOCALLY OWNED OIL CO.

**SULLIVAN OIL CO.**

# HUNGRY? COME ON IN!

ENJOY THE TASTIEST DRIVE-IN FOOD YOU CAN BUY –  
ANYWHERE . . . AT ANY PRICE!

Try Our Famous Char's

- ONION RINGS
- CHUCK WAGONS
- CHEESE BURGERS
- BIG BOOMER BURGER
- FISHWICH
- CALIFORNIAS

## LONDON INN – 1623 LONDON ROAD

## PANTOUR TRAVEL SERVICE

SINCE 1946

Complete Travel Arrangements Anywhere in  
the World made for you by our experienced  
Travel Consultants without service charge.

**American Express  
Representative**

**722-2891**

314 W. Superior St.  
Duluth, Minnesota

AIR . SHIP . TOURS . CRUISES . RAIL  
BUS . HOTELS . GROUPS

## Strommen and Associates



Dave Lindstrom



John Yount



Roger Hanson

**Consultants**

**CENTRAL LIFE ASSURANCE CO.**

"ONE OF THE BEST"

Three Local Sportsmen in Business  
To Serve You!

- Life Insurance
- Pension and Profit Sharing
- Disability Insurance
- Business Insurance

**928 E 4th St**

**724-8831**

# THE RECORDS

## MOST POINTS SCORED, ALL GAMES

Mike Patterson, 642, (1964), 544, (1965)  
 Dave Baker, 459, (1961)  
 Rudy Monson, 456, (1950)  
 Bill Mattson, 442, (1960)  
 Kerry LaPine, 462, (1971)

## MOST POINTS SCORED, CONFERENCE

Mike Patterson, 407, (1964)  
 Chuck Hiti, 306, (1953)

## HIGHEST PER GAME AVERAGE, ALL GAMES

Mike Patterson, 23.68 (1964)  
 Rudy Monson, 20.45 (1950)

## HIGHEST PER GAME AVERAGE, CONFERENCE

Patterson, 25.44 (1964)  
 Jeff Ellenson, 20.50 (1967-68)  
 Monson, 19.17 (1950) led MIAC

## MOST POINTS SINGLE GAME, NON-CONFERENCE

Mark Vukelich, 34 against Eau Claire State (1953)  
 Monson, 33 against St. Cloud Teachers College (1950)

## MOST POINTS, SINGLE GAME, CONFERENCE

Patterson, 41 (1964)  
 Kerry LaPine 35.34 (1971)  
 Harry Oden, 31 (1963)  
 Craig Jensen 31 (1971)

## MOST GAMES, 20 OR MORE POINTS IN SINGLE GAME

Patterson, 22 (1964)  
 Hiti, 12 (1954)

## LEADING SCORER BY SEASON

1952-53	Chuck Hiti, F	23	422	18.3
1953-54	Chuck Hiti, F	25	433	17.2
1954-55	Tom Richardson, G	25	364	14.6
1955-56	Doug Rosi, F	21	342	16.3
1956-57	Jack McKillop, C	22	393	17.8
1957-58	Dave Baker, F	25	441	17.6
1958-59	Bill Mattson, C	25	394	15.7
1959-60	Mattson	22	440	20.0
1960-61	Baker	24	398	16.6
1961-62	Mattson	24	398	16.6
1962-63	Mike Patterson, C	26	427	16.4
1963-64	Patterson	27	642	23.7
1964-65	Patterson	28	554	19.7
1965-66	Bob Carey, F	23	331	14.3
1966-67	Carey	26	403	15.5
1967-68	Jeff Ellenson, C	21	374	17.8
1968-69	Mike Josephson, F	21	243	11.6
1969-70	Dave Lorenzen, C	26	413	15.9
1970-71	Kerry LaPine	26	462	17.8

## TEAM RECORDS

Most Points, Season, All Games	2,072 (1964)
Most Points, Season, Conference	1,277 (1958)
Highest Average, Season, All Games	82.67 (1957)
Highest Average, Season, Conference	79.81 (1958)
Most Field Goals, Season, All Games	844 (1964)
Most Field Goals, Season, Conference	493 (1959)
Most Free Throws, Season, All Games	620 (1955)
Most Free Throws, Season, Conference	406 (1954)
Most Points Scored, Single Game: 114 Against Bemidji State	(1957)
Most Games Won in Succession, All Games	11 (1959)
Most Games Won in Succession, Conference	14 (1959)
Most Games Lost in Succession, All Games	13 (1969)
Most Games Lost in Succession, Conference	13 (1969)
Most Games Won, Season, All Games	22 (1959)
Most Games Won, Season, Conference	15 (1958 & 1959)
Most Games Lost, Season, All Games	19 (1969)
Most Games Lost, Season, Conference	15 (1969)
Least Games Lost, Season, All Games	3 (1958)
Least Games Lost, Season, Conference	1 (1958)
Most Points Allowed, Season, All Games	1,957 (1955)
Most Points Allowed, Season, Conference	1,257 (1969)

509 EAST SUPERIOR STREET

NIGHTLY PIANO BAR ENTERTAINMENT

World Renowned Murphy's Lounge

AFTER THE GAME MEET YOUR FRIENDS AT



**TOP ALL-TIME SCORERS**

**1970-71 FINAL MIAC STANDINGS**

Mike Patterson, C .....	1962-64	1808
Dave Baker, F .....	1957-61	1694
Bill Mattson, C .....	1958-62	1616
Roger Hanson, G .....	1961-64	1407
Bob Monson, G .....	1955-59	1335
Bob Carey, F .....	1964-68	1200
Bruce Acklund, G .....	1962-66	1062
Jack McKillop, C .....	1953-57	1009
Tom Adams, F .....	1958-62	968
Rudy Monson, C .....	1948-50	960
Kerry LaPine, C .....	1967-71	1056

Team	Conference	Overall
St. Thomas	15-1	24-5
Augsburg	11-5	19-7
St. John's	10-6	13-12
Macalester	8-9	12-13
Duluth	8-8	10-16
St. Mary's	7-9	11-15
Gustavus	6-10	7-15
Concordia	5-11	7-18
Hamline	2-14	4-21

**MIAC CHAMPIONS**

1922-23	St. Thomas	1947-48	Hamline
1923-24	St. Thomas	1948-49	Hamline
1924-25	Gustavus	* 1949-50	Hamline
1925-26	Gustavus	1950-51	Hamline
1926-27	Augsburg	1951-52	Hamline
1927-28	Gustavus	1952-53	Hamline
1928-29	St. Olaf	1953-54	Gustavus
1929-30	St. Olaf	1954-55	Gustavus
1930-31	Hamline	1955-56	Gustavus
1931-32	Hamline	1956-57	Hamline
1932-33	Hamline	1957-58	UMD
1933-34	Hamline	1958-59	UMD
1934-35	Hamline	1959-60	Hamline
1935-36	Hamline	1960-61	UMD
1936-37	Macalester	1961-62	UMD
1937-38	Gustavus & Hamline	1962-63	Augsburg
1938-39	St. Mary's & Hamline	1963-64	Augsburg
1939-40	St. Mary's	1964-65	Augsburg
1940-41	Hamline	1965-66	St. Thomas
1941-42	Hamline	1966-67	St. Thomas
1942-43	Hamline	1967-68	Gustavus
1943-44	St. Thomas	1968-69	St. John's
1945-46	St. Thomas	1969-70	St. Thomas
1946-47	Hamline	1970-71	St. Thomas

\*UMD joined MIAC

**Top Shops**

**Continental Coiffures**

For Continental Flair

Duluth - 4623 E. Sup. St. - 525-5161

Open Tues. & Thurs. Eve.

**Medical Arts Beauty Salon**

Visit Us One Flight Up To Where Women Are Pampered

Open Tues. & Thurs. Evenings

722-1771



VISIT ONE OF US FOR QUALITY SERVICE AT MODERATE PRICES

## **NORM'S RELIABLE**

JEWELRY - GIFTS - CAMERAS

"Sports of All Sorts"

**211 West Superior Street  
722-2820**

## **Smart Student Shoes**

CAMPUS STYLES IN CASUAL,  
DRESS or BOOTS

FRENCH SHRINER - CROSBY SQUARE  
SEBAGO MOCS - HUSH PUPPIES  
DEXTER and MANY OTHERS

GLEN WELD'S

### **Clark Shoe Co.**

16 No. 1st Ave. West

## **FALK'S WOODLAND PHARMACY**

"IN THE WOODLAND SHOPPING CENTER"

**1 Calvary Road 728-4242**  
Your REXALL Store

"COME AS YOU ARE"

**MARVELOUS FOOD  
SPEEDY SERVICE**

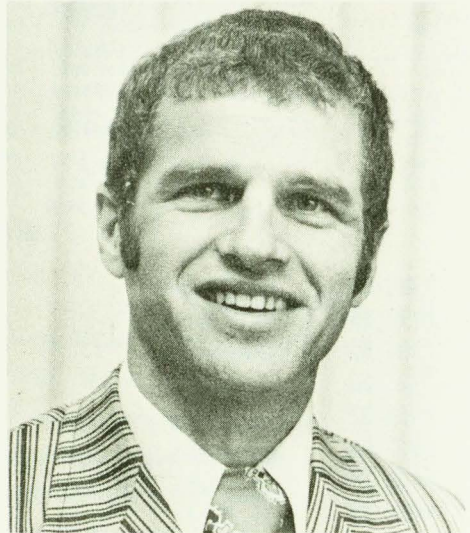


MEDICAL ARTS BLDG.  
DOWNTOWN DULUTH

CHILDREN'S PORTIONS  
OPEN SUNDAYS

Recommended by Roland C. Hill of HILLSWAY

## **HEAD COACH**



**MAURICE RAY**

The UMD basketball program has been injected with a new serum this year and the doctor is Maurice Ray.

After going through a period of doldrums the last few years, UMD basketball could be entering a new era in 1971-72, and Ray's enthusiastic philosophy of "pressure basketball" appears to be headed toward becoming a household word among Duluth area sports fans.

Ray, 31, comes to UMD this year after working as an assistant coach at the University of Utah under Jack Gardner, one of the nation's most respected basketball minds.

Ray played for two years with the Buchan Bakers of the AAU and then began a successful coaching career at Powers High School (Ore.). He was at Powers for six years...the highlight coming in 1967 when Powers won the state tournament and Ray was named "Coach of the Year."

He moved on to Ashland High School (Ore.), where in two years he revived the team from 10 straight last place finishes to third place in the conference.

Ray was an All-Conference guard and the school's "Most Valuable Athlete" at Pacific University, where he earned his B.S. degree in physical education. He received his M.A. degree at Idaho State where he also served as an assistant coach, and got his Ph.D. last summer at the University of Utah.

Ray is married and the father of four children.

## ASSISTANT COACH

TRENT MAGNER



Trent Magner, a 1971 graduate of Idaho State, is the assistant varsity and head freshman coach for the basketball Bulldogs this season.

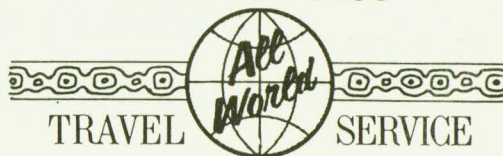
Magner, 22, received his B.S. degree in physical education last June and is pursuing an advanced degree at UMD this year. Magner was an outstanding guard for Idaho State and was an excellent shooter once sinking 16 straight free throws in one game. He was also a highly-sought football player after graduating from high school in Paoli, Ind., his hometown.

Magner met head coach Maurice Ray at Idaho State, where Ray was the assistant basketball coach. Ray was impressed with Magner's enthusiasm for a running game, which is sure to rub off on the team.

### THE COACHING ROLLS

	Won	Lost	Pct.
Frank Kovach, 1931	6	9	.400
Lloyd Peterson, 1932-43	105	71	.564
Charles Mourin, 1945	1	2	.333
Frank Puglisi, 1946-47	8	18	.311
Joe Gerlach, 1948-49, 52-53	29	30	.492
Ray Isenberger, 1950-51, 53-54	48	44	.522
Lewis Rickert, 1951	3	3	.500
Norm Olson, 1955-69	228	136	.626
Norb Fox, 1969-70	18	34	.346

EVERYTHING IN TRAVEL ANYWHERE!  
BY EXPERIENCED TRAVEL CONSULTANTS  
A World of Experience To Serve You  
DOMESTIC • FOREIGN  
AIR • STEAMSHIP • TOURS  
**dial: 727-8456**



TRAVEL SERVICE  
PALLADIO BLDG. 4th AVE. W. & SUP. ST.  
DULUTH, MINN. • PHONE 727-8456

COMPLIMENTS OF . . .

## PLET'S GROCERY

Complete Grocery & Snack Needs  
Only Blocks from the Campus

Open 8 to 10 Daily

**1619 Woodland Ave.**

**724-8525**

Your Locally-Owned Linen Supply

## DULUTH LAUNDRY

We Specialize In Cleaning and Repairing

Athletic Uniforms

17 North 20th Avenue West

727-2955

## Fashioned Clothes

that are **Winners** on the **Campus Scene**.

We invite you to shop our store for new styles and values for your needs. We feature nationally advertised lines and aim to please you in every way. 10% discount on items as arranged by Student Association

**FAMOUS** CLOTHING CO.  
12 East Superior Street

# LAKE-AIRE MOTEL

2416 LONDON ROAD — E. HIWAY 61

ON LAKE SUPERIOR — DULUTH, MINN.

Duluth Phone 218-724-8513

7 Newly Refurbished Units . . . Air Conditioning . . . TV . . . Room Phones . . . Individual Thermostat Hot Water Heat Controls . . . Ceramic Tile Bath & Showers . . . Conference Room Accommodates 100 . . . Bottle Shop . . . Continental Breakfast.

Diners Club  
and American  
Express Credit  
Cards Honored



You may call  
toll free  
for reservations  
1-800-437-2035

THIS STORE  
IS DESIGNED  
FOR YOUR  
PLEASURE.

"THE UNUSUAL  
AND RARE  
ARE HERE  
FOR YOU"

## LAKE-AIRE BOTTLE SHOP

2416 LONDON ROAD - 724-8818

We Feature the Most Complete Line of Domestic and Imported Cordials and Liquors

Lake Aire has the Finest of American and European Wine in the Tri-State Area.

University of Minnesota-Duluth  
1971-72 Basketball Schedule

<u>DATE</u>	<u>OPPONENT</u>	<u>SITE</u>	<u>TIME*</u>
Dec. 2	Northern Iowa	Cedar Falls	8:00
Dec. 4	Mankato	Mankato	8:00
Dec. 16	U of M-Morris	Morris	8:00
Dec. 18	Macalester	Duluth	7:30
Dec. 21,22,23	Lakehead Tourn.	Thunder Bay	6:00 & 8:00
Jan. 3	Gustavus	St. Peter	7:30
Jan. 8	Concordia	Duluth	3:00
Jan. 10	Augsburg	Duluth	7:30
Jan. 12	St. Thomas	Duluth	7:30
Jan. 15	St. John's	Collegeville	7:30
Jan. 19	Hamline	Duluth	7:30
Jan. 26	Augsburg	Minneapolis	7:30
Jan. 29	St. Mary's	Winona	7:30
Feb. 2	Macalester	St. Paul	7:30
Feb. 5	Gustavus	Duluth	7:30
Feb. 7	Wis. State-Superior	Superior	8:00
Feb. 9	Concordia	Moorhead	7:30
Feb. 12	St. Thomas	St. Paul	7:30
Feb. 14	No. Michigan	Marquette	7:00
Feb. 16	St. John's	Duluth	7:30
Feb. 19	Hamline	St. Paul	7:30
Feb. 24	St. Mary's	Duluth	7:30
Feb. 26	Wis. State-Superior	Duluth	3:00
Feb. 28	No. Michigan	Duluth	7:30

\*All Times C. S. T.

---



---

**S P O R T S**

**6 PM *WDIO-TV* 10 PM**

---



---

# DAVE ZENTNER Agency

LIFE, HEALTH, PENSION, GROUP

715 1st American Bank Building

Phone: (218) 727-7437

For the best in professional insurance  
counseling see a trained Bankerslifeman

Kerry LaPine

John A. Susnik

Trennis G. Yoder

**THE BANKERS LIFE** 

BANKERS LIFE COMPANY DES MOINES, IOWA

*If you just bought a car  
and it wasn't at Kolars,  
you paid too much!*

**Kolar Buick**

# Nick's Pizzeria

The **FINEST** In Town

Call: 728-4416

**3 DULUTH LOCATIONS:**

MR. NICK'S WOODLAND  
1601 Woodland Ave.

MR. NICK'S DOWNTOWN      BURGER KING  
220 W. Superior St.      West End

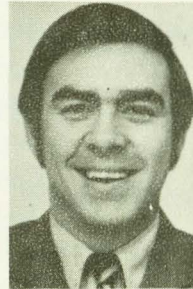
## ATHLETIC DEPARTMENT

### ADMINISTRATION

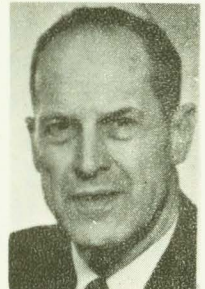
Ralph Romano is in his third season of overseeing UMD's ten sport athletic program encompassing 300 students. An alumnus of UMD, Romano has previously served the department as sports publicity director, ticket manager and athletic business manager before



ROMANO



McLEOD



RICKERT

he was elevated to assistant athletic director in 1968.

Following the retirement of Lloyd Peterson who served UMD athletics for 38 years, Romano was the logical candidate to fill the vacated seat.

While serving in the athletic department, Romano coached the Bulldog hockey team for nine years (1959-68) and played a dominant role in gaining entrance into the WCHA, the nation's most demanding college hockey league.

Romano's chief assistant is athletic business manager Bruce McLeod, also a UMD graduate.

McLeod won local fame as a member of the Bulldog hockey team from 1966-69. He co-captained the team during his senior year and was a constant scoring threat from his left wing position.

McLeod's duties include supervision of athletic publicity and range from continuous correspondence with the news media and opposing schools to handling the financial records.

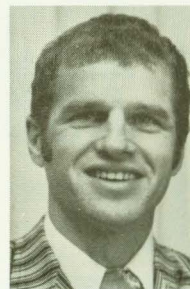
Secretary Kathy Erickson toils with the paper work and ticket arrangements for the department.

### COACHING STAFF

UMD's athletic program gets underway even before the scholastic year begins in the fall. Jim Malosky, now in his 14th season at UMD, kicks-off the



SHERCLIFFE



RAY



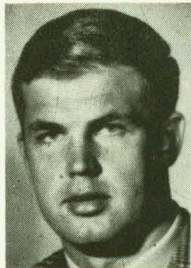
MALOSKY

season with footballs flying in the air. Third-year man Neil Ladsten, who operates as the university's wrestling mentor, Mark Lundgren, Al Decker and Bill Lippitt assist Malosky in football. Terry Shercliffe, a three-year veteran of coaching freshman hockey, begins his second year as head coach this season. Maurice Ray takes over the reigns as head basketball coach while Gary Plank, a graduate student at UMD, takes over as the swimming coach. Al Holland begins his second year coaching UMD's baseball program.

The dean of UMD coaches, Lew Rickert now in his 23rd year at UMD, pilots the golf and tennis teams in the spring. Miss Eleanor Rynda, one of the few women coaches of men's college varsity teams across the country, is in command of the track and cross country squads for her fourth season.

Malosky, Ladsten, Shercliffe, Rickert, Holland Ray and Rynda are all instructors in UMD's physical education department.

Rickert is a former athletic director at UMD, manning the post from 1947-55.



LADSTEN



RYNDA



HOLLAND

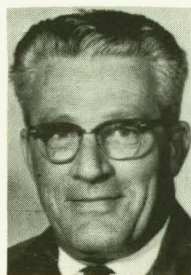
**SERVICE STAFF**

Don Roach became UMD's first trainer last season. A graduate of the University of Indiana, Roach gives attention to the care of the UMD athletes and instructs in the Physical Education Department.

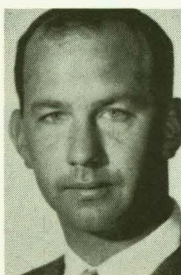
Assisting Bruce McLeod with UMD's athletic publicity is Tom Knutson, a junior at the university.

Knutson graduated from Duluth East in 1969 and has spent the past three summers as an intern on the Duluth Herald & News Tribune sports staff. At UMD he handles the releases and brochures and assists with press box operations during games.

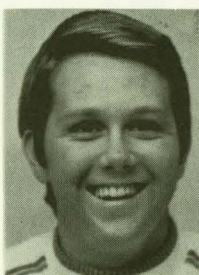
Rounding out the staff is equipment manager, Clarence Hillman.



HILLMAN



ROACH



KNUTSON

**TOM'S CONOCO STATION**

CALL US FOR QUALITY WORK  
**727-9557**

- ★ TUNE UPS
  - ★ BRAKE SPECIALISTS
  - ★ MINOR REPAIRS
  - ★ WHEEL BALANCING
  - ALL ACCESSORIES
  - TIRES - BATTERIES
- BY APPOINTMENT FOR PICKUP, DELIVERY  
TOM STAUBER, MGR.

2105 Central Entrance

Duluth

**CURLY'S ROUND-UP**

SPLIT LEVEL BAR • COLORED TV

Bus Trips For All UMD  
Hockey Games—Leaves 7:30 p.m.

**2013 West Superior St.**

**727-9895**



**No. 1**

**in College Sales**

**YOUR COLLEGE MASTER REPRESENTATIVES**

1225 Tower Avenue  
Telegram Building - Room 207  
Superior, Wisconsin 54880

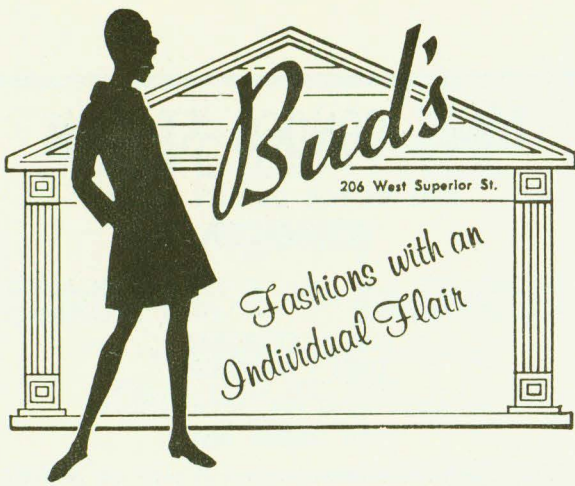
**GERRY CAQUETTE**

Bus. 392-5636  
Res. 398-3253

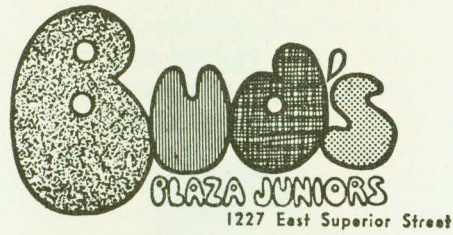
**RICHARD J. BAINE**

Bus. 392-5636  
Res. 727-7519

FIDELITY UNION LIFE INSURANCE COMPANY  
Home Office - Dallas, Texas



Swing into tomorrow today at . . .



. . . for juniors and teens

keeping pace with a growing UMD

# MOUNT ROYAL DRUG

**PRESCRIPTION PHARMACY**

Cosmetics - Photo Supplies - Gifts - Gibson Cards  
 Baby Needs - Bridgeman Ice Cream  
 Tobacco Department

**GO — BULLDOGS — GO!**

**Closest to "U"**

Woodland and St. Marie Street  
 in the  
 Mount Royal Shopping Center

**Free Delivery**

**728-4224**

**COLD BEER**

**DINNER WINES**

"The Best in Cordials"

## London Road Liquor Store

**1932 LONDON ROAD**

**724-0404**

M. B. OLSON

JIM "CUB" OLSON

Off-Street Parking

Delivery Service



# MINNESOTA, DULUTH ROSTER

No.	Name	Pos.	Yr.	Hgt.	Wgt.	Hometown
14	Hugh Casper.....	G	Jr.	5-11	154.....	Duluth, Mn. (East)
32	Dave Dollerschell.....	G	Jr.	6-4	169.....	Litchfield, Mn.
24	Greg Fisher.....	F	Fr.	6-0	152.....	Logansport, Ind.
10	Ed Haak.....	G	Fr.	5-10	151.....	South Bend, Ind.
22	Dan Hahn.....	F	Jr.	6-4	194.....	White Pass, Wash.
42	Doug Hurd.....	F	Fr.	6-4	195.....	Pipestone, Mn.
34	Craig Jensen.....	F	Jr.	6-4	193.....	Rochester, Mn.
12	Mark Johnson.....	G	Fr.	6-0	155.....	Duluth, Mn. (East)
52	Mike Josephson.....	F	Sr.	6-5	220.....	Hoyt, Lakes, Mn.
44	Mark MacDonald.....	F	So.	6-6	228.....	Two Harbors, Mn.
20	Tim O'Melia.....	G	So.	6-0	160.....	Duluth, Mn. (Cathedral)
30	Mike Zimmerman.....	F	Fr.	6-7	173.....	Chicago, Ill. (Elmwood Park)

COACH: Maurice Ray  
 ASS'T. COACH: Trent Magner

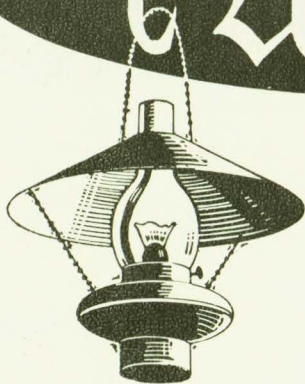
GUYS (and GALS)



# PAINT SHACK


209 West Superior St.

the Underground



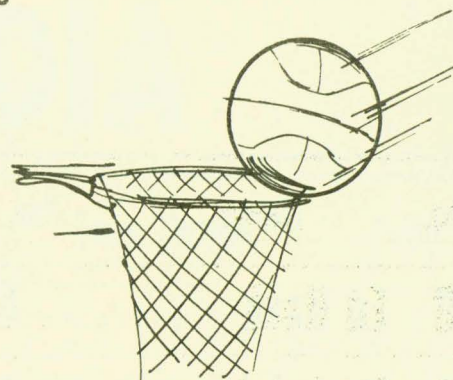
When you want a fashionable item in clothing,  
try shopping the shops that feature the newest  
in the best of taste.  
Remember, the right fashion has no age!

Ed Barbo's  
**Columbia**  
*Fashion Clothes*  
 for MEN and STUDENTS  
 303 W SUPERIOR ST.



## UMD BASKETBALL STATISTICS

Through 8 Games



### OVERALL (5-3)

Player	G	FG-FGA	Pct.	FT-FTA	Pct	Reb.	PF	TP	Ave.
MacDonald	8	58-123	.471	25-33	.758	87	20	141	17.6
Hahn	8	50-92	.543	12-18	.667	43	22	112	14.0
Josephson	8	40-95	.421	23-38	.605	82	33	103	12.9
Dollerschell	8	40-103	.388	19-33	.575	55	30	99	12.4
Haak	8	36-99	.364	12-20	.600	21	26	84	10.5
Jensen	8	24-47	.511	31-48	.646	82	18	79	8.9
O'Melia	8	14-28	.500	7-11	.636	12	14	35	4.4
Casper	8	6-21	.286	6-12	.500	8	14	18	2.3
Zimmerman	6	3-12	.250	6-10	.600	9	6	12	2.0
Hurd	4	0-6	.000	1-3	.333	88	2	1	0.3
Others	--	3-6	.500	4-4	1.000	4	4	10	---

UMD TOTALS	8	274-632	.433	146-230	.635	391	189	694	86.8
OPPTOTALS	8	236-588	.401	171-254	.673	341	162	643	80.4

### RESULTS TO DATE

- Dec. 2 Northern Iowa 87, UMD 82
- Dec. 4 Mankato State 94, UMD 80
- Dec. 16 UMD 60, Minnesota-Morris 59 (OT)
- Dec. 18 UMD 100, Macalester 81
- Dec. 21 UMD 118, Western Ontario 80
- Dec. 22 UMD 76, Bethel 61
- Dec. 23 UMD 96, Lakehead 94
- Jan. 3 Gustavus 87, UMD 82

### MIAC (1-1)

Player	G	FG-FGA	Pct.	FT-FTA	Pct	Reb.	PF	TP	Ave.
Macdonald	2	18-34	.529	4-7	.571	18	6	40	20.0
Hahn	2	13-27	.481	7-9	.777	17	4	33	16.5
Josephson	2	8-20	.400	4-10	.400	19	6	20	10.0
Dollerschell	2	11-28	.478	1-2	.500	17	7	23	11.5
Haak	2	8-21	.389	3-7	.429	4	6	19	10.5
Jensen	2	9-10	.500	5-12	.417	21	4	23	11.5
O'Melia	2	6-8	.750	3-5	.600	3	4	15	7.5
Casper	2	2-2	.167	0-0	---	1	4	4	2.0
Zimmerman	1	0-5	.000	4-6	.667	3	1	4	4.0
Hurd	1	0-5	.000	1-2	.500	5	0	1	1.0

UMD TOTALS	2	75-163	.460	32-60	.533	108	42	182	91.0
OPP TOTALS	2	65-161	.403	38-60	.633	88	44	168	84.0

### SEASON HIGHS

- MOST POINTS:** Josephson 30  
against Lakehead 12-23-71
- MOST FIELD GOALS:** Josephson 13 of 17  
against Lakehead 12-23-71
- MOST FREE THROWS:** Jensen 11 of 13  
against Western Ont. 12-21-71
- MOST REBOUNDS:** Josephson 19  
against Lakehead U.  
MacDonald 18  
against Bethel 12-22/23-71

### NEXT HOME GAMES:

January 10—AUGSBURG —7:30 p.m.

January 12—ST. THOMAS—7:30 p.m.

# UMD

No.	Name	Pos.	Field Goals	Free Throws	Fouls
10	Ed Haak	G	2 2 2 2 2 2 2 2 2 2 2 2 2 2 2 2 2 2	1 1 1 1 1 1 1 1 1 1 1 1 1 1 1 1	1 1 1 1 1
12	Mark Johnson	G	2 2 2 2 2 2 2 2 2 2 2 2 2 2 2 2 2 2	1 1 1 1 1 1 1 1 1 1 1 1 1 1 1 1	1 1 1 1 1
14	Hugh Casper	G	2 2 2 2 2 2 2 2 2 2 2 2 2 2 2 2 2 2	1 1 1 1 1 1 1 1 1 1 1 1 1 1 1 1	1 1 1 1 1
20	Tim O'Melia	G	2 2 2 2 2 2 2 2 2 2 2 2 2 2 2 2 2 2	1 1 1 1 1 1 1 1 1 1 1 1 1 1 1 1	1 1 1 1 1
22	Dan Hahn	F	2 2 2 2 2 2 2 2 2 2 2 2 2 2 2 2 2 2	1 1 1 1 1 1 1 1 1 1 1 1 1 1 1 1	1 1 1 1 1
24	Greg Fisher	F	2 2 2 2 2 2 2 2 2 2 2 2 2 2 2 2 2 2	1 1 1 1 1 1 1 1 1 1 1 1 1 1 1 1	1 1 1 1 1
30	Mike Zimmerman	F	2 2 2 2 2 2 2 2 2 2 2 2 2 2 2 2 2 2	1 1 1 1 1 1 1 1 1 1 1 1 1 1 1 1	1 1 1 1 1
32	Dave Dollerschell	G	2 2 2 2 2 2 2 2 2 2 2 2 2 2 2 2 2 2	1 1 1 1 1 1 1 1 1 1 1 1 1 1 1 1	1 1 1 1 1
34	Craig Jensen	F	2 2 2 2 2 2 2 2 2 2 2 2 2 2 2 2 2 2	1 1 1 1 1 1 1 1 1 1 1 1 1 1 1 1	1 1 1 1 1
42	Doug Hurd	F	2 2 2 2 2 2 2 2 2 2 2 2 2 2 2 2 2 2	1 1 1 1 1 1 1 1 1 1 1 1 1 1 1 1	1 1 1 1 1
44	Mark MacDonald	F	2 2 2 2 2 2 2 2 2 2 2 2 2 2 2 2 2 2	1 1 1 1 1 1 1 1 1 1 1 1 1 1 1 1	1 1 1 1 1
52	Mike Josephson	F	2 2 2 2 2 2 2 2 2 2 2 2 2 2 2 2 2 2	1 1 1 1 1 1 1 1 1 1 1 1 1 1 1 1	1 1 1 1 1



1971/72 NORTH STAR SCHOLARSHIP CONTRIBUTORS--\$100 OR MORE

Dr. Curtis F. Ahrens  
 Airport State Bank  
 Harry Allenfall's, Inc.  
 Dr. James M. Anderson  
 Dr. Gordon C. Amundson  
 Dr. Vernon L. Amundson  
 Banker's Life  
 Bell Brothers Funeral Home  
 Roger Bergman  
 Big Duluth  
 Robert W. Bridges  
 Chinese Lantern  
 James Claypool  
 Tom Clure  
 Colonel Sanders  
 Douglas Cudmore  
 Dr. Raymond W. Darland  
 Dr. Lloyd Dedon  
 Dr. Harry R. Dorvinen  
 Dr. William Douglas  
 Duluth Clearing House Assn.  
 First American National Bank  
 Northern City National Bank  
 Northwestern Bank of Commerce  
 Duluth National  
 Duluth Clinic  
 Duluth-Superior Sports Broadcasters  
 Assn.  
 Dr. M. M. Fifield  
 Dr. Richard Fisher  
 Frederick's, Inc.  
 Fryberger, Buchanan, Smith,  
 Sanford & Frederick  
 Jeremy Fryberger  
 Robert M. Fryberger, Jr.  
 Mrs. Robert M. Fryberger, Sr.  
 Glass Block Store  
 Goldfine's By-the-Bridge  
 Dr. Robert J. Goldish

Leonard E. Griffith  
 Harper, Eaton & Gustafson  
 Harbor City Oil  
 Dr. Vernon Harrington  
 "Ole" Haugrud  
 Dr. Robert Heller  
 N. A. Hewitt  
 Bardon Higgins  
 Raymond Higgins  
 Byron Holje  
 Joseph P. Hubert  
 Dr. Willis B. Irons  
 Earl Jacott Memorial  
 Philip R. Johnson  
 Dr. John P. Knoedler  
 Dr. Stuart L. Jensen  
 Lakehead Electric  
 Dr. Robert D. LeVasseur  
 Fred C. Lewis  
 Minnesota Power & Light Co.  
 Sidney Mason  
 Medical Arts Pharmacy  
 Dr. William G. Merrick  
 Dr. F. B. Moore  
 Dr. Mylon B. Morris  
 Mount Royal Pharmacy  
 New England Life  
 Noel Muller  
 Norm's Reliable  
 North Shore State Bank  
 Oneida Realty  
 Pantour, Inc.  
 Park State Bank  
 Pella Products  
 Dr. John H. Peterson  
 The Pickwick  
 Bert Pollan  
 Dr. John E. Power

Prindle-Jones Co.  
 Radisson Hotel  
 E.L. Rasmussen  
 Dr. A. E. Reardon  
 Dr. Henry H. Reed  
 Ralph A. Romano  
 Henry Royer  
 Jack D. Salo, Inc.  
 Security Jewelers  
 Mitchell Sill  
 Peter H. Sneve  
 George H. Spencer, Jr.  
 Delano Stauber  
 Dr. W. A. Stein  
 Stewart-Taylor Printing Co.  
 Stewart's Wheel Goods  
 Jim Stuber  
 Sullivan Oil Co.  
 Roderick Syck  
 Teamsters Local 346  
 Twin Ports Opticians  
 Dr. J. E. Wall  
 WDSM  
 West End Iron & Metal  
 Western National Bank  
 Wheeler Burns & Buchanan  
 Hubert D. Wheeler  
 Dr. Allan A. Young  
 Dave Zentner

MANY OTHERS CONTRIBUTE FROM \$10-\$99

# Schrader Drug

## "Everything in Drugs"

Free Parking --- S & H Green Stamps

504 E. 4th St.

722-1788

THE TEAM TO WATCH  
**EYEWITNESS  
NEWS**

**wdsmtv6**



# CONCORDIA

# ROSTER

No.	Name	Pos.	Yr.	Hgt.	Wgt.	Hometown
5	James Andreson.....	F	Jr.	6-3	203.....	Clara City, Minn.
13	Dave Reiten.....	C	Jr.	6-5	195.....	Minot, No. Dak.
51	Bruce Kjesbo.....	C	So.	6-5	187.....	Moorhead, Minn.
45	Dick Knutson.....	F	So.	6-5	193.....	Warren, Minn.
43	Gary Johnson.....	G	Sr.	6-2	179.....	Moorhead, Minn.
35	James Bjorklund.....	F	So.	6-3	172.....	Fargo, No. Dak.
33	Peter Holte.....	C	Jr.	6-4	193.....	Moose Lake, Minn.
31	Rod Dahlberg.....	G	Jr.	6-3	173.....	Moose Lake, Minn.
25	Randy Hachfeld.....	F	So.	6-3	213.....	Faribault, Minn.
23	Roger Jenson.....	G	Sr.	6-2	191.....	Wendell, Minn.
21	Phil Maring .....	G	So.	5-11	158.....	Kenyon, Minn.
15	Dave Tranby.....	G	So.	6-1/2	166.....	Moorhead, Minn.
3	Robert Holt.....	G	So.	5-11	164.....	Osakis, Minn.
11	Kraig Wold.....	G	Jr.	6-1	177.....	Rochester, Minn.
	Karl Beck.....	G	Jr.	6-0	181.....	Fergus Falls, Minn.
	Don Williamson.....	G	Jr.	5-10	145.....	Freemont, Ohio

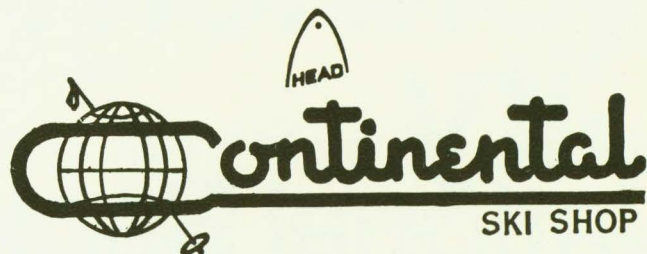
HEAD COACH: Sonny Gulsvig





## *All Heads have to beat is the Clock*

Other racing skis have to beat Heads. Which isn't easy. These proud, yellow-prowed Competitions have very winning ways...with no end of trophies to prove it. Downhill, Slalom, and Giant Slalom versions make said events eventful. The GS is incomparable, too, for you experts who demand the most demanding all-around ski. Such speed, stability, and control didn't just happen. Head engineering at the start is what helps put you first at the finish.



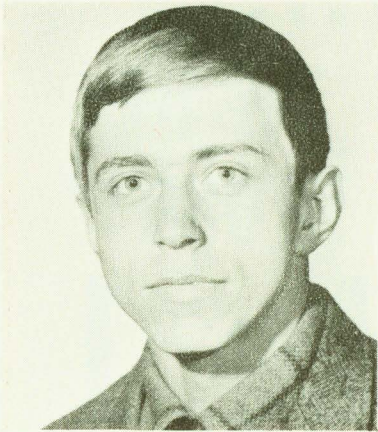
1305 EAST FIRST STREET, DULUTH, MINNESOTA, PHONE: 728-4466  
OPEN WEEKDAYS 9:30 A.M. to 9 P.M. SATURDAYS 9:30 A.M. to 5 P.M.  
FREE SKI FILMS, SNOW REPORTS — WE ACCEPT TRADE-INS



**Northern  
City  
National Bank**

306 WEST SUPERIOR STREET, DULUTH, MINNESOTA 55801  
PHONE 722-3301, MEMBER FDIC

# THE BULLDOGS



14

HUGH CASPER

GUARD

5-10, 160 pounds, Junior, Duluth (East High)

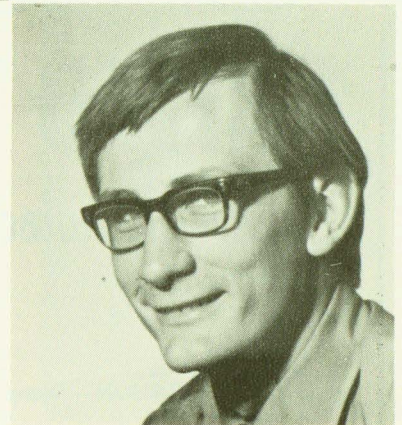
An excellent ball handler with good quickness and a fine outside shot. Hugh's play will be an important factor this year for the UMD basketball team. Started three games last year and saw action in 18, mainly as a valuable reserve. Tremendous hustle, hard-working, dedicated to basketball. Physical education major.

32

DAVE DOLLERSHELL GUARD

6-4, 190 pounds, Junior, Willmar, Mn.

Dave has the potential to break into the starting lineup as a big guard this year for the UMD basketball team. He averaged 19 points per game for the top junior college team in the state last year. Excellent defensive player, quick ball handler and anticipates the play well. Should be a valuable passer. Driving guard with imaginative moves. Physical education major.



GO! BULLDOGS GO!

## HUBERT D WHEELER & ASSOCIATES

NEW ENGLAND LIFE

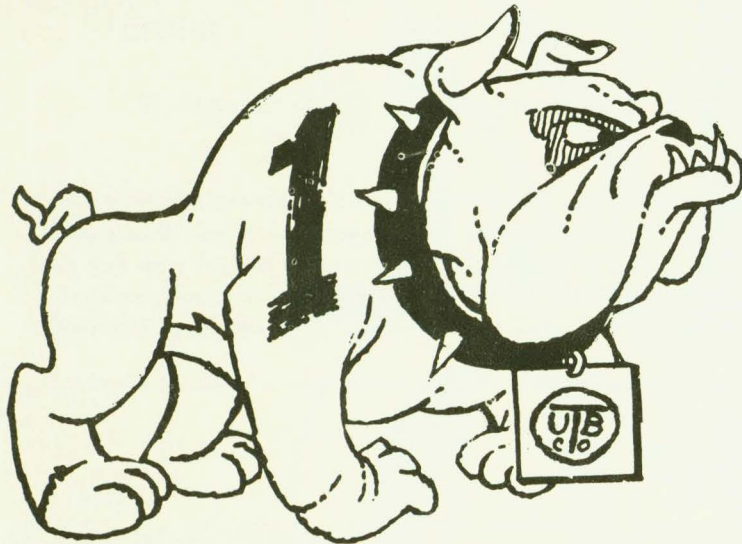
NEL EQUITY SERVICES CORPORATION

BENEFIT PLAN SERVICES, INC.

711 First American Building

722-5566

# WE'RE DETERMINED...



# TO BE YOUR No. 1 SOURCE!

## UNITED TRUCK BODY CO. Inc.

Custom Manufacturers and Distributors of Truck Bodies and  
Allied Equipment

HERCULES-GALION—Dump Bodies & Hoists

GLAD HILL -- Snow plows

WESTERN—Snow Handling Equipment

DORSEY—Van & Flatbed Trailers

LuVERNE—Fire Apparatus

TULSA—Winches & P.T.O.

VENCO—Liftgates

MARMON-HERRINGTON -- All Wheel Drive

BLUE BIRD—School & Transit Buses.

HOLAN—Aerial Devices & Derrick Diggers

UNISTEEL—Steel & Aluminum Van Bodies

STAHL —Utility Bodies & Equipment

OMAHA STANDARD—Platform & Grain Bodies

ANTHONY—Liftgates & Dump Bodies

MASTERGUARD—Pickup Bumpers & Accessories

### NORTHERN

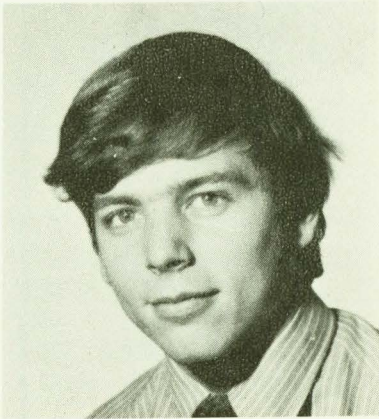
A CUSTOM BODY DESIGNED AND MANUFACTURED BY US TO  
YOUR SPECIFICATIONS — FOR YOUR SPECIFIC JOB!

## 3357 Miller Trunk Highway

## Duluth, Minnesota

## 218-729-6000

# THE BULLDOGS



24                      GREG FISHER                      GUARD

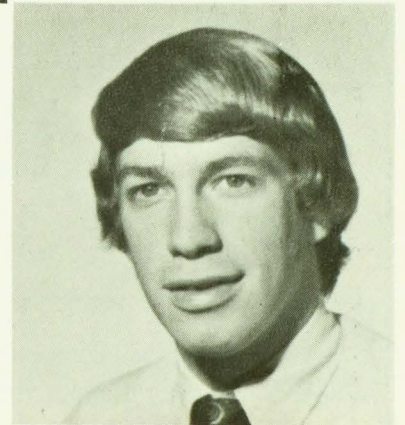
5-11, 160 pounds, Freshman, Logansport, Ind.

Greg is a good shooter with excellent one-on-one moves. One of the UMD basketball team's fastest players and should fit in well with the "pressure basketball" this year. Averaged over 21 points per game in the tough North Central Indiana League. Great attitude and hustle. History major.

10                      ED HAAK                      GUARD

5-11, 160 pounds, Freshman, South Bend, Ind.

Ed was the playmaker for John Adams High School team which compiled a 24-3 record in one of the nation's toughest high school leagues. Possibly the best field general on the team-excellent shot and ball handler with sharp passing abilities. His leadership qualities could help make him a regular player for UMD in his first year. Impressive in pre-season. Pre-medicine student with 4.0 grade average.



## "A WINNING TEAM IN ANY LEAGUE"

John Owens  
President

John Ring  
Investments

Bob Skinner  
Trust Dept.

Bob Ellefson  
Comm. Loan

Mike Jubie  
Mort. Loan

Marty Maclain  
Purchasing Dept.

Don Wolfe  
Inst. Loan

Wayne Sodergren  
Inst. Loan

Harold Rudeck  
New Accounts

Chuck Henderson  
Marketing

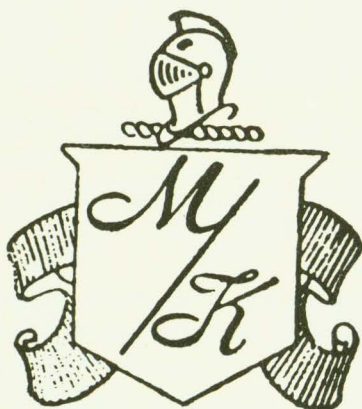
Don Snyder  
Operations

# Northwestern Bank of Commerce

DULUTH, MINNESOTA 55802

MEMBER F.D.I.C.

TELEPHONE 722-4784



Be an  
M & K Man

Choose from the Largest collection of mens clothing and furnishings in the area. We also feature one of the Nations largest selections of double knit slacks, suits and sportcoats.

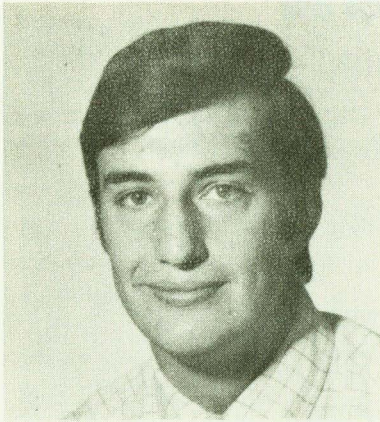
*Mortrud - Koneczny*

*2016 West Superior St.*

*Duluth, Minnesota*

*Phone 722-2525*

# THE BULLDOGS



22                      DANNY HAHN                      FORWARD

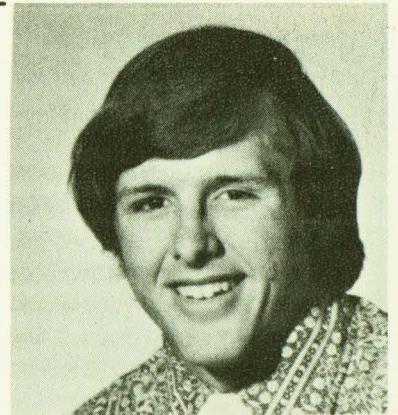
6-4½, 200 pounds, Junior, Centralia, Wash.

Danny is one of the junior college players who could be a potential regular for the UMD basketball team this year. An outstanding shooter with a fine touch from any range, he has an excellent jump shot from up to 25 feet. Great free throw shooter. Fine student with great attitude, could fit into lineup immediately. Physical education major.

42                      DOUG HURD                      GUARD-FORWARD

6-3, 190 pounds, Freshman, Pipestone, Mn.

Doug is a fine all-around athlete who was rated the top prospect in Pipestone's district. He lead his basketball and baseball teams to fine seasons. Good inside player but needs to improve his shooting range. Good potential and may be able to help the UMD basketball team this year. Business Administration major.



## "A WINNING TEAM IN ANY LEAGUE"

John Owens  
President

John Ring  
Investments

Bob Skinner  
Trust Dept.

Bob Ellefson  
Comm. Loan

Mike Jubie  
Mort. Loan

Marty Maclain  
Purchasing Dept.

Don Wolfe  
Inst. Loan

Wayne Sodergren  
Inst. Loan

Harold Rudeck  
New Accounts

Chuck Henderson  
Marketing

Don Snyder  
Operations

# Northwestern Bank of Commerce

DULUTH, MINNESOTA 55802

MEMBER F.D.I.C.

TELEPHONE 722-4784

# BEST PLACE

to warm up before the game

to warm up after the game

to warm up during the game

and while we're on our favorite subject,  
there isn't a better place to warm up any time,  
game or no game.

## PRE AND POST GAME DINNERS A SPECIALTY

### In our Dining Room

(famous from coast to coast)

- Best food in Duluth, served The Flame way!
- Dancing on weekends to the Nonchalants

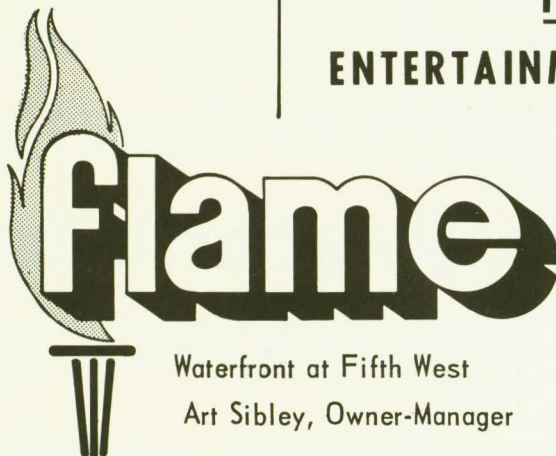
### In our Torch Bar

(everybody's favorite meeting place)

- He-Man Sandwiches
- Heroic Drinks
- Bulldog Specials
- Beautiful People

PLUS

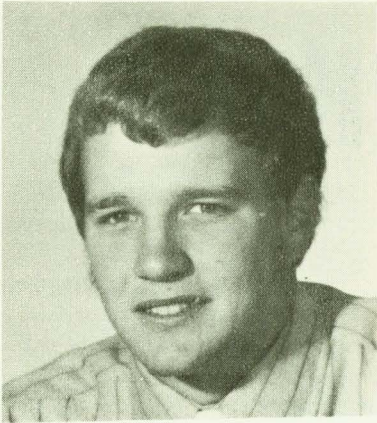
**ENTERTAINMENT NIGHTLY!**



Waterfront at Fifth West  
Art Sibley, Owner-Manager



# THE BULLDOGS



34 CRAIG JENSEN FORWARD

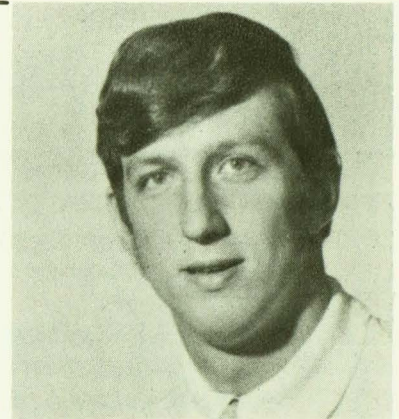
6-3, 190 pounds, Junior, Rochester, Mn.

Craig was a part-time starter for the UMD basketball team last year, stepping in well for captain Dave Lorenzen, who was injured much of the season. Had a .784 free throw percentage last year and was the third leading scorer with a 10.7 average. Good rebounder for his size, good inside moves. Would be top scoring threat with improved 15-foot jumpshot. Outstanding high school player on Rochester John Marshall's state championship team in 1969.

52 MIKE JOSEPHSON FORWARD

6-5, 220 pounds, Senior, Hoyt Lakes, Mn.

An All-MIAC selection for the UMD basketball team last year, Mike is the 1971-72 captain and the only returning full-time starter for the Bulldogs. An enthusiastic team-leader, fierce on the boards, Mike pulled down 257 rebounds last year for a three-year total of 589. His scoring average has been in double figures three years in a row. He will reach the 1,000 point career mark with his 45th point this season. Physical education major.



## "A WINNING TEAM IN ANY LEAGUE"

John Owens  
President

John Ring  
Investments

Bob Skinner  
Trust Dept.

Bob Ellefson  
Comm. Loan

Mike Jubie  
Mort. Loan

Marty Maclain  
Purchasing Dept.

Don Wolfe  
Inst. Loan

Wayne Sodergren  
Inst. Loan

Harold Rudeck  
New Accounts

Chuck Henderson  
Marketing

Don Snyder  
Operations

# Northwestern Bank of Commerce

DULUTH, MINNESOTA 55802

MEMBER F.D.I.C.

TELEPHONE 722-4784

*In Duluth it's the*

# PIERWIER

CHOICE LIQUORS

*Delicious*

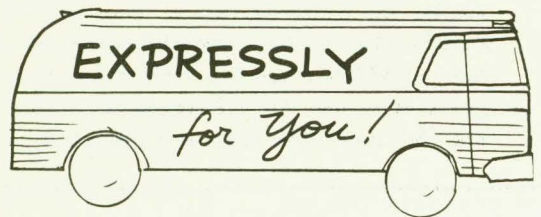
CHARCOAL - BROILED FOODS

Phone: 727-8901

508 East Superior St.

Duluth, Minnesota

**C**loquet  
**T**ransit



*for your convenience we offer . . .*

• **LUXURY HIGHWAY COACHES**

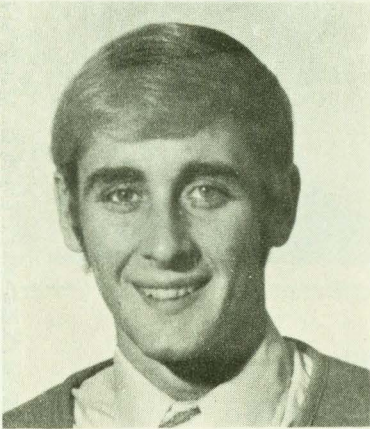
Equipped with reclining seats,  
air conditioning and rest rooms

• **ACTIVITY BUSES** • **VANS**

FOR INFORMATION CALL COLLECT **879-3391**

OR WRITE BOX 277 • CLOQUET, MINN. 55720

# THE BULLDOGS



12 MARK JOHNSON GUARD

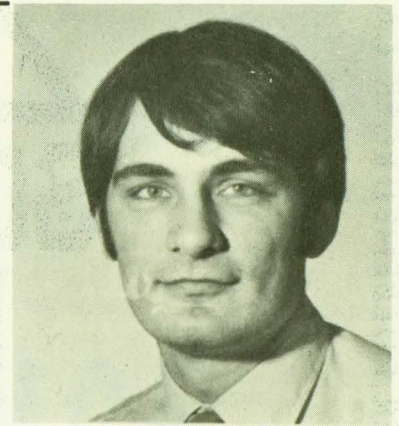
6-0, 150 pounds, Freshman, Duluth

One of the Bulldog basketball team's outstanding guard prospects, Mark led East High School to a 17-4 record last year. Great shooter who knows his range and takes his good shot. Must only improve on defense to begin helping the Bulldogs. Top student, good attitude and desire are big pluses for Mark. History major.

44 MARK MacDONALD FORWARD

6-5, 225 pounds, Sophomore, Two Harbors, Mn.

Mark broke into the lineup for UMD's basketball team at mid-season last year after transferring from the University of Minnesota, where he had a football scholarship. Very strong player underneath with good shot up to 18 feet. Great attitude and hustle. Bulldogs counting heavily on a good year from Mark, with his first full season ahead of him. Business administration major.



**Roger A. Bergman**

DISTRICT MANAGER

**Northwestern National Life Insurance Co.**

300 TORREY BUILDING, DULUTH, MINNESOTA

722-5823

FRENCHBURGER DULUTHBLIZZARDBURGER VIENNABURGER STROGA

BEFORE THE GAMES — AFTER THE GAMES

BETWEEN THE GAMES . . .

Join *EVERYBODY* at



## Mount Royal Shopping Center

(Off Woodland Avenue Near UMD)

FOR FUN EATING IN A PLEASANT ATMOSPHERE —  
 PINES BY DAY — CANDLELIGHT BY NIGHT — SNACKS  
 — 36 DINNERBURGERS — STEAKS — CHICKEN —  
 FONDUES — SPECIAL DESSERTS AND BEVERAGES —  
 A SPECIAL MENU JUST FOR CHILDREN — GROUP  
 ACCOMODATIONS — LOTS OF PARKING — ETC. —  
 — CORN ON COB — OPEN 7 DAYS A WEEK —

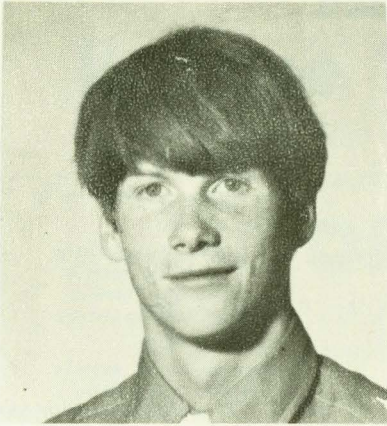
# 728-4701

NEW OWNERS --- THE BOWIE'S

SWISSBURGER WISCONSINBURGER RUEBENBURGER CANNIBALBURGER CHEESE'NPINEAPPLE

NOFFBURGER BULLDOGBURGER RABBITBURGER SAUNABURGER TOPLESSBURGER DAREBURGER

TEXASBURGER NAPOLIBURGER GOURMETBURGER HERMITBURGER



20

TIM O'MELIA

GUARD

6-0, 150 pounds, Sophomore, Duluth (Cathedral)

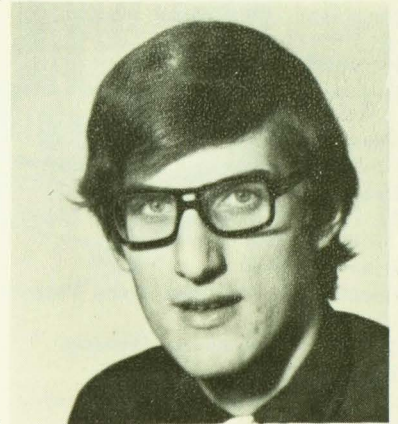
Tim was a regular on last season's UMD freshman basketball team, averaging in double figures. He has shown tremendous improvement and could be a factor in the guard situation this year. Great hustle and dedication. Just a half-step from breaking into more action. Physical education major.

30

MIKE ZIMMERMAN CENTER

6-7, 180 pounds, Freshman, Chicago, Ill.

Mike has the size and the scoring power to move in on the UMD varsity basketball team. He led his Chicago conference in scoring for Elmwood Park and was very tough on the boards. Could see a great deal of action this year for the Bulldogs, who need a man of Mike's height. One of top three freshmen along with Haak and Paine. Business administration major.



*"How She Go, Boys!"  
And Girls Too!*

# LAST CHANCE LIQUOR STORE

**BIGGEST SELECTION IN TOWN**

See Carl the International Playboy From London  
Paris, Rome and International Falls  
And His Wife Irene

**— WE DELIVER —**

**619 East 4th**

**Phone: 727-6825**

# MIAC COMPOSITE SCHEDULE

December 17-18  
 Concordia in Moorhead State Tourney  
 St. Mary's in Lakeland Tourney

December 18

Augsburg at Morris  
 Macalester at Duluth  
 Gustavus at Bradley Tech  
 Hamline at No. Eastern, Ill  
 St. Thomas vs. Alumni

December 20

Hamline at Chicago State  
 St. Thomas at So. West State

December 21-22-23

Duluth in Lakehead Tourney, Thunder Bay

December 22

Macalester at LaCrosse  
 St. Thomas at Morris

December 27-28-29

Augsburg & Gustavus in Luthern Brotherhood  
 Invitational at Augsburg

December 28-29

Hamline in Dubuque, Ia. Classic

December 28-29-30

St. John's & St. Thomas at St. Cloud  
 Holiday Tourney

December 29-30

Macalester in Hastings, Nebr. Tourney

December 30

Concordia at Northern, Aberdeen

December 29-30

St. Mary's in U of W Stout Tourney

December 31

Macalester at U of Mississipp

January 3, 1972

St. John's at St. Olaf  
 Duluth at Gustavus  
 Morris at Hamline

January 4

Lea at St. Thomas

January 5

Concordia at Hamline  
 St. Mary's at Dominion

January 7

Macalester in Florida Tourney  
 St. Petersburg

January 8

Gustavus at Augsburg  
 St. John's at Detroit  
 Concordia at Duluth  
 Hamline at St. Thomas

January 10

Augsburg at Duluth  
 St. Mary's at Macalester

January 12

Augsburg at Concordia  
 St. John's at Hamline  
 St. Thomas at Duluth  
 Gustavus at St. Mary's

January 15

Augsburg at St. Thomas  
 Duluth at St. John's  
 St. Mary's at Concordia  
 Macalester at Gustavus  
 River Falls at Hamline

January 17

Moorhead at Concordia  
 Hamline at Gustavus

January 19

St. John's at Augsburg  
 Macalester at Concordia  
 Hamline at Duluth  
 St. Thomas at St. Mary's

January 22

Augsburg at Hamline  
 St. Mary's at St. John's  
 Concordia at Gustavus  
 St. Thomas at Macalester

January 24

Concordia at No. Dak. State

January 26

Duluth at Augsburg  
 St. John's at Macalester  
 Gustavus at St. Thomas  
 Hamline at St. Mary's

January 29

St. Thomas at Concordia  
 Duluth at St. Mary's  
 Hamline at Macalester

February 1

St. Thomas at Creighton

February 2

St. Mary's at Augsburg  
 St. John's at Concordia  
 Duluth at Macalester  
 Gustavus at Hamline

February 5

Augsburg at Macalester  
 St. John's at St. Thomas  
 Hamline at Concordia  
 Gustavus at Duluth

February 7

Duluth at Superior

February 8

Augsburg at Gustavus

February 9

Duluth at Concordia  
 St. Thomas at Hamline  
 Macalester at St. Mary's

February 12

Concordia at Augsburg  
 Hamline at St. John's  
 Duluth at St. Thomas  
 St. Mary's at Gustavus

February 14

Augsburg at St. Mary's  
 Gustavus at St. John's  
 Duluth at Northern Michigan

February 16

St. Thomas at Augsburg  
 St. John's at Duluth  
 Concordia at St. Mary's  
 Gustavus at Macalester  
 Bethel at Hamline

February 19

Augsburg at St. John's  
 Concordia at Macalester  
 St. Mary's at St. Thomas

February 21

Gustavus at Concordia

February 22

St. John's at St. Mary's  
 Gustavus at Concordia

February 23

Duluth at Hamline  
 Macalester at St. Thomas

February 24

St. Mary's at Duluth  
 February 26  
 Macalester at St. John's  
 Superior at Duluth  
 St. Thomas at Gustavus  
 St. Mary's at Hamline

February 28

Northern Michigan at Duluth

March 1

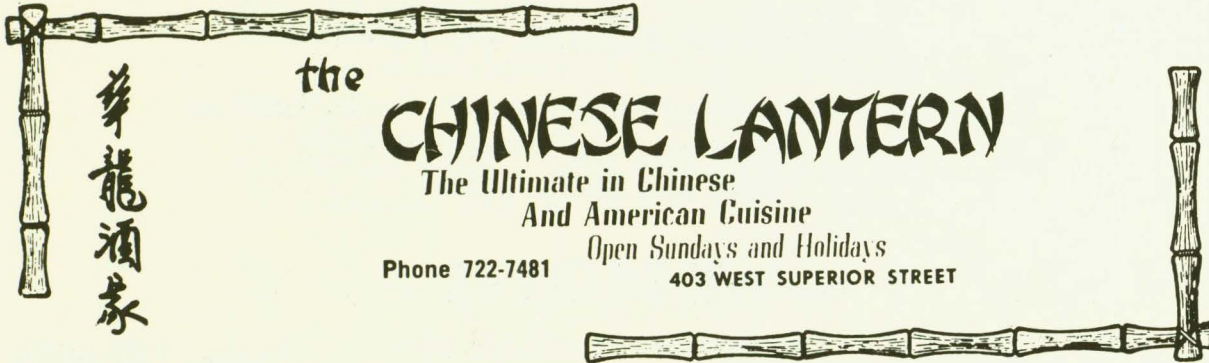
St. John's at Gustavus  
 Concordia at St. Thomas  
 Macalester at Hamline

March 3

Macalester at Augsburg  
 St. Thomas at St. John's

March 6-8

Dist 13 NAIA



華龍酒家

the

## CHINESE LANTERN

The Ultimate in Chinese  
 And American Cuisine

*Open Sundays and Holidays*

Phone 722-7481      403 WEST SUPERIOR STREET

# Before The Game

DINE AT "THE TOP OF THE HARBOR"  
Our Revolving Restuarant

**OR**

VISIT OUR "VIKING" ROOM  
For a "Pre-Game Buffet" \$2.25

# After The Game

STOP BY "THE VIKING" ROOM  
For our Special "Brunch" \$2.25

ENJOY YOUR FAVORITE BEVERAGE  
in the "WHALE BACK" Room  
Dancing and Entertainment



## ANY TIME

Stay at the Beautiful NEW RADISON DULUTH - Luxurious  
Accomodations - Economical Rates - Free Parking --Heated,  
year round Pool - Colored T.V. - Sports Headquarters - Only  
Two Blocks from the ARENA AUDITORIUM .

Call our Sales Office for Information concerning ...

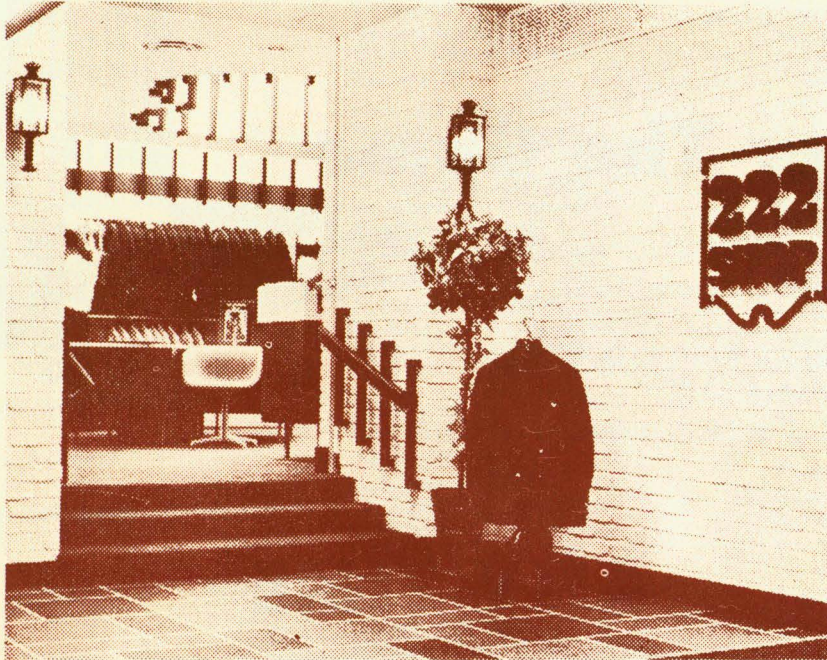
Our "HOCKEY WEEK END" PACKAGE PLAN  
Room Reservations and Dinner Reservations

LET US PICK UP YOUR HOCKEY TICKETS FOR YOU

## radisson duluth

505 W. Superior **HOTEL**

**727-8981**



## Gateway to Fashion

The Northwest's Newest and Smartest Shop For  
Style Minded Men —

Your Exclusive Playboy Man On Campus Fashion  
Approved Style Center In The Twin Ports

*Livingston's*  
**BIG DULUTH**

222 West Superior St.

Phone: 722-5526