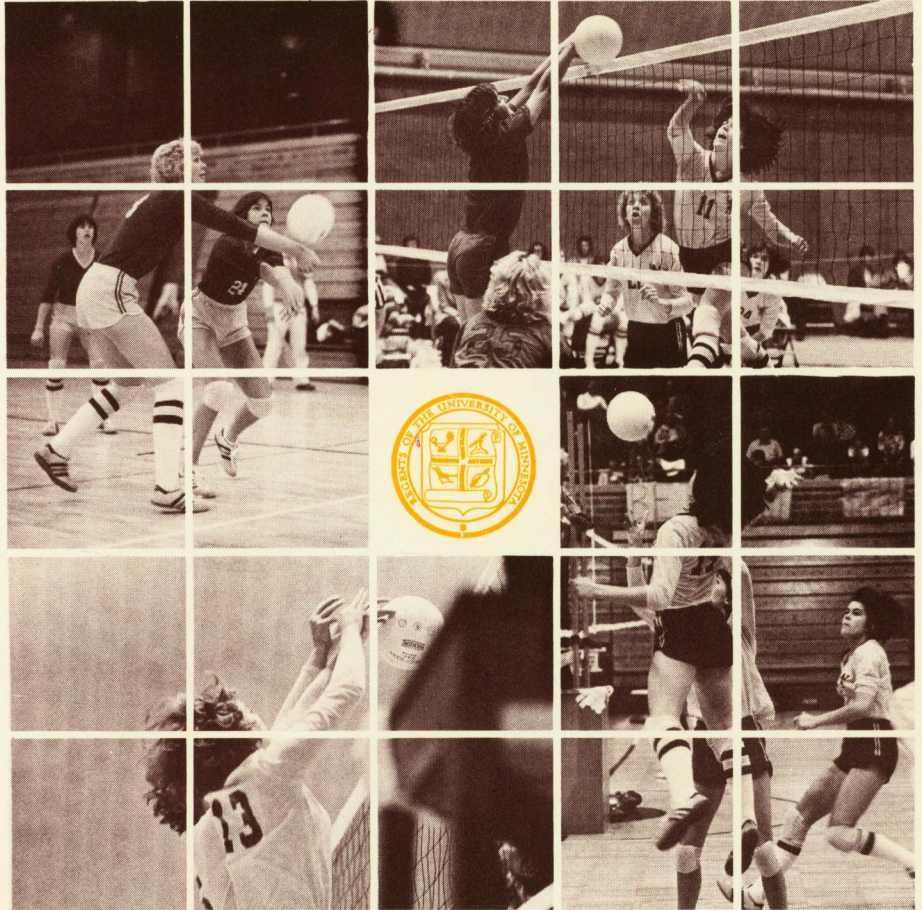


UMD



VOLLEYBALL

1980 OFFICIAL MEDIA GUIDE

UNIVERSITY OF MINNESOTA, DULUTH

MINNESOTA-DULUTH ATHLETIC DIRECTORY
 (218-726-8168)

Athletic Director / Ralph Romano	726-8168
Assistant Athletic Director / Bruce McLeod	726-8169
Women's Athletic Coordinator / Linda Larson	726-7230
Baseball Coach / Scott Hanna	726-7967
Basketball Coach (men) / George Fisher	726-8189
Basketball Coach (women) / Donna Statzell	726-7968
Cross Country Coach (men & women) / Eleanor Rynda	726-8192
Equipment Manager / Scott Hanna	726-7596
Football Coach / Jim Malosky	726-7121
Golf Coach / George Fisher	726-8189
Hockey Coach / Gus Hendrickson	726-8195
Skiing Coach (men & women) / Gary Larson	726-8168
Softball Coach / Bill Bailey	726-8168
Sports Information Director / Jeff Mordhorst	726-8191
Swimming Coach (men & women) / Harry Krampf ..	726-7503
Tennis Coach (men) / Don Roach	726-8276
Tennis Coach (women) / Jean Berg	726-8168
Track & Field Coach (men & women) / Eleanor Rynda	726-8192
Trainer / Don Roach	726-8276
Volleyball Coach / Linda Larson	726-7230
Wrestling Coach / Neil Ladsten	726-8534

WHERE TO FIND IT

Coaching Profile	2
Facts about Minnesota-Duluth	1
NSC Standings, 1979	7
Outlook, 1980	3
Player Profile	5-6
Results, 1979	8
Roster	4
Schedule, 1980	Back Cover
Staff Director	Inside Front Cover
University Profile	Inside Back Cover

The University of Minnesota is an equal opportunity employer and educator.



FACTS ABOUT MINNESOTA-DULUTH

Location / Duluth, Minnesota 55812

Founded / 1947

Enrollment / 7,100

Provost / Dr. Robert Heller

Nickname / Bulldogs

Colors / Maroon and Gold

Affiliation / MAIAW and AIAW Division II

Conference / Northern Sun

Playing Facility / UMD Physical Education Building

Athletic Director / Ralph Romano

Women's Coordinator / Linda Larson

Head Coach / Linda Larson

Assistant Coach / Michele Tierney

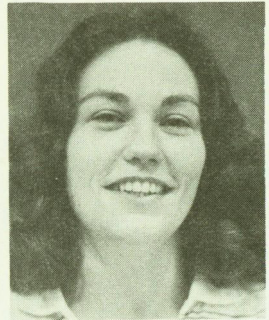
1979 Record / 43-7

1979 NSC Record / 7-0

Sports Information Director / Jeff Mordhorst (218-726-8191)

Linda Larson

**Head Coach
Women's Athletic Coordinator**



Linda Larson was appointed head volleyball coach in 1975 at the University of Minnesota-Duluth. Her duties also include women's athletic coordinator at the University.

Larson, a native of Chicago, IL, received her bachelor's degree from Northeastern Illinois University and her M.A. from Ball State University in 1972. Prior to her appointment at UMD, she coached volleyball, basketball, track and field and softball at Culver Military Academy, IN.

As women's volleyball coach, Larson has compiled a sparkling career coaching mark of 189-31 at UMD and has guided the Bulldogs to two AIAW national championships. She has also coached women's basketball at Minnesota-Duluth, holding a 63-48 record over four seasons, along with softball.

LARSON'S RECORD AT UMD

Year	Overall			Conference			RANK
	W	L	PCT	W	L	PCT	
1976	28	12	.700				
1977	59	6	.908				
1978	59	6	.908				
1979	43	7	.860	7	0	1.000	1st
Career Total	189	31	.859	7	0	1.000	

Michele Tierney — Assistant Coach

Michele Tierney begins her third year as assistant volleyball coach at Minnesota-Duluth. She had a highly successful playing career with the Bulldogs, gaining four varsity letters and co-captaining UMD to the 1977 AIAW national championships.

She is a 1978 graduate of Minnesota-Duluth and her main coaching responsibilities lie with the development of Bulldog setters.

1980 OUTLOOK

University of Minnesota-Duluth fortunes look bright on the volleyball court in 1980 after the Bulldogs captured tenth place in the AIAW Division II national championships last year. Minnesota-Duluth lost only one regular from last season, graduate Pam Klein, and returns a solid nucleus of eight veteran starters.

Head coach Linda Larson guided the Bulldogs to a 43-7 record and a 7-0 Northern Sun Conference mark, giving UMD the initial volleyball title in the newly formed league. Minnesota-Duluth won three individual tournament titles, the MAIAW championship and the AIAW Region 6 crown enroute to its second national tournament appearance in three years.

OFFENSIVE OUTLOOK

Experience in running UMD's multiple offense will be a big key as the season starts. The Bulldogs will need to find a replacement for Klein, a middle hitter and blocker, but the remainder of the lineup should be solid. Sue Johnson, who will captain the 1980 Bulldog team, returns as one of the top setters in the state while senior Jayne Mackley and junior Anne Schik are back as the top outside players at UMD.

DEFENSIVE OUTLOOK

The Bulldog defensive attack should be at its strongest with all regulars back. Passing is definitely UMD's best asset going into the season, along with the quickness of back row players Beth McCleary and Sue Sajevic. Mackley, used mainly for setting and blocking, is also an excellent back row player.

Although Minnesota-Duluth lacks a lineup of players with height, Larson points out that its lack is made up, generally, with quicker players that have good jumping ability for their size.

BULLDOG ROSTER

No.	Name	Ht.	Yr.	Hometown (High School)
10	Anne Schik	5-7	Jr.	New Hope (Cooper)
11	Beth McCleary	5-7	Sr.	Aitkin
14	Cindy Frayseth	5-4	Jr.	Crystal (Cooper)
15	Sue Johnson	5-5	Jr.	St. Paul (Ramsey)
22	Sue Sajevic	5-4	So.	St. Paul (Johnson)
23	Jayne Mackley	6-1	Sr.	Hibbing
31	Becky Geiselman	5-7	So.	Hibbing
33	Heather Nelson	5-11	So.	Iron (Cherry)
	Kelly Bauer	5-6	Fr.	Lakeville
	Cindy Doege	5-9	Jr.	Forest Lake (Vermilion JC)
	Lynn Morris	6-0	Fr.	Plymouth (Armstrong)
	Diane Ruhl	5-9	Fr.	Hopkins (Eisenhower)
	Ronalee Vanderwaal	5-5	Fr.	Albert Lea

THE ROAD TO NATIONALS

MAIAW Championships

UMD over Bemidji State 13-15, 15-9, 15-9

UMD over St. Cloud State 15-4, 13-15, 15-11

UMD over Bemidji State 16-14, 15-13, 15-4

AIAW Region 6 Championships

UMD over Northern Iowa 7-15, 15-13, 16-14

Northwest Missouri over UMD 13-15, 15-3, 15-2

Missouri Western over UMD 15-5, 18-16

UMD over Kearney State 15-9, 15-4

UMD over St. Mary's of the Plains 15-6, 15-3

UMD over Nebraska-Omaha 15-5, 19-17

UMD over Kearney State 4-15, 15-13, 15-7, 15-5

UMD over Missouri Western 15-7, 15-5, 9-15, 6-15, 15-8

AIAW National Championships

UMD over Missouri Western 15-9, 15-4

Hawaii-Hilo over UMD 15-8, 15-6

Lewis University over UMD 15-9, 15-6

PLAYER PROFILE

CINDY FRAYSETH 5'4" 130 Jr. Crystal, Minnesota

Frayseth was voted "most inspirational player" on the 1979 UMD team . . . Is a hard worker and excellent leader . . . Played back row in 1979 . . . Good passer and consistent server . . . Prepped by Lynn Spence at Cooper Senior High School in New Hope and voted Outstanding Senior Athlete in 1978 . . . Captained volleyball team to Lake Conference championship while competing in basketball and track, too . . . Participates in basketball and softball at UMD . . . Camping is her hobby . . . Has 3 brothers and 1 sister . . . Daughter of Mr. Robert Frayseth . . . Born 3/1/60 in Robbinsdale . . . Majoring in engineering.

BECKY GEISELMAN 5'7" 130 So. Hibbing, Minnesota

Gained valuable experience as a freshman as a backup setter in 1979, Geiselman has good skills as a hitter and server . . . Has excellent hands for setting . . . Won four varsity letters at Hibbing High School in volleyball and softball . . . Coached by Gail Nucesch . . . Her high school team posted a 28-2 record as a senior . . . Enjoys camping and skiing . . . Has 2 brothers . . . Parents are Mr. and Mrs. Patrick Geiselman . . . Born 12/19/60 in Hibbing . . . Business major.

SUE JOHNSON 5'4" 125 Jr. St. Paul, Minnesota

Johnson will captain the 1980 Bulldog team after gaining most valuable player honors for UMD last season . . . Hard worker and possesses good leadership qualities as a setter . . . Considered one of the top setters among MAIAW Division II schools in Minnesota . . . Attended Alexander Ramsey High School in Roseville . . . Prepped by Willette Brown, she won her school's senior athlete award while gaining all-conference in volleyball, basketball and softball . . . Hobbies include traveling, canoeing and other outside activities . . . Has 2 sisters . . . Parents are Mr. and Mrs. Orville M. Johnson . . . Born 1/16/60 in St. Paul . . . Mechanical engineering major.

JAYNE MACKLEY 6'1" 155 Sr. Hibbing, Minnesota

A consistent server and blocker, Mackley is also a strong back row player for UMD . . . Works hard on jumping and placement hitting . . . Prepped by Gail Nucesch at Hibbing High School, she helped guide her club to a 22-4 record as a senior . . . Also competed in basketball and track at Hibbing . . . Participates in basketball and softball at UMD . . . Camping and skiing are her hobbies . . . Has 3 brothers and 5 sisters . . . Parents are Mr. and Mrs. Oliver Mackley . . . Born 10/9/58 in Hibbing . . . Physical education major.

BETH McCLEARY 5'7" 135 Sr. Aitkin, Minnesota

Scrappy player and good court sense . . . McCleary is an excellent back row player and middle blocker and hitter . . . Coached by Maude Klingelhofer at Aitkin High School where she was all-conference in volleyball and basketball as a junior and senior and was athlete of the year in 1977 . . . Honors student . . . Competes in basketball and track at UMD . . . Cooking and reading are pastimes . . . Has 1 brother and 1 sister . . . Parents are Mr. and Mrs. Bob McCleary . . . Born 7/28/59 in Brainerd . . . Life science and physical education major.

HEATHER NELSON 5'11" 145 So. Cherry, Minnesota

Strongest attribute in blocking . . . Showed a lot of poise as a freshman in pressure situations . . . Was co-recipient of the UMD outstanding freshman volleyball player in 1979 . . . Played for Lynette Kaminen at Cherry High School in Iron . . . Won 9 varsity letters as a prep in volleyball, basketball and track . . . Plays basketball at UMD . . . Has 2 brothers . . . Parents are Mr. and Mrs. Dale Nelson of Iron . . . Born 10/19/61 in Virginia . . . Majoring in general studies.

SUE SAJEVIC 5'4" 125 Jr. New Hope, Minnesota

Small player who plays very tall, Sajevic is a "sparkplug" with UMD and has good court sense . . . Back row play is her strong suit . . . voted outstanding freshman in 1979 with Heather Nelson . . . Coached by Marsha Hultstrand at Johnson High School in St. Paul . . . Gained all-conference, all-city and all-state honors while being named St. Paul's student athlete of the year in 1978-79 . . . Also plays basketball . . . Has 4 brothers and 1 sister . . . Parents are Mr. and Mrs. Peter Sajevic . . . Born 4/25/61 in St. Paul . . . Physical education and health major.

ANNE SCHIK 5'7" 125 Jr. New Hope, Minnesota

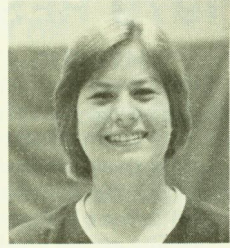
Has received two seasons of experience with UMD and will be a key to the Bulldogs' success in 1980 . . . Has excellent quickness and jumping ability . . . Strong outside hitter and blocker . . . Played for Lynn Spence at Cooper High School, winning 7 varsity letters in three sports . . . Was all-conference in volleyball and member of the National Honor Society . . . Was outstanding freshman for UMD in 1978 . . . Has 3 sisters . . . Parents are Mr. and Mrs. John Schik . . . Born 6/24/60 in Minneapolis . . . Business and accounting major.



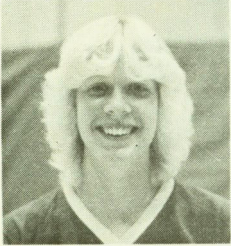
Cindy Frayseth



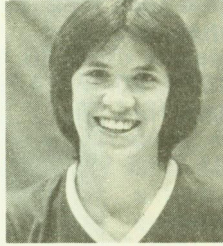
Becky Geiselman



Sue Johnson



Jayne Mackley



Beth McCleary



Heather Nelson



Sue Sajevic



Anne Schik

**FINAL 1979 NORTHERN SUN
CONFERENCE STANDINGS**

Team	W	L	Pct.
Minnesota-Duluth	7	0	1.000
Bemidji State	5	2	.714
St. Cloud State	5	2	.714
Mankato State	5	2	.714
Winona State	3	4	.429
Moorhead State	2	5	.286
Southwest State	1	6	.167
Minnesota-Morris	0	7	.000

1979 RESULTS (Won 43, Lost 7)

- *UMD over Winona State 15-6, 15-4, 15-10
- *UMD over Moorhead State 15-8, 15-4, 15-5
- UMD over Wisconsin-Superior 15-5, 15-7
- *UMD over Bemidji State 16-4, 11-15, 9-15, 15-7, 15-7
- *UMD over Minnesota-Morris 15-10, 15-11, 15-7
- UMD over Wisconsin-Superior 9-15, 15-6, 15-8
- UMD over St. Scholastica 15-7, 15-5
- *UMD over Southwest State 15-6, 15-13, 15-12
- *UMD over Mankato State 15-2, 15-2, 15-5
- UMD over St. Scholastica 15-5, 15-6
- *UMD over St. Cloud State 8-15, 15-13, 14-16, 15-3, 15-9
- UMD over Augsburg 15-12, 20-18, 14-16, 15-4
- UMD over Mankato State 15-4, 15-13
- UMD over Carleton 15-13, 15-10
- UMD over Northland 15-2, 15-11, 15-4

St. Cloud State Invitational

- UMD over Carleton 15-4, 15-12
- UMD over Mankato State 13-15, 15-4, 15-6
- UMD over North Dakota State 17-15, 15-9

Tri-College Invitational

- Augsburg over UMD 6-15, 15-3, 15-12
- UMD over Moorhead State 15-4, 15-9
- UMD over Bemidji State 15-5, 10-15, 16-14
- UMD over Concordia-Moorhead 15-7, 16-14
- UMD over St. Catherine's 15-3, 15-4
- UMD over Bemidji State 15-9, 15-8

UMD Invitational

- UMD over Concordia-Moorhead 15-2, 15-7
- UMD over Gustavus Adolphus 15-10, 15-12
- UMD over St. Catherine's 16-14, 15-9
- UMD over Mankato State 15-10, 13-15, 15-10
- UMD over Bemidji State 15-9, 15-11
- UMD over Mankato State 15-8, 15-12, 15-7

Gopher Invitational

- UMD over Iowa State 15-9, 8-15, 15-11
- UMD over Minnesota JV 15-6, 15-0
- St. Cloud State over UMD 15-11, 10-15, 15-7
- UMD over North Dakota State 15-1, 15-6
- Minnesota over UMD 15-5, 15-12
- UMD over Iowa 13-15, 15-11, 15-3, 15-7

*Northern Sun Conference Games



UNIVERSITY OF MINNESOTA-DULUTH

One of the five campuses in the state-wide University of Minnesota system, UMD enrolls over 7,000 undergraduate and graduate students with academic offerings in liberal arts, business, fine arts, education, social work and basic science in medicine.

The UMD campus represents a \$50 million investment in education facilities. One unique feature of the campus is its interconnected buildings, allowing students to move to classes without walking outside. The physical plant is also constructed to meet the convenience of handicapped students.

UMD is firmly committed to undergraduate education and prides itself on the fact that its size allows quality programs without depriving students of their individuality. The 400 full-time and part-time faculty are dedicated teachers, yet maintain active research interests.

Founded as Duluth Normal School at the turn of the century, it progressed to Duluth State Teachers College in 1930. In 1947, the institution of higher education became part of the University of Minnesota system.

Dr. Robert Heller became provost at Minnesota-Duluth in 1977. Since his appointment, he has provided the leadership and constant improvement to make the University of Minnesota-Duluth one of the finest institutions of higher education in the Upper Midwest.

1980 BULLDOG VOLLEYBALL

Sept. 12-13	at Northern Michigan Invitational	All Day
Sept. 19-20	at St. Cloud State Invitational	All Day
Sept. 26-27	at Tri-State Invitational	1:30 p.m.
Sept. 29	ST. SCHOLASTICA	6:00 p.m.
Oct. 1	WISCONSIN-SUPERIOR	6:00 p.m.
Oct. 3	at Mankato State*	6:00 p.m.
Oct. 4	at Minnesota-Morris*	1:00 p.m.
Oct. 7	at St. Cloud State*	6:00 p.m.
Oct. 9	Alabama at Minneapolis	6:00 p.m.
Oct. 10	AUGSBURG	6:00 p.m.
Oct. 13	at St. Scholastica	6:00 p.m.
Oct. 14	at Wisconsin-Superior/ Wisconsin-Eau Claire	6:30 p.m.
Oct. 22	BEMIDJI STATE*	6:00 p.m.
Oct. 24	at Winona State*	6:00 p.m.
Oct. 25	at Winona State Invitational	9:00 a.m.
Oct. 28	SOUTHWEST STATE*/NORTHLAND	6:00 p.m.
Oct. 30	MOORHEAD STATE*	6:00 p.m.
Oct. 31- Nov. 1	UMD INVITATIONAL	10:00 a.m.
Nov. 7-8	MAIAW Championships	All Day
Nov. 20-22	AIAW Region Six Championships	All Day
Dec. 11-13	AIAW National Championships	All Day

*Northern Sun Conference Games
 Capitals indicate game at UMD