

University of Minnesota , Duluth

HOCKEY

1971 - 1972



*Official Program*

Be The Center of Attention  
Choose Your Wardrobe at  
McGregor & Soderstrom's

Where Men's Fashion is Happening!



Complete selection of Men's suits' Sportcoats, slacks and accessories featuring famous name brand merchandise.

Sport and casual wear that not only look good but are comfortable and easy to care for.



219 W. Superior St.  
DULUTH, MINN.

722-1775

OPEN 9-9 Mon.  
9-5:15 Tues.-Sat.

# University of Minnesota, Duluth

## Table of Contents

- The University .....4-5
- The Records.....7-9
- Coaching Staff.....10-11
- U.S. Hockey Hall of Fame.....13
- Athletic Department.....14-15
- UMD Roster.....17
- Hockey Statistics.....19
- UMD Numerical Lineup.....20
- Opponent's Numerical Lineup.....21
- This Week's Game.....22
- Opponent's Roster.....24
- Northstar Scholarship.....27
- Introducing the Bulldogs.....29-35
- MIAC Composite Schedule.....37-38

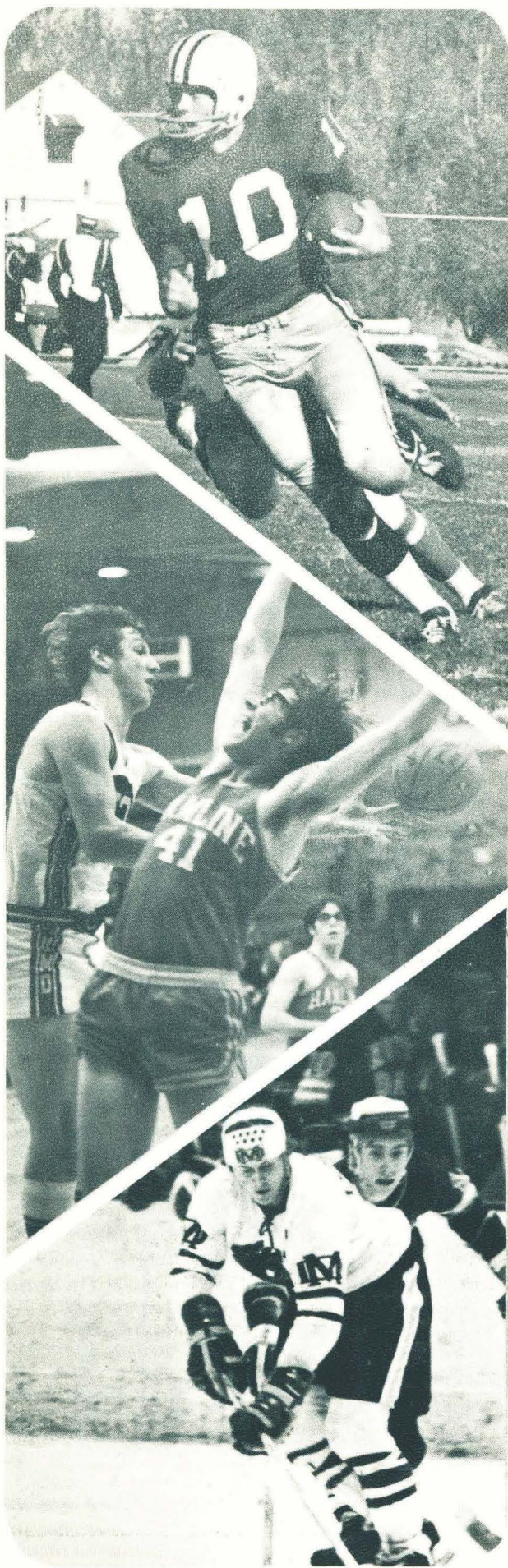
PUBLISHED BY THE UNIVERSITY OF MINNESOTA,  
DULUTH ATHLETIC DEPARTMENT

Ralph Romano ..... Athletic Director

Bruce McLeod ..... Athletic Business Manager

Ken Moran ..... Photographer

Price 35¢ (Est. 34¢, State Tax 1¢)



## Security Jewelers

307 West Superior Street

727-1301



featuring

KEEPSAKE diamond rings

Largest Selection of  
Trophies in the City

— Free Engraving —

We belong to the  
Student Discount Program

## Al & Lou's Conoco Service

U-HAUL TRAILER RENTALS

AAA—EMERGENCY SERVICE

1624 Woodland Avenue

Phone: 724-0102

ALWAYS SOMETHING NEW:  
New Styles . . . New Fabrics  
New Shapes . . .

The most versatile fashions you can own,  
whether your career is college, school, home, of-  
fice or travel!

Junior Sizes 3 to 15 — Misses' Sizes 8 to 20

## Westman's Apparel

Kenwood Shopping Center  
Duluth, Minnesota

Shop Open Friday Nights Till 9:00 P. M.  
Daily 9:00 A.M. Till 5:30 P.M.



**SOCK IT AWAY**

Take Home More For A  
Whole Lot Less.



**Join The Red Owl Price Rebellion**

Now 5 locations in the Duluth-Superior area to  
serve you better.

1316 Arrowhead Rd.      125 W. First St.  
5536 Grand Ave.      5928 E. Superior St.  
202 Belknap St. - Superior, Wisconsin

**GOOD LUCK BULLDOGS**

## THE UNIVERSITY

The University of Minnesota, Duluth will celebrate its 25th anniversary on July 1, 1972.

The event will mark a quarter century of growth for a community campus which ranks among the most unique in the nation.

Its students and faculty have distinguished themselves throughout the state, nation and world. The campus, itself, has become the hub of much of the educational and cultural activity of the city and region.



It was on July 1, 1947 that UMD, following approval by the Minnesota Legislature, became a campus of the University of Minnesota. Its predecessors at the old campus a half mile away were Duluth State Teachers College (1921-1947) and Duluth State Normal School (1902-1921).

UMD has been a campus "on the move" since the first spade of earth was dug in the new, 160 acre site overlooking Lake Superior. Over the years, the land had been occupied by wildlife and Indian families, and later children chasing rabbits, flying kites or picking strawberries.

The Science Building, first structure on campus, was opened to its first classes in the fall of 1950. Since then, 15 major buildings have been completed bringing the total campus worth to \$40 million.

There were 1,432 students enrolled at UMD in 1947. The current enrollment of almost 6,000 represents an increase of more than 300 per cent for a campus which originally was planned for only 3,500 students! Another 4,000 students, including many adults from the city and region, attend two five-week terms of Summer Session and General Extension Division evening classes.

In 1947, only two degrees and a two year diploma were offered. Now UMD students can choose from the Associate in Arts (two years), Bachelor of Arts, Bachelor of Science, Bachelor of Business Administration, Bachelor of Accounting, seven Master of Arts and six Master of Science degrees, plus a specialist program in school administration.

UMD students can select from 1,400 courses with 55 majors in 36 fields of study, plus two, three and four year preparatory programs in 19 pre-professional fields and Air Force ROTC.

In addition to the regular academic programs, a number of specialized services now are offered

by UMD departments. Included are the Reading Skills Clinic, the Student Tutorial Project, Speech and Hearing Clinic, Office of Educational Media, the Computer Center, and business and social research offices.

Symbolic of coming academic growth are the three new professional programs to be initiated in the fall of 1972. That is when the first students will be enrolled in a two-year UMD Medical School, a UMD Graduate School of Social Work, and a UMD Dental Hygiene Program.

The UMD Campus Assembly made up of both faculty and students last year became the major legislative body on campus, the first time students directly participated with voting powers in setting policy.

UMD's growth has had a marked effect on the city of Duluth and the region. More than 250 public events on campus each year bring thousands of visitors to the Tweed Museum of Art, the Alworth Planetarium, the University Artists Series, varsity games, lectures, band, orchestra and choral concerts, theatre productions, workshops and seminars.

UMD faculty actively participate in community programs such as the Model Cities project, planning and construction of the Duluth Arena-Auditorium, business and medical research, and in projects of scores of social and civic organizations.



"With the continued support of the community, Minnesota Legislature and the University Regents, UMD's next 25 years promise to be marked by growth we cannot yet imagine," Provost Raymond W. Darland declares.

"I believe UMD has fulfilled the early expectations of the community and legislative leaders who worked so hard for so long to give it University status. I am confident that UMD's faculty, students and administrators will join in planning and executing a bold program of higher education which will win new plaudits for UMD."

COMPLIMENTS . . .

## ECONOMY MOTORS

NORTH COUNTRY DISTRIBUTOR OF  
GMC AND PETERBILT TRUCKS

3102 West 1st St.

628-1044

Compliments of . . .

## STEWART'S WHEEL GOODS STORE

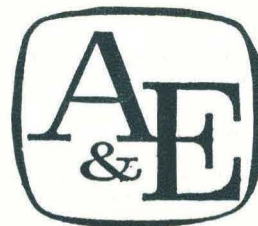


HOCKEY EQUIPMENT

CCM—Cooper-Weeks —Northland—Koho  
Louisville—Hyde—Bauer—Riedell  
Professional Skate Sharpening

1502 EAST SUPERIOR ST.

724-5101



**SUPPLY  
COMPANY**

### GO— BULLDOGS!

Tom Nelson  
Tom Gandsey  
Al Lindblad  
Don Ehle  
Roy Holt  
Jim Ellingsen  
Gordy Mehling  
Bernie Selin  
Terry Kirsch  
Jim Gustafson

### Everything in Home Appliances Television and Stereo

- Westinghouse
- Frigidaire
- Maytag
- Hoover
- RCA

## DAUGHERTY

516 EAST FOURTH STREET  
DULUTH, MINNESOTA 55805

Phone: Hardware—722-3925  
Appliances—722-3971

WIN WITH  
BULLDOGS

WIN WITH  
SHELL

**LOWELL'S**

60th AVE. E.  
& SUPERIOR ST.

**WALLY'S**

24-HOUR SERVICE  
12th AVE. E. & SUP. ST.



**BOB'S**

27th AVE. W.  
& MICH. ST.

**FRED'S**

WEST DULUTH  
57th and GRAND

DULUTH ————— SUPERIOR

YOUR LOCALLY OWNED OIL CO.

**SULLIVAN OIL CO.**

# THE RECORDS

## INDIVIDUALS—CAREER

Most Goals	75—Keith Christiansen (63-67)
Most Goals (defenseman)	25—Bobby Hill (62-66)
Most Assists	121—Christiansen (63-67)
Most Assists (defenseman)	65—Hill (62-66)
Most Total Points	196—Christiansen (63-67)
Most Total points (defenseman)	90—Hill (62-66)
Most Penalty Minutes	231—Christiansen (63-67)
Fewest Penalty Minutes	8—Dave Stepnes (61-64)

## INDIVIDUALS—SEASON

Most Goals	26—Walt Ledingham (70-71)
Most Goals (defenseman)	9—Hill (64-65)
Most Assists	39—Christiansen (66-67)
Most Total Points	62—Christiansen (66-67)
Most Consecutive Points	9—Christiansen vs. Colo.
Most Penalty Minutes	103 Pokey Trachsel (70-71)
Fewest Penalty Minutes	0—Larry Krawchuk (68-69) 0—Lynn Ellingson (69-70)

## GOALTENDING

Lowest Ave. Goals Per Game	
Career	4.1—Bill Halbrehder (61-65)
Season	3.6—Halbrehder (62-63)
Highest Ave. Goals Per Game	
Career	4.9—Dave LeBlanc (65-68)
Season	5.8—Jerry Wherley (61-62)
Most Saves, Career	2,285—LeBlanc (65-68)
Most Saves, Season	977—LeBlanc (66-67)
Most Goals Allowed, Career	312—LeBlanc (65-68)
Most Goals Allowed, Season	125—LeBlanc (66-67)
Most Goals Allowed, Game	12—Wherley vs. Mich. Tech (61-62)
Highest Ave. Saves Per Game, Career	34.9—LeBlanc (65-68)
Highest Ave. Saves Per Game, Season	38.2—LeBlanc (66-67)
Best Pct. of Saves, Career	89.9—Halbrehder (61-65)
Best Pct. of Saves, Season	90.1—Halbrehder (64-65)
Most Shutouts, season-career	1—Halbrehder (61-62 & 63-64) 1—Halbreder (62-62 & 63-64) 1—Ron Hill (64-65) 1—Glenn Resch (69-70)

## INDIVIDUALS—GAME

Most Goals	4—Walt Ledingham vs. Wis. (12-15-70)
	4—Pat Francisco vs. Brown (12-17-66)
Most Assists	6—Christiansen vs. Minnesota (11-19-66)
Most Total Points	6—Christiansen vs. Minnesota (11-19-66)
Most Penalty Minutes	20—Francisco vs. Minnesota (1-20-67)

## LEADING SCORER BY SEASON

	Games	Goals	Assists	TP	
1955-56	Harvey Flaman	23	30	24	54
1956-57	Flaman	21	24	32	56
1957-58	Elmer Schwartz	21	14	31	45
1958-59	Mike O'Handley	19	18	7	25
1959-60	O'Handley	18	22	14	36
1961-62	Mike Mithrush	22	8	15	23
1962-63	Bill Lenardon	24	9	17	26
1963-64	Keith Christiansen	24	16	20	36
1964-65	Christiansen	27	23	35	58
1965-66	Christiansen	23	13	27	40
1966-67	Christiansen	28	23	39	62
1967-68	Ron Busniuk	27	10	10	20
1968-69	Busniuk	29	7	20	27
1969-70	Murray Keogan	28	21	19	40
1970-71	Walt Ledingham	33	26	28	54

## MOST VALUABLE PLAYERS

1956-57	Harvey Flaman—Regina, Sask.
1957-58	Jerry Kleisinger—Regina, Sask.
1958-59	Ron Pretlac—Fort William, Ont.
1959-60	Mike Haley—Duluth
1960-61	Bill Lenardon—Mike Mithrush—Fort William, Ont.
1961-62	John McCormack—Fort William, Ont.
1962-63	Lenardon
1963-64	Keith Christiansen—Fort Frances, Ont.
1964-65	Christiansen
1965-66	Bob Hill—Duluth
1966-67	Christiansen
1967-68	Rick Newell—Winnipeg
1968-69	Ron Busniuk—Fort William, Ont.
1969-70	Busniuk
1970-71	Walt Ledingham—Weyburn, Sask.

## TEAM CAPTAINS

1956-57	Harvey Flaman—Regina, Sask.
1957-58	Flaman
1958-59	Larry Cronkite—International Falls
1959-60	Ron Pretlac—Fort William, Ont.
1960-61	Mike Haley—Duluth
1961-62	Bill Lenardon—Fort William, Ont.
1962-63	Lenardon
1963-64	Bill McGann—Duluth
1964-65	Owen Rogers—Frenchman Butte, Sask.
1965-66	Rogers
1966-67	Keith Christiansen—Fort Frances
1967-68	John McKay—Duluth
1968-69	Bruce McLeod, Fort Frances & Rick Newell, Winnipeg
1969-70	Ron Busniuk—Fort William
1970-71	Glenn Resch—Regina

509 EAST SUPERIOR STREET

NIGHTLY PIANO BAR ENTERTAINMENT

World Renowned Murphy's Lounge

AFTER THE GAME MEET YOUR FRIENDS AT

# HUNGRY? COME ON IN!

ENJOY THE TASTIEST DRIVE-IN FOOD YOU CAN BUY —  
ANYWHERE . . . AT ANY PRICE!

Try Our Famous Char's

- ONION RINGS
- CHUCK WAGONS
- CHEESE BURGERS
- BIG BOOMER BURGER
- FISHWICH
- CALIFORNIAS

## LONDON INN — 1623 LONDON ROAD

### PANTOUR TRAVEL SERVICE

SINCE 1946

Complete Travel Arrangements Anywhere in  
the World made for you by our experienced  
Travel Consultants without service charge.

**American Express  
Representative**

**722-2891**

314 W. Superior St.  
Duluth, Minnesota

AIR . SHIP . TOURS . CRUISES . RAIL  
BUS . HOTELS . GROUPS

### Strommen and Associates



Dave Lindstrom



John Yount



Roger Hanson

**Consultants**

**CENTRAL LIFE ASSURANCE CO.**

"ONE OF THE BEST"

Three Local Sportsmen in Business  
To Serve You!

- Life Insurance
- Pension and Profit Sharing
- Disability Insurance
- Business Insurance

**928 E 4th St**

**724-8831**



**TEAM—GAME**

Best Goals Per Game Ave. .... 5.39 (1964-65; 14-12-1)  
 Worst Goals Per Game Ave. .... 1.79 (1967-68; 5-23-0)  
 Most Wins ..... 16 (1970-71)  
 Most Wins in Row ..... 4 (1961-62 & 1966-67)  
 Most Losses ..... 23 (1967-68 & 1968-69)  
 Most Losses In Row ..... 11 (1967-68)  
 Most Goals Scored ..... 147 (1970-71)  
 Most Assists ..... 205 (1970-71)  
 Most Total Points ..... 352 (1970-71)  
 Fewest Goals Allowed ..... 95 (1963-64)  
 Most Goals Allowed ..... 146 (1967-68, 68-69 & 70-71)  
 Lowest Goals Per Game ..... 3.8 (1963-64)  
 Highest Ave. Goals Scored Per Game ..... 5.6 (1963-64)  
 Most Shutouts ..... 1 (1962-63; 1963-64; 1964-65)  
 Most Times Shutout ..... 2 (1967-68)  
 Most Number of Penalties ..... 275 (1970-71)  
 Most Penalty Minutes ..... 723 (1970-71)  
 Most Goals ..... 15 vs. St. Thomas (1-8-63)  
 Biggest Victory Margin ..... 15-0 vs. St. Thomas (1-8-63)  
 Most Assists ..... 13 vs. Army (12-29-66)  
 Most Total Points ..... 23 vs. Army (12-29-66)  
 Most Penalty Minutes ..... 53 vs. Minnesota (1-20-67)  
 Most Goals Allowed ..... 12 by Michigan Tech (2-23-62)  
 Most Assists Allowed ..... 18 by Denver (3-5-68)  
 Most Total Points Allowed ..... 29 by Denver (3-5-68)  
 Opponent's Biggest Victory Margin 12-2 vs. Michigan Tech (2-23-62)

**RECORD vs. 1971-72 OPPONENTS**

Colorado College	14	8	1
Denver University	4	25	1
Michigan	4	12	0
Michigan State	10	14	1
Michigan Tech	4	42	2
Minnesota	12	24	1
North Dakota	11	33	0
U.S. Nationals	2	10	0
Wisconsin	4	1	0
Notre Dame	2	0	0
Boston College	0	1	0
U. of Manitoba	7	1	0

**COACHES RECORDS**

	W	L	T
Frank Kovach (1931)	2	5	0
Hank Jensen (1949-51)	13	6	1
Gordon Eddols (1952-54)	21	18	0
Bob Boyat (1955)	9	8	0
John (Connie) Pleban (1956-59)	55	23	5
Ralph Romano (1960-68)	92	120	9
Bill Selman (1968-69)	19	37	1
Terry Shercliffe	16	17	1

**NCAA CHAMPIONS**

- 1948—Michigan 8, Dartmouth 4
- 1949—Boston College 4, Dartmouth 3
- 1950—Colorado College 13, Boston University 4
- 1951—Michigan 7, Brown 1
- 1952—Michigan 4, Colorado College 1
- 1953—Michigan 7, Minnesota 3
- 1954—R.P.I. 5, Minnesota 4 (OT)
- 1955—Michigan 5, Colorado College 3
- 1956—Michigan 7, Michigan Tech 5
- 1957—Colorado College 13, Michigan 6
- 1958—Denver 6, North Dakota 2
- 1959—North Dakota 4, Michigan State 3
- 1960—Denver 5, Michigan Tech 3
- 1961—Denver 12, St. Lawrence 2
- 1962—Michigan Tech 7, Clarkson 1
- 1963—North Dakota 6, Denver 5
- 1964—Michigan 6, Denver 3
- 1965—Michigan Tech 8, Boston College 2
- 1966—Michigan State 6, Clarkson 1
- 1967—Cornell 4, Boston University 1
- 1968—Denver 4, North Dakota 0
- 1969—Denver 4, Cornell 3
- 1970—Cornell 6, Clarkson 4
- 1971—Boston U. 4, Minnesota 2

**1970-71 WCHA ORDER OF FINISH**

	W	L	T	Pct.
Michigan Tech	18	4	0	.818
Denver	15	7	0	.682
Wisconsin	13	9	0	.591
Michigan State	12	10	0	.545
Minnesota	9	12	1	.432
Minnesota, Duluth	10	14	0	.417
North Dakota	10	15	1	.404
Colorado College	7	11	0	.389
Michigan	5	17	0	.227

**1970-71 WCHA TEAM'S SEASON RECORDS**

	W	L	T	Pct
Michigan Tech	25	6	2	.788
Denver	25	10	1	.709
Michigan State	18	12	0	.613
Wisconsin	20	13	1	.603
Minnesota, Duluth	16	17	1	.485
North Dakota	14	17	2	.455
Minnesota	14	17	2	.455
Colorado College	11	17	1	.397
Michigan	9	21	0	.300

**Top Shops**

**Continental Coiffures**

For Continental Flair

Duluth - 4623 E. Sup. St. - 525-5161

Open Tues. & Thurs. Eve.

**Medical Arts Beauty Salon**

Visit Us One Flight Up To Where Women Are Pampered

Open Tues. & Thurs. Evenings

722-1771



VISIT ONE OF US FOR QUALITY SERVICE AT MODERATE PRICES

## **NORM'S RELIABLE**

JEWELRY - GIFTS - CAMERAS

"Sports of All Sorts"

211 West Superior Street  
722-2820

## **Smart Student Shoes** CAMPUS STYLES IN CASUAL, DRESS or BOOTS

FRENCH SHRINER - CROSBY SQUARE  
SEBAGO MOCS - HUSH PUPPIES  
DEXTER and MANY OTHERS

GLEN WELD'S

### **Clark Shoe Co.**

16 No. 1st Ave. West

## **FALK'S WOODLAND PHARMACY**

"IN THE WOODLAND SHOPPING CENTER"

1 Calvary Road 728-4242

Your REXALL Store

"COME AS YOU ARE"

MARVELOUS FOOD  
SPEEDY SERVICE



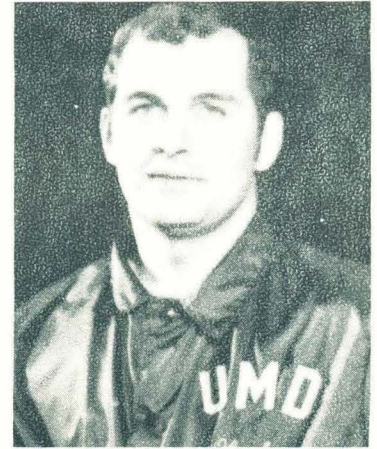
MEDICAL ARTS BLDG.  
DOWNTOWN DULUTH

CHILDREN'S PORTIONS  
OPEN SUNDAYS

Recommended by Roland C. Hill of HILLSWAY

## **HEAD COACH**

TERRY  
SHERCLIFFE



His first year of college coaching behind him, young and enthusiastic Terry Shercliffe has already established himself as one of the bright spots in the college coaching ranks today, having guided last year's young Bulldog squad to 10 victories (16 overall) in the roughest college hockey league in the country.

But Shercliffe has higher aspirations for UMD hockey and he would like nothing better than to reward UMD's loyal supporters with a Western Collegiate Hockey Association (WCHA) championship and a berth in the NCAA tournament.

"The support given me and UMD hockey has just been terrific," Shercliffe said. "I know our players feel the same way and this year we're going to try and give back to the fans some of what they've already given us."

A native of Regina, Sask., Shercliffe was a three-year letterman with the Bulldog hockey team while he attended UMD in pursuit of a B.S. degree in Physical Education. During his senior year, the talented wing served as a co-captain and was later honored with the Outstanding Senior Athlete Award for the 1964-65 season.

Following graduation, Shercliffe moved south to Osseo, Minn. where he lifted the hockey program as head coach and instructed in physical education. Former head coach Ralph Romano, now UMD Athletic Director, lured Shercliffe back to UMD as an assistant coach after two years at Osseo. Shercliffe handled the Bulldog junior-varsity team for four years as well as instructing in the physical education department.

There were many reasons for Shercliffe's promotion to the head coaching job last year but the most noticeable was his tremendous knack to recruit many of the best available players from both the United States and Canada.

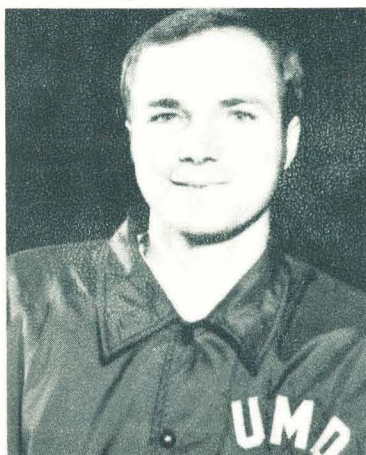
Even as an assistant coach, Shercliffe was put in charge of recruiting and the results have made UMD one of the most popular college institutions in the country today. Last season's attendance of

106,729 indicates its tremendous popularity with the local fans. Even on the road, UMD played to capacity crowds almost everywhere they went.

Shercliffe is also noted for having a unique rapport with his players and the fans. He is forever trying to communicate with as many public sources as possible to keep the fans up-to-date, and this includes many speaking engagements throughout the year to various organizations.

Shercliffe is also a constant worker with youth hockey programs, heading major hockey schools throughout the entire year in an effort to raise the caliber of hockey in the region. He was director of the annual Tommy Williams Summer Hockey School in Duluth and each winter he conducts his own school during Christmas vacation. He has also scheduled several UMD pre-season games, such as this year's Freshman-Varsity and Intra-squad games for the benefit of children.

In addition to his never-ending job of teaching and coaching, Shercliffe saves time for raising three sons: Ryan, Bryce and Scott. Shercliffe is married to the former Wilma Horen, a UMD graduate.



## ASSISTANT COACH

A lot of work and little glory--that's the job of Bruce Rogers, UMD's second-year assistant coach who also is in charge of the junior-varsity team.

The junior-varsity team will be of more importance to UMD hockey this year than ever before because of the abundance of players who tried out for the team. Because a player from the junior-varsity team may be promoted to the varsity at any time during the course of the year, it is Rogers' job to work with each player and try to elevate his caliber to meet WCHA standards.

A native of Frenchman Butte, Sask., Rogers is also a graduate of UMD hockey, having lettered with the Bulldogs as a right wing. Before he came to UMD in 1967, Rogers played Junior A hockey with the Weyburn Red Wings.

Rogers graduated from UMD last June with a degree in geography. He and his wife have established a home in Duluth.

EVERYTHING IN TRAVEL ANYWHERE!

BY EXPERIENCED TRAVEL CONSULTANTS

A World of Experience To Serve You

DOMESTIC • FOREIGN

AIR • STEAMSHIP • TOURS

dial: 727-8456



PALLADIO BLDG.  
DULUTH, MINN.

4th AVE. W. & SUP. ST.  
• PHONE 727-8456

COMPLIMENTS OF . . .

## PLET'S GROCERY

Complete Grocery & Snack Needs  
Only Blocks from the Campus

Open 8 to 10 Daily

1619 Woodland Ave.

724-8525

Your Locally-Owned Linen Supply

## DULUTH LAUNDRY

We Specialize In Cleaning and Repairing

Athletic Uniforms

17 North 20th Avenue West

727-2955

## Fashioned Clothes

that are **Winners** on the **Campus Scene**.

We invite you to shop our store for new styles and values for your needs. We feature nationally advertised lines and aim to please you in every way.

10% discount on items as arranged by Student Association

**FAMOUS**

CLOTHING CO.  
12 East Superior Street

# LAKE-AIRE MOTEL

2416 LONDON ROAD — E. HIWAY 61  
ON LAKE SUPERIOR — DULUTH, MINN.

Duluth Phone 218-724-8513

7 Newly Refurbished Units . . . Air Conditioning . . . TV . . . Room Phones . . . Individual  
Thermostat Hot Water Heat Controls . . . Ceramic Tile Bath & Showers . . . Conference Room  
Accommodates 100 . . . Bottle Shop . . . Continental Breakfast.

Diners Club  
and American  
Express Credit  
Cards Honored

You may call  
toll free  
for reservations  
1-800-437-2035



THIS STORE  
IS DESIGNED  
FOR YOUR  
PLEASURE.

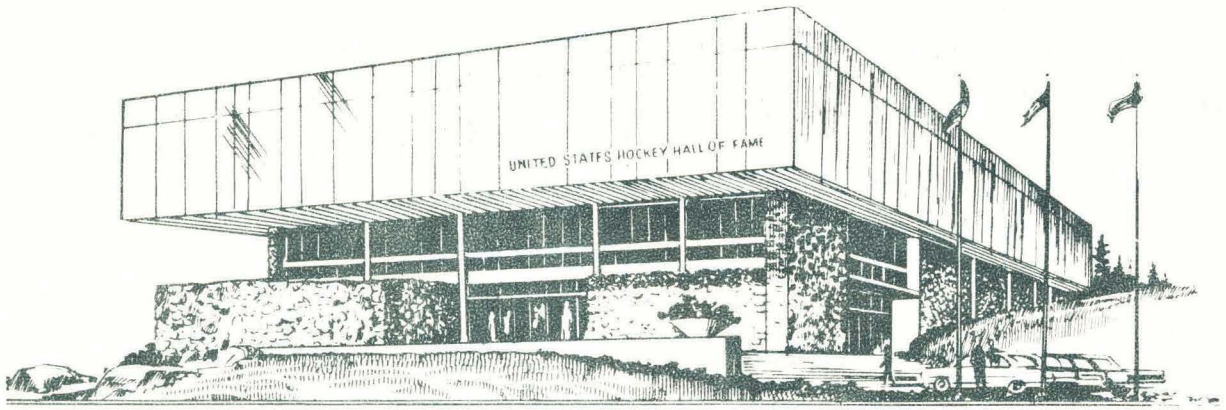
"THE UNUSUAL  
AND RARE  
ARE HERE  
FOR YOU"

## LAKE-AIRE BOTTLE SHOP

2416 LONDON ROAD - 724-8818

We Feature the Most Complete Line of Domestic and Imported Cordials and Liquors

Lake Aire has the Finest of American and European Wine in the Tri-State Area.



## U. S. Hockey Hall of Fame

Cooperstown, Canton, and Springfield all have one thing in common as any sports buff worth his salt knows. These cities are all homes to the Halls of Fame for baseball, pro football, and basketball respectively. And come next June Eveleth expects to join them as the base of operations for the United States Hockey Hall of Fame.

Eveleth's hockey orientation, most recently personified by native son Gary Gambucci, is well known in Duluth. Nonetheless a brief recapitulation is in order. Perhaps no community of its size or larger within this country has contributed as much to the ice sport. It has sent such players as the Boston Bruin's legendary Mr. Zero, Frank Brimsek; and Chicago's Mike Karakas, Sam LoPresti, and hardrock John Mariucci into the National Hockey League. Mariucci, now in the Minnesota North Star's front office, coached the 1956 U.S. Olympic Team to a silver medal with the help of Eveleth natives John Mayasich, long regarded as the outstanding amateur player produced in this country, John Matchefts, now Air Force Academy coach, and Willard Ikola, premier Minnesota high school hockey coach. If that wasn't enough the local

high school has won the state tournament five times in thirteen appearances. In essence then in Eveleth there's only one game: hockey.

With such a heritage the city fathers felt the erection of a shrine to honor America's contribution to the sport would be appropriate. The building site is located on Highway 53 in the vicinity of the Eveleth Area Technical School.

The United States Hockey Hall of Fame will honor those American players, coaches, referees, and administrators who have made significant contributions to the game. However, more than this, the facility will cover all phases of hockey as played in the United States: high school, college, amateur, international, and professional. In addition there will be a theatre and library where coaches and other interested persons would be able to come to view training films and books relative to the game. Rather than being a mere repository of the past, the United States Hockey Hall of Fame will serve as an educational medium for the game in this country. Eveleth stands ready then to take its place alongside of Cooperstown, Canton, and Springfield.

---

---

# SPORTS

6 PM *WDIO-TV* 10 PM

---

---

# DAVE ZENTNER Agency

LIFE, HEALTH, PENSION, GROUP

715 1st American Bank Building

Phone: (218) 727-7437

For the best in professional insurance  
counseling see a trained Bankerslifeman

Kerry LaPine

John A. Susnik

Trennis G. Yoder

**THE BANKERS LIFE** 

BANKERS LIFE COMPANY DES MOINES, IOWA

*If you just bought a car  
and it wasn't at Kolars,  
you paid too much!*

**Kolar Buick**

# Nick's Pizzeria

The **FINEST** In Town

Call: 728-4416

**3 DULUTH LOCATIONS:**

MR. NICK'S WOODLAND  
1601 Woodland Ave.

MR. NICK'S DOWNTOWN      BURGER KING  
220 W. Superior St.      West End

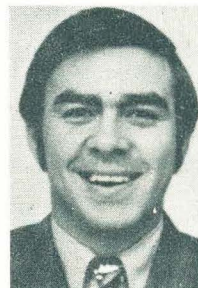
## ATHLETIC DEPARTMENT

### ADMINISTRATION

Ralph Romano is in his third season of overseeing UMD's ten sport athletic program encompassing 300 students. An alumnus of UMD, Romano has previously served the department as sports publicity director, ticket manager and athletic business manager before



ROMANO



McLEOD



RICKERT

he was elevated to assistant athletic director in 1968.

Following the retirement of Lloyd Peterson who served UMD athletics for 38 years, Romano was the logical candidate to fill the vacated seat.

While serving in the athletic department, Romano coached the Bulldog hockey team for nine years (1959-68) and played a dominant role in gaining entrance into the WCHA, the nation's most demanding college hockey league.

Romano's chief assistant is athletic business manager Bruce McLeod, also a UMD graduate.

McLeod won local fame as a member of the Bulldog hockey team from 1966-69. He co-captained the team during his senior year and was a constant scoring threat from his left wing position.

McLeod's duties include supervision of athletic publicity and range from continuous correspondence with the news media and opposing schools to handling the financial records.

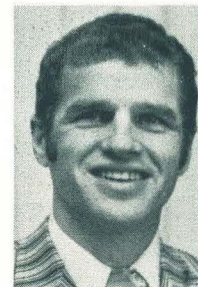
Secretary Kathy Erickson toils with the paper work and ticket arrangements for the department.

### COACHING STAFF

UMD's athletic program gets underway even before the scholastic year begins in the fall. Jim Malosky, now in his 14th season at UMD, kicks-off the



SHERCLIFFE



RAY



MALOSKY

season with footballs flying in the air. Third-year man Neil Ladsten, who operates as the university's wrestling mentor, Mark Lundgren, Al Decker and Bill Lippitt assist Malosky in football. Terry Shercliffe, a three-year veteran of coaching freshman hockey, begins his second year as head coach this season. Maurice Ray takes over the reigns as head basketball coach while Gary Plank, a graduate student at UMD, takes over as the swimming coach. Al Holland begins his second year coaching UMD's baseball program.

The dean of UMD coaches, Lew Rickert now in his 23rd year at UMD, pilots the golf and tennis teams in the spring. Miss Eleanor Rynda, one of the few women coaches of men's college varsity teams across the country, is in command of the track and cross country squads for her fourth season.

Malosky, Ladsten, Shercliffe, Rickert, Holland Ray and Rynda are all instructors in UMD's physical education department.

Rickert is a former athletic director at UMD, manning the post from 1947-55.



LADSTEN



RYNDA



HOLLAND

#### SERVICE STAFF

Don Roach became UMD's first trainer last season. A graduate of the University of Indiana, Roach gives attention to the care of the UMD athletes and instructs in the Physical Education Department.

Assisting Bruce McLeod with UMD's athletic publicity is Tom Knutson, a junior at the university.

Knutson graduated from Duluth East in 1969 and has spent the past three summers as an intern on the Duluth Herald & News Tribune sports staff. At UMD he handles the releases and brochures and assists with press box operations during games.

Rounding out the staff is equipment manager, Clarence Hillman.



HILLMAN



ROACH



KNUTSON

## TOM'S CONOCO STATION

CALL US FOR QUALITY WORK  
**727-9557**

- ★ TUNE UPS
- ★ BRAKE SPECIALISTS
- ★ MINOR REPAIRS
- ★ WHEEL BALANCING
- ALL ACCESSORIES
- TIRES - BATTERIES

BY APPOINTMENT FOR PICKUP, DELIVERY  
TOM STAUBER, MGR.

2105 Central Entrance

Duluth

## CURLY'S ROUND-UP

SPLIT LEVEL BAR • COLORED TV

Bus Trips For All UMD  
Hockey Games—Leaves 7:30 p.m.

**2013 West Superior St.**

**727-9895**



# No.1

## in College Sales

YOUR COLLEGE MASTER REPRESENTATIVES

1225 Tower Avenue  
Telegram Building - Room 207  
Superior, Wisconsin 54880

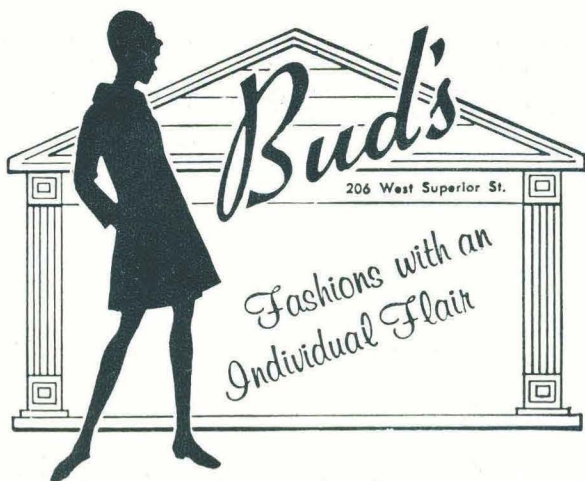
GERRY CAOUILLE

Bus. 392-5636  
Res. 398-3253

RICHARD J. BAINE

Bus. 392-5636  
Res. 727-7519

FIDELITY UNION LIFE INSURANCE COMPANY  
Home Office - Dallas, Texas



WHERE IT COSTS LESS THAN YOU THINK TO BE WELL DRESSED

Swing into tomorrow today at ...



... for juniors and teens

keeping pace with a growing UMD

# MOUNT ROYAL DRUG

PRESCRIPTION PHARMACY

Cosmetics - Photo Supplies - Gifts - Gibson Cards  
 Baby Needs - Bridgeman Ice Cream  
 Tobacco Department

**GO — BULLDOGS — GO!**

**Closest to "U"**

Woodland and St. Marie Street  
 in the  
 Mount Royal Shopping Center

**Free Delivery**

**728-4224**

**COLD BEER**

**DINNER WINES**

"The Best in Cordials"

## London Road Liquor Store

**1932 LONDON ROAD**

**724-0404**

M. B. OLSON

JIM "CUB" OLSON

Off-Street Parking

Delivery Service



# MINNESOTA, DULUTH ROSTER

No.	Name	Pos.	Year	Hgt.	Wgt.	Hometown
7	Pat Boutette.....	LW	So.	5-8	170.....	Windsor, Ont.
24	Ernie Campe.....	D	So.	6-0	175.....	Toronto, Ont.
10	Lyn Ellingson .....	C	Jr.	5-7	150.....	Duluth, Minn.
5	Dennis Fearing.....	D	So.	5-11	175.....	Hibbing, Minn.
22	Cam Fryer.....	RW	Jr.	5-10	175.....	Unity, Sask.
17	Lyman Haakstad.....	C	So.	5-8	165.....	Gr. Prairie, Alt.
23	Mark Heaslip.....	RW	Jr.	5-10	185.....	Duluth, Minn.
15	Greg Hubick.....	D	So.	5-10	180.....	Strausburg, Sask.
21	Roger Hunt.....	RW	Fr.	5-11	190.....	Toronto, Ont.
16	Merv Kiryluik.....	RW	So.	5-10	170.....	Dauphin, Man.
25	Ken Larson.....	RW	Fr.	6-1	190.....	Duluth, Minn.
18	Walt Ledingham.....	LW	Jr.	5-11	185.....	Weyburn, Sask.
8	Mike Lence.....	LW	So.	5-10	165.....	St. Paul, Minn.
4	Jim Maertz.....	D	Sr.	5-11	175.....	Duluth, Minn.
2	Gord McDonald.....	D	Fr.	5-9	165.....	Windsor, Ont.
1	Jerome Mrazek.....	G	So.	5-11	165.....	Pr. Albert, Sask.
20	Chuck Ness.....	LW	Jr.	5-10	170.....	Duluth, Minn.
14	David Roy.....	C	Jr.	5-8	165.....	Toronto, Ont.
6	Mike Stevens.....	D	Sr.	5-11	190.....	Winnipeg, Man.
3	Pokey Trachsel.....	D	Jr.	6-0	195.....	Duluth, Minn.
30	Ken Turko.....	G	Fr.	6-0	175.....	Thunder Bay, Ont.
19	Alan Young.....	C	Jr.	5-8	165.....	Toronto, Ont.
12	Bob Younghans.....	C	Jr.	5-10	155.....	Minneapolis, Minn.

**HEAD COACH:** Terry Shercliffe  
**ASS'T. COACH:** Bruce Rogers



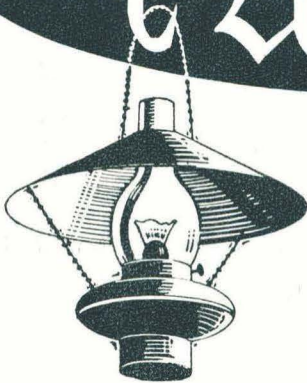
GUYS (and GALS)

# PANT SHACK



209 West Superior St.

## the Underground



When you want a fashionable item in clothing,  
try shopping the shops that feature the newest  
in the best of taste.

Remember, the right fashion has no age!

*Ed Barbo's*

### Columbia

*Fashion Clothes*  
for MEN and STUDENTS

303 W SUPERIOR ST.





# Referee Signals



HIGH STICKING



CROSSCHECKING



KNEEING

## THE UMD ROUSER

By DAVID LEWIS OLSON

Now, let us praise UMD  
 Ever strong and true we will be  
 So the Bulldog name  
 Maroon and Gold's own fame  
 We hail University  
 Rah! Rah! Rah!  
 U (clap) M (clap) D (clap, clap)  
 Always with our loyalty  
 Sing and cheer to be victorious  
 U-M-D

# MINNESOTA-DULUTH

1	JEROME MRAZEK .....	G
3	POKEY TRACHSEL .....	D
4	JIM MAERTZ .....	D
5	DENNIS FEARING .....	D
6	MIKE STEVENS .....	D
7	PAT BOUTETTE .....	LW
8	MIKE LENCE .....	LW
10	LYN ELLINGSON .....	C
11	RON MORGAN .....	LW
12	BOB YOUNGHANS .....	C
14	DAVID ROY .....	C
15	GREG HUBICK .....	D
16	MERV KIRYLUK .....	RW
17	LYMAN HAAKSTAD .....	C
18	WALT LEDINGHAM .....	LW
19	ALAN YOUNG .....	C
20	CHUCK NESS .....	LW
21	ROGER HUNT .....	RW
22	CAM FRYER .....	RW
23	MARK HEASLIP .....	RW
24	ERNIE CAMPE .....	D
25	KEN LARSON .....	RW
30	KEN TURKO .....	G



WASHOUT



DELAYED WHISTLE



TRIPPING



ELBOWING



ICING



HOOKING



INTERFERENCE



CHARGING

# MICHIGAN

1	KARL BAGNELL.....	G
2	BRIAN SKINNER.....	D
3	JEAN CARTIER.....	D
4	PETE DUNBAR.....	D
5	RANDY TRUDEAU.....	D
7	BERNIE GAGNON.....	F
8	PAT DONNELLY.....	F
9	RANDY NEAL.....	F
10	RICK MALLETTE.....	F
11	MICHEL JARRY.....	D
12	GARY KARDOS.....	F
15	PAUL-ANDRE PARIS.....	F
16	FRANK WARNER.....	F
17	ROBERT STRAUB.....	F
20	GARY CONNELLY.....	D
21	JERRY LEFEBVRE.....	D
22	BOB FALCONER.....	F
23	JULIAN NIXON.....	F
24	ROY BOLLES.....	G
30	TERRY LAJEUNESSE.....	G

## HOCKEY SCHEDULE

Nov. 5	ALUMNI
Nov. 6	U.S. OLYMPIC
Nov. 12-13	MINNESOTA
Nov. 19-20	North Dakota
Nov. 25-26-27	TOURNAMENT
Dec. 3-4	Colorado College
Dec. 17-18	Minnesota
Dec. 26-27	DENVER
Dec. 31	CZECH OLYMPIC
Jan. 1-2	WISCONSIN
Jan. 7-8	MICHIGAN
Jan. 14-15	Michigan Tech
Jan. 21-22	Denver
Feb. 1-2	Notre Dame
Feb. 12-13	NORTH DAKOTA
Feb. 18-19	Michigan State
Feb. 25-26	MICHIGAN TECH
Mar. 1 & 3	COLORADO COLLEGE



SLASHING



HOLDING



DELAYED PENALTY



MISCONDUCT

GO! BULLDOGS GO!

## HUBERT D WHEELER & ASSOCIATES

NEW ENGLAND LIFE

NEL EQUITY SERVICES CORPORATION

BENEFIT PLAN SERVICES, INC.

711 First American Building

722-5566

### BULLDOGS HIT ROAD...

This weekend's series with Michigan is UMD's last home appearance in a month as they face three road series in four weeks.

Next weekend the Bulldogs will bus to Houghton where they will renew their rivalry with Michigan Tech. The Bulldogs are scheduled to assist the Huskies in opening their new Arena, which will replace the much talked about Dee Stadium.

The Bulldogs have had less success with Michigan Tech than against any other WCHA team, winning just four games in 48 contests. However, the last time the Bulldogs beat the Huskies was for the championship in the Christmas City of the North Invitational Hockey Tournament in 1970 by a 6-1 score.

The series at Michigan Tech is a four-point series as the teams will meet again Feb. 25-26 in Duluth.

Two weeks from this weekend the Bulldogs will fly to Denver to try and snap the Pioneer's seemingly

invincible domination when playing in DU Arena. UMD and Denver divided their two-game set in Duluth, the Bulldogs winning the opener 3-2 before the Pioneers of Murray Armstrong rebounded for an 8-3 triumph.

The series in Denver is also a four point series.

On Tuesday and Wednesday, Feb. 1 and 2, the Bulldogs will be in South Bend to challenge the WCHA's newest addition, Notre Dame. The teams squared off last season in a non-conference match with the Bulldogs copping the nightcap after the teams deadlocked in the opener. The Notre Dame series is an important eight-point series.

Not until Feb. 12-13 will the Bulldogs return home to face the North Dakota Sioux. UMD edged the Sioux in mid-November 3-2 in the opener but lost the second game by a 4-3 score for their first WCHA loss of the year. The series in Duluth will be worth four points.

# Schrader Drug

## "Everything in Drugs"

Free Parking -:- -:- -:- S & H Green Stamps

504 E. 4th St.

722-1788

THE TEAM TO WATCH  
EYEWITNESS  
NEWS

wdsmtv6



# MICHIGAN ROSTER

No.	Name	Pos.	Year	Hgt.	Wgt.	Hometown
1	Karl Bagnell.....	G	Sr.	5-6	150.....	Orangeville, Ont.
24	Roy Bolles.....	G	Fr.	5-11	165.....	Detroit, Michigan
3	Jean Cartier.....	D	Sr.	5-9	175.....	Verdun, Quebec
20	Gary Connelly.....	D	Jr.	5-11	175.....	Noranda, Quebec
8	Pat Donnelly.....	F	Fr.	5-10	170.....	Livonia, Michigan
4	Pete Dunbar.....	D	Fr.	6-0	180.....	Toronto, Ontario
22	Bob Falconer.....	F	So.	5-8	160.....	Forest, Ontario
7	Bernie Gagnon.....	F	Sr.	5-9	175.....	Montreal, Quebec
11	Michel Jarry.....	D	Jr.	5-9	150.....	St. Laurent, Quebec
12	Gary Kardos.....	F	Fr.	5-10	170.....	Livonia, Michigan
30	Terry LaJeunesse.....	G	Fr.	5-10	170.....	Houghton, Michigan
21	Jerry Lefebvre.....	D	Sr.	6-0	185.....	North Bay, Ontario
10	Rick Mallette.....	F	Jr.	5-7	160.....	Montreal, Quebec
9	Randy Neal.....	F	Fr.	5-8	160.....	Toronto, Ontario
23	Julian Nixon.....	F	So.	5-8	155.....	Des Moines, Iowa
15	Paul-Andre Paris.....	F	Fr.	5-8	160.....	St. Hyacinthe, Quebec
2	Brian Skinner.....	D	Sr.	5-10	190.....	Port Lambton, Ontario
17	Robert Straub.....	F	Sr.	5-10	170.....	Ann Arbor, Michigan
5	Randy Trudeau.....	D	Fr.	5-10	175.....	Chatham, Ontario
16	Frank Warner.....	F	Fr.	5-10	175.....	Detroit, Michigan

HEAD COACH: Al Renfrew





*All Heads have to beat is the Clock*



1305 EAST FIRST STREET, DULUTH, MINNESOTA, PHONE: 728-4466  
OPEN WEEKDAYS 9:30 A.M. to 9 P.M. SATURDAYS 9:30 A.M. to 5 P.M.  
FREE SKI FILMS, SNOW REPORTS — WE ACCEPT TRADE-INS



**Northern  
City  
National Bank**

306 WEST SUPERIOR STREET, DULUTH, MINNESOTA 55801  
PHONE 722-3301, MEMBER FDIC

## THIS WEEK'S SERIES

Michigan's Wolverines bring a six-game winning streak to Duluth this weekend, coming off a two-game sweep in the IMA Tournament in Flint, Michigan where they dropped Western Ontario and Bowling Green for the championship.

Many WCHA forecasters predicted Michigan to hover close to the basement this year, but the Wolverines of veteran Coach Al Renfrew shunned the reports and are now in contention for the WCHA title.

This weekend's series is very crucial to both clubs as it is an eight-point series. If either team sweeps the series, it could knock the loser out of championship contention.

The Wolverines opened their season with a pair of victories over Western Ontario before bowing twice to Wisconsin, the current WCHA front runners. After splitting a home-and-home series with Michigan State, the Wolverines have upset Notre Dame twice each.

Bernie Gagnon, a senior from Montreal and last season's leading scorer for Michigan with 48 points, is again setting the scoring pace for Michigan as he has accounted for 16 goals and 10 assists in leading the Wolverines to a 9-3 overall mark to date.

Gagnon is a right winger on the same line as center Mike Jarry, who is the team's second leading producer with seven goals and 15 assists for 22 points, Paul Paris, a freshman, is the left winger on Michigan's one line.

Senior Brian Skinner anchors the defense for the Wolverines and captains the 1971-72 edition. Michigan's defense has been "off and on" this year



Bernie Gagnon

and goalie Karl Bagnell, only 5-foot-6 and 150 pounds, has averaged over 35 saves per game with a 3.8 goals-against average.

Last season the Bulldogs split their series with Michigan, winning the opener 8-5 before falling 4-3 in the second game. Michigan finished last in the WCHA last season with a 9-21 league record and thus missed a berth in the playoffs.

### "A WINNING TEAM IN ANY LEAGUE"

John Owens  
President

John Ring  
Investments

Bob Skinner  
Trust Dept.

Bud Ellefson  
Don Kimmel  
Comm. Loan

Mike Jubie  
Mort. Loan

Marty Maclain  
Purchasing Dept.

Don Wolfe  
Inst. Loan

Wayne Sodergren  
Inst. Loan

Harold Rudeck  
New Accounts

Chuck Henderson  
Marketing

Don Snyder  
Operations

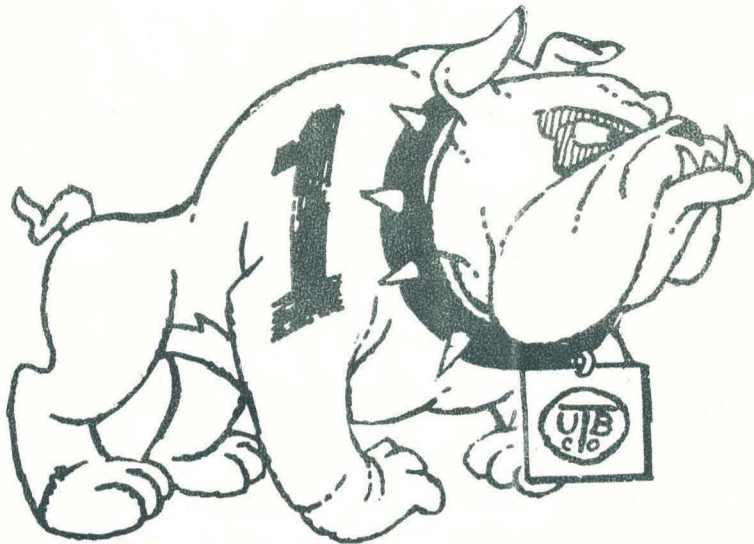
## Northwestern Bank of Commerce

DULUTH, MINNESOTA 55802

MEMBER F.D.I.C.

TELEPHONE 722-4784

# WE'RE DETERMINED...



# TO BE YOUR No. 1 SOURCE!

## UNITED TRUCK BODY CO. Inc.

Custom Manufacturers and Distributors of Truck Bodies and  
Allied Equipment

HERCULES-GALION—Dump Bodies & Hoists

GLED HILL -- Snow plows

WESTERN—Snow Handling Equipment

DORSEY—Van & Flatbed Trailers

LuVERNE—Fire Apparatus

TULSA—Winches & P.T.O.

VENCO—Liftgates

MARMON-HERRINGTON -- All Wheel Drive

BLUE BIRD—School & Transit Buses.

HOLAN—Aerial Devices & Derrick Diggers

UNISTEEL—Steel & Aluminum Van Bodies

STAHL —Utility Bodies & Equipment

OMAHA STANDARD—Platform & Grain Bodies

ANTHONY—Liftgates & Dump Bodies

MASTERGUARD—Pickup Bumpers & Accessories

### NORTHERN

A CUSTOM BODY DESIGNED AND MANUFACTURED BY US TO  
YOUR SPECIFICATIONS — FOR YOUR SPECIFIC JOB!

3357 Miller Trunk Highway

Duluth, Minnesota

218-729-6000

## COMMUNITY BOOSTS BULLDOGS

Success in intercollegiate athletics is directly tied to the ability of universities to provide financial aid to qualified student athletes. At UMD, this aid has come through the North Star Scholarship Fund which is supported through contributions from the area.

This fund, which is solicited by a number of business and professional friends of UMD, has grown substantially in the last few years. The growing aid from the community has helped UMD make significant strides towards success in its athletic programs. Continued support from those currently involved, bolstered by additional con-

tributions from the community, will bring the success all are striving for.

Those who contribute \$100 or more are enrolled as members of the Blueline, Quarterback and Hoop Clubs and receive a pair of reserved seat tickets to a football, basketball, and hockey game of their choice. However, all contributions, regardless of amount, are gratefully acknowledged.

Won't you join the following supporters of UMD athletics by sending your contribution to the North Star Scholarship Fund, 120 Physical Education Building, Duluth, Minnesota 55812.

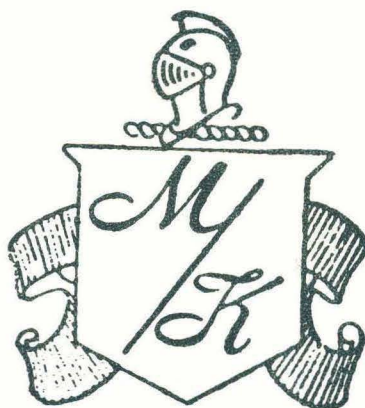
### 1971/72 NORTH STAR SCHOLARSHIP CONTRIBUTORS--\$100 OR MORE

Dr. Curtis F. Ahrens  
Airport State Bank  
Harry Allenfall's, Inc.  
Dr. James M. Anderson  
Dr. Gordon C. Amundson  
Dr. Vernon L. Amundson  
Banker's Life  
Bell Brothers Funeral Home  
Roger Bergman  
Big Duluth  
Robert W. Bridges  
Chinese Lantern  
James Claypool  
Tom Clure  
Colonel Sanders  
Douglas Cudmore  
Dr. Raymond W. Darland  
Dr. Lloyd Dedon  
Dr. Harry R. Dorvinen  
Dr. William Douglas  
Duluth Clearing House Assn.  
First American National Bank  
Northern City National Bank  
Northwestern Bank of Commerce  
Duluth National  
Duluth Clinic  
Duluth-Superior Sports Broadcasters Assn.  
Dr. M. M. Fifield  
Dr. Richard Fisher  
Frederick's, Inc.  
Fryberger, Buchanan, Smith, Sanford & Frederick  
Jeremy Fryberger  
Robert M. Fryberger, Jr.  
Mrs. Robert M. Fryberger, Sr.  
Glass Block Store  
Goldfine's By-the-Bridge  
Dr. Robert J. Goldish

Leonard E. Griffith  
Harper, Eaton & Gustafson  
Harbor City Oil  
Dr. Vernon Harrington  
"Ole" Haugrud  
Dr. Robert Heller  
N. A. Hewitt  
Bardon Higgins  
Raymond Higgins  
Byron Holje  
Joseph P. Hubert  
Dr. Willis B. Irons  
Earl Jacott Memorial  
Philip R. Johnson  
Dr. John P. Knoedler  
Dr. Stuart L. Jensen  
Lakehead Electric  
Dr. Robert D. LeVasseur  
Fred C. Lewis  
Minnesota Power & Light Co.  
Sidney Mason  
Medical Arts Pharmacy  
Dr. William G. Merrick  
Dr. F. B. Moore  
Dr. Mylon B. Morris  
Mount Royal Pharmacy  
New England Life  
Noel Muller  
Norm's Reliable  
North Shore State Bank  
Oneida Realty  
Pantour, Inc.  
Park State Bank  
Pella Products  
Dr. John H. Peterson  
The Pickwick  
Bert Pollan  
Dr. John E. Power

Prindle-Jones Co.  
Radisson Hotel  
E.L. Rasmussen  
Dr. A. E. Reardon  
Dr. Henry H. Reed  
Ralph A. Romano  
Henry Royer  
Jack D. Salo, Inc.  
Security Jewelers  
Mitchell Sill  
Peter H. Sneve  
George H. Spencer, Jr.  
Delano Stauber  
Dr. W. A. Stein  
Stewart-Taylor Printing Co.  
Stewart's Wheel Goods  
Jim Stuberg  
Sullivan Oil Co.  
Roderick Syck  
Teamsters Local 346  
Twin Ports Opticians  
Dr. J. E. Wall  
WDSM  
West End Iron & Metal  
Western National Bank  
Wheeler Burns & Buchanan  
Hubert D. Wheeler  
Dr. Allan A. Young  
Dave Zentner

MANY OTHERS CONTRIBUTE FROM \$10-\$99



Be an  
M & K Man

Choose from the Largest collection of mens clothing and furnishings in the area. We also feature one of the Nations largest selections of double knit slacks, suits and sportcoats.

*Mortrud - Koneczny*

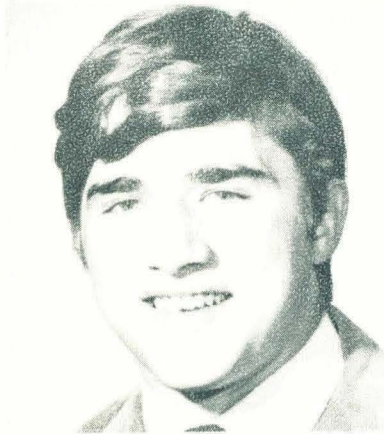
*2016 West Superior St.*

*Duluth, Minnesota*

*Phone 722-2525*

# THE BULLDOGS

7 PAT BOUTETTE LW 24



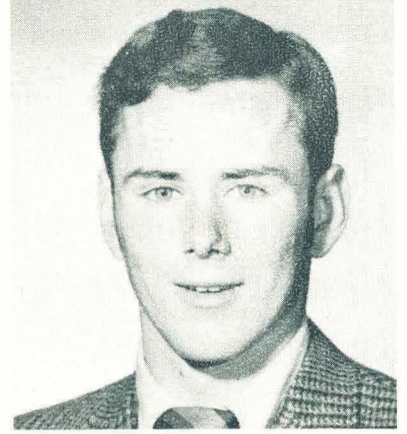
5-8, 170, So., Windsor, Ont.

ERNIE CAMPE D



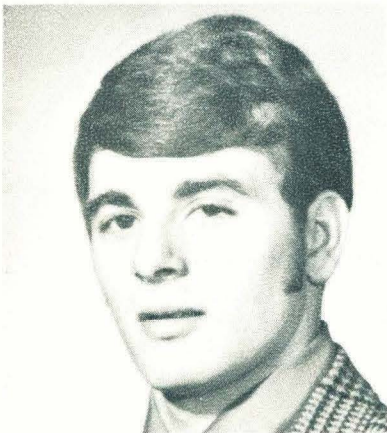
6-0, 175, So., Toronto, Ont.

10 LYN ELLINGSON C



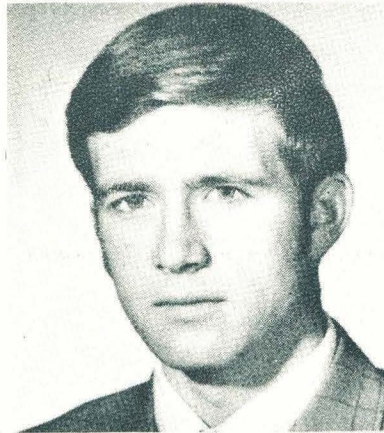
5-7, 150, Jr., Duluth

5 DENNIS FEARING D



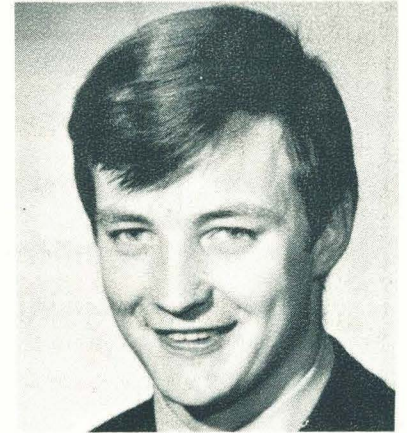
5-11, 175, So., Hibbing

22 CAM FRYER RW



5-10, 175, Jr., Unity, Sask.

17 LYMAN HAAKSTAD C



5-8, 165, So., Gr. Prairie, Alt.

"A WINNING TEAM IN ANY LEAGUE"

John Owens  
President

John Ring  
Investments

Bob Skinner  
Trust Dept.

Bud Ellefson  
Don Kimmel  
Comm. Loan

Mike Jubie  
Mort. Loan

Marty Maclain  
Purchasing Dept.

Don Wolfe  
Inst. Loan

Wayne Sodergren  
Inst. Loan

Harold Rudeck  
New Accounts

Chuck Henderson  
Marketing

Don Snyder  
Operations

**Northwestern Bank of Commerce**

DULUTH, MINNESOTA 55802

MEMBER F.D.I.C.

TELEPHONE 722-4784

# BEST PLACE

to warm up before the game

to warm up after the game

to warm up during the game

and while we're on our favorite subject,  
there isn't a better place to warm up any time,  
game or no game.

## PRE AND POST GAME DINNERS A SPECIALTY

### In our Dining Room

(famous from coast to coast)

- Best food in Duluth, served The Flame way!
- Dancing on weekends to the Nonchalants

### In our Torch Bar

(everybody's favorite meeting place)

- He-Man Sandwiches
- Heroic Drinks
- Bulldog Specials
- Beautiful People

PLUS

**ENTERTAINMENT NIGHTLY!**



Waterfront at Fifth West

Art Sibley, Owner-Manager



# THE BULLDOGS

23 MARK HEASLIP RW



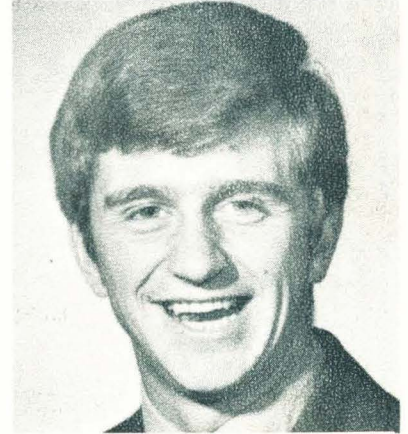
5-10, 185, Jr., Duluth

15 GREG HUBICK D



5-10, 180, So., Strausburg, Sask.

16 MERV KIRYLUK RW



5-10, 170, So., Dauphin, Man.

18 WALT LEDINGHAM LW



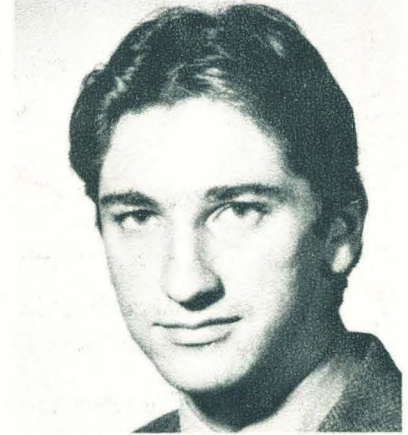
5-11, 185, Jr., Weyburn, Sask.

4 JIM MAERTZ D



5-11, 175, Sr., Duluth

1 JEROME MRAZEK G



5-11, 165, So., Pr. Albert, Sask.

"A WINNING TEAM IN ANY LEAGUE"

John Owens  
President

John Ring  
Investments

Bob Skinner  
Trust Dept.

Bud Ellefson  
Don Kimmel  
Comm. Loan

Mike Jubie  
Mort. Loan

Marty Maclain  
Purchasing Dept.

Don Wolfe  
Inst. Loan

Wayne Sodergren  
Inst. Loan

Harold Rudeck  
New Accounts

Chuck Henderson  
Marketing

Don Snyder  
Operations

**Northwestern Bank of Commerce**  
DULUTH, MINNESOTA 55802 MEMBER F.D.I.C. TELEPHONE 722-4784

*In Duluth it's the*

# PIERWATER

CHOICE LIQUORS

*Delicious*

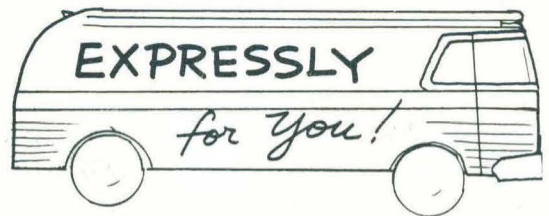
CHARCOAL - BROILED FOODS

Phone: 727-8901

508 East Superior St.

Duluth, Minnesota

**C**loquet  
**T**ransit



*for your convenience we offer . . .*

• **LUXURY HIGHWAY COACHES**

Equipped with reclining seats,  
air conditioning and rest rooms

• **ACTIVITY BUSES**      • **VANS**

FOR INFORMATION CALL COLLECT **879-3391**

OR WRITE BOX 277 • CLOQUET, MINN. 55720

# THE BULLDOGS

20 CHUCK NESS LW



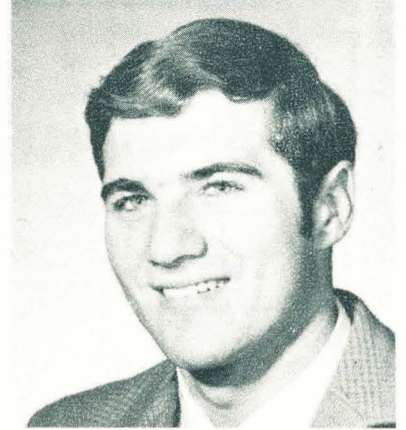
5-10, 170, Jr., Duluth

11 DAVID ROY C



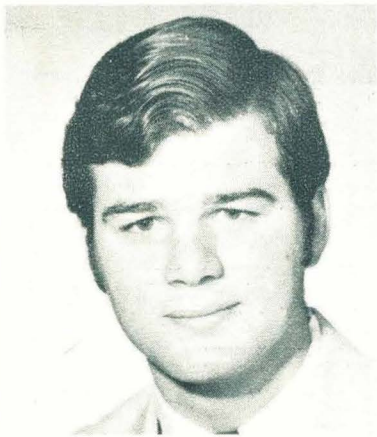
5-8, 165, Jr., Toronto, Ont.

6 MIKE STEVENS D



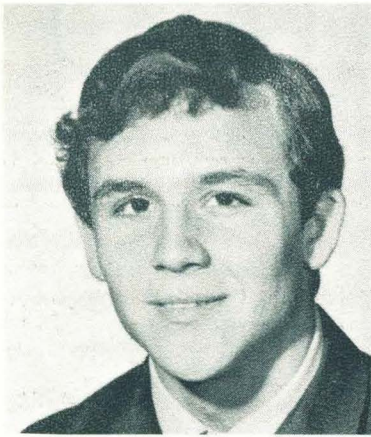
5-11, 190, Sr., Winnipeg, Man.

3 POKEY TRACHSEL D



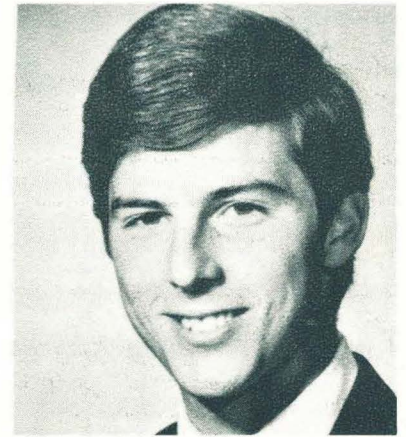
6-0, 195, Jr., Duluth

19 ALAN YOUNG C



5-8, 165, Jr., Toronto, Ont.

12 BOB YOUNGHANS C



5-10, 155, Jr., Minneapolis

***Roger A. Bergman***

DISTRICT MANAGER

**Northwestern National Life Insurance Co.**

300 TORREY BUILDING, DULUTH, MINNESOTA

722-5823

FRENCHBURGER DULUTHBLIZZARDBURGER VIENNABURGER STROGANOFFBURGER BULLDOGBURGER RABBITBURGER SAUNABURGER TOPLESSBURGER DAREBURGER

**BEFORE THE GAMES — AFTER THE GAMES**

**BETWEEN THE GAMES . . .**

*Join EVERYBODY at*



## **Mount Royal Shopping Center**

(Off Woodland Avenue Near UMD)

FOR FUN EATING IN A PLEASANT ATMOSPHERE —  
 PINES BY DAY — CANDLELIGHT BY NIGHT — SNACKS  
 — 36 DINNERBURGERS — STEAKS — CHICKEN —  
 FONDUES — SPECIAL DESSERTS AND BEVERAGES —  
 A SPECIAL MENU JUST FOR CHILDREN — GROUP  
 ACCOMODATIONS — LOTS OF PARKING — ETC. —  
 — CORN ON COB — OPEN 7 DAYS A WEEK —

# **728-4701**

NEW OWNERS --- THE BOWIE'S

SWISSBURGER WISCONSINBURGER RUEBENBURGER CANNIBALBURGER CHEESE'NPINEAPPLE  
 ER TEXASBURGER NAPOLIBURGER GOURMETBURGER HERMITBURGER

\*WCHA Game

# WCHA COMPOSITE SCHEDULE

**SATURDAY, JANUARY 1**  
 \*Wisconsin at Minnesota, Duluth

**SUNDAY, JANUARY 2**  
 \*Wisconsin at Minnesota, Duluth

**FRIDAY, JANUARY 7**  
 \*Michigan at Minnesota, Duluth  
 \*North Dakota at Michigan State  
 \*Notre Dame at Colorado College  
 \*Minnesota at Wisconsin  
 \*Michigan Tech at Denver

**SATURDAY, JANUARY 8**  
 \*Michigan at Minnesota, Duluth  
 \*North Dakota at Michigan State  
 \*Notre Dame at Colorado College  
 \*Minnesota at Wisconsin  
 \*Michigan Tech at Denver

**MONDAY, JANUARY 10**  
 \*Michigan Tech at Colorado College  
 Cornell at Notre Dame

**WEDNESDAY, JANUARY 12**  
 U.S. Olympics vs. Minnesota  
 at Mets Sports Center, Bloomington  
 Minnesota.

**FRIDAY, JANUARY 14**  
 \*Michigan at Denver  
 \*Notre Dame at Michigan State  
 Minnesota, Duluth at Michigan Tech  
 \*Colorado College at Wisconsin  
 \*North Dakota at Minnesota

**SATURDAY, JANUARY 15**  
 \*Michigan at Denver  
 \*Minnesota, Duluth at Michigan Tech  
 \*Notre Dame at Michigan State  
 \*Colorado College at Wisconsin  
 \*North Dakota at Minnesota

**WEDNESDAY, JANUARY 19**  
 \*Michigan at Michigan State  
 Air Force at Colorado College

**FRIDAY, JANUARY 21**  
 \*Michigan Tech at Michigan  
 \*Notre Dame at Minnesota  
 \*Colorado College at North Dakota  
 \*Minnesota, Duluth at Denver

**SATURDAY, JANUARY 22**  
 \*Michigan Tech at Michigan  
 \*Notre Dame at Minnesota  
 \*Colorado College at North Dakota  
 \*Minnesota, Duluth at Denver

**WEDNESDAY, JANUARY 26**  
 Air Force Acad. at Denver

**FRIDAY, JANUARY 28**  
 \*Michigan at North Dakota  
 \*Wisconsin at Notre Dame  
 \*Denver at Minnesota  
 Lake Superior St. at Michigan Tech

**SATURDAY, JANUARY 29**  
 \*Michigan at North Dakota  
 \*Wisconsin at Notre Dame  
 \*Denver at Minnesota  
 Lake Superior State at Michigan Tech

**TUESDAY, FEBRUARY 1**  
 \*Minnesota, Duluth at Notre Dame

**WEDNESDAY, FEBRUARY 2**  
 \*Minnesota, Duluth at Notre Dame  
 \*Colorado College at Michigan Tech

**FRIDAY, FEBRUARY 4**  
 \*Colorado College at Michigan  
 \*North Dakota at Denver  
 \*Michigan State at Michigan Tech  
 \*Wisconsin at Minnesota

**SATURDAY, FEBRUARY 5**  
 \*Colorado College at Michigan  
 \*North Dakota at Denver  
 \*Michigan State at Michigan Tech  
 \*Wisconsin at Minnesota

**WEDNESDAY, FEBRUARY 9**  
 \*Michigan State at Michigan

**FRIDAY, FEBRUARY 11**  
 \*Michigan State at Minnesota  
 \*Colorado College at Denver  
 \*Notre Dame at Wisconsin  
 \*Michigan at Michigan Tech

**SATURDAY, FEBRUARY 12**  
 \*Michigan State at Minnesota  
 \*Denver at Colorado College

\*Notre Dame at Wisconsin  
 \*Michigan at Michigan Tech  
 \*North Dakota at Minnesota, Duluth

**SUNDAY FEBRUARY 13**  
 \*North Dakota at Minnesota, Duluth

**WEDNESDAY FEBRUARY 16**  
 \*Air Force at Colorado College

**FRIDAY FEBRUARY 18**  
 \*Colorado College at Minnesota  
 \*Minnesota, Duluth at Michigan State  
 \*Notre Dame at Denver  
 \*Wisconsin at Michigan  
 \*Michigan Tech at North Dakota

**SATURDAY FEBRUARY 19**  
 \*Colorado College at Minnesota  
 \*Minnesota Duluth at Michigan State  
 \*Notre Dame at Denver  
 \*Wisconsin at Michigan  
 \*Michigan Tech at No. Dakota

**FRIDAY FEBRUARY 25**  
 \*Colorado College at Denver  
 \*Michigan at Notre Dame  
 \*Minnesota at North Dakota  
 \*Wisconsin at Michigan State  
 \*Michigan Tech at Minnesota, Duluth

**SATURDAY FEBRUARY 26**  
 \*Denver at Colorado College  
 \*Michigan at Notre Dame  
 \*Minnesota at North Dakota  
 \*Michigan Tech at Minnesota, Duluth

**SUNDAY FEBRUARY 27**  
 \*Wisconsin at Michigan State

**WEDNESDAY, MARCH 1**  
 \*Colorado College at Minnesota, Duluth

**FRIDAY, MARCH 3**  
 \*Colorado College at Minnesota, Duluth  
 \*Michigan State at Notre Dame  
 \*Minnesota at Michigan  
 \*Denver at Wisconsin  
 \*North Dakota at Mich. Tech

**SATURDAY, MARCH 4**  
 \*Michigan State at Notre Dame  
 \*Minnesota at Michigan  
 \*Denver at Wisconsin  
 \*North Dakota at Mich. Tech

the **CHINESE LANTERN**  
 The Ultimate in Chinese  
 And American Cuisine  
 Open Sundays and Holidays  
 Phone 722-7481  
 403 WEST SUPERIOR STREET

# BEAT THE BULLDOG

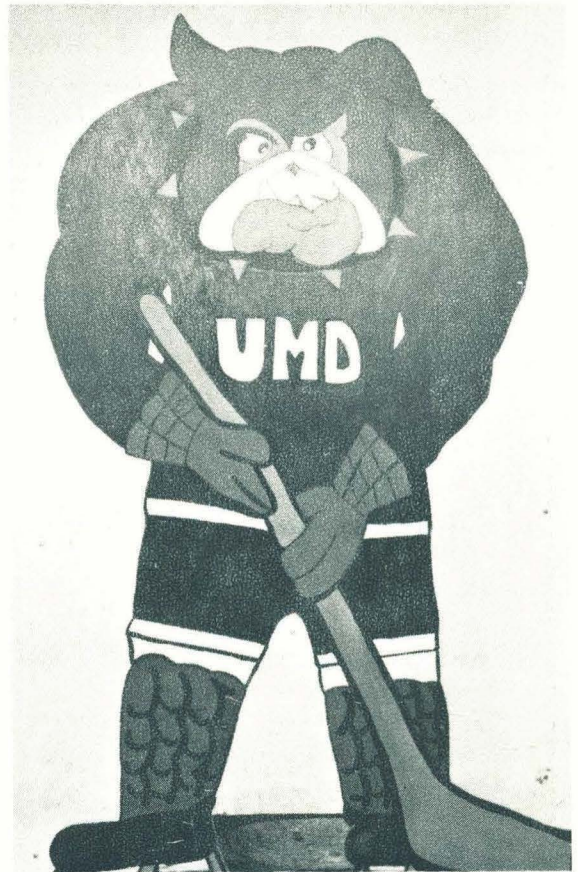
## DULUTH'S NEW BETWEEN PERIOD GAME

CASH PRIZE GOES UP \$10.00 EVERY TIME A  
SHOT IS MISSED!

ORGANIZED AND RUN BY THE BLUELINE CLUB

### SPONSORS

STEWART'S WHEEL GOODS  
SECURITY JEWELERS  
COLUMBIA CLOTHING . PANT SHACK  
NORTHERN CITY NATIONAL BANK  
RADISSON-DULUTH HOTEL



*"How She Go, Boys!"  
And Girls Too!*

# LAST CHANCE LIQUOR STORE

**BIGGEST SELECTION IN TOWN**

See Carl the International Playboy From London  
Paris, Rome and International Falls  
And His Wife Irene

**— WE DELIVER —**

**619 East 4th**

**Phone: 727-6825**

# Before The Game

DINE AT "THE TOP OF THE HARBOR"  
Our Revolving Restuarant

**OR**

VISIT OUR "VIKING" ROOM  
For a "Pre-Game Buffet" \$2.25

# After The Game

STOP BY "THE VIKING" ROOM  
For our Special "Brunch" \$2.25

ENJOY YOUR FAVORITE BEVERAGE  
in the "WHALE BACK" Room  
Dancing and Entertainment



## ANY TIME

Stay at the Beautiful NEW RADISON DULUTH - Luxurious  
Accomodations - Economical Rates - Free Parking --Heated,  
year round Pool - Colored T.V. - Sports Headquarters - Only  
Two Blocks from the ARENA AUDITORIUM .

Call our Sales Office for Information concerning . . .

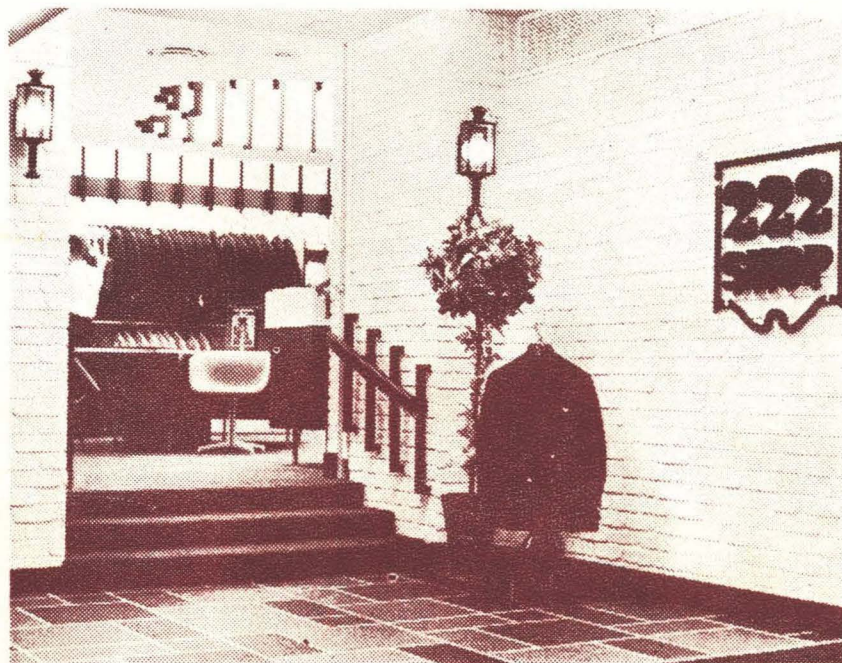
Our "HOCKEY WEEK END" PACKAGE PLAN  
Room Reservations and Dinner Reservations

LET US PICK UP YOUR HOCKEY TICKETS FOR YOU

## radisson duluth

**505 W. Superior HOTEL**

**727-8981**



## **Gateway to Fashion**

The Northwest's Newest and Smartest Shop For  
Style Minded Men —

Your Exclusive Playboy Man On Campus Fashion  
Approved Style Center In The Twin Ports

*Livingston's*  
**BIG DULUTH**

222 West Superior St.

Phone: 722-5526