



**SOCCER**

**2015**

# BULLDOG COUNTRY

#7 LEAH NESHEIM (M)

#5 KATE MCMAHON (F)

**INSIDE**

*Rosters  
Athlete Bios  
Program History  
Record Book*



[UMDBULLDOGS.COM](http://UMDBULLDOGS.COM)

[ticketmaster.com](http://ticketmaster.com)



UMD Athletics



@UMDBulldogs

# FOX 21 HD

We've Got You Covered



Fox Sunrise  
At 7:00am

Weeknights  
6pm & 9pm



[www.fox21online.com](http://www.fox21online.com)



GO <sup>®</sup>  
BULLDOGS!



# CONTENTS

## 2015 SEASON

Schedule **2**

James S. Malosky Stadium **2**

Quick Facts **3**

Coach Greg Cane **4**

Assistant Coach Kelly Grgas-Wheeler **5**

## ATHLETE BIOS

Seniors **7**

Juniors **8**

Sophomores **11**

First-Year Players **17**

## 2014 SEASON

Results **24**

Final Statistics **24**

Category Leaders **25**

## NORTHERN SUN INTERCOLLEGIATE CONFERENCE

2014 Postseason Awards **26**

Member Institutions **27**

All-Time Records **27**

## PROGRAM HISTORY

Postseason Honors **28**

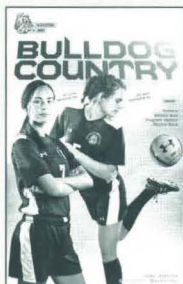
Record Book **31**

Year-by-Year Results **33**

Against the Competition **40**

### ON THE COVER

Seniors Kate McMahon and Leah Nesheim will serve as the team's leaders as the Bulldogs look to outperform preseason expectations during the 2015 season.



UMDBULLDOGS.COM

@UMDBULLDOGS

@UMDSOCCER

### DIRECTOR OF ATHLETIC COMMUNICATIONS

Bob Nygaard

### PHOTOGRAPHERS

Daniel Badhwa

Brett Groehler

Dave Harwig

Madison Roles

### PUBLISHING

Arrowhead Printing

### ADVERTISING SALES

Brian Nystrom

Jay Finnerty

### COVER DESIGN

WestmorelandFlint



## SCHEDULE

### SEPTEMBER

4	!	Central Missouri	Sioux Falls, S.D.	2pm
12		Michigan Tech	Malosky Stadium	12pm
13		Northern Michigan	Malosky Stadium	1pm
15	*	St. Cloud State	St. Cloud, Minn.	7pm
19	*	MSU Moorhead	Malosky Stadium	1pm
20	*	Northern State	Malosky Stadium	1pm
26	*	Upper Iowa	Malosky Stadium	12pm
27	*	Winona State	Malosky Stadium	1pm

### OCTOBER

3	*	Sioux Falls	Sioux Falls, S.D.	11am
4	*	Southwest Minnesota	Marshall, Minn.	1pm
9	*	Wayne State (Neb.)	Malosky Stadium	6pm
11	*	Augustana (S.D.)	Malosky Stadium	1pm
17	*	Minot State	Minot, N.D.	1pm
18	*	U-Mary	Bismarck, N.D.	1pm
23	*	Minnesota State	Mankato, Minn.	1pm
25	*	Concordia-St. Paul	St. Paul, Minn.	1pm
30	*	Minnesota-Crookston	Malosky Stadium	6pm

### NOVEMBER

1	*	Bemidji State	Bemidji, Minn.	1pm
4	#	NSIC Quarterfinals	(higher seed)	TBD
6-7	#	NSIC Tournament	(higher seed)	TBD

\* NSIC Contest | Home Game | # Postseason | ! Neutral Site  
All game times listed in Central time.

## QUICK FACTS

### INSTITUTION INFORMATION

Name	University of Minnesota Duluth
Founded	1895
Enrollment	11,500
Chancellor	Dr. Lendley C. Black
Nickname	Bulldogs
Colors	Maroon and Gold
National Affiliation	NCAA Division II
Conference	Northern Sun Intercollegiate Conference
Home Arena	Romano Gymnasium (2,759)
Athletic Director	Josh Berlo
Senior Woman Administrator	Karen Stromme
Faculty Ath. Rep.	Dr. Stephen Castleberry

### LAST SEASON

2014 Record	9-10-1
NSIC/Finish	8-6-1/Seventh
Letterwinners Returning/Lost	13/12
Starters Returning/Lost	3/8
All-Region Returning/Lost	0/2
All-Conference Returning/Lost	0/4

### Head Coach

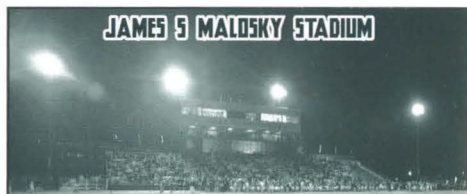
	Greg Cane
Alma Mater (Year)	St. Scholastica (1983)
Office Phone	(218) 726-6229
Email	gcane@d.umn.edu
Record at UMD	229-127-34 (21 seasons)
Overall Women's Record	244-157-36 (24)
Overall Men's Record	106-53-12 (nine)
Assistant Coach	Kelly Grgas-Wheeler
Office Phone	(218) 726-8937
Email	kgrgasw@umn.edu
Athletic Trainer	Charla Buxbaum
Office Phone	(218) 722-6624
Email:	buxba001@d.umn.edu

### HISTORY

All-Time Record	229-127-34 (.631)
NCAA II Playoff Appearances	three (2013, 2009, 2000)
NSIC Championships	four (2002, 2001, 1998, 1997)

### SPORTS INFORMATION

Soccer SID Contact	Joe Hansen
Email	jshansen@d.umn.edu
Office	218-726-8514



JAMES S MALOSKY STADIUM

Northern Minnesota's premier outdoor athletic venue, James S. Malosky Stadium has been the home of Bulldog soccer for all 20 seasons since the program's inception in 1994.

The University of Minnesota Duluth's advantage on its home turf is well known. In 169 lifetime appearances, the Bulldogs have posted a 119-40-10 overall record (good for a .704 winning percentage) at the complex named after legendary Bulldog football head coach Jim Malosky. UMD has also had three perfect home seasons (10-0 in 1995, 7-0 in 1998 and 8-0 in 2009) and only two losing records (1994, 2005) on its own turf.

After the turn of the century, a \$6.5 million, four-level structure, which houses a concession area, suites and press facilities, was added to the grandstand. In 2004, the playing surface was replaced with synthetic grass (A-Turf), and last year, the Bulldogs added a brand new 22-foot-by-12-foot video scoreboard, a project funded by an anonymous donor and dedicated to "walk-on" athletes. Malosky Stadium is also home to the Bulldogs football team and the facility is equipped with an eight-lane all-weather track for track and field.

In addition to housing the football, women's soccer, softball, and track and field Bulldogs, the 4,500-seat Malosky Stadium also hosts a number of high school and junior college football, soccer and track events throughout the year as well as various UMD intramural activities.



## GREG CANE

### HEAD COACH, 22ND SEASON

- Two-time NSIC Coach of the Year (1997, 2003)
- Five NSIC Championships (1997, 1998, 2001, 2002, 2003)
- Five NSIC Postseason Championships (1997, 1998, 2002, 2003, 2009)
- Three NCAA II Postseason Appearances (2000, 2009, 2013)



Few collegiate coaches in any sport can claim to have literally built his or her squad from the ground up, but UMD head coach Greg Cane has been there for every single steps

of the Bulldogs' transition from club-level to a perennial contender in the Northern Sun Intercollegiate Conference and, in 2013, one of the top teams in all of NCAA Division II, finishing the year ranked seventh by the National Soccer Coaches Association of America.

Cane officially became the first head soccer coach in Bulldog history in 1994, and has paced the sideline for each of the team's 370 matches during the program's 21-year existence. During that time, the Duluth native has won at a .631 clip, piling up an overall record of 229-127-34.

After a debut season that produced a 2-4-1 overall record, UMD went on to post double-digit win totals every year from 1995-2003 under Cane. The Bulldogs joined the upstart NSIC in 1996 and have claimed the league crown five times (1997, 1998, 2001-03) as well as five conference tournament titles (1997, 1998, 2001, 2003, and 2009) in 14 seasons of NSIC competition (The Bulldogs spent four seasons in the now-defunct North Central Conference from 2004-07). Cane has twice led UMD to unblemished conference marks (1997 and 2003) and both teams been named the NSIC Coach of the Year.

Cane and the Bulldogs took a big step in officially establishing themselves as a legitimate program when the team claimed its first-ever national ranking in 1999. One year later, UMD set a team record with 17 wins and would be ranked as high as eighth nationally en route to capturing the program's first NCAA Tournament berth. The team matched that win total in 2013 and made its biggest splash yet in the postseason, hosting the NCAA II Central Region Tournament

where it knocked off No. 22-ranked Winona State 1-0 in the second round (As the top seed, UMD received a bye in the opening round) and Southwest Minnesota 2-0 in the regional final before being knocked off by eventual NCAA II National Champion Grand Valley State, 2-1, in the quarterfinals.

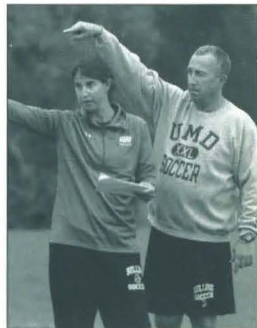
For a three-year period, Cane doubled as the head coach of UMD women's tennis starting in 1995. Under the watch of Cane, the Bulldogs produced a 30-15 overall record and won three-straight NSIC titles. In his first season, UMD set a single-season record for victories and winning percentage with a 15-2 mark as the Bulldogs made their first-ever appearance in the NCAA Division II Midwest Regional. For his efforts, Cane was named the 1995 NSIC Coach of the Year.

Following his graduation from Duluth's Cathedral High School, Cane played varsity soccer for three seasons at the College of St. Scholastica. After graduating from CSS in 1983 with bachelor's degrees in both secondary education and history, he remained at his alma mater as the head coach of the men's soccer varsity team.

In his nine years with the Saints, Cane rolled up a 106-53-12 mark while winning two National Small Colleges Athletic Association National Championships and five NAIA District 12 titles. The 1988 NSCAA Coach of the Year Award recipient averaged 12 wins per campaign with CSS and endured just one losing season. Cane later played an integral role in establishing the St. Scholastica women's soccer program in 1990 and posted an overall mark of 15-35-2 as the team's head coach from 1990-93. In September 2013, Cane was inducted into the St. Scholastica Athletic Hall of Fame.

Cane lives in Duluth with his wife, Patti. Their daughter, Amanda, is a 2011 graduate of St. Scholastica and owns JaneCane Photography in Duluth.

YEAR	OVERALL				CONFERENCE				FINISH	YEAR	OVERALL				CONFERENCE				FINISH
	W	L	T	PCT.	W	L	T	PCT.			W	L	T	PCT.	W	L	T	PCT.	
1994	2	4	1	.357						2005*	8	11	0	.421	3	9	0	.250	5th
1995	13	4	1	.750						2006*	8	8	3	.500	4	6	2	.417	5th
1996	10	9	1	.525	2	2	0	.500	3rd	2007*	7	9	1	.441	5	5	1	.500	3rd
1997	11	4	2	.706	4	0	0	1.000	1st	2008	7	11	2	.400	7	4	2	.615	5th
1998	11	5	0	.688	5	1	0	.830	1st	2009	17	3	2	.818	11	1	1	.885	2nd
1999	14	3	1	.806	8	1	0	.889	2nd	2010	12	6	2	.650	10	3	0	.769	2nd
2000	17	2	2	.857	8	0	1	.944	T-1st	2011	11	6	1	.676	10	3	0	.769	3rd
2001	15	4	1	.775	7	1	1	.833	1st	2012	8	7	3	.528	7	5	3	.567	8th
2002	15	5	2	.727	8	1	0	.889	1st	2013	17	5	1	.761	12	3	0	.800	3rd
2003	14	3	3	.775	8	0	0	1.000	1st	2014	9	10	1	.475	8	6	1	.567	7th
2004*	3	8	4	.333	1	4	1	.250	6th	<b>NSIC: 115-31-9 (.771)</b>									
<b>TOTALS: 229-127-34 (.631)</b>										<b>*UMD competed in the North Central Conference from 2004-07.</b>									



# Duluth Starts Here

340 Sleeping Rooms including Two-Room Suites,  
Two-Bedroom Suites and Executive Rooms on  
Key Access Floors

Skywalk Access to the DECC, AMSOIL Arena,  
Canal Park and Downtown Duluth

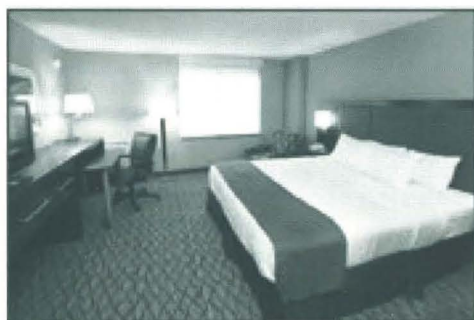
Complimentary Covered Parking,  
Electric Car Charging and Tesla Superchargers

Complimentary Wi-Fi

Three Restaurants, Two Pools

12,000 Sq. Ft. of Flexible Meeting Space

Call to make your reservation today!



*Holiday Inn & Suites*

DULUTH DOWNTOWN

200 West First Street | Duluth, MN 55802  
218-722-1202 | 800-477-7089 | [www.holidayinn.com/duluthmn](http://www.holidayinn.com/duluthmn)



# COACHES & SUPPORT STAFF



## KELLY GRGAS-WHEELER

ASSISTANT COACH, 12TH SEASON

A name certainly familiar to those in the Duluth area soccer circles, Kelly Grgas-Wheeler returns for her 12th season with the Bulldogs in 2015.

The longest-serving UMD assistant in program history, Grgas-Wheeler joined the Bulldog staff in 2004 with four years of previous high-level collegiate coaching experience tucked under her belt. That included a two-season assistant stint at NCAA Division-I University of Texas El Paso. While in El Paso, she helped mold the Miners into one of the most potent offensive clubs in the nation (UTEP led the nation in goals scored in 2002). In addition to duties behind the bench, her responsibilities with the Miners also consisted of scheduling, game management and recruiting. Before accepting the UTEP post, Grgas-Wheeler was an assistant coach at Cochise College (Ariz.) for two years.

She also served as an assistant coach at her alma mater, Ottawa (Kan.) University, in 1999 after completing a three-year soccer career at the institution and graduating with a bachelor's degree in English. While in Ottawa, she served as

the Ottawa Middle School head girl's soccer coach in 2000. As a forward at Ottawa, Grgas-Wheeler was a three-time All-Kansas Collegiate Athletic Conference (KCAC) First Team selection (1996-98). A two-year captain, she was voted the team's Most Valuable Player three times while rewriting the school's record books. She left Ottawa owning all-time marks for goals, assists, and points and still owns the number three mark for assists in a season (10 in 1997) and the eight spot for points in a single season (32 in 1997). Grgas-Wheeler was also a four-year letterwinner for the Braves on the basketball court.

Grgas-Wheeler received her NSCAA National Diploma in June of 2007. Locally, she has spent the last 12 summers in the Duluth area as a Gitchi Gummi Club soccer coach. She has led a pair of club teams to the MYSA state tournament, claiming a U-13 state title in 2003 and guiding a second youth squad to the state tournament in 2010.

Grgas-Wheeler is a graduate of Duluth East High School and also serves as the women's hockey sports information director at UMD. She lives in Duluth with her sons, Luka and Lachlan, born in June 2015.

## SPORTS PERFORMANCE STAFF



**CHARLA BUxbaUM**  
Athletic Trainer



**DR. XAN CORVILLE**  
Team Surgeon



**DR. SAM HOKIE**  
Team Surgeon



**DR. JUSTIN CUMMINS**  
Team Surgeon



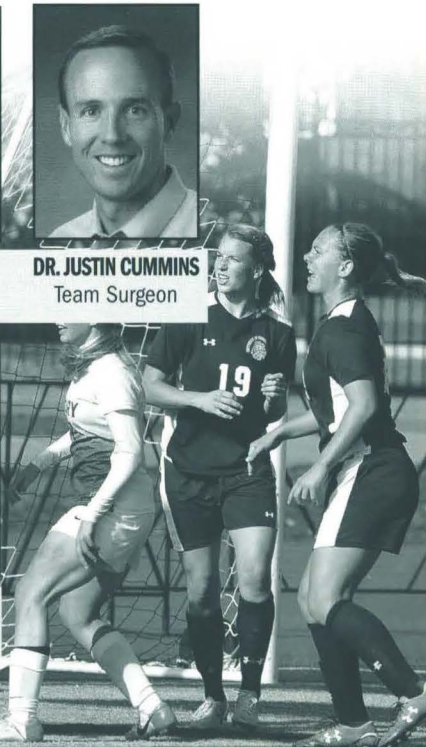
**DR. BEN NELSON**  
Team Physician

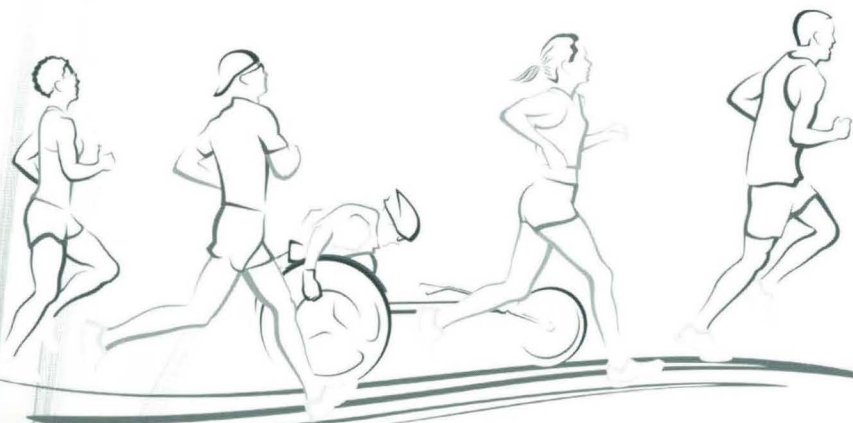


**DR. JAY BUTCHER**  
Team Physician



**DR. ANN SUDOH**  
Team Physician





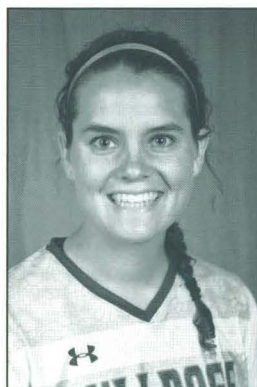
# Endurance.

Still running after all these years...

113 to be exact.

**LAMAR**  
**OUTDOOR ADVERTISING**





## KATE McMAHON

SENIOR FORWARD · 5-7 · FITCHBURG, WISCONSIN (MADISON EDGEWOOD H.S.)

SEASON	GP	MINUTES	GOAL	ASSIST	POINTS	SHOT	SOG	SOG%	GWG
2012	10	97	0	0	0	2	2	1.00	0
2013	10	169	0	0	0	3	1	.333	0
2014	13	352	0	0	0	2	1	.500	0
TOTAL	33	618	0	0	0	7	4	.571	0

### BULLDOG CAREER

**2014 (JUNIOR)** Appeared in 13 games for the Bulldogs, a career-high, including the first two starts of her career · had a shot on-goal against Southwest Minnesota State on Oct. 5 · had won shot in UMD's 2-0 victory over Bemidji State on Oct. 31 · NSIC All-Academic Team selection.

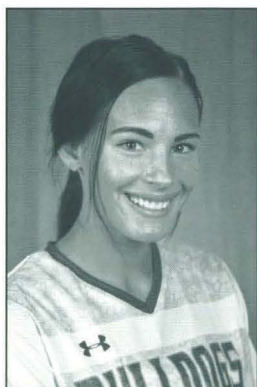
**2013 (SOPHOMORE)** Appeared in 10 games for UMD · had a pair of shots in UMD's 4-0 win over U-Mary on Oct. 13 · named to NSIC All-Academic Team.

**2012 (FRESHMAN)** Played in 10 games during her debut season with the Bulldogs · had a season-high two shots on goal against Minnesota-Crookston (Oct. 26).

### BEFORE UMD

Spent three years at forward with the highly successful Madison Edgewood prep team under coach Chris Martinelli · helped Edgewood to state titles in 2009 and 2011, registering a pair of game-winning goals at the 2011 state tournament · garnered an all-conference honorable mention selection as a senior.

**PERSONAL** Born Katherine Renee McMahon in Fitchburg, Wis. · daughter of Joseph and Susan McMahon · has one sister (Kelly) and one brother (Jack) · majoring in biochemistry at UMD.



## LEAH NESHEIM

SENIOR MIDFIELDER · 5-7 · EAGAN, MINNESOTA (EASTVIEW H.S.)

SEASON	GP	MINUTES	GOAL	ASSIST	POINTS	SHOT	SOG	SOG%	GWG
2012	16	339	1	0	2	8	6	.750	0
2013	16	368	0	1	1	3	1	.333	0
2014	5	260	0	0	0	2	1	.500	0
TOTAL	37	967	1	1	3	13	8	.615	0

### BULLDOG CAREER

**2014 (JUNIOR)** Appeared in five games for UMD including three starts before being sidelined with an injury · took two shots, including one on-target against Northern Michigan on Sept. 12 · started three-straight games from Sept. 7-14.

**2013 (SOPHOMORE)** Appeared in 16 matches, including one start, for the Bulldogs · earned her first career assist in UMD's 5-0 win over Wayne State on Oct. 4 · had a shot on-goal in UMD's 3-2 win over Augustana.

**2012 (FRESHMAN)** Appeared in 16 games off the bench during her debut season with UMD · scored her first career goal in the Bulldogs' 6-0 victory over Sioux Falls (Sept. 23) · had two shots on-goal, a season-high, against U-Mary (Oct. 6)

### BEFORE UMD

Started three years for the Eastview Lightning · earned an All-South Suburban Conference honorable mention selection in 2010 · earned All-Conference honors and helped Eastview to the state tournament as a senior captain · finished fifth in all-time scoring at Eastview · named to the All-State track team in 2011.

**PERSONAL** Born Leah Kristine Nesheim on April 28, 1994 in Burnsville, Minn. · daughter of Greg and Sue Nesheim · has one sister (Sarah) and a brother (Kyle) · undecided on a major at UMD.





## MARISSA GANSKE

JUNIOR MIDFIELDER · 5-3 · EAGAN, MINNESOTA (EAGAN H.S.)

SEASON	GP	MINUTES	GOAL	ASSIST	POINTS	SHOT	SOG	SOG%	GWG
2013	23	1141	2	5	9	21	12	.571	0
2014	20	1392	2	2	6	48	17	.354	1
TOTAL	43	2533	4	7	15	69	29	.420	1

### BULLDOG CAREER

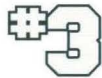
**2014 (SOPHOMORE)** Appeared in all 20 games for the Bulldogs, including 17 in the starting line-up · finished with the most points among returners, six, with two goals and two assists on the season · netted the game-winner in UMD's 2-0 victory over Bemidji State on Oct. 31 · scored a goal on five shots as the Bulldogs handed MSU-Moorhead a 4-0 defeat on Sept. 20 · earned an assist in back-to-back games on Oct. 5 and 11 against Southwest Minnesota State and Wayne State (Neb.) · NSIC All-Academic team selection.

**2013 (FRESHMAN)** Appeared in all 23 games for the Bulldogs including five starts · finished tied for fourth on the team in points · scored her first collegiate goal in UMD's 2-1 win over Sioux Falls on Sept. 28 · notched her first career assist against NCAA I North Dakota State on Sept. 8 · had an assist in two playoff games, including in the NSIC Tournament Championship game against Minnesota State Mankato on Nov. 10.

### BEFORE UMD

A 2013 graduate of Eagan High School · was coached by Mark Obarski and played alongside fellow newcomer Kaleigh Solheim for three years at EHS · named to the all-tournament team during the Wildcats' state tournament run in 2010 · racked up a bevy of honors in her first full high school season as a sophomore, claiming honorable mentions in the Pioneer Press all-state team and the all-South Suburban conference team · highly touted as an offensive machine, leading the team in scoring en route to team MVP and Offensive Player of the Year honors as a junior · maintained her offensive explosion by ending her prep career with all-conference honors in addition to being named the team's MVP for the second consecutive season.

**PERSONAL** Born Marissa Sue Ganske on April 4, 1995 in Burnsville, Minn. · daughter of John and Sharon Ganske · has one older sister (Camey) and three half-siblings (Janet, Jason, and Jamie) · undecided on a major at UMD.



## SKYE FINLEY

JUNIOR DEFENDER · 5-3 · FOREST LAKE, MINNESOTA (FOREST LAKE H.S.)

### BULLDOG CAREER

Finley sat out the 2014 season due to transfer restrictions, coming from St. Cloud State University.

### BEFORE UMD

**2013 (FRESHMAN)** Started all 18 matches for St. Cloud State · earned her first collegiate point with an assist on Sept. 22 against Upper Iowa · scored her first collegiate goal at Concordia-St. Paul on Oct. 20 · named team's most valuable defensive player and newcomer of the year.

**HIGH SCHOOL** A 2013 graduate of Forest Lake Senior High School · started four seasons and was twice team captain for the Rangers · named All-East Suburban Conference in 2010 and 2011 and an all-conference honorable mention in 2012 · named rookie of the year as a freshman · also participated in track & field and lacrosse at Forest Lake.

**PERSONAL** Born Skye Shannon Finley on May 4, 1995 · daughter of Julie and Kevin Finley · has two brothers, Brad and Evan · earned an academic letter in each of her four years at Forest Lake and made the honor roll · plans to major in marketing and graphic design at UMD.





## KAILEY BEATT

JUNIOR FORWARD · 5-7 · MAPLE GROVE, MINNESOTA (MAPLE GROVE H.S.)

SEASON	GP	MINUTES	GOAL	ASSIST	POINTS	SHOT	SOG	SOG%	GWG
2013	18	334	1	1	3	15	4	.267	0
2014	18	625	1	0	2	18	8	.444	1
TOTAL	36	959	2	1	5	33	12	.364	1

### BULLDOG CAREER

**2014 (SOPHOMORE)** Appeared in 18 games including a pair of starts for UMD · netted the game-winner in the Bulldogs' 1-0 NSIC tournament upset of Augustana (S.D.) on Nov. 5 · took a season-high four shots against St. Cloud State on Sept. 14 and Northern State on Sept. 21 · started her first collegiate game on Sept. 20 at MSU-Moorhead, a 4-0 Bulldog victory.

**2013 (FRESHMAN)** Appeared in 18 matches as a reserve forward for UMD · scored her first collegiate goal in a 5-0 victory over Wayne State on Oct. 4 · tallied her first assist in UMD's 2-1 win over Northern State on Oct. 27 · had a career-high four shots against U-Mary on Oct. 13.

### BEFORE UMD

A 2013 graduate of Maple Grove High School · was a four-year starter at forward and lettered each year · assisted in the club's first Northwest Suburban Conference championship in seven years in 2012 · attained all-conference and all-state statuses in her final two seasons with the crimson · wrapped up the Star Tribune's all-metro honors in 2012 · was given the award of Offensive MVP in her senior campaign, leading MGHS with 15 goals and 9 assists · leaves the program third all-time in goals and second in assists.

**PERSONAL** Born Kailey Allaine Beatt on Sept. 1, 1994 in St. Louis Park, Minnesota · daughter of Russell and Kimberly Beatt · has one older sister, Andrea, who played collegiate soccer in Duluth at St. Scholastica · enjoys boating and reading outside of soccer · majoring in pre-law at UMD.

# #10



## JACKIE SORENSON

JUNIOR DEFENDER · 5-5 · HASTINGS, MINNESOTA (HASTINGS H.S.)

SEASON	GP	MINUTES	GOAL	ASSIST	POINTS	SHOT	SOG	SOG%	GWG
2013	11	234	0	0	0	-	-	-	0
2014	7	233	0	0	0	-	-	-	0
TOTAL	18	467	0	0	0	-	-	-	0

### BULLDOG CAREER

**2014 (SOPHOMORE)** Appeared in seven games for the Bulldogs as a reserve defender · played in six straight games to begin the season before missing time due to injury · returned to the line-up on Nov. 2 against Minnesota-Crookston in the season finale.

**2013 (FRESHMAN)** Appeared in 11 matches off the bench for UMD in her first official year with the team.

Sorenson received a redshirt as a first-year player in 2012.

### BEFORE UMD

A 2012 graduate of Hastings High School · served as a two-year captain and four-year starter for the Raiders of Hastings HS · named best defender and team's MVP in her sophomore season · received All-Conference Honorable Mention in sophomore year and All-Conference selection in both junior and senior seasons · selected to Minnesota Section 3AA All-Tournament Team three straight seasons (2010-12).

**PERSONAL** Born Jackie Elizabeth Sorenson on Jan. 6, 1994 in St. Paul, Minn. · daughter of Lori and Stan Sorenson · participated in show choir and link crew · has three sisters, Jenna, Kristin, and Nicole, the last a graduate of UMD · hobbies include shopping and fishing.

# #11

red rock  
SPORTS RADIO NETWORK

**BULLDOG**  
SPORTS NETWORK



# RED ROCK RADIO BULLDOG SPORTS NETWORK

Visit [921thefan.com](http://921thefan.com) for the station in your area!

Listen LIVE to UMD Football and Hockey on 921 The Fan! Catch games on the Red Rock Radio BULLDOG SPORTS NETWORK: KQ 105.5 in the Grand Rapids area, KQ 106.7 in Ely and Babbitt, Red Zone Sports Radio 910 in Aitkin, and 105.7 The Fan out of Siren/Pine City.

Catch The UMD Coaches Show LIVE from Buffalo Wild Wings in Duluth every Wednesday at 6:30 with Bruce Ciskie. Hear it on 921 The Fan and on the iHeartRadio app!

## Monday-Friday Program Schedule:

In Grand Rapids and in the Ely/Babbitt area listen to UMD Sports on KQ 105.5 and KQ 106.7!

Midnight to 5:30 am: FOX Sports Radio

5:30 am to 9 am: Power Trip Morning Show

9 am to Noon: Paul Allen (P.A.)

Noon to 3 pm: Dan Cole "The Common Man"

3 pm to 6:30 pm: Bumper to Bumper with  
Dan Barreiro

Fox Sports Radio: Nights and Weekends!

Hear UMD sports LIVE on the  
FREE iHeartRadio app!

# LISTEN TO WHAT WINNING SOUNDS LIKE



Classic Rock  
**KQ 105.5**  
GRAND RAPIDS & THE BORN RANGE

**KQ 106.7**  
ROCK OF THE RANGE  
Babbitt • Ely • Virginia

red zone 910  
Sports Radio Network  
ROCK OF THE RANGE





**TEAM CAPTAIN**

## KATIE PETERSON

JUNIOR FORWARD • 5-7 • EAGAN, MINNESOTA (EAGAN H.S.)

SEASON	GP	MINUTES	GOAL	ASSIST	POINTS	SHOT	SOG	SOG%	GWG
2012	15	381	0	1	1	14	7	.500	0
2014	7	164	0	0	0	3	0	.000	0
TOTAL	22	545	0	1	1	17	7	.412	0

### BULLDOG CAREER

**2014 (SOPHOMORE)** Appeared in seven games for the Bulldogs, including one start, while missing time due to injury · returned to the UMD line-up in the season opener after missing the entire 2013 season and suffered another knee injury just 23 minutes in her season · opted to rehab during the season, returning to the Bulldog line-up in a starting role on Sept. 20 against MSU-Moorhead · had two shots in UMD's regular season finale against Minnesota-Crookston on Nov. 2 · voted the team's most inspirational player for a second-straight season and received Bulldog Award for "embodying the spirit of the Bulldog" · NSIC All-Academic Team selection.

*Peterson received a medical redshirt in 2013 after suffering a preseason knee injury.*

**2012 (FRESHMAN)** Played in 15 games during her debut season with the Bulldogs · Earned her first career assist in UMD's 6-0 victory over Sioux Falls (Sept. 23) · Took a season-high four shots against Wayne State (Sept. 30).

### BEFORE UMD

Spent two years as a starter at midfield, helping the Eagan Wildcats win the South Suburban Conference and reach the state tournament as a junior in 2010 · Received an All-Conference honorable mention selection that fall, in addition earning a spot on the Section 3AA All-Academic team · earned an honorable mention nod from the South Suburban conference and a spot on the Section 3AA All-Academic team again as a senior in 2011.

**PERSONAL** Born Kathryn Ann Peterson on Jan. 25, 1994 in Burnsville, Minn. · daughter of Paul and Pat Peterson · has an older brother (Michael) and an older sister (Laura).

# #13



## TAYLOR JOHNSON

SOPHOMORE FORWARD • 5-7 • WHITE BEAR LAKE, MINNESOTA (WHITE BEAR LAKE H.S.)

SEASON	GP	MINUTES	GOAL	ASSIST	POINTS	SHOT	SOG	SOG%	GWG
2014	19	667	0	0	0	6	2	.333	0
TOTAL	19	667	0	0	0	6	2	.333	0

### BULLDOG CAREER

**2014 (FRESHMAN)** Appeared in 19 games including three starts for UMD · voted team's most improved player by teammates after the season · started three of the last four games for the Bulldogs, including both playoff games · had one shot in each of UMD's opening weekend games against Southwest Baptist and Central Missouri on Sept. 5-7.

*Johnson received a redshirt as a first-year player in 2013.*

### BEFORE UMD

A graduate of White Bear Lake Area High School · played with senior Dani Potter for a year at White Bear Lake · played four years as a varsity midfielder and a forward, serving as the team captain in her last season with the Bears · displayed great field awareness and passing, leading the team in assists and earning all-conference recognition as a senior · received the Academic award each year in high school for maintaining a 3.7 GPA or higher · hobbies include volunteering as a youth leader at church and playing recreational softball.

**PERSONAL** Born Taylor Rose Johnson on June 8, 1995 in White Bear Lake, Minn. · is the daughter of Bob and Paula Johnson · has one older sister (Aleisha) · plans to major in biochemistry and psychology at UMD.

# #8



## EMILY FLEISSNER

SOPHOMORE DEFENDER • 5-9 • DULUTH, MINNESOTA (DENFELD H.S.)

SEASON	GP	MINUTES	GOAL	ASSIST	POINTS	SHOT	SOG	SOG%	GWG
2014	17	1024	0	1	1	1	1	1.00	0
TOTAL	17	1024	0	1	1	1	1	1.00	0

### BULLDOG CAREER

**2014 (FRESHMAN)** Appeared in 17 games, including eight starts, for the Bulldogs in her debut season · started eight straight games from Sept. 28 until Oct. 23 for UMD · averaged 57 minutes of action in UMD's two playoff games against Augustana on Nov. 5 and Winona State on Nov. 7 · earned her first collegiate assist on Oct. 4 in the Bulldogs' 1-0 victory over Sioux Falls · had her first shot on-goal of the season a day later against Southwest Minnesota State.

### BEFORE UMD

A 2014 graduate of Denfeld High School · started three years at center midfield and served as a two-year captain of the Hunters · led Denfeld to the Minnesota State High School League tournament in 2013 · earned All-Lake Superior Conference honors as a junior and senior · named All-Area by the Duluth News Tribune in 2013 · played club soccer for Gitchi Gummi and UMD assistant Kelly Grgas-Wheeler · also played guard on the Denfeld basketball team.

**PERSONAL** Born Emily Rachel Fleissner on Apr. 29, 1996 in Duluth · daughter of Kelly and Betty Fleissner · one of three Fleissner sisters along with Anna and Sarah · attended UMD full-time during her senior year of high school · mother, Betty, is an instructor at UMD and an alum of Bulldog basketball and volleyball while father, Kelly, played football at UMD · member of Key Club, Link Crew, and National Honor Society · majoring in Environmental and Outdoor Education.

# #15



## HAILEY HOFF

SOPHOMORE FORWARD • 5-3 • HERMANTOWN, MINNESOTA (HERMANTOWN H.S.)

SEASON	GP	MINUTES	GOAL	ASSIST	POINTS	SHOT	SOG	SOG%	GWG
2014	5	106	0	0	0	1	1	1.00	0
TOTAL	5	106	0	0	0	1	1	1.00	0

### BULLDOG CAREER

**2014 (FRESHMAN)** Appeared in five games during her first season with the Bulldogs · directed her first collegiate shot on goal in UMD's 3-0 victory over U-Mary on Oct. 19 · played 50 minutes of action against Minnesota-Crookston on Nov. 2.

### BEFORE UMD

A 2014 graduate of Hermantown High School · started three years for Coach Scott Larson and the Hawks · earned first team All-Minnesota State and All-Lake Superior Conference honors each of the past two seasons · two-time Duluth News Tribune Player of the Year.

**PERSONAL** Born Hailey Ann Hoff on May 16, 1996 in Denver, Colo. · daughter of Jenn and Dale Hoff · has two sisters, Kylie and Tegan · also participated in Link Crew and was a member of National Honor Society · undecided on a major at UMD.

# #16



## NICOLE BECKER

SOPHOMORE MIDFIELDER · 5-6 · CHANHASSEN, MINNESOTA (CHANHASSEN H.S.)

SEASON	GP	MINUTES	GOAL	ASSIST	POINTS	SHOT	SOG	SOG%	GWG
2014	7	96	0	0	0	-	-	-	0
TOTAL	7	96	0	0	0	-	-	-	0

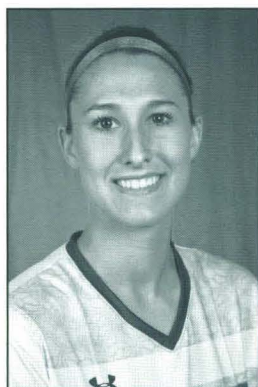
### BULLDOG CAREER

**2014 (FRESHMAN)** Appeared in seven games for the Bulldogs during her first official season on the field · played a season-high 35 minutes as UMD drew scoreless against Minnesota-Crookston in the regular season finale on Nov. 2.

Becker received a redshirt as a first-year player in 2013.

### BEFORE UMD

A graduate of Chanhassen High School · played four seasons for the Storm of the Missota Conference along with current freshman keeper Jordan Melby · laced up her cleats as a midfielder under the direction of head coach Jon Peterson · was an All-Missota conference



honorable mention selection · received the Storm award and was the team captain in her senior campaign · also played defense on the Chanhassen varsity lacrosse team her freshman year.

**PERSONAL** Born Nicole Ryan Becker on Dec. 11, 1994 in Forest Lake, Minn. · daughter of John and Denise Becker · has one younger brother and sister (Katy and Luke) · plans to major in exercise science at UMD.

# #17

## ANNA MORRISON

SOPHOMORE MIDFIELDER · 5-6 · WHITE BEAR LAKE, MINNESOTA (WHITE BEAR LAKE H.S.)

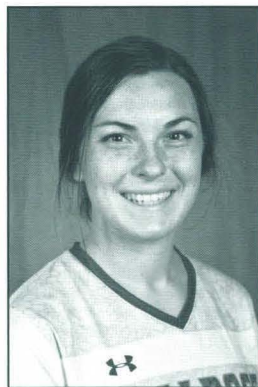
SEASON	GP	MINUTES	GOAL	ASSIST	POINTS	SHOT	SOG	SOG%	GWG
2014	5	121	0	0	0	-	-	-	0
TOTAL	5	121	0	0	0	-	-	-	0

### BULLDOG CAREER

**2014 (FRESHMAN)** Appeared in five games for the Bulldogs during her first season at UMD · played a season-high 62 minutes in the Bulldogs' scoreless tie against Minnesota-Crookston in the regular season finale on Nov. 2.

### BEFORE UMD

A 2014 graduate of White Bear Lake Area high school · started three seasons at midfield and defense for coach John Dierkhising and the Bears · named All-Suburban East Conference Honorable Mention during her senior campaign · appeared in the Minnesota State High School League title game as a junior, and was selected to the All-Tournament



Team · selected all Section 4AA All-Tournament team during her sophomore season · played for the St. Croix Academy club team.

**PERSONAL** Born Anna Caroline Morrison on July 4, 1996 in Englewood, Colo. · daughter of Tim and Laura Morrison · has one younger sister, Melayna · three-time recipient of the Academic Excellence Award at White Bear Lake · great grandfather played football at NCAA I Marquette University and cousin played baseball for NCAA I George Washington University · plans to major in education at UMD.

# #21

TWIN PORTS  
nightlife.com



DO YOU KNOW WHAT YOU'RE  
DOING AFTER THE GAME??

FIND OUT WHAT'S HAPPENING  
AROUND THE TWIN PORTS TONIGHT  
BY LOGGING ON TO THE  
NORTHLAND'S #1  
ENTERTAINMENT WEBSITE!

TWINPORTSNIGHTLIFE.COM

TWIN PORTS  
nightlife.com



PROUD TO SUPPORT THE UMD BULLDOGS FOR 9 YEARS IN A ROW!





## JORDAN MELBY

SOPHOMORE GOALKEEPER · 5-10 · CHANHASSEN, MINNESOTA (CHANHASSEN H.S.)

SEASON	GP	MINUTES	GA	GAA	SAVES	SV%	W-L-T	SHO
2014	4	360:00	6	1.50	18	.750	1-3-0	1
TOTAL	4	360:00	6	1.50	18	.750	1-3-0	1

### BULLDOG CAREER

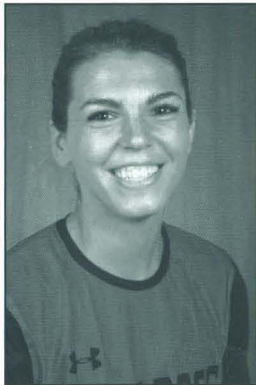
**2014 (FRESHMAN)** Started four games between the pipes for UMD early in her first official season · finished with a 1.50 goals against average and 18 saves on the season · started her first collegiate game in the season opener against Southwest Baptist, making four saves · stopped a season-high nine balls against Upper Iowa on Sept. 27 · earned her first collegiate shutout in UMD's 4-0 win over MSU-Moorhead on Sept. 20.

Melby received a redshirt as a first-year player in 2013.

### BEFORE UMD

A graduate of Chanhassen High School · played alongside fellow newcomer Nicole Becker during her prep career · was the team captain and team MVP while receiving All-Missota Conference and all-state honors during her senior season · capped off her sophomore season with all-conference honorable mention and most improved player award at CHS · also lettered in two different sports, twice hitting the links for the storm, earning most improved player and once running the 4x200 relay and triple jump · was a member of FCA, Key Club, DECA, CAP and Link Crew at Chanhassen.

**PERSONAL** Born Jordan Elizabeth Mae Melby on Dec. 1, 1994 in Burnsville, Minn. · daughter of Jeff and Charla Melby · has one younger sister (Dylan) · plans to major in communications at UMD.



  
**COUNTRY**  
INN & SUITES  
BY CARLSON®

I love this Country.™

**Duluth-North**

4257 Haines Road  
Duluth, MN 55811

**218-740-4500**

[www.countryinns.com/duluthmn\\_north](http://www.countryinns.com/duluthmn_north)

# **WIN \$12,500 While Supporting Bulldog Athletics!**



11th Annual

## **WALLEYE CLASSIC**

May 21<sup>st</sup> 2016 ~ Lake Vermilion ~ Tower, Minnesota

- **Minnesota's biggest one-day Walleye Tournament**
- **Fish with UMD Bulldog coaches Scott Sandelin & Curt Wiese**
- **Over \$40,000 in cash & prizes paid with \$12,500 guaranteed to winning team**
- **Proceeds in part support Bulldog Athletics**

**[www.cityautoglass.com/walleyeclassic](http://www.cityautoglass.com/walleyeclassic)**

Produced by The CAG Foundation, a 501(c)3 non-profit organization.



## RONI RUDDOLPH

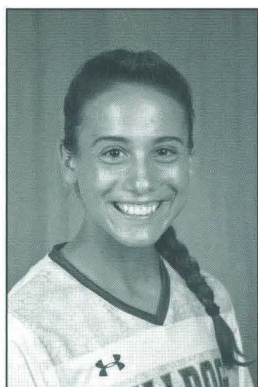
FRESHMAN GOALKEEPER · 5-7 · DULUTH, MINNESOTA (DULUTH EAST H.S.)

### BEFORE UMD

A 2015 graduate of Duluth East High School · played three seasons and started two for the Greyhounds · voted team captain in 2014 and received the Team Player award · earned a Kernz All-Star selection · played on East Select club soccer team · also played basketball, starting two seasons as a guard for Duluth East.

**PERSONAL** Born Veronica Louise Rudolph on March 13, 1997 in Duluth, Minnesota · daughter of Kristina and John Rudolph · youngest of three siblings (Joshua and Kaitlyn) · member of National Honor Society and Hound Pack · active in Relay for Life and the Walk to End Alzheimer's · both parents and older sister each attended UMD · plans to major in education with a minor in coaching at UMD.

#1



## LYLA ABUKHODAIR

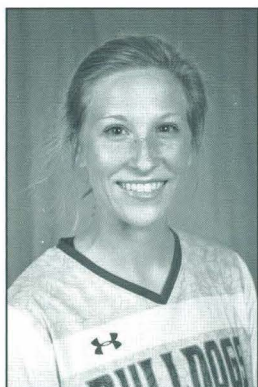
FRESHMAN FORWARD · 5-4 · DULUTH, MINNESOTA (HERMANTOWN H.S.)

### BEFORE UMD

A 2015 graduate of Hermantown High School · started all four seasons for the Hawks · earned All-Lake Superior Conference First Team selection during her final three seasons at Hermantown · served as team captain her senior year · an All-State nominee her senior season · played on the Hermantown club soccer team · earned six letters in track & field with five seasons on the All-Conference first team, and also two All-Conference selections in three seasons of Nordic Skiing.

**PERSONAL** Born Lyla Ann Abukhodai on Dec. 21, 1996 in Duluth, Minnesota · daughter of Ann and Bassam Abukhodair · youngest of three siblings: Sami, Zac, and Isak · also participated in National Honor Society and Link Crew in high school · plans to major in psychology with a minor in communications at UMD.

#2



## LAURA EDGREN

FRESHMAN MIDFIELDER · 5-3 · APPLE VALLEY, MINNESOTA

### BEFORE UMD

A 2015 graduate of Apple Valley High School · started four seasons on the field for the Eagles · served as team captain her senior season · earned an All-South Suburban Conference selection in 2014 and an All-Conference Honorable Mention in 2013 · played for Minnesota Thunder Academy club soccer team · also played hockey as a center for the Eagles.

**PERSONAL** Born Laura Lyn Edgren on April 16, 1997 in Burnsville, Minnesota · daughter of Marti and Brian Edgren · has two sisters, Alissa and Anna · undecided on a major at UMD.

#4



## LOGAN NASH

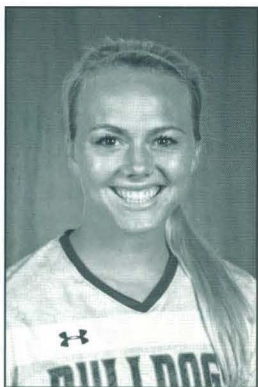
FRESHMAN FORWARD · 5-5 · VAIL, COLORADO (BATTLE MOUNTAIN H.S.)

### BEFORE UMD

A 2015 graduate of Battle Mountain High School · played three seasons for the Huskies · selected to All-Colorado State First Team in 2013 · earned All-4A Conference selection in 2011 · voted team MVP · also played three seasons of basketball for Battle Mountain as a guard.

**PERSONAL** Born Logan Elizabeth Nash on June 28, 1997 in Vail, Colorado · daughter of Kristen and David Nash · has two siblings, Parker and Sage · uncle, Bob Dahl, played football for UMD · grandfather, Steve Nash played hockey for the University of Minnesota · also participated in Future Business Leaders of America in high school · undecided on a major at UMD.

# #9



## NATALIE ST. MARTIN

FRESHMAN MIDFIELDER · 5-6 · DELLWOOD, MINNESOTA (MAHTOMEDI H.S.)

### BEFORE UMD

A 2015 graduate of Mahtomedi High School · played three seasons for the Zephyrs · named All-Metro East Conference selection · participated in the Minnesota State tournament · played for St. Croix Academy club soccer team · also participated in cross country, earning an All-Conference selection, as well as hockey and track & field, where she earned an All-Metro East Honorable Mention.

**PERSONAL** Born Natalie Christine St. Martin on Feb. 25, 1997 in St. Paul, Minnesota · daughter of Lynda and Scott St. Martin · has one sister, Tori · participated in National Honor Society and Students Against Destructive Decisions (SADD) in high school · plans to major in engineering at UMD.

# #12



## MADISON CAREY

FRESHMAN MIDFIELDER · 5-7 · MAPLE GROVE, MINNESOTA (MAPLE GROVE SENIOR H.S.)

### BEFORE UMD

A 2015 graduate of Maple Grove Senior High School · played four seasons, three as a starter, for the Crimson · received an All-Northwest Suburban Conference selection her junior season, and All-Conference honorable mentions her senior and sophomore seasons · played for the North Suburban Soccer Association Blast club soccer team, the three-time State Cup champions.

**PERSONAL** Born Madison Marie Carey on Jan. 17, 1997 in Decatur, Illinois · daughter of Shelley and Curt Carey · has one brother, Chase, who played four seasons of soccer at the University of Wisconsin-Superior · undecided on a major at UMD.

# #14



## DESTINY SCHMITZ

FRESHMAN FORWARD · 5-9 · FARMINGTON, MINNESOTA (FARMINGTON H.S.)

### BEFORE UMD

A 2015 graduate of Farmington High School · started all four seasons with the Tigers · selected All-Missota Conference as a junior and All-South Suburban Conference honorable mention as a senior · voted team MVP as a junior · served as team captain as a senior · received Coaches' Choice team award as a junior and senior · played on St. Paul Blackhawks club soccer team · also participated in track & field for three seasons, earning an All-Missota Conference Honorable Mention as a sophomore.

**PERSONAL** Born Destiny Marie Schmitz on Feb 26, 1996 in Mason City, Iowa · daughter of Lonna Daniels and Jim Schmitz · has two siblings, Cody Schmitz and Nick Helland · father and brother each wrestled in college · four-year academic letter winner, member of student council, Fellowship of Christian Athletes, and Students for Christ in high school · plans to major in molecular biology.

# #18



## ERIKA HJORT

FRESHMAN DEFENDER · 5-7 · PINE SPRINGS, MINNESOTA (MAHTOMEDI H.S.)

### BEFORE UMD

A 2015 graduate of Mahtomedi High School · played three varsity seasons on defense for the Zephyrs · earned All-Metro East Conference honors in both her junior and senior campaigns · voted the team's top defender as a junior · played for the NSSA Blast club soccer team, winners of three-straight Minnesota State championships.

**PERSONAL** Born Erika Alecia Hjort on Sept. 3, 1996 in St. Paul, Minnesota · daughter of Theresa Jaros and Sam Hjort · has one sibling, Soren · received highest academic honors in high school · undecided on a major at UMD.

# #19



## LIZZY FONTES

FRESHMAN DEFENDER · 5-5 · APPLE VALLEY, MINNESOTA (EASTVIEW H.S.)

### BEFORE UMD

A 2015 graduate of Eastview High School · played three seasons and started two for Eastview · named team captain her senior season · earned an All-South Suburban Conference Honorable Mention in her senior year · played in conference championship games as a sophomore and junior · voted team award of Ms. Defense her freshman season · played on Dakota Rev club soccer team · also started two seasons in basketball as a point guard and one season as a distance runner in track & field.

**PERSONAL** Born Elizabeth Louise Fontes on July 11, 1997 in Burnsville, Minnesota · daughter of Charlene and Ronald Fontes · has one brother, Matthew · member of LINC (Leaders Interested in Community) during her junior and senior years of high school · undecided on a major at UMD.

# #20

# KOLAR

## AUTOMOTIVE

*"Home to the area's largest selection of new and pre-driven automobiles!"*



*Peter Kolar*  
Kolar Automotive

*Josh Berlo*  
UMD Athletic Director

**KOLAR**  
CHEVROLET • BUICK • GMC

**KOLAR**  
HYUNDAI

**KOLAR**  
TOYOTA • SCION



**PROUD SUPPORTER OF UMD ATHLETICS**



2015-2016

# INSIDE BULLDOG ATHLETICS

## CONTENTS

*This Is Bulldog Country* <

*Making the Grade* <

*Giving Back* <

# BULLDOG COUNTRY

## UMD Athletic Sponsors

### Platinum Level



### Diamond Level



### Gold Level

Acme Tools  
Harley Davidson  
Edgewater  
City Auto Glass  
Sport Clips  
Twin Ports Night Life  
Duluth Sign

Cold Stone Creamery  
Hunt Electric  
Great Clips  
Interstate Batteries  
Arrowhead Printing  
Border States Electric  
Duluth Lawn & Sport

Xerox  
Security Jewelers  
Service Printers  
Grandma's  
The INN  
Compudyne  
Hanco Utilities

Famous Dave's  
Qdoba  
Best Oil Company  
Northwestern Mutual  
Physio  
Tavern on the Hill

### Silver Level

ARCO Coffee  
Fitzer's INN  
Johnson-Mertz  
Goldcross  
UMD Alumni  
Bam Style  
Mainstream Fashions  
Ragstock  
Campus Park

Stewart Taylor  
Timberlodge  
Outback Steakhouse  
On The Limit  
Piedmont Dental  
Chilly Billy's  
H&R Block  
UMD SFA  
UMD Women's Commission

AutoCare Collision Center  
Lake Aire Bottle Shoppe  
Sammy's Pizza  
Papa John's  
API Electric  
DCI Plasma  
JJ Astor  
Duluth Huskies

Bulldog Pizza  
Jersey City  
TCF Bank  
Fox 21  
Veit  
TKDA  
Ticketmaster  
Amsoil  
Hermantown Federal Credit Union

Andersen Windows  
Kernz & Kompany  
Advisor Net  
Cashwise  
NCCYou  
Chipolte  
DECC  
Boulder Ridge

Dubh Linn's  
Woodland Dental  
Ledingham Promotions  
Radisson  
US Bank  
Customer Link  
Tim Cortes  
Summit Ridge





# A WELCOME FROM THE CHANCELLOR

Dear Friends,

On behalf of the University of Minnesota Duluth, I would like to thank you for your support of UMD Athletics.

During its rich 85-year history, UMD Athletics has enjoyed an enormous amount of success. We are extremely proud of the accomplishments of our student-athletes both in their sports and in the classroom. Last academic year, UMD's 412 student-athletes posted an average GPA of 3.18, setting yet another record. Of that group, 99 achieved GPAs of 3.5 or above and 11 turned in perfect 4.0 figures.

It was an honor to see many of you last year. As you generously spend your precious time and resources to cheer on the Bulldog student-athletes, please know that we are dedicated to providing the best possible fan experience. We continue to honor the success and tradition of the generations of Bulldog student-athletes, alumni, season ticket holders, faculty, staff and fans.

I am proud to be a Bulldog fan, and I look forward to seeing you throughout the 2015-16 athletic season.

Go Bulldogs!

A handwritten signature in black ink that reads "Lendley C. Black".

Lendley C. (Lynn) Black  
Chancellor

The logo for the University of Minnesota Duluth, consisting of the letters "UMD" in a bold, maroon, sans-serif font with a gold outline. A small "TM" trademark symbol is located at the bottom right of the letters.



# STEALTH ENGINEERED PRECISION

## HYPERLITE CONSTRUCTION

*Removes excess materials in the taper for zero overlap to create an ultra-low kick-point and blade light balance.*

## ELLIPTICAL PROFILE

*Controls the twisting of the shaft and blade for pinpoint accuracy.*

## EXO-RIM

*Provides added strength and stability to power through the puck for improved velocity and accuracy.*

OFFICIAL EQUIPMENT PROVIDER OF THE  
**UMD** MEN'S AND WOMEN'S  
HOCKEY TEAM

NHL and the NHL Shield are registered trademarks of the National Hockey League. All NHL logos and marks and team logos and marks displayed herein are the property of the NHL and the respective teams and may not be reproduced without the prior written consent of NHL Enterprises. © 2015. All Rights Reserved.



STEALTH  
HYPERLITE  
CX  
ENGINEERED  
PRECISION



**TEXTING WHILE DRIVING WILL** **IMPACT**  
**YOUR LIFE AND THOSE AROUND YOU**

Distracted driving—whether you're texting, surfing the Internet, making a call, adjusting the radio, eating or other distractions—can lead to deadly results for you and those around you.

At Gold Cross we're proud to support Bulldog sporting events and we remind you to make it a safe drive home. We'd rather not be the one responding (with lights and sirens) to your text.

*When you're behind the wheel of your vehicle please play it safe and leave the phone alone.*



**Gold Cross Paramedic Services: the best care for every patient, every day.**

Gold Cross is part of Mayo Clinic Medical Transport, an integrated system of medical care and transportation that also includes Mayo MedLife air ambulance, Mayo One emergency helicopters and Mayo Emergency Communications Center.

©2013 Mayo Foundation for Medical Education and Research | MC2598-09rev0721



*Where all the cool Dogs get their auto glass!*

 **City Auto Glass**

**Your Safety. Our Business.**

Duluth • Hibbing • Grand Marais • Bemidji • Statewide

**[www.cityautoglass.com](http://www.cityautoglass.com)**



# UMD AND THE NORTHLAND



## LIKE NOWHERE ELSE

Hiking amid the dense white pines that grow down to the rocky coast, one can hear the cry of seagulls and the distant wail of a foghorn as the mighty waves crash against the shore, covering the lush green vegetation with a fine mist. A scene out of a remote spot in the Pacific Northwest, right? No, it's Duluth.

Straining against the incessant tug of gravity, you make your way up the steep cobblestone sidewalks of the bustling downtown. The air is filled with the honking horns of cars, cabs and busses. Mingling with the sea air is the wafting scent of freshly baked bread coming from one of the ethnic grocery stores, restaurants, and bakeries in the tightly packed neighborhood. You're walking the streets of San Francisco, right? No, it's Duluth.

The boardwalk is simply alive today. Down the street from the casino, and in front of hundreds of waterfront hotel rooms, there is every mixture of people enjoying the gentle breeze off the water. Tourists mingle with businessmen on their lunch break, and in-line skaters zoom past a mime entertaining the kids as couples check out the galleries and coffeehouses that line the sun-splashed strip. Is it Atlantic City, Miami Beach, or Santa Monica? No, it's Duluth.

## A MEETING PLACE

Centuries before the first Native Americans pitched their teepees and launched their primitive canoes in the waters of the massive lake they called "Gitchee Gummee," there were countless meetings in the place that would come to be known as Duluth. The crashing waves of Lake Superior came here to meet the churning waters of the St. Louis River.

Those meetings of natural forces formed a 10-mile long strand of sand where, on warm summer days, you will find thousands of modern-day Twin Ports visitors shedding the wraps of winter and meeting the rays of the sun.

And that stretch of beach, now known as Park Point, provided a huge natural harbor where everything from tiny canoes to immense ocean-going ships, can find shelter from the wind and waves of the great lake. Around this natural harbor where the lake met the river, cities grew.

Today, Duluth and its Twin Ports partner, Superior, Wisconsin, are viewed as meeting places more than ever.

It is here that small-town truckers in jeans and feed caps haul loads of grain down to the giant elevators next to the docks. More than 1,000 miles from the salt waters of the nearest

ocean, they meet sea captains from ports from every corner of the globe who will haul that wheat, corn, and barley east through the Great Lakes and the St. Lawrence Seaway, then across the Atlantic Ocean to foreign ports.

Mile-long trains loaded with iron ore and taconite pellets from the mines of Minnesota's Iron Range come to Duluth to fill ships (commonly called lakers) that will haul their goods to the steel mills of Indiana, Ohio, and Pennsylvania. There, the ore will be used to make the structural steel for buildings of the future and for the automobile frames being designed for use in the new century.

A vibrant tourism industry brings in countless visitors from throughout the Midwest to shop, eat, relax, and be entertained by the endless variety of things to see and do in and around the Twin Ports. Goods are for sale in every variety, from tiny galleries where local artisans display seagull figurines carved from the driftwood found along the shore of Lake Superior, to sleek modern shopping malls filled with the latest designer fashions.

Diners choose from options like grabbing a quick burger and a soda on their way to the game, or sitting

down to hot coffee, a bowl of steaming chowder and warm apple pie, or savoring prime rib and fine wine at a linen-covered table in a four-star restaurant.

For active visitors, Duluth and the surrounding area offer every kind of outdoor recreation imaginable, from hiking, kayaking, sailing, and biking along the rugged shore of the lake, to first-class downhill and cross-country skiing, snowmobiling, and dog-sledding that takes advantage of the area's common lake-effect snows to provide the finest winter recreation conditions between the Adirondacks and the Rockies.

Dozens of open spaces in and around the city are complemented by a lakewalk that stretches for miles from Canal Park up the North Shore, passing countless parks, monuments, and places to sit and ponder the inland ocean, and providing ample outdoor opportunities for walkers, bikers, skaters, or those who favor a horse-drawn carriage ride. No wonder Outdoor Magazine listed Duluth as the Best Town in America this past June.

And, for those who like to take their entertainment sitting down, Duluth, quite literally, offers something for all

Continued on page 9



## Because sometimes, it's about *conserving* energy.

We know UMD athletes use a lot of energy—whether it's competing on the field or pulling an all-nighter to study for finals. At Minnesota Power, we understand how energy is used and how people can use it more efficiently.

We've helped UMD implement dozens of energy-conservation measures across campus, including at Ianni Hall and the Swenson Science Building, and provided access to energy-efficient lighting through Brighter UMD programs. Efforts like these are part of Minnesota Power's *EnergyForward* plan to build a cleaner, more balanced energy future while keeping electricity reliable and affordable.



AN ALLETE COMPANY

*EnergyForward*



LEARN MORE AT [MNPOWER.COM/ENERGYFORWARD](http://MNPOWER.COM/ENERGYFORWARD)





interests. Broadway entertainment and dozens of movie screens bring the stars of the East and West Coasts to the Twin Ports. National recording artists perform by the shore of the lake during concerts, including the region's annual Bayfest Blues Festival. For the sports fan, Duluth is home to a Northwoods Baseball League franchise, one of the nation's most prominent

marathons each summer, a major dog sled race each winter, and top-level inter-collegiate athletic competition in the form of the 16 teams who wear the maroon and gold of the University of Minnesota Duluth Bulldogs.

When it comes to staying up to date on what's happening around town, around the region, and around the globe, Duluthians enjoy four local television stations, several print media outlets and more radio stations per capita (in every available format) than nearly any community in the nation. Duluth's television and radio stations—which, in terms of geographic reach, are located in one of the country's largest markets—cover news, sports, and weather in the Twin Ports, northern Minnesota and northwestern Wisconsin.

### THOSE WHO CAN... DULUTH

For more than 100 years, the modest teacher's college that has grown and evolved into the University of Minnesota Duluth has been offering students of all ages and interests a

window into the opportunities that come with knowledge.

The University of Minnesota system (which has campuses in Minneapolis, St. Paul, Morris, Rochester and Crookston, as well as Duluth) was started by an act of the Territorial Legislature in 1851, seven years before Minnesota achieved statehood. It took another 44 years before public

higher education came to the north woods with the opening of the Duluth Normal School in 1895. Renamed Duluth State Teacher's College in 1921, the school became a coordinate campus of the University of Minnesota in 1947.

The modern-day UMD has a campus community of nearly 11,100 students pursuing 14 bachelor's degrees in 85 majors and 69 minors, graduate programs in 25 different fields, and three Ph.D. programs.

**A UNIQUE COMBINATION OF QUALITY AND VALUE. UMD CONSISTENTLY RANKS AMONG THE TOP MIDWESTERN, REGIONAL UNIVERSITIES IN U.S. NEWS & WORLD REPORT'S "AMERICA'S BEST COLLEGES" ISSUE.**

In addition, UMD offers a College of Pharmacy program and a two-year program at the School of Medicine through the Minnesota-Twin Cities campus. A university with a unique combination of quality and value, UMD consistently ranks among the top Midwestern, regional universities in U.S. News & World Report's "America's Best Colleges" issue.

Complemented by a staff of about 2,000 employees, including 491 full-time and another 128 part-time faculty, UMD draws students who come to Duluth and call it their home during their college years and beyond. Unlike the sprawling commuter schools of the Midwest's metropolitan areas, where parking spaces out-number library periodicals, UMD is a community where close to a third of the undergraduate population resides in the many on-campus housing options or in the historic neighborhoods surrounding the campus.

Comprising some 50 buildings (all constructed since 1948) and set on 244 acres of residential land with scenic views of Lake Superior, the UMD campus is a city unto itself, with housing, dining facilities, a theater, a planetarium, research laboratories, athletic venues, parks, wilderness areas, radio and television studios, a newspaper, the latest computer technology, medical facilities, shopping, entertainment, and a state-of-the-art library which merges the print and digital worlds, providing students with the region's most

Continued on page 11





# FEED YOUR APPETITE

On-the-go?  
We've got you  
covered! It's easy.  
New SUBWAY®  
Restaurants Online  
ordering!

ORDER ONLINE AT  
[SUBWAY.COM](http://SUBWAY.COM)

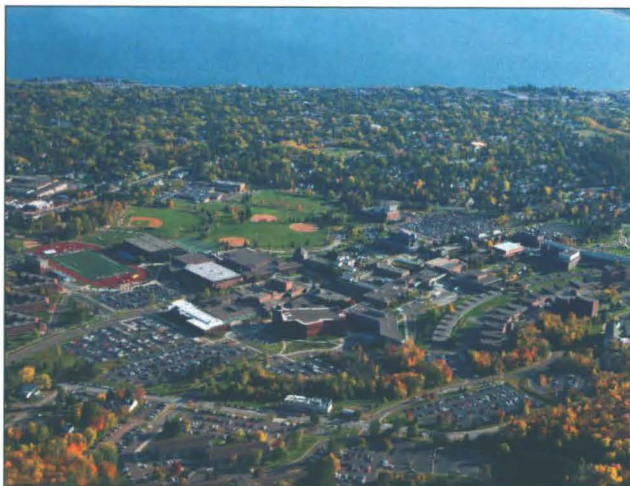


**SUBWAY**  
eat fresh.®



Please allow 15 minutes for order fulfillment. Customer registration required. Prices and participation may vary. May not be combined with other offers, coupons or discount cards. ©2015 Doctor's Associates Inc. SUBWAY® is a registered trademark of Doctor's Associates Inc.





advanced gateway to information. Dedicated in August 2000, the UMD Library was a \$26-million project that provides the campus with nearly 168,000 square feet of new space and room for more than 200 laptop and desktop computers. Since the turn of the 21st century, UMD has added over \$200 million worth of new projects (including the Library), some of the latest being the Sports and Health Center Addition (\$13 million, opened 2006), the Life Science Renovation (\$15 million, opened 2006) the Labovitz School of Business and Economics (\$23 million, opened 2008), the Bagley Environmental Classroom (\$1 million, opened 2009), the Swenson Civil Engineering Building (\$15 million, opened 2010) and the

Lawrence A. Ianni Hall (\$14 million, opened 2011.)

In a community like Duluth-Superior, with its metro population of over 125,000 and its amazingly diverse economy, opportunities for internships, employment, and on-the-job education abound, giving countless UMD graduates a much-desired chance to make their permanent home and start their careers in the area.

Here, where the ability to transport goods over water created an economy and several communities, transportation is in abundant supply.

A major hub for the region, the Twin Ports is connected by numerous four-lane interstate freeways and major

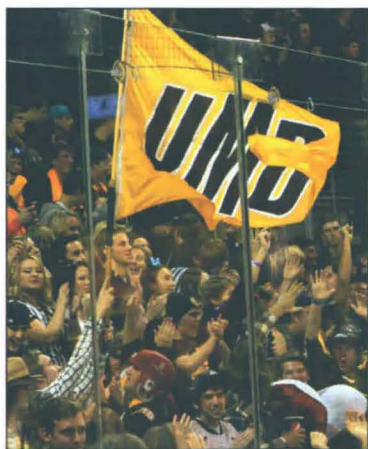
U.S. highways. Minneapolis-St. Paul is less than a three-hour drive away, and destinations like Madison, Milwaukee, and Chicago can be reached by car in less than half a day. And, the Duluth International Airport is served by several national/regional airlines, with daily nonstop flights to Minneapolis-St. Paul and Chicago

## MEET THE FUTURE

Centuries have passed since the first native peoples made their primitive homes near that place where the river meets the lake, and it's been generations since the first foreign sea captain sailed his ship as far inland as it would go, but modern-day Duluth is still a buzzing meeting place.

More than ever, young families are finding good jobs, safe streets, and a great place to raise children. And each year, thousands of students come to Duluth to gain the skills to compete in a global marketplace, learning the latest in technology and life skills at the world-class university on top of the hill.

Duluth has changed dramatically over the past 150-plus years, from a small, rural town, to an industrial shipping hub, to a crossroads of commerce, information, and education. But one overwhelming and constant trend remains — meeting. Just as ships meet their cargo and big city opportunity meets small town charm, young adults by the thousands come to study and meet their future where the woods meet the water. ■



**UMD ATHLETICS COUPON  
2015-16 SEASON**



**20% off**  
**One UMD Wear or  
UMD Imprinted Gift**

Limit one coupon per item per purchase. Coupon not valid on sale items, prior purchases, other discounts or offers. Expires 4/30/16.

Coupon valid at campus store or on game day at Amsoil Arena, Malosky Stadium or Romano Gym.



**umdstores.com**  

1120 Kirby Drive - Duluth, MN 55812 - (218) 726-8520

**VISIT OUR CAMPUS STORE • OPEN WEEKENDS!**



**Legendary Indulgence**  
Canal Park  
218-727-4192,  
Miller Hill  
218-722-9313



**LITTLE ANGIES  
CANTINA  
AND GRILL**

**Southwestern and  
American favorites!**  
11 E. Buchanan 218-727-6117

SINCE  
**ENJOY  
THE  
GREAT  
TASTES  
OF  
CANAL  
PARK!**  
1975



**Duluth's  
Best  
Sports Bar**  
425 Lake Ave. S.  
218-722-4724

**The New  
SPORTS  
GARDEN  
BAR & GRILL**



**Bellisio's**  
ITALIAN RESTAURANT  
WINE BAR

**Classic Italian dining**  
Wine Spectator Award winner since 1999  
405 Lake Ave. S, 218-727-4921

 [grandmasrestaurants.com](http://grandmasrestaurants.com)





# ATHLETIC DIRECTOR JOSH BERLO

The person in charge the University of Minnesota Duluth's 16-sport program is Josh Berlo, who officially assumed UMD's Director of Intercollegiate Athletics position on April 3, 2013 after spending the previous 12 years at the University of Notre Dame. In addition to supervising all Bulldog head coaches, staff and administrative personnel, Berlo is responsible for the student-athlete experience, developing and implementing a strategic plan, managing a departmental budget, directing the use of UMD athletic facilities, and leading fundraising and marketing efforts. These objectives are all geared to the Bulldog mission of excellence in the classroom, in the community and in competition.

"UMD is a special place with an impressive tradition of multi-disciplinary excellence," says Berlo. "I am honored to lead Bulldog Athletics in support of our student-athletes as they chase championships, excel academically and support the community." Since his arrival at UMD, Berlo also made fan experience and engagement a top priority while helping expand the national profile of Bulldog Athletics.

"The Bulldogs have a tremendous level of support from the Northland," he adds. "As such, it is our duty to provide the ultimate fan experience, be role models and provide a source of community pride."

Berlo's brief tenure has seen continued and higher levels of success behind the scenes as well as on and off the playing surfaces. Among the numerous projects Berlo helped spearhead with his talented staff and coaches since his arrival at UMD include: expanded television coverage locally with Northland's News Center (KBJR and My9) and regionally on Fox Sports North; the signing on of Under Armour as the official apparel and uniform partner of the Bulldogs doubling the amount of product supplied to UMD athletics; the launch of the department's redesigned web site ([umdbulldogs.com](http://umdbulldogs.com)); enhanced marketing and social media presence highlighted by the receipt of seven National Association of Collegiate Marketing awards over the past two years; a complete Intercollegiate Athletics Departmental Reorganization resulting in a more efficient, effective and fiscally-responsible effort; and the addition of a \$400,000 LED boards at Malosky Stadium and Romano Gymnasium. In addition, Berlo and UMD Athletic Development Director Gary Holquist, partnered for a record year of fundraising in 2014-15 generating over \$1.3 million in annual gifts, endowment contributions, estate planning and capital project donations.

Academically, Berlo helped lead UMD athletics to it all time best academic performance in 2014-15 when over 400 student-athletes achieved an average GPA of 3.18 (which topped the school record 3.16 figure set one year earlier). UMD also produced seven NSIC Myles Brand All-Academic Award recipients (with GPAs over

3.75) and 102 different All-Academic Team honorees in the NSIC, NCHC and WCHA.

In competition, the Bulldogs continued to excel on a regional and national level with both a NSIC regular season and tournament NCAA championship and 12th straight NCAA playoff berth for volleyball and a seventh consecutive NCAA playoff appearance and NSIC title for football. The men's hockey Bulldogs also advanced to the NCAA II tournament for the fourth time in seven seasons and was ranked sixth in the final USCHO.com poll. (Football and volleyball held down the No. 2 and No. 3 spots, respectively, in their final AVCA II and NFCA II polls). The 2014-15 season also saw the Bulldog successfully its NCAA II Central Regional women's cross country title and finish fourth -- its best showing in program history -- two weeks later and the NCAA II Championships. During the course of last season, the Bulldogs were ranked as high as 6th in National Association of Collegiate Directors of Athletics (NACDA)/Learfield Sports Directors' Cup standings.

Concurrently, the Bulldogs provided the Twin Ports area again with over 2,000 hours of community service to dozens of organizations. Those include the Boys and Girls Club ("Champions Building Champions" Program), Churches United in Ministry (CHUM), Damiano Center Kid's Cafe, Arrowhead Juvenile Center, Second Harvest Food Bank, Minnesota Teen Challenge, the Salvation Army Basketball League, the ALS Association, Camp Cambria, Make-A-Wish Foundation, and Mentor Duluth.

When he can find some time away from Bulldog Athletics, Berlo can be found hiking on the Superior Hiking Trail or skiing at Spirit Mountain. He volunteers with the North Country Trail Association; and the Superior Hiking Trail Association, serves on the Duluth Chamber of Commerce Board and is an Advisory Committee Member for the Northern Lights Foundation.

Prior to joining the Bulldog staff, the 37-year old Berlo (11/24/77) was employed as Notre Dame's senior assistant athletics director for guest relations and event marketing. In this role, he oversaw all aspects of athletic ticketing, event marketing and promotional efforts, football game-day parking operations, the Drive with the Irish sponsorship program, was the sport administrator for the Notre Dame Baseball program which included leading the 2010 coaching search, and he represented Notre Dame on the Executive Committee of the Sports Management Institute (SMI), a program which he has been involved with since his undergraduate days and completed in 2008. SMI is a seven-month graduate level business program which includes 10 total days (a seven-day summer session and three-day winter session) in a residence program for college athletic administrators. Berlo currently is an Athletic Director Representative on the SMI Executive Committee.



A native of Warren, R.I., Berlo spent three years as assistant athletic director, after doing a two-year stint as Director of Ticket Operations for the Notre Dame ticket office. He was the recipient of the 2008 Student Government Irish Clover Award for outstanding service to the students of the Notre Dame community. In 2012 Berlo helped a group of football student-athletes establish the Notre Dame Chapter of Uplifting Athletes and served as their adviser. Uplifting Athletes is a national nonprofit organization aligning college football with rare diseases and raises them as a national priority through outreach, research, education, and advocacy. Berlo has also served as an editor for undergraduate Sport Administration textbooks and was an annual guest lecturer in the Mendoza College of Business.

Berlo came to Notre Dame in 2000 as an athletic department intern, then a graduate assistant, before being accepted into the nationally-renowned Mendoza College of Business in 2001 in pursuit of a master's degree in business administration. He was granted the NBC MBA Fellowship and also won the Arthur W. Page Society Grand Prize for its corporate communications case-writing contest. In 1994, Berlo received his MBA from Notre Dame with a concentration in finance and communications.

As an undergraduate student, Berlo attended the University of Massachusetts at Amherst. During his time there, he worked in the Athletic Department and assisted with event management, ticketing and game operations. In addition, he conducted research and performed special projects for the UMass Faculty Athletic Representative, including preparations for Major League Baseball arbitration cases. Berlo earned his bachelor's degree in sport management from UMass with a minor in economics in 1999.

A 1996 graduate of the Moses Brown School in Providence, R.I., Berlo earned the Rhode Island Golf Association's John P. Burke Memorial Scholarship. He and his wife, Meg, and their 2006 Iftarod finisher Alaskan Husky, Skip, make their home in Duluth near the UMD campus.



# National Champions in Crust Crimping

A tradition since 1954



FAMILY • FRIENDS • TRADITIONS

Cloquet 879-3705 • Downtown Duluth 727-8551  
 Duluth Heights 727-8222 • Hermantown 729-7227 • Lakeside 525-6604  
 West Duluth 628-2327 • Woodland 724-1277  
[www.mysammys.com](http://www.mysammys.com)

## Northern Communities Credit Union

For the big steps in your life,  
 We're there to help you *succeed*.

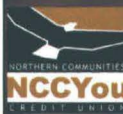
Convenient online banking, low rate loans, a variety of mortgage products, cutting edge identity monitoring, mobile deposits, and dedicated staff to help you choose the right services for your path.

Visit us on the web or in person to get started.



3311 West Arrowhead Rd., Duluth  
 800 S. 16<sup>th</sup> Ave., Virginia, MN  
 (218) 279-3200  
[www.nccyou.com](http://www.nccyou.com)  
 Federally Insured by NCUA

**NCCYou is proud to  
 support UMD Athletics**



# BEST BBO



**WINNER OF OVER  
500 BBQ AWARDS**



Let Dave's make your next event smokin'. We make it easy: Pick-up, drop-off and full-service catering available.

**DINE-IN • TO GO  
CATERING**



[famousdaves.com](http://famousdaves.com)

355 Lake Ave. South  
Duluth, MN 55802

For catering call 218-740-3180



**Proud Supporter of  
UMD Athletics**

**DIFFERENT. DELICIOUS. DULUTH**



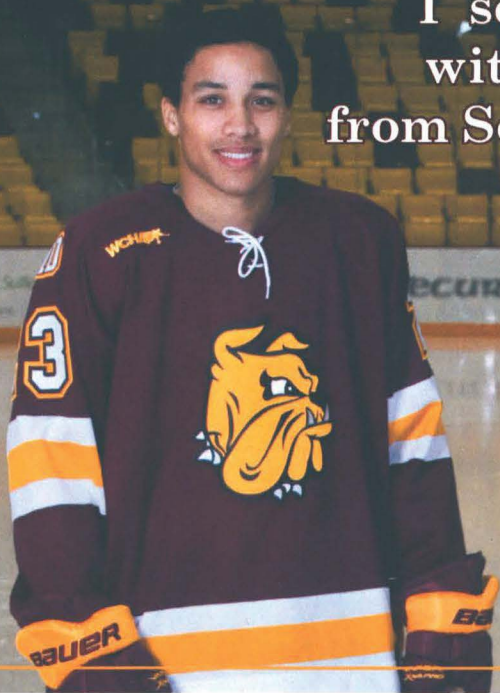
# **TAVERN** **ON THE HILL**

[www.tavernduluth.com](http://www.tavernduluth.com)

1102 Woodland Ave. Duluth, MN 55812

#218.724.0010

I scored a hat-trick  
with a ring for Lexi  
from Security Jewelers



JT Brown

## **Security Jewelers**

*The Area's Leading Jeweler®*

307 West Superior Street • Downtown Duluth  
218-722-6633 or 800-251-2222 • [securityjewelers.com](http://securityjewelers.com)



# BULLDOG HEAD COACHES



**JIM BOOS**  
VOLLEYBALL



**MATT BOWEN**  
MEN'S BASKETBALL



**GREG CANE**  
SOCCER



**MAURA CROWELL**  
WOMEN'S HOCKEY



**PAUL NISIUS**  
MEN'S TRACK & FIELD  
AND CROSS COUNTRY



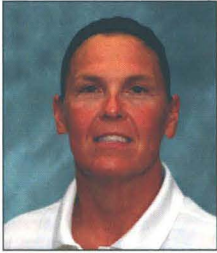
**MANDY PEARSON**  
WOMEN'S BASKETBALL



**BOB RIENTS**  
BASEBALL



**SCOTT SANDELIN**  
MEN'S HOCKEY



**JEN WALTER**  
SOFTBALL



**JOANNA WARMINGTON**  
WOMEN'S TRACK & FIELD AND  
CROSS COUNTRY



**CURT WIESE**  
FOOTBALL



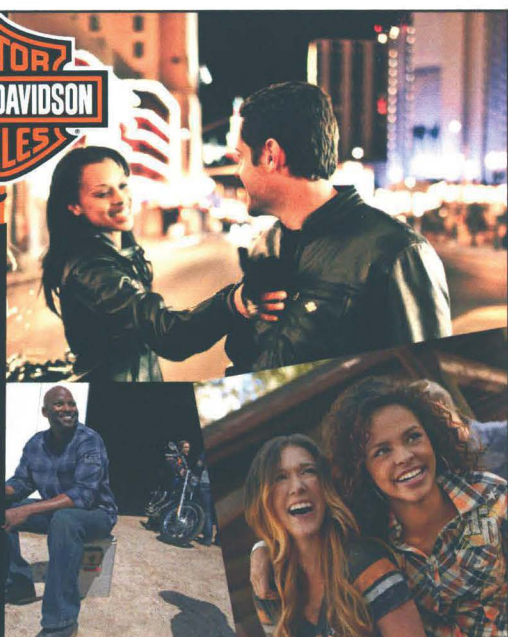
The 2014 NSIC Coach of the Year, Jim Boos shepherded his Bulldogs to a 20-0 NSIC mark and program-best winning percentage (.943 off a 33-2 record) last season.

**FEED YOUR  
WILD SIDE**



**HARLEY-DAVIDSON**  
*Sport Center*

**Come Check Out Our Apparel,  
Bikes, and Accessories!**

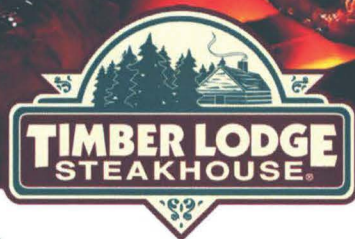


**Visit us online at [www.hdduluth.com](http://www.hdduluth.com)!**

**Authorized Full-Line Dealer | Hwy 53 & Stebner Rd | 218-729-9600 | 1-888-729-9600**



**MINNESOTA'S  
LEGENDARY  
STEAKHOUSE**



**(218) 722-2624**  
325 Lake Ave S  
Duluth, MN 55802

[duluth@timberlodgesteakhouse.com](mailto:duluth@timberlodgesteakhouse.com)  
[www.timberlodgesteakhouse.com](http://www.timberlodgesteakhouse.com)  
Accepting reservations up to 100 people





# THIS IS BULLDOG COUNTRY

Now in its 85th year of operation, the University of Minnesota Duluth Department of Intercollegiate Athletics continues to maintain one of the most competitive and well-balanced sports programs of its size in the country.

Fourteen of UMD's 16 teams—baseball, men's and women's basketball, men's and women's cross country, football, women's soccer, softball, women's tennis, men's and women's indoor and outdoor track and field, and volleyball—are members of the 16-member NCAA Division II Northern Sun Intercollegiate Conference. The NCAA Division I men's and women's hockey programs, meanwhile, are aligned with the eight-team National Collegiate Hockey Conference (which debuted in 2013-14) and the eight-school Western Collegiate Hockey Association, respectively.

The 2014-15 athletic season started out with a 3-0 season opening volleyball triumph over Northern Michigan University on Sept. 4 and wrapped up with an All-American outdoor track performance by freshman Emilee Trost on Memorial Day weekend. In between, the Bulldogs experienced a multitude of highlights—including several program firsts. Those included:

- \* UMD produced 18 All-Americans, including one NSIC Player of the Year in junior volleyball setter Ashley Hinsch. Trost hit the All-American trifecta—cross country, indoor track (fourth in the mile run) and outdoor track (fourth in the 1,500-meter run)—during her debut Bulldog go-around while senior offensive guard Andrew Muer became the first Bulldog to be named to seven different All-American football teams in the same season.

- \* Under the direction of second-year head coach Curt Wiese, the football Bulldogs rolled to the program's fifth undefeated regular season, going 11-0, and along the way captured a share of their 19th NSIC title—a league record. UMD, which closed out the year with a 13-1 overall record (the third most triumphs in team history) and checked in at No. 3 in the final American Football Coaches Association II poll, also secured their seventh consecutive NCAA II playoff berth and advanced to the quarterfinal round.



- \* UMD assembled another historic volleyball season in 2014, finishing 33-2 overall for a .943 winning percentage—the best ever posted by a Bulldog club. UMD was defeated just once during the regular season—to No. 1 ranked (and eventual NCAA II champion) University of Tampa—went a perfect 20-0 against NSIC competition, and reigned as the league playoffs titleholders for a second straight year. The Bulldogs went on to host their second straight NCAA II Central Region Tournament as the No. 1 seed and were upended in the championship match by a streaking Southwest Minnesota State club. Still, UMD boasted a program-high six players who received All-America honors and held down the No. 3 spot in the final American Volleyball Coaches Association Division II poll.

- \* The women's cross country team was rated among the top five NCAA II schools nationally from the outset of the 2014 season and the Bulldogs lived up to that billing by placing third—their highest finish ever—at the NCAA II championships in Louisville, Ky. That came two weeks after the Bulldogs captured their second NCAA II Central Region championship in as many years with sophomore All-American Samantha Rivard leading the way. Rivard outran 189 other runners at that event en route to becoming just the third Bulldog ever to lay claim to a NCAA II regional title.

- \* Senior soccer forward Maureen Stormont became UMD's all-time scoring (126 points) and goals (54) leader, snapping the previous mark that had stood for 14 years.

- \* Men's hockey eclipsed the 20-win plateau for the fifth time in the past seven years and advanced to the quarterfinal round of the NCAA Tournament before being ousted by national runner-up Boston University. (The Bulldogs have now made four of the last seven NCAA Tournaments—their

most appearances in that period of time in program history). UMD, whose strength of schedule during the regular season ranked first in the country for the second straight winter, checked in at No. 6 in the final USCHO.com poll.

- \* After going without a single home baseball game the previous two seasons due to uncooperative weather, UMD served up nine doubleheaders at Bulldog Park and Wade Stadium

and proceeded to compile a 35-16 overall record. Those 35 wins were one shy of the team's single-season record.

- \* Outfielder Hannah Schmolli and shortstop Becky Smith were are among the Top 10 finalists for the inaugural National Fastpitch Coaches Association Division II National Freshman of the Year award. UMD was the only school to produce two finalists and Schmolli and Smith were the lone representatives from NSIC.

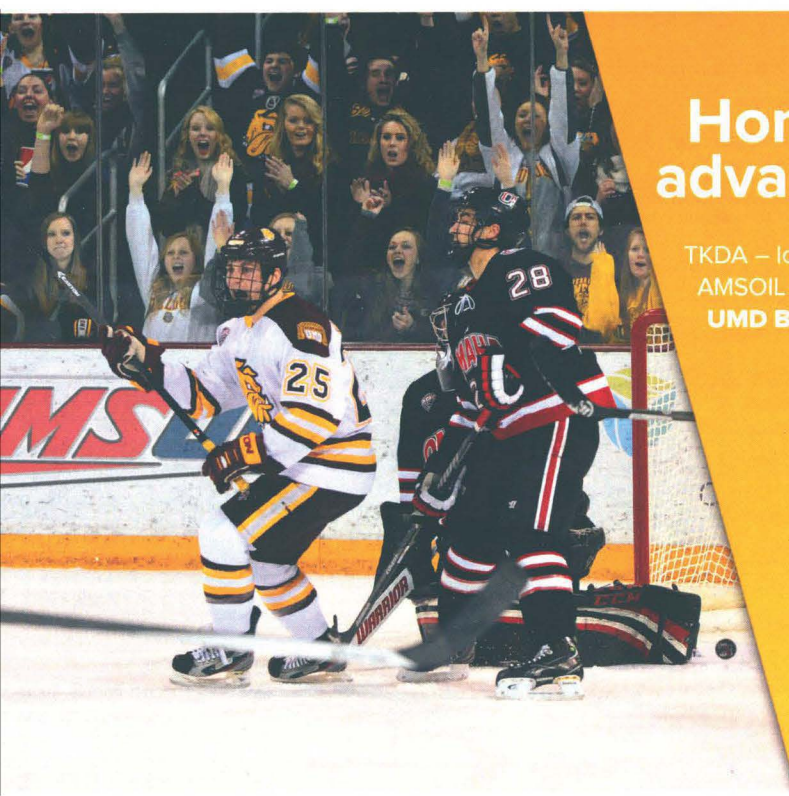
- \* UMD's average men's hockey home attendance of 6,411 this winter was a program record and the fifth highest figure turned in by any of the nation's 59 NCAA Division I hockey-playing schools. The Bulldogs also set a single-game attendance mark on Nov. 15 when 7,424 spectators packed AMSOIL Arena to see the Bulldogs take down Minnesota 2-1.

- \* UMD athletic sponsorships topped the \$1 million mark (cash and in kind) for the first time ever. The Bulldogs have approximately 125 sponsorship partners.

- \* @umbulldogs now has nearly 9,000 Twitter followers—the second-most of any NCAA II athletic department in the nation. ■

## NCAA II NATIONAL CHAMPIONS

- Samantha Rivard (Indoor Track & Field)
  - Mile Run · 2014
- Lexi Williams (Outdoor Track & Field)
  - 800-Meter Run · 2012
- Dan Soldner (Outdoor Track & Field)
  - Shot Put · 2004
- Kerrick Johnson (Outdoor Track & Field)
  - Discus · 1993
- Kerrick Johnson (Indoor Track & Field)
  - Shot Put · 1992
- Jodi Swenson (Indoor Track & Field)
  - High Jump · 1991
- Mike Hirschung (Wrestling-NAIA)
  - 158 Pounds · 1987



# Home ice advantage!

TKDA – local architect of  
AMSOIL Arena, home of  
UMD Bulldog Hockey



**TKDA**

Architecture  
Engineering  
Planning



# OFFICIAL BULLDOG TAILGATE PARTIES 5-7 EVERY HOME GAME



TEAM SPIRIT  
**FACE  
PAINTING  
& MORE!**

**BIG  
SCREEN  
TV GAMES**



**HOME  
TICKET  
GIVEAWAYS  
& PRIZES!**



CANAL PARK 218-722-4724  
thesportsgarden.com

# STEAKS DONE RIGHT

OPEN DAILY  
FOR LUNCH  
@11AM



**OUTBACK**  
STEAKHOUSE®

HERMANTOWN OUTBACK STEAKHOUSE  
4255 Haines Rd, Hermantown, MN 55811  
(218) 722-2471

**CLICK THRU**  
SEATING



**GET SEATED FASTER TONIGHT!**  
[OUTBACK.COM/SEATING](http://OUTBACK.COM/SEATING)

**PROUD SUPPORTER OF  
UMD ATHLETICS**



Burgers, Pasta,  
Flatbreads and Potpie.

*... And that's just one table.*

Black Woods on the Lake 2525 London Road Duluth  
218.724.1612 • [www.blackwoods.com](http://www.blackwoods.com)

**NAMED BEST MARTINI LOUNGE  
IN MINNESOTA**



*BW*  
**BLACK I WATER**

*At Greysolan*

DOWNTOWN DULUTH • 218.740.0436 • NEXT TO THE SHERATON HOTEL



# WHERE THEY PLAY THE GAME

AMSOIL Arena became the new home of Bulldog hockey at the midway point of the 2010-11 season.



The University of Minnesota Duluth is fortunate to offer some of the top—and at least one of the newest—facilities in the Upper Midwest for use by its student-athletes.

Topping that list is the dazzling \$80-million, 6,756-seat AMSOIL Arena, which the Bulldog men's and women's hockey teams christened in December 2010. It's located on the St. Louis Bay waterfront near Duluth's famous Aerial lift bridge and Canal Park—and a stone's throw from the Bulldogs' previous hockey home, the Duluth Entertainment and Convention Center (DECC).

While the DECC was known as a great place to watch a game, the level of fan comfort is taken to new heights inside AMSOIL Arena. From simple things like seat width and leg room to necessities like additional restroom facilities, fan comfort and convenience are the hallmarks of the Bulldogs' new digs. Designers took cues from other successful and popular sports facilities and incorporated fan-friendly touches like an open concourse around much of the lower seating bowl, meaning that a trip to one of the numerous concession stands will not mean missing any of the on-ice action. And, if they do, there is

a \$1 million, 8' x 14' matrix scoreboard hung above center ice, which provides in-game replays, videos, and graphics in 10-millimeter LED display.

AMSOIL Arena is also equipped with something the DECC never had—private suites, some 15 in all. In addition, the Champions Lodge, located on the main level adjacent to one of the college hockey's finest and most spacious press boxes, serves as a gathering space for UMD athletic donors, alumni and supporters. At the other end of the hallway is the Hall of Fame Suite, which

Continued on page 25

At first glance, AMSOIL Arena brings to mind a striking contrast with other top-notch National Collegiate Hockey Conference/Western Collegiate Hockey Association rinks and some familiar similarities to the old DECC. Set foot inside rinks like Ralph Engelstad Arena (the University of North Dakota) or the Kohl Center (the University of Wisconsin) and one is immediately struck by their sheer vast size. By contrast, a step onto the ice surface at AMSOIL Arena causes many to notice that despite having more than 1,600 additional seats, it's as intimate as the "old" DECC, with the lower bowl of seats hugging the ice surface and the upper level seats hanging seemingly right over the ice. Truly, there's not a bad seat in the house.



Romano Gymnasium provides the basketball and volleyball Bulldogs with a tremendous home-court advantage.

# See You Before or After the Game!

Duluth Superior Cloquet

**Perkins**<sup>®</sup>  
RESTAURANT  
& BAKERY

*Supporting UMD Athletics since 1963*

## OPEN LATE

Full Service Restaurant and Bakery

West/East Duluth, Miller Hill Mall, and Superior

INDOOR

# ADVENTURE ZONE

FAMILY FUN  
CENTER

329 Lake Avenue South  
Canal Park 218-740-4000  
azduluth.com



OFFICIAL  
BEST OF

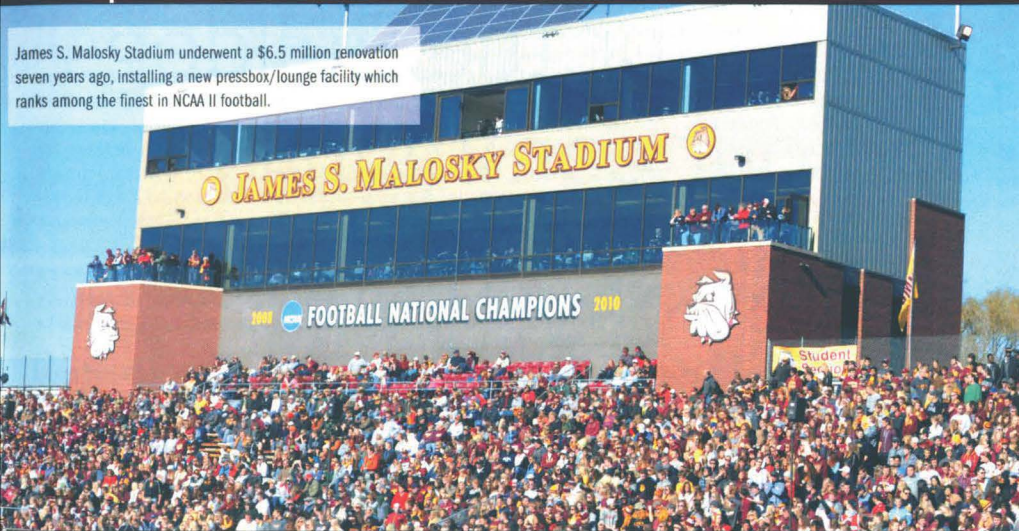
Games & Prizes - Hottest Arcade Games  
Giant Kids Inflatables  
Virtual Sports Challenge  
Parties for all occasions!





# WHERE THEY PLAY THE GAME

James S. Malosky Stadium underwent a \$6.5 million renovation seven years ago, installing a new pressbox/lounge facility which ranks among the finest in NCAA II football.



holds up to 34 people and contains plaques of the 37 Bulldog hockey alumni and coaches who are members of the UMD Athletic Hall of Fame.

On the lower level, out of sight for most visitors, but on full display for current and potential future Bulldogs, are some of the real "goodies." Those include a state-of-the-art weight room and athletic training center, player's lounges, two large hydrotherapy pools (one of which features a treadmill in its base) and other amenities that rival any other school in the nation.

James S. Malosky Stadium, northern Minnesota's premier outdoor athletic venue, has been the home of Bulldog football for the last 50 seasons. In 1999, the on-campus facility, named after the legendary Bulldog football coach Jim Malosky, received a \$1.6-million facelift with the installation of a new football playing surface (which was then replaced 11 years ago) along with an eight-lane, all-weather track. During the summer of 2008, a four-level, \$6.5-million structure, which included concession and washroom areas, a spacious club room, and a press box, was erected behind the main grandstand. In 2009, a new \$325,000 scoreboard, 48' x 33' in size, was added to the north end zone and now contains a 22' x 22' LED videoscreen. In addition to housing the football, women's soccer, track and field and (at times) the softball Bulldogs, Malosky

Stadium, with a seating capacity of 4,500, also hosts a variety of university intramural activities.

Romano Gymnasium has hosted UMD men's basketball for well over a half-century (it opened in 1953) and women's basketball and volleyball since the early 1970s. The 2,759-seat facility, which has undergone a number of substantial renovations over the past two-plus decades, was renamed in honor of the late UMD athletic director Ralph Romano in 1987.

The UMD baseball team plays its home games at Bulldog Park. Constructed in 1988, Bulldog Park's natural grass playing surface is generally considered to be the finest in the area, while Junction Avenue Field is the UMD softball team's home diamond. Lighted for night play and situated on the western edge of campus, Junction Avenue Field debuted in 1987.

UMD also utilizes the Ward Wells Field House, which contains an indoor running track and tennis, volleyball, and basketball courts.



This \$325,000 videoboard was added to Malosky Stadium just prior to the 2013 season.

# Caring for the Bulldogs and our community

Proud to be the official Sports Medicine team for:



Caring for athletes is part of our bigger commitment to the community. Essentia Health donates more than \$600,000 in expert sports medicine services to area colleges, high schools, athletic events, and the performing arts every year. So when aches and pains start affecting your quality of life, trust the region's largest sports medicine program featuring highly specialized fellowship-trained physicians. We can help get you back in the game.

**Orthopedics and Sports Medicine**

Call 218.786.3520 or 800.873.1077

[EssentiaHealth.org](http://EssentiaHealth.org)



**Essentia Health**  
Here with you





# MAKING THE GRADE

As much as the University of Minnesota Duluth has accomplished on the field of play since the inception of intercollegiate athletics on campus over eight decades ago, it has also maintained an equally strong and proud tradition of academically preparing its student-athletes. And, it has the numbers to prove it.

Case in point: Since 1987-88, nearly 94 percent of those student-athletes who participated in a varsity sport for at least four years have graduated.

In 2014-15, 80 different Bulldogs qualified for a spot on the NSIC All-Academic Team and while 22 others secured either National Collegiate Hockey Conference (14 men) or Western Collegiate Hockey Association (eight women) All-Academic Team status. In addition, UMD's 412 student-athletes, which includes redshirted freshmen, posted an average GPA of 3.18 -- an all-time high (bettering the previous mark of 3.16 set one year earlier) -- in 2014-15 and of that group, 99 achieved GPAs of 3.50 or better and 11 turned in perfect 4.00 figures. The women's basketball Bulldogs registered the best collective GPA (3.62) of any UMD team during the 2014-15 school year while soccer (3.33) and tennis (3.32) were next.

On the individual front, senior track and field star Amelia Maher received 2014-15 Capital One/CoSIDA Academic All-American recognition

(second team), the 20th Bulldog to ever be so honored. Maher was also among seven UMD seniors who were bestowed with a NSIC Myles Brand All-Academic With Distinction Award (for maintaining a 3.75 GPA as a collegian), joining Courtney Driscoll (soccer), Aaron Handorff (men's track and field), Alyssa Kerkhoff (women's basketball), Katie Schneider (soccer), Maureen Stormont (soccer) and Ana Zdechlik (soccer). Maher and hockey forward Adam Krause both closed out their respective UMD careers by landing the 2014-15 E.L. "Duce" Rasmussen Award (UMD's top senior male and female scholar-athletes). Senior forward Zoe Hickle was a Top 5 finalist for the prestigious Hockey Humanitarian Award (a first for UMD athletics) while Krause was a nominee for that honor as well as the Lowe's Senior CLASS Award. A trio of Bulldog seniors -- Jacob Brusehaver, Gavin Gray and Ryan Miesbauer -- were cited as as 2014-15 National Football Foundation's National Honor Society selections in recognition of their exemplary academic achievements. USTFCCCA All-Academic Cross Country acclaim was awarded to six runners (Breanna Colbenson, McKenzie Holt, Hannah Olson, Alexandra Rudin, Amber Seidenkrenz and Emilee Trost) while Colbenson, Maher, Rudin Trost, Jennifer Hitchcock and Madeline Schaeffer nailed down USTFCCCA

All-Academic Track and Field distinction. The UMD men and women both qualified as a USTFCCCA All-Academic Team in cross country for compiling a 3.00 cumulative GPA or better and the Bulldog women duplicated that feat in track.

## ACADEMIC ALL-AMERICANS

- Becky Anderson (Soccer)  
2010-11 (First Team)
- Nate Beerling (Cross Country/Track)  
2004-05 (First Team)
- 2003-04 (Second Team)
- Lindsey Dietz (Women's Basketball)  
2005-06 (First Team)#  
2004-05 (First Team)
- 2003-04 (Second Team)
- Allison Fanta (Volleyball)  
2011-12 (Second Team)
- Cameron Harper (Football)  
2012-13 (Second Team)
- Heather Hamilton (Cross Country/Track)  
2004-05 (First Team)
- 2003-04 (First Team)
- 2002-03 (Third Team)
- Bridget Hines (Cross Country/Track)  
2010-11 (Third Team)
- Katie Huntley (Cross Country/Track)  
1999 (Third Team)
- 2000 (Second Team)
- Maria Leider (Soccer)  
2010-11 (Third Team)
- Tobias Lemke (Football)  
2009-10 (First Team)
- Amelia Maher (Cross Country/Track)  
2014-15 (First Team)
- David Nadeau (Football)  
2011-12 (Second Team)
- Isaac Odim (Football)  
2010-11 (First Team) #  
2009-10 (First Team)
- Caroline Oullette (Women's Hockey/At-Large)  
2004-05 (Third Team)
- Andrew Pattock (Football)  
2013-14 (First Team)
- Riitta Schaublin (Women's Hockey/At-Large)  
2006-07 (Third Team)
- 2005-06 (Second Team)
- Kyle Schmidt (Men's Hockey/At-Large)  
2010-11 (Third Team)
- Jeff Scissons (Men's Hockey/At-Large)  
1999-2000 (First Team)
- Dan Shroyer (Men's Track/At-Large)  
1999-2000 (Third Team)
- Brandon Wood (Football)  
2009-10 (Second Team)

# Academic All-American of the Year

## AT THE HEAD OF THEIR CLASS

A group of 16 Bulldog student-athletes have been named to the University of Minnesota Duluth Athletic Scholar List for compiling the highest grade point average during the 2014-15 school year in their respective sports:

NAME	SPORT	YR.	MAJOR(S)	GPA	HOMETOWN
Nathan Jack	Baseball	So.	Accounting/Finance	4.00	Neenah, Wis.
Jacob Brusehaver	Football	Sr.	Exercise Science	4.00	Hutchinson, Minn.
Ted Heikkila**	Cross-Country (M)	Sr.	Chemical Engineering	4.00	Delano, Minn.
Breanna Colbenson	Cross-Country (W)	So.	Phys Ed/Public Health & Promotion	3.98	Elmwood, Wis.
Kyle Schalow	Basketball (M)	Fr.	Business	3.93	Sherwood, Wis.
Alyssa Kerkhoff*	Basketball (W)	Sr.	Public Health & Promotion	4.00	St. Peter, Minn.
Anna Monke	Basketball (W)	Fr.	Psychology/Teaching Social Studies	4.00	Fergus Falls, Minn.
Dan Molenaar*	Hockey (M)	So.	Finance	3.95	Eden Prairie, Minn.
Catherine Daoust	Hockey (W)	Fr.	Mechanical Engineering	4.00	Ile Bizard, Quebec
Courtney Driscoll	Soccer	Sr.	Criminology/Spanish/Psychology	4.00	Apple Valley, Minn.
Marissa Ganske	Soccer	So.	Exercise Science	4.00	Egan, Minn.
Mel Jarvi*	Softball	So.	Biochemistry/Molecular Biology	4.00	Duluth, Minn.
Kaitlin Wohnoutka*	Tennis	So.	Biology	3.91	Luverne, Minn.
Grant Pulver	Track & Field (M)	Fr.	Economics/Statistics & Actuarial Science	4.00	Chippewa Falls, Wis.
Anna Jensen	Track & Field (W)	Fr.	Economics	3.97	Saginaw, Minn.
Sheenagh Caroline*	Volleyball	Sr.	Human Resource Management	3.89	Moose Lake, Minn.



Low Prices. Better Choices.



1

**SuperOne**  
**FOODS**

Right in your neighborhood



**Visit us at: [www.superonefoods.com](http://www.superonefoods.com)**

***Open Daily from 6am to Midnight***

**27 Store Locations**

**Across 4 States: ND, MN, WI, MI**



**JJASTOR**

Restaurant | Lounge | View

*Duluth's Only Revolving Restaurant*

**EAT  
DRINK  
LOUNGE**



**Where Bulldogs Gather**

Show game ticket get  
1/2 off app on game day

Radisson Hotel Duluth Harborview  
505 W Superior St, Duluth, MN 55802  
(218) 722-8439

[www.jjastorsrestaurant.com](http://www.jjastorsrestaurant.com)  
[marcy.wojick@radisson.com](mailto:marcy.wojick@radisson.com)



# SEDATION DENTISTRY

**Are you afraid of the dentist?**

Do you experience anxiety, fear, bad gag reflex, or have difficulty getting numb? Get all of your dentistry needs done here in one painless appointment with Conscious Sedation.

**218-724-8227**

22 E Calvary Rd Duluth

[www.floss-dental.com](http://www.floss-dental.com)

*Woodland family*  
dental

BEAUTIFUL STRAIGHTER WHITER TEETH

**Proud Supporter of UMD Athletics**



# Success is a team effort



Put a Wells Fargo banker on your team. We're here to help you succeed financially. Call, click, or stop by and have a conversation with a banker soon.

**Go Bulldogs!**

[wellsfargo.com](http://wellsfargo.com)

© 2015 Wells Fargo Bank, N.A. All rights reserved.  
Member FDIC. (1263586\_15555)

Together we'll go far





# GIVING BACK

Being a University of Minnesota Duluth student-athlete means more than just academics and sports. It's about learning some of life's simple lessons, such as it is always better to give than to receive.

Community service work has, for the most part, been a focal point of Bulldog athletics since its inception. UMD student-athletes, as well as coaches and staff, continuously seek opportunities to volunteer their time and reciprocate the support that Duluth and the surrounding communities has generously given Bulldog athletics for the past eight decades.

In recent years, the Bulldogs have been involved in countless charitable projects, including Adopt-A-Highway, Udac's Walk a Mile in My Shoes Walkathon, Adopt-A-Family (Salvation Army), Pucks Against Poverty, Make-A-Wish, City of Duluth Clean-Up Project, American Heart Association's Heart Walk, Toys for Tots, Buddy Walk, Dig for a Cure, Habitat for Humanity, Jump for Heart, Lion's Club Pancake Day, Adopt-A-School,

Kid's Fest, Mentor Duluth, Essentia Health's Breast Cancer Awareness, UMD's Stop Domestic Violence Campaign, Daffodil Days (American Cancer Society), Think Pink Night, the Grant Elementary School Reading Partners program, YMCA Kid's Day, Special Olympics, ALS Blizzard Tour and Locks of Love. UMD student-athletes have also volunteered at the Boys and Girls Club of Duluth with the "Champions Building Champions", Churches United in Ministry, the Damiano Center, Second Harvest Food Bank, Animal Allies, various elementary schools and youth sports clinics in addition to making numerous visits to local hospitals.

The UMD Athletic Department is committed to providing the Duluth, Northeastern Minnesota and Northwestern Wisconsin communities with the time, effort and enthusiasm of some 400-plus student-athletes, coaches, staff, and even Champ the Bulldog. If the Bulldogs can help your organization or school in any way, please contact the UMD Athletic Department at (218) 726-8168. ■

## SHJON PODEIN COMMUNITY SERVICE AWARD\* WINNERS

YEAR	RECIPIENT	SPORT
2014-15	Kelli Klun	Soccer
2013-14	Hannah Rutten	Women's Basketball
2012-13	Keegan Flaherty	Men's Hockey
2011-12	Cory Flesch	Football
2010-11	Jim Kunz	Football
2009-10	Kelly Duchene	Soccer
2008-09	Andrew Carroll	Men's Hockey
2007-08	Tawni Mattila	Women's Hockey
2006-07	Mark Knudsen	Football
2005-06	Laura Sylvester	Women's Basketball
2004-05	Dayna Groom	Softball
2003-04	Matt Williams	Men's Basketball
2002-03	Heather Hamilton	Women's Track

\*Awarded to a UMD student-athlete who best exemplifies leadership qualities on and off the field of play and has made noteworthy humanitarian contributions in the Duluth and University communities.



## DONATING 'DOGS

The following is just a sampling of the organizations that have received in-kind donations, namely tickets, from UMD Athletics for fundraising endeavors over the last few years:

ALS Foundation  
 Alzheimer's Association  
 American Cancer Society  
 American Red Cross/Northland Chapter  
 Animal Allies  
 Arrowhead Juvenile Center  
 Assumption School (Hibbing, Minn.)  
 Boys & Girls Club of the Northland  
 Carlton VFW  
 C.H.U.M. (Churches United in Ministry)  
 Circle of Hope-Duluth  
 Congdon Park Elementary School  
 Duluth Denfeld H.S. Band Boosters  
 Duluth Honor Guard  
 Duluth Lighthouse for the Blind  
 Duluth Power Squadron  
 Duluth School Patrol  
 Epilepsy Foundation  
 Essentia Health Foundation  
 Family of God Lutheran Church  
 First Witness Child Abuse Resource Center  
 Grand Rapids YMCA  
 Habitat for Humanity  
 Holy Cross Church

Holy Rosary School  
 Hope Lutheran Church  
 Homecroft Elementary School  
 Humane Society of Douglas County  
 Itasca County D.A.R.E. program  
 Kiwanis Club of Duluth and Cloquet  
 Lake Superior Life Care Center  
 Lakewood Elementary School  
 Leukemia Foundation  
 Laura MacArthur Elementary School  
 Lester Park Elementary School  
 Lincoln Park Middle School  
 Lutheran Social Services Crisis Nursery  
 March of Dimes  
 Men as Peacemakers  
 Minnehaha Elementary School (Two Harbors, Minn.)  
 Minnesota Army National Guard  
 Minnesota Teen Challenge  
 Myers-Wilkins Elementary School  
 Normanna & Rice Lake Volunteer Fire Departments  
 Northern Communities Land Trust  
 Northern Lights Foundation

North Shore Community School  
 Northwoods Children's Home  
 One Roof Community Housing  
 Piedmont Elementary School  
 PAVSA (Program to Aid Victims of Sexual Assault)Pike Lake Elementary School  
 Rotary Club of Duluth  
 Ronald McDonald House  
 St. Benedict's Catholic Church  
 St. James Catholic School  
 St. John's Catholic School  
 St. Michael's Elementary School  
 Stowe Elementary School  
 Superior Cathedral Church  
 Summit School  
 Twin Ports Action Coalition  
 United Northern Sportsmen  
 United Way of Greater Duluth and NE Minnesota  
 Voyageurs Area Boy Scouts  
 Young Athletes Foundation  
 YMCA of Duluth  
 YWCA of Duluth

# EXCITING.



2015 COROLLA

# BOLD.



2015 CAMRY

# INNOVATIVE.



2015 RAV4

**OFFICIAL VEHICLE OF UMD ATHLETICS**



Kolar Toyota  
Duluth, MN  
KolarToyota.com

Kari Toyota  
Superior, WI  
KariToyota.com

Iron Trail Toyota  
Virginia, MN  
IronTrailToyota.com

Ashland Toyota  
Ashland, WI  
Ashland-Toyota.com

**BUYATOTOYOTA.COM**

Some vehicles pre-owned.  
All models shown with options.



Let's  
Go  
Places

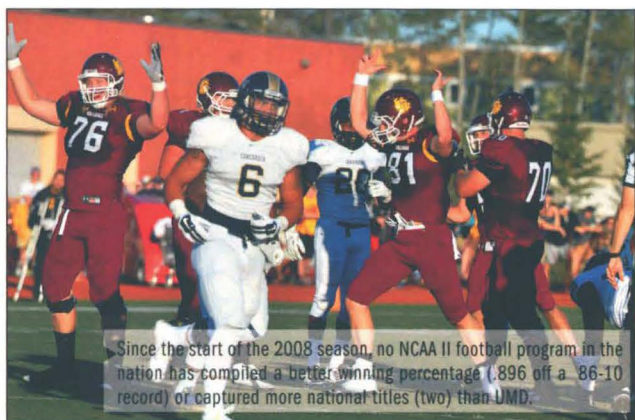


# PLAY LIKE A CHAMPION

The 2008-09 season was a noteworthy juncture in the annals of University of Minnesota Duluth athletics as it signaled the school's return to the Northern Sun Intercollegiate Conference for its NCAA Division II sports. When it last parted ways with the NSIC after 2003-04 (to join the now-defunct North Central Conference), UMD was enjoying a league run that was nothing short of dominating. Just how overpowering were the Bulldogs in their NSIC surroundings? For starters, since 1990 all 14 of UMD's NCAA Division II teams (men's and women's track and field have both indoor and outdoor seasons) had won at least three conference titles and, in UMD's final six years of league membership, took home at least one crown. No other NSIC school came close to matching that accomplishment. What's more, UMD staked a claim as the NSIC All-Sports champion for a whopping 13 consecutive years before packing its bags for the NCC.

During its brief, four-year stay in their new digs, the Bulldogs captured four NCC titles in volleyball and shared another crown in football (2005), while taking runner-up honors in men's cross country (2006 and 2004) and softball (2007).

Since re-enlisting with the NSIC, UMD



Since the start of the 2008 season, no NCAA II football program in the nation has compiled a better winning percentage (.896 off a 86-10 record) or captured more national titles (two) than UMD.

has certainly been the lead dog in football, going a sizzling 69-4 en route to winning six overall titles and seven consecutive North Division crowns. In addition, UMD has taken part in the NCAA II playoffs in each of the last seven seasons, including in 2008 and 2010 when it compiled perfect 15-0 records and captured a pair of NCAA II championships. The Bulldogs were also NSIC kingpins in volleyball in 2014, 2012 and 2011, women's cross country in 2013, women's indoor track in 2014, softball in 2013 and women's outdoor track in 2009.

But the recent successes have not been limited to just the NCAA Division II sports at UMD. Women's hockey, for instance, was added to the Bulldog athletic offerings in 1999 and has appeared prominently on the national radar screen ever since, winning five NCAA I Frozen Four titles (the first school to do so), including and unprecedented three straight crowns Division I from 2000-2003, and earning 10 of a possible 15 NCAA playoff berths. On the men's side, the Bulldogs, who skated off with their first national championship before a sellout crowd at St. Paul's Xcel Energy Center in 2011, have now qualified for NCAA tournament play four of the last seven winters. ■

## UMD CONFERENCE CHAMPIONS

### BASEBALL

NSIC (3): 1992, 1993, 1999

### MEN'S BASKETBALL

NSIC (16): 1933-34, 1934-35, 1935-36, 1936-37, 1981-82, 1982-83, 1983-84, 1985-86, 1986-87, 1987-88, 1988-89, 1989-90, 1990-91, 1991-92, 1996-97, 2001-02

MIAC (4): 1957-58, 1958-59, 1960-61, 1961-62

### WOMEN'S BASKETBALL

NSIC (11): 1984-85, 1988-89, 1989-90, 1990-91, 1992-93, 1994-95, 1995-96, 1997-98, 1998-99, 1999-2000, 2002-03

### MEN'S CROSS COUNTRY

NSIC (11): 1987, 1994, 1995, 1996, 1997, 1998, 1999, 2000, 2001, 2002, 2003

### WOMEN'S CROSS COUNTRY

NSIC (14): 1988, 1992, 1993, 1994, 1995, 1996, 1997, 1998, 1999, 2000, 2001, 2002, 2003, 2013

### FOOTBALL

NSIC (19): 1932, 1934, 1937, 1938, 1946, 1948, 1979, 1980, 1985, 1990, 1995, 1996, 2002, 2008, 2009, 2010, 2011, 2012

NCC (1): 2005

MIAC (3): 1960, 1961, 1973

### MEN'S HOCKEY

WCHA (3): 1983-84, 1984-85, 1992-93  
MIAC (8): 1952-53, 1953-54, 1955-56, 1956-57, 1957-58, 1958-59, 1959-60, 1960-61

### WOMEN'S HOCKEY

WCHA (3): 1999-2000, 2002-03, 2009-10

### WOMEN'S SOCCER

NSIC (5): 1997, 1998, 2001, 2002, 2003

### SOFTBALL

NSIC (14): 1984, 1987, 1988, 1989, 1991, 1992, 1995, 1996, 1997, 1998, 2000, 2001, 2003, 2013

### WOMEN'S TENNIS

NSIC (7): 1993, 1995, 1996, 1997, 2000, 2003, 2004

### MEN'S TRACK AND FIELD

NSIC-Indoor (10): 1993, 1994, 1995, 1996, 1997, 1998, 1999, 2002, 2003, 2004

NSIC-Outdoor (11): 1993, 1994, 1995, 1996, 1997, 1998, 1999, 2000, 2002, 2003, 2004

### WOMEN'S TRACK AND FIELD

NSIC-Indoor (14): 1990, 1991, 1994, 1995, 1996, 1997, 1998, 1999, 2000, 2001, 2002, 2003, 2004, 2014

NSIC-Outdoor (14): 1990, 1991, 1994, 1995, 1996, 1997, 1998, 1999, 2000, 2001, 2002, 2003, 2004, 2009

### VOLLEYBALL

NSIC (22): 1979, 1980, 1981, 1983, 1984, 1985, 1986, 1987, 1988, 1989, 1990, 1991, 1993, 1994, 1995, 1996, 1997, 1998, 1999, 2002, 2011, 2012, 2014

NCC (4): 2004, 2005, 2006, 2007



**SPORTS NEVER TASTED SO GOOD!**

*Duluth's Best  
Sports Bar  
In Historic  
Canal Park*

The **New**  
**SPORTS  
GARDEN**

BAR & GRILL

425 Lake Ave. S. 218-722-4724 [thesportsgarden.com](http://thesportsgarden.com)



**OtL**  
**ON THE LIMIT**

[www.otlduluth.com](http://www.otlduluth.com)  
2224 West Superior Street  
218.723.8266



SCREENPRINTING, EMBROIDERY & PROMOTIONAL PRODUCTS



UMD LICENSE #101

THE

**CHAMBER**  
BUSINESS DEVELOPMENT AREA

VISIT DULUTH 

 **DULUTH**  
AREA CHAMBER OF  
COMMERCE



# Caught You Looking

**COLD STONE**  
CREAMERY



1017 W Central Entrance  
Duluth, MN • (218) 722-2366

349 Canal Park Dr  
Duluth, MN • (218) 722-5086



16.4336 © 2015 Kahaia Franchising, L.L.C. COLD STONE CREAMERY and the MEDALLION design are registered trademarks of Kahaia Franchising, L.L.C.

## 2 FOR \$7

Create Your Own Ice Cream, Sorbet, Yogurt  
Served in a Plain Waffle

Served Plain Waffle. Extra mix-ins available for additional charge. Excludes tax. Limit one per customer per visit. Price excludes tax. Valid only at participating locations. Excludes Hawaii and Guam. No cash value. Not valid with other offers or fundraisers or if copied, sold, auctioned, exchanged for payment or prohibited by law. 16.4336 © 2015 Kahaia Franchising, L.L.C. COLD STONE CREAMERY is a registered trademark of Kahaia Franchising, L.L.C.

**COLD STONE**  
CREAMERY

1017 W. Central Entrance • Duluth MN • (218) 722-2366  
349 Canal Park Dr. • Duluth MN • (218) 722-5086

Expires 5/30/16 PLU # 37



# RAISE THE RUFF RUFF RUFF

In the stands or the office, we're proud to be  
UMD Athletics' marketing partner. *Go team!*

FLINT-GROUP.COM

 flintgroup



# Support the Team

➤ **WHATEVER THE SPORT!** ➤

Ask about our **UMD Parents Passport**  
Stay More... Save More!

**EDGEWATER**  
HOTEL & WATERPARK



Find your  
Tiki!

2400 London Road, Duluth MN

800.777.7925 • 218.728.3601  
[duluthwaterpark.com](http://duluthwaterpark.com)

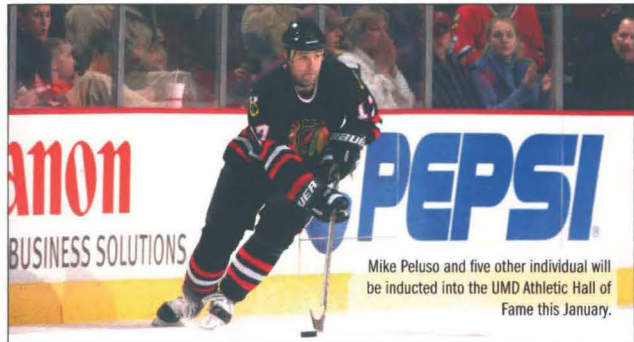


# UMD ATHLETIC HALL OF FAME



The University of Minnesota Duluth Athletic Hall of Fame was established in 1991 and enshrined its first class exactly 61 years—to the day—after the inaugural Bulldog varsity athletic event took place (a football game at Northland College on September 20, 1930). The UMD Athletic Hall of Fame now consists of 126 distinguished members representing some 21 sports.

These individuals, who have each played an integral part in the development and maintenance of the rich Bulldog athletic tradition, are honored with individual plaques in the UMD Sports and Health Center. UMD Athletic Hall of Fame inductees include:



## 2015

- **Dave Goldberg** (Longtime Supporter)
- **Kathy (Haakonson) Collman** (Volleyball, Softball; 1981-85)
- **Heather Hamilton** (Track; 2001-05)
- **Trevor Lundgren** (Wrestling; 1986-89)
- **Mike Peluso** (Hockey; 1994-98)
- **Tom Stoll** (Football; 1978-81)

## 2014

- **Gary Birkholz** (Football; 1979-82)
- **Matt Christensen** (Hockey; 1982-86)
- **Brett Hauer** (Hockey; 1989-93)
- **Kendall Kelly** (Basketball; 1982-86)
- **Trevor Lundgren** (Wrestling; 1986-89)
- **Pati Rolf** (Volleyball Coach; 1988-2001)

## 2013

- **Amory Bodin** (Football; 1976-80)
- **Guy "Goose" Gosselin** (Hockey; 1982-87)
- **Tom Maas** (Golf; 1959-63)
- **Jen (Warrick) Reierson** (Soccer; 1998-2001)
- **Maria Rooth** (Hockey; 1999-2003)
- **Chris Swiatkiewicz** (Baseball; 1996-99)

## 2012

- **Dick Fisher** (Football, Hockey, Track; 1961-65)
- **George Fisher** (Men's Basketball Coach, Men's Golf Coach; 1978-84)
- **Renee (Fluegge) Voltin** (Softball, Volleyball; 1984-88)
- **Jim Johnson** (Hockey; 1981-85)
- **David Thompson** (Basketball; 1984-88)

## 2011

- **Bruce Bennett** (Award-winning local sportswriter)
- **Bill Haller** (Softball Coach, Athletic Administrator; 1982-2012)
- **Scott Hanna** (Baseball Coach, Assistant Football Coach, Equipment Manager, Baseball, Football; 1968-2012)

- **Don "Doc" Roach** (Men's Tennis Coach, Athletic Trainer; 1970-98)
- **Karen Stromme** (Women's Basketball Coach, Women's Golf Coach, Athletic Administrator; 1983-present)

## 2010

- **Bob Davidson** (Baseball; 1972-73)
- **Bill Halbrehder** (Hockey; 1961-65)
- **Tom Milani** (Hockey; 1972-76)
- **Lynn Stottler** (Cross Country, Track; 1984-88)
- **Dave Viaene** (Football, Wrestling; 1985-87)

## 2009

- **Jeff Guidinger** (Basketball; 1983-87)
- **Ron Johnson** (Golf, Hockey; 1959-63)
- **Scott LeDoux** (Football; 1966-68)
- **Derek Plante** (Hockey, Baseball; 1989-93)
- **Ann (Patet) Henry** (Softball; 1986-89)
- **Corey Veech** (Football; 1982-86)



## 2008

- **Chris Marinucci** (Hockey; 1990-94)
- **Ron McClure** (Wrestling; 1990-94)
- **Chris Neumann** (Basketball; 1980-84)
- **Jodi (Swenson) Becker** (Track and ; 1989-92)
- **Darrel "Lefty" Warner** (Football; 1953-56)

## 2007

- **Scott Gernander** (Basketball, Football; 1965-69)
- **Linda Larson** (Athletic Administrator, Basketball Volleyball and Softball Coach; 1975-2002)
- **Ed Lundstrom** (Football, Basketball, Track, Ski Coach, Assistant Football Coach; 1958-74)
- **Shjon Podein** (Hockey; 1987-90)
- **Diane Ruhl** (Softball, Volleyball, Basketball; 1980-84)

## 2006

- **Dick Forbort** (Football; 1954-57)
- **Kerrick Johnson** (Track; 1990-93)
- **Nicky Johnson** (Basketball; 1979-83)

## 2005

- **Patty Becker** (Softball; 1989-92)
- **Eric Eversley** (Football, Track; 1964-67)
- **Bob Mason** (Hockey; 1981-83)
- **Bill Mattson** (Basketball; 1958-62)
- **Mike Sertich** (Hockey Coach, Hockey; 1965-69 and 1975-2000)

## 2004

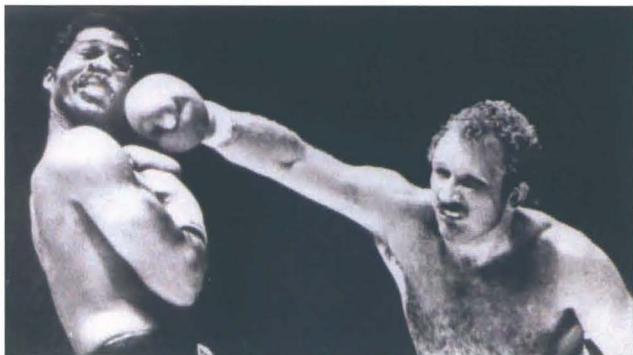
- **Denise (Holm) Olson** (Basketball; 1985-89)
- **Dan Lempe** (Hockey; 1976-80)
- **John Nachtsheim** (Football; 1960-62)



Former Notre Dame and Green Bay Packer head coach Dan Devine (left) is a UMD Athletic Hall of Fame charter member while two-time U.S. Olympian and 1980 hockey gold medalist John Harrington was inducted in 2001.



# UMD ATHLETIC HALL OF FAME



The late Scott LeDoux (right), a Bulldog football alumnus who took on 11 current or former world heavyweight champions during his professional boxing career, joined the UMD Athletic Hall of Fame in 2009.

- Mike Petrich (Baseball, Football; 1985-90)
- Dale Race (Men's Basketball Coach; 1984-98)
- Kelli (Ritzer) Thomas (Basketball, Softball; 1987-91)
- Jon Sampson (Basketball; 1955-59)
- Jerry Wherley (Football, Hockey; 1959-63)

## 2001

- Ron Busniuk (Hockey; 1967-70)
- Jay Guidinger (Basketball; 1987-91)
- Roger Hanson (Basketball; 1961-65)
- John "Bah" Harrington (Hockey; 1975-79)
- Julie (Hay) Klun (Basketball, Track; 1982-86)
- Mark Johnson (Football; 1971-74)
- Dina Kangas (Basketball; 1987-91)
- Murray Keogan (Hockey; 1969-71)
- Ron Kostelitz (Football; 1958-61)
- Dave Krmpotich (Basketball; 1971-75)
- Bob Monson (Basketball; 1955-59)
- Dave Nelson (Football, Baseball; 1974-78)
- Lori Ogren (Basketball, Volleyball, Softball; 1981-86)
- John "Connie" Pleban (Hockey Coach; 1955-59)
- Ellie Rynda (Men's and Women's Cross Country and Track Coach; 1966-93)
- Jim Malosky (Football Coach; 1958-97)

## 1999

- Jim Malosky (Football Coach; 1958-97)

## 1997

- Tom Adams (Football, Basketball; 1958-62)
- Pat Boutette (Hockey; 1970-73)
- Brett Hull (Hockey; 1984-86)
- Dave Lindstrom (Football, Basketball; 1958-61)
- Norm Maciver (Hockey; 1982-86)
- Sherri Mattson (Basketball, Softball, Volleyball; 1971-75)
- Rudy Monson (Basketball; 1947-50)
- Roy Moren (Basketball; 1933-37)
- Marsh Nelson (28-year radio voice of UMD hockey)
- Harry Oden (Basketball, Track; 1959-63)
- Mark Pavelich (Hockey; 1976-79)
- Sue Sajevic (Basketball, Softball, Volleyball; 1979-84)
- Bill Watson (Hockey; 1982-85)

## 1995

- Pat Delaney (Football; 1959-61, 1965)
- Vern Emerson (Football, Basketball; 1964-67)
- Jim Hastings (Basketball; 1942-43, 1946-49)
- Bob Hill (Hockey; 1962-66)
- Jerry Hoy (Wrestling; 1978-82)
- Gene Kotlarek (Skiing; 1960-63)
- Dave "Moose" Langevin (Hockey; 1972-76)
- Walt Ledingham (Hockey; 1969-72)
- Jayne Mackley (Basketball, Softball, Volleyball; 1977-81)
- Bob McDonald (Basketball; 1953-55)
- E.L. "Duce" Rasmussen (longtime Bulldog supporter)



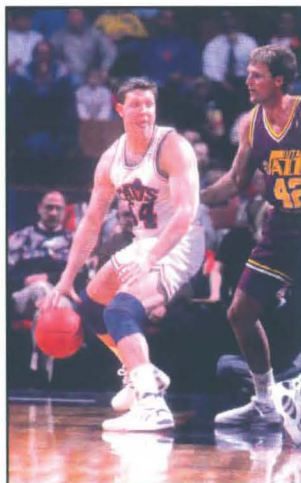
Dina Kangas (left), who amassed more points than any female or male in the history of Minnesota collegiate basketball, and fellow All-American center and one-time Cleveland Cavalier Jay Guidinger both belong to UMD Athletic Hall of Fame's Class of 2001.

## 1993

- Dave Baker (Basketball; 1957-61)
- Terry Egerdahl (Football, Baseball; 1972-76)
- Harvey Flaman (Hockey; 1955-58)
- Lee Kolquist (Golf, Baseball; 1976-80)
- Beth (McCleary) Joki (Basketball, Volleyball, Track; 1977-81)
- Norm Olson (Basketball Coach; 1954-69)
- Dick Pesonen (Football; 1958-59)
- Ralph Romano (Hockey, Hockey Coach, Athletic Director; 1954-83)
- Elmer Schwartz (Hockey; 1955-58)
- Connie (Ulander) Rankin (Track & Field, Basketball, Volleyball; 1973-77)

## 1991

- Lou Barle (Football, Basketball, Track & Field; 1934-38)
- Keith "Huffer" Christiansen (Hockey; 1963-67)
- Dan Devine (Football, Basketball; 1942-47)
- Curt Giles (Hockey; 1975-79)
- Maurice Gorham (Football, Basketball, Track; 1933-37)
- Tom Kurvers (Hockey; 1980-84)
- Ted McKnight (Football; 1973-76)
- Mike Patterson (Basketball; 1961-65)
- Lloyd Peterson (Athletic Director, Football Coach, Basketball Coach, Wrestling Coach; 1931-69)
- Glenn "Chico" Resch (Hockey; 1968-71)
- Steph Schleuder (Basketball, Badminton, Field Hockey, Softball, Tennis, Track, Volleyball, Basketball Coach, Assistant Volleyball Coach; 1968-74)
- John Vucinovich (Football, Basketball, Track; 1934-36)





# WHY THE BULLDOG?



1960s



1980s



2014



When the University of Minnesota Duluth, which was then known as Duluth State Teacher's College, launched its intercollegiate athletics program back in September 1930, the institution's four sports teams (men's basketball, football, men's hockey, and men's track and field) used the nickname "Peds", short for "Pedagogues. Uniforms at the time were adorned in green and gold -- the original school colors. In the spring of 1933, the DSTC student-athletes themselves voted on a new school mascot and chose the Bulldog. Official team colors were subsequently

switched to the current maroon and gold. Legend has it that a member of the football squad, a short and squat lineman by the name of Jack O'Hehir, was the inspiration behind the new mascot. O'Hehir, who would go on to serve as the Bulldog team captain the following year, not only looked like a bulldog, but "talked" and acted like one as well. In fact, the first drawings of the school's Bulldog logo are allegedly sketches of O'Hehir done by fellow DSTC football player Neil Scott.





**Celebrating 50 years of  
UMD Women's Athletics**

**\$50 FOR 50**

*\*donate any gift ending in "\$50" to support UMD Women's Athletics*

**to donate visit [umdbulldogs.com/donate](http://umdbulldogs.com/donate)  
(designate the "\$50 for 50 fund")**



## ANNA RAUZI

FRESHMAN MIDFIELDER · 5-4 · DULUTH, MINNESOTA (DULUTH EAST H.S.)

### BEFORE UMD

A 2015 graduate of Duluth East High School · played four seasons for the Greyhounds · received an All-Northwest Suburban Conference selection in her senior season · selected as team captain in both her junior and senior seasons · received team awards for Most Dedicated, Best Playmaker, and Most Inspirational during her four seasons at Duluth East · played on East Select club soccer team.

**PERSONAL** Born Anna Marie Rauzi on August 3, 1997 in Duluth, Minnesota · daughter of Wendy and James Rauzi · recipient of the Holy Rosary Veritas award in 2011 · member of the Northland Leadership foundation in 2011-12 · great uncle, Lino Rauzi, played football at UMD while her grandfather Charles Hiti played basketball for the Bulldogs · plans to major in bicochemistry with a minor in Spanish at UMD.



#22

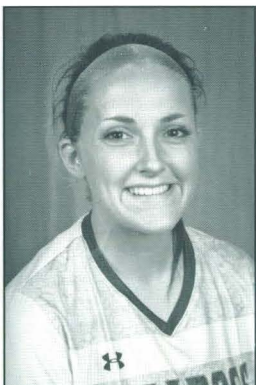
## TAYLOR NESS

FRESHMAN MIDFIELDER · 5-2 · RAMSEY, MINNESOTA (ANOKA H.S.)

### BEFORE UMD

A 2015 graduate of Anoka High School · played four seasons for the Tornados · received an All-Northwest Suburban Conference selection in her senior season · helped lead Anoka to a Section 7AA Championship and state tournament appearance · named varsity rookie of the year in 2013 and junior varsity rookie of the year in 2011 · played her club soccer for the North Metro Soccer Association.

**PERSONAL** Born Taylor Lynn Ness on May 28, 1997 in St. Louis Park, Minnesota · daughter of Chelsi & Jeff Kral and John Ness · has one sister, Alli, and step-siblings Zach and Cassi · received the Outstanding Achievement award from the Anoka-Hennepin school district in 2014 · received Superior Visual Arts award in Minnesota State High School League in 2014 · plans to major in exercise science at UMD.



#23

## EMILY ROSS

FRESHMAN MIDFIELDER · 5-6 · GREEN BAY, WISCONSIN

### BEFORE UMD

A 2015 graduate of Bay Port High School · played three seasons and started twice for the Pirates · voted team captain the past two seasons · part of a Regional Championship team in 2013 · played on Allouez United club soccer team · also played volleyball for two seasons as a defensive specialist, receiving the best teammate award.

**PERSONAL** Born Emily Sue Ross on Aug. 27, 1997 · daughter of Rhonda and Michael Ross · has one sister, Erin · member of student council, National Honor Society, and Fellowship of Christian Athletes in high school · Big Brothers, Big Sisters mentor · undecided on a major at UMD.



#24

SPECIALTY  
COFFEES



ARCO<sup>®</sup>  
coffee

*A Northland Tradition*  
SINCE 1916

**We roast only the finest beans for delicious coffees.**

*Norseman Grog - Sumatra - Espresso - Fair Trade Organic - Airpots - Brewing Equipment & Grinders - Coffee Expertise*

**Equipment on Loan & Service for office coffee and foodservice**

**Duluth family owned and roasted in Duluth/Superior since 1916**

***www.arcocoffee.com - 1-800-CUE-ARCO (283-2726) - 1-715-392-4771***





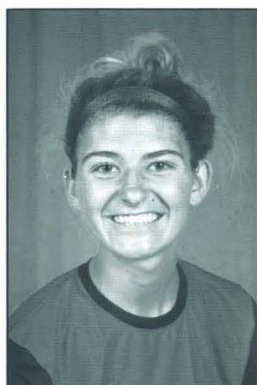
## CARLYE WRIGHT

FRESHMAN GOALKEEPER · 5-10 · NORTH OAKS, MINNESOTA (MOUNDS VIEW H.S.)

### BEFORE UMD

A 2015 graduate of Mounds View High School · played three seasons for the Mustangs · named All-Suburban East Conference Honorable Mention as a senior · played for the NSSA Blast club soccer team the past three seasons, Minnesota State Champions each of the past two seasons · also participated in basketball as a forward, earning an All-Conference Honorable Mention as a senior captain.

**PERSONAL** Born Carlye Ann Wright on Sept. 23, 1996 in St. Louis Park, Minnesota · daughter of Penny and Steve Wright · has one older brother, Mitchell · participated in National Honor Society and was a three-time Academic letterwinner at Mounds View · undecided on a major at UMD.



#26

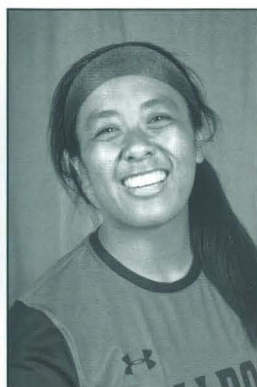
## SISLEY NG

FRESHMAN GOALKEEPER · 5-3 · WHITE BEAR LAKE, MINN. (MOUNDS PARK ACADEMY)

### BEFORE UMD

A 2015 graduate of Mounds Park Academy · six seasons for the Panthers · earned All-Independent Metro Athletic Conference honors in 2014-2015 and honorable mention in 2011-12 · served as team captain during her senior season · played her club soccer for Minnesota Thunder Academy, reaching the National playoffs during her sophomore and junior seasons, including a national runner-up performance in 2012 · also lettered in basketball as a guard and softball as a centerfielder for Mounds Park.

**PERSONAL** Born Sisley Ng on July 1, 1997 in Minnesota · daughter of Maria and Bill Ng · has one sibling, Vanick · an honor student every semester during her high school career · plans to major in exercise science at UMD.



#28

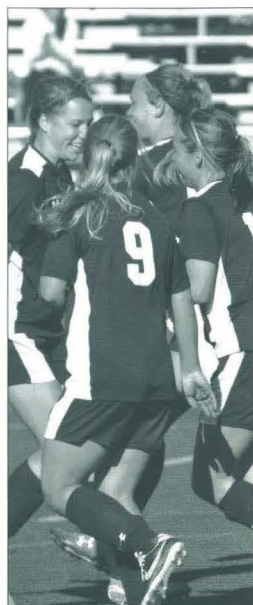


# 2014 SEASON

OVERALL: 9-10-1 · NSIC: 8-6-1 · HOME: 5-3-0 · ROAD: 4-5-1 · NEUTRAL: 0-2-0

DATE	OPPONENT	RESULT	LOCATION	ATTENDANCE
Sept. 5	Southwest Baptist	L 0-1	Warrensburg, Mo.	35
Sept. 7	Central Missouri	L 0-2	Warrensburg, Mo.	75
Sept. 12	Northern Michigan	L 1-2	Marquette, Mich.	138
Sept. 14	* ST. CLOUD STATE	W 3-0	MALOSKY STADIUM	409
Sept. 20	* MSU-Moorhead	W 4-0	Moorhead, Minn.	65
Sept. 21	* Northern State	W 1-0	Aberdeen, S.D.	91
Sept. 27	* Upper Iowa	L 0-3	Fayette, Iowa	114
Sept. 28	* Winona State	L 0-1	Winona, Minn.	379
Oct. 4	* SIOUX FALLS	W 1-0	MALOSKY STADIUM	462
Oct. 5	* SOUTHWEST MINNESOTA	L 1-2 (OT)	MALOSKY STADIUM	509
Oct. 11	* Wayne State (Neb.)	W 4-2	Wayne, Neb.	144
Oct. 12	* Augustana (S.D.)	L 1-3	Sioux Falls, S.D.	210
Oct. 17	* MINOT STATE	L 1-3	MALOSKY STADIUM	382
Oct. 19	* U-MARY	W 3-0	MALOSKY STADIUM	529
Oct. 24	* NO. 1 MINNESOTA STATE	L 0-2	MALOSKY STADIUM	352
Oct. 26	* CONCORDIA-ST. PAUL	W 2-1	MALOSKY STADIUM	700
Oct. 31	* BEMIDJI STATE	W 2-0	MALOSKY STADIUM	350
Nov. 2	* Minnesota-Crookston	T 0-0 (2OT)	Crookston, Minn.	153
Nov. 5	# No. 24 Augustana (S.D.)	W 1-0	Sioux Falls, S.D.	400
Nov. 7	# Winona State	L 0-2	Mankato, Minn.	83

\* NSIC Match | # NSIC Tournament



## INDIVIDUAL STATISTICS

NO.	PLAYER	GP-GS	MIN	G	A	PTS	SH	SHOT%	SOG	SOG%	GWG	PK
19	Maureen Stormont	18-18	1401	15	3	33	82	.183	34	.415	4	0-0
12	Megan Helberg	20-20	1582	3	4	10	37	.081	19	.514	3	0-0
23	Sheridan Reiners	17-15	1136	2	6	10	41	.049	23	.561	0	0-0
14	Jennifer Smith	20-20	1349	1	7	9	56	.018	22	.393	0	0-0
3	Marissa Ganske	20-17	1392	2	2	6	48	.042	17	.354	1	0-0
4	Hannah Keil	20-19	1458	0	6	6	30	.000	13	.433	0	0-0
18	Riley Allen	20-20	1791	1	1	3	16	.062	7	.438	0	0-0
9	Kelli Klun	19-19	1439	0	3	3	13	.000	4	.308	0	0-0
24	Kailey Beatt	18-2	625	1	0	2	18	.056	8	.444	1	0-0
10	Katie Schneider	17-13	1122	0	1	1	13	.000	5	.385	0	0-0
20	Ana Zdechlik	19-19	1496	0	1	1	3	.000	1	.333	0	0-0
15	Emily Fleissner	17-8	1024	0	1	1	1	.000	1	1.000	0	0-0
22	Jenna St. Germain	11-0	198	0	1	1	0	.000	0	.000	0	0-0
8	Taylor Johnson	19-3	667	0	0	0	6	.000	2	.333	0	0-0
13	Katie Peterson	7-1	164	0	0	0	3	.000	0	.000	0	0-0
2	Courtney Driscoll	8-1	163	0	0	0	3	.000	0	.000	0	0-0
7	Leah Nesheim	5-3	260	0	0	0	2	.000	1	.500	0	0-0
5	Kate McMahon	13-2	352	0	0	0	2	.000	1	.500	0	0-0
16	Hailey Hoff	5-0	106	0	0	0	1	.000	1	1.000	0	0-0
21	Anna Morrison	5-0	121	0	0	0	0	.000	0	.000	0	0-0
17	Nicole Becker	7-0	96	0	0	0	0	.000	0	.000	0	0-0
11	Jackie Sorenson	7-0	233	0	0	0	0	.000	0	.000	0	0-0
<b>TOTAL</b>		<b>20</b>	<b>-</b>	<b>25</b>	<b>36</b>	<b>86</b>	<b>375</b>	<b>.067</b>	<b>159</b>	<b>.424</b>	<b>9</b>	<b>0-0</b>
<b>OPPONENTS</b>		<b>20</b>	<b>-</b>	<b>24</b>	<b>19</b>	<b>67</b>	<b>226</b>	<b>.106</b>	<b>110</b>	<b>.487</b>	<b>10</b>	<b>2-2</b>

NO.	PLAYER	GP-GS	MINUTES	GA	GAA	SAVES	SV%	W	L	T	SO
1	Marissa Rosa	16-9	1468:46	18	1.10	68	.791	8	7	1	7
27	Jordan Melby	4-4	360:00	6	1.50	18	.750	1	3	0	1
<b>TOTAL</b>		<b>20</b>	<b>1828:46</b>	<b>24</b>	<b>1.18</b>	<b>86</b>	<b>.782</b>	<b>9</b>	<b>10</b>	<b>1</b>	<b>8</b>
<b>OPPONENTS</b>		<b>20</b>	<b>1828:46</b>	<b>25</b>	<b>1.23</b>	<b>134</b>	<b>.843</b>	<b>10</b>	<b>9</b>	<b>1</b>	<b>7</b>



## TEAM STATISTICS

### SHOT STATISTICS

	UMD	OPP
Goals-Shots	25-375	24-226
Goal/game	1.25	1.20
Shot pct.	.067	.106
SOG-Attempts	159-375	110-226
SOG pct.	.424	.487
Shots/Game	18.8	11.3
Assists	36	19

### CORNER KICKS

### PENALTY KICKS

### PENALTIES

Yellow cards	7	10
Red cards	-	-

### PER PERIOD STATS

GOALS	1ST	2ND	OT	20T	TOTAL
UMD	15	10	-	-	25
Opponents	10	13	1	-	24
SHOTS	1ST	2ND	OT	20T	TOTAL
UMD	190	181	2	2	375
Opponents	103	119	2	2	226
SAVES	1ST	2ND	OT	20T	TOTAL
UMD	39	45	1	1	86
Opponents	65	68	-	1	134
CORNERS	1ST	2ND	OT	20T	TOTAL
UMD	54	48	1	-	103
Opponents	31	35	1	1	68
FOULS	1 <sup>ST</sup>	2 <sup>ND</sup>	OT	20T	TOTAL
UMD	69	65	6	1	141
Opponents	80	78	2	1	161

## MATCH HIGHS

### TEAM

POINTS	14	at Wayne State (Oct. 11)
GOALS	4	at Wayne State (Oct. 11)
	4	at MSU Moorhead (Sept. 20)
ASSISTS	6	at Wayne State (Oct. 11)
SHOTS	48	at Northern State (Sept. 21)
SHOTS ON GOAL	15	St. Cloud State (Sept. 14)
SAVES	11	No. 1 Minnesota State (Oct. 23)
CORNER KICKS	12	at Northern State (Sept. 21)

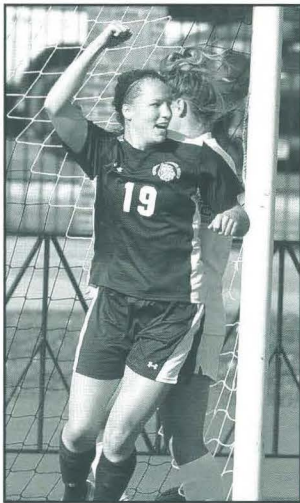
### INDIVIDUAL

POINTS	5	Maureen Stormont at Wayne State (Oct. 11)
GOALS	2	Maureen Stormont vs U-Mary (Oct. 19)
		Maureen Stormont at Wayne State (Oct. 11)
		Maureen Stormont vs St. Cloud State (Sept. 14)
ASSISTS	2	Megan Helberg vs. Bemidji State (Oct. 31)
		Jennifer Smith vs Concordia-St. Paul (Oct. 26)
		Kelli Klun vs. U-Mary (Oct. 19)
		Maureen Stormont at MSU Moorhead (Sept. 20)
		Jennifer Smith vs St. Cloud State (Sept. 14)
SHOTS 13		Maureen Stormont at Northern State (Sept. 21)
SHOTS ON GOAL	5	Megan Helberg vs U-Mary (Oct. 19)
		Maureen Stormont vs. St. Cloud State (Sept. 14)
		Maureen Stormont at Northern Mich. (Sept. 12)
SAVES 11		Marissa Rosa vs No. 1 Minnesota State (Oct. 23)





# NORTHERN SUN INTERCOLLEGIATE CONFERENCE



**NSIC OFFENSIVE PLAYER OF THE YEAR**  
**MAUREEN STORMONT**  
UMD · Senior · Forward



**NSIC NEWCOMER OF THE YEAR**  
**SHERIDAN REINERS**  
UMD · Senior · Forward

# NSIC

Northern Sun Intercollegiate Conference

**NSIC DEFENSIVE PLAYER OF THE YEAR**  
**BRE STEELE**

Minnesota State · Senior · Defender

**NSIC GOALKEEPER OF THE YEAR**  
**MOLLY MCGOUGH**

Minnesota State Mankato · Senior

**NSIC FRESHMAN OF THE YEAR**  
**SAMANTHA ARNOLD**

Augustana (S.D.) · Forward

**NSIC COACH OF THE YEAR**  
**BRANDON BARKUS**  
Augustana (S.D.)

## NSIC FIRST TEAM ALL-CONFERENCE

NAME	SCHOOL	POS.	YEAR
Madie Edwards	Upper Iowa	M	Jr.
Autumn Hayes	Southwest Minnesota	M	Sr.
<b>Megan Helberg</b>	<b>UMD</b>	<b>D</b>	<b>Sr.</b>
Madalyn Jansen	Winona State	D	Jr.
Korey Kronforst	Minnesota State	F	Jr.
Molly McGough	Minnesota State	GK	Sr.
Emily Moris	Minnesota State	M	Sr.
Payton Pry	Augustana (S.D.)	F	Sr.
Emilie Rebelo	Minot State	D	Jr.
Bre Steel	Minnesota State	D	Sr.
Stephanie Stevens	Augustana (S.D.)	M	Jr.
Sarah Stram	Bemidji State	F	So.
<b>Maureen Stormont</b>	<b>UMD</b>	<b>F</b>	<b>Sr.</b>
Aimee Wronski	Upper Iowa	F	Sr.

## NSIC SECOND TEAM ALL-CONFERENCE

NAME	SCHOOL	POS.	YEAR
Rachelle Alcini	Minnesota-Crookston	D	Sr.
Sam Arnold	Augustana (S.D.)	F	Fr.
Miranda Cadena	Southwest Minnesota	D	Jr.
Jessica Dickhaus	Upper Iowa	D	Sr.
Kendall Fisher	Southwest Minnesota	F	Jr.
Emily Hanneman	Augustana (S.D.)	D	Sr.
Megan Kilroy	Southwest Minnesota	D	Jr.
Alaina Kne	Winona State	M	Sr.
Ashley Limmer	Augustana (S.D.)	GK	Sr.
Allie Macdonald	Northern State	M	Jr.
Michelle McGeary	U-Mary	M	So.
Kiana Nickel	Minnesota State	F	So.
Dana Savino	Minnesota State	M	So.
Mackenzie Winters	St. Cloud State	D	Fr.

## NSIC THIRD TEAM ALL-CONFERENCE

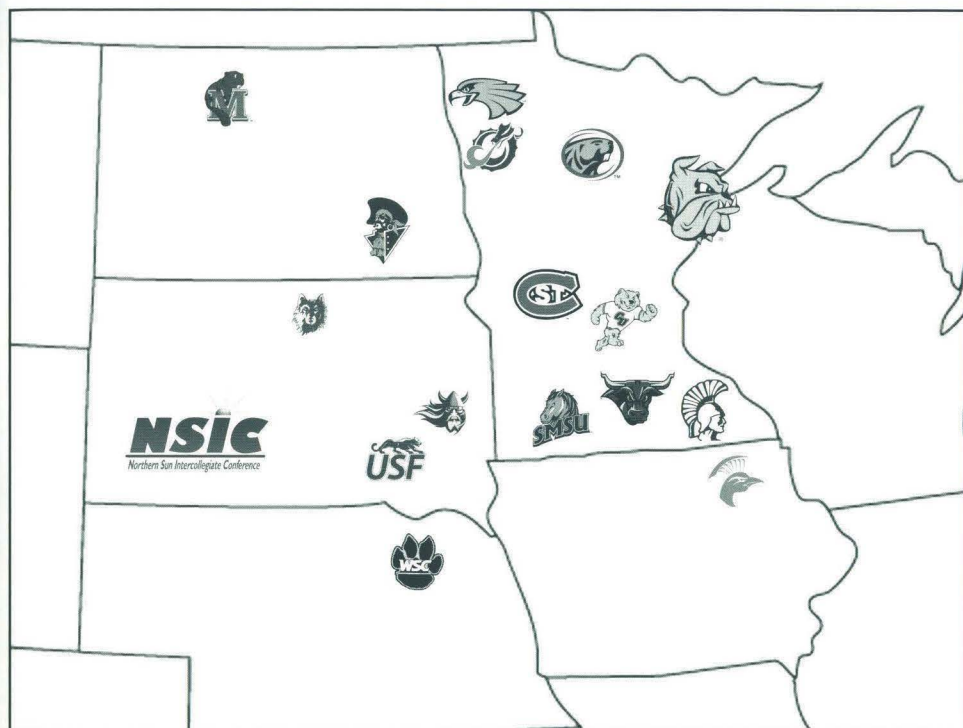
NAME	SCHOOL	POS.	YEAR
Anna Bondy	Northern State	F	So.
Kaitlyn Emanuel	Upper Iowa	GK	Jr.
Kelsey Foss	Winona State	D	So.
Rachel Gratz	Concordia-St. Paul	D	Jr.
Jamie MacFarlane	Minot State	M	Sr.
Delaney McIntyre	Minnesota-Crookston	M	Jr.
Taryn McMillan	Concordia-St. Paul	M	Jr.
Andrea Muller	U-Mary	F	Sr.
Erin Nyberg	MSU-Moorhead	M	Sr.
Abby Nyquist	Bemidji State	D	Jr.
Nicole Sames	Winona State	M	Jr.
Christine Szurek	Bemidji State	M	So.
Sydney Temple	Minnesota State	M	Sr.
Raquel Thelen	Bemidji State	F	Fr.

## ALL-NSIC HONORABLE MENTION

NAME	SCHOOL	POS.	YEAR
<b>Riley Allen</b>	<b>UMD</b>	<b>D</b>	<b>Sr.</b>
Taylor Bachman-Williams	Minot State	D	Sr.
Josie Brown	Wayne State (Neb.)	F	Jr.
Michelle Cornell	St. Cloud State	M	Jr.
Bayley Ertl	Bemidji State	F	So.
McKenzie Hallstrom	Wayne State (Neb.)	D	Jr.
Haley Lolmaugh	Minot State	D	Jr.
Alex Pantze	Southwest Minnesota	M	Sr.
<b>Sheridan Reiners</b>	<b>UMD</b>	<b>M</b>	<b>Sr.</b>
Annie Thoresen	Augustana (S.D.)	F	Sr.
Taige Thorsen	St. Cloud State	F	Sr.



# NORTHERN SUN INTERCOLLEGIATE CONFERENCE



## ALL-TIME NSIC SOCCER STANDINGS

TEAM	W-L-T	PCT.	TITLES
Winona State	168-19-8	.882	11
Minnesota State Mankato	79-11-7	.850	3
<b>UMD</b>	<b>116-31-9</b>	<b>.772</b>	<b>5</b>
Minot State	27-14-4	.644	-
U-Mary	58-30-17	.633	-
Upper Iowa	62-37-16	.609	-
Augustana (S.D.)	53-36-8	.587	-
St. Cloud State	49-39-8	.552	-
Northern State	77-89-25	.469	-
Bemidji State	82-96-17	.464	-
Southwest Minnesota State	79-99-17	.449	-
Minnesota-Morris *	16-24-2	.405	-
Concordia-St. Paul	57-114-9	.340	-
Wayne State (Neb.)	54-113-13	.336	-
MSU Moorhead	57-126-12	.323	1
Minnesota-Crookston	27-133-16	.199	-
Sioux Falls	4-39-2	.111	-

\* No longer a member of the NSIC

## NSIC/U.S. BANK ALL-TOURNAMENT TEAM

NAME	SCHOOL	POS.	YEAR
Kati Baker	Winona State	M	Jr.
Kaitlyn Emanuel	Upper Iowa	GK	Jr.
<b>Megan Helberg</b>	<b>UMD</b>	<b>D</b>	<b>Sr.</b>
Madalyn Jansen	Winona State	D	Jr.
Molly McGough	Minnesota State Mankato	GK	Sr.
Emily Moris	Minnesota State Mankato	M	Sr.
Rachel Oleson	Winona State	GK	Fr.
<b>Sheridan Reiners</b>	<b>UMD</b>	<b>F</b>	<b>Jr.</b>
Bre Steele	Minnesota State Mankato	D	Sr.
Aimee Wronski	Upper Iowa	F	Sr.

## MOST VALUABLE PLAYER

**SIDNI TROTTER**

Minnesota State Mankato · Sophomore · Defender



# POSTSEASON HONORS

## ALL-NSIC

2014	Megan Helberg.....	First Team
2014	Maureen Stormont.....	First Team
2014	Riley Allen.....	Honorable Mention
2014	Sheridan Reiners.....	Honorable Mention
2013	Maureen Stormont.....	First Team
2013	Dani Potter.....	First Team
2013	Megan Helberg.....	Third Team
2013	Kelli Klun.....	Third Team
2013	Riley Allen.....	Honorable Mention
2012	Maureen Stormont.....	First Team
2012	Dani Potter.....	Second Team
2012	Kelsey Gratz.....	Honorable Mention
2011	Reegan Lloyd.....	First Team
2011	Dani Potter.....	First Team
2011	Maureen Stormont.....	Second Team
2011	Kelsey Gratz.....	Honorable Mention
2010	Maria Leider.....	First Team
2010	Reegan Lloyd.....	First Team
2010	Hannah Bengtson.....	Second Team
2010	Dani Potter.....	Second Team
2010	Mallory Fox.....	Third Team
2010	Molly Nepote.....	Third Team
2010	Becky Anderson.....	Honorable Mention
2009	Hanna Bengtson.....	First Team
2009	Clare Dahmen.....	First Team
2009	Maria Leider.....	First Team
2009	Reegan Lloyd.....	First Team
2009	Alex Paffrath.....	Second Team
2009	Kelly Duchene.....	Honorable Mention
2008	Clare Dahmen.....	First Team
2008	Hannah Bengtson.....	Second Team
2008	Stacey Prodaniuk.....	Third Team
2008	Maria Leider.....	Third Team
2008	Meghan Roth.....	Third Team
2008	Kelly Duchene.....	Honorable Mention
2003	Leslie Stoen.....	First Team
2003	Nicole Fietz.....	First Team
2003	Cathy Wallace.....	First Team
2003	Mira Muikku.....	Honorable Mention
2003	Kristine Kruger.....	Honorable Mention
2002	Nicole Fietz.....	First Team
2002	Kristine Kruger.....	First Team
2002	Mira Muikku.....	First Team
2002	Camilla Andersson.....	Honorable Mention
2002	Pam Lensing.....	Honorable Mention
2002	Katy Murphy.....	Honorable Mention
2001	Nicole Feitz.....	First Team
2001	Linda Kalweit.....	First Team
2001	Andi Perrizo.....	First Team
2001	Jenny Warrick.....	Honorable Mention
2000	Michele Filipczak.....	First Team
2000	Nicole Fietz.....	First Team
2000	Linda Kalweit.....	First Team
2000	Liz Smith.....	First Team
2000	Jenny Warrick.....	First Team
1999	Jenny Warrick.....	First Team
1999	Beth Byers.....	First Team

1999	Sara Hay.....	First Team
1999	Erin Munkeby.....	First Team
1999	Andi Perrizo.....	First Team
1999	Michele Filipczak.....	First Team
1999	Holly Eggebraaten.....	Honorable Mention
1999	Liz Smith.....	Honorable Mention
1998	Jenny Warrick.....	First Team
1998	Beth Byers.....	First Team
1998	Ginger Jeffrey.....	First Team
1997	Amy Bruno.....	First Team
1997	Beth Byers.....	First Team
1997	Ginger Jeffrey.....	First Team
1997	Sharon Lahti.....	First Team
1997	Amanda Neils.....	First Team
1997	Sarah Opheim.....	First Team
1996	Sharon Lathi.....	First Team
1996	Missy Sulzbach.....	First Team

## ALL-NIC

2007	Heather Cutter
2007	Briana Francisco
2006	Abbey Bollig
2006	Lisa Leurd
2006	Briana Francisco
2006	Clare Dahmen
2005	Abbey Bollig
2005	Pam Lensing

## NSIC OFFENSIVE PLAYER OF THE YEAR

2014	Maureen Stormont
1999	Jenny Warrick
1997	Sharon Lahti

## NSIC DEFENSIVE PLAYER OF THE YEAR

2011	Reegan Lloyd
2009	Hannah Bengtson

## NSIC NEWCOMER OF THE YEAR

2014	Sheridan Reiners
------	------------------

## NSIC WILLIS R. KELLY AWARD

2010	Becky Anderson
------	----------------

## NSIC MYLES BRAND ALL-ACADEMIC AWARD

UMD set a new standard for academic excellence in 2014 when four Bulldogs earned the NSIC's Myles Brand All-Academic with Distinction Award for achieving 3.75 GPA through their senior season. Courtney Driscoll, Katie Schneider, Maureen Stormont, and Ana Zdechlik actually doubled the previous total of Bulldogs to earn the honor.

2014	Courtney Driscoll
2014	Katie Schneider
2014	Maureen Stormont
2014	Ana Zdechlik
2013	Dani Potter
2012	Kristi Mehrman
2010	Becky Anderson



# POSTSEASON HONORS

## NECAA SCHOLAR ALL-AMERICAN

2013	Maureen Stormont	First Team
2012	Dani Potter	Third Team
2010	Maria Leider	First Team
2009	Clare Dahmen	Third Team
2009	Maria Leider	Third Team
2005	Pam Lensing	Second Team
2003	Nicole Fietz	Third Team
2001	Jenny Warrick	Third Team
2000	Jenny Warrick	Third Team
1997	Sharon Lahti	Second Team

## NECAA ACADEMIC ALL-REGION

2014	Maureen Stormont	Second Team
2014	Riley Allen	Honorable Mention
2014	Megan Helberg	Honorable Mention
2013	Maureen Stormont	First Team
2013	Dani Potter	Second Team
2013	Riley Allen	Second Team
2010	Maria Leider	First Team
2010	Lauren Graydon	Third Team
2010	Whitney Wilson	Honorable Mention
2009	Clare Dahmen	First Team
2009	Maria Leider	First Team
2009	Kelly DuChene	Second Team
2009	Alex Paffrath	Third Team
2003	Nicole Fietz	First Team
2001	Jenny Warrick	First Team
2000	Jenny Warrick	First Team
1999	Sara Hay	Second Team
1998	Kelly Fritz	Second Team
1998	Sara Hay	Second Team
1997	Sharon Lahti	First Team
1997	Kelly Fritz	Second Team

## OSIDA ACADEMIC ALL-REGION

2013	Dani Potter	First Team
2013	Maureen Stormont	Third Team
2012	Kristi Mehrman	First Team
2011	Kristi Mehrman	First Team
2010	Becky Anderson	First Team
2010	Maria Leider	First Team
2009	Becky Anderson	First Team
2009	Alex Paffrath	Third Team
2008	Becky Anderson	First Team
2008	Alex Paffrath	First Team
2003	Nicole Fietz	First Team

## CAPITAL ONE ACADEMIC ALL-AMERICA

2010	Becky Anderson	First Team
2010	Maria Leider	Third Team

## EFN MAGAZINE ACADEMIC ALL-REGION

2005	Pam Lensing	Second Team
------	-------------	-------------

## NECAA ALL-CENTRAL REGION

2014	Maureen Stormont	Second Team
2013	Maureen Stormont	First Team
2013	Dani Potter	Second Team
2013	Riley Allen	Third Team
2012	Dani Potter	Third Team
2012	Maureen Stormont	Third Team
2010	Maria Leider	First Team
2010	Reegan Lloyd	First Team
2010	Hannah Bengtson	Third Team
2010	Mallory Fox	Third Team
2009	Clare Dahmen	First Team
2009	Maria Leider	Second Team
2009	Reegan Lloyd	Second Team
2009	Hannah Bengtson	Third Team
2006	Abbey Bollig	Third Team
2006	Briana Francisco	Third Team
2005	Pam Lensing	Second Team
2003	Nicole Fietz	First Team
2003	Leslie Stoen	First Team
2003	Cathy Wallace	Second Team
2003	Mira Muikku	Third Team
2002	Nicole Fietz	First Team
2001	Linda Kalweit	Second Team
2001	Liz Smith	Second Team
2000	Linda Kalweit	First Team
2000	Jenny Warrick	Second Team
2000	Nicole Fietz	Second Team
2000	Cathy Wallace	Second Team
1999	Jenny Warrick	Second Team
1999	Michele Filipczak	Second Team
1998	Beth Byers	Second Team
1998	Jenny Warrick	Second Team
1997	Beth Byers	Second Team
1997	Sharon Lahti	Second Team
1995	Erika Ludwig	First Team
1995	Ginger Jeffrey	Second Team
1995	Kelly Fritz	Honorable Mention
1995	Jen Thompson	Honorable Mention

## NECAA ALL-AMERICAN

2010	Maria Leider	Second Team
------	--------------	-------------

## DAKTRONICS ALL-REGION

2014	Megan Helberg	First Team
2014	Maureen Stormont	First Team
2013	Dani Potter	First Team
2013	Maureen Stormont	Second Team
2013	Megan Helberg	Second Team
2012	Maureen Stormont	Second Team
2011	Reegan Lloyd	First Team
2011	Riley Allen	Second Team
2010	Maria Leider	First Team
2010	Reegan Lloyd	First Team
2009	Clare Dahmen	First Team
2009	Hannah Bengtson	First Team
2008	Maria Leider	First Team
2006	Clare Dahmen	Second Team

# EVERY BATTERY FOR EVERY NEED<sup>®</sup>

## Thousands of Battery Solutions

From hearing aid, laptop and cellphone batteries to motorcycle, boat and car batteries, Interstate All Battery Center<sup>®</sup> has you covered. Come see us today!



**20% OFF ANY PURCHASE**  
SINGLE-ITEM

EXCLUDING SLI. Not valid on car, truck, motorcycle or marine batteries. Not valid with other offers or discounts. Valid on retail purchases at participating stores only. See store for details. CDMP174

Expires 6/1/2016

**INTERSTATE**  
ALL BATTERY CENTER



**Interstate All Battery Center**  
426 John Ave  
Superior, WI 54880

**POWERING THE THINGS THAT MAKE LIFE BETTER™**



© 2013 Interstate Battery Franchising and Development, Inc. | BB: 25973 | 08/13

## PROUD SPONSOR OF UMD ATHLETICS

### *Welcome to the End of the Day!*

### Special UMD Rates!

- ▶ Newly Renovated Guest Rooms
- ▶ New Fitness Center Now Open
- ▶ Free Hot Home Style Breakfast
- ▶ 100% Smoke Free Guest Rooms
- ▶ Whirlpool, Fireplace & Family Suites Available
- ▶ Large Indoor Rec Area with Pool, Whirlpool & Sauna
- ▶ Black Woods Bar & Grill connected to Hotel



**AmericInn Hotel & Suites**  
Duluth-South  
185 HWY 2 - Proctor, MN 55810  
218-624-1026 - Fax 218-624-2818  
[www.AmericInnDuluthSouth.com](http://www.AmericInnDuluthSouth.com)  
Email: [duluthsouth.mn@americinn.com](mailto:duluthsouth.mn@americinn.com)





# RECORD BOOK

## SEASON RECORDS

### INDIVIDUAL

Points	43	.....Maureen Stormont (2013)
Goals	18	.....Maureen Stormont (2013)
Assists	11	.....Pam Lensing (2003)
Saves	140	.....Ginger Jeffrey (1996)
Wins	17	.....Marissa Rosa (2013)
	17	.....Michele Filipczak (2000)
Shutouts	14.5	.....Michele Filipczak (2000)
GAA	0.25	.....Ginger Jeffrey (1995)

### TEAM

Wins	17	..... 2013, 2009, 2000
Losses	11	..... 2008, 2005
Goals Scored	76	..... 1997
Fewest Goal Scored	10	..... 1994
Goals Allowed	43	..... 2005
Fewest Goals Allowed	10	..... 2000
Shutouts	*17	..... 2000
Consecutive Shutouts	9	..... Sept. 23-Oct. 22, 2000
Shutouts Against	8	..... 2007
Saves	158	..... 1995
Goals Against Average	0.46	..... 2000
Consecutive Wins	9	..... Sept. 27-Oct. 25, 1998
		..... Sept. 2-Oct. 16, 1999
		..... Sept. 17-Oct. 20, 2001
		..... Sept. 22-Oct. 20, 2002
		..... Sept. 28-Oct. 31, 2003
Unbeaten Streak	14	..... Sept. 27-Nov. 8, 2003
Winless Streak	7	..... Aug. 28-Sept. 20, 2008
Consecutive Losses	6	..... Aug. 28-Sept. 12, 2008
Overtime Games	7	..... 2004
Consec. OT Games	5	..... Sept. 5-Sept. 26, 2004
One-Goal Games	14	..... 2008 (3-11)
Games Played	23	..... 2013
Home Wins	11	..... 2013
Home Losses	6	..... 2005
Home Ties	3	..... 2004
Road Wins	8	..... 2000
Road Losses	6	..... 1996
Road Ties	3	..... 2003
Winning Percentage	.857	..... 2000 (17-2-2)

\* NCAA Division II Record

## CAREER RECORDS

Goals	54	.....Maureen Stormont (2011-14)
Assists	33	.....Nicole Fietz (2000-03)
Points	126	.....Maureen Stormont (2011-14)
Games	83	.....Nicole Fietz (2000-03)
GWG	19	.....Jenny Warrick (1998-2001)
Consecutive Games with a Goal	6	.....Jenny Warrick (1998-2001)
Games (GK)	56	.....Briana Francisco (2004-07)
Wins (GK)	39	.....Michele Filipczak (1997-2000)
Saves	334	.....Ginger Jeffrey (1995-98)
Shutouts	28.5	.....Michele Filipczak (1997-2000)

## GAME RECORDS

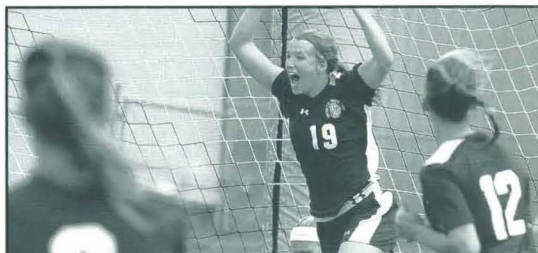
### INDIVIDUAL

Points	8	..... Jenny Warrick vs. Bemidji State (Oct. 10, 1998)
	8	..... Erika Ludwig vs. MSU-Moorhead (Oct. 15, 1995)
Goals	4	..... Erika Ludwig vs. MSU-Moorhead (Oct. 15, 1995)
Assists	5	..... Jessica Nelson vs. Bemidji State (Oct. 19, 1997)
Saves	18	..... Kim Zelinsky vs. Minnesota (Sept. 13, 1995)

### TEAM

Points	56	vs. Bemidji State (W 16-0, Oct. 19, 1997)
Goals	16	vs. Bemidji State (W 16-0, Oct. 19, 1997)
Goals Allowed	9	vs. Minnesota (L 0-9, Sept. 13, 1995)
Goals in a Half	12	vs. Bemidji State (W 16-0, Oct. 19, 1997)
Goals Allowed in a Half	5	(three occasions)
Assists	*24	vs. Bemidji State (W 15-0, Sept. 15, 1996)
Shots	68	vs. Bemidji State (W 16-0, Oct. 19, 1997)
Shots Allowed	30	vs. Minnesota (L 0-5, Oct. 6, 1996)
Shots on Goal	58	vs. Bemidji State (W 15-0, Sept. 15, 1996)
Fewest Shots on Goal	0	vs. Minnesota (L 0-9, Sept. 13, 1995)

\* NCAA Division II Record



## CAREER LEADERS

### POINTS

1. Maureen Stormont (2011-14)	126
2. Jenny Warrick (1998-2001)	125
3. Beth Byers (1996-99)	105
4. Nicole Fietz (2000-03)	103
5. Cathy Wallace (2000-03)	88
6. Dani Potter (2010-13)	82
7. Pam Lensing (2002-05)	78
8. Amy Bruno (1994-97)	62
8. Sarah Noonan (2002-05)	62
10. Clare Dahman (2006-09)	59

### GOALS

1. Maureen Stormont (2011-14)	54
2. Jen Warrick (1998-2001)	52
3. Beth Byers (1996-99)	41
4. Nicole Fietz (2000-03)	35
5. Cathy Wallace (2000-03)	32
6. Dani Potter (2010-13)	30
7. Amy Bruno (1994-97)	27
8. Pam Lensing (2002-05)	24
9. Sarah Noonan (2002-05)	23
10. Erika Ludwig (1994-96)	21
10. Clare Dahman (2006-09)	21

### ASSISTS

1. Nicole Fietz (2000-03)	33
2. Pam Lensing (2002-05)	30
3. Jennifer Smith (2011-14)	26
4. Becky Anderson (2007-10)	24
4. Cathy Wallace (2000-03)	24
6. Beth Byers (1996-99)	23
7. Dani Potter (2010-13)	22
8. Jenny Warrick (1998-01)	21
9. Hannah Keil (2011-14)	20
10. Leslie Stoen (2000-03)	19
10. Holly Eggbraaten (1999-03)	19

### SAVES

1. Briana Francisco (2004-07)	330
2. Hannah Bengston (2008-10)	289
3. Ginger Jeffrey (1995-98)	233
4. Marissa Rosa (2012-14)	206
5. Michele Filipczak (1997-00)	196
6. Mira Muikku (2001-03)	191
7. Kim Zelinsky (1994-95)	141
8. Hanna Iazzo (2009-12)	121
9. Jacqui Merryman (2000-03)	89
10. Kari Stellmaker (2004-05)	59

# Chest Pain?

**Don't ignore the warning signs; call 9-1-1!**

Chest Pain and other possible warning signs of a heart attack need to be taken seriously. Heart muscle dies when you have a heart attack. Early recognition and prompt medical attention can mean the difference between life and death.

Studies show that people with chest pain who call 9-1-1 are more likely to receive the life-saving care they need more quickly than those who do not call 9-1-1. The same research demonstrates that calling 9-1-1 gets you to a hospital catheterization (cath) lab faster than driving yourself or getting a ride from a family member. This means by calling 9-1-1 you have a better chance to save irreplaceable heart muscle and to survive a heart attack.

Gold Cross Paramedics carry life-saving equipment, enabling them to assess types of heart attacks and get patients to the most appropriate care setting. Gold Cross paramedics can even confirm when a patient needs to go to a cath lab before arriving at the hospital—saving precious time and heart muscle.

**Driving yourself or others to the hospital for treatment of chest pain has actually been shown to be the slowest option for getting the care you need and it can have harmful results.**

Gold Cross Paramedics: the best care for every patient, every day.



**GoldCross**<sup>®</sup>

[www.mayomedicaltransport.com](http://www.mayomedicaltransport.com)

Gold Cross is part of Mayo Clinic Medical Transport, an integrated system of medical care and transportation that also includes Mayo MedAir ambulance, Mayo One emergency helicopters and Mayo Emergency Communications Center.

©2014 Mayo Foundation for Medical Education and Research | MC2559-108rev0814



# YEAR-BY-YEAR RESULTS

**1994 Overall 8-4-1 Varsity 2-4-1**

**Home 5-2-0 Road 3-2-1**

**Head Coach** Greg Cane, first season

**Captain** Erika Ludwig

**OPPONENT (DATE)**

Minnesota State (9/16)	W 3-0
Minnesota State (9/17)	W 3-0
St. Cloud State (9/18)*	T 0-0
Wisconsin Superior (9/21)*	W 4-0
Wisconsin Stout (9/24)	W 4-0
Concordia-Moorhead (10/7)*	W 3-1
North Dakota State (10/8)	W 2-1
MSU-Moorhead (10/9)	W 7-0
St. Scholastica (10/12)*	L 0-2
St. Cloud State (10/15)*	L 1-2
Lakehead (10/16)	W 2-1
St. Scholastica (10/22)*	L 2-4
St. Thomas* (10/24)	L 0-2

\*Varsity Teams



**1995 Overall 13-4-1 Varsity 2-4-1**

**Home: 5-2-0 Road: 3-2-1 Neutral 2-1-0**

**Head Coach** Greg Cane, second season

**Captain** Anne Johnson

**OPPONENT (DATE)**

North Dakota State (9/2)	W 2-0
St. Mary's (9/4)	L 0-3
U-Mary (9/9)	W 2-0
North Dakota State (9/10)	W 2-0
Minnesota (9/13)	L 0-9
St. Cloud State (9/17)	L 0-3
Winona State (9/23)	W 12-0
St. Scholastica (9/27)	W 5-2
Moorhead State (9/30)	W 3-0
Wisconsin Parkside (10/1)	L 0-1
Kansas (10/6)	W 2-0
Wisconsin River Falls (10/8)	W 2-1
Concordia-St. Paul (10/14)	W 5-0
MSU-Moorhead (10/15)	W 8-0
St. Benedict (10/21)	W 2-1
St. Thomas (10/22)	T 2-2
St. Cloud State (10/27)	W 2-0
Minnesota State (10/28)	W 2-0

**1996 Overall 10-9-1 NSIC 2-2-0 (third)**

**Home 4-3-0 Road 5-7-1**

**Head Coach** Greg Cane, third season

**Captain** Anne Johnson, Amanda Nellis, Kelly Byers

**OPPONENT (DATE)**

Augsburg (8/31)	L 0-1
St. Thomas (9/1)	L 1-2
Indianapolis (9/7)	W 3-1
St. Joseph's (Ind.) (9/8)	L 0-6
Northern Michigan (9/13)	W 8-0
Bemidji State (9/15)	W 15-0
St. Scholastica (9/18)	W 1-0
Oklahoma (9/21)	W 3-1
Iowa State (9/22)	L 0-2
Wisconsin Eau Claire (9/27)	W 1-0
Wisconsin River Falls (9/29)	W 3-1
Minnesota (10/6)	L 0-5
Macalester (10/11)	L 0-5
Southwest Minn. State (10/12)*	W 7-0
St. Benedict (10/16)	L 0-1
Southwest Minn. State (10/19)*	W 10-0
MSU-Moorhead (10/20)*	L 0-1
Minnesota State (10/26)	W 4-2
St. Cloud State (11/2)	T 2-2
Winona State (11/3)*	L 3-4

**1997 Overall 11-4-2 NSIC 4-0-0 (first)**

**Home 7-2-2 Road 2-2-0 Neutral 2-0-0**

**Head Coach** Greg Cane, fourth season

**Captain:** Amanda Nellis, Sarah Opheim

**OPPONENT (DATE)**

St. Joseph's (Ind.) (8/31)	W 3-1
St. Cloud State (9/7)	T 0-0
St. Thomas (9/13)	L 1-4
Wisconsin Eau Claire (9/14)	L 1-2
Macalester (9/16)	L 0-1
Carleton (9/20)	W 3-0
St. Scholastica (9/21)	W 2-0
Minnesota State (9/27)	L 1-3
Northland (Wis.) (9/29)	W 10-1
Winona State (10/4)*	W 2-0
MSU-Moorhead (10/5)*	W 3-1
Wisconsin River Falls (10/11)	T 1-1
Minnesota Crookston (10/12)	W 13-0
Southwest Minn. State (10/14)*	W 10-1
Bemidji State (10/19)*	W 16-0
Southwest Minn. State (10/25)#	W 9-0
MSU-Moorhead (10/26)#	W 2-0 OT

## LEGEND

\* Northern Sun Intercollegiate Conference Match  
(North Central Conference from 2004-2007)

# NSIC Tournament Match

% NCAA Division-II Tour. Match



# YEAR-BY-YEAR RESULTS

**1998 Overall** 11-5-0 **NSIC** 5-1-0 (third)

**Home** 7-0-0 **Road** 4-4-0 **Neutral** 0-1-0

**Head Coach** Greg Cane, fifth season

**Captain** Kelly Fritz, Ann Goldade

**OPPONENT (DATE)**

St. Scholastica (9/6)	W 8-1
Minnesota (9/7)	L 0-7
Northern Michigan (9/13)	W 3-0
North Dakota State (9/18)	L 1-3
MSU-Moorhead (9/19)	L 1-3
Minnesota State (9/27)	W 1-0
Minn. Morris (10/3)*	W 5-0
Northern State (10/4)*	W 1-0
Bemidji State (10/10)*	W 11-0
Southwest Minn. State (10/11)*	W 4-1
Winona State (10/16)*	W 2-1
Minnesota Morris (10/23)#	W 5-0
MSU-Moorhead (10/24)#	W 2-0
Winona State (10/25)#	W 2-1
So. Ill. Edwardsville (10/31)	L 2-6
Missouri-St. Louis (11/1)	L 0-2



**1999 Overall** 14-3-1 **NSIC** 8-1-0 (second)

**Home** 5-1-1 **Road** 7-1-0 **Neutral** 2-1-0

**Head Coach** Greg Cane, sixth season

**Captain** Beth Byers, Sara Hay, Emily Opheim

**OPPONENT (DATE)**

Minnesota State (8/27)	W 2-1
Missouri-St. Louis (8/28)	L 1-2
St. Cloud State (9/2)	W 2-0
Northern Michigan (9/12)	W 5-0
Moorhead State (9/25)*	W 2-1
Minnesota Crookston (9/26)*	W 7-0
Bemidji State (10/1)*	W 10-0
St. Scholastica (10/6)	W 6-0
Northern State (10/9)*	W 1-0
Minnesota Morris (10/10)*	W 3-0
Concordia-St. Paul (10/16)*	W 6-0
Winona State (10/17)*	L 0-1
Southwest Minn. State (10/23)*	W 4-3
Wayne State (NE) (10/24)*	W 5-2
Bemidji State (10/29) #	W 4-1
Southwest Minn. State (10/30) #	W 3-1
Winona State (10/31) #	L 1-3
North Dakota State (11/7)	T 0-0

## LEGEND

\* Northern Sun Intercollegiate Conference Match  
(North Central Conference from 2004-2007)

# NSIC Tournament Match

% NCAA Division-II Tour. Match

**2000 Overall** 17-2-2 **NSIC** 8-0-1 (T-first)

**Home** 6-1-0 **Road** 8-1-1 **Neutral** 3-0-1

**Head Coach** Greg Cane, seventh season

**Captain** Linda Kalweit, Heather Lowinske, Michele Filipczak

**OPPONENT (DATE)**

Indianapolis (8/26)	W 2-1
St. Joseph's (Ind.) (8/27)^	W 1-0
St. Cloud State (9/1)	W 1-0
Truman State (Mo.) (9/3)\$	W 3-0
Northern Michigan (9/4)	W 7-0
North Dakota State (9/9)	W 1-0
North Dakota (9/10)	W 3-0
Minnesota State (9/16)	L 1-2
MSU-Moorhead (9/23) *	W 3-0
Minnesota Crookston (9/24) *	W 2-0
Bemidji State (9/28) *	W 3-0
Northern State (10/7) *	W 2-0
Minnesota Morris (10/8) *	W 2-0
Concordia-St. Paul (10/14) *	W 7-0
Winona State (10/15) *	T 0-0
Southwest Minn. State (10/21) *	W 1-0
Wayne State (Neb.) (10/22) *	W 2-0
MSU-Moorhead (10/27) #	W 4-1
Wayne State (Neb.) (10/28) #	T 0-0
Southwest Minn. State (10/29) #	W 4-0
Northern Kentucky (11/11) %	L 2-6

**2001 Overall** 15-4-1 **NSIC** 7-1-1 (first)

**Home** 5-1-0 **Road** 5-1-1 **Neutral** 5-2-0

**Head Coach** Greg Cane, eighth season

**Captain** Linda Kalweit, Andi Perrizo, Jenny Warrick

**OPPONENT (DATE)**

Minnesota State (8/25)	W 1-2
Neb.-Omaha (9/1)	W 3-2
St. Cloud State (9/2)	W 2-1
Truman State (MO) (9/8)	L 0-1
Northern Colorado (9/9)	L 2-4
North Dakota State (9/17)	W 1-0
Hillsdale (Mich.) (9/22)	W 2-1
Northern Michigan (9/23)	W 2-1
Wayne State (Neb.) (9/29)*	W 3-1
Southwest Minn. State (9/30)*	W 3-1
Minnesota Crookston (10/6)*	W 4-0
MSU-Moorhead (10/7)*	W 1-0
Bemidji State (10/12)*	W 2-1
Minnesota Morris (10/20)*	W 2-0
Northern State (10/21)*	T 0-0
Winona State (10/27)*	L 1-2
Concordia-St. Paul (10/28)*	W 10-0
Minnesota Morris (11/2) #	W 5-2
Northern State (11/3) #	W 3-0
Winona State (11/4) #	W 2-0



# YEAR-BY-YEAR RESULTS

**2002 Overall 15-5-2 NSIC 8-1-0 (first)**

**Home 8-1-0 Road 4-3-2 Neutral 3-1-0**

**Head Coach** Greg Cane, ninth season

**Captain** Nicole Fietz

**OPPONENT (DATE)**

Harding (Ark.) (8/30)  
 Christian Brothers (Tenn.) (9/1)  
 Minnesota State (9/7)  
 Northwest Missouri State (9/8)  
 St. Cloud State (9/14)  
 Neb.-Omaha (9/21)  
 South Dakota State (9/22)  
 Wayne State (Neb.) (9/28)\*  
 Southwest Minn. State (9/29)\*  
 Minnesota Crookston (10/5)\*  
 MSU-Moorhead (10/6)\*  
 Bemidji State (10/10)\*  
 Northern Michigan (10/12)\*  
 Minnesota Morris (10/19)\*  
 Northern State (10/20)#  
 Winona State (10/26)  
 Concordia-St. Paul (10/27)  
 North Dakota State (11/2)  
 North Dakota (11/3)  
 Concordia-St. Paul (11/5) #  
 Southwest Minn. State (11/8) #  
 Winona State (11/9) #

**2003 Overall 14-3-3 NSIC 8-0-0 (first)**

**Home 5-2-0 Road 7-1-3 Neutral 2-0-0**

**Head Coach** Greg Cane, tenth season

**Captain** Nicole Fietz

**OPPONENT (DATE)**

Neb.-Omaha (8/29)  
 St. Scholastica (9/9)  
 South Dakota State (9/13)  
 North Dakota State (9/14)  
 Bemidji State (9/20)\*  
 North Dakota (9/21)  
 Truman State (9/27)  
 Northwest Mo. State (9/28)  
 Winona State (10/4)\*  
 Northern State (10/11)\*  
 Southwest Minn. State (10/12)\*  
 Wayne State (10/18)\*  
 Concordia-St. Paul (10/19)\*  
 Minnesota Crookston (10/25)\*  
 MSU-Moorhead (10/26)\*  
 St. Cloud State (10/31)  
 Minnesota State (11/1)  
 Concordia-St. Paul (11/4) #  
 Wayne State (11/7) #  
 Winona State (11/8) #

**RESULT**

W 4-3  
 L 0-6  
 L 2-4  
 W 4-0  
 W 3-0  
 L 0-3  
 W 1-0  
 W 4-0  
 W 2-0  
 W 4-0  
 W 4-0  
 W 10-0  
 W 2-1  
 W 2-0  
 W 2-0  
 L 0-2  
 W 4-1  
 T 0-0  
 T 1-1  
 W 3-0  
 W 3-0  
 L 0-2

**RESULT**

L 0-2  
 W 7-0  
 T 0-0  
 L 4-3  
 W 5-0  
 L 2-1  
 T 0-0  
 W 2-1  
 W 1-0  
 W 1-0  
 W 5-0  
 W 2-1  
 W 5-0  
 W 5-0  
 W 4-0  
 W 3-1  
 T 0-0  
 W 5-0  
 W 8-1  
 W 2-1

**2004 Overall 3-8-4 NCC 1-3-0 (sixth)**

**Home 2-2-3 Road 1-4-1 Neutral 0-2-0**

**Head Coach** Greg Cane, 11th season

**Captain** Patty Kelly, Pam Lensing

**OPPONENT (DATE)**

Truman State (8/29)  
 St. Scholastica (9/1)  
 Bemidji State (9/2)  
 Rockhurst (9/5)  
 Northern Michigan (9/6)  
 Mary (9/10)  
 Winona State (9/12)\*  
 Northern Michigan (9/26)  
 South Dakota (10/1)\*  
 Augustana (10/3)\*  
 Neb.-Omaha (10/10)\*  
 North Dakota (10/15)\*  
 St. Cloud State (10/17)\*  
 Minnesota State (10/23)\*  
 North Dakota (10/31)\*

**RESULT**

L 0-4  
 W 4-1  
 L 4-5  
 L 1-2  
 T 1-1  
 T 2-2  
 T 0-0  
 W 3-2  
 L 1-3  
 W 1-0  
 L 0-4  
 L 1-4  
 T 1-1  
 L 0-1  
 L 0-1

**2005 Overall 8-11-0 NCC 3-9-0 (fifth)**

**Home 3-5-0 Road 3-6-0 Neutral 2-0-0**

**Head Coach** Greg Cane, 12th season

**Captain** Pam Lensing, Sarah Noonan, Rachael Ferrin

**OPPONENT (DATE)**

Truman State (8/26)  
 Southwest Minn. State (8/27)  
 Concordia-St. Paul (8/30)  
 Winona State (9/2)  
 St. Scholastica (9/7)  
 Northern Michigan (9/10)  
 Minnesota State (9/16)\*  
 St. Cloud State (9/18)  
 Augustana (9/23)\*  
 Neb.-Omaha (9/25)\*  
 St. Cloud State (10/1)\*  
 South Dakota (10/7)\*  
 Minnesota State (10/14)\*  
 Augustana (10/15)\*  
 North Dakota (10/23)\*  
 South Dakota (10/28)\*  
 Neb.-Omaha (11/5)\*  
 North Dakota (11/6)\*

**RESULT**

W 1-0  
 W 4-3  
 W 6-2  
 L 0-2  
 W 3-0  
 W 3-1  
 L 2-5  
 W 3-2  
 W 2-1  
 L 0-4  
 L 1-2  
 L 0-1  
 L 0-3  
 W 3-0  
 L 1-2  
 L 0-5  
 L 0-3  
 L 1-5



# iFan

Proud to Support UMD Athletics

To watch Bulldog events online:  
**ifan.tv**



## Best Selection in the Northland

2500 Wines!! 700 Beers!! 1200 Liquors!!

Everyday at Lake Aire, you can get 10% off any 4 bottles or 15% off any case of wine that is not on sale!!

### Duluth's Largest Discount Liquor Store

Check us out online at:

[www.lakeairebottleshoppe.com](http://www.lakeairebottleshoppe.com)



**LAKE AIRE** BOTTLE SHOPPE

2530 London Road  
Duluth, MN  
**218-724-8818**  
Open  
8:00am-10:00pm  
Monday-Saturday

SCORE SAVINGS WITH



**\$20 OFF**

any 16" Family-size  
Pizza

BULLDOG MEN'S HOCKEY

Offer valid the day of home games only, at participating locations:

Cloquet • 879-3705  
Downtown Duluth • 727-8551  
Duluth Heights • 727-8222  
Hermantown • 729-7227

Lakeside • 525-6604  
Woodland • 724-1277  
West Duluth • 628-2327  
[mysammys.com](http://mysammys.com)



## Chilly Billy's

FROZEN YOGURT

Bring in coupon  
and receive

**50¢ off**

**any frozen yogurt creation!**



UMD Chilly Billy's  
Located in BlueStone Shops  
1010 Woodland Ave  
Duluth, MN 55803  
(218) 481-7521

8oz minimum purchase  
Not valid with other offers

[chillybillysfrozenyogurt.com](http://chillybillysfrozenyogurt.com)



# YEAR-BY-YEAR RESULTS

**2006 Overall 8-8-3 NCC 4-6-2 (fifth)**

**Home 4-2-1 Road 2-5-2 Neutral 2-1-0**

**Head Coach** Greg Cane, 13th season

**Captain** Lisa Ferud

## OPPONENT (DATE)

Southwest Minn. State (8/24)	W 6-0
Washburn (Kan.) (8/26)	L 1-3
Concordia-St. Paul (8/30)	W 6-0
Emporia State (9/2)	W 1-0
Northern State (9/3)	W 1-0
Minnesota State (9/8)*	W 1-0
St. Cloud State (9/10)*	W 2-0
Augustana (9/15)*	W 3-0
Neb.-Omaha (9/17)*	L 0-2
St. Cloud State (9/23)*	T 1-1
South Dakota (9/29)*	L 2-4
Bemidji State (10/2)*	T 1-1
Minnesota State (10/6)*	L 1-2
Augustana (10/8)*	W 2-0
North Dakota (10/15)*	T 1-1
South Dakota (10/20)*	L 1-2
Northern Michigan (10/22)*	L 0-1
Neb.-Omaha (10/27)*	L 0-4
North Dakota (10/29)#	L 0-1

**2007 Overall 7-9-1 NCC 5-6-1 (third)**

**Home 5-3-0 Road 2-5-1 Neutral 0-1-0**

**Head Coach** Greg Cane, 14th season

**Captain** Brianna Francisco

## OPPONENT (DATE)

Mesa State (8/31)	L 0-4
Fort Lewis (9/2)	L 1-3
Bemidji State (9/10)	W 3-0
Neb.-Omaha (9/15)*	L 0-1
North Dakota (9/16)*	W 2-0
South Dakota (9/21)*	L 0-3
Concordia-St. Paul (9/23)	W 1-0
North Dakota (9/30)*	T 0-0
Minnesota State (10/5)*	L 0-1
Augustana (10/7)*	W 2-0
South Dakota (10/12)*	W 1-0
Northern Michigan (10/14)*	L 0-1
St. Cloud State (10/19)*	W 3-0
Augustana (10/26)*	L 2-4
Neb.-Omaha (10/28)	L 0-3
Minnesota State (11/2)*	L 0-2
St. Cloud State (11/4)*	W 1-0

## RESULT

W 6-0
L 1-3
W 6-0
W 1-0
W 1-0
W 1-0
W 2-0
W 3-0
L 0-2
T 1-1
L 2-4
T 1-1
L 1-2
W 2-0
T 1-1
L 1-2
L 0-1
L 0-4
L 0-1

## RESULT

L 0-4
L 1-3
W 3-0
L 0-1
W 2-0
L 0-3
W 1-0
T 0-0
L 0-1
W 2-0
W 1-0
L 0-1
W 3-0
L 2-4
L 0-3
L 0-2
W 1-0

## LEGEND

- \* Northern Sun Intercollegiate Conference Match (North Central Conference from 2004-2007)
- # NSIC Tournament Match
- % NCAA Division-II Tour. Match

**2008 Overall 7-11-2 NSIC 7-4-2 (fifth)**

**Home 4-4-1 Road 3-5-1 Neutral 0-2-0**

**Head Coach** Greg Cane, 15th season

**Captain** Stacy Prodaniuk, Danielle Scheuer, Clare Dahmen

## OPPONENT (DATE)

Wisconsin Parkside (8/28)	L 1-2
St. Cloud State (8/30)	L 1-2
Bemidji State (8/31)	L 1-2
Mesa State (9/4)	L 1-2
Fort Lewis (9/7)	L 0-1
Minnesota State (9/20)*	T 0-0
Southwest Minn. State (9/21)*	W 3-0
Minnesota Crookston (9/26)*	W 4-2
MSU-Moorhead (9/28)*	T 0-0
Upper Iowa (10/4)*	W 1-0
Winona State (10/5)*	L 0-1
St. Cloud State (10/11)*	L 2-3
Concordia-St. Paul (10/12)*	W 2-0
U-Mary (10/18)*	W 2-1
Northern State (10/19)*	L 0-1
Bemidji State (10/24)*	W 1-0
Augustana (11/1)*	L 0-1
Wayne State (11/2)*	W 5-1
U-Mary (11/5)#	L 1-2

## RESULT

L 1-2
L 1-2
L 1-2
L 1-2
L 0-1
T 0-0
W 3-0
W 4-2
T 0-0
W 1-0
L 0-1
L 2-3
W 2-0
W 2-1
L 0-1
W 1-0
L 0-1
W 5-1
L 1-2

**2009 Overall 17-3-2 NSIC 11-1-1 (second)**

**Home 8-0-0 Road 6-3-1 Neutral 3-0-1**

**Head Coach** Greg Cane, 16th season

**Captain** Kelly Duchene, Clare Dahmen

## OPPONENT (DATE)

Minnesota State (8/30)	L 0-2
Northern Michigan (9/7)	W 3-2
St. Cloud State (9/12)	T 0-0
Southwest Minn. State (9/13)*	W 2-0
Minnesota State (9/20)*	W 1-0
MSU-Moorhead (9/25)*	W 1-0
Minnesota Crookston (9/27)*	W 6-1
Winona State (10/2)*	L 0-2
Upper Iowa (10/4)*	W 1-0
Concordia-St. Paul (10/10)*	W 1-0
St. Cloud State (10/11)*	W 1-0
Northern State (10/17)*	W 2-1
Mary (10/18)*	W 2-0
Bemidji State (10/23)*	T 1-1
Wayne State (10/30)*	W 5-1
Augustana (11/1)*	W 1-0
Northern State (11/4)	W 1-0
St. Cloud State (11/6)*	W 2-1
Winona State (11/8)*	W 2-1
Minnesota State (11/13)*	W 2-0
Metro State (11/15) %	L 1-2

## RESULT

L 0-2
W 3-2
T 0-0
W 2-0
W 1-0
W 1-0
W 6-1
L 0-2
W 1-0
W 1-0
W 1-0
W 1-0
W 2-1
W 2-0
T 1-1
W 5-1
W 1-0
W 1-0
W 2-1
W 2-1
W 2-0
W 2-0
L 1-2



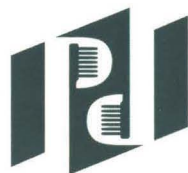
**Bernick's**

proudly  
supports  
**UMD  
Hockey**



Your locally owned and  
operated full service  
beverage, vending and  
food distributor  
since 1916.

[www.bernicks.com](http://www.bernicks.com)  
1-800-627-0287



**PIEDMONT  
DENTAL**

TRUSTED FAMILY PROFESSIONALS

All Dental Services in One Building

GENERAL FAMILY DENTISTRY  
& ORTHODONTICS

"Our patients trust us for a reason"

Clyde H. Finch, DDS

David M. Haugen, DDS

Brian J. Mart, DDS

Jonathan P. Nash, DDS

Heidi L. Spoelhof, DDS

Tanner L. Diggs, DDS

2860 Piedmont Avenue  
Duluth, Minnesota 55811-2993  
218-722-0823

[www.piedmontheightsdental.com](http://www.piedmontheightsdental.com)





# YEAR-BY-YEAR RESULTS

**2010 Overall** 12-6-2 **NSIC** 10-3-0 (second)

**Home** 7-1-0 **Road** 4-5-2 **Neutral** 1-0-0

**Head Coach** Greg Cane, 17th season

**Captain** Maria Leider

**OPPONENT (DATE)**

Colorado Mines (9/2)  
 Regis University (9/4)  
 Northern Michigan (9/10)  
 Michigan Tech (9/12)  
 Minnesota Crookston (9/18)\*  
 MSU-Moorhead (9/19)\*  
 Upper Iowa (9/25)\*  
 Winona State (9/26)\*  
 St. Cloud State (10/2)\*  
 Concordia-St. Paul (10/3)\*  
 Mary (10/9)\*  
 Northern State (10/10)\*  
 Augustana (10/16)\*  
 Wayne State (10/17)\*  
 Bemidji State (10/22)\*  
 Minnesota State (10/30)\*  
 Southwest Minn. State (10/31)\*  
 Mary (11/3)#  
 Bemidji State (11/5) #  
 Winona State (11/7) #

**2011 Overall** 11-6-1 **NSIC** 10-3-0 (third)

**Home** 7-2-1 **Road** 4-4-0

**Head Coach** Greg Cane, 18th season

**Captain** Reegan Lloyd

**OPPONENT (DATE)**

Northern Michigan (9/1)  
 Regis (9/3)  
 Colorado Mines (9/11)  
 MSU-Moorhead (9/17)  
 Minnesota Crookston (9/18)\*  
 Winona State (9/24)\*  
 Upper Iowa (9/25)\*  
 Concordia-St. Paul (10/1)\*  
 St. Cloud State (10/2)\*  
 Northern State (10/8)\*  
 Mary (10/9)\*  
 Wayne State (10/15)\*  
 Augustana (10/16)\*  
 Bemidji State (10/21)\*  
 Southwest Minn. State (10/29)\*  
 Minnesota State (10/30)\*  
 Augustana (11/2) #  
 Minnesota State (11/4) #

## LEGEND

- \* Northern Sun Intercollegiate Conference Match
- (North Central Conference from 2004-2007)
- # NSIC Tournament Match
- % NCAA Division-II Tour. Match

**2012 Overall** 8-7-3 **NSIC** 7-5-3 (eighth)

**Home** 4-3-1 **Road** 4-3-2 **Neutral** 0-1-0

**Head Coach** Greg Cane, 19th season

**Captain** Kristi Mehrman

**OPPONENT (DATE)**

Northern Michigan (8/30)  
 Grand Valley State (9/7)  
 St. Cloud State (9/9)\*  
 Winona State (9/15)\*  
 Upper Iowa (9/16)\*  
 Southwest Minn. State (9/22)\*  
 Sioux Falls (9/23)\*  
 Augustana (9/29)\*  
 Wayne State (9/30)\*  
 Mary (10/6)\*  
 Minot State (10/7)\*  
 Minnesota State (10/12)\*  
 Concordia-St. Paul (10/14)\*  
 Northern State (10/20)\*  
 MSU-Moorhead (10/21)\*  
 Minnesota Crookston (10/26)\*  
 Bemidji State(10/28)\*  
 Minnesota State (10/30) #

**2013 Overall** 17-5-1 **NSIC** 12-3-0 (third)

**Home** 11-1-0 **Road** 5-4-1 **Neutral** 1-0-0

**Head Coach** Greg Cane, 20th season

**Captain** Dani Potter

**OPPONENT (DATE)**

Northern Michigan (9/5)  
 North Dakota State (9/8)  
 St. Cloud State\* (9/15)  
 Upper Iowa\* (9/21)  
 Winona State\* (9/22)  
 Sioux Falls\* (9/28)  
 No. 18 Southwest Minnesota\* (9/29)  
 Wayne State\* (10/5)  
 Augustana\* (10/6)  
 Minot State\* (10/12)  
 U-Mary\* (10/13)  
 Concordia-St. Paul\* (10/18)  
 No. 3 Minnesota State\* (10/20)  
 MSU-Moorhead\* (10/26)  
 Northern State\* (10/27)  
 Bemidji State\* (11/1)  
 Minnesota Crookston\* (11/3)  
 Bemidji State# (11/6)  
 No. 19 Winona State# (11/8)  
 No. 6 Minnesota State# (11/10)  
 No. 22 Winona State% (11/17)  
 Southwest Minnesota% (11/22)  
 No. 1 Grand Valley State% (11/24)

**RESULT**

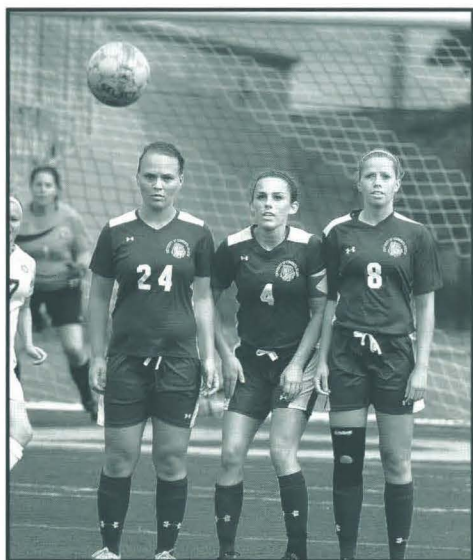
W 4-0  
 L 0-5  
 L 1-2  
 L 0-2  
 L 0-2  
 W 1-0  
 W 6-0  
 T 1-1  
 T 2-2  
 W 2-0  
 L 0-1  
 W 5-0  
 W 4-2  
 W 4-2  
 W 3-1  
 W 4-0  
 T 1-1  
 L 0-4

**RESULT**

W 2-1  
 L 1-3  
 W 4-1  
 W 2-0  
 W 2-1  
 W 2-1  
 L 0-3  
 W 5-0  
 W 3-2 (OT)  
 W 2-1  
 W 4-0  
 W 2-1 (2OT)  
 L 0-1  
 W 3-0  
 W 2-1  
 L 0-1  
 W 3-1  
 W 2-0  
 W 3-1  
 T 2-2 (OT)  
 W 1-0  
 W 2-0  
 L 1-2



# YEAR-BY-YEAR RESULTS



## AGAINST THE COMPETITION

### NSIC OPPONENTS

Augustana (S.D.)	11-4-1	2014
Bemidji State	16-4-2	2014
Concordia-St. Paul	16-0-0	2014
U-Mary	8-3-1	2014
Minnesota-Crookston	12-0-1	2014
Minnesota State Mankato	8-16-4	2014
Minnesota State-Moorhead	16-3-1	2014
Minot State	1-2-0	2014
Northern State	13-1-1	2014
Sioux Falls	3-0-0	2014
St. Cloud State	16-7-4	2014
Southwest Minnesota State	22-2-0	2014
Upper Iowa	5-2-0	2014
Wayne State (Neb.)	12-0-2	2014
Winona State	11-14-3	2014

### NON-CONFERENCE FOES

Augsburg	0-1-0	1996
Carleton	1-0-0	1997
Central Missouri	0-1-0	2014
Christian Brothers (Tenn.)	0-1-0	2002
Colorado Mines	0-1-1	2011
Concordia-Moorhead	1-0-0	1994
Emporia State	0-1-0	2006
Fort Lewis	0-2-0	2008
Grand Valley State	0-2-0	2013
Harding (Ark.)	1-0-0	2002
Hillsdale	1-0-0	2001
Indianapolis	2-0-0	2000
Iowa State	0-1-0	1996
Kansas	1-0-0	1995
Lakehead (Ont.)	1-0-0	1994
Macalester	0-2-0	1997

**2014 Overall** 17-5-1 **NSIC** 12-3-0 (third)

**Home** 11-1-0 **Road** 5-4-1 **Neutral** 1-0-0

**Head Coach** Greg Cane, 21st season

**Captain** Hannah Keil, Jennifer Smith

### OPPONENT (DATE)

Southwest Baptist (9/5)	L 0-1
Central Missouri (9/7)	L 0-2
Northern Michigan (9/12)	L 1-2
St. Cloud State* (9/14)	W 3-0
MSU-Moorhead* (9/20)	W 4-0
Northern State* (9/21)	W 1-0
Upper Iowa* (9/27)	L 0-3
Winona State [RV]* (9/28)	L 0-1
Sioux Falls* (10/4)	W 1-0
Southwest Minnesota* (10/5)	L 1-2 (OT)
Wayne State (Neb.)* (10/11)	W 4-2
Augustana (S.D.)* (10/12)	L 1-3
Minot State* (10/17)	L 1-3
U-Mary* (10/19)	W 3-0
No. 1 Minnesota State* (10/23)	L 0-2
Concordia-St. Paul* (10/26)	W 2-1
Bemidji State* (10/31)	W 2-0
Minnesota Crookston* (11/2)	T 0-0 (20T)
No. 24 Augustana (S.D.)# (11/5)	W 1-0
Winona State# (11/7)	L 0-2

Mesa State	0-2-0	2008
Michigan Tech	0-1-0	2010
Minnesota	0-4-0	1998
Minnesota-Morris	7-0-0	2002
Missouri-St. Louis	0-2-0	1999
Nebraska Omaha	1-7-0	2007
North Dakota	2-6-3	2007
North Dakota State	4-3-2	2013
Northern Colorado	0-1-0	2001
Northern Kentucky	0-1-0	2000
Northern Michigan	12-4-3	2014
Northland	1-0-0	1997
Northwest Missouri State	2-0-0	2003
Oklahoma	1-0-0	1996
Regis (Colo.)	0-2-0	2011
Rockhurst	0-1-0	2004
St. Benedict	1-1-0	1996
St. Joseph's (Ind.)	2-1-0	2000
Saint Mary's (Minn.)	0-1-0	1995
St. Scholastica	8-2-0	2005
St. Thomas (Minn.)	0-3-1	1997
South Dakota	2-5-0	2007
South Dakota State	1-0-1	2003
Southern Illinois-Edwardsville	0-1-0	1998
Southwest Baptist (Mo.)	0-1-0	2014
Truman State	2-2-1	2005
Washburn (Kan.)	0-1-0	2006
Wisconsin-Eau Claire	1-1-0	1997
Wisconsin-Parkside	0-2-0	2008
Wisconsin-River Falls	2-0-1	1997
Wisconsin-Stout	1-0-0	1994
Wisconsin-Superior	1-0-0	1994

# GET YOUR GAME FACE ON!

**GET THE PAINT. GET PUMPED.  
GET A DESIGNATED DRIVER.  
THAT'S PREPARATION!!**

**84% OF COLLEGE STUDENTS WHO DRINK USE A DESIGNATED DRIVER\***



According to the U.S. Census Bureau, the majority of college students are of legal drinking age. However, those under 21 should not drink at all.

\*Source: American College Health Association --  
National College Health Assessment II, Fall 2013



© 2014 Anheuser-Busch, St. Louis, MO



**Proud Supporter of UMD Athletics**



# OFFICIAL VEHICLE OF UMD ATHLETICS



## SEE YOUR DULUTH-AREA TOYOTA DEALER TODAY

**Kolar Toyota**  
Duluth, MN  
[KolarToyota.com](http://KolarToyota.com)

**Kari Toyota**  
Superior, WI  
[KariToyota.com](http://KariToyota.com)

**Iron Trail Toyota**  
Virginia, MN  
[IronTrailToyota.com](http://IronTrailToyota.com)

**Ashland Toyota**  
Ashland, WI  
[Ashland-Toyota.com](http://Ashland-Toyota.com)

[BUYATOYOTA.COM](http://BUYATOYOTA.COM)