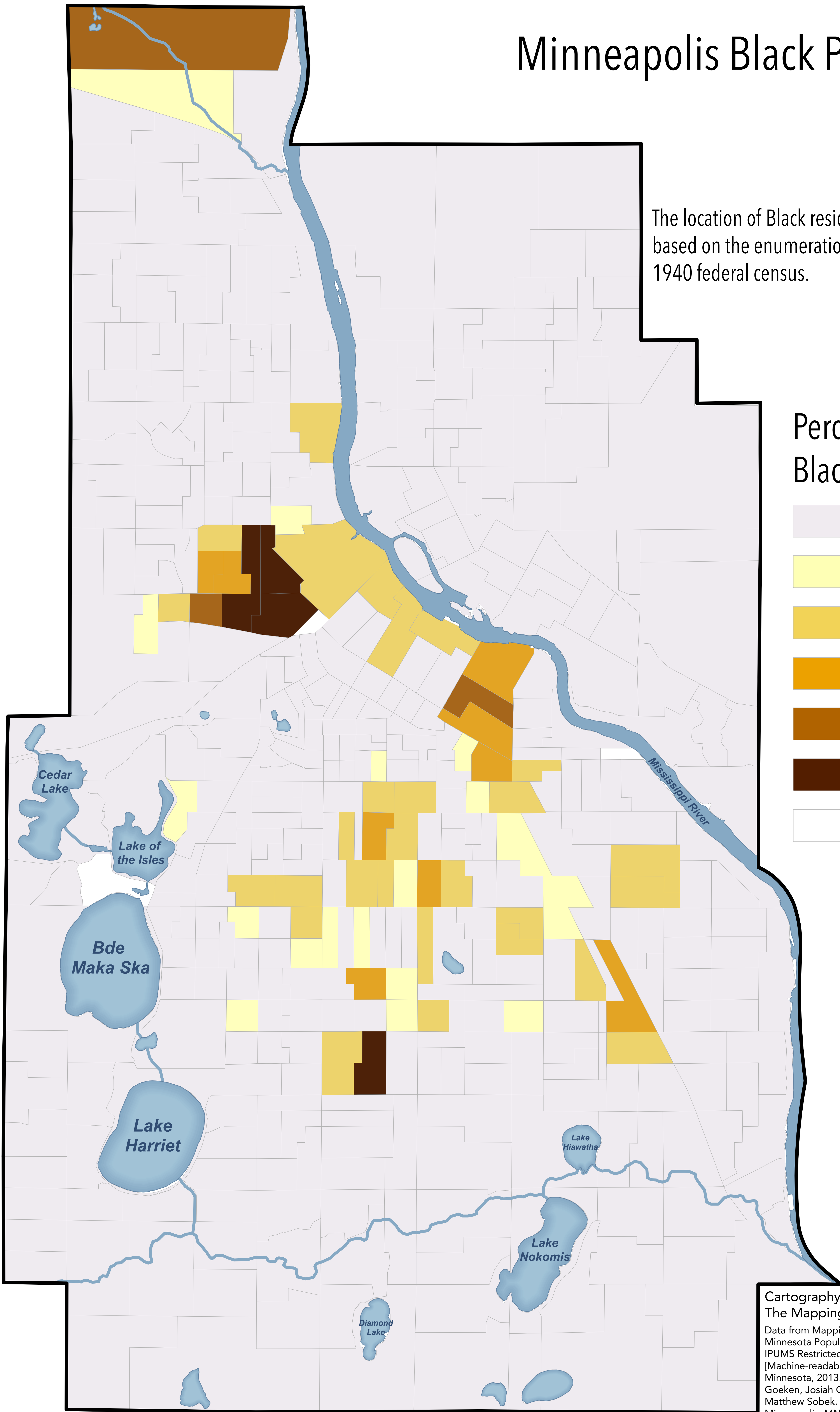
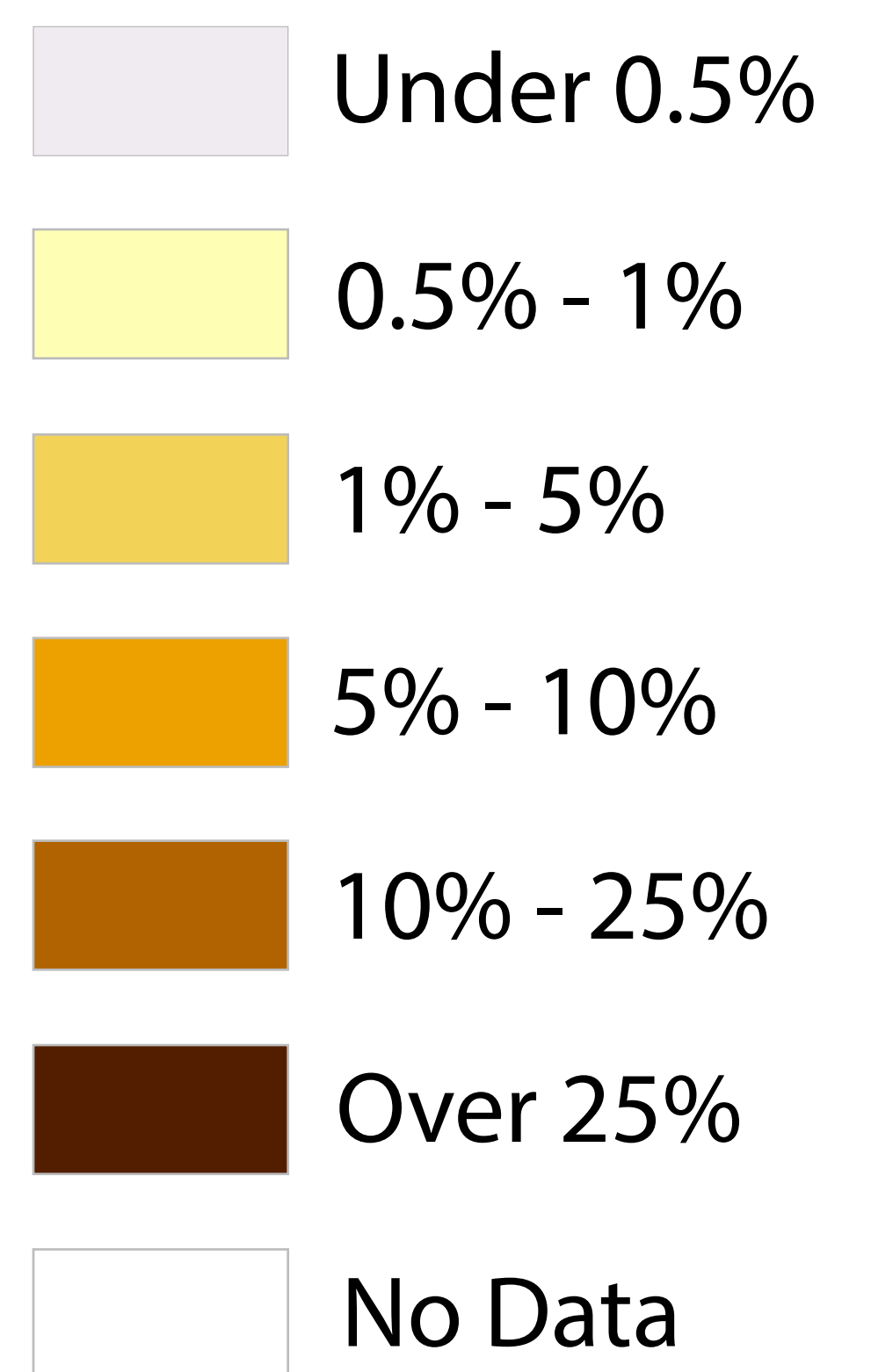


Minneapolis Black Population 1940

The location of Black residents in Minneapolis based on the enumeration districts used in the 1940 federal census.

Percent Black



Cartography & design by Marguerite Mills
The Mapping Prejudice Project, 2020
Data from Mapping Prejudice & Hennepin County
Minnesota Population Center and Ancestry.com.
IPUMS Restricted Complete Count Data: Version 1.0
[Machine-readable database]. Minneapolis: University of
Minnesota, 2013. Steven Ruggles, Sarah Flood, Ronald
Goeken, Josiah Grover, Erin Meyer, Jose Pacas and
Matthew Sobek. IPUMS USA: Version 10.0 [dataset].
Minneapolis, MN: IPUMS, 2020.
<https://doi.org/10.18128/D010.V10.0>