

ARCHIVES
PRINT
13/30/07
1978



*\$351.⁶³
for 250 copies*

A look at Women's Sports

**University of Minnesota,
Duluth**

*The
University
of Minnesota,
Duluth*

Established in 1851 by an act of Minnesota territorial legislature, the University of Minnesota is an autonomous body governed by the Board of Regents which enacts laws governing the institution, controls expenditures, and acts upon all staff changes.

The University of Minnesota, Duluth (UMD), became a coordinate campus of the University of Minnesota by legislative act on July 1, 1947. Responsibility for its administration rests in the hands of a provost, who reports directly to the President of the University.

As a campus of the University, UMD is fully accredited by North Central Association of Colleges and Secondary Schools. It is accredited separately by the National Council for Accreditation of Schools of Music, American Association of University Women, Council on Social Work Education, Liaison Committee of the American Medical Association, and Council on Dental Education of the American Dental Association.

The University of Minnesota, Duluth, offers study opportunities in the following academic programs:

Preprofessional programs of 1 or more years' duration in most of the professions.

Two-year associate degree programs in liberal arts, dental hygiene, secretarial, sciences and vocational teacher education.

A 2-year basic sciences medical school program leading toward the M.D. degree through transfer to the University of Minnesota Medical School or other medical schools.

Four-year baccalaureate degree programs in accounting and business administration, fine arts, liberal arts and sciences, applied arts and sciences, social work, and preparation for elementary and secondary school teaching.

Master's degree programs in art, biology, botany, business administration, chemistry, communicative disorders, counseling, education, educational administration, English, geology, history, physics, social work and zoology.

A Six Year Program and a 2-year Specialist Certificate Program in elementary, secondary and general school administration.

About our Provost

UMD Provost Robert L. Heller is a long-time supporter of women's and men's athletics.

Provost Heller has closely followed UMD's participation in the Minnesota Intercollegiate Athletic Conference, the Western Collegiate Hockey Association and the Northern Intercollegiate Conference.

Dr. Heller came to UMD in 1950 to establish the geology department, which he headed in 1954. He was named assistant to the provost in 1965, assistant provost in 1969, associate provost in 1972, acting provost in 1976 and provost in January, 1977.

Provost Heller was a leader in the establishment at UMD of the School of Medicine, School of Social Development, Dental Hygiene Program, Lake Superior Basin Studies Center and Minnesota Marine Advisory Service.

Scholarships

Presently the University of Minnesota-Duluth offers financial aid based only on need which is available to all students. An athletic scholarship program is being considered for the near future. Contact Linda M. Larson, Coordinator of Women's Athletics, for further information.

***Table of
Contents***

COACHES FOR WOMEN'S SPORTS6
ATHLETIC DIRECTOR7
TENNIS8
FIELD HOCKEY9-10
VOLLEYBALL11
BASKETBALL.....14
SOFTBALL15
CROSS-COUNTRY AND TRACK16
SWIMMING17-18
ATHLETIC TRAINER19
SKIING20
WOMEN'S SPORTS INFORMATION
DIRECTOR.....21

Publication Acknowledgements

Jane Watt, S.I.D.

Lynn Schwartz, photography

*Women's
Coaches*

CROSS-COUNTRY ELEANOR RYNDA
VOLLEYBALL LINDA LARSON
FIELD-HOCKEY LYNN SCHWARTZ
TENNIS MARY MULLEN
BASKETBALL LINDA LARSON
TRACK AND FIELD ELEANOR RYNDA
SWIMMING MARY MULLEN
SOFTBALL LINDA LARSON
SKIING DAVE KERN

Women's Athletic Director

Linda Larson brought an educational background to her coaching of women's sports at the University of Minnesota-Duluth. Her own competitive experiences in sports included intramural sports in high school where she participated in basketball, bowling and volleyball. In college she played four years each of basketball, volleyball and softball.

Larson was a 1971 graduate from North-eastern Illinois University in Chicago, Ill. There she received her B.A. degree and went on to attend Ball State University, Muncie, Indiana, and graduated with her M.A. degree.

Teaching experience for Linda Larson first started at Culver Military Academy in Culver, Indiana as a physical education instructor and Girls Athletic Director. She also coached basketball 3 years, volleyball 2 years, softball 2 years, and track and field 1 year.

Larson was born in San Francisco, Calif. and was raised in Chicago, Illinois where she attended elementary and high school in the Chicago public schools. She started working at the University of Minnesota-Duluth in November 1975. She taught general physical education classes and was named as Coordinator of Women's Athletics.

Now the women's volleyball, basketball and softball coach, Linda has given a sturdy learning experience to her teams, and presides as the Women's Athletic Director.

Even with her busy schedule, Linda still finds time to personally talk to all her players. Once in a while you can also find her playing basketball in the gym with some of the students of the school.



Tennis

Tennis has been around the University of Minnesota-Duluth since 1967, and is run in a semi-competitive manner. This year tennis involves fall and spring sessions.

"The growth of the program is magnificent as demonstrated by the number of contests and their intensity," said head coach Mary Mullen.

There will be 16 to 18 contests played between the two seasons during 1976-77. The increase in student participation has improved greatly.

Opportunities at the State and Regional level of play are based on contenders' ability to qualify through regular play.

Outstanding players 1976-77: Lisa Shefchik, Pat Berg, Carmen Gilbertson and Gina King.



Field Hockey Coach

Lynn R. Schwartz, the University of Minnesota-Duluth Field Hockey coach brought her knowledge of Field Hockey from New York.

In 1969, Lynn received her AA with a Physical Education major from Nassau Community College. In 1971 she attended New York University and received her BS degree with a Physical Education major. In 1973 Lynn attended Adelphi University where she received her MA with a Physical Education major, and in 1977 she will receive her MA with a Health Education major.

Lynn is now filling a sabbatical leave position at the University of Minnesota-Duluth, teaching Physical Education and Health, and coaching the women's Field Hockey team.

In 1974-76 she worked with Marvin H. Sugarman Productions, New York City, a TV sports production company, and her varied responsibilities included research and public relations.

In 1972-74 she was a substitute teacher in Suffolk County, New York, mainly on the secondary level in Health and Physical Education.

In 1971-72 in Lake Grove, New York she was a K-6 Physical Education teacher.



"The Women's Field Hockey team is run with system defense of the modern Field Hockey, as is being played in international competition."

Outstanding Field Hockey players this year included:

Carol Sandbakken - a senior. "Carol moved to link a new position and as the main states linking the offense and defense together," said Schwartz.

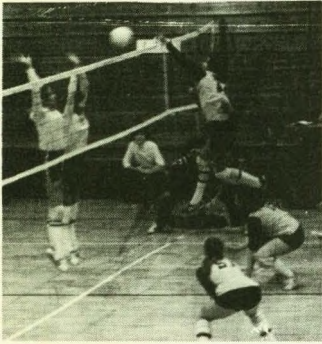
Cindy Bijold - a sophomore. "Prior to the first game not more than two weeks before, Cindy had never played Field Hockey. She went ahead and became one of the most outstanding goalies in the state," said Schwartz.

The record for the team this year was a disappointing 0-8. But Schwartz feels this is due to the inexperienced team.

Field Hockey hasn't been at UMD for many years.

Field Hockey





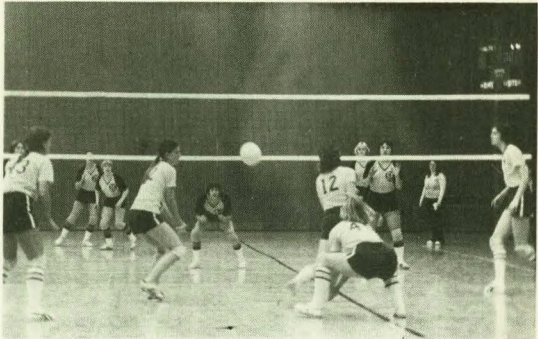
Volleyball

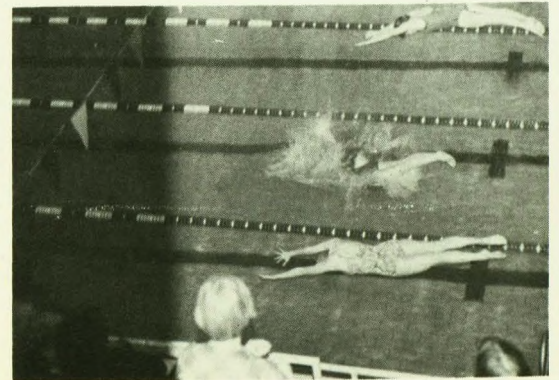
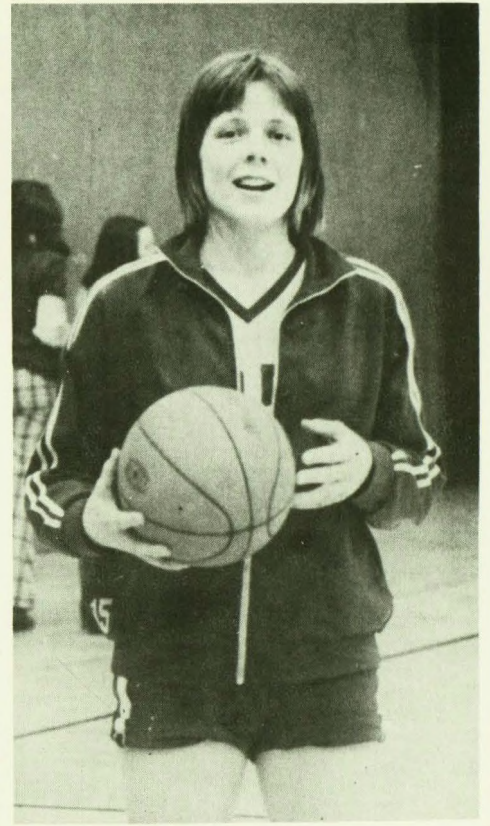
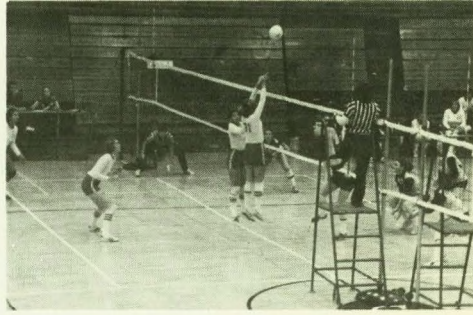
Volleyball has been an active and growing sport at the University of Minnesota-Duluth. The squad finished seventh in the State in 1975, and then advanced to fourth in 1976, with an impressive season record; 23-10.

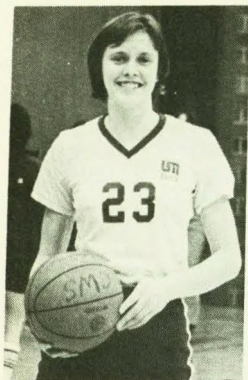
"Our success is due to team-work. We always try to build on each player's abilities and run our offense and defense to suit our personnel," said coach Larson.

Competition revolves around Minnesota, Wisconsin, Michigan, North Dakota and Canadian colleges. Games are usually arranged in triangulars, quadangulars or tournament play.

Top spikers for the Bulldogs include Connie Ulander from Maple Plain, Minn. and Barb Peterson from Buffalo, Minn. They possess the ability to place the ball through the defensive holes and also hit the quick middle attack. Micky Tierney has been the setter and floor leader calling the offensive strategy. The team can also count on strong serving from Ann Olson, Long Beach, Calif.







Basketball

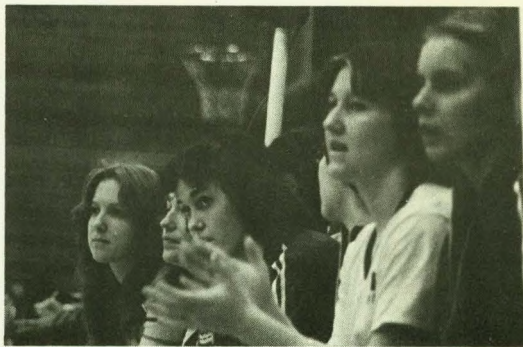


Though the team has been hampered by injuries over the past few seasons, they have still been able to remain competitive with the Minnesota, Michigan, Wisconsin, North Dakota and Canadian colleges. Each year the freshmen have added strength to the team and several have earned positions on the varsity squad.

"The team philosophy stresses constant pressure defense and the players have developed a personal pride in their defense which also sparks our offense," said Larson.

The starting guards and play-makers have been Terri Nord from Crosby, Minn. and Nancy Carr from Mauston, Wis., Julie Solien from Aitkin, Minn., Connie Ulander from Maple Plain, Minn., and Barb Peterson from Buffalo, Minn. are responsible for controlling the boards and working inside to run the offense.

The Bulldogs have earned placement in the State Tournament, but have not been able to advance to the finals.



Softball

The softball program was recognized in 1977 with competition between Minnesota, Wisconsin and North Dakota colleges. The team participates in a number of tournaments prior to the State Tournament.

With the possibility of the weather hampering the season, most of the games are away.

"As with the other sports in our program, the freshmen are a great asset to the growth and development of our softball team. The summer softball program in Duluth has also helped us field our team and has given our players additional experience," said Larson.



Elenor Rynda has been coaching women's and men's track and cross-country for over 10 years at the University of Minnesota, Duluth.

Miss Rynda runs her program, working both men and women together. They support each other and help each other.

Track



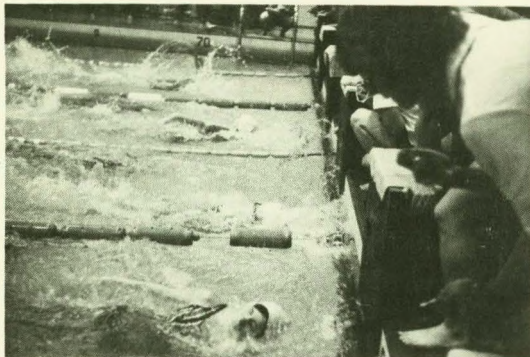


Swimming Coach

The University of Minnesota-Duluth, swim coach Mary M. Mullen has been an Assistant Professor on staff since 1967.

Mary received her B.A. degree from the University of Northern Iowa in 1956, and went on and received her M.A. at the University of Iowa in 1970.

She administered the UMD Women's Athletic Program for 5 years; 1970-1975. Her coaching experience at UMD includes 10 years of swimming, 9 years of tennis, 3 years of basketball and 1 year of volleyball.



Swimming

"UMD has had a swimming team for ten years. We have always been competitive within the state although we have not won state titles. The quality of the swimmers and the quality of the program have consistently increased over the past ten years. Seasonal opportunities in meets have increased as the program has grown. In 1967, we swam four meets. We now swim 14 plus we have extended past seasonal opportunities at the regional and national level."

The 1975-76 record left the Bulldog swimmers with a sixth place in state. The current record stands as 3-0 in dual meets, and 3-1 in total meets.

The outstanding swimmers this year are:

Pat Wolff from Crystal, Minn., a senior and 4 year veteran. She has an excellent background with 12 years of swimming experience.

Mullen stated, "Pat has been the backbone of UMD's team for the past four years."

Jill Nelson—a freshman and new talent from Biwabik, Minn.

Jill is a quality swimmer in short distances, free-style and back-stroke.

Lynn Henzman—Lynn swims the 100 back-stroke.

Athletic Training Program

A very new program of only 7 years. Directed and organized by present head trainer Don Roach. Student trainers who cover many of the sports at UMD are selected by interest and dedication to becoming an athletic trainer.

Don Roach: Certified Athletic Trainer

B.S. degree from San Jose State University in 1966. M.S. degree from Indiana University in 1970.

Student Assistants:

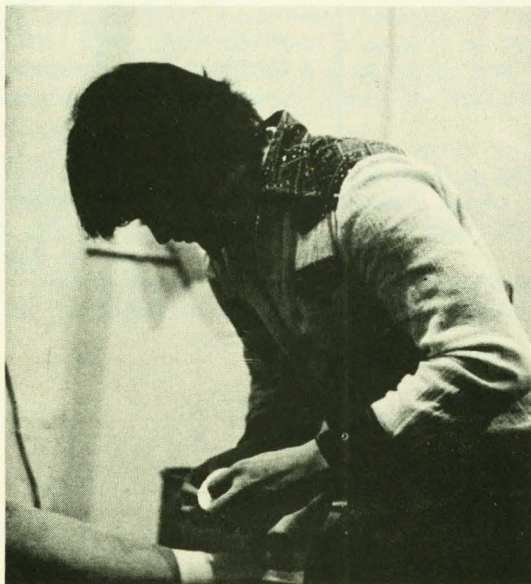
Marc Anderson - Assistant Trainer

Amy Lee - Student Trainer

Jeff Segal - Student Trainer

Carl Huntley - Student Trainer

Training program does an excellent job of covering all sports at UMD and hopefully will continue to get qualified, dedicated and hard-working student trainers.



The Ski Team

They earned their way to Nationals!

Dave Kern, head coach of men's and women's ski team is in good spirits about his program and the outcome of the season.

Basically practices are designed twice a week for the skiers at Mont du Lac Ski Resort. They consist of both men and women working together, setting up courses and running through them and being timed. The team also works hard on their own outside of practice.

The ski team has their most difficult competition with Northern Michigan, and Michigan Tech. Even so, Coach Dave Kern and presently the best skiers on the UMD team; for women, Geri Benson and Mary Sorum, men, Dave Salo, Scott Ransom, Brian Seemann and Scott Neustal will head out for Stowe, Vermont for the National Ski Championship. They earned their way to Nationals!

Sports Information Director



Being only a freshman at the University of Minnesota-Duluth, I have found the job of the Women's Sports Information Director a great opportunity and fantastic learning experience. I plan to major in journalism, and I feel that this type of job will be a great help to me as experience in my field of work.

I am a member of the women's volleyball, basketball and softball teams here at UMD. Participating in these sports has helped me greatly in my publications of the women's sports.

I attended Duluth Central High School where I participated on the girl's volleyball, basketball and softball teams. I also was a member of the school newspaper staff and a student of the journalism classes. I was a cheerleader and I was active in the Duluth Inter-City Student Council.

I feel that the whole athletic staff and administration at UMD is a great asset to the growth of women's sports. Women's sports is at a stage now where it can only go one way, up!

I wish to thank Linda Larson and the athletic staff for giving me the opportunity at this job.

I hope you've enjoyed this brief look at the University of Minnesota-Duluth and that some of your questions have been answered.

We are proud of our program and the goals and values we are always striving to achieve.

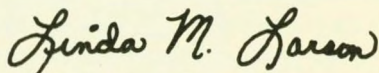
For further information please contact:

Linda M. Larson, Coordinator of Women's Athletics, 124 P.E.

Marjorie L. Austin, Director of Admissions, 123 Adm.

Nicholas F. Whelihan, Director of Financial Aids, 139 Adm.

I look forward to hearing from you.



Linda M. Larson
Coordinator of Women's Athletics

University of Minnesota-Duluth; 2400 Oakland Ave., Duluth, Mn. 55812.

